



HAL
open science

Tensile and shear strengths of concrete and rock

Minh-Phong Luong

► **To cite this version:**

Minh-Phong Luong. Tensile and shear strengths of concrete and rock. *Engineering Fracture Mechanics*, 1990, 35 (1-3), pp.127-135. 10.1016/0013-7944(90)90190-R . hal-04667427

HAL Id: hal-04667427

<https://hal.science/hal-04667427v1>

Submitted on 3 Sep 2024

HAL is a multi-disciplinary open access archive for the deposit and dissemination of scientific research documents, whether they are published or not. The documents may come from teaching and research institutions in France or abroad, or from public or private research centers.

L'archive ouverte pluridisciplinaire **HAL**, est destinée au dépôt et à la diffusion de documents scientifiques de niveau recherche, publiés ou non, émanant des établissements d'enseignement et de recherche français ou étrangers, des laboratoires publics ou privés.



Distributed under a Creative Commons Attribution - NonCommercial 4.0 International License

Tensile and shear strengths of concrete and rock

MINH PHONG LUONG

C.N.R.S.–L.M.S., Ecole Polytechnique, 91128 Palaiseau, France

Abstract—Strength properties of concrete and rock materials may be assessed from process of deformation and the principal modes of fracture mechanics. This paper presents the experimental results obtained from two novel techniques of measuring mode I and mode II of concrete and rock strength: (1) Homogeneous Direct Tensile Test and (2) Direct Shear Test. The proposed testing arrangements are very simple, practical and reliable as well as rigorous from a mechanics viewpoint. They can both be used as routine tests. It provides simple means for evaluating strength properties of concrete, rock, ceramics, etc. under various conditions of loading (temperature, high confining pressure, immersed conditions) and even in hostile environments.

1. INTRODUCTION

INTEREST IN the strength and deformation characteristics of concrete and rock materials has increased very much in recent years because they are directly applicable to the design of large concrete structures, particularly for those which must withstand severe loadings generated by traffic, wind, thermal shocks, wave and earthquakes, and also to studies of rock mining, tunnelling, drilling, cutting, crushing, and blasting, and sometimes indirectly applicable to consideration of the behaviour of large jointed rock masses. This is also due to the need for an understanding of concrete and rock response as a structural material to various types of loading and because nonlinear fracture mechanics has entered the field as an aid to understanding concrete and rock damage and failure. In addition, techniques for numerical analysis, such as finite element methods have been developed which require comprehensive material models.

Many types of tests have been devised, using equipment and techniques that range from the crude and empirical, with results that are almost impossible to interpret analytically, to the theoretically elegant, which are almost impossible to execute practically.

The greatest difficulty in the direct test for the determination of tensile strength and shear strength of concrete and rock materials in the gripping of specimens. To achieve uniform tensile stress distribution or well defined shear stress, and for easy gripping, especially prepared specimens are required which are difficult to make. As a result, a great number of indirect methods have been developed for determining tensile and shear strengths of concrete and rock materials[1, 2, 3].

2. UNIAXIAL TENSILE STRENGTH

Tensile strength of concrete and rock materials in one of their most fundamental and important properties, particularly because concrete and rocks are brittle and very much weaker in tension than in compression.

The interest of tensile strength of concrete has increased very much in recent years for many reasons: (1) its role in binding and punching shear has been recognized, (2) it is one of the relevant parameters in the mechanical behaviour of reinforced concrete, (3) it is required for the design of pavements, for the analysis of concrete dams to prevent thermal cracking and sometimes for the design of prestressed beams, (4) it is also of interest in determining the initiation of cracking in plain and reinforced concrete members, (5) techniques for numerical analysis need comprehensive material models, and (6) structures are being built in harsh environments where temperature variations play a major role with regard to durability and where cracking of concrete must be controlled.

In spite of this need for an accurate knowledge of tensile strength, a complete satisfactory tensile test for concrete has not so far been developed. The determination of concrete tensile strength started at the early stages in the development of concrete technology with the direct tension

test and the flexural test. Several methods, more or less sophisticated, were later developed of which the splitting test has received special attention and has been standardized in many countries. Unhappily the tensile strength of concrete is found to be highly sensitive to the testing techniques and to the size and shape of the specimens used. This fact has prevented a deep understanding of the behaviour of concrete under tension and, therefore, has made the practical application of the tensile strength values obtained from tests highly unreliable.

In rock mechanics the tensile strength is fundamentally important in that it determines the response of the material to dynamic forces, in drilling, blasting and breaking ground by means of wedge penetration devices, ploughs and rock rippers.

The concept of tensile strength, in relation to the ability of a rock to resist dynamic attack or to support static loads, is little used as a design factor. It remains one of the least well defined because of the lack of an experimental technique that is both practical and reliable as well as rigorous from a mechanics point of view. Most rocks are more or less brittle; when unconfined, the test samples cannot yield plastically to relieve the stress concentrations that are produced at localized points around the specimens, where these are gripped to be pulled apart by the testing machine. Consequently premature failure is generated from these points. Difficulties in ensuring truly axial loading also exist, so that the specimen is liable to be twisted or bent when gripped and pulled from either end.

Various direct and indirect testing methods have been developed, in attempts to resolve these difficulties and to determine the tensile strength of concrete and rocks. These can, in general, be grouped as follows:

- Bending tests: bending of prismatic and cylindrical specimens and bending of discs.
- Hydraulic expansion tests.
- Diametral compression of disc: Brazilian test and ring test.
- Miscellaneous methods: diametral compression of cylinders, diametral compression of spheres, compression of square plates along a diameter and centrifugal tension.

The split cylinder Brazilian indirect tension test[4] has often been adopted and provides a simple means for obtaining the tensile strength of rocks as well as concrete. The popularity of this test stems from the fact that it is not only easy to perform, but it often uses the same cylindrical specimens and testing equipment that are used to determine unconfined compressive strength. Despite its popularity, however, it does not provide a precise measurement of the tensile strength. Past studies[3, 5] have shown that the tensile strength as determined by the split-cylinder tests may overestimate the true tensile strength of brittle materials by as much as 50%.

3. PROPOSED DIRECT TENSILE TEST

Direct tension applied to a specimen is theoretically the simplest method of determining the tensile strength. It is both practical and theoretically meaningful. The direct test is of more fundamental value because the stress field of an isotropic specimen is determined directly by the applied loading and the boundary conditions, irrespective of the material properties. Indirect tests have the inherent disadvantage that a stress-strain relationship must be assumed in order to obtain usable results; the usual assumption of linear elasticity, with equal moduli in compression and tension, is invalid for many rocks. However, there are major difficulties in gripping the specimens and applying a load parallel to the axis of the specimen.

The new proposed test specimen is a cylindrical tube illustrated in Fig. 1. The test sample is easily prepared, with two parallel flat ends and two inversed tubular coaxial borings; the external surface requires no particular preparation. The proposed configuration converts the applied load on the specimen into a tension, so that the usual compressive test machine can be used. The cylindrical symmetry permits self alignment of loads parallel to the axis of the specimen. The test requires no special device for specimen gripping and compressive loads, for example, can be applied without any precaution. There will be no tendency to cause bending so that abnormal stress concentrations are avoided.

In particular, this test can be conducted in hostile environmental conditions: high temperature testing, long duration testing (creep or relaxation), immersed conditions, high confining pressure,

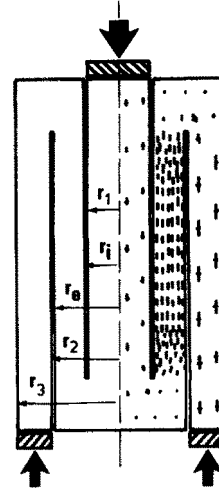
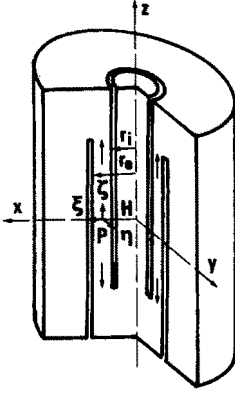


Fig. 1. Geometry of the proposed tensile test specimen.

Fig. 2. Finite element calculation of the test specimen for a linear elastic material.

under irradiation, or shock loading, and so on. The same specimen can also be used for uniaxial compression or torsion testing.

In the case of an elastic homogeneous isotropic material in its natural initial state, the de Saint–Venant principle ensures that, as a distance $d = \pi\sqrt{De}$ from the ends of the tube (D denotes the diameter of the tube and e its thickness), the strain distribution is practically independent of z . Then the cross-sections remain planar and parallel[6].

If ϵ_{zz} is the direct z -axis strain and ζ is the local z -axis displacement, then

$$\epsilon_{zz} = \frac{\partial \zeta}{\partial z} = c = \text{constant.}$$

The radial component of the displacement depends only on r ; this leads to the solution:

$$\xi = xf(r), \quad \eta = yf(r), \quad \zeta = cz,$$

where ξ is the local x -axis displacement and η is the local y -axis displacement.

There is a displacement function because:

$$\xi dx + \eta dy + \zeta dz = rf(r) dr + cz dz$$

is a total differential.

The Lamé and Clapeyron equations are satisfied if the volumetric dilatation θ is constant.

Then $2f + r df/dr = 2a$ or $f = a + (b/r^2)$, where a and b are constants and $\theta = 2a + c$.

It can be recognized that the principal directions of the strain tensor at a point P are those of the radius vector HP , the tangential vector (perpendicular to the meridian plane $P0z$) and the parallel to $0z$. The corresponding strains are respectively:

$$\epsilon_r = a - (b/r^2), \quad \epsilon_\theta = a + (b/r^2), \quad \epsilon_z = c.$$

In the case of uniaxial tension on the ends of the intermediary tube (Fig. 2), we have:

$$\sigma_r = 0, \quad \sigma_\theta = 0, \quad \sigma_z = F/[\pi(r_e^2 - r_i^2)],$$

here r_e and r_i denote, respectively, the external and internal radius of the intermediary tube under tension. Then:

$$2(\lambda + \mu)a + \lambda c = 0, \quad b = 0 \quad \text{and} \quad 2\lambda a + (\lambda + 2\mu)c = F/[\pi(r_e^2 - r_i^2)],$$

where λ , μ are Lamé's constants.

A finite element calculation has optimized the form of the specimen (Fig. 2).

The main advantage of the proposed direct tensile test is evidenced by the uniformity of uniaxial tension stress throughout the test volume. Thanks to its cylindrical symmetry, there is no bending or torsional stresses, no stress concentrations arising from geometrical irregularities of the

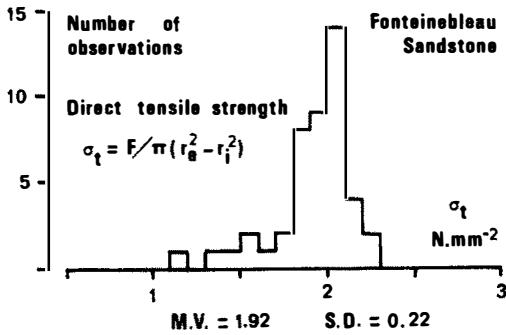


Fig. 3. Histogram of forty-five direct tensile test observations.

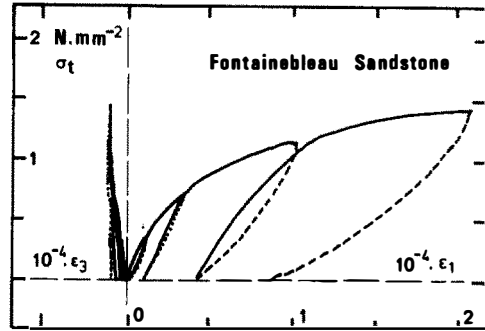


Fig. 4. Stress-strain curve of a Fontainebleau sandstone under direct tension test.

sample and no end restraint effects perturbing the stress field: most of the observed failures occur in the central part of the specimen.

In addition, tensile strength is the most fundamental parameter involved in consideration of rock fracture, and since it cannot be deduced directly from atomistic considerations of rock's constituent minerals, it is defined as a bulk property using the uniaxial tensile test as the basis of definition.

4. EXPERIMENTAL RESULTS ON DIRECT TENSILE TESTS

Several series of tests with optimized dimensions ($r_e = 25\text{ mm}$ for external radius and $r_i = 13\text{ mm}$ for internal radius) have given an average uniaxial tensile strength $\sigma_t = F / [\pi(r_e^2 - r_i^2)]$ for concrete and rock specimens. The histogram of observations is presented in Fig. 3. The stress-strain curve of a sandstone is depicted by Fig. 4.

5. DIRECT SHEAR STRENGTH

The shear resistance is of considerable concern for intense short-pulse blast, penetration of projectiles into concrete, seismic loading of nuclear containments or tall building structures, and also it is of fundamental importance in problems such as the state of stress and the mechanism of earthquakes along crustal faults, or the mechanical behaviour of jointed and faulted rocks.

Shear strength is often used to cover several different concepts such as (a) strength against pure shear, (b) shear stress required for failure without normal stress, (c) shear diagram on solid interface depending upon normal stress and (d) Mohr's stress envelope.

According to Everling[7], shear strength $\tau = T/A$ can be defined as the breaking shearing stress applied to an imposed surface supporting no normal force, where T is the shearing force necessary to cause failure along a surface and A denotes the cross-sectional area along which failure occurs. Shear strength of rock is often measured by torsion of a cylindrical specimen or a specimen with a neck or by a single shear test, double shear test and punch test. In these tests, tensile stresses are present. These are caused by bending and stress concentrations near the shearing edge. High shear stresses occur at the loading edges and hence stress is not uniform on the fracture surface. Then, the breaking force will be lower than that when stress distribution is uniform and permits fractures to develop freely.

Several methods are devised for measuring shear strength of rock: torsion test, single shear test, double shear test, punch test, shear-loaded beam with starter notches according to mode II of fracture mechanics (Fig. 5).

Rock materials are usually weaker in tension and comparatively stronger in shear, the cracking will often occur essentially in tension. It must be borne in mind that in such a case, the test was in fact an indirect tension test.

The main requirements of mode II test specimen must be: simple compact geometry, ease of preparation, simple loading system and stress conditions little affected by extremely small geometric alterations.

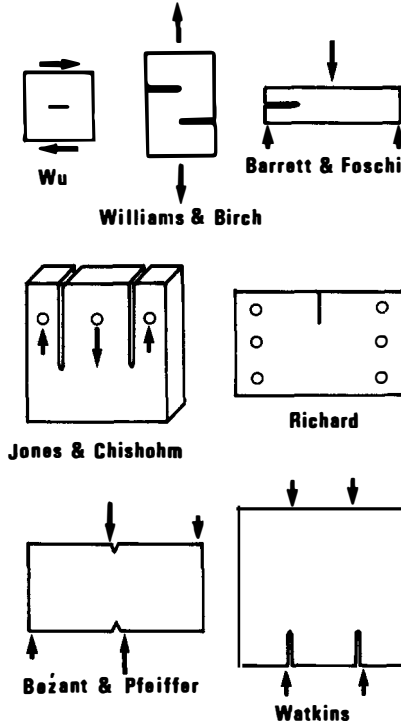


Fig. 5. Existing mode II test specimens of fracture mechanics.

Attempts to realize mode II crack propagation on a laboratory scale usually fail because mode I growth takes over. On the other hand, traces of mode II growth are often detected at, or after earthquake slipping. The following part of the present paper proposes a direct shear test that maximizes mode II conditions of crack propagation in rocks.

6. PROPOSED DIRECT SHEAR TEST

Consider a circular tube of axis $0z$ subjected, on its internal and external faces, to a shear stress parallel to $0z$ (Fig. 6). It can be understood that the applied load generates a simple sliding parallel to $0z$ of the different cylindrical layers with axis $0z$, which constitute the cylinder: each of them is subjected to a shear stress parallel to axis $0z$. This leads to the following solution:

$$\xi = 0$$

$$\eta = 0$$

$$\zeta = f(r)$$

where

$$r = \sqrt{x^2 + y^2}.$$

For a homogeneous isotropic and elastic solid in its natural initial state, the governing equations are:

$$(\lambda + \mu) \frac{\partial \theta}{\partial x_i} + \mu \Delta \zeta_i + \rho X_i = 0,$$

where

$$\theta = \sum_j \frac{\partial \xi_j}{\partial x_j}.$$

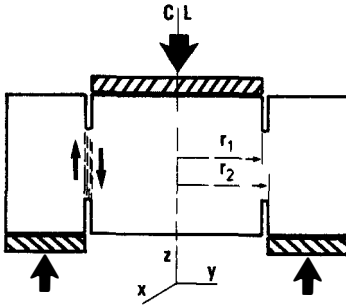


Fig. 6. Geometry of the shearing zone of the direct shear test specimen.

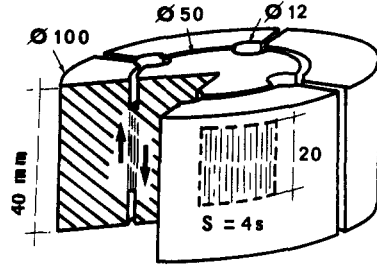


Fig. 7. Optimized dimensions of the proposed direct shear test specimen.

These equations are reduced to:

$$\Delta f = 0 \quad \text{then} \quad f = A \log r + B.$$

In this case, we have (A and B are constants):

$$\sigma_{11}, \sigma_{22}, \sigma_{33}, \sigma_{12} \text{ equal zero}$$

and

$$\sigma_{13} = \mu \left(\frac{\partial \zeta}{\partial x} \right) = \mu A \frac{x}{r^2},$$

$$\sigma_{23} = \mu \left(\frac{\partial \zeta}{\partial y} \right) = \mu A \frac{y}{r^2}.$$

On a cylindrical tube of axis $0z$, with a radius r , the longitudinal shear stress is:

$$\sigma_{zr} = \mu \frac{A}{r}.$$

The stress state is a simple shear.

If the material presents an elasticity of second order without the incompressibility assumption, the elastic solution shows that in addition to a shear stress ($\sigma_{rz} = \sigma_{zr}$) on facets perpendicular to $0r$ and $0z$, the sliding induces normal stresses on these facets perpendicular to 0θ (different stresses for the 3 directions of facets). This is the Reynolds dilatancy effect[6].

To avoid this effect, the specimen subjected to direct shearing—defined as mode II of fracture mechanics—is fabricated as shown in Fig. 7.

The axial load is applied on the central cylinder of the specimen which is retained by the four concentric tubular parts. The notches define the sheared zone $S = 4s$.

The specimen geometry has been optimized by a numerical analysis of stress intensity factors in mixed mode problems by path independent integrals J_I and J_{II} [8]. A criterion for deciding whether the crack will grow in mode I by formation and extension of a kink or in mode II in the original crack direction, was established by comparing the stress intensity factors $K_{I\max}$ for a small kink with $K_{II\max}$ for the main crack. If K_{Ic} and K_{IIc} denote the critical stress intensity factors for mode I and II respectively, mode II growth will be preferred to mode I if

$$\chi = \frac{K_{II\max}}{K_{I\max}} > \frac{K_{IIc}}{K_{Ic}} = \chi_c.$$

7. EXPERIMENTAL RESULTS ON DIRECT SHEAR TESTS

Several series of tests have been performed on specimens of concrete and rock at different sizes to analyse the scale effect. Figure 8 shows specimens after test restored by gluing. Figure 9 presents a histogram of direct shear tests on Fontainebleau sandstone.

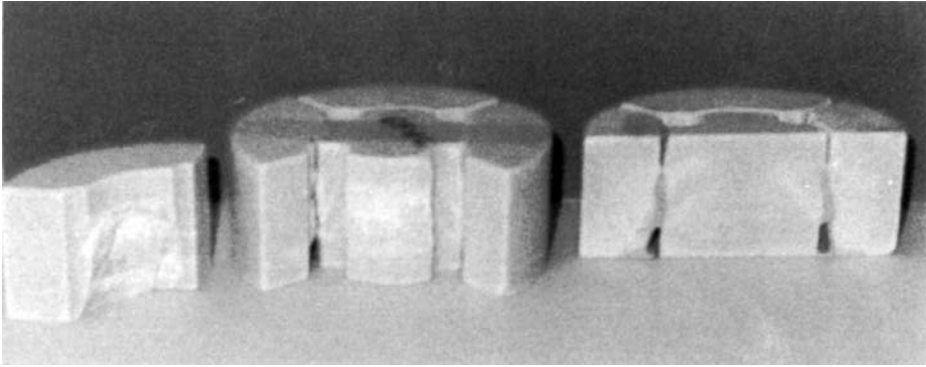


Fig. 8. Direct sheared specimens restored by glueing.

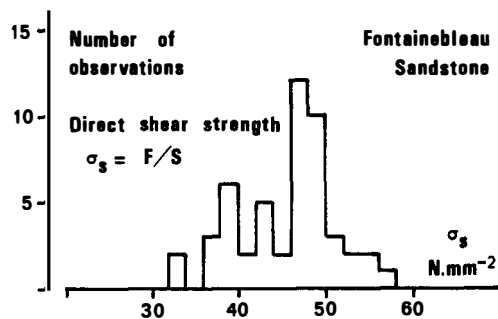


Fig. 9. Histogram of fifty direct shear test observations on Fontainebleau sandstone.

8. CONCLUDING REMARKS

The unsuitability of the usual testing techniques for the determination of tensile and shear strengths of concrete and rock materials has suggested these devices for evaluating the direct tensile and direct shear strength of concrete and rocks. The two proposed testing arrangements simplify the loading equipment. They are practical and reliable. They also facilitate the testing procedure when concrete and rock are subjected to severe and hostile environmental conditions. Finally, they can both be used as routine tests.

REFERENCES

- [1] R. D. Lama and V. S. Vutukuri, *Handbook on Mechanical Properties of Rock*, Vol. 1, Trans. Tech. Pub. (1978).
- [2] A. Roberts, *Geotechnology—An Introductory Text for Students and Engineers*. Pergamon Press, Oxford (1977).
- [3] I. Hawkes and M. Mellor, Uniaxial testing in rock mechanics laboratories. *Engng Geology* 4, 177–285 (1970).
- [4] F. Carneiro, Une nouvelle méthode d'essai pour déterminer la résistance à la traction du béton. Réunion des Laboratoires d'Essais de Matériaux, Juin (1947).
- [5] J. F. Wright, Comments on an indirect tensile test on concrete cylinders. *Mag. Concr. Res.* 7, 87–96 (1955).
- [6] J. Mandel, *Cours de Mécanique des Milieux Continus. Mécanique des Solides*. Tome II, Gauthier-Villars (1966).
- [7] G. Everling, Comments upon the definition of shear strength. *Int. J. Rock Mech. Mining Sci.* 1, 145–154 (1964).
- [8] H. D. Bui, Découplage du mode mixte de rupture par utilisation de deux nouvelles intégrales indépendants du contour, *C.R. Acad. Sci., Paris* 235, 521 (1982).