



HAL
open science

Cyclin dependent kinase 4/6 inhibitor palbociclib synergizes with BCL2 inhibitor venetoclax in experimental models of mantle cell lymphoma without RB1 deletion

Diana Malarikova, Radek Jorda, Kristyna Kupcova, Jana Senavova, Alexandra Dolnikova, Eva Pokorna, Dmitry Kazantsev, Kristina Nozickova, Dana Sovilj, Celine Bellanger, et al.

► **To cite this version:**

Diana Malarikova, Radek Jorda, Kristyna Kupcova, Jana Senavova, Alexandra Dolnikova, et al.. Cyclin dependent kinase 4/6 inhibitor palbociclib synergizes with BCL2 inhibitor venetoclax in experimental models of mantle cell lymphoma without RB1 deletion. *Experimental Hematology & Oncology*, 2024, 13, pp.34. 10.1186/s40164-024-00499-2 . hal-04666538

HAL Id: hal-04666538

<https://hal.science/hal-04666538>

Submitted on 1 Aug 2024

HAL is a multi-disciplinary open access archive for the deposit and dissemination of scientific research documents, whether they are published or not. The documents may come from teaching and research institutions in France or abroad, or from public or private research centers.

L'archive ouverte pluridisciplinaire **HAL**, est destinée au dépôt et à la diffusion de documents scientifiques de niveau recherche, publiés ou non, émanant des établissements d'enseignement et de recherche français ou étrangers, des laboratoires publics ou privés.

CORRESPONDENCE

Open Access



Cyclin dependent kinase 4/6 inhibitor palbociclib synergizes with BCL2 inhibitor venetoclax in experimental models of mantle cell lymphoma without *RB1* deletion

Diana Malarikova^{1,2}, Radek Jorda³, Kristyna Kupcova^{2,4}, Jana Senavova^{2,4}, Alexandra Dolnikova¹, Eva Pokorna¹, Dmitry Kazantsev¹, Kristina Nozickova¹, Dana Sovilj⁵, Celine Bellanger⁶, David Chiron⁶, Ladislav Andera^{4,5,7}, Vladimir Krystof³, Miroslav Strnad⁸, Karel Helman⁹, Magdalena Klanova^{1,2}, Marek Trneny², Ondrej Havranek^{2,4} and Pavel Klener^{1,2*}

Abstract

Background Mantle cell lymphoma (MCL) is a chronically relapsing malignancy with deregulated cell cycle progression. We analyzed efficacy, mode of action, and predictive markers of susceptibility to palbociclib, an approved CDK 4/6 inhibitor, and its combination with venetoclax, a BCL2 inhibitor.

Methods A panel of nine MCL cell lines were used for in vitro experiments. Four patient derived xenografts (PDX) obtained from patients with chemotherapy and ibrutinib-refractory MCL were used for in vivo proof-of-concept studies. Changes of the mitochondrial membrane potential, energy-metabolic pathways, AKT activity, and pro-apoptotic priming of MCL cells were evaluated by JC-1 staining, Seahorse XF analyser, genetically encoded fluorescent AKT reporter, and BH3 profiling, respectively. MCL clones with gene knockout or transgenic (over) expression of *CDKN2A*, *MYC*, *CDK4*, and *RB1* were used to estimate impact of these aberrations on sensitivity to palbociclib, and venetoclax.

Results Co-targeting MCL cells with palbociclib and venetoclax induced cytotoxic synergy in vitro and in vivo. Molecular mechanisms responsible for the observed synthetic lethality comprised palbociclib-mediated downregulation of anti-apoptotic MCL1, increased levels of proapoptotic BIM bound on both BCL2, and BCL-XL and increased pro-apoptotic priming of MCL cells mediated by BCL2-independent mechanisms, predominantly palbociclib-triggered metabolic and mitochondrial stress. Loss of *RB1* resulted in palbociclib resistance, while deletion of *CDKN2A* or overexpression of *CDK4*, and *MYC* genes did not change sensitivity to palbociclib.

Conclusions Our data strongly support investigation of the chemotherapy-free palbociclib and venetoclax combination as an innovative treatment strategy for post-ibrutinib MCL patients without *RB1* deletion.

Keywords Cyclin-dependent kinase (CDK) inhibitors, Palbociclib, BCL2, Venetoclax, RB1, Mantle cell lymphoma (MCL)

*Correspondence:

Pavel Klener
pavel.klener2@lf1.cuni.cz

Full list of author information is available at the end of the article



© The Author(s) 2024. **Open Access** This article is licensed under a Creative Commons Attribution 4.0 International License, which permits use, sharing, adaptation, distribution and reproduction in any medium or format, as long as you give appropriate credit to the original author(s) and the source, provide a link to the Creative Commons licence, and indicate if changes were made. The images or other third party material in this article are included in the article's Creative Commons licence, unless indicated otherwise in a credit line to the material. If material is not included in the article's Creative Commons licence and your intended use is not permitted by statutory regulation or exceeds the permitted use, you will need to obtain permission directly from the copyright holder. To view a copy of this licence, visit <http://creativecommons.org/licenses/by/4.0/>. The Creative Commons Public Domain Dedication waiver (<http://creativecommons.org/publicdomain/zero/1.0/>) applies to the data made available in this article, unless otherwise stated in a credit line to the data.

To the editor

Mantle cell lymphoma (MCL) is a subtype of B-cell lymphomas characterized by deregulation of cell cycle progression at the G₁-S phase transition as a consequence of cyclin D1 overexpression [1, 2]. Palbociclib, a highly selective cyclin-dependent kinase (CDK) 4/6 inhibitor demonstrated single-agent activity in patients with relapsed and/or refractory (R/R) MCL. Venetoclax, a BCL2 inhibitor also demonstrated clinical activity in MCL, but the remissions were short calling for rational drug combinations [3–6]. We analyzed efficacy, mode of action, and predictive markers of susceptibility to palbociclib, and provide sound preclinical rationale for its combination with venetoclax.

Anti-proliferative and cytotoxic effect of palbociclib was analyzed using a panel of nine MCL cell lines (Supplemental Table 1) with promising anti-proliferative effect (median IC₅₀ 13.6 nM), however the cytotoxic effect was detected only after extremely high concentrations of palbociclib with LD₅₀ above 10μM in all cell lines.

In vitro, palbociclib increased number of cells arrested in the G1 phase, and downregulated critical cell cycle regulators including RB1 protein, while expression of CDKs and BCL2 family proteins remained without significant changes (Supplemental Figs. 1, 2 A). Despite this, in vitro screen demonstrated synergistic efficacy between palbociclib and venetoclax (Supplemental Table 2). The synergy was subsequently confirmed in vivo using a panel of 4 patient-derived xenograft (PDX) models derived from patients with R/R MCL including ibrutinib resistant

cases (Fig. 1, Supplemental Table 3). Similar observations were recently reported by Yuxuan Che et al. [7]. Except for moderate downregulation of MCL1, ex vivo protein expression analysis did not significantly differ from in vitro results. Co-immunoprecipitation analyses after palbociclib revealed increased amounts of BCL2 and BCL-XL bound to BIM ex vivo and in vitro (but only after prolonged cultivation). (Supplemental Fig. 2B, 3).

Because the mode of action behind the synergy could not be explained by significant changes in the levels of free or bound BCL2 proteins, we speculated that cell cycle arrest induced by palbociclib might lead to complex changes that prime MCL cells to venetoclax-triggered apoptosis. Indeed, reactive oxygen species (ROS) and JC-1 analyses revealed increased mitochondrial ROS production and increased mitochondrial depolarization of MCL cells after exposure to palbociclib (Supplemental Fig. 4A, B). Enhanced mitochondrial proapoptotic priming by complex mechanisms independent of BCL2 proteins was confirmed by intracellular BH3 profiling (Supplemental Fig. 4C). Although the SeaHorse analysis did not reveal any specific impact of palbociclib on oxidative phosphorylation, both basal and maximal glycolytic activity was decreased in 6 out of 7 analyzed MCL cell lines (Supplemental Figs. 5 and 6). Using a genetically encoded AKT activity biosensor we demonstrated that AKT activity corresponded with the change of glycolytic activity- it was decreased in MINO and UPF1H cells but increased in JEKO-1 (Supplemental Fig. 7).

These data point to the fact that palbociclib leads to complex deregulation of key energy metabolic pathways

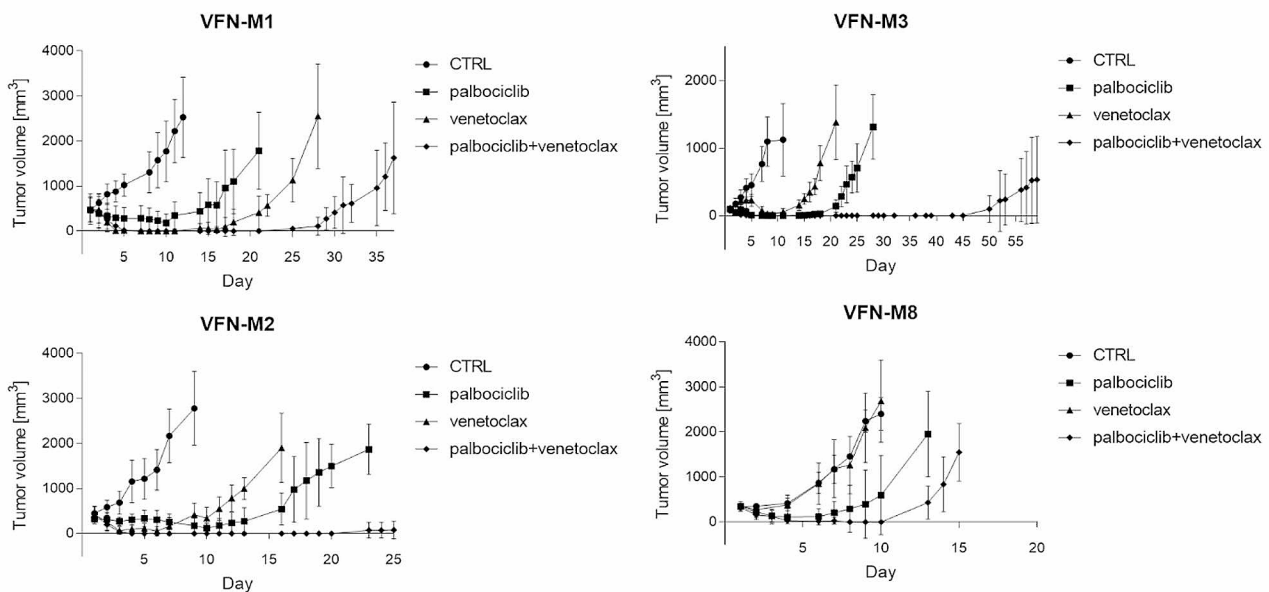


Fig. 1 Effect of palbociclib and venetoclax on PDX models of R/R MCL. Legend: Synergistic effect of CDK4/6 inhibition with palbociclib and BCL2 blockage with venetoclax on a panel of 4 PDX models of R/R MCL. X-axis shows days from initiation of therapy. Y-axis shows calculated tumor volume of PDX tumors (means ± standard deviations)

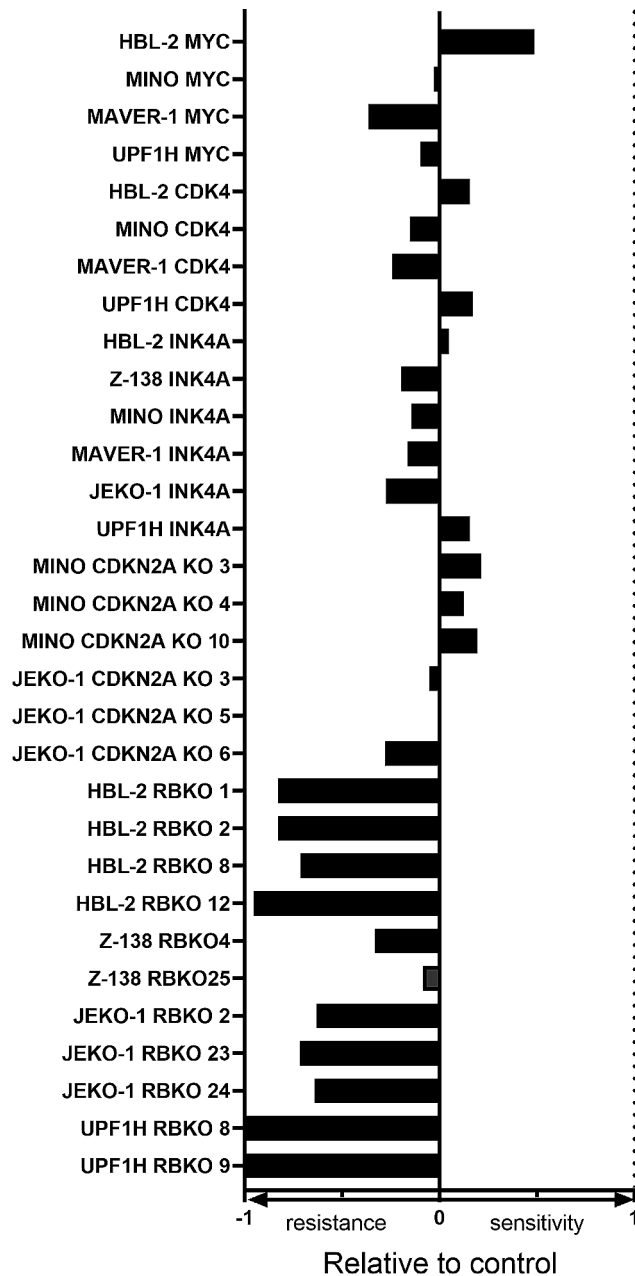


Fig. 2 Effect of palbociclib on clones with overexpression of *MYC*, *CDK4*, *CDKN2A* and *K/O* of *CDKN2A* and *RB*. Legend: the figure shows relative comparison of half-maximal inhibitory concentration (IC₅₀, in nM) in response to palbociclib between MCL clones (IC₅₀_{clone}) and corresponding controls (IC₅₀_{CTRL}). The bars were constructed according to the following formulas: $1 + \text{IC}_{50\text{CTRL}} / \text{IC}_{50\text{clone}}$ in the cases when $\text{IC}_{50\text{clone}} > \text{IC}_{50\text{CTRL}}$; $1 - \text{IC}_{50\text{clone}} / \text{IC}_{50\text{CTRL}}$ in the cases when $\text{IC}_{50\text{CTRL}} > \text{IC}_{50\text{clone}}$. Positive and negative bars represent more sensitive and resistant clones, respectively (compared to controls)

and priming to mitochondrial apoptosis. However, precise molecular mechanisms that mediate the observed palbociclib-mediated priming of MCL cells to venetoclax remain to be elucidated.

MCL is characterized by several other recurrent molecular / cytogenetic lesions that deregulate G1-S cell cycle transition, including deletions of *CDKN2A* or *RB1*, and amplification of *CDK4* or *MYC* genes. To evaluate the impact of these aberrations on palbociclib (and venetoclax) sensitivity, we derived MCL clones with transgenic (over)expression of p16INK4A, *MYC*, and *CDK4*, as well as MCL clones with knockout of *CDKN2A* and *RB1* genes. We demonstrated that *RB1* gene knockout leads to acquired resistance to palbociclib, which is in line with previous reports in breast cancer [8, 9]. Other tested aberrations did not significantly change sensitivity to palbociclib. Of note, overexpression of *MYC* was associated with increased sensitivity to venetoclax (Fig. 2, Supplemental Fig. 8).

To sum up, the innovative, chemotherapy-free combination of an FDA-approved CDK4/6 inhibitor palbociclib, and a BCL2 inhibitor venetoclax is synthetically lethal in vitro and in vivo on a panel of chemotherapy and ibrutinib-refractory MCL. Molecular mechanisms behind the observed synergy include palbociclib-triggered downregulation of anti-apoptotic MCL1, increased levels of proapoptotic BIM bound on both BCL2, and BCL-XL and increased pro-apoptotic priming mediated by BCL2-independent mechanisms, predominantly palbociclib-induced metabolic and mitochondrial stress. Deletion of *RB1* represents a predictive marker of palbociclib resistance. In translation, our data strongly support investigation of palbociclib in combination with venetoclax as an innovative treatment strategy for R/R MCL patients without *RB1* deletion.

Abbreviations

CDK	Cyclin-dependent kinase
IC ₅₀	Half maximal inhibitory concentration
LD ₅₀	Median lethal dose
MCL	Mantle cell lymphoma
PDX	Patient derived xenograft
ROS	Reactive oxygen species
R/R	Relapsed and/or refractory

Supplementary Information

The online version contains supplementary material available at <https://doi.org/10.1186/s40164-024-00499-2>.

Supplementary Material 1

Acknowledgements

Not applicable.

Author contributions

PK and DM designed the study. DM, RJ, KK, JS, AD, EP, KN, DS, CD performed experiments. DK and OH prepared clones with knockout or overexpression of selected genes. KH performed statistical analyses. DCH, LA, OH, MK and PK contributed to interpretation of results and discussion. DM and PK wrote the manuscript. VK, MS, MT provided feedback of the manuscript. All authors discussed the results and contributed to the final version of manuscript.

Funding

The manuscript was supported by Grant Agency of the Czech Republic GA23-05474 S and GA19-08772 S, Ministry of Health of the Czech Republic grant AZV NU21-03-00386, all rights reserved, Charles University Center of Excellence UNCE/MED/016, PRIMUS 17/MED/09, PRIMUS 19/MED/07, National Institute for Cancer Research (EXCELES) LX22NPO5102, SVV: 260 634/2023. The study was also supported by a grant from The Leukemia & Lymphoma Society (LLS), grant i.d. MCL 7005-24.

Data availability

All data generated or analyzed during this study are included in this published article, figures and tables (and its supplementary information files). Raw data are available from the corresponding author on reasonable request.

Declarations

Competing interests

The authors declare that they have no competing interests.

Ethics approval and consent to participate

All animal procedures were performed in accordance with protocols approved by the Institutional Animal Welfare Committee and Czech Ministry of Agriculture under number MSMT-37330/2020-2.

Consent for publication

Not applicable.

Author details

¹Institute of Pathological Physiology, First Faculty of Medicine, Charles University, Prague, Czech Republic

²First Department of Internal Medicine – Hematology, First Faculty of Medicine, General University Hospital, Charles University, Prague, Czech Republic

³Department of Experimental Biology, Faculty of Science, Palacky University Olomouc, Olomouc, Czech Republic

⁴BIOCEV LF1 - Biotechnology and Biomedicine Centre, First Faculty of Medicine, Charles University, Prague, Czech Republic

⁵Institute of Biotechnology, Czech Academy of Sciences, Prague, Czech Republic

⁶Integrated Research Center in Immunology and Oncology, CRCI2NA, Nantes University, Nantes, France

⁷Institute of Molecular Genetics, Czech Academy of Sciences, Prague, Czech Republic

⁸Laboratory of Growth Regulators, Palacky University Olomouc and Institute of Experimental Botany, The Czech Academy of Sciences, Olomouc, Czech Republic

⁹Faculty of Informatics and Statistics, Prague University of Economics and Business, Prague, Czech Republic

Received: 1 September 2023 / Accepted: 8 March 2024

Published online: 25 March 2024

References

1. Wang K, et al. Cell cycle dysregulation in Mantle Cell Lymphoma: Genomics and Therapy. *Hematol Oncol Clin North Am.* 2020;34(5):809–23.
2. Silkenstedt E, Linton K, Dreyling M. Mantle cell lymphoma - advances in molecular biology, prognostication and treatment approaches. *Br J Haematol.* 2021;195(2):162–73.
3. Davids MS, et al. Phase I first-in-human study of Venetoclax in patients with relapsed or refractory Non-hodgkin Lymphoma. *J Clin Oncol.* 2017;35(8):826–33.
4. Eyre TA, et al. Efficacy of venetoclax monotherapy in patients with relapsed, refractory mantle cell lymphoma after Bruton tyrosine kinase inhibitor therapy. *Haematologica.* 2019;104(2):e68–71.
5. Clark AS, et al. Palbociclib (PD0332991)-a selective and potent cyclin-dependent kinase inhibitor: a review of Pharmacodynamics and Clinical Development. *JAMA Oncol.* 2016;2(2):253–60.
6. Leonard JP, et al. Selective CDK4/6 inhibition with tumor responses by PD0332991 in patients with mantle cell lymphoma. *Blood.* 2012;119(20):4597–607.
7. Che Y, et al. Dual targeting of CDK4/6 and Bcl-2 exhibits a potent antitumor effect on mantle cell lymphoma. *Blood Adv.* 2023;7(14):3361–5.
8. O'Leary B, et al. The Genetic Landscape and Clonal evolution of breast Cancer Resistance to Palbociclib plus Fulvestrant in the PALOMA-3 trial. *Cancer Discov.* 2018;8(11):1390–403.
9. Malorni L, et al. A gene expression signature of retinoblastoma loss-of-function is a predictive biomarker of resistance to palbociclib in breast cancer cell lines and is prognostic in patients with ER positive early breast cancer. *Oncotarget.* 2016;7(42):68012–22.

Publisher's Note

Springer Nature remains neutral with regard to jurisdictional claims in published maps and institutional affiliations.