



HAL
open science

Phytochemical Analyses and Antibacterial Activities of Jatropha tanjorensis J. L. Ellis and Saroja Leaves Extract against Clinical Pathogens

Cynthia Jesutomisin Komolafe, Ifeoma Irene Adetoyinbo, Felix Oluwasegun
Alao, Justina Folasayo Ogunsola

► **To cite this version:**

Cynthia Jesutomisin Komolafe, Ifeoma Irene Adetoyinbo, Felix Oluwasegun Alao, Justina Folasayo Ogunsola. Phytochemical Analyses and Antibacterial Activities of *Jatropha tanjorensis* J. L. Ellis and Saroja Leaves Extract against Clinical Pathogens. *Asian Journal of Applied Chemistry Research*, 2024, 15 (5), pp.9-23. 10.9734/ajacr/2024/v15i5298 . hal-04665873

HAL Id: hal-04665873

<https://hal.science/hal-04665873v1>

Submitted on 2 Aug 2024

HAL is a multi-disciplinary open access archive for the deposit and dissemination of scientific research documents, whether they are published or not. The documents may come from teaching and research institutions in France or abroad, or from public or private research centers.

L'archive ouverte pluridisciplinaire **HAL**, est destinée au dépôt et à la diffusion de documents scientifiques de niveau recherche, publiés ou non, émanant des établissements d'enseignement et de recherche français ou étrangers, des laboratoires publics ou privés.



Phytochemical Analyses and Antibacterial Activities of *Jatropha tanjorensis* J. L. Ellis and Saroja Leaves Extract against Clinical Pathogens

Cynthia Jesutomisin Komolafe ^{a*},
Ifeoma Irene Adetoyinbo ^a, Felix Oluwasegun Alao ^a
and Justina Folasayo Ogunsola ^a

^a Department of Biological Sciences, Bells University of Technology, Ota, Ogun State. Nigeria.

Authors' contributions

This work was carried out in collaboration among all authors. Author CJK conceptualized the study, performed the methodology and wrote original draft. Author CJK, IIA, FOA and JFO wrote, reviewed and edited the manuscript. All authors read and approved the final manuscript.

Article Information

DOI: <https://doi.org/10.9734/ajacr/2024/v15i5298>

Open Peer Review History:

This journal follows the Advanced Open Peer Review policy. Identity of the Reviewers, Editor(s) and additional Reviewers, peer review comments, different versions of the manuscript, comments of the editors, etc are available here: <https://www.sdiarticle5.com/review-history/120540>

Original Research Article

Received: 25/05/2024

Accepted: 27/07/2024

Published: 31/07/2024

ABSTRACT

Aim: The aim of this study was to investigate the phytochemical and antimicrobial characteristics of leaf extracts from *Jatropha tanjorensis* plant against some selected clinical pathogens.

Study Design: Experimental Study design (Quantitative).

Place and Duration of Study: Sample: The bacteria were obtained from the stock culture of the Microbiology laboratory at LUTH, Idi-Araba, Lagos State and Department of Biological Sciences, Bells University of Technology, Ota, Ogun State.

*Corresponding author: Email: cynthia.komolafe@bellsuniversity.edu.ng cynthiakomolafe210@gmail.com;

Cite as: Komolafe, Cynthia Jesutomisin, Ifeoma Irene Adetoyinbo, Felix Oluwasegun Alao, and Justina Folasayo Ogunsola. 2024. "Phytochemical Analyses and Antibacterial Activities of *Jatropha Tanjorensis* J. L. Ellis and Saroja Leaves Extract Against Clinical Pathogens". *Asian Journal of Applied Chemistry Research* 15 (5):9-23. <https://doi.org/10.9734/ajacr/2024/v15i5298>.

Methods: Fresh *Jatropha tanjorensis* leaves were obtained, identified, and then finely ground after being dried at room temperature. To obtain the extracts, two hundred grams (200g) of the leaves were macerated in one thousand milliliters (1000ml) of solvent. Phytochemical analyses were done on the extract utilizing suitable standard protocols. Using the agar well diffusion method, the leaf extracts' antibiotic sensitivity was assessed against selected bacteria, including *Salmonella typhi*, *Pseudomonas aeruginosa*, *Bacillus subtilis* ATCC 6633, *Enterococcus faecalis* FELAO97, *Escherichia coli*, *Bacillus aureus* ATCC 25923, and *Bacillus aureus* ATCC 25923.

Results: The qualitative phytochemical analysis revealed that while phlobatannins were absent from all extracts, other compounds found included saponin, alkaloids, phenols, flavonoids, reducing sugars, terpenoids, steroids, and tannins. According to the quantitative phytochemical analysis, reducing sugars from methanolic extract had the lowest concentration (20.39 mg/100g) and flavonoids from hot water extract had the highest concentration (98.55 mg/100g). With a zone of inhibition of 19.83 mm against *S. aureus*, the cold-water extract exhibited the highest inhibitory effect, while the methanolic extract displayed the lowest zone of inhibition, 13.17 mm, against *B. subtilis*. When compared to other isolates, *B. subtilis* had the lowest MIC value of 10.24 mg/ml and other isolates had the highest MIC value of 20.48 mg/ml. A GC-MS analysis identified fifty-seven (57) bioactive compounds with 1, 2, 3-Benzenetriol having the highest percentage of 66.38%.

Conclusion: This study suggests that *Jatropha tanjorensis* may be a potential antibacterial drug, but more thorough study and collaboration are still necessary.

Keywords: *Jatropha tanjorensis*; antibacterial; bioactive compounds; extraction; clinical pathogens.

1. INTRODUCTION

“Resistance to antimicrobial agents is a major global health problem. Although a number of new antibiotics have been produced by pharmacological industries in the last three decades, microorganism resistance to these drugs has increased” [1]. “Incidents attributable to drug resistant microorganisms and the emergence of unknown disease-causing microbes, raised enormous public health concern despite the progress made in understanding microorganisms and their regulation in developed nations” [2]. “Some antibiotics have extreme unwanted side effects that restrict their use, so there is a pressing need to develop new antimicrobial agents with minimal unwanted side effects that are very successful. There is an endless search for new novel antimicrobials and a need to combat the incessant resistance of microorganisms to most antibiotics and plants are a potential source of novel prototypes of antibiotics. Bioactive compounds within plants are responsible for their medicinal benefit, hence the phytochemical screening of the *Jatropha tanjorensis* plant” [3].

“Medicinal plants are key sources of bio-active compounds for herbal medicine, antibiotics, antioxidants, and pharmaceutical drugs [4]. Natural plants contain antibacterial and phytochemical properties similar to synthetic antibiotics and therefore have been used in traditional medicine to treat infections [5].

Because they contain minerals that are necessary for body building and the regulation of bodily functions, some of these plants are used as food and sources of nutrients. Although many of these plants have been identified, the likelihood of them being used as an antibacterial drug has been restricted by the lack of analytical data regarding their chemical composition [6], however, this study has highlighted some of the composition of the *Jatropha tanjorensis* plant. The use of traditional medicines in treatment and management of various disease is now encouraged by World Health Organization (WHO) due to their ready availability, cost effectiveness and high potency against some diseases [1] and there has been a great deal of interest in the investigation of various extracts obtained from traditional medicinal plants as prospective sources of new antimicrobial agents over the past two decades” [7].

“*J. tanjorensis* is a perennial herb that belongs to the family Euphorbiaceae; common name includes: “*Jatropha*”, “Hospital too far”, “Catholic vegetables” and “Iyana Ipaja” in Yoruba language [8]. The name “*Jatropha*” is derived from the Greek word “*Jatros*” (Doctor) and “*trophe*” (food) which connotes its medicinal uses” [9].

“*Jatropha tanjorensis* is a multipurpose plant, cultivated for medicinal applications and used as food. Virtually every part of the plant is beneficial and nutritional in various ways. Its many benefits

depend on which part of the plant is being used. The leaves are commonly cooked and eaten like vegetables such as fluted pumpkin leaves (Ugu) and spinach” [10].

“*Jatropha tanjorensis* leaves are consumed in Nigeria as soups and as a tonic with the claim that it increases blood volume. The leaves are also employed traditionally in the treatment of diabetes and cardiovascular diseases” [11]. “Extracts from the plant leaves have also been used in Nigeria to control sickle cell anaemia” [12]. “*Jatropha* leaves are reported to be rich in beta blockers, anti-cancer agents, anti-anaemic, anti-microbial, anti-plasmodial and antioxidant effects caused by malaria parasite oxidative stress” [13]. “The leaf of *Jatropha tanjorensis* has an anti-anaemic effect (potential for blood replenishment). Some essential biogenic principles that are important for rapid haemopoiesis in the bone marrow were found to contain the leaf” [14]. “In Southwest Nigeria, infusion of *Jatropha tanjorensis* leaves is administered orally for diabetic symptoms. Three leaf extract fractions were assessed for their anti-diabetic potentials” [15]. Hexane, chloroform and methanol leaf extracts exhibited varying degree of antimicrobial and anti-inflammatory activities” [16]. “Less study has been documented on *Jatropha tanjorensis* unlike other *Jatropha* species e.g *Jatropha curcas*. Hence this study aims to help clinicians in seeing the antimicrobial properties of the *Jatropha tajonrensis* leaves and the existence of highly potential, recognizable phytochemical and active compounds can be identified and thus, find their way into the manufacture of antimicrobial drugs”.

2. METHODOLOGY

2.1 Collection of *Jatropha tanjorensis* Leaves

Fresh *Jatropha tanjorensis* leaves were collected from a mini household farm in Federal College of Education, Osiele, Abeokuta, Ogun State, Nigeria, and identified by a Botanist from the Department of Biological Sciences at Bells University of Technology, Ota. After being shade-dried for about a month at 26 to 28°C, the leaves were finely ground with an electric blender. An airtight plastic container was used to store the finely ground plant material for future use. The extraction method adopted was maceration using cold distilled water, warm distilled water and 100% methanol for 72 hours.

2.2 Preparation of Plant Extract

A quantity of 200 g of the finely ground *J. tanjorensis* leaves were macerated in each solvent in a sterile clean plastic container for 72 hours with frequent agitation, after which it was first filtered with muslin cloth, and then with Whatman No1 filter paper into a clean volumetric flask and the filtrates were concentrated using the rotary evaporator. The dried crude extracts were stored in air-tight containers.

2.3 Sterility Test of the Plant Extracts

One millilitre of each extract (methanolic, hot and cold water) was inoculated onto nutrient agar plates to determine its sterility and incubated at 37°C for 24 hours. The absence of microbial growth on the plates after incubation demonstrated the sterility of the extracts.

2.4 Test Organisms (Clinical Pathogens) Used

The test bacteria pathogens assayed in this study were Laboratory strains which include Clinical and Standard strains of *Staphylococcus aureus*, *Bacillus subtilis*, *Enterococcus faecalis* FELAO97, *Escherichia coli* NCTC 10418, *Bacillus subtilis* ATCC 6633, *Staphylococcus aureus* ATCC 25923, *Salmonella typhi* ATCC 13311 and *Pseudomonas aeruginosa* ATCC 27853 obtained from the stock culture of the Microbiology Laboratory in Lagos University Teaching Hospital (LUTH) and Bells University of Technology. They were primarily isolated on various diagnostic and selective media to suppress other contaminants. They were then subcultured into a neutral medium; Mueller-Hinton Agar, to remove the effects of indicators and suppressive and selective chemical agents in primary isolation culture media. They also subcultured into sterile nutrient broth for optical density adjustment. Organisms were incubated for a period of 24 hours at 37 °C.

2.5 Standardization of Inoculum / Preparation of Bacterial Suspension

The bacterial biomass of the assay organisms was adjusted using a reference standard suspension. All the bacterial turbidities were adjusted using sterile distilled water. A loopful of the bacterial liquid cultures was added to the distilled water and the turbidity was matched with that of 0.5 McFarland turbidity standards which is equivalent to 10⁸ CFU/ml. If the suspension was less turbid than that of the standard, then more

isolates was added, but if more turbid, then more sterile distilled water were added so it could be as turbid as the standard. The adjusted suspension was used for the assay.

2.6 Preparation of Mcfarland Standard Solution

One millilitre of concentrated hydrogen tetraoxosulphate (VI) acid (H_2SO_4) was added to 99 ml of distilled water to prepare a 1 %v/v solution of the acid, the solution was mixed properly. Then 0.5 g of dihydrate barium chloride ($BaCl_2 \cdot 2H_2O$) was added to 50 ml of sterile distilled water to prepare 1 % w/v of barium chloride. Thereafter, 0.6 ml of the barium chloride solution was added to 99.4 ml of the sulphuric acid solution, and then mixed properly. 9 ml of the turbid solution was transferred into a test tube of the same type used in preparing the test inoculum.

2.7 Sample (Extract) Reconstitution

There were three working samples, 500 mg/ml, 250 mg/ml, and 125 mg/ml which were achieved by weighing 5 g of extract and dissolving in sterile distilled water as solvent and then further diluting twice to have other working values.

2.8 Antibacterial Susceptibility Test

The test bacteria were reconstituted to match the turbidity of 0.5 McFarland standards to be inoculated on Mueller-Hinton agar (Kumar et al., 2012) [9]. The medium (Mueller-Hinton Agar) which was prepared for assaying was maintained at 45 °C so as to preserve molten nature until it was needed. Test organisms were mixed in vortex apparatus to homogenize the assay organisms. 1 ml portion of standardized organisms was seeded into the 25 ml agar and was mixed thoroughly using the roll-palm method before pouring in Petri dish. Agars were allowed to set and organized for cork boring.

After allowing all the seeded agars to solidify, a cork borer, size 10 mm diameter was used for boring the wells. It was flamed and allowed to cool before using it to bore a hole in each of the sectors of the Petri dishes. All the cut portions were carefully ejected and thrown into a dish of disinfectant. 150 µl portions of various working concentrations (500 mg/ml, 250 mg/ml and 125 mg/ml) was dispensed into the wells and allowed to stand for 4 hours for diffusion to take place before incubation. In order to allow leaf extracts to diffuse through the agar media to form inhibition zones, plates were incubated uprightly

for 24 hours at 37 °C [17]. Using a zone reader (ruler), the diameters of the inhibition zones for various leaf extract concentrations against different bacteria were measured in millimeters. All the antimicrobial tests were tripled, and the mean values were collected.

2.9 Antibiotic Standard (Ciprofloxacin) Preparation

Four working standards of pure Ciprofloxacin: 20 µg/ml, 10 µg/ml, 5 µg/ml and 2.5 µg/ml solutions of the standard solutions were achieved by weighing, dissolving and diluting the standard.

2.10 Determination of Minimum Inhibitory Concentration

This was carried out by adopting the prescribed method of the Clinical and Laboratory Standard institute [18]. Thirteen working concentrations of the samples were prescribed and were used in order to establish the minimum concentration that inhibited a particular assay organism that responded to the extracts. The concentrations were 0.005, 0.01, 0.02, 0.04, 0.08, 0.16, 0.32, 0.64, 1.28, 2.56, 5.12, 10.24, and 20.48 mg/ml. Agar dilution technique of Hugo and Russell [19] was used because of the colourful nature of the extracts. To achieve these working concentrations, three different stock concentrations were prepared from which the various working concentrations were also prepared. These stocks concentrations were 10 mg/ml, 20 mg/ml, and 40 mg/ml.

One millilitre portion of calibrated test organisms that responded to the extracts (*Staphylococcus aureus*, *Enterococcus faecalis*, *Bacillus subtilis*) was seeded into the 25 ml molten agar and was mixed thoroughly using the roll-palm method before pouring in thirteen Petri dishes (containing the thirteen working concentrations). Each Petri dish was then divided into 3 compartments using a marker and each compartment had the test organisms each in a small ring. The plates were then incubated for 72 hours at 24 °C. The lowest concentration of the extract that inhibited the visible growth of the test organisms is the minimum inhibitory concentration (MIC) [20].

2.11 Qualitative Phytochemical Screening of Leaf Extracts of *Jatropha tanjorensis*

Qualitative analysis was carried out to ascertain the presence of the different phytochemical

compounds contained in the extract. The extracts were subjected to thin-layer and paper chromatographic procedures at the laboratory. This was done in order to separate the components into individual compounds for appropriate identification of all components of the extracts. Preliminary phytochemical analysis of the extracts was carried out with reference to the standard methods of Sofowora [21,22]. The extract solution was then used for phytochemical screening.

2.12 GC-MS Analysis (Gas Chromatography-Mass Spectrometry)

GC-MS extract analysis was performed using the GC-MS Clarus 500 Perkin Elmer method, and gas chromatography interfaced with a mass spectrometer (GC-MS) under the following conditions: The column Elite-1 fused capillary silica column (30 mm x 0.25 mm ID x 1 mdf, made of 100% Dimethyl poly silaxane) was run in 70 eV electron impact mode with helium (99.999%) as the carrier. The oven temperature was programmed to rise from 110 °C (isothermal for 2 minutes) to 200 °C at a rate of 5 °C per minute to 280 °C, and to remain at 280 °C for 9 minutes. Mass spectra were recorded at 70 eV, with a 0.5-second scan interval and fragments ranging from 40 to 550 Da. The average runtime for the GCMS was 36 minutes [22]. Through the National Institute of Standards and Technology (NIST) library, compounds were established.

3. RESULTS

3.1 Antibacterial Screening of Methanolic and Aqueous Extract of *Jatropha tanjorensis*

The results of the antibacterial screening of methanolic and aqueous (cold and hot) extracts of *Jatropha tanjorensis* leaves on *Staphylococcus aureus* ATCC 25923, *Enterococcus faecalis* FELAO97, *Salmonella typhi* ATCC 13311, *Staphylococcus aureus* (clinical isolate), *Escherichia coli* NCTC 10418, *Pseudomonas aeruginosa* ATCC 27853, *Bacillus subtilis* (clinical strains), *Bacillus subtilis* ATCC 6633 showed that there was minimal activity of the plant on the test organisms as represented in (Tables 1 to 3). From this study, it was observed that the methanolic extract had effect on *Bacillus subtilis* (clinical isolate) and no effect on all other test organisms (Table 2). The hot water extract of the plant showed no activity on all test organisms

as depicted in Table 4, while the cold-water extract had better activity on some of the test organism as depicted in Table 3.

3.2 Qualitative Phytochemical Screening of Aqueous and Methanolic Leaf Extracts of *Jatropha tanjorensis*

The qualitative phytochemical screening of aqueous (hot and cold) and methanolic leaf extracts of *Jatropha tanjorensis* revealed the presence of phenols, saponins, terpenoids, steroids, flavonoids, tannins, phlobatanin, reducing sugars and alkaloids as depicted in Table 4. It was observed that both aqueous and methanolic leaf extract did not contain phlobatanin (Table 4). Steroids and terpenoids were not detected in the aqueous leaf extract of *J. tanjorensis* while the methanolic leaf extract of *J. tanjorensis* revealed the absence of saponins and Phlobatanin as shown in Table 4.

3.3 Quantitative Phytochemical Screening of Methanolic and Aqueous Leaf Extracts of *Jatropha tanjorensis*

The Quantitative phytochemical screening of the crude extracts of *J. tanjorensis* leaf revealed that Steroid (91.66 ± 0.29 mg/100g) was the most abundant, followed by alkaloids (50.75 mg/100g), phenol (29.55 mg/100g), terpenoids (47.45 mg/100g), and tannins (21.49 mg/100g), reducing sugars (20.39 mg/100g), flavonoids (85.29 mg/100g) respectively in the methanolic leaf extract. The quantitative phytochemical analysis of hot aqueous leaf extract of *J. tanjorensis* showed that flavonoid (98.55 mg/100g) was the most abundant, followed by phenol (69.09 mg/100g), alkaloids (59.95 mg/100g), tannins (50.26 mg/100g), saponin (31.54 mg/100g), reducing sugar (25.91 mg/100g) respectively (Fig. 1).

3.4 Gas Chromatography-Mass Spectrometry (GC-MS) Analysis

The GC-MS analysis of chemical composition of *Jatropha tanjorensis* leaf extract indicated a total of 57 compounds were identified in the leaf extract of *Jatropha tanjorensis* accounting for 100% of the total components in the extract and the main constituents identified were 1, 2, 3-Benzenetriol (66.38%), 1, 3, 5-Benzenetriol (8.82%), Catechol (6.84%), n-Hexadecanoic acid (2.08%), and 9-Octadecadienoic acid E (2.00%) as represented in Table 5.

Table 1. The antibacterial activities of methanolic extract of *Jatropha tanjorensis* leaves against test organisms

| Assay Organism | 500mg/ml | 250mg/ml | 125mg/ml | SOLVENT |
|--|-------------------------|----------|----------|---------|
| | Zone of Inhibition (mm) | | | |
| <i>Staphylococcus aureus</i> ATCC 25923 | N. I | N. I | N. I | N. I |
| <i>Bacillus subtilis</i> | 13.17±0.28 | 0.00 | 0.00 | 0.00 |
| <i>Escherichia coli</i> NCTC 10418 | N. I | N. I | N. I | N. I |
| <i>Pseudomonas aeruginosa</i> ATCC 27853 | N. I | N. I | N. I | N. I |
| <i>Salmonella typhi</i> ATCC 13311 | N. I | N. I | N. I | N. I |
| <i>Staphylococcus aureus</i> | N. I | N. I | N. I | N. I |
| <i>Enterococcus faecalis</i> FELAO97 | N. I | N. I | N. I | N. I |
| <i>Bacillus subtilis</i> ATCC 6633 | N. I | N. I | N. I | N. I |

Key: N.I = No Inhibition

Table 2. The antibacterial activities of cold-water extract of *Jatropha tanjorensis* leaves against test organisms

| Assay Organism | 500mg/ml | 250mg/ml | 125mg/ml | SOLVENT |
|--|-------------------------|----------|----------|---------|
| | Zone of inhibition (mm) | | | |
| <i>Staphylococcus aureus</i> ATCC 25923 | N. I | N. I | N. I | N. I |
| <i>Bacillus subtilis</i> ATCC 6633 | N. I | N. I | N. I | N. I |
| <i>Escherichia coli</i> NCTC 10418 | N. I | N. I | N. I | N. I |
| <i>Pseudomonas aeruginosa</i> ATCC 27853 | N. I | N. I | N. I | N. I |
| <i>Salmonella typhi</i> ATCC 13311 | N. I | N. I | N. I | N. I |
| <i>Staphylococcus aureus</i> | 19.83±0.76 | N. I | N. I | N. I |
| <i>Enterococcus faecalis</i> FELAO97 | 14.17±0.29 | N. I | N. I | N. I |
| <i>Bacillus subtilis</i> | 17.67±0.56 | N. I | N. I | N. I |

Key: N.I = No Inhibition

Table 3. The antibacterial activities of hot water extract of *Jatropha tanjorensis* leaves against test organisms

| Assay Organism | Zone of inhibition (mm) | | | SOLVENT |
|--|-------------------------|----------|----------|---------|
| | 500mg/ml | 250mg/ml | 125mg/ml | |
| <i>Staphylococcus aureus</i> ATCC 25923 | N. I | N. I | N. I | N. I |
| <i>Bacillus subtilis</i> ATCC 6633 | N. I | N. I | N. I | N. I |
| <i>Escherichia coli</i> NCTC 10418 | N. I | N. I | N. I | N. I |
| <i>Pseudomonas aeruginosa</i> ATCC 27853 | N. I | N. I | N. I | N. I |
| <i>Salmonella typhi</i> ATCC 13311 | N. I | N. I | N. I | N. I |
| <i>Staphylococcus aureus</i> | N. I | N. I | N. I | N. I |
| <i>Enterococcus faecalis</i> FELA 097 | N. I | N. I | N. I | N. I |
| <i>Bacillus subtilis</i> | N. I | N. I | N. I | N. I |

Key: N.I = No Inhibition

Table 4. The qualitative phytochemical screening of the crude extracts of leaf *J. tanjorensis*

| <i>Jatropha tanjorensis</i> | Phenol | Alkaloid | Flavonoid | Tannin | Saponin | Reducing Sugar | Terpernoid | Steroid | Phlobatanin |
|-----------------------------|--------|----------|-----------|--------|---------|----------------|------------|---------|-------------|
| Methanolic extract | + | + | + | + | - | + | + | + | - |
| Hot water extract | + | + | + | + | + | + | - | - | - |
| Cold water extract | + | + | + | + | + | + | - | - | - |

Key: (+) = Present, (-) = Not detected

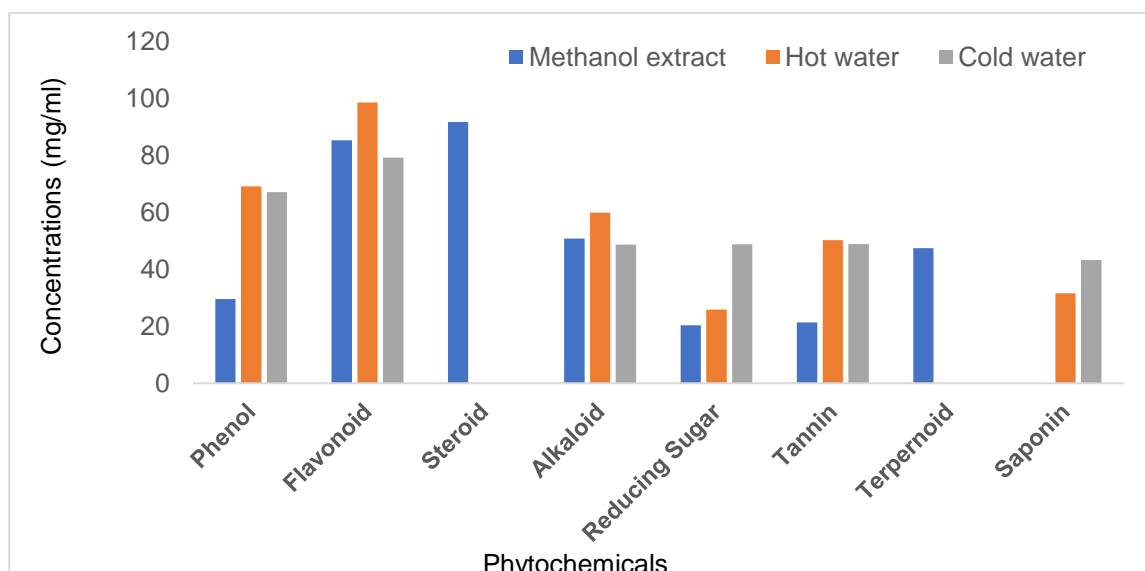


Fig. 1. The quantitative phytochemical screening of the methanolic and aqueous leaf extract of *J. tanjorensis*

Table 5. The Gas Chromatography-Mass Spectrometry (GC-MS) analysis showing the chemical composition of *J. tanjorensis*

| S/N | Compound | Retention Time (Min) | Percentage (%) |
|-----|---|----------------------|----------------|
| 1 | Cyclotrisiloxane, hexamethyl- | 3.370 | 0.26 |
| 2 | Oxime-, methoxy-phen+yl-_ | 4.450 | 0.32 |
| 3 | Cyclotetrasiloxane, octamethyl- | 5.460 | 0.10 |
| 4 | Phenol | 5.611 | 0.17 |
| 5 | Ether, methyl 1-octadecenyl | 6.182 | 0.05 |
| 6 | Phenol, 2-methoxy- | 6.777 | 0.18 |
| 7 | Ethyl 4-hydroxymandelate, 2TMS derivative | 6.985 | 0.10 |
| 8 | Cyclopentasiloxane, decamethyl- | 7.447 | 0.05 |
| 9 | Cyclododecane | 7.915 | 0.28 |
| 10 | N-Methylsalicylamide | 8.082 | 0.12 |
| 11 | 1H-benzimidazole, 2-[2-(2-thienyl) ethenyl]- | 8.839 | 1.15 |
| 12 | 1,2-Benzenediol, 3-methoxy- | 8.926 | 0.33 |
| 13 | Catechol | 9.151 | 6.84 |
| 14 | 1,2-Benzenediol, 4-methyl- | 9.457 | 0.54 |
| 15 | Resorcinol, 2TMS derivative | 9.855 | 0.08 |
| 16 | 5-Tridecene, (E)- | 10.225 | 0.29 |
| 17 | 2,4-Di-tert-butylphenol | 11.571 | 0.35 |
| 18 | 1,2,3-Benzenetriol | 12.108 | 66.38 |
| 19 | 1-Octadecene | 12.281 | 0.96 |
| 20 | Pyrazole-5-carboxylic acid, 3-methyl- | 12.512 | 0.75 |
| 21 | 5-Octadecene, (E)- | 14.135 | 0.61 |
| 22 | 1,3,5-Benzenetriol | 14.776 | 8.82 |
| 23 | 9-Heptadecanone | 14.868 | 0.08 |
| 24 | Hexadecanoic acid, methyl ester | 15.290 | 0.28 |
| 25 | n-Hexadecanoic acid | 15.660 | 2.08 |
| 26 | Trifluoroacetic acid, pentadecyl ester | 15.821 | 0.66 |
| 27 | Benzoic acid, 3,4,5-trihydroxy-, methyl ester | 15.931 | 1.02 |
| 28 | Benzoic acid, 4-fluoro-3-methoxy-, methyl Ester | 16.243 | 0.46 |
| 29 | 1,1'-Biphenyl, 2,3'-dimethyl- | 16.405 | 0.25 |
| 30 | Uracil, 5-allyl-6-methyl-2-thio- | 16.549 | 0.08 |

| S/N | Compound | Retention Time (Min) | Percentage (%) |
|-------|---|----------------------|----------------|
| 31 | 9-Octadecenoic acid, methyl ester, (E)- | 16.688 | 0.48 |
| 32 | Methyl stearate | 16.872 | 0.18 |
| 33 | 9-Octadecenoic acid, (E)- | 17.040 | 2.00 |
| 34 | Octadecanoic acid | 17.190 | 0.49 |
| 35 | Cyclopentadecane | 17.363 | 0.46 |
| 36 | 2-Chloro-5-methoxybenzimidazole | 17.635 | 0.20 |
| 37 | Benz[d]isoxazole-5-ol-4-one,4,5,6,7-tetrahydro-3-methyl- | 17.843 | 0.27 |
| 38 | 1,1'-biphenyl, 2,6-dimethyl- | 18.120 | 0.11 |
| 39 | 2,2'-Dimethylbiphenyl | 18.334 | 0.06 |
| 40 | 9-Octadecenamide, (Z)- | 18.651 | 0.27 |
| 41 | Nonacos-1-ene | 18.778 | 0.16 |
| 42 | Benzene, 1-methyl-2-(phenylmethyl) | 19.685 | 0.13 |
| 43 | Bis(2-ethylhexyl) phthalate | 19.847 | 0.15 |
| 44 | 1-Docosene | 20.095 | 0.07 |
| 45 | 2-Dimethylamino-6,7-dihydro-4H-oxazolo[3,2-a]-1,3,5-triazin-4-one | 20.742 | 0.05 |
| 46 | Thiazolo[3,2- <i>a</i>]pyridinium, 2,3-dihydro-8-hydroxy-5-methyl-, hydroxide, inner salt | 21.729 | 0.06 |
| 47 | 2-Octenal, 2-butyl- | 21.851 | 0.11 |
| 48 | Eicosane | 22.093 | 0.09 |
| 49 | 1-Ethyl-2-hydroxymethylimidazole | 22.873 | 0.21 |
| 50 | cis-9-Tetradecenoic acid, propyl ester | 23.081 | 0.14 |
| 51 | Hexahydropyridine, 1-methyl-4-[4,5-dihydroxyphenyl]- | 23.179 | 0.10 |
| 52 | Vitamin E | 23.364 | 0.18 |
| 53 | 2,2-Dimethylpropanoic acid, 2,6-dimethylnon-1-en-3-yn-5-yl ester | 24.074 | 0.06 |
| 54 | Trimethyl-(2-(phenylthio)methoxyethyl) silane | 24.305 | 0.05 |
| 55 | Cholesta-22,24-dien-5-ol, 4,4-dimethyl- | 24.634 | 0.11 |
| 56 | . beta. -Sitosterol | 24.767 | 0.14 |
| 57 | [1,2,4] Triazolo [1,5- <i>a</i>]pyrimidine-6-carboxylic acid, 4,7- dihydro-7-imino-, ethyl ester | 25.495 | 0.06 |
| Total | | | 100.03 |

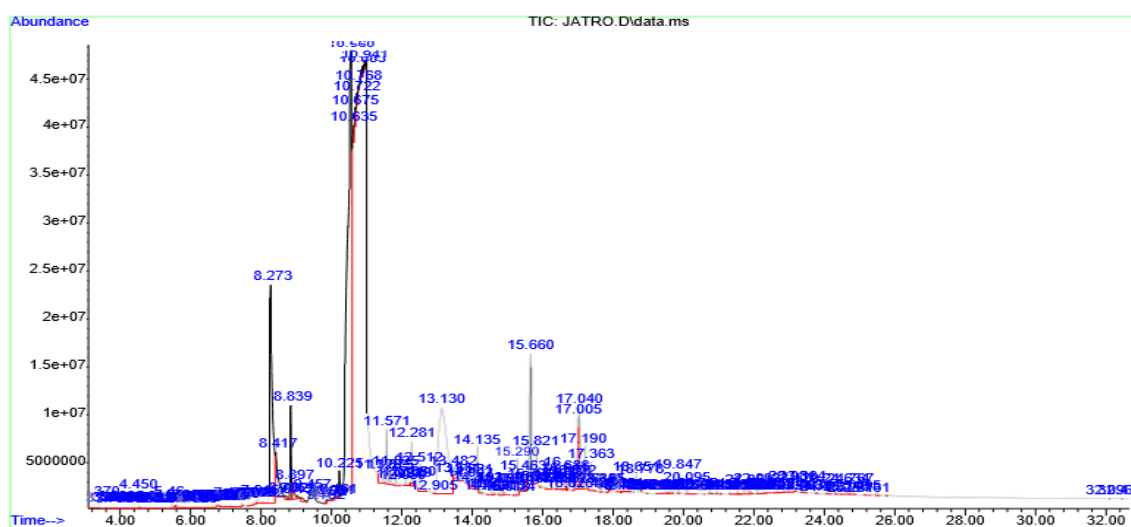


Fig. 2. The chromatogram of the GC-MS analyses of the methanolic extract of *Jatropha tanjorensis* leaves

Table 6. The antibiotic susceptibility of ciprofloxacin standard on test bacteria

| Assay organism | 20µg/ml | 10µg/ml | 5 µg/ml | 2.5 µg/ml |
|--|------------------------|------------|------------|------------|
| | Zone of Inhibition(mm) | | | |
| <i>Staphylococcus aureus</i> ATCC 25923 | 28.83±0.29 | 22.33±0.58 | 0.00 | 0.00 |
| <i>Bacillus subtilis</i> ATCC 6633 | 26.33±0.29 | 23.17±0.29 | 19.33±0.29 | 17.33±0.29 |
| <i>Escherichia coli</i> NCTC 10418 | >45 | >45 | >45 | >45 |
| <i>Pseudomonas aeruginosa</i> ATCC 27853 | 22.17±0.29 | 18.83±0.29 | 13.50±0.50 | 0.00 |
| <i>Salmonella typhi</i> ATCC 13311 | 30.33±0.58 | 26.83±0.29 | 21.83±0.29 | 17.83±0.29 |
| <i>Staphylococcus aureus</i> | 29.33±0.58 | 26.33±0.58 | 18.67±0.58 | 0.00 |
| <i>Enterococcus faecalis</i> FELA 097 | 39.33±0.58 | 35.67±0.58 | 30.67±0.58 | 26.67±0.58 |
| <i>Bacillus subtilis</i> | 30.50±0.50 | 27.33±0.58 | 22.83±0.29 | 18.83±0.29 |

Table 7. The minimum inhibitory concentration values (mg/ml) of cold *Jatropha tanjorensis* extract on responsive organisms

| Assay organisms | Zone of Inhibition(mm) | | | | | | | | | | | | | Minimum Inhibitory Concentration Value (mg/ml) |
|---------------------------------------|------------------------|-----------|-----------|-----------|-----------|-----------|-----------|-----------|-----------|-----------|-----------|------------|------------|--|
| | 0.005mg/ml | 0.01mg/ml | 0.02mg/ml | 0.04mg/ml | 0.08mg/ml | 0.16mg/ml | 0.32mg/ml | 0.64mg/ml | 1.28mg/ml | 2.56mg/ml | 5.12mg/ml | 10.24mg/ml | 20.48mg/ml | |
| Concentration Code | A | B | C | D | E | F | G | H | I | J | K | L | M | |
| <i>Staphylococcus aureus</i> | + | + | + | + | + | + | + | + | + | + | + | + | - | 20.48 |
| <i>Bacillus subtilis</i> | + | + | + | + | + | + | + | + | + | + | + | + | - | 20.48 |
| <i>Enterococcus faecalis</i> FELA 097 | + | + | + | + | + | + | + | + | + | + | + | + | - | 20.48 |

Table 8. The minimum inhibitory concentration values (mg/ml) of methanolic *Jatropha tanjorensis* extract on responsive organisms

| Assay Organism | 0.005mg/ ml | 0.01mg/ml | 0.02mg/ml | 0.04mg/ml | 0.08mg/ml | 0.16mg/ml | 0.32mg/ml | 0.64mg/ml | 1.28mg/ml | 2.56mg/ml | 5.12mg/ml | 10.24mg/ml | 20.48mg/ml | Minimum Inhibitory Concentration Value (mg/ml) |
|--------------------------|-------------|-----------|-----------|-----------|-----------|-----------|-----------|-----------|-----------|-----------|-----------|------------|------------|--|
| Concentration Code | A | B | C | D | E | F | G | H | I | J | K | L | M | |
| <i>Bacillus subtilis</i> | + | + | + | + | + | + | + | + | + | + | + | - | - | 10.24 |

4. DISCUSSION

Recently, increasing concern about health problems has led to the production of natural antibacterial for disease control. One of the most widely used natural antibacterial agents is medicinal plants, which have historically been used by many cultures for thousands of years to control common health complications. The discovery of antimicrobial drugs based on natural plant products reached critical importance as newly discovered drugs are likely to be successful against microbes resistant to multiple drugs.

This research was carried out in order to investigate the antibacterial activities of *Jatropha tanjorensis* leaves.

The antibacterial activity of cold-water extract against *Staphylococcus aureus* was the highest, with mean zone of inhibition of 19.83mm with an MIC of 20.48 mg/ml, while the antibacterial activity of methanolic extract against *Bacillus subtilis* was low with the mean zone of inhibition of 13.17 mm with a MIC of 10.24 mg/ml.

Remarkably, the results of antibacterial activity of the leaf extract of *Jatropha tanjorensis* on the test organisms revealed that the cold-water leaf extract had the best effect, and this contrasts with previously reported studies by Oyewole and Akingbala [23,24]. This could probably be due to biodiversity, or environmental conditions as organisms have different soluble portions of the phytochemicals. Van (2008) [25,26] have reported that geographical and seasonal variations affect the phytochemical constituents of plant and this in turn affects the result of antimicrobial activity.

Staphylococcus aureus, *Enterococcus faecalis* FELAO97 and *Bacillus subtilis* responded to the cold-water leaf extract of *Jatropha tanjorensis*. Only *Bacillus subtilis* showed inhibitory effect on the methanolic leaf extract. Cold water extracts of *Jatropha tanjorensis* was more effective on the bacterial isolates. The result, however, is in disparity with an earlier study by [27] which reported that methanolic plant extracts are more active against bacteria. The aqueous extract of *Jatropha tanjorensis* leaves inhibited the growth of *Staphylococcus aureus* and this conforms to the study carried out by Oboh and Masodje [28].

In this study, the leaves of *Jatropha tanjorensis* plant were effective against only Gram-positive

bacteria and this contrasts with an earlier study by Jigna et al. [27] which reported that the plant extracts are more active against Gram-negative bacteria.

Qualitative phytochemical analyses of crude methanolic, cold and hot water extracts of the plants revealed the presence of eight bio active compounds, and this agrees with the work of Oboh and Masodje, [28]. Seven compounds namely: flavonoids, terpenoids, tannins, alkaloid, reducing sugar, steroids and phenol were detected in the methanolic extract. Earlier studies by Oyewole and Akingbala [24] have reported the presence of flavonoids, terpenoids, and cardiac glycosides. Five compounds namely, saponins, flavonoids, tannins, alkaloid, reducing sugar and phenol and steroids were detected in both hot and cold-water extracts. Alkaloids, tannin, flavonoid, phenol and reducing sugars were found in all extract types. Saponins were found exclusively in both cold and hot water extracts. Terpenoids and steroids were found exclusively in the methanolic extract. This difference in phytochemical constituents of extracts from the same plant could be due to the solvent of extraction [29,30].

The presence of these secondary metabolites in the extracts of this plant part (leaf) could probably be responsible for its ethnomedical importance. Plants rich in alkaloids have been reported to possess antimalarial, analgesic and/or stimulant and antidiabetic effects, those with saponins, are useful in the treatment of hypercholesterolemia [31]. While plants rich in tannins, are useful in combating diarrhoea, headache, poor appetite, haemorrhoids, bactericides [32]. Phenol, when present in a plant, helps the plant to act as an oral analgesic/anaesthetic and to temporarily treat pharyngitis and prevention of UV-induced skin damage [33]. Flavonoids components may confer on the plant an anti-allergic, anti-inflammatory, anti-oxidant, anti-microbial, anti-bacterial, anti-fungal, anti-viral, anti-cancer, anti-diarrhoeal activity and anti-anaemic potential [34].

The Gas Chromatography and Mass Spectrometry (GC-MS) analysis using the methanolic extract of the leaves for the identification of the chemical components of *Jatropha tanjorensis* leaf extract showed a total of 57 compounds which accounts for the 100 % of the total components in the extract and the main constituents identified were 1, 2, 3-

Benzenetriol (66.38 %), 1, 3, 5-Benzenetriol (8.82 %), Catechol (6.84 %), n-Hexadecanoic acid (2.08 %), and 9-Octadecadienoic acid E (2.00 %).

The result of the GC-MS analysis showed that the leaves of *Jatropha tanjorensis* grown in Nigeria have various medicinally active compounds which justify the claims of its use traditionally for the treatment of several bacterial ailments. From the results of this study, it can be inferred that *Jatropha tanjorensis* may be an excellent source for the development of novel antibiotics. However, further studies will need to be carried out extensively to exploit the potential of this plant and also for synergistic studies.

5. CONCLUSION

The results of this study on *Jatropha tanjorensis* have led to the following conclusions:

The extracts of *Jatropha tanjorensis* leaves possessed antimicrobial activity against *Staphylococcus aureus*, *Bacillus subtilis* and *Enterococcus faecalis*. *Jatropha tanjorensis* has low antimicrobial activity on the test pathogens as compared to the Ciprofloxacin standard.

The Minimum Inhibitory Concentration (MIC) of *Jatropha tanjorensis* reveals that a higher dose of the plant extract is required to bring about a significant activity in the treatment of infection/ailment.

Eight active ingredients were identified in the plant leaves which include flavonoids, terpenoids, tannins, alkaloid, reducing sugar, saponins, steroids and phenol.

It is concluded that *Jatropha tanjorensis* should be extensively studied in future research designed to produce lead compounds and biologically active molecule to be incorporated in the arsenal of new antimicrobial drugs.

DISCLAIMER (ARTIFICIAL INTELLIGENCE)

Authors hereby declare that NO generative AI technologies such as Large Language Models (ChatGPT, COPILOT, etc) and text-to-image generators have been used during writing or editing of manuscripts.

ACKNOWLEDGEMENTS

The authors appreciate the technical assistance provided by the staff of the Microbiology unit of the Lagos University Teaching Hospital (LUTH) and Department of Biological Sciences, Bells University of Technology, Ota, Nigeria.

COMPETING INTERESTS

Authors have declared that no competing interests exist.

REFERENCES

1. World Health Organization. Antimicrobial resistance [Fact Sheet]; 2023. Available: <https://www.who.int/news-room/fact-sheets/detail/antimicrobial-resistance>
2. Prestinaci F, Pezzotti P, Pantosti A. Antimicrobial resistance: A global multifaceted phenomenon. *Pathogens and global health*. 2015;109(7):309–318.
3. Falodun, Abiodun, Udu-Cosi, Anthony, Erharuyi, Osayemwenre, Imieje, Vincent, Ehizogie, Falodun, Okhwarobo, Agbonlahor, Hamann, Mark. *Jatropha tanjorensis* – Review of phytochemistry, pharmacology and pharmacotherapy. *Journal of Pharmaceutical and Allied Sciences*. 2013; 10:1955-1964.
4. Abdallah EM, Alhatlani BY, de Paula Menezes R, Martins CHG. Back to nature: Medicinal plants as promising sources for antibacterial drugs in the post-antibiotic era. *Plants*. 2023;12 (17):3077.
5. Vaou N, Stavropoulou E, Voidarou C, Tsigalou C, Bezirtzoglou E. Towards advances in medicinal plant antimicrobial activity: A Review Study on Challenges and Future Perspectives. *Microorganisms*. 2021;9(10):2041.
6. Osabor V, Okonkwo Chinwe, Ikeuba, Alexander. Chemical profile of leaves and seeds of *Pentaclethra macrophylla* Benth. *Research Journal of Medicinal Plant*. 2017; 5:11-17.
7. Anand U, Jacobo-Herrera N, Altemimi A, Lakhssassi N. A comprehensive review on medicinal plants as antimicrobial therapeutics: Potential avenues of biocompatible drug discovery. *Metabolites*. 2019;9(11):258.
8. Oyewole OI, Oladipupo OT, Atoyebi BV. Assessment of renal and hepatic functions in rats administered methanolic leaf extract

- of *Jatropha tanjorensis*. *Annals of Biological Research*. 2012;3(2):837-841.
9. Kumar Arun, Bhardwaj Anu, Guleria Ruchika. A comparative study of antibacterial activity of leaves and latex of *Jatropha curcas* L. *International Journal of Pharmacognosy and Phytochemical Research*. 2012; 4(4):190-194.
 10. Anwar F. A food plant with multiple medicinal uses. *Journal of Food Sciences and Nutrition*. 2007; 21:17-25.
 11. Iwalewa EO, Adewunmi CO, Omisore NO, Adebajji OA, Azike CK. Pro- and antioxidant effects and cytoprotective potentials of nine edible vegetables in Southwest Nigeria. *Journal of Medicinal Foods*. 2005;8(4):539-544.
 12. Ilodu EM, Enwa FO. Commonly used medicinal plants in the management of sickle cell anaemia and diabetes mellitus by the local people of Edo State, Nigeria. *International Journal of Pharmaceutical, Biological and Chemical Sciences*. 2013; 2(2):14-16
 13. Omoregie ES, Sisodia BS. *In vitro* antiplasmodial activity and cytotoxicity of leaf extracts from *J. tanjorensis*. *Pharmacology Online*. 2011; 2:656- 673.
 14. Omoregie ES, Osagie AU. Antioxidant properties of methanolic extracts of some nigerian plants on nutritionally stressed rats. *Nigerian Journal of Basic and Applied Science*. 2012;20(1):7-20
 15. Olayiwola G, Iwalewa EO, Omobuwajo OR, Adeni yi AA and verspohi EJ. The antidiabetic potentials of *Jatropha tanjorensis* leaves. *Nig. J. Mat. Production Med*. 2004; 8:55-58
 16. Viswanathan MB, Jeya Ananthi J. Antimicrobial and antiinflammatory activities of various extracts of the leaves of *Jatropha tanjorensis*. *Bioscience Biotechnology Research of Asia*. 2009;6: 297-300.
 17. Wakirwa J. Ibrahim P. Madu Shadrack. Phytochemical screening and in vitro antimicrobial analysis of the ethanol stem bark extract of *Jatropha curcas* linn. (euphorbiaceae). *International research Journal of Pharmacy*. 2013; 4:97-100. Doi:10.7897/2230-8407.04317.
 18. Clinical and Laboratory Standards Institute (CLSI). performance standards for antimicrobial susceptibility testing. 30th ed. CLSI supplement M100, Clinical and Laboratory Stanadards Institute, 950 West Valley Road, Suite 2500, Wayne, Pennsylvania 19087 USA; 2020. ISBN 978-1-68440-067-6.
 19. Denyer Stephen, Hodges NA, Gorman SP. Hugo and russell's pharmaceutical microbiology: Seventh Edition; 2007. DOI:10.1002/9780470988329.
 20. Abalaka ME, Daniyan SY, Oyeleke SB, Adeyemo SO. The antibacterial evaluation of *Moringa oleifera* leaf extract on selected bacterial pathogens. *J. Microbiol. Res*. 2012;2(2):1-4
 21. Sofowora A. Medicinal plants and traditional medicine in Africa. Ibadan. Spectrum Books Limited. 2008;250-260.
 22. Evans WC. *Pharmacognosy* 2nd Edition. London. Balliere Tindall. 1989;167-235.
 23. Gomathy G, Vijay T, Sarumathy K, Gunasekaran S, Palani S. Phytochemical screening and GC-MS analysis of *Mukia maderaspatana* (L.) leaves. *J App Pharm Sci*. 2012;2(12):104-106.
 24. Oyewole OI, Akingbala PF. Phytochemical analysis and hypolipidemic properties of *Jatropha tanjorensis* Leaf Extract. *European Journal of Medicinal Plants*. 2011;1(4):180-185.
 25. Van Vuuren SF. (Antimicrobial activity of South African medicinal plants. *Journal of Ethnopharmacology*. 2008;119(17):462-72.
 26. Ncube NS, Afolayan AJ, Okoh AI. Assessment techniques of antimicrobial properties of natural compounds of plant origin: Current methods and future trends. *African Journal of Biotechnology*. 2005; 7:1797-806.
 27. Jigna P, Nehal K, Sumitra C. Evaluation of antibacterial and phytochemical analysis of *Bauhima variegata* L. Bark. *African Journal of Biomedical Research*. 2006;9: 53-56.
 28. Oboh Fred, Masodje HI. Nutritional and antimicrobial properties of *Jatropha tanjorensis* leaves. *American-Eurasian Journal of Scientific Research*. 2009; 4:7-10.
 29. Arun KP, Brindha P. Studies on Antioxidant and antiarthritic potentials of *Jatropha tanjorensis* Ellis and Saroja, *International Journal of Pharmacy and Pharmaceutical Sciences*. 2012;4(2):136-138.
 30. Anhwange Benjamin, Agbidye I, Ikyenge Barnaabas. Phytochemical screening, antimicrobial activities and nutritional content of *Jatropha tanjorensis* leaves. *Nigerian Annals of Pure and Applied Sciences*. 2019; 1:109.

- DOI: 10.46912/napas.114.
31. Uzor PF. Alkaloids from plants with antimalarial activity: A review of recent studies. Evidence-based complementary and alternative medicine\; eCAM, 2020: 8749083.
 32. Sharma Kartik, Kumar Vikas, Kaur, Jaspreet, Tanwar Beenu, Goyal Ankit, Sharma, Rakesh, Gat, Yogesh, Kumar Ashwani. Health effects, sources, utilization, and safety of tannins: A critical review. Toxin Reviews. 2019; 40:1-13. DOI:10.1080/15569543.2019.1662813.
 33. Daniyan SY, Ukubuiwe CC, Ukubuiwe AC, Oluwafemi OJ, Chukwudi PO. Antibacterial activities of leaf extracts of *Jatropha tanjorensis* Ellis and *Saroja* (Euphorbiaceae), Medicinal Plant Research. 2018;8(4):21-26
 34. Fitmawati F, Resida E, Kholifah SN, Roza RM, Almurdati M, Emrizal E. Phytochemical screening and antioxidant profiling of Sumatran wild mangoes (*Mangifera spp.*): A potential source for medicine antidegenerative effects. F1000 Research. 2020; 9:220.

Disclaimer/Publisher's Note: The statements, opinions and data contained in all publications are solely those of the individual author(s) and contributor(s) and not of the publisher and/or the editor(s). This publisher and/or the editor(s) disclaim responsibility for any injury to people or property resulting from any ideas, methods, instructions or products referred to in the content.

© Copyright (2024): Author(s). The licensee is the journal publisher. This is an Open Access article distributed under the terms of the Creative Commons Attribution License (<http://creativecommons.org/licenses/by/4.0>), which permits unrestricted use, distribution, and reproduction in any medium, provided the original work is properly cited.

Peer-review history:

The peer review history for this paper can be accessed here:

<https://www.sdiarticle5.com/review-history/120540>