

Supplementary Information for

Principal role of fungi in soil carbon stabilization during early pedogenesis in the high Arctic

Juan Carlos Trejos-Espeleta *et al.*

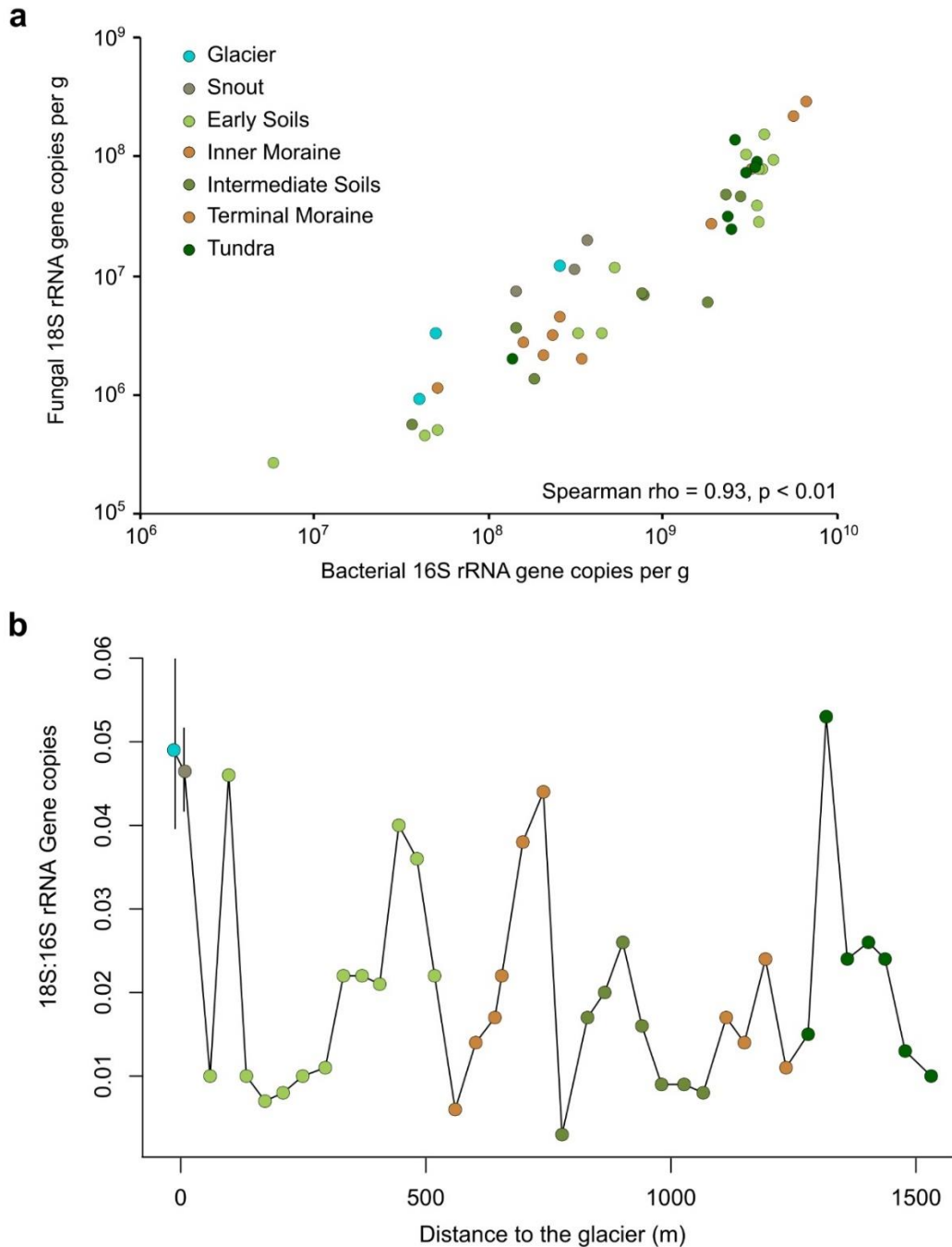


Figure S1. a. Fungal 18S rRNA gene concentrations plotted against bacterial 16S rRNA gene concentrations determined via qPCR across the entire proglacial chronosequence (Spearman Rho = 0.93, $p < 0.01$). **b.** The F:B ratios based on qPCR (F: fungal 18S rRNA gene concentrations, B: bacterial 16S rRNA gene concentrations) from the glacier through the chronosequence. Blue: glacier, grey: snout, light green: young proglacial soils: green: intermediate glacial soils, dark green: tundra soil, brown: moraines. Error bars represent standard deviations across three biological replicates for sites where biological replicates were performed. For sites where biological replicates were not taken, the data points represent averages of three qPCR technical replicates.

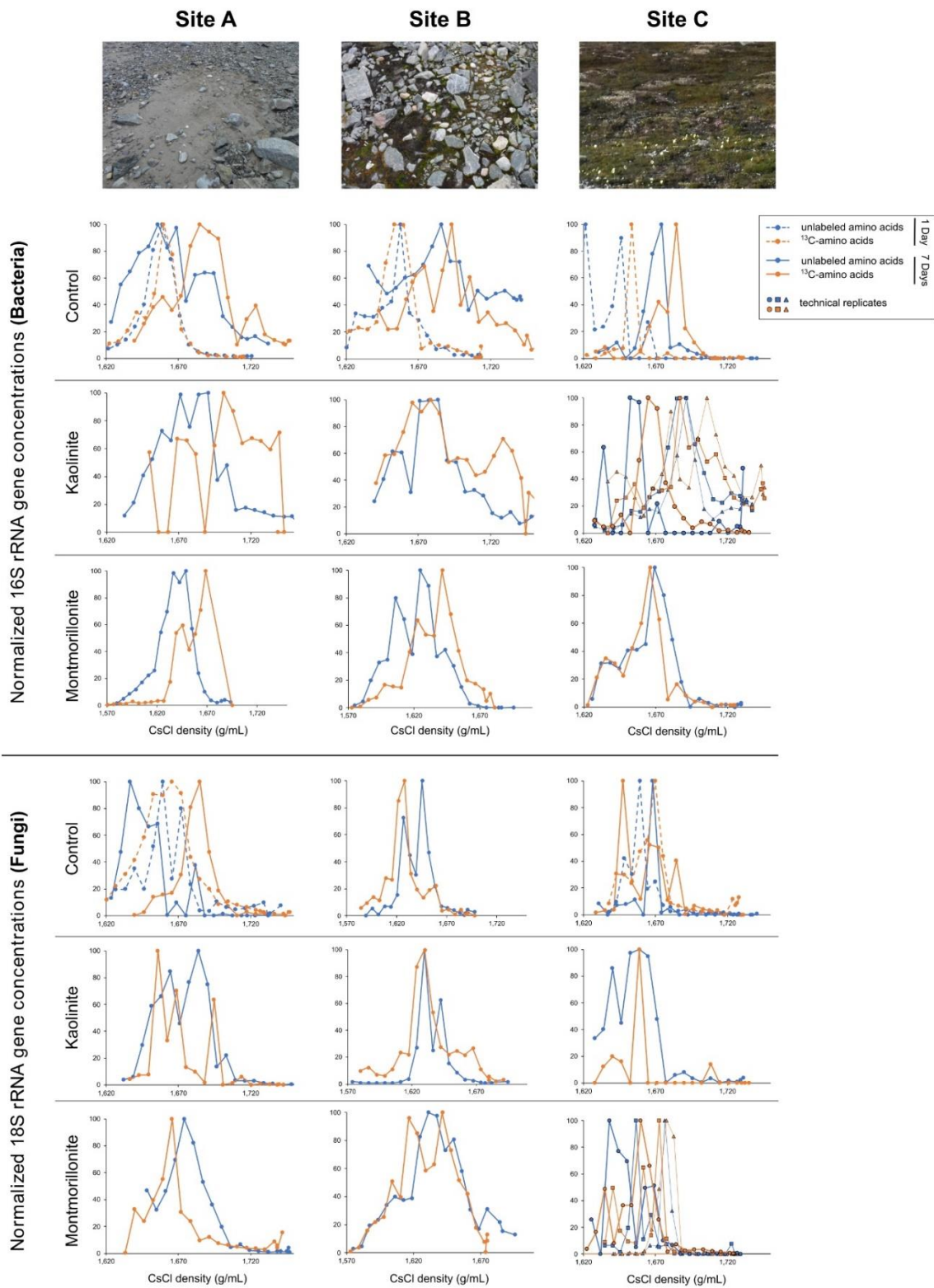


Figure S2. qPCR of 16S (upper panel) and fungal 18S rRNA genes (lower panel) across CsCl density gradients from ¹³C-labeled amino acid incubations in the different experimental treatments.