



**HAL**  
open science

# Compensatory Strategies in Individuals with Moebius Syndrome: A Case Study

Anne Hermes, Ivana Didirková, Philipp Buech, Gilles Vannuscorps

► **To cite this version:**

Anne Hermes, Ivana Didirková, Philipp Buech, Gilles Vannuscorps. Compensatory Strategies in Individuals with Moebius Syndrome: A Case Study. 13th International Seminar on Speech Production, May 2024, Autrans, France. , 2024. hal-04659810

**HAL Id: hal-04659810**

**<https://hal.science/hal-04659810v1>**

Submitted on 23 Jul 2024

**HAL** is a multi-disciplinary open access archive for the deposit and dissemination of scientific research documents, whether they are published or not. The documents may come from teaching and research institutions in France or abroad, or from public or private research centers.

L'archive ouverte pluridisciplinaire **HAL**, est destinée au dépôt et à la diffusion de documents scientifiques de niveau recherche, publiés ou non, émanant des établissements d'enseignement et de recherche français ou étrangers, des laboratoires publics ou privés.

# COMPENSATORY STRATEGIES IN INDIVIDUALS WITH MOEBIUS SYNDROME: A CASE STUDY

Anne Hermes<sup>1</sup>, Ivana Didirková<sup>2</sup>, Philipp Buech<sup>1</sup>, Gilles Vannuscorps<sup>3</sup>

<sup>1</sup>Laboratoire de Phonétique et Phonologie (CNRS & Sorbonne Nouvelle), Paris, France

<sup>2</sup>UR 1569 TransCrit, Université Paris 8 Vincennes – Saint-Denis, France

<sup>3</sup>Psychological Sciences Research Institute/IONS, Université catholique de Louvain, Belgium



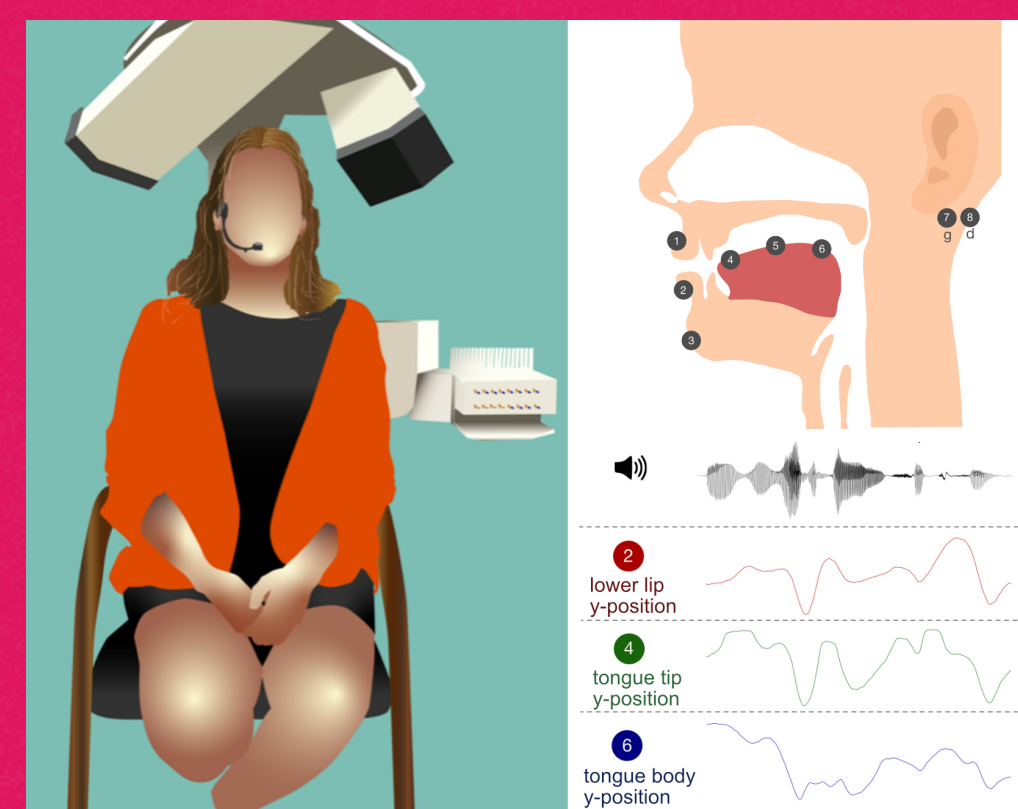
## BACKGROUND

- Rare congenital neuromuscular disorder (0.00002 to 0.002% of the world's population)
  - Absence or underdevelopment of 6<sup>th</sup>/7<sup>th</sup> cranial nerves, controlling horizontal eye movements and facial muscles (Verzijl et al. 2005)
  - Key (articulatory) features include lip paralysis and incomplete lip closure
  - Frequent misarticulations related to impaired labial function (Kahane 1979, Helmick 1980, Murdoch et al. 1997, Sjögreen et al. 2001, del Carmen Pamplona et al. 2022).
  - Around 20% appear to succeed in developing compensatory articulatory movements (Sjögreen et al. 2022)



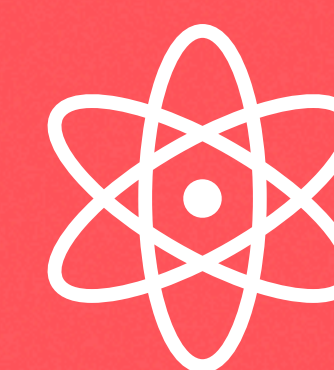
## METHOD

- Acoustic and articulatory data (EMA, AG 501)
  - Two female individuals with Moebius syndrome (S1=41 years; S2=43 years)
  - One control speaker (C=28 years)
  - Sensors (plus reference sensor)
    - Upper and lower lips
    - Tongue tip
    - Tongue body
    - Chin
- DDK tasks (production of syllable /pa/ on one breath cycle as fast and as precise as possible)
- Measures (over ten /pa/ repetitions): (1) convex hull area in mm<sup>2</sup> (range/extent of a sensor movement in horizontal and vertical dimension), (2) volume hull curve in mm<sup>3</sup> (horizontal, vertical & lateral) in (A) /papapapa/ vs. (B) /tatatata/



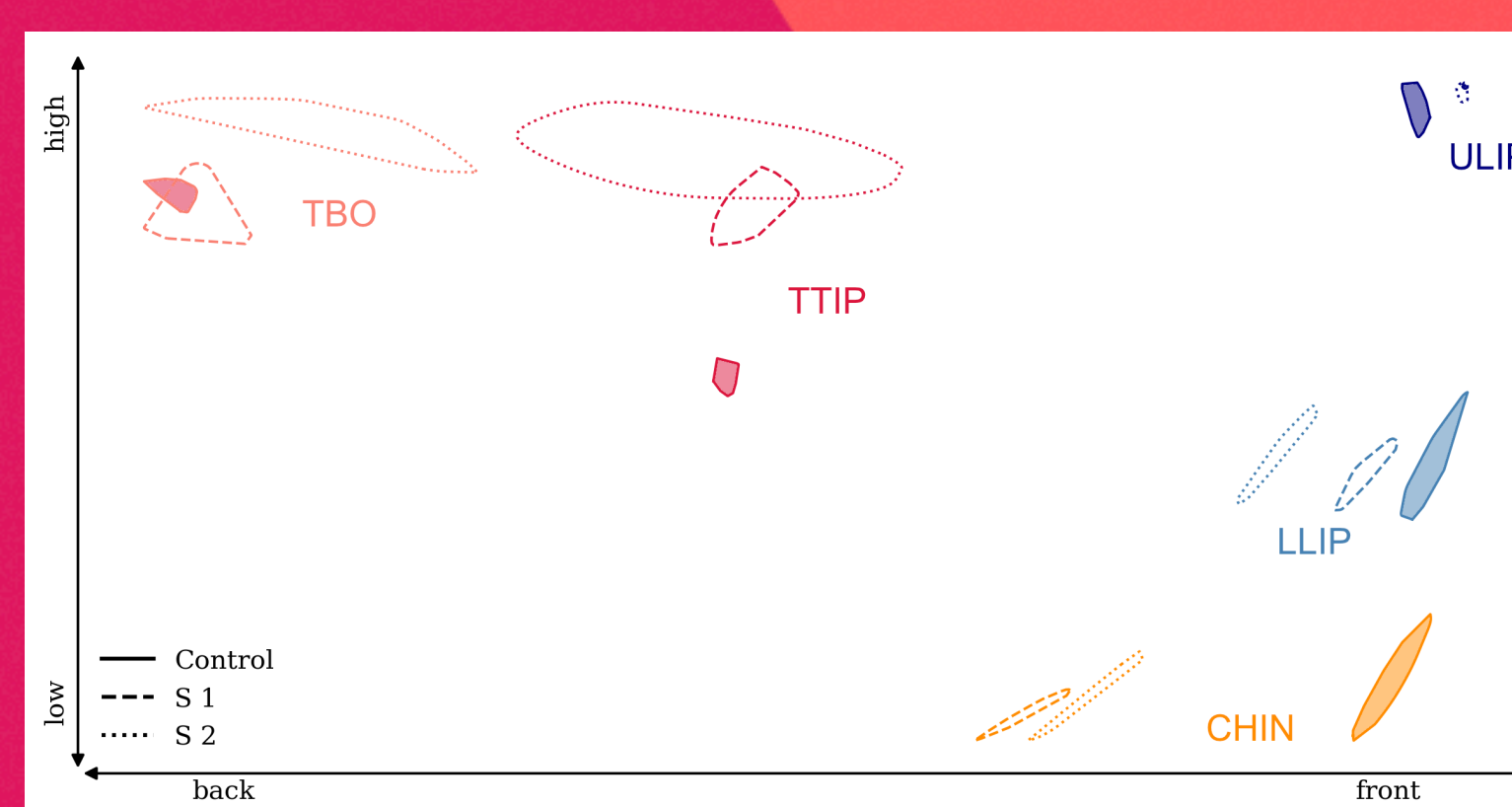
## AIM

- Fill gap by providing first (acoustic and) articulatory analysis of speech motor control mechanisms in two individuals with Moebius Syndrome, with intact speech intelligibility
- Describe compensatory articulatory strategies to inform fundamental issues in articulatory phonetics, specifically speech motor control



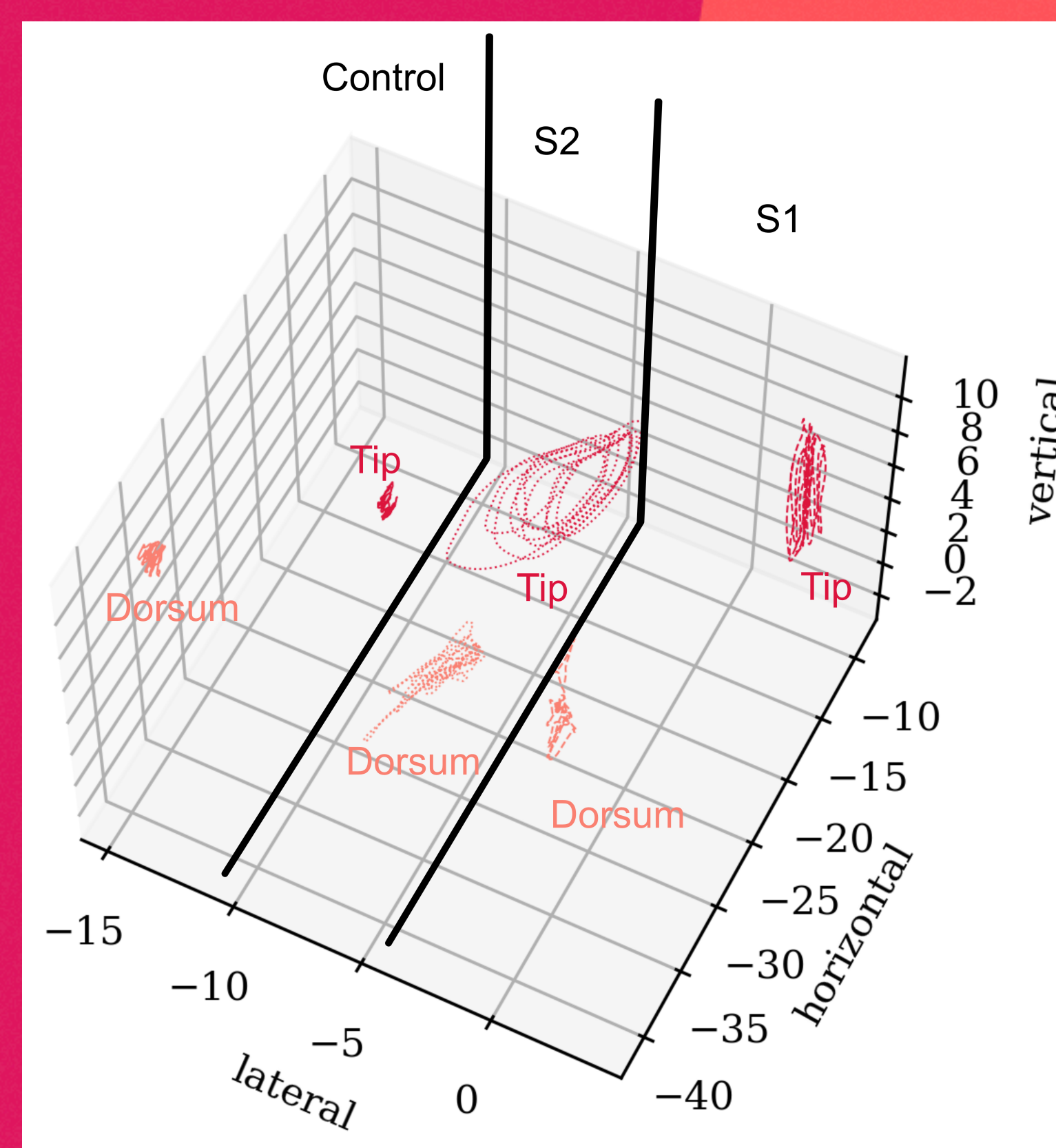
## RESULTS

### (1) CONVEX HULL IN MM<sup>2</sup>



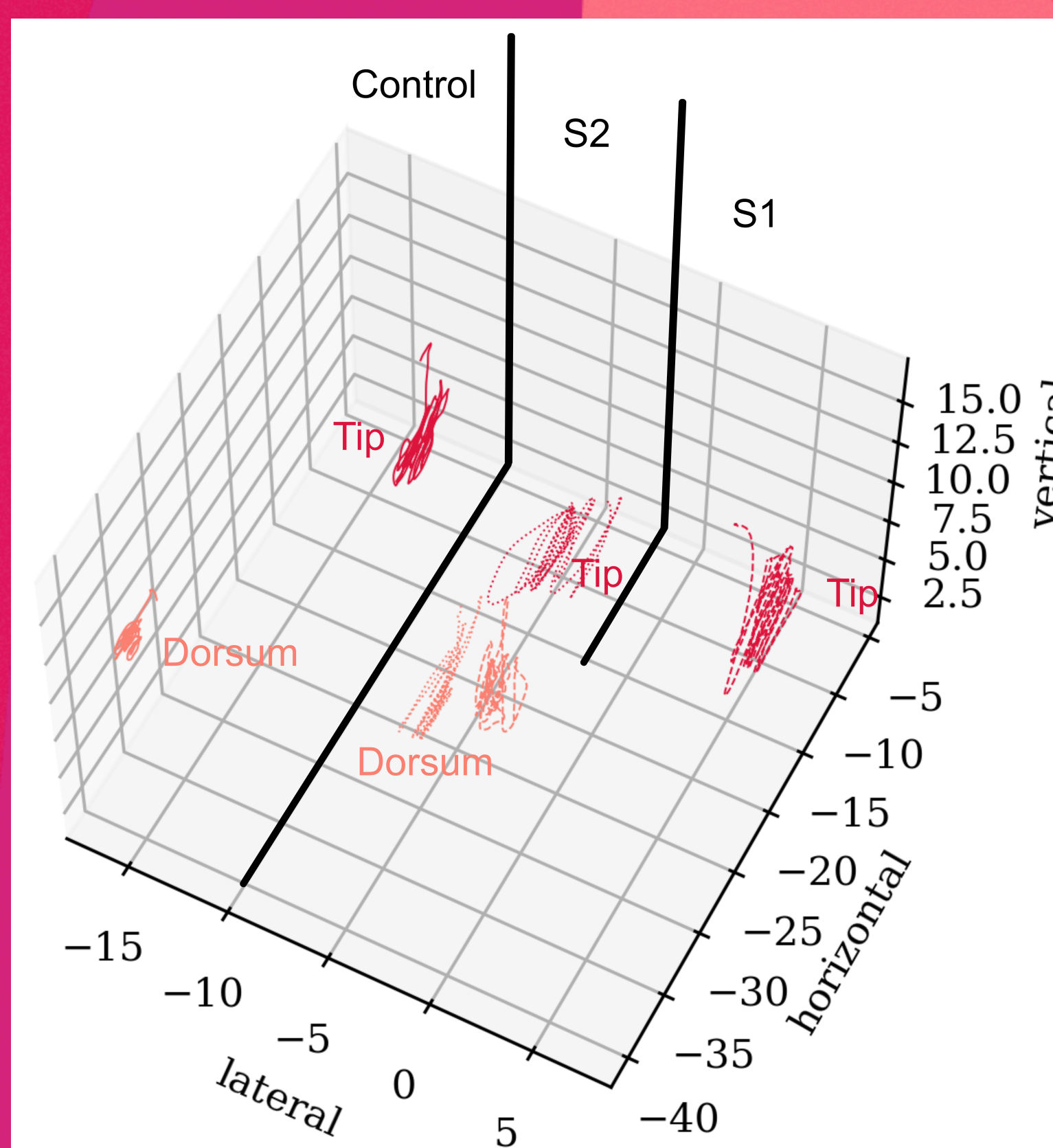
- Reduced range in lips & jaw (e.g., LLIP: S1=3.98mm<sup>2</sup>; S2=4.12mm<sup>2</sup> vs. C=7.4mm<sup>2</sup>)
- Tongue tip & body range much greater (e.g., TIP: S1=12.46mm<sup>2</sup>; S2=74.23mm<sup>2</sup> vs. C=1.97mm<sup>2</sup>)
- Tip much higher (towards palate)

### (2A) VOLUME IN MM<sup>3</sup> - /PAPAPAPA/



- Volume (3D, lateral, vertical & horizontal) reflects the massive tip movements and also tongue body during labial DDK (TIP: S1=4.79mm<sup>3</sup>, S2=55.20mm<sup>3</sup>, C=0.5mm<sup>3</sup>, TBO: S1=7.64mm<sup>3</sup>, S2=21.70, vs. C=1.23mm<sup>3</sup>)
- For LLIP almost no movement in labial DDK (LLIP, S1=1.27mm<sup>3</sup>, S2=2.02mm<sup>3</sup> vs. C=8.27mm<sup>3</sup>, ULIP: S1=0.01mm<sup>3</sup>, S2=0.12mm<sup>3</sup> vs. C=3.10mm<sup>3</sup>)

### (2B) VOLUME IN MM<sup>3</sup> - /TATATATA/



- Volume in "intended" alveolar DDK reflect different patterns than for labial DDK (TIP: S1=42.72mm<sup>3</sup>, S2=22.21mm<sup>3</sup>, vs. C=14.85mm<sup>3</sup>, TBO: S1=17.78mm<sup>3</sup>, S2=9.15 vs. C=5.18mm<sup>3</sup>)
- OBS! for LLIP: S1=1.70mm<sup>3</sup>, S2=0.67mm<sup>3</sup> vs. C=1.51mm<sup>3</sup>, ULIP: S1=0.01mm<sup>3</sup>, S2=0.02mm<sup>3</sup> vs. C=0.88mm<sup>3</sup>)



## CONCLUSION & OUTLOOK

- No closure for labial stops, but some lower lip movement
- Excessive tongue movements in all dimensions indicating compensatory strategies
- DDK is an artificial movement paradigm (Ziegler et al. 2002), however, first insights in how speech motor control is affected
- Reveal of intriguing (different) strategies adopted by these individuals to navigate speech limitations in producing labials
- Next: Acoustic analyses; "natural" sentence productions

## REFERENCES

★del Carmen Pamplona, M., Ysunza, P.A., Telich-Tarriba, J., Chávez-Serna, E., Villate-Escobar, P., Sterling, M., & Cardenas-Mejia, A. (2020). Diagnosis and treatment of speech disorders in children with Moebius syndrome. *International Journal of Pediatric Otorhinolaryngology*, 138, 110316. ★Kahane, J.C. (1979). Pathophysiological Effects of Möbius Syndrome on Speech and Hearing. *Arch Otolaryngol*, 105(1):29–34. ★Murdoch, B.E., Johnson, S.M. & Theodoros, D.G. (1997) Physiological and perceptual features of dysarthria in Moebius syndrome: directions for treatment. *Pediatric Rehabilitation*, 1:2, 83-97, DOI: 10.3109/17518429709025851. ★Sjögreen, L., Andersson-Norinder, J., & Jacobsson, C. (2001). Development of speech, feeding, eating, and facial expression in Möbius sequence. *International Journal of Pediatric Otorhinolaryngology*, 60(3), 197-204. ★Verzijl, H.T.F.M., Valk, J., de Vries, R. & Padberg, G.W. (2005). Radiologic evidence for absence of the facial nerve in Moebius syndrome. *Neurology*, 64, 849-855. ★Ziegler, W. (2002). Task-related factors in oral motor control: speech and oral diadochokinesis in dysarthria and apraxia of speech. *Brain and Language*, 80(3), 556–575.