

Figure 1. Metallurgy and man-made copper contamination at Giza from the Copper Age to the New Kingdom. Copper contamination is shown as PCA-Axis 1 scores (with a 200-year moving average and a 95% confidence interval) and compared with the intensity of human occupation on the plateau³⁵. The primary periods of contamination align closely with attested historical events. The First Intermediate Period (FIP) and Second Intermediate Period (SIP) are marked with an arrow.

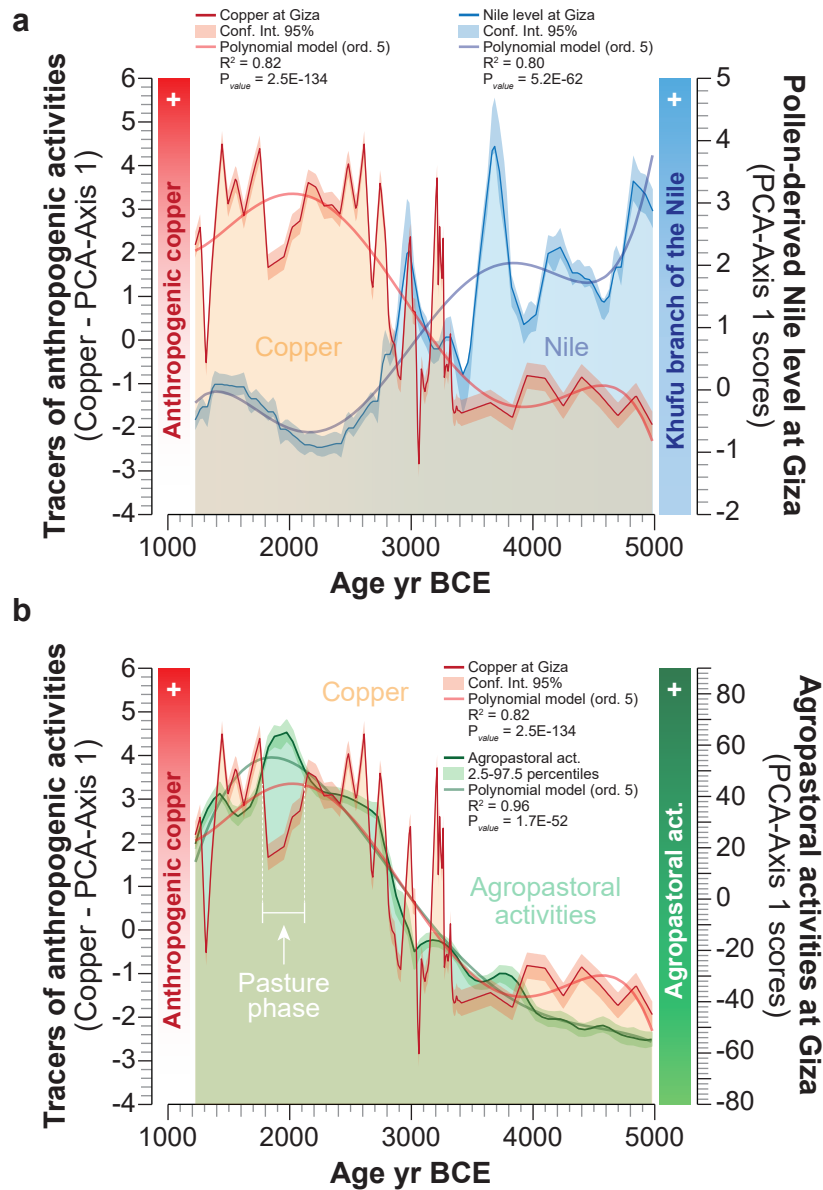


Figure 2. Copper contamination compared with the Nile level and agropastoral activities at Giza. Copper contamination, shown as PCA-Axis 1 scores, is compared with (a) the level of the Khufu branch of the Nile (Sheisha et al., 2022) and (b) the evolution of agropastoral activities on the Giza plateau (Sheisha et al., 2023). Long-term trends are highlighted by polynomial regressions.

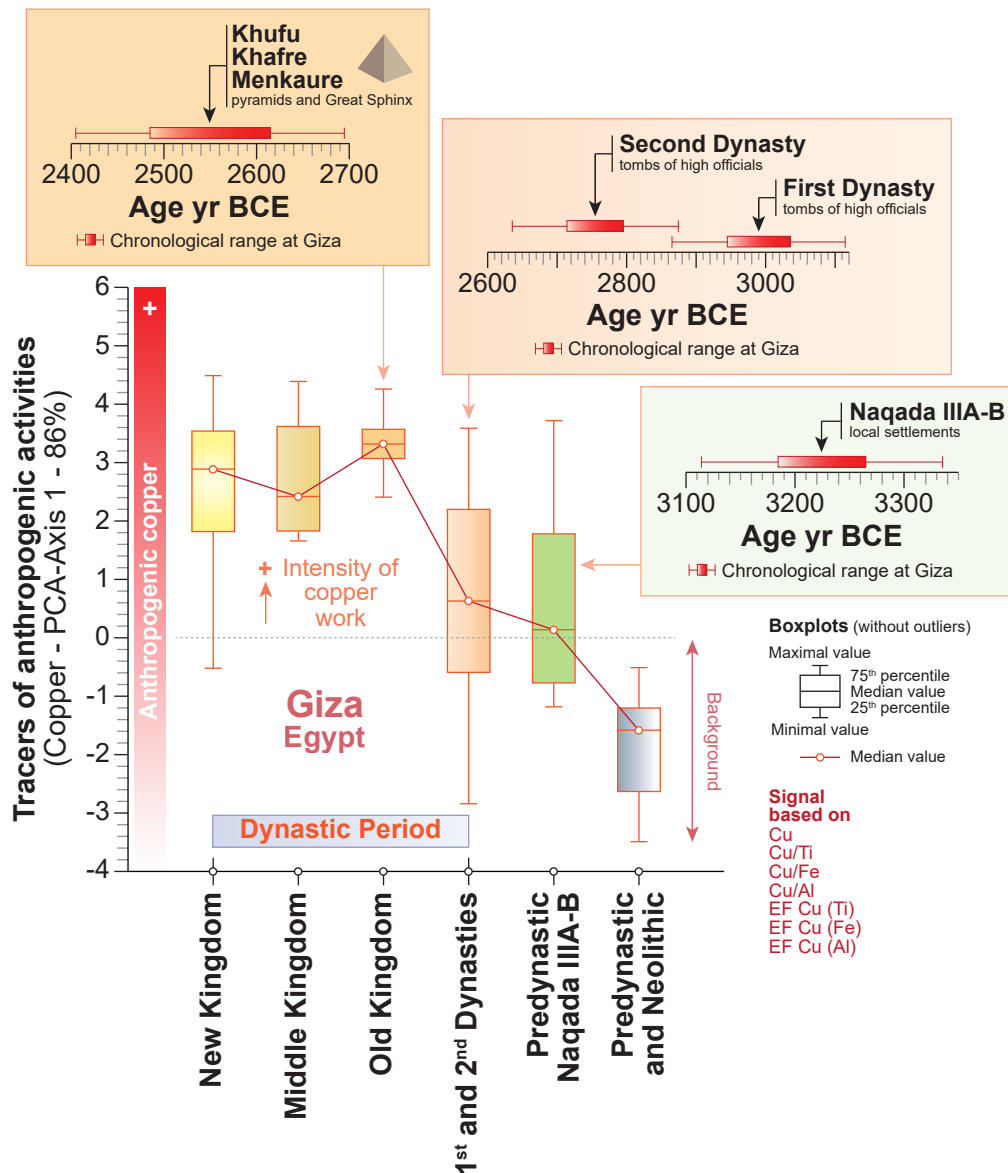


Figure 3. Evolution of copper contamination by archaeological/historical period. Boxplots showing the evolution of copper contamination from the Neolithic to the New Kingdom. The phases of increased copper contamination from the Predynastic Period to the Old Kingdom are indicated as calibrated ^{14}C dates (with the associated 2σ - 95% probability) plotted in relation to major archaeological events at Giza.