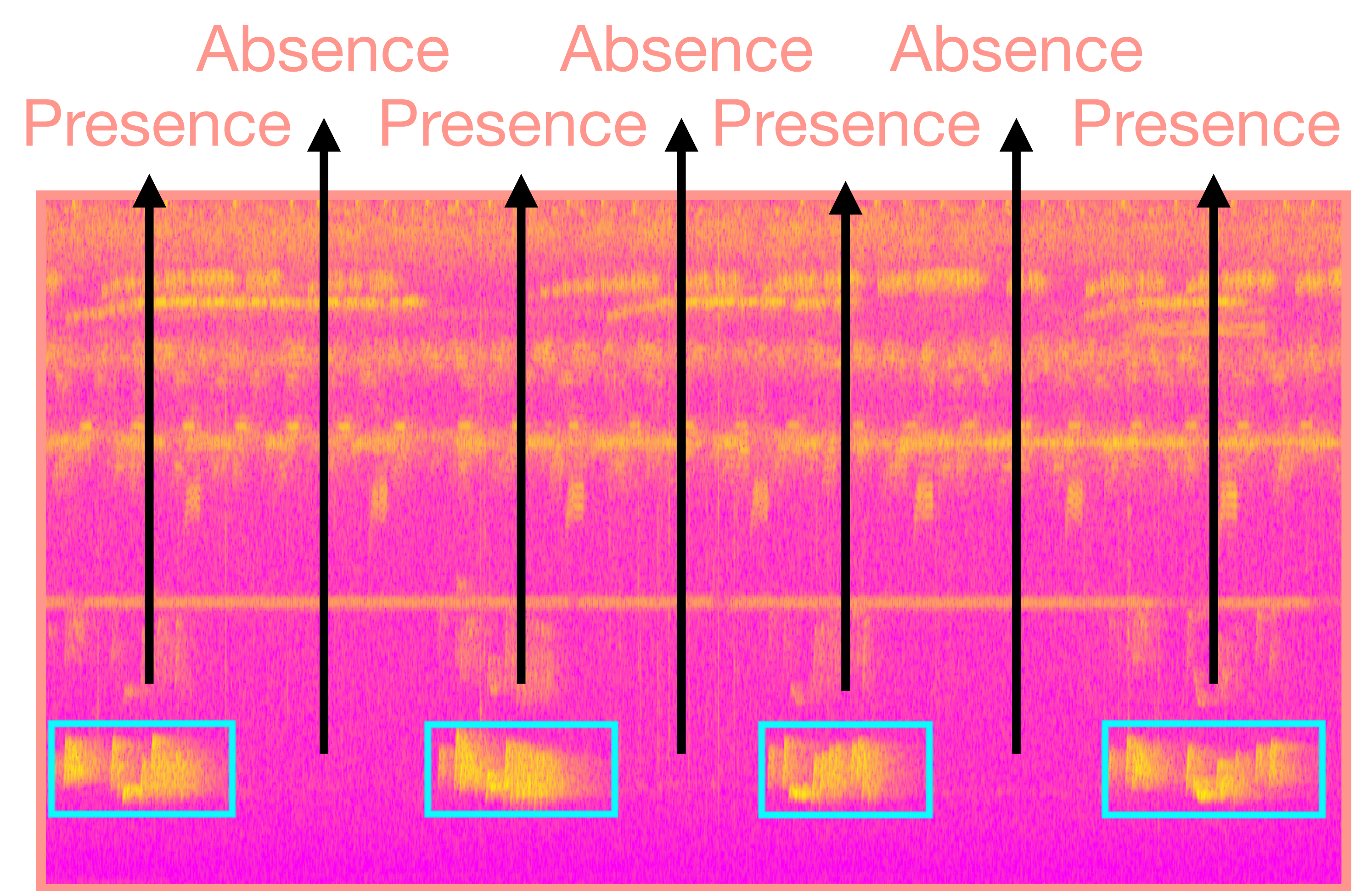


3.1

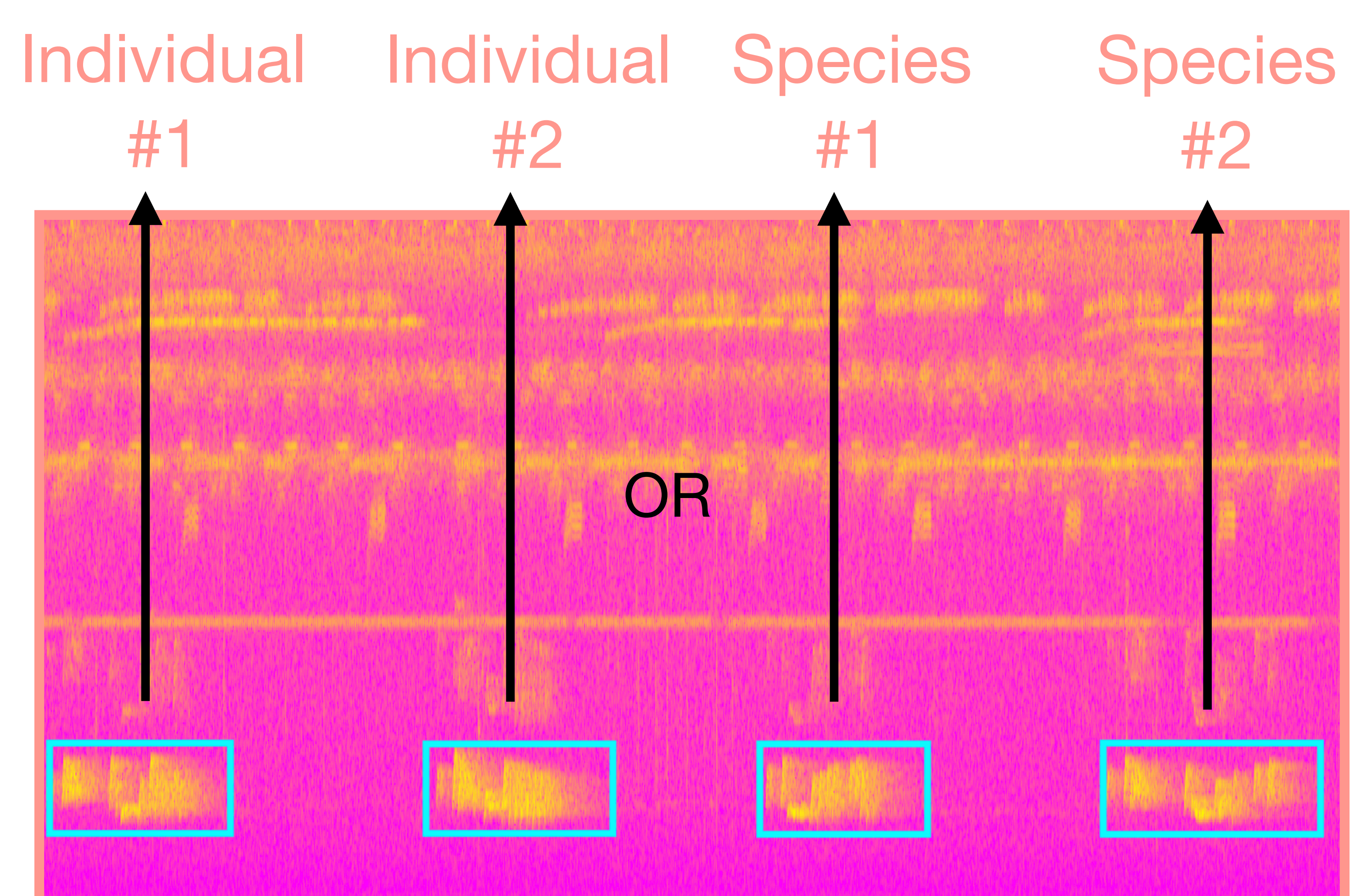
## Detection and segmentation



- Extracting vocalizations from long PAM recordings
- Analyzing vocalization frequency, localization, length, etc.
- Accelerating manual dataset collection for qualitative analysis

3.2

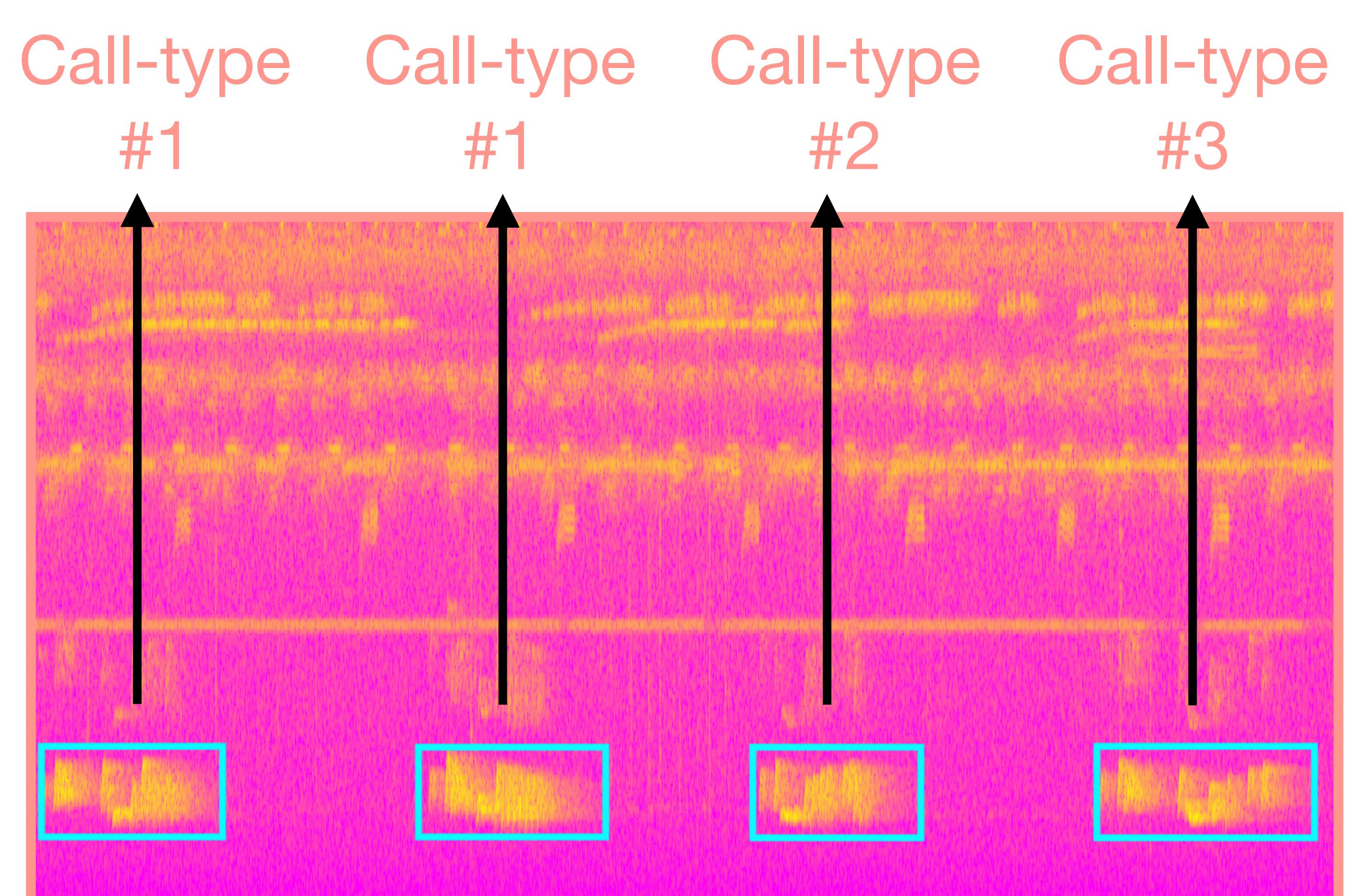
## Identification and density estimation



- Counting or recognizing individuals / species in the wild
- Analyzing inter-individual / inter-sexual / inter-species variations
- Monitoring bioacoustic diversity and environmental pressures

3.3

## Vocal repertoires and clustering



- Discovering new vocal repertoires / call-types
- Assessing the validity of pre-defined expert vocal repertoires
- Analyzing discreteness / continuity of vocalization typologies