



HAL
open science

Are bio-based and biodegradable microplastics impacting for blue mussel (*Mytilus edulis*)?

Amina Khalid, Aurore Zalouk-Vergnoux, Samira Benali, Rosica Mincheva, Jean-Marie Raquez, Samuel Bertrand, Laurence Poirier

► To cite this version:

Amina Khalid, Aurore Zalouk-Vergnoux, Samira Benali, Rosica Mincheva, Jean-Marie Raquez, et al.. Are bio-based and biodegradable microplastics impacting for blue mussel (*Mytilus edulis*)?. *Marine Pollution Bulletin*, 2021, 167, pp.112295. 10.1016/j.marpolbul.2021.112295 . hal-04654607

HAL Id: hal-04654607

<https://hal.science/hal-04654607>

Submitted on 22 Jul 2024

HAL is a multi-disciplinary open access archive for the deposit and dissemination of scientific research documents, whether they are published or not. The documents may come from teaching and research institutions in France or abroad, or from public or private research centers.

L'archive ouverte pluridisciplinaire **HAL**, est destinée au dépôt et à la diffusion de documents scientifiques de niveau recherche, publiés ou non, émanant des établissements d'enseignement et de recherche français ou étrangers, des laboratoires publics ou privés.



Distributed under a Creative Commons Attribution - NonCommercial 4.0 International License

Are bio-based and biodegradable microplastics impacting for blue mussel (*Mytilus edulis*)?

Amina Khalid¹, Aurore Zalouk-Vergnoux¹, Samira Benali², Rosica Mincheva², Jean-Marie Raquez², Samuel Bertrand^{1,3}, Laurence Poirier¹

¹ Laboratoire Mer, Molécules, Santé, Université de Nantes, 2 rue de la Houssinière, BP 92208, 44322 Nantes Cedex 3, France

² Centre d'Innovation et de Recherche des Matériaux et Polymères (CIRMAP), Service des Matériaux Polymères et Composites (SMPC), Université de Mons, Place du Parc 20, B7000 Mons, Belgique

³ ThalassOMICS Metabolomics Facility, Plateforme Corsaire, Biogenouest, Nantes, France

Abstract

The substitution of petrochemical plastics by bio-based and biodegradable plastics are in need of an evaluation for the potential toxic impacts that they can have on marine wildlife. This study aims to assess the toxicological effects of polylactic acid microparticles at two concentrations, 10 and 100 µg/L, during 8 days on the blue mussel, *Mytilus edulis*. No significant oxidative stress (catalase, glutathione-S-transferase and superoxide dismutase activities), neurotoxicity (acetylcholinesterase), or immunotoxicity (lysosomal membrane stability and acid phosphatase activity) were detectable. The multivariate analysis of metabolomic data allowed us to differentiate the individuals according to the exposure. From the loading plot of OPLS-DA, 48 ions down-regulated in the individuals exposed to microplastics. They were identified based on HRMS data as glycerophospholipids.

Keywords

Polylactic acid, PLLA, biomarkers, metabolomics, laboratory exposure

Highlights

- *Mytilus edulis* were exposed to bio-based and biodegradable fragments from 0.8 to 10 µm and at 10 and 100 µg/L for 8 days
- No significant oxidative stress, neurotoxicity and immunotoxicity were reported

- Mussels exposed to microplastics were differentiated from controls, thanks to the metabolomic approach
- 48 ions were down-regulated in the mussels exposed to microplastics according to the multivariate analysis of metabolomics
- Biochemical and metabolomic approaches in ecotoxicology are complementary

Introduction

Plastic pollution is weakening the ability of the oceans to support mankind. The impressive qualities of plastic, such as its resistance, strength, durability, and affordability, make it the most demanded product in the world, as it presents incredible social benefits (Gorman, 1993; Laist, 1987). Increase in production has been seen from 1960 to 2016 upscaling from 0.5 tons/year to over 359 million tons in 2018 (Plastic Europe, 2019). Thompson (2006) stated that 10% of produced plastic ends up in the oceans. The increased use of poorly managed single-use products, unrestricted or unchecked debris disposal, and inefficient recycling practices are the main reasons for plastic accumulation in the oceans. (Barnes et al., 2009). Since these polymers are either lightweight or buoyant, a huge amount of them is easily carried long distances, while the heavyweight polymers, end up in sinking into the sediments, where they settle and persist for centuries (Moore, C. J. 2008; Barnes et al., 2009; Jeftic et al., 2009). The statistics on anthropogenic debris and the aforementioned statements make plastic ubiquitous under micro- and macro-sizes as well as different shapes like filaments, granules, fragments, foams, etc., leading to a perilous situation (Derrick, 2002). Once in the environment, depending on the conditions, plastic wastes can be fractionated due to UV radiation, hydrolysis, and/or biodegradation. The presence and identification of small floating fragments on the ocean surface was first reported in 1972 by Carpenter et al. (Carpenter and Smith, 1972; Carpenter et al., 1972). Accumulation of plastic fragments was also reported decades ago in the bodies of organisms like birds (Harper and Fowler, 1987), and in others like Zooplankton (Desforges et al., 2015), Polychaeta (Mathalon and Hill, 2014), Bivalves (Mathalon and Hill, 2014; Van Cauwenberghe and Janssen, 2014; Van Cauwenberghe et al., 2015), Crustaceans (Murray and Cowie, 2011, Devriese et al., 2015), Fish (Boerger et al., 2010; Lusher et al., 2013), and Mammalia (Rebolledo et al., 2013). The term 'microplastic' have been widely used and corresponds to plastic particles/fragments with a size less than 5 mm (Arthur et al., 2009).

In regards to microplastic studies, the most studied species in field investigations is the mussel (Phuong et al., 2016). The mode of feeding, easy availability, high tolerance threshold to salinity differences, and broad geographical distribution make mussels ideal organisms for biomonitoring studies. They are benthic, extensive filter feeder organisms with a selective mechanism of suspension feeding. Laboratory exposures with mussels have also been conducted to investigate the effects of microplastics. (Von Moos et al., 2012; Browne et al., 2008; De Witte et al., 2014; Avio et al., 2015; Li et al., 2015, 2016). Biomarkers are usually

used as warning signs of biological effects caused by the presence of contaminants (Wu et al., 2005). Utilizing various health biomarkers, studies have shown a reduction in feeding activity at a concentration of 0.1 g/L of 10 µm PS beads (Wegner et al., 2012). It has also been reported that ingestion of these beads creates physical blockages in the intestinal tract, leading to reductions in feeding stimuli and function as well as a decrease in reproductive capabilities, primarily due to delays in ovulation and the lowering of steroid hormones (Wright et al., 2013; Canesi et al., 2015). Significant histologic abnormalities due to strong inflammatory responses were also observed after exposing mussels to high-density polyethylene (HDPE) at an acute concentration of 2.5 g/L (Von Moos et al., 2012). A dose as high as 32 µg/L of PS was given to assess the toxicological effects with an increased hemocyte mortality and triggered the cellular oxidative balance (Paul-Pont et al., 2016). In most of exposure studies, the microplastics used were not environmentally representative with spherical and monodispersed sizes and very high concentrations (Phuong et al., 2016). Few recent papers started to use fragments made from milled plastic items (Rainieri et al., 2018; Weber et al., 2018; Revel et al., 2019).

Recently as an alternative to petro-sourced and non-biodegradable plastic, compostable plastics and/or biosourced plastics, have been manufactured to provide a sustainable alternative. (Auras et al., 2004; Kaseem et al., 2012; Hamad et al., 2014; Gomes et al., 2019). Among these biopolymers, poly (lactic acid) (PLA) is getting fame and increased attention for its potential to replace petroleum-based plastics, mainly for low value-added applications, including single-use packaging. It also has impressive properties of high strength, aroma barrier, excellent crease, as well as oil and grease resistance (Ishida et al., 2006). With the increasing awareness of plastic pollution, the need for biodegradable plastics, especially the compostable PLA, has increased, and these plastics are produced on a ton scale today. At the same time, prices have dropped from \$1,000 USD per kg to a few USD\$ per kg during the last 20 years, and are now at a price level similar to that of polystyrene (Schneiderman and Hillmyer, 2017). The tendency to be broken down by hydrolysis and bacteria make PLA an ideal product (Nakatsuka, 2011). However, the favorable conditions required for biodegradation, including a temperature range of 55-175° C, are difficult to achieve in the natural environment (Garlotta, 2001; Haider et al., 2019). The degradation time of PLA varies from six months to two years, depending on environment conditions. The time for degradation is still less than traditional polystyrene or polyethylene plastics, which, according to literature is reported to take anywhere from 500 to 1000 years (Sinclair, 1996).

Nevertheless, the negative impacts of microplastics in natural environments are inevitable. Indeed, without specific kinds of composting garbage disposal units, PLA wastes have to be thrown into the general waste. This is in contradiction to popular convention, as the 'green' label of these objects tends to disillude consumers into believing that they can be thrown anywhere in nature without negative effects (Haider et al., 2019). This practice emphasizes the need for clear answers about the ecotoxicological effects of PLA. Currently, few papers can provide much information about the biodegradation and ecotoxicology of PLA in soil (Palsikowski et al., 2018; Adhikari et al., 2016). As a result, the effects of PLA microplastics on marine biota remains largely unexplored.

The aim of this work was to evaluate the toxicity effects of bio-based and biodegradable Poly(L-lactide) (PLLA) microplastic fragments at 10 and 100 $\mu\text{g}\cdot\text{L}^{-1}$ on blue mussels (*Mytilus edulis*) exposed in the laboratory for 8 days. Microplastics have been refined by mechanical milling to obtain a spherical-like powder ($0.8 \mu\text{m} < \text{Ø} < 10 \mu\text{m}$). Health consequences were evaluated using various biochemical markers measured in the gills, *i.e.* antioxidant enzyme activities of catalase (CAT), superoxide dismutase (SOD), glutathion S-transferase (GST) as well as neurotoxicity (acetylcholinesterase activity; AChE). In hemolymph, an immunotoxicity assessment was performed, and acid phosphatase activity (AcP) and lysosomal membrane stability (LMS) were analyzed. Finally, a comprehensive metabolomics study was also conducted to examine the variations of lipid metabolites with and without microplastics.

Material and Methods

Microplastic Preparation and Characterization

The commercial grade, bio-based biodegradable plastic used was a Poly(L-lactide) (PLLA-4032D; NatureWorks LLC (USA); film-grade; $M_n(PS) = 143,000$; $D = 2$. According to supplier: D-isomer = 1.4%; relative viscosity 3.94; residual monomer = 0.14%). The initial synthesis of the polymer was a polymerization of lactic acid. The density of the polymer was 1.24. Polymer pellets were crushed using an Ultra Centrifugal Mill ZM 200 (Retsch) with liquid nitrogen to obtain microplastics of PLLA. The powder was then sieved on a stain sieve of 250 μm . The size distribution particles under 250 μm was analyzed with a laser Mastersizer Hydro 3000 (Malvern) granulometer.

Once milled, the particles were used to constitute a stock suspension prepared in deionized water to determine the size distribution. A second stock suspension was prepared in seawater for the exposure experiments.

Experimental design

Blue mussels (*Mytilus edulis*) were purchased from a supermarket (Super U). They were collected by dredging in the North Sea in March, 2018. Organisms were placed in artificial seawater with air diffusion in two laboratory tanks of 70 L capacity, each for acclimation over one week. This step is needed to help the organisms adapt to their new conditions. Commercial sea salt (Tropic Marin®, France) was dissolved in deionized water to create artificial seawater at the desired salinity of 33 Practical Salinity Units (PSU).

After one week of acclimation, 15 individuals were randomly chosen and were placed in nine aquaria filled with 15 L of artificial seawater with air diffusion. Air diffusion was consistently provided throughout the experimental duration to optimizing the distribution and suspension of microplastics. The average size of mussels was 5.2 ± 0.5 cm (mean \pm S.D). Three conditions of exposure were tested: two concentrations of microplastics, D1: 10 $\mu\text{g/L}$ and D2: 100 $\mu\text{g/L}$, and one control condition. For each condition, 3 experimental replicates were performed, with 3 tanks per condition, each including 15 mussels per tank. The exposure was performed in parallel with the three conditions, for a total of nine experimental tanks, for a duration of 8 days without a depuration period. Mortality was monitored daily and dead mussels were removed immediately.

During the acclimation and exposure period, the water was changed every two days. Two hours after every water renewal, the organisms were fed with artificial food (Procoral

phyton, Aquarium Bulle). Stock solution was made of algal powder by taking a concentration of 4.25 g/mL in seawater. One mL of stock solution per 10 L of seawater was given.

The conditions of the chamber for acclimation and exposure were kept constant throughout the experiment. Temperature of the room was adjusted at 13-14°C and white light was provided with a photoperiod of 12h:12h.

For the exposure, the spike of microplastics at the desired concentration was done with diluted suspensions made from the stock suspension. The stock suspension in seawater was sonicated and stirred using a container with a magnetic bar prior to use in order to ensure an adequate homogenization. The diluted suspension was stirred for 5 min before giving the doses. All the aquaria were re-dosed 2h after every water renewal.

After 8 days of exposure, the animals were quickly freeze-died by putting them in liquid nitrogen to avoid the potential stress caused by a slow death. They were stored in a freezer at -80°C until it was time for the analysis. Among the 15 individuals per tank, half of the live individuals were used for the biochemical analysis and the other half were dedicated to the metabolomics analysis. This distribution should lead to more than 20 mussels used to carry out the biochemical and metabolomics analysis, respectively, as per exposure conditions.

Biological Dissection and Analysis

The total live mussels for the three treatments were dissected in order to collect the hemolymph and gills needed for further experiments. Half of the organisms of each tank were randomly selected from the exposure conditions, and used for individual biomarker study. The frozen mussels after eight days of exposure were left on ice for thawing to avoid enzyme degradation. Hemolymph was sampled with a syringe and a sterile needle by a puncturing the posterior adductor muscle. Gills were then collected by dissecting the mussels. For GST, 1/3rd of the total gills were used while the rest of the gills were used for AChE, SOD and protein analysis.

Both the soft tissue weight and the total weight of the mussels were measured to calculate the Condition Index (CI) as follows: $CI = [(whole\ soft\ tissues\ wet\ weight / total\ wet\ weight) * 100]$.

Biochemical Markers

Oxidative stress was evaluated by studying the GST, CAT and SOD activity in the gills. The procedures were adapted from Habig et al. (1974), Clairborne (1985) as well as Beauchamp and Fridovich (1971), respectively. The neurotoxicity was deduced by AChE activity in gills, adapting the protocol from Ellman et al. (1961). Immunotoxicity was estimated by measuring the AcP and LMS in hemolymph. An Acid Phosphatase Kinetic Method Kit (Biolabo Reagents) was used for AcP determination. Lysosomal membrane stability measures involved a neutral red dye retention (NRRT) assay adapted from the description in the manual on the biomarkers recommended for the MED POL biomonitoring program (1999). Finally, the results were expressed with reference to protein concentrations determined according to Bradford (1976), with bovine serum albumin (BSA) as standard.

Metabolomics Analysis

The body of the mussel was individually thawed, weighed, and ground in a pestle and mortar in 10 mL methanol (>99.8% HiPerSolv CHROMANORM®, HPLC grade). The mixture was sonicated for 10 minutes before and after the addition of 10 mL of dichloromethane (> 99.8% stabilized HiPerSolv CHROMANORM®, HPLC grade) to each sample. Then, 9 mL of ultra-pure water was added and the sample was left for sonication for another 5 minutes. By adding these three different solvents of varying polarity, the extract was divided into two phases. After 5 minutes of centrifugation at 1000 G, 18°C, the bottom phase, corresponding to the dichloromethanolic phase, was kept in a pre-weighed tube. The upper layer was re-extracted using 5 mL of methanol and dichloromethane and centrifuged. The bottom phase was then taken out and combined with the previous bottom phase. The organic phase was then evaporated using N₂ at 50°C. After complete evaporation, tubes were weighed again and stored at -20°C until analysis.

The frozen extract was thawed and diluted in a mix isopropanol/chloroform solution (9:1, v/v; HPLC grade) to reach a final concentration of 10 mg/mL extract. A final dilution by 100 was performed with isopropanol modified with formic acid (0.1%) and ammonium formate (10 mM). A quality control sample (QC) was prepared as a mixture of all prepared samples.

Samples at a concentration of 0.1 mg/ml were injected (10µL) and analyzed by high-performance liquid chromatography (HPLC) coupled with High Resolution Mass Spectrometry analysis (HRMS) through a Flow Injection Analysis (FIA) strategy.

The tests were performed using an Acquity H-Class® UPLC™ device coupled to a Synapt™ G2 HRMS Q-TOF mass spectrometer equipped with an electrospray ionization (ESI) interface operating in the positive and negative ionization mode (Waters Corporation, Milford, MA, USA). The mobile phase was composed of acetonitrile (ULC-MS grade, Biosolve Valkenswaard, Netherlands) and isopropanol (ULC-MS grade, Biosolve Valkenswaard, Netherlands) in 9:1 (v/v) proportion modified by 0.1% formic acid and 10 mM of ammonium formate, with a flow rate of 0.4 mL/min. The full-HRMS mode was applied for lipid detection (mass-to-charge ratio (m/z) range 200–1,200) at a mass resolution of 25,000 full-widths at half maximum (continuum mode). The ionization settings were as follows: capillary voltage, +2 kV; cone voltage, 30 V; desolvation gas (N₂) flow rate, 900 L/h; desolvation gas/source temperatures, 550/120°C. Leucine enkephalin solution at 2 µg/mL (50% acetonitrile) was infused at a constant flow rate of 10 µL/min in the lockspray channel, allowing for correction of the measured m/z throughout the batch (theoretical m/z 556.2771). Data acquisition was achieved using MassLynx™ software version 4.1 (Waters Corporation). According to metabolomic standards (Want et al., 2010), 10 µL of all samples were injected in random order using a dedicated Excel macro (Bertrand et al., 2013) with QC samples and blank samples every 10 and 20 injections, respectively.

Native MassLynx data (Waters) was converted into nCDF (common data format) data using DataBridge software (Waters). Automatic feature detection was performed between 0.5 and 4.5 min with MZmine2 software (Pluskal et al., 2010) using parameters selected according observed data variations. Peaks with a width of at least 0.05 s and an intensity greater than either 20 counts (NI) or 200 counts (PI) were selected with a 100 ppm m/z tolerance and deconvoluted. Feature alignment and gap filling were achieved with an m/z tolerance of 100 ppm and a retention time (RT) tolerance of 0.1 min. Only peaks eluted between 0 and 0.3 min were kept to generate the FIAHRMS data matrices containing features based on m/z and peak area values. This yielded two data matrixes according to both ionization mode containing 589 and 57 features for positive and negative ionization mode respectively. Both data matrixes were concatenated for further data analysis.

Statistical Data Treatment

To highlight the significant differences of the condition index and biochemical markers (CAT, GST, SOD, AChE, AcP, LMS) between exposure treatments (control, D1 and D2), Kruskal-Wallis tests were applied with $p < 0.05$.

The matrix was used for statistical treatments, as Principal Component Analysis (PCA) and orthogonal projection of latent structure with discriminant analysis (OPLS-DA), with the software SIMCA13® (UMETRICS). Preliminary annotation of the features of interest was achieved using the Lipid Blast Database (Kind et al., 2013).

Results

Microplastic Characterization

After grinding, the L-lactic acid polymer (PLLA) was used in the form of powder. The laser diffraction equipped with ultrasound separated the smallest particles which allowed for the analysis of all sizes of microparticles, including nanoparticles. Figure 1 shows the density distribution of the powder. The size of particles ranged between 0.8 and 10 μm , with a large cluster between 0.8 and 2.5 μm .

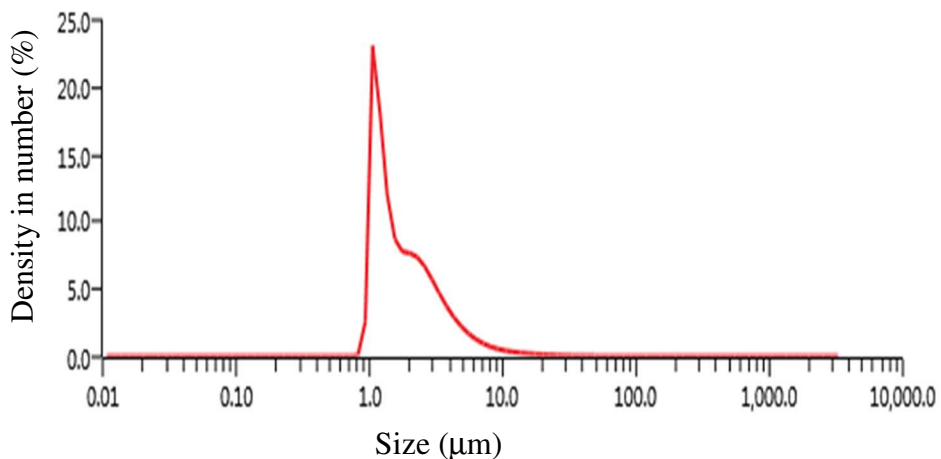


Figure 1: Size distribution of microplastics used for exposure.

Mortality and biological Conditions in Tanks

During the experimental exposure, some of the mussels died in each tank. The total number per condition at the end of the exposure was 37, 36 and 30 bivalves for control, D1 and D2 exposure conditions respectively. The mortality rate was higher in the tanks exposed to 100 $\mu\text{g/L}$ of microplastics.

After 8 days of exposure, the condition index of *M. edulis* did not show any significant differences between the three treatments: 34.5 ± 10.9 , 33.6 ± 10.8 and 39.8 ± 5.1 for Controls, D1 and D2 respectively.

Biochemical Markers

Oxidative stress

CAT, GST and SOD were the enzymes used to evaluate oxidative stress in organisms. In situations when organisms suffer from oxidative stress, the activity of these three biomarkers differs in exposed organisms compared to negative controls.

Figure 2 shows the results of the CAT, GST and SOD activities in mussels from the three conditions after 8 days of exposure.

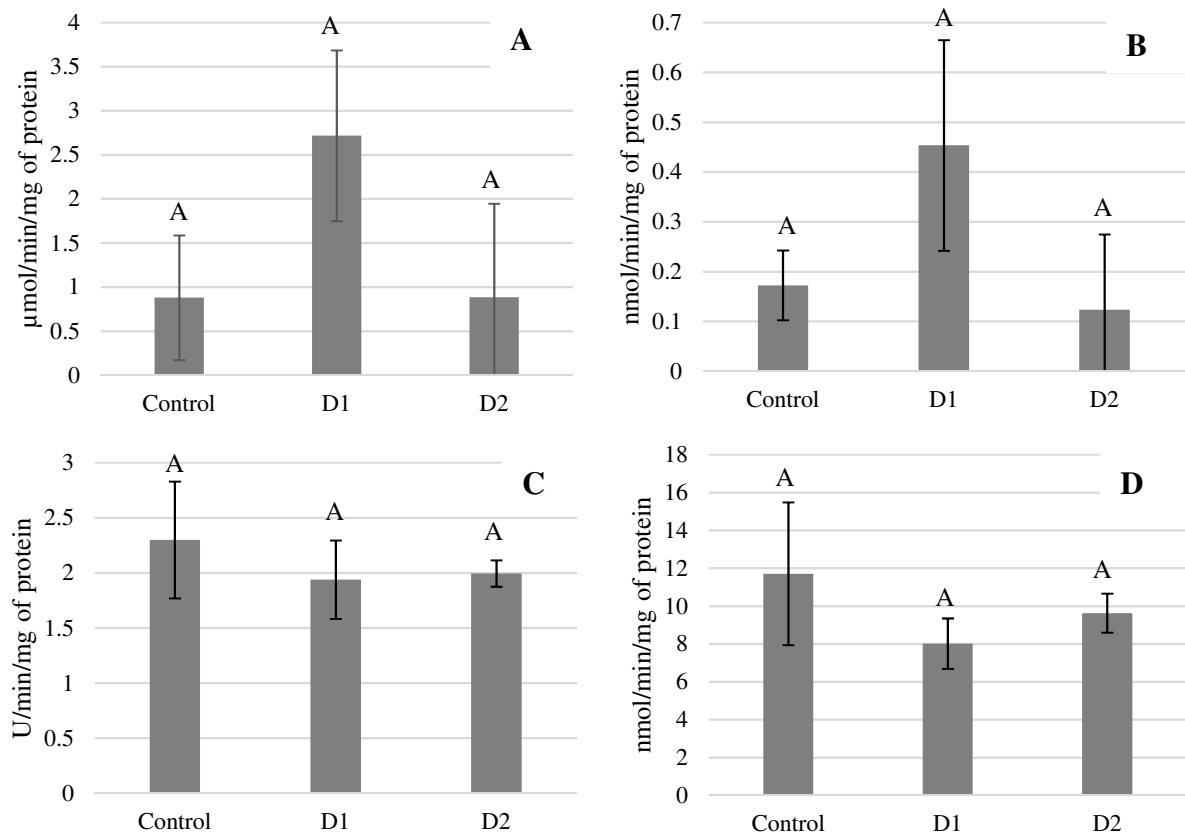


Figure 2: A: Catalase activity (CAT); B: Glutathione S-transferase activity (GST); C: superoxide dismutase activity (SOD); D: Acetylcholinesterase activity (AChE) measured in gills from mussels exposed to three conditions: control (no contamination); D1 (microplastics at 10 $\mu\text{g/L}$); D2 (microplastics at 100 $\mu\text{g/L}$). Values are means with error bars as standard deviation, $n = 19, 19$ and 16 respectively for control, D1 and D2. Different letters correspond to significant differences between treatments (Kruskall Wallis test; $p < 0.05$). U corresponds to an arbitrary unit.

For CAT, the mean obtained for control, D1 and D2 were 0.878 ± 0.707 , 2.716 ± 0.968 and 0.884 ± 1.060 $\mu\text{mol/min/mg}$ of protein, respectively. Concerning GST, average values of 0.172 ± 0.070 , 0.453 ± 0.211 and 0.123 ± 0.151 nmol/min/mg of protein

were observed for the organisms of the control group, D1 and D2 respectively. For both of these enzymes, the activity was found to be higher in the group of organisms exposed to 10 µg/L (D1) compared to control and D2 (100 µg/L), but the differences were not significant. The mean values obtained for SOD activity in gills of mussels in control, D1 and D2 conditions were not significantly different from each other and reached 2.298 ± 0.530 , 1.938 ± 0.356 and 1.995 ± 0.120 U/min/mg of protein, respectively.

Neurotoxic effects

In the current study, no neurotoxic effect was observed as indicated by the activity of AChE in gills (Figure 2). Control results showed a mean activity of 11.7 ± 3.8 nmol/min/mg of protein, which was not significantly different to the contaminated condition activities of 8.0 ± 1.3 and 9.62 ± 1.02 nmol/min/mg for D1 and D2, respectively.

Immunological effects

Hemolymph was extracted to analyze Acid Phosphatase (AcP) and lysosomes membrane stability. The mean AcP values obtained for each condition were not significantly different from each other, reaching 18.59 ± 16.22 , 12.34 ± 7.80 and 11.40 ± 6.00 UI/L for the control, D1 and D2 conditions.

Figure 3 shows the neutral red dye retention (NRRT) in lysosomal membranes as seen visually with the aid of a light microscope for the three treatments and 3 times after coloration, *i.e.* 15 min., 30 min. and 60 min.

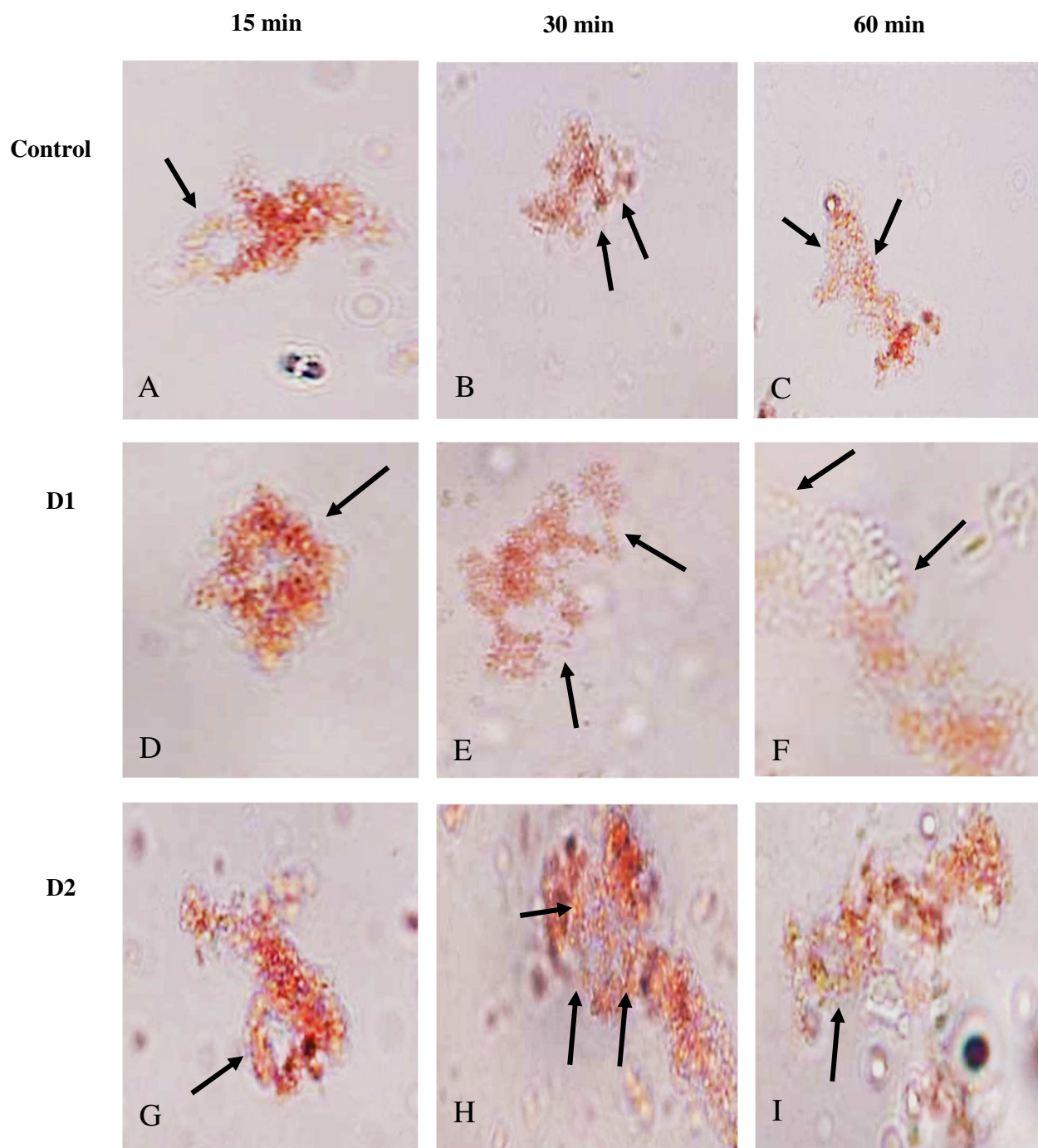


Figure 3: Lysosomal wall stability shown by dye retention capacity. Arrows in the pictures indicate the position of lysosomes. A, B and C show the dye uptake and retention by lysosomes of organisms of control group after 15, 30 and 60 min of labialization period respectively. D, E and F correspond to contamination of microplastics at D1 (10 $\mu\text{g/L}$) and G, H and I at D2 (100 $\mu\text{g/L}$).

NRRT is an assay used as an indicator of the health of the lysosomes. Shape deformity or leakage of dye in cytosol is an indication of wall instability. For the control condition, Figures 3A, 3B and 3C show that lysosomes were round, in perfectly normal shape and with a dye retention of 50% for 60 mins. No sign of shape anomaly was observed in the different pictures of lysosomes from contaminated mussels but leakage of dye for both treatments D1 and D2 was visually observed after comparing Figures 3D, 3E and 3F as well as 3G, 3H and 3I to those of control, particularly after 60 min.

Metabolomics Analysis

To explore lipid modification in relation to exposure, lipids were extracted from individual *M. edulis* biomass. To rapidly evaluate the chemical composition of lipid extract, all extracts were analyzed by FIA-HRMS (Hsu, 2018). All ions detected were extracted from the generated fingerprints using automatic peak picking open source software (Pluskal et al., 2010), yielding the data matrix. The data corresponds to detected features observed in each mussel, provided as detected m/z along with their signal peak area. To explore metabolic alteration, a preliminary multivariate unsupervised data analysis was performed using PCA (Figure 4A). The first two components (PC1 and PC2) explained 18.3% and 9.8 % of the total variance of the data matrix. No clear clustering was observed within the first two axes of the PCA, however, an exposure gradient can be observed along the second axis, with unexposed *M. edulis* samples being located on the bottom of the PCA and highly exposed samples (D2, 100 $\mu\text{g/L}$) residing on the upper side. The low (intermediate) exposure (D1, 10 $\mu\text{g/L}$) is located between 'no' and 'high' exposure along PC2. In addition, discrimination between D1 and D2 were lower in comparison to control. The PC1 was only related to individual sample variability. The PCA (Figure 4A) highlights that an exposure effect should be significantly retrieved from the data using supervised multivariate data analysis.

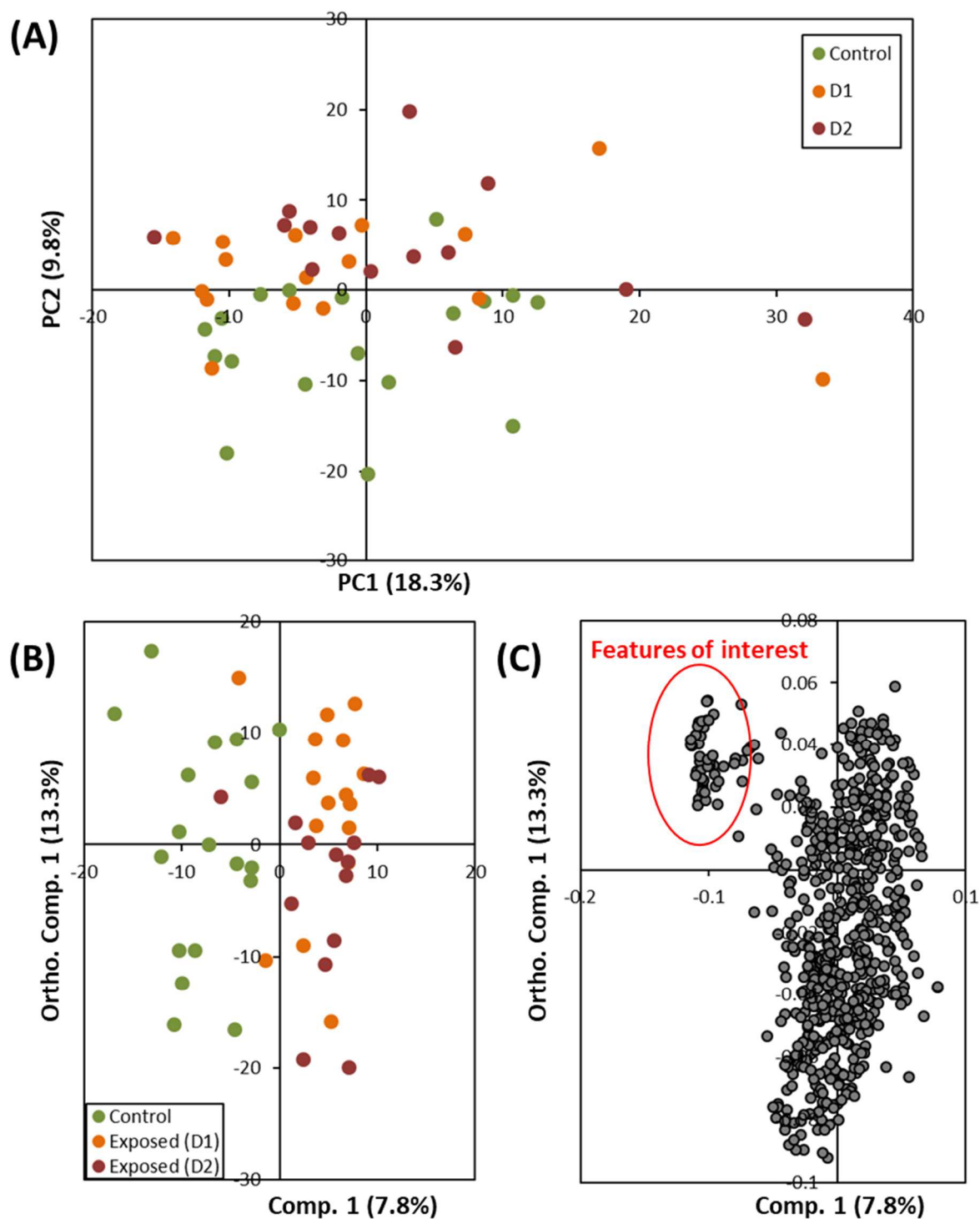


Figure 4: multivariate unsupervised and supervised data analysis of FIA-MS data from *M. edulis* extracts showing the impact of microplastic exposure (D1: 10 $\mu\text{g/L}$ and D2: 100 $\mu\text{g/L}$ of microplastics) to its lipidome. **A**) scores plot of the principal component analysis (PCA, UV scaling (van der Berg et al., 2006), samples were highlighted according to microplastic exposure. **B**, **C**) supervised analysis using orthogonal projection of latent structure with discriminant analysis (OPLS-DA) (UV scaling) highlighting differences between unexposed

and exposed (D1 and D2 simultaneously) *M. edulis* samples. The scores plot (B) shows, as expected, the separation between control and exposed samples and the corresponding loading plot (C) highlights the features of interest (in red) based on the OPLS-DA analysis (Table 1).

Supervised data analysis was performed using OPLS-DA focusing on searching for the exposure effect, either high (D2, 100 µg/L) or low (D1, 10 µg/L) in comparison to the control (no exposure) (Figures 4B and 4C). The OPLS-DA model ($R^2Y = 0.702$) highlights a separation on component 1 (7.8%) (Figure 4B). The orthogonal axis of the OPLS-DA (Ortho. Comp. 1) was able to distinguish in an unsupervised way between both exposures. The OPLS-DA model was used to highlight features of interest related to the exposure effect. Interestingly, the most significantly altered lipids were down-regulated during exposure (Figure 4C). This yields to the selection of 48 features (variable importance in the projection: $VIP > 2$) down regulated in the individuals exposed for 8 days to microplastics whatever the dose (Table 1), all detected in positive ionization mode. Those features were further annotated based on high mass accuracy using the Lipid Blast Database (Kind et al., 2013). Most of these annotated features were putatively identified as glycerophospholipids.

Table1. Features of interest highlights by the OPLS-DA analysis (Figure 4) along with putative annotation using Lipid Blast Database (Kind et al., 2013).

Ionisation mode	<i>m/z</i>	VIP value	Putative annotations
positive	980.2780	3.21	
positive	833.2420	3.17	
positive	908.2582	3.14	Fatty amids (58:2)
positive	539.1635	3.09	Sophorolipid lacton form SLP lacton (44:4); Sulfoquinovosyldiacylglycerols SQDG (44:0); Diacylglycerophosphoglycerols PG (50:6); Monoalkylglycerophosphoinositols PI (47:7)
positive	614.1788	3.07	mono-Rhamnolipid mRL (49:1); Monoacylglycerophosphates PA (52:3)
positive	613.1817	3.02	
positive	522.1351	2.96	Monoacylglycerophosphoserines PS (46:3)
positive	874.2652	2.96	Monoalkylglycerols MG (48:5); Dialkylglycerols DG (48:5)
positive	836.2351	2.91	
positive	540.1622	2.86	Monoacylglycerophosphoserines PS(50:5)
positive	462.1479	2.85	Monoacylglycerophosphocholines PC(41:4); Monoacylglycerophosphoethanolamines PE(44:4)
positive	446.1211	2.81	
positive	838.23151	2.78	Fatty nitriles Nitrile (34:5)
positive	615.1781	2.78	Diacylglycerophosphoglycerols PG(48:0); Monoalkylglycerophosphoinositols PI(45:1); Monoacylglycerophosphates PA(55:5)
positive	928.2646	2.73	Fatty nitriles (65:3); Hydrocarbons (66:4)

positive	837.2312	2.73	Fatty amids (30:3)
positive	764.2159	2.71	
positive	448.1178	2.69	Diacylglycerophosphocholines PC(40:8); Diacylglycerophosphoethanolamines PE (43:8)
positive	1002.2838	2.69	Monoalkylglycerophosphocholines PC(15:1); Monoalkylglycerophosphoethanolamines PE(18:1); Ceramide 1- phosphates CerP(23:0)
positive	762.2163	2.68	Monoacylglycerophosphocholines PC(17:2); Monoacylglycerophosphoethanolamines PE(20:2)
positive	1150.3187	2.66	Sophorolipid lacton form SLP lacton (13:2)
positive	929.2670	2.65	
positive	1501.4001	2.64	Monoacylglycerophosphocholines PC (20:8); Monoacylglycerophosphoethanolamines PE (23:8)
positive	1075.3032	2.61	Monoacylglycerophosphocholines PC (18:1); Monoacylglycerophosphoethanolamines PE (21:1)
positive	780.2274	2.58	
positive	1076.3023	2.55	
positive	799.2446	2.54	
positive	629.1961	2.53	Monoacylglycerophosphoserines PS (52:0)
positive	1001.2860	2.52	Fatty acids FA (9:2); Fatty esters Ester (9:2)
positive	801.2397	2.51	Monoacylglycerophosphocholines PC (20:4); Monoacylglycerophosphoethanolamines PE (23:4)
positive	854.2478	2.50	
positive	689.1978	2.47	Monogalactosyldiacylglycerol MGDG (34:0); Dialkylglycerophosphoglycerols PG (37:3); Monoalkylglycerophosphoglycerols PG (37:3); Diacylglycerophosphates PA (40:1)
positive	705.2113	2.44	Monoacylglycerols MG (52:6); Alkylacylglycerols DG (52:6); Dialkylmonoacylglycerols TG (52:6)
positive	1149.3248	2.38	
positive	1077.2888	2.38	Monoacylglycerophosphocholines PC (18:0); Monoacylglycerophosphoethanolamines PE (21:0); Acylceramides Cer (33:8)
positive	800.2471	2.38	Sophorolipid lacton form SLP lacton (13:4); Sulfoquinovosyldiacylglycerols SQDG (13:0); Diacylglycerophosphoglycerols PG (19:6); Monoalkylglycerophosphoinositols PI (16:7)
positive	630.1943	2.35	Dialkylglycerophosphocholines PC (54:5); Monoalkylglycerophosphocholines PC (54:5); Dialkylglycerophosphoethanolamines PE (57:5); Monoalkylglycerophosphoethanolamines PE (57:5); Ceramide 1- phosphates CerP (62:4)
positive	873.2656	2.26	
positive	1003.2831	2.23	Dialkylglycerophosphocholines PC (16:1); Monoalkylglycerophosphocholines PC (16:1); Dialkylglycerophosphoethanolamines PE (19:1); Monoalkylglycerophosphoethanolamines PE (19:1); Ceramide 1- phosphates CerP (24:0)
positive	806.7193	2.20	
positive	631.1954	2.13	Sophorolipid lacton form SLP lacton (48:6); Sulfoquinovosyldiacylglycerols SQDG (48:2)
positive	991.0063	2.11	
positive	685.6968	2.05	Diacylglycerophosphoglycerols PG (19:2); Monoalkylglycerophosphoinositols PI(16:3)
positive	685.3964	2.03	

positive	706.2079	2.02	Diacylglycerophosphocholines PC (41:5); Diacylglycerophosphoethanolamines PE (44:5); Dialkylglycerophosphoserines PS (43:6); Monoalkylglycerophosphoserines PS (43:6)
positive	875.2622	2.01	
positive	628.3562	2.01	mono-Rhamnolipid mRL (56:7); Sophorolipid lacton form SLP lacton (46:2)

Discussion

The current study is aimed at investigating the potential of bio-based and biodegradable plastic to negatively affect the health of the blue mussel, *M. edulis*. Considering the fact that a huge proportion of debris produced globally ends up in the oceans (Thompson 2006), it is accurate to say that biodegradable polymers enter the ocean and act in the same way as other kinds of debris. Its tendency to naturally degrade completely reduces the physical conditions necessary for environmental degradation (Garlotta, 2001). Previous studies have already confirmed that non-biodegradable plastics alter gene expression, feeding rates, predation activity, ovulation, development of embryo, biomarker responses, and weight reduction in bivalves (Phuong et al., 2016). The results of the present study validated that biodegradable microplastics also stresses the blue mussel, mainly at the lipidome level.

Mortality of Mussels

The results of mortality showed that during the experimental exposure, some of the mussels died in each tank. The total number per condition at day 8 of exposure was 37, 36, and 30 bivalves for control, D1, and D2 exposure condition, respectively. Even if an acclimation period was performed, the health of the mussels could be negatively affected by their commercialization in the supermarket, which represents a weakness. Nevertheless, the purchase of mussels can present advantages compared to their collection in the field. The organisms are likely more homogenous, allowing for less intraspecies variations, as they are often cultivated in the same conditions, with similar age. Mortality rate was not significantly different between the conditions, but the highest was in the tanks exposed to 100 µg/L of microplastics. The mortality suggested that there was an inability of the organisms to cope with the stress of contamination. The intrinsic property of organisms to acclimate to stressful conditions is without doubt, but the threat of higher concentrations of microplastics cannot be ignored. The highest concentration of microplastics could represent a higher risk of physical blockages in the intestinal tract, as already observed for petroleum-based microplastics (Wright et al., 2013; Canesi et al., 2015). Blockages are physical alterations not dependent on the nature of the plastics themselves and therefore could lead to direct death of organisms.

Modulation of Oxidative Stress Due to Microplastics

Biological systems produce oxygen free radicals in the living cells for better physiological function (Halliwell and Gutteridge, 1999). The upregulation of reactive oxygen

species (ROS) and its balance in the body is essential for the health of organisms (Ames et al., 1993; Akhaishi et al., 2007; Bouchard et al., 2009). In some cases, during metabolism, 2-3% of free radicals escape the antioxidant mechanism, resulting in oxidative damage to the cell. The imbalance between production and neutralization of ROS creates oxidative stress (Davies, 1995). Aquatic organisms have shown an increased sensitivity towards pollutants by exhibiting oxidative stress (Livingstone, 2001; Valavanidis et al. 2006; Lackner, 1998). CAT, GST, and SOD are involved in the removal of reactive oxygen and hydroxyl radicals from the bodies of marine organisms. The elevated activity of the SOD enzyme reflects the need for rapid conversion of oxygen anions into less damaging H_2O_2 to prevent oxidative damage. CAT and GST are involved in scavenging the necessary H_2O_2 , which can potentially be converted into hydroxyl radicals. GST deals mainly with the peroxide produced metabolically, while CAT is a defense mechanism acts on exogenous sources of peroxide molecules (Regoli and Giulliani, 2014).

The effect of the microplastics studied using biomarkers lead to no significant differences between exposed organisms and controls. Nevertheless, microplastics have slightly, but not significantly, elevated the activity of CAT and GST in mussels after exposure to PLLA microplastics at the 10 $\mu\text{g/L}$ concentration.

In order to compare the effects of bio-based and biodegradable microplastics to petroleum-based microplastics on bivalves, Table 2 lists works of the literature dealing with laboratory exposures. However, the comparison is not easy because the experimental designs are not equivalent between the studies in terms of species, microplastics (type, form, size, concentration), duration, and biomarkers.

Most of the studies highlighted some oxidative stress in the different tissues of the organisms, mostly in the digestive glands and the gills (Trestrail et al., 2020). For a somewhat similar exposure times between 7 to 10 days, Avio et al., (2015) showed limited variations of antioxidant defenses in the digestive tissues of *Mytilus galloprovincialis* exposed to 1.5 g/L of < 100 μm powdered PE and PS, virgin or with pyrene sorption. Inhibition was also observed for Se-dependent glutathione peroxidases and CAT. Moreover, a higher genotoxic effect (nuclear alterations and micronuclei damage) in the haemocytes of exposed mussels hypothesized an enhancement of ROS production in response to microplastics, specifically to virgin PS. In the same exposure timeframe, the study of Paul-Pont et al. (2016) showed a reduced activity of CAT, lipid peroxidase (LPO), and enhanced GST and SOD activity in the digestive glands of *M. edulis* and *M. galloprovincialis* after an exposure of marine mussels to PS microbeads of 2 and 6 μm at 32 $\mu\text{g/L}$. But these upregulations were observed at T14,

during a depuration phase, and it was concluded from the study that organisms exposed to PS microbeads showed a great capacity for rapid conversion of reactive oxygen into less harmful H_2O_2 . The 6-day exposure of the bivalve *Dreissena polymorpha* exposed to PS microbeads of 1 and 10 μm at $5 \cdot 10^6$ particle/L displayed a modulation of CAT and GST (Magni et al., 2018). Another recent work about petroleum-based plastics, Revel et al., 2019, involving 10 days of exposure showed perturbations of enzymes in gills of blue mussels, *M. edulis* after exposure with a mix of PE and PP fragments at 100 $\mu g/L$. The modulation of antioxidant enzyme activities measured with SOD and CAT increased in gills of exposed organisms. The comparison of these 3 studies is impossible, due to massive variation in experimental particle sizes. For example, in Avio et al., 2015, sizes ranged from 100 to 1000 μm , while in Paul-Pont et al., 2016, microplastic sizes were 2 and 6 μm . The concentrations studied were also widely varied, from 32 $\mu g/L$ (Paul-Pont et al., 2016) to 1.5 g/L (Avio et al., 2015) and even expressed in a other units than m/v, i.e. $1.5 \cdot 10^7$ particles/L, which leads once again to an impossible comparison.

In regards to other studies implementing time exposures, from as low as 3h (Kinjo et al., 2019), 24h (Détrée and Gallardo-Escarate, 2017) and 48h (Webb et al., 2020) to as high as 14 days (Ribeiro et al., 2017), even 26 days (González -Soto et al., 2019) and 28-64 days (Détrée and Gallardo-Escarate, 2017), only one conclude to oxidative stress (Ribeiro et al., 2017) or upregulations of genes relative to it (Détrée and Gallardo-Escarate, 2017). According to the results of the present study, it would seem that bio-based and biodegradable microplastics are not a threat to the integrity of the physiology of the organism by inducing oxidative stress. Nevertheless, it does not mean that PLLA would be ecosafe compared to petroleum-based microplastics since the induction of oxidative stress is not reported in all the studies using petroleum-based microplastics for experiments. A gap still exists in the normalization of the environmental risk assessment of microplastics, even if some papers already discuss it (Phuong et al., 2016; Paul-Pont et al., 2018).

Table 2: Changes in biomarkers related to laboratory exposures of bivalves to microplastics.

Species	Nature	Form	Particle size	Conc.	Duration	Endpoints	Ref.
<i>Mytilus edulis</i>	HDPE	fluff	>0-80 µm	2.5 g/L	96 days	- accumulation in lysosomal system - histological changes - inflammatory response - lysosomal membrane destabilization	Von Moos et al., 2012
<i>Mytilus galloprovincialis</i>	PS PE (with or without pyrene)		100-1000 µm <100 µm virgin	1.5 g/L	7 days	- DNA strand broke in hemocytes - Nuclear anomalies - AChE decreased in gills - Inhibition of Se-dependent – Decreased GST and CAT activity - Lysosomal integrity affected	Avio et al., 2015
Marine mussels	PS	Microbeads	Mix of 2 and 6 µm	32 µg/L	7 days exposure/ 7 days depuration	- Hemocyte mortality - Increased production of ROS in hemocytes - Decreased granulocyte concentration - Enhanced phagocytosis activity - Reduced activity of CAT and LPO and enhanced GST and SOD activity in DG - Significant effects on mRNA levels	Paul-Pont et al., 2016

<i>Mytilus Galloprovincialis</i>	PE	Microbeads	1-50 µm	1.5.10 ⁷ MP/L	24h	Gene expression in 4 tissues: - up-regulation of genes relative to carbon metabolism, oxidative stress, immune response and apoptosis, in the mantle and digestive gland - down-regulation of genes involve in carbon metabolism was observed in the haemolymph and gills	Détrée and Gallardo-Escarate, 2017
<i>Scrobicularia plana</i>	PS	Microbeads	20 µm	1 mg/L	14 days exposure/ 7 days depuration	- oxidative stress in gills and DG - inhibition of AChE - genotoxicity	Ribeiro et al., 2017
<i>Mytilus Galloprovincialis</i>	HDPE	Microbeads	1-50 µm	4.6.10 ⁵ MP/L	28 days exposure/ 18 days depuration/ 64 days exposure	- 1 st exposure: production of stress and immune-related proteins and diminution of energy allocated to growth - depuration: activation of apoptotic processes and up-regulation of immunereceptors and stress-related proteins - 2 nd exposure: stress-memory upon microplastics based on gene expression data	Détrée and Gallardo-Escarate, 2018
<i>Dreissena polymorpha</i>	PS	Microbeads	1 and 10 µm	Mix 1: 5.10 ⁵ MP/L both 1 and 10 µm	6 days	- Induction of neurotoxicity by increasing dopamine production - Modulation of CAT and	Magni et al., 2018

				<u>Mix 2:</u> 2.10 ⁶ MP/L both 1 and 10 µm		GST in the organisms exposed to Mix 1.	
<i>Dreissena polymorpha</i>	PS	Microbeads	1 and 10 µm	<u>Mix 1:</u> 5.10 ⁵ MP/L both 1 and 10 µm	6 days	Protein modulation lacking in the lowest concentration group while 78 proteins differently modulated in the other group.	Magni <i>et al.</i> , 2018
				<u>Mix 2:</u> 2.10 ⁶ MP/L both 1 and 10 µm			
<i>Mytilus galloprovincialis</i>	PS	Microbeads	0.5 and 4.5 µm	7.44.10 ⁵ MP/mL for 0.5 µm 1000 MP/mL for 4.5 µm	26 days	0.5 µm MPs: more toxicity for DNA and cell composition of digestive tubules. Increased inflammatory response in tissues. 4.5 µm: found in stomach contents and epithelial cells of digestive system.	González-Soto <i>et al.</i> , 2019.
<i>Mytilus edulis</i>	PE/PP (v:v)	Fragments	0.4- 950 µm	0.008, 10 and 100 µg/L	10 days exposure/	- Increases of SOD and CAT in digestive gland (0.008 and 10 µg/L) - Increases of SOD and CAT in gills (100 µg/L) - Increase of acid phosphatase activity in hemolymph (0.008 and 10 µg/L)	Revel <i>et al.</i> , 2019
<i>Mytilus galloprovincialis</i>	PS	Microsphere	1, 10 and 90 µm	Aliquots of 15,000 microspheres	3h	GRT was found to be directly related to the sizes with highest GRT for MPs of 90 µm	Kinjo, A. <i>et al.</i> , 2019
<i>Perna canaliculus</i>	PE	Microbeads	38-45 µm	1 g/cc	48h	Decrease of: - Clearance rate - Oxygen respiration rate	Webb <i>et al.</i> , 2020

PS: polystyrene, PE: polyethylene, HDPE: High-density polyethylene; MP: microplastics; AChE: acetylcholinesterase; GST: glutathion S-transferase; SOD: superoxide dismutase activity; DG: digestive gland; CAT: catalase; ROS: reactive oxygen species; LPO: lipid peroxidase; GRT: gut retention time.

1 **Induction of neurotoxicity**

2 Literature has reported the presence of AChE enzymes at cholinergic and non-
3 cholinergic neurons as well as in the central ganglia of the nervous system in mollusks (Giller
4 and Schwartz, 1971; Galloway and Handy, 2003). Its role, however, is still unclear in
5 mollusks (Heyer et al., 1973; Dauberschmidt et al., 1996; Rickwood & Galloway, 2004).
6 Some studies have raised the speculations on the involvement of AChE as a function of the
7 growth factor (Soreq and Seidman, 2001). An increased neurite growth was observed in
8 cholinergic and dopaminergic neurons of *Aplysia californica* (Srivastan, 1999). However, for
9 hazard identification in risk assessment, a void of information exists on the intraspecies
10 variations, which illustrates the inability to scientifically interpret the neurotoxicity data.

11 The results of the current study showed no neurotoxic effects of PLLA microplastics
12 in mussels. On the contrary, Avio et al. (2015) reported a significant down regulation of
13 AChE activity in the gills of *M. galloprovincialis* of contaminated groups by microplastics
14 (<100 µm), of virgin PE, and PS at 1.5 g/L or pyrene sorbed, after 7 days exposure. To the
15 best of our knowledge, no other work about the neurotoxic effects of microplastics on mussels
16 has been published. Concerning other species, clams (*Scrobicularia plana*) exhibited
17 significant inhibition of AChE after 20 µm PS microplastic exposure at 1 mg/L for 14 days,
18 followed by 7 days of depuration, the phase after exposure corresponding to a phase of
19 maintaining organisms without contamination. (Ribeiro et al., 2017). Oliveira et al. (2013)
20 worked on common goby (*Pomatoschistus microps*). After giving 96 h exposure of 1-5 µm
21 sized PE microspheres (0, 18.4 and 184 µg/L) in the presence and absence of pyrene (20 and
22 200 µg/L), 22% inhibition of the aforementioned enzyme was observed. Moreover,
23 concentrations as high as 500 µg/L resulted in inhibiting AChE by 42% in common goby after
24 96h of exposure (Oliveira et al., 2013).

25

26 **Response of Lysosome to Microplastics**

27 Lysosomes are the structures which are involved in the detoxification of foreign
28 objects or pollutants (Izagirre et al., 2009). They contain more than 50 hydrolytic enzymes,
29 such as acid phosphatase (AcP), and have a semi-permeable membrane (Moore, 1976; Barret
30 and Health, 1977; Ferreira and Dolder, 2003). Macrostructures are engulfed and broken down
31 in the process of autophagy by these organelles. Additionally, toxic chemicals, upon entering
32 the body, are also detoxified by lysosomes (Moore et al., 1980a, 1980b; Nott et al., 1985;
33 Viarengo et al., 1985; Sarasquete et al., 1992; Cajaraville et al., 2000; Moore et al., 2004;
34 Koehler et al., 2008; von Moos et al., 2012). Previous studies were conducted to validate the

35 use of AcP as lysosomal biomarkers (Jayakumar et al., 2008). Lysosomal membrane stability
36 (LMS) was also demonstrated as a sensitive biomarker for pollutants (Moore, M. N. 1985 &
37 1988; Viarengo et al., 2007). If the concentration of contaminants increases the capacity of the
38 cells to withhold dye, the membrane becomes leaky and unsteady. In severe stress cases,
39 hydrolytic enzymes burst out of the lysosome walls and enter the cytoplasm, with the
40 potential to cause cell death (Koehler et al., 2002). In the case of an impairment in the
41 lysosome membrane, uptake and retention of dye used for the LMS essay will be reduced
42 over time (Lowe et al., 1992).

43 In the current study, the measure of AcP activity coupled to LMS from the
44 hemolymph of mussels allowed us to monitor the health of lysosomes after microplastic
45 exposures. The use of AcP and LMS as lysosomal biomarkers were validated by the coherent
46 results of both parameters. The two assays showed insignificant health implications of
47 microplastics to lysosomes. No significant difference of AcP activity was observed between
48 the different exposure conditions. Lysosomes from the hemolymph of the exposed mussels
49 showed no real differences in retention of dye in the current study, alluding to no observable
50 impairment of the membrane. The amphiphilic nature of dye meant it became trapped in the
51 cell wall matrix in the process of protonation (Moore et al., 2004). The insignificant
52 differences in exposed and unexposed mussels over time indicated no prominent effects on
53 the working of the proton pump. It can be hypothesized from the results of the current study
54 that microplastic exposure did not threaten the cellular physiology enough to initiate
55 indiscriminate autophagy (Versteeg and Giesy, 1985).

56 As for oxidative stress, even if some publications exist about the response of
57 microplastics, the comparison of the data remains difficult to highlight the implications of the
58 nature-based microplastics. Von-Moos et al. (2012) reported lower dye retention in lysosomes
59 of *M. edulis* after 96h exposure of 2.5 g/L of >0-80 µm HDPE fluff, which represents an acute
60 exposure (short exposure time/high concentration). Avio et al. (2015) showed that lysosomal
61 integrity appeared more sensitive than antioxidant biomarkers in *M. galloprovincialis*, as it
62 decreased after exposure to both virgin and pyrene-sorbed PE and PS microplastics at a high
63 concentration of 1.5 g/L, during 7 days. Recently, Revel et al. (2019) revealed a significant
64 increase of AcP activity in lysosomes, from the hemolymph of mussels exposed to 0.008 and
65 10 µg/L of a mix of PE and PP particles during 10 days. The similarities of experimental
66 designs between this last study and the present one allows to conclude that PLLA would be
67 safer than petroleum-based microplastics. However, further investigations are needed to
68 confirm this hypothesis. Moreover, study on lysosomes in digestive glands would be helpful

69 in evaluating the impacts of bio-based microplastics on lysosomes. The gills play a role in the
70 uptake of particles via microvilli by the process of endocytosis, and with the help of cilia the
71 particles can navigate their way to stomach, intestines, and eventually to the digestive glands
72 (Von Moos et al., 2012). Nevertheless, all these processes are totally dependent on the size of
73 the particles (Paul-Pont et al., 2018).

74

75 **Metabolomics Implication**

76 Metabolomics analysis is increasingly used to investigate organismal responses at the
77 molecular level in conjunction with the development of the analytical technology and the
78 methods of data treatments (Dumas et al., 2020). Metabolomics aim to profile the end
79 products of the regulatory processes of a cell and hence are closely related to the biological
80 condition of an organism when compared to transcriptomics or proteomics (Miracle and
81 Ankley, 2005). Nuclear Magnetic Resonance (NMR) spectroscopy, or mass spectrometry, are
82 the analytical techniques involved in the metabolomics analysis. The metabolic phenotype of
83 the organisms can be considered as an indicator of tissue differentiation, disease or
84 environmental stresses, such as climate changes or pollution (Bundy et al. 2009; Hines et al.
85 2010; Flores-Valverde et al. 2010; Van Aggelen et al. 2010; Cubero-Leon et al., 2012). This
86 tool can be used with organisms either from the field (Southam et al., 2014) or employed
87 during laboratory exposures. For example, metabolomics has been previously used to
88 investigate responses in mussels after exposures to nickel and chlorpyrifos (Jones et al.,
89 2008).

90 Mass spectrometry-based profiling techniques were performed in the present study.
91 The multivariate analysis of the ion intensities observed in each mussel using PCA depicted
92 the discrimination of controls from PLLA microplastic exposed mussels, regardless of the
93 dose of exposure. These results showed that the microplastic exposure lead to an effect on the
94 mussels at the molecular level. The 48 down-regulated features were responsible for the
95 discrimination of mussels in the OPLS-DA. Most of them were identified as
96 glycerophospholipids based on HR-MS accuracy (Table 1). Glycerophospholipids are one of
97 the major components of lipid membranes. They fulfill several roles, such as messengers, in
98 the regulation of the binding of proteins to membranes, and in the participation in signaling
99 such as cell cycle and apoptosis (Hannun and Obeid, 2008).

100 With coarse-grained molecular simulations, Rossi et al. (2014) showed that
101 polystyrene (PS) nanoplastics were able to permeate easily into lipid membranes. They
102 changed the membrane properties and lateral organization, affecting membrane protein

103 activity and cellular function. Nevertheless, these results involved the use of small
104 nanoplastics, which is not the case of the present study. The results of the simulation of Rossi
105 et al. (2014) were mentioned by Tallec et al. (2018) as an explanation for the malformations
106 of oyster embryos after exposure with PS particles at different sizes (50 nm, 500 nm and
107 2 μm) and concentrations (0.1, 1, 10, and 25 $\mu\text{g}/\text{mL}$), which let them consider future
108 lipidomic approaches to assess lipid membrane composition. Only the smallest sizes, *i.e.*
109 50 nm, lead to significant effects on oyster gamete and embryo-larvae life stages. These
110 results highlighted the difference between nano- and micro-plastics whose behavior,
111 bioavailability, and toxicity are known to be very different (Paul-Pont et al., 2018). Such
112 suggested lipid membrane disturbance can presumably originate from interaction between
113 biological membranes and plastic particles due to their physical properties. It is of great
114 importance when particles are smaller than 100 nm, as it changes their surface area and
115 subsequent interaction with biological membranes (Klaine et al., 2012). The permeation of
116 microplastic fragments between 0.8 and 10 μm through the lipid membranes is probably not
117 envisaged, but the possible presence of additives in the polymer could be a way of explaining
118 the effects observed on glycerophospholipids.

119 Finally, metabolomics and precisely lipidomic analysis, is (i) a complementary tool to
120 biochemical analysis in ecotoxicology studies, (ii) a contribution to the understanding of the
121 microplastic action on cellular mechanisms of and (iii) a promising tool in risk assessment of
122 coastal environments.

123

124 **Environmental Relevance**

125 In this study, the concentrations of microplastics used in the tanks, *i.e.* 10 and
126 100 $\mu\text{g}/\text{L}$, were chosen to be quite small compared to other studies (von Moos et al., 2012,
127 Avio et al., 2015). They are in accordance with others using 32 $\mu\text{g}/\text{L}$ (Paul-Pont et al., 2016)
128 and 0.008, 10 and 100 $\mu\text{g}/\text{L}$ (Revel et al., 2019), the latter of which are environmentally
129 relevant concentrations. Nevertheless, these concentrations cannot be compared to others
130 expressed in number of particles per volume unit, which is more representative of
131 concentrations measured in the field. Concerning bio-based and biodegradable microplastics,
132 the concentrations are probably not representative of the field, since this type of polymer is
133 quite rarely detected in the works evaluating the environmental contamination (Phuong et al.,
134 2016).

135 At the highest concentration of 100 $\mu\text{g}/\text{L}$, the results were not significantly different to
136 the controls, even if the mortality was the highest in this group (discussed above). Moreover,

137 the findings of biomarker studies showed that microplastic concentrations of 10 µg/L lead to
138 slight, but non-significant, biochemical effects (CAT and GST) on *M. edulis* after 8 days of
139 exposure. Consequently, the correlation between effects and microplastic concentrations
140 would not be linear. This result could be explained by the feeding behavior of mussels. The
141 filtration activity of mussel could be disturbed in cases of high presence of microplastics,
142 leading to lower impregnation by contaminants, as well as lower impacts. In literature, the
143 filtering activity of *M. edulis* was shown as significantly dependent on different types of
144 suspended particles (Navarro et al., 1990), likely including particles of plastics as it was
145 shown with nanoparticles of PS at varying concentrations (0.1, 0.2 and 0.3 g/L) used for
146 exposure experiments (Wegner et al., 2012). Valve opening, in millimeters, decreased from
147 4 mm to 1 mm in the presence of aggregated nanoparticles after 20 min of exposure. The time
148 was necessary for the mussels to determine that nanoparticles of PS were a low nutritional
149 food (Wegner et al., 2012). Finally, the same study concluded that the time decreased feeding
150 and increased production of pseudo-feces, which lowered the energy acquisition and
151 consequently starved the mussels.

152

153 **Conclusions**

154 This experiment illustrated that combinations of biomarkers can be utilized to
155 characterize the dose and effect relationships of bio-based and biodegradable microplastics on
156 the blue mussel (*M. edulis*). From the results obtained from the PLLA microplastic exposure
157 studies at 10 and 100 µg/L, with size ranging from 0.8 and 10 µm, during 8 days, it is
158 concluded that organisms exhibited no significant signs of both oxidative stress and
159 neurotoxicity. Slight, but not significant, increased activities of CAT and GST biomarkers in
160 the organisms exposed to 10 µg/L were found. It is correlated with an upregulation of
161 antioxidative enzymes, implying an increase in the physiological challenges the organisms
162 faced after microplastic exposure. No significant difference in lysosomal membrane structures
163 was observed as well. It can be hypothesized that microplastics did not threaten the cellular
164 physiology in gills enough to initiate indiscriminate autophagy. The results showed the
165 lipidome of mussels would be impacted by microplastics at both doses. Glycerophospholipids,
166 important structural lipids of biological membranes, seemed to be the most disrupting lipid
167 category in individuals exposed to microplastics. The comparison of the results of the present
168 study to those of the literature does not allow us to confirm that bio-based and compostable
169 particles are safer than petroleum-based ones. Finally, biochemical

170 and metabolomic approaches were complementary tools in the assessment of the
171 environmental risks of microplastics. However, more research is needed to be done to
172 evaluate the prospective toxicity of bio-based plastics by using other potential endpoints.

173

174

175 **Acknowledgments**

176 We thank the Mickaël Croyal and the Corsaire CRNH mass spectrometry platform and the
177 ThalassOMICS platform, both from BiogenOuest, for helping us with the FIA-HRMS
178 analysis.

179 Thank you also to Romaric Moncrieffe for the English editing.

180 Great thanks to the SMPC laboratory. S. Benali and R. Mincheva acknowledge supports by
181 the European Community (FEDER) for general support in the frame of LCFM-BIOMAT.

182 J.M.R is Chercheur Qualifié from Belgian FNRS agency.

183

184

185 **References**

186 Adhikari, D., Mukai, M., Kubota, K., Kai, T., Kaneko, N., Araki, K. S. & Kubo, M., (2016).
187 Degradation of Bioplastics in Soil and Their Degradation Effects on Environmental
188 Microorganisms. *Journal of Agricultural Chemistry and Environment*, 5: 23-34.

189 Akaishi, F.M., St-Jean, S.D., Bishay, F., Clarke, J., Rabitto, I. da S., de Oliveira Ribeiro C.A.,
190 (2007). Immunological responses, histopathological finding and disease resistance of blue
191 mussel (*Mytilus edulis*) exposed to treated and untreated municipal wastewater. *Aquatic*
192 *Toxicology*, 82(1) : 1-14.

193 Ames, B. N., Shigenaga, M. K. & Hagen T. M., (1993). Oxidants, antioxidants, and the
194 degenerative diseases of aging. *Proceedings of the National Academy of Sciences of the*
195 *United States of America*, 90: 7915-7922.

196 Arthur, C., Bamford, H. & Baker, J., (2009) *Proceedings of the International Research*
197 *Workshop on the Occurrence, Effects and Fate of Microplastic Marine Debris*. Sept 9-11,
198 2008. NOAA Technical Memorandum NOS-OR&R-30

199 Auras, R., Harte, B. & Selke, S., (2004). An overview of polylactides as packaging materials.
200 *Macromolecular Bioscience*, 4: 835-864.

201 Avio, C. G., Gorbi, S., Milan, M., Benedetti, M., Fattorini, D., d'Errico, G., Pauletto, M.,
202 Bargelloni, L. & Regoli, F., (2015). Pollutants bioavailability and toxicological risk from
203 microplastics to marine mussels. *Environmental Pollution*. 198: 211–222.

204 Barnes, D. K. A., Galgani, F., Thompson, R. C. & Barlaz, M., (2009). Accumulation and
205 fragmentation of plastic debris in global environments. *Philosophical Transactions of the*
206 *Royal Society B*, 364: 1985–1998.

- 207 Barret, A. J., & Heath, M., (1977). Lysosomes: a laboratory handbook. Elsevier, Amsterdam,
208 pp. 19–145.
- 209 Beauchamp, C., & Fridovich, I., (1971). Superoxide dismutase: Improved assays and an assay
210 applicable to acrylamide gels. *Journal of Analytical Biochemistry*, 44: 276-287.
- 211 Bertrand, S., Schumpp, O., Bohni, N., Bujard, A., Azzollini, A., Monod, M., Gindro, K. &
212 Wolfender, J. L., 2013. Detection of metabolite induction in fungal co-cultures on solid media
213 by high-throughput differential ultra-high pressure liquid chromatography-time-of-flight mass
214 spectrometry fingerprinting. *Journal of Chromatography A*, 1292, 219-228
- 215 Boerger, C. M., Lattin, G. L., Moore, S. L. & Moore, C. J., (2010). Plastic ingestion by
216 planktivorous fishes in the North Pacific Central Gyre. *Marine Pollution Bulletin*, 60: 2275-
217 2278.
- 218 Borrelle, S. B., Ringma, J., Lavender Law, K., Monnahan, C. C., Lebreton, L., McGivern, A.,
219 Murphy, E., Jambeck, J., Leonard, G. H., Hilleary, M. A., Eriksen, M., Possingham, H. P., De
220 Frond, H., Gerber, L. R., Polidoro, B., Tahir, A., Bernard, M., Mallos, N., Barnes, M.,
221 Rochman, C. M., (2020). Predicted growth in plastic waste exceeds efforts to mitigate plastic
222 pollution. *Science*, 369: 1515-1518
- 223 Bouchard, B., Gagné, F., Fortier, M., Fournier, M. (2009). An in-situ study of the impacts of
224 urban wastewater on the immune and reproductive systems of the freshwater mussel *Elliptio*
225 *complanata*. *Comparative Biochemistry and Physiology - Part C: Toxicology and*
226 *Pharmacology*, 150 (2): 132-40.
- 227 Bradford, M., (1976). A rapid and sensitive method for the quantitation of microgram
228 quantities of protein utilizing the principle of protein-dye binding. *Analytical Biochemistry*,
229 72: 248-254.
- 230 Browne, M. A., Dissanayake, A., Galloway, T.S., Lowe, D.M. & Thompson, R. C., (2008)
231 Ingested microscopic plastic translocates to the circulatory system of the mussel, *Mytilus*
232 *edulis* (L). *Environmental Science and Technology*, 42: 5026–5031
- 233 Bundy, J. G., Davey, M. P., & Viant, M. R., (2009). Environmental metabolomics: A critical
234 review and future perspectives. *Metabolomics*, 5: 3-21.
- 235 Cajaraville, M.P., Bebianno, M.J., Blasco, J., Porte, C., Sarasquete, C. & Viarengo, A.,
236 (2000). The use of biomarkers to assess the impact of pollution in coastal environments of the
237 Iberian Peninsula: a practical approach. *Science of the Total Environment*, 247: 295-311.
- 238 Canesi, L., Ciacci, C., Bergami, E., Monopoli, M.P., Dawson, K.A., Papa, S., Canonico, B. &
239 Corsi, I., (2015). Evidence for immunomodulation and apoptotic processes induced by
240 cationic polystyrene nanoparticles in the hemocytes of the marine bivalve *Mytilus* spp.
241 *Marine Environmental Research*, 111: 34–40.
- 242 Carpenter, E. J. & Smith, K., (1972). Plastics on the Sargasso Sea surface. *Science*, 175:
243 1240-1241.

- 244 Carpenter, E. J., Anderson, S. J., Harvey, G. R., Miklas, H. P. & Peck, B. B., (1972)
245 Polystyrene spherules in coastal waters. *Science*, 178: 749-750.
- 246 Claiborne, A., (1985). Catalase activity. In: *Handbook of methods for oxygen radical research*
247 (R. A. Greenwald, Ed). Boca Raton, FL, pp. 283-284.
- 248 Cubero-Leon, E., Minier, C., Rotchell, J. M. & Hill, E. M., (2012). Metabolomic analysis of
249 sex specific metabolites in gonads of the mussel, *Mytilus edulis*. *Comparative Biochemistry*
250 *and Physiology Part D: Genomics and Proteomics*, 7: 212-219.
- 251 Dauberschmidt, C., Dietrich, D.R. & Schlatter, C., (1996). Toxicity of organophosphorus
252 insecticides in the zebra mussel, *Dreissena polymorpha* P. *Archives Environmental*
253 *Contamination and Toxicology*, 30: 37-378.
- 254 Davies, K. J. A., (1995). Oxidative stress: the paradox of aerobic life. *Biochemical Society*
255 *Symia*, 61: 1-31.
- 256 De Witte, B., Devriese, L., Bekaert, K., Hoffman, S., Vandermeersch, G., Cooreman, K. &
257 Robbens, J., (2014). Quality assessment of the blue mussel (*Mytilus edulis*): comparison
258 between commercial and wild types. *Marine Pollution Bulletin*, 85: 146–155.
- 259 Desforges, J.P.W., Galbraith, M., Dangerfield, N. & Ross, P.S., (2014). Widespread
260 distribution of microplastics in subsurface seawater in the NE Pacific Ocean. *Marine Pollution*
261 *Bulletin*, 79: 94-99.
- 262 Détrée, C. & Gallardo-Escarate, C. (2017). Polyethylene microbeads induce transcriptional
263 responses with tissue-dependent patterns in the mussel *Mytilus galloprovincialis*. *Journal of*
264 *Molluscan Studies*, 83, 220-225.
- 265 Détrée, C. & Gallardo-Escarate, C. (2018). Single and repetitive microplastics exposures
266 induce immune system modulation and homeostasis alteration in the edible mussel *Mytilus*
267 *galloprovincialis*. *Fish and Shellfish Immunology*, 83 : 52-60.
- 268 Devriese, L. I., Van-de-Meulen, M. D. & Maes, T., (2015). Microplastic contamination in
269 brown shrimp (*Crangon crangon*, Linnaeus 1758) from coastal waters of the Southern North
270 Sea and Channel area. *Marine Pollution Bulletin*, 98: 179-187.
- 271 Dumas, T.; Boccard, J.; Gomez, E.; Fenet, H.; Courant, F., (2020). Multifactorial Analysis of
272 Environmental Metabolomic Data in Ecotoxicology: Wild Marine Mussel Exposed to WWTP
273 Effluent as a Case Study. *Metabolites*, 10, 269.
- 274 Ellman, G. L., Courtney, K. D., Andres, V. & Feather-Stone, R. M., (1961). *Journal of*
275 *Biochemistry Pharmacology*, 7: 88-95.
- 276 Ferreira, A. & Dolder, H., (2003). Cytochemical study of spermiogenesis and mature
277 spermatozoa in the lizard *Tropidurus itambere* (Reptilia, Squamata). *Acta Histochemistry*,
278 105: 339-352.

279 Flores-Valverde, A. M., & Hill, E. M., (2008). Methodology for profiling the steroid
280 metabolome in animal tissues using ultraperformance liquid chromatography-electrospray-
281 time-offlight mass spectrometry. *Analytical Chemistry*, 80: 8771–8779.

282 Galloway, T.S., Handy, R.D., (2003). Immunotoxicity of organophosphorous pesticides.
283 *Ecotoxicology*, 12: 344–363.

284 Garlotta, D., (2001). A literature review of Poly (Lactic Acid). *Journal of Polymers and*
285 *Environment*, 9: 63-84.

286 Giller, E. & Schwartz, J. H., (1971). Acetylcholinesterase in identified neurons of the
287 abdominal ganglion of *Aplysia californica*. *Journal of Neurophysiology*, 34: 108-115.

288 Goldberg, E.D., (1995). The health of the oceans—a 1994 update. *Chemical Ecology*, 10: 3-8.

289 Goldberg, E.D., (1997). Plasticizing the seafloor: an overview. *Environmental Technology*,
290 18: 195–202.

291 Gomes, T. S., Visconte, L; L. Y., Pacheco, E. B. A. V., (2019). Life Cycle Assessment of
292 Polyethylene Terephthalate Packaging: An Overview. *Journal of Polymers and the*
293 *Environment*, 27: 533-548.


294 González -Soto et al., (2019). Impacts of dietary exposure to different sized polystyrene
295 microplastics alone and with sorbed benzo[a]pyrene on biomarkers and whole organism
296 responses in mussels *Mytilus galloprovincialis*. *Science of The Total environment*, 684: 548-
297 566.

298 Gorman, M. L., (1993). Communications from the mammal society-No. 67. *Journal of*
299 *Zoology*, 231.

300 Habig, W. H., Pabst, M. J. & Jakoby, W. B., (1974). Glutathione-S-transferases first
301 enzymatic step in mercapturic acid formation. *Journal of Biology and Chemistry*, 249: 7130-
302 7139.

303 Haider, T. P., Völker, C., Kramm, J., Landfester, K. & Wurm, F. R., (2019). Plastics of the
304 Future? The Impact of Biodegradable Polymers on the Environment and on Society.
305 *Angewandte Chemie International Edition*, 58: 50-62.

306 Halliwell, B. & Gutteridge, J. M. C., (1999). *Free Radicals in Biology and Medicine*, third ed.
307 Oxford University Press, Oxford.

308 Hamad, K., Kaseem, M., Ko, Y. G. & Deri, F., (2014). Biodegradable polymer blends and
309 comites: An overview. *Polymer Science Series A*, 56: 812-829. 

310 Hannun, Y. A. & Obeid, L. M., (2008). Principles of bioactive lipid signaling: lessons from
311 sphingolipids. *Nature Reviews Molecular Cell Biology*, 9:139.

- 312 Hansen, J., (1990). Draft ition statement on plastic debris in marine environments. Fisheries,
313 15: 16-17.
- 314 Harper, P. C. & Fowler, J. A., (1987) Plastic pellets in New Zealand storm-killed prions
315 (*Pachyptila* spp.), 1958-1977. Notornis, 34: 65-70.
- 316 Heyer, C.B., Kater, S.B. & Karlsson, U.L., (1973). Neuromuscular systems in mollusks.
317 American Zoologist, 13: 247-270.
- 318 Hines, A., Staff, F. J., Widdows, J., Compton, R. M., Falciani, F., & Viant, M. R., (2010).
319 Discovery of metabolic signatures for predicting whole organism toxicology. Toxicological
320 Sciences, 115, 369–378
- 321 Hsu, F.-F., (2018). Mass spectrometry-based shotgun lipidomics – a critical review from the
322 technical point of view. Anal. Bioanal. Chem., 410, 6387-6409.
- 323 Ishida, N., Saitoh, S., Ohnishi, T., Tokuhiko, K., Nagamori, E., Kitamoto, K. & Takahashi, H.,
324 (2006). Metabolic Engineering of *Saccharomyces cerevisiae* for Efficient Production of Pure
325 L- (+)-Lactic Acid. Applied Biochemistry and Biotechnology, 131: 795–807.
- 326 Izagirre, U., Ruiz, P. & Marigómez, I., (2009). Time-course study of the early lysosomal
327 responses to pollutants in mussel digestive cells using acid phosphatase as lysosomal marker
328 enzyme. Comparative Biochemistry and Physiology C, 149: 587-597.
- 329 Jayakumar, P., Jothivel, N. & Paul, V. N., (2008). Heavy metals induced alterations in the
330 acid phosphatase activity in the edible freshwater mussel *Lamellidens marginalis* (Lamarck).
331 The Internet Journal of Toxicology, 5.
- 332 Jeftic, L., Sheavly, S., Adler, E. (2009). Meith, N. Marine litter: a global challenge; UNEP:
333 Nairobi, 232 pp.
- 334 Jones, O. A. H., Dondero, F., Viarengo, A., & Griffin, J. L. (2008). Metabolic profiling of
335 *Mytilus galloprovincialis* and its potential applications for pollution assessment. Marine
336 Ecology Progress Series, 369: 169-179.
- 337 Kaseem, M., Hamad, K. & Deri, F., (2012). Thermoplastic starch blends: A review of recent
338 works. Polymer Science Series A, 54: 165-176.
- 339 Kind, T., Liu, K. H., Lee, D.Y., DeFelice, B., Meissen, J. K., Fiehn, O., (2013). LipidBlast in
340 silico tandem mass spectrometry database for lipid identification. Nature Methods, 10: 755-
341 758
- 342 Kinjo, A., Mizukawa, K., Takada, H. and Inoue, K., (2019). Size-dependent elimination of
343 ingested microplastics in the Mediterranean mussel *Mytilus galloprovincialis*. Marine
344 Pollution Bulletin, 149: 110512.
- 345 Klaine, S. J., Koelmans, A. A., Horne, N., Carley, S., Handy, R. D., Kapustka, L., Nowack,
346 B., von der Kammer, F. (2012). Paradigms to Assess the Environmental Impact of
347 Manufactured Nanomaterials. Environmental Toxicology and Chemistry, 31: 3-14.

- 348 Koehler, A., Marx, U., Broeg, K., Bahns, S. & Bressling, J., (2008). Effects of nanoparticles
349 in *Mytilus edulis* gills and hepatopancreas e a new threat to marine life? Marine
350 Environmental Research, 66: 12-14.
- 351 Koehler, A., Wahl, E. & Soeffker, K., (2002). Functional and morphological changes of
352 lysosomes as prognostic biomarkers of toxic liver injury in a marine flatfish (*Platichthys*
353 *flesus* L.). Environmental Toxicology Chemistry, 21: 2434-2444.
- 354 Lackner, R., (1998). Oxidative stress. In fish by environmental pollutants. T. Braunbeck, D.E.
355 Hinton, B. Streit (Eds.), Fish Ecotoxicology, Birkhauser Verlag, Basel, 203-224.
- 356 Laist, D.W., (1987). Overview of the biological effects of lost and discarded plastic debris in
357 the marine environment. Marine Pollution Bulletin, 18: 319-326.
- 358 Lau, W. W. Y., Shiran, Y., Bailey, R. M., Cook, E., Stuchtey, M. R., Koskella, J., Velis, C. A.,
359 Godfrey, L., Boucher, J., Murphy, M. B., Thompson, R. C., Jankowska, E., Castillo Castillo,
360 A., Pilditch, T. D., Dixon, D., Koerselman, L., Kosior, E., Favoino, E., Gutberlet, J., Baulch,
361 S., Atreya, M. E., Fischer, D., He, K. K., Petit, M. M., Sumaila, U. R., Neil, E., Bernhofen, M.
362 V., Lawrence, K., Palardy, J. E., (2020) Evaluating scenarios toward zero plastic pollution.
363 Science, 369 (6510). pp. 1455-1461. ISSN 0036-8075.
- 364 Li, J., Qu, X., Su, L., Zhang, W., Yang, D., Kolandhasamy, P., Li, D. & Shi, H., (2016).
365 Microplastics in mussels along the coastal waters of China. Environmental Pollution, 214:
366 177-184.
- 367 Li, J., Yang, D., Li, L., Jabeen, K. & Shi, H., (2015). Microplastics in commercial bivalves
368 from China. Environmental Pollution, 207: 190-195.
- 369 Livingstone, D. R., (2001). Contaminant-stimulated reactive oxygen species production and
370 oxidative damage in aquatic organisms. Marine Pollution Bulletin, 42: 656-666.
- 371 Lowe, D. W., Moore, M. N. & Evans, B. M., (1992). Contamination impact on interactions of
372 molecular probes with lysosomes in living hepatocytes from dab *Limanda limanda*. Marine
373 Ecology Progress Series, 91: 135-140.
- 374 Lusher, A. L., McHugh, M. & Thompson, R. C., (2013). Occurrence of microplastics in the
375 gastrointestinal tract of pelagic and demersal fish from the English Channel. Marine Pollution
376 Bulletin, 67: 94-99.
- 377 Magni, S., Gagné, F., André, C., Torre, C. D., Auclair, J., Hanana, H., Parenti, C. C.,
378 Bonasoro, F., Binelli, A., (2018). Evaluation of uptake and chronic toxicity of virgin
379 polystyrene microbeads in freshwater zebra mussel *Dreissena polymorpha* (Mollusca:
380 Bivalvia). Science of Total Environment. 631-631: 778-788.
- 381 Mathalon, A. & Hill, P., (2014). Microplastic fibers in the intertidal ecosystem surrounding
382 Halifax Harbor, Nova Scotia. Marine Pollution Bulletin, 81: 69-79.

- 383 Miracle, A. L. & Ankley, G. T., (2005) Ecotoxicogenomics: linkages between exure and
384 effects in assessing risks of aquatic contaminants to fish. *Reproductive Toxicology* 19: 321–
385 326.
- 386 Moore, M. N., (1985). Cellular responses to pollutants. *Marine Pollution Bulletin*, 16:
387 134–139.
- 388 Moore, M. N., (1988). Cytochemical responses of the lysosomal system and NADPH-
389 ferrihemoprotein reductase in molluscan digestive cells to environmental and experimental
390 exure to xenobiotics. *Marine Ecology Progress Series*, 46: 81–89.
- 391 Moore, M. N., (1976). Cytochemical demonstration of latency of lysosomal hydrolases in the
392 digestive cells of the common mussel, *Mytilus edulis*, and changes induced by thermal stress.
393 *Cell Tissue Research*, 175: 279-287.
- 394 Moore, C. J. (2008). Synthetic polymers in the marine environment: A rapidly increasing,
395 long-term threat. *Environmental Research*, 108: 131-139.
396
- 397 Moore, M. N., Bubel, A. & Lowe, D. M., (1980a). Cytology and cytochemistry of the
398 pericardial gland cells of *Mytilus edulis* and their lysosomal response to injected horseradish
399 peroxidase and anthracene. *Journal of Marine Biology*, 60: 135-149.
- 400 Moore, M. N., Koehn, R. K. & Bayne, B. L., (1980b). Leucine aminopeptidase (aminopep-
401 tidase-I), N-acetyl-hexosaminidase and lysosomes in the mussel, *Mytilus edulis* L., in
402 response to salinity changes. *Journal of Experimental Zoology*, 214: 239-249.
- 403 Moore, M. N., Lowe, D. M. & Koehler, A., (2004). Biological Effects of Contaminants:
404 Measurements of Lysosomal Membrane Stability. In: *ICES Techniques in Marine*
405 *Environmental Sciences (TIMES)*, vol. 36. ICES, Copenhagen, p. 31.
- 406 Murray, F. & Cowie, P. R., (2011). Plastic contamination in the decapod crustacean *Nephrops*
407 *norvegicus* (Linnaeus, 1758). *Marine Pollution Bulletin*, 62: 1207-1217.
- 408 Nakatsuka, T., (2011). Polylactic Acid-Coated Cable. *Fujikura Technical Review*, 40: 39-46.
- 409 Navarro, E., Iglesias, J. I. P., Pérez Camacho, A., Labarta, U. (1996). The effect of diets of
410 phytoplankton and suspended bottom material an feeding and absorption of raft mussels
411 (*Mytilus galloprovincialis* Lmk). *Journal of Experimental Marine eBiology and Ecology*, 198:
412 175-189.
- 413 Nott, J. A., Moore, M. N., Mavin, L. J. & Ryan, K. P., (1985). The fine structure of lysosomal
414 membranes and endoplasmic reticulum in the digestive cells of *Mytilus edulis* exed to
415 anthracene and phenanthrene. *Marine Environmental Research*, 34: 226-229.
- 416 Oliveira, P., Barboza, L.G.A., Branco, V., Figueiredo, N., Carvalho, C., Guilhermino., L.,
417 (2018). Effects of microplastics and mercury in the freshwater bivalve *Corbicula fluminea*
418 (Müller, 1774): filtration rate, biochemical biomarkers and mercury bioconcentration.
419 *Ecotoxicology Environment and Safety*, 164: 155-163.

420 Oliveira, M., Ribeiro, A., Hylland, K. & Guilhermino, L. (2013). Single and combined effects
421 of microplastics and pyrene on juveniles (0+ group) of the common goby *Pomatoschistus*
422 *microps* (Teleostei, Gobiidae). *Ecological Indicators*, 34: 641-647.

423 Palsikowski, P. A., Roberto, M. M., Sommaggio, L. R. D., Souza, P. M. S., Morales, A. R. &
424 Marin-Morales, M. A., (2018). Ecotoxicity Evaluation of the Biodegradable Polymers PLA,
425 PBAT and its Blends Using *Allium cepa* as Test Organism. *Journal of polymers and the*
426 *environment*, 26: 938-945.

427 Paul-Pont, I., Lacroix, C., González Fernández, C., Hégaret, H., Lambert, C., Le Goïc, N.,
428 Frère, L., Cassone, A. L., Sussarellu, R., Fabioux, C., Guyomarch, J., Albentosa, M., Huvet,
429 A. & Soudant, P., (2016). Exposure of marine mussels *Mytilus* spp. to polystyrene
430 microplastics: toxicity and influence on fluoranthene bioaccumulation. *Environmental*
431 *Pollution*, 216, 724–737.

432 Paul-Pont, I., Tallec, K., Gonzalez-Fernandez, C., Lambert, C., Vincent, D., Mazurais, D.,
433 Zambonino-Infante, J-L., Brotons, G., Lagarde, F., Fabioux, C., Soudant, P., Huvet, A.
434 (2018). Constraints and Priorities for Conducting Experimental Exposures of Marine
435 Organisms to Microplastics. *Frontiers in Marine Sciences*, 5: 252

436 Phuong, N. N., Zalouk-Vergnoux, A., Poirier, L., Kamari, A., Chatel, A., Mouneyrac, C &
437 Lagarde, F., (2016). Is there any consistency between the microplastics found in the field and
438 those used in laboratory experiments? *Environmental Pollution*, 211: 111-123.

439 Plastics Europe. (2019). *Plastics-the Facts 2017*. An analysis of European plastics production,
440 demand and waste data. Retrieved from: www.plasticseurope.org

441 Pluskal, T., Castillo, S., Villar-Briones, A. & Oresic, M., (2010). MZmine 2: Modular
442 framework for processing, visualizing, and analyzing mass spectrometry-based molecular
443 profile data *BMC Bioinformatics*, 11, 395

444 Rainieri, S., Conlledo, N., Larsen, B. K., Granby, K. & Barranco, A., (2018). Combined
445 effects of microplastics and chemical contaminants on the organ toxicity of zebrafish (*Danio*
446 *rerio*). *Environmental Research*, 162: 135-143.

447 Rebolledo, E. L. B., van Franeker, J. A., Jansen, O. E. & Brasseur, S. M. J. M., (2013). Plastic
448 ingestion by harbor seals (*Phoca vitulina*) in The Netherlands. *Marine Pollution Bulletin*, 67:
449 200-202.

450 Regoli, F. & Giuliani, M.E., (2014). Oxidative pathways of chemical toxicity and oxidative
451 stress biomarkers in marine organisms. *Marine Environmental Research*, 93: 106-117.

452 Revel, M., Lagarde, F., Perrein-Ettajani, H., Bruneau, M., Akcha, F., Sussarellu, R., Rouxel
453 J., Costil, K., Decottignies, P., Cognie, B., Châtel, A., & Mouneyrac, C., (2019). Tissue-
454 Specific Biomarker Responses in the Blue Mussel *Mytilus* spp. Exposed to a Mixture of
455 Microplastics at Environmentally Relevant Concentrations. *Frontiers in Environmental*
456 *Science*, 7: 33.

457 Ribeiro, F., Garcia, A. R., Pereira, B. P., Fonseca, M., Mestre, N. C., Fonseca, T. G., Ilharco,
458 L. M. & Bebianno, M. J., (2017). Microplastics effects in *Scrobicularia plana*. Marine
459 Pollution Bulletin, 122, 379–391.

460 Rickwood, C. J. & Galloway, T. S., (2004). Acetylcholinesterase inhibition as a biomarker of
461 adverse effect A study of *Mytilus edulis* exed to the priority pollutant chlorfenvinphos.
462 Aquatic Toxicology, 67: 45-56.

463 Rossi, G., Barnoud, J. & Monticelli, L. (2014). Polystyrene nanoparticles perturb lipid
464 membranes. The Journal of Physical Chemistry Letters, 5: 241-246.

465 Ryan, P.G., (1987). The origin and fate of artefacts stranded on islands in the African sector
466 of the Southern Ocean. Environmental Conservation, 14: 341–346.

467 Sarasquete, M. C., Gonzales de Canales, M. L. & Gimeno, S. (1992). Comparative histo-
468 pathological alterations in the digestive gland of marine bivalves exed to Cu and Cd.
469 European Journal of Histochemistry, 36: 223-232.

470 Schneiderman, D. K. & Hillmyer, M. A., (2017). 50th Anniversary Perspective: There Is a
471 Great Future in Sustainable Polymers. Macromolecules, 50: 3733-3749.

472 Sinclair, R. G., (1996). The case for polylactic acid as a commodity packaging plastic. Journal
473 of Macromolecular Science-Pure and Applied Chemistry A33, 5: 585–597.

474 Soreq, H. & Seidman, S., (2001). Acetylcholinesterase-new roles for an old actor. Nature
475 Neuroscience, 2: 295-303.

476 Southam, A. D., Lange, A., Al-Salhi, R., Hill, E. M., Tyler, C. R. & Viant, M. R. (2014).
477 Distinguishing between the metabolome and xenobiotic exome in environmental field
478 samples analysed by direct-infusion mass spectrometry based metabolomics and lipidomics.
479 Metabolomics, 10: 1050-1058.

480 Srivatsan, M., (1999). Effects of organophosphates on cholinesterase activity and neurite
481 regeneration in *Aplysia*. Chemico-Biological Interactions, 119: 371–378.

482 Tallec, K, Huvet, A., Di Poi, C., Gonzalez-Fernandez, C., Lambert, C., Petton, B., Le Goïc,
483 N., Berchel, M., Soudant, P. & Paul-Pont, I. (2018). Nanoplastics impaired oyster free living
484 stages, gametes and embryos. Environmental Pollution, 242: 1226-1235.

485 Thompson, R. C., (2006). Plastic debris in the marine environment: Consequences and
486 solutions. In J. C. Krause, H. Nordheim, & S. Bräger (Eds.), Marine nature conservation in
487 Europe (107–115). Stralsund, Germany: Bundesamt für Naturschutz.

488 Thompson, R. C., (2006). Plastic debris in the marine environment: consequences and
489 solutions. In: Krause, J. C., von Nordheim, H., Brager, S. (Eds.), Marine Nature Conservation
490 in Europe. Federal Agency for Nature Conservation, Stralsund, Germany, pp. 107-115.

491 Trestrail, C., Nugegoda, D., Shimeta, J. (2020). Invertebrate responses to microplastic
492 ingestion: Reviewing the role of the antioxidant system. *Science of The Total Environment*,
493 734: 138559.

494 Valavanidis, A., Vlahogianni, T., Dassenakis, M. & Scoullou, M., (2006). Molecular
495 biomarkers of oxidative stress in aquatic organisms in relation to toxic environmental
496 pollutants. *Ecotoxicology and Environmental Safety*, 64: 178-189.

497 Van Aggelen, G., Ankley, G. T., Baldwin, W. S., Bearden, D. W., Benson, W. H., Chipman,
498 J. K., Collette, T. W., Craft, J. A., Denslow, N. D., Embry, M. R., Falciani, F., George, S. G.,
499 Helbing, C. C., Hoekstra, P. F., Iguchi, T., Kagami, Y., Katsiadaki, I., Kille, P., Liu, L., Lord,
500 P.,G., McIntyre, T., O'Neill, A., Osachoff, H., Perkins, E. J., Santos, E. M., Skirrow, R.C.,
501 Snape, J. R., Tyler, C. R., Versteeg, D., Viant, M. R., Volz, D. C., Williams, T. D. & Yu, L.,
502 (2010). Integrating omic technologies into aquatic ecological risk assessment and
503 environmental monitoring: Hurdles, achievements, and future outlook. *Environmental Health*
504 *Perspectives*, 118, 1–5.

505 Van Cauwenberghe, L. & Janssen, C. R., (2014). Microplastics in bivalves cultured for
506 human consumption. *Environmental Pollution*, 193: 65-70.

507 Van Cauwenberghe, L., Claessens, M., Vandegehuchte, M.B. & Janssen, C.R., (2015).
508 Microplastics are taken up by mussels (*Mytilus edulis*) and lugworms (*Arenicola marina*)
509 living in natural habitats. *Environmental pollution*, 199: 10-7.

510 Van den Berg, R. A.; Hoefsloot, H. C.; Westerhuis, J. A.; Smilde, A. K.; van der Werf, M. J.,
511 (2006). Centering, scaling, and transformations: improving the biological information content
512 of metabolomics data. *BMC Genomics*, 7, 142.

513 Versteeg, D. J. & Giesy, J. P., (1985). Lysosomal enzyme release in the bluegill sunfish
514 (*Lepomis macrochirus* Rafinesque) exed to cadmium. *Archives of Environmental*
515 *Contamination and Toxicology*, 14: 631-640.

516 Viarengo, A., Moore, M. N., Mancinelli, G., Mazzucotelli, A. & Pipe, R. K., (1985).
517 Significance of metallothioneins and lysosomes in cadmium toxicity and homeostasis in the
518 digestive gland cells of mussels exed to the metal in presence or absence of phenanthrene.
519 *Marine Environmental Research*, 17: 184-187.

520 Viarengo, A., Lowe, D., Bolognesi, C., Fabbri, E. & Koehler, A., (2007). The use of
521 biomarkers in biomonitoring: A 2-tier approach assessing the level of pollutant-induced stress
522 syndrome in sentinel organisms. *Comparative Biochemistry Physiology C*, 146: 281–300.

523 Von Moos, N., Burkhardt-Holm, P. & Kohler, A., (2012). Uptake and effects of microplastics
524 on cells and tissue of the blue mussel *Mytilus edulis* L. after an experimental exure.
525 *Environmental Science and Technology*, 46: 11327-11335.

526 Want, E. J., Wilson, I. D., Gika, H., Theodoridis, G., Plumb, R.S., Shockcor, J., Holmes, E. &
527 Nicholson, J. K., 2010. Global metabolic profiling procedures for urine using UPLC-MS.
528 Nature Protocols. 5, 1005-1018.

529 Webb, S., Gaw, S., Marsden, I. D. and McRae, M. K., (2020). Biomarker responses in New
530 Zealand green-lipped mussels *Perna canaliculus* exposed to microplastics and triclosan.
531 Ecotoxicology and Environmental Safety. 201: 110871

532 Weber, A., Scherer, C., Brennholt, N., Reifferscheid, G. & Wagner, M., (2018). PET
533 microplastics do not negatively affect the survival, development, metabolism and feeding
534 activity of the freshwater invertebrate *Gammarus pulex*. Environmental Pollution. 234, 181–
535 189.

536 Wegner, A., Besseling, E., Foekema, E. M., Kamermans, P. & Koelmans, A. A., (2012).
537 Effects of nanopolystyrene on the feeding behavior of the blue mussel (*Mytilus edulis* L.).
538 Environmental Toxicology and Chemistry, 31: 2490-2497.

539 Wright, S. L., Thompson, R. C. & Galloway, T. S., (2013). The physical impacts of
540 microplastics on marine organisms: a review. Environmental Pollution, 178: 483-492.

541 Wu, R. S. S., Siu, W. H. L. & Shin, P. K. S., (2005). Induction, adaptation and recovery of
542 biological responses: Implications on environmental monitoring. Marine Pollution Bulletin,
543 51: 623-634.

544

545