



HAL
open science

The Analytic Stockwell Transform and its Zeros

Ali Moukadem, Barbara Pascal, Jean-Baptiste Courbot, Nicolas Juillet

► **To cite this version:**

Ali Moukadem, Barbara Pascal, Jean-Baptiste Courbot, Nicolas Juillet. The Analytic Stockwell Transform and its Zeros. 2024. hal-04652227v1

HAL Id: hal-04652227

<https://hal.science/hal-04652227v1>

Preprint submitted on 18 Jul 2024 (v1), last revised 25 Jul 2024 (v2)

HAL is a multi-disciplinary open access archive for the deposit and dissemination of scientific research documents, whether they are published or not. The documents may come from teaching and research institutions in France or abroad, or from public or private research centers.

L'archive ouverte pluridisciplinaire **HAL**, est destinée au dépôt et à la diffusion de documents scientifiques de niveau recherche, publiés ou non, émanant des établissements d'enseignement et de recherche français ou étrangers, des laboratoires publics ou privés.



Distributed under a Creative Commons Attribution 4.0 International License

The Analytic Stockwell Transform and its Zeros[†]

Ali Moukadem^a, Barbara Pascal^b, Jean-Baptiste Courbot^a, Nicolas Juillet^a

^a*IRIMAS UR 7499, Université de Haute-Alsace, Mulhouse, France*

^b*Nantes Université, École Centrale Nantes, CNRS, LS2N, UMR 6004, Nantes, F-44000, France*

Abstract

A recent original line of research in time–frequency analysis has shifted the interest in energy maxima toward zeros. Initially motivated by the intriguing uniform spread of the zeros of the spectrogram of white noise, it has led to fruitful theoretical developments combining probability theory, complex analysis and signal processing. In this vein, the present work proposes a characterization of the zeros of the Stockwell Transform of white noise, which consists in an hybrid time–frequency multiresolution representation. First of all, an analytic version of the Stockwell Transform is designed. Then, analyticity is leveraged to establish a connection with the hyperbolic Gaussian Analytic Function, whose zero set is invariant under the isometries of the Poincaré disk. Finally, the theoretical spatial statistics of the zeros of the hyperbolic Gaussian Analytic Function and the empirical statistics of the zeros the Analytic Stockwell Transform of white noise are compared through intensive Monte Carlo simulations, supporting the established connection. A publicly available documented Python toolbox accompanies this work.

Keywords: Time–frequency analysis, Stockwell transform, Gaussian Analytic Functions, Point processes, Hyperbolic geometry

1. Introduction

Time–frequency analysis is a cornerstone of nonstationary signal processing [1, 2, 3]. Crucially, contrary to the Fourier spectrum describing the overall



[†] For the purpose of Open Access, a CC-BY public copyright licence has been applied by the authors to the present document and will be applied to all subsequent versions up to the Author Accepted Manuscript arising from this submission.

frequency content but losing time localization, time–frequency representations aim at accounting for both the temporal dynamics and the time-varying frequency content of a signal. Among the most widely used time–frequency representations are the *spectrogram*, obtained as the squared modulus of the Short-Time Fourier Transform [1, 3], and the time–scale *scalogram*, which is the squared modulus of the Wavelet Transform [4]. These joint representations appeared particularly suited to analyze physical phenomena as diverse as bat echolocation [5], earthquakes [6] and gravitational waves [7].

The search for *analytic* signal transforms is a long-standing problem both in signal processing and harmonic analysis [8, 9, 10, 11, 12, 13] as analyticity is a key property in phase retrieval problems and phaseless reconstruction [9, 10, 11]. Recently, this interest has been strongly renewed by an unorthodox research path which emerged at the interface between time–frequency analysis and stochastic geometry. This novel line of research consists in shifting the historical interest in representation maxima toward *zeros*, which can be seen as “silent” points in the time–frequency plane [14]. Notably, the seminal works [14, 15] have shed light on the remarkably even distribution of the zeros of the spectrogram *white noise*. Not only this observation received a rigorous mathematical explanation [16] elegantly combining complex analysis and probability theory, but the established link between time–frequency analysis and random complex analytic functions opened up a novel line of research in the theory of signal representations and led to the characterization of the zeros of many other signal representations, among which the Wavelet Transform [17, 18, 16, 12]. Further, this fruitful connection has even motivated the design of new representations, and in particular of discrete representations with desirable algebraic properties [12, 13], as well as original contributions in harmonic analysis [19].

The present work aims at completing these studies by characterizing the zeros of the time–frequency *Stockwell Transform* [20], which genuinely hybridizes the Short-Time Fourier Transform and the Wavelet Transform so as to provide an original multi-resolution analysis with a local phase having an absolute reference [20, 21, 22]. The motivation for the introduction of the Stockwell transform was to overcome a major practical drawback of the Short-Time Fourier Transform: for low (resp. high) frequency the frequency (resp. time) resolution is coarse, impairing precise localization in the time-frequency plane. To that aim the historical design relies on a Gaussian analysis window [20], whose width is varied as a function of frequency so as to produce a higher frequency resolution at lower frequencies and a

higher time resolution at higher frequencies while preserving the absolute reference of the phase, which is lost when using the Wavelet Transform. Several extensions of the Stockwell Transform have been proposed in the literature [23, 24, 25, 26, 27], to cite but a few. The main objective of these extensions is to enable to adapt closely to the characteristics of the analyzed signal and to the time–frequency patterns of interest.

Thanks to its solid theoretical ground, high versatility and ease of interpretation, the Stockwell Transform has progressively gained popularity not only in signal processing [28, 29, 30], but also in applied mathematics [22, 31] and mathematical physics [32, 33].

The main contributions of the present work are, first, to construct an *Analytic* Stockwell Transform; second, thanks to a rigorous construction of an adapted continuous white noise, to characterize the zeros of the Analytic Stockwell Transform of white noise by proving that they coincides with the zeros of the so-called *hyperbolic Gaussian Analytic Function* hence demonstrating that the zeros are invariant under isometries of the Poincaré disk; third, to provide numerical evidence supporting this connection by comparing through intensive Monte Carlo simulations the theoretical *pair correlation function* of the zeros of the hyperbolic Gaussian Analytic Function and the empirical pair correlation function of the zeros of the Analytic Stockwell Transform of white noise. In Section 2, after reminding the definition of the Generalized Stockwell Transform, the existence of an Analytic Stockwell Transform is proven by leveraging the intrinsic link between the Stockwell and Wavelet transforms. Then, the distribution of the zeros of the Analytic Stockwell Transform of white noise is characterized in Section 3, taking advantage of a well-suited construction of white noise and of a connection with Gaussian Analytic Functions. Finally, numerical experiments are implemented in Section 4, providing illustrations of the zero pattern of the Analytic Stockwell Transform and quantitative support to the results of Section 3 by systematically comparing the theoretical and empirical spatial statistics of zeros in hyperbolic geometry through intensive Monte Carlo simulations.

Notation. The set of real (resp. complex) numbers is denoted by \mathbb{R} (resp. \mathbb{C}), while the set of positive real numbers (resp. complex number with positive imaginary part) is denoted by \mathbb{R}_+ (resp. \mathbb{C}_+). The set of nonnegative (resp. positive) integers is denoted by \mathbb{N} (resp. \mathbb{N}^*). The Hilbert space of functions which are square-integrable with respect to the Lebesgue measure on \mathbb{R} equipped with the scalar product $\langle f, g \rangle = \int_{\mathbb{R}} f(t)\overline{g(t)} dt$ is denoted by $L^2(\mathbb{R})$. The space of integrable functions is denoted by $L^1(\mathbb{R})$. For

$f \in L^2(\mathbb{R}) \cap L^1(\mathbb{R})$, the *Fourier transform* of f , denoted by \widehat{f} , is defined as: $\forall \nu \in \mathbb{R}$, $\widehat{f}(\nu) = (2\pi)^{-1/2} \int_{\mathbb{R}} f(t)e^{-2\pi i\nu t} dt$. The standard *complex* Gaussian distribution of zero mean and unit variance is denoted by $\mathcal{N}_{\mathbb{C}}(0, 1)$. The closed disk of radius $R > 0$ is denoted by $\overline{\mathbb{B}}(0, R) = \{z \in \mathbb{C} : |z| < R\}$. For $\Lambda \subseteq \mathbb{C}$, the space of analytic functions on Λ is denoted by $\mathcal{A}(\Lambda)$.

2. The Analytic Stockwell Transform

First, the formal definition of the Generalized Stockwell Transform is reminded, as well as its interpretation as a covariant transform under the group generated by time translations, frequency modulations and scale dilatations. Then, connecting the Stockwell Transform to the Wavelet Transform and leveraging analyticity results obtained for Cauchy wavelet, an Analytic Stockwell Transform is constructed.

2.1. Preliminary: definition of the Generalized Stockwell Transform

Definition 1. Let $\varphi \in L^2(\mathbb{R})$ a finite energy window. The *Generalized Stockwell Transform* with analysis window φ of a finite energy signal, $f \in L^2(\mathbb{R})$, is defined as

$$S_{\varphi}f : \begin{cases} \mathbb{R} \times \mathbb{R}_+ & \rightarrow \mathbb{C} \\ (x, \xi) & \mapsto \xi \int_{-\infty}^{\infty} f(t) \overline{\varphi(\xi(t-x))} e^{-2\pi i t \xi} dt. \end{cases} \quad (1)$$

Remark 1. The seminal Stockwell transform introduced in [20] corresponds to the standard Gaussian analysis window $\varphi(t) = (2\pi)^{-1/2} e^{-t^2/2}$.

For any $x \in \mathbb{R}$, $\xi, \gamma \in \mathbb{R}_+$, let the *translation*, *modulation* and *dilatation* automorphisms of $L^2(\mathbb{R})$ be respectively defined as

$$\mathbf{T}_x h(t) = h(t-x); \quad \mathbf{M}_{\xi} h(t) = e^{-2\pi i \xi t} h(t-x); \quad \mathbf{D}_{\gamma} h(t) = \gamma h(\gamma t), \quad (2)$$

Then, the Generalized Stockwell Transform of Equation (1) can be interpreted as the decomposition of the signal onto the covariant family obtained by making the group generated by translations, modulations and dilatations acting on the analysis window, that is:

$$S_{\varphi}f(x, \xi) = \langle f, \mathbf{M}_{\xi} \mathbf{T}_x \mathbf{D}_{\xi} \varphi \rangle. \quad (3)$$

2.2. Existence of an Analytic Stockwell Transform

The design of an Analytic Stockwell Transform leverages the *Cauchy* wavelet, also referred to as the *Daubechies-Paul* wavelet in the literature [34].

Definition 2. Let $\beta \in \mathbb{R}$ be such that $\beta > 0$. The *Cauchy* wavelet of parameters β is defined as the unique function $\psi_\beta \in L^2(\mathbb{R})$ whose Fourier transform writes

$$\widehat{\psi}_\beta(\nu) = \begin{cases} \nu^\beta e^{-2\pi\nu} & \text{if } \nu \geq 0 \\ 0 & \text{otherwise.} \end{cases} \quad (4)$$

Remark 2. The condition $\beta > 0$ ensures the admissibility of the wavelet, i.e.,

$$\int_{\mathbb{R}} \left| \widehat{\psi}_\beta(\nu) \right|^2 \frac{d\nu}{|\nu|} < \infty \quad (5)$$

and that $\widehat{\psi}_\beta \in L^2(\mathbb{R})$. Then, the bijectivity of the Fourier transform from $L^2(\mathbb{R})$ to $L^2(\mathbb{R})$ yields the existence of a unique ψ_β satisfying (4).

Theorem 1. Let $\beta > 0$ and $\psi_\beta \in L^2(\mathbb{R})$ be the *Cauchy* wavelet of parameter β . Define the modulated *Cauchy* wavelet $\varphi_\beta(t) = \psi_\beta(t)e^{-2\pi it}$. For any finite energy signal $f \in L^2(\mathbb{R})$, there exists an analytic function on the unit disk $F : \mathbb{D} \rightarrow \mathbb{C}$, a conformal mapping $\vartheta : \mathbb{C}_+ \rightarrow \mathbb{D}$, and a smooth nonvanishing function $\lambda : \mathbb{R} \times \mathbb{R}_+ \rightarrow \mathbb{C}$ such that

$$\forall (x, \xi) \in \mathbb{R} \times \mathbb{R}_+, \quad S_{\varphi_\beta} f(x, \xi) = \lambda(x, \xi) \times F(\vartheta(x + i\xi^{-1})). \quad (6)$$

In words, Theorem 1 states that, up to multiplication by a smooth nonvanishing factor and composition with a conformal transformation, the Generalized Stockwell Transform of analyzing window φ_β of any finite energy signal is an analytic function on the unit disk \mathbb{D} .

Proof. First, remark that for $f \in L^2(\mathbb{R})$, $\forall (x, \xi) \in \mathbb{R} \times \mathbb{R}_+$

$$\begin{aligned} S_{\varphi_\beta} f(x, \xi) &= \xi \int_{-\infty}^{\infty} f(t) \overline{\varphi_\beta(\xi(t-x))} e^{-2\pi i \xi t} dt \\ &= \xi e^{-2\pi i \xi x} \int_{-\infty}^{\infty} f(t) \overline{\varphi_\beta(\xi(t-x))} e^{2\pi i \xi (t-x)} dt \\ &= \xi e^{-2\pi i \xi x} \int_{-\infty}^{\infty} f(t) \overline{\psi_\beta(\xi(t-x))} dt \\ &= \sqrt{\xi} e^{-2\pi i \xi x} \frac{1}{\sqrt{\xi^{-1}}} \int_{-\infty}^{\infty} f(t) \overline{\psi_\beta\left(\frac{t-x}{\xi^{-1}}\right)} dt \\ &= \sqrt{\xi} e^{-2\pi i \xi x} W_{\psi_\beta} f(x, \xi^{-1}) \end{aligned} \quad (7)$$

where $W_{\psi_\beta} f$ is the Cauchy *wavelet* transform of f .

Then, from [9, Section 2.2] and [11, Theorem 2], the Cauchy wavelet transform of $f \in L^2(\mathbb{R})$ is analytic on the upper-half complex plane, that is $G : z = x + iy \mapsto y^{-\beta-1/2} W_{\psi_\beta} f(x, y)$ is an analytic function on \mathbb{C}_+ . Moreover, let $\vartheta : \mathbb{C}_+ \rightarrow \mathbb{D}$ be the *Cayley* transform defined as

$$\vartheta(z) = \frac{z - i}{z + i}. \quad (8)$$

Then, ϑ is a conformal and invertible mapping from the upper-half plane to the unit disk whose inverse is also conformal and writes

$$\vartheta^{-1}(w) = \frac{i + iw}{1 - w}. \quad (9)$$

Define $F : \mathbb{D} \rightarrow \mathbb{C}$ as $\forall w \in \mathbb{D}$, $F(w) = G(\vartheta^{-1}(w))$. F being the composition of an analytic function G , and of a conformal, hence holomorphic, mapping ϑ^{-1} , F is analytic. Finally, let $\lambda(x, \xi) = \xi^{-\beta} e^{-2\pi i \xi x}$, then $\lambda : \mathbb{R} \times \mathbb{R}_+ \rightarrow \mathbb{C}$ is a smooth nonvanishing function.

By construction of F , ϑ and λ , they satisfy all the conditions enumerated in Theorem 1 and $\forall (x, \xi) \in \mathbb{R} \times \mathbb{R}_+$, $S_{\varphi_\beta} f(x, \xi) = \lambda(x, \xi) \times F(\vartheta(x + i\xi^{-1}))$ which concludes the proof. \square

3. The Zeros of the Analytic Stockwell Transform of White Noise

The purpose of this section is to characterize the probability distribution of the zeros of the newly introduced Analytic Stockwell Transform of white noise. To this purpose, the link between the Analytic Stockwell Transform and the Cauchy wavelet transform, established in the proof of Theorem 1, and the one-to-one correspondence between the zeros of the Cauchy wavelet transform of white noise and the zeros of the so-called *hyperbolic Gaussian Analytic Function*, proven in [18, 12], are combined to yield Theorem 3 below.

For the sake of completeness, before proving the connection with the hyperbolic Gaussian Analytic Function, some necessary elements of hyperbolic and stochastic geometry are presented; the definition of the hyperbolic Gaussian Analytic Function is reminded accompanied with its main interesting properties so that the present section is self-content. The interested reader can refer to [35] for a thorough presentation of the theory of Gaussian Analytic Functions and a detailed study of their zeros.

3.1. Gaussian Analytic Functions and point processes

The *hyperbolic plane* is the Riemannian surface, i.e, two-dimensional manifold, that is homeomorphic to a plane and has constant negative curvature equal to -1 . Among its classical representations are the hyperboloid model, the Klein model, the Poincaré half-plane model, and the Poincaré disk model. The present work uses the Poincaré disk model.

Definition 3. The Poincaré disk model is the triplet $(\mathbb{D}, \mathbf{d}_{\mathbb{D}}, \mathbf{m}_{\mathbb{D}})$ constituted of the open unit disk $\mathbb{D} = \{z \in \mathbb{C} : |z| < 1\}$, the *hyperbolic metric* defined as

$$\mathbf{d}_{\mathbb{D}}(z) = \frac{dz}{(1 - |z|^2)^2} \quad (10)$$

where dz refers to the standard Lebesgue measure on \mathbb{C} , and the associated *hyperbolic distance* defined for $z, w \in \mathbb{D}$ as

$$\mathbf{d}_{\mathbb{D}}(z, w) = 2 \tanh^{-1}(\mathbf{p}_{\mathbb{D}}(z, w)), \quad \mathbf{p}_{\mathbb{D}}(z, w) = \frac{|z - w|}{|1 - \bar{w}z|} \quad (11)$$

with $\mathbf{p}_{\mathbb{D}}$ the *pseudo-hyperbolic distance*.

The isometries under the hyperbolic distance $\mathbf{d}_{\mathbb{D}}$ of the Poincaré disk are exactly the homographies of the form

$$z \mapsto \frac{az + b}{\bar{b}z + \bar{a}}, \quad a, b \in \mathbb{C}, |a|^2 - |b|^2 = 1. \quad (12)$$

Definition 4. Let $\alpha > 0$ a real number, the *hyperbolic Gaussian Analytic Function* is defined on \mathbb{D} as

$$\forall z \in \mathbb{D}, \quad \mathbf{GAF}_{\mathbb{D}}^{(\alpha)}(z) = \sum_{n=0}^{\infty} \zeta_n \sqrt{\frac{\Gamma(\alpha + n)}{n!}} z^n \quad (13)$$

where $(\zeta_n)_{n \in \mathbb{N}}$ is a sequence of independent identically distribution standard Gaussian random variables, $\zeta_n \sim \mathcal{N}_{\mathbb{C}}(0, 1)$. By [35, Lemma 2.2.3], for $\alpha > 0$, $\mathbf{GAF}_{\mathbb{D}}^{(\alpha)}$ is well-defined and almost-surely an analytic function on \mathbb{D} .

Gaussian Analytic Functions have received much interest from the probability and spatial statistics communities, in particular due to the remarkable properties of their zeros [35]. Indeed, since Gaussian Analytic Functions are almost-surely analytic, their zeros constitute a random set of isolated

points in \mathbb{C} with probability one. Further, [35, Lemma 2.4.1] ensures that the random zeros of a Gaussian Analytic Function are almost-surely *simple*. Hence, the zero set of a Gaussian Analytic Function forms a *simple point process* [36, 37], defined as a random variable taking values in the configurations of points in \mathbb{C} . Several Gaussian Analytic Functions, among which the hyperbolic Gaussian Analytic Function, are distinguished by the fact that their zeros are distributed very uniformly in their definition domain, which is mathematically formalized as an *invariance* under isometries [35, Section 2.3]. This invariance property is the cornerstone of the zero-based signal processing procedures designed for detection [16, 13], denoising [18, 16] and component separation [15]. The interested reader can refer to [38] for a review of the use of spatial statistics in time–frequency analysis.

Theorem 2. [35, Proposition 2.3.4] *For $\alpha > 0$, the point process formed by the zeros of $\text{GAF}_{\mathbb{D}}^{(\alpha)}$ is invariant under the isometries of the hyperbolic disk.*

3.2. Link with the zeros of the Hyperbolic Gaussian Analytic Function

A major consequence of Theorem 1 is that, since ϑ is invertible and λ never vanishes, the zeros of the Analytic Stockwell Transform of a finite energy signal are in one-to-one correspondance with the zeros of an analytic function F on the unit disk. As so, the zeros of the Analytic Stockwell Transform form a collection of isolated points in \mathbb{D} . Further, in the presence of noise in the signal, f is random and then the zeros of $S_{\varphi_\beta} f$ are random isolated points in \mathbb{D} , thus form a point process.

In line with [17, 12, 13], the purpose of this section is to study a remarkable instance of such point process, that is the zeros of the Analytic Stockwell Transform of *white noise*, and to demonstrate that it coincides in law with the zeros of the hyperbolic Gaussian Analytic Function introduced in Section 3.1. Following [17, 18, 16, 12], this connection is established in two steps: first the continuous white noise adapted to the considered transform is rigorously constructed; second the equality, in law, of the point process of the zeros of the transform of white noise and of the zeros of the associated Gaussian Analytic Function is proven. The following lemma will appear as an important building block for the design of the continuous white noise adapted to the Analytic Stockwell Transform.

Lemma 1. *Let $\beta > 0$ and consider the family of functions $\{f_n\}_{n \in \mathbb{N}}$ defined*

through their Fourier transforms such that, $\forall n \in \mathbb{N}$,

$$\forall \nu \in \mathbb{R}_+, \quad \widehat{f}_n(\nu) = \sqrt{\frac{n!}{\Gamma(2\beta + n + 1)}} 2\pi e^{-2\pi\nu} (2\pi)^{2\beta} \nu^\beta L_n^{(2\beta)}(4\pi\nu), \quad (14)$$

where $L_n^{(2\beta)}$ denotes the Laguerre polynomial of order n with parameter 2β , defined by the Rodrigues formula

$$L_n^{(2\beta)}(\mu) = \frac{e^\mu \mu^{-2\beta}}{n!} \frac{d^n}{d\mu^n} [e^{-\mu} \mu^{2\beta+n}] (\mu). \quad (15)$$

There exists a smooth nonvanishing function $\eta_\beta : \mathbb{R} \times \mathbb{R}_+$ such that, for all $n \in \mathbb{N}$, the Analytic Stockwell Transform of f_n has the closed-form expression:

$$S_{\varphi_\beta} f_n(x, \xi) = \eta_\beta(x, \xi) \sqrt{\frac{\Gamma(2\beta + n + 1)}{n!}} \vartheta(z)^n. \quad (16)$$

Remark 3. The above lemma is an original contribution of the present work. Indeed, first, the Hilbertian basis used to connect the Cauchy Wavelet Transform of white noise to the Hyperbolic Gaussian Analytic Function in [17, 18, 12] has to be adapted to the Analytic Stockwell Transform of Section 2.2. Second, in [17, 18] the Hilbertian basis used is only defined implicitly. Third, it seems that the explicit derivations performed in [12, Theorem 2.3], relying on [12, Equation (2.15)], together with the computations in [39, Section 4], contains erroneous prefactors that might impact the definition of the white noise adapted to the Cauchy wavelet transform used to prove [12, Theorem 2.3]. Hence, since Equation (16) is the cornerstone of the demonstration of the connection between the hyperbolic Gaussian Analytic Function and the Analytic Stockwell Transform of white noise, for the sake of completeness, the proof below details the entire calculation, including the proposed corrected prefactors and normalizations.

Proof. First, remark that for $f \in L^2(\mathbb{R})$, the analytic factor of the Stockwell transform, corresponding to

$$\xi^{\beta+1/2} W_{\psi_\beta} f(x, \xi^{-1}) = \xi^{\beta+1} \int_{-\infty}^{\infty} f(t) \overline{\psi_\beta\left(\frac{t-x}{\xi^{-1}}\right)} dt,$$

involves the convolution between f and h defined as $h(t) = \overline{\psi_\beta(-t/\xi^{-1})}$. Then, using that the Fourier transform of the convolution between two functions is the product of the Fourier transforms of these functions leads to

$$\xi^{\beta+1/2}W_{\psi_\beta}f(x, \xi^{-1}) = \xi^{\beta+1} \int_{-\infty}^{\infty} \widehat{f}(\nu)\widehat{h}(\nu)e^{2\pi i\nu x} d\nu. \quad (17)$$

Using the symmetries of the Fourier transform and the expression of the Fourier transform of the Cauchy wavelet provided in Equation (4) yields

$$\widehat{h}(\nu) = \xi^{-1}\overline{\widehat{\psi}_\beta(\xi^{-1}\nu)} = \begin{cases} \xi^{-1-\beta}\nu^\beta e^{-2\pi\xi^{-1}\nu} & \text{if } \nu > 0 \\ 0 & \text{otherwise} \end{cases}$$

which, when injected into Equation (17), leads to

$$\begin{aligned} \xi^{\beta+1/2}W_{\psi_\beta}f(x, \xi^{-1}) &= \xi^{\beta+1} \int_{-\infty}^{\infty} \widehat{f}(\nu)\widehat{h}(\nu)e^{2\pi i\nu x} dt \\ &= \int_0^{\infty} \widehat{f}(\nu)\nu^\beta e^{-2\pi\xi^{-1}\nu} e^{2\pi i\nu x} d\nu \\ &= \int_0^{\infty} \widehat{f}(\nu)\nu^\beta e^{2\pi i\nu(x+i\xi^{-1})} d\nu. \end{aligned} \quad (18)$$

Then, injecting the expression of the Fourier transform of f_n provided in Equation (14) into the expression of the analytic wavelet transform of Equation (18) and setting $z = (x + i\xi^{-1})$, one obtains

$$\begin{aligned} \xi^{\beta+1/2}W_{\psi_\beta}f_n(x, \xi^{-1}) &= \int_0^{\infty} \widehat{f}_n(\nu)\nu^\beta e^{2\pi i\nu z} d\nu \\ &= \sqrt{\frac{n!}{\Gamma(\beta+n+1)}} 2\pi \int_0^{\infty} e^{2\pi\nu(iz-1)} (2\pi\nu)^{2\beta} L_n^{(2\beta)}(4\pi\nu) d\nu \\ &\stackrel{\mu=2\pi\nu}{=} \sqrt{\frac{n!}{\Gamma(\beta+n+1)}} \int_0^{\infty} e^{\mu(iz-1)} \mu^{2\beta} L_n^{(2\beta)}(\mu) d\mu \end{aligned} \quad (19)$$

Replacing the expression of the Laguerre polynomial by its Rodrigues formula

of Equation (15) one gets

$$\begin{aligned}
& \int_0^\infty e^{\mu(iz-1)} \mu^{2\beta} L_n^{(2\beta)}(2\mu) \, d\mu \\
&= \int_0^\infty e^{\mu(iz-1)} \mu^{2\beta} \frac{e^{2\mu} (2\mu)^{-2\beta}}{n!} \frac{d^n}{d\mu^n} [e^{-\mu} \mu^{2\beta+n}] (2\mu) \, d\mu \\
&= \frac{1}{2^{2\beta} n!} \int_0^\infty e^{\mu(iz+1)} \frac{d^n}{d\mu^n} [e^{-\mu} \mu^{2\beta+n}] (2\mu) \, d\mu \\
&\stackrel{\nu=2\mu}{=} \frac{1}{2^{2\beta+1} n!} \int_0^\infty e^{\nu \frac{iz+1}{2}} \frac{d^n}{d\nu^n} [e^{-\nu} \nu^{2\beta+n}] (\nu) \, d\nu
\end{aligned} \tag{20}$$

which is the Laplace transform¹ of the n th order derivative of $g_n(\nu) = e^{-\nu} \nu^{2\beta+n}$ evaluated in $-(iz+1)/2$, i.e.,

$$\int_0^\infty e^{\mu(iz-1)} \mu^{2\beta} L_n^{(2\beta)}(2\mu) \, d\mu = \frac{1}{2^{2\beta+1} n!} \mathcal{L} \{g_n^{(n)}\} \left(-\frac{iz+1}{2} \right). \tag{21}$$

To get a closed-form expression of $\mathcal{L} \{g_n^{(n)}\}$, the following lemma is needed.

Lemma 2. *Let $n \in \mathbb{N}$, and $g : \mathbb{R} \rightarrow \mathbb{C}$ be n times differentiable. Assume that the n th derivative of g , denoted $g^{(n)}$, is of exponential type². Then, the Laplace transform of $g^{(n)}$ writes*

$$\mathcal{L} \{g^{(n)}\} (s) = s^n \mathcal{L}[g](s) - \sum_{k=0}^{n-1} s^{n-k-1} g^{(k)}(0^+) \tag{22}$$

where $g^{(k)}(0^+)$ denotes the limit of $g^{(k)}(t)$ as $t \rightarrow 0$, $t > 0$.

Proof. The proof derives from a recursion on the differentiation order n . \square

Hence, the first step to compute the Laplace transform of $g_n^{(n)}$ is to derive an expression of the Laplace transform of g_n . For all $s \in \mathbb{C}$ satisfying $\text{Re}(1+s) > 0$, one has

$$\mathcal{L}[g_n](s) = \int_0^\infty e^{-s\nu} e^{-\nu} \nu^{2\beta+n} \, d\nu = \frac{\Gamma(2\beta+n+1)}{(1+s)^{2\beta+n+1}} \tag{23}$$

¹Let $g : \mathbb{R} \rightarrow \mathbb{C}$. The Laplace transform of g , denoted $\mathcal{L}[g] : \mu \subseteq \mathbb{C} \rightarrow \mathbb{C}$, is a function of the complex variable s defined as: $\mathcal{L}\{g\}(s) = \int_{\mathbb{R}} e^{-\nu s} g(\nu) \, d\nu$, $s \in \mu$.

²A function $g : \mathbb{R} \rightarrow \mathbb{C}$ is said to be of *exponential type* if there exist $M > 0$ and $\tau > 0$ such that $|g(t)| \leq M e^{t/\tau}$ in the limit $t \rightarrow \infty$

leveraging the generalized change of variable $\nu' = \nu(1 + s)$ and the definition of the Euler Gamma function. The second step is to compute the limits $g^{(k)}(0^+)$ for $k \in \{0, \dots, n-1\}$. To that aim, a recursion shows that for all $k \in \{0, 1, \dots, n\}$, there exists a polynomial p_k of order n , such that

$$g^{(k)}(\nu) = e^{-\nu} \nu^{2\beta} p_k(\nu) \quad (24)$$

and thus, since $\beta > 0$, $\forall k \in \{0, 1, \dots, n-1\}$, $g^{(k)}(0^+) = 0$. Further, for $k = n$, Equation (24) shows that $g_n^{(n)}$ is of exponential type. Altogether, Lemma 2 applies and the combination of Equations (22) and (23) enables to obtain a closed-form expression of the integral in Equation (21)

$$\begin{aligned} \int_0^\infty e^{\mu(iz-1)} \mu^{2\beta} L_n^{(2\beta)}(2\mu) d\mu &= \frac{1}{2^{2\beta+1} n!} \left(-\frac{iz+1}{2} \right)^n \frac{\Gamma(2\beta+n+1)}{\left(1 - \frac{iz+1}{2}\right)^{2\beta+n+1}} \\ &= \frac{1}{n!} (-iz-1)^n \frac{\Gamma(2\beta+n+1)}{(1-iz)^{2\beta+n+1}} \\ &= \frac{1}{n!} \left(\frac{-iz-1}{1-iz} \right)^n \frac{\Gamma(2\beta+n+1)}{(1-iz)^{2\beta+1}} \\ &= \left(\frac{i}{z+i} \right)^{2\beta+1} \frac{\Gamma(2\beta+n+1)}{n!} \left(\frac{z-i}{z+i} \right)^n. \end{aligned} \quad (25)$$

Equations (20) and (25) show that

$$\xi^{\beta+1/2} W_{\psi_\beta} f_n(x, \xi^{-1}) = \left(\frac{i}{z+i} \right)^{2\beta+1} \sqrt{\frac{\Gamma(2\beta+n+1)}{n!}} \vartheta(z)^n \quad (26)$$

where ϑ is the Cayley transform defined in Equation (8). Finally, remembering that $z = x + i\xi^{-1}$, let $\eta_\beta : \mathbb{R} \times \mathbb{R}_+ \rightarrow \mathbb{C}$ be defined as

$$\forall (x, \xi) \in \mathbb{R} \times \mathbb{R}_+, \quad \eta_\beta(x, \xi) = \sqrt{\xi} e^{-2\pi i \xi x} \left(\frac{i}{x + i\xi^{-1} + i} \right)^{2\beta+1} \quad (27)$$

Then, for any $\beta > 0$, η_β is a well-defined a smooth nonvanishing function on the upper half-plane, and the Analytic Stockwell Transform of f_n writes

$$\begin{aligned} S_{\varphi_\beta} f_n(x, \xi) &= \sqrt{\xi} e^{-2\pi i \xi x} W_{\psi_\beta} f_n(x, \xi^{-1}) \\ &= \eta_\beta(x, \xi) \sqrt{\frac{\Gamma(2\beta+n+1)}{n!}} \vartheta(z)^n. \end{aligned} \quad (28)$$

□

Theorem 3. *Let $\beta > 0$, $\psi_\beta \in L^2(\mathbb{R})$ be the Cauchy wavelet of parameter β and $\varphi_\beta(t) = \psi_\beta(t)e^{-2\pi it}$. Then, up to a conformal transform, the zeros of the Analytic Stockwell Transform with analysis window φ_β of the white noise coincide in law with the zero set of the hyperbolic Gaussian Analytic Function of parameter $2\beta + 1$. Consequently, the zero set of the Analytic Stockwell Transform of white noise is invariant under isometries of \mathbb{D} .*

Remark 4. Establishing a connection between time–frequency transforms and Gaussian Analytic Functions with isometry-invariant zero sets requires to consider the *complex-valued* white noise [16, Section 4], [12, 17, 18, 13]. Thus, all along this work, “white noise” will refer to a complex random variable.³

Proof. This proof follows closely the reasoning developed in [12, Theorem 4.3], linking the Cauchy wavelet transform of white noise to the Hyperbolic Gaussian Analytic Function. It is sketched here for the sake of completeness.

The first step consists in defining rigorously the continuous white noise adapted to the considered transform. To that aim, two main paths have been proposed, respectively described in [18, 16] and in [12], which is used in the following. Considering $\mathcal{H} = L^2(\mathbb{R})$ and the Hilbertian basis $\{f_n\}_{n \in \mathbb{N}}$ introduced in Lemma 1, applying [12, Proposition 3.3] yields a completion Θ of $L^2(\mathbb{R})$ in which the limit of the series

$$\zeta = \sum_{n \in \mathbb{N}} \zeta_n f_n, \quad \zeta_n \sim \mathcal{N}_{\mathbb{C}}(0, 1) \tag{29}$$

with $(\zeta_n)_{n \in \mathbb{N}}$ a sequence of independent identically distribution standard Gaussian random variables, defines a Gaussian random variable with the characteristic function of the white noise. Note that, as emphasize in [12, Section 3] Θ depends on the basis, hence the importance of Lemma 1 deriving a basis suited to the Analytic Stockwell Transform.

The second step is to show that the Analytic Stockwell Transforms extends to Θ , which then ensures that the transform of the continuous white noise is well-defined. To that aim, for $\beta > 0$ fixed, let $\{\Psi_n\}_{n \in \mathbb{N}}$ be the sequence of analytic functions on \mathbb{D} defined as

$$\Psi_n(w) = \sqrt{\frac{\Gamma(2\beta + n + 1)}{n!}} w^n. \tag{30}$$

³The interested reader can refer to [16, Section 3] for a study of the far more intricate case of real white noise, which will not be discussed in the present work.

For $\mathfrak{K} \subset \mathbb{D}$ a compact, let $0 < R < 1$ be such that $\mathfrak{K} \subset \overline{\mathbb{B}}(0, R)$, then

$$\begin{aligned} \sum_{n \in \mathbb{N}} (1 + n^2) |\Psi_n(w)|^2 &= \sum_{n \in \mathbb{N}} (1 + n^2) \frac{\Gamma(2\beta + n + 1)}{n!} |w|^{2n} \\ &\leq \sum_{n \in \mathbb{N}} (1 + n^2) \frac{\Gamma(2\beta + n + 1)}{n!} R^{2n} \\ &< \infty \quad \text{since } |R| < 1. \end{aligned} \quad (31)$$

Hence, the $(C_{\mathfrak{K}}$ revisited) condition of [12, Theorem 3.4] is satisfied and

$$\mathcal{T}f(w) = \sum_{n \in \mathbb{N}} \langle f, f_n \rangle \Psi_n(w) \quad (32)$$

yields a well-defined and continuous transform $\mathcal{T} : L^2(\mathbb{R}) \rightarrow \mathcal{A}(\mathbb{D})$. Then, Lemma 1 shows that for any $n \in \mathbb{N}$,

$$\begin{aligned} \forall (x, \xi) \in \mathbb{R} \times \mathbb{R}_+, \quad S_{\beta} f_n(x, \xi) &= \eta_{\beta}(x, \xi) \Psi_n(\vartheta(z)) \\ &= \eta_{\beta}(x, \xi) \mathcal{T}f_n(\vartheta(z)), \quad z = x + i\xi^{-1} \end{aligned} \quad (33)$$

which extends to any $f \in L^2(\mathbb{R})$ by continuity of \mathcal{T} . Applying [12, Theorem 3.4] proves that \mathcal{T} extends continuously to Θ . Consequently, $\mathcal{T}\zeta$ is well-defined and it follows from the fact that η_{β} is nonvanishing that the relation

$$\forall (x, \xi) \in \mathbb{R} \times \mathbb{R}_+, \quad S_{\beta} \zeta(x, \xi) = \eta_{\beta}(x, \xi) \mathcal{T}\zeta(\vartheta(z)), \quad z = x + i\xi^{-1} \quad (34)$$

yields a rigorous definition to the Analytic Stockwell transform of white noise. Finally, by the definition of ζ and of \mathcal{T} provided in Equations (29) and (32),

$$\forall w \in \mathbb{D}, \quad \mathcal{T}\zeta(w) = \sum_{n \in \mathbb{N}} \zeta_n \Psi_n(w) = \sum_{n \in \mathbb{N}} \zeta_n \sqrt{\frac{\Gamma(2\beta + n + 1)}{n!}} w^n = \text{GAF}^{(2\beta+1)}(w)$$

from which one deduces that for all $(x, \xi) \in \mathbb{R} \times \mathbb{R}_+$, and for $z = x + i\xi^{-1}$

$$S_{\beta} \zeta(x, \xi) = \eta_{\beta}(x, \xi) \text{GAF}^{(2\beta+1)}(\vartheta(z)). \quad (35)$$

Since η_{β} is nonvanishing and ϑ is bijective, Equation (35) ensures that the zeros of the Analytic Stockwell Transform of white noise are in one-to-one correspondance with the zeros of the Hyperbolic Gaussian Analytic Function of parameter $2\beta + 1$. \square

4. Numerical Experiments and Spatial Statistics of Zeros

The present section goal is twofold. First, illustrations of the zero set of the Analytic Stockwell Transform are provided, enabling the reader to observe qualitatively the *hyperbolic* uniform spread of zeros in the Poincaré disk. Second, the characterization of zeros, established in Theorem 3, is supported by quantitative numerical evidence obtained by thorough comparison of the theoretical and empirical *spatial statistics* of the point process of zeros. A documented Python toolbox implementing the Analytic Stockwell Transform and performing the spatial statistics analysis of the zeros of the transform, thus enabling to reproduce all the experiments, plots and figures presented in Section 4 has been made publicly available by the authors.⁴

4.1. Discrete Time–Frequency Analysis

In Section 2, the Analytic Stockwell Transform has been defined for *continuous* signals $f \in L^2(\mathbb{R})$. Though, in practice, one only measures a finite number $N \in \mathbb{N}^*$ of values of the signal of interest in a bounded time window

$$\forall n \in \{1, \dots, N\}, \quad y_n = f(x_n), \quad x_n = x_{\min} + n\Delta_x, \quad (36)$$

corresponding to *sampling* f in $[x_{\min}, x_{\max}]$ at equally spaced time x_1, \dots, x_N with resolution $\Delta_x = (x_{\max} - x_{\min})/(N - 1)$. This yields a *discrete* signal $\mathbf{y} = (y_1, \dots, y_N) \in \mathbb{C}^N$. The continuous signal f is then said to be sampled at frequency $1/\Delta_x$. Furthermore, in practice, the frequency variable needs to be discretized as well. In the present work, motivated by the connection with the Cauchy wavelet transform, the discrete Analytic Stockwell transform is computed on M logarithmically spaced frequency channels: $\forall m \in \{1, \dots, M\}$,

$$\log_2(\xi_m) = \log_2(\xi_{\min}) + m\Delta_{\log_2 \xi}, \quad \Delta_{\log_2 \xi} = \frac{\log_2(\xi_{\max}) - \log_2(\xi_{\min})}{M - 1} \quad (37)$$

where $\Delta_{\log_2 \xi}$ is the log-frequency resolution, and the range $[\xi_{\min}, \xi_{\max}]$ is chosen depending on the time–frequency pattern of interest, with the constraint of satisfying Nyquist-Shannon reconstruction theorem [40, Theorem 5.15].

Definition 5. Let $M, N \in \mathbb{N}^*$ and $\beta > 0$. The *Discrete Analytic Stockwell Transform* of parameter β with N time samples and M frequency channels

⁴<https://github.com/courbot/ast>

is the application $\mathbf{S}_{\varphi_\beta} : \mathbb{C}^N \rightarrow \mathbb{C}^{N \times M}$ associating to the discrete signal $\mathbf{y} = (y_1, \dots, y_N) \in \mathbb{C}^N$, the matrix defined as

$$(\mathbf{S}_{\varphi_\beta} \mathbf{y})_{j,m} = \sum_{n=0}^{N-1} y_n \varphi_\beta(\xi_m(x_n - x_j)) e^{-i \frac{2\pi}{N} \xi_m \cdot x_n} \quad (38)$$

for indices $j \in \{0, \dots, N-1\}$, $m \in \{0, \dots, M-1\}$ and discrete times and frequencies $\{x_n, \xi_m\}_{n,m}$ defined in Equations (36) and (37) respectively.

Definition 6. Let $N \in \mathbb{N}^*$. The *discrete* N -dimensional white noise $\zeta \in \mathbb{C}^N$ is the Gaussian random vector of zero mean and identity covariance matrix:

$$\zeta = (\zeta_1, \dots, \zeta_N), \quad \zeta_n \sim \mathcal{N}(0, 1) \quad (39)$$

where ζ_1, \dots, ζ_N are independent identically distributed Gaussian variables.

Proposition 1. *The discrete transform $\mathbf{S}_{\varphi_\beta} \zeta$ is a discretization of the Analytic Stockwell Transform of continuous white noise $S_{\varphi_\beta} \zeta$ of Equation (34).*

Proof. The demonstration relies on the orthogonality of the family $\{f_n\}_{n \in \mathbb{N}}$, defined in Lemma 1, used to construct the continuous white noise ζ , and stems from the reasoning developed in [12, Section 5]. \square

Numerically, the discrete Analytic Stockwell Transform is computed in the Fourier domain, using a Riemann approximation of Equation (17) combined with Equation (7). Following [15, 17, 18, 16, 12, 13, 41] the localization of zeros is performed using the *Minimal Grid Neighbors* algorithm, introduced initially in the code⁵ accompanying the seminal paper [15]. The method is described in details in [38, Section 4.3] in the context of standard time–frequency analysis, and can be applied as is to the discrete Analytic Stockwell Transform of Definition 5. A major advantage of the Minimal Grid Neighbors algorithm is that it benefits from a strong robustness, explained by its solid theoretical ground established recently [41].

Figure 1 displays the modulus of the discrete Analytic Stockwell Transform of parameter β such that $\alpha = 2\beta + 1 = 300$ computed over a realization of discrete white noise of length $N = 4000$ with sampling frequency $\nu_s = 400$ Hz, corresponding to a time resolution $\Delta_x = 1/\nu_s$, and for $M = 600$

⁵<https://perso.ens-lyon.fr/patrick.flandrin/zeros.html>

frequency channels ranging from $\xi_{\min} = 2^{-6}$ to $\xi_{\max} = 2^{3.3}$, together with the associated zeros. The representation on the Poincaré disk, on the right of Figure 1, illustrates that, in the *hyperbolic* geometry in which the metric explodes as one gets closer to the border of the disk \mathbb{D} , the zeros spread very evenly. Similarly, the representation in the time–scale plane, on the left of Figure 1, shows the uniform spread in the hyperbolic upper-half plane.

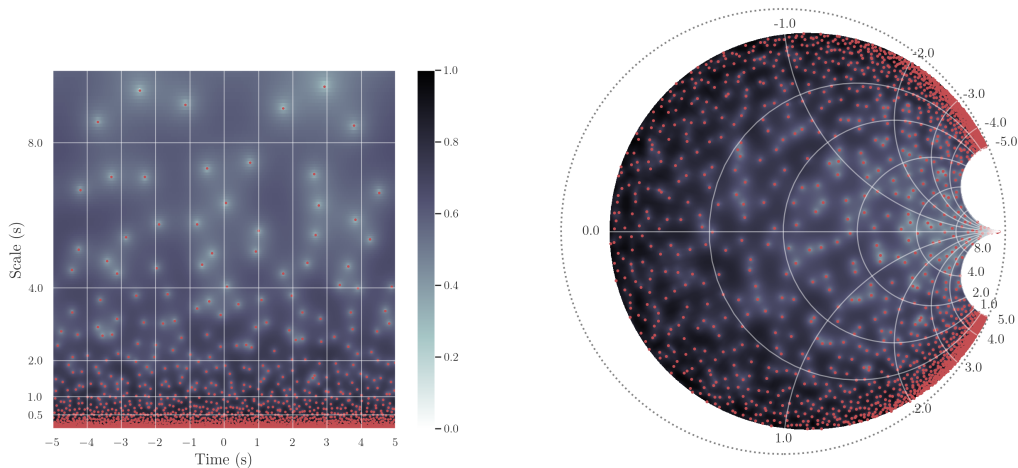


Figure 1: Log-modulus of the Analytic Stockwell Transform of white noise (background colormap) and its zero set (red dots) $\mathfrak{Z}^{(\alpha)}$. The discrete white noise is considered to span a time period of $x_{\max} - x_{\min} = 10$ s and corresponds to a sampling frequency of 400 Hz over. The parameter of the Cauchy wavelet β is chosen such that $\alpha = 2\beta + 1 = 300$. Representation in the (x, ξ^{-1}) -plane where the inverse frequency ξ^{-1} is called the *scale* in reference to the related Cauchy wavelet transform (left). Representation in the Poincaré disk \mathbb{D} parameterized by $\vartheta(x + i\xi^{-1})$ for (x, ξ^{-1}) running over the same grid, where ϑ is the Cayley transform of Equation (8). The dotted circle represents the border of \mathbb{D} (right).

4.2. Spatial Statistics

Point processes can be characterized by their *k-points correlation functions* [36, Section 5.4], describing the probabilistic interactions between the points of a realization of the point process, e.g., the short-range repulsion observed in the zero pattern of analytic time–frequency transforms [15, 18, 16, 12, 13].

Definition 7. Let \mathfrak{Z} be a point process on $\Lambda \subseteq \mathbb{C}$. For $k \in \mathbb{N}^*$, if existing,

the k -point correlation function ρ_k of \mathfrak{Z} is defined by

$$\int_{\Lambda^k} \Psi(w_1, \dots, w_k) \rho_k(w_1, \dots, w_k) dw_1 \dots dw_k = \mathbb{E} \left[\sum_{\substack{(w_1, \dots, w_k) \in \mathfrak{Z}^k \\ w_1 \neq \dots \neq w_k}} \Psi(w_1, \dots, w_k) \right], \quad (40)$$

for any bounded compactly supported measurable map $\Psi : \Lambda^k \rightarrow \mathbb{C}$, and where dw denotes the metric in the ambient space, e.g., the hyperbolic metric $\mathfrak{m}_{\mathbb{D}}$ in the Poincaré disk. In particular, ρ_1 is often called the *intensity* of the point process as, by definition, integrating it over a domain yields the expected number of points falling into. As for the two-point correlation function ρ_2 , it is commonly normalized to get the *pair-correlation function* [37, Chapter 4], defined as

$$\tilde{g}(w_1, w_2) = \frac{\rho_2(w_1, w_2)}{\rho_1(w_1)\rho_1(w_2)}, \quad w_1, w_2 \in \Lambda. \quad (41)$$

By Proposition 2, the point process corresponding to the zero set of the hyperbolic Gaussian Analytic Function $\mathfrak{Z} = \text{GAF}_{\mathbb{D}}^{(\alpha)}(\{0\})$, and hence to the zeros of the Analytic Stockwell Transform of parameter $\beta = (\alpha - 1)/2$ of white noise, is invariant under isometries of \mathbb{D} , which has two major consequences. First, the intensity ρ_1 , defined relatively to the hyperbolic metric $\mathfrak{m}_{\mathbb{D}}$ is constant. Second, the two-point correlation function only depends on the hyperbolic distance between w_1 and w_2 , or equivalently on the pseudo-hyperbolic distance. Consequently, the pair correlation function of the zeros of the hyperbolic Gaussian Analytic Function of parameter α writes

$$g^{(\alpha)}(r) = \tilde{g}^{(\alpha)}(w_1, w_2), \quad r = \mathfrak{p}_{\mathbb{D}}(w_1, w_2). \quad (42)$$

Remarkably, the joint intensities of zero sets of Gaussian Analytic Functions have closed-form expressions. Applying the Edelman-Kostlan formula [35, Section 2.4.1] [38, Proposition 16] yields the explicit expression⁶ of the inten-

⁶The difference from the formula derived in [17, 18] comes from a difference in the normalization of the hyperbolic metric of Equation (10) and of the metric used in [17, 18].

sity of the zeros of $\text{GAF}_{\mathbb{D}}^{(\alpha)}$:

$$\rho_1^{(\alpha)} = \frac{\alpha}{\pi}. \quad (43)$$

To access the higher-order joint intensities, one can leverage the formulas involving determinants and permanents provided in [35, Corollary 3.4.1], to get the following explicit formula for the pair correlation functions [17]

$$g^{(\alpha)}(r) = \frac{s^\alpha (\alpha(1-s) - s(1-s^\alpha))^2 + (\alpha s^\alpha(1-s) - (1-s^\alpha))^2}{(1-s^\alpha)^3}. \quad (44)$$

where $s = 1 - r^2$. This theoretical expression is to be compared to the pair correlation function of the zeros of the Analytic Stockwell Transform of parameter $\beta = (\alpha - 1)/2$ of white noise.

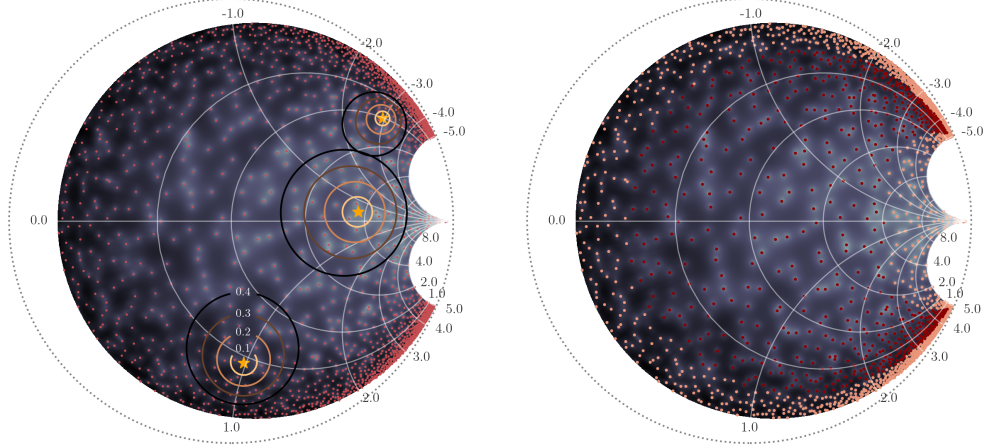
To provide quantitative numerical evidence supporting Theorem 3, the theoretical pair correlation $g^{(\alpha)}$ is compared to the *empirical* pair correlation function of the Analytic Stockwell Transform of parameter $\beta = (\alpha - 1)/2$ of white noise. The need for accurate and robust estimators of empirical pair correlation functions resulted in a rich variety of spatial statistics estimation strategies with solid theoretical guarantees [37, Section 4.3]. Notably, edge correction techniques have been developed to handle the fact that in practice only a bounded window is observed [37, Section 4.3.3].

Remark 5. Although derived in Euclidean geometry, the aforementioned spatial statistics framework [37] applies as is in the Poincaré disk, replacing the Euclidean metric and distance by their hyperbolic counterparts.

In the present work, the pair correlation function is estimated using the nonparametric estimator of [37, Section 4.3.5], the kernel being chosen as a step function of support size $h > 0$. The number of zeros in the observed window being large enough, border effects are managed using the *reduced-sampled* estimate [37, Section 4.3.3]. Denoting by $\mathfrak{Z}^{(\alpha)}$ the zero set of the Analytic Stockwell transform of parameter $\beta = (\alpha - 1)/2$ of white noise, the pair correlation function estimator writes

$$\widehat{g}^{(\alpha)}(r) = \frac{(1-r^2)^2}{4\alpha hr} \sum_{z \in \mathfrak{Z}^{(\alpha)} \setminus \mathfrak{B}^{(\alpha)}} \sum_{w \in \mathfrak{Z}^{(\alpha)}} \mathbf{1}_{\{|\mathbb{P}_{\mathbb{D}}(z,w)-r| < \frac{h}{2}\}} \quad (45)$$

where $\mathbf{1}_{\mathcal{A}}$ denotes the indicative function of the probabilistic event \mathcal{A} . To correct the bias induced by the observation of a *bounded* window the averaging over z is performed only on the zeros which are far enough from



(a) Isocontours (light orange to black circles) depicting equal pseudo-hyperbolic distances $\rho_{\mathbb{D}}$, and thus by Equation (11) equal hyperbolic distance, to three selected centers (orange stars). (b) *Inner* points (red dots) in $\mathfrak{Z}^{(\alpha)} \setminus \mathfrak{B}^{(\alpha)}$ are used as center point to enumerate the density of zeros in their vicinity, *outer* points (pink dots) in $\mathfrak{B}^{(\alpha)}$ are too close to the border and hence excluded from the ensemble average.

Figure 2: Key features of the implementation of the pair correlation function estimator $\hat{g}^{(\alpha)}$: counting zeros in hyperbolic disks (left) and border effect correction (right).

the border of the observed hyperbolic window. Denoting $\mathfrak{B}^{(\alpha)} \subset \mathfrak{Z}^{(\alpha)}$ the zeros which are too close to the window's border, represented as pink dots in Figure 2a, the averaging is performed on *inner* points $z \in \mathfrak{Z}^{(\alpha)} \setminus \mathfrak{B}^{(\alpha)}$, represented as dark red points in Figure 2b, while the counting runs on every points $w \in \mathfrak{Z}^{(\alpha)}$. The practical implementation of $\hat{g}^{(\alpha)}$ amounts to building concentric rings of radius r around each point in the zeros set, as illustrated in Figure 2a, counting the number of points in each hyperbolic ring, averaging it over the observed zeros, and finally normalizing by the theoretical first-intensity function provided in Equation (43).

The theoretical pair correlation function of $\text{GAF}_{\mathbb{D}}^{(\alpha)}$, whose explicit expression is provided in Equation (44), is displayed as a dashed black line in Figure 3 for three values of α . One remarks, going from the left to the right of Figure 3, that as α increases the short-range repulsion between zeros visible at the vicinity of $r = 0$ weakens while the range of attraction between zeros, correspond to the bump above one, gets narrower and shifts toward $r = 0$.

To compare the expected and empirical behaviors of the zeros of the Analytic Stockwell Transform of white noise, $R = 100$ realizations of the discrete white noise in dimension $N = 4000$ are generated, their Analytic Stockwell Transforms are computed at time resolution $1/\nu_s$ with $\nu_s = 4000$ Hz and across 600 frequency channels, yielding R realizations of the point process $\mathfrak{Z}^{(\alpha)}$ constituted of their zeros; finally the R the empirical pair correlation functions $\widehat{g}^{(\alpha)}$ are estimated from Equation (45), and averaged leading to the averaged empirical pair correlation function $\langle \widehat{g}^{(\alpha)} \rangle$ displayed as the solid blue line with star ticks in Figure 3 accompanied with their 5% and 95% quantiles. Empirical estimates show a good match with the theoretical pair correlation function for all three values of α , although with a slightly larger 95% credibility region for small α . All observations made on the theoretic $g^{(\alpha)}$ remains true for its empirical estimate, providing a strong numerical evidence of the connection between the hyperbolic Gaussian Analytic zeros and the zeros of the Analytic Stockwell Transform of white noise.

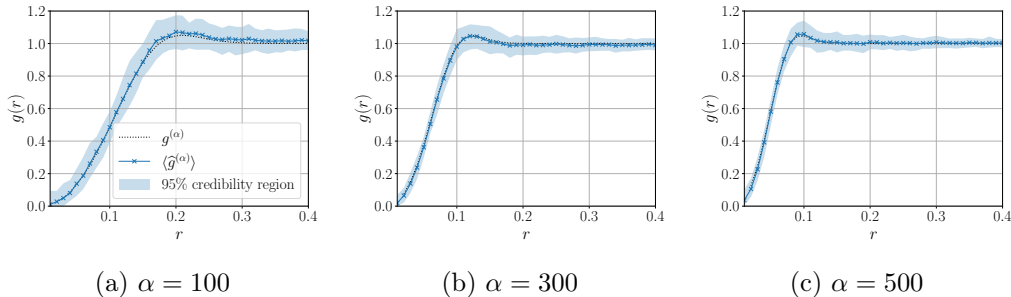


Figure 3: Theoretical pair correlation function of the zeros of the hyperbolic Gaussian Analytic function of parameter α (dashed black line) and averaged empirical pair correlation functions (blue solid line) of the zeroes of the Analytic Stockwell Transform of parameter $\beta = (\alpha - 1)/2$ of white noise for $\alpha \in \{100, 300, 500\}$. Ensemble averaging and quantile estimation are performed over $R = 100$ realizations of the discrete white noise in dimension $N = 4000$, corresponding to a time period of $x_{\max} - x_{\min} = 1$ s long and a sampling frequency $\nu_s = 4000$ Hz.

5. Conclusion and Perspectives

After evidencing the existence of an Analytic Stockwell Transform, whose analysis window have been designed leveraging a modulated Cauchy wavelet,

the zeros of the transform of white noise are characterized. To that aim a well-suited construction of continuous white noise has been presented, enabling to establish a strong connection between the Analytic Stockwell Transform of white noise and the hyperbolic Gaussian Analytic Function. This link permitted to transfer the remarkable properties of the zeros of the hyperbolic Gaussian Analytic Function, among which the invariance under isometries of the Poincaré disk, to the zeros of the Analytic Stockwell Transform of white noise. Finally, intensive Monte Carlo simulations are implemented to illustrate and support this result; notably the empirical pair correlation function of the zeros of the Analytic Stockwell Transform of white noise is shown to coincide very accurately with the expected theoretical pair correlation function of the zero set of the hyperbolic Gaussian Analytic Function. A documented Python toolbox reproducing all the experiments has been produced and made publicly available.⁷

The characterization of the distribution of zeros under a white noise hypothesis is the cornerstone of recent original zero-based detection procedures [16, 13, 42]. Hence, the direct continuation of the present work would consist in leveraging the knowledge gained on the zeros Analytic Stockwell Transform to perform signal detection in high-noise contexts. Though, application of spatial statistics in signal processing do not restrict to detection and zero-based denoising and separation strategies have shown promising results [15, 16, 42]. The nice resolution properties and great versatility of the Analytic Stockwell Transform make it a good candidate for the development of zero-based component separation algorithms. Finally, as the accuracy of zero-based procedures relies on the precise localization of zeros, the off-the-grid algorithm developed in [43] will be generalized to the hyperbolic geometry framework to enhance the quality of spatial statistics estimators, and hence reaching state-of-the-art detection and reconstruction performance.

6. Acknowledgements

The authors thank Rémi Bardenet for fruitful discussions and references.

References

- [1] P. Flandrin, Time–frequency/time-scale analysis, Academic press, 1998.

⁷<https://github.com/courbot/ast>

- [2] K. Gröchenig, Foundations of time–frequency analysis, Springer Science & Business Media, 2001.
- [3] P. Flandrin, Explorations in time–frequency analysis, Cambridge University Press, 2018.
- [4] M. S., A wavelet tour of signal processing, The Sparse Way (1999).
- [5] P. Flandrin, Time–frequency processing of bat sonar signals, in: Animal Sonar: Processes and Performance, Springer, 1988, pp. 797–802.
- [6] L. Wu, J. Castagna, S-transform and Fourier transform frequency spectra of broadband seismic signals, *Geophysics* 82 (5) (2017) O71–O81.
- [7] E. Chassande-Mottin, A. Pai, Best chirplet chain: Near-optimal detection of gravitational wave chirps, *Physical Review D—Particles, Fields, Gravitation, and Cosmology* 73 (4) (2006) 042003.
- [8] G. Ascensi, J. Bruna, Model space results for the gabor and wavelet transforms, *IEEE Transactions on Information Theory* 55 (5) (2009) 2250–2259.
- [9] S. Mallat, I. Waldspurger, Phase retrieval for the Cauchy wavelet transform, *J. Fourier Anal. Appl.* 21 (6) (2015) 1251–1309.
- [10] I. Waldspurger, Phase retrieval for wavelet transforms, *IEEE Trans. Inf. Theory* 63 (5) (2017) 2993–3009.
- [11] N. Holighaus, G. Koliander, Z. Průša, L. D. Abreu, Characterization of analytic wavelet transforms and a new phaseless reconstruction algorithm, *IEEE Transactions on Signal processing* 67 (15) (2019) 3894–3908.
- [12] R. Bardenet, A. Hardy, Time–frequency transforms of white noises and Gaussian analytic functions, *Applied and Computational Harmonic Analysis* 50 (2021) 73 – 104.
- [13] B. Pascal, R. Bardenet, A covariant, discrete time–frequency representation tailored for zero-based signal detection, *IEEE Transactions on Signal Processing* 70 (2022) 2950–2961.

- [14] T. J. Gardner, M. O. Magnasco, Sparse time–frequency representations, *Proc. Natl. Acad. Sci. U.S.A.* 103 (16) (2006) 6094–6099.
- [15] P. Flandrin, Time–frequency filtering based on spectrogram zeros, *IEEE Signal Processing Letters* 22 (11) (2015) 2137–2141.
- [16] R. Bardenet, J. Flamant, P. Chainais, On the zeros of the spectrogram of white noise, *Applied and Computational Harmonic Analysis* 48 (2) (2020) 682–705.
- [17] L. D. Abreu, A. Haimi, G. Koliander, J. L. Romero, Filtering with wavelet zeros and gaussian analytic functions, *arXiv:1807.03183* (2020).
- [18] G. Koliander, L. D. Abreu, A. Haimi, J. L. Romero, Filtering the continuous wavelet transform using hyperbolic triangulations, in: 2019 13th International conference on Sampling Theory and Applications (SampTA), IEEE, 2019, pp. 1–4.
- [19] L. D. Abreu, Local maxima of white noise spectrograms and Gaussian Entire Functions, *J. Fourier Anal. Appl.* 28 (6) (2022) 88.
- [20] R. G. Stockwell, L. Mansinha, R. Lowe, Localization of the complex spectrum: the S transform, *IEEE transactions on signal processing* 44 (4) (1996) 998–1001.
- [21] R. Stockwell, Why use the S-transform, *Pseudo-differential operators: Partial differential equations and time–frequency analysis* 52 (2007) 279–309.
- [22] L. Riba, M. Wong, Continuous inversion formulas for multi-dimensional modified Stockwell transforms, *Integral Transforms and Special Functions* 26 (1) (2015) 9–19.
- [23] C. R. Pinnegar, L. Mansinha, The S-transform with windows of arbitrary and varying shape, *Geophysics* 68 (1) (2003) 381–385.
- [24] U. Battisti, L. Riba, Window-dependent bases for efficient representations of the Stockwell transform, *Applied and Computational Harmonic Analysis* 40 (2) (2016) 292–320.

- [25] N. Liu, J. Gao, B. Zhang, Q. Wang, X. Jiang, Self-adaptive generalized s-transform and its application in seismic time–frequency analysis, *IEEE Transactions on Geoscience and Remote Sensing* 57 (10) (2019) 7849–7859.
- [26] A. Moukadem, Z. Bouguila, D. Ould Abdeslam, A. Dieterlen, A new optimized Stockwell transform applied on synthetic and real non-stationary signals, *Digital Signal Processing* 46 (2015) 226 – 238.
- [27] Z. Zidelmal, H. Hamil, A. Moukadem, A. Amirou, D. Ould-Abdeslam, S-transform based on compact support kernel, *Digital Signal Processing* 62 (2017) 137–149.
- [28] D. Wei, Y. Zhang, Fractional Stockwell transform: Theory and applications, *Digital Signal Processing* 115 (2021) 103090.
- [29] Z. Huang, Y.-L. Xu, A multi-taper S-transform method for spectral estimation of stationary processes, *IEEE Transactions on Signal Processing* 69 (2021) 1452–1467.
- [30] D. Wei, Y. Zhang, Y.-M. Li, Linear canonical Stockwell transform: Theory and applications, *IEEE Transactions on Signal Processing* 70 (2022) 1333–1347.
- [31] F. A. Shah, A. Y. Tantary, Non-isotropic angular Stockwell transform and the associated uncertainty principles, *Applicable Analysis* 100 (4) (2021) 835–859.
- [32] Q. Guo, S. Molahajloo, M. Wong, Phases of modified stockwell transforms and instantaneous frequencies, *Journal of mathematical physics* 51 (5) (2010).
- [33] M. Hutníková, A. Mišková, Continuous Stockwell transform: Coherent states and localization operators, *Journal of Mathematical Physics* 56 (7) (2015) 073504.
- [34] I. Daubechies, T. Paul, Time–frequency localisation operators-a geometric phase space approach: II. The use of dilations, *Inverse problems* 4 (3) (1988) 661.

- [35] J. B. Hough, M. Krishnapur, Y. Peres, et al., Zeros of Gaussian analytic functions and determinantal point processes, Vol. 51, American Mathematical Soc., 2009.
- [36] D. J. Daley, D. Vere-Jones, An introduction to the Theory of Point Processes: Volume I: Elementary Theory and Methods, Springer, 2003.
- [37] J. Møller, R. P. Waagepetersen, Statistical inference and simulation for spatial point processes, CRC Press, 2003.
- [38] B. Pascal, R. Bardenet, Point processes and spatial statistics in time–frequency analysis (2024). arXiv:2402.19172.
URL <https://arxiv.org/abs/2402.19172>
- [39] L. D. Abreu, Remarks on isometric mappings between the Hardy–Szegő and Bergman–Selberg spaces: wavelet transforms and Laguerre functions, *Integral Transforms and Special Functions* 19 (7) (2008) 463–470.
- [40] M. Vetterli, J. Kovačević, V. K. Goyal, *Foundations of Signal Processing*, Cambridge University Press, 2014.
- [41] L. A. Escudero, N. Feldheim, G. Koliander, J. L. Romero, Efficient computation of the zeros of the Bargmann transform under additive white noise, *Found. Comput. Math.* 24 (1) (2024) 279–312.
- [42] J. M. Miramont, F. Auger, M. A. Colominas, N. Laurent, S. Meignen, Unsupervised classification of the spectrogram zeros with an application to signal detection and denoising, *Signal Processing* 214 (2024) 109250.
- [43] J.-B. Courbot, A. Moukadem, B. Colicchio, A. Dieterlen, Sparse off-the-grid computation of the zeros of STFT, *IEEE Signal Process. Lett.* (2023).