



**HAL**  
open science

# Impact of surface current and temperature feedback on kinetic energy over the North-East Atlantic from a coupled ocean / atmospheric boundary layer model

Théo Brivoal, Guillaume Samson, Hervé Giordani, Romain Bourdallé-Badie, Florian Lemarié, Gurvan Madec

## ► To cite this version:

Théo Brivoal, Guillaume Samson, Hervé Giordani, Romain Bourdallé-Badie, Florian Lemarié, et al.. Impact of surface current and temperature feedback on kinetic energy over the North-East Atlantic from a coupled ocean / atmospheric boundary layer model. *Dynamics of Atmospheres and Oceans*, 2024, 107, pp.101464. 10.1016/j.dynatmoce.2024.101464 . hal-04650173

**HAL Id: hal-04650173**

**<https://hal.science/hal-04650173v1>**

Submitted on 9 Oct 2024

**HAL** is a multi-disciplinary open access archive for the deposit and dissemination of scientific research documents, whether they are published or not. The documents may come from teaching and research institutions in France or abroad, or from public or private research centers.

L'archive ouverte pluridisciplinaire **HAL**, est destinée au dépôt et à la diffusion de documents scientifiques de niveau recherche, publiés ou non, émanant des établissements d'enseignement et de recherche français ou étrangers, des laboratoires publics ou privés.



Distributed under a Creative Commons Attribution 4.0 International License



# Impact of the current feedback on kinetic energy over the North-East Atlantic from a coupled ocean / atmospheric boundary layer model.

Théo Brivoal<sup>1,2</sup>, Guillaume Samson<sup>1</sup>, Hervé Giordani<sup>2</sup>, Romain Bourdallé-Badie<sup>1</sup>, Florian Lemarié<sup>3</sup>, Gervan Madec<sup>4,3</sup>

5 <sup>1</sup>Mercator Océan, Ramonville-Saint-Agne, 31520, France

<sup>2</sup>Université de Toulouse, Centre National de Recherches Météorologique (CNRM), Météo-France, CNRS, Toulouse, France

<sup>3</sup>Univ. Grenoble Alpes, Inria, CNRS, Grenoble INP, LJK, 38000 Grenoble, France

<sup>4</sup>Sorbonne Universités, CNRS, UPMC, IRD, MNHN, LOCEAN, Paris, France

10 *Correspondence to:* Théo Brivoal (theo.brivoal@mercator-ocean.fr)

## Abstract.

A one-dimensional Atmospheric Boundary Layer (ABL1D) is coupled with the NEMO ocean model and implemented over the Iberian–Biscay–Ireland (IBI) area at 1/36° resolution to investigate the retroactions between the surface currents and the atmosphere, namely the Current FeedBack (CFB) in this region of low mesoscale activity. The ABL1D-NEMO coupled model is forced by a large-scale atmospheric reanalysis (ERA-Interim) and integrated over the period 2016-2017.

The mechanisms of eddy kinetic energy damping and ocean upper-layers re-energization are realistically simulated, meaning that the CFB is properly represented by the model. In particular, the dynamical coupling coefficients between the curls of surface stress / wind and current are in agreement with the literature.

The effects of CFB on the kinetic energy (KE) are then investigated through a KE budget. We show that the KE decrease induced by the CFB is significant down to 1500m. Near the surface (0 – 300m), most of the KE decrease can be explained by a reduction of the surface wind work by 4%. At depth (300 – 2000m), the CFB induce a reduction of the pressure work (i.e: the PE to KE conversion) associated with a reduction of KE which is significant down to 1500m. We show that this reduction of KE at depth can be explained by CFB-induced Ekman pumping above eddies that weakens the mesoscale activity and this over the whole water column.

25

30



## 35 1 Introduction

Global ocean operational systems have recently initiated a transition towards mesoscale-resolving resolutions (scales of ten to hundred kilometres). The advent of satellite scatterometers measurement of the surface wind speed has provided evidence that the signature of mesoscale activities can be clearly seen in the wind stress fields. At mesoscale, a positive correlation is found between Sea Surface Temperature (SST) and surface wind stress (Wentz et al., 2000; Chelton and Wentz, 2005), suggesting that the ocean is driving the atmosphere, whereas the atmosphere drives the ocean response at larger scale (Liu et al., 1994). At mesoscale, the atmospheric adjustment to the current and SST anomalies associated with the ocean eddy field (Small et al., 2008) sets up through the surface heat and momentum fluxes (e.g: Chelton et al., 2001; Bourras et al., 2004; Samelson et al., 2006; Chelton and Xie, 2010; Frenger et al., 2013; O’Neill et al., 2012; Renault et al., 2016).

The surface wind-stress is often computed as a function of the absolute wind  $U_a$ , which amounts to consider that the ocean is motionless, whereas it should be function of the relative wind ( $U_a - U_o$ ) (Bye, 1986; Dewar and Flierl, 1987). The induced surface current wind-stress change is called “*Stress Current FeedBack*” (CFB\_stress). On average and at a global scale, the CFB\_stress has moderate effects since it reduces the wind stress and heat fluxes by 1 – 7 % (Dawe and Thompson, 2006; Duhaut and Straub, 2006) and the wind-work input by 20 – 35 % (Dawe and Thompson, 2006; Duhaut and Straub, 2006) in forced simulations mode.

At large scale, the reduction of wind-work by currents causes a slowdown in the general oceanic circulation (e.g: Pacanowski, 1987; Luo et al., 2005; Renault et al., 2016a, 2017), whereas at mesoscale it induces of loss of kinetic energy towards the atmosphere through negative eddy wind-work because of opposed wind stress curl and current vorticity anomalies in eddies (Rooth and Xie, 1992; Renault et al., 2016b; Oerder et al., 2018). In forced simulations mode, this may lead to a reduction of the Eddy Kinetic Energy (EKE) from 10 to 50% depending on regions (e.g : Duhaut and Straub, 2006; Zhai and Greatbatch, 2007; Yu and Metzger, 2019) . Besides, the current – stress interaction can also modify the eddies structure and thus the Ekman pumping through the current feedback (Gaube et al., 2014; Seo et al., 2015; Oerder et al., 2018) with the result of increasing the stratification near the bottom of the mixed layer by up to 10% (Song et al., 2020).



65

In forced simulations mode, the wind cannot adjust to the change in surface stress caused by the currents. The difference of inertia between the ocean and the atmosphere may introduce significant error in the prescribed atmospheric field because the atmosphere reacts much faster than the ocean.

70

In coupled models, the wind can adjust and a positive linear relationship is found between the surface wind and current curls (Renault et al., 2016b), which partially re-energizes the ocean, leading to more realistic EKE levels (Renault et al., 2016b, 2019; Jullien et al., 2020). This atmospheric response that re-energizes the ocean is called “*Wind Current FeedBack*” (CFB\_wind). In coupled mode, the “*Total Current FeedBack*” (CFB\_tot) is the sum of CFB\_stress and CFB\_wind, which are

75

the oceanic and atmospheric retroaction loops, respectively. The kinetic energy damping caused by the current feedback exhibits a strong regional variability and is related to both mean wind intensity and EKE (Jullien et al., 2020). A proper representation of the current feedback improves the realism of simulated structures such as the Gulf-Stream separation and post-separation at Cape Hatteras (Renault et al., 2016a) or the position of the Agulhas current retroflexion (Renault et al., 2017a), therefore influencing the regional and global climate systems. However, the effect of CFB on less dynamical regions

80

remains poorly documented. Correct current feedback representation (i.e. representing CFB\_tot instead of CFB\_stress only) necessitates both an ocean models resolving mesoscale fields and an atmosphere model at the ocean model effective resolution (Jullien et al., 2020), but the computational cost of such configurations remains limiting for long term analysis and operational perspectives.

Alternative approaches to mimic the full current feedback are to parameterize the atmospheric retroaction of the current feedback in forced models (Renault et al., 2017b), or to use simplified atmospheric models, which aim at resolving the wind response to the surface properties and thus representing the atmospheric loop of the current feedback mechanism. In this study, we use a one-dimensional atmospheric boundary layer model (ABL1D; Lemarie et al., 2020) to simulate the temperature, the humidity and the wind changes generated by turbulent processes at play in the planetary boundary layer. The ABL1D model was validated on idealized test cases and was recently implemented within the NEMO ocean model (Lemarie et al., 2020)

85

The present paper aims at presenting the validity of the ABL1D model in the North-eastern Atlantic, which is a region of low mesoscale activity, and to investigate the current feedback effects on the circulation and kinetic energy budget in this region. Coupled and forced twin experiments with absolute and relative winds are performed and compared over the two-year period 2016-2017 to validate the ABL1D winds with observations and the current – wind-stress coupling coefficients (Renault et al., 2016a). The associated changes of behaviour are discussed using an online KE budget.

90

95



100

## 2 Numerical models

### 2.1 ABL1D

The ABL1D model is a single column model that reproduces the turbulent processes within the Planetary Boundary Layer (PBL). The single-column formulation is valid under the following hypothesis: i) Horizontal homogeneity ( $\partial x = \partial y = 0$ ), ii) the atmosphere within the ABL is transparent and iii) vertical motions are neglected ( $w=0$ ). However, these approximations can be compensated by nudging the model prognostic variables towards the large-scale ones. The equations set of the ABL1D model is written as follows (Lemarié et al., 2020):

$$\partial_t \overline{\mathbf{U}}_h = -f \mathbf{k} \times (\mathbf{U}_h - \mathbf{U}_{geo}) + \partial_z (K_m \partial_z \mathbf{U}_h) \quad (1)$$

$$\partial_t \theta = \partial_z (K_s \partial_z \theta) + \lambda_s (\theta - \theta_{LS}) \quad (2)$$

$$\partial_t q = \partial_z (K_s \partial_z q) + \lambda_s (q - q_{LS}) \quad (3)$$

Where  $\mathbf{U}_h$  is the horizontal wind vector,  $q$  is the specific humidity and  $\theta$  is the potential temperature,  $K_m$  and  $K_s$  are the turbulent viscosity and diffusivity coefficients.  $\mathbf{U}_{geo}$  is the geostrophic wind vector,  $\theta_{LS}$  and  $q_{LS}$  are the large-scale variables potential temperature and humidity, respectively, and  $\lambda_s$  is a nudging term to relax the prognostic variables toward the large-scale atmospheric state. The large-scale variables are typically prescribed from an Atmospheric Global Circulation Model (AGCM). Here, the ERA-interim atmospheric reanalysis (Dee et al., 2011) dataset is used to force both the ABL1D model (for  $u$ ,  $v$ ,  $\theta$  and  $q$ ) and the ocean model in forced configurations.

For the dynamics, the assumption is that the ageostrophic part of the dynamics is only related to the turbulence within the PBL and is consequently resolved by ABL1D. The large-scale motions are approximated as geostrophic and the geostrophic wind  $U_{geo}$  is computed under the hydrostatic equilibrium hypothesis from the Mean Sea Level Pressure (*MSLP*) field obtained from ECMWF datasets through a preprocessing tool that takes into input the forcing fields  $u$ ,  $v$ ,  $\theta$  and  $q$  and *MSLP* (see Lemarié et al. 2020 for more details).

ABL1D computes  $u$ ,  $v$ ,  $\theta$  and  $q$  evolutions between the surface and 2000 m. Other forcing fields such as the radiative fluxes, precipitation and surface pressure are prescribed to the ocean surface and remain unchanged compared to the usual forced mode. The differences between ABL1D winds and ERA-interim large-scale winds can originate from different effects which are changes in the vertical shear due to surface stress modification by the currents or SST-induced drag coefficient changes, SST-induced buoyancy changes, differences in the turbulence parameterization (CBR, Cuxart et al., 2000) and unresolved processes in ABL1D.

125



130 The tracers are nudged towards large-scale data by using a relaxation coefficient which varies with altitude. Although the  
ABL1D is able to reproduce the SST feedback on the buoyancy in the PBL, we chose a relaxation coefficient for the tracers  
equal to the model time step ( $\Delta t=150s$ ). As a consequence, the tracers are not modified by the ABL1D in order to focus on the  
vertical wind shear changes in the PBL induced by surface conditions. In the frame of this experimental setup, ABL1D winds  
are only modified by surface conditions though current-induced surface wind-stress changes or drag coefficient-induced SST  
135 changes. Note that the turbulent heat fluxes also depend on the SST and the wind speed and are consequently modified by the  
ABL1D model.

To compute the vertical eddy viscosity and diffusivity coefficients,  $K_m$  and  $K_s$ , the turbulent closure scheme implemented in  
ABL1D is derived from the CBR-1D scheme of (Cuxart et al., 2000). The viscosity and diffusivity coefficients are computed  
from the total kinetic energy  $e$  and the mixing length  $L$  as:  $K_s = \frac{2}{3} \frac{L}{c_s} \phi_z \sqrt{e}$ ,  $K_m = \frac{4}{15} \frac{L}{c_m} \sqrt{e}$ .

140 Where  $C_e = 0.4$  and  $C_m = 4$  and the stability function  $\phi_z$  is defined as:

$$\phi_z(z) = \left( 1 + \left\{ \frac{C_1 L^2 N^2}{e}, -0,5455 \right\} \right)^{-1} \quad (4)$$

The mixing length  $L$  is computed using an adaptation of the NEMO algorithm (Sec. 10.1.3 in Madec, 2012) in which the  
mixing length is computed from the Deardorff (1980) scheme, where  $L$  depends on the Brünt-Vaisala frequency  $N^2$  and the  
total kinetic energy and then limited such that they stay smaller than the variations of height (Lemarié et. al. 2020).

The vertical grid of the model has 50 vertical levels. From the surface to 200m, the grid resolution is about 20 m, then increases  
145 monotonically from 20m to 90m at the top (2000m). The ABL1D model has the same time step ( $\Delta t=150s$ ) and horizontal grid-  
mesh ( $\Delta x=1/36^\circ \approx 3$  km) as the NEMO ocean model. As the model is directly implemented within the NEMO model, no  
model coupler is required for coupling the ABL1D with NEMO.

150

155



160 **2.2 Ocean model (NEMO 3.6)**

The ocean component, based on the primitive equations, is the Nucleus for European Modelling of the Ocean (NEMO, Madec, 2009) in its version 3.6. NEMO is implemented over the IBI (Iberian, Biscay, Ireland, Maraldi et al., 2013) area at  $1/36^\circ$  horizontal resolution. The horizontal grid is a subdomain of the tripolar grid ORCA (Madec, 2009) on the North-East Atlantic shelf. The model has 50 vertical levels with a stretching ranging from 1m in the first 10 meters to more than 400m in the deep  
165 ocean. The baroclinic time step is 150 s.

One day averages of the global analysis PSY4V3R1 at  $1/12^\circ$  resolution are used as lateral boundary conditions of the IBI domain. The forcing associated with tides is represented by 11 tidal harmonics (M2, S2, N2, K1, O1, Q1, M4, K2, P1, Mf, Mm) provided by FES2004 (Lyard et al., 2006) and TPXO7.1 (Egbert and Y. Erofeeva, 2002) data sets. Freshwater runoff is implemented as lateral boundary conditions for 33 rivers which is based on a blended product derived from observations  
170 (PREVIMER project), simulated data (SMHI E-HYPE hydrological model) and climatology (Bourdallé-Badie and Treguier, 2006).

The vertical mixing is parameterized by a k- $\epsilon$  model implemented in the generic form proposed by Umlauf and Burchard, (2003). At the air-sea interface, the fluxes are computed using the ECMWF bulk algorithm (Beljaars, 1995) from the AEROBULK package (Brodeau et al., 2017, <https://github.com/brodeau/aerobulk>). This regional configuration details and  
175 validation can be found in Maraldi et. al. (2013).

180

185

190



### 2.3 Simulation design

Two sets of twin experiments in forced and coupled mode have been performed over the period from the 19<sup>th</sup> December 2015 to the 31<sup>st</sup> December 2017. The two sets differ in the way the surface wind-stress is computed, either using absolute winds or relative winds. All simulations are forced with the same ERA-interim fields which have a temporal resolution of 6h and a horizontal resolution of  $\frac{3}{4}^\circ$ .

In the spirit of Renault et al., (2016b) the behaviour of the ABL1D model regarding the CFB mechanism is investigated in two coupled (ABL1D-NEMO) simulations, the first one with surface current (ABL\_REL) and the second one with no surface current (ABL\_ABS) in the surface wind-stress formulation. Two additional reference ocean simulations forced directly by ERA-interim data are also performed with absolute wind (FRC\_ABS) and relative wind (FRC\_REL). A summary of these four simulations setups can be found in Table 1.

Differences between FRC\_ABS and FRC\_REL are only caused by the CFB\_stress mechanism, whereas the differences between ABL\_ABS and ABL\_REL are caused by the total CFB (CFB\_tot). The wind differences between ABL\_ABS and FRC\_ABS are attributable to the turbulence parameterizations used in ABL1D and to the ERA-i data assimilation procedure for one part and for another part to non-resolved dynamical processes in ABL1D. The wind difference between ABL\_REL and FRC\_REL is attributable to the same processes, with the additional impact of the CFB\_wind effect and the SST-induced drag coefficient changes. However, the drag coefficient change generally has a weak impact on the surface wind-stress (e.g: O'Neill et al., 2012). All simulations were initialized from the same ABL ABS simulation which were performed over the period from the 1<sup>st</sup> January 2015 to 19<sup>th</sup> December 2015. This 11-month “spinup” simulation were initialized from the IBI MFC ocean analysis and forecast system at  $1/36^\circ$ , where sea level, SST and in-situ T-S profiles were assimilated. When compared with forced simulation, the computational cost of ABL1D - NEMO simulations is increased by 12%.

Simulation	Atmospheric conditions	Absolute / Relative winds	Current feedback
ABL_ABS	ABL1D – ERA-interim	Absolute	No
ABL_REL	ABL1D – ERA-Interim	Relative	CFB_stress + CFB_wind
FRC_ABS	ERA-interim	Absolute	No
FRC_REL	ERA-Interim	Relative	CFB_stress

**Table 1: Summary of the differences between experiments**





### 3 Results

#### 3.1 Validation

ABL1D winds are evaluated against L4 ASCAT reprocessed satellite dataset (Bentamy et al., 2012, [http://products.cersat.fr/details/?id=CER\\_WND\\_GLO\\_1D\\_025\\_ASCAT](http://products.cersat.fr/details/?id=CER_WND_GLO_1D_025_ASCAT)). This dataset is a blended product from regridded observations of two scatterometers ASCAT-A and ASCAT-B (onboard the METOP-A and METOP-B satellites) and ERA-interim reanalysis. ASCAT winds are daily products with a spatial resolution of  $0.25^\circ$ . Details related to data, methodology, and product accuracy issues can be found in Bentamy et al., (2012).

In order to compare the simulated winds with various observation products, model equivalent-neutral winds  $u_n$  are computed as follows (Hersbach, 2010):

$$u_n(z) = \frac{u_*}{\kappa} \log \left( 1 + \frac{z}{z_0} \right) \quad (5)$$

Where  $u_*$  is the friction velocity in m/s,  $\kappa = 0.41$  is the Von Karman constant,  $z$  is the wind height (taken equal to 10 m here) and  $z_0$  is the roughness length in m. Stress-equivalent wind  $u_s$  is then computed from the equivalent-neutral winds following de Kloe et al., (2017):

$$u_s = \sqrt{\frac{\rho_a}{\rho_{a_0}}} u_n \quad (6)$$

Where  $\rho_a$  is the air density,  $\rho_{a_0} = 1,22 \text{ kg/m}^3$ . Finally,  $u_s$  is regridded with a bilinear interpolation on the ASCAT grid.

Figure 1.a presents the binned scatterplots of ABL1D and ERA-I surface daily stress-equivalent wind versus ASCAT wind. Data near the coast ( $< 150 \text{ km}$ ) have been masked to avoid coastal contamination and accuracy issues. The mean difference between ABL\_ABS and ABL\_REL winds is small ( $< 0.1 \text{ m/s}$ ) and the Root Mean Square Difference (RMSD) between the two simulations is equal to  $0.08 \text{ m/s}$  as the currents are much smaller than the total winds and the remapping towards ASCAT grid may damp the current-induced wind anomalies.

When compared with ASCAT, ABL simulated stress-equivalent winds are globally stronger with a RMSE of  $1.98 \text{ m/s}$  and a mean difference with ASCAT of  $+0.29 \text{ m/s}$  ( $+3.6\%$ ). On the other hand, ERA-Interim stress-equivalent winds are weaker, with a standard deviation of  $1.43 \text{ m/s}$  and a mean difference with ASCAT of  $-0.27 \text{ m/s}$  ( $-3.2\%$ ). Discrepancies between ABL, ERA-interim and observations increase with wind intensity. Globally, ABL1D produces realistic wind for magnitudes weaker than  $15 \text{ m/s}$  and overestimates stronger winds. ABL wind differences with ASCAT increase from  $2$  to  $4 \text{ m/s}$  beyond  $16 \text{ m/s}$ , but the occurrence of these strong winds is very weak over the IBI domain. Such overestimation of strong winds could be related to the choice of the bulk parameterization or to the effect of waves on drag coefficient which is not represented in our experiments.

Although winds are stronger in winter than in summer over the IBI area (Fig. 2.a), no significant seasonal cycle is observed on the wind speed bias (Fig. 2.b). The mean bias is ranging from  $-0.3 \text{ m/s}$  to  $+0.7 \text{ m/s}$  ( $-4\%$  to  $+9\%$ ) for ABL1D and  $-0.5 \text{ m/s}$



245 to +0.1 m/s (-6% to + 1%) for ERA-interim. Again, differences between ABL\_ABS and ABL\_REL are very small in Fig. 2 as the winds are averaged over the whole domain and the currents mostly have an impact on wind mesoscale anomalies.

No specific tuning has been carried out regarding the simulated wind performances. The PBL height computed by the ABL1D model is ~30% higher in ABL simulations than in FRC and thus induces stronger vertical mixing and surface winds. Hence, it would be possible to achieve a better agreement with observations by tuning the several parameters from the TKE vertical diffusion scheme as large uncertainties remain regarding these values (Cuxart et al., 2000; Cheng et al., 2002). Illustrations of this sensitivity can be found in the idealized test cases presented in Lemarié et al. 2020.

Assumption is made here that the main source of ageostrophy is through surface turbulent processes. Under such hypothesis, geostrophic winds computed from ERA-interim should be similar to the total ERA-interim winds at the top of the PBL, which is not always the case as we found geostrophic winds stronger than total winds at the top of the PBL on average (not shown).

### 255 3.2 Current feedback in coupled and forced modes

ABL1D ability to simulate air-sea interactions at mesoscale can be evaluated by computing various coupling coefficients proposed in previous studies (e.g: Bryan et al., 2010; Chelton et al., 2007; Renault et al., 2016b).

Regarding dynamical feedbacks, the coupling coefficients  $S_\tau$  and  $S_w$  (Renault et al., 2016b) are the coefficients of the linear regressions between curl anomalies of the surface current and the surface wind stress and between curl anomalies of the surface current and the 10m wind speed, respectively. The mesoscale anomalies are isolated by filtering spatially the large-scale structures of the fields. For a field  $\Phi$ , mesoscale  $\Phi'$  anomalies are defined as  $\Phi' = \Phi - \Phi_{LS}$  where  $\Phi_{LS}$  is the large-scale component of the field. The large scale component signal  $\Phi_{LS}$  is obtained as in previous studies (Chelton et al., 2007; Oerder et al., 2016; Renault et al., 2016b) from the field  $\Phi$  by applying a high-pass Gaussian spatial filter on  $\Phi$ . The spatial window area considered for the filter ( $6\sigma + 1 * 6\sigma + 1$  with  $1^\circ * 1^\circ \sigma$ ) corresponds to a cut-off of 150km and is used to remove the large-scale signal from the wind/stress and current fields. Similar to Chelton et al. (2007), the weather-related variability is removed by applying a running monthly average with a 29-days window. Finally, the statistical relationship between surface wind (stress) and surface current curls is then evaluated with binned scatterplots. The slope of the linear regression between surface current and surface wind (stress) curls corresponds to the coupling coefficients  $S_w$  ( $S_\tau$ ).

Most studies on CFB (e.g: Jullien et al., 2020; Renault et al., 2016b, 2017b) use the geostrophic  $S_w$  and  $S_\tau$  (i.e: the slope of the linear regression between of the curl of the geostrophic currents and the curl of the surface wind/stress). However, no significant differences are found between geostrophic  $S_\tau$  and  $S_w$  and the total  $S_\tau$  and  $S_w$  in our simulations. Hence, the coupling coefficients here are directly compared to the geostrophic  $S_\tau$  and  $S_w$  in the literature. The values of the coupling coefficients computed in the different experiments are summarized in Table 2.

275



Period	$S\tau$			$S_w$			CFB
	2016 – 2017 period	Summer (JJA)	Winter (DJF)	2016 – 2017 period	Winter (DJF)	Summer (JJA)	
FRC_ABS	~0	~0	~0	~0	~0	~0	No
FRC_REL	-0.027	-0.019	-0.035	~0	~0	~0	CFB_stress
ABL_ABS	~0	~0	~0	~0	~0	~0	No
ABL_REL	-0.017	-0.012	-0.022	0.333	0.345	0.338	CFB_stress + CFB_wind

**Table 2: Dynamical coupling coefficients obtained for all simulations, averaged by season or for the all the 2016 – 2017 period of simulation and over the whole IBI area.**

280 In FRC\_ABS and ABL\_ABS simulations,  $S\tau$  is close to zero because the currents are not taken into account in the surface stress. When currents are considered in the surface stress (FRC\_REL and ABL\_REL),  $S\tau$  becomes negative (-0.027 N.s.m<sup>-3</sup> for FRC\_REL and -0.017 N.s.m<sup>-3</sup> for ABL\_REL) because the curls of surface stress and current anomalies are opposed.

In FRC\_REL and FRC\_ABS,  $S_w$  is equal to 0 as the winds does not respond to the surface stress anomalies.

285 A positive correlation is obtained between the curls of the surface wind and surface current ( $S_w = 0.33$ ) as the wind curl adjusts to the surface stress change and accelerates over positive current anomalies (and inversely). This wind response induces a coupling coefficient  $S\tau$  less steep in ABL\_REL (-0.017 N.s.m<sup>-3</sup>) than in FRC\_REL (-0.027 N.s.m<sup>-3</sup>). Therefore, the negative relationship between surface current and stress is partially damped by CFB\_wind. This adjustment mechanism is consistent with those described in the literature (e.g: Bye, 1986; Duhaut and Straub, 2006; Gaube et al., 2014; Renault et al., 2016b; Rooth and Xie, 1992) and provides an advanced validation of the ABL1D model.

290 In FRC\_REL and ABL\_REL,  $S\tau$  are almost two times stronger in winter (-0.035 N.s.m<sup>-3</sup> and -0.022 N.s.m<sup>-3</sup> respectively) than in summer (-0.019 N.s.m<sup>-3</sup> and -0.012 N.s.m<sup>-3</sup> respectively) (Table 2). Such seasonal changes can be attributed to the seasonal variability of the large-scale wind. Indeed, we find a linear negative relationship between  $S\tau$  and the total wind speed with regression coefficients of -0.0044 N.s<sup>2</sup>.m<sup>-4</sup> and -0.0023 N.s<sup>2</sup>.m<sup>-4</sup> in FRC\_REL and ABL\_REL respectively (Fig. 3.). These values are close to estimations which can be found in theoretical studies (Bye, 1986; Duhaut and Straub, 2006; Gaube et al., 2014; Renault et al., 2017b; Rooth and Xie, 1992) and to numerical estimations deduced from global coupled ocean-atmosphere models (Jullien et al., 2020; Renault et al., 2019). These results reflect again the ability of ABL1D to realistically represent CFB\_tot compared to observations and fully coupled Global Circulation Models (GCM).



305 From a spatial point of view,  $S\tau$  is negative almost everywhere, except in areas of very low EKE as the continental shelf for ABL\_REL and FRC\_REL (Fig. 4). Positive  $S\tau$  over shallow seas could be related to the bottom stress which changes the ocean-atmosphere coupling behaviour or to the intense tidal motions in the area and should be further addressed in future studies.  $S\tau$  is more negative in FRC\_REL than in ABL\_REL and the strongest  $S\tau$  values are found in the North-west. In this part of the IBI area, large-scale winds are usually stronger and induces a more negative  $S\tau$ .

### 3.3 Current feedback impact on kinetic energy budget

#### 3.3.1 Impact on the surface kinetic energy

310 The zonal and meridional components of the geostrophic current  $u_g$  and  $v_g$  are computed from the Sea Surface Height (SSH) and the geostrophic kinetic energy  $KE_g$  is computed as:

$$KE_g = \frac{1}{2} (u_g^2 + v_g^2) \quad (7)$$

The mesoscale geostrophic Eddy Kinetic Energy ( $EKE_g$ ) is obtained by replacing  $u_{geo}$  and  $v_{geo}$  from Eq. 7 by the mesoscale components of the current  $u_g'$  and  $v_g'$  computed from the SSH mesoscale anomalies obtained as described in 3.2. The geostrophic Mean Kinetic Energy ( $MKE_g$ ) is obtained by subtracting  $EKE_g$  from  $KE_g$ .

315 The CFB decreases  $KE_g$  through a reduction of the surface wind-work (Dewar and Flierl, 1987; Duhaut and Straub, 2006; Renault et al., 2016b). In particular, the difference between the coupled simulations (ABL\_REL-ABL\_ABS) gives an estimation of the  $KE_g$  reduction around 19%, which is induced by the CFB\_tot (Fig. 5.b). The  $KE_g$  decrease occurs during an adjustment phase from the simulation start and lasting approximately 3 months.

320 In terms of magnitude, the  $KE_g$  difference FRC\_REL - FRC\_ABS (-31%) is significantly greater than ABL\_REL - ABL\_ABS (-19%, Fig. 5.b) because of the atmospheric response (i.e: CFB\_wind) which partially re-energize the ocean in ABL\_REL. Indeed, in absence of any response of the surface winds to the surface stress conditions, as it is the case in FRC\_REL, such stronger winds would imply a stronger  $KE_g$  reduction as the efficiency of the  $KE_g$  damping through CFB\_stress increases with the wind amplitude (Bye, 1986; Duhaut and Straub, 2006; Renault et al., 2017b; Rooth and Xie, 1992).

325 As the  $EKE_g$  component represents ~80% of the total  $KE_g$  over the IBI area, most of the  $KE_g$  decrease between ABL\_REL and ABL\_ABS is related to the “eddy” CFB-induced change (Fig. 5.b,c). The  $KE_g$  damping remains stronger at mesoscale (-28% for FRC and -18% for ABL) but the current feedback also impacts scales larger than 150km since a reduction of the  $MKE_g$  component is observed (-9% for FRC and -5% for ABL).

330 The Mediterranean-sea and the North Atlantic drift have the strongest levels of  $KE_g$  in the IBI area (Fig. 6.a). However, the relative  $KE_g$  differences between ABS and REL simulations “FRC\_REL - FRC\_ABS” and “ABL\_REL - ABL\_ABS” are almost quasi-homogeneous over the whole IBI area for both forced and ABL simulations, except over the continental shelf where the difference of KE is near 0 and daily averaged currents very weak (Fig. 6.b.c).



### 3.3.2 KE budget

335 To understand how the CFB affects the ocean kinetic energy over the whole water column, this section presents a budget of KE which is computed online the NEMO model. Only ABL\_REL and ABL\_ABS simulations are considered here. A derivation of the Kinetic Energy equation can be written as follow:

$$\frac{\partial KE}{\partial t} = ADV + PW + ZDF + HDF + STR \quad (8)$$

Where ADV is the 3D advection of KE, PW is the pressure work term, ZDF and HDF are the vertical and lateral viscous dissipation and diffusion terms, respectively, and STR is the stress term. We integrate the KE budget over two domains, a surface layer,  $\mathcal{D}_1$ , and a “deep layer”,  $\mathcal{D}_2$ , defined by a bathymetry greater than 2000m and a vertical extension of 0-300m for  $\mathcal{D}_1$  and 300-2000m for  $\mathcal{D}_2$ . These two budgets are further integrated over a 1-year period, from April 2016 to April 2017.

We found that at the boundaries of  $\mathcal{D}_1$  and  $\mathcal{D}_2$  the advection of KE and pressure as well as the KE horizontal and vertical diffusive fluxes are negligible. Therefore, the domain-integrated KE trends over a domain  $\mathcal{D}_i$  reduce to:

$$\begin{aligned} ADV|_{\mathcal{D}_i} &\approx 0 \\ ZDF|_{\mathcal{D}_i} &= - \int_{\mathcal{D}_i} U_h \frac{\partial}{\partial z} \left( A_v \frac{\partial U_h}{\partial z} \right) dV \approx - \int_{\mathcal{D}_i} A_v \left| \frac{\partial U_h}{\partial z} \right|^2 dV \\ HDF|_{\mathcal{D}_i} &\approx - \int_{\mathcal{D}_i} U_h \cdot \Delta_h (A_h \Delta_h U_h) dV \approx - \int_{\mathcal{D}_i} A_h |\Delta_h U_h|^2 dV \\ PW|_{\mathcal{D}_i} &= \int_{\mathcal{D}_i} \frac{1}{\rho_0} U_h \cdot \nabla P dV \approx \int_{\mathcal{D}_i} \rho g w dV \\ STR|_{\mathcal{D}_1} &= \int_{S_1} \frac{1}{\rho_0} \tau \cdot U_h dS \text{ and } STR|_{\mathcal{D}_2} = 0 \end{aligned} \quad (9)$$

Where  $i = 1$  or  $2$ ,  $U_h = (u, v)$  where  $u$  and  $v$  are the zonal and meridional currents,  $P$  is the pressure,  $A_v$  and  $A_h$  are the turbulent vertical and horizontal viscosity coefficient for momentum and  $\tau$  is the surface wind stress. Note PW reduces to the Potential energy (PE) to KE conversion term.

In the surface layer, the only source of KE over the IBI area is STR, whereas PW, ZDF, HDF are sinks of KE (Fig. 7.a). The PW term, which is a sink of KE in the surface layer, becomes the main source of KE in the “deep layer”. This shows that the flow is mostly driven by pressure at depth as the PW term indicates that the PE to KE conversion is the main source of KE in the deep layer. In this layer, PW is mainly balanced by HDF (Fig. 7.b) while other terms (ZDF and STR) are negligible.

The KE budget is nearly balanced in the surface layer when averaged over the period considered (Fig. 7.a) and Eq. (8) can be considered as stationary. Note that the KE budget below the surface layer is not balanced and this could be related to a longer duration of the spinup period at depth. (Fig. 7.b).

The reduction of KE caused by the CFB in ABL\_REL is stronger in the surface layer [0 and 300m] than deeper. However, it is noteworthy that this reduction occurs down to 1500 m depth (Figure 8.).



In the surface layer, the CFB reduces the KE input through STR by approximately 4%. This forces a slowdown of the current in upper-layers and thus a reduction of viscous dissipation terms ZDF and HDF. The KE to PE conversion through PW is also strongly reduced in the surface layer of ABL\_REL. PW plays a strong role in maintaining the balance between sources and sinks of KE as it represents 60% of the total reduction of KE sinks (PW + HDF + ZDF) in the surface layer, whereas ZDF and  
360 HDF contributions are much smaller (25% and 15% respectively). At depth, STR vanishes rapidly as a result of viscous dissipation and cannot explain the KE decrease in the deep layer. In the “deep layer”, the KE input through PE to KE conversion (PW) is reduced by 7% and the balance is maintained by a reduction of HDF by 5% (Fig 7.d).

At the ocean surface, the CFB induces surface stress curl anomalies opposed to that of the eddy and the associated Ekman pumping/suction tends to attenuate the horizontal pressure gradients and thus the eddies (Gaube et al., 2014; Seo et al., 2016).  
365 Following Gaube et al. (2014), and since we found no significant changes in the background Ekman pumping (not shown), we examine the changes in the Ekman pumping anomalies induced by the local surface current effect on the relative wind, which is computed as follows:

$$\widetilde{W}_{ek} = \frac{\nabla \times \tilde{\tau}}{\rho_0 (f + \zeta)} \quad (10)$$

Where  $f$  is the Coriolis frequency,  $\rho_0$  is the average density of seawater,  $\zeta$  is the geostrophic current vorticity and  $\tilde{\tau}$  is the mesoscale anomalies of the surface wind stress, obtained as in part 3.2. For ABL\_REL, mesoscale anomalies of Sea Surface  
370 Height (SSHa) are positively correlated with the Ekman pumping velocity anomalies whereas no correlation is observed for ABL\_ABS (Figure 9.), meaning that anticyclones (cyclones) are associated with upward (downward) anomalies of Ekman pumping velocities.

375

Above anticyclones - associated with a negative anomaly of pressure at their centre - current/stress interaction induce a cyclonic stress anomaly that will pump cold water upwards, and inversely for a cyclonic eddy. As a result, the CFB tends to reduce the horizontal pressure gradients at mesoscales and thus the geostrophic currents, therefore explaining the KE decrease in the deep  
380 layer, which is significant down to 1500m depth. By modifying the mass distribution through Ekman pumping anomalies, the current feedback, only active near the surface, has an indirect impact on the circulation and this over the whole water column. The KE reduction is observed deeper during winter (not shown). This is coherent with the results shown in Table 2 as the stronger  $\text{St}\tau$  found in winter imply that the curl anomalies of the surface currents associated with eddies induce stronger surface stress curl anomalies (and therefore stronger Ekman pumping velocities). As a consequence, the damping of the pressure  
385 gradient is stronger during winter.



### 3.3 Conclusion

The coupling between the ocean and the atmosphere associated with the surface current, CFB\_tot, is composed of an oceanic retroaction loop (CFB\_stress) induced by the surface current on the wind-stress and of an atmospheric retroaction loop (CFB\_wind) induced by the wind adjustment to the wind-stress change. A one-dimensional atmospheric boundary layer model is used to unravel the two components CFB\_stress and CFB\_wind of CFB\_tot and to investigate impacts of CFB\_tot on the kinetic energy budget in the North-East Atlantic, which is an area of low KE. In that way, ABL1D can be viewed as a practical and efficient tool to study mesoscale ocean-atmosphere dynamical coupling processes.

In agreement with former studies, a partial re-energization of the ocean upper-layers, held by CFB\_wind, is active when the ocean is coupled with ABL1D. The model reproduces a similar relationship between the curls of the current and wind/stress as in theoretical studies or fully coupled models (e.g : Bye, 1986; Duhaut and Straub, 2006; Gaube et al., 2014; Jullien et al., 2020; Renault et al., 2016b, 2017b, 2019; Rooth and Xie, 1992). Moreover, the coupling coefficient  $St$  increases with the large-scale wind speed in agreement with previous studies based on satellite observations (Renault et al., 2017b) and full coupled models (Jullien et al., 2020). These results show that representing the vertical wind shear changes in the PBL induced by surface conditions is a key process for a proper representation of CFB\_tot.

The current feedback impact on the KE budget is investigated by integrating the KE trends over a surface layer from the surface down to 300m and over a “deep layer” (300m – 2000m). In the surface layer, the CFB affects the KE budget by decreasing the surface wind work which is mainly balanced by a reduction of the vertical mixing and the pressure work (i.e: the production of Potential Energy, PE). In the deep layer, the pressure work switches as a source of KE which is mainly balanced by the lateral diffusion term. We show that the CFB induce a reduction of the pressure work (i.e: the PE to KE conversion) in the deep layer associated with a reduction of KE which is significant down to 1500 m. This reduction can be explained by the CFB-induced Ekman pumping above eddies: as the polarity of the surface stress curl is opposed to the eddy vorticity, the CFB induces an Ekman pumping that tends to attenuate the eddies and thus the horizontal pressure gradients (Gaube et al., 2014; Seo et al., 2016). Through geostrophic balance, the reduction of the horizontal pressure gradients induces a decrease of the geostrophic currents and this over the whole water column.

Despite several limitations related to unresolved PBL processes in the ABL1D model (SST-induced changes in the cloud physics, unrepresented advective horizontal and vertical processes and SST-induced pressure gradient modifications), the ABL1D model is a powerful tool for oceanography as its small computational cost (only 12% more than a forced simulation) allows a representation of key turbulent processes within the PBL at the same horizontal and temporal resolution as in the ocean model. Several features of the CFB remain to be investigated in the IBI area. In particular, intense tidal motions on the continental shelf might have strong implications on the behaviour of the CFB in the area and will be investigated with the ABL1D model in a future study.



### Code and data availability

420 The IBI36 configuration used here is based on the NEMO 3.6 version which is freely available at <https://www.nemo-ocean.eu/>.  
Model initialisation and boundary conditions are available on demand since it represent hundreds of Go of data. Atmospheric  
forcing are computed from 6-hour ERA-interim data freely distributed by the European Centre for Medium-range Weather  
Forecast (ECMWF) at <https://apps.ecmwf.int/datasets/data/interim-full-daily/levtype=sfc/>. The NEMO 3.6 code modified to  
include the ABL1D model is available as well as the NEMO namelists used for each simulation and the python code used for  
425 filtering the large scale from the currents and the winds at <https://atlas.mercator-ocean.fr/s/oXboWZqYs4NJxDc>. Model  
outputs represent several To of data and are available on demand. ERA-interim data is available. ASCAT winds data and  
documentation is available are freely distributed by IFREMER on the IFREMER / CERSAT site  
(<ftp://ftp.ifremer.fr/ifremer/cersat/products/gridded/MWF/L3/ASCAT/Daily/>).

### Author contribution

430 T. Brivoal has written the paper with the help of all the co-authors. G. Samson contributed to the work supervision, H. Giordani  
helped me to compute and analyse the online KE budget, R. Bourdallé-Badie contributed to the experimental design. F.  
Lemarié, G. Samson and G. Madec designed and developed a preliminary version of the ABL1d model within NEMO 3.6  
stable version.

### Competing interest

435

The authors declare that they have no conflict of interest

### Acknowledgments

Florian Lemarié acknowledges support by the Copernicus Marine Environment Monitoring Service (CMEMS) through  
contract 22-GLO-HR – Lot 2 (High-resolution ocean, waves, atmosphere interaction)

440 Florian Lemarié and Gurvan Madec acknowledges by the European Union's Horizon 2020 research and innovation programme  
under grant agreement No 821926 (IMMERSE).

445





## References

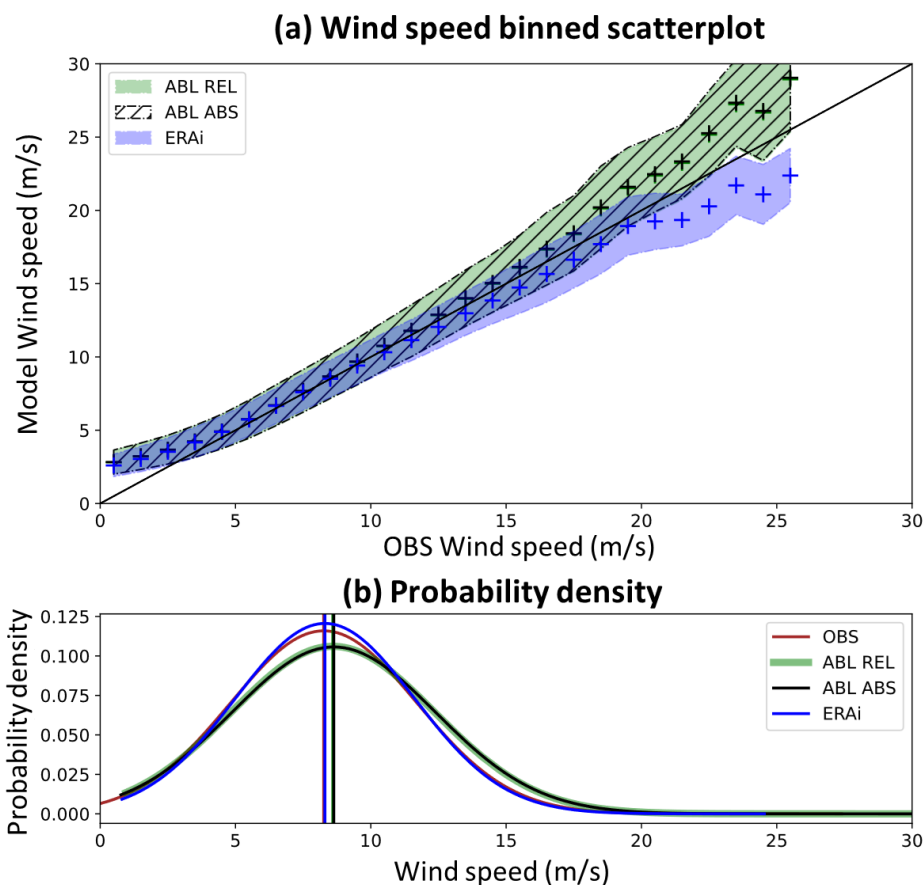
- Beljaars, A. C. M.: The parametrization of surface fluxes in large-scale models under free convection, *Q. J. R. Meteorol. Soc.*, 121(522), 255–270, doi:10.1002/qj.49712152203, 1995.
- 450 Bentamy, A., Grodsky, S. A., Carton, J. A., Croizé-Fillon, D. and Chapron, B.: Matching ASCAT and QuikSCAT winds, *J. Geophys. Res. Oceans*, 117(C2), doi:10.1029/2011JC007479, 2012.
- Bourras, D., Reverdin, G., Giordani, H. and Caniaux, G.: Response of the atmospheric boundary layer to a mesoscale oceanic eddy in the northeast Atlantic, *J. Geophys. Res. Atmos.*, 109(D18), doi:10.1029/2004JD004799, 2004.
- 455 Brodeau, L., Barnier, B., Gulev, S. K. and Woods, C.: Climatologically Significant Effects of Some Approximations in the Bulk Parameterizations of Turbulent Air–Sea Fluxes, *J. Phys. Oceanogr.*, 47(1), 5–28, doi:10.1175/JPO-D-16-0169.1, 2017.
- Bryan, F. O., Tomas, R., Dennis, J. M., Chelton, D. B., Loeb, N. G. and McClean, J. L.: Frontal Scale Air–Sea Interaction in High-Resolution Coupled Climate Models, *J. Climate*, 23(23), 6277–6291, doi:10.1175/2010JCLI3665.1, 2010.
- Bye, J. A. T.: Momentum exchange at the sea surface by wind stress and understress, *Q. J. R. Meteorol. Soc.*, 112(472), 501–510, doi:10.1002/qj.49711247212, 1986.
- 460 Chelton, D. and Xie, S.-P.: Coupled Ocean-Atmosphere Interaction at Oceanic Mesoscales, *Oceanography*, 23(4), 52–69, doi:10.5670/oceanog.2010.05, 2010.
- Chelton, D. B. and Wentz, F. J.: Global Microwave Satellite Observations of Sea Surface Temperature for Numerical Weather Prediction and Climate Research, *B. Am. Meteorol. Soc.*, 86(8), 1097–1116, doi:10.1175/BAMS-86-8-1097, 2005.
- 465 Chelton, D. B., Esbensen, S. K., Schlax, M. G., Thum, N., Freilich, M. H., Wentz, F. J., Gentemann, C. L., McPhaden, M. J. and Schopf, P. S.: Observations of Coupling between Surface Wind Stress and Sea Surface Temperature in the Eastern Tropical Pacific, *J. Climate*, 14(7), 1479–1498, doi:10.1175/1520-0442(2001)014<1479:OOCBSW>2.0.CO;2, 2001.
- Chelton, D. B., Schlax, M. G. and Samelson, R. M.: Summertime Coupling between Sea Surface Temperature and Wind Stress in the California Current System, *J. Phys. Oceanogr.*, 37(3), 495–517, doi:10.1175/JPO3025.1, 2007.
- 470 Cheng, Y., Canuto, V. M. and Howard, A. M.: An Improved Model for the Turbulent PBL, *J. Atmospheric Sci.*, 59(9), 1550–1565, doi:10.1175/1520-0469(2002)059<1550:AIMFTT>2.0.CO;2, 2002.
- Cuxart, J., Bougeault, P. and Redelsperger, J.-L.: A turbulence scheme allowing for mesoscale and large-eddy simulations, *Q. J. R. Meteorol. Soc.*, 126(562), 1–30, doi:10.1002/qj.49712656202, 2000.
- Dawe, J. T. and Thompson, L.: Effect of ocean surface currents on wind stress, heat flux, and wind power input to the ocean, *Geophys. Res. Lett.*, 33(9), doi:10.1029/2006GL025784, 2006.
- 475 Deardorff, J. W.: Stratocumulus-capped mixed layers derived from a three-dimensional model, *Bound.-Layer Meteorol.*, 18(4), 495–527, doi:10.1007/BF00119502, 1980.
- 480 Dee, D., Rosnay P, de, Uppala, Simmons, Berrisford, Poli, P., Kobayashi, S., Andrae, U., Balmaseda, M., Balsamo, G., Bauer, Bechtold, Beljaars, de Berg, van, Bidlot, J., Bormann, N., Delsol, Dragani, R., Fuentes, M. and Vitart, F.: The ERA-Interim reanalysis: Configuration and performance of the data assimilation system, *Q. J. R. Meteorol. Soc.*, 137, 553–597, doi:10.1002/qj.828, 2011.



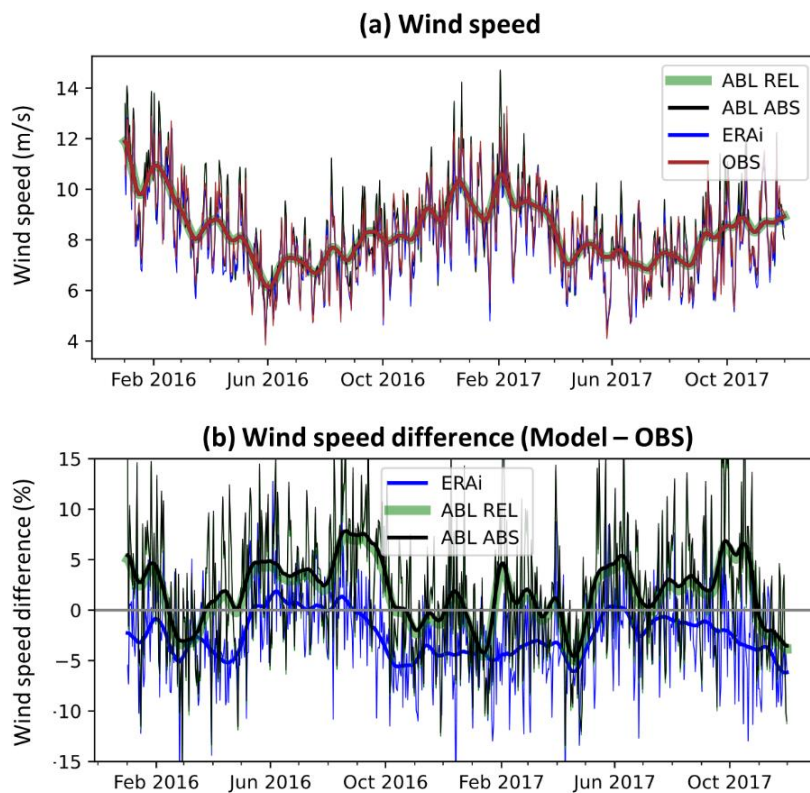
- Dewar, W. K. and Flierl, G. R.: Some Effects of the Wind on Rings, *J. Phys. Oceanogr.*, 17(10), 1653–1667, doi:10.1175/1520-0485(1987)017<1653:SEOTWO>2.0.CO;2, 1987.
- Duhaut, T. H. A. and Straub, D. N.: Wind Stress Dependence on Ocean Surface Velocity: Implications for Mechanical Energy Input to Ocean Circulation, *J. Phys. Oceanogr.*, 36(2), 202–211, doi:10.1175/JPO2842.1, 2006.
- 485 Egbert, G. and Y. Erofeeva, S.: Efficient Inverse Modeling of Barotropic Ocean Tides, *J Atmos Ocean Tech*, 19, 183–204, doi:10.1175/1520-0426(2002)019<0183:EIMOBO>2.0.CO;2, 2002.
- Frenger, I., Gruber, N., Knutti, R. and Münnich, M.: Imprint of Southern Ocean eddies on winds, clouds and rainfall, *Nat. Geosci.*, 6(8), 608–612, doi:10.1038/ngeo1863, 2013.
- 490 Gaube, P., Chelton, D. B., Samelson, R. M., Schlax, M. G. and O’Neill, L. W.: Satellite Observations of Mesoscale Eddy-Induced Ekman Pumping, *J. Phys. Oceanogr.*, 45(1), 104–132, doi:10.1175/JPO-D-14-0032.1, 2014.
- Hersbach, H.: Assimilation of scatterometer data as equivalent-neutral wind, , 27, doi:10.21957/k4txh5c4u, 2010.
- Jullien, S., Masson, S., Oerder, V., Samson, G., Colas, F. and Renault, L.: Impact of Ocean–Atmosphere Current Feedback on Ocean Mesoscale Activity: Regional Variations and Sensitivity to Model Resolution, *J. Climate*, 33(7), 2585–2602, doi:10.1175/JCLI-D-19-0484.1, 2020.
- 495 de Kloe, J., Stoffelen, A. and Verhoef, A.: Improved Use of Scatterometer Measurements by Using Stress-Equivalent Reference Winds, *IEEE J. Sel. Top. Appl. Earth Obs. Remote Sens.*, 10(5), 2340–2347, doi:10.1109/JSTARS.2017.2685242, 2017.
- Lemarié, F., Samson, G., Redelsperger, J. L., Giordani, H., Brivoal, T., Masson, S. and Madec, G.: A simplified atmospheric boundary layer model for an improved representation of air-sea interactions in eddying oceanic models: implementation and first evaluation in NEMO(4.0), *Geosci. Model Dev.*, 2020, in review.
- 500 Liu, W. T., Zhang, A. and Bishop, J. K. B.: Evaporation and solar irradiance as regulators of sea surface temperature in annual and interannual changes, *J. Geophys. Res. Oceans*, 99(C6), 12623–12637, doi:10.1029/94JC00604, 1994.
- Luo, J.-J., Masson, S., Behera, S., Shingu, S. and Yamagata, T.: Seasonal Climate Predictability in a Coupled OAGCM Using a Different Approach for Ensemble Forecasts, *J. Climate*, 18(21), 4474–4497, doi:10.1175/JCLI3526.1, 2005.
- 505 Lyard, F., Lefevre, F., Letellier, T. and Francis, O.: Modelling the global ocean tides: modern insights from FES2004, *Ocean Dyn.*, 56(5), 394–415, doi:10.1007/s10236-006-0086-x, 2006.
- Madec, G.: Nemo Ocean Engine, Note Pole Modélisation Inst. Pierre-Simon Laplace IPSL, 27, 2009.
- Maraldi, C., Chanut, J., Levier, B., Ayoub, N., Mey, P. D., Refray, G., Lyard, F., Cailleau, S., Drévillon, M., Fanjul, E. A., Sotillo, M. G., Marsaleix, P. and the Mercator Research and Development Team: NEMO on the shelf: assessment of the Iberia&ndash;Biscay&ndash;Ireland configuration, *Ocean Sci.*, 9(4), 745–771, doi:https://doi.org/10.5194/os-9-745-2013, 2013.
- 510 Oerder, V., Colas, F., Echevin, V., Masson, S., Hourdin, C., Jullien, S., Madec, G. and Lemarie, F.: Mesoscale SST–wind stress coupling in the Peru–Chile current system: Which mechanisms drive its seasonal variability?, *Clim. Dynam.*, 47(7–8), 2309–2330, doi:10.1007/s00382-015-2965-7, 2016.



- 515 Oerder, V., Colas, F., Echevin, V., Masson, S. and Lemarié, F.: Impacts of the Mesoscale Ocean-Atmosphere Coupling on the Peru-Chile Ocean Dynamics: The Current-Induced Wind Stress Modulation, *J. Geophys. Res. Oceans*, 123(2), 812–833, doi:10.1002/2017JC013294, 2018.
- O'Neill, L. W., Chelton, D. B. and Esbensen, S. K.: Covariability of Surface Wind and Stress Responses to Sea Surface Temperature Fronts, *J. Climate*, 25(17), 5916–5942, doi:10.1175/JCLI-D-11-00230.1, 2012.
- 520 Pacanowski, R. C.: Effect of Equatorial Currents on Surface Stress - NASA/ADS, *J. Phys. Oceanogr.*, 17(6), 833–838, doi:10.1175/1520-0485(1987)017<0833:EOECOS>2.0.CO;2, 1987.
- Renault, L., Molemaker, M. J., Gula, J., Masson, S. and McWilliams, J. C.: Control and Stabilization of the Gulf Stream by Oceanic Current Interaction with the Atmosphere, *J. Phys. Oceanogr.*, 46(11), 3439–3453, doi:10.1175/JPO-D-16-0115.1, 2016a.
- 525 Renault, L., Molemaker, M. J., McWilliams, J. C., Shchepetkin, A. F., Lemarié, F., Chelton, D., Illig, S. and Hall, A.: Modulation of Wind Work by Oceanic Current Interaction with the Atmosphere, *J. Phys. Oceanogr.*, 46(6), 1685–1704, doi:10.1175/JPO-D-15-0232.1, 2016b.
- Renault, L., McWilliams, J. C. and Penven, P.: Modulation of the Agulhas Current Retroflexion and Leakage by Oceanic Current Interaction with the Atmosphere in Coupled Simulations, *J. Phys. Oceanogr.*, 47(8), 2077–2100, doi:10.1175/JPO-D-16-0168.1, 2017a.
- 530 Renault, L., McWilliams, J. C. and Masson, S.: Satellite Observations of Imprint of Oceanic Current on Wind Stress by Air-Sea Coupling, *Sci. Rep.*, 7(1), 17747, doi:10.1038/s41598-017-17939-1, 2017b.
- Rooth, C. and Xie, L.: Air-sea boundary layer dynamics in the presence of mesoscale surface currents, *J. Geophys. Res. Oceans*, 97(C9), 14431–14438, doi:10.1029/92JC01296, 1992.
- 535 Samelson, R. M., Skillingstad, E. D., Chelton, D. B., Esbensen, S. K., O'Neill, L. W. and Thum, N.: On the Coupling of Wind Stress and Sea Surface Temperature, *J. Climate*, 19(8), 1557–1566, doi:10.1175/JCLI3682.1, 2006.
- Seo, H., Miller, A. J. and Norris, J. R.: Eddy-Wind Interaction in the California Current System: Dynamics and Impacts, *J. Phys. Oceanogr.*, 46(2), 439–459, doi:10.1175/JPO-D-15-0086.1, 2016.
- Song, H., Marshall, J., McGillicuddy, D. J. and Seo, H.: Impact of Current-Wind Interaction on Vertical Processes in the Southern Ocean, *J. Geophys. Res. Oceans*, 125(4), e2020JC016046, doi:10.1029/2020JC016046, 2020.
- 540 Umlauf, L. and Burchard, H.: A generic length-scale equation for geophysical turbulence models, *J. Mar. Res.*, 61(2), 235–265(31), doi:10.1357/002224003322005087, 2003.
- Wentz, F. J., Gentemann, C., Smith, D. and Chelton, D.: Satellite Measurements of Sea Surface Temperature Through Clouds, *Science*, 288(5467), 847–850, doi:10.1126/science.288.5467.847, 2000.
- 545 Yu, Z. and Metzger, E. J.: The impact of ocean surface currents on global eddy kinetic energy via the wind stress formulation, *Ocean Model.*, 139, 101399, doi:10.1016/j.ocemod.2019.05.003, 2019.
- Zhai, X. and Greatbatch, R. J.: Wind work in a model of the northwest Atlantic Ocean, *Geophys. Res. Lett.*, 34(4), doi:10.1029/2006GL028907, 2007.



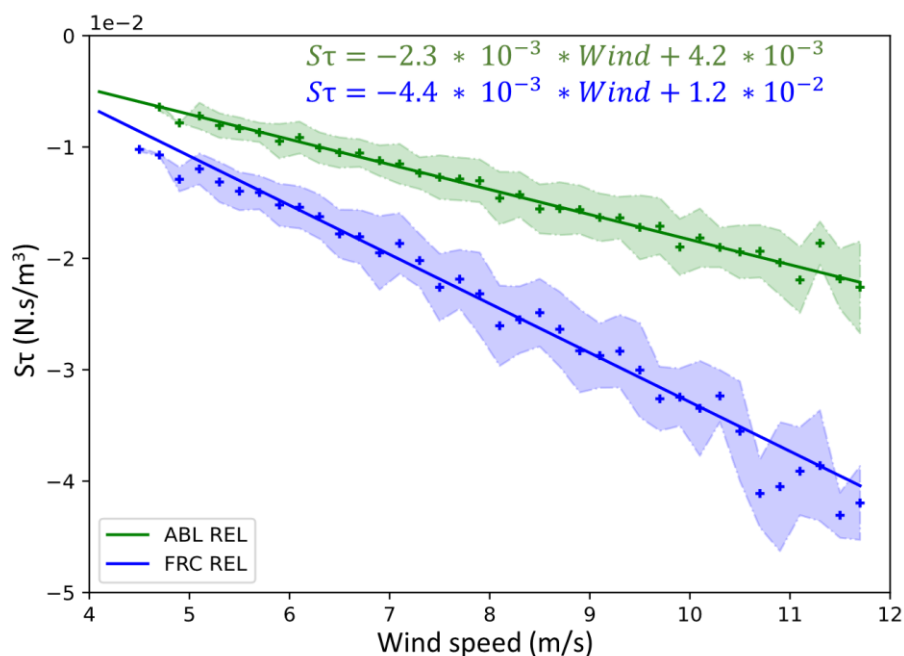
550 **Figure 1:** (a) Binned scatterplot of 10-meters stress-equivalent wind (m/s) for ERAI (blue), ABL REL (green) and ABL ABS (black)  
simulations compared to ASCAT. The crosses represent the binned average and the shaded contours represent  $\pm 1$  RMSE for ABL  
REL (green) and ERAI (blue). Black crosses and dashed contours represent the binned average and  $\pm 1$  RMSE for ABL ABS  
respectively. The black solid line indicates a perfect fit compared to ASCAT. (b) 10-meters stress-equivalent wind normalised  
555 distribution histogram for ERAI (blue), ABL REL (green) and ABL ABS (black) and ASCAT (dark red). Note that the binned  
averages and wind distribution are almost identical for ABL REL and ABL ABS.



**Figure 2: Time series of (a) stress-equivalent wind speed for ASCAT winds (brown), ABL REL (green), ABL ABS (black) and ERA-interim (Blue) averaged over the IBI area, (b) stress-equivalent wind speed differences in % with ASCAT.**

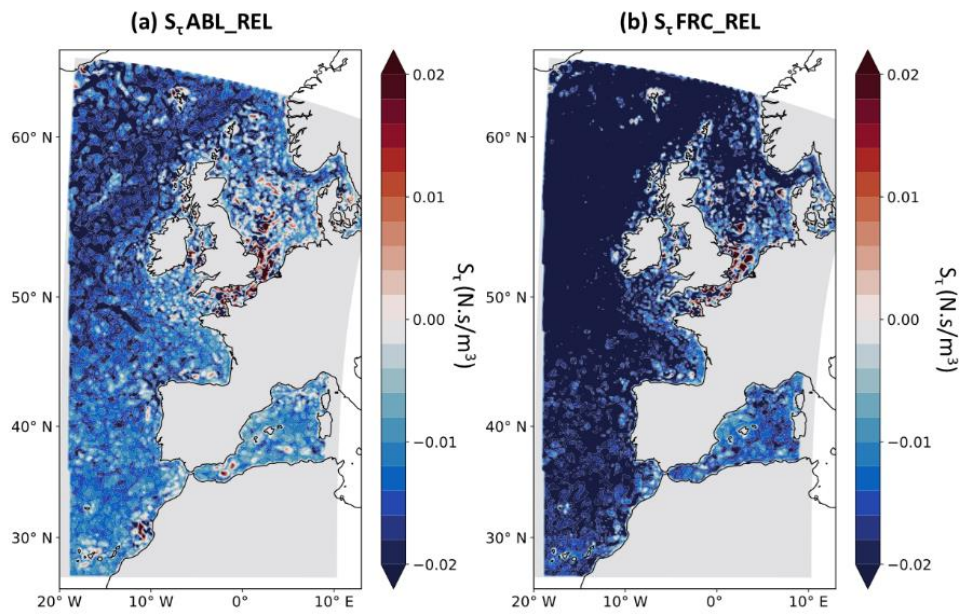
560

565

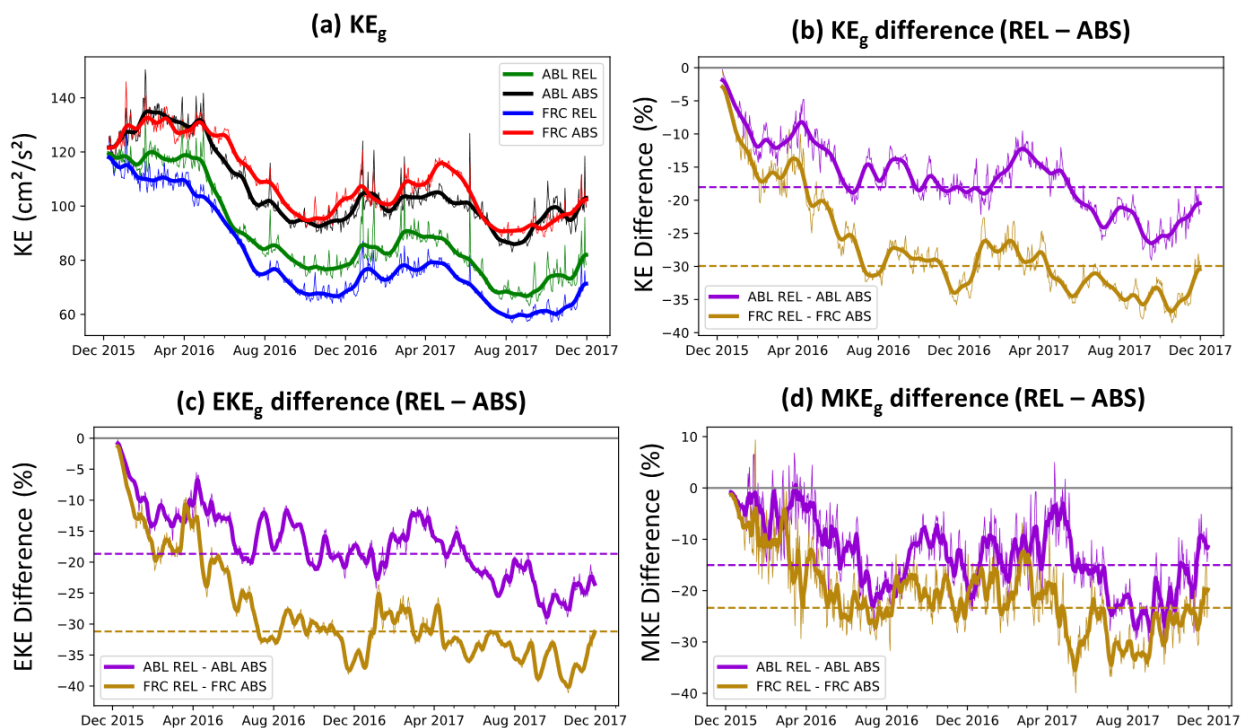


570 **Figure 3: Binned scattered plots of the coupling coefficient  $S\tau$  versus the total wind speed for ABL REL (green) and FRC REL (blue).** The dots represent the binned average, the solid line represents the regression line between  $S\tau$  and the wind speed and the shaded contours represent  $\pm 1$  RMSE.

575



**Figure 4:** Maps of the mean coupling coefficient  $S_\tau$  between the curl of the surface wind stress and the current for ABL REL (a) and (b) FRC REL

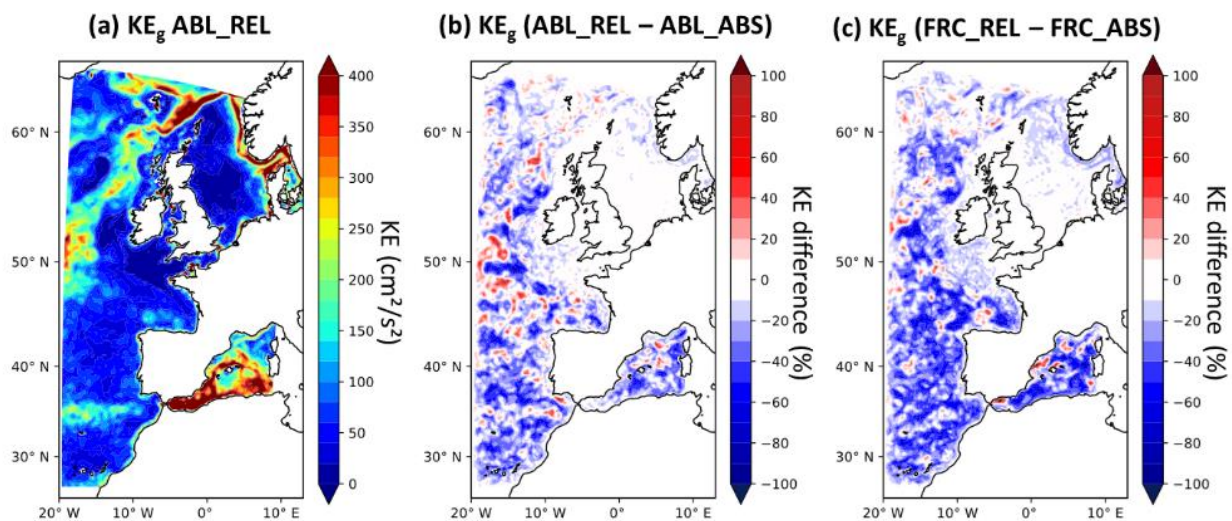


580 **Figure 5: Time series of the daily means of (a)  $KE_g$  for ABL ABS (black), ABL REL (green), FRC REL (blue) and FRC ABS (red) and (b) (c) (d): respectively,  $KE_g$ ,  $EKE_g$  and  $MKE_g$  differences in % between ABL REL and ABL ABS (violet) and between FRC REL and FRC ABS (golden) averaged over the IBI area. The dashed line represents the mean obtained by removing the spinup period (i.e: the first 3 months) from the data.**

585

590





**Figure 6:** Map of (a)  $KE_g$  mean for ABL REL in  $cm^2/s^2$ , (b)  $KE_g$  mean difference between ABL REL and ABL ABS in %, and (c)  $KE_g$  mean difference between FRC REL and FRC ABS averaged over 2016-2017.

595

600

605

610

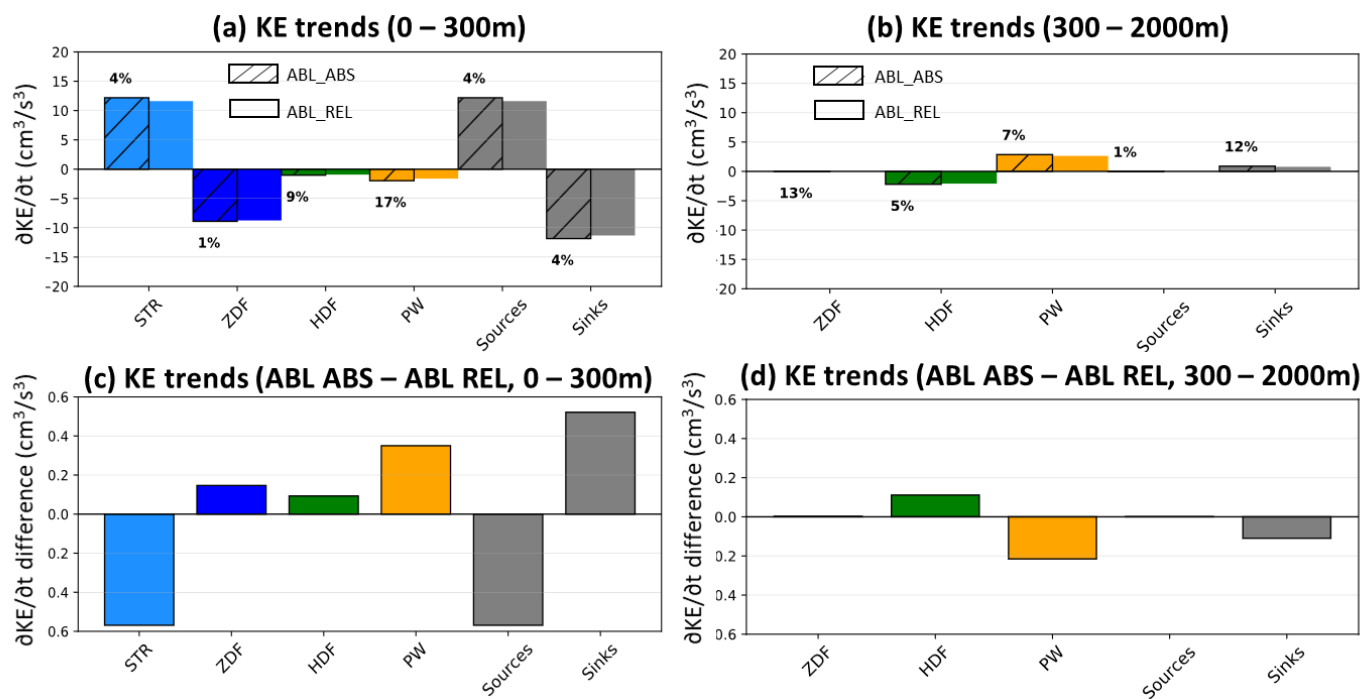
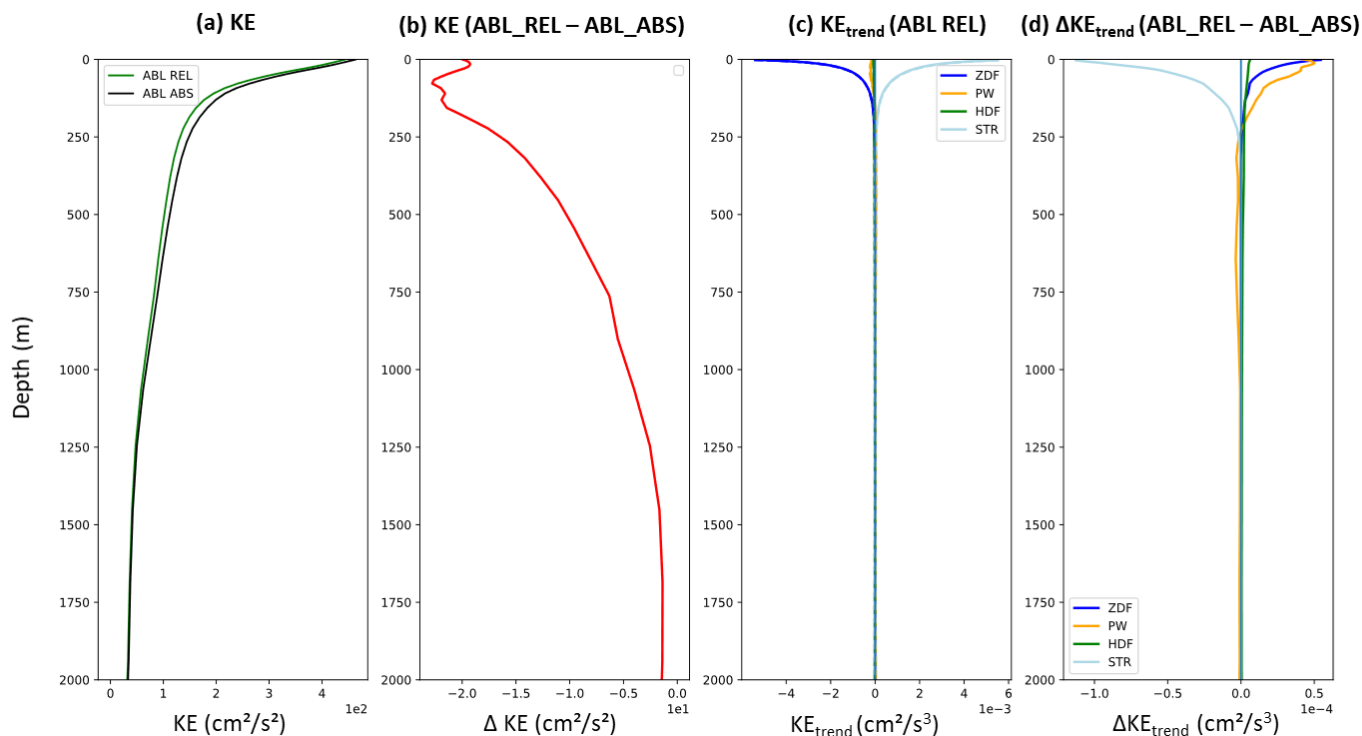


Figure 7: Mean depth-integrated KE trends over the IBI area for the whole period of simulation in cm<sup>3</sup>/s<sup>3</sup> (a) and difference between the mean depth-integrated KE trends in cm<sup>3</sup>/s<sup>3</sup> from ABL ABS and ABL REL (b) averaged over the 04/2016 – 04/2017 period. The percentage in (a) represents the percentage of change of each trend between ABL ABS and ABL REL, a positive value indicates that the trends are stronger for ABL ABS. The two rightmost columns represent the sum of the source terms in the KE budget (i.e: positive values) and of the sink terms (i.e: negative values).

615

620

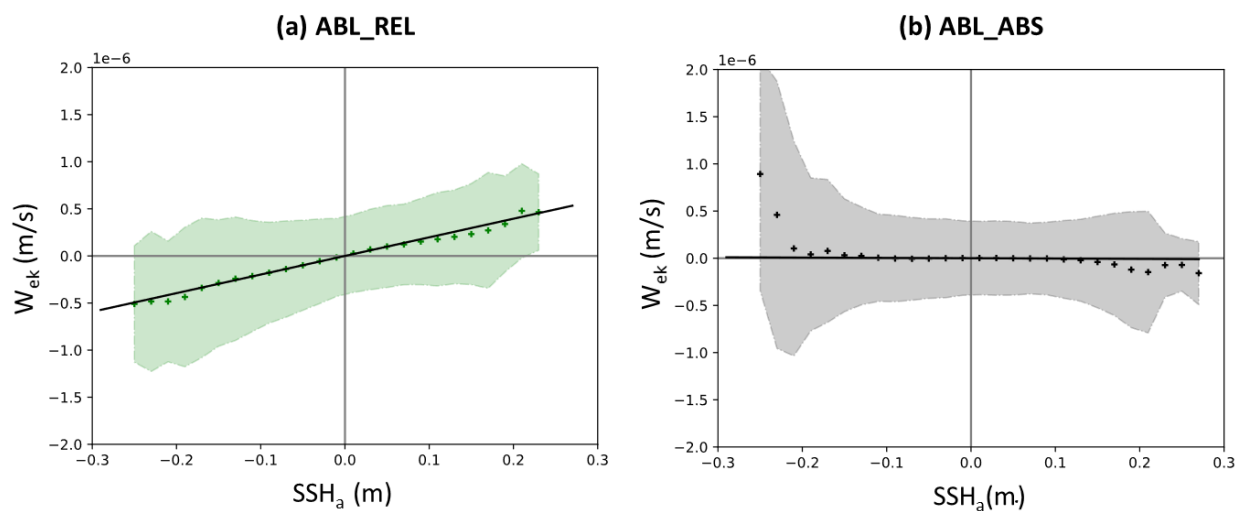
625



630 **Figure 8:** Mean vertical profile averaged over the IBI area and over the 04/2016 – 04/2017 period for (a) the KE in  $\text{cm}^2/\text{s}^2$ , for ABL REL (green) and ABL ABS (black), (b) the differences of KE between ABL REL and ABL ABS in  $\text{cm}^2/\text{s}^2$ , (c) each KE trends in  $\text{m}^2/\text{s}^3$ , (d) the differences of each KE trends between ABL ABS and ABL REL in  $\text{cm}^2/\text{s}^3$ .

635

640



**Figure 9:** Binned scatterplots of the mesoscale anomaly of Ekman pumping velocity (m/s) versus the Sea Surface Height mesoscale anomaly (m) for (a) ABL REL and (b) ABL ABS. The dots represent the binned average, the solid line represents the regression line between  $S\tau$  and the wind speed and the shaded contours represent  $\pm 1$  RMSE.