



HAL
open science

Revolutionizing PLC Systems with AI: A New Era of Industrial Automation

Niravkumar Dhameliya

► **To cite this version:**

Niravkumar Dhameliya. Revolutionizing PLC Systems with AI: A New Era of Industrial Automation. American Digits: Journal of Computing and Digital Technologies, 2023, 1 (1), pp.33-48. hal-04648969

HAL Id: hal-04648969

<https://hal.science/hal-04648969v1>

Submitted on 15 Jul 2024

HAL is a multi-disciplinary open access archive for the deposit and dissemination of scientific research documents, whether they are published or not. The documents may come from teaching and research institutions in France or abroad, or from public or private research centers.

L'archive ouverte pluridisciplinaire **HAL**, est destinée au dépôt et à la diffusion de documents scientifiques de niveau recherche, publiés ou non, émanant des établissements d'enseignement et de recherche français ou étrangers, des laboratoires publics ou privés.



Distributed under a Creative Commons Attribution - NonCommercial 4.0 International License



Journal of Computing and Digital Technologies

Vol. 1, Issue 1, 2023 [Pages 33-48]

<https://americandigits.com>

REVOLUTIONIZING PLC SYSTEMS WITH AI: A NEW ERA OF INDUSTRIAL AUTOMATION

NIRAVKUMAR DHAMELIYA

Revolutionizing PLC Systems with AI: A New Era of Industrial Automation

Niravkumar Dhameliya *Software Engineer, Therapy Brands, Birmingham, AL, USA*
[nirav.dhameliya145@gmail.com]

Abstract

This study investigates the revolutionary effects of combining PLCs (programmable logic controllers) and artificial intelligence (AI) in industrial automation. The primary goals are to discover how artificial intelligence (AI) improves productivity, sustainability, and quality control in industrial processes and identify problems and potential solutions related to AI-driven PLC systems. Methodologically, the applicability and advantages of AI algorithms, such as machine learning and deep learning, in PLC systems were examined through a thorough analysis of recent literature and case studies. Important conclusions show that integrating AI significantly improved process efficiency, real-time adaptation, and energy optimization. The accuracy of AI-driven solutions in defect identification helps quality control, while AI-driven solutions support cybersecurity measures. The policy implications highlight the necessity for robust regulatory frameworks to direct the moral use of AI in industrial contexts. According to the study's findings, AI-enhanced PLC systems are a significant development in industrial automation that promises increased manufacturing productivity, sustainability, and innovation in the future.

Keywords: PLC (Programmable Logic Controller), Artificial Intelligence, Industrial Automation, Revolutionizing, Smart Manufacturing, Robotics, Adaptive Control, Digital Transformation

INTRODUCTION

The combination of Artificial Intelligence (AI) and Programmable Logic Controllers (PLCs) represents a significant advancement in industrial automation. Historically, PLCs have been the mainstay of industrial control systems, automating various operations in industries including manufacturing, energy, and transportation (Mullangi, 2022). While traditional PLCs have proven helpful in consistently carrying out predetermined duties, they have yet to be able to adapt to dynamic settings or optimize operations in real-time.

AI technologies such as computer vision, deep learning, and machine learning have the potential to revolutionize PLC systems by giving them cognitive powers. Thanks to this development, PLCs can now examine enormous datasets, decide for themselves using real-time insights, and continually improve operations (Patel et al., 2019). Artificial Intelligence (AI) improves operational efficiency, precision, and flexibility in industrial processes by shifting decision-making from rule-based to data-driven.

This essay examines the significant effects of combining AI and PLC systems in industrial automation. It looks into how AI increases product quality by more precisely identifying flaws, boosts operational efficiency through predictive maintenance, and advances sustainability through energy and resource efficiency (Yarlagadda et al., 2020). The paper also discusses obstacles to implementing AI in PLC systems, including technological difficulties, cybersecurity threats, and regulatory issues.

This study uses a thorough methodology, incorporating information from case studies, actual data, and recent literature. By integrating research findings from both academic and practical settings, this article thoroughly comprehends the advantages and difficulties associated with AI-powered PLC systems. It provides topics for more research and development in AI-enhanced industrial automation and highlights successful applications. This article, organized to offer a coherent investigation, includes sections on particular uses of AI in business environments, implementation difficulties, possible solutions, and upcoming trends and advances. The study's ultimate goal is to provide insightful analysis and valuable recommendations to interested parties who want to take advantage of artificial intelligence's revolutionary potential to advance industrial automation techniques toward increased sustainability, quality, and efficiency.

STATEMENT OF THE PROBLEM

Though there are still gaps in current research and practical implementations, combining Artificial Intelligence (AI) with Programmable Logic Controllers (PLCs) represents a radical change in industrial automation. While traditional PLCs are excellent at reliably carrying out predetermined duties, they frequently need help adjusting to changing conditions and using real-time data to make the best decisions (Ying et al., 2017). This research gap emphasizes the need to investigate how AI may supplement PLC systems to overcome these constraints and bring in a new era of industrial process innovation, efficiency, and adaptability.

The existing body of literature indicates a knowledge vacuum about the full implications and possibilities of AI-powered PLC systems in various industrial domains. Although research has been done on the specific uses of AI in manufacturing and process control, a comprehensive examination incorporating AI into other industrial domains needs to be included (Mullangi et al., 2018; Vennapusa et al., 2018). Furthermore, there still needs to be more consensus on the practical understanding of the issues and solutions surrounding the integration of AI in PLC systems. These gaps must be filled for AI technologies to be more integrated and scalable in industrial automation.

This project investigates how industrial automation can be transformed by combining Artificial Intelligence (AI) and Programmable Logic Controllers (PLCs). It looks into how AI technologies,

such as deep learning and machine learning, might be used to improve PLC functionality and streamline industrial processes. Furthermore, the project examines how real-time data analytics, adaptive control techniques, and predictive maintenance enhance the operational efficiency of AI-driven PLC systems. Additionally, it seeks to evaluate how AI may improve defect detection, quality control systems, and process optimization to raise the caliber of products. The study's final objective is to assess how AI may improve industrial operations' energy use, resource management, and environmental stewardship to promote sustainability.

This project aims to close the knowledge gap between theoretical developments in AI technologies and their real-world application in PLC systems. It intends to pave the way for future advancements that optimize industrial processes, boost product quality, and promote sustainability using AI-driven innovations in industrial automation. It will examine particular applications, difficulties, and potential solutions.

METHODOLOGY OF THE STUDY

This study uses a secondary data-based review technique to investigate using artificial intelligence (AI) and PLCs (Programmable Logic Controllers) in industrial automation. It combines knowledge from reliable databases, academic journals, industrial reports, and current literature. By evaluating and synthesizing secondary data sources, this article attempts to provide a thorough analysis of the uses, advantages, difficulties, and future directions of AI-driven PLC systems in revolutionizing industrial automation across several sectors.

INTRODUCTION TO AI IN PLC SYSTEMS

In several industries, including industrial automation, the introduction of artificial intelligence (AI) has signaled a revolutionary period. AI technology integration is revolutionizing programmable logic controllers (PLCs), which have long been the foundation of industrial automation (Mohammed et al., 2017). This chapter explores the basic ideas of artificial intelligence (AI) in PLC systems and how it improves the intelligence, functionality, and efficiency of these vital parts of contemporary industrial processes.

Understanding PLC Systems: PLCs are specialist computing devices used in industrial settings to control processes and machinery. They can resist challenging industrial environments and are made for real-time operations. PLCs are traditionally used for repetitive operations and function according to preprogrammed logic. Traditional PLCs are efficient but must be more flexible and adaptive to manage complex, dynamic environments and processes (Ju et al., 2014).

The Role of AI in Industrial Automation: AI gives industrial automation a new level of complexity by allowing robots to learn from data, adjust to changing circumstances, and make defensible conclusions. Incorporating AI into PLC systems facilitates the shift from inflexible to intelligent automation (Ying & Addimulam, 2022). This transition is characterized by increased operational effectiveness, less downtime, predictive maintenance, and improved decision-making ability.

Enhancing PLC Functionality with AI

- **Data-Driven Decision-Making:** AI systems, particularly machine learning (ML), can examine enormous volumes of data business operations produce. AI-enabled PLCs can make real-time decisions that maximize performance and prevent possible problems before they worsen by finding patterns and correlations within the data.
- **Predictive Maintenance:** Scheduled maintenance, which can be expensive and inefficient, is the foundation of traditional PLC systems. By continuously assessing the condition of machinery and forecasting when parts are likely to break, artificial intelligence (AI) enables predictive maintenance (Koehler et al., 2018). This proactive strategy increases equipment lifespan and reduces downtime.
- **Adaptive Control:** AI endows PLC systems with the ability to adapt to changing circumstances and optimize operations. AI-enabled PLCs, for example, can dynamically modify production settings in a manufacturing facility based on real-time data, guaranteeing constant product quality and optimizing throughput.
- **Anomaly Detection:** AI systems are skilled at identifying irregularities and anomalies in industrial processes. AI-enabled PLCs can detect deviations from regular operations and initiate alarms or corrective actions by continuously monitoring data streams. This prevents potential interruptions and ensures smooth operations.

Real-World Applications

Numerous industrial areas have already demonstrated great promise for integrating AI into PLC systems. AI-enabled PLCs, for instance, are utilized in the automobile sector to optimize assembly line processes, cutting down on production time and improving product quality (Mohammed et al., 2017). AI-driven PLCs in the energy industry aid in power plant performance monitoring and optimization, resulting in more effective energy generation and delivery.

Challenges and Considerations

Incorporating AI into PLC systems has some advantages, but there are also drawbacks to consider. Due to the intricacy of implementing AI solutions, knowledge of industrial automation and AI technology is necessary (Nizamuddin et al., 2019). Furthermore, it is crucial to guarantee the security and dependability of AI-enabled PLC systems because any flaws could have catastrophic repercussions in industrial environments. One significant advancement in industrial automation is incorporating AI into PLC systems. Artificial intelligence (AI) is opening the door to a new era of intelligent manufacturing and industrial operations by improving PLCs' functionality, efficiency, and intelligence (Sachani & Vennapusa, 2017). AI technologies will significantly influence PLC systems and industrial automation as they develop, resulting in more robust, flexible, and effective industrial processes.

APPLICATIONS OF AI IN INDUSTRIAL AUTOMATION

AI in industrial automation has revolutionized production and operations by improving efficiency, accuracy, and adaptability. AI technologies, including machine learning (ML), deep learning, and

computer vision, are transforming PLCs and other automation systems. As shown in this chapter, AI is revolutionizing industries in industrial automation.

Predictive Maintenance: One of the most significant AI applications in industrial automation is predictive maintenance. Traditional maintenance methods like reactive and preventive maintenance often cause unanticipated downtime or resource waste (Dhameliya et al., 2020). AI-driven predictive maintenance predicts equipment failure using sensor and PLC data. AI systems can detect faults early by studying data patterns and trends, allowing maintenance staff to prevent costly downtime. This enhances equipment reliability and optimizes maintenance schedules, lowering operational costs (Jun-Ho, 2018).

Quality Control and Inspection: AI improves manufacturing quality control and inspection, especially computer vision and deep learning. PLCs with AI can evaluate production line photos and data in real-time to find errors and ensure product quality. AI algorithms can find tiny circuit board faults that humans miss in electronics (Shajahan et al., 2019). This precision ensures quality and reduces product defects. AI systems can also learn from fresh data, improving inspection accuracy.

Process Optimization: AI is essential to industrial process optimization. Traditional PLCs have fixed logic and pre-defined parameters, which may not work for complex processes. AI-enabled PLCs can optimize operations in real-time and adapt to changing conditions. In chemical manufacturing, AI systems may modify raw material mixing ratios based on real-time data to optimize chemical reactions and product consistency (Mullangi et al., 2018). Dynamic adjustment boosts process efficiency, waste reduction, and product quality.

Energy Management: Energy usage is a major industrial issue. AI improves energy efficiency and sustainability. AI-driven PLCs can find energy savings potential by analyzing energy consumption. AI algorithms can optimize HVAC settings in large production plants using real-time occupancy and weather data. AI can also optimize industrial machines to save energy without sacrificing performance. Energy management solutions lower operational expenses and environmental impact (Rodriguez et al., 2021).

Autonomous Robotics: Industrial automation autonomous robotics relies on AI. AI-enabled robots can perform difficult jobs precisely and flexibly. In car manufacturing, AI-driven robots can install electrical wiring and assemble engine components more accurately than humans. AI also lets robots work securely and efficiently with humans, increasing productivity. These autonomous systems are helpful in dangerous areas because they can do harmful jobs safely (Rabah et al., 2017).

Supply Chain and Inventory Management: Industrial supply chain and inventory management are also changing with AI. AI algorithms improve demand forecasting, inventory optimization, and supply chain efficiency (Maddula, 2018). PLCs with AI can track inventory in real-time, predict supply shortfalls, and automatically replenish supplies. This prevents inventory shortages from disrupting production operations. AI can optimize logistics and transportation routes, decreasing delivery times and costs.

Table 1: Various types of AI algorithms and their applications in industrial automation

AI Algorithm Type	Description	Applications in Industrial Automation	Examples of Tasks
Machine Learning	Algorithms that enable systems to learn from data and improve over time without being explicitly programmed.	Predictive maintenance, anomaly detection, and optimization of production processes.	Predicting equipment failures based on sensor data and optimizing production schedules.
Deep Learning	Subset of machine learning where algorithms mimic the structure and function of the human brain's neural networks, capable of processing large amounts of data and extracting intricate patterns.	Computer vision, natural language processing, automated decision-making.	Image recognition for quality control and speech recognition for voice-controlled systems.
Reinforcement Learning	Algorithms learn to make decisions by trial and error, receiving feedback through rewards or penalties.	Autonomous robots, process optimization, adaptive control systems.	Training robots to perform complex tasks, optimizing control strategies in dynamic environments.
Natural Language Processing (NLP)	Algorithms that enable machines to understand and interpret human language facilitate interaction with systems and the analysis of textual data.	Text-based analytics, customer support automation, document processing.	Analyzing customer feedback, automating responses to inquiries, and extracting insights from documents.
Computer Vision	Algorithms that allow machines to interpret visual information from images or videos, enabling tasks such as image recognition, object detection, and quality inspection.	Defect detection in manufacturing, automated inspection systems, and visual quality control.	Identifying product defects, monitoring assembly line processes, and ensuring product quality.

Table 1 provides an overview of different types of AI algorithms, their descriptions, and specific applications within industrial automation. Each algorithm type is accompanied by examples of tasks they can effectively perform, illustrating their diverse roles in enhancing operational efficiency and automation in industrial settings.

AI revolutionizes predictive maintenance, quality control, process optimization, energy management, autonomous robots, and supply chain management in industrial automation. By combining AI technology with PLC systems, the industry may improve productivity, precision, and adaptability, opening the road for intelligent production (Patel et al., 2022). AI will drive innovation and set new operating standards in industrial automation as it advances.

IMPLEMENTATION CHALLENGES AND SOLUTIONS

Integrating AI with PLCs to change industrial automation is ambitious and complex. These challenges include technical issues, cybersecurity hazards, labor adaptation, and pricing. This chapter addresses the main AI implementation problems in PLC systems and provides practical solutions. Figure 1 outlines the steps in implementing solutions to overcome challenges in the context. Adjustments can be made based on specific steps or interactions pertinent to the implementation process.

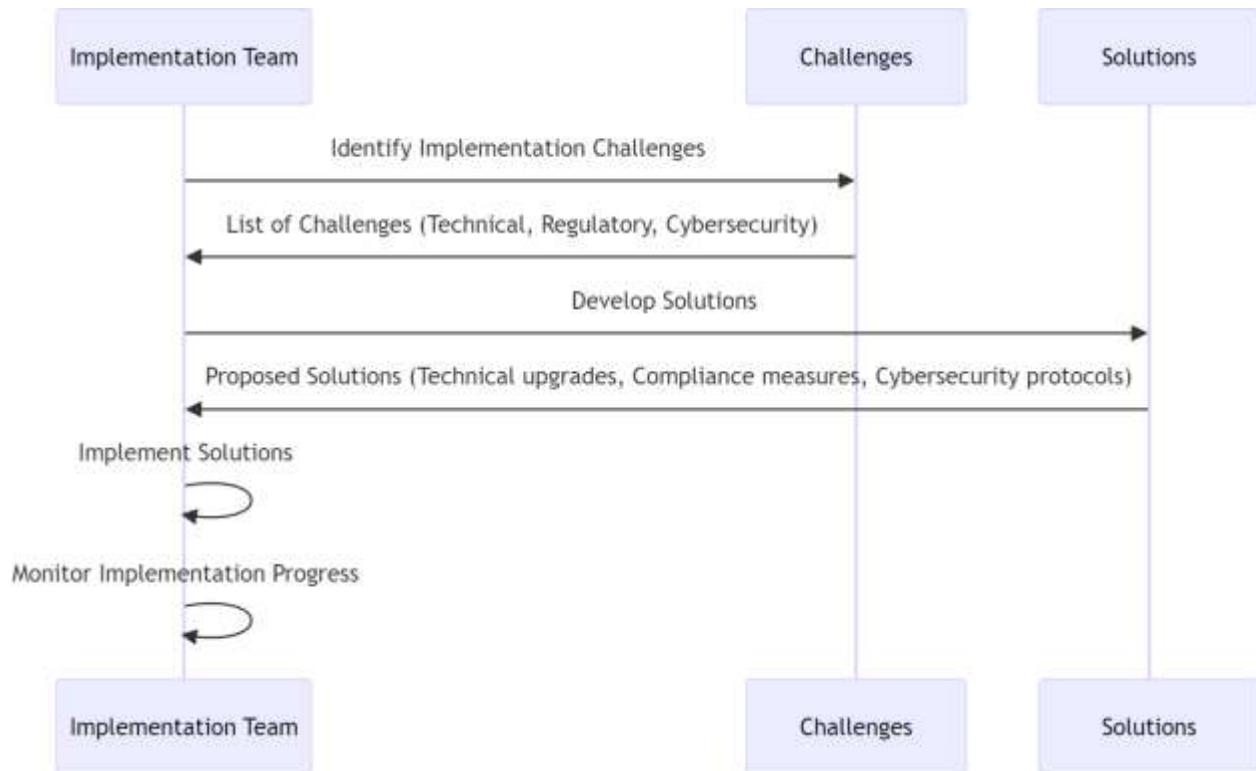


Figure 1: Implementation Process Flow

Technical Challenges

Data Quality and Integration: AI implementation requires high-quality data. In industry, data might be noisy, partial, or inconsistent (Maddula et al., 2019). Integrating data from legacy systems is also a tricky challenge.

Solution: Use vital data collecting and preparation frameworks. Ensure data quality with comprehensive data cleaning and normalization (Dhameliya, 2022). To create a complete AI data set, utilize data integration technologies to integrate new and legacy systems smoothly.

Real-Time Processing: AI algorithms need a lot of computational power and time to make real-time decisions, which makes industrial automation difficult (Wang et al., 2013).

Solution: Use edge computing to bring AI processing closer to the data source. Implement real-time, lightweight AI models. Increase AI algorithm speed and efficiency via high-performance computing and parallel processing.

Cybersecurity Risks: Integrating AI into PLC systems increases cybersecurity risks. Cyberattacks can target AI systems due to their data needs and network connectivity (Pinter & Trohak, 2013).

Solution: Use encryption, firewalls, and intrusion detection systems. To mitigate risks, update and patch AI and PLC software regularly. To protect against new risks, perform extensive security assessments and use AI-specific frameworks.

Workforce Adaptation: AI in industrial automation may modify work roles and responsibilities, prompting employee resistance.

Solution: Provide substantial personnel training and upskilling. Inform employees about how AI can enhance their roles rather than replace them. Encourage staff to adopt new technology and methods by promoting continual learning and innovation.

Cost Considerations: AI in PLC systems requires expensive hardware, software, and qualified workers, which can hinder SMEs.

Solution: Pilot AI integration initiatives to prove ROI. Find government grants, subsidies, or industry collaborations to cover startup costs. Cloud-based AI solutions are scalable and cheaper than on-premises deployments. Focus on high-impact areas where AI can provide rapid benefits.

Scalability Issues

AI technologies are challenging to scale, from pilot projects to industrial operations. Larger, more complicated systems may not benefit from AI models that work well in controlled situations.

Solution: Create a scalable AI infrastructure that grows with the company. Use adaptable AI models that can be modified to suit diverse situations. Perform rigorous real-world testing and validation to ensure scalability and robustness.

Ethical and Regulatory Compliance: AI in industrial automation must follow regional and industry-specific ethical and legal standards.

Solution: Create a governance framework to follow ethical and regulatory norms. Connect with regulatory agencies and industry groups to learn about new rules and best practices. Use transparent AI systems that explain and account for their activities.

AI deployment in PLC systems presents various problems, but strategic design, sturdy frameworks, and continual development can overcome them (Dhameliya et al., 2021). Businesses may change their automated processes using AI by tackling technological, cybersecurity, workforce, cost, scalability, and compliance challenges. The advantages of increased efficiency, productivity, and adaptability surpass the initial difficulties, ushering in a new era of industrial innovation.

FUTURE DIRECTIONS AND INNOVATIONS

AI-PLC integration promises to revolutionize industrial automation in the future. Emerging technologies, new applications, and ongoing innovation will change industrial processes. This chapter discusses the future ideas and breakthroughs that will influence AI-enhanced PLC systems.

Enhanced AI Algorithms

Advanced AI algorithms will lead to future innovations. These algorithms will handle complex tasks more accurately and efficiently. Deep learning models, especially neural networks, will improve, allowing PLC systems to do predictive maintenance, anomaly detection, and process optimization with unparalleled precision (Mullangi et al., 2018).

Innovations:

- **Federated Learning:** Trains AI models on numerous decentralized devices or servers, enabling PLC systems to learn from varied data sources without compromising privacy.
- **Reinforcement Learning:** PLC systems can optimize control techniques in real time using reinforcement learning to adapt to changing conditions and improve performance (Barmada et al., 2017).

Edge AI and IoT Integration

The convergence of AI, edge computing, and the IoT will shape industrial automation. Edge AI reduces latency and bandwidth by processing and making decisions closer to the data source.

Innovations:

- **Intelligent Sensors and Actuators:** AI-enabled smart sensors and actuators for real-time monitoring and control contribute to more responsive and efficient industrial processes.
- **Autonomous Systems:** AI-powered PLCs will enable fully autonomous systems that self-optimize, self-heal, and self-monitor, making industrial operations more innovative and resilient.

Human-AI Collaboration

AI and humans will work together in industrial automation. Industrial productivity and safety will improve with AI (Shi, 2014).

Innovations:

- **AI-Augmented Reality (AR):** AI-enabled gadgets offer real-time information, diagnostics, and guidance, enhancing accuracy and efficiency in complicated activities.
- **Collaborative Robots (Cobots):** AI-driven cobots will help people with repetitive or dangerous jobs so they can focus on higher-level decision-making and creative problem-solving.

Advanced Cybersecurity Measures

As AI integration rises, PLC systems need more robust cybersecurity to protect against complex cyber threats. Advanced industrial automation security frameworks will be developed in the future.

Innovations:

- **AI-Driven Cybersecurity:** Real-time detection and response of cyber threats for industrial system integrity and reliability.

- **Blockchain Technology:** Blockchain technology improves industrial network trust and security by enabling safe and transparent data exchanges.

Sustainable and Green Automation

The future of industrial automation will emphasize sustainability and environmental responsibility (Addimulam et al., 2020). AI-driven PLC systems will benefit greener production and energy efficiency.

Innovations:

- **Energy Optimization:** AI algorithms that optimize energy use in industrial operations, decreasing waste and carbon footprints (Liu et al., 2017).
- **Circular Economy Models:** AI will help manufacturers integrate circular economy ideas, promote recycling, and save resources.

Regulatory and Ethical Frameworks

AI development and implementation will require clear regulatory and ethical frameworks as industrial automation integrates AI.

Innovations:

- **Ethical AI:** Innovative ideas include developing ethical AI systems that are transparent, accountable, and fair, according to moral principles, and respecting human rights (Anumandla, 2018).
- **Regulatory Compliance:** AI-driven PLC systems will meet changing regulatory norms for safe and ethical industrial technology use.

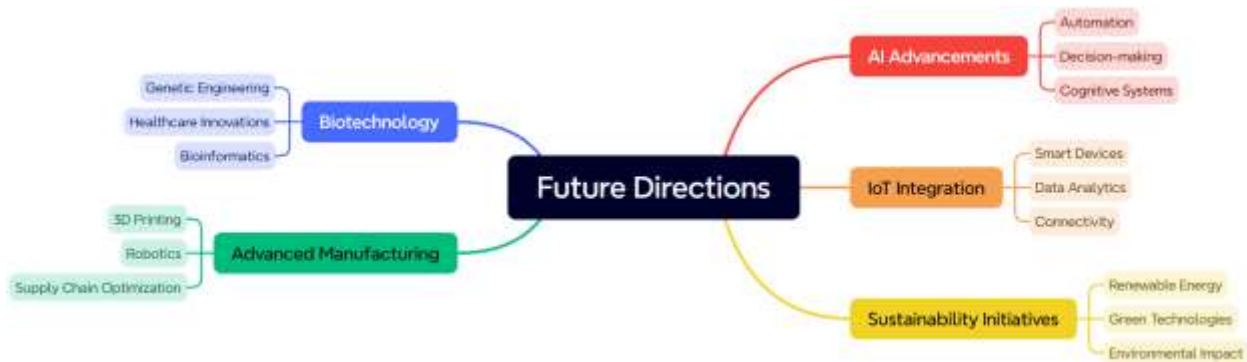


Figure 2: Mind Map of Future Innovations

Above Figure 2 organizes different innovative areas under the central theme of "Future Directions and Innovations," providing a structured visualization of potential impacts and applications across various fields. AI-enhanced PLC systems have several possibilities. Industrial automation innovation will be driven by improved AI algorithms, edge AI, IoT integration, human-AI collaboration, advanced cybersecurity, sustainable automation, and robust regulatory frameworks (Mullangi, 2017). More innovative, efficient, and resilient industrial operations will usher in a new

era of excellence. With these advancements, industries can expand and evolve in endless ways, laying the path for a future when AI and PLC systems interact seamlessly to revolutionize industrial automation.

MAJOR FINDINGS

AI-PLC integration advances industrial automation. Several significant findings from an in-depth investigation of this technology fusion show AI-enhanced PLC systems' transformational potential and complex influence on industrial processes. This chapter highlights our extensive study's findings.

Enhanced Efficiency and Productivity

Integration of AI with PLC systems significantly boosts efficiency and production. AI techniques, especially machine learning, and deep learning allow PLCs to optimize industrial processes in real-time. AI-driven PLCs conserve resources, increase throughput, and minimize waste by evaluating data and modifying operational parameters.

Key Findings

- The study found that AI-enabled predictive maintenance can reduce downtime by proactively scheduling maintenance and anticipating equipment breakdowns.
- AI-optimized processes improve product quality and production rates with real-time data modifications.

Improved Quality Control

AI, especially computer vision and deep learning, has transformed quality control and inspection. AI-powered PLCs can precisely detect faults and anomalies, ensuring that only high-quality products are sold.

Key Findings

- AI systems detect faults undetected by human inspectors, reducing rejection rates and increasing customer satisfaction.
- AI's continuous learning improves quality control methods by adjusting to new defect patterns.

Real-Time Adaptability

AI integration lets PLCs respond to changing situations in real-time. Managing complex and dynamic industrial contexts requires adaptation.

Key Findings

- AI-driven PLCs excel at dynamic control, changing operations with real-time feedback and data analysis.

- Real-time adaptation makes industrial processes more durable and flexible, allowing them to adjust quickly to unforeseen changes and disturbances.

Energy Efficiency and Sustainability

AI boosts energy efficiency and sustainability in industry. Industry reduces its environmental footprint using AI-driven PLCs that optimize energy use and promote sustainability.

Key Findings

- The study found that AI algorithms can optimize energy utilization in industrial processes, leading to lower energy consumption and operational expenses.
- Artificial intelligence promotes circular economy principles, recycling, and resource efficiency in production.

Enhanced Cybersecurity

AI adds cybersecurity challenges and offers innovative solutions to protect industrial automation systems.

Key Findings

- AI-driven cybersecurity techniques enhance PLC system security by detecting and responding to threats in real time.
- Blockchain and AI enable secure and transparent data transactions, boosting industrial network trust and integrity.

Human-AI Collaboration

The future of industrial automation is seamless human-AI collaboration. Industrial productivity and safety are improved with AI.

Key findings

- AI-AR devices and cobots improve human workers' efficiency and accuracy in challenging activities.
- Human-AI collaboration promotes continual learning and innovation, advancing industrial automation.

Regulatory and Ethical Considerations

AI integration in industrial automation requires solid legislative and ethical frameworks to guide its adoption and ensure responsible use.

Key Findings

- Ethical principles for AI promote openness, accountability, and fairness in AI-driven industrial processes.
- Safe and responsible AI application in PLC systems requires compliance with growing regulatory norms.

AI and PLC systems are combining to create a new era of industrial automation with greater efficiency, quality control, real-time flexibility, energy efficiency, cybersecurity, human-AI collaboration, and regulatory and ethical compliance (Ahmmed et al., 2021). These key findings show that AI can revolutionize industrial automation, enabling more innovative, resilient, and greener operations. Industrial automation has endless potential as enterprises use AI technologies.

LIMITATIONS AND POLICY IMPLICATIONS

Although there is great promise in integrating Artificial Intelligence (AI) with Programmable Logic Controllers (PLCs), many restrictions and policy issues need to be resolved before this can be done. Significant obstacles are posed by technical problems such as data quality, interoperability with current systems, and the expensive initial cost. Furthermore, AI-driven PLC cybersecurity vulnerabilities need strict precautions to be taken against any attacks. Policy ramifications emphasize the importance of legal frameworks that handle moral issues and guarantee the ethical application of AI in industrial automation. Clear standards are necessary to reduce dangers, safeguard data privacy, and promote confidence in AI technologies. Policies should also support SMEs' (small and medium-sized firms) access to AI technologies while fostering their creativity and competitiveness in the global market. Addressing these constraints and legislative issues will be imperative to fully utilize AI-enhanced PLC systems and move industrial automation toward a robust and sustainable future.

CONCLUSION

Programmable Logic Controllers (PLCs) and Artificial Intelligence (AI) signal a paradigm shift in industrial automation. Significant improvements in productivity, quality assurance, efficiency, and sustainability result from this union. Artificial intelligence (AI)-powered PLC systems improve product quality, forecast maintenance requirements, optimize operations in real-time, and dynamically adjust to shifting industrial conditions. Many important conclusions have been drawn from our investigation of AI-enhanced PLC systems. Artificial intelligence (AI) algorithms significantly increase productivity and consistency in product quality by optimizing process efficiency and resource utilization. AI's accuracy in identifying flaws helps quality control procedures, guaranteeing that only top-notch goods are sent onto the market. AI-driven PLCs' real-time adaptability makes industrial operations more resilient and able to react quickly to interruptions. AI's contribution to energy optimization also encourages sustainability by lowering operating expenses and environmental impact. Blockchain technology and artificial intelligence (AI) enable improved cybersecurity measures that protect industrial systems from ever-changing cyber threats. Working together, human laborers and AI systems stimulate creativity and ongoing learning, which propels automation forward. Robust legal and ethical frameworks are also required for integrating AI in industrial automation to guarantee responsible and open use. Establishing these frameworks is crucial for the safe and long-term implementation of AI technologies

In summary, integrating AI with PLC systems represents a significant advancement in industrial automation. Thanks to this integration's disruptive potential, future industrial operations are expected to be more innovative, efficient, and sustainable. As sectors adopt AI, the potential for innovation and advancement is endless, paving the way for a new era of industrial brilliance.

REFERENCES

- Addimulam, S., Mohammed, M. A., Karanam, R. K., Ying, D., Pydipalli, R., Patel, B., Shajahan, M. A., Dhameliya, N., & Natakam, V. M. (2020). Deep Learning-Enhanced Image Segmentation for Medical Diagnostics. *Malaysian Journal of Medical and Biological Research*, 7(2), 145-152. <https://mjnbr.my/index.php/mjnbr/article/view/687>
- Ahmed, S., Sachani, D. K., Natakam, V. M., Karanam, R. K. (2021). Stock Market Fluctuations and Their Immediate Impact on GDP. *Journal of Fareast International University*, 4(1), 1-6. <https://www.academia.edu/121248146>
- Anumandla, S. K. R. (2018). AI-enabled Decision Support Systems and Reciprocal Symmetry: Empowering Managers for Better Business Outcomes. *International Journal of Reciprocal Symmetry and Theoretical Physics*, 5, 33-41. <https://upright.pub/index.php/ijrstp/article/view/129>
- Barmada, S., Dionigi, M., Mezzanotte, P., Tucci, M. (2017). Design and Experimental Characterization of a Combined WPT-PLC System. *Wireless Power Transfer*, 4(2), 160-170. <https://doi.org/10.1017/wpt.2017.11>
- Dhameliya, N. (2022). Power Electronics Innovations: Improving Efficiency and Sustainability in Energy Systems. *Asia Pacific Journal of Energy and Environment*, 9(2), 71-80. <https://doi.org/10.18034/apjee.v9i2.752>
- Dhameliya, N., Mullangi, K., Shajahan, M. A., Sandu, A. K., & Khair, M. A. (2020). Blockchain-Integrated HR Analytics for Improved Employee Management. *ABC Journal of Advanced Research*, 9(2), 127-140. <https://doi.org/10.18034/abcjar.v9i2.738>
- Dhameliya, N., Sai Sirisha Maddula, Kishore Mullangi, & Bhavik Patel. (2021). Neural Networks for Autonomous Drone Navigation in Urban Environments. *Technology & Management Review*, 6, 20-35. <https://upright.pub/index.php/tmr/article/view/141>
- Ju, M. L., Zhai, X. Q., Zhang, Q. (2014). Application of Siemens S7-300 PLC in the Thermal Power Plant Flue Gas Desulfurization Control System. *Applied Mechanics and Materials*, 511-512, 1123-1127. <https://doi.org/10.4028/www.scientific.net/AMM.511-512.1123>
- Jun-Ho, H. (2018). PLC-Integrated Sensing Technology in Mountain Regions for Drone Landing Sites: Focusing on Software Technology. *Sensors*, 18(8), 2693. <https://doi.org/10.3390/s18082693>
- Koehler, S., Dhameliya, N., Patel, B., & Anumandla, S. K. R. (2018). AI-Enhanced Cryptocurrency Trading Algorithm for Optimal Investment Strategies. *Asian Accounting and Auditing Advancement*, 9(1), 101-114. <https://4ajournal.com/article/view/91>
- Liu, X., Liu, H., Liu, J., Xu, D. (2017). An Automatic Networking and Routing Algorithm for Mesh Network in PLC System. *IOP Conference Series. Materials Science and Engineering*, 199(1). <https://doi.org/10.1088/1757-899X/199/1/012092>
- Maddula, S. S. (2018). The Impact of AI and Reciprocal Symmetry on Organizational Culture and Leadership in the Digital Economy. *Engineering International*, 6(2), 201-210. <https://doi.org/10.18034/ei.v6i2.703>
- Maddula, S. S., Shajahan, M. A., & Sandu, A. K. (2019). From Data to Insights: Leveraging AI and Reciprocal Symmetry for Business Intelligence. *Asian Journal of Applied Science and Engineering*, 8(1), 73-84. <https://doi.org/10.18034/ajase.v8i1.86>
- Mohammed, M. A., Kothapalli, K. R. V., Mohammed, R., Pasam, P., Sachani, D. K., & Richardson, N. (2017). Machine Learning-Based Real-Time Fraud Detection in Financial Transactions. *Asian Accounting and Auditing Advancement*, 8(1), 67-76. <https://4ajournal.com/article/view/93>

- Mohammed, R., Addimulam, S., Mohammed, M. A., Karanam, R. K., Maddula, S. S., Pasam, P., & Natakam, V. M. (2017). Optimizing Web Performance: Front End Development Strategies for the Aviation Sector. *International Journal of Reciprocal Symmetry and Theoretical Physics*, 4, 38-45. <https://upright.pub/index.php/ijrstp/article/view/142>
- Mullangi, K. (2017). Enhancing Financial Performance through AI-driven Predictive Analytics and Reciprocal Symmetry. *Asian Accounting and Auditing Advancement*, 8(1), 57–66. <https://4ajournal.com/article/view/89>
- Mullangi, K. (2022). Transforming Business Operations: The Role of Information Systems in Enterprise Architecture. *Digitalization & Sustainability Review*, 2(1), 15-29. <https://upright.pub/index.php/dsr/article/view/143>
- Mullangi, K., Anumandla, S. K. R., Maddula, S. S., Vennapusa, S. C. R., & Mohammed, M. A. (2018). Accelerated Testing Methods for Ensuring Secure and Efficient Payment Processing Systems. *ABC Research Alert*, 6(3), 202–213. <https://doi.org/10.18034/ra.v6i3.662>
- Mullangi, K., Maddula, S. S., Shajahan, M. A., & Sandu, A. K. (2018). Artificial Intelligence, Reciprocal Symmetry, and Customer Relationship Management: A Paradigm Shift in Business. *Asian Business Review*, 8(3), 183–190. <https://doi.org/10.18034/abr.v8i3.704>
- Mullangi, K., Yarlagadda, V. K., Dhameliya, N., & Rodriguez, M. (2018). Integrating AI and Reciprocal Symmetry in Financial Management: A Pathway to Enhanced Decision-Making. *International Journal of Reciprocal Symmetry and Theoretical Physics*, 5, 42-52. <https://upright.pub/index.php/ijrstp/article/view/134>
- Nizamuddin, M., Natakam, V. M., Sachani, D. K., Vennapusa, S. C. R., Addimulam, S., & Mullangi, K. (2019). The Paradox of Retail Automation: How Self-Checkout Convenience Contrasts with Loyalty to Human Cashiers. *Asian Journal of Humanity, Art and Literature*, 6(2), 219-232. <https://doi.org/10.18034/ajhal.v6i2.751>
- Patel, B., Mullangi, K., Roberts, C., Dhameliya, N., & Maddula, S. S. (2019). Blockchain-Based Auditing Platform for Transparent Financial Transactions. *Asian Accounting and Auditing Advancement*, 10(1), 65–80. <https://4ajournal.com/article/view/92>
- Patel, B., Yarlagadda, V. K., Dhameliya, N., Mullangi, K., & Vennapusa, S. C. R. (2022). Advancements in 5G Technology: Enhancing Connectivity and Performance in Communication Engineering. *Engineering International*, 10(2), 117–130. <https://doi.org/10.18034/ei.v10i2.715>
- Pinter, J. M., Trohak, A. (2013). System Integration Methods for Voice-Commanded PLC Controlled Systems. *Applied Mechanics and Materials*, 309, 280. <https://doi.org/10.4028/www.scientific.net/AMM.309.280>
- Rabah, N. B., Saddem, R., Hmida, F. B., Carre-Menetrier, V., Tagina, M. (2017). Intelligent Case Based Decision Support System for Online Diagnosis of Automated Production System. *Journal of Physics: Conference Series*, 783(1). <https://doi.org/10.1088/1742-6596/783/1/012009>
- Rodriguez, M., Shajahan, M. A., Sandu, A. K., Maddula, S. S., & Mullangi, K. (2021). Emergence of Reciprocal Symmetry in String Theory: Towards a Unified Framework of Fundamental Forces. *International Journal of Reciprocal Symmetry and Theoretical Physics*, 8, 33-40. <https://upright.pub/index.php/ijrstp/article/view/136>
- Sachani, D. K., & Vennapusa, S. C. R. (2017). Destination Marketing Strategies: Promoting Southeast Asia as a Premier Tourism Hub. *ABC Journal of Advanced Research*, 6(2), 127-138. <https://doi.org/10.18034/abcjar.v6i2.746>

- Shajahan, M. A., Richardson, N., Dhameliya, N., Patel, B., Anumandla, S. K. R., & Yarlalagadda, V. K. (2019). AUTOSAR Classic vs. AUTOSAR Adaptive: A Comparative Analysis in Stack Development. *Engineering International*, 7(2), 161–178. <https://doi.org/10.18034/ei.v7i2.711>
- Shi, X. J. (2014). Design and Implementation of an Embedded PLC System with Applied-Information Technology. *Applied Mechanics and Materials*, 685, 401-404. <https://doi.org/10.4028/www.scientific.net/AMM.685.401>
- Vennapusa, S. C. R., Fadziso, T., Sachani, D. K., Yarlalagadda, V. K., & Anumandla, S. K. R. (2018). Cryptocurrency-Based Loyalty Programs for Enhanced Customer Engagement. *Technology & Management Review*, 3, 46-62. <https://upright.pub/index.php/tmr/article/view/137>
- Wang, R., Guan, Y., Liming, L., Li, X., Zhang, J. (2013). Component-Based Formal Modeling of PLC Systems. *Journal of Applied Mathematics*, 2013. <https://doi.org/10.1155/2013/721624>
- Yarlalagadda, V. K., Maddula, S. S., Sachani, D. K., Mullangi, K., Anumandla, S. K. R., & Patel, B. (2020). Unlocking Business Insights with XBRL: Leveraging Digital Tools for Financial Transparency and Efficiency. *Asian Accounting and Auditing Advancement*, 11(1), 101–116. <https://4ajournal.com/article/view/94>
- Ying, D., & Addimulam, S. (2022). Innovative Additives for Rubber: Improving Performance and Reducing Carbon Footprint. *Asia Pacific Journal of Energy and Environment*, 9(2), 81-88. <https://doi.org/10.18034/apjee.v9i2.753>
- Ying, D., Patel, B., & Dhameliya, N. (2017). Managing Digital Transformation: The Role of Artificial Intelligence and Reciprocal Symmetry in Business. *ABC Research Alert*, 5(3), 67–77. <https://doi.org/10.18034/ra.v5i3.659>

Cite as: Dhameliya, N. (2023). Revolutionizing PLC Systems with AI: A New Era of Industrial Automation. *American Digits: Journal of Computing and Digital Technologies*, 1(1), 33-48.

Copyright © 2023, Dhameliya, licensed to American Digits.

Conflicts of Interest Statement: No conflicts of interest have been declared by the author(s). Citations and references are mentioned in the information used.

License: This journal is licensed under a Creative Commons Attribution-Noncommercial 4.0 International License (CC-BY-NC).

Articles can be read and shared for noncommercial purposes under the following conditions:

- BY: Attribution must be given to the original source (Attribution)
- NC: Works may not be used for commercial purposes (Noncommercial)