



HAL
open science

MAGNETIC RESONANCE ELASTOGRAPHY (MRE) LUNG STIFFNESS: APPLICATION TO LONG COVID PATIENTS

Sabine F Bensamoun, Kiaran P McGee, Mashhour Chakouch, Philippe
Pouletaut, Fabrice Charleux

► **To cite this version:**

Sabine F Bensamoun, Kiaran P McGee, Mashhour Chakouch, Philippe Pouletaut, Fabrice Charleux. MAGNETIC RESONANCE ELASTOGRAPHY (MRE) LUNG STIFFNESS: APPLICATION TO LONG COVID PATIENTS. International Tissue Elasticity Conference, Oct 2024, Lyon, France. hal-04647607

HAL Id: hal-04647607

<https://hal.science/hal-04647607>

Submitted on 15 Jul 2024

HAL is a multi-disciplinary open access archive for the deposit and dissemination of scientific research documents, whether they are published or not. The documents may come from teaching and research institutions in France or abroad, or from public or private research centers.

L'archive ouverte pluridisciplinaire **HAL**, est destinée au dépôt et à la diffusion de documents scientifiques de niveau recherche, publiés ou non, émanant des établissements d'enseignement et de recherche français ou étrangers, des laboratoires publics ou privés.



Distributed under a Creative Commons Attribution - NoDerivatives 4.0 International License

MAGNETIC RESONANCE ELASTOGRAPHY (MRE) LUNG STIFFNESS: APPLICATION TO LONG COVID PATIENTS

Sabine F Bensamoun^{1*}, Kiaran P McGee², Mashhour Chakouch¹, Philippe Pouletaut¹, Fabrice Charleux³

¹Université de technologie de Compiègne, CNRS, BMBI, UMR 7338, 60200 Compiègne, FRANCE; ²Mayo Clinic & Foundation, Radiology Department, Rochester, Minnesota, USA; ³ACRIM-Polyclinique Saint Côme, Radiology department, 60200 Compiègne, FRANCE.

Background: Long COVID patients revealed more or less respiratory difficulties [1]. During the pandemic CT scan was the main medical test to evaluate the features of the COVID lung represented with ground class opacity [2-3]. However, CT uses X-rays, limiting the regular follow-up of patients. Thus, alternative imaging modalities (MRI, US) enable to subjectively characterize the structural properties of lung tissue.

Aims: The purpose of the present study was to quantify the functional behavior with personalized cartographies of lung stiffness for long COVID patients and to follow up the evolution of this quantitative mapping over time.

Methods: Seven healthy and seven long COVID participants referred for a lung CT test were recruited (#A01496-33) at the ACRIM department. All participants underwent CT and MRE tests. CT was performed with pixel size 0.73 mm, slice thickness 0.62 mm and 100-140 kV. A senior radiologist subjectively analyzed the structural properties (bronchial thickness,...). Moreover, the slice level where the intermediate trunk was clover-shaped in appearance was identified for future MRE assessment of the same lung region. CT density was calculated by converting the measured Hounsfield number into density units [4]. Less than one month later, a first MR lung density test followed by a first MRE test were performed. MR lung density obtained from a fast gradient-echo sequence was calibrated with a Gadolinium-doped water phantom placed on the sternum, and validated with the CT density values. MRE test was performed on a 1.5 T MRI, with a 22 s breath-hold, and a driver placed on the right lung inducing mechanical shear waves (50 Hz). A spin-echo echo-planar sequence, including a motion-encoding gradient, was applied with four offsets to obtain four axial phase images. The mechanical properties of the right lung were measured within a contour drawn by 2 operators. The true lung stiffness was then calculated from the phase images using multi-model direct inversion and a homemade post-processing (pixel-wise correction for density...). The monitoring (lung density, stiffness) was carried out after 4.7 to 11.2 months for each COVID patient.

Results: The density for COVID patients were significantly ($P = 0.047$) greater (170 kg.m^{-3}) compared to healthy (125 kg.m^{-3}) subjects. The evolution of the MR lung density over time, i.e from MR test N°1 to N°2, varies differently from one patient to another. In the first MRE test, the stiffness for the healthy subjects was always in the same range (about 1 kPa) while the COVID patients showed a larger range (from $1.39 \pm 0.04 \text{ kPa}$ to $2.05 \pm 0.02 \text{ kPa}$). After a minimum delay of 4 months, the stiffness decreased (from 22% to 40%) for every COVID subject (Fig 1-2). Inter-operator correlation coefficient was excellent (0.78-0.97).

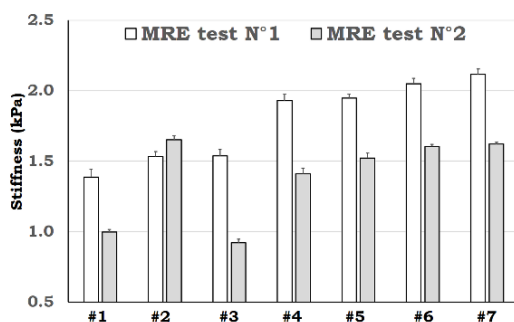


Fig 1. Evolution of the lung stiffness values in the MRE test N°1 and MRE test N°2 for the 7 long COVID patients.

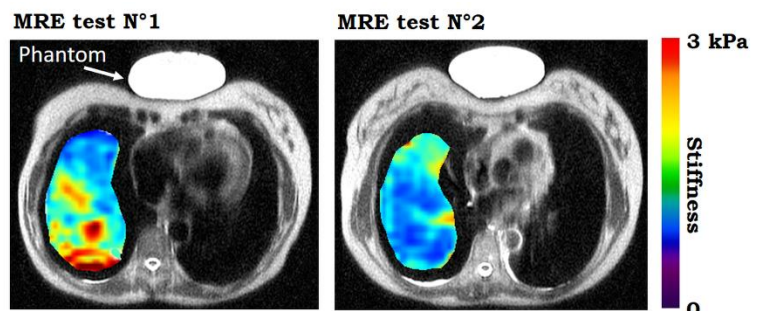


Fig 2. Evolution of the personalized lung stiffness for the patient #3 (cf. Fig 1).

Conclusions: MRE test is enough sensitive to monitor disease-induced change in lung stiffness. This non-invasive modality could yield complementary information as a new imaging biomarker to follow up long COVID patients.

Acknowledgements: This work was supported by the CPER TECSANTE

References: [1] Christopher et al PLOS Global Public Health 2024; [2] Hani et al Diagnostic and Interventional Imaging 2020; [3] Chakouch et al State of Art in Bioengineering 2022; [4] Schneider et al PMB 1996.