



**HAL**  
open science

# Probabilistic Mapping of the Effect of Deep Brain Stimulation in the Ventral Thalamus for Essential Tremor from Intraoperative Stimulation Data: a Proof of Concept

Dorian Vogel, Teresa Nordin, Stefanie Feiler, Karin Wardell, Jerome Coste, Jean-Jacques Lemaire, Simone Hemm-Ode

## ► To cite this version:

Dorian Vogel, Teresa Nordin, Stefanie Feiler, Karin Wardell, Jerome Coste, et al.. Probabilistic Mapping of the Effect of Deep Brain Stimulation in the Ventral Thalamus for Essential Tremor from Intraoperative Stimulation Data: a Proof of Concept. 2024 NYC Neuromodulation Conference, Aug 2024, New York, NY, United States. hal-04646679

**HAL Id: hal-04646679**

**<https://hal.science/hal-04646679v1>**

Submitted on 12 Jul 2024

**HAL** is a multi-disciplinary open access archive for the deposit and dissemination of scientific research documents, whether they are published or not. The documents may come from teaching and research institutions in France or abroad, or from public or private research centers.

L'archive ouverte pluridisciplinaire **HAL**, est destinée au dépôt et à la diffusion de documents scientifiques de niveau recherche, publiés ou non, émanant des établissements d'enseignement et de recherche français ou étrangers, des laboratoires publics ou privés.



Distributed under a Creative Commons Attribution - NonCommercial - NoDerivatives 4.0 International License



# Probabilistic Mapping of the Effect of Deep Brain Stimulation in the Ventral Thalamus for Essential Tremor from Intraoperative Stimulation Data: a Proof of Concept.

Vogel D.<sup>1</sup>, Nordin T.<sup>2</sup>, Feiler S.<sup>3</sup>, Wårdell K.<sup>2</sup>, Coste J.<sup>4</sup>, Lemaire J.-J.<sup>4</sup>, Hemm S.<sup>1,2</sup>

- <sup>1</sup> Institute for Medical Engineering and Medical Informatics, School of Life Sciences University of Applied Sciences and Arts Northwestern Switzerland, Muttenz, Switzerland
- <sup>2</sup> Department of Biomedical Engineering, Linköping University, Linköping, Sweden
- <sup>3</sup> Dynamics and statistics of Complex Systems, School of Life Sciences, University of Applied Sciences and Arts Northwestern Switzerland, Muttenz, Switzerland
- <sup>4</sup> University Hospital Clermont-Ferrand, Clermont-Ferrand, France

## Background

Deep brain stimulation (DBS) is commonly used as a complement to medication in the management of symptoms of movement disorders such as Parkinson's disease (PD) and essential tremor (ET). Electrical stimulation is delivered in the brain via multi-contacts electrodes to structures of the basal ganglia. Stimulation tests during awake surgery allow to observe the symptomatic response. This approach has been the standard procedure for several decades, and generates large amount of data, with many contact positions and amplitudes tested. Most studies in the literature focus on analyzing data after surgery, which is less detailed in the spatial and stimulation amplitude dimensions.

We present a pipeline for creating probabilistic stimulation maps and exemplified it on the data from 6 essential tremor patients.

## Material and Methods

The data from 19 patients (PD:13, ET:6) operated at the university hospital Clermont-Ferrand (France) who were implanted awake [1] with accelerometer-based [2] tremor recording was used in this work.

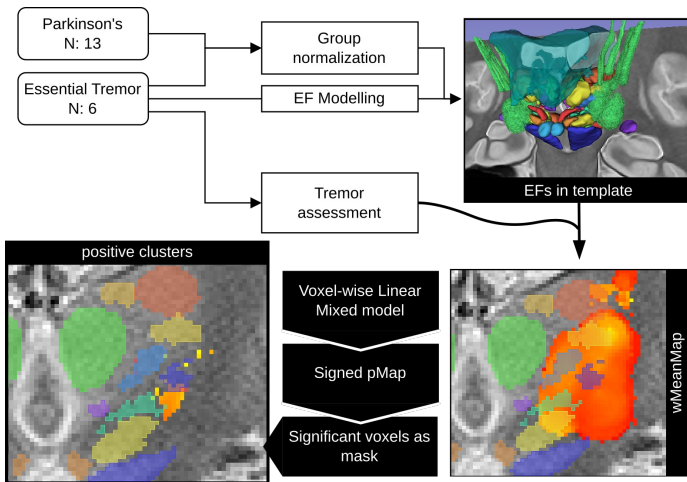


Figure 1: Probabilistic stimulation map workflow. The MRI data from all patients (PD and ET) was used for the creation of an anatomical template. The data from the 6 ET patients was used for EF simulations, and generation of the wMeanMap. In each voxel, a linear mixed model was then used to estimate the significance of the relation between EF norm and tremor improvement.

### Group-Specific anatomical template:

- From all 19 patients (PD:13, ET:6)
- Iterative, non-linear registration [3]

### Electric field simulations:

- patient-specific tissue conductivity derived from T1 MRI
- Finite element method, current conservation
- Activation variable: electric field norm (EF)
- EF resampled to rectilinear grid (0.5x0.5x0.5mm)

### Tremor assessment:

- 3D acceleration sensor on contra-lateral wrist
- Metric: relative tremor suppression (%)

### Normative analysis:

- EFs transformed to atlas space → many EF values for each voxel
- Average effect weighted by EF norm in each voxel → wMeanMap
- In each voxel: linear mixed model (LMM); tremor vs EF norm
- Significant voxels extracted, voxels with positive/negative slopes templates used. This was with only 6 patients but very dense data. With more patients, maps will more through validated dans used target prediction.

### Verification:

- Comparison of tremor suppression predicted against actual
- Tremor suppression prediction: average of voxels from positive

significant cluster included in each EF (0.2V/mm threshold)

Linear regression between predicted and observed effect.

Comparison in left hemisphere with single cluster obtained by Nowacki [4] with dice overlap and distances between centers of mass of clusters.

## Results

**Positive clusters:** taken at the largest section of the Vim, target for all 6 ET patients the map presents two clusters:

posterior subthalamic area (PSA)

at the junction between Vim, VO and VCM/VCL.

Mean tremor suppression scores are higher in the PSA cluster.

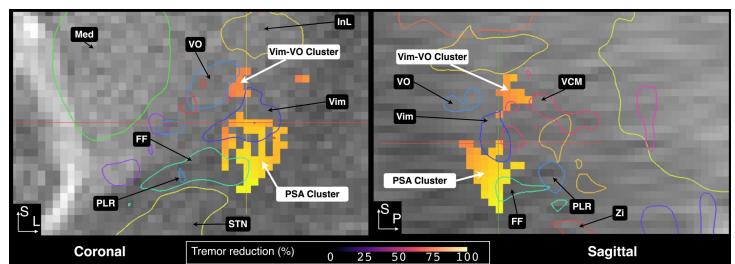


Figure 2: A. sagittal slice of the clusters significant for positive response to stimulation. B. 3D view of the positive (violet, black vertices) and negative (green, black vertices) clusters around Vim.

### Verification:

Verification for the significant clusters are presented in Figure 3. On both sides, the linear regression for Vim-VO and PSA clusters result in significant correlation.

- Left: the correlation is stronger in the Vim-VO cluster (R=0.31) than in the PSA (R=0.25)
- Right: the correlation is stronger in the PSA (R=0.49) than in the Vim/VO (R=0.27)

### Comparison with Nowacki:

Cluster	Vim-Vo	PSA
Overlap	No	Yes
Distance between centers (LPS)[mm]	4.32,	0.94,
	-3.43,	2.10,
	18.95	4.21

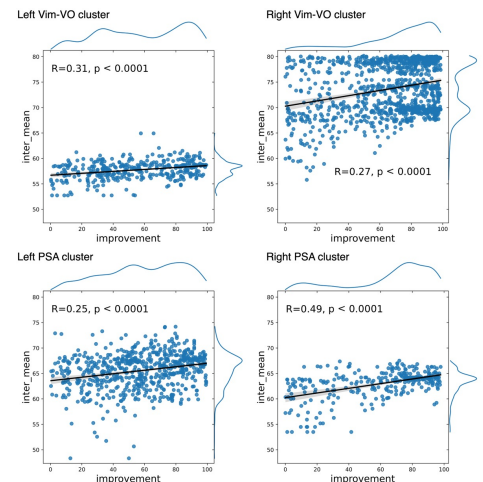


Figure 3: Linear regression of predicted (vertical axis) against observed (horizontal axis) tremor suppression score.

## Discussion

A group-specific workflow was implemented and allowed to identify the PSA and Vim/VO regions as positive clusters; these clusters allow to predict tremor suppression in the original data. Both clusters were compared to the cluster obtained in another study with post-operative simulation data and the PSA clusters are situated less than 5mm from each other. This difference is minimal and may be caused by the different anatomical templates used. This was with only 6 patients but very dense data. With more patients, maps will more through validated dans used target prediction.

### Acknowledgement:

Financially support from the School of Life Sciences, FHNW; the Swedish Foundation for Strategic research (BD15-0032), the Swedish research council (2016-03564) and the Swiss National Science foundation(205320\_20749L).