



HAL
open science

Exploring the richness of the French Galaxy Ecosystem

Bérénice Batut, Gildas Le Corguillé, Yvan Le Bras, Loraine Brillet-Guéguen,
Fabien Mareuil, Anthony Bretaudeau

► **To cite this version:**

Bérénice Batut, Gildas Le Corguillé, Yvan Le Bras, Loraine Brillet-Guéguen, Fabien Mareuil, et al..
Exploring the richness of the French Galaxy Ecosystem. GCC 2024 - Galaxy Community Conference,
Jun 2024, Brno, Czech Republic. , pp.1-1, 2024, 10.7490/f1000research.1119765.1 . hal-04644779

HAL Id: hal-04644779

<https://hal.science/hal-04644779v1>

Submitted on 11 Jul 2024

HAL is a multi-disciplinary open access archive for the deposit and dissemination of scientific research documents, whether they are published or not. The documents may come from teaching and research institutions in France or abroad, or from public or private research centers.

L'archive ouverte pluridisciplinaire **HAL**, est destinée au dépôt et à la diffusion de documents scientifiques de niveau recherche, publiés ou non, émanant des établissements d'enseignement et de recherche français ou étrangers, des laboratoires publics ou privés.



Distributed under a Creative Commons Attribution 4.0 International License

Exploring the Richness of the French Galaxy Ecosystem

Bérénice Batut^{1,2}, Gildas Le Corguillé^{1,3}, Yvan Le Bras⁴, Loraine Brillet-Guéguen^{3,5}, Fabien Mareuil⁶, GT Galaxy, Anthony Bretaudeau⁷

Corresponding authors: berenice.batut@france-bioinformatique.fr, gildas.le-corguille@france-bioinformatique.fr, anthonybretaudeau@irisa.fr

¹CNRS, Institut Français de Bioinformatique, IFB-Core, UAR 3602, ²Plateforme A&E, Mésocentre Clermont-Auvergne, Université Clermont Auvergne, ³Sorbonne Université, CNRS, FR3026, ABIMS-IFB, Station Biologique, Roscoff, ⁴Muséum national d'Histoire naturelle, UAR Patrimoine, Station Marine de Concarneau, FCNRS, Sorbonne Université, Laboratory of Integrative Biology of Marine Models, Station Biologique, Roscoff, ⁵Institut Pasteur, Université Paris Cité, Bioinformatics and Biostatistics Hub, ⁶GenOuest, University of Rennes, INRIA, CNRS, IRISA, ⁷

The French Bioinformatics Community has embraced Galaxy since its inception, with a pivotal moment being the Galaxy Tour de France led by Nate Coraor, Anton Nekrutenko, and James Taylor in 2012. This adoption has led to the establishment of over 10 Galaxy servers across France, catering to diverse local needs and specialized thematic areas such as ecology, biodiversity, NGS, proteomics, and more.

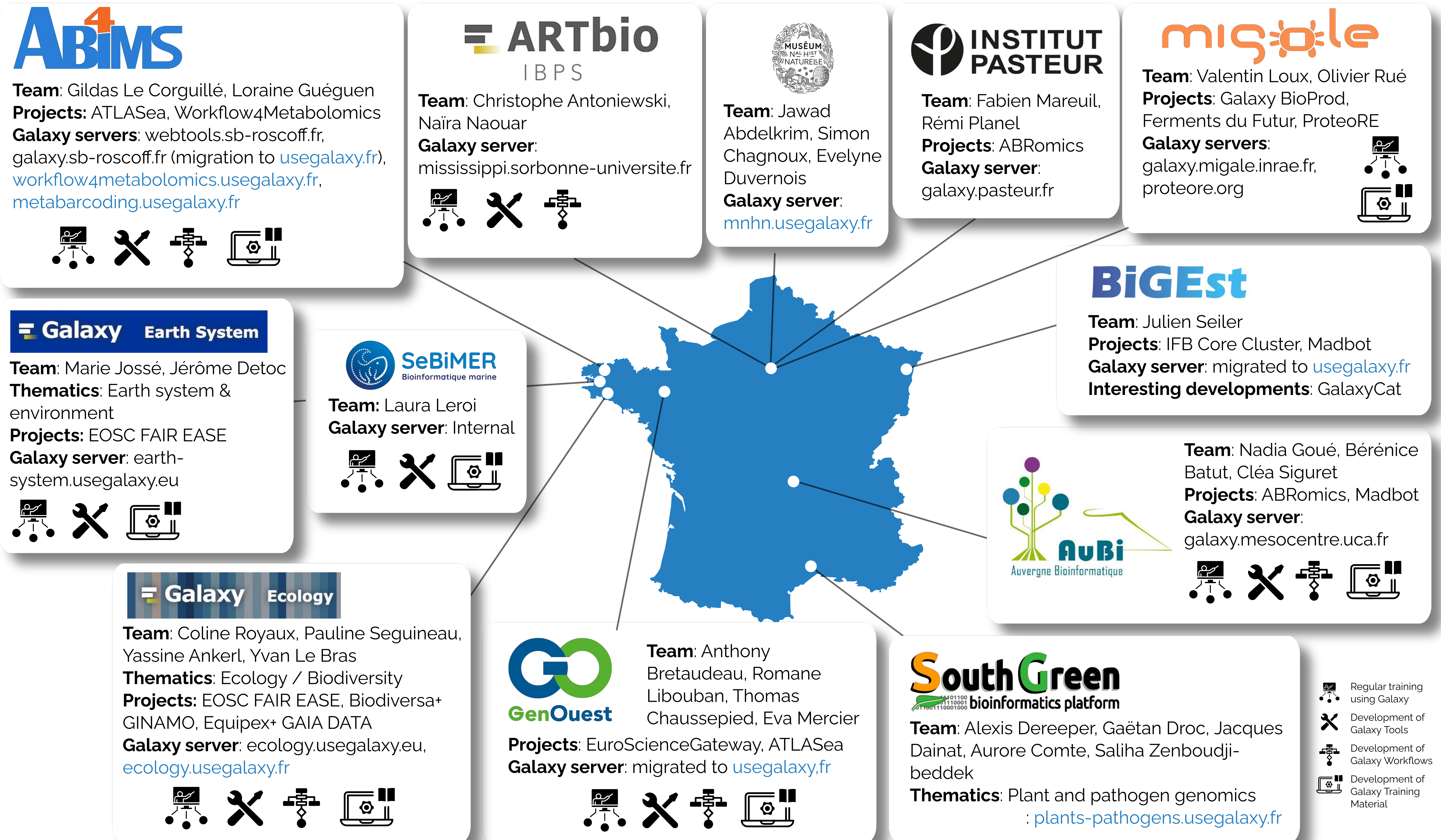
To foster cohesion and synergy within the community, a Galaxy Working Group led by the French Bioinformatics Institute facilitates regular interactions.

Objectives:

1. Meeting every 2 months
2. Connect Galaxy users, developers, admins across France,
3. Share knowledge (ELIXIR, Galaxy Community, etc),
4. Support UseGalaxy.fr, and
5. Combat misconceptions about Galaxy within the French scientific community



Mailing list: bit.ly/galaxy-gt



- Regular training using Galaxy
- Development of Galaxy Tools
- Development of Galaxy Workflows
- Development of Galaxy Training Material

Team

Projects: ATLASea, ABRomics, Galaxy BioProd
Galaxy server: usegalaxy.fr
Support: community.france-bioinformatique.fr
GitLab: gitlab.com/ifb-elixirfr/usegalaxy-fr

PULSAR



UseGalaxy.fr

Launch: 2019

On the last year:

- 6.5k Users
- 4.5M Jobs
- 3k Active Users
- 1.5M+ Jobs

Host: Institut Français de Bioinformatique

- 1.7k+ Tools
- 20+ Interactive Tools
- 8.3k CPU Cores
- 52 TB of RAM
- GPU Cards

Domain-centric Galaxy subdomains: Workflow4Metabolomics, ProteoRE, Covid19, Metabarcoding, Met4J, MNHN, Ecology, Plants-Pathogens

TiaaS: Since February, 2022

Support

- 80 Events
- 1.9k+ taught Students
- Online by the community