



HAL
open science

A pipeline from MRI 4D Flow sequence to numerical simulation

Esther Fontaine, Stéphanie Salmon, Nicolas Passat, Christophe Portefaix

► **To cite this version:**

Esther Fontaine, Stéphanie Salmon, Nicolas Passat, Christophe Portefaix. A pipeline from MRI 4D Flow sequence to numerical simulation. European Society for Magnetic Resonance in Medicine and Biology Annual Scientific Meeting (ESMRMB), Oct 2024, Barcelona, Spain. hal-04638960

HAL Id: hal-04638960

<https://hal.science/hal-04638960v1>

Submitted on 10 Oct 2024

HAL is a multi-disciplinary open access archive for the deposit and dissemination of scientific research documents, whether they are published or not. The documents may come from teaching and research institutions in France or abroad, or from public or private research centers.

L'archive ouverte pluridisciplinaire **HAL**, est destinée au dépôt et à la diffusion de documents scientifiques de niveau recherche, publiés ou non, émanant des établissements d'enseignement et de recherche français ou étrangers, des laboratoires publics ou privés.

A PIPELINE FROM MRI 4D FLOW SEQUENCE TO NUMERICAL SIMULATION

E. FONTAINE^(1,2), S. SALMON⁽²⁾, N. PASSAT⁽¹⁾, C. PORTEFAIX^(1,3)

⁽¹⁾ CRESTIC, Université de Reims Champagne-Ardenne, Reims, France

⁽²⁾ LMR, CNRS, Université de Reims Champagne-Ardenne, Reims, France

⁽³⁾ Centre Hospitalo-Universitaire de Reims, France

INTRODUCTION

- Purpose:** Assess **patient-specific hemodynamic factors** to facilitate the growth diagnosis of intracranial aneurysms.
- Materials:** Siemens Skyra 3T, **4D Flow sequence:** dynamic extension of Phase Contrast sequence, 3D flow encoding.
- Methods:** The sequence was initially developed for large vessels, and **has to be optimised** for intracranial arteries. The optimisation is driven by tests with a vascular phantom and a pump.

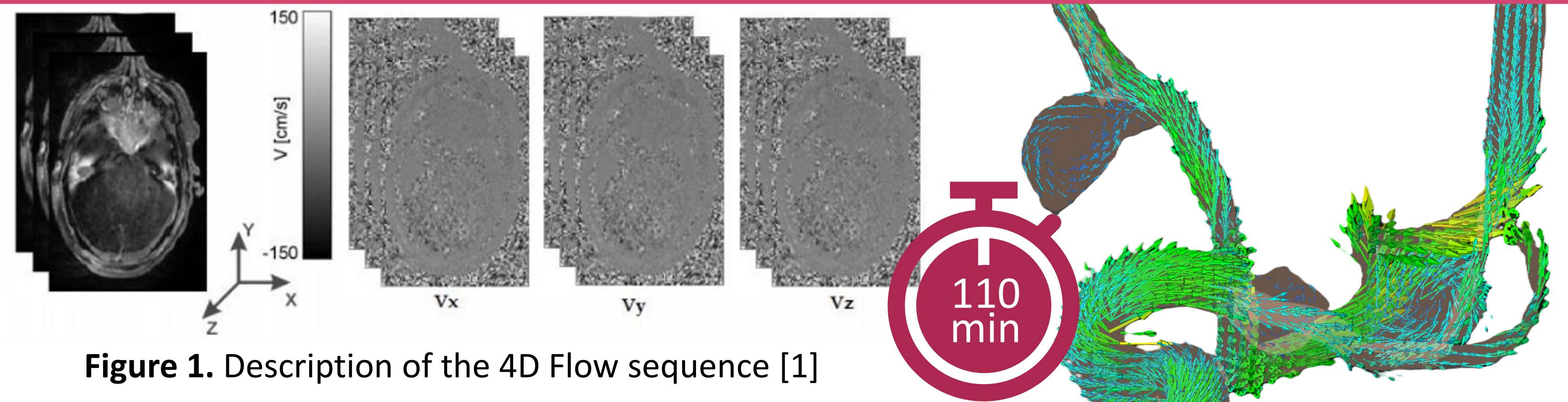


Figure 1. Description of the 4D Flow sequence [1]

OPTIMISED PARAMETERS

ACCELERATION FACTOR $\div 2.9$

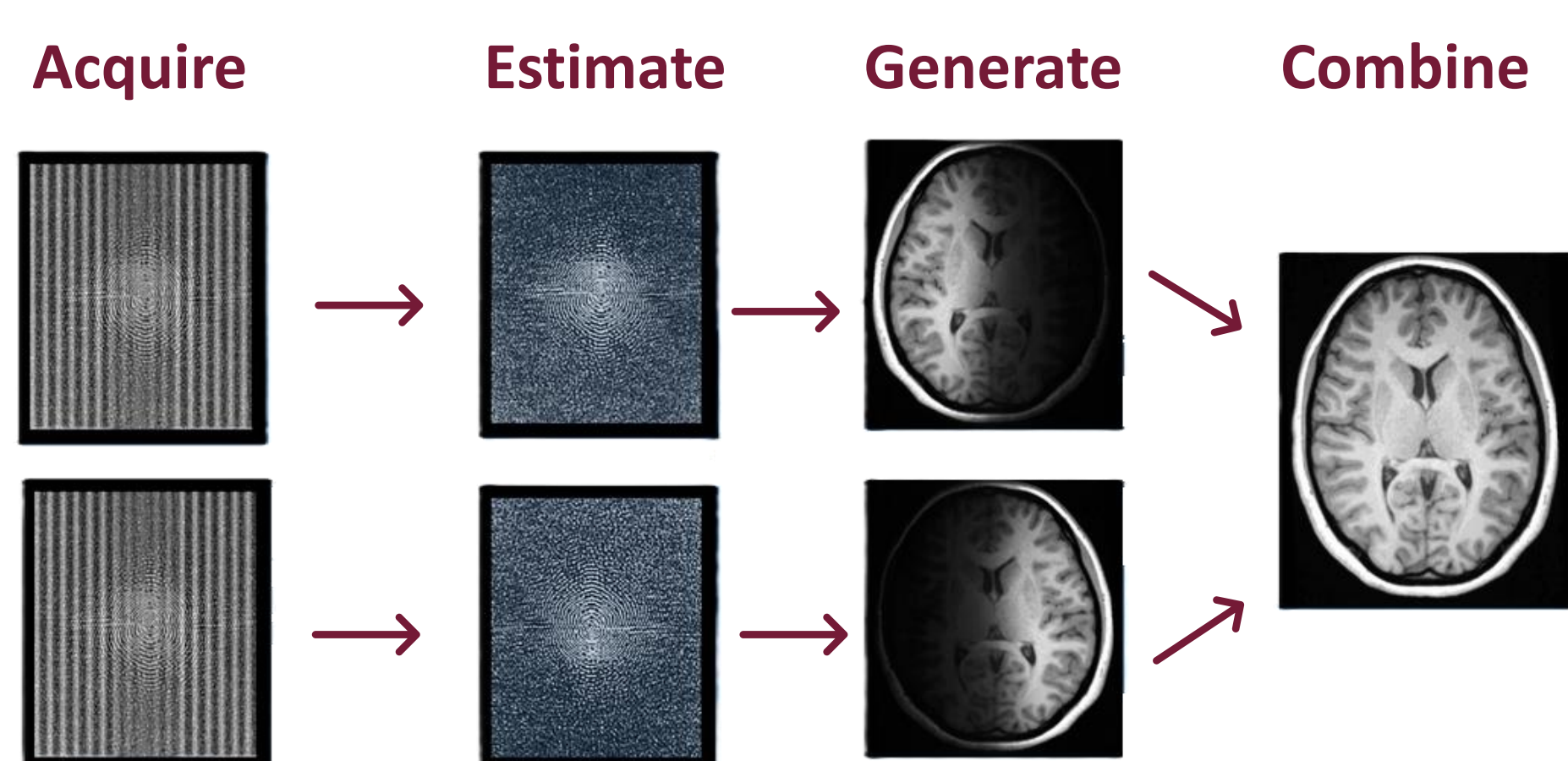


Figure 2. GRAPPA 2 Separated technique [2]

	GPA2	GPA3	GPA4	GPA5	GPA6	GPA7	GPA8
Ref	0.98	0.95	0.81	0.53	0.42	0.41	0.43

Figure 3. Correlation factors between reference and GRAPPA sequences

PHASE RESOLUTION $\div 2.5$

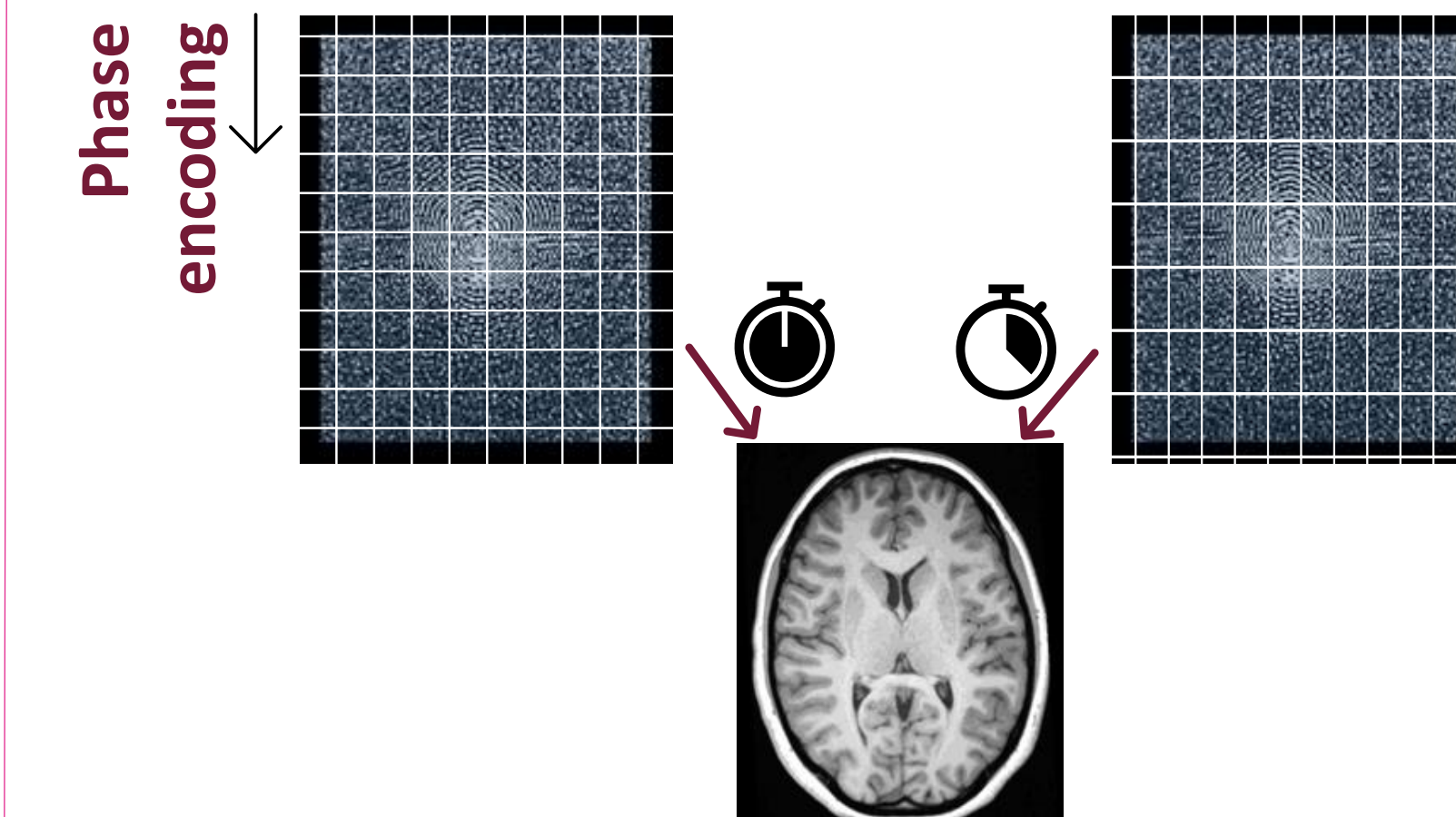
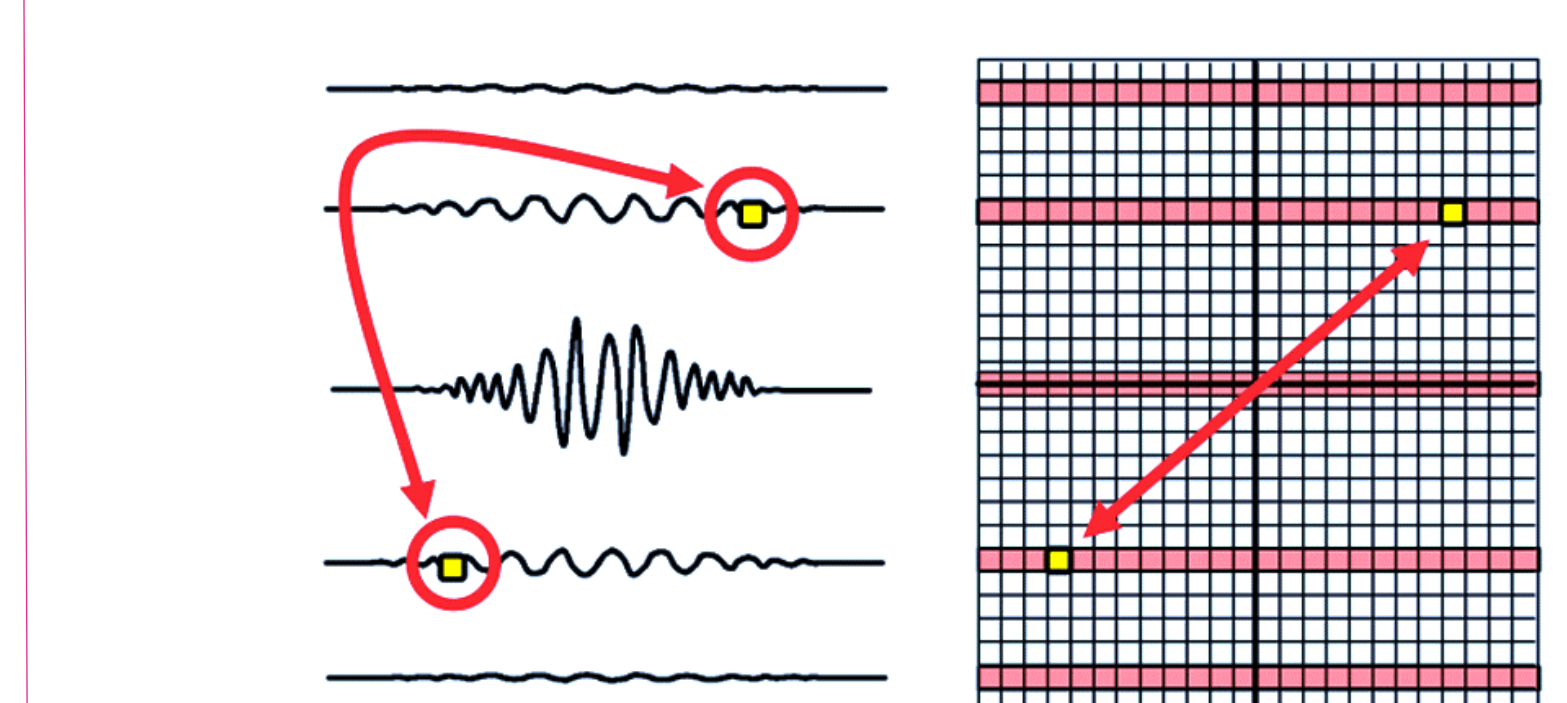


Figure 4. Phase Resolution technique [2]

	PR90%	PR80%	PR70%	PR60%	PR50%	PR40%	PR20%
Ref	0.99	0.99	0.99	0.99	0.98	0.97	0.92

Figure 5. Correlation factors between reference and Phase resolution sequences

PARTIAL FOURIER $\div 1.8$



Mirror images across the origin of k-space have identical amplitudes but opposite phases

	Phase	Slice	Phase & Slice
Ref	PF 7/8	PF 6/8	PF 7/8
	PF 6/8	PF 7/8	PF 6/8
	0.99	0.99	0.99
	0.99	0.99	0.99
	0.99	0.99	0.99
	0.99	0.99	0.98

Figure 7. Correlation factors between reference and Partial Fourier sequences

DISCUSSION AND CONCLUSION

- Other optimised parameters:
 - 50% Slice resolution** with a **0.98** correlation factor (reduction by 2 times)
 - Use of the **PreAcq Normalize** machine filter for **better segmentation** that does not change the correlation factors
- Sequence optimised by **24.6 times** with a **0.88** total correlation factor
- Same threshold used for each segmentation
- Use of a rigid phantom
- First tries on **patients** led to a **7min30s** sequence

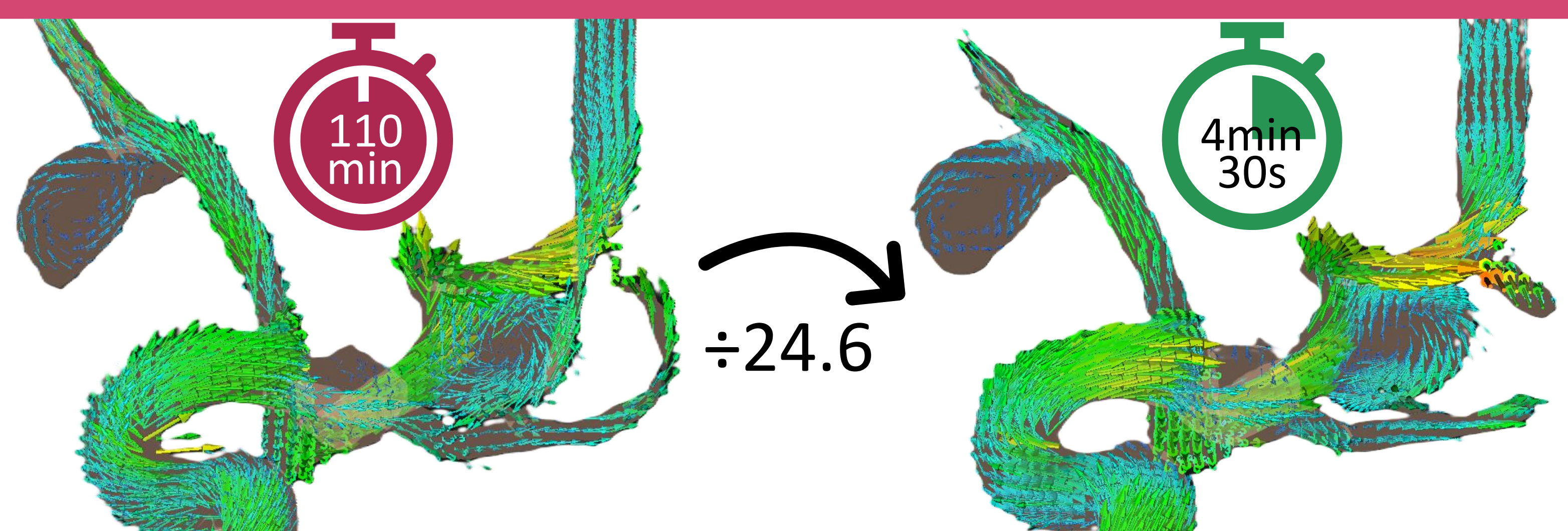


Figure 8. Visualisation of the reference and optimised sequence

PERSPECTIVES

- Comparison between the 4D flow sequence and the Computational Fluid Dynamics (CFD)** gold standard for biomarkers of aneurysm evolution [3]
- Generation of a **realistic simulation** of blood flow

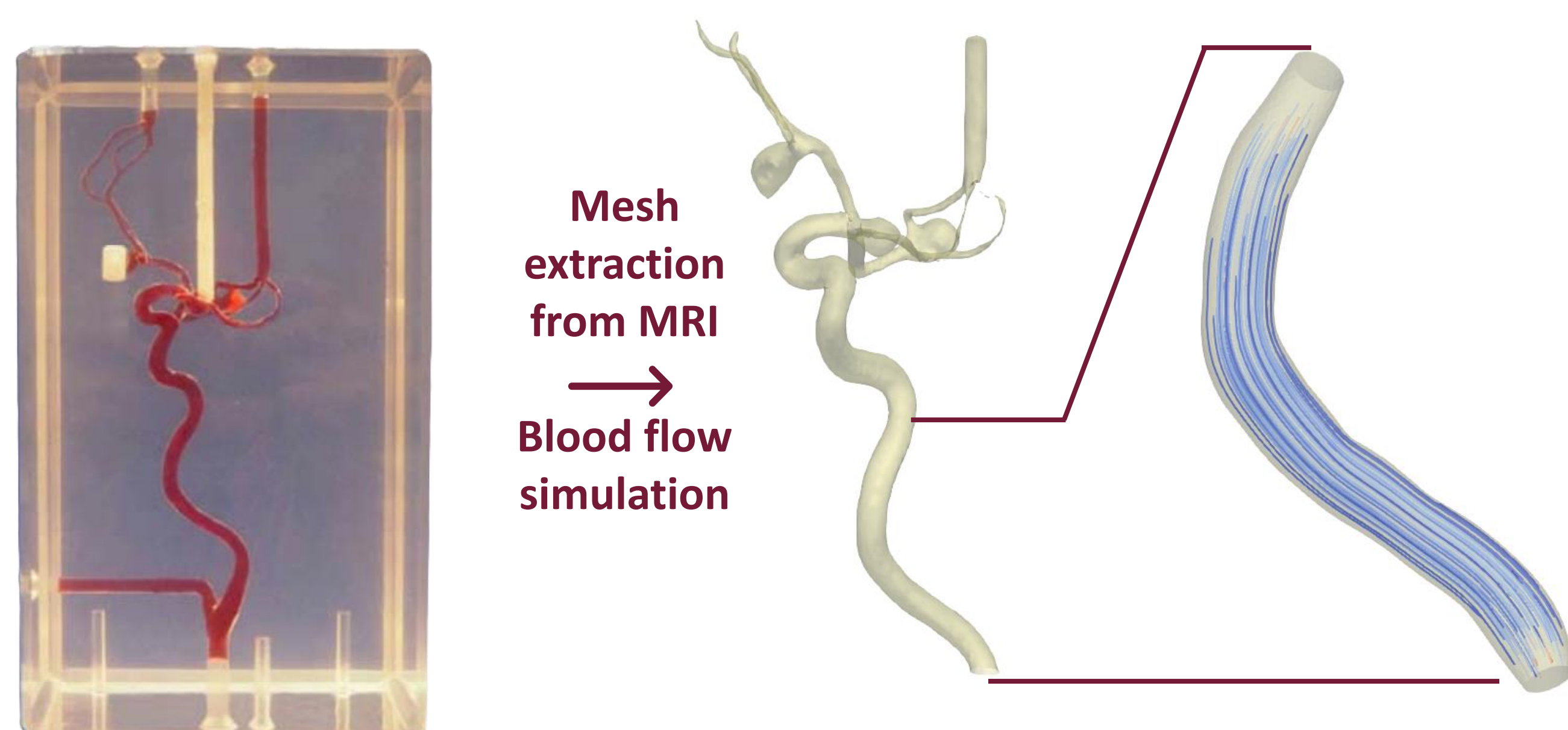


Figure 9. Description of the 4D Flow-CFD pipeline

- Use of the pipeline on healthy patients** and then on pathological patients to extract biomarkers of aneurysm evolution.

REFERENCES

- [1] M. Tamraoui, "Visualisation 4D des images médicales". Tech. Rep. 2019.
- [2] A. D. Elster. "Questions and answers in MRI." <https://mriquestions.com/> (accessed Sept. 4, 2024).
- [3] S. Salmon, M. Thiriet, and J.-F. Gerbeau, "Medical image - based computational model of pulsatile flow in saccular aneurysms", *ESAIM Math. Model. Numer. Anal.*, vol. 37, no. 4, pp. 663-679, 2003.

ACKNOWLEDGEMENTS



MR technicians team, especially A. Mendes-Carreira, for their help during the acquisitions

For the loan of their vascular phantom (Elastrat, Geneva) and ISMATEC MCP-Z flow pump

This work was partly funded by the Agence Nationale de la Recherche (Grant ANR-20-CE45-0011).