



HAL
open science

Field Operation Test Analysis of Connected Drivers' Response to GLOSA Messages and Impact on Traffic Efficiency

Kinjal Bhattacharyya, Pierre-Antoine Laharotte, Arthur Burianne,
Nour-Eddin El Faouzi

► **To cite this version:**

Kinjal Bhattacharyya, Pierre-Antoine Laharotte, Arthur Burianne, Nour-Eddin El Faouzi. Field Operation Test Analysis of Connected Drivers' Response to GLOSA Messages and Impact on Traffic Efficiency. TRB Annual Meeting 2022, Jan 2022, Washington, United States. hal-04638061

HAL Id: hal-04638061

<https://hal.science/hal-04638061v1>

Submitted on 8 Jul 2024

HAL is a multi-disciplinary open access archive for the deposit and dissemination of scientific research documents, whether they are published or not. The documents may come from teaching and research institutions in France or abroad, or from public or private research centers.

L'archive ouverte pluridisciplinaire **HAL**, est destinée au dépôt et à la diffusion de documents scientifiques de niveau recherche, publiés ou non, émanant des établissements d'enseignement et de recherche français ou étrangers, des laboratoires publics ou privés.

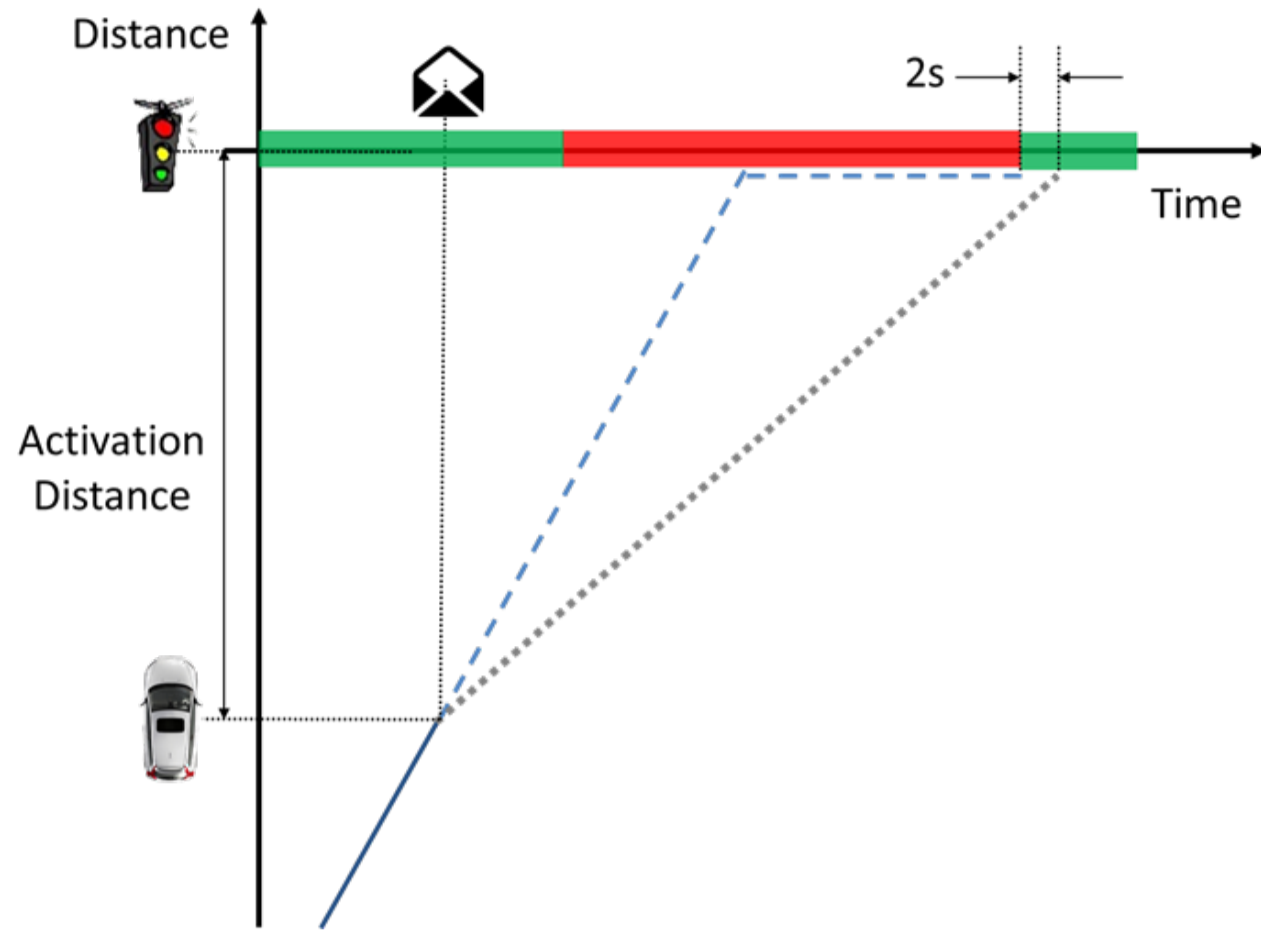
Field Operation Test Analysis of Connected Drivers' Response to GLOSA Messages and Impact on Traffic Efficiency

Kinjal Bhattacharyya¹, Pierre-Antoine Laharotte¹, Arthur Burianne^{1,2}, Nour-Eddin El Faouzi¹

¹ LICIT (Traffic and Transportation Engineering Laboratory, Université Gustave Eiffel, Lyon, France
² IRT System X, Lyon, FRANCE

Introduction

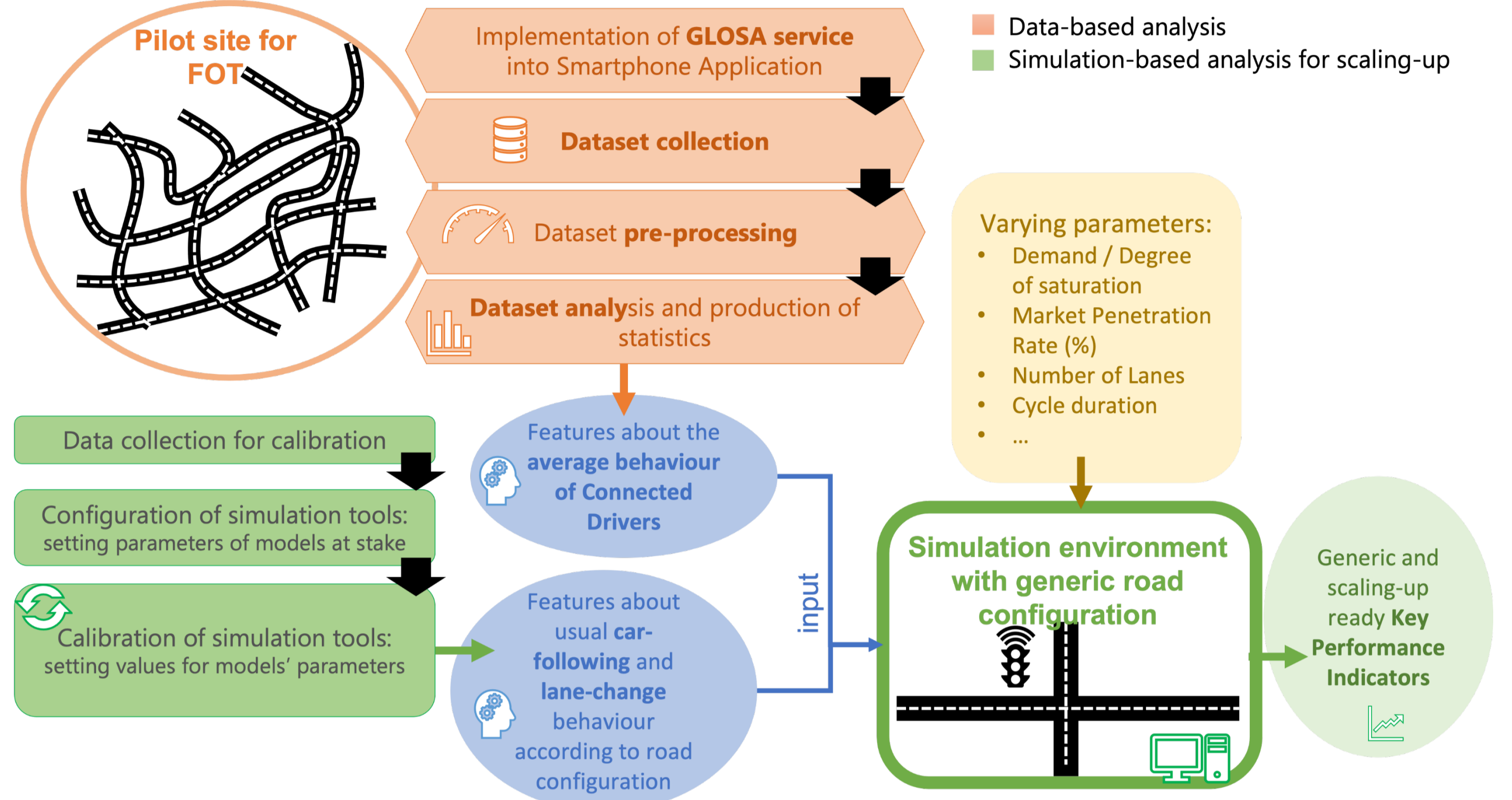
A widely-researched C-ITS service is the **Green Light Optimal Speed Advisory (GLOSA)** a.k.a. the **Eco-Cooperative Adaptive Cruise Control (Eco-CACC)**, provided to connected vehicles near signalized intersections



Two **primary objectives** were aimed in this study:

- Investigate the driver response behavior to GLOSA messages in a real-world naturalistic driving environment.
- Incorporate the driver response behavior in an integrated simulation environment to extend the results to generic situations and to scale up the assessed impacts.

Methodology



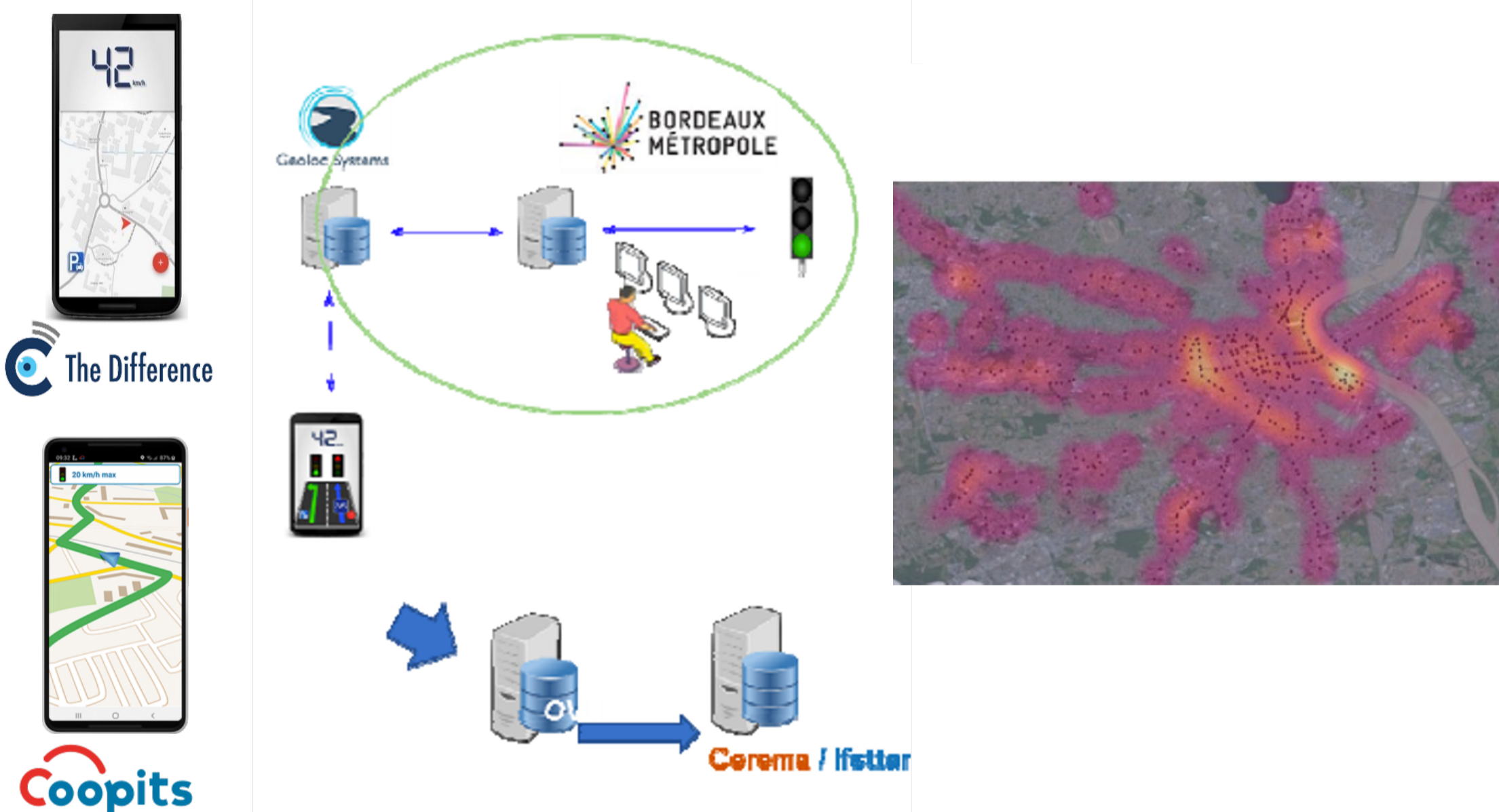
A 2-Phase Methodology

Results

Database Development

European projects **C-The-Difference** and **C-Roads**

- Bordeaux Métropole, France
- 600+ drivers



Response Rate

Average = 70%

Variable	Coefficient	S.E.	t	P> t	
Intercept	1.4566	0.409	3.565	0.000	
Rou_{CV}	LT	-0.2368	0.197	-1.201	0.230
N_b		-0.1357	0.125	-1.089	0.276
$Accel$		0.5612	0.145	3.862	0.000
D_{SL}	300m	-0.0966	0.396	-0.244	0.807
	250m	0.6634	0.399	1.663	0.096
	200m	0.8843	0.377	2.344	0.019
	150m	1.1664	0.377	3.095	0.002
	100m	0.8915	0.381	2.338	0.019
Sp_{diff}	25kmph	0.2559	0.247	1.036	0.300
	20kmph	0.3522	0.234	1.505	0.132
	15kmph	0.6298	0.216	2.910	0.004
	10kmph	0.5503	0.193	2.855	0.004
	5kmph	0.1818	0.175	1.040	0.299

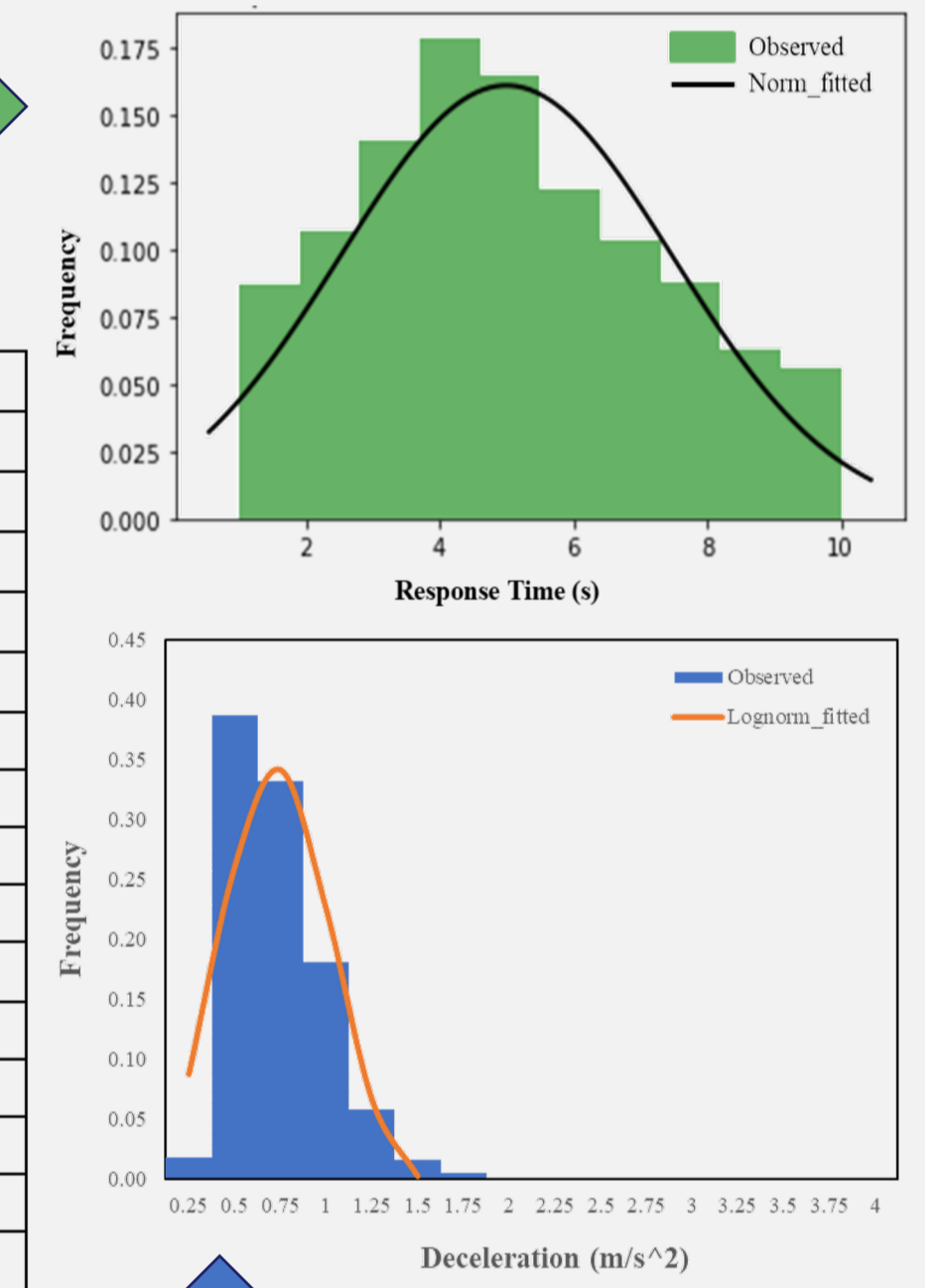
Log-likelihood = -770.21
McFadden Pseudo R-squared = 0.045

Response Time

Average = 5s, SD = 2.5s

Variable	Coefficient	S.E.	t	P> t	
Intercept	3.4995	0.608	5.76	0.000	
t_{peak}		-0.3374	0.288	-1.172	0.242
Rou_{CV}	LT	0.3666	0.264	1.387	0.166
$Accel$		0.9969	0.16	6.224	0.000
D_{SL}	300m	1.6071	0.654	2.458	0.014
	250m	1.4983	0.634	2.365	0.018
	200m	1.6094	0.609	2.644	0.008
	150m	1.1652	0.603	1.933	0.054
	100m	0.6429	0.61	1.053	0.292
Sp_{diff}	25kmph	-0.547	0.329	-1.664	0.096
	20kmph	-0.5396	0.299	-1.804	0.072
	15kmph	-0.2382	0.26	-0.917	0.36
	10kmph	-0.1461	0.239	-0.612	0.541
	5kmph	-0.2662	0.236	-1.128	0.26

Adjusted R-squared = 0.070



Speed Compliance

Average = 75%

Variable	Coefficient	S.E.	t	P> t	
Intercept	0.9448	0.075	12.552	0.000	
t_{peak}		0.0316	0.031	1.014	0.311
Rou_{CV}	RT	-0.067	0.028	-2.385	0.017
N_b		-0.0348	0.018	-1.964	0.05
$Accel$		-0.0842	0.018	-4.806	0.000
D_{SL}	300m	0.0538	0.072	0.743	0.458
	250m	0.0394	0.07	0.56	0.576
	200m	0.093	0.068	1.373	0.17
	150m	0.1141	0.067	1.698	0.09
	100m	0.1252	0.068	1.843	0.066
Sp_{diff}	25kmph	-0.3462	0.036	-9.722	0.000
	20kmph	-0.4063	0.033	-12.406	0.000
	15kmph	-0.2386	0.028	-8.403	0.000
	10kmph	-0.1687	0.026	-6.465	0.000
	5kmph	-0.0678	0.026	-2.625	0.009

Adjusted R-squared = 0.223

For best response

- Short Activation Distance (**b/w 150-200m**)
- Moderate Speed Difference (**b/w 10-20kmph**)

Deceleration

Average = 0.61m/s²

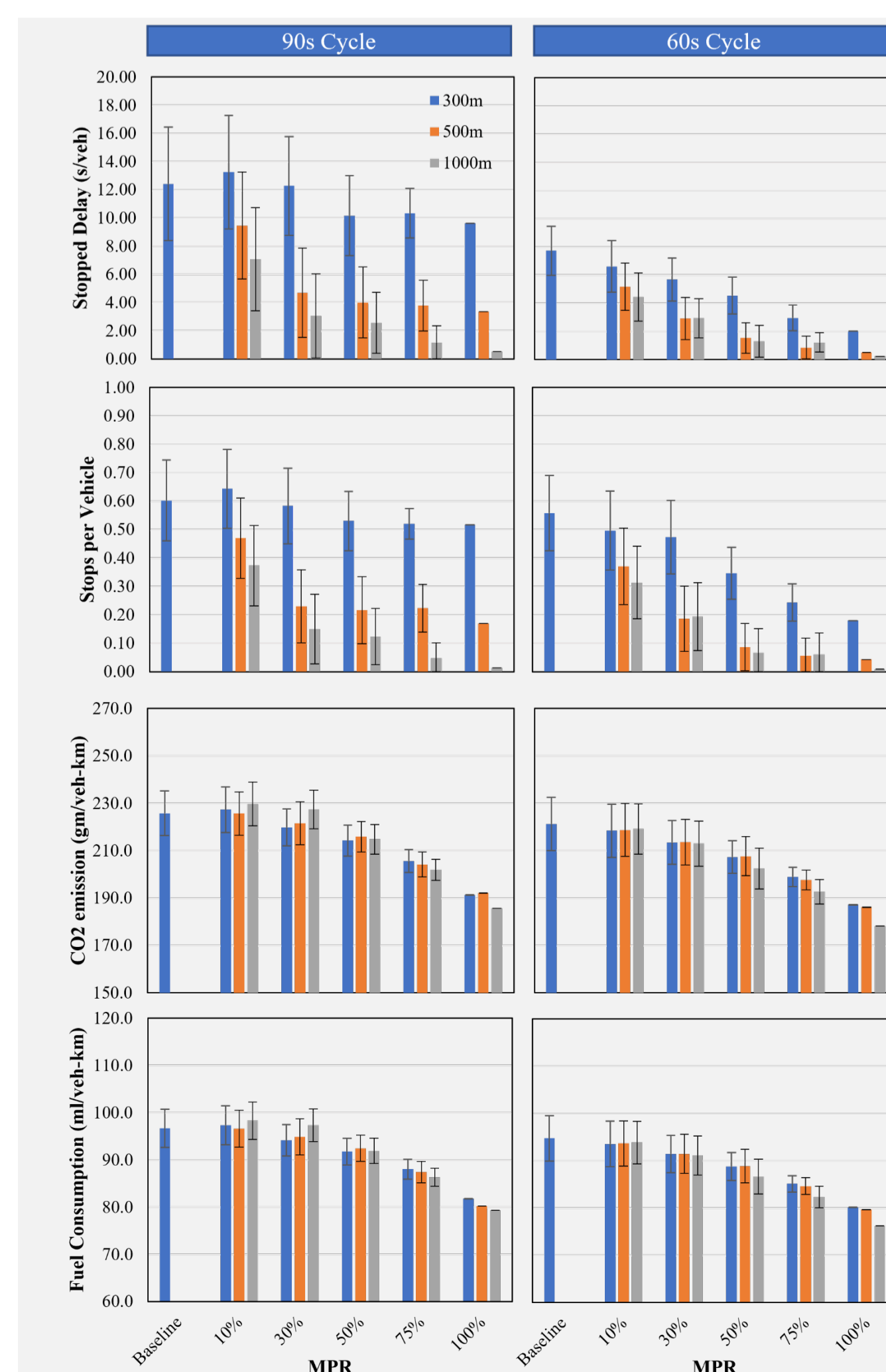
Variable	Coefficient	S.E.	t	P> t	
Intercept	0.4492	0.082	5.478	0.000	
t_{peak}		0.0506	0.032	1.586	0.113
Sp_{av}		0.0026	0.001	2.764	0.006
$Accel$		0.0424	0.018	2.365	0.018
D_{SL}	300m	-0.1832	0.074	-2.466	0.014
	250m	-0.1372	0.072	-1.9	0.058
	200m	-0.0462	0.069	-0.666	0.506
	150m	-0.0019	0.069	-0.027	0.978
	100m	0.0478	0.07	0.687	0.492
Sp_{diff}	25kmph	0.171	0.036	4.687	0.000
	20kmph	0.0186	0.034	0.554	0.58
	15kmph	0.0702	0.029	2.41	0.016
	10kmph	0.0541	0.027	2.023	0.043
	5kmph	0.0154	0.026	0.582	0.561

Adjusted R-squared = 0.087

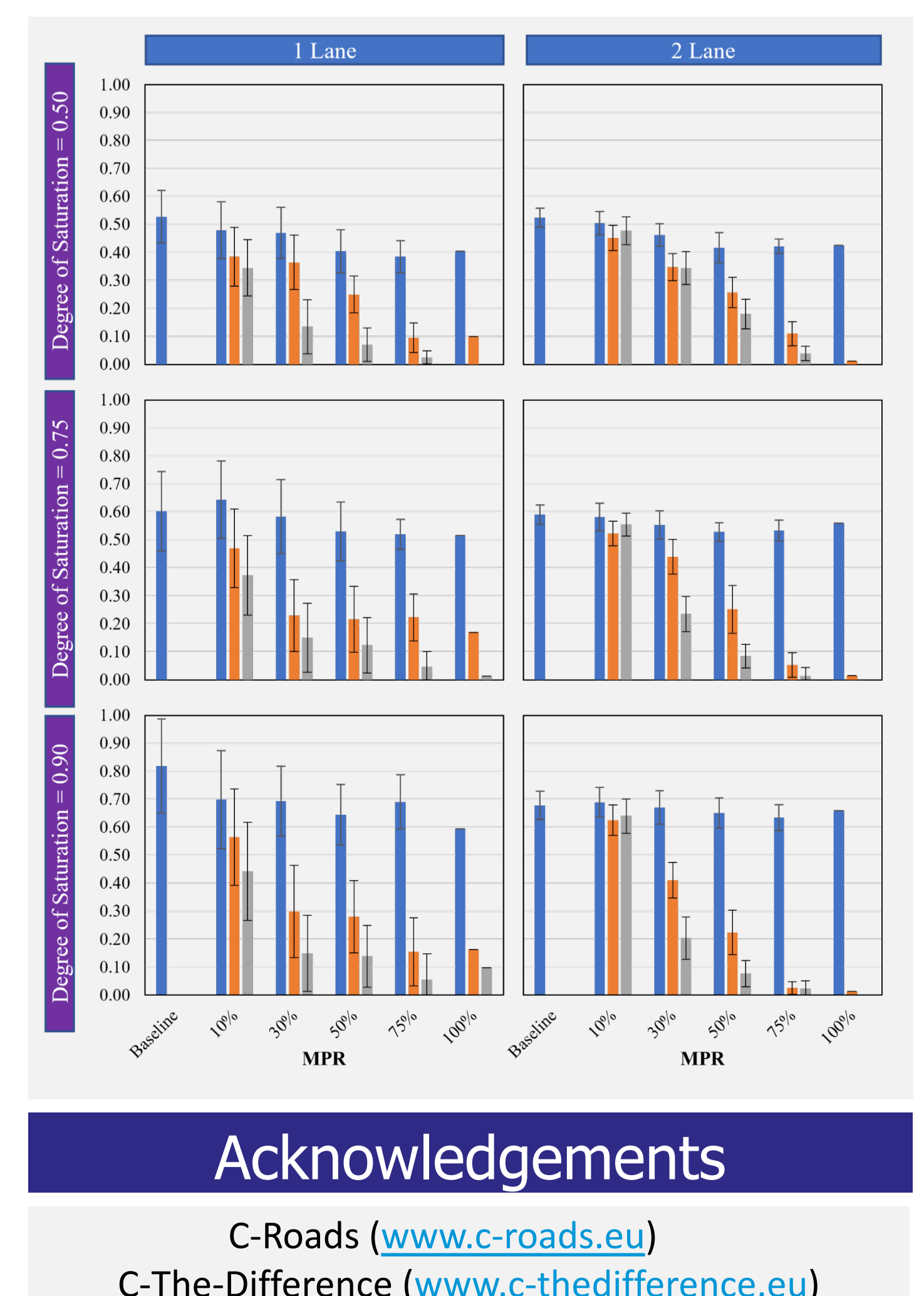
Data Pre-Processing

- GLOSA Advice = 'V' (with speed)
- Traj. Dur. >= 4s bef. first broadcast
- Traj. Dur. >= 10s b/w first & last broadcast
- Speed at first broadcast >= 20 kmph
- Upstream speed change < -3km/h
- Speed after slowdown operation >= 10 kmph

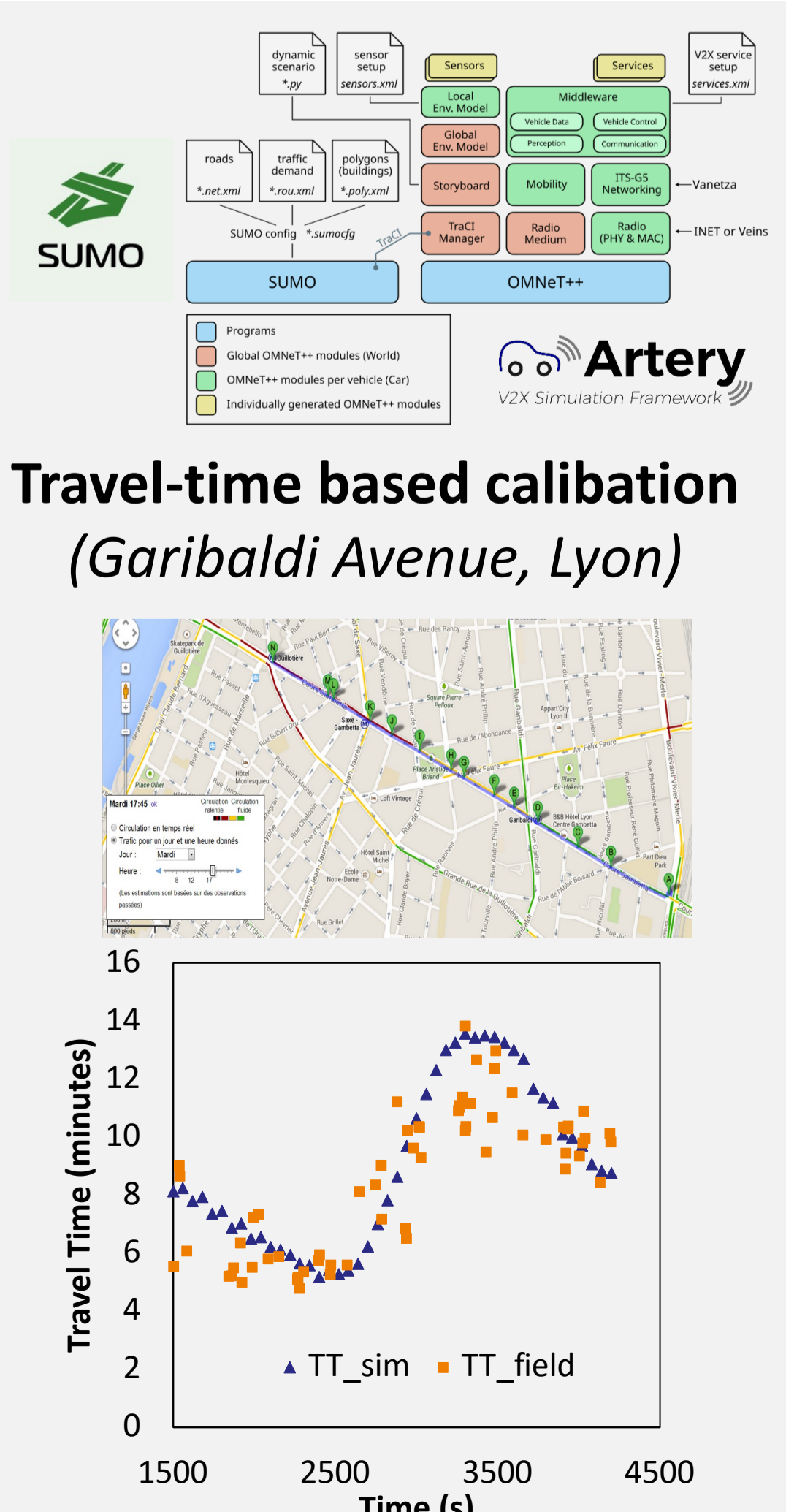
Impact of Cycle Length



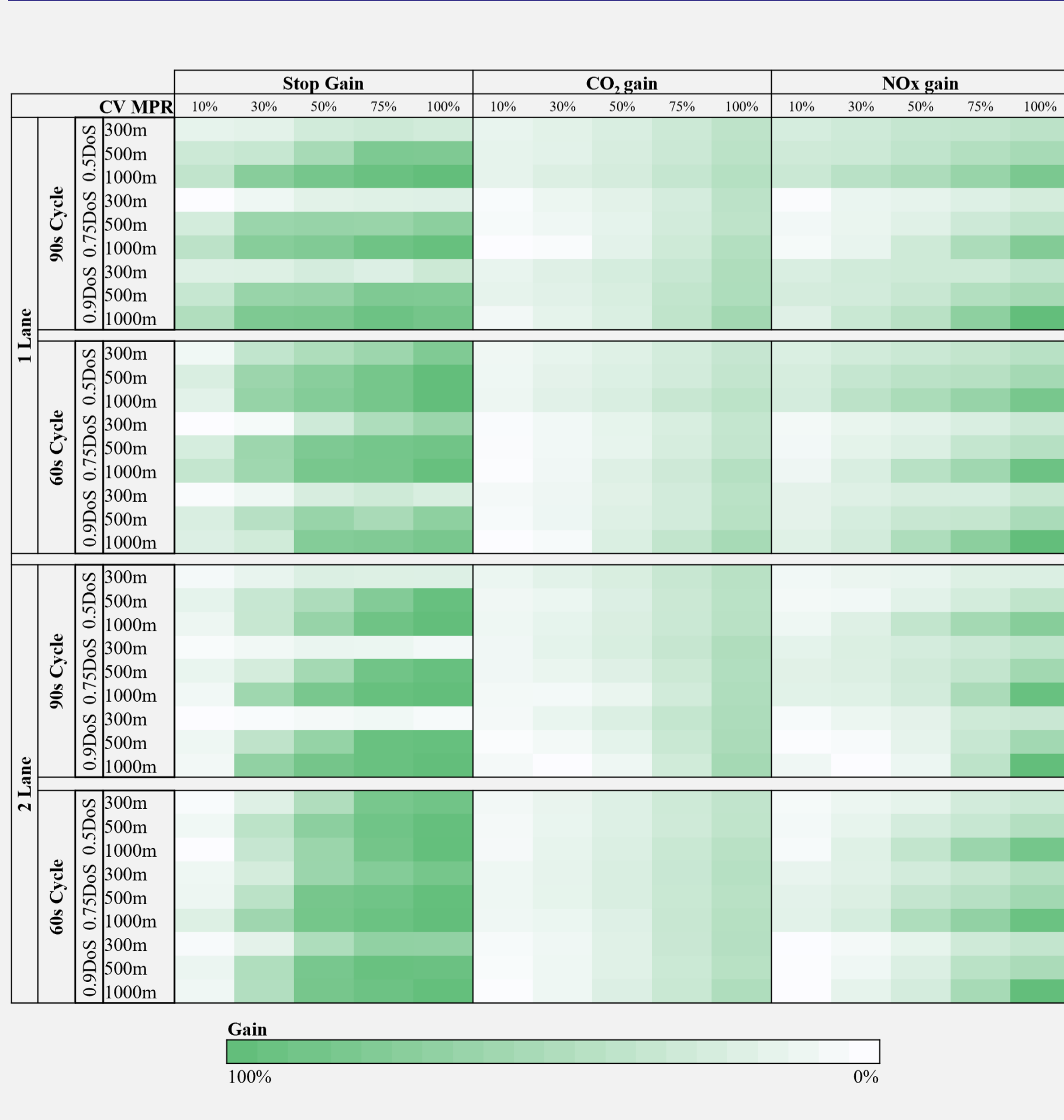
Impact of Lane Availability



ScalingUp



Overall Impact



Acknowledgements

C-Roads (www.c-roads.eu)
 C-The-Difference (www.c-the-difference.eu)