



HAL
open science

Open Science in the MSCA PF

Daphné Mathelier, Aurélie Gono

► **To cite this version:**

Daphné Mathelier, Aurélie Gono. Open Science in the MSCA PF. Doctoral. France. 2024. hal-04630552

HAL Id: hal-04630552

<https://hal.science/hal-04630552>

Submitted on 1 Jul 2024

HAL is a multi-disciplinary open access archive for the deposit and dissemination of scientific research documents, whether they are published or not. The documents may come from teaching and research institutions in France or abroad, or from public or private research centers.

L'archive ouverte pluridisciplinaire **HAL**, est destinée au dépôt et à la diffusion de documents scientifiques de niveau recherche, publiés ou non, émanant des établissements d'enseignement et de recherche français ou étrangers, des laboratoires publics ou privés.

Open Science in the MSCA PF

.....

Aurélie Gono (Open Science Officer, University Paris Nanterre)

Daphné Mathelier (Digital Humanities Engineer, MSH Mondes; contact point Huma-Num)

.....

Course of the presentation

1. Open Science
2. Open Access
3. Research Data
4. Useful resources and contacts

1. Open Science

Definition

*Open science is an **approach based on open cooperative work and systematic sharing of knowledge and tools** as early and widely as possible in the process. It has the potential to increase the quality and efficiency of research and accelerate the advancement of knowledge and innovation by sharing results, making them more reusable and improving their reproducibility. It entails the involvement of all relevant knowledge actors.*

Source: [HE – Programme guide](#)

Objectives

- Improve the dissemination and exploitation of research results
- Encourage cooperation between science and society
- Implement open science as a *modus operandi* of modern science



Horizon Europe (HORIZON)

HE Programme Guide

Open Science practices

Mandatory Open Science practices

- **Open access to scientific publications (and data)** under open licence
- **Responsible management of research data** in line with the FAIR principles, including the use of DMP and according the principle *“as open as possible, as closed as necessary”*
- **Information about the research outputs/tools/instruments** needed to validate the conclusions of scientific publications or to validate/re-use research data
- **Digital or physical access to the results** needed to validate the conclusions of scientific publications (unless exceptions apply)

Recommended Open Science practices

- Early and open sharing of research
- Open peer-review
- Involving all relevant knowledge actors, including citizens

Useful tips: [HE program guide](#) (p. 40-56) & [Annotated Grant Agreement](#) (p. 282-291)

Evaluation of Open Science practices

*The criteria for evaluating research proposals under Horizon Europe will take into account the **quality and appropriateness of the open science practices** in the submitted proposals. This will be assessed as part of the project's methodology, [mostly] under the excellence award criterion. This will provide a strong incentive for applicants and beneficiaries to practice open science.*

Source: [HE Factsheets OpenScience](#)

Indeed, open science practices are mostly evaluated under two criteria:

- **Excellence** (in particular under methodology)
- **Quality and efficiency of implementation** (capacity of the participant, supervisor and host laboratory)

→ Applicants will have to provide **concrete information** on how they plan to comply with the mandatory open science practices.

Excellence criterion – Methodology

→ How open science practices are implemented as an integral part of the methodology

Part B-1 – 1. Excellence – 1.2. Soundness of the proposed methodology

- Evaluation of the quality of open science practices and research data management
- Up to 1/2 page (for open science practices and research data management)

Describe how appropriate open science practices are implemented as an integral part of the proposed methodology. Show how the choice of practices and their implementation is adapted to the nature of your work in a way that will increase the chances of the project delivering on its objectives.

Applicants generating/collecting data or other research output (except publications) during the projet must explain how the data will be managed in line with the FAIR principles.

Source: [HE MSCA – Standard application form](#)

Excellence criterion – Methodology

→ Provide concrete information on how you plan to include open science in your project methodology, with a focus on:

- **Early and open sharing**

- Offer specific information of what type of early and open sharing is appropriate (if applicable) for your discipline and project (such as preprints or preregistration/ registration reports) and which platforms you plan to use.

- **Open access to scientific publication and data**

- Offer specific information on how you will meet the open access requirements: specify where you will publish your publications and which repository you will use for your data, and under which (open) licence.

- **Responsible research data management (RDM)**

- Explain how the data generated will be managed, using the data management plan (mandatory deliverable during the project) and the FAIR principles.

Excellence criterion – Professional experience

→ Demonstrate that you are already familiar with open science practices and RDM

Part B-1 – 1. Excellence – 1.4. Quality and appropriateness of the researcher’s professional experience, competences and skills

- Presentation of the applicant’s prior expertise in open science
- In connection with the CV (Part B2), list of achievements (publication, software, data, etc.) in line with open science and FAIR principles

Even before submitting your project, it is recommended to have already adopted some good practices in terms of open science:

- Have a unique researcher identifier (ORCID) to mention in your CV
- Wherever possible, submit publications to open access journals
- Deposit all your publications in trusted repositories (at least the preprint)
- Learn about some good practices such as data management plans and FAIR principles

Quality and efficiency of implementation criterion

→ How the project uses existing expertise in terms of open science

Part B-1 – 3. Quality and efficiency of implementation –

3.2. Quality and capacity of the host institutions and participating organisations

- Presentation of the host institution and partners prior expertise in open science
- Explain that you will have access to research/technical infrastructure and administrative infrastructure that will help you bring open science into your project
- Explain, for example, that you know who to turn to for support on data management or that you have already identified which data repository is used most often in the host institution

*Take advantage of this week in Nanterre to learn about ArScAn's Open Science practices!
And more widely within the MSH or the campus of Nanterre (ask Aurélie and Daphné :)*

Concretely, what to do in your project?

What?	How?	Mandatory/recommended
Early and open sharing of research	Preregistration, registered reports, preprints, crowd-sourcing etc.	Recommended
Research output management	Data management plan (DMP)	Mandatory
Measures to ensure reproducibility of research outputs	Information on outputs/tools/instruments and access to data/results for validation of publications	Mandatory
Open access to research outputs through deposition in trusted repositories	<ul style="list-style-type: none"> • Open access to publications • Open access to data • Open access to software, models, algorithms, workflows etc. 	<ul style="list-style-type: none"> • Mandatory for peer-reviewed publications • Mandatory for research data but with exceptions ('as open as possible...') • Recommended for other research outputs
Participation in open peer-review	Publishing in open peer-reviewed journals or platforms	Recommended
Involving all relevant knowledge actors	Involvement of citizens, civil society and end-users in co-creation of content	Recommended

Source: European Commission, [Open Science in Horizon Europe](#)

Huma-Num

Huma-Num is a research infrastructure of the Ministry of Higher Education and Research, implemented by the CNRS with the Campus Condorcet and Aix-Marseille university.



It implements a digital infrastructure enabling the humanities communities to develop, implement and preserve their research their data over the long term in a context of open science and data sharing.

Its range of services includes [ShareDocs](#): for data storage, [Nakala](#) for data sharing and [Kanboard](#) for project management

Huma-Num also hosts third-party services that it does not develop itself, but which it supports, such as [Heurist](#).

See [Huma-Num documentation](#) for more information (*or ask me!*)

Trusted repositories

*A repository is an **online archive, where researchers can deposit digital research outputs and provide (open) access to them.***

Source: [AGA – Annotated Grant Agreement](#)

Candidates, with the help of research support staff (us!), should check:

- Whether the repositories that they plan to deposit their data are trusted repositories
- Justify this accordingly in their DMP

They are NOT considered repositories (at all):

- Personal websites and databases, publisher websites
- Cloud storage services (Dropbox, Google drive, etc.)
- Social networks (Academia.edu, ResearchGate and similar platforms)

Which platform to use?

1. Use a disciplinary repository if there is one

→ For archaeological data:

- See this [list of trusted archeological repositories](#)
 - Example: [Data Station Archaeology](#)
- See also some proposals on [re3data](#) proposals.

2. Alternatively, use a institutional repository or open archives if possible:

→ For data: Huma-Num repository [Nakala](#)

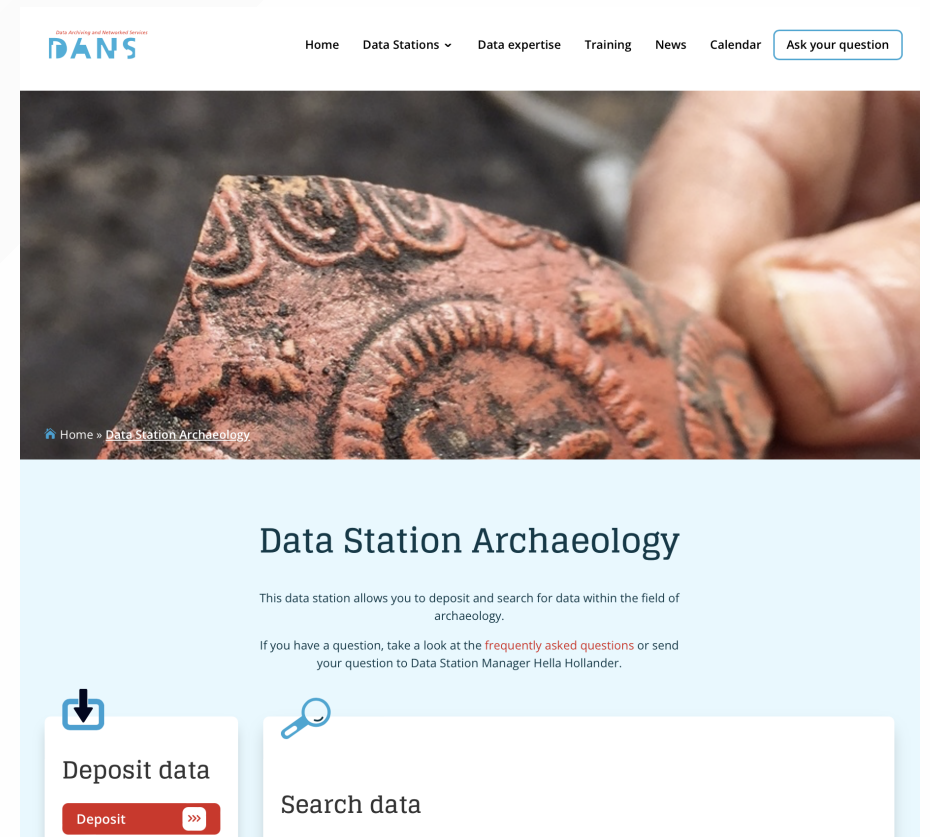
→ For publications: [ArScAn HAL collection](#)

3. Use catch-all repositories and open access publishing platforms:

→ For data: [Zenodo](#) maintained by the CERN

→ For publications: [Open Research Europe](#)

4. Search in a global registry, like [re3data](#) or [FAIRsharing](#), for a fitting repository.



Open licences

A license **specifies the conditions for distribution and reuse of any scientific content.**

An open licence means that you keep ownership of your work, but that others can use, share and remix it, without having to ask your permission.

The most commonly used open source licences are the [Creative Commons](#) (CC).

*Scientific publications must be licensed under the latest available version of a Creative Commons Attribution International Public Licence (**CC BY**) or an equivalent licence. For monographs and other long-text formats the licence may exclude commercial uses and derivative works (as in **CC BY-NC**, **CC BY-ND** or **CC BY-NC-ND** or equivalent licences).*

Source: [AGA – Annotated Grant Agreement](#)

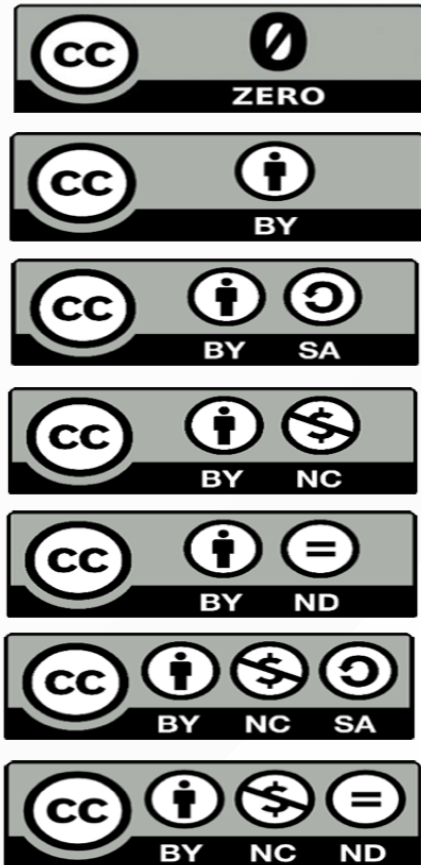


MOST OPEN

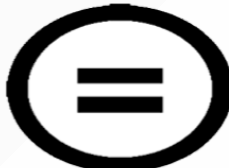


LEAST OPEN

Licenses



Icons



Terms of the Licenses

Public Domain Dedication (CC0)

This is considered a dedication to the public domain, and thus the creator(s) associated with this item have waived all their rights to the work worldwide under copyright law.

Attribution (BY)

Others can copy, distribute, display, perform and remix the work if they credit/cite the creator/author.

Derivative Works (ND)

Others can only copy, distribute, display or perform verbatim copies of the work. (No modifications allowed.)

Share Alike (SA)

Others can distribute the work only under a license identical to the one attached to the original work.

Non-Commercial (NC)

Others can copy, distribute, display, perform or remix the work but only for non-commercial purposes.

Metadata

Data providing information about data to make it findable, trackable and (re)usable. [...] Metadata can take many different forms, from free text to standardized, structured, machine-readable, extensible content. It is recommended to use a standard metadata format used in your field.

Source: [OpenAIRE](#)

Metadata must be:

- Open under a Creative Commons Public Domain Dedication (CC0) or equivalent
- In line with the FAIR principles
- A useful source of information: authors, title, date of publication, publication venue, Horizon Europe funding, grant project name, acronym and number, persistent identifiers

Persistent identifier

A persistent identifier is a **long-lasting reference to a digital resource**.

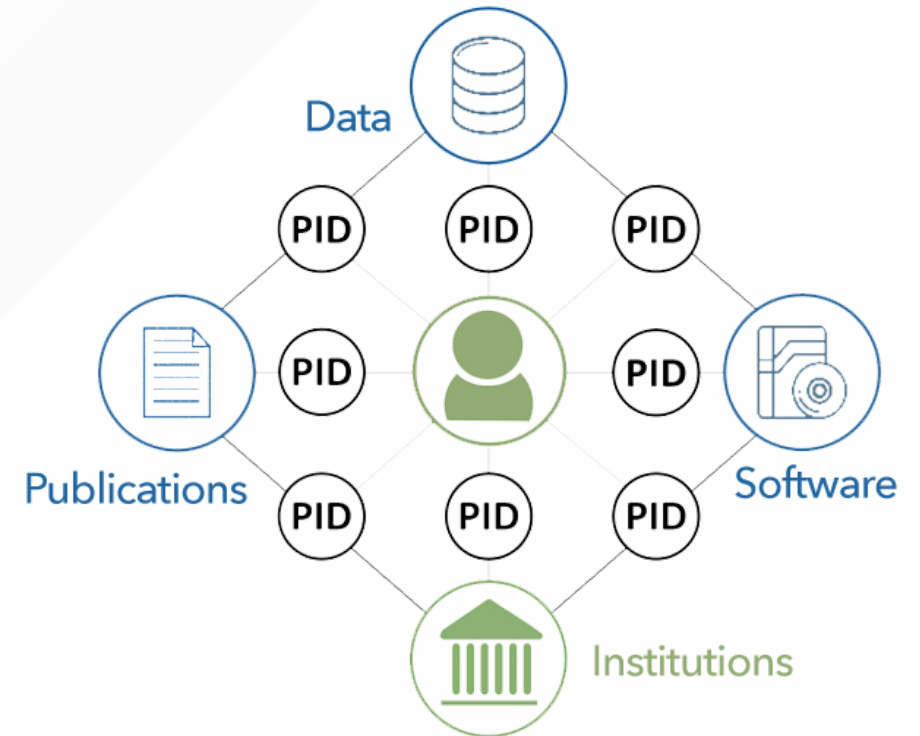
Persistent identifiers (PIDs) are key in ensuring the findability of research outputs, including data.

They are globally unique and long-lasting references to digital objects (such as data, publications and other research outputs) or non-digital objects such as researchers, research institutions, grants, etc.

Source : [HE programme guide](#)

Persistent identifiers must be provided for the data set, for all the author(s) involved in the action and, if possible, for their organizations and the grant.

Without a PID the data will not be findable and reusable in the long-run.



When to use PIDS?

Persistent identifiers (PIDs) such as a Digital Object Identifier (DOI) must be provided:

- For the peer-reviewed version of the publication in the first publishing venue (journal, book, publishing platform...)
- For the first version of a publication published in a preprint server or a repository
- For each data set

→ Hopefully, most publishing platforms and repositories automatically assign PIDs!

PIDs also have to be provided for:

- All author(s) involved in the action (such as [ORCID](#))
 - And, if possible, for their organisations (such as [ROR ID](#))
 - [See the example of the CNRS](#)
- The grant (such as grant DOIs)

Open Access

Definitions

Open access: *Online access to research outputs provided free of charge to the end-user.*

Research outputs: *Results to which access can be given in the form of scientific publications, data or other engineered results and processes such as software, algorithms, protocols, models, workflows and electronic notebooks.*

Source: [AGA – Annotated Grant Agreement](#)

In other words, open access means :

- Online access to research outputs
- A free availability on the public internet for the end-user
- No financial, legal, or technical barriers

Open Access Benefits



Source: Kingsley D. & Brown S., [Benefits of Open Access](#)

Requirements

Beneficiaries must ensure **open access to peer-reviewed scientific publications** relating to their results. This includes articles and long-text formats (monographs and other types of books).

Beneficiaries/authors must deposit their publication:

- Immediately in open access at the same time as the first publication
- In a machine-readable format (automatically read and processed by computers)
- In a trusted repository before or at publication time
- Using open licences:
 - For article: CC-BY
 - For monographs and other long-text formats: CC-BY. The licence may exclude commercial uses and derivative works (e.g. CC BY-NC, CC BY-ND)

Source: [AGA – Annotated Grant Agreement](#)

Author's retention of rights



Publishing in a non open access journal but under an open license.

Negotiate the addition of an article to your publishing contract when signing or retrospectively.

Example of addendum

Author retains:

- The rights to reproduce, to distribute, to publicly perform, and to publicly display the Article in any medium for non-commercial purposes;
- The right to prepare derivative works from the Article;
- The right to authorize others to make any non-commercial use of the Article so long as Author receives credit as author and the journal in which the Article has been published is cited as the source of first publication of the Article.

For example, Author may make and distribute copies in the course of teaching and research and may post the Article on personal or institutional Web sites and in other open-access digital repositories.

Source: [SPARC Author Addendum to Publication Agreement](#)

How to provide OA to publications?

Publishing in an OA journal

1. Find an open access journals: [DOAJ](#)
2. Check the compliance of your journal with the HE requirements: [Journal Checker Tool](#)

Keep in mind:

- Publication fees are only eligible when publishing in full OA journals (not hybrid).
- Even if you publish in an OA journal, you still have to deposit your publication in a trusted repository.
- HE requires that enough intellectual property rights are maintained by beneficiaries to ensure the required open access to scientific publications.

Source: [HE programme guide](#)

How to provide OA to publications?

Self-archiving in a trusted repository

The published article or the final peer-reviewed manuscript is archived by the researcher or a representative – in an online repository before, after or alongside its publication.

What can you deposit in a repository?

- Preprints = author's version before peer review
- Postprints = author's version after peer review
- Publications = PDF from publishers
- Unpublished documents

According to the authorizations defined by the publishers

Information on publishers' open access policies: [SHERPA RoMEO](#)

Self-archiving in a trusted repository: HAL

HAL portals examples:

- [Paris Nanterre University](#)
- [ArScAn laboratory](#)

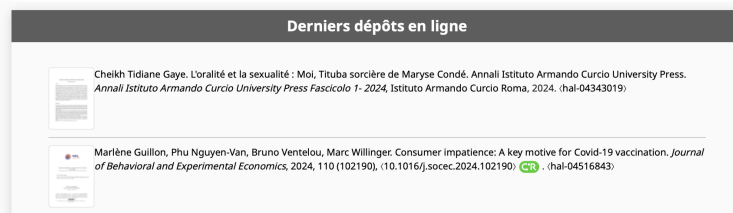


Bienvenue sur le portail HAL de l'Université Paris Nanterre

Le portail HAL Paris Nanterre est une **archive ouverte** destinée au **dépôt** et à la **consultation des travaux de recherche** (articles, ouvrages, chapitres d'ouvrages, actes de colloques, rapports...) des membres de l'Université Paris Nanterre. Ce portail est partie intégrante de la plateforme nationale HAL, ainsi que de la plateforme disciplinaire HAL-SHS.

Dans la lignée d'un mouvement international en faveur de la science ouverte, ce portail vise à :

- Faciliter l'**accès** du plus grand nombre à la production scientifique de l'université, y compris à des documents non publiés (pré-publications, documents de travail, communications)
- Accroître la **visibilité** des travaux des chercheurs, ses de l'établissement, grâce à un référencement de qualité
- Assurer la **conservation pérenne** des documents et données déposés et une accessibilité à long terme
- **Valoriser** la production scientifique des laboratoires et chercheurs et chercheuses, grâce à aux collections et au CVHAL
- Répondre aux exigences du **Plan national pour la science ouverte** et du **Plan S**.



Science ouverte à l'Université de Nanterre

- <https://science-ouverte.parisnanterre.fr/>

Types de documents

Documents en texte intégral

19 090

Collection HAL de l'unité de recherche Archéologies et Sciences de l'Antiquité

(ArScAn - UMR7041)

La diversité des domaines de recherche et des approches développés dans l'UMR7041 Archéologies et Sciences de l'Antiquité-ArScAn se retrouve dans ses publications et communications.

ArScAn couvre un large spectre disciplinaire en SHS autour de l'étude des sociétés et cultures du passé, de la **Préhistoire** à la **période moderne**, avec une forte implication sur le **Proche et Moyen Orient ancien**, l'**Antiquité classique** et le **Moyen-Age**.

Son périmètre géographique s'étend de la **Chine** à l'**Europe du Nord-Ouest**, autour du **bassin méditerranéen** et avec des foyers d'étude en **Amérique du Sud**, en **Afrique du Sud** et en **Polynésie**.

Les membres du laboratoire interviennent sur les **5 continents**, sur la base de travaux de terrain, de l'étude de textes et d'images. Les recherches se développent en **archéologie** et **histoire de l'art**, **histoire et épigraphie**, **philologie** et **littérature**, ainsi que dans le domaine des **humanités numériques** (production et traitement de données, méthodologies, pratiques). La **culture matérielle** et l'**histoire des techniques et des sciences**, notamment l'épistémologie de l'archéologie, sont des champs d'étude importants. Les recherches archéologiques incluent la **géo-archéologie**, le **paléo-environnement**, l'**anthropologie funéraire**.

Dans le territoire métropolitain, les opérations portent notamment sur le développement d'une **archéogéographie**, la **paléocologie** des approches techno-culturelles au Paléolithique, le traitement de données nouvelles en Gaule septentrionale de l'Antiquité à la France des Temps modernes. Au niveau international, l'UMR est fortement mobilisée sur le monde classique, les domaines asiatiques (du Proche et Moyen Orient, aux confins de la Chine et de l'Asie centrale, du Paléolithique ancien aux développements mésopotamiens et aux périodes plus récentes) et africains (l'Afrique du Nord et, pour l'Afrique de l'Ouest, essentiellement sur les périodes très anciennes et les périodes récentes et post-), mais aussi américains (Chili et Brésil) et océaniques (Mélanésie, Polynésie). Nous travaillons sur les sources écrites et iconographiques du Proche-Orient et des mondes grec, étrusque et romain, sur le pourtour de la Méditerranée, en Europe, en Afrique du Nord, en Egypte.

ArScAn relève de deux instituts (InSHS et INEE) et a six tutelles : CNRS, Paris 1 Panthéon-Sorbonne, Université Paris Nanterre, Université Paris8 Vincennes Saint-Denis, le ministère de la Culture et l'Institut national de recherches archéologiques préventives-Inrap.

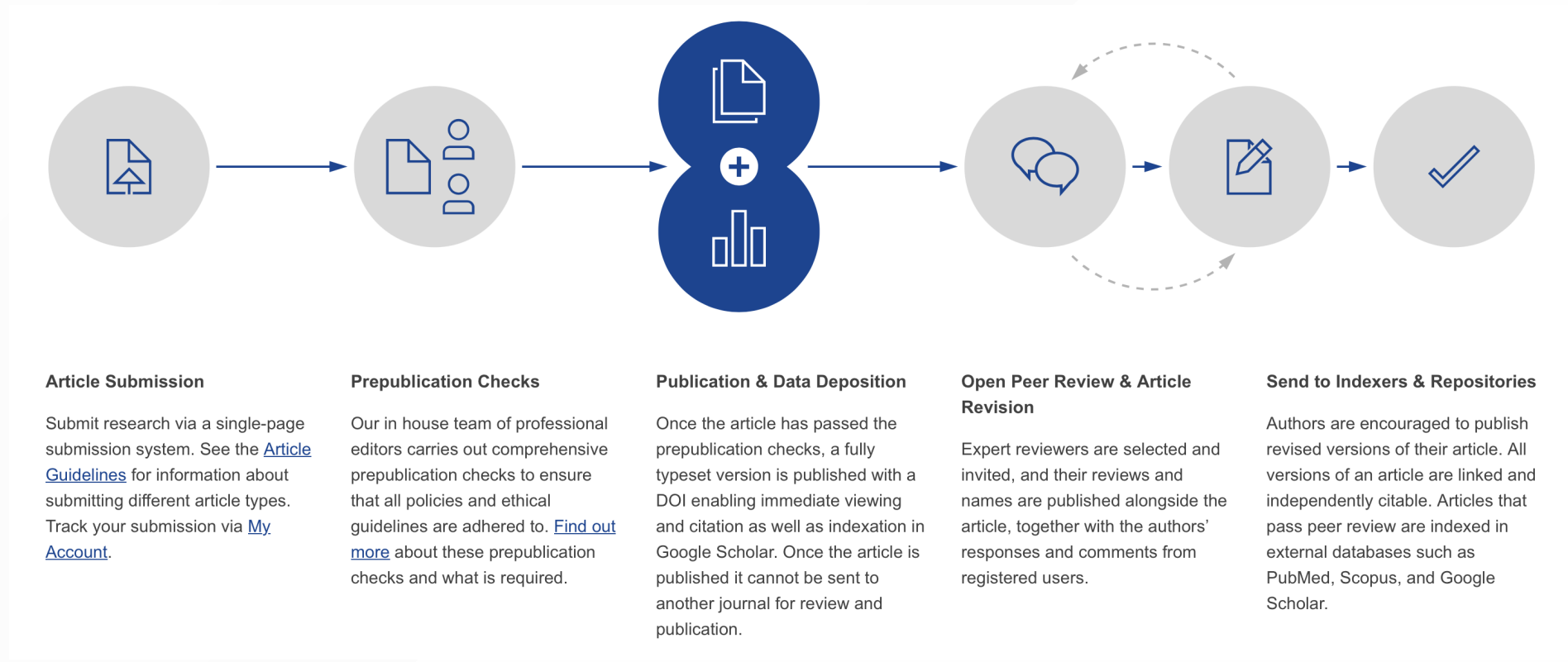
Site web ArScAn : www.arscan.fr

Autres ressources en ligne :

La bibliographie d'ArScAn pour la période 2012-2017 (pdf)

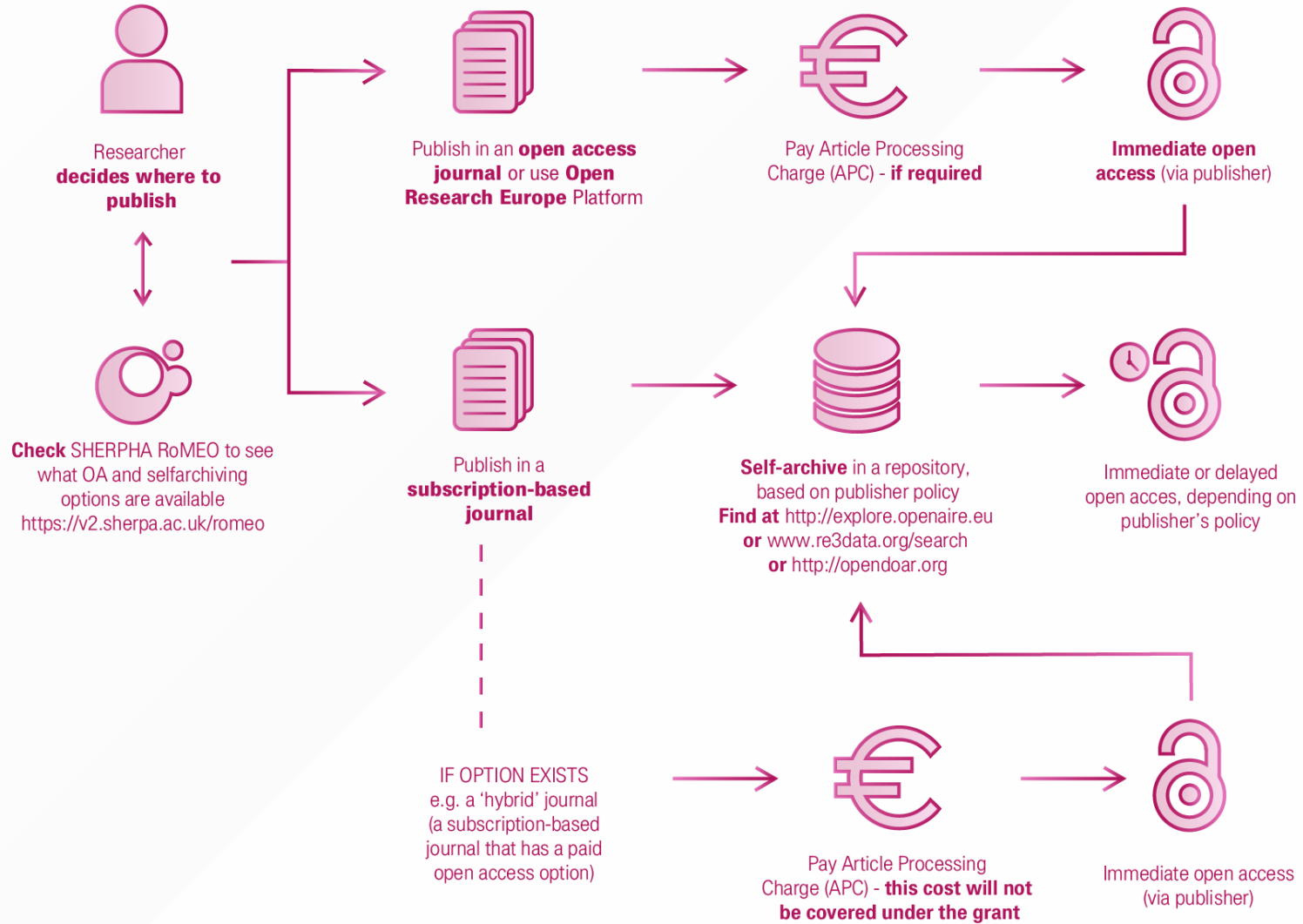
How to provide OA to publications?

Publishing in Open research Europe



Source: [ORE website](#)

Horizon Europe Open Access Mandate



Research Data

Research data is any information that has been collected, observed, generated or created to validate original research findings. Source: [FOSTER](#)

Expectations of the European Commission

1. Manage your data well (according to FAIR principles).
2. Write a Data Management Plan (DMP) and regular updates.
3. Deposit your data in a trusted repository as soon as possible.
4. Ensure open access to the data as much as possible.

Tips and resources

- Document your data as you go along.
- Discuss with ArScAn members about the collective practices.
- Identify and asks the team research support (*like us!*).

Open Research Data

Open research data is data that can be freely accessed, reused, remixed and redistributed, for academic research and teaching purposes and beyond. Source: [FOSTER](#)

Open data requires that the data be:

- Legally open: that is, available under an open (data) license that permits anyone freely to access, reuse and redistribute.
- Technically open: that is, that the data be available for no more than the cost of reproduction and in machine-readable form.

*Open access to research data and other research outputs should be addressed in the section on research data management of your proposal. Research data should be **open as a default**, unless there are legitimate reasons for keeping them closed.*

Source: [HE programme guide](#)

Research data management (RDM)

Process within the research lifecycle that includes the data collection or acquisition, organisation, curation, storage, (long-term) preservation, security, quality assurance, allocation of persistent identifiers (PIDs), provision of metadata in line with disciplinary requirements, licencing, and rules and procedures for sharing of data.

Source: [HE programme guide](#)

Why manage your data? During and after the research, good RDM will:

- Make the work more efficient and properly safeguard the data.
- Increase the impact and value of the data.
- Make good use of European public funding.

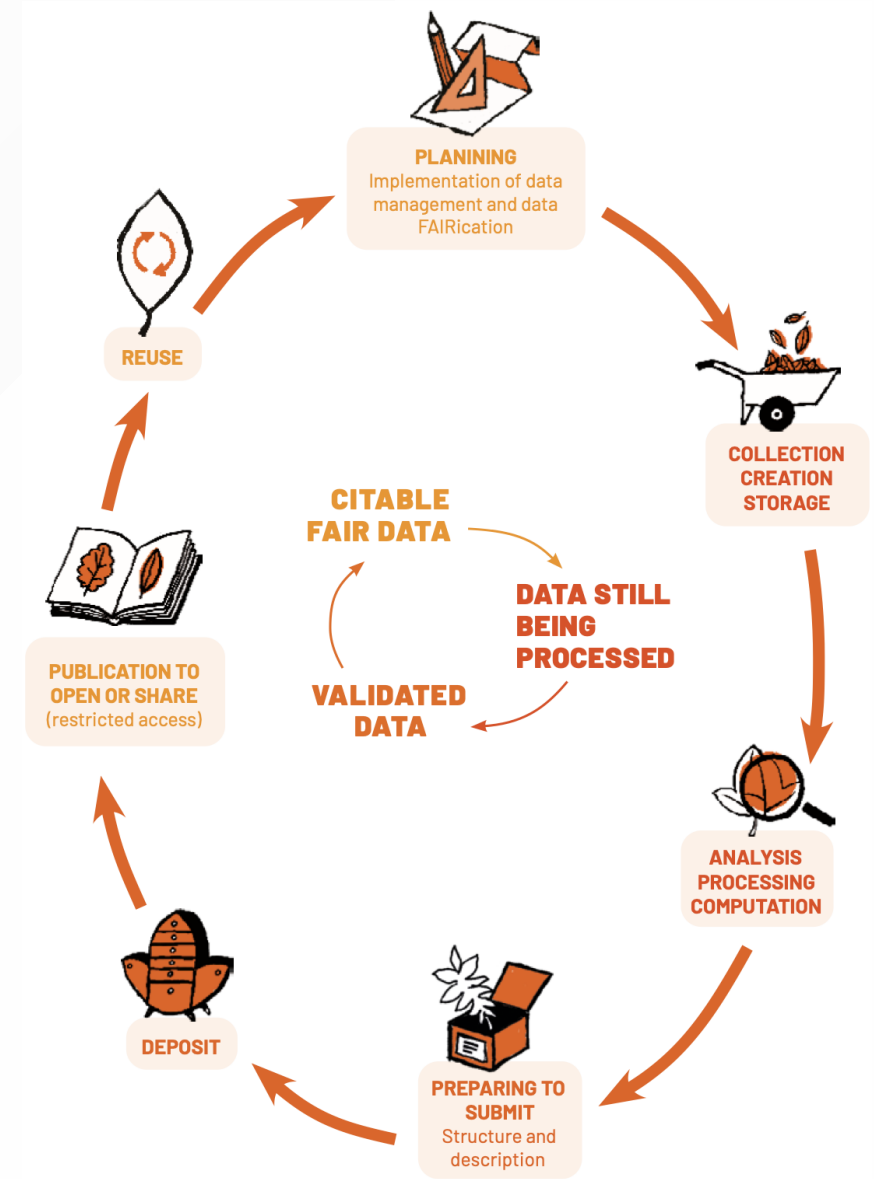
RDM is **mandatory** in HE for projects generating or reusing data. Applicants must explain how the data will be managed in line with the FAIR principles.

Key steps of RDM

1. Planning
2. Collection, creation, storage
3. Analysis, processing, computation
4. Preparation of submission
5. Deposit
6. Publication to open or or share
7. Reuse

Source: [Ouvrir la science](#)

At each step of the cycle, data management actions need to be undertaken (*see next slide*).



KEY STEPS FOR MAKING RESEARCH DATA OPEN

BEGINNING OF A RESEARCH PROJECT



PLANNING
Implementation of a data management plan and data FAIRfication

Think about the following key questions: what type(s) of data will you produce? What volume of data? How will you describe them? Process them? Analyse them? Share them? Store them? Is there a specific legislative framework for the dissemination protocol?



COLLECTION CREATION STORAGE

Ask yourself whether it is necessary to produce new data and consider the possibility to reuse previous research.

Prioritise open source software and open formats for better compatibility between tools.
Read up on the procedures for storing the data, security protocols, access rights and data recovery in the event of an incident.



DOCUMENTATION
Do an inventory of the preexisting data used and the new data collected. Describe them using scientific metadata: creation date, provenance, collection method or protocol. Use the controlled vocabulary of your academic community, specify the type and format.

Think about the need to process the data and the environmental and social impact of your research.



ANALYSIS PROCESSING COMPUTATION

Think about the need to process the data and the environmental and social impact of your research.



ARCHIVING
All documents are intended to be kept permanently or to be destroyed when they have no further administrative value. Beyond the life of the project, some data are stored for a very long time. Ask for more information from the archive department at your institute.



PREPARING TO SUBMIT
Structure and description

Sort your data, selecting which ones need to be submitted and published. Make sure your chosen repository is trustworthy. Prepare the data files, indicate the documentary metadata: contributors, establishment, etc., associated files, and the README file that describes them.

CITABLE FAIR DATA

DATA STILL BEING PROCESSED

VALIDATED DATA



REUSE

Find data in various catalogues and repositories. Check the conditions for reusing data, set out in the user licence. Cite the data using its persistent identifier.



PUBLICATION TO OPEN UP OR SHARE (restricted access)

Remember to link data to associated publications and vice versa thanks to their persistent identifiers.



DEPOSIT

Deposit files. Define reuse rights (licence) and data access rights: open or restricted access. Update data set versions.

FAIR principles – What the data should be

- **Findable**
 - Easy to find for both humans and computers
 - Referenced with unique and persistent identifiers (DOI, ORCID)
- **Accessible**
 - Archived in long-term storage (ideally a trusted repository)
 - Provided using standard technical procedures
- **Interoperable**
 - Exchanged and used across different applications and systems
 - Using metadata standards, standard ontologies, and controlled vocabularies
- **Reusable**
 - Licensed with a detailed provenance
 - Supplemented by additional documentation describing the acquisition of the data

Source: [How to FAIR](#)

FAIR principles: Keep in mind

- Both humans and machines are expected to digest data.
- FAIR principles apply to both data and metadata.
- Principles are not necessarily about open data.
- Principles are not rules or standards (but work routines).

Steps toward FAIRer data

- Persistent identifier (for the data, author(s), organizations, grants...)
- Rich metadata (machine-actionable, standardised and providing useful information)
- Clearly identified licences (Creative Commons or equivalent)
- Repository (trusted, general-purpose or institutional)
- Data Management Plan (DMP) => *see the following slide*

To go further: [AGA – Annotated Grant Agreement](#)

Data Management Plan (DMP)

*A DMP is a **document that outlines from the start of the project the main aspects of the lifecycle of research outputs, notably including data.** This includes their provenance, organisation and curation, as well as adequate provisions for their access, preservation, sharing, and eventual removal, both during and after a project.*

Writing a DMP is an activity directly linked to the methodology of the research.

Source: [AGA – Annotated Grant Agreement](#)

Beneficiaries must establish and regularly update a DMP for generated or collected data:

1. Within the first 6 months (initial version)
2. At mid-term (intermediate version)
3. At the end of the project (complete final version)

Data Management Plan

Common aspects that need to be addressed in all DMPs include:

- **Data set description:** Detailed description of the data
- **Standards and metadata:** Norms used to structure data so that other scientists can evaluate and replicate them
- **Name and persistent identifier:** Unique and persistent data identification and stable link to access data
- **Curation and preservation methodology:** Actions to ensure data integrity and preservation during and after the project
- **Data sharing methodology:** Information on how the data sets can be accessed and on any restrictions that may apply
- **Output management:** Efforts to manage results in accordance with FAIR principles
- Estimation of **costs and personnel related to RDM**

Horizon Europe DMP template

1. Data summary
2. FAIR data
 1. Making data findable, including provisions for metadata
 2. Making data accessible
 3. Making data interoperable
 4. Increase data re-use
3. Other research outputs
4. Allocation of resources
5. Data security
6. Ethics
7. Other issues

Source: [Data management plan template \(HE\)](#)



Horizon Europe

Data Management Plan Template

Version 1.0
05 May 2021

Concretely, how to open your data?

- Describes data with metadata standards used by your research community
- Deposit data in a trusted repository
 - As soon as possible
 - After data production and at the latest by the end of the project
 - By following the terms of the DMP
- Ensure open access under open licences
 - Following the principle “*as open as possible, as closed as necessary*”
- Provide information about any research output needed to re-use or validate the data

Data linked to a scientific publication should be:

- Deposited at the latest at the time of publication
- Deposited in line with standard community practices

BONUS – Heurist, a recommended database tool

→ open source software for creating a relational database

- Accessible to resourceful researchers
- No installation or programming
- Access via web browser
- Hosted on Huma-Num servers

Example: Valérie Schram's database:

[Ergaleion](#)

See the [official tutorials](#) on the Heurist website

ERGALEION

Ergaleion – Outil de lexicographie papyrologique de la vie matérielle

cnrs

Le projet MOTS OCCURENCES CONTEXTES RÉALITÉS Aide Structure Équipe Actualités

Ergaleion – Outil de lexicographie papyrologique de la vie matérielle

<https://heurist.huma-num.fr/Ergaleion/web>

Base multilingue conçue pour l'étude du lexique relatif à la vie matérielle en Égypte de l'époque perse jusqu'au début de l'époque arabo-musulmane d'après les sources papyrologiques, Ergaleion est un outil qui vise à reconnecter les mots aux réalités qu'ils désignent. À défaut, il a pour objectif de faciliter l'analyse et la définition du vocabulaire des *realia* par la mise en relation des mots et des contextes textuels dans lesquels ils sont attestés d'une part, ainsi que par la confrontation avec les vestiges archéologiques de réalités anciennes d'autre part.

L'outil et le site web associé ont été conçus grâce au logiciel [Heurist](#) dans le cadre du programme scientifique de l'Ifao "Realia d'Égypte de l'époque matérielle aux débuts de l'islam, mots et mobiliers" et financé grâce au soutien du CNRS – UMR 7041 ArScAn (HAROC), de l'Institut français d'archéologie orientale du Caire et du Collège de France.

ARSCAN UMR 7041

Archéologies et Sciences de l'Égypte

INSTITUT FRANÇAIS D'ARCHÉOLOGIE ORIENTALE

Useful resources and contacts

HE Reference documents

See the HE official documents on the [website](#) of the European Commission.

- Work programme & call documents > 2023-2024 > HE Main Work Programme 2023-2024
 - [2. Marie Skłodowska-Curie Actions](#)
 - [13. General Annexes](#)
- Grant agreements and contracts: [HE Unit MGA – Model Grant Agreement](#)
- Guidance
 - [HE Programme Guide](#)
 - [Online Manual Guide](#)
 - [AGA – Annotated Grant Agreement](#)
- Templates & forms
 - Application forms: [Standard application form \(HE MSCA PF\)](#).
 - Evaluation forms: [Standard evaluation form \(HE MSCA PF\)](#).
 - Project reporting templates: [Data management plan template \(HE\)](#).

Tools and services

Publications and data

- Principles FAIR: [FAIRsharing](#), [GO FAIR](#), [How to FAIR](#)
- Licences: [Creative commons](#), [ODbL](#), [rights statements](#)
- [Persistent identifiers](#): researchers ([ORCID](#)), publications and data set ([DOI](#), [ARK](#), [Handle](#)), organizations ([ROR](#))
- Standards of description (metadata): [Dublin Core](#) (DC), [DDI](#) , [EAD](#) , [METS](#)
- Vocabularies: [Pactols](#), [DARIAH Backbone Thesaurus](#)

Publications

- Repositories: [HAL](#), [SocArXiv](#), [Preprints](#), [Zenodo](#)
- Trustworthy tools: [DOAJ](#), [DOAB](#), [Journal Checker Tool](#), [Sherpa Romeo](#)
- Open Access publishing platform: [ORE](#) , [OpenEdition Books](#), [OpenEdition Journals](#), [Open Library of Humanities](#)

Research data

- Directories: [OpenDOAR](#), [re3data](#)
- Repositories: [Figshare](#), [Nakala](#), [Zenodo](#)
- Data storage: [ShareDocs](#), [MyCore](#)
- DMP writing tool: [Argos](#), [DMPOnline](#), [DMP Opidor](#), [DMPtool](#)
- DMP templates: [Horizon Europe](#), [MASA](#), [Science Europe](#)

Online ressources

- 4EU+ Alliance, [Open for you! An introduction series to open science](#)
- European Commission
 - [Boîte à outils – Actions Marie Skłodowska-Curie](#)
 - [Horizon Europe, Fact sheets OpenScience](#)
 - [Horizon Europe, open science. Early knowledge and data sharing, and open collaboration](#)
 - [The EU's open science policy](#)
 - [What the European Open Science Cloud is](#)
- Foster OpenScience : [Courses](#) and [Open Science Training Handbook](#)
- MSCA-Net project
 - Handbook : https://msca-net.eu/wp-content/uploads/2022/07/MSCA_PF_handbook_final.pdf
 - FAQ : [https://mariesklodowskacurieactions.blogspot.com/search/label/Postdoctoral Fellowships](https://mariesklodowskacurieactions.blogspot.com/search/label/Postdoctoral+Fellowships)
- Ouvrir la science – Open Science Library
 - [Open Science – Research Data](#)
 - [Passport for Open Science](#)
- Science Europe, [Practical Guide to the International Alignment of Research Data Management](#)

Research support staff

MSH Mondes

[Organization chart](#)

[Training courses](#)

Services:

- Archeology and Antiquity Science Library – Arnaud Harfort: usr3225.bibarch@cnrs.fr
- MAPS Platform – Alexandra Pineau
 - Optical microscopy: alexandra.pineau@cnrs.fr
 - Electronical microscopy: archeoscopie.usr3225@services.cnrs.fr
 - 3D: jerome.louvet@cnrs.fr
- Archives – Aurélie Montagne-Bôrras: usr3225-archives@services.cnrs.fr
- Audiovisual & multimedia – Vanessa Tubiana: vanessa.tubiana-brun@cnrs.fr
- Research Data and Digital Humanities – Daphné Mathelier: daphne.mathelier@cnrs.fr



Paris Nanterre University

- Research Data Support: donnees-recherche@liste.parisnanterre.fr
- Valorisation and Support for Research (DRED)
 - International Relations: relations-internationales@liste.parisnanterre.fr
 - Open Science – Aurélie Gono: a.gono@parisnanterre.fr

Paris 1 Panthéon-Sorbonne

- Communication and International Relations: international-communication@univ-paris1.fr
- Library (SCD) – Support for research: appui-recherche-scd@univ-paris1.fr
- Valorisation and Support for Research (D2P): d2p@univ-paris1.fr
 - Ekaterina Smoliakova: ekaterina.smoliakova@univ-paris1.fr
 - Alexandra Torero Ibad: alexandra.torero-ibad@univ-paris1.fr

CNRS Regional Delegation (DR5)

- Communication: international-communication@univ-paris1.fr
- Valorisation and Support for Research – Jordan Ghanem: jordan.ghanem@cnrs.fr