



HAL
open science

Between controversy and plebiscite: is carrying capacity useful for decision support in MPAs? Recommendations resulting from a partnership approach

Eric Le Gentil, Frédérique Alban, Pascal Provost, Loury Cavalié, Diane Vaschalde, Alain Ponsero, Harold Levrel, Gilbert David, Ingrid Peuziat, Pierre Scemama

► To cite this version:

Eric Le Gentil, Frédérique Alban, Pascal Provost, Loury Cavalié, Diane Vaschalde, et al.. Between controversy and plebiscite: is carrying capacity useful for decision support in MPAs? Recommendations resulting from a partnership approach. Conférence OCEANEXT 2019, Université de Nantes, Jul 2019, Nantes, France. hal-04630111

HAL Id: hal-04630111

<https://hal.science/hal-04630111>

Submitted on 1 Jul 2024

HAL is a multi-disciplinary open access archive for the deposit and dissemination of scientific research documents, whether they are published or not. The documents may come from teaching and research institutions in France or abroad, or from public or private research centers.

L'archive ouverte pluridisciplinaire **HAL**, est destinée au dépôt et à la diffusion de documents scientifiques de niveau recherche, publiés ou non, émanant des établissements d'enseignement et de recherche français ou étrangers, des laboratoires publics ou privés.



Between controversy and plebiscite: is carrying capacity useful for decision support in MPAs?

Recommendations resulting from a partnership approach

OCEANEXT 2019

3, 4, 5 July 2019, Nantes

Eric Le Gentil, Frédérique Alban, Pascal Provost, Loury Cavalié, Diane Vaschalde, Alain Ponsero, Harold Levrel, Gilbert David, Ingrid Peuziat, Pierre Scemama



A collective thinking process about carrying capacity

→ Two main questions about carrying capacity (CC) for decision support in MPAs

- Normativity → controversy (social scientists)
- Feasibility → plebiscite (MPAs managers)

Growth of multi-objectives MPAs with new governance models

Researchers	Managers
1. Normativity	1. Normativity
2. Feasibility	2. Feasibility
3. Knowledge	3. Knowledge

A collective thinking process about carrying capacity

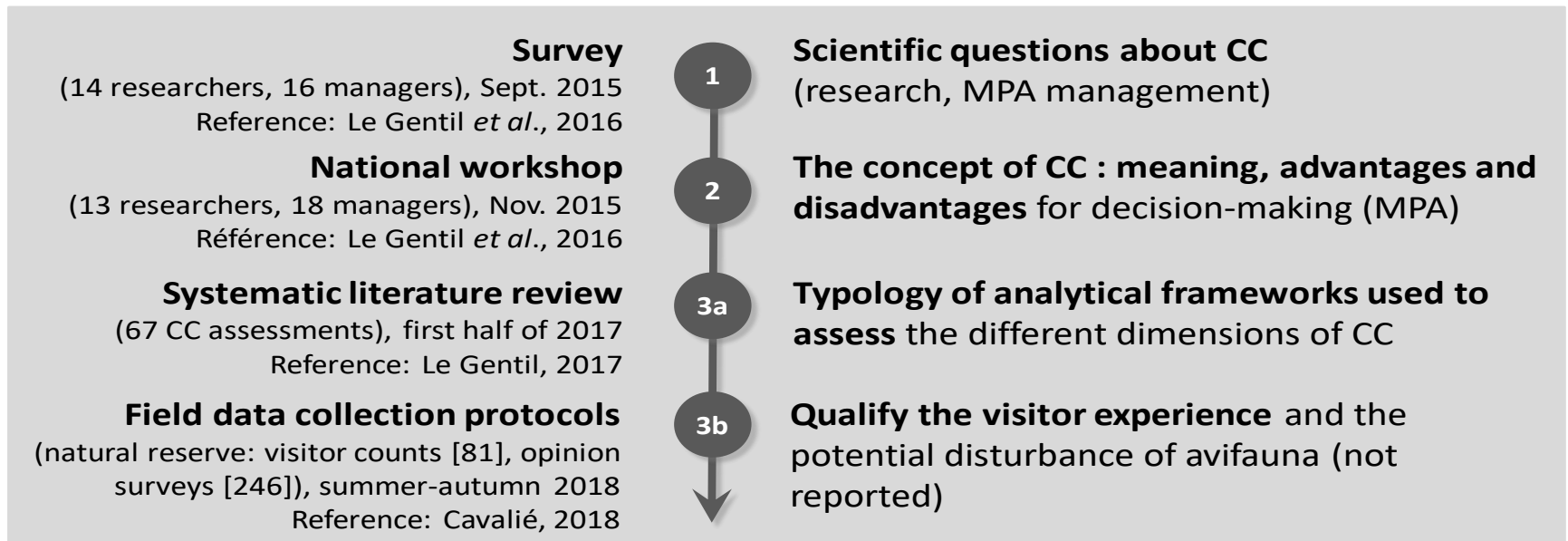
→ Two main questions about carrying capacity (CC) for decision support in MPAs

- Normativity → controversy (social scientists)
- Feasibility → plebiscite (MPAs managers)

Growth of multi-objectives MPAs with new governance models

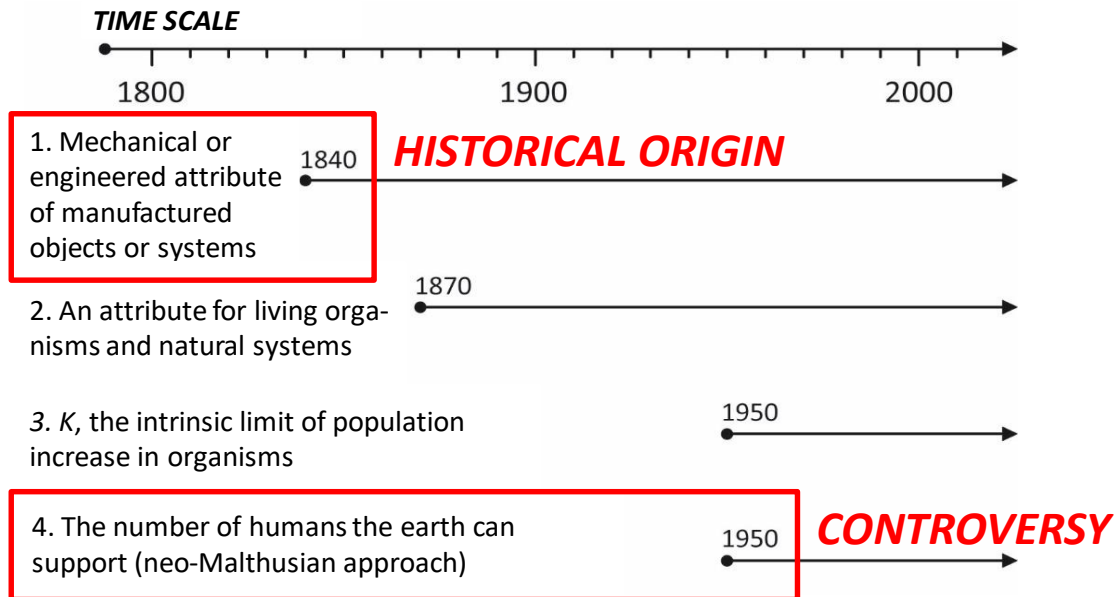
→ Execution of the partnership approach

Researchers	Managers
1. Normativity	1. Normativity
2. Feasibility	2. Feasibility
3. Knowledge	3. Knowledge



Meaning, advantages and disadvantages of CC

→ Genesis and history of CC

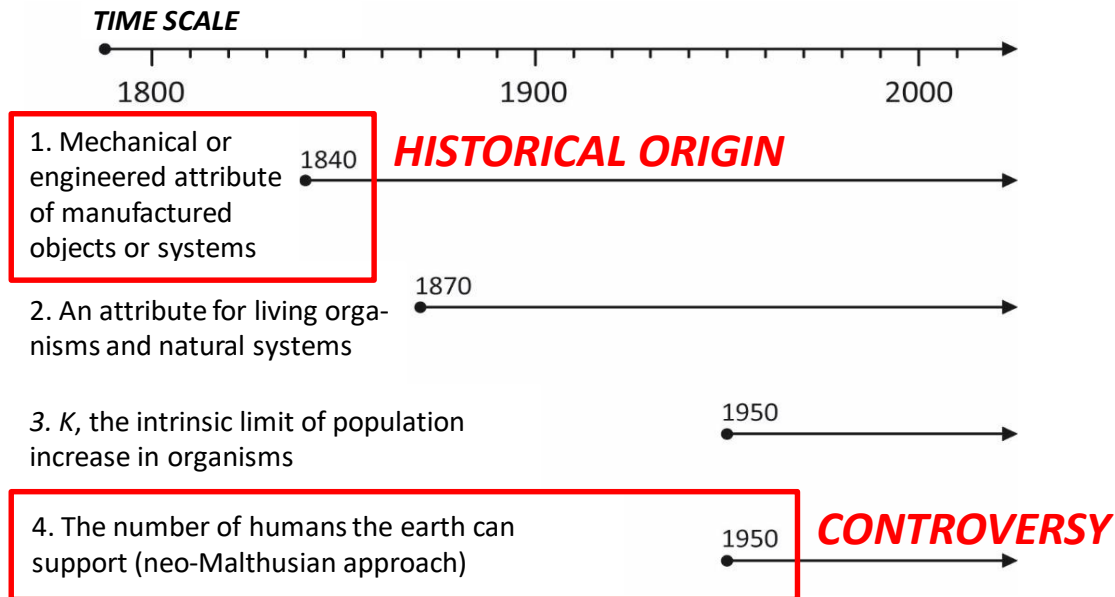


→ Actually, CC ...

- seeks to formalize the threshold effect
- refers to \neq dimensions
- is always a controversial concept

Meaning, advantages and disadvantages of CC

→ Genesis and history of CC



→ Actually, CC ...

- seeks to formalize the threshold effect
- refers to \neq dimensions
- is always a controversial concept

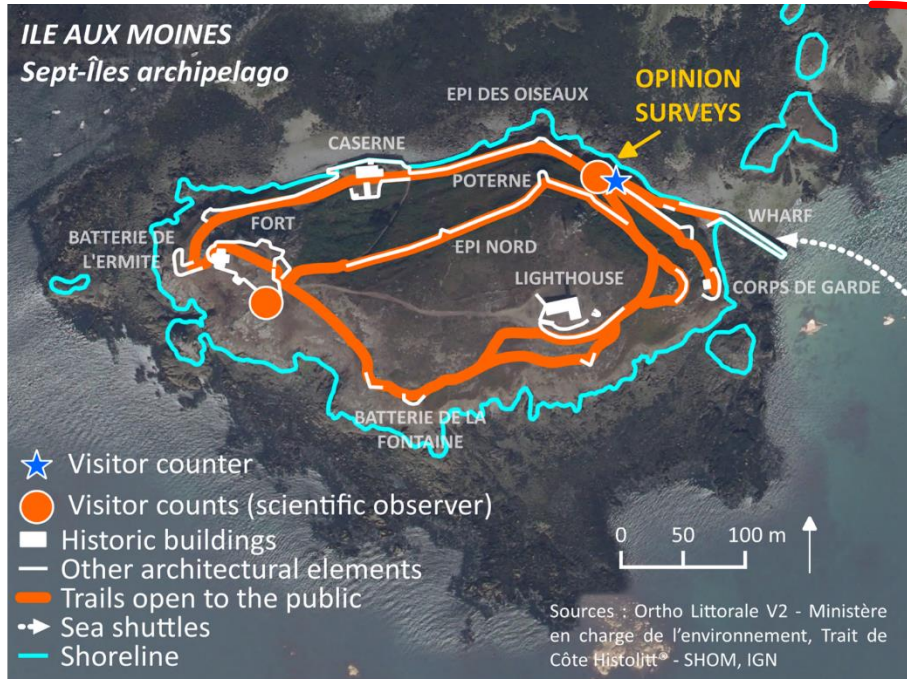
→ But also ...

- An intuitive concept
- It questions the notion of growth

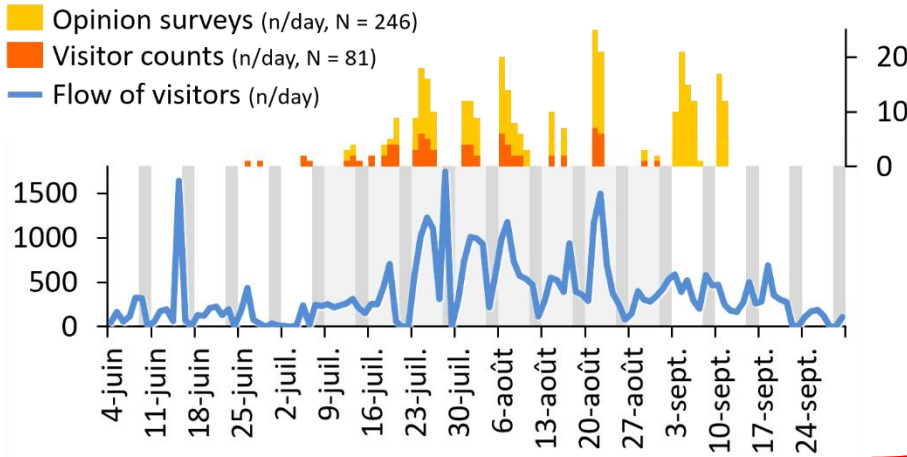
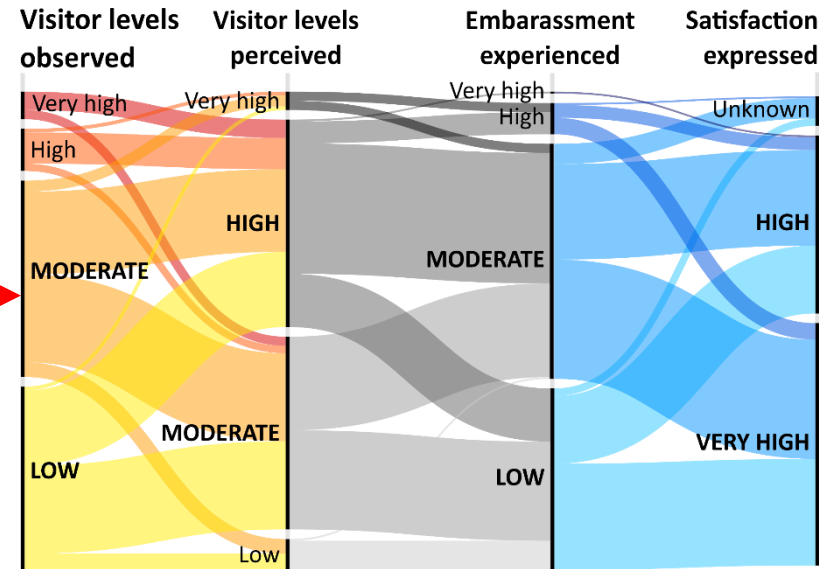
Useful for decision support?

Advantages	Disadvantages
● An integrative concept (research-management, SS-LSci)	● Several definitions, often unclear
● An intuitive concept	● Normative (<i>numerus clausus</i>)
● It questions the notion of growth and its consequences	● Often conceived as ideal, static, and numerical
● It questions nature conservation policies	● Hard to measure (thresholds or optimums)

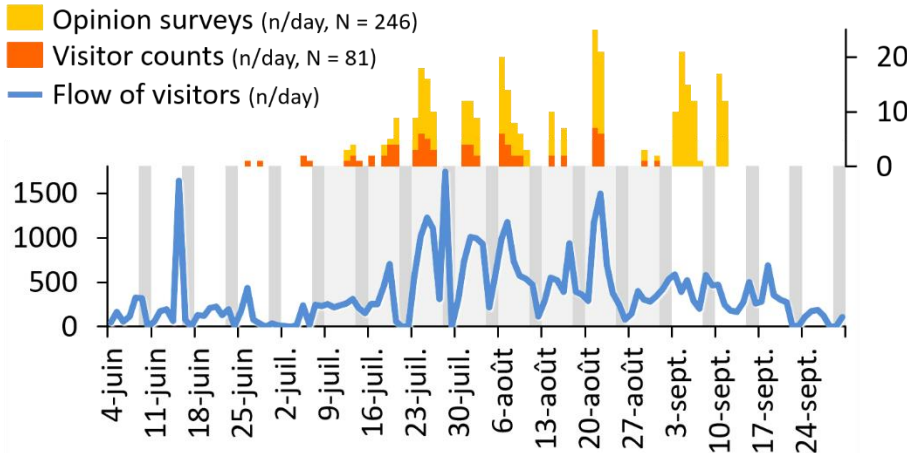
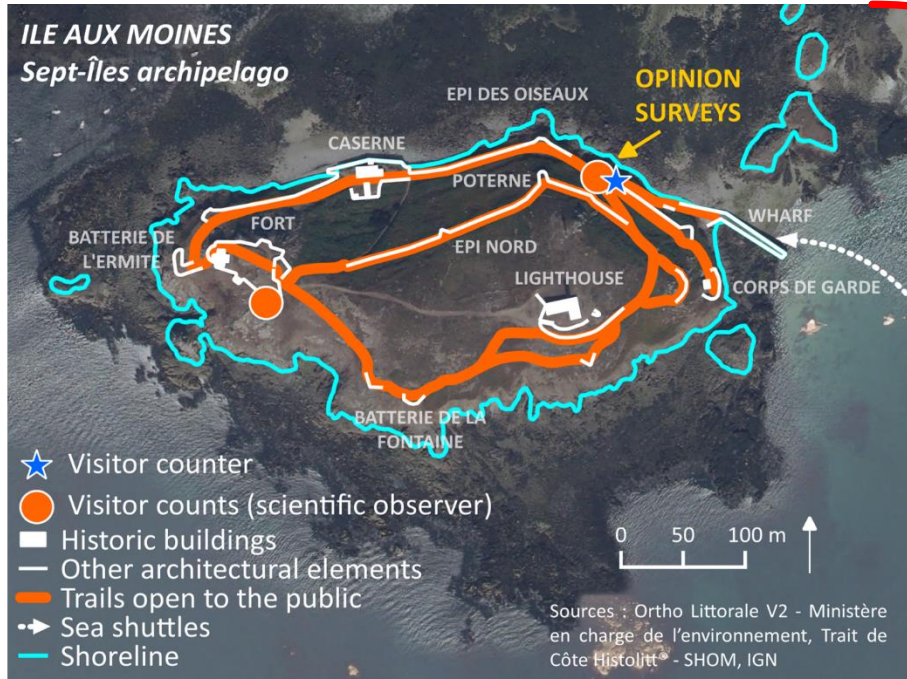
Qualify the visitor experience



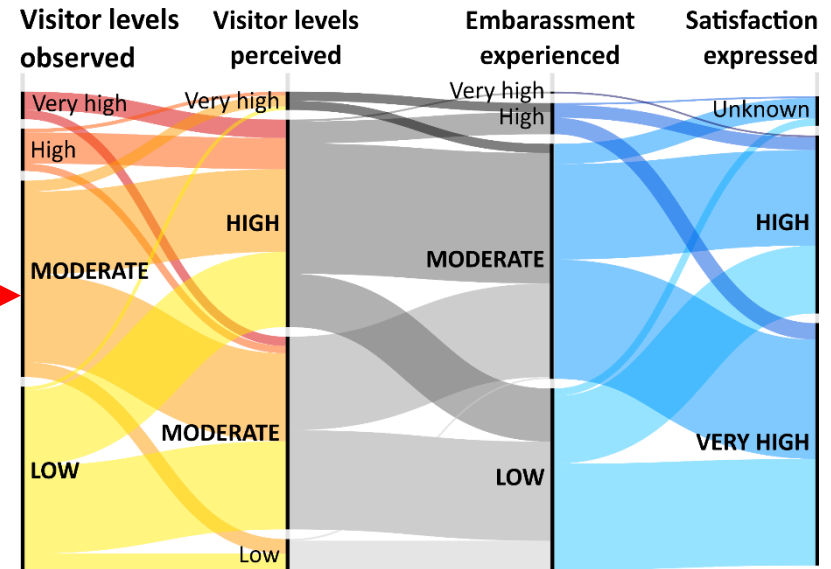
→ Systematic rev. + local assessment



Qualify the visitor experience



→ Systematic rev. + local assessment



CC → USEFUL?

- CC: a potential reference standard for small territories and some issues
- To be discuss in the broader context of a territorial project, defined by the stakeholders

MERCI !

Contact: eric.legentil@ird.fr

Web site: www.gis-hommer.org



REFERENCES

Cavalié L. (2018). *Evaluation de la capacité de charge de l'île aux Moines au sein de la réserve naturelle nationale des Sept-Îles*. Rapport de stage de Master 2, Université Paul Valéry Montpellier III, 74 pages.

Freytet A. (2011). *Reprise du réseau de sentiers et chemins de l'île aux Moines - AVANT PROJET SOMMAIRE*. Conservatoire de l'espace littoral et des rivages lacustres, Mairie de Perros-Guirrec, octobre 2011, 47 pages.

Le Gentil E., Alban F., Vaschalde D., Ponsoero A., Levrel H. (2016). *Capacité de charge des aires marines protégées. Comprendre – Agir – Evaluer – Innover. Echanges entre chercheurs et gestionnaires*. Rapport de synthèse de l'atelier Capacité de charge du GIS HomMer. 24 et 25 novembre 2015, Muséum National d'Histoire Naturelle, Paris. Avril 2016. 21 pages.

Le Gentil E. (2017). *Evaluation des capacités de charge. Cadres analytiques fréquemment employés pour la gestion de l'environnement*. Journées Scientifiques de l'Université de Toulon, séminaire « Capacité de charge », 25 avril 2017. Université de Toulon. 21 pages.

Provost P. (2015). *Plan de gestion 2015-2024 de la Réserve Naturelle Nationale des Sept-Îles*. LPO France, SEP, novembre 2015, 246 pages.

Sayre, N. F. (2008). The Genesis, History, and Limits of Carrying Capacity. *Annals of the Association of American Geographers*, 98(1): 120-134.