



HAL
open science

Optimal Price Menu Design of Electric Vehicle Charging Stations Providing Demand Response

Alix Dupont, Jean-Baptiste Breal, Yezekael Hayel, Panagiotis Andrianesis

► **To cite this version:**

Alix Dupont, Jean-Baptiste Breal, Yezekael Hayel, Panagiotis Andrianesis. Optimal Price Menu Design of Electric Vehicle Charging Stations Providing Demand Response. 2023. hal-04629774v1

HAL Id: hal-04629774

<https://hal.science/hal-04629774v1>

Preprint submitted on 22 Dec 2023 (v1), last revised 30 Jun 2024 (v2)

HAL is a multi-disciplinary open access archive for the deposit and dissemination of scientific research documents, whether they are published or not. The documents may come from teaching and research institutions in France or abroad, or from public or private research centers.

L'archive ouverte pluridisciplinaire **HAL**, est destinée au dépôt et à la diffusion de documents scientifiques de niveau recherche, publiés ou non, émanant des établissements d'enseignement et de recherche français ou étrangers, des laboratoires publics ou privés.



Distributed under a Creative Commons Attribution 4.0 International License

Optimal Price Menu Design of Electric Vehicle Charging Stations Providing Demand Response

Alix Dupont^{1,2}

Jean-Baptiste Breal¹

¹ EDF, France, Paris-Saclay
alix.dupont@edf.fr

Yezekeael Hayel²

² Avignon University

France
yezekeael.hayel@univ-avignon.fr

Panagiotis Andrianesis³

³ Department of Wind and Energy Systems

Technical University of Denmark
Kgs. Lyngby, Denmark
panosa@dtu.dk

Abstract—The growing adoption of Electric Vehicles (EVs) creates new challenges due to the increasing charging demand, but also opportunities for EV Charging Station Operators (CSOs) to leverage EV user flexibility. In this work, we consider an EV CSO who offers several power rates at different prices, and explore the problem of optimal price menu design. In this setting, EV users are inflexible in their parking duration but flexible in terms of their energy demand, and choose the option that maximizes their welfare, i.e., their utility minus their cost of charging. We formulate the optimal price menu design problem for a profit maximizing CSO as a Mixed Integer Linear Programming problem, which we compare against the outcome of social welfare maximization problem. We further account for the provision of demand response by the CSO, i.e., lowering its power consumption for a certain period given a certain price for remuneration, by adjusting the price menu (in real time), so as to discourage EV users with a lower need for energy from choosing higher power rates. Our numerical demonstrations provide useful insights on the construction of the optimal price menu.

Index Terms—Electric vehicle, charging station operator, optimal price menu design, demand response.

I. INTRODUCTION

Considering the growing adoption of Electric Vehicles (EVs) [1] public charging stations are attracting significant attention. Their aggregate power consumption may stress the grid and its assets, hence, leveraging the flexibility of the EV users is key to avoid costly and potentially unnecessary upgrades. An EV Charging Station Operator (CSO), with a capability to modulate its aggregate power consumption for a given period, can provide some type of demand response to the grid operator. For instance, the French distribution system operator offers remuneration in exchange for this type of services [2]. To this end, the CSO can intelligently design the options/services provided to EV users, by forming a dynamic charging price menu, with a variety of charging options/services, which can adapt to heterogeneous requirements of EV users using information that may be either provided by the users or obtained from the CSO statistics/data collected about its EV user characteristics/behavior.

There are a few works [3], [4], [5], [6] that have addressed the problem of designing a charging price menu for an EV

CSO. In a rather general setting for electric power loads [3], the consumers can choose an energy for intermediary times before their true deadline, with a price that depends on the aggregate power consumption. It is found that marginal cost pricing, combined with “earliest-deadline-first” charging maximizes the social welfare. In [4], the CSO offers a menu-based pricing, considering the EV user flexibility in the amount of energy and the deadline for charging. The charging station electricity is provided by either a local renewable energy source with zero cost, or by buying from the grid, therefore the cost depends on the charging station aggregate power consumption. EV users are assumed to provide information on both their energy demand and deadline. In [5], apart from modulating the price of each deadline in the service menu, the focus shifts to identifying optimal deadline values. The charging station scheduling problem is formulated as an optimal control problem, aiming at smoothing the aggregate power consumption and assuming a convex electricity cost for the CSO. In [6], the CSO offers different charging options to EV users that are flexible with their deadline for charging but have a pre-determined energy demand. A flexible deadline allows the CSO to charge EVs when the cost of electricity is low, but a long occupancy of the charging point may deprive a future arrival from charging. This deadline-differentiated pricing considers either full information on the EV user utility or a clustering to EV classes with similar energy demand and utilities. However, [5], [6] do not account for the EV user flexibility in their energy demand. In another relevant work [7], the EV users can choose between two charging levels, and the CSO objective is to set the prices so as to minimize the “dropping rate,” i.e., the proportion of EV users declining the entrance to the chosen charging station because of a long queue.

The aforementioned works require EV users to provide information on their parking duration (deadline) and/or their energy demand. Apart from privacy concerns, it is not unreasonable to assume that many users may not have a specific need in energy, and/or there may be some uncertainty in their parking duration. Furthermore, in the deadline-differentiated pricing, there may be no guarantee on the amount of energy charged if the EV user leaves sooner than expected (also not unreasonable to assume). For these reasons, we suggest a price menu that offers a guaranteed power for a certain

Submitted to the 23rd Power Systems Computation Conference (PSCC 2024).

price, so that EVs can choose among different power rates, thus guaranteeing a certain quality of service.

In this paper, our aim is to investigate the problem of the CSO price menu design and its capability to provide demand response. We consider a CSO equipped with a large enough number of charging points, i.e., the station's capacity (in terms of charging points) does not become a limiting factor for serving EVs. We also consider EV users that view charging more as an opportunity rather than an indispensable need. Hence, the parking duration depends only on their on-site activities — see, e.g., [8] on the in-elasticity of the parking demand. A profit maximizing CSO, using the information (or estimate) on the EV user utilities, would offer a price menu with different prices per power rate. Assuming a certain price for offering demand response in real-time, the CSO could then adjust the price menu to reduce its aggregate power consumption.

Our main contribution is three-fold. First, we formulate the price menu design problem of an EV CSO that differentiates the options in the power rate, instead of a deadline, as a Mixed Integer Linear Programming (MILP) problem. Second, we propose a setting for the provision of demand response by the CSO, given a price for reducing its aggregate power consumption over a certain time period, by adjusting its price menu in real-time. Third, we provide insights through numerical experimentation on the construction of the optimal price menu, and the trade-offs considered in terms of the CSO profits and the social welfare under different prices for electricity and demand response.

The remainder of the paper is organized as follows. Section II presents the preliminaries for the CSO and EV models. Section III formulates the price menu design problem, and Section (IV) describes the provision of demand response by the CSO. Section V discusses a numerical experimentation, and Section VI concludes and provides further research directions.

II. MODEL PRELIMINARIES

In this section, we introduce the EV CSO offered charging options (in Subsection II-A), the utility function of EV users, (in Subsection II-B), and we define the CSO profit (in Subsection II-C) and the social welfare (in Subsection II-D).

A. EV CSO Offered Charging Options

The CSO offers a discrete set of K options, denoted by $\mathcal{K} = \{1, \dots, K\}$, where option k corresponds to a power rate P_k and a price per energy unit (kWh) π_k . For notational simplicity, we denote the set of available options, which includes option $k = 0$ corresponding to “not charging,” i.e., $P_0 = 0$ and $\pi_0 = 0$, by $\mathcal{K}^+ := \mathcal{K} \cup \{0\}$.

The CSO options are ordered from lowest power rate to the highest, i.e., $P_{k-1} < P_k, \forall k \in \mathcal{K}$, with prices that are non-decreasing with the power rate, i.e.,

$$\pi_{k-1} \leq \pi_k, \forall k \in \mathcal{K}. \quad (1)$$

In most of the charging stations in reality, a higher charging price incurs a higher cost, see for example [9].

B. EV Utility

Let EV class $i \in \mathcal{I}$, where $\mathcal{I} = \{1, \dots, I\}$ is the set of EV classes, have an initial state of charge (upon arrival) denoted by e_i^0 , and parking duration denoted by d_i . Let e_i^{\max} denote the EV battery capacity, and e_i the state of charge at the time of departure. For brevity, we shall refer to EV i instead of EV class i .

If EV i charges at a power rate P , its state of charge at the time of departure is given by:

$$e_i = e_i^0 + P d_i. \quad (2)$$

Given any option k , EV i can charge at most $\min\{e_i^{\max} - e_i^0, P_k d_i\}$, so that the battery capacity is not exceeded. We can therefore denote the options available to EV i using a subset $\mathcal{K}_i = \{1, \dots, K_i\} \subseteq \mathcal{K}$, where K_i is defined as the highest available power rate such that the battery capacity is not exceeded given the parking duration d_i .

Let U_i denote the utility of EV i , which depends on the state of charge e_i at the time of departure, and is increasing and concave in e_i — standard in the EV literature [10]. Essentially, increasing the state of charge increases the EV utility but with diminishing returns (due to the concavity). From (2), we can express the dependency of the EV utility on the power rate P using $U_i(P)$.

Let $u_i(P_k)$ denote the marginal utility of EV i choosing option k related to power P_k , i.e.,

$$u_i(P_k) = \left. \frac{\partial U_i(P)}{\partial P} \right|_{P=P_k}. \quad (3)$$

Given the increasing and concave utility in e_i , which also, from (2), implies that the utility is increasing and concave in P , the marginal utility is non-negative and decreasing in k , i.e.,

$$u_i(P_{k-1}) \geq u_i(P_k) \geq 0, \quad \forall k \in \mathcal{K}_i^+. \quad (4)$$

Eq. (4) simply states that the marginal utility is positive but decreasing in the power rate, hence, there are diminishing returns when choosing an option with a higher power rate.

C. CSO Profit

The CSO buys electricity from the grid and sells electricity to EVs. Let λ_t be the price (per kWh) at which the CSO buys electricity at time t . Let c_i denote the average cost (per kWh) over time that the CSO incurs when charging EV i , which is given by:

$$c_i = \frac{1}{d_i} \int_{\tau_i^0}^{\tau_i^0 + d_i} \lambda_t dt, \quad (5)$$

where τ_i^0 and $\tau_i^0 + d_i$ are the arrival and departure times, respectively of EV i .

When EV i chooses option k , the CSO charges π_k (per kWh), whereas incurs a cost c_i (per kWh). Hence, the CSO profit for charging EV i choosing option k , denoted by $\Pi_i(\pi_k)$ to indicate the dependence on π_k , is then given by:

$$\Pi_i(\pi_k) = (\pi_k - c_i) P_k d_i. \quad (6)$$

D. Social Welfare

Let $W_i(\pi_k)$ denote the welfare of EV i choosing option k , which is the difference between their utility $U_i(P_k)$, and the cost of charging at the charging station, i.e.,

$$W_i(\pi_k) := U_i(P_k) - \pi_k P_k d_i. \quad (7)$$

Note that we express the dependence of the welfare on the price π_k , whereas the dependence of the utility is on the associated power rate P_k .

EV i aims at maximizing its welfare, hence, the optimal choice, k_i^* , is given by:

$$k_i^* = \arg \max_{k \in \mathcal{K}_i^+} W_i(\pi_k). \quad (8)$$

Using the concavity of the utility function and the price ordering (1), one can show that for any set of options the welfare increases (in k) until the option that corresponds to the optimal choice for the EV user, and then decreases. Hence, one can find the optimal choice, with a simple search among ordered options (from the lowest power rate to the highest power rate) until the welfare begins to decrease.

The *social welfare*, $W_i^S(\pi_k)$, i.e., the sum of the CSO's profit and the welfare of EV i choosing option k , is given by:

$$W_i^S(\pi_k) := \Pi_i(\pi_k) + W_i(\pi_k) = U_i(P_k) - c_i P_k d_i, \quad (9)$$

where we added the dependence on π_k , which naturally associates to the power rate P_k .

III. PRICE MENU DESIGN PROBLEM

In this section, we consider the price menu design problem of a CSO who has information on the distribution of EV users among a finite set of classes, \mathcal{I} . These classes and their weight over the population, denoted by θ_i for EV (class) i , can be obtained using data on the EV user behavior — see e.g., [6].

In what follows, we consider the price menu design problem under two objectives: (i) maximization of the expected CSO profit (in Subsection III-A), and (ii) maximization of the expected social welfare (in Subsection III-B). Notably, the two problems can be solved for each time period separately (no time coupling constraints), i.e., the CSO can update the price menu at each time period, assuming without loss of generality an hourly granularity, (although the offered price when an EV arrives will be binding for that EV for its entire parking duration). Hence, in the formulation we will not include a time index for brevity.

A. CSO Profit Maximization

The CSO expected profit is given by:

$$\mathbb{E}_\theta[\Pi_i(\pi_{k_i^*})] = \sum_{i \in \mathcal{I}} \theta_i (\pi_{k_i^*} - c_i) P_{k_i^*} d_i, \quad (10)$$

where k_i^* is the optimal choice of EV (class) i , which is given by (8). Hence, the CSO profit maximization problem is given by:

$$\begin{aligned} \max_{\pi, k^*} \mathbb{E}_\theta[\Pi_i(\pi_{k_i^*})] \text{ given by (10),} \\ \text{s.t. (1) and (8).} \end{aligned} \quad (11)$$

The optimal choice, k_i^* , for EV user i can be modeled using a binary variable, $a_{i,k}$, $\forall i \in \mathcal{I}$, $k \in \mathcal{K}_i^+$, denoting whether EV i chooses option k (value 1, otherwise 0). The expected profit is thus given by:

$$\mathbb{E}_\theta[\Pi_i] = \sum_{i \in \mathcal{I}} \sum_{k \in \mathcal{K}_i^+} \theta_i a_{i,k} (\pi_k - c_i) P_k d_i, \quad (12)$$

where we require that only one option is chosen, i.e.,

$$\sum_{k \in \mathcal{K}_i^+} a_{i,k} = 1, \quad \forall i \in \mathcal{I}. \quad (13)$$

Constraint (8) can then be reformulated using the big M method as follows:

$$\begin{aligned} W_i(\pi_k) + M^W \sum_{m \neq k} a_{i,m} \geq W_i(\pi_\ell), \\ \forall i \in \mathcal{I}, k, \ell \in \mathcal{K}_i^+, \ell \neq k., \end{aligned} \quad (14)$$

where M^W is a positive and sufficiently large number. Together with (13), Constraints (14) ensure that $a_{i,k_i^*} = 1$. The idea of this constraint is that for k such that $a_{i,k} = 0$, the inequality is verified because the *lhs* sum take a very large value with M^W . For the unique k such that $a_{i,k} = 1$, the *lhs* sum is equal to zeros, which enforce option k to be the optimal option in terms of EV welfare maximization.

The objective function in (12) contains a product of a binary variable $a_{i,k}$ and a non-negative continuous variable π_k . Using standard big M linearization techniques [11], we can replace the product by a new, non-negative, continuous variable, say $b_{i,k}$, $\forall i \in \mathcal{I}$, $k \in \mathcal{K}_i$, so that (12) becomes:

$$\mathbb{E}_\theta[\Pi_i] = \sum_{i \in \mathcal{I}} \sum_{k \in \mathcal{K}_i} \theta_i (b_{i,k} - a_{i,k} c_i) P_k d_i, \quad (15)$$

and add the following constraints:

$$b_{i,k} \leq a_{i,k} M^\pi, \quad \forall i \in \mathcal{I}, k \in \mathcal{K}_i, \quad (16a)$$

$$b_{i,k} \geq 0, \quad \forall i \in \mathcal{I}, k \in \mathcal{K}_i, \quad (16b)$$

$$b_{i,k} \leq \pi_k, \quad \forall i \in \mathcal{I}, k \in \mathcal{K}_i, \quad (16c)$$

$$b_{i,k} \geq \pi_k - (1 - a_{i,k}) M^\pi, \quad \forall i \in \mathcal{I}, k \in \mathcal{K}_i. \quad (16d)$$

Constraints (16) ensure that the variables $b_{i,k}$ take the value π_k when $a_{i,k} = 1$ and 0 otherwise. Specifically, constraints (16a) and (16b) enforce $b_{i,k} = 0$ when $a_{i,k} = 0$, whereas (16a) becomes redundant when $a_{i,k} = 1$. Constraints (16c) and (16d) enforce $b_{i,k} = \pi_k$ when $a_{i,k} = 1$, and they become redundant otherwise.

Summarizing, the CSO expected profit maximization problem, Π_{\max}^{CSO} is given by:

$$\begin{aligned} \Pi_{\max}^{\text{CSO}} : \quad & \max_{\pi, a, b} \mathbb{E}_\theta[\Pi_i] \text{ given by (15),} \\ & \text{s.t. (1), (7), (13), (14), and (16).} \end{aligned} \quad (17)$$

Problem (17) is a MILP problem.

B. Social Welfare Maximization

Using the aforementioned binary variable $a_{i,k}$, the expected social welfare is given by:

$$\mathbb{E}_\theta[W_i^S] = \sum_{i \in \mathcal{I}} \sum_{k \in \mathcal{K}_i} \theta_i a_{i,k} [U_i(P_k) - c_i P_k d_i]. \quad (18)$$

For practical purposes, in order to ensure a non-negative profit for the CSO (who sets the prices), we require from (15) that:

$$\sum_{i \in \mathcal{I}} \sum_{k \in \mathcal{K}_i} \theta_i (b_{i,k} - a_{i,k} c_i) P_k d_i \geq 0, \quad (19)$$

where $b_{i,k}$ are described by constraints (16).

Summarizing, the expected social welfare maximization problem, \mathbf{W}_{\max}^S , is as follows:

$$\begin{aligned} \mathbf{W}_{\max}^S : \quad & \max_{\pi, \alpha} \mathbb{E}_\theta[W_i^S] \text{ given by (18),} \\ & \text{s.t. (1), (7), (13), (14), (16) and (19).} \end{aligned} \quad (20)$$

Problem (20) is also a MILP problem.

IV. CSO DEMAND RESPONSE

In this section, we consider the case of a CSO providing demand response, by reducing the aggregate power consumption by a certain amount, during specific time periods. This reduction can be viewed as the provision of a reserve product (to be used interchangeably with demand response) — or flexibility as is often mentioned in the literature — *w.r.t.* its “usual” power consumption. Indeed, there is a long debate on how to determine such a “base case,” or whether this is even possible. However, for the purposes of this paper, we can employ the outcome of the CSO profit maximization problem as the “usual consumption,” upon which any reduction can be calculated. Alternatively, one can think of a day-ahead commitment on a certain power consumption (considering an expected profit maximization problem and the resulting power consumption given the “optimal price menu”) and a “real-time adjustment” of the price menu to reduce the actual consumption by a certain amount. In what follows, we consider the problem for the provision of demand response through a certain reduction in the aggregate consumption during a certain time period.

For clarity, we introduce the notation in the multi-period problem, whose horizon is represented by the set $\mathcal{T} = \{1, \dots, T\}$, assuming without loss of generality that t refers to an hourly period.

Let N_t denote the number of EV arrivals at time t , of expectation \bar{N}_t , and with weights per class i at hour t , $\theta_{i,t}$. For brevity, we define parameter $n_{i,t} = \bar{N}_t \theta_{i,t}$ representing the expected number of vehicles of class i arriving at time t .

The price menu is denoted by $\pi_{k,t}$, i.e., the prices can change every hour, assuming without loss of generality that the power rates, P_k , do not change every hour. Still, for each time period, prices should be ordered as in (1), i.e.:

$$\pi_{k-1,t} \leq \pi_{k,t}, \quad \forall k \in \mathcal{K}, t \in \mathcal{T}. \quad (21)$$

The binary variables $a_{i,k,t}$ denote whether EV i , arriving at time t , chooses option k , with:

$$\sum_{k \in \mathcal{K}_i^+} a_{i,k,t} = 1, \quad \forall i \in \mathcal{I}, t \in \mathcal{T}. \quad (22)$$

The optimal choice of EV i , that is k_i^* such that $a_{i,k_i^*,t} = 1$, arriving at time t is given by the following constraints:

$$\begin{aligned} U_i(P_k) - \pi_{k,t} P_k d_i + M^W \sum_{m \neq k} a_{i,m,t} &\geq U_i(P_\ell) - \pi_{\ell,t} P_\ell d_i, \\ \forall i \in \mathcal{I}, k, \ell \in \mathcal{K}_i^+, \ell \neq k, t \in \mathcal{T}, \end{aligned} \quad (23)$$

where we replaced the EV welfare by its definition — see (7).

Similarly to (16), the continuous variables $b_{i,k,t}$ verify the following conditions:

$$\begin{aligned} \forall i \in \mathcal{I}, k \in \mathcal{K}_i, t \in \mathcal{T} : \quad & 0 \leq b_{i,k,t} \leq a_{i,k,t} M^\pi, \\ & \pi_{k,t} - (1 - a_{i,k,t}) M^\pi \leq b_{i,k,t} \leq \pi_{k,t}. \end{aligned} \quad (24)$$

The aggregate expected profit over the time horizon, using (15) and parameter $n_{i,t}$, is given by:

$$\hat{\Pi}_{\mathcal{T}} = \sum_{t \in \mathcal{T}} \sum_{i \in \mathcal{I}} \sum_{k \in \mathcal{K}_i} n_{i,t} (b_{i,k,t} - a_{i,k,t} c_i) P_k d_i. \quad (25)$$

Let $\mathcal{T}_R = \{\tau_1, \dots, \tau_2\}$ be the set of time periods during which the CSO reduces the aggregate power consumption by a certain amount denoted by P_t^R , from the aggregate power consumption, denoted by P_t^Π that pertains to the solution of problem (17), which can be solved separately for each time period.

Let indicator (parameter) $\delta_{i,t',t}$ denote whether an EV of class i arriving at time t' is connected at time t , where $t \geq t'$ — i.e., for as long as its parking duration d_i . Let variable \hat{P}_t denote the expected aggregate power consumption, given by:

$$\hat{P}_t = \sum_{i \in \mathcal{I}} \sum_{k \in \mathcal{K}_i} \sum_{t'=1}^t n_{i,t'} a_{i,k,t'} P_k \delta_{i,t',t}, \quad \forall t \in \mathcal{T}. \quad (26)$$

The reduction of the power consumption for the provision of demand response is then enforced through:

$$\hat{P}_t \leq P_t^\Pi - P_t^R, \quad \forall t \in \mathcal{T}_R. \quad (27)$$

Summarizing, the CSO demand response problem, given a price λ_t^R for reducing the power consumption during hour t , is now as follows:

$$\begin{aligned} \mathbf{DR}_{\lambda^R}^{\text{CSO}} : \quad & \max_{\pi, \alpha, b, P^R} [\hat{\Pi}_{\mathcal{T}} \text{ given by (25)}] + \sum_{t \in \mathcal{T}_R} \lambda_t^R P_t^R, \\ & \text{s.t. (21) – (23), (26), and (27),} \end{aligned} \quad (28)$$

with $P_t^R \geq 0, \forall t \in \mathcal{T}_R$. As Problems (17) and (20),

Problem (28) is a MILP problem. They all can be solved using commercial solvers such as CPLEX.

So far, we have considered the expected number of arrivals per class, $n_{i,t}$, and calculated expected profits and power consumption. One may think that the provision of demand response, i.e., the reduction in power, should be enforced with

a higher probability. A simple way of enforcing a more conservative would be to replace the expected number of arrivals $n_{i,t}$ in constraint (26) by an appropriately-defined “worst-case” number of arrivals, during the periods \mathcal{T}_R (potentially even earlier). Indeed, in a practical setting, the CSO can resolve the problem, after each hour, and define the price menu dynamically every hour, with the information available up to that hour. However, due to space considerations, we will refrain from such settings in this first work. Future work will be directed to more elaborate robust optimization formulations and appropriate uncertainty sets as well as more dynamic settings that employ the information that becomes available during the day.

V. NUMERICAL RESULTS

In this section, we provide a numerical experimentation of the optimal price menu design problem. In Subsection V-A, we describe the test case (CSO and EVs). In Subsection V-B, we present the results from the profit and social welfare maximization problems, whereas in Subsection V-C, we discuss the results from the CSO demand response provision.

A. Test Case

1) *CSO*: We consider the provision of 4 power rates for charging: $P_1 = 2.5$ kW, $P_2 = 5$ kW, $P_3 = 7.5$ kW, and $P_4 = 10$ kW, i.e., $K = 4$. We note that we consider “low” charging rates [12] in our numerical illustrations to emphasize the fact that EVs view charging more as an opportunity than as an absolute need (which would make them less flexible or direct them to fast charging stations). However, our analysis remains relevant for higher charging rates.

2) *EVs*: We consider that all EVs have a battery capacity of 50 kWh, and charge between 20% and 80% of their state of charge. EV classes are determined by their initial state of charge and parking duration. We consider 3 different initial states of charge: 10 kWh, 20 kWh, and 30 kWh. We also consider 4 different parking durations: 1h, 2h, 3h, and 4h. Hence, in total, we have 12 EV classes, assumed to be equally distributed. EVs arrive at the charging station with a constant rate of 120 vehicles per hour, from 7am to 8pm. They share a quadratic utility function given by $U_i(P) = \alpha_i [P d_i - \frac{1}{2} \beta_i (P d_i)^2]$, where α_i, β_i , are positive scalars, which parameterize EV i willingness to charge while ensuring an increasing utility for practical power rates, and is assumed, without loss of generality, to depend only on the state of charge at arrival. Table I summarizes the 12 EV classes, the highest (in power rate) option available (K_i) for EV class i , and utility parameters. Big M values are set at 15 for M^W and 0.5 for M^π .

All problems were solved using CPLEX 22.1.1.0 solver.

B. Profit and Social Welfare Maximization Results

For convenience, we shall refer to the outcome of the CSO expected profit maximization problem (17), Π_{\max}^{CSO} , as the “Base Case,” and to the expected social welfare maximization problem (18), $\mathbf{W}_{\max}^{\text{S}}$, as the “Benchmark.”

TABLE I
PARAMETERS OF EV CLASSES

e_i / d_i	Class $i: K_i$				Utility Parameters	
	1 h	2 h	3 h	4 h	α_i	β_i
10 kWh	1: 4	2: 4	3: 4	4: 3	0.425	0.017
20 kWh	5: 4	6: 4	7: 2	8: 2	0.35	0.021
30 kWh	9: 4	10: 2	11: 1	12: 1	0.275	0.027

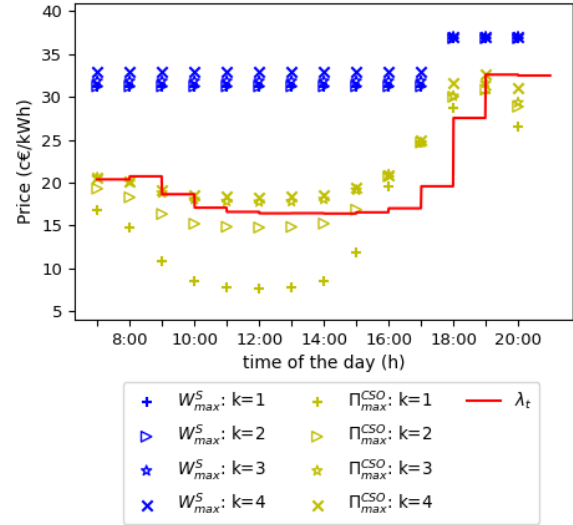


Fig. 1. Optimal price menu, Base Case and Benchmark.

Fig. 1 presents the optimal price menu for the Base Case and the Benchmark, as well as the electricity price (parameter), λ_t , that the CSO has to pay for charging the EVs (for comparison purposes). We observe that the Base Case optimal price menu remains always higher than the electricity price (maximizing CSO profit). For the most part of the day (from 7am to 5pm), when the electricity price is low (around 20 cents per kWh), the Base Case price menu remains stable (spanning around 2 cents from option 1 to option 4), whereas when the electricity price increases (from 6pm to 8pm), the price menu increases and remains practically stable for all options. The Base Case shape of the menu indicates that the optimal price menu when the CSO maximizes its profits is not very sensitive to small changes in the electricity price. This is attributed to the fact that the price menu considers also the utility of the EVs, whose optimal choices are discrete; hence, a small increase in the price might result in the EVs choosing a lower power rate or even not charging. Consider for example the case of EV class 5, which chooses at 5pm option 2. Note that this class could choose any option, however, it chooses option 2 and not the higher power rate option 3, even though the price difference (between options 2 and 3) is only 0.625 cents; hence, this small difference in price is enough to discourage EV class 5 from choosing option 3.

The Benchmark optimal price menu in Fig. 1 exhibits a different shape with a larger span during the day, and with some values that may be well below the electricity price. We

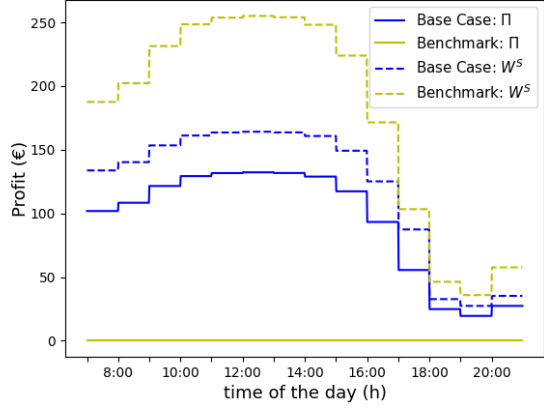


Fig. 2. Hourly profit and social welfare, Base Case and Benchmark.

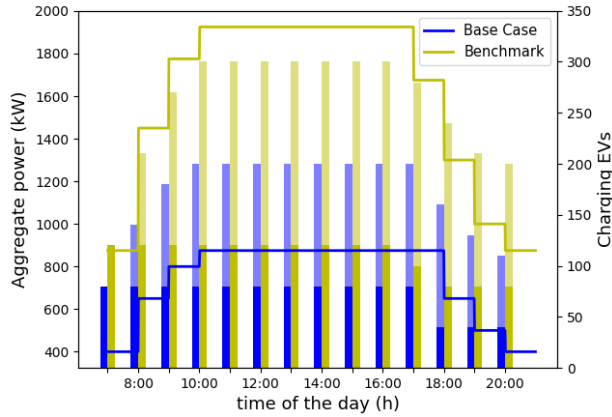


Fig. 3. Aggregate power consumption (left axis, line) and number of EVs deciding to charge (right axis, columns, lower part: EVs arriving at the hour; upper part EVs remaining from previous hours).

elaborate further on this shape by illustrating in Fig. 2, the hourly profit and social welfare, and in Fig. 3 the aggregate power consumption and the number of EVs deciding to charge, for the Base Case and the Benchmark. We observe in Fig. 2 that the maximum social welfare is achieved with zero profits for the CSO, and maximum welfare for the EV users. The trend of the Benchmark price menu follows the trend of a “weighted moving average” of the electricity cost of the charging station. Low prices attract EV users with a low marginal utility (i.e., those classes that need less to charge), and the price span is such that the CSO profit is zero, whereas the welfare of the EVs is maximized. Clearly, as shown in Fig. 3, the Benchmark maximizes social welfare by charging more EVs at lower prices (e.g., all arriving EVs decide to charge from 7am to 4pm), and consuming significantly higher power, peaking at 1,925 kW, whereas the Base Case maximizes profit by charging less EVs at higher prices, and peaking at 875 kW. The total social welfare over the entire day for the Benchmark is 2519.22 € (821.58 € higher compared to the social welfare

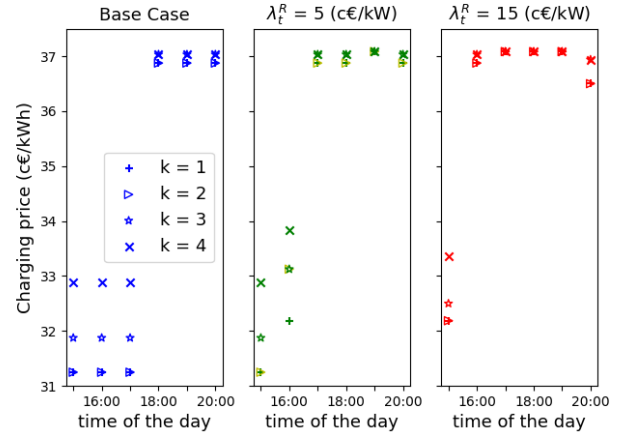


Fig. 4. Optimal price menu design during demand response period and for different price reserve

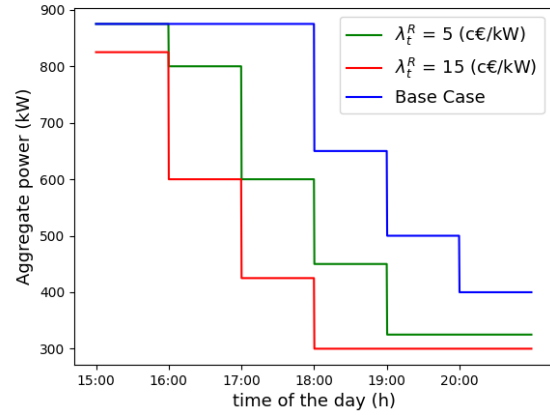


Fig. 5. Aggregate power consumption.

of the Base Case).

C. Demand Response Results

Using the solution of the Base Case as a “baseline” for the CSO aggregate consumption, we solve the demand response problem (28), with a 5-hour reserve period between 4pm and 9pm. We consider two cases for the reserve price (constant for the entire 5-hour period): $\lambda_t^R = 5$ c€/kW and $\lambda_t^R = 15$ c€/kW.

In Fig. 4, we present the price menu for the Base Case, and for the two different values of the reserve price. For reasons that will soon become apparent, we present the 5 hours affected (4pm, 5pm, 6pm, 7pm, 8pm) as well as the previous hour (3pm). In Fig. 5, we illustrate the aggregate power consumption, for the Base Case and the two reserve prices.

Considering first the lower reserve price (Fig. 4, middle), we observe that the main change *w.r.t.* the Base Case refers to hours 4pm and 5pm, when the prices increase (they span between 32 and 34 cents at 4pm, and reach 37 cents at 5pm).

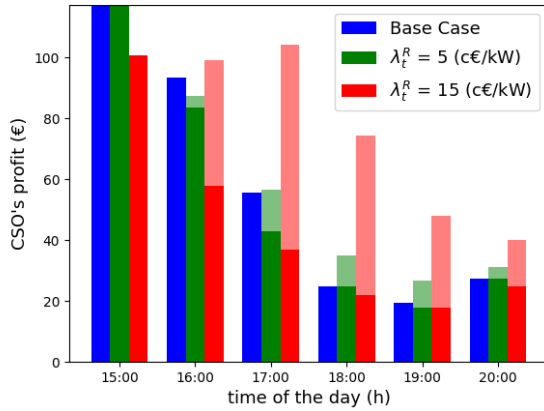


Fig. 6. CSO profit (lower part of column: profit for energy; upper part: revenue from demand response).

The reduction in the aggregate power consumption (Fig. 5, green line) is 75 kW at 4pm and 275 kW at 5pm. Note that the price menu at 6pm is the same with the Base Case, however, we still see a reduction by 200 kW, which is due to the lower amount of EVs charging in the previous hours (we remind that EVs may charge for 4 hours). The reduction reduces to 175 kW at 7pm and 75 kW at 8pm. Considering next the higher reserve price (Fig. 4, right), we observe that the prices increase earlier (slightly at 3pm, and then reach around 37 cents) achieving a higher reduction in the aggregate power consumption (Fig. 5, red line) starting with 50 kW at 3pm, to 275 kW at 4 pm, to 450 kW at 5pm, to 350 kW at 6pm to 200 kW at 7pm, and 100 kW at 8pm.

In Fig. 6, we illustrate the CSO profit for the Base Case and the two reserve prices, which includes the revenue for providing demand response. We observe that at 3pm, the Base Case and the lower reserve price yield the same profit, whereas the higher reserve price yields lower profit (compare with the higher prices in Fig. 4, right). However, the profit of the higher reserve price (red column) is the highest in all other hours. The profit of the lower reserve price (green column) becomes higher than the Base Case at 5pm and remains higher until 8pm. The total profit over the entire day for the Base Case is 1,323.45 €. The total profit when providing demand response increases by 16.04 € (1.21 %) for the low reserve price, and by 128.41 € (9.70%) for the high reserve price. The total social welfare over the entire day for the Base Case is 1697.64 €. Accounting for the revenues from demand response, it decreases by 40.66 € for the low reserve price, and by 3.28€ for the high reserve price. Considering the total welfare of the EVs over the entire day, which is 374.19 € for the Base Case, it decreases to 301.46 € for the low reserve price, and to 114.08 € for the high reserve price.

VI. CONCLUSIONS AND FURTHER RESEARCH

In this work, we considered a CSO who serves EVs that are not flexible in their parking duration but they are flexible

in their energy demand, offering different charging rates at different prices. Arguably, this CSO model can fit well public charging stations, considering the future EV adoption, where charging will be viewed as an opportunity (e.g., in a public parking station), and charging point availability is unlikely to be a limiting factor. In this context, we formulated the optimal price menu design problem as a MILP problem, considering both a profit maximizing CSO and a social welfare maximization (as a benchmark). We further accounted for the provision of demand response by considering an adjustment of the price menu (in real time) to reduce the aggregate power consumption and benefit from a certain price for remuneration (as a type of reserve deployment). Our numerical experimentation illustrated the construction of the optimal price menu, the trade-offs considered for the CSO profit and the social welfare, and the price menu adjustment to provide demand response under different (reserve) prices.

Future research is directed to account for uncertainty in the parking duration and the EV user utility through robust optimization approaches and the construction of appropriate data-driven uncertainty sets. More elaborate price menus which might also relate to the EV state of charge, as well as CSO-EV contracts for lowering the charging rate in case of demand response provision, are also interesting directions for further research.

ACKNOWLEDGMENT

This research paper benefited from the support of the FMJH Program PGMO and from the EDF support to this program.

REFERENCES

- [1] IEA, "Global EV Outlook 2023, Technical report." Available: <https://www.iea.org/reports/global-ev-outlook-2023>. [Online; accessed October 1, 2023].
- [2] "Enedis' website: call for tenders." Available: <https://www.enedis.fr/co-construction-flexibilite-locale>. [Online; accessed October 1, 2023].
- [3] E. Bitar and Y. Xu, "Deadline differentiated pricing of deferrable electric loads," *IEEE Transactions on Smart Grid*, vol. 8, no. 1, pp. 13–25, 2017.
- [4] A. Ghosh and V. Aggarwal, "Control of charging of electric vehicles through menu-based pricing," *IEEE Transactions on Smart Grid*, vol. 9, no. 6, pp. 5918–5929, 2018.
- [5] Y. H. Z. Owen Q. Wu, Şafak Yücel, "Smart charging of electric vehicles: An innovative business model for utility firms," *Manufacturing Service Operations Management*, vol. 24, no. 5, pp. 2481–2499, 2021.
- [6] C. Lu, J. Wu, J. Cui, Y. Xu, C. Wu, and M. C. Gonzalez, "Deadline differentiated dynamic ev charging price menu design," *IEEE Transactions on Smart Grid*, vol. 14, no. 1, pp. 502–516, 2023.
- [7] Y. Zhang, P. You, and L. Cai, "Optimal charging scheduling by pricing for ev charging station with dual charging modes," *IEEE Transactions on Intelligent Transportation Systems*, vol. 20, no. 9, pp. 3386–3396, 2019.
- [8] G. Pierce and D. Shoup, "Getting the prices right," *Journal of the American Planning Association*, vol. 79, pp. 67–81, 2013.
- [9] "Charge place scotland tariffs." Available: <https://chargeplacescotland.org/charge-point-tariffs/>. [Online; accessed October 1, 2023].
- [10] P. Samadi, A.-H. Mohsenian-Rad, R. Schober, V. W. Wong, and J. Jatskevich, "Optimal real-time pricing algorithm based on utility maximization for smart grid," in *IEEE International Conference on Smart Grid Communications*, pp. 415–420, 2010.
- [11] R. M. Fortet, "L'algebre de boole et ses applications en recherche operationnelle," *Trabajos de Estadística*, vol. 11, pp. 111–118, 1960.
- [12] R. Wolbertus and R. van den Hoed, "Fast charging systems for passenger electric vehicles," *World Electric Vehicle Journal*, vol. 11, pp. 1–11, 12 2020.