



HAL
open science

Exploring the centre of mass properties of LG-like galaxies

Jean-Baptiste Salomon, Noam Libeskind, Yehuda Hoffman

► **To cite this version:**

Jean-Baptiste Salomon, Noam Libeskind, Yehuda Hoffman. Exploring the centre of mass properties of LG-like galaxies. *Monthly Notices of the Royal Astronomical Society*, 2023, 523 (2), pp.2759-2769. 10.1093/mnras/stad1598 . hal-04628473

HAL Id: hal-04628473

<https://hal.science/hal-04628473>

Submitted on 30 Jun 2024

HAL is a multi-disciplinary open access archive for the deposit and dissemination of scientific research documents, whether they are published or not. The documents may come from teaching and research institutions in France or abroad, or from public or private research centers.

L'archive ouverte pluridisciplinaire **HAL**, est destinée au dépôt et à la diffusion de documents scientifiques de niveau recherche, publiés ou non, émanant des établissements d'enseignement et de recherche français ou étrangers, des laboratoires publics ou privés.

Exploring the centre of mass properties of LG-like galaxies

Jean-Baptiste Salomon¹,^{1,2,3}★ Noam Libeskind² and Yehuda Hoffman¹

¹*Racah Institute of Physics, Hebrew University, Jerusalem 91904, Israel*

²*Leibniz-Institut für Astrophysik Potsdam, An der Sternwarte 16, D-14482 Potsdam, Germany*

³*Institut UTINAM, CNRS UMR6213, Univ. Bourgogne Franche-Comté, OSU THETA, Observatoire de Besançon, BP 1615, F-25010 Besançon Cédex, France*

Accepted 2023 May 23. Received 2023 May 15; in original form 2023 January 7

ABSTRACT

From high resolution cosmological simulations of the Local Group in a realistic environment, namely HESTIA simulations, we study the position and kinematic deviations that may arise between the disc of a Milky Way (or Andromeda)-like galaxy and its halo. We focus on the three-dimensional analysis of the centres of mass (COM). The study presents two parts. We first consider individual particles to track down the nature and amplitude of the physical deviations of the COM with respect to the distance from the disc centre. Dark matter dominates the behaviour of the COM of all particles at all distances. But the total COM is also very close to the COM of stars. In the absence of a significant merger, the velocity offsets are marginal (10 km s^{-1}) but the positional shifts can be important compared to the disc characteristics ($> 10 \text{ kpc}$). In the event of a massive accretion, discrepancies are of the same order as the recent finding for the MW under the Magellanic Clouds influence. In a second part, the accent is put on the study of various populations of subhaloes and satellites. We show that satellites properly represent the entire subhalo population. There exists strong mismatch in phase space between the satellites' COM and the host disc. Moreover, the results are highly inhomogeneous between the simulations and thus, between the accretion histories. Finally, we point out that these shifts are mainly due to a few of the most massive objects.

Key words: galaxies: disc – galaxies: dwarf – galaxies: haloes – galaxies: kinematics and dynamics – Local Group – dark matter.

1 INTRODUCTION

A thorough knowledge of the most basic parameters of a galaxy, namely the position and velocity of its centre, is essential to understand how galaxies move with respect to each other. In the Λ CDM framework, the classic model for a massive spiral galaxy is that of an equilibrium disc in a stationary state at the very centre of its (possibly) triaxial halo. Objects such as dwarf galaxies orbit inside the halo and around the central galaxy. This simple picture is often adopted, especially in the Local Group (LG), because it allows cosmologists to model complicated systems. For example, if the Andromeda galaxy (M31) and the Milky Way (MW) – the two main galaxies of the LG – are treated as point particles, the so-called ‘timing argument’ allows for an estimation of the LG mass assuming some cosmological parameters (e.g. Peñarrubia et al. 2014). Such hypotheses have enabled scientists to make great advances; however, it is also acknowledged that these are simplifying assumptions that only provide an approximate description of nature.

Upon closer examination, a number of faults can be identified. First of all, the central disc can be intrinsically perturbed, for example, by spiral arms or bar buckling instabilities (Debatista 2014; Faure, Siebert & Famaey 2014; Monari et al. 2016; Khoperskov et al. 2019). Secondly, the structure of the disc can also be perturbed by external interference like a dwarf galaxy being accreted or a

satellite encounter (Gómez et al. 2013; Widrow et al. 2014; Chequers, Widrow & Darling 2018; Laporte et al. 2018). Finally, the population of satellites is not necessarily relaxed, and the mass of the satellites is not always negligible. Both the disc and the halo can then undergo deformations and warpings, as for example, the MW under the effect of the Magellanic clouds (Weinberg 1998; Garavito-Camargo et al. 2019; Conroy et al. 2021). Hence, the halo and the disc can have different dynamics (Petersen & Peñarrubia 2021).

Consequently, when the galaxy is perturbed, especially in the case where much mass is held in satellites, the system goes out of stationary equilibrium (Erkal et al. 2021). In this situation, the centre of the disc of the host galaxy does not necessarily coincide with the centre of the dynamical system as a whole (i.e. the halo plus satellites). Although conflating these two centres is convenient, it risks moving away from the true physical nature of the system. For example, the calculations of satellite orbits can be skewed when the centre of the host galaxy is artificially locked (White 1983; Gómez et al. 2015). Also, the local dark matter density can be overestimated by 20 per cent if the false assumption that the Galaxy is in equilibrium is taken (Banik, Widrow & Dodelson 2017; Haines et al. 2019; Salomon et al. 2020). The interpretation of the content and dynamics of the halo is then biased. The mass of the MW enclosed in a larger radius, from 100 to 200 kpc, can also be largely overestimated in an equilibrium scenario – from about 15 to up to 50 per cent (Erkal, Belokurov & Parkin 2020; Correa Magnus & Vasiliev 2022). Last but not least, the application of the timing argument model to the LG shows a mass of a few tens of per cent

* E-mail: jean-baptiste.salomon@utinam.cnrs.fr

lower when the MW is considered out of equilibrium than when it is considered in equilibrium (Benisty et al. 2022; Chamberlain et al. 2022).

These simplifying assumptions may induce non-uniform effects on the different methods employed for measuring the PM of M31 (van der Marel & Guhathakurta 2008; Sohn, Anderson & van der Marel 2012; Salomon et al. 2016; van der Marel et al. 2019; Salomon et al. 2021). Indeed, current values of the relative transverse velocity of the M31 galaxy with respect to the MW show a great discrepancy (see fig. 6 in Salomon et al. 2021). This is especially true when comparing the values derived by ‘direct’ methods with those obtained by ‘indirect’ methods. Direct methods rely on the study of the proper motions of individual stars identified as belonging to the M31’s disc to derive an overall motion of the galaxy (Sohn et al. 2012; van der Marel et al. 2019; Salomon et al. 2021). Indirect methods, on the other hand, study the ensemble motion of the satellites of M31, under the assumption that the satellites, being embedded in the main halo, follow the same overall mean velocity as their host galaxy (van der Marel & Guhathakurta 2008; Salomon et al. 2016). The different values of transverse velocities imply different trajectories: towards the south-east for the direct methods and towards the north-west for the indirect methods. Of course, one could argue that a reasonable value is the median, thus favouring a purely radial orbit. This is arguable, especially in view of the large uncertainties with both types of methods. But another way of approaching the problem is to consider that we are comparing the results of two fundamentally different things. For example, the disc itself but also the population of satellites and thus the entire halo may not be in equilibrium. Therefore, those different components will not have the same position and velocity of barycentre.

Aware of these pitfalls, the community is making great progress in the study of non-equilibrium models. However, the efforts are mainly concentrated on the most important disturber of the MW, the Large Magellanic Cloud (LMC). The same is true for N -body simulations, which try to reproduce the LG. If these efforts are crucial to improve our knowledge, it is also necessary to study in a more broad-based approach, the impact of the whole content of a halo and the decoupling appearing with its central disc in a cosmological context.

Hence, the hypothesis we propose to explore in this article is to use constrained cosmological simulations of the LG to qualitatively evaluate the extent to which the central baryonic disc, the satellites, and the halo are offset in terms of their position and kinematics. The paper is organised as follows. In Section 2, we present the frame of work, which is the simulated data and benchmarks used in the study. Then, we undertake a comprehensive and extensive study of the evolution of the positions and velocities of the centres of mass (COM) of the different types of particles for each host galaxy in Section 3. More specifically, we compare the phase-space configuration of the COM of the disc with that of its halo content with respect to the distance to the centre. In Section 4.1, we study the COM of subhaloes populations, while in Section 4.2, we focus on satellites. Then in Section 5, we statistically investigate the impacts of massive satellites. Finally, we summarise and conclude in Section 6.

2 SIMULATIONS

2.1 Data

The High-resolutions Environmental Simulations of The Immediate Area (HESTIA) project (Libeskind et al. 2020) is a suite of magneto-

Table 1. Main properties of the three HESTIA high resolution simulations containing a LG analogue at $z = 0$. The first column presents the identifiers of the simulations. The masses M_{200} (mass enclosed within the radius within which the mean density is 200 times the critical density) of the two most massive haloes in the simulated LG is given in the second (for the Andromeda galaxy) and third columns (for the MW). The fourth column is the separation between the centres of these two haloes. The relative radial and tangential velocities between the two main haloes are given in the fifth and sixth columns.

Name	M_{M31} $10^{12} M_{\odot}$	M_{MW} $10^{12} M_{\odot}$	d kpc	v_r km s^{-1}	v_t km s^{-1}
09_18	2.13	1.94	866	-74.0	54.0
17_11	2.30	1.96	675	-102.2	137
37_11	1.09	1.04	850	8.86	71.1

hydrodynamical cosmological simulations run with the moving mesh cosmological simulation code Arepo (Springel 2010) that employs the Auriga model (Grand et al. 2017) for star formation and feedback. We refer the reader to (Libeskind et al. 2020) for details regarding the simulations and only highlight the most salient points here. The HESTIA simulations are constrained simulations of our local environment that use as input the local cosmography as described by the peculiar velocity field (Sorce et al. 2014). The initial conditions have been carefully selected in order to reproduce – at redshift zero – a LG similar to the observations. Hundreds of simulations have been run, and those which most closely reproduce the LG, and its environment are kept for further study, including high resolution simulations.

The three high resolution simulations used in this study, named 09_18, 17_11, and 37_11, thus have a similar cosmological environment. Those LGs contain two giant spiral galaxies of mass equivalent to that of the MW and the M31 galaxy. They dominate their immediate environment, which means that there are no other large galaxies near them. And a cluster, of the same mass as Virgo ($\gtrsim 10^{14} M_{\odot}$), is located at the equivalent distance (~ 17 Mpc). Finally, the LG galaxies are separated by a distance of around 0.7 Mpc and are approaching each other or are close to doing so. The properties of these three simulations relevant to this work are summarized in Table 1.

In Section 3, we study the behaviour of all the particles belonging to the host galaxy. There are four kinds of particles (or equivalent cells) in the simulations: gas, dark matter, star, and black hole. The spatial resolution is 220 pc with a mass resolution of $1.5 \times 10^5 M_{\odot}$ for dark matter and $2.2 \times 10^4 M_{\odot}$ for the gas. Since we have three high-resolution LG systems, there are six host galaxies similar to M31 (see Fig. 1). Note that the nomenclature ‘M31’ and ‘MW’ used throughout the HESTIA project is somewhat arbitrary: the two LG members have roughly the same mass, as such the more massive one was termed M31.

Only the final $z = 0$ snapshot of each simulation is used. The properties of the haloes, subhaloes as well as the identification of the particles composing them have been identified with the Adaptive Mesh Investigations of Galaxy Assembly (Amiga) Halo Finder (AHF, Gill, Knebe & Gibson 2004; Knollmann & Knebe 2009). In brief, AHF lays a hierarchy of grids, refining more and more in order to identify iso-density contours. The halo finder defines a halo centre as the position of the densest cell of the highest refinement level. The halo boundary is determined as R_{200} , the radius within which the mean density is 200 times the critical density.

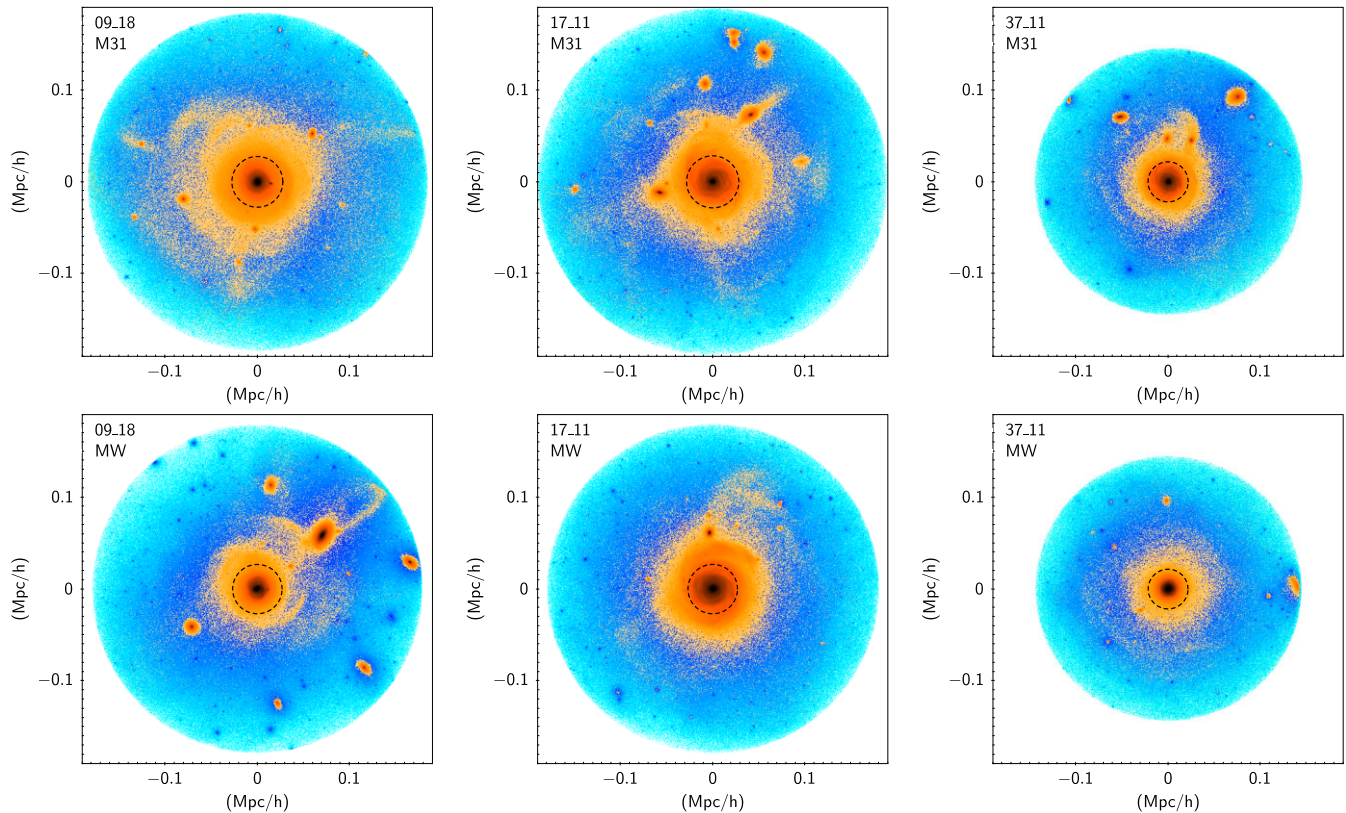


Figure 1. Face on projection at $z = 0$ of the six host galaxies from the three high resolution HESTIA simulations of the LG analogues, 09_18, 17_11, and 37_11 from left to right. Figures are centred on the disc centre of mass as derived in Section 2.2. The names M31 (top row) and MW (bottom row) distinguish the more and less massive host in each of the simulated LG. Blue gradient colour traces density of dark matter particles from low (light blue) to high (dark blue) densities. Orange gradient colour traces density of star particles from low (light orange) to high (dark orange) densities. Only particles within R_{200} of the host galaxy and identified as gravitationally bounded to it are represented. The dotted black circle delimits the radius of $0.15 \times R_{200}$ considered in this study within which the particles belonging to the host have been used to calculate the central disc properties.

2.2 Disc centre of mass

The collections of particles bound to each of the six host galaxies within R_{200} are identified by AHF. To define the galactic disc for a given host, we first remove the particles picked out as belonging to subhaloes or satellites, creating a kind of ‘Swiss cheese’ topology. The remaining particles are called ‘the host sample’. All the particles or equivalent cells (star, dark matter, black hole, and gas) from the host sample contained in a sphere centred on the AHF centre of the main halo and of radius $0.15 \times R_{200}$ are then considered. The barycentre of this set of particles is calculated. Then, a new sample is built from the host sample again, defined as the ensemble of particles contained in a sphere centred on the new barycentre and again of radius $0.15 \times R_{200}$. The calculation is reiterated until convergence – about ten times. Eventually, the position (\vec{x}_c) and the velocity (\vec{v}_c) of the centre of mass (COM)¹ of the host galaxy are obtained.

We then calculate the angular momentum of this host sample. A new Cartesian coordinate referential frame centred on \vec{x}_c is adopted for the simulations where the z -axis is aligned with the angular momentum vector. It allows to compute the velocity space (v_r , v_θ , v_z) centred on \vec{v}_c . In each of the simulations, the distribution of v_r and v_z is a near symmetric normal distribution centred on 0 while the distribution of v_θ exhibits a Poisson shape with maximum values

between 200 and 250 km s^{-1} . Hence, the velocity spaces clearly illustrate a rotating structure for host sample’s stars in all simulations. Moreover, the star particles dominate the other components in the very inner part in term of the mass budget. These properties allow us to claim that the centre (\vec{x}_c , \vec{v}_c) found is coincident with the centre of the host disc.

The value of 15 per cent of R_{200} is motivated by the observed MW since the disc is around 15 kpc (see e.g. Robin, Creze & Mohan 1992) and its radius R_{200} is around 220 ± 60 kpc (see e.g. McMillan 2011). Selecting particles within a radius of about twice that of the MW’s disc is sufficiently large to ensure the entire disc is targeted. The results shown here are more or less indifferent to reasonable assumptions regarding the disc size in these simulations. Specifically, changing the disc size by making it larger or smaller by 2 per cent of R_{200} (i.e. approximately ± 5 kpc) changes the centre by less than the softening length (220 pc). The velocity is modified by a maximum of 1.3 km s^{-1} . Larger disc radius modifications (± 10 per cent of R_{200} , approximately ± 25 kpc) lead to a variation of the centre position of not more than four times the smoothing length (880 pc) and of the centre velocity of at most 6 km s^{-1} . To remain conservative, we will neglect in the following any positional shifts below 1 kpc and the velocity offsets smaller than 6 km s^{-1} . We also point out that throughout the rest of the paper we will be comparing peculiar velocities, as the differences in distances we will encounter are negligible compared to the typical cosmological distances of the Mpc.

¹We use the terms barycentre and centre of mass interchangeably throughout this paper.

In Fig. 1, we present the face on projections (perpendicular to the angular momentum vector previously calculated) of each simulated MW and M31 under consideration. Each galactic disc is demarcated by a dotted black circle. The final two vectors \vec{x}_c and \vec{v}_c will be used for the rest of the study as references for position and velocity comparisons, respectively.

3 CENTRE OF MASS DEVIATION FOR PARTICLES

3.1 Positional offsets at the particle level

We begin our investigation by examining the deviations in mean position and velocity between the disc centre (namely \vec{x}_c and \vec{v}_c), and three different components of the simulation (i.e. star particles, dark matter particles, and gas cells) as a function of the distance. We recall that \vec{x}_c and \vec{v}_c are computed from all components in the iterative way described above. At a distance $0 \leq R \leq R_{200}$, the particles identified as being bound to the main halo and centred on the x_c position are considered. At a given radius, the COM position of each particle type as well as that of all particles in addition to black holes is derived and compared to the COM position of the disc (see Fig. 2). In a similar way, the velocities of the different COMs are calculated at each radius and compared with the COM velocity of the disc (see Fig. 3).

Concerning the offsets in position, several points can be noted. First, in the central part, corresponding to the disc, the deviations for the stellar and dark matter particles are minimal, well below 1 kpc. Only the COM of the gas cells can slightly deviate from the COM of the disc, highlighting the non-homogeneity of the gas distribution in and around a spiral galaxy. The impact on the behaviour of the whole system is, however, negligible because the gas component is diffuse and not very massive compared to the dark matter component or the stellar component.

Secondly, the general behaviour of the deviations is dominated by that of the dark matter particles at any radius. The green curve in Fig. 2 (all particles) is very close to the dark curve (dark matter particles). This feature is expected as the dark component gravitationally dominates the halo.

In addition, the stellar component is not strictly correlated with the dark component. The star COM undergoes steeper variations and fluctuations in position as a function of radius. By contrast, the dark component, and hence the COM of the whole system, go through smoother deviations. This reflects both the small fraction of stellar particles present outside the disc of the host galaxy and also the intrinsic nature of dark matter particles themselves, which have a weak interaction with their environment, and consequently a less sharp distribution.

The positional shifts between the disc and the COMs of the system are often increasing only as the radius of the sphere containing the particles considered increases. We might have expected not to have this effect. Indeed, with a relatively homogeneous system, considering a larger volume will smooth out the bumps and decrease the deviations. The differences at R_{200} are at least an order of magnitude larger than the differences between the edge of the disc and its centre. The deviations are particularly marked when a massive satellite is present at a given radius (see for example, simulation 09_18 of the MW). This results in a large diversity of positional shifts at R_{200} between the disc COM and the host halo system COM, spanning the values [1.5, 1.6, 2, 11.5, 14, 30] kpc. Some of these deviations are very important with respect to the typical size of a spiral galaxy, or even to the solar radius for example, which is about 8 kpc. Thus,

these misalignments, arising from the merger history or directly from the presence of a satellite, cannot be neglected in the study of the dynamics of a typical MW (or M31) galactic system at the scale of its halo.

3.2 Velocity shifts at the particle level

The velocity shifts (Fig. 3), on the other hand, can give rise to slightly different conclusions. The velocity gaps between the edge of the disc and its centre are kept between 5 and 10 km s⁻¹ for the stellar particles at the limit of our confidence threshold in the detection of velocity gaps (established at 6 km s⁻¹ in Section 2.2). These values are, nevertheless, not surprising and remain within the range of expected and observed variations of the velocity dispersions for a spiral galaxy (e.g. Robin et al. 2022). Over the same radius range, the velocity offsets for dark matter follow similar fluctuation amplitudes. This allows us to observe that baryons are tracers of the overall dynamics of the disc as they overwhelm the mass budget in the central part. When particles outside the disc and up to R_{200} are considered, the velocity fluctuations are usually not larger. The shifts are in fact of the same order of magnitude as in the disc, with sometimes a very slight increase. This is also true for the two simulations of 17_11 and 37_11 (M31), which, despite having a maximum positional offset of more than 10 kpc, do not show excessive velocity shifts.

There is one noticeable exception, the 09_18 simulation for the MW, where the COM velocity of each type of particle, and thus of course also of all particles, diverges drastically from the COM velocity of the disc. Indeed, in this simulation, the central galaxy experiences a non-negligible accretion event. A sinking satellite comes within about 130 kpc of the host, clearly visible on the top right of the disc in Fig. 1. The total mass ratio between the host galaxy and the satellite is about 1:10. It is massive enough to make the velocity of the COM of the ensemble of particles deviate by more than 60 km s⁻¹ at R_{200} with respect to the disc velocity. The positive point is that this deviation is also traced by the stellar particles and could therefore be observed, analysed, and corrected if necessary. Although the satellite in this simulation does not have exactly the same characteristics as the Magellanic clouds, it is nevertheless interesting to mention that this velocity offset between the disc of the 09_18 (MW) simulation and the COM of its halo of 66 km s⁻¹ is almost equal to the recent measurement of the velocity of the MW disc relative to its satellites, and about twice the preferred velocity of the disc relative to its halo (Petersen & Peñarrubia 2021). According to them, this disc travel velocity would be mostly caused by the recent passage of the Large Magellanic Cloud, which is approaching the Galaxy and is about 50 kpc from it.

In this first part, the COM behaviour of each type of particle has been analysed as a function of the distance to the centre of the disc. From a global point of view, it is reasonable to consider as true, the hypothesis that star particles trace the behaviour of dark matter, and thus of the system as a whole, both in terms of position and kinematics of the barycentre. Of course, at a finer level, stars are more subject to rapid fluctuations compared with dark matter, which is inherently more smoothly distributed.

Given the very nature of gas cells in the simulation, they follow the behaviour of the other particles only very marginally with large variations. This has nevertheless had a very limited impact on the COM calculation, which remains steady in spite of the stirring of the gas. Indeed, at redshift zero, gas contributes in average to about 7 per cent of the total mass enclosed in the R_{200} radius, about the same as for the amount of stars (~6 per cent). But the gas distribution is more scattered and simultaneously smoothly distributed, being widely

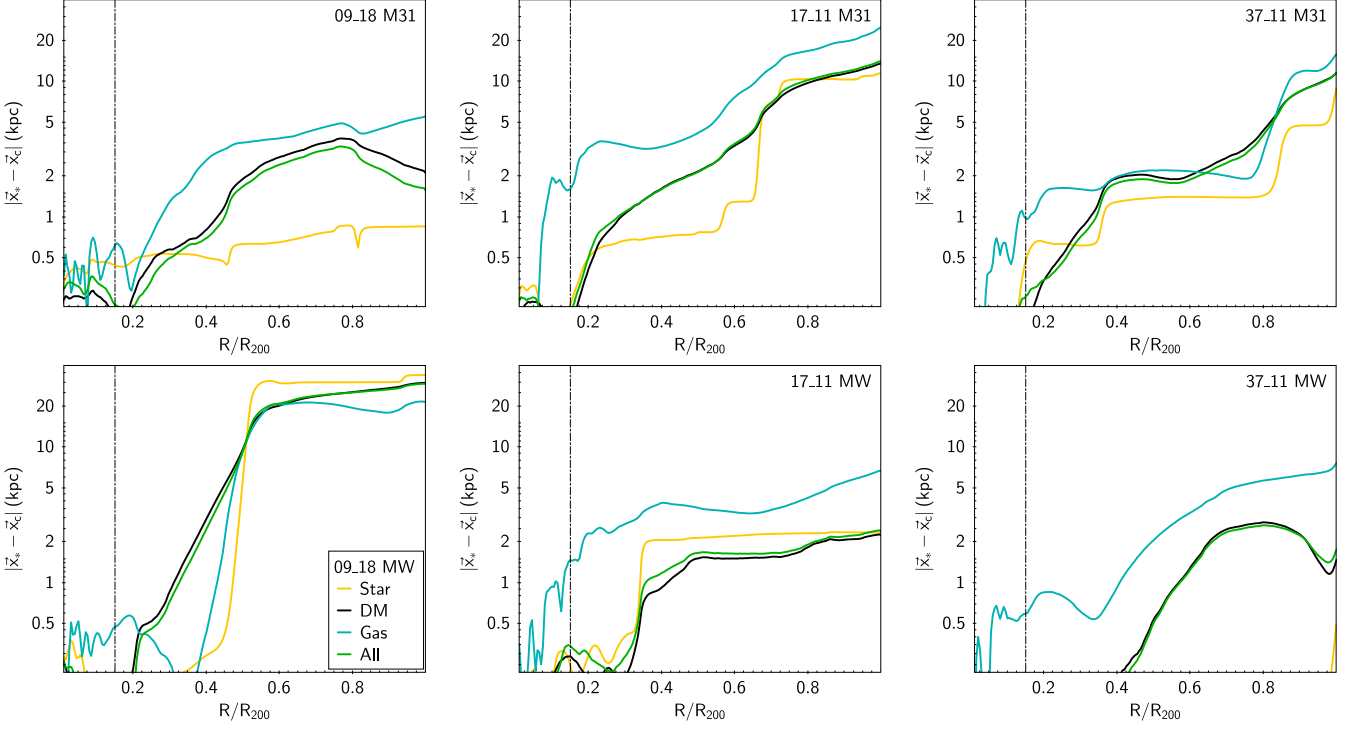


Figure 2. For the six host galaxies in the high resolution HESTIA simulations, absolute differences in position between the disc centre and the centres of mass of different types of particles (or equivalent cells) contained within a sphere of radius R , for stars in yellow, dark matter in black, gas in cyan and all components in green. The maximum radius corresponds to R_{200} . The vertical dotted line represents the radius of the sphere ($0.15 \times R_{200}$) taken into account to calculate the disc centre of mass position and velocity. We set the minimum value of the y-axis equal to 220 pc, the smoothing length. Note that given the uncertainties and resolution effects, any offset of less than 1 kpc should be treated with caution (see Section 2.2).

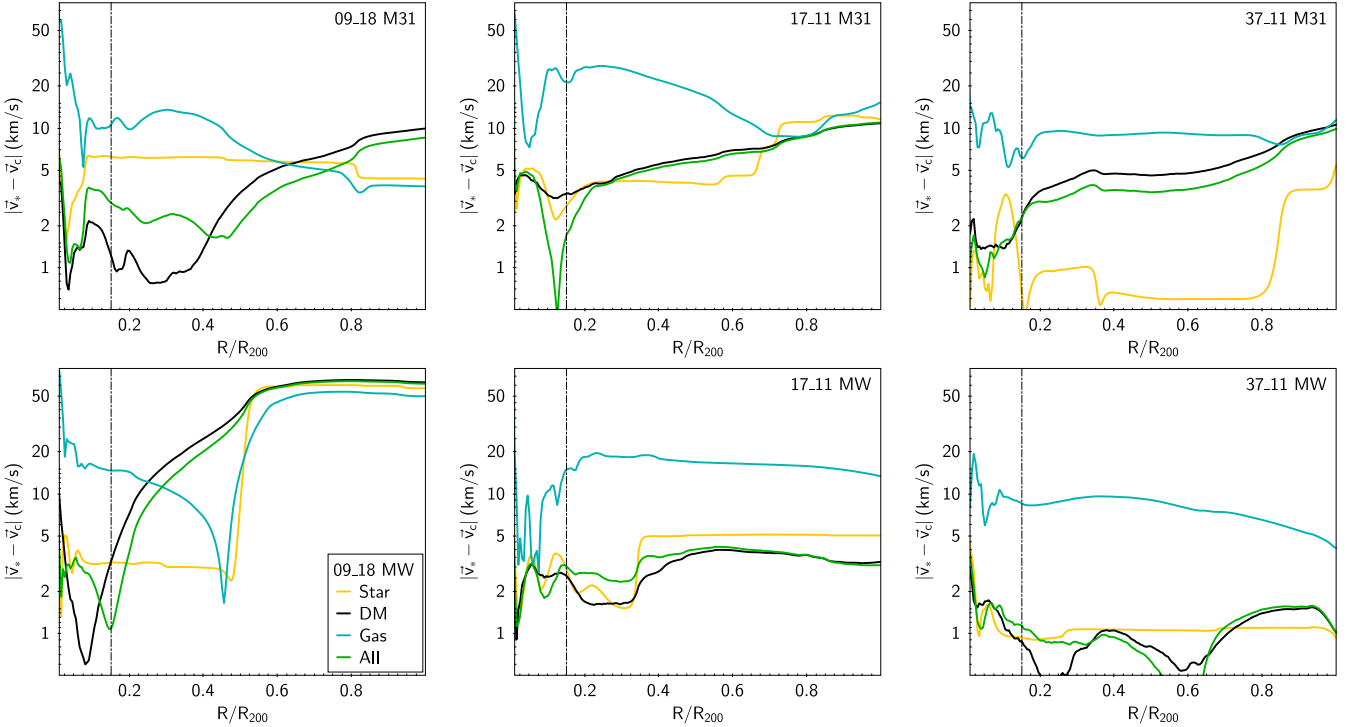


Figure 3. Same as Fig. 2 but for the absolute differences in velocity between the disc centre and the centres of mass of different types of particles (or equivalent cells). Note that given the uncertainties, any offset of less than 6 km s^{-1} should be treated with caution (see Section 2.2).

dominated by another component at any radius. Within the central part of the disc, where the gas fluctuations are most pronounced (inner 20 kpc), the gas contributes less than 20 per cent to the baryonic mass budget. When considering a broader volume, the mass of the gas is at most half the stellar mass at the disc edge. At even larger radii, when the halo is lacking stars, the gas is very diffuse, and its mass is staying below 10 per cent of the dark matter mass. The presence of satellites does not change drastically the amount of gas since they are mostly gas deficient.

Up to the galactic radius, the discrepancies in position between the different COMs and the disc, remain moderate. But beyond that, contrary to what one might expect and in most of the simulations, the larger the number of particles considered, i.e. the larger the radius, the larger the divergences between the COMs and the disc. This is in line with the results of Garavito-Camargo et al. (2021). With the help of N -body simulations of the MW and the LMC, they find no offset in the inner halo (<30 kpc) but note differences in position of up to 15 kpc at larger radii. This means that the centre of the disc and that of the whole halo do not correspond, the two points are indeed not equivalent. There is thus an actual decoupling between the central disc and the host halo. The positional offsets become substantial at R_{200} for half of our sample. The accretion history and the size of the mergers have a lot of impact on the instantaneous position at redshift 0, which can be shifted towards the outskirts of the disc or even outside of it.

However, the kinematics exhibit a slightly different behaviour. At the particle level, there are no significant differences between the velocities of the COMs and the disc velocity, which actually do not exceed the fluctuations of the velocity dispersions intrinsic to a spiral galaxy. But this is only true when there is no sizeable merger. Indeed, the observed differences can be important in the case of a prominent accretion and are, in fact, of the same order of magnitude as the observational shifts observed between the MW disc and its halo (Petersen & Peñarrubia 2021), deviations attributed to the effect of the Magellanic clouds. It is also interesting to note that even if our goal is not to recover or compare the exact configuration of the MW and the LMC, the deviations found in the 09_18 (MW) simulation are not far from those obtained using N -body simulations modelling this dipole. While we find the values (30 kpc, 66 km s^{-1}), respectively, for the deviations in position and velocity, Gómez et al. (2015) find the values (30 kpc, 75 km s^{-1}) and Petersen & Peñarrubia (2020) find a deviation in velocity of 40 km s^{-1} . We can then conclude that, in the case of a major accretion, the N -body simulations are in agreement with our cosmological simulations. This means that the impact of a massive satellite is such that it gravitationally dominates, at least at the time of its accretion, all other events, in particular the galaxy formation history and the more minor accretions. Therefore, the study of this kind of interaction is sufficiently well reproduced by the N -body simulations without the need to use cosmological simulations.

4 CENTRES OF MASS OF SUBHALOES AND SATELLITES

4.1 Subhaloes

The aim here is to examine the behaviour in the phase space of the barycentre of the host galaxy's subhaloes. Only those previously identified by AHF as gravitationally bound to the main halo and within R_{200} are considered. Depending on the mass of these subhaloes, populations are defined and studied as a single object in terms of its COM characteristics. The objective is to evaluate and

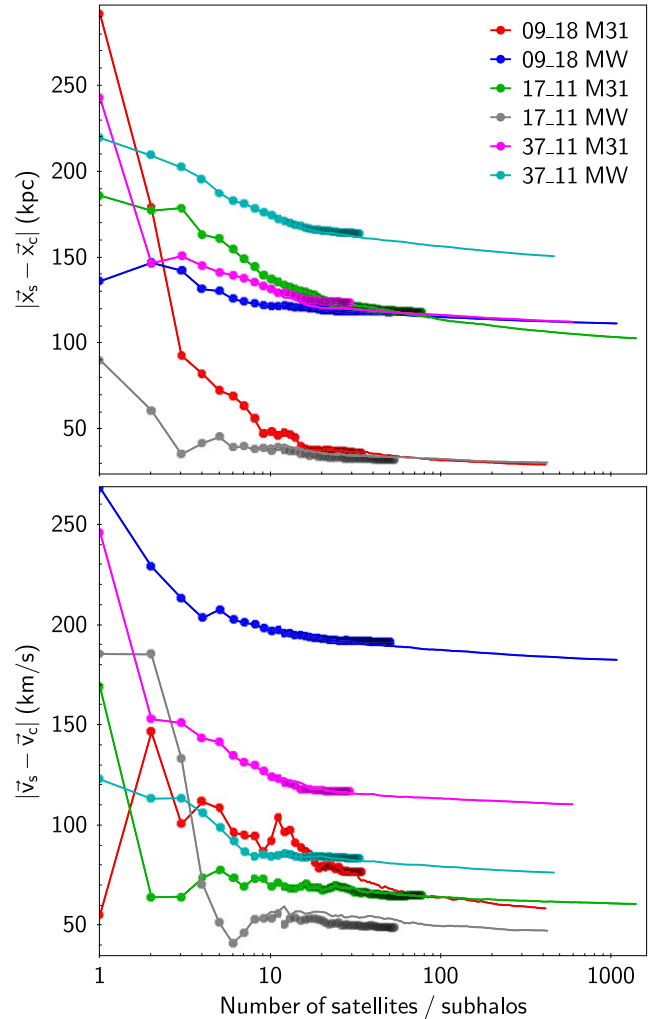


Figure 4. Absolute differences in position (upper panel) and in velocity (lower panel) between the disc centre and the centres of mass of various populations of satellites only (dots) or all subhaloes (plain lines). Those differences are given with respect to the number of most massive satellites or subhaloes taken into account. Results are colour coded according to the six host galaxies.

quantify the position and velocity shifts that may exist between the central disc and its subhalo cohort. In addition to shedding light on the equilibrium state of the system as a whole, the amplitude of these deviations will indicate whether the subhaloes are good tracers of the kinematics of their host galaxy.

For each of the six hosts, the total number of subhaloes is considered and the COM calculated. Then, smaller and smaller subhalo populations are constructed by successively removing the least massive subhalo. The position and velocity of the COM are each time compared to our reference – the COM characteristics of the central disc. The solid lines in the Fig. 4 summarizes the positional shifts (top) and velocity differences (bottom), with respect to the number of subhaloes considered. We also give in Fig. 5, the angle between the velocity orientation of the disc and that of the COM of the subhaloes in plain line with respect to the mass of the population considered. As an example, a population of five subhaloes (x -axis in Fig. 4) means that only the five most massive subhaloes of the host are considered when computing (\vec{x}_s, \vec{v}_s) . It corresponds to the fifth point from the left in Fig. 5. This figure also allows us to indicate the

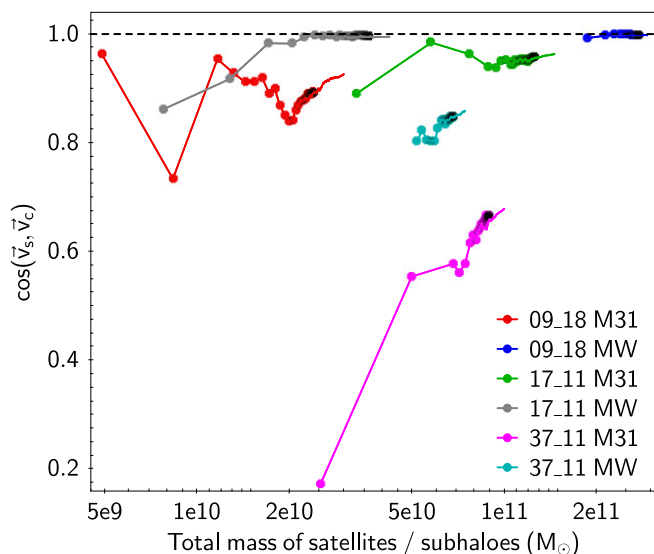


Figure 5. Deviations in orientation between the velocity vector of the disc centre and the velocity vector of the centres of mass of groups of satellites (dots) or subhaloes (plain line). The same populations as in Fig. 4 are considered. Those differences are given with respect to the total mass of the group of satellites or subhaloes taken into account. The horizontal dashed line is a visual marker to point out a complete alignment.

total mass of the subhalo populations, by looking at the x-coordinate of the right-hand end of each line.

It can first be seen that for all the simulations and for each of the parameters studied, the evolution of the shifts is similar as the number of subhaloes considered increases. After a phase where the variations are erratic when the few most massive subhaloes are used for the COM calculation, the general trends all reach a plateau fairly quickly. This asymptote, slightly decreasing for the deviations in position and velocity and slightly increasing for the cosine of the angle between the orientation of the velocity vectors, is already attained after taking into account only about a dozen subhaloes. Moreover, this behaviour neither depends on the mass of the host galaxy, nor on the total mass of the subhalo populations or even on the mass of the most massive subhaloes.

On the other hand, it is obvious that the COMs of the different subhalo populations selected do not follow the COM of the host galaxy disc. The deviations are large, heterogeneous, and non-negligible, considering, for example, the size of the disc as well as its rotation velocity. The differences in positions at the plateau cover an interval between about 30 and 150 kpc, those in velocities between 33 and 182 km s⁻¹ and in velocity vector orientation between 0° and 47°. Such deviations are an indication that the different subhalo populations, whatever the mass detection limits considered, are not in a dynamical state of relaxation with respect to their central galaxy. The magnitude of the offsets and their scattering depending on the host studied reflect the non-isotropic nature of the satellite populations. The differences are sufficiently large to explain the scattering of the results in the calculation of the MW, M31, and LG masses from the application of the virial theorem (Diaz et al. 2014; Hartl & Strigari 2022).

Looking at each galaxy separately, we can see that the three most massive host haloes, namely 17_11 (MW), 09_18 (M31), and 17_11 (M31) are the least prone to being out of phase in both position, velocity, and orientation. This could mean either that these galaxies have had time to fully accrete more substructures, or that they hold

a more homogeneous satellite population. In particular, subhaloes are at present time either blended with the central galaxy – the 17_11 (MW) and 09_18 (M31) hosts have the smallest number of identified subhaloes and the lowest subpopulation mass – or numerous and relaxed enough to have a fairly uniform phase space distribution – the 17_11 (M31) host has the largest number of identified subhaloes. This interpretation is supported by the shape of the stellar halo around the central disc (see Fig. 1), which is much extended for these three galaxies, attesting to numerous accretions.

The most decoupled galaxies in terms of position and velocity, respectively 37_11 (MW) and 09_18 (MW), both have a subpopulation gravitationally dominated by one single satellite. It thus governs the properties of the COM, notably the difference in orientation of the velocity vector. The blue and cyan curves in Fig. 5 are very tight. Nevertheless, their configuration is not identical. In the 37_11 (MW) simulation, the massive satellite is far away at the limit of the R_{200} radius. It has little impact on the central disc. This is not the case for the 09_18 (MW) simulation, where the massive satellite is closer and has already passed near the centre. It has then impacted the central disc, imparting to it a velocity aligned with its accretion direction. As a result, the orientation of the COM velocity of the subhaloes is perfectly aligned with that of the disc.

4.2 Satellites

It is now necessary to examine whether the deviations found for the subhaloes, intrinsic to the dynamics of the complexes comprising a host galaxy and its substructures up to R_{200} , are still visible and of the same amplitude when only satellites are considered. In other words, do the shifts on the satellites – which can ultimately be observed – depict correctly those of all the subhaloes?

Thus, the second main population studied is the satellites. From the whole set of subhaloes gravitationally bound to their respective hosts previously selected, only the subhaloes containing at least one stellar particle are kept. And similar exercise to the previous one is performed. For each host galaxy, the COM of the satellite population is calculated and compared to that of the central disc. Then the least massive one is removed, and the sequence is repeated until only one is retained. The satellite populations considered now are, of course, subpopulations of the previous samples.

The results of the different deviations are reported in Figs 4 and 5 as dots. The vast majority of the most massive subhaloes are systematically populated by stars and identified as satellites. As a natural consequence, the general profiles of deviations remain almost similar to those of the subhaloes. The same implications can be drawn from this. Only slight exceptions can be visible, as, for example, with the simulation 17_11 (MW), where the twelfth most massive subhalo is dark (see the difference between the twelfth grey dot from the left and the line in Fig. 4). But even in those cases, the trends continue to be identical. In the range of mass of the smallest satellites, some subhaloes can be, or are not, lightened. That is the reason why the lines in the figures can be slightly misaligned with the dots when the curves become flatter. Nevertheless, the plateau identified with the subhaloes is still similarly reached with satellites, of course with fewer objects. Thus, the position and the kinematics of the COM of the few tens of satellites are almost identical to those of several hundreds of subhaloes. The differences in position and velocity orientation between all subhaloes and satellites can only be of the order of 10 kpc and 5°, respectively, but never greater and always sporadic. The same is true for the velocity offsets, which are typically under 10 km s⁻¹. There is only one slightly more pronounced offset,

of 20 km s^{-1} for 09_18 (M31), which is one of the most massive and least perturbed hosts at $z = 0$. The total mass of its substructures is the smallest among our six simulations. Furthermore, the mass of its subhaloes is 25 per cent more than the mass of its satellites, which explains the relatively stronger influence of the dark haloes. It can therefore be noticed that the latter are cooler as they allow to lower the differences between the population of subhaloes and the disc.

It follows that the study of the populations of more than about a dozen of the most massive satellites, dominating the environment of the host galaxy, is a sufficient indicator to study the kinematics of the entire population of subhaloes. The COM properties of the satellites provide an upper limit to those of the whole substructures within the host halo. It is therefore reasonable to consider that the observational data, even with their biases and completeness problems, are sufficient to allow us to understand precisely the behaviour of the COM of the MW and M31 galaxy substructures.

5 INFLUENCE OF THE MOST MASSIVE SATELLITES

The previous sections have revealed significant differences in position and velocity between the COMs of the central galaxies and their respective satellite or subhalo populations. We have also seen that a host perturbed by a massive satellite can exhibit stronger COM shifts, the most discernible example being the simulation 09_18 (MW). In a further perspective of transposing these results to observations, one could ask whether, by selecting a subpopulation of satellites, it would be possible to contain these differences. Thus, it is now important to investigate whether these deviations from the disc centre can be induced by only a few satellites, in particular the most massive ones. In order to test this hypothesis, a scheme similar to the previous one is set-up. For each of the six hosts, all the satellites are considered, and the COM is calculated. Then, smaller and smaller populations of satellites are constructed by successively removing the most massive satellite. This test is also performed for the subhaloes. The differences between the COM of these populations and the disc, in terms of positions and velocities, are derived. The shifts are analysed statistically, taking into account the ensemble of the six hosts. The four top panels of Fig. 6 show the average evolution of the deviations of the position, velocity, velocity norm, and orientation as a function of the number of the most massive satellites or subhaloes removed. The bottom panels illustrate the relative decay of the offsets and their associated uncertainties.

Starting from the left side of the plots, where all satellites (or subhaloes) are taken into account, the deviations all tend to decrease sharply before stabilizing once the most massive objects are removed. For example, eliminating at least the five most massive satellites from the COM position calculation ensures that the maximum positional offset from the host will always be statistically below 30 kpc, which is only one third of the offset from the entire population. With the same restrictions, the velocity offset will always be under 60 km s^{-1} , representing only sixty per cent of the initial offset. The standard deviations between the six simulations on the spread of the offsets are also considerably reduced, being at most a maximum of 38 per cent of the initial standard deviation for position and 55 per cent for velocity. It can also be noticed that the differences in terms of the orientation of the velocity vectors concede only a moderate improvement of 10 per cent. This is mainly due to the fact that the velocity of the disc and that of the COM of the full population of satellites are already rather well aligned. This alignment is

even better with the subhaloes. But in addition, the confidence in this alignment increases when the bigger satellites are not taken into account since the uncertainties decrease further, by about 20 per cent.

The comparison between satellites and subhaloes is not surprising here, in line with the previous sections. Subhaloes and satellites curves present similar behaviour. Consequently, the previous results showing that the kinematics of the subhaloes are sufficiently well represented by those of the satellites remain true since all the differences with the subhaloes are included in the one sigma standard deviation of the differences with the satellites only. The non-equilibrium state of the halo is thus predominantly dominated by the few most massive satellites. The COMs of the lower mass population of satellites and subhaloes are much more consistent with that of the central disc than with the whole population. This also means that the less massive satellites are not absolutely subject to the more massive ones. And if some deviations exist for the lighter satellites, they are small enough to statistically compensate each other to some extent thanks to the better homogeneity of their distributions in the phase space. By not considering the few most massive objects, the differences in position and velocity are reduced by a factor of about three and two, respectively, as are the uncertainties. Nevertheless, the average offset in velocity of 60 km s^{-1} after removing the most massive satellites remains relatively high in absolute terms. It has been shown in the case of the MW that a massive satellite can affect almost all the other satellites, regardless of their distance (Battaglia et al. 2022). In addition, the less massive satellites, potentially accreted previously in small groups, will experience interactions between themselves. They will also evolve in a non-stationary potential and in an inhomogeneous halo (D'Souza & Bell 2022). The satellites will thus deviate from an isotropic distribution as observed for the MW (Makarov et al. 2023). The residual value of 60 km s^{-1} that we obtain is very likely a reflection of the impact of the most massive satellites on the orbits of the other satellites, coupled with the evolutionary history of each object.

6 SUMMARY AND CONCLUSION

We have studied cosmological simulations of three pairs of galaxies at redshift 0, in a configuration similar to that of the LG. They have been analysed as six independent hosts, but in a realistic MW or M31 environment. After defining the centre of mass of the disc of each galaxy, we compared the position and velocity of this reference to other centre of mass calculations.

We first studied the behaviour of the systems at the particles level to understand the physical deviations that can arise between the disc and the different components that populate the halo. The evolution of the total COM follows that of the dark matter, which itself is well traced by the stellar component. It appears that the position of the halo's COM is shifted from the disc centre by more than ten kpc for half of our sample. These deviations are important regarding the typical size of the disc of a spiral galaxy and should be taken into consideration in any related study. In the absence of a significant nearby merger at redshift zero, the velocity of the halo's COM remains close to that of the disc, with deviations of about 10 km s^{-1} , which is of the same order of magnitude as the expected velocity dispersion for a MW-like galaxy. But under the effect of a major accretion, in our case a mass ratio of one tenth at a distance of $\sim 130 \text{ kpc}$, the velocity deviation goes up to 66 km s^{-1} . It can be qualitatively compared to the recent minimum value of 32 km s^{-1} for the displacement of the MW disc with respect to its halo under the influence of the Magellanic Clouds (Petersen & Peñarrubia 2021).

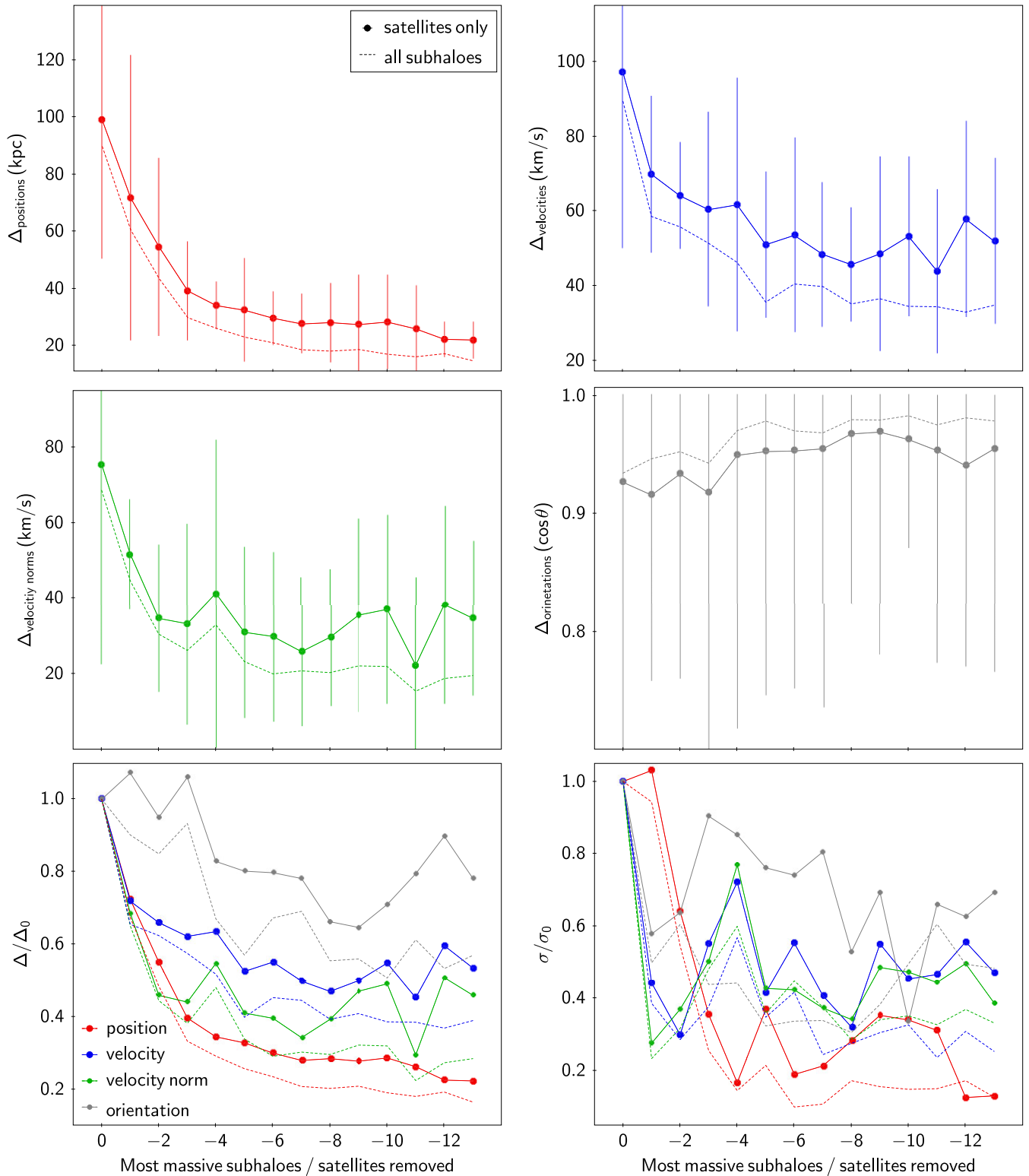


Figure 6. Averaged offsets for the six host galaxies between the COM of the central disc with that of the system of its satellites (lines and dots) or subhaloes (dashed line). The horizontal axis is graduated according to the number of the most massive satellites (or subhaloes) removed. The four top panels present the mean evolution of the differences in positions (in red), velocities (in blue), and velocity norms (in green), and velocity orientation (in grey). The uncertainties indicate the one sigma standard deviation for the satellite populations. The two lower panels summarize the relative evolution (normalized by the values when all satellites or subhaloes are considered) of the parameters investigated. The left-hand panel shows the evolution of the offsets, and the right-hand panel shows the evolution of the uncertainties.

In a second step, we studied the COM of the system of subhaloes and satellites in order to examine if they followed the dynamics of the host. No major difference is found between the subhaloes and the satellite populations. Deviations in the phase space between the host disc and the COM of subhaloes span a large range, with average values of $\overline{\Delta}_{\text{position}} = 98 \pm 47$ kpc and $\overline{\Delta}_{\text{velocity}} = 96 \pm 46$ km s⁻¹ with the whole population of objects. These values remain qualitatively the same when only half of the most massive objects are taken into account. But the COM position and velocity of smaller samples, when more less massive objects are ignored, drift further away from those of the host disc centre. On the contrary, when the few most massive satellites are ignored from the COM calculation, the latter tends to get closer to that of the disc, with approximated average values of $\overline{\Delta}_{\text{position}} \approx 30 \pm 15$ kpc and $\overline{\Delta}_{\text{velocity}} \approx 50 \pm 20$ km s⁻¹.

The goal of this study was to know what the expected 3D physical discrepancies in position and velocity of the centre of mass are between the disc of a MW-like host galaxy and its halo. A deeper understanding of the existing offsets between the different centres of a galactic complex is becoming a necessity, in particular with the *Gaia* mission (Gaia Collaboration et al. 2016), which has opened up a very favourable period for the collection of data on the proper motions of the objects surrounding the disc. One of the most fundamental parameters, whose value is intrinsically linked to the dynamical tracers used and therefore to their COMs, is the mass of the galaxy (see, e.g. Monari et al. 2018; Riley et al. 2019; Correa Magnús & Vasiliev 2022; Patel & Mandel 2022; Slizewski et al. 2022).

Several confirmations and recommendations have resulted from this work. First, at the particle scale as well as at the object scale, the stars faithfully trace the global dynamics of the studied systems, which are themselves intrinsically governed by dark matter. Secondly, significant physical misalignments in position and velocity between the host disc and the COM of the whole halo exist. Those decouplings are not systematic but can be important depending on the simulation considered and hence, on the equilibrium and evolution states of the system. The offsets tend to systematically increase as the volume studied around the host increases, from a sphere of radius equal to the size of the disc to a sphere of radius R_{200} . Thirdly, when detailed information (at the particle level) is missing as well as information on dark matter, it is nevertheless possible to get a rough idea of the degree of disruption by looking at the COM of the satellite population. For this reason, there is no real need to reach completeness in terms of the number of subhaloes. The COM derived from at least a dozen of the most massive satellites exhibits phase space properties that are close enough to those of the COM calculated with all satellites. Finally, we have been able to see that the halo disturbance is mainly driven by a few of the most massive satellites. And these do not fully dominate the individual dynamics of the other less massive objects, which mostly remain decorrelated. As a consequence, the COM of the satellite population, after subtracting the three to five most massive objects, is relatively close to the position and kinematics of the host disc. The four points summarized in this last paragraph give us the keys for a better understanding in any future analysis of the dynamics of the MW (or M31)-like satellite system with respect to the central disc of their host galaxy.

ACKNOWLEDGEMENTS

JBS would like to thank Oliver Newton for his help in handling the simulation data.

DATA AVAILABILITY

Data products used and derived in this article will be shared on reasonable request to the corresponding author.

REFERENCES

- Banik N., Widrow L. M., Dodelson S., 2017, *MNRAS*, 464, 3775
 Battaglia G., Taibi S., Thomas G. F., Fritz T. K., 2022, *A&A*, 657, A54
 Benisty D., Vasiliev E., Evans N. W., Davis A.-C., Hartl O. V., Strigari L. E., 2022, *ApJ*, 928, L5
 Chamberlain K., Price-Whelan A. M., Besla G., Cunningham E. C., Garavito-Camargo N., Peñarrubia J., Petersen M. S., 2022, *ApJ*, 942, 18
 Chequers M. H., Widrow L. M., Darling K., 2018, *MNRAS*, 480, 4244
 Conroy C., Naidu R. P., Garavito-Camargo N., Besla G., Zaritsky D., Bonaca A., Johnson B. D., 2021, *Nature*, 592, 534
 Correa Magnús L., Vasiliev E., 2022, *MNRAS*, 511, 2610
 D'Souza R., Bell E. F., 2022, *MNRAS*, 512, 739
 Debattista V. P., 2014, *MNRAS*, 443, L1
 Diaz J. D., Koposov S. E., Irwin M., Belokurov V., Evans N. W., 2014, *MNRAS*, 443, 1688
 Erkal D., Belokurov V. A., Parkin D. L., 2020, *MNRAS*, 498, 5574
 Erkal D. et al., 2021, *MNRAS*, 506, 2677
 Faure C., Siebert A., Famaey B., 2014, *MNRAS*, 440, 2564
 Gaia Collaboration et al., 2016, *A&A*, 595, A1
 Garavito-Camargo N., Besla G., Laporte C. F. P., Johnston K. V., Gómez F. A., Watkins L. L., 2019, *ApJ*, 884, 51
 Garavito-Camargo N., Besla G., Laporte C. F. P., Price-Whelan A. M., Cunningham E. C., Johnston K. V., Weinberg M., Gómez F. A., 2021, *ApJ*, 919, 109
 Gill S. P. D., Knebe A., Gibson B. K., 2004, *MNRAS*, 351, 399
 Gómez F. A., Minchev I., O'Shea B. W., Beers T. C., Bullock J. S., Purcell C. W., 2013, *MNRAS*, 429, 159
 Gómez F. A., Besla G., Carpintero D. D., Villalobos Á., O'Shea B. W., Bell E. F., 2015, *ApJ*, 802, 128
 Grand R. J. J. et al., 2017, *MNRAS*, 467, 179
 Haines T., D'Onghia E., Famaey B., Laporte C., Hernquist L., 2019, *ApJ*, 879, L15
 Hartl O. V., Strigari L. E., 2022, *MNRAS*, 511, 6193
 Khoperskov S., Di Matteo P., Gerhard O., Katz D., Haywood M., Combes F., Berczik P., Gomez A., 2019, *A&A*, 622, L6
 Knollmann S. R., Knebe A., 2009, *ApJS*, 182, 608
 Laporte C. F. P., Johnston K. V., Gómez F. A., Garavito-Camargo N., Besla G., 2018, *MNRAS*, 481, 286
 Libeskind N. I. et al., 2020, *MNRAS*, 498, 2968
 Makarov D., Khoperskov S., Makarov D., Makarova L., Libeskind N., Salomon J.-B., 2023, *MNRAS*, 521, 3540
 McMillan P. J., 2011, *MNRAS*, 414, 2446
 Monari G., Famaey B., Siebert A., Grand R. J. J., Kawata D., Boily C., 2016, *MNRAS*, 461, 3835
 Monari G. et al., 2018, *A&A*, 616, L9
 Patel E., Mandel K. S., 2022, *ApJ*, 948, 104
 Peñarrubia J., Ma Y.-Z., Walker M. G., McConnachie A., 2014, *MNRAS*, 443, 2204
 Petersen M. S., Peñarrubia J., 2020, *MNRAS*, 494, L11
 Petersen M. S., Peñarrubia J., 2021, *Nat. Astron.*, 5, 251
 Riley A. H. et al., 2019, *MNRAS*, 486, 2679
 Robin A. C., Creze M., Mohan V., 1992, *ApJ*, 400, L25
 Robin A. C. et al., 2022, *A&A*, 667, A98
 Salomon J. B., Ibata R. A., Famaey B., Martin N. F., Lewis G. F., 2016, *MNRAS*, 456, 4432
 Salomon J.-B., Bienaymé O., Reylé C., Robin A. C., Famaey B., 2020, *A&A*, 643, A75
 Salomon J. B., Ibata R., Reylé C., Famaey B., Libeskind N. I., McConnachie A. W., Hoffman Y., 2021, *MNRAS*, 507, 2592
 Slizewski A., Dufresne X., Murdoch K., Eadie G., Sanderson R., Wetzel A., Jurić M., 2022, *ApJ*, 924, 131
 Sohn S. T., Anderson J., van der Marel R. P., 2012, *ApJ*, 753, 7

Sorce J. G., Courtois H. M., Gottlöber S., Hoffman Y., Tully R. B., 2014, *MNRAS*, 437, 3586
Springel V., 2010, *MNRAS*, 401, 791
van der Marel R. P., Guhathakurta P., 2008, *ApJ*, 678, 187
van der Marel R. P., Fardal M. A., Sohn S. T., Patel E., Besla G., del Pino A., Sahlmann J., Watkins L. L., 2019, *ApJ*, 872, 24
Weinberg M. D., 1998, *MNRAS*, 299, 499

White S. D. M., 1983, *ApJ*, 274, 53
Widrow L. M., Barber J., Chequers M. H., Cheng E., 2014, *MNRAS*, 440, 1971

This paper has been typeset from a $\text{\TeX}/\text{\LaTeX}$ file prepared by the author.