



Risk Factors for Venous Thromboembolism in Severe COVID-19: A Study-Level Meta-Analysis of 21 Studies

Hervé Lobbes, Sabine Mainbourg, Vicky Mai, Marion Douplat, Steeve Provencher, Jean-Christophe Lega

► To cite this version:

Hervé Lobbes, Sabine Mainbourg, Vicky Mai, Marion Douplat, Steeve Provencher, et al.. Risk Factors for Venous Thromboembolism in Severe COVID-19: A Study-Level Meta-Analysis of 21 Studies. International Journal of Environmental Research and Public Health, 2021, 18 (24), pp.12944. 10.3390/ijerph182412944 . hal-04627780

HAL Id: hal-04627780

<https://hal.science/hal-04627780v1>

Submitted on 28 Jun 2024

HAL is a multi-disciplinary open access archive for the deposit and dissemination of scientific research documents, whether they are published or not. The documents may come from teaching and research institutions in France or abroad, or from public or private research centers.

L'archive ouverte pluridisciplinaire **HAL**, est destinée au dépôt et à la diffusion de documents scientifiques de niveau recherche, publiés ou non, émanant des établissements d'enseignement et de recherche français ou étrangers, des laboratoires publics ou privés.



Distributed under a Creative Commons Attribution 4.0 International License



Systematic Review

Risk Factors for Venous Thromboembolism in Severe COVID-19: A Study-Level Meta-Analysis of 21 Studies

Hervé Lobbes ^{1,2,*} , Sabine Mainbourg ^{3,4}, Vicky Mai ⁵, Marion Douplat ^{6,7}, Steeve Provencher ^{5,†} and Jean-Christophe Lega ^{3,4,8,†}

- ¹ Service de Médecine Interne, Hôpital Estaing, CHU de Clermont-Ferrand, 63000 Clermont-Ferrand, France
² Université Clermont Auvergne, CHU, CNRS, Clermont Auvergne INP, Institut Pascal, UMR 6602, 63000 Clermont-Ferrand, France
³ Service de Médecine Interne et Vasculaire, Hôpital Lyon Sud, Hospices Civils de Lyon, 69310 Pierre-Bénite, France; sabine.mainbourg@chu-lyon.fr (S.M.); jean-christophe.lega@chu-lyon.fr (J.-C.L.)
⁴ CNRS, Laboratoire de Biométrie et Biologie Evolutive, UMR 5558, University of Lyon, Université Lyon 1, 69100 Villeurbanne, France
⁵ Pulmonary Hypertension Research Group, Institut Universitaire de Cardiologie et de Pneumologie de Québec Research Center, Laval University, Québec, QC G1V 4G5, Canada; vicky.mai.1@ulaval.ca (V.M.); steeve.provencher@criucpq.ulaval.ca (S.P.)
⁶ Service d'Accueil des Urgences, Hospices Civils de Lyon, Hôpital Lyon-Sud, 69310 Pierre-Bénite, France; marion.douplat@chu-lyon.fr
⁷ Research on Healthcare Performance (RESHAPE), INSERM U1290, Université Lyon 1, 69373 Lyon, France
⁸ Groupe d'Etude Multidisciplinaire des Maladies Thrombotiques, Hospices Civils de Lyon, 69500 Bron, France
* Correspondence: hlobbes@chu-clermontferrand.fr; Tel.: +33-4-73-750-086; Fax: +33-4-73-750-361
† These authors contributed equally to this work.



Citation: Lobbes, H.; Mainbourg, S.; Mai, V.; Douplat, M.; Provencher, S.; Lega, J.-C. Risk Factors for Venous Thromboembolism in Severe COVID-19: A Study-Level Meta-Analysis of 21 Studies. *Int. J. Environ. Res. Public Health* **2021**, *18*, 12944. <https://doi.org/10.3390/ijerph182412944>

Academic Editor:
Cesar Fernández-de-las-Peñas

Received: 8 November 2021
Accepted: 3 December 2021
Published: 8 December 2021

Publisher's Note: MDPI stays neutral with regard to jurisdictional claims in published maps and institutional affiliations.



Copyright: © 2021 by the authors. Licensee MDPI, Basel, Switzerland. This article is an open access article distributed under the terms and conditions of the Creative Commons Attribution (CC BY) license (<https://creativecommons.org/licenses/by/4.0/>).

Abstract: Venous thromboembolism (VTE) in patients with COVID-19 in intensive care units (ICU) is frequent, but risk factors (RF) remain unidentified. In this meta-analysis (CRD42020188764) we searched for observational studies from ICUs reporting the association between VTE and RF in Medline/Embase up to 15 April 2021. Reviewers independently extracted data in duplicate and assessed the certainty of the evidence using the GRADE approach. Analyses were conducted using the random-effects model and produced a non-adjusted odds ratio (OR). We analysed 83 RF from 21 studies (5296 patients). We found moderate-certainty evidence for an association between VTE and the D-dimer peak (OR 5.83, 95%CI 3.18–10.70), and length of hospitalization (OR 7.09, 95%CI 3.41–14.73) and intubation (OR 2.61, 95%CI 1.94–3.51). We identified low-certainty evidence for an association between VTE and CRP (OR 1.83, 95% CI 1.32–2.53), D-dimer (OR 4.58, 95% CI 2.52–8.50), troponin T (OR 8.64, 95% CI 3.25–22.97), and the requirement for inotropic drugs (OR 1.67, 95% CI 1.15–2.43). Traditional VTE RF (i.e., history of cancer, previous VTE events, obesity) were not found to be associated to VTE in COVID-19. Anticoagulation was not associated with a decreased VTE risk. VTE RF in severe COVID-19 correspond to individual illness severity, and inflammatory and coagulation parameters.

Keywords: COVID-19; critical care; meta-analysis; risk factors; venous thromboembolism

1. Introduction

Severe acute respiratory syndrome coronavirus 2 (SARS-CoV-2) is responsible for an outbreak of respiratory disease called Coronavirus Infectious disease 2019 (COVID-19) [1], which is now a worldwide global burden for public health. Severe cases of COVID-19 are characterized by sepsis-related coagulopathy [2], platelet activation, and endothelial dysfunction [3]. The reported incidence of venous thromboembolic events (VTE) in COVID-19 is highly variable, suggesting that individual risk factors influence the thrombotic risk. We recently demonstrated that patients admitted to the intensive care units (ICU) had higher risk of venous thromboembolism (VTE) than patients admitted in general ward [4]

with an estimated prevalence of 23%. A recent systematic review also suggested that VTE were more frequent amongst ICU patients hospitalised for COVID-19 compared to other infections of similar severity [5].

Given the increased risk of VTE, several clinical trials evaluated the role of intermediate dose thromboprophylaxis and high dose anticoagulation [6], showing no difference in survival to hospital discharge or thrombosis prevention [7]. While the American Society of Hematology recommends the use of an early prophylactic-intensity anticoagulation for patients with severe COVID-19 with no confirmed VTE [8], high dose anticoagulation has been associated to an increase of major bleeding [9]. These results might be due to the lack of selection criteria or risk stratification for VTE at inclusion. Thus, there is a true urgency to identify risk factors for VTE in COVID-19 to help physicians with deciding the form of anticoagulant management in their current practice.

2. Materials and Methods

We followed the MOOSE (Meta-Analysis of Observational Studies in Epidemiology) guidelines; the Cochrane Prognosis Methods Group guidelines [10]; the Grading of Recommendations, Assessment, Development and Evaluation (GRADE) Working Group handbook [11]; and the PRISMA (Preferred Reporting Items for Systematic reviews and Meta-Analyses) guidelines [12] during all stages of study design, implementation, and reporting of this systematic review and meta-analysis. The protocol was recorded on PROSPERO (CRD42020188764).

2.1. Search Strategy

There was a Medline and Embase literature search from 1 January 2020 to 15 April 2021. We aimed to collect all published observational studies reporting VTE in COVID-19. We used the following keywords (including MeSH): coronavirus, severe acute respiratory syndrome coronavirus 2, novel coronavirus, nCoV, 2019-CoV, COVID-19, thrombosis, venous thromboembolism, and pulmonary embolism. The search string is available at https://www.crd.york.ac.uk/PROSPERO/display_record.php?ID=CRD42020188764 (accessed on 6 December 2021).

Additionally, we manually searched relevant articles on the websites of major medical journals (i.e., the New England Journal of Medicine, Journal of the American Medical Association, Lancet, Lancet Haematology, British Medical Journal, Blood, Journal of the American Journal of Cardiology, Circulation, Journal of Thrombosis and Haemostasis, Thrombosis and Haemostasis, and Thrombosis Research) as well as the bibliographies of each included article. We did not retain non-English papers, abstracts, and pre-print papers that were not peer-reviewed.

2.2. Study Selection

The inclusion criteria were: (i) cohort studies of at least 10 patients in ICU, (ii) patients with positive reverse transcriptase polymerase chain reaction COVID-19 sample or with suggestive radiologic findings on computed chest tomography, (iii) available rate of documented VTE as defined by the investigators, and (iv) available rate of exposures as tested by investigators, including:

- Demographic characteristics: age, male sex;
- Patient history factors: body-mass-index (BMI) and obesity ($\text{BMI} \geq 30 \text{ kg}\cdot\text{m}^{-2}$), alcohol and tobacco use, history of cancer, history of previous VTE, several medical conditions (including cardiac disease, cerebrovascular disease, chronic kidney disease, chronic liver disease, chronic lung disease, diabetes mellitus, immunodeficiency, human immunodeficiency virus (HIV) infection, hypertension and use of angiotensin convertor enzyme (ACE) inhibitors);
- Therapeutic management and disease severity markers: Acute Physiology and Chronic Health Evaluation II (APACHE II), Simplified Acute Physiology Score II (SAPS-II), Sepsis-related Organ Failure Assessment score (SOFA), Therapeutic Intervention Scor-

ing Systemc-10 (TISS-10), arterial oxygen partial pressure/fractional inspired oxygen (PaO₂/FiO₂), requirement and duration of use of neuromuscular blockers and inotropic drugs, length of hospital stay and disease duration, acute kidney injury and requirement for renal replacement therapy, myocarditis, requirement for extracorporeal membrane oxygenation (ECMO), use of anticoagulant treatment (including prophylactic, intermediate and therapeutic dosage);

- Inflammation biomarkers: C-reactive protein (CRP), ferritin, fibrinogen, interleukin-6 (IL-6) and procalcitonin.
- Coagulation tests: activated partial thromboplastin time (APTT), D-dimers, Prothrombin Time (PT), score for disseminated intravascular coagulation (DIC) from the International Society on Thrombosis and Haemostasis (ISTH);
- Haematological parameters: complete blood count (including: leukocytes, lymphocytes, neutrophils, haemoglobin, and platelets);
- Biological markers of organ dysfunction: alanine aminotransferase (ALT), aspartate aminotransferase (AST), creatine kinase serum level, creatinine level, lactate dehydrogenase (LDH), N-terminal pro-brain natriuretic peptide (NT-proBNP), troponin T, and troponin I level.

Two reviewers (H. L. and J.-C. L.) independently applied these criteria to the titles and abstracts of all citations obtained. If pertinent, each reviewer retrieved and explored the complete articles to make a final decision about their inclusion in the meta-analysis. In case of disagreement, a third reviewer (S. M.) was consulted to reach a consensus. Throughout this process, reviewers were blinded to author and journal names. In case of cohorts reported in multiple papers, the analysis was limited to the largest cohort, unless the necessary data had appeared only in another paper. A log of reasons for rejection of citations identified from the searches was kept. In case of doubt or apparent inconsistency, a reviewer (H. L.) would contact the corresponding author to remove any ambiguity.

2.3. Quality Assessment

The quality and risk of bias were assessed using the Quality In Prognostic Studies (QUIPS) tool as recommended by the Cochrane Prognosis Methods [10]. Two reviewers (H.L. and J.-C.L.) independently evaluated the risk of bias for each item. If needed, a discussion was planned to reach a consensus. Risk of publication bias was additionally assessed visually using funnel plots and an Egger's test (using a threshold at $p < 0.05$). We assumed that the effect of publication bias should be minor if the plot of the magnitude of the effect size in each study versus its precision estimate (i.e., standard error) showed a roughly symmetrical funnel shape (if number of studies >10).

2.4. Outcomes

The main outcomes were VTE, as defined by the investigators, including deep vein thrombosis (DVT) or pulmonary embolism (PE). We investigated all the prognostic factors tested in individual studies, including the clinical characteristics, biological testing, disease severity markers, and the drug or procedure exposures.

2.5. Statistical Analysis

We standardized the units of measurement for each prognostic factor, unifying the direction of the predictors, adjusting the weights of the studies, and calculating crude-effect estimates when not provided. When possible, we performed meta-analysis of all the risk factors to assess their association with VTE occurrence, when reported by more than one study. For a dichotomous outcome, we presented the effect estimate as an OR and the corresponding 95% confidence interval (CI). We conducted a meta-analysis of associations using the generic inverse variance-based method and random-effects model to produce an overall measure of association. For a continuous outcome, we estimated the standardized mean difference. The standardized mean difference was re-expressed as an OR using the method of Chinn et al. [13]. The mean and standard variance were estimated from the

medians, and the sample size if needed [14]. A sensitivity analysis was performed using the Bonferroni correction to control the type 1 error (i.e., false positive results related to multiple statistical tests). We explored the consistency of the associations between the results of our meta-analysis. All analyses were performed with R (R Foundation for Statistical Computing, Vienna, Austria).

2.6. Role of the Funding Source

No funding was received to perform this meta-analysis. All authors had full access to all the data and the final responsibility to submit for publication. The authors declare no conflict of interest related to this study.

2.7. Data Availability

All data relevant to the study are included in the article; raw data will be made available upon reasonable request.

3. Results

This section may be divided by subheadings. It should provide a concise and precise description of the experimental results and their interpretation, as well as the experimental conclusions that can be drawn.

3.1. Literature Search and Study Characteristics

A total of 5690 articles were retrieved using the search terms. After reviewing titles and abstracts, 75 articles were selected for full text eligibility. Overall, 12 retrospective and 9 prospective studies (5296 patients) [15–35] were included in the meta-analysis (Figure 1).

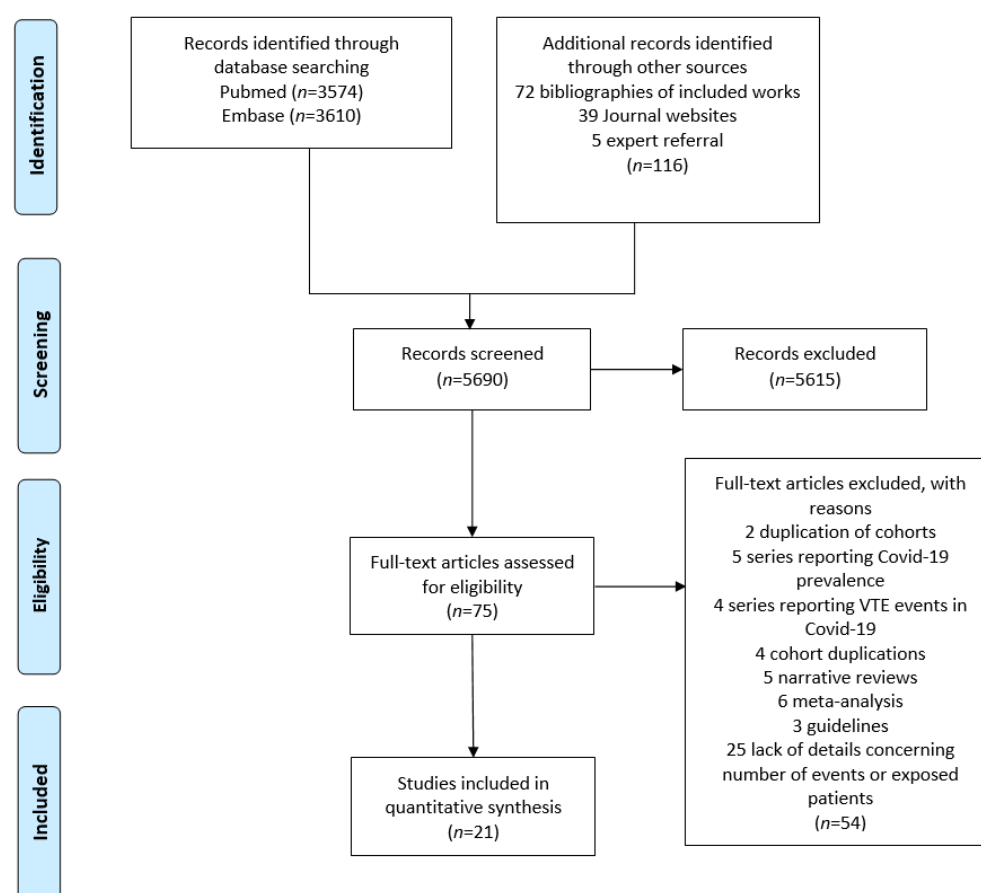


Figure 1. Flow diagram of the literature search and study inclusion.

The main characteristics of the included studies are described in Table 1.

Table 1. Main characteristics of included studies.

Study	Country	Nb	FU	Design	Diagnostic of COVID-19	Male%	Mean Age (y)	Diagnosis of VTE	Type of VTE Event	VTE Rate	Data Collection
Al-Samkari [15]	USA	3239	27	P, C, M	RT-PCR	64.5%	61	NA	DVT, PE	6%	ICU admission
Bellmunt-Montoya [16]	Spain	227	7	P, NC, M	RT-PCR	77%	62	AS	DVT, PE	26.5%	ICU admission
Contou [17]	France	26	NA	R, NC, m	RT-PCR	79%	61	ST	PE	62%	Day of CTPA
Cui [18]	China	81	14	R, NA, m	RT-PCR and CT-scan	46%	60	AS	DVT, PE	25%	NA
Desborough [19]	UK	66	28	R, C, m	Antigen test	73%	59	ST	DVT, PE	15%	ICU admission
Dujardin [20]	Netherlands	127	NA	R, C, m	RT-PCR	77%	62	AS	DVT, PE	41%	ICU admission
Fraissé [21]	France	92	NA	R, C, m	NA	79%	61	ST	DVT, PE	40%	ICU admission
Gibson [22]	USA	72	NA	P, NA, m	RT-PCR	79%	64	AS	DVT	17%	Hospital admission
Grandmaison [23]	Switzerland	29	NA	P, NC, m	RT-PCR	62%	66	AS (DVT) and ST (PE)	DVT, PE	59%	NA
Helms [24]	France	179	80	P, C, M	RT-PCR	73%	62	ST	DVT, PE	32%	NA
Hippensteel [25]	USA	91	26	R, NC, m	NA	58%	56	ST	DVT, PE	26%	Hospital admission
Maatman [26]	USA	109	NA	R, C, M	RT-PCR	62%	61	ST	DVT, PE	16%	NA
Mirsadraee [27]	UK	72	32	R, C, m	RT-PCR	74%	52	ST	DVT, PE	58%	NA
Mueller-Peltzer [28]	Germany	16	23	R, NC, m	RT-PCR	73%	60	AS	PE	45%	Mixed
Nahum [29]	France	34	NA	P, C, m	RT-PCR and CT-scan	78%	62	AS	DVT	79%	NA
Shah [30]	UK	187	20	R, C, M	RT-PCR and CT-scan	68%	57	ST	DVT, PE	35%	< 48 h ICU admission
Soumagne [31]	France, Belgium	375	28	NA, C, M	RT-PCR	77%	62	ST	PE	36%	NA
Torres-Machorro [32]	Mexico	30	<9	P, C, m	NA	77%	62	AS	DVT	30%	NA
Trigonis [33]	USA	45	NA	R, NC, m	NA	NA	61	ST	DVT	42%	VTE screening
Voicu [34]	France	56	10	P, C, m	NA	75%	NA	AS	DVT	46%	NA
Zhang [35]	China	143	19	R, C, m	RT-PCR	51%	63	AS	DVT, PE	46%%	NA

AS: asymptomatic screening; C: consecutive, CTPA: computed tomography pulmonary angiogram; CT-scan: computed tomography scanner; DVT: deep vein thrombosis; FU: mean follow-up (days); ICU: intensive care unit; M: multicentric; m: monocentric; NA: Not assessable; Nb: number of patients; NC: non-consecutive; P: prospective; PE: pulmonary embolism; R: retrospective; RT-PCR: reverse transcriptase-polymerase chain reaction; ST: symptomatic testing; UK: United Kingdom; USA: United States of America; VTE: venous thromboembolism; y: year.

Risk factors for PE ($n = 3$), DVT ($n = 5$), or both ($n = 13$) were assessed. In 10 studies, VTE incidence was evaluated as routine care, whereas in 11 studies VTE was evaluated only in case of clinical suspicion. The median number of patients was 81 (range 16–3239). The median follow-up duration was 23 days (range 14–28). The included studies took place in France ($n = 6$), the United States of America ($n = 5$), the United Kingdom ($n = 3$), China ($n = 2$), and other various counties ($n = 5$). Six studies were multicentric.

3.2. Risk of Bias

As shown in Table 2, a serious risk of bias was present in all selected studies, with a moderate–high risk of bias in at least one of the six domains of the QUIPS tool. The risk of confounding factors was also considered as moderate–high for all studies.

Conversely, the visual inspection of the funnel plot and the Egger’s regression ($p > 0.05$) test were not in favour of publication bias for the variables reported in >10 studies (Supplementary Material Figures S1–S6).

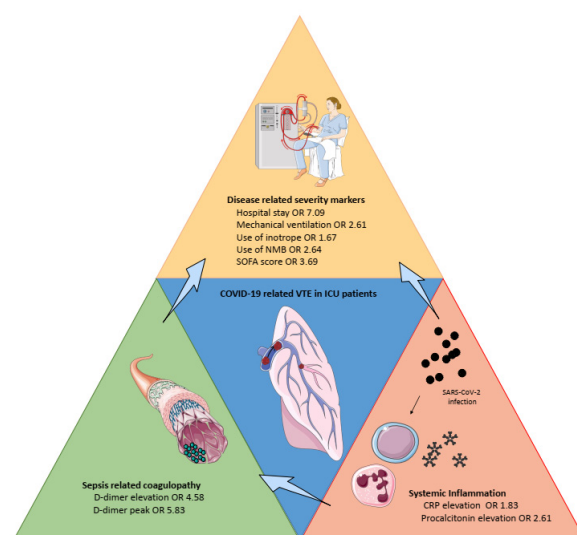
3.3. Identification of Risk Factors for VTE

Figure 2 summarizes the main risk factors identified in the present work.

Table 2. Risk of bias assessment using QUIPS tool.

Study	Study Participation	Study Attrition	Prognostic Factor Measurement	Outcome Measurement	Study Confounding	Statistical Analysis and Reporting
Al-Samkari [15]						
Bellmunt-Montoya [16]						
Contou [17]						
Cui [18]						
Desborough [19]						
Dujardin [20]						
Fraissé [21]						
Gibson [22]						
Grandmaison [23]						
Helms [24]						
Hippensteel [25]						
Maatman [26]						
Mirsadraee [27]						
Mueller-Peltzer [28]						
Nahum [29]						
Shah [30]						
Soumagne [31]						
Torres-Machorro [32]						
Trigoni [33]						
Voicu [34]						
Zhang [35]						

Green indicates low risk of bias; red indicates high risk of bias; yellow indicates moderate risk of bias.

**Figure 2.** Overview of the main risk factors for venous thromboembolism in severe COVID-19. CRP: C-reactive protein, ICU: intensive care unit, NMB: neuromuscular blockade, SOFA: Sepsis-related Organ Failure Assessment.

3.3.1. Demographic and Past History Factors

We found no association between the risk of VTE and age [15,17–21,23,25–33,35], male sex [15,17,19–23,25–32,35], body mass index (OR 1.04, 95% CI 0.85–1.25) [15,17,19–21,23,25,27–29,31–33] or obesity (OR 1.41, 95% CI 0.64–3.09) [17,27,28,32], history of previous VTE (OR 0.90, 95% CI 0.27–2.98) [17,19,21,23,35], cancer (0.84, 95% CI 0.51–1.38) [15,17,19,23,25,29,31,35], and tobacco consumption [15,25–28,35].

Furthermore, we found no association between numerous medical conditions and risk of VTE, including cerebrovascular disease [21,35], chronic kidney disease [15,19,21,25,26,28,31,35], chronic respiratory disease—including asthma and COPD [15,19,21,25,26,28,29], diabetes mellitus [15,17,19,21,25–29,31,32,35], hypertension [15,17,19,21,26–29,32,35], immunodeficiency [15,25,28], and use of ACE inhibitors [19,29].

Conversely, we identified low-certainty evidence for an association between a decreased risk of any VTE and history of cardiovascular disease (OR 0.32, 95% CI 0.10–0.99) [15,17,19,21,25,29,31,32,35], and congestive heart failure (OR 0.57, 95% CI 0.35–0.95) [15,26,28,31].

3.3.2. Therapeutic Management and Disease Severity

We identified an association between VTE risk and requirement for intubation [15,19–21,25,29,31] (OR 2.61, 95% CI 1.94–3.51), duration of neuromuscular blockade [31] (OR 2.64, 95% CI 1.57–4.47) with moderate-certainty evidence, and low-certainty evidence for an association between VTE risk and the use of inotropic drugs (OR 1.67, 95% CI 1.15–2.43, low-certainty evidence) [15,17,19–21,25,29].

The requirements for ECMO [19,27–29,31], the PaO₂/FiO₂ ratio [17,20,23,31], the duration of mechanical ventilation [23,25], and renal replacement therapy [15,17,19,21,31] were not found to be associated with the risk of VTE with low-certainty evidence. The SOFA score [17,21,23] was associated to VTE risk (OR 3.69, 95% CI 1.22–11.2, low-certainty evidence) when the score was established the day of VTE screening (single study). APACHE-II was associated with the risk of VTE in a single study [30] (OR 1.76, 95% CI 1.04–3.00, very low-certainty evidence).

We found no association between the use of anticoagulation regardless of the dosage used and risk of VTE [16,21,23,24,28,30,32] with low-certainty evidence. We identified moderate-certainty evidence for an association between VTE risk and the length of stay in hospitalization (OR 7.09, 95% CI 3.41–14.73) [19,25], whereas the disease duration before hospitalization [19,26,35], the disease duration before admission to the intensive care units [17,26], the length of stay in the intensive care unit [19,28,30], or the disease duration before VTE screening [17,23] were not found to be associated with the risk for VTE. In contrast, we identified low-certainty evidence for an association between the time from intensive care unit (ICU) admission to VTE screening [17,33] with a decreased risk of VTE (OR 0.29, 95% CI 0.12–0.70).

3.3.3. Inflammation Biomarkers

We identified low-certainty evidence for an association between VTE risk and CRP [15,19,20,22,23,25–27,29,30,32,35] (OR 1.83, 95% CI 1.32–2.53) and procalcitonin levels [15,19,26,35] (OR 2.61, 95% CI 1.05–6.36). Furthermore, we found an association between IL-6 levels and the risk of VTE (OR 0.58 95% CI 0.37–0.97) with low-certainty evidence [15,22,26]. Conversely, we found no association between the risk of VTE and the fibrinogen [15,17,19–23,26–30,34] nor ferritin levels [15,19,23,26,27,30,32].

3.3.4. Coagulation Tests

We found moderate to low-certainty evidence for an association between VTE and the D-dimer levels (OR 4.58, 95% CI 2.52–8.50, low-certainty evidence) [15,17–23,25–30,32,34,35], D-dimer peak (OR 5.83, 95% CI 3.18–10.7, moderate-certainty evidence) [26,32,33], and D-dimer at VTE screening (OR 5.14, 95% CI 1.95–13.6, low-certainty evidence) [28,33]. We found no evidence for the PT value [18,20,27,30,32,35], PT percentage [21,29], APTT value [18,20,27,32,35], and APTT ratio [19,29].

3.3.5. Haematological Parameters

In a single study, an association was found between the platelets peak count and a decreased risk of VTE with low certainty-evidence (OR 0.25, 95% CI 0.12–0.55). We found no association between the risk of VTE and the haemoglobin levels [15,18,19,25–27,30,35], leukocytes count [15,18,19,25–27,29,30,35], lymphocytes count [18,25,27,29,30,35], and platelets count [15,17–21,23,25–27,29,30,35].

3.3.6. Biological Markers of Organ Dysfunction

We found no association between VTE and the creatinine levels [22,25–27,29,35], hepatic enzymes levels [25–27,35], creatine kinase levels [27], lactate dehydrogenase levels [23,25–27,30,32,35], and N-terminal pro-brain natriuretic peptide levels [27,29]. Low-certainty evidence was found with troponin T [26] (OR 8.64, 95% CI 3.25–22.97) in a single study, whereas no evidence was found for troponin I [27,30,35].

Levels of evidence and the estimated OR are summarized in Tables 3 and 4.

Table 3. Evidence summary for risk factors related to venous thromboembolism (continuous variables).

Variable	Certainty Assessment Domains							Overall Certainty	SMD 95%CI	OR 95%CI
	N	Study Design	Risk of Bias	Indirectness	Inconsistency	Imprecision	Publication Bias			
Demographic factors										
Age	17	Obs	S *	NS	S	S	Undetect	⊕○○○	0.11 (−0.09; 0.30)	1.22 (0.85; 1.72)
BMI	13	Obs	S *	NS	NS	NS	Undetect	⊕⊕⊕○	0.02 (−0.08–0.12)	1.04 (0.86–1.25)
Biological markers of organ dysfunction										
ALAT	4	Obs	S *	NS	S	S	Undetect	⊕○○○	0.24 (−0.07; 0.56)	1.55 (0.87; 2.75)
ASAT	3	Obs	S *	NS	S	S	Undetect	⊕⊕○○	0.25 (−0.09; 0.60)	1.59 (0.85; 2.97)
Creatinine	6	Obs	S *	NS	S	NS	Undetect	⊕⊕○○	−0.08 (−0.39; 0.24)	0.87 (0.49; 1.54)
Creatine kinase	1	Obs	S *	NS	NS	S	Undetect	⊕○○○	−0.25 (−0.73–0.23)	0.64 (0.27–1.53)
LDH	6	Obs	S *	NS	S	S	Undetect	⊕⊕○○	0.44 (−0.03; 0.91)	2.23 (0.95; 5.19)
LDH (peak)	1	Obs	S *	NS	NS	S	Undetect	⊕⊕○○	0.15 (−0.3–0.6)	1.32 (0.58–2.95)
NT-proBNP	2	Obs	S *	NS	NS	S	Undetect	⊕⊕○○	−0.06 (−0.66–0.54)	0.90 (0.30–2.64)
Troponin I	3	Obs	S *	NS	S	S	Undetected	⊕○○○	0.94 (−0.10; 1.98)	5.49 (0.83; 36.28)
Troponin T	1	Obs	S *	NS	NS	S	Detected	⊕⊕○○	1.19 (0.65; 1.73)	8.64 (3.25; 22.97)
Scores										
APACHEII	1	Obs	S *	NS	NS	S	Detected	⊕○○○	0.31 (0.02; 0.61)	1.76 (1.04; 3.00)
DIC ISTH	1	Obs	S *	NS	NS	S	Detected	⊕○○○	0.44 (0.15; 0.73)	2.23 (1.31; 3.79)
SAPSII	3	Obs	S *	NS	NS	S	Undetect	⊕⊕○○	0.13 (−0.22; 0.48)	1.27 (0.68; 2.37)
SOFA	3	Obs	S *	NS	S	S	Undetect	⊕○○○	0.24 (−0.3–0.79)	1.55 (0.58–4.17)
SOFA at VTE screening	1	Obs	S *	NS	NS	S	Detected	⊕⊕○○	0.72 (0.11–1.33)	3.69 (1.22–11.2)

Table 3. Cont.

Variable	Certainty Assessment Domains							Overall Certainty	SMD 95%CI	OR 95%CI
	N	Study Design	Risk of Bias	Indirectness	Inconsistency	Imprecision	Publication Bias			
Scores										
SOFA at intubation	1	Obs	S *	NS	NS	S	Undetect	⊕⊕○○	0.33 (−0.26–0.93)	1.83 (0.62–5.4)
TISS 10	1	Obs	S *	NS	NS	S	Undetect	⊕⊕○○	−0.66 (−1.68; 0.36)	0.30 (0.05–1.93)
Coagulation markers										
aPTT ratio	2	Obs	S *	NS	S	S	Detected	⊕○○○	0.27 (−4.07; 4.60)	1.63 (0.00; 2.76)
aPTT	5	Obs	S *	NS	NS	S	Undetect	⊕⊕○○	0.23 (−0.15–0.60)	1.5 (0.76–2.99)
PT (absolute)	6	Obs	S *	NS	S	S	Undetect	⊕○○○	0.06 (−0.34; 0.45)	1.11 (0.54; 2.27)
PT (%)	2	Obs	S *	NS	S	S	Undetect	⊕○○○	−0.11 (−1.35; 1.13)	0.82 (0.09; 7.69)
D-Dimer	17	Obs	S *	NS	S	NS	Undetect	⊕⊕○○	0.84 (0.51; 1.18)	4.58 (2.52; 8.50)
D-Dimer (peak)	3	Obs	S *	NS	NS	NS	Undetec	⊕⊕⊕○	0.97 (0.64; 1.31)	5.83 (3.18; 10.7)
D-Dimer at VTE screening	2	Obs	S *	NS	NS	S	Undetec	⊕⊕○○	0.90 (0.37; 1.44)	5.14 (1.95; 13.6)
Inflammation makers										
CRP	12	Obs	S *	NS	S	NS	Undetect	⊕⊕○○	0.32 (0.14–0.51)	1.83 (1.32–2.53)
CRP (peak)	1	Obs	S *	NS	NS	S	Undetect	⊕⊕○○	−0.01 (−0.46; 0.43)	0.98 (0.44; 2.17)
Ferritin	7	Obs	S *	NS	S	S	Detected	⊕○○○	0.35 (−0.30; 1.00)	1.89 (0.58; 6.13)
Ferritin (peak)	1	Obs	S *	NS	NS	S	Undetect	⊕⊕○○	0.00 (−0.45–0.45)	0.99 (0.44–2.25)
Fg	13	Obs	S *	NS	NS	S	Undetected	⊕⊕○○	−0.02 (−0.16; 0.19)	0.96 (0.75–1.41)
Fg (peak)	1	Obs	S *	NS	NS	S	Undetected	⊕⊕○○	−0.23 (−0.73–0.27)	0.66 (0.26–1.63)
IL–6	3	Obs	S *	NS	NS	S	Undetect	⊕⊕○○	−0.28 (−0.55; −0.02)	0.58 (0.37; 0.97)

Table 3. Cont.

Variable	Certainty Assessment Domains							Overall Certainty	SMD 95%CI	OR 95%CI
	N	Study Design	Risk of Bias	Indirectness	Inconsistency	Imprecision	Publication Bias			
Inflammation makers										
PCT	4	Obs	S *	NS	S	S	Undetect	⊕○○○	0.53 (0.03; 1.02)	2.61 (1.05; 6.36)
PCT (peak)	1	Obs	S *	NS	NS	S	Undetect	⊕⊕○○	0.41 (−0.0; 0.87)	2.08 (0.89; 4.87)
Haematological parameters										
Haemoglobin	8	Obs	S *	NS	NS	S	Undetect	⊕⊕○○	0.02 (−0.10; 0.13)	1.03 (0.83–1.27)
Leukocytes	9	Obs	S *	NS	S	S	Undetect	⊕⊕○○	0.34 (−0.03; 0.7)	1.84 (0.94; 3.59)
Lymphocytes	6	Obs	S *	NS	S	S	Detected	⊕○○○	−0.23 (−0.52; 0.06)	0.66 (0.39; 1.11)
Neutro/lympho ratio	3	Obs	S *	NS	S	NS	Detected	⊕○○○	−0.31 (−1.64; 1.02)	0.57 (0.05; 6.38)
Platelets	13	Obs	S *	NS	NS	NS	Undetect	⊕⊕⊕○	0.04 (−0.07; 0.15)	1.08 (0.88; 1.32)
Platelets (peak)	1	Obs	S *	NS	NS	S	Detected	⊕⊕○○	−0.76 (−1.19; −0.33)	0.25 (0.12; 0.55)
Disease severity markers										
NMB duration	1	Obs	S *	NS	NS	NS	Detected	⊕⊕○○	0.54 (0.25–0.83)	2.64 (1.57–4.47)
PaO2/FiO2	4	Obs	S *	NS	NS	S	Undetect	⊕⊕○○	−0.13 (−0.41; 0.15)	0.79 (0.48; 1.31)
Time factors										
Disease onset to hospitalization	2	Obs	S *	NS	NS	S	Undetect	⊕⊕○○	0.09 (−0.27–0.44)	1.18 (0.62–2.23)
Disease onset to ICU	2	Obs	S *	NS	NS	S	Undetect	⊕⊕○○	−0.20 (−0.57; 0.17)	0.70 (0.36; 1.36)
Time to VTE screening	2	Obs	S *	NS	S	S	Undetect	⊕○○○	−0.05 (−0.83; 0.72)	0.91 (0.22; 3.71)
VTE screening in ICU	2	Obs	S *	NS	NS	S	Detected	⊕⊕○○	−0.68 (−1.17; −0.19)	0.29 (0.12; 0.70)
Hospital stay duration	2	Obs	S *	NS	NS	NS	Undetect	⊕⊕⊕○	1.08 (0.68–1.48)	7.09 (3.41–14.73)

Table 3. Cont.

Variable	Certainty Assessment Domains							Overall Certainty	SMD 95%CI	OR 95%CI
	N	Study Design	Risk of Bias	Indirectness	Inconsistency	Imprecision	Publication Bias			
Time factors										
MV duration	2	Obs	S *	NS	NS	S	Undetect	⊕⊕○○	0.39 (−0.06; 0.84)	2.02 (0.90; 4.55)
ICU stay duration	3	Obs	S *	NS	S	S	Detected	⊕○○○	0.21 (−0.78; 1.20)	1.46 (0.24; 8.81)

ALAT: alanine aminotransferase; APACHE: Acute Physiology And Chronic Health Evaluation; APTT: activated partial thromboplastin time; ASAT: aspartate aminotransferase; BMI: body mass index; CRP: C reactive protein; DIC-ISTH: Disseminated Intravascular Coagulation from the International Society on Thrombosis and Haemostasis; ICU: intensive care unit; IL-6: interleukin 6; LDH: lactate dehydrogenase; MV: mechanical ventilation; N: number of studies; NS: not serious; NT-proBNP: N-terminal pro-brain natriuretic peptide; PaO₂/FiO₂: arterial oxygen partial pressure/fractional inspired oxygen; PT: prothrombin time; S: serious; SAPSII: Simplified Acute Physiology Score II; SOFA: Sepsis-related Organ Failure Assessment; TISS10: Therapeutic Intervention Scoring System; Undetec: undetected; VTE: venous thromboembolism; 95% CI: confidence interval 95%; OR: odds ratio; SMD: standardized mean difference; * Certainty in evidence was downgraded for risk of bias, given that confounders were not excluded. ⊕○○○ indicates very low certainty-evidence, ⊕⊕○○ indicates low-certainty evidence, ⊕⊕⊕○ indicates moderate-certainty evidence.

Table 4. Evidence summary for prognostic factors related to venous thromboembolism (discrete variables).

Variable	Certainty Assessment Domains							Overall Certainty	OR 95%CI
	N	Study Design	Risk of Bias	Indirectness	Inconsistency	Imprecision	Publication Bias		
Medical history									
Asthma	2	Obs	S *	NS	NS	S	Undetected	⦿⦿○○	0.95 (0.62–1.47)
ACE inhibitor use	2	Obs	S *	NS	NS	S	Undetected	⦿⦿○○	0.67 (0.19–2.33)
Alcohol use	1	Obs	S *	NS	NS	S	Undetected	⦿⦿○○	0.47 (0.14–1.55)
Cancer	8	Obs	S *	NS	NS	S	Undetected	⦿⦿○○	0.84 (0.51–1.38)
Cardiovascular disease	2	Obs	S *	NS	NS	S	Undetected	⦿⦿○○	0.32 (0.10–0.99)
Cerebrovascular disease	2	Obs	S *	NS	NS	S	Undetected	⦿⦿○○	0.84 (0.26–2.65)
Chronic kidney disease	8	Obs	S *	NS	NS	S	Undetected	⦿⦿○○	0.73 (0.50–1.06)
Chronic respiratory disease	7	Obs	S *	NS	NS	S	Undetected	⦿⦿○○	0.76 (0.47–1.23)
COPD	3	Obs	S *	NS	NS	S	Undetected	⦿○○○	0.42 (0.11–1.61)

Table 4. Cont.

Variable	Certainty Assessment Domains							Overall Certainty	OR 95%CI
	N	Study Design	Risk of Bias	Indirectness	Inconsistency	Imprecision	Publication Bias		
Medical history									
Congestive heart failure	4	Obs	S *	NS	NS	S	Undetected	⊗⊗○○	0.57 (0.35–0.95)
Coronary artery disease	5	Obs	S *	NS	NS	S	Undetected	⊗⊗○○	1.00 (0.56–1.77)
Diabetes mellitus	8	Obs	S *	NS	NS	S	Undetected	⊗⊗○○	0.76 (0.52–1.11)
HIV	1	Obs	S *	NS	NS	S	Undetected	⊗⊗○○	1.75 (0.68–4.46)
Hypertension	10	Obs	S *	NS	NS	S	Undetected	⊗⊗○○	0.85 (0.64–1.11)
Immunodeficiency	3	Obs	S *	NS	NS	S	Undetected	⊗⊗○○	1.24 (0.56–2.73)
Myocarditis	1	Obs	S *	NS	NS	S	Undetected	⊗⊗○○	1.95 (0.50–7.57)
Previous VTE	5	Obs	S *	NS	NS	S	Undetected	⊗⊗○○	0.90 (0.27–2.98)
Smoker (past or current)	3	Obs	S *	NS	NS	S	Undetected	⊗⊗○○	0.96 (0.60–1.52)
Smoker (current)	2	Obs	S *	NS	NS	S	Undetected	⊗⊗○○	0.67 (0.16–2.83)
Smoker (past)	1	Obs	S *	NS	NS	S	Undetected	⊗⊗○○	0.92 (0.26–3.17)
Disease severity markers and therapeutic management									
Acute kidney injury	1	Obs	S *	NS	NS	S	Undetected	⊗⊗○○	1.73 (0.44–6.81)
ECMO	5	Obs	S *	NS	NS	S	Undetected	⊗⊗○○	0.95 (0.46–1.97)
Inotrope use	7	Obs	S *	NS	NS	S	Undetected	⊗⊗○○	1.67 (1.15–2.43)
Mechanical ventilation	7	Obs	S *	NS	NS	NS	Undetected	⊗⊗⊗○	2.61 (1.94–3.51)
Neuromuscular blockers	2	Obs	S *	NS	NS	S	Undetected	⊗⊗○○	1.41 (0.64–3.09)
Renal replacement	5	Obs	S *	NS	NS	S	Undetected	⊗⊗○○	1.39 (0.93–2.10)

Table 4. Cont.

Variable	Certainty Assessment Domains							Overall Certainty	OR 95%CI
	N	Study Design	Risk of Bias	Indirectness	Inconsistency	Imprecision	Publication Bias		
Anticoagulation									
No anticoagulation	2	Obs	S *	NS	NS	S	Undetected	⊕⊕○○	6.32 (0.73–54.58)
Prophylactic	5	Obs	S *	NS	NS	S	Undetected	⊕⊕○○	0.73 (0.46–1.17)
Intermediate	1	Obs	S *	NS	NS	S	Undetected	⊕⊕○○	0.70 (0.29–1.70)
Therapeutic	7	Obs	S *	NS	S	S	Undetected	⊕⊕○○	1.21 (0.61–2.38)
Demographic factors									
Male sex	16	Obs	S *	NS	NS	S	Undetected	⊕⊕○○	1.32 (0.84–2.06)
Obesity	4	Obs	S *	NS	NS	S	Undetected	⊕⊕○○	1.41 (0.64–3.09)

ACE: angiotensin converting enzyme; COPD: chronic obstructive pulmonary disease; ECMO: extracorporeal membrane oxygenation; HIV: human immunodeficiency virus; NS: not serious; Obs: observational; S: serious; VTE: venous thromboembolism; * Certainty in evidence was downgraded for risk of bias, given that confounders were not excluded. ⊕○○○ indicates very low certainty-evidence, ⊕⊕○○ indicates low-certainty evidence, ⊕⊕⊕○ indicates moderate-certainty evidence.

3.4. Sensitivity Analysis

We performed 92 statistical tests. Using the Bonferroni correction, only the hospital stay duration ($p < 0.0001$), peak of D-dimer ($p < 0.0001$), D-dimer ($p < 0.0001$), troponin T ($p < 0.0001$), and mechanical ventilation ($p < 0.0001$) remained statistically significant.

4. Discussion

In the present meta-analysis that encompasses 5296 ICU patients from 21 observational studies, we identified low to moderate-certainty evidence for the risk factors for VTE, including the COVID-19 severity (i.e., requirement for mechanical ventilation, use of inotropic drugs, length of hospital stay, and SOFA score at VTE screening) and biological parameters (i.e., D-dimer levels, DIC ISTH criteria, CRP level, troponin T, procalcitonin, thrombocytopenia). Some risk factors previously reported were not confirmed by our analysis, including an older age, female sex, obesity [36,37], and a medical history of VTE or cancer [38,39]. Interestingly, the use of anticoagulants at any dose was not associated with a different risk of thrombosis in the univariate analysis. The level of evidence for VTE risk factors was most prominent for the D-dimer and CRP levels, followed by procalcitonin, IL-6, and markers of severity (i.e., mechanical ventilation, inotrope, or neuromuscular blockade duration). The negative correlation between VTE, congestive heart failure, and the history of cardiovascular disease might be explained by the anticoagulant use at admission for these patients, which would hamper interpretation of these results.

Taken together, the present meta-analysis provides more precise estimates of the association between individual risk factors and the risk of VTE, which may help identifying ICU patients at lower and higher risk of VTE. Three randomized trials in ICU patients reported the absence of efficacy of therapeutic anticoagulation or intermediate-dose thromboprophylaxis compared to the standard dose thromboprophylaxis [6,7,40], whereas therapeutic anticoagulation was associated with increased survival in non-critically ill patients hospitalized for COVID-19 [41]. In patients with mild COVID-19 that are not mechanically ventilated, therapeutic heparin use was not associated with a decreased risk of death, intubation, ICU admission, or thromboembolism when compared to prophylactic anticoagulation [42].

These trials included patients irrespective of their D-dimer levels or inflammatory parameters. Our study identified the candidate risk factors for VTE in ICU patients with COVID-19, which is crucial for VTE screening and prevention. Indeed, the stratifications of VTE risk may increase the benefit–risk ratio of primary prevention of thrombosis using intermediate or therapeutic anticoagulant dose. This concept is supported by a retrospective monocentric study including critically ill COVID-19 patients, suggesting that this subgroup of patients with elevated D-dimer levels requiring mechanical ventilation—two risk factors identified in the present meta-analysis—may benefit from therapeutic anticoagulation [43]. Although subgroup analysis from recent trials did not show any interaction between D-dimer levels and the efficacy of full-dose anticoagulation, critically ill COVID-19 patients are likely to represent a highly heterogeneous group of patients with a diverse risk of VTE and bleeding. We thus speculate that the individual risk stratification could be useful to identify patients susceptible to benefit from systematic screening or anticoagulation intensification.

Interestingly, we confirmed the increased risk of VTE amongst patients with high inflammation biomarkers, whereas “traditional risk factors” for thrombosis (i.e., cancer, history of VTE, obesity [44]) were not associated with VTE. These observations support the concept that thrombosis in COVID-19 may result from mechanisms implicating pulmonary inflammation, intravascular coagulopathy associated with D-dimer elevation [45], endothelial dysfunction, and immunothrombosis [46] (Figure 2). In our meta-analysis, the best tool to assess sepsis-related coagulopathy seemed to be CRP elevation and, to a lesser extent, procalcitonin—with regards to the risk of a false positive result for the latter. The clinical disease-related severity markers were the consequence of both sepsis-related coagulopathy and systemic inflammation. Accordingly, targeting inflammation

may be considered as a potential additional therapeutic target to prevent COVID-19-related thrombotic complications [47].

A potential limitation of the present meta-analysis was the variability in the study sample, study design, patients' characteristics and management, and the definition of VTE events. In addition, many estimates were associated with large confidence intervals despite the increased statistical power provided by the meta-analysis. Conversely, because of the multiple statistical tests, we could not exclude fortuitous association (i.e., false positive results related to type 1 error). This may explain the protective effect of the presence of cardiovascular disease, or the effect of IL-6 levels and cardiovascular disease on VTE risk. These factors were non-significant after the Bonferroni correction. Nonetheless, this study is unique in many aspects, including its comprehensiveness, the novelty of its findings, and its rigorous methods. Finally, we produced a crude estimate of the risk factors, with a high probability of collinearity between variables between the inflammatory and coagulation parameters [47]. Multicentric studies using a multivariable model are thus warranted to validate the independent variables predicting VTE occurrence.

5. Conclusions

The present meta-analysis identified the relevant risk factors of VTE in patients admitted to the ICU for severe COVID-19, mainly inflammation profile and illness severity. These findings may help identify individual patients at higher risk of VTE, inform experts developing risk assessment models to risk-stratify patients, and ultimately, improve patients' outcomes through optimal screening and management strategies.

Supplementary Materials: The following are available online at <https://www.mdpi.com/article/10.3390/ijerph182412944/s1>, Figure S1: Funnel plot of studies reporting D-dimer as prognostic factor for VTE, Figure S2: Funnel plot of studies reporting C-reactive protein as prognostic factor for VTE, Figure S3: Funnel plot of studies reporting platelet level as prognostic factor for VTE, Figure S4: Funnel plot of studies reporting age as prognostic factor for VTE, Figure S5: Funnel plot of studies reporting body mass index as prognostic factor for VTE, Figure S6: Funnel plot of studies reporting fibrinogen level as prognostic factor for VTE.

Author Contributions: Conceptualization: H.L., S.M., V.M., M.D., S.P. and J.-C.L.; methodology: H.L., S.M., S.P. and J.-C.L.; investigation: H.L. and S.M.; Data curation: H.L. and J.-C.L.; formal analysis: H.L., S.P. and J.-C.L.; visualization: H.L., S.M., V.M., M.D., S.P. and J.-C.L.; writing—original draft: H.L.; writing—review and editing: S.M., S.P. and J.-C.L., Supervision: S.P. and J.-C.L. All authors have read and agreed to the published version of the manuscript.

Funding: This research received no external funding.

Institutional Review Board Statement: Not applicable.

Informed Consent Statement: Not applicable.

Data Availability Statement: The data presented in this study are available on request from the corresponding author.

Conflicts of Interest: The authors declare no conflict of interest.

References

1. Rothan, H.A.; Byrareddy, S.N. The epidemiology and pathogenesis of coronavirus disease (COVID-19) outbreak. *J. Autoimmun.* **2020**, *109*, 102433. [\[CrossRef\]](#)
2. Iba, T.; Levy, J.H.; Levi, M.; Thachil, J. Coagulopathy in COVID-19. *J. Thromb. Haemost.* **2020**, *18*, 2103–2109. [\[CrossRef\]](#) [\[PubMed\]](#)
3. Goshua, G.; Pine, A.B.; Meizlish, M.L.; Chang, C.-H.; Zhang, H.; Bahel, P.; Baluha, A.; Bar, N.; Bona, R.D.; Burns, A.J.; et al. Endotheliopathy in COVID-19-associated coagulopathy: Evidence from a single-centre, cross-sectional study. *Lancet Haematol.* **2020**, *7*, e575–e582. [\[CrossRef\]](#)
4. Tan, B.K.; Mainbourg, S.; Friggeri, A.; Bertolotti, L.; Douplat, M.; Dargaud, Y.; Grange, C.; Lobbes, H.; Provencher, S.; Lega, J.C. Arterial and venous thromboembolism in COVID-19: A study-level meta-analysis. *Thorax* **2021**, *76*, 970–979. [\[CrossRef\]](#)
5. Mai, V.; Tan, B.K.; Mainbourg, S.; Potus, F.; Cucherat, M.; Lega, J.C.; Provencher, S. Venous thromboembolism in COVID-19 compared to non-COVID-19 cohorts: A systematic review with meta-analysis. *Vascul. Pharmacol.* **2021**, *139*, 106882. [\[CrossRef\]](#) [\[PubMed\]](#)

6. REMAP-CAP Investigators; ACTIV-4a Investigators; ATTACC Investigators; Goligher, E.C.; Bradbury, C.A.; McVerry, B.J.; Lawler, P.R.; Berger, J.S.; Gong, M.N.; Carrier, M.; et al. Therapeutic Anticoagulation with Heparin in Critically Ill Patients with Covid-19. *N. Engl. J. Med.* **2021**, *385*, 777–789. [[CrossRef](#)]
7. Perepu, U.; Chambers, I.; Wahab, A.; Ten Eyck, P.; Wu, C.; Dayal, S.; Sutamtewagul, G.; Bailey, S.R.; Rosenstein, L.J.; Lentz, S.R. Standard prophylactic versus intermediate dose enoxaparin in adults with severe COVID-19: A multi-center, open-label, randomized controlled trial. *J. Thromb. Haemost.* **2021**, *19*, 2225–2234. [[CrossRef](#)] [[PubMed](#)]
8. Cuker, A.; Tseng, E.K.; Nieuwlaat, R.; Angchaisuksiri, P.; Blair, C.; Dane, K.; Davila, J.; DeSancho, M.T.; Diuguid, D.; Griffin, D.O.; et al. American Society of Hematology 2021 guidelines on the use of anticoagulation for thromboprophylaxis in patients with COVID-19. *Blood Adv.* **2021**, *5*, 872–888. [[CrossRef](#)]
9. Mai, V.; Mainbourg, S.; Tan, B.K.; Lega, J.-C.; Provencher, S. Significant Major Bleeding in Hospitalized Patients with COVID-19 Receiving Thromboprophylaxis. *Thromb. Haemost.* **2021**, *121*, 1670–1673. [[CrossRef](#)] [[PubMed](#)]
10. Riley, R.D.; Moons, K.G.M.; Snell, K.I.E.; Ensor, J.; Hooft, L.; Altman, D.G.; Hayden, J.; Collins, G.S.; Debray, T.P.A. A guide to systematic review and meta-analysis of prognostic factor studies. *BMJ* **2019**, *364*, k4597. [[CrossRef](#)] [[PubMed](#)]
11. Foroutan, F.; Guyatt, G.; Zuk, V.; Vandvik, P.O.; Alba, A.C.; Mustafa, R.; Vernooij, R.; Arevalo-Rodriguez, I.; Munn, Z.; Roshanov, P.; et al. GRADE Guidelines 28: Use of GRADE for the assessment of evidence about prognostic factors: Rating certainty in identification of groups of patients with different absolute risks. *J. Clin. Epidemiol.* **2020**, *121*, 62–70. [[CrossRef](#)] [[PubMed](#)]
12. PPage, M.J.; McKenzie, J.E.; Bossuyt, P.M.; Boutron, I.; Hoffmann, T.C.; Mulrow, C.D.; Shamseer, L.; Tetzlaff, J.M.; Akl, E.A.; Brennan, S.E.; et al. The PRISMA 2020 statement: An updated guideline for reporting systematic reviews. *Int. J. Surg.* **2021**, *88*, 105906. [[CrossRef](#)] [[PubMed](#)]
13. Chinn, S. A simple method for converting an odds ratio to effect size for use in meta-analysis. *Stat. Med.* **2000**, *19*, 3127–3131. [[CrossRef](#)]
14. Hozo, S.P.; Djulbegovic, B.; Hozo, I. Estimating the mean and variance from the median, range, and the size of a sample. *BMC Med. Res. Methodol.* **2005**, *5*, 13. [[CrossRef](#)]
15. Al-Samkari, H.; Gupta, S.; Leaf, R.K.; Wang, W.; Rosovsky, R.P.; Brenner, S.K.; Hayek, S.S.; Berlin, H.; Kapoor, R.; Shaefi, S.; et al. Thrombosis, Bleeding, and the Observational Effect of Early Therapeutic Anticoagulation on Survival in Critically Ill Patients With COVID-19. *Ann. Intern. Med.* **2021**, *174*, 622–632. [[CrossRef](#)] [[PubMed](#)]
16. Bellmunt-Montoya, S.; Riera, C.; Gil, D.; Rodríguez, M.; García-Reyes, M.; Martínez-Carnovale, L.; Marrero, C.; Gil, M.; Ruiz-Rodríguez, J.C.; Ferrer, R.; et al. COVID-19 Infection in Critically Ill Patients Carries a High Risk of Venous Thrombo-embolism. *Eur. J. Vasc. Endovasc. Surg.* **2021**, *61*, 628–634. [[CrossRef](#)]
17. Contou, D.; Pajot, O.; Cally, R.; Logre, E.; Fraissé, M.; Mentec, H.; Plantefève, G. Pulmonary embolism or thrombosis in ARDS COVID-19 patients: A French monocenter retrospective study. *PLoS ONE* **2020**, *15*, e0238413. [[CrossRef](#)]
18. Cui, S.; Chen, S.; Li, X.; Liu, S.; Wang, F. Prevalence of venous thromboembolism in patients with severe novel coronavirus pneumonia. *J. Thromb. Haemost.* **2020**, *18*, 1421–1424. [[CrossRef](#)] [[PubMed](#)]
19. Desborough, M.J.R.; Doyle, A.J.; Griffiths, A.; Retter, A.; Breen, K.A.; Hunt, B.J. Image-proven thromboembolism in patients with severe COVID-19 in a tertiary critical care unit in the United Kingdom. *Thromb. Res.* **2020**, *193*, 1–4. [[CrossRef](#)]
20. Dujardin, R.W.; Hilderink, B.N.; Haksteen, W.E.; Middeldorp, S.; Vlaar, A.P.; Thachil, J.; Müller, M.C.; Juffermans, N.P. Biomarkers for the prediction of venous thromboembolism in critically ill COVID-19 patients. *Thromb. Res.* **2020**, *196*, 308–312. [[CrossRef](#)]
21. Fraissé, M.; Logre, E.; Pajot, O.; Mentec, H.; Plantefève, G.; Contou, D. Thrombotic and hemorrhagic events in critically ill COVID-19 patients: A French monocenter retrospective study. *Crit. Care* **2020**, *24*, 275. [[CrossRef](#)] [[PubMed](#)]
22. Gibson, C.J.; Alqunaibit, D.; Smith, K.E.; Bronstein, M.; Eachempati, S.R.; Kelly, A.G.; Lee, C.; Minneman, J.A.; Narayan, M.; Shou, J.; et al. Probative Value of the D-Dimer Assay for Diagnosis of Deep Venous Thrombosis in the Coronavirus Disease 2019 Syndrome. *Crit. Care Med.* **2020**, *48*, e1322–e1326. [[CrossRef](#)]
23. Grandmaison, G.; Andrey, A.; Périard, D.; Engelberger, R.P.; Carrel, G.; Doll, S.; Dexpert, J.B.; Krieger, C.; Ksouri, H.; Hayoz, D.; et al. Systematic Screening for Venous Thromboembolic Events in COVID-19 Pneumonia. *TH Open* **2020**, *4*, e113–e115. [[CrossRef](#)] [[PubMed](#)]
24. Helms, J.; Severac, F.; Merdji, H.; Schenck, M.; Clere-Jehl, R.; Baldacini, M.; Ohana, M.; Grunebaum, L.; Castelain, V.; Anglés-Cano, E.; et al. Higher anticoagulation targets and risk of thrombotic events in severe COVID-19 patients: Bi-center cohort study. *Ann. Intensive Care* **2021**, *11*, 1–8. [[CrossRef](#)] [[PubMed](#)]
25. Hippensteel, J.A.; Burnham, E.L.; Jolley, S.E. Prevalence of Venous Thromboembolism in Critically Ill Patients with COVID-19. *Br. J. Haematol.* **2020**, *190*, e134–e137. [[CrossRef](#)] [[PubMed](#)]
26. Maatman, T.K.; Jalali, F.; Feizpour, C.; Douglas, A. Routine Venous Thromboembolism Prophylaxis May Be Inadequate in the Hypercoagulable State of Severe Coronavirus Disease 2019. *Crit. Care Med.* **2020**, *48*, e783–e790. [[CrossRef](#)] [[PubMed](#)]
27. Mirsadraee, S.; Gorog, D.A.; Mahon, C.F.; Rawal, B.; Semple, T.R.; Nicol, E.D.; Arachchilage, D.R.; Devaraj, A.; Price, S.; Desai, S.R.; et al. Prevalence of Thrombotic Complications in ICU-Treated Patients With Coronavirus Disease 2019 Detected With Systematic CT Scanning. *Crit. Care Med.* **2021**, *49*, 804–815. [[CrossRef](#)] [[PubMed](#)]
28. Mueller-Peltzer, K.; Krauss, T.; Benndorf, M.; Lang, C.N.; Bamberg, F.; Bode, C.; Duerschmied, D.; Staudacher, D.L.; Zotzmann, V. Pulmonary artery thrombi are co-located with opacifications in SARS-CoV2 induced ARDS. *Respir. Med.* **2020**, *172*, 106135. [[CrossRef](#)]

29. Nahum, J.; Morichau-Beauchant, T.; Daviaud, F.; Echegut, P.; Fichet, J.; Maillet, J.M.; Thierry, S. Venous Thrombosis Among Critically Ill Patients With Coronavirus Disease 2019 (COVID-19). *JAMA Netw. Open* **2020**, *3*, e2010478. [\[CrossRef\]](#)
30. Shah, A.; Donovan, K.; McHugh, A.; Pandey, M.; Aaron, L.; Bradbury, C.A.; Stanworth, S.J.; Alikhan, R.; Kier, S.V.; Maher, K.; et al. Thrombotic and haemorrhagic complications in critically ill patients with COVID-19: A multicentre observational study. *Crit. Care* **2020**, *24*, 561. [\[CrossRef\]](#)
31. Soumagne, T.; Lascarrou, J.B.; Hraïech, S.; Horlait, G.; Higny, J.; d'Hondt, A.; Grimaldi, D.; Gaudry, S.; Courcelle, R.; Carbutti, G.; et al. Factors Associated With Pulmonary Embolism Among Coronavirus Disease 2019 Acute Respiratory Distress Syndrome: A Multicenter Study among 375 Patients. *Crit Care Explor* **2020**, *2*, e0166. [\[CrossRef\]](#)
32. Torres-Machorro, A.; Anguiano-Álvarez, V.M.; Grimaldo-Gómez, F.A.; Rodríguez-Zanella, H.; de la Rosa, E.C.; Mora-Canela, S.; Lerma, C.; García-Cruz, E.; Ramos-Enriquez, Á.; Ramirez-Marroquin, S.; et al. Asymptomatic deep vein thrombosis in critically ill COVID-19 patients despite therapeutic levels of anti-Xa activity. *Thromb. Res.* **2020**, *196*, 268–271. [\[CrossRef\]](#)
33. Trigonis, R.A.; Holt, D.B.; Yuan, R.; Siddiqui, A.A.; Craft, M.K.; Khan, B.A.; Kapoor, R.; Rahman, O. Incidence of Venous Thromboembolism in Critically Ill Coronavirus Disease 2019 Patients Receiving Prophylactic Anticoagulation. *Crit. Care Med.* **2020**, *48*, e805–e808. [\[CrossRef\]](#) [\[PubMed\]](#)
34. Voicu, S.; Bonnin, P.; Stépanian, A.; Chousterman, B.G.; Le Gall, A.; Malissin, I.; Deye, N.; Siguret, V.; Mebazaa, A.; Mégarbane, B. High Prevalence of Deep Vein Thrombosis in Mechanically Ventilated COVID-19 Patients. *J. Am. Coll. Cardiol.* **2020**, *76*, 480–482. [\[CrossRef\]](#) [\[PubMed\]](#)
35. Zhang, L.; Feng, X.; Zhang, D.; Jiang, C.; Mei, H.; Wang, J.; Zhang, C.; Li, H.; Xia, X.; Kong, S.; et al. Deep Vein Thrombosis in Hospitalized Patients With COVID-19 in Wuhan, China. *Circulation* **2020**, *142*, 114–128. [\[CrossRef\]](#)
36. Lim, W.; Meade, M.; Lauzier, F.; Zarychanski, R.; Mehta, S.; Lamontagne, F.; Dodek, P.; McIntyre, L.; Hall, R.; Heels-Ansdell, D.; et al. Failure of anticoagulant thromboprophylaxis: Risk factors in medical-surgical critically ill patients. *Crit. Care Med.* **2015**, *43*, 401–410. [\[CrossRef\]](#)
37. Khan, F.; Tritschler, T.; Kahn, S.R.; Rodger, M.A. Venous thromboembolism. *Lancet* **2021**, *398*, 64–77. [\[CrossRef\]](#)
38. Lamontagne, F.; McIntyre, L.; Dodek, P.; Heels-Ansdell, D.; Meade, M.; Pemberton, J.; Skrobik, Y.; Seppelt, I.; Vlahakis, N.E.; Muscedere, J.; et al. Nonleg Venous Thrombosis in Critically Ill Adults: A Nested Prospective Cohort Study. *JAMA Intern. Med.* **2014**, *174*, 689–696. [\[CrossRef\]](#)
39. Eck, R.J.; Hulshof, L.; Wiersema, R.; Thio, C.H.; Hiemstra, B.; van den Oever, N.C.; Gans, R.O.; van der Horst, I.C.; Meijer, K.; Keus, F. Incidence, prognostic factors, and outcomes of venous thromboembolism in critically ill patients: Data from two prospective cohort studies. *Crit Care* **2021**, *25*, 27. [\[CrossRef\]](#)
40. Sadeghipour, P.; Talasaz, A.H.; Rashidi, F.; Sharif-Kashani, B.; Beigmohammadi, M.T.; Farrokhpour, M.; Sezavar, S.H.; Payandemehr, P.; Dabbagh, A.; Moghadam, K.G.; et al. Effect of Intermediate-Dose vs Standard-Dose Prophylactic Anticoagulation on Thrombotic Events, Extracorporeal Membrane Oxygenation Treatment, or Mortality Among Patients With COVID-19 Admitted to the Intensive Care Unit: The INSPIRATION Randomized Clinical Trial. *JAMA* **2021**, *325*, 1620–1630.
41. ATTACC Investigators; ACTIV-4a Investigators; REMAP-CAP Investigators; Lawler, P.R.; Goligher, E.C.; Berger, J.S.; Neal, M.D.; McVerry, B.J.; Nicolau, J.C.; Gong, M.N.; et al. Therapeutic Anticoagulation with Heparin in Noncritically Ill Patients with Covid-19. *N. Engl. J. Med.* **2021**, *385*, 790–802. [\[CrossRef\]](#) [\[PubMed\]](#)
42. Sholzberg, M.; Tang, G.H.; Rahhal, H.; AlHamzah, M.; Kreuziger, L.B.; Áinle, F.N.; Alomran, F.; Alayed, K.; Alsheef, M.; AlSumait, F.; et al. Effectiveness of therapeutic heparin versus prophylactic heparin on death, mechanical ventilation, or intensive care unit admission in moderately ill patients with covid-19 admitted to hospital: RAPID randomised clinical trial. *BMJ* **2021**, *375*, n2400. [\[CrossRef\]](#) [\[PubMed\]](#)
43. Yu, B.; Gutierrez, V.P.; Carlos, A.; Hoge, G.; Pillai, A.; Kelly, J.D.; Menon, V. Empiric use of anticoagulation in hospitalized patients with COVID-19: A propensity score-matched study of risks and benefits. *Biomark. Res.* **2021**, *9*, 29. [\[CrossRef\]](#)
44. Darzi, A.J.; Karam, S.G.; Charide, R.; Etzeandia-Ikobaltzeta, I.; Cushman, M.; Gould, M.K.; Mbuagbaw, L.; Spencer, F.A.; Spyropoulos, A.C.; Streiff, M.B.; et al. Prognostic factors for VTE and bleeding in hospitalized medical patients: A systematic review and meta-analysis. *Blood* **2020**, *135*, 1788–1810. [\[CrossRef\]](#) [\[PubMed\]](#)
45. McGonagle, D.; O'Donnell, J.S.; Sharif, K.; Emery, P.; Bridgewood, C. Immune mechanisms of pulmonary intravascular coagulopathy in COVID-19 pneumonia. *Lancet Rheumatol.* **2020**, *2*, e437–e445. [\[CrossRef\]](#)
46. Bonaventura, A.; Vecchié, A.; Dagna, L.; Martinod, K.; Dixon, D.L.; Van Tassell, B.W.; Dentali, F.; Montecucco, F.; Massberg, S.; Levi, M.; et al. Endothelial dysfunction and immunothrombosis as key pathogenic mechanisms in COVID-19. *Nat. Rev. Immunol.* **2021**, *21*, 319–329. [\[CrossRef\]](#) [\[PubMed\]](#)
47. Al-Samkari, H.; Karp Leaf, R.S.; Dzik, W.H.; Carlson, J.C.; Fogerty, A.E.; Waheed, A.; Goodarzi, K.; Bendapudi, P.K.; Bornikova, L.; Gupta, S.; et al. COVID-19 and coagulation: Bleeding and thrombotic manifestations of SARS-CoV-2 infection. *Blood* **2020**, *136*, 489–500. [\[CrossRef\]](#)