



**HAL**  
open science

# **A new 2-hit model combining serine racemase deletion and 3 maternal separation displays behavioral and cognitive 4 deficits associated with schizophrenia**

Jean-Marie Billard, Caroline Lahogue, Michel Boulouard, François Menager,  
Thomas Freret, Jean-Marie Billard, Valentine Bouet

## ► To cite this version:

Jean-Marie Billard, Caroline Lahogue, Michel Boulouard, François Menager, Thomas Freret, et al..  
A new 2-hit model combining serine racemase deletion and 3 maternal separation displays behavioral  
and cognitive 4 deficits associated with schizophrenia. 2024. hal-04627091

**HAL Id: hal-04627091**

**<https://hal.science/hal-04627091>**

Preprint submitted on 27 Jun 2024

**HAL** is a multi-disciplinary open access archive for the deposit and dissemination of scientific research documents, whether they are published or not. The documents may come from teaching and research institutions in France or abroad, or from public or private research centers.

L'archive ouverte pluridisciplinaire **HAL**, est destinée au dépôt et à la diffusion de documents scientifiques de niveau recherche, publiés ou non, émanant des établissements d'enseignement et de recherche français ou étrangers, des laboratoires publics ou privés.

# Schizophrenia Research

## A new 2-hit model combining serine racemase deletion and maternal separation displays behavioral and cognitive deficits associated with schizophrenia --Manuscript Draft--

<b>Manuscript Number:</b>	SCHRES-D-23-00662R1
<b>Article Type:</b>	Full Length Article
<b>Keywords:</b>	multiple-hit; Psychosis; Stress; maternal separation; memory; serine racemase
<b>Corresponding Author:</b>	Caroline Lahogue University of Caen Normandy Faculty of Health Sciences FRANCE
<b>First Author:</b>	Caroline Lahogue
<b>Order of Authors:</b>	Caroline Lahogue Michel Boulouard François Menager Thomas Freret Jean-Marie Billard Valentine Bouet
<b>Abstract:</b>	Schizophrenia (SCZ) is a multifactorial psychotic disorder characterized by positive and negative symptoms as well as cognitive impairments. To advance the current treatments, it is important to improve animal models by considering the multifactorial etiology, thus by combining different risk factors. The objective of our study was to explore in a new mouse model, the impact of genetic deletion of serine racemase (genetic vulnerability) combined with an early stress factor induced by maternal separation (early environmental exposure) in the context of SCZ development. The face validity of the model was assessed through a wide range of behavioral experiments. The 2-hit mice displayed an increased locomotor activity mimicking positive symptoms, working memory impairment, cognitive deficits and recognition memory alterations, which could reflect neophobia. This new multifactorial model therefore presents an interesting phenotype for modelling animal model with behavioral and cognitive deficits associated with SCZ.
<b>Suggested Reviewers:</b>	Kevin Fone ku.ca.mahgnitton@enof.nivek Maarten van den Buuse m.vandenbuuse@latrobe.edu.au Gwenaëlle Le Pen gwenaelle.le-pen@inserm.fr Ewelina Knapska e.knapska@nencki.gov.pl Bart Ellenbroek bart.ellenbroek@vuw.ac.nz Oluwarotimi Folorunso ofolorunso@mclean.harvard.edu



COMETE  
UMR 1075 UNICAEN / INSERM



Inserm  
Institut national  
de la santé et de la recherche médicale

Normandie Université

Cyceron  
PLATEFORME D'IMAGERIE BIOMÉDICALE

CHU  
CAEN NORMANDIE

## Caroline LAHOGUE

COMETE U1075, UFR Santé  
Campus Horowitz Bd Becquerel  
14032 Caen  
☎ : 02 31 56 68 72  
caroline.lahogue@unicaen.fr

Caen, 25<sup>th</sup> of March 2023,

Please find enclosed a manuscript entitled « **A new 2-hit model combining serine racemase deletion and maternal separation displays behavioral and cognitive deficits associated with schizophrenia** » to be considered for publication in *Schizophrenia Research*.

We describe here a new animal model of neurodevelopmental disorders that could substantially improve the research of new treatments. Our new multifactorial model presents both positive-like symptoms and cognitive deficits leading to an interesting phenotype for modelling paranoid schizophrenia. Because we believe that this model could be considered as a robust tool for testing new therapeutic strategies against cognitive deficits, we hope that this manuscript will attract your attention and will be considered for publication in *Schizophrenia Research*.

Sincerely Yours,

Caroline LAHOGUE and Valentine BOUET



**COMETE**  
UMA 1075 UNICAEN / INSERM



 **Inserm**  
Institut national  
de la santé et de la recherche médicale

  
Normandie Université

 **Cyceron**  
PLATEFORME D'IMAGERIE BIOMÉDICALE

**CHU**  
CAEN NORMANDIE

## Caroline LAHOGUE

COMETE U1075, UFR Santé  
Campus Horowitz Bd Becquerel  
14032 Caen

☎ : 02 31 56 68 72

caroline.lahogue@unicaen.fr

**Declaration of competing interest:** The authors declare no conflict of interest.

Caroline LAHOGUE and Valentine BOUET



---

1 Article

2 **A new 2-hit model combining serine racemase deletion and**  
3 **maternal separation displays behavioral and cognitive**  
4 **deficits associated with schizophrenia**

5 Caroline LAHOGUE\*, Michel BOULOUARD, François MENAGER, Thomas FRERET, Jean-Marie BILLARD  
6 and Valentine BOUET\*

7 Normandie Université, UNICAEN, INSERM, COMETE, CYCERON, FHU A<sup>2</sup>M<sup>2</sup>P, CHU Caen, 14000 Caen 5 France.

8

9 \* **Corresponding authors:** Caroline LAHOGUE, Valentine BOUET,

10 UNICAEN COMETE, UMR S-1075, Bat GMPC, Campus Horowitz, Bd Henri Becquerel, CS14032 Caen Cedex 5, France.

11 email: [valentine.bouet@unicaen.fr](mailto:valentine.bouet@unicaen.fr); [caroline.lahogue@unicaen.fr](mailto:caroline.lahogue@unicaen.fr)

12

13

---

14 **Abstract**

15 Schizophrenia (SCZ) is a multifactorial psychotic disorder characterized by positive and negative  
16 symptoms **as well as** cognitive impairments. To **advance the** current treatments, it is important to  
17 improve animal models by considering the multifactorial etiology, **thus by combining different risk**  
18 **factors. The objective of our study was to explore in a a new mouse model, the impact of genetic**  
19 **deletion of *serine racemase* (genetic vulnerability) combined with an early stress factor induced by**  
20 **maternal separation (early environmental exposure) in the context of SCZ development.** The face  
21 validity of the model was assessed through a **wide range** of behavioral experiments. The 2-hit mice  
22 displayed an increased locomotor activity mimicking positive symptoms, working memory impairment,  
23 cognitive deficits and recognition memory alterations, **which** could reflect neophobia. This new  
24 multifactorial model therefore **presents** an interesting phenotype for modelling **animal model with**  
25 **behavioral and cognitive deficits associated with SCZ.**

26 **Keywords:** multiple-hit; psychosis; stress; maternal separation; memory; serine racemase

27

---

28 **1. Introduction**

29 Schizophrenia (SCZ) is a psychotic disorder characterized by heterogeneous symptoms, including  
30 positive (hallucinations, delusions), negative symptoms (avolition, anhedonia, social withdrawal) **and**  
31 **cognitive impairments** (working memory deficits, attentional dysfunction) (Addington et al., 1991;  
32 Tandon et al., 2013). The first psychosis episode usually occurs in the early adulthood (15 – 25 years)  
33 and the course of the illness varies from one patient to another (Tandon et al., 2013). Although the  
34 etiology of SCZ is still unknown, it is now well established that interactions between the genetic  
35 background and environmental factors (gene x environment interactions) have a significant role in the  
36 development of the disease (Moran et al., 2016; Guerrin et al., 2021; Wahbeh and Avramopoulos,  
37 2021). Numerous genome-wide association studies reported genes polymorphism and copy number  
38 variants in schizophrenic patients (Rees and Kirov, 2021). Several genes have been identified as risk  
39 factors, including those related to neuronal communication involving glutamatergic neurotransmission

40 (Morita et al., 2007; Ripke et al., 2014; Nakazawa and Sapkota, 2020). The dual hit hypothesis of SCZ  
41 suggests that the genetic vulnerability (first hit), in association with environmental factors (early stress  
42 or late environmental factors; second hit) could favor its occurrence (Brown, 2011; Davis et al., 2016;  
43 Millan et al., 2016; Stilo and Murray, 2019). Environmental factors include several complications during  
44 pregnancy (such as mother infection, malnutrition, or psychosocial stress), childhood trauma (physical,  
45 psychological, or sexual abuse, neglect, or exposure to physical and psychological abuse) and adversity,  
46 bullying and discrimination or drug abuse during adulthood (Ellenbroek and Cools, 2002; Murthy and  
47 Gould, 2018; Guerrin et al., 2021). Childhood trauma is one of the factors widely studied in the context  
48 of SCZ (Larsson et al., 2013). The stress generated by a traumatic episode alters the hypothalamic-  
49 pituitary-adrenal axis (HPA). Several paradigms have been developed to reproduce childhood trauma  
50 in animal models of SCZ and one of the most frequent is maternal separation (MS) (reviewed in Nishi  
51 et al., 2013; Marco et al., 2015; Čater and Majdič, 2022). MS for 24h at post-natal day (PND) 9 in rodent  
52 disrupts the HPA axis (Tractenberg et al., 2016; Van Bodegom et al., 2017) and produces sensorimotor  
53 gating deficit (Ellenbroek and Cools, 2002) while it increases anxiety-like behavior and alters sociability  
54 in rodents (Bouet et al., 2011). These are all important hallmarks of SCZ.

55 Antipsychotic drugs are have been shown effective (even if not curative) to treat the positive  
56 symptoms while the negative and cognitive symptoms remain resistant (Nucifora et al., 2019; Correll  
57 and Howes, 2021). Among the possible explanations is the lack of reliability in the validity of animal  
58 models of SCZ used in preclinical investigations (Sotiropoulos et al., 2021). Indeed, such animal models  
59 are expected to mimic as much as possible the mechanisms underlying the disease (construct validity),  
60 as well as to display behavioral abnormalities and cellular alterations similar to those observed in  
61 patients (face validity). Finally, they have to respond to the existing treatments (predictive validity).  
62 Although multiple animal models of SCZ have been developed, they mostly used a single risk factor  
63 and therefore, do not accurately reflect the complexities of the disease (Jones et al., 2011). More  
64 recently, some multifactorial models combining two factors (genetic x environment; genetic x genetic  
65 or environment x environment factors) have been developed to better consider the face validity  
66 (Moran et al., 2016; Guerrin et al., 2021; Sotiropoulos et al., 2021). Even for 2-hit animal models of  
67 SCZ, it is complicated to observe all the symptoms of the disease, and each model presents a different  
68 behavioral phenotype (for review see Guerrin et al., 2021). For example, alteration of the working  
69 memory, which frequently occurs in SCZ patients (Conklin et al., 2005; Timofeeva and Levin, 2011a), is  
70 not systematically reproduced in all 2-hit models. This could be due to the fact that few studies have  
71 been conducted on this subject (Choy et al., 2009; Schroeder et al., 2015; Guerrin et al., 2021). In this  
72 sense, the necessity to improve comprehension of the multifactorial models of the disease remains  
73 therefore a major issue that prompted us to reconsider the development of a new 2-hits mouse model  
74 of SCZ.

75 Among the genes associated with SCZ, serine racemase (SR) is now considered to be highly relevant  
76 (Morita et al., 2007; Basu et al., 2009; Jacobi et al., 2019). SR is localized in the neuronal cells of the  
77 forebrain and synthesizes D-serine, a co-agonist of the N-methyl-D-aspartate subtype of glutamate  
78 receptors (NMDAR) (Wolosker et al., 1999b, 1999a). Some clinical studies have found a polymorphism  
79 in the SR gene, associated with a reduction of D-serine levels in the cerebrospinal fluid and brain of  
80 schizophrenic patients (Yamada et al., 2005; Goltsov et al., 2006; Morita et al., 2007; Jacobi et al., 2019;  
81 Nakazawa and Sapkota, 2020). The total deletion of exon 1 of the SR gene (SR-KO) decreased D-serine  
82 levels by at least 90 % in the brain of mice and is linked to behavioral alterations such as hyperactivity  
83 and memory deficits (Basu et al., 2009; Ploux et al., 2020). Recent *ex vivo* electrophysiological studies

84 have reported an alteration of the excitatory/inhibitory balance in the CA1 hippocampal networks of  
85 those mice (Ploux et al., 2020; Jami et al., 2021). Thus, the phenotype of the SR-KO mice, considered  
86 as a model of NMDAR hypofunction, appeared as an interesting model to test the potential impact of  
87 combination with an early stress exposure on cognitive abilities. Herein, we selected MS of 24 h at  
88 post-natal day (PND9) as an early stress factor (Ellenbroek et al., 1998; Ellenbroek and Riva, 2003) since  
89 it has been shown to impaired anxiety-like and social behavior in rodents (Fabricius et al., 2008; Bouet  
90 et al., 2011). In the present study, four groups of male mice were constituted, including wild-type mice  
91 (control group), 1-hit SR-KO mice (SR-KO group), 1-hit mice with maternal separation (MS group), and  
92 SR-KO mice with MS (2-hit group). To characterize the behavioral deficits related to SCZ symptoms and  
93 better highlight the impact of the interaction between the two risk factors, a large range of behavioral  
94 assessments was performed. The 2-hit mice showed an increase in locomotor activity (assessed with  
95 an open field test and actimeter) and an alteration in memory performances (including working  
96 memory assessed with a spontaneous alternation test in the Y-maze and recognition memory assessed  
97 with place preference in the Y-maze). These results indicate that this new 2-hit mouse model displays  
98 an interesting phenotype, with both positive and cognitive symptoms of SCZ and could therefore be  
99 considered as a robust tool for testing new therapeutic strategies.

## 100 2. Methods Materials and Methods

### 101 2.1. Animals

102 Male mice aged 2-4 months provided by our local facility (Centre Universitaire de Ressources  
103 Biologiques, Université de Caen Normandie, France) were used including wild type (WT) C57BL/6J mice  
104 and SR-KO mice originally developed in the Pr J.T. Coyle's laboratory (Belmont, MA, USA) (Basu et al.,  
105 2009). Mice were housed in polycarbonate cages (n = 5 per cage) in standard controlled conditions,  
106 including a reversed 12h-12h light-dark cycle (light on at 7:30 am), regulated temperature ( $22 \pm 2^\circ\text{C}$ ),  
107 humidity ( $50 \pm 10\%$ ) and free access to food and water. Cage enrichment consisted in crinkle cut  
108 shredded paper and a cardboard house. Experiments were performed in accordance with French and  
109 European Economic Community guidelines for the care and use of laboratory animals (2010/63/UE,  
110 project authorization n°2020121013375130 v2). Two cohorts were used to perform all behavioral  
111 experiments. 23 WT and 25 SR-KO mice were used for the first experiment and 22 WT and 29 SR-KO  
112 for the second one. Behavioral experiments are detailed on figure 1.

113

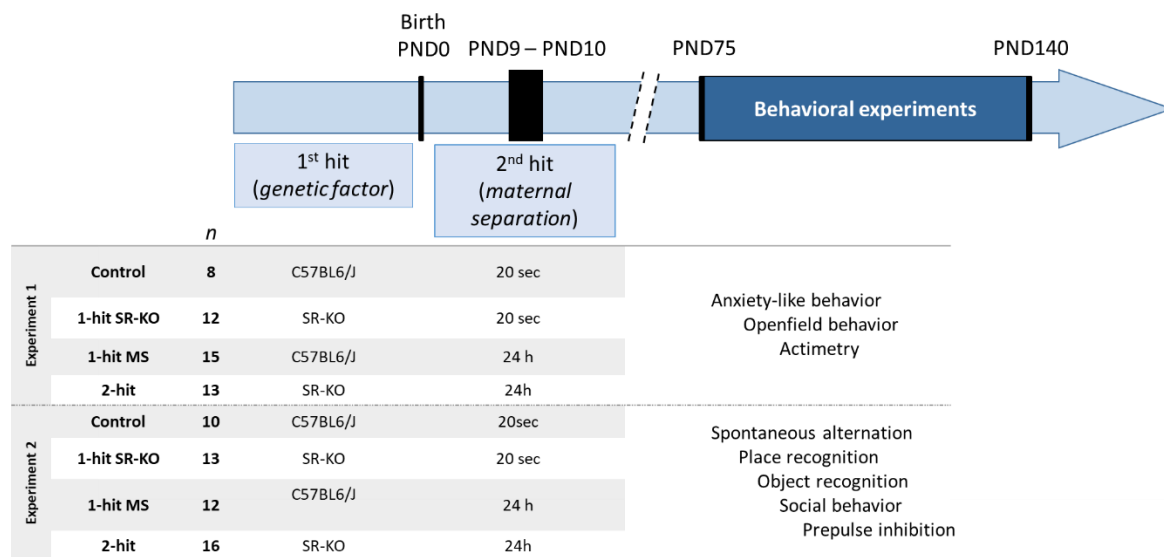
### 114 2.2. Maternal separation (MS)

115 At PND9, wild-type and SR-KO litters were separated from their mother for 24 h (early environmental  
116 stress) (Ellenbroek and Cools, 2002; Bouet et al., 2011). Mothers were removed and placed in a cage  
117 nearby (from 9:00 a.m. to 9:00 a.m., the day after). Then, the mothers were returned to their litters  
118 and left undisturbed until weaning. Control mice were submitted to the same protocol with only 20  
119 seconds of separation time.

### 120 2.3. Behavioral assessment

121 Animals were handled daily for 5 minutes during the week preceding the experiments. The  
122 experiments were conducted during the active-dark phase of the cycle and were started at 8:00 am.  
123 Each new behavioral test was carried out one week apart. Animal cages were placed in the  
124 experimental room 30 min before the beginning of each experiment. Apparatuses were cleaned with

125 alcohol (70%) between each assessment. Two sets of experiments were performed for the behavioral  
 126 assessment (Fig 1). Except for spontaneous locomotor activity (in actimeter), all behavioral tests were  
 127 videotaped and scored using EthoVision XT v.16.0 (Noldus®, The Netherlands).



128

129 **Figure 1. Animal groups and experimental design.** Two cohorts were used for all behavioral experiments. The first one was  
 130 used for experiment 1 and the second one for the experiment 2. The number of animals used for each group appears in the  
 131 "n" column. PND: post-natal day; SR-KO: serine racemase knock-out; MS: maternal separation.

132

### 2.3.1. Anxiety-like behavior

133 The maze made of gray plastic consisted of two opposite open arms (30 × 5 cm) and two opposite  
 134 closed arms (30 × 5 × 20 cm), elevated 75 cm above the floor. During 5-min free exploration, the  
 135 number of entries (four paws criterion) and the time spent in open and closed arms were recorded for  
 136 each mouse, to obtain corresponding percentages. These parameters were used to assess anxiety-like  
 137 behavior.

138

### 2.3.2. Openfield behavior

139 Mice were individually placed for 30 min in a squared open arena (50 × 50 × 50 cm). The total distance  
 140 and percentage of time spent in the center of the openfield (OF) were automatically collected (Prut  
 141 and Belzung, 2003).

142

### 2.3.3. Actimetry

143 Motor activity was measured in Plexiglas cages (19 × 11 × 14cm) with an automated actimeter  
 144 containing six lines of infrared beams (IMETRONIC®). Mice were individually placed for 30 min in cages  
 145 (19 × 11 × 14 cm), and the number of beams crossing reflecting locomotor activity (horizontal and  
 146 vertical movements) was automatically counted.

147

### 2.3.4. Spontaneous Alternation

148 Spatial working memory was assessed by spontaneous alternation in a single-session Y-maze test  
 149 (Bazin et al., 2009). The maze consisted of three equally spaced plastic arms (22 × 6.5 × 10 cm). Each  
 150 mouse was individually placed at the end of one arm, facing the front of the wall, and allowed to freely  
 151 explore the maze during a 5-min session. The sequence of arm entries (four paws criterion) was



152 collected. An alternation was defined as consecutive entries into three different arms. The alternation  
153 percentage was calculated using the formula: (number of alternations) / (total number of entries-  
154 2)\*100.

### 155 2.3.5. Place recognition

156 Place recognition was assessed in a Y-maze (Dellu et al., 2000; Asselot et al., 2017). The maze, different  
157 from that used for the spontaneous alternation test, consisted of three equally spaced arms (gray  
158 plastic; 34 × 8 × 16 cm). During the first training session, the mouse was placed in the starting arm,  
159 facing the wall, and allowed to freely explore for 5 min the maze with one arm closed by a removable  
160 door (left of right randomly), before being returned to its home cage. After a 60-min inter-trial interval,  
161 the mouse was placed again in the maze for the test session and allowed to freely explore the three  
162 arms for 2 min. The place recognition test is based on the preference of rodents for novelty, and the  
163 remembrance of the previously visited arm. During each session (training and retrieval), the time spent  
164 and the number of arm entries were recorded. A discrimination index was calculated the formula:  
165 [(time in the novel arm) – (time in the familiar arm)] / [(time in the novel arm) + (time in familiar arm)]  
166 \*100.

### 167 2.3.6. Object recognition

168 The object recognition test was performed in a Y-maze (gray plastic; 34 × 8 × 16 cm for each arm) with  
169 two different objects, available in four copies: lego® towers and sealed transparent bottles filled with  
170 sand. The protocol used to evaluate object recognition memory was based on the study by Leger et  
171 collaborators (Leger et al., 2013). The same maze as the one used for the place recognition test was  
172 used for object recognition to benefit from the habituation induced by previous exposure. During the  
173 acquisition session, two identical objects were placed in the maze in the distal parts of the arms. The  
174 mouse was placed at the end of the arm containing no object, faced to the wall and was allowed to  
175 freely explore the apparatus and the objects. Object exploration was considered when the nose of the  
176 mouse was oriented towards the object at a distance lower than or equal to 2 cm. The criterion was  
177 reached when the mouse had explored the objects for a total duration of 20 sec within a maximum of  
178 10 min, and was returned to its respective home cage for 2h until the test session ended. During the  
179 test phase, a copy of the familiar object and a novel object were placed in the maze. Again, the mouse  
180 was allowed to freely explore the maze and the objects with the same criteria. The nature of the  
181 new/familiar objects (Lego® vs bottle) and their position (in left/right arm) were randomized. The time  
182 spent to fulfill the criterion was measured. The time of exploration of each object was manually  
183 recorded and used as an index of memory performances, in comparison with the chance level (10 sec).

### 184 2.3.7. Social behavior

185 Sociability and social recognition tests were assessed with an apparatus consisting of three  
186 interconnected compartments (27 × 18 × 21 cm), with two lateral side chambers (6.5 × 18 × 21 cm). In  
187 the side compartments, two cages (8.5 cm × 16 cm in size) were positioned to ensure visual, auditory  
188 and olfactory contact between mice. To assess sociability behavior, the tested mouse was individually  
189 placed in the central compartment for 10-min free exploration. A 45-day old C57BL/6J male mouse  
190 (stimulus mouse, unknown from the tested mouse) was randomly placed in one of the two lateral  
191 chambers in the little circle cage. After 10 min, the mouse was returned to its home cage. Time spent  
192 in each compartment (i.e. close, middle, or far from the stimulus mouse) was recorded. A sociability  
193 index was calculated as follows: [(time spent close to the stimulus mouse) – (time spent in the empty

194 compartment)]/ [(time spent in the stimulus mouse compartment) + (time spent in the empty  
195 compartment)] \*100.

### 196 **2.3.8. Prepulse inhibition (PPI)**

197 PPI was measured with a startle reflex device (Imetronic®, France) (Valsamis and Schmid, 2011). Each  
198 mouse was placed in a gray soundproof chamber, on a platform mounted on a weight-sensor and  
199 surrounded with a transparent cylinder. Weight variation was used to calculate the amplitude of the  
200 startle reflex. After 10 min of acclimatization to a background white noise (65 dB), 30 trials of pulse (85  
201 dB) were performed to obtain startle reflex measurements, habituate the animal to the test, and  
202 decrease intra-individual variability. During the test phase, the mouse was subjected to 5 types of trial  
203 with an inter-trial interval of 10 to 20 s: no pulse (silence), pulse only (110 dB, 40 ms), pre-pulse (76,  
204 80 or 84 dB, 20 ms presented 50 ms before the pulse) + pulse (110 dB, 40 ms). Mice were videotaped  
205 throughout the protocol which lasted about 25 min. The percentage of prepulse inhibition was  
206 calculated for each intensity as follows:  $(1 - (\text{startle response magnitude of trials with prepulse} / \text{startle}$   
207  $\text{response magnitude of startle-only trials})) * 100$ .

### 208 **2.4. Statistics**

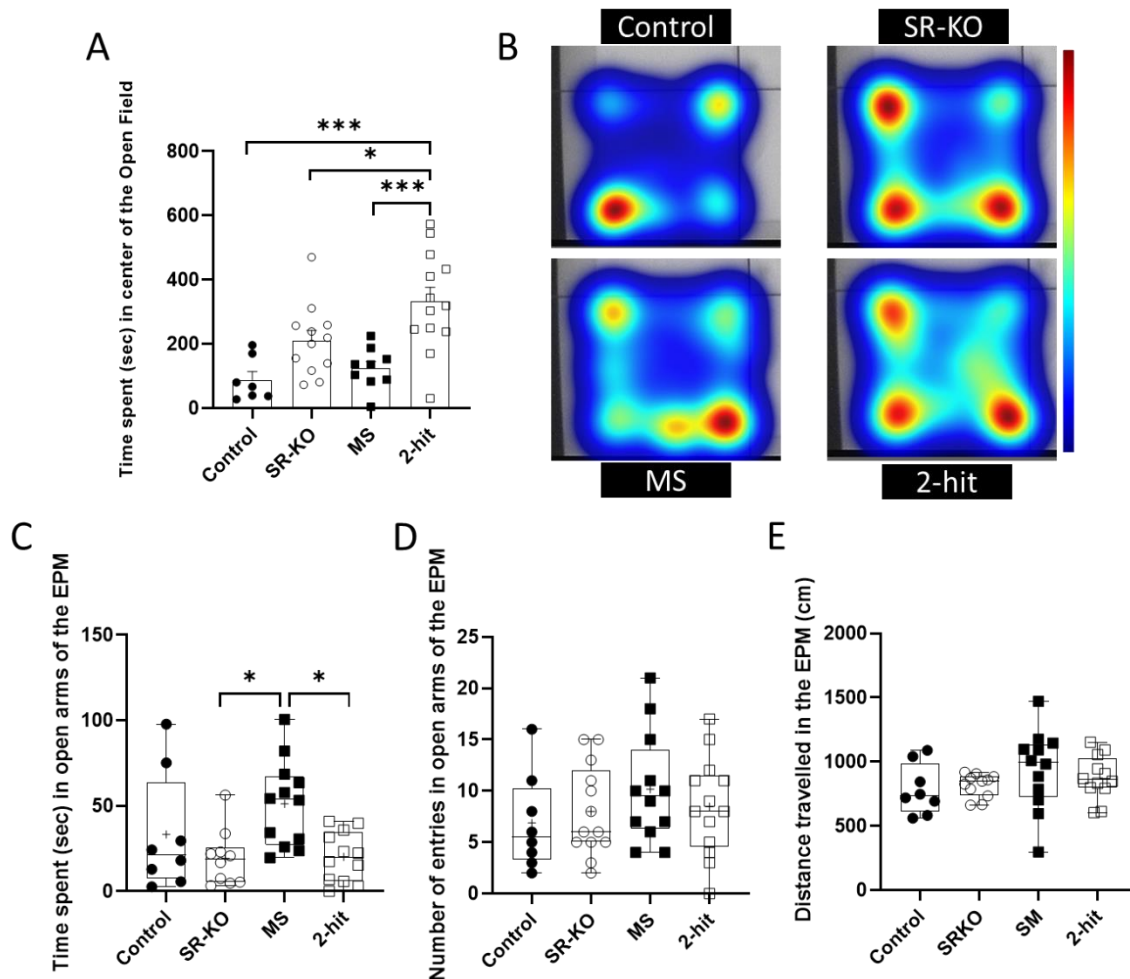
209 All analyses were performed with RStudio® software 4.2.0 and GraphPad® Prism 8.3. The normality of  
210 the data was checked using the Shapiro-Wilk test, and the homogeneity of variances was assessed with  
211 the Levene test. For data normally distributed, ANOVAs and a post-hoc Tukey honestly significant  
212 difference (HSD) test were performed and data are expressed as mean + standard error of the mean  
213 (SEM). For data not normally distributed, ANOVA with permutation as well as the post-hoc pairwise  
214 permutation test were used and data are expressed in median ± interquartile. Statistical analysis of PPI  
215 data was carried out using the nparLD package for non-parametric analysis of group and intensity  
216 effects. The one-sample t-test (parametric data) or the one-sample Wilcoxon test (non-parametric  
217 data) was used for comparison to a reference value. The difference was considered as significant when  
218  $p$  was below 0.05.

## 219 **3. Results**

### 220 **3.1. Experiment 1:**

#### 221 **3.1.1. Anxiety-like behavior in OF and EPM**

222 The time spent in the center of the open field did not differ between control and SR-KO or MS groups.  
223 On the contrary, the combination of factors disorganized the OF behavior, as highlighted by a  
224 significant increase in the time spent in the center of the OF in 2-hit mice, which was higher than all the  
225 three other groups (about 377% that of controls and above the 159% and 269% for SR-KO and SM  
226 groups respectively; Fig 2A). For the EPM test, SR-KO, SM and 2-hit groups showed no difference in the  
227 time spent in the open arms compared to the control groups. The MS group showed a significant  
228 increase compared to the SR-KO and 2-hit groups but not with the control group. Moreover, neither  
229 the number of entries in the open arms nor the distance travelled in the EPM differed between groups  
230 (Fig 2B and 2C).



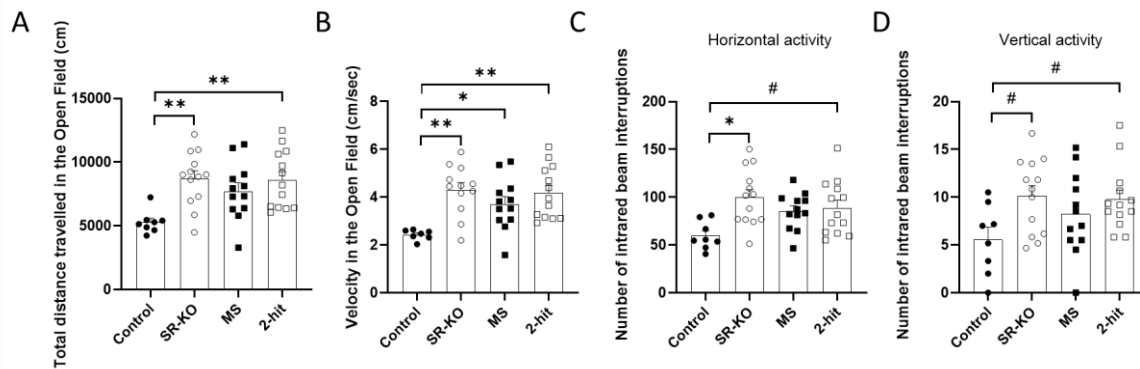
231

232 **Figure 2. The combination of SR-KO and maternal separation did not affect anxiety-like behavior.** (A) Total time spent in  
 233 the center of the open field over 30 min. Data are presented as mean + SEM. ANOVA test with post-hoc tukeyHSD: \* $<0.05$ ,  
 234 \*\*\* $<0.001$ . (B) Example of heatmaps mean for each group (n=2 for control group, n=3 for MS et SR-KO groups and n=4 for  
 235 2-hit group). The longer the mouse stays in the zone, more the color tends towards red. (C) Time spent in the open arms of  
 236 elevated-plus maze (EPM). (C) Total number of entries in the open arms of the EPM. (D) Total distance travelled for 5 min  
 237 in the EPM. Data presented are boxplots, with horizontal black lines as the median, "+" as mean and vertical black lines as  
 238 minimal and maximal. ANOVA with permutation and pairwise permutation test: \* $<0.05$ .

239

### 3.1.2. Spontaneous activity

240 The total distance travelled in the open field was significantly higher in SR-KO and 2-hit mice than in  
 241 controls (Fig 3A). Interestingly, all the three experimental groups showed a higher velocity (walking  
 242 speed) than the control group (Fig 3B). In the actimeter box, a significant increase in infrared beam  
 243 interruptions was also found in the SR-KO mice compared to control animals in both vertical (rearing)  
 244 and horizontal activity, but only a [slight increasing trend](#) for the 2-hit mice (Fig 3C and 3D).



245

246 **Figure 3. Spontaneous locomotion is affected by SR deficits combined with maternal separation.** (A) Total distance travelled  
 247 in the open field for 30 min. (B) Mean of velocity in the open field for 30 min. Number of infrared beam interruptions for (C)  
 248 horizontal and (D) vertical activity. Data presented are individual values (squares and circles) and mean  $\pm$  SEM. ANOVA test  
 249 with post-hoc tukeyHSD: #<0.1, \*<0.05, \*\*<0.01, \*\*\*<0.001.

## 250 3.2. Experiment 2:

### 251 3.2.1. Spontaneous alternation

252 Working memory was investigated in a Y-maze apparatus through spontaneous alternation. The  
 253 number of arm entries in the Y-maze was significantly higher in the 2-hit groups than in the control  
 254 groups. For the SR-KO and SM groups, the number of arms entries did not differ from control or 2-hit  
 255 groups (Fig 4A). Concerning memory performances, there was no difference in the alternation  
 256 percentage between groups. However, comparison to the chance value (50 %) showed that **while**  
 257 **control, SR-KO and MS groups displayed an alternation percentage significantly above 50%, that of the**  
 258 **2-hit group did not differ from 50%, suggesting a hazardous behavior in the Y-maze** induced by the  
 259 combination of risk factors (Fig 4B).

### 260 3.2.2. Place recognition

261 Spatial recognition memory was assessed through place recognition in Y-maze. Unexpectedly, control,  
 262 SR-KO and MS groups displayed a recognition index not different from 0, indicating no discrimination  
 263 **compared with** the novel arm. The recognition index of the 2-hit group was significantly below the  
 264 reference value of 0, suggesting that these mice had a preference **for remaining** in the familiar arm  
 265 instead of exploring the new one (Fig 4C).

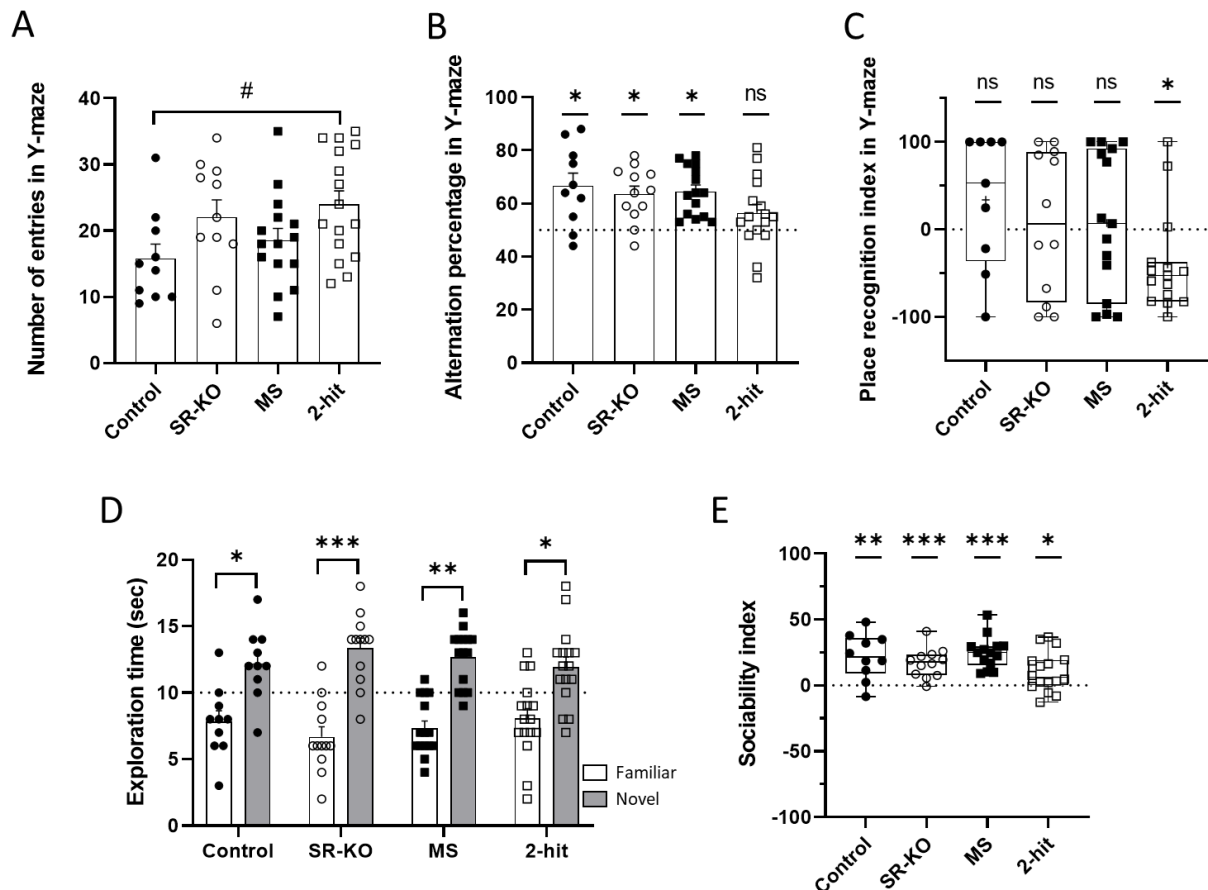
### 266 3.2.3. Object recognition

267 There was no difference in the exploration time of novel object between groups. All groups displayed  
 268 an exploration time of the novel object significantly above 10 and significantly different from the time  
 269 exploration of the familiar one, indicating that all groups explored the new object significantly more  
 270 than the familiar one (Fig 4D).

271

### 272 3.2.4. Social behavior

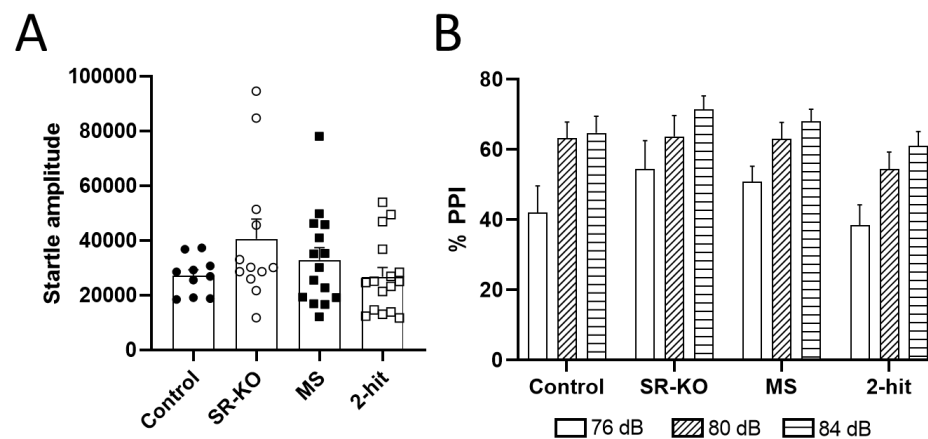
273 There was no difference between groups for the sociability index. All groups displayed a sociability  
 274 index above 0, indicating a preference for the new congener (Fig 4E).



275  
 276 **Figure 4. SR-KO combined with MS impairs working memory and recognition.** (A) Number of entries in the Y-maze. (B)  
 277 Alternation percentage in the Y-maze. (C) Place recognition index in Y-maze. (D) Exploration time of the familiar (white  
 278 histogram) and novel (gray histogram) object during the retention phase of an object recognition test. (E) Sociability index.  
 279 For A, B and D, data are presented as mean  $\pm$  SEM. For C and E data are boxplots, with horizontal black lines as medians and  
 280 vertical black lines as minimum and maximum. Intergroup comparisons between groups were performed using ANOVA test  
 281 with post-hoc tukeyHSD ( $\# < 0.1$ , \*  $< 0.05$ , \*\*  $< 0.01$ , \*\*\*  $< 0.001$ ) and comparison to a reference value was performed with a  
 282 one-sample t-test or one-sample Wilcoxon test: \*  $< 0.05$ ; \*\*  $< 0.01$ , \*\*\*  $< 0.001$ .

### 283 3.2.5. Prepulse inhibition (PPI)

284 The amplitude of the startle reflex triggered by an 85dB stimulus was not different between groups,  
 285 (Fig 5A). Also, the percent of PPI was not affected and each group showed similar prepulse intensity  
 286 effect (Fig 5B). These results [point to](#) an absence of deficits in sensorimotor gating of the acoustic reflex  
 287 in our experimental groups.



288  
 289 **Figure 5. Sensorimotor gating is not altered in SR-KO, MS and 2-hit groups.** (A) Startle reflex amplitude triggered by a single  
 290 85dB pulse, and (B) Prepulse inhibition (PPI) for increasing pre-pulse intensities (76 dB, 80 dB, 84 dB) in control, SR-KO, MS  
 291 and 2-hit groups. ANOVA with two factors (intensity x group) revealed an intensity effect for all groups ( $p$  value < 0.0001).  
 292 Data are presented as mean + SEM.

#### 293 4. Discussion

294 This study aimed at characterizing the behavioral phenotype of a new 2-hit model **with behavioral and**  
 295 **cognitive deficits** based on the combination of **two risk factors including** a deletion of serine racemase  
 296 gene (SR-KO; 1<sup>st</sup> hit) that reproduces the SCZ-related glutamatergic hypofunction and a maternal  
 297 separation (MS; 2<sup>nd</sup> hit) mimicking an early environmental stress. The hypothesis was that the genetic  
 298 deletion would favor the vulnerability to the second risk factor (Guerrin et al., 2021). We showed here  
 299 that the 2-hit mice displayed an increase in locomotor activity in three experimental protocols (open  
 300 field, actimeter, and in Y-maze), as well as **limited** deficits in working memory (spontaneous alternation  
 301 in the Y-maze) and in spatial recognition memory (place recognition test). On the contrary, the  
 302 sociability-related behavior and the sensorimotor gating of 2-hit mice were not affected. This new  
 303 animal model therefore presents a partial schizophrenic-like phenotype, with not only **positive**-like  
 304 symptoms but also cognitive deficits, in contrast to most of the other 2-hit models **currently** available.

305 The genetic risk factor was selected to reproduce an altered activity of the NMDAR according to the  
 306 glutamate hypofunction hypothesis of SCZ (Uno and Coyle, 2019). The NMDAR plays an essential role  
 307 in cortical function but also in brain synaptic plasticity, underlying learning, memory, and other  
 308 cognitive functions (Morris et al., 1990; Bliss and Collingridge, 1993; Izquierdo and Medina, 1995). SR-  
 309 KO mice carry a deletion of the first exon of the SR gene, inducing 90% decrease in **brain levels of** the  
 310 NMDA co-agonist D-serine (Basu et al., 2009; Ploux et al., 2020). **Current evidence indicates** that these  
 311 mice display subtle but significant behavioral abnormalities (Basu et al., 2009; Labrie et al., 2009; Mori  
 312 and Inoue, 2010; Sullivan et al., 2011; DeVito et al., 2011; Balu et al., 2013; Hagiwara et al., 2013; Jacobi  
 313 et al., 2019; Ploux et al., 2020; Aguilar et al., 2021; Torres Jimenez et al., 2021; Jami et al., 2021) **which**  
 314 **could be amplify by** additional **disruptors** such as those generated by environmental changes. Although  
 315 many environmental risk factors have been pointed in SCZ, childhood trauma including physical or  
 316 psychological abuse and neglect (Larsson et al., 2013; Misdrahi, 2016; Okkels et al., 2017) **are among**  
 317 the most **predominantly studied** so far. It is reproduced in preclinical studies **through** a wide range of  
 318 MS paradigms (Nishi et al., 2013; Marco et al., 2015). Among them, **we have previously shown** that MS  
 319 **applied** for 24h at PND 9 induced behavioral disabilities in mice (increased anxiety levels and decreased

320 social behavior (Bouet et al., 2011)), which could possibly increase the genetic-related defects in a 2-  
321 hit strategy.

322 The first major phenotype displayed by the 2-hit mice model is an increase in parameters related to  
323 locomotion (velocity and total distance, horizontal and vertical activities) which have been considered  
324 to mimic positive-like symptoms of SCZ (Van Den Buuse, 2010). The fact that the hyperlocomotion was  
325 found in the 2-hit and SR-KO (Basu et al., 2009) mice but not in the MS group shows that a genetically-  
326 induced glutamate hypofunction plays a major role in this deficit. Indeed, this behavioral impairment  
327 is often observed in pharmacologically-induced SCZ models of dopaminergic hyperactivity but also of  
328 glutamatergic hypofunction (Ogren and Goldstein, 1994; Gleason and Shannon, 1997; Carey et al.,  
329 1998; Enkel et al., 2013; Akilliglu and Karadepe, 2021). For example, treatments with the  
330 noncompetitive NMDAR antagonists phencyclidine (PCP) or MK-801 induce hyperlocomotion (Jentsch  
331 et al., 1998; Enomoto et al., 2007; Kehrer, 2008). Besides, mice deprived of the NR1 subunit of the  
332 NMDAR also display an increase in locomotor activity associated with stereotypies (Mohn et al., 1999;  
333 Halene et al., 2009). This behavioral signature is also found in mice with genetic deletion of the  
334 Disrupted in schizophrenia 1 gene (DISC1) (Ibi et al., 2010; Ma et al., 2013; Lipina and Roder, 2014),  
335 one of the genes recognized to be associated with SCZ (Hennah et al., 2005), notably due to its  
336 implication in glutamatergic neurotransmission and in the stabilization of SR (Ma et al., 2013; Jacobi et  
337 al., 2019). The fact that the hyperlocomotion was not higher in 2-hit than in SR-KO mice suggests a  
338 minor, if any, contribution of the MS to this particular phenotype.

339 In addition, other aspects of the locomotor activity more related to anxiety-like behavior, also suggest  
340 a specific signature in the 2-hit mice. For example, this group is the one which spent the longer time in  
341 the center of the OF (discrepancy with normal behavior), while the SR-KO and MS mice were not  
342 different from controls, thus pointing to a synergetic effect of the risk factors. However, this synergy  
343 remains to be fully established. Indeed, glutamatergic hypofunction has been rather linked to an  
344 elevation in anxiety levels in other experimental conditions such as pharmacological NMDAR blockade  
345 (McLean et al., 2010; Amani et al., 2013; Enkel et al., 2013; Akilliglu and Karadepe, 2021). In contrast,  
346 increase in time spent in the center compared to the control has previously been reported in MS  
347 models (Ito et al., 2010; Lussier and Stevens, 2016; Shin and Lee, 2023). This kind of behavior may refer  
348 to reflect a lower anxiety-like level in the 2-hit mice than the other groups suggesting a behavioral  
349 disinhibition process (or absence of inhibition). The behavioral disinhibition can be defined as a lack of  
350 control of motor skills, attention and concentration, and can be similarly found in people with  
351 impulsivity, lack of control, inappropriate euphoria or socially unacceptable behavior (Derryberry and  
352 Rothbart, 1997; Kochanska et al., 1997). It is often studied in several comorbid diseases with SCZ, such  
353 as bipolarity, Attention Deficit Disorder with or without Hyperactivity (ADHD) or autism (Stevens et al.,  
354 2002; Hirshfeld-Becker et al., 2003; Kempf et al., 2005; Buckley et al., 2009; Arfaie et al., 2018; Popovic  
355 et al., 2019; Hossain et al., 2020; Chien et al., 2021). This type of behavior, to our knowledge, is not  
356 found in other 2-hit models, suggesting a characteristic behavior of our model (see Guerrin et al.,  
357 2021).

358 Working memory impairment is an important feature of cognitive deficits observed in schizophrenic  
359 patients (Conklin et al., 2005; Kebir and Tabbane, 2008; Timofeeva and Levin, 2011b). Paradoxically,  
360 this aspect has been rather neglected in preclinical studies using pharmacologically-induced SCZ-  
361 related deficits and only few studies using 2-hit models have assessed this parameter (Choy et al.,  
362 2009; Schroeder et al., 2015; Guerrin et al., 2021). Indeed, another 2-hit model using 24h MS in PN9

363 rats combined with a treatment of 100 mg corticosterone (weeks 8 – 10) did not display synergistic  
364 effects on working memory (Choy et al., 2008). On the contrary, a synergistic effect of 50 mg  
365 corticosterone treatment (weeks 6 – 9) combined with genetic deletion of *Reelin* has been reported  
366 (Schroeder et al., 2015). Interestingly, our results of the Y-maze test also revealed a synergy between  
367 the two risk factors. Indeed, when SR-KO or MS groups had similar performances as control mice, a  
368 deficit occurred when these two hits were combined. Once again, our new model confirms that  
369 interactions between several contributing factors are essential for the development of the SCZ-related  
370 phenotype and provide further evidence for a higher face validity compared to other available 2-hit  
371 models.

372 The sensorimotor gating abnormality, which is observed in SCZ (San-Martin et al., 2020), is generally  
373 assessed in preclinical studies through the prepulse inhibition (PPI) deficits test (Bullock et al., 1997;  
374 Swerdlow and Light, 2018). In the present study, we did not observe any PPI changes restricting the  
375 face validity of our 2-hit model, whatever the experimental condition. First, the absence of  
376 sensorimotor gating deficit in SR-KO mice (see also Basu et al., 2009) indicates that the NMDAR  
377 hypofunction generated by the D-serine depletion is not sufficient per se to affect this behavioral trait  
378 in contrast to pharmacological treatments with the NMDAR antagonists PCP and MK-801 (Curzon and  
379 Decker, 1998; Bubeníková et al., 2005; Rasmussen et al., 2007). Secondly, we did not reproduce PPI  
380 disruption in the MS model compared to previous observations (see Ellenbroek et al., 1996, 1998;  
381 Ellenbroek and Cools, 2002). Lastly, the absence of deficit in the 2-hit group suggests that a putative  
382 synergy between SR-KO and MS-related factors is not enough to affect the sensorimotor gating of the  
383 mice. The presence of PPI alteration is also more heterogeneous in other 2-hit models (Boucher et al.,  
384 2007, 2011; Haque et al., 2012; Lim et al., 2012; Zamberletti et al., 2012; Long et al., 2013; Lukasz et  
385 al., 2013; O'Leary et al., 2014; Howell and Pillai, 2016; Khan and Powell, 2018). For example, 2-hit  
386 models combining MK-801 treatment with social isolation displays additive deleterious effects on PPI,  
387 meaning that the deficit found in 2-hit group is similar to the one found in 1-hit groups (Lim et al.,  
388 2012). Interestingly, 2-hit models combining the deletion of *Nurr1* with social isolation or maternal  
389 immune activation present a synergistic effect on PPI deficit (Eells et al., 2006; Vuillermot et al., 2012).  
390 It has been suggested that the disturbance induced in the dopaminergic system could be linked to the  
391 disruption of PPI (Ellenbroek et al., 1996, 1998; Ellenbroek and Cools, 2000). Thus, in our model, it may  
392 be necessary to verify the presence or absence of alterations in this neurotransmission system using  
393 electrophysiological or immunological studies.

394 Finally, our study does not reveal any disruption in social behavior, neither in the 2-hit nor in the 1-hit  
395 groups. Alteration of sociability has previously been reported in mice submitted to MS (Bouet et al.,  
396 2011) whereas a defect in SR-KO mice is a matter of controversy (Labrie et al., 2009; Matveeva et al.,  
397 2019; DeVito et al., 2011; Aguilar et al., 2021). Several explanations may account for these  
398 discrepancies (Nishi et al., 2013) including differences in protocols and/or strains. On the one hand,  
399 we used C57BL/6J mice in the present study whereas NMRI mice had been previously selected (Bouet  
400 et al., 2011) which could be more sensitive to MS (Own and Patel, 2013; Powell and Swerdlow, 2023).  
401 In the previous study, Bouet et al. (2011) used an approach-avoidance test instead. This test consists  
402 of placing the stimulus mouse behind a wall with holes that may decrease the contact between  
403 animals, lowering the social reward, and rendering the task more difficult. In two studies of  
404 multifactorial models, social deficits were observed only if MS was combined with other genetic and/or  
405 environmental factors (Sultana and Lee, 2020; Bouet et al., 2021). On the other hand, the parameter  
406 that we used is maybe not sufficient to highlight the social deficit in the model. Indeed, it is found that



407 SR-KO mice displayed abnormal social investigation and vocalizations in the presence of a conspecific  
408 (Matveeva et al., 2019). We can assume that our analysis of social behavioral is limited and that the  
409 assessment of more subtle changes, such as those in vocalization or sniffing, grooming and licking  
410 would be interesting to [study in further detail](#). One future direction [could](#) be to assess social behaviors  
411 directly in home cages, in order to highlight specific social behaviors in a familiar environment (Fairless  
412 et al., 2013; Kim et al., 2019).

413 To conclude, this model based on the “two-hit hypothesis” of SCZ (Davis et al., 2016; Guerrin et al.,  
414 2021) contributes to better [understand](#) the interactions between two risk factors of SCZ, a genetic risk  
415 factor (deletion of serine racemase) and an environmental risk factor (maternal separation). It is the  
416 first time these risk factors have been combined in an animal model and their interaction results in a  
417 partial phenotype of SCZ with the presence of both positive (hyperlocomotion) and cognitive  
418 dysfunction (working memory deficit, disinhibition). The presence of cognitive deficits in this model  
419 constitutes an attractive phenotype to develop new therapeutic drugs against these [types](#) of deficits  
420 in SCZ. The lack of deficits in other parameters may be due to the behavioral tests used. Our tests are  
421 brief (generally 5 to 10 min of testing) and need to place the animals in a new environment to which  
422 they must adapt. Thus, these tests are highly sensitive to external environmental conditions, which  
423 can disrupt the protocol (e.g. light, noise, smells or time of day). The “automated home cage  
424 monitoring” [method](#) has been proposed to be more relevant to measure behavioral deficits and to test  
425 the efficacy of new treatments in preclinical research (Jhuang et al., 2010; Robinson and Riedel, 2014;  
426 Mingrone et al., 2020; Ho et al., 2023). The advantage of these cages is that they can monitor the  
427 behavior of rodents to be recorded directly in their home cage over a long period with minimal human  
428 contact (Bains et al., 2018; Ho et al., 2023). For example, this monitoring directly in the home cage has  
429 made it possible to detect subtle and early phenotypes in the mouse model of Huntington's disease  
430 compared to the control C57BL6/J mice (Bains et al., 2023). Thus, this could therefore be useful for  
431 assessing more specifically the phenotype of the 2-hit [animal](#) model, which appears to display subtler,  
432 but richer, behavioral deficits than the mono-factorial models. [It could also make it possible to observe  
433 the effects of subsequent pharmacological treatment.](#)

434 **Funding:** This work was supported by the University of Caen Normandy, Normandy Region, INSERM,  
435 and FHU A<sup>2</sup>M<sup>2</sup>P. The authors declare no conflict of interest.

436 **Declaration of competing interest:** The authors declare no conflict of interest

437 **Institutional Review Board Statement:** Experiments were performed in accordance with French and  
438 European Economic Community guidelines for the care and use of laboratory animals (2010/63/UE,  
439 project n°2021102816063575 v2, date of approval 2022/04/25).

440 **Acknowledgements:**

441 [We are grateful to Sophie Pricot, as native English-speakers, who accepted to proofread the present  
442 manuscript.](#)

443 This work was supported by the University of Caen Normandy, Normandy Region, INSERM, and FHU  
444 A<sup>2</sup>M<sup>2</sup>P. The authors declare no conflict of interest.

445 **References**

446 Addington, J., Addington, D., and Maticka-Tyndale, E. (1991). Cognitive functioning and positive and

- 447 negative symptoms in schizophrenia. *Schizophr. Res.* 5, 123–134. doi: 10.1016/0920-  
448 9964(91)90039-T
- 449 Aguilar, D. D., Radzik, L. K., Schiffino, F. L., Folorunso, O. O., Zielinski, M. R., Coyle, J. T., et al. (2021).  
450 Altered neural oscillations and behavior in a genetic mouse model of NMDA receptor  
451 hypofunction. *Sci. Rep.* 11, 9031. doi: 10.1038/s41598-021-88428-9
- 452 Akillioglu, K., and Karadepe, M. (2021). Effect Neonatal Ketamine Treatment on Exploratory and  
453 Anxiety-like Behaviours in Adulthood. *Clin. Psychopharmacol. Neurosci.* 19, 93–103. doi:  
454 10.9758/cpn.2021.19.1.93
- 455 Amani, M., Samadi, H., Doosti, M.-H., Azarfarin, M., Bakhtiari, A., Majidi-Zolbanin, N., et al. (2013).  
456 Neonatal NMDA receptor blockade alters anxiety- and depression-related behaviors in a sex-  
457 dependent manner in mice. *Neuropharmacology* 73, 87–97. doi:  
458 10.1016/j.neuropharm.2013.04.056
- 459 Arfaie, A., Safikhanelou, S., Bakhshipour Roodsari, A., Farnam, A., and Shafiee-Kandjani, A. R. (2018).  
460 Assessment of Behavioral Approach and Behavioral Inhibition Systems in Mood Disorders. *Basic*  
461 *Clin. Neurosci.* 9, 261–268. doi: 10.32598/bcn.9.4.261
- 462 Asselot, R., Simon-O'Brien, E., Lebourgeois, S., Nee, G., Delaunay, V., Duchatelle, P., et al. (2017).  
463 Time-dependent impact of glutamatergic modulators on the promnesiant effect of 5-HT6R  
464 blockade on mice recognition memory. *Pharmacol. Res.* 118, 111–118. doi:  
465 10.1016/j.phrs.2016.06.009
- 466 Bains, R. S., Forrest, H., Sillito, R. R., Armstrong, J. D., Stewart, M., Nolan, P. M., et al. (2023).  
467 Longitudinal home-cage automated assessment of climbing behavior shows sexual dimorphism  
468 and aging-related decrease in C57BL/6J healthy mice and allows early detection of motor  
469 impairment in the N171-82Q mouse model of Huntington's disease. *Front. Behav. Neurosci.* 17,  
470 1148172. doi: 10.3389/fnbeh.2023.1148172
- 471 Bains, R. S., Wells, S., Sillito, R. R., Armstrong, J. D., Cater, H. L., Banks, G., et al. (2018). Assessing  
472 mouse behaviour throughout the light/dark cycle using automated in-cage analysis tools. *J.*  
473 *Neurosci. Methods* 300, 37–47. doi: 10.1016/j.jneumeth.2017.04.014
- 474 Balu, D. T., Li, Y., Puhl, M. D., Benneyworth, M. A., Basu, A. C., Takagi, S., et al. (2013). Multiple risk  
475 pathways for schizophrenia converge in serine racemase knockout mice, a mouse model of  
476 NMDA receptor hypofunction. *Proc. Natl. Acad. Sci. U. S. A.* 110, E2400-9. doi:  
477 10.1073/pnas.1304308110
- 478 Basu, A. C., Tsai, G. E., Ma, C. L., Ehmsen, J. T., Mustafa, A. K., Han, L., et al. (2009). Targeted  
479 disruption of serine racemase affects glutamatergic neurotransmission and behavior. *Mol.*  
480 *Psychiatry* 14, 719–727. doi: 10.1038/mp.2008.130
- 481 Bazin, M. A., Kihel, L. El, Boulouard, M., Bouët, V., and Rault, S. (2009). The effects of DHEA, 3 $\beta$ -  
482 hydroxy-5 $\alpha$ -androstane-6,17-dione, and 7-amino-DHEA analogues on short term and long term  
483 memory in the mouse. *Steroids* 74, 931–937. doi: 10.1016/j.steroids.2009.06.010
- 484 Bliss, T. V. P., and Collingridge, G. L. (1993). A synaptic model of memory: long-term potentiation in  
485 the hippocampus. *Nature* 361, 31–39. doi: 10.1038/361031a0
- 486 Boucher, A. A., Arnold, J. C., Duffy, L., Schofield, P. R., Micheau, J., and Karl, T. (2007). Heterozygous  
487 neuregulin 1 mice are more sensitive to the behavioural effects of  $\Delta$ 9-tetrahydrocannabinol.  
488 *Psychopharmacology (Berl)*. 192, 325–336. doi: 10.1007/s00213-007-0721-3
- 489 Boucher, A. A., Hunt, G. E., Micheau, J., Huang, X., McGregor, I. S., Karl, T., et al. (2011). The  
490 schizophrenia susceptibility gene neuregulin 1 modulates tolerance to the effects of

- 491           cannabinoids. *Int. J. Neuropsychopharmacol.* 14, 631–643. doi: 10.1017/S146114571000091X
- 492 Bouet, V., Lecrux, B., Tran, G., and Freret, T. (2011). Effect of pre- versus post-weaning environmental  
493 disturbances on social behaviour in mice. *Neurosci. Lett.* 488, 221–224. doi:  
494 10.1016/j.neulet.2010.11.033
- 495 Bouet, V., Percelay, S., Leroux, E., Diarra, B., Léger, M., Delcroix, N., et al. (2021). A new 3-hit mouse  
496 model of schizophrenia built on genetic, early and late factors. *Schizophr. Res.* 228, 519–528.  
497 doi: 10.1016/j.schres.2020.11.043
- 498 Brown, A. S. (2011). The environment and susceptibility to schizophrenia. *Prog. Neurobiol.* 93, 23–58.  
499 doi: 10.1016/j.pneurobio.2010.09.003
- 500 Bubeníková, V., Votava, M., Horáček, J., Páleníček, T., and Dockery, C. (2005). The effect of zotepine,  
501 risperidone, clozapine and olanzapine on MK-801-disrupted sensorimotor gating. *Pharmacol.*  
502 *Biochem. Behav.* 80, 591–6. doi: 10.1016/j.pbb.2005.01.012
- 503 Buckley, P. F., Miller, B. J., Lehrer, D. S., and Castle, D. J. (2009). Psychiatric comorbidities and  
504 schizophrenia. *Schizophr. Bull.* 35, 383–402. doi: 10.1093/schbul/sbn135
- 505 Bullock, A. E., Slobe, B. S., Vázquez, V., and Collins, A. C. (1997). Inbred mouse strains differ in the  
506 regulation of startle and prepulse inhibition of the startle response. *Behav. Neurosci.* 111,  
507 1353–1360. doi: 10.1037/0735-7044.111.6.1353
- 508 Carey, R. J., Dai, H., and Gui, J. (1998). Effects of dizocilpine (MK-801) on motor activity and memory.  
509 *Psychopharmacology (Berl)*. 137, 241–6. doi: 10.1007/s002130050616
- 510 Čater, M., and Majdič, G. (2022). How early maternal deprivation changes the brain and behavior?  
511 *Eur. J. Neurosci.* 55, 2058–2075. doi: 10.1111/ejn.15238
- 512 Chien, Y.-L., Wu, C.-S., and Tsai, H.-J. (2021). The Comorbidity of Schizophrenia Spectrum and Mood  
513 Disorders in Autism Spectrum Disorder. *Autism Res.* 14, 571–581. doi: 10.1002/aur.2451
- 514 Choy, K. H. C., de Visser, Y., Nichols, N. R., and van den Buuse, M. (2008). Combined neonatal stress  
515 and young-adult glucocorticoid stimulation in rats reduce BDNF expression in hippocampus:  
516 effects on learning and memory. *Hippocampus* 18, 655–67. doi: 10.1002/hipo.20425
- 517 Choy, K. H. C., de Visser, Y. P., and van den Buuse, M. (2009). The effect of “two hit” neonatal and  
518 young-adult stress on dopaminergic modulation of prepulse inhibition and dopamine receptor  
519 density. *Br. J. Pharmacol.* 156, 388–96. doi: 10.1111/j.1476-5381.2008.00008.x
- 520 Conklin, H. M., Curtis, C. E., Calkins, M. E., and Iacono, W. G. (2005). Working memory functioning in  
521 schizophrenia patients and their first-degree relatives: Cognitive functioning shedding light on  
522 etiology. *Neuropsychologia* 43, 930–942. doi: 10.1016/j.neuropsychologia.2004.09.013
- 523 Correll, C. U., and Howes, O. D. (2021). Treatment-Resistant Schizophrenia: Definition, Predictors,  
524 and Therapy Options. *J. Clin. Psychiatry* 82. doi: 10.4088/JCP.MY20096AH1C
- 525 Curzon, P., and Decker, M. W. (1998). Effects of phencyclidine (PCP) and (+)MK-801 on sensorimotor  
526 gating in CD-1 mice. *Prog. Neuropsychopharmacol. Biol. Psychiatry* 22, 129–46. doi:  
527 10.1016/s0278-5846(97)00184-x
- 528 Davis, J., Eyre, H., Jacka, F. N., Dodd, S., Dean, O., McEwen, S., et al. (2016). A review of vulnerability  
529 and risks for schizophrenia: Beyond the two hit hypothesis. *Neurosci. Biobehav. Rev.* 65, 185–  
530 194. doi: 10.1016/j.neubiorev.2016.03.017
- 531 Dellu, F., Contarino, A., Simon, H., Koob, G. F., and Gold, L. H. (2000). Genetic differences in response  
532 to novelty and spatial memory using a two-trial recognition task in mice. *Neurobiol. Learn.*

- 533 *Mem.* 73, 31–48. doi: 10.1006/nlme.1999.3919
- 534 Derryberry, D., and Rothbart, M. K. (1997). Reactive and effortful processes in the organization of  
535 temperament. *Dev. Psychopathol.* 9, 633–52. doi: 10.1017/s0954579497001375
- 536 DeVito, L. M., Balu, D. T., Kanter, B. R., Lykken, C., Basu, A. C., Coyle, J. T., et al. (2011). Serine  
537 racemase deletion disrupts memory for order and alters cortical dendritic morphology. *Genes.*  
538 *Brain. Behav.* 10, 210–22. doi: 10.1111/j.1601-183X.2010.00656.x
- 539 Eells, J. B., Mislser, J. A., and Nikodem, V. M. (2006). Early postnatal isolation reduces dopamine levels,  
540 elevates dopamine turnover and specifically disrupts prepulse inhibition in Nurr1-null  
541 heterozygous mice. *Neuroscience* 140, 1117–1126. doi: 10.1016/j.neuroscience.2005.12.065
- 542 Ellenbroek, B. ., Budde, S., and Cools, A. . (1996). Prepulse inhibition and latent inhibition: the role of  
543 dopamine in the medial prefrontal cortex. *Neuroscience* 75, 535–542. doi: 10.1016/0306-  
544 4522(96)00307-7
- 545 Ellenbroek, B. A., and Cools, A. R. (2000). Animal models for the negative symptoms of schizophrenia.  
546 *Behav. Pharmacol.* 11, 223–233.
- 547 Ellenbroek, B. A., and Cools, A. R. (2002). Early maternal deprivation and prepulse inhibition: the role  
548 of the postdeprivation environment. *Pharmacol. Biochem. Behav.* 73, 177–184. doi:  
549 10.1016/s0091-3057(02)00794-3
- 550 Ellenbroek, B. A., and Riva, M. A. (2003). Early maternal deprivation as an animal model for  
551 schizophrenia. *Clin. Neurosci. Res.* 3, 297–302. doi: 10.1016/S1566-2772(03)00090-2
- 552 Ellenbroek, B. A., van den Kroonenberg, P. T., and Cools, A. R. (1998). The effects of an early stressful  
553 life event on sensorimotor gating in adult rats. *Schizophr. Res.* 30, 251–260. doi: 10.1016/s0920-  
554 9964(97)00149-7
- 555 Enkel, T., Thomas, M., and Bartsch, D. (2013). Differential effects of subchronic phencyclidine on  
556 anxiety in the light-enhanced startle-, light/dark exploration- and open field tests. *Behav. Brain*  
557 *Res.* 243, 61–5. doi: 10.1016/j.bbr.2012.12.060
- 558 Enomoto, T., Noda, Y., and Nabeshima, T. (2007). Phencyclidine and genetic animal models of  
559 schizophrenia developed in relation to the glutamate hypothesis. *Methods Find. Exp. Clin.*  
560 *Pharmacol.* 29, 291. doi: 10.1358/mf.2007.29.4.1075358
- 561 Fabricius, K., Wörtwein, G., and Pakkenberg, B. (2008). The impact of maternal separation on adult  
562 mouse behaviour and on the total neuron number in the mouse hippocampus. *Brain Struct.*  
563 *Funct.* 212, 403–416. doi: 10.1007/s00429-007-0169-6
- 564 Fairless, A. H., Katz, J. M., Vijayvargiya, N., Dow, H. C., Kreibich, A. S., Berrettini, W. H., et al. (2013).  
565 Development of home cage social behaviors in BALB/cJ vs. C57BL/6J mice. *Behav. Brain Res.*  
566 237, 338–47. doi: 10.1016/j.bbr.2012.08.051
- 567 Gleason, S. D., and Shannon, H. E. (1997). Blockade of phencyclidine-induced hyperlocomotion by  
568 olanzapine, clozapine and serotonin receptor subtype selective antagonists in mice.  
569 *Psychopharmacology (Berl)*. 129, 79–84. doi: 10.1007/s002130050165
- 570 Goltsov, A. Y., Loseva, J. G., Andreeva, T. V., Grigorenko, A. P., Abramova, L. I., Kaleda, V. G., et al.  
571 (2006). Polymorphism in the 5'-promoter region of serine racemase gene in schizophrenia. *Mol.*  
572 *Psychiatry* 11, 325–326. doi: 10.1038/sj.mp.4001801
- 573 Guerrin, C. G. J., Doorduyn, J., Sommer, I. E., and de Vries, E. F. J. (2021). The dual hit hypothesis of  
574 schizophrenia: Evidence from animal models. *Neurosci. Biobehav. Rev.* 131, 1150–1168. doi:  
575 10.1016/j.neubiorev.2021.10.025

- 576 Hagiwara, H., Iyo, M., and Hashimoto, K. (2013). Neonatal Disruption of Serine Racemase Causes  
577 Schizophrenia-Like Behavioral Abnormalities in Adulthood: Clinical Rescue by D-Serine. *PLoS*  
578 *One* 8, e62438. doi: 10.1371/journal.pone.0062438
- 579 Halene, T. B., Ehrlichman, R. S., Liang, Y., Christian, E. P., Jonak, G. J., Gur, T. L., et al. (2009).  
580 Assessment of NMDA receptor NR1 subunit hypofunction in mice as a model for schizophrenia.  
581 *Genes, Brain Behav.* 8, 661–675. doi: 10.1111/j.1601-183X.2009.00504.x
- 582 Haque, F. N., Lipina, T. V, Roder, J. C., and Wong, A. H. C. (2012). Social defeat interacts with Disc1  
583 mutations in the mouse to affect behavior. *Behav. Brain Res.* 233, 337–344. doi:  
584 10.1016/j.bbr.2012.05.037
- 585 Hennah, W., Thomson, P., Peltonen, L., and Porteous, D. (2005). Genes and Schizophrenia: Beyond  
586 Schizophrenia: The Role of DISC1 in Major Mental Illness. *Schizophr. Bull.* 32, 409–416. doi:  
587 10.1093/schbul/sbj079
- 588 Hirshfeld-Becker, D. R., Biederman, J., Calltharp, S., Rosenbaum, E. D., Faraone, S. V, and Rosenbaum,  
589 J. F. (2003). Behavioral inhibition and disinhibition as hypothesized precursors to  
590 psychopathology: implications for pediatric bipolar disorder. *Biol. Psychiatry* 53, 985–99. doi:  
591 10.1016/s0006-3223(03)00316-0
- 592 Ho, H., Kejzar, N., Sasaguri, H., Saito, T., Saido, T. C., De Strooper, B., et al. (2023). A fully automated  
593 home cage for long-term continuous phenotyping of mouse cognition and behavior. *Cell reports*  
594 *methods* 3, 100532. doi: 10.1016/j.crmeth.2023.100532
- 595 Hossain, M. M., Khan, N., Sultana, A., Ma, P., McKyer, E. L. J., Ahmed, H. U., et al. (2020). Prevalence  
596 of comorbid psychiatric disorders among people with autism spectrum disorder: An umbrella  
597 review of systematic reviews and meta-analyses. *Psychiatry Res.* 287, 112922. doi:  
598 10.1016/j.psychres.2020.112922
- 599 Howell, K. R., and Pillai, A. (2016). Long-Term Effects of Prenatal Hypoxia on Schizophrenia-Like  
600 Phenotype in Heterozygous Reeler Mice. *Mol. Neurobiol.* 53, 3267–3276. doi: 10.1007/s12035-  
601 015-9265-4
- 602 Ibi, D., Nagai, T., Koike, H., Kitahara, Y., Mizoguchi, H., Niwa, M., et al. (2010). Combined effect of  
603 neonatal immune activation and mutant DISC1 on phenotypic changes in adulthood. *Behav.*  
604 *Brain Res.* 206, 32–37. doi: 10.1016/j.bbr.2009.08.027
- 605 Ito, H., Nagano, M., Suzuki, H., and Murakoshi, T. (2010). Chronic stress enhances synaptic plasticity  
606 due to disinhibition in the anterior cingulate cortex and induces hyper-locomotion in mice.  
607 *Neuropharmacology* 58, 746–757. doi: 10.1016/j.neuropharm.2009.12.011
- 608 Izquierdo, I., and Medina, J. H. (1995). Correlation between the pharmacology of long-term  
609 potentiation and the pharmacology of memory. *Neurobiol. Learn. Mem.* 63, 19–32. doi:  
610 10.1006/nlme.1995.1002
- 611 Jacobi, A. A., Halawani, S., Lynch, D. R., and Lin, H. (2019). Neuronal serine racemase associates with  
612 Disrupted-In-Schizophrenia-1 and DISC1 agglomerates: Implications for schizophrenia. *Neurosci.*  
613 *Lett.* 692, 107–114. doi: 10.1016/j.neulet.2018.10.055
- 614 Jami, S. A., Cameron, S., Wong, J. M., Daly, E. R., McAllister, A. K., and Gray, J. A. (2021). Increased  
615 excitation-inhibition balance and loss of gabaergic synapses in the serine racemase knockout  
616 model of nmda receptor hypofunction. *J. Neurophysiol.* 126, 11–27. doi: 10.1152/jn.00661.2020
- 617 Jentsch, J. D., Dazzi, L., Chhatwal, J. P., Verrico, C. D., and Roth, R. H. (1998). Reduced prefrontal  
618 cortical dopamine, but not acetylcholine, release in vivo after repeated, intermittent  
619 phencyclidine administration to rats. *Neurosci. Lett.* 258, 175–178. doi: 10.1016/S0304-

- 620 3940(98)00879-9
- 621 Jhuang, H., Garrote, E., Mutch, J., Yu, X., Khilnani, V., Poggio, T., et al. (2010). Automated home-cage  
622 behavioural phenotyping of mice. *Nat. Commun.* 1, 68. doi: 10.1038/ncomms1064
- 623 Jones, C., Watson, D., and Fone, K. (2011). Animal models of schizophrenia. *Br. J. Pharmacol.* 164,  
624 1162–1194. doi: 10.1111/j.1476-5381.2011.01386.x
- 625 Kebir, O., and Tabbane, K. (2008). La mémoire de travail dans la schizophrénie : revue de la  
626 littérature. *Encephale*. 34, 289–298. doi: 10.1016/j.encep.2006.12.008
- 627 Kehrer, C. (2008). Altered excitatory-inhibitory balance in the NMDA-hypofunction model of  
628 schizophrenia. *Front. Mol. Neurosci.* 1. doi: 10.3389/neuro.02.006.2008
- 629 Kempf, L., Hussain, N., and Potash, J. B. (2005). Mood disorder with psychotic features,  
630 schizoaffective disorder, and schizophrenia with mood features: trouble at the borders. *Int. Rev.*  
631 *Psychiatry* 17, 9–19. doi: 10.1080/09540260500064959
- 632 Khan, A., and Powell, S. B. (2018). Sensorimotor gating deficits in “two-hit” models of schizophrenia  
633 risk factors. *Schizophr. Res.* 198, 68–83. doi: 10.1016/j.schres.2017.10.009
- 634 Kim, D. G., Gonzales, E. L., Kim, S., Kim, Y., Adil, K. J., Jeon, S. J., et al. (2019). Social Interaction Test in  
635 Home Cage as a Novel and Ethological Measure of Social Behavior in Mice. *Exp. Neurobiol.* 28,  
636 247–260. doi: 10.5607/en.2019.28.2.247
- 637 Kochanska, G., Murray, K., and Coy, K. C. (1997). Inhibitory control as a contributor to conscience in  
638 childhood: from toddler to early school age. *Child Dev.* 68, 263–77. Available at:  
639 <http://www.ncbi.nlm.nih.gov/pubmed/9180001>
- 640 Labrie, V., Fukumura, R., Rastogi, A., Fick, L. J., Wang, W., Boutros, P. C., et al. (2009). Serine  
641 racemase is associated with schizophrenia susceptibility in humans and in a mouse model. *Hum.*  
642 *Mol. Genet.* 18, 3227–3243. doi: 10.1093/hmg/ddp261
- 643 Larsson, S., Andreassen, O. A., Aas, M., Røssberg, J. I., Mork, E., Steen, N. E., et al. (2013). High  
644 prevalence of childhood trauma in patients with schizophrenia spectrum and affective disorder.  
645 *Compr. Psychiatry* 54, 123–7. doi: 10.1016/j.comppsy.2012.06.009
- 646 Leger, M., Quiedeville, A., Bouet, V., Haelewyn, B., Boulouard, M., Schumann-Bard, P., et al. (2013).  
647 Object recognition test in mice. *Nat. Protoc.* 8, 2531–2537. doi: 10.1038/nprot.2013.155
- 648 Lim, A. L., Taylor, D. A., and Malone, D. T. (2012). A two-hit model: behavioural investigation of the  
649 effect of combined neonatal MK-801 administration and isolation rearing in the rat. *J.*  
650 *Psychopharmacol.* 26, 1252–1264. doi: 10.1177/0269881111430751
- 651 Lipina, T. V., and Roder, J. C. (2014). Disrupted-In-Schizophrenia-1 (DISC1) interactome and mental  
652 disorders: Impact of mouse models. *Neurosci. Biobehav. Rev.* 45, 271–294. doi:  
653 10.1016/j.neubiorev.2014.07.001
- 654 Long, L. E., Chesworth, R., Huang, X.-F., McGregor, I. S., Arnold, J. C., and Karl, T. (2013).  
655 Transmembrane domain Nrg1 mutant mice show altered susceptibility to the neurobehavioural  
656 actions of repeated THC exposure in adolescence. *Int. J. Neuropsychopharmacol.* 16, 163–75.  
657 doi: 10.1017/S1461145711001854
- 658 Lukasz, B., O’Sullivan, N. C., Loscher, J. S., Pickering, M., Regan, C. M., and Murphy, K. J. (2013).  
659 Peripubertal viral-like challenge and social isolation mediate overlapping but distinct effects on  
660 behaviour and brain interferon regulatory factor 7 expression in the adult Wistar rat. *Brain.*  
661 *Behav. Immun.* 27, 71–9. doi: 10.1016/j.bbi.2012.09.011

- 662 Lussier, S. J., and Stevens, H. E. (2016). Delays in GABAergic interneuron development and behavioral  
663 inhibition after prenatal stress. *Dev. Neurobiol.* 76, 1078–1091. doi: 10.1002/dneu.22376
- 664 Ma, T. M., Abazyan, S., Abazyan, B., Nomura, J., Yang, C., Seshadri, S., et al. (2013). Pathogenic  
665 disruption of DISC1-serine racemase binding elicits schizophrenia-like behavior via D-serine  
666 depletion. *Mol. Psychiatry* 18, 557–567. doi: 10.1038/mp.2012.97
- 667 Marco, E. M., Llorente, R., López-gallardo, M., Mela, V., Llorente-berzal, Á., Prada, C., et al. (2015).  
668 The maternal deprivation animal model revisited. *Neurosci. Biobehav. Rev.* 51, 151–163. doi:  
669 10.1016/j.neubiorev.2015.01.015
- 670 Matveeva, T. M., Pisansky, M. T., Young, A., Miller, R. F., and Gewirtz, J. C. (2019). Sociality deficits in  
671 serine racemase knockout mice. *Brain Behav.* 9, 1–6. doi: 10.1002/brb3.1383
- 672 McLean, S. L., Woolley, M. L., and Neill, J. C. (2010). Effects of subchronic phencyclidine on behaviour  
673 of female rats on the elevated plus maze and open field. *J. Psychopharmacol.* 24, 787–90. doi:  
674 10.1177/0269881109103112
- 675 Millan, M. J., Andrieux, A., Bartzokis, G., Cadenhead, K., Dazzan, P., Fusar-Poli, P., et al. (2016).  
676 Altering the course of schizophrenia: Progress and perspectives. *Nat. Rev. Drug Discov.* 15, 485–  
677 515. doi: 10.1038/nrd.2016.28
- 678 Mingrone, A., Kaffman, A., and Kaffman, A. (2020). The Promise of Automated Home-Cage  
679 Monitoring in Improving Translational Utility of Psychiatric Research in Rodents. *Front.*  
680 *Neurosci.* 14, 618593. doi: 10.3389/fnins.2020.618593
- 681 Misdrahi, D. (2016). Expériences traumatiques et état de stress post traumatique dans la  
682 schizophrénie. *Encephale.* 42, S7–S12. doi: 10.1016/S0013-7006(16)30216-0
- 683 Mohn, A. R., Gainetdinov, R. R., Caron, M. G., and Koller, B. H. (1999). Mice with reduced NMDA  
684 receptor expression display behaviors related to schizophrenia. *Cell* 98, 427–436. doi:  
685 10.1016/S0092-8674(00)81972-8
- 686 Moran, P., Stokes, J., Marr, J., Bock, G., Desbonnet, L., Waddington, J., et al. (2016). Gene ×  
687 Environment Interactions in Schizophrenia: Evidence from Genetic Mouse Models. *Neural Plast.*  
688 2016, 2173748. doi: 10.1155/2016/2173748
- 689 Mori, H., and Inoue, R. (2010). Serine Racemase Knockout Mice. *Chem. Biodivers.* 7, 1573–1578. doi:  
690 10.1002/cbdv.200900293
- 691 Morita, Y., Ujike, H., Tanaka, Y., Otani, K., Kishimoto, M., Morio, A., et al. (2007). A Genetic Variant of  
692 the Serine Racemase Gene Is Associated with Schizophrenia. *Biol. Psychiatry* 61, 1200–1203.  
693 doi: 10.1016/j.biopsych.2006.07.025
- 694 Morris, R. G., Davis, S., and Butcher, S. P. (1990). Hippocampal synaptic plasticity and NMDA  
695 receptors: a role in information storage? *Philos. Trans. R. Soc. Lond. B. Biol. Sci.* 329, 187–204.  
696 doi: 10.1098/rstb.1990.0164
- 697 Murthy, S., and Gould, E. (2018). Early life stress in rodents: Animal models of illness or resilience?  
698 *Front. Behav. Neurosci.* 12, 1–5. doi: 10.3389/fnbeh.2018.00157
- 699 Nakazawa, K., and Sapkota, K. (2020). The origin of NMDA receptor hypofunction in schizophrenia.  
700 *Pharmacol. Ther.* 205, 107426. doi: 10.1016/j.pharmthera.2019.107426
- 701 Nishi, M., Horii-Hayashi, N., Sasagawa, T., and Matsunaga, W. (2013). Effects of early life stress on  
702 brain activity: Implications from maternal separation model in rodents. *Gen. Comp. Endocrinol.*  
703 181, 306–309. doi: 10.1016/j.ygcen.2012.09.024

- 704 Nucifora, F. C., Woznica, E., Lee, B. J., Cascella, N., and Sawa, A. (2019). Treatment resistant  
705 schizophrenia: Clinical, biological, and therapeutic perspectives. *Neurobiol. Dis.* 131, 104257.  
706 doi: 10.1016/j.nbd.2018.08.016
- 707 O'Leary, C., Desbonnet, L., Clarke, N., Petit, E., Tighe, O., Lai, D., et al. (2014). Phenotypic effects of  
708 maternal immune activation and early postnatal milieu in mice mutant for the schizophrenia  
709 risk gene neuregulin-1. *Neuroscience* 277, 294–305. doi: 10.1016/j.neuroscience.2014.06.028
- 710 Ogren, S. O., and Goldstein, M. (1994). Phencyclidine- and dizocilpine-induced hyperlocomotion are  
711 differentially mediated. *Neuropsychopharmacology* 11, 167–77. doi: 10.1038/sj.npp.1380103
- 712 Okkels, N., Trabjerg, B., Arendt, M., and Pedersen, C. B. (2017). Traumatic Stress Disorders and Risk  
713 of Subsequent Schizophrenia Spectrum Disorder or Bipolar Disorder: A Nationwide Cohort  
714 Study. *Schizophr. Bull.* 43, 180–186. doi: 10.1093/schbul/sbw082
- 715 Own, L. S., and Patel, P. D. (2013). Maternal behavior and offspring resiliency to maternal separation  
716 in c57bl/6 mice. *Horm. Behav.* 63, 411–417. doi: 10.1016/j.yhbeh.2012.11.010
- 717 Ploux, E., Bouet, V., Radzishevsky, I., Wolosker, H., Freret, T., and Billard, J. M. (2020). Serine  
718 racemase deletion affects the excitatory/inhibitory balance of the hippocampal CA1 network.  
719 *Int. J. Mol. Sci.* 21, 1–13. doi: 10.3390/ijms21249447
- 720 Popovic, D., Schmitt, A., Kaurani, L., Senner, F., Papiol, S., Malchow, B., et al. (2019). Childhood  
721 Trauma in Schizophrenia: Current Findings and Research Perspectives. *Front. Neurosci.* 13, 1–  
722 14. doi: 10.3389/fnins.2019.00274
- 723 Powell, S. B., and Swerdlow, N. R. (2023). The Relevance of Animal Models of Social Isolation and  
724 Social Motivation for Understanding Schizophrenia: Review and Future Directions. *Schizophr.*  
725 *Bull.* doi: 10.1093/schbul/sbad098
- 726 Prut, L., and Belzung, C. (2003). The open field as a paradigm to measure the effects of drugs on  
727 anxiety-like behaviors: A review. *Eur. J. Pharmacol.* 463, 3–33. doi: 10.1016/S0014-  
728 2999(03)01272-X
- 729 Rasmussen, B. A., O'Neil, J., Manaye, K. F., Perry, D. C., and Tizabi, Y. (2007). Long-term effects of  
730 developmental PCP administration on sensorimotor gating in male and female rats.  
731 *Psychopharmacology (Berl)*. 190, 43–9. doi: 10.1007/s00213-006-0584-z
- 732 Rees, E., and Kirov, G. (2021). Copy number variation and neuropsychiatric illness. *Curr. Opin. Genet.*  
733 *Dev.* 68, 57–63. doi: 10.1016/j.gde.2021.02.014
- 734 Ripke, S., Neale, B. M., Corvin, A., Walters, J. T. R., Farh, K. H., Holmans, P. A., et al. (2014). Biological  
735 insights from 108 schizophrenia-associated genetic loci. *Nature* 511, 421–427. doi:  
736 10.1038/nature13595
- 737 Robinson, L., and Riedel, G. (2014). Comparison of automated home-cage monitoring systems:  
738 emphasis on feeding behaviour, activity and spatial learning following pharmacological  
739 interventions. *J. Neurosci. Methods* 234, 13–25. doi: 10.1016/j.jneumeth.2014.06.013
- 740 San-Martin, R., Castro, L. A., Menezes, P. R., Fraga, F. J., Simões, P. W., and Salum, C. (2020). Meta-  
741 Analysis of Sensorimotor Gating Deficits in Patients With Schizophrenia Evaluated by Prepulse  
742 Inhibition Test. *Schizophr. Bull.* 46, 1482–1497. doi: 10.1093/schbul/sbaa059
- 743 Schroeder, A., Buret, L., Hill, R. A., and van den Buuse, M. (2015). Gene-environment interaction of  
744 reelin and stress in cognitive behaviours in mice: Implications for schizophrenia. *Behav. Brain*  
745 *Res.* 287, 304–14. doi: 10.1016/j.bbr.2015.03.063
- 746 Shin, S., and Lee, S. (2023). The impact of environmental factors during maternal separation on the



- 747 behaviors of adolescent C57BL/6 mice. *Front. Mol. Neurosci.* 16, 1147951. doi:  
748 10.3389/fnmol.2023.1147951
- 749 Sotiropoulos, M. G., Poulgiannopoulou, E., Delis, F., Dalla, C., Antoniou, K., and Kokras, N. (2021).  
750 Innovative screening models for the discovery of new schizophrenia drug therapies: an  
751 integrated approach. *Expert Opin. Drug Discov.* 16, 791–806. doi:  
752 10.1080/17460441.2021.1877657
- 753 Stevens, J., Quittner, A. L., Zuckerman, J. B., and Moore, S. (2002). Behavioral inhibition, self-  
754 regulation of motivation, and working memory in children with attention deficit hyperactivity  
755 disorder. *Dev. Neuropsychol.* 21, 117–39. doi: 10.1207/S15326942DN2102\_1
- 756 Stilo, S. A., and Murray, R. M. (2019). Non-Genetic Factors in Schizophrenia. *Curr. Psychiatry Rep.* 21,  
757 100. doi: 10.1007/s11920-019-1091-3
- 758 Sullivan, S. J., Esguerra, M., Wickham, R. J., Romero, G. E., Coyle, J. T., and Miller, R. F. (2011). Serine  
759 racemase deletion abolishes light-evoked NMDA receptor currents in retinal ganglion cells. *J.*  
760 *Physiol.* 589, 5997–6006. doi: 10.1113/jphysiol.2011.217059
- 761 Sultana, R., and Lee, C. C. (2020). Expression of Behavioral Phenotypes in Genetic and Environmental  
762 Mouse Models of Schizophrenia. *Front. Behav. Neurosci.* 14, 1–12. doi:  
763 10.3389/fnbeh.2020.00029
- 764 Swerdlow, N. R., and Light, G. A. (2018). Sensorimotor gating deficits in schizophrenia: Advancing our  
765 understanding of the phenotype, its neural circuitry and genetic substrates. *Schizophr. Res.* 198,  
766 1–5. doi: 10.1016/j.schres.2018.02.042
- 767 Tandon, R., Gaebel, W., Barch, D. M., Bustillo, J., Gur, R. E., Heckers, S., et al. (2013). Definition and  
768 description of schizophrenia in the DSM-5. *Schizophr. Res.* 150, 3–10. doi:  
769 10.1016/j.schres.2013.05.028
- 770 Timofeeva, O. A., and Levin, E. D. (2011a). Glutamate and nicotinic receptor interactions in working  
771 memory: importance for the cognitive impairment of schizophrenia. *Neuroscience* 195, 21–36.  
772 doi: 10.1016/j.neuroscience.2011.08.038
- 773 Timofeeva, O. A., and Levin, E. D. (2011b). Glutamate and nicotinic receptor interactions in working  
774 memory: importance for the cognitive impairment of schizophrenia. *Neuroscience* 195, 21–36.  
775 doi: 10.1016/j.neuroscience.2011.08.038
- 776 Torres Jimenez, N., Miller, R. F., and McLoon, L. K. (2021). Effects of D-serine treatment on outer  
777 retinal function. *Exp. Eye Res.* 211, 108732. doi: 10.1016/j.exer.2021.108732
- 778 Tractenberg, S. G., Levandowski, M. L., de Azeredo, L. A., Orso, R., Roithmann, L. G., Hoffmann, E. S.,  
779 et al. (2016). An overview of maternal separation effects on behavioural outcomes in mice:  
780 Evidence from a four-stage methodological systematic review. *Neurosci. Biobehav. Rev.* 68,  
781 489–503. doi: 10.1016/j.neubiorev.2016.06.021
- 782 Uno, Y., and Coyle, J. T. (2019). Glutamate hypothesis in schizophrenia. *Psychiatry Clin. Neurosci.* 73,  
783 204–215. doi: 10.1111/pcn.12823
- 784 Valsamis, B., and Schmid, S. (2011). Habituation and prepulse inhibition of acoustic startle in rodents.  
785 *J. Vis. Exp.*, 1–10. doi: 10.3791/3446
- 786 Van Bodegom, M., Homberg, J. R., and Henckens, M. J. A. G. (2017). Modulation of the hypothalamic-  
787 pituitary-adrenal axis by early life stress exposure. *Front. Cell. Neurosci.* 11, 1–33. doi:  
788 10.3389/fncel.2017.00087
- 789 Van Den Buuse, M. (2010). Modeling the positive symptoms of schizophrenia in genetically modified

- 790 mice: Pharmacology and methodology aspects. *Schizophr. Bull.* 36, 246–270. doi:  
791 10.1093/schbul/sbp132
- 792 Vuillermot, S., Joodmardi, E., Perlmann, T., Ögren, S. O., Feldon, J., and Meyer, U. (2012). Prenatal  
793 immune activation interacts with genetic Nurr1 deficiency in the development of attentional  
794 impairments. *J. Neurosci.* 32, 436–51. doi: 10.1523/JNEUROSCI.4831-11.2012
- 795 Wahbeh, M. H., and Avramopoulos, D. (2021). Gene-environment interactions in schizophrenia: A  
796 literature review. *Genes (Basel)*. 12. doi: 10.3390/genes12121850
- 797 Wolosker, H., Blackshaw, S., and Snyder, S. H. (1999a). Serine racemase : A glial enzyme synthesizing  
798 D -serine to regulate glutamate-N-methyl- D - aspartate neurotransmission. 96, 13409–13414.
- 799 Wolosker, H., Sheth, K. N., Takahashi, M., Mothet, J. P., Brady, R. O., Ferris, C. D., et al. (1999b).  
800 Purification of serine racemase: Biosynthesis of the neuromodulator D-serine. *Proc. Natl. Acad.*  
801 *Sci. U. S. A.* 96, 721–725. doi: 10.1073/pnas.96.2.721
- 802 Yamada, K., Ohnishi, T., Hashimoto, K., Ohba, H., Iwayama-Shigeno, Y., Toyoshima, M., et al. (2005).  
803 Identification of multiple serine racemase (SRR) mRNA isoforms and genetic analyses of SRR  
804 and DAO in schizophrenia and D-serine levels. *Biol. Psychiatry* 57, 1493–1503. doi:  
805 10.1016/j.biopsych.2005.03.018
- 806 Zamberletti, E., Prini, P., Speziali, S., Gabaglio, M., Solinas, M., Parolaro, D., et al. (2012). Gender-  
807 dependent behavioral and biochemical effects of adolescent delta-9-tetrahydrocannabinol in  
808 adult maternally deprived rats. *Neuroscience* 204, 245–57. doi:  
809 10.1016/j.neuroscience.2011.11.038
- 810

**Caroline LAHOGUE**

COMETE U1075, UFR Santé  
Campus Horowitz Bd Becquerel  
14032 Caen  
☎ : 02 31 56 68 72  
caroline.lahogue@unicaen.fr

Ref. No.: SCHRES-D-23-00662

**Title: Gene-environment interactions in a new 2-hit mouse model of schizophrenia: behavioral phenotyping**

Dear Matcheri S. Keshavan,  
Editor in Chief  
*Schizophrenia Research*

We thank you for the opportunity to revise our manuscript and the reviewers for their constructive comments. All the points raised have now been addressed, and our point-by point reply is presented below. According to the corrections, all changes in the manuscript are highlighted in blue.

**Reviewer #1:** Lahogue et al. make a convincing case for the involvement of serine racemase as a susceptibility factor for early life stress and demonstrate that the combination of these two factors results in behavioral deficits. Their data is presented clearly and transparently and I do not have concerns regarding the claims that are being made. However, I have two suggestions for improving this manuscript.

1) The writing style in the manuscript is very awkward at times. My suspicion is that the authors are not native English speakers and they directly translated from French without taking into account that sentence structure between the 2 languages are quite different. For example "Even if numerous animal models of SCZ have been developed, they are mostly based on a single risk factor (genetic, pharmacologic, environmental,...) which distanced them from the multifactorial aspect of the illness (Jones et al., 2011)." A better way to frame this is, "Although multiple animal models of SCZ have been developed, they mostly model a single risk factor and therefore, do not accurately reflect the complexities of the disease." In addition the statement in the abstract that, "Our study aimed to characterize an innovative mouse model of schizophrenia" is inaccurate. The study aims to develop a novel mouse model for schizophrenia and it should be stated as such. I also do not understand the term "The face validity." I recommend the authors get the manuscript edited/reviewed by a native English speaker.

We thank the referee for his very positive view of our study and we apologize if our writing style was sometimes awkward. Our manuscript has been proofread by a native English speaker and English professor, Sophie Pricot, who has been thanked in the Acknowledgements section. All changes are in blue in the text.

2) Not characterizing the molecular changes in the brain between the different animal paradigms (control, single hit and double hit) is a missed opportunity. Identifying the molecular changes in the brain between single and double hit animals where behavioral differences are being reported would be a fantastic addition to this paper. Although performing a genome wide characterization i.e. RNA seq would be ideal, I understand the authors need to publish their work. However, they should do immunohistochemistry (or other assays) to determine whether alterations in NMDA related activity is associated with behavioral changes as hypothesized.



**COMETE**  
UMA 1075 UNICAEN / INSERM



**Inserm**  
Institut national  
de la santé et de la recherche médicale

**Normandie Université**

**Cyceron**  
PLATEFORME D'IMAGERIE BIOMÉDICALE

**CHU**  
CAEN NORMANDIE

**FHU** Améliorer  
le pronostic des troubles  
Addictifs et  
Mentaux par une  
Médecine  
Personnalisée

**Caroline LAHOGUE**

COMETE U1075, UFR Santé  
Campus Horowitz Bd Becquerel  
14032 Caen  
☎ : 02 31 56 68 72  
caroline.lahogue@unicaen.fr

We agree that the characterization of the molecular changes would be an important step to identify the possible mechanisms underlying differences between 1-hit and 2-hit groups. In this direction, we have also performed in parallel an *ex vivo* electrophysiological study from hippocampal of the experimental groups. This was done using extracellular recordings in the CA1 area in which basal excitatory transmission and NMDA receptor-dependent synaptic plasticity were investigated. Although some changes have been recorded, they failed to reach statistical significance suggesting that behavioral alterations found in our study involve subtle changes in functionality or are generated outside the CA1 hippocampal area.

Minor comments

- Not clear why certain data are plotted as histograms and others as boxplots. It would be good to have a consistent style. This is a minor issue as the authors show individual data points.

The data are illustrated according to their distribution. Data normally distributed are expressed as mean + standard error of the mean while non-normally data distributed are expressed in median  $\pm$  interquartile. We clarified this in the Statistics section (lines 209 to 218).

- I would prefer if "Serine racemase" and "maternal separation" were included in the title which currently is vague.

We thank the referee for this remark. Accordingly, the title has been modified, and these aspects now appear in the following title:

**A new 2-hit model combining serine racemase deletion and maternal separation displays behavioral and cognitive deficits associated with schizophrenia**

- The animal model clearly has behavioral and cognitive deficits but I am not convinced that it is a model for schizophrenia. It may be wise to tone down these claims and state that this is an animal model with behavioral and cognitive deficits.

Regarding this concern, our enthusiasm is based on the construction of the model (gene x environment) which fits with the most recent view of schizophrenia etiology (see Guerrin et al., 2021 and Percelay et al, 2024) and on the behavioral and cognitive deficits we observed (hyperactivity, working and recognition memory) which mimic in animal models those found in the pathology. However, we agree that our model is incomplete. We have therefore reduced the emphasis on the aspect of schizophrenia modeling and replaced in several sentences "schizophrenia animal model" by "animal model with behavioral and cognitive deficits", as requested (lines 25 in the abstract, 294 in the text).



**Caroline LAHOGUE**

COMETE U1075, UFR Santé  
Campus Horowitz Bd Becquerel  
14032 Caen  
☎ : 02 31 56 68 72  
caroline.lahogue@unicaen.fr

**Reviewers #2**

In this manuscript, the authors advance a novel two-hit model of schizophrenia. While there are a number of publications describing a 2 hit model, this is to my knowledge the first to combine a specific genetic deletion with early maternal separation, particularly given that maternal separation is typically a model of affective disorders rather than schizophrenia. However, the data presented fail to support the hypothesis of a model of schizophrenia based on numerous inconsistencies in the results versus what would be predicted. There are a number of issues that need to be addressed:

Hyperlocomotion is not a marker of positive symptoms. Hyperlocomotion has been shown to be an exclusive domain of the ventromedial striatum, that is more involved in affect, as opposed to the associative striatum in which the hyperdopaminergic state has been repeatedly linked to psychosis. There are several review articles that highlight this discrepancy.

In his/her comment, the reviewer raises an interesting question. Indeed, it must be noted that hyperlocomotion is also considered as a nonverbal marker of positive symptoms that is supported in several articles (Daenen et al., 2003; Geyer et al., 2003; Powell & Miyakawa, 2006, Langova et al., 2020 for examples). Positive symptoms have been related to a dopaminergic increase in the mesolimbic pathway but, as mentioned by the reviewer, also to hyperdopaminergy in the associative striatum (for review: McCutcheon et al., 2019). Hyperlocomotion is relevant to assess an aspect of the positive-like symptoms in our model and suggest a possible deregulation of the mesolimbic pathway related to schizophrenia. However, we agree with the reviewer that our research should be extended to include tests also involving the associative striatum (as mentioned by Kesby et al (2018) in their recent review) which would give us further support for the presence of positive-like symptoms in the 2-hit model.

There are several models of adolescent stress leading to DA hyperactivity and hippocampal neuronal loss, but to my knowledge there are no papers showing that this occurs with trauma as early as maternal separation. This is an inaccurate citation.

We apologies for this inaccurate citation and removed it from the manuscript.

In the introduction, the pathologies associated with maternal separation are all affective disorder-related deficits, and it is not accurate to suggest that they are hallmarks of schizophrenia. Lines 49-56

We agree with the referee that maternal separation is linked to affective disorders and represents a form of early life adversity. However, schizophrenia is supposed to be due to several environmental adverse factors early in life, which could be modeled in animal model by maternal separation (Wang et al., 2020; Nishi, 2020, Guerrin et al., 2021). Thus, we, and others (Ellenbroek et al., 1998; Bouet et al., 2011; Guerrin et al., 2021) consider that maternal separation may be an interesting and useful tool, by its construct validity, to generate several disorders (affective, biological, behavioral, cognitive) associated with schizophrenia.

The use of a knockout of the serine racemase gene is not consistent with what is observed in schizophrenia, in which there is a polymorphism in the gene. The model used is an extreme and non-translatable aspect of genetic regulation.



COMETE  
UMA 1075 UNICAEN / INSERM



INSERM  
Institut national  
de la santé et de la recherche médicale

Normandie Université

Cyceron  
PLATEFORME D'IMAGERIE BIOMÉDICALE

CHU  
CAEN NORMANDIE

F.H.U. Améliorer  
le pronostic des troubles  
Addictifs et  
Mentaux par une  
Médecine  
Personnalisée

## Caroline LAHOGUE

COMETE U1075, UFR Santé  
Campus Horowitz Bd Becquerel  
14032 Caen  
☎ : 02 31 56 68 72  
caroline.lahogue@unicaen.fr

We agree with the referee that the deletion of the serine racemase gene could be seen an extreme aspect of genetic regulation, but it must be noted that most genetic procedures used so far to model schizophrenia are based, as ours, on complete single gene deletion (reelin, DISC, neuregulin, etc.) (for review: Winship et al., 2019). In our model, the serine racemase deletion is used as a way to mimic a glutamate hypofunction, described to be associated with schizophrenia (Uno and Coyle, 2019), and affecting more specifically NMDA receptor activation (Basu et al, 2009) The mutation of the SR-KO mice model used in our study is located on the exon 1 of the gene and induces a dysfunction in *serine racemase* promoter function. Interestingly, several gene polymorphisms found in schizophrenic patients are localized close to the 5'-promoter region and the exon 1 (1b notably) of the *serine racemase* gene, which induces a reduction in promoter function of at least 60 % (Yamada et al., 2005; Goltsov et al., 2006; Morita et al., 2006).

The authors need to justify the use of male mice exclusively.

This study was carried out only in male mice but, we are currently working on the behavioral assessment in female mice given the possible differences existing between the two genders in clinics (concerning in particular, the course of the pathology, the intensity of the symptoms, the sensitivity to antipsychotics and their adverse effects). Both genders have to be investigated, we started the study only in males on the basis of epidemiological data that show a sex ratio male/female (1.4), and because symptoms are described as more severe in men than women (Aleman et al., 2003; Lee et al., 2018).

Time spent in the center of the open field is a metric of low anxiety, not “disorganization.” The fact that the 2 hit models spend more time in the center area fails to support the hypothesis. This is also true of the elevated plus maze, which is a valid model of anxiety. In this model, the 2 hit also failed to show differences, and indeed had less “anxiety” than the maternal separation alone.

We agree with the referee regarding the “*less anxiety*” and complete our sentence line 366 for more precision. We also replace the “disorganization” term by “behavioral disinhibition” which seems to be more appropriate since it takes into account several locomotor abnormalities (as a lack of control of motor skills hyperactivity etc.) as we can find in our model.

In figure 4B, the authors argue that there is no difference in the 2 hit model in alternation performance above chance. However, saying there is no difference is NOT the same as saying they are the same; to argue they are the same one must show that they are within a 5% confidence interval of the 50% point; saying they are not significantly different in contrast has a 95% probability of being due to chance.

We thank the reviewer for this accurate comment. We changed the paragraph 3.2.1 (lines 252 to 259) and the discussion section (lines 300) regarding the spontaneous alternation test. Indeed, even if the spontaneous alternation percentage was not different between control, the fact that it did not differ from the chance value of 50% in the 2-hit group suggest a hazardous behavior in the Y-maze probably induced by working memory deficits in those mice.

The NOR test is a good cognitive performance metric. However, the authors failed to show that they 2 hit model had impairment in this domain. The failure to show deficits in social interaction is also not consistent with animal models of either affective or psychotic disorders. PPI is a deficit found



**COMETE**  
UMA 1075 UNICAEN / INSERM




**Inserm**  
Institut national  
de la santé et de la recherche médicale

  
Normandie Université

  
Cyceron  
PLATEFORME D'IMAGERIE BIOMÉDICALE

**CHU**  
CAEN NORMANDIE

 **FHU** - Améliorer  
le pronostic des troubles  
Addictifs et  
Mentaux par une  
Médecine  
Personnalisée

**Caroline LAHOGUE**

COMETE U1075, UFR Santé  
Campus Horowitz Bd Becquerel  
14032 Caen  
☎ : 02 31 56 68 72  
caroline.lahogue@unicaen.fr

across a number of disorders, not exclusively to schizophrenia. However, a failure to find any deficit across groups is a major concern, and is further evidence that this is not an effective model.

We agree with the referee deficits in NOR, PPI and social interaction would bring a more severe phenotype to our model. However, we believe that each animal model provides interesting and different characteristics, which are most of the times impossible to observe in each single model. Very few, if some exists, display all schizophrenia mimicking symptoms. The fact that we did not evidence deficits with all the tests used herein doesn't mean that the model is not effective. Instead, this model displays not only hyperactivity, but also lack of place recognition, and another aspect of cognitive deficit, such as working memory deficit, which is not common in multifactorial models and not often investigated. These aspects belong to the symptoms that are not yet reached by treatments, but are disabling for patients and for their daily living condition.



**COMETE**  
UMR 1075 UNICAEN / INSERM



 **Inserm**  
Institut national  
de la santé et de la recherche médicale

  
Normandie Université

 **Cyceron**  
PLATEFORME D'IMAGERIE BIOMÉDICALE

**CHU**  
CAEN NORMANDIE

## Caroline LAHOGUE

COMETE U1075, UFR Santé  
Campus Horowitz Bd Becquerel  
14032 Caen

☎ : 02 31 56 68 72  
caroline.lahogue@unicaen.fr

### Acknowledgements:

We are grateful to Sophie Pricot, as native English-speakers, who accepted to proofread the present manuscript.

This work was supported by the University of Caen Normandy, Normandy Region, INSERM, and FHU A<sup>2</sup>M<sup>2</sup>P. The authors declare no conflict of interest.

Caroline LAHOGUE and Valentine BOUET