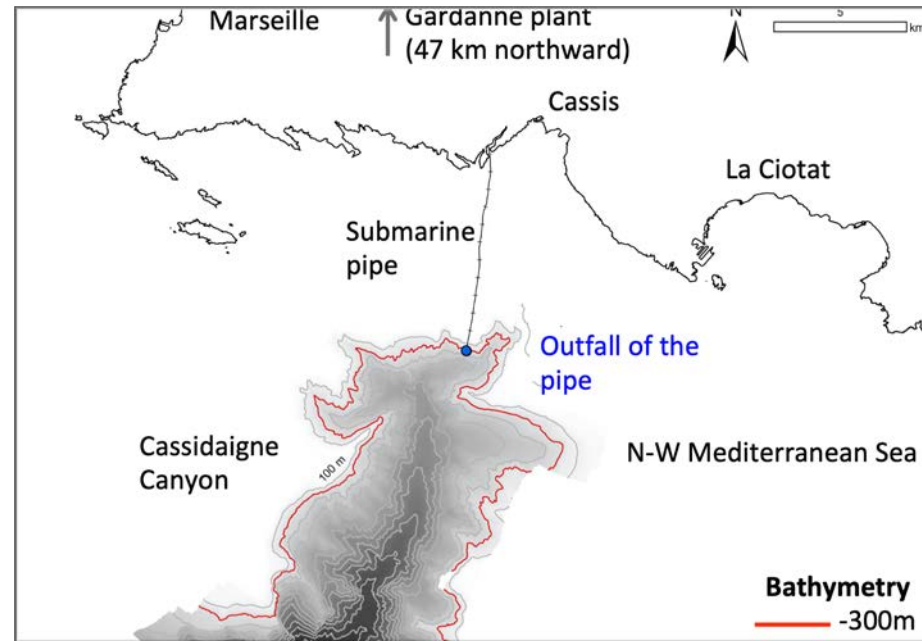
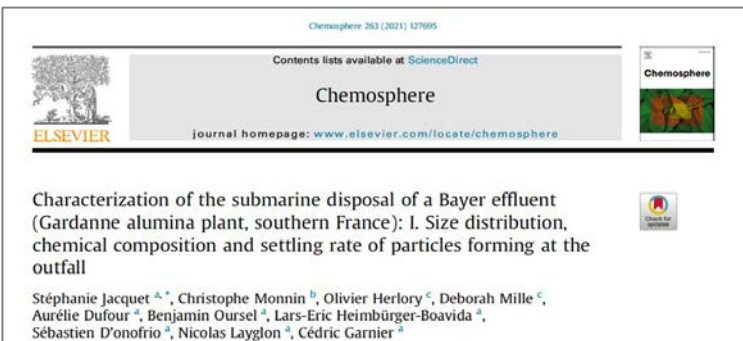


Metal contaminants in the Cassidaigne Canyon: impact of the Bayer effluent of the Gardanne alumina plant

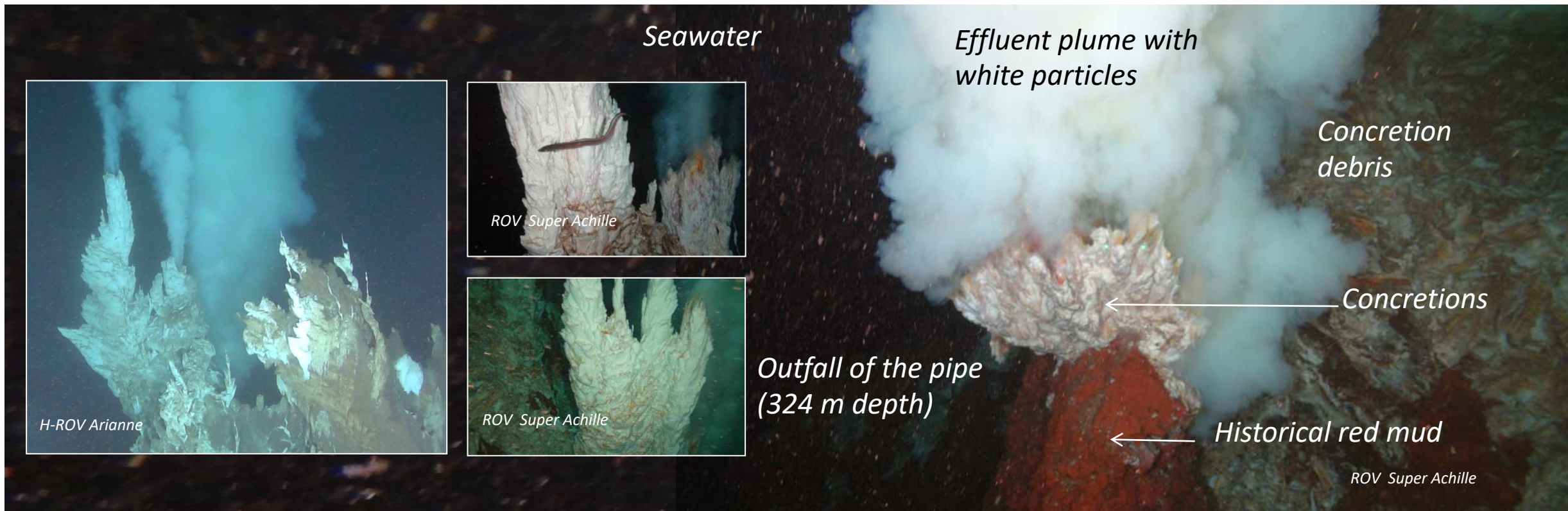
S. Jacquet (MIO), C. Monnin (GET)

- ❑ Gardanne alumina plant (1893)
- ❑ Bauxite extraction (Bayer process)
- ❑ Residu/ slurry « red mud »
 - 1893-1966: tailing ponds (red mud)
 - 1967-2015: Canyon (red mud)
 - 2016: Bayer effluent (at sea) + solid part (tailing pond)
High pH (12.5) - High metals content liquid effluent
 - 2018: effluent treatment in the plant
pH and metals concentration decreases



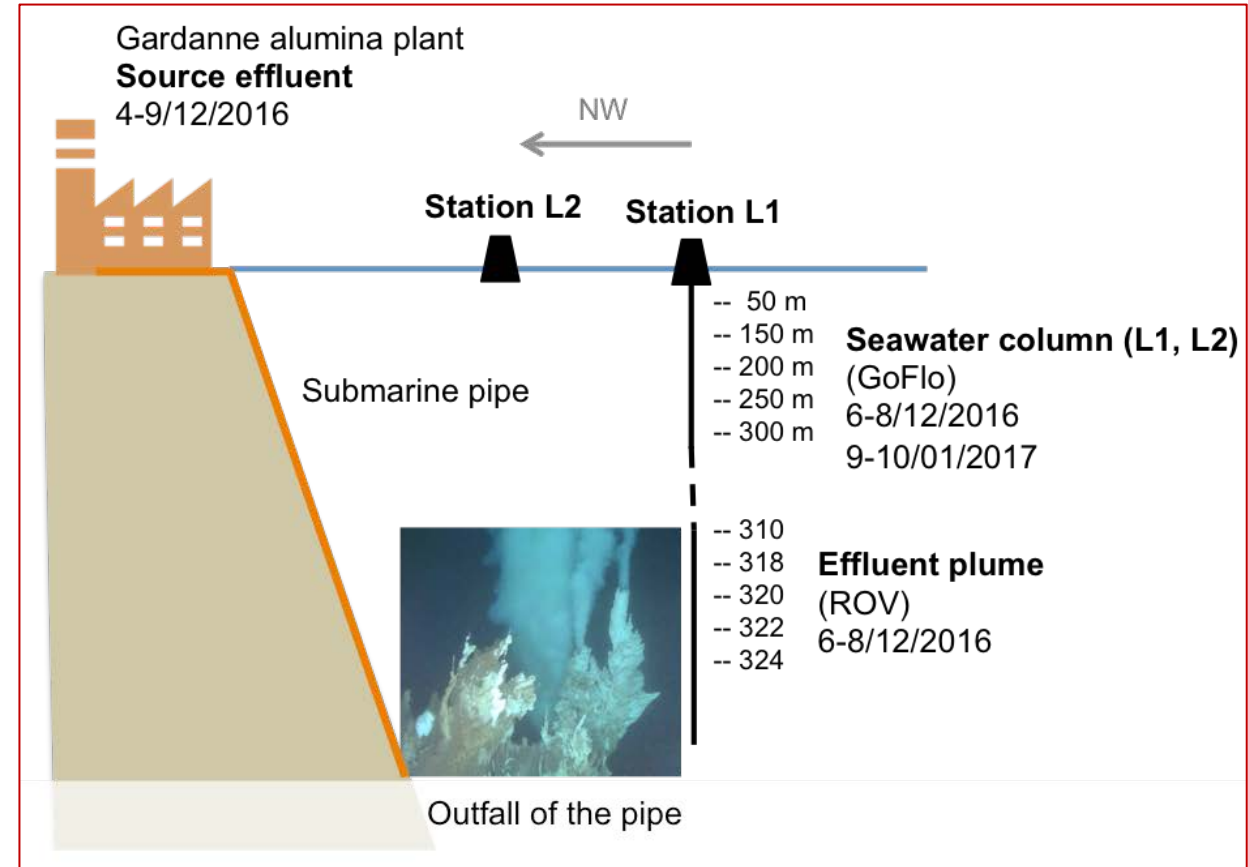
2016

"Hydrothermalisme industriel"



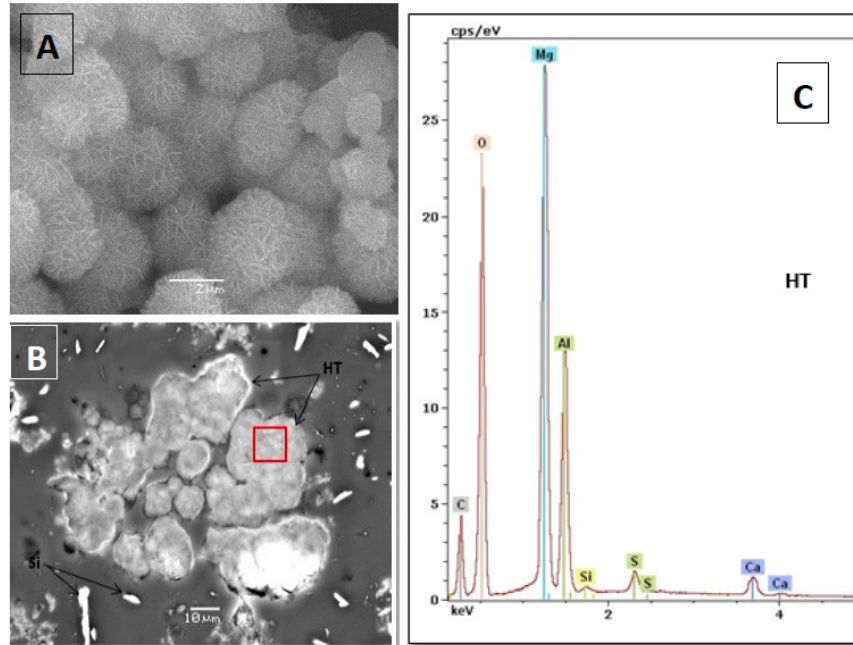
Sampling

- ❑ Source effluent (Gardanne plant)
- ❑ Effluent plume (outfall - ROV)
- ❑ Seawater column (L1 outfall, L2 non-impacted– GoFlo)
- ❑ Concretions & particles
- ❑ Sediments



Mineralogical & Chemical composition

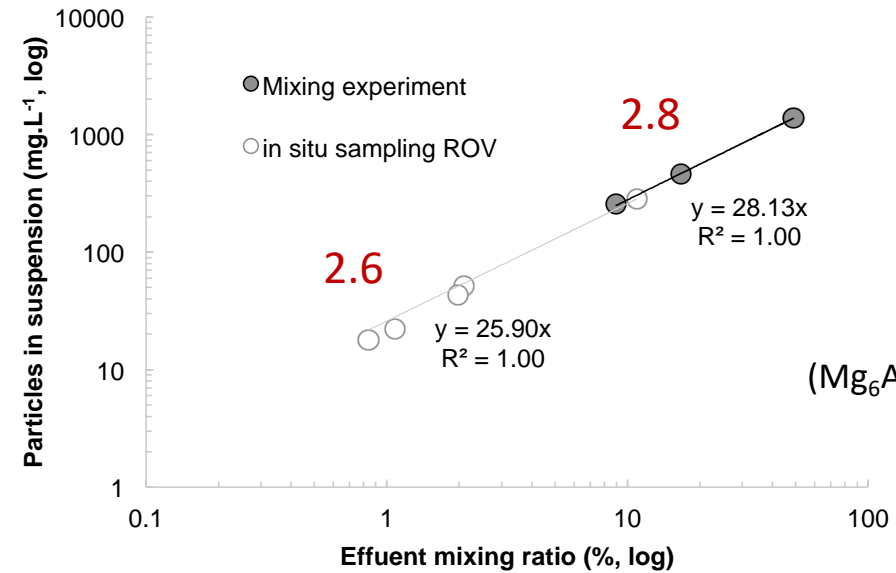
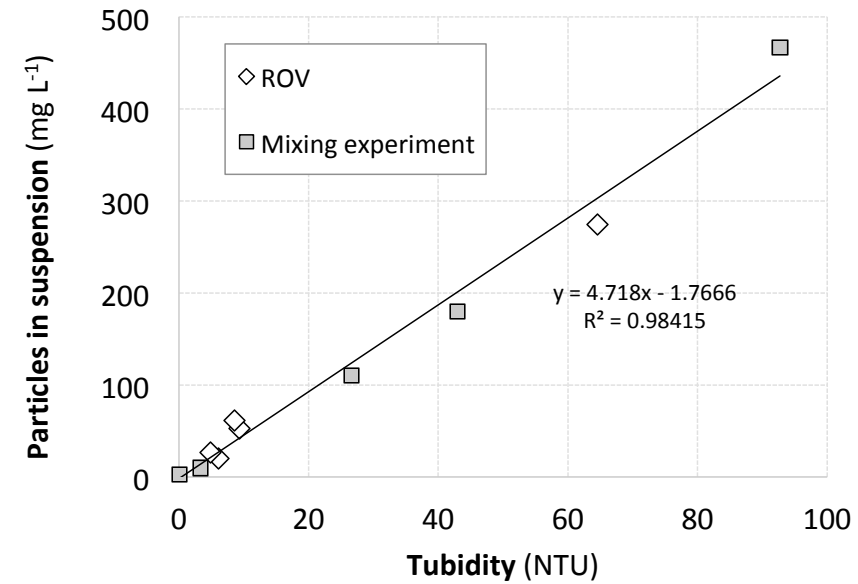
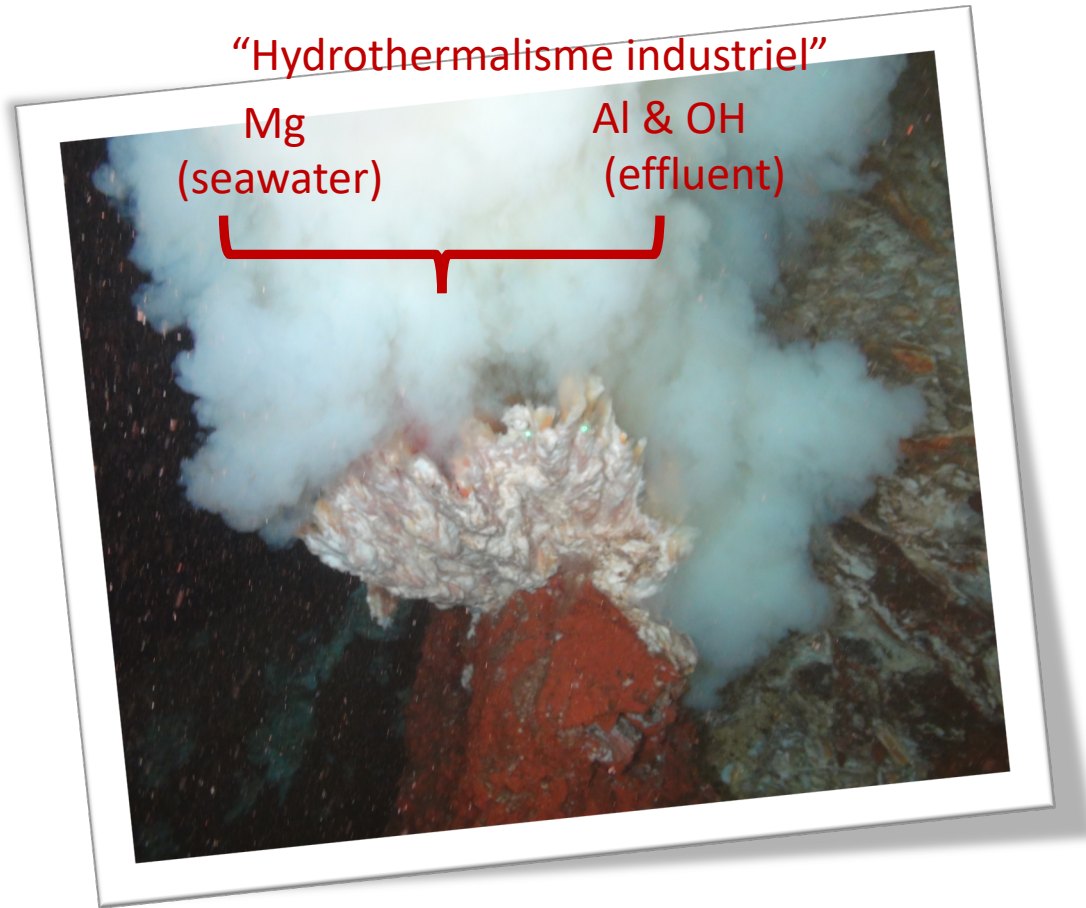
- Mineralogical composition: hydrotalcite (HTC), Mg-Al Double Layered Hydroxide
- Group 1: HTC (core of concretions), Groups 2-3: HTC + brucite + calcium carbonate (layer)
- Chemical composition (SF-ICP-MS): Mg, Al, Ca, S.
- Main metals of interest: As & V



Unit	Element	Group 1
		mean
mg g ⁻¹	Mg	443
	Al	285
	Ca	10
	S	7
μg g ⁻¹	Si	1681
	V	1178
	K	277
	Sr	234
	P	76
	As	73
	B	47
	Mo	13
	Fe	11
	Ti	3
	Cu	1.81
	Zn	1.71
	Sn	1.04
ng g ⁻¹	Rb	791
	U	688
	Ba	558
	Cr	287
	Ni	263
	Co	151
	Sb	116
	Mn	96
	Ag	51
	Cd	50
	Pb	19
	Hg	12
	Th	10

Formation yield

- 1 NTU - 4.7 mg L⁻¹ of suspended particles
- 1L of effluent – 2.5 g of (dry) particles (25 g wet)

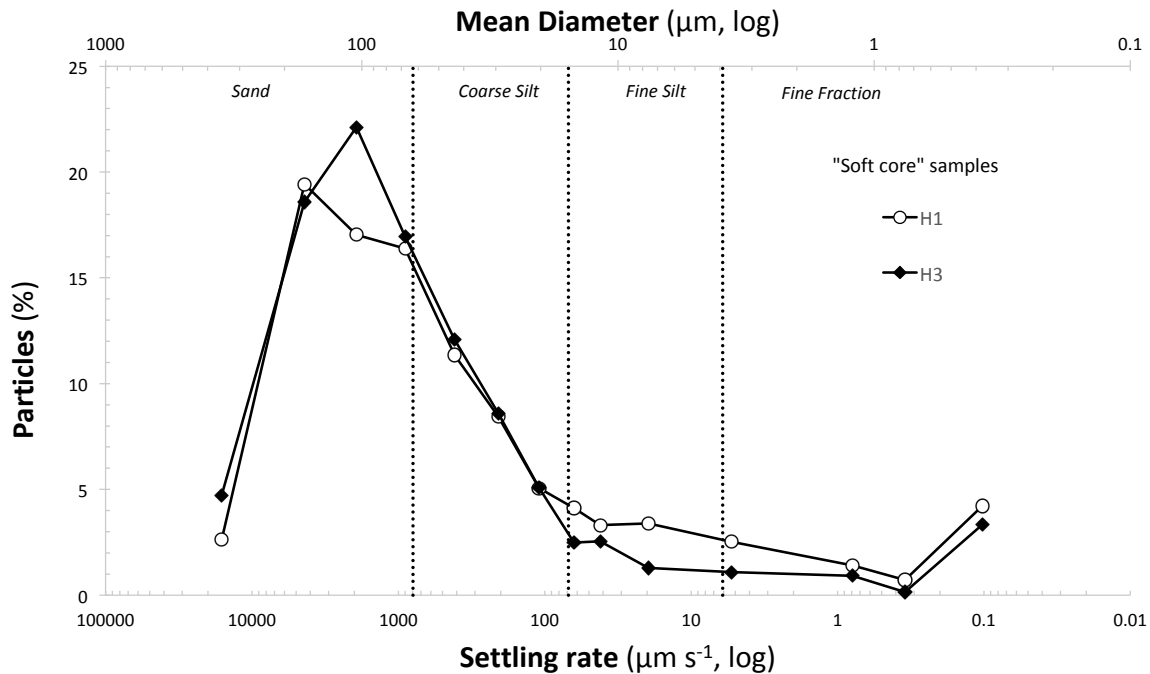


2.8
2.6

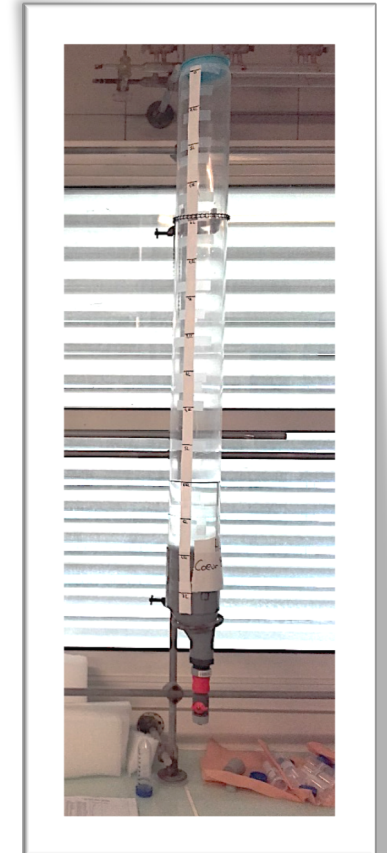
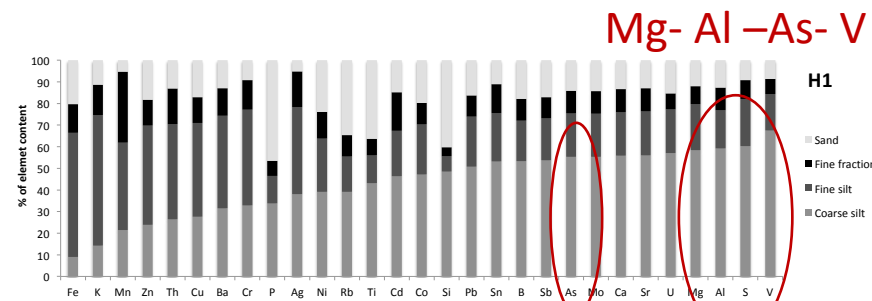
HTC
mineral formula
 $(Mg_6Al_2(OH)_{16}[CO_3] \cdot 4H_2O)$
molecular weight

Size distribution- Settling rate

- ❑ Particles: mean diameter between 15.6 and 63 μm and settling rate around **96 m d^{-1}** (53-60 % of the total concretion mass).
- ❑ Main elements (Mg, Al, Ca, S) and metals (As & V)

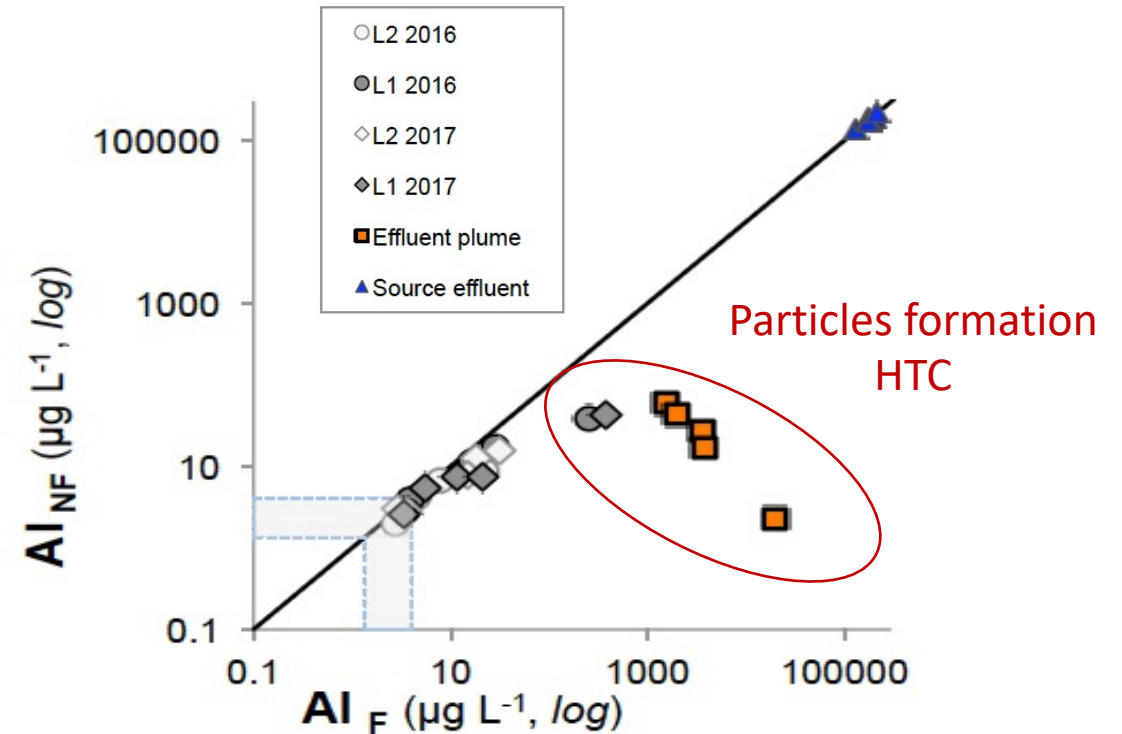
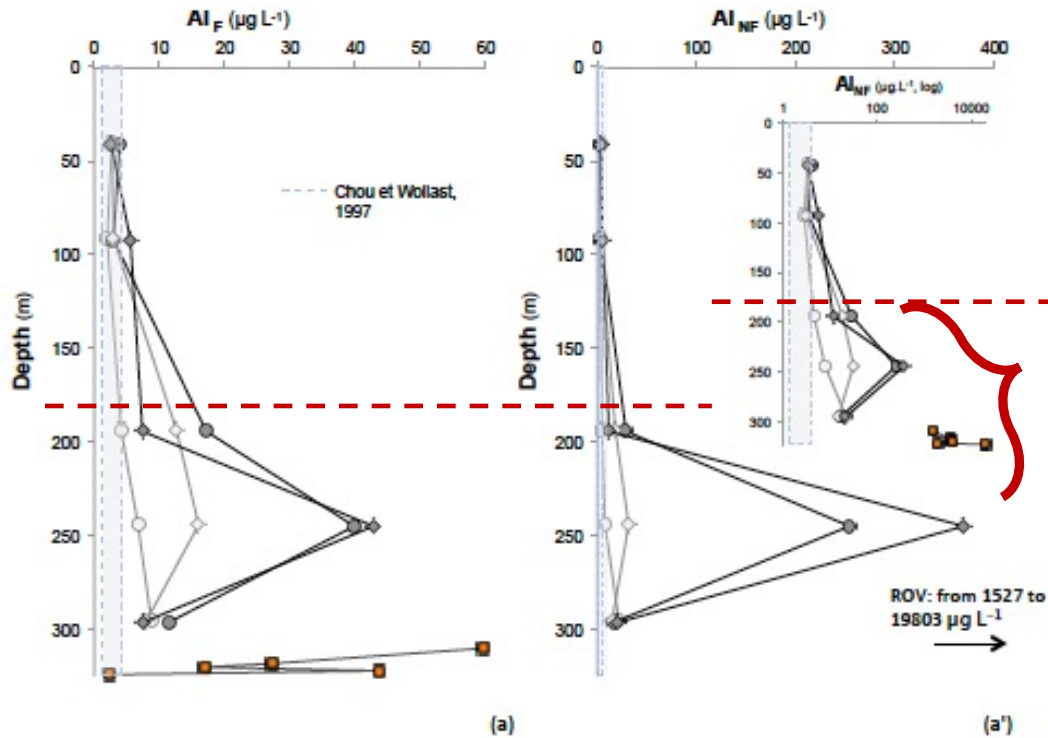


Sample	Fraction	Settling rate $\mu\text{m s}^{-1}$	% SPM
H1 soft core	Sand (>63 μm)	5779	22%
	Coarse silt (15.6-63 μm)	1018	53%
	Fine silt (3.9-15.6 μm)	64.1	16%
	Fine fraction (<3.9 μm)	1.72	9%



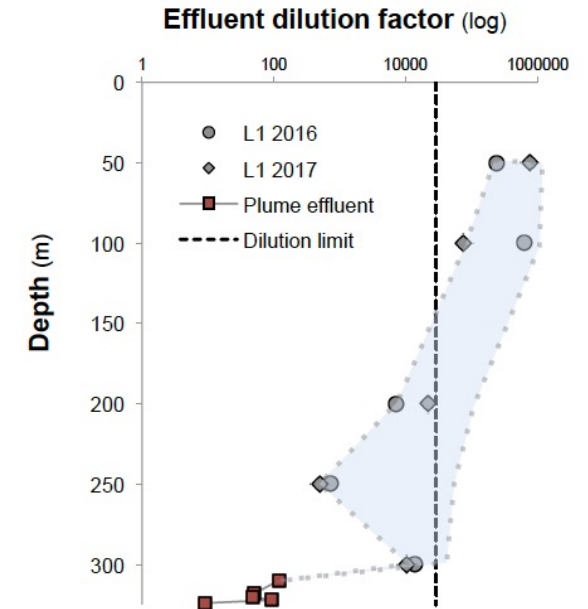
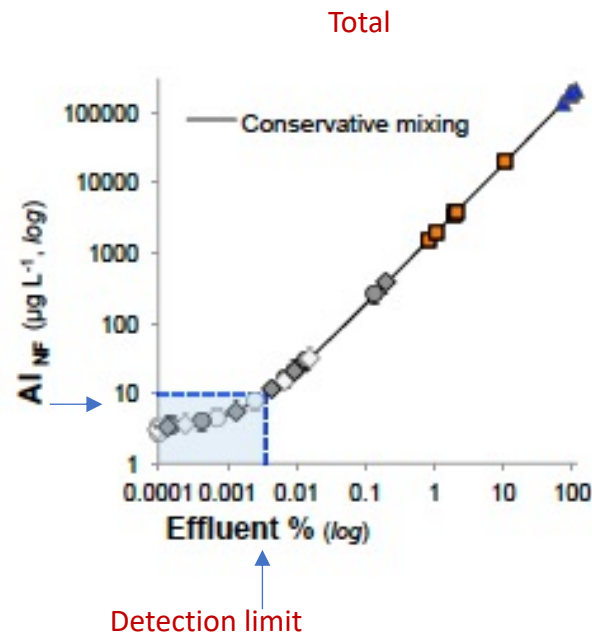
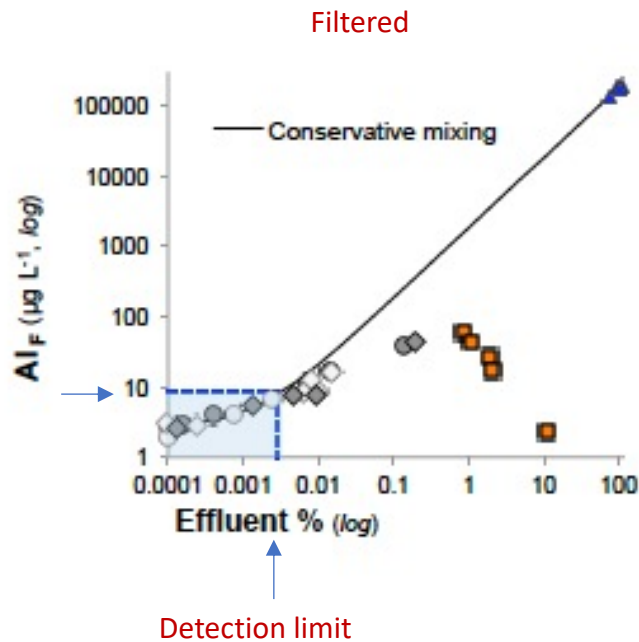
Metals in the Effluent plume & Water Column

- ❑ The effluent contribution is mainly notable in the upper 10 meters above the outfall but it can be reported starting 200 m depth
- ❑ There is a depletion in dissolved Al (and in a lesser extent As) when the effluent mixes with seawater, reflecting the in situ formation of particles and concretions.



Metals in the Effluent plume & Water Column

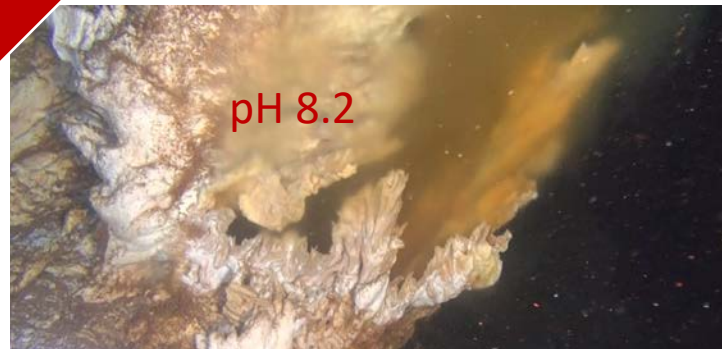
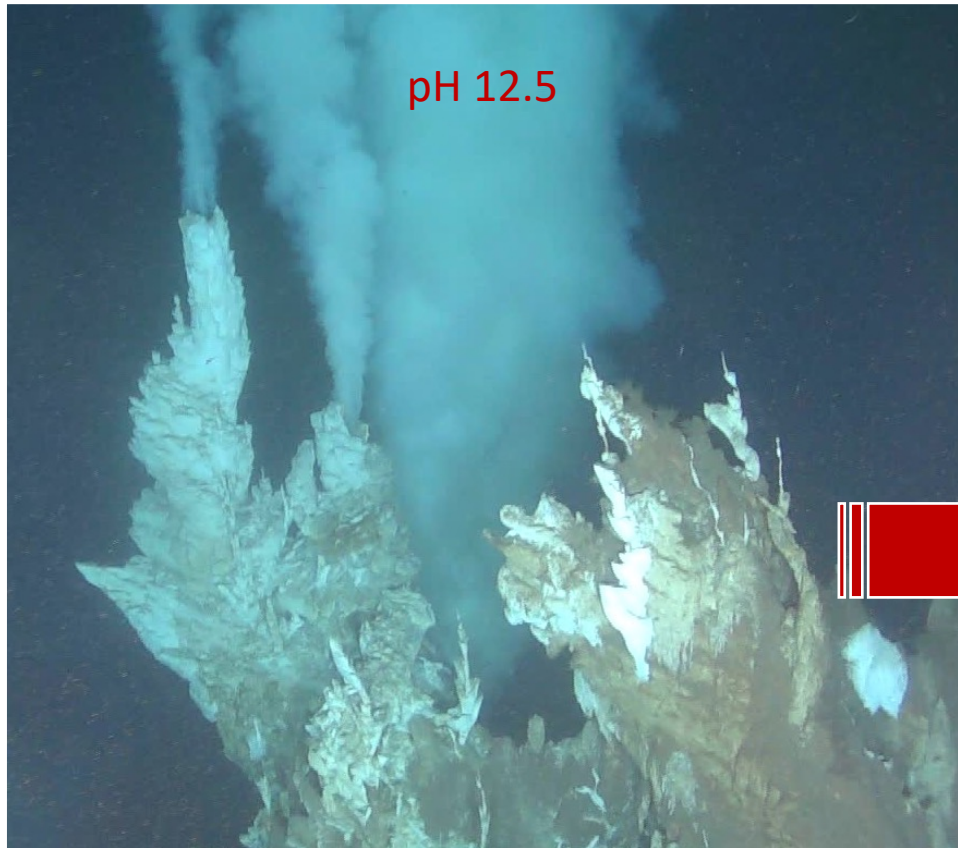
- ☐ Calculations show that the effluent contribution can be detected up to 0.003 % for Al (2.4 % for V and 10 % for As)
- ☐ Under a dilution factor of the effluent of around 10^4 , Al (NF concentrations) can be used to detect the effluent presence.



2016

2019

- ❑ Changes of the source effluent -starting 2018 : pH and metals concentration decrease – **No HTC formation**
- ❑ Would destabilisation of the concretions affect metals dispersion in the surrounding seawater ?



Concentrations evolution (2016 - 2019 - 2020 cruises)

- Source effluent variability (+ particles presence)
- No HTC formation
- Metals concentration increase in the water column (origin?)

