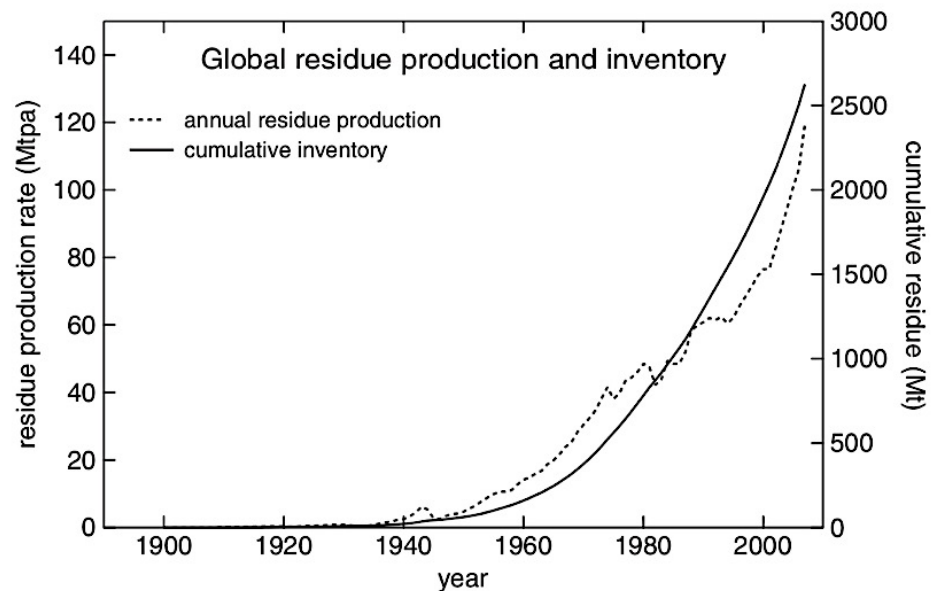


# Potential of Aleppo pines as a vegetative barrier to reduce transfer of particles in and around storage sites of bauxite and its residues, in the Bouches-du-Rhône (France)

I. Laffont-Schwob, J. Rabier, V. Masotti, H. Folzer, M.-D. Salducci, M. Maignan,  
Y. Noack, J.C. Raynal, L. Vassalo, C. Demelas, P. Prudent



# Storage of bauxite residues: an increasing issue

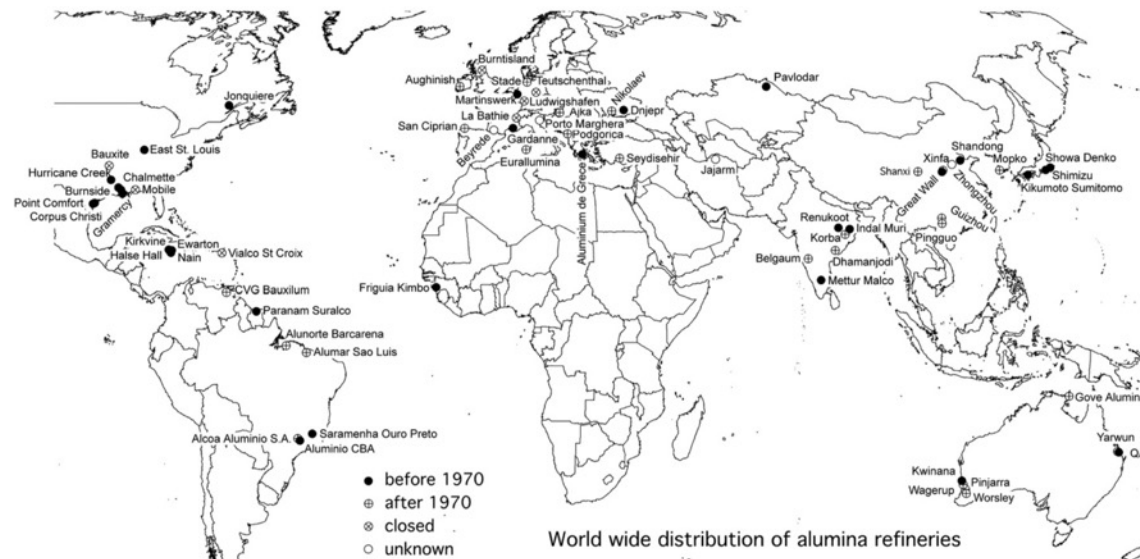


Global production rate and cumulative inventory of bauxite residue (Power et al., 2011)

## Bauxite residue issues: I. Current management, disposal and storage practices

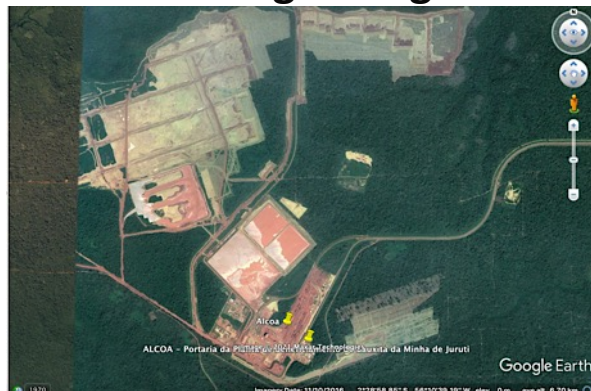
G. Power, M. Gräfe, C. Klauber\*

CSIRO Process Science and Engineering / Parker CRC, Lake Meath National Research Facility, PO Box 7229, Karawara WA 6152, Australia



World map showing the distribution of alumina refineries based on establishment date (before or after 1970), closed or unknown (Power et al., 2011)

## From lagooning and sea disposal to dry stacking

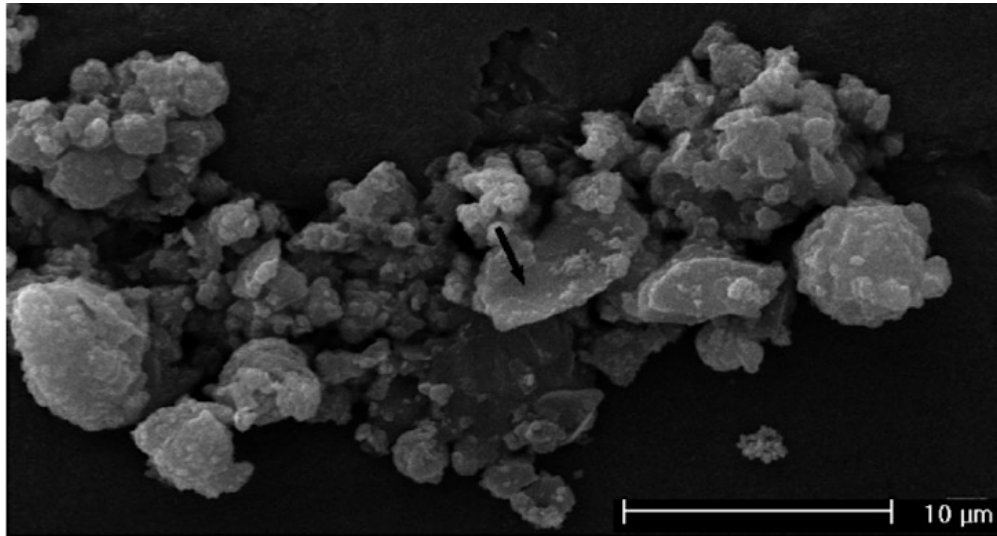


## Dry stacking impacts

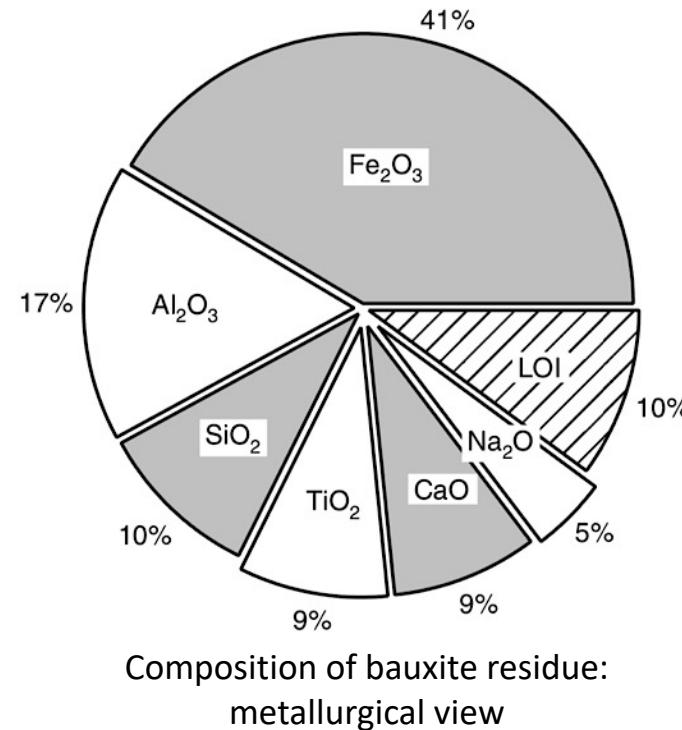
Bauxite residue: fine fraction waste remaining after Al extraction from bauxite using the Bayer Process

Dust: the majority (~80%) of particles in red mud may be less than 100  $\mu\text{m}$

pH 9–13



Grain size distribution : SEM image of the PM(10-1) fraction of resuspended red mud dust. Most particles are fluffy aggregates with diameters smaller than  $\sim 5 \mu\text{m}$  (Gelencsér et al., 2011)



determinand	red mud leachate
pH	12.6
selected elements ( $\mu\text{g L}^{-1}$ )	
Al	833500
As	6325
B	1693
Cr	65
Cu	429
Fe	288
Ga	3820
Mo	7883
Ni	35
Pb	405
Si	9133
V	8977

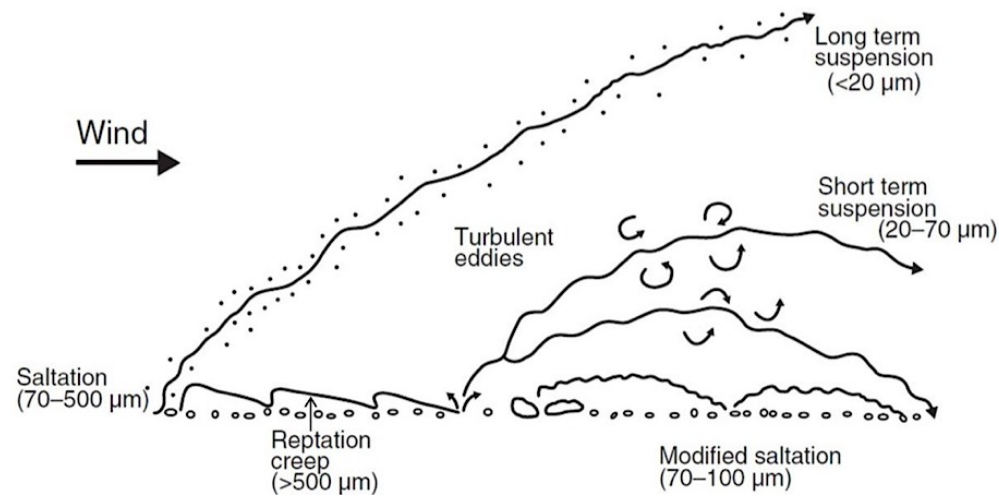
## Dry stacking impacts

Red muds : fine fraction waste remaining after Al extraction from bauxite using the Bayer Process

Emission of fine and extra-fine particles (PM10 and PM2.5), which sometimes include inhalable hazardous compounds

+ sedimentable particles

Unfavorable meteorological conditions (high temperature, low humidity, intense solar radiation, and wind speed)



Schematic of the different modes of aeolian transport.

(Kok et al 2012)

The physics of wind-blown sand and dust

Jasper F. Kok<sup>1</sup>, Eric J. R. Parteli<sup>2,3</sup>, Timothy I. Michaels<sup>4</sup>, and Diana Bou Karam<sup>5</sup>

<sup>1</sup>Department of Earth and Atmospheric Sciences, Cornell University, Ithaca, NY, USA

<sup>2</sup>Departamento de Física, Universidade Federal do Ceará, Fortaleza, Ceará, Brazil

<sup>3</sup>Institute for Multiscale Simulation, Universität Erlangen-Nürnberg, Erlangen, Germany

<sup>4</sup>Southwest Research Institute, Boulder, CO USA

<sup>5</sup>L'ATMOS, IPSL, Université Pierre et Marie Curie, CNRS, Paris, France



Stadium (Vitrolles, October 2015)



Article  
Experimental Evaluation of PM Emission from Red Mud Basins Exposed to Wind Erosion

Valentina Dentoni , Battista Grosso  and Francesco Pinna 

Department of Civil and Environmental Engineering and Architecture (DICAAR), Cagliari University,  
Via Marengo, 2, 09123 Cagliari, Italy; grosso@unica.it (B.G.); francesco.pinna@unica.it (F.P.)

\* Correspondence: vdentoni@unica.it

Science of the Total Environment 426 (2012) 359–365

Contents lists available at SciVerse ScienceDirect

Science of the Total Environment

journal homepage: [www.elsevier.com/locate/scitotenv](http://www.elsevier.com/locate/scitotenv)



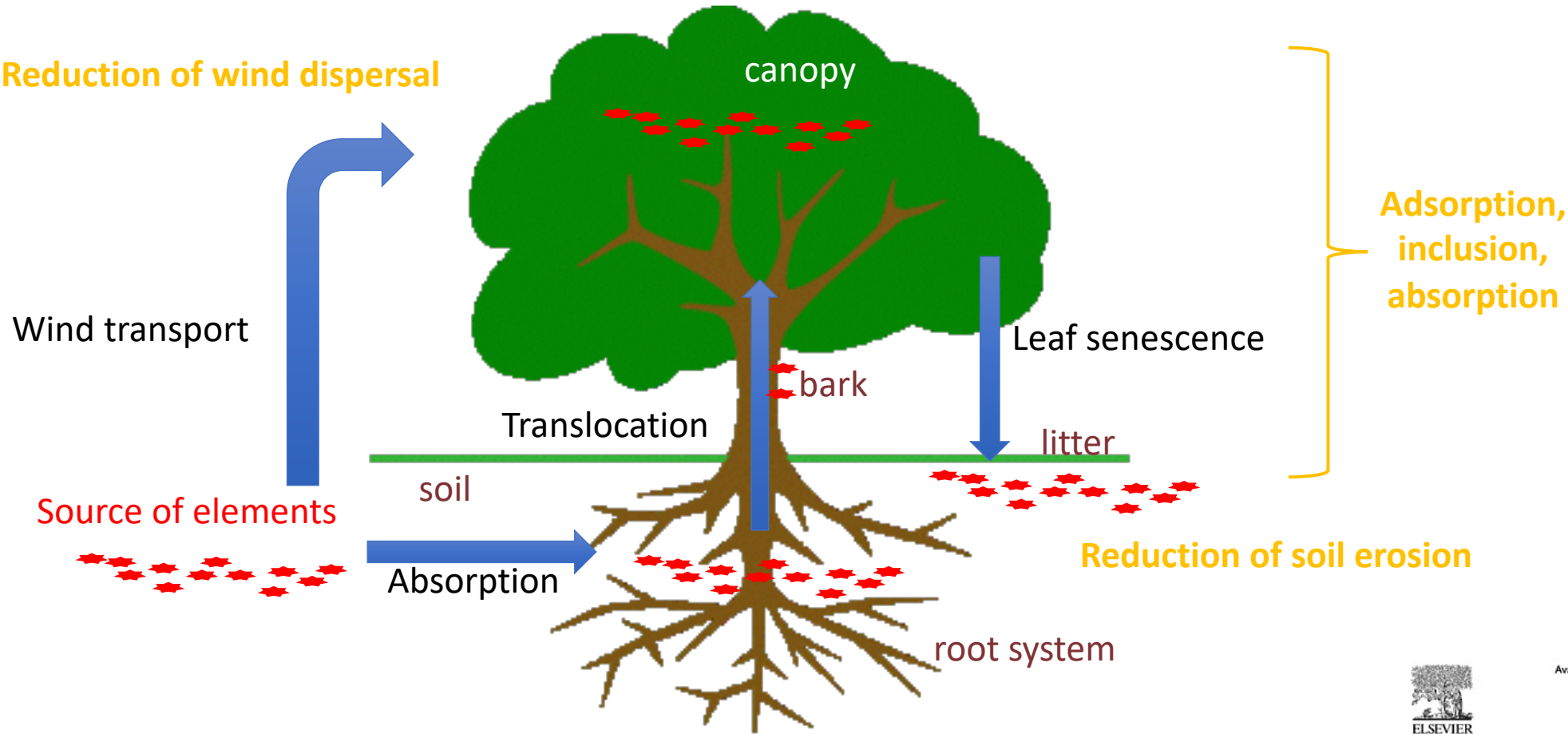
Environmental impact of toxic elements in red mud studied by fractionation and speciation procedures

Radmila Milačić , Tea Zuliani, Janez Ščančar

Department of Environmental Sciences, Jozef Stefan Institute, Jamova 39, 1000 Ljubljana, Slovenia

# Vegetative barriers: a nature-based solution to lower particle transfer

Reduction of wind dispersal



Ecotechnologies with proven results in urban environments



Available online at [www.sciencedirect.com](http://www.sciencedirect.com)



Aerosol Science 39 (2008) 40–47

Journal of  
*Aerosol Science*

[www.elsevier.com/locate/jaerosci](http://www.elsevier.com/locate/jaerosci)

Collection of ambient particulate matter by porous vegetation barriers: Sampling and characterization methods

Abhishek Tiwary<sup>a</sup>, Adam Reff<sup>b,\*</sup>, Jeremy J. Colls<sup>c</sup>

<sup>a</sup>School of Chemical Engineering and Analytical Sciences, Environment and Sustainable Technology Division, The University of Manchester, P.O. Box 88, Sackville St., Manchester M60 1QD, UK

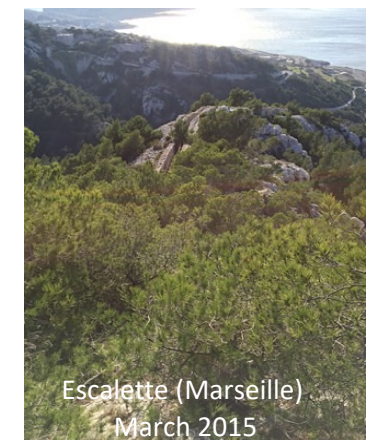
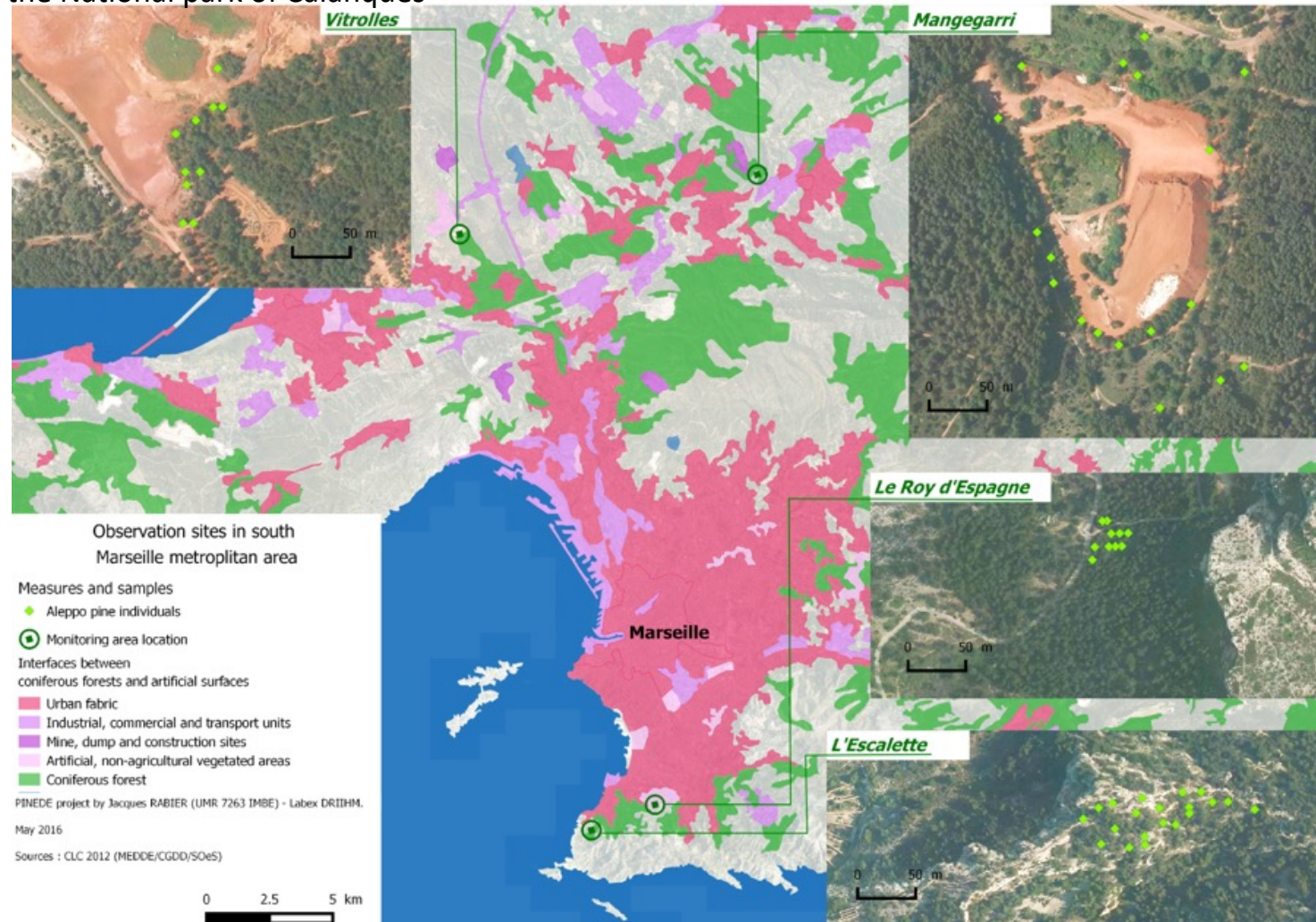
<sup>b</sup>Atmospheric Modeling Division, US Environmental Protection Agency, E243-03, Research Triangle Park, NC 27711, USA

<sup>c</sup>School of Biosciences, Agricultural and Environmental Sciences Division, The University of Nottingham, University Park, Nottingham NG7 2RD, UK

**Our hypothesis:** Aleppo pine trees occurring nearby bauxite residue deposit may play a role to reduce wind and soil erosion and prevent particles dispersion in the surrounding

Four sites chosen:

- 2 bauxite and their residues deposits (Mangegarri and Stadium)
- 1 reference site (Roy d'Espagne) in the National park of Calanques
- 1 brownfield site (Escalette) in the National park of Calanques



10 pine trees on each site with 10 m of distance between each one



**ForceA**  
VOUS POUR AGIR

**MULTIPLEX® 3**

- Chlorophyll
- Flavonols
- Anthocyanins



Patented technology

- Portable and remote
- Multi-wavelengths and real-time
- Non-destructive, quick and simple
- No sample preparation
- Any ambient light conditions

Blue Green Fluorescence (BGF) excited by UV



Non-destructive measurements of plant compounds with a portative fluorimeter

All samples dried and grinded, and soils sieved at 2mm beforehand

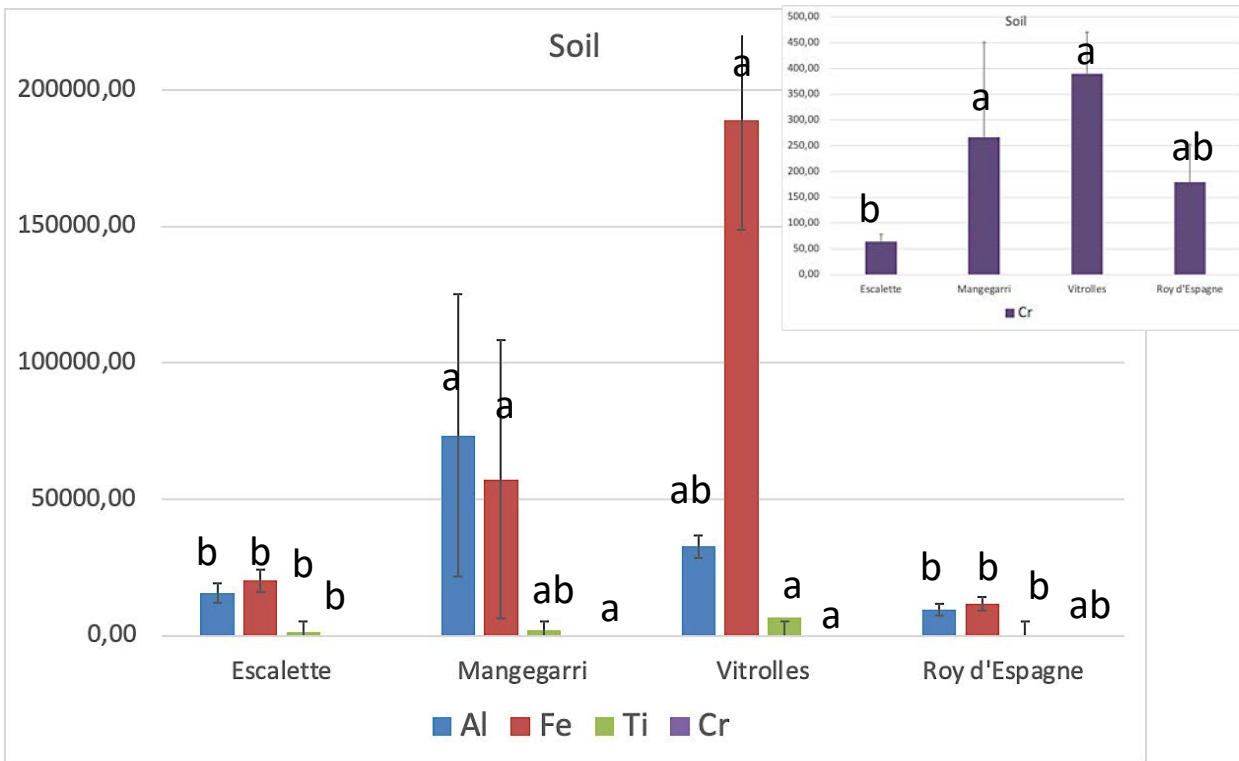


X-ray fluorescence & Coupled Plasma - Atomic Emission Spectrometry analyses

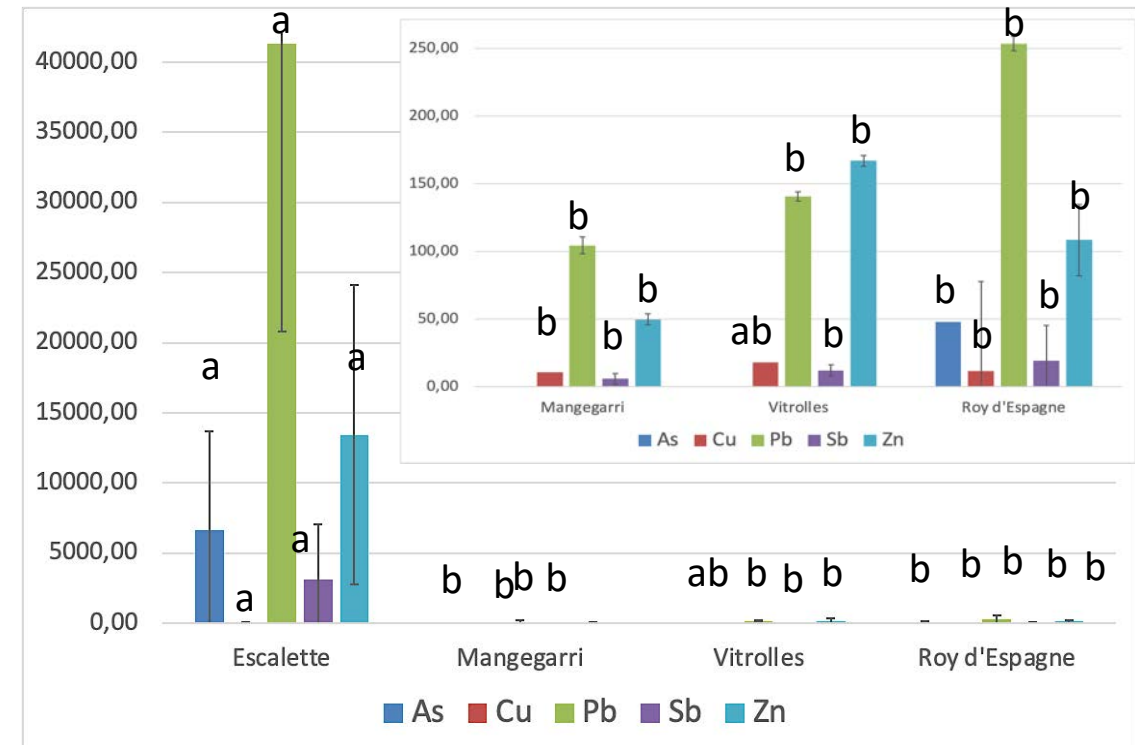


## Soil

## Element mg/kg



(Mean  $\pm$  SD, n=10, Dunn test,  $p \leq 0.01$ )



(Mean  $\pm$  SD, n=10, Dunn test,  $p \leq 0.01$ )

Soils in Mangegarri with higher **Al** content (bauxite storage)

**Fe** significantly higher in Mangegarri and Vitrolles soils than Escalette and Roy d'Espagne (bauxite and its residues)

**Ti** significantly higher in Vitrolles than Escalette and Roy d'Espagne

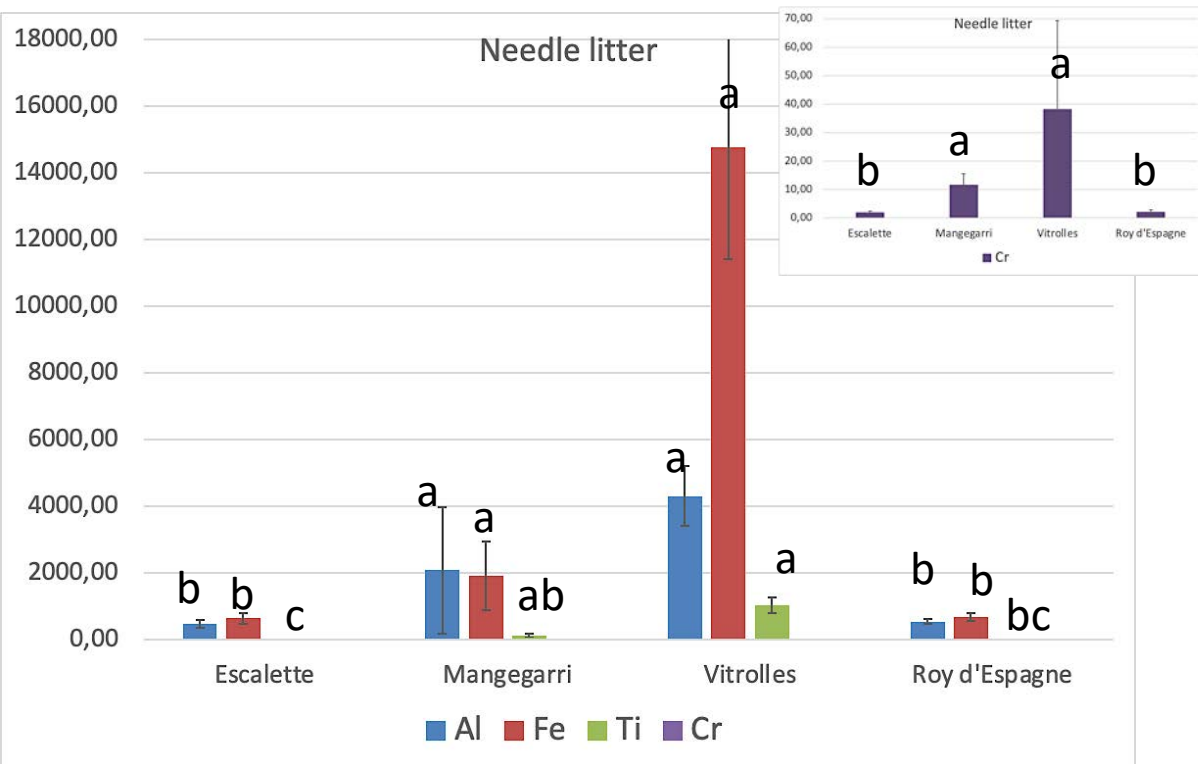
**Cr** significantly higher in Mangegarri and Vitrolles soils than Escalette

**As** only detected in Escalette and Roy d'Espagne (< LD for other soils)

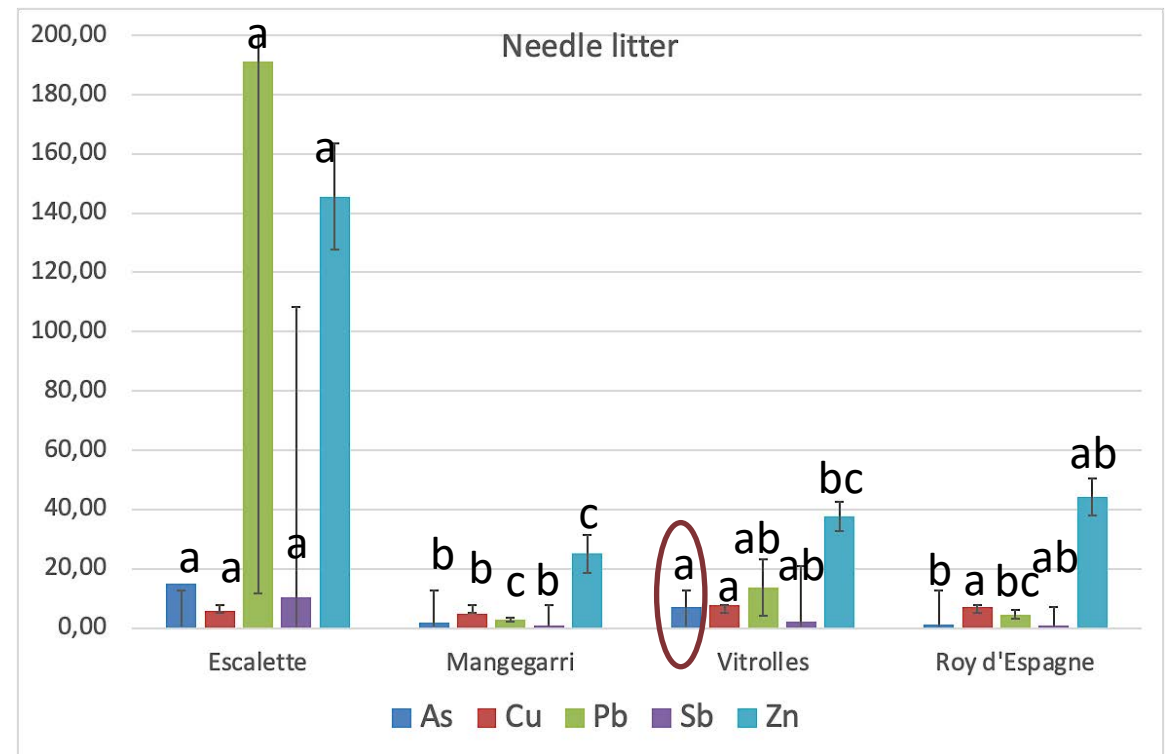
**Pb**, **Sb** and **Zn** significantly higher in Escalette than other soils



## Needle litter



## Element mg/kg



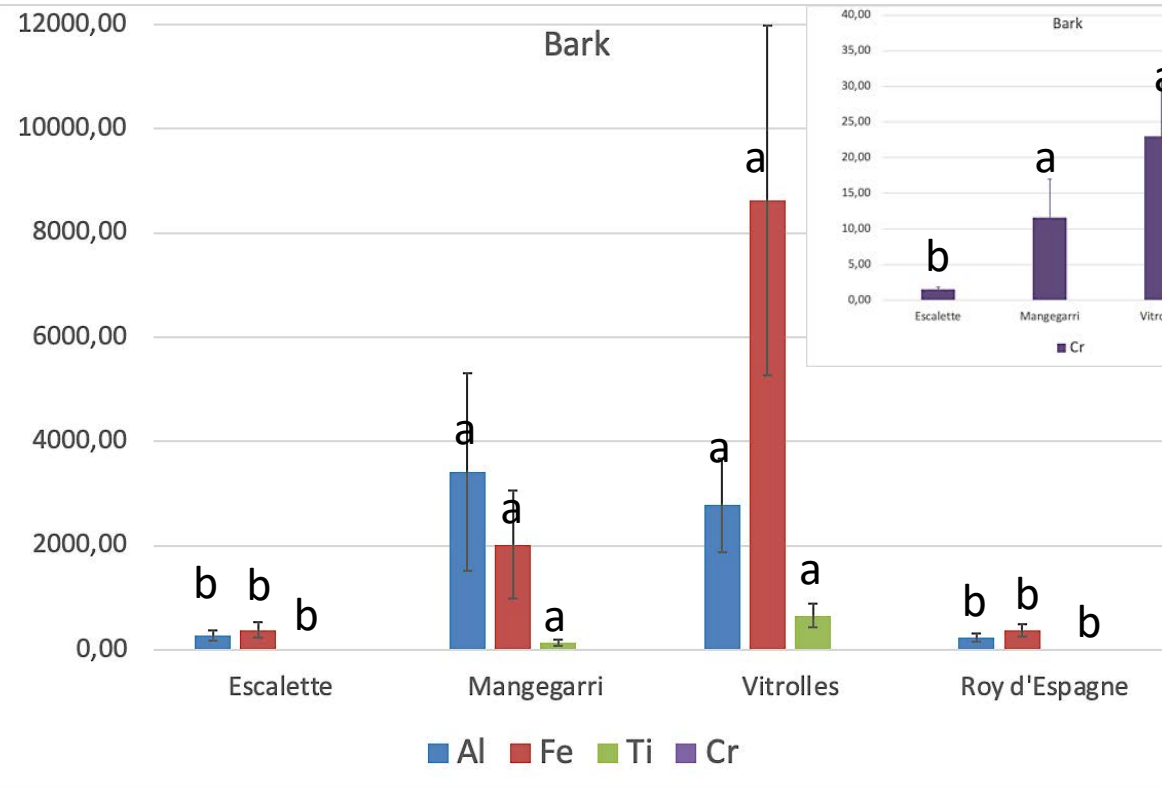
**Al**, **Fe**, and **Cr** significantly higher in Mangegarri and Vitrolles litters than Escalette and Roy d'Espagne litters

**Ti** significantly higher in Vitrolles than Escalette and Roy d'Espagne litters

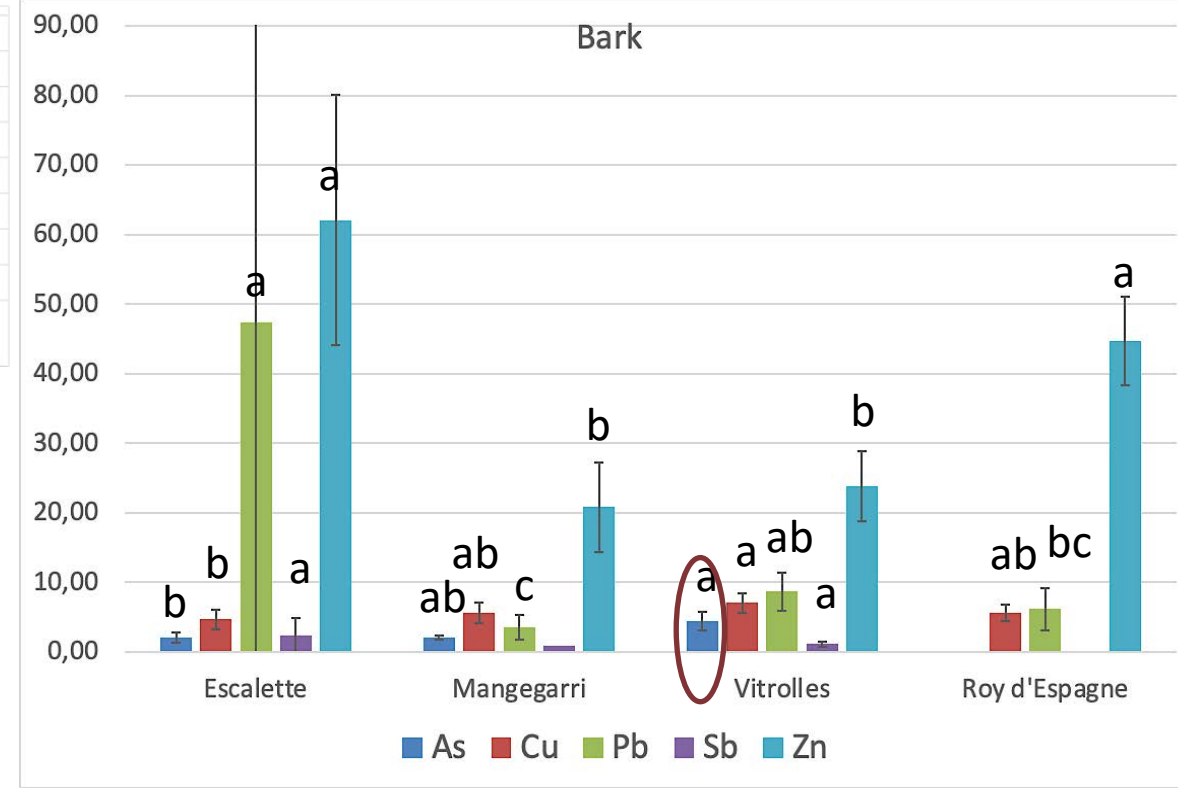
**As** in litter significantly higher in Vitrolles and Escalette than in Mangegarri and Roy d'Espagne

**Pb** in litter significantly higher in Escalette than Mangegarri and Roy d'Espagne

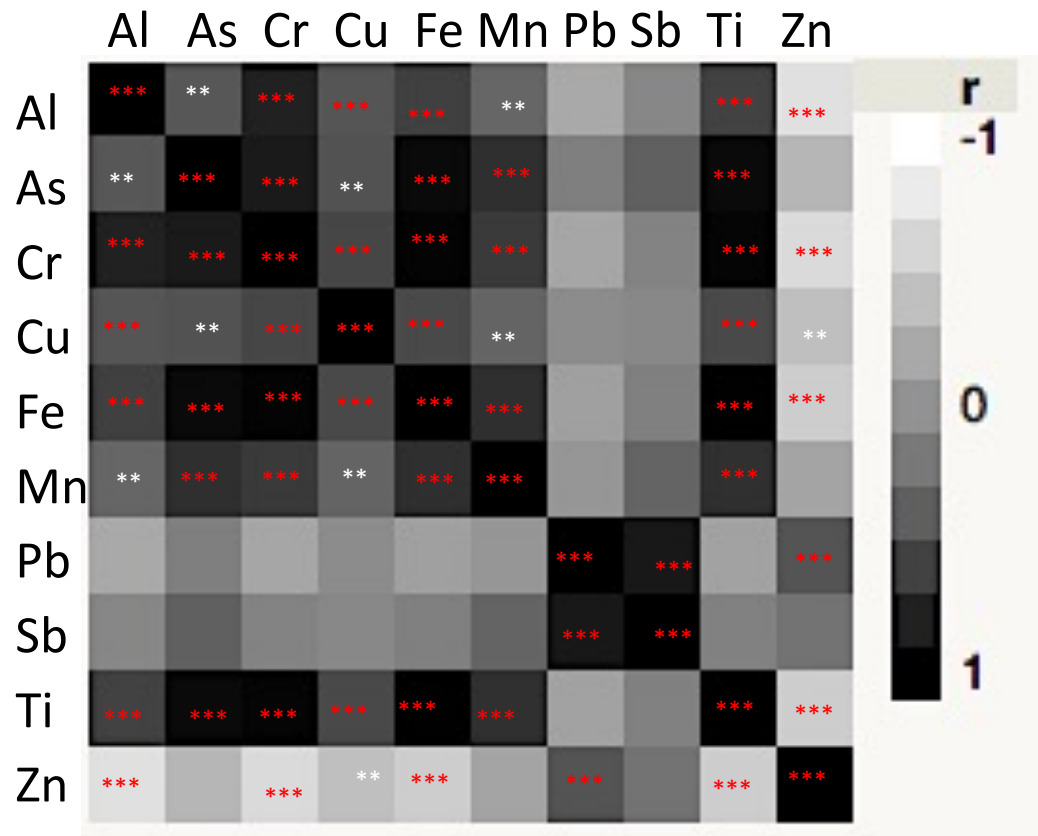
## Bark



**Al**, **Fe**, **Ti** and **Cr** significantly higher in Mangegarri and Vitrolles barks than Escalette and Roy d'Espagne barks

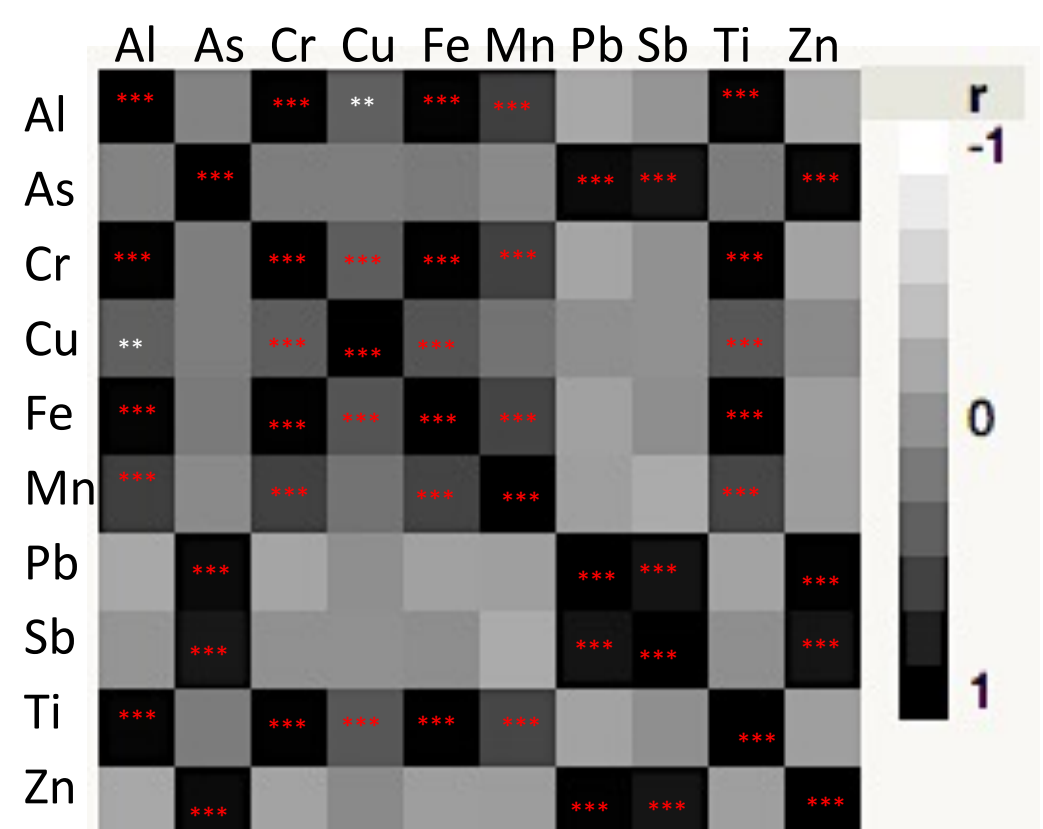


**As** in bark significantly higher in Vitrolles than Escalette  
**Pb** in bark significantly higher in Escalette than Mangegarri and Roy d'Espagne

Correlation between elements in **bark**

No significant correlation detected between **Pb** and **Sb** or **As** with other elements except **Pb/Zn** in barks  
 High positive correlations between **Ti**, **Fe**, **Al**, **Cr**

Linked to the type of particles

Correlation between elements in **needle litter**

High positive correlations between **Pb**, **As**, **Sb**, **Zn**  
 High positive correlations between **Ti**, **Fe**, **Al**, **Cr**, **Mn**

Linked to the industrial context

### What did we expect?

Bark and litter are able to trap particles

Bark and litter contents are linked to their soil environment



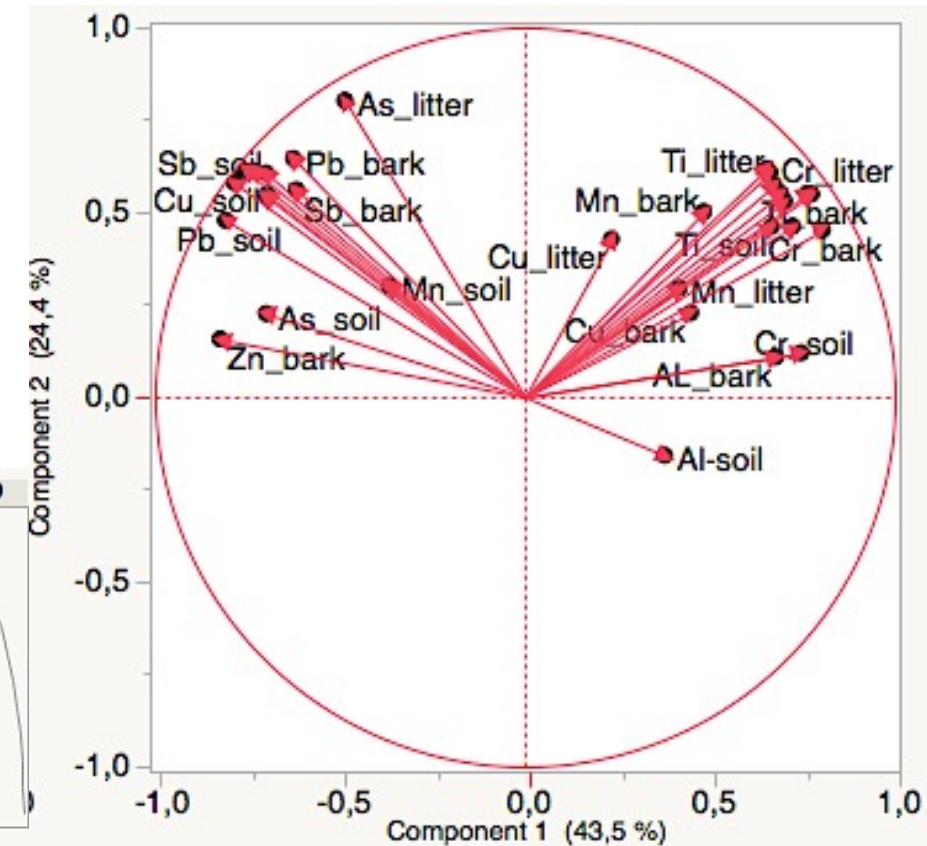
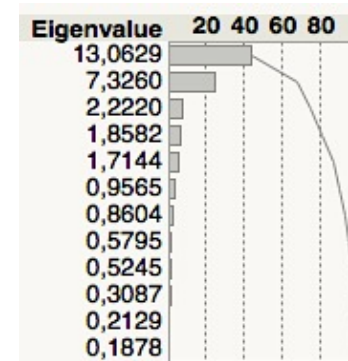
For **Al**, no significant correlation between Al contents in soil and litter  
But  $R_{\text{soil, bark}} = 0.52$  ( $p \leq 0.0001$ )

For **Fe**,  $r_{\text{soil, litter}} = 0.67$  and  $r_{\text{soil, bark}} = 0.84$  ( $p \leq 0.0001$ )

For **Ti**,  $r_{\text{soil, litter}} = 0.72$  and  $r_{\text{soil, bark}} = 0.77$  ( $p \leq 0.0001$ )

For **Cr**,  $r_{\text{soil, litter}} = 0.45$  and  $r_{\text{soil, bark}} = 0.62$  ( $p \leq 0.005$ )

Different modes of aeolian transport  
depending on elements and size of particles?



Principal component analysis

For **As**,  $r_{\text{soil, litter}} = 0.49$  and  $r_{\text{soil, bark}} = -0.51$  ( $p \leq 0.05$ )

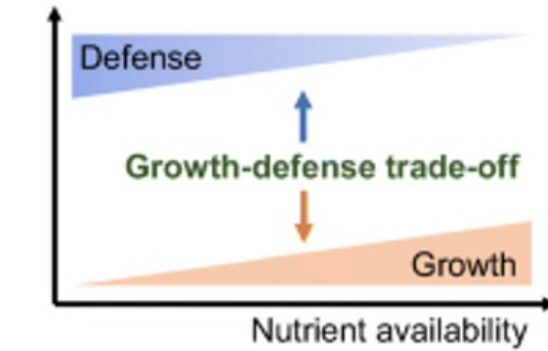
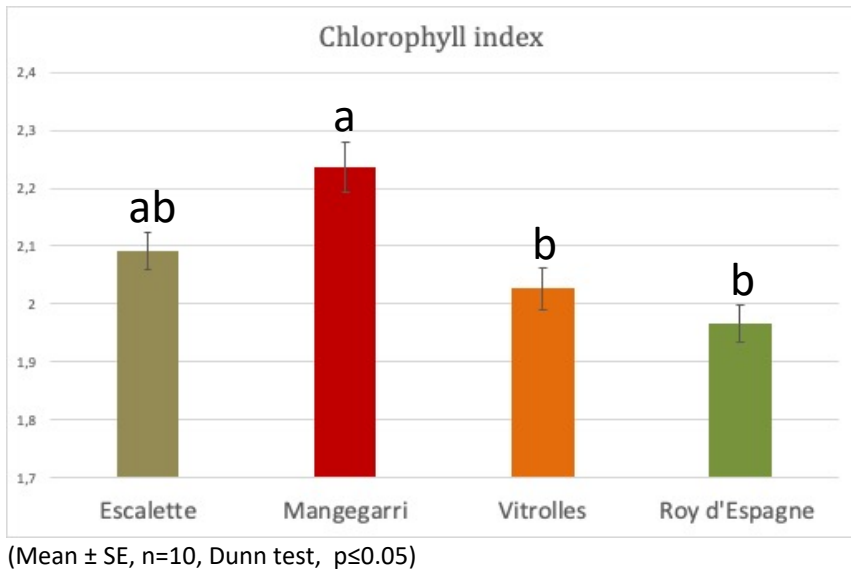
For **Pb**,  $r_{\text{soil, litter}} = 0.88$  and  $r_{\text{soil, bark}} = 0.75$  ( $p \leq 0.0001$ )

For **Sb**,  $r_{\text{soil, litter}} = 0.78$  and  $r_{\text{soil, bark}} = 0.87$  ( $p \leq 0.0001$ )

For **Zn**,  $r_{\text{soil, litter}} = 0.95$  and  $r_{\text{soil, bark}} = 0.66$  ( $p \leq 0.0001$ )

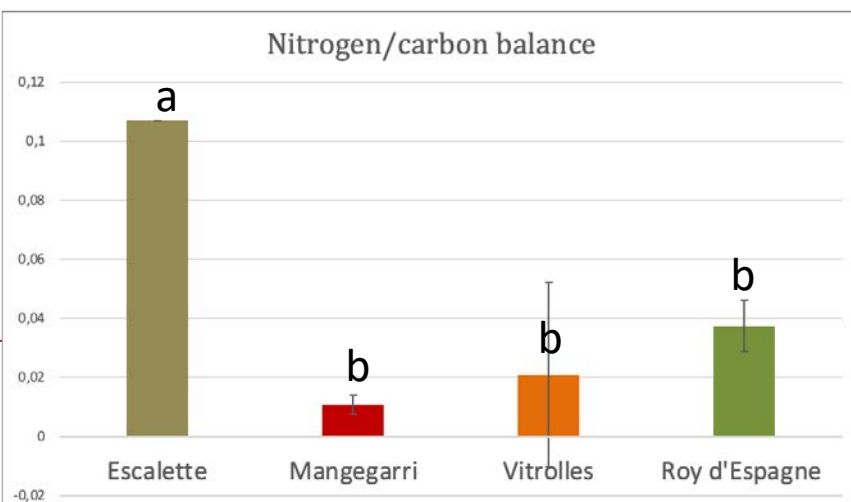
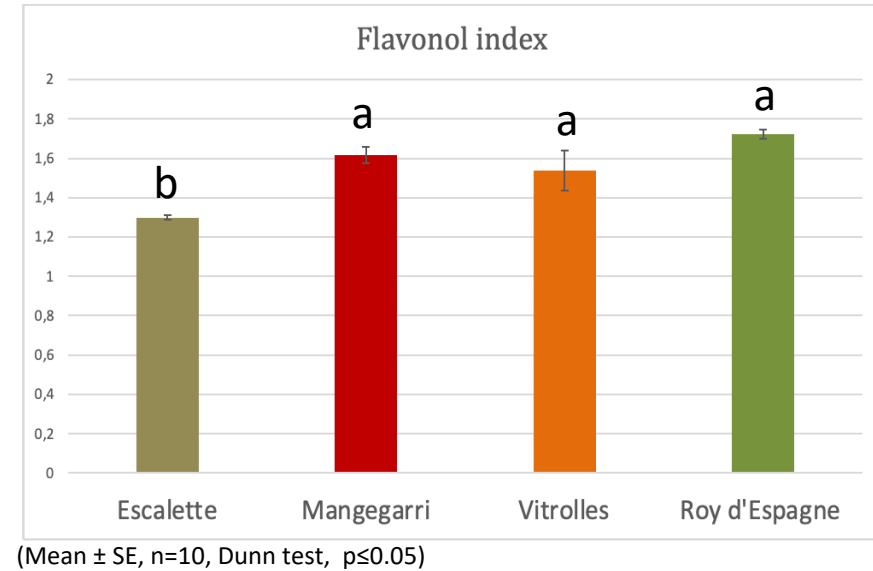
## Green needles

## Non-destructive analysis of plant primary and secondary compounds



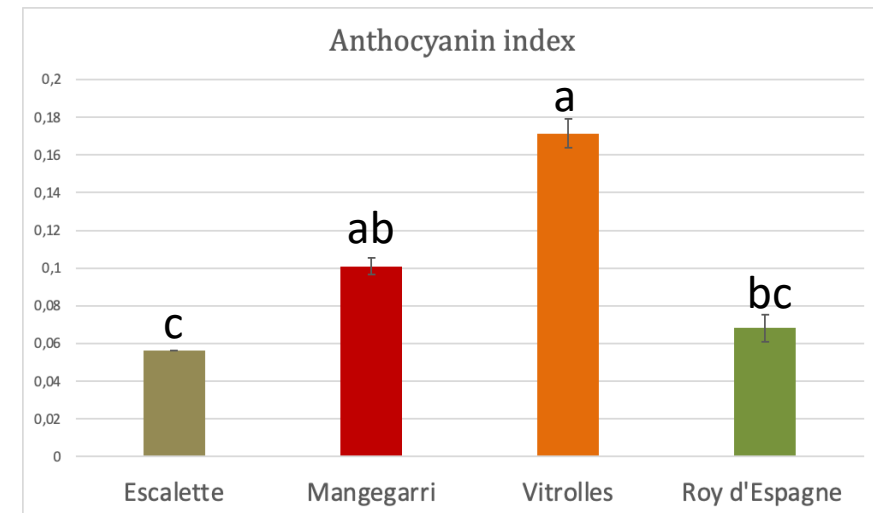
Our hypothesis:  
 exposure to metals and metalloids  
 ↓ chlorophyll content for growth  
 ↑ secondary compounds for defense

Not confirmed



physiological responses  
 or  
 optical responses?

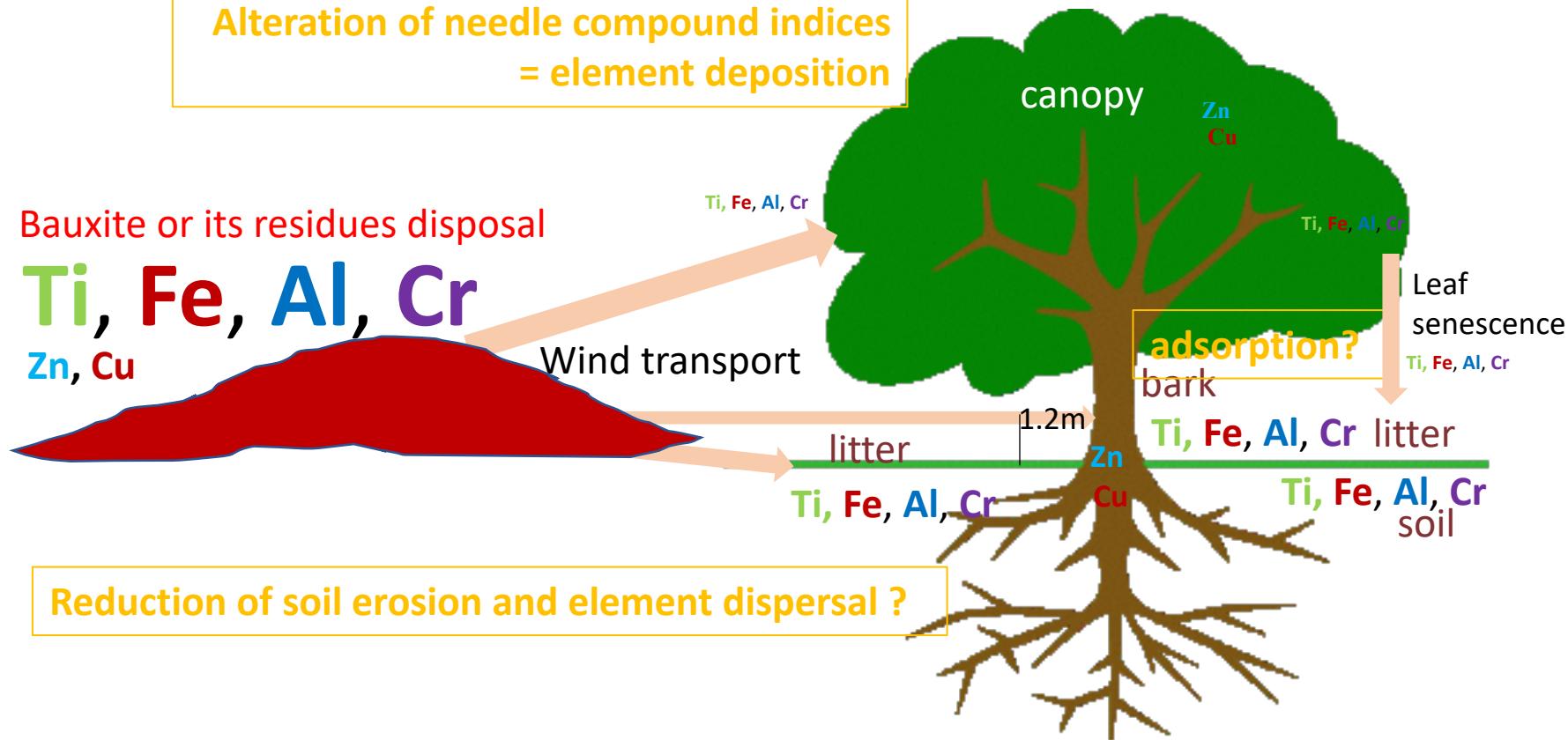
Treated data to limit  
 interference of  $\text{TiO}_2$   
But potential  $\text{FeO}_2$  interaction  
 that overestimates indices



## Return to our conceptual model

Hypothesis in Mangearri and Vitrolles

Alteration of needle compound indices  
= element deposition



Green needles, bark, litter:

- trap particles
- retain Ti, Fe, Al, Cr

Modes of wind transport may differ between particles:

- no significant correlation between Al contents in soil and litter
- low positive correlations for other elements between soils and litters

Two ways of trapping in litters:

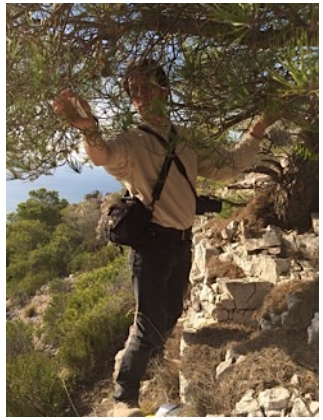
- needle senescence after particle exposure
- aeolian deposits on litter

A complex model

Potential role of Aleppo pine as vegetative barrier confirmed

but flammable species in an industrial context under Mediterranean climate raises questions

Many thanks to all contributors to this work, particularly our students, to OHM BMP for financial support, to ALTEO society, Vitrolles Town hall and CD13 for enabling access to the study sites, and to J. Viglione (Eco-Med) for his linking people's action



Journées Scientifiques :  
"Bauxite Résidues"

Aix-en-Provence, du 08 au 09 juin 2021