



HAL
open science

Enhancing democratic participation in territorial energy planning

Baptiste Bedessem

► **To cite this version:**

Baptiste Bedessem. Enhancing democratic participation in territorial energy planning. Action versus inaction facing climate change, Jun 2024, Strasbourg, France. . hal-04624637

HAL Id: hal-04624637

<https://hal.science/hal-04624637v1>

Submitted on 26 Jun 2024

HAL is a multi-disciplinary open access archive for the deposit and dissemination of scientific research documents, whether they are published or not. The documents may come from teaching and research institutions in France or abroad, or from public or private research centers.

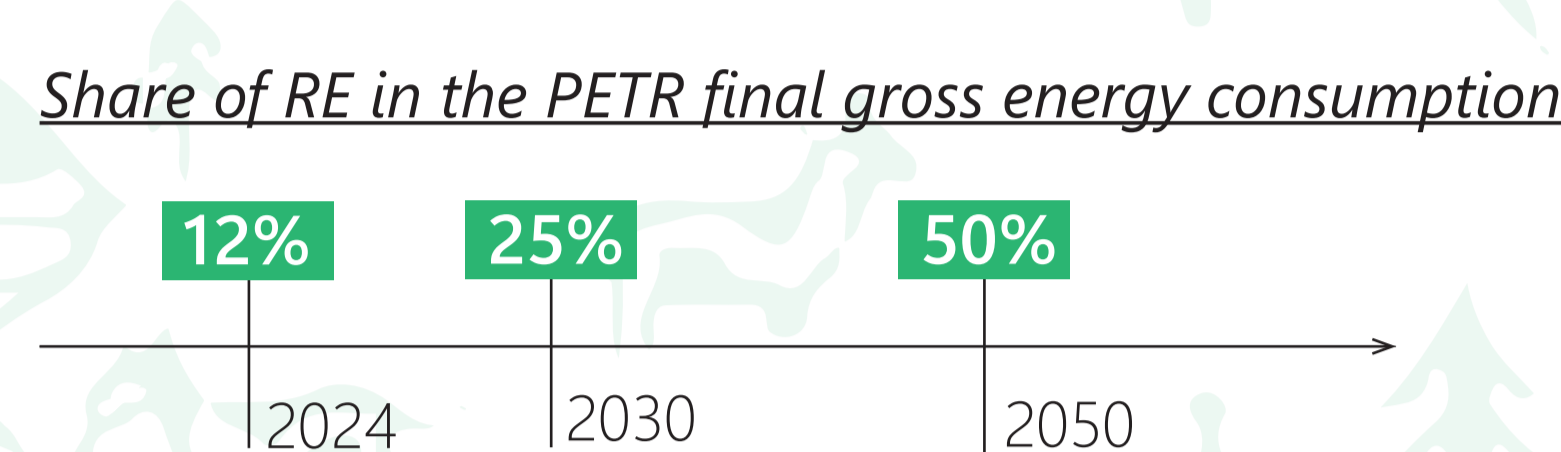
L'archive ouverte pluridisciplinaire **HAL**, est destinée au dépôt et à la diffusion de documents scientifiques de niveau recherche, publiés ou non, émanant des établissements d'enseignement et de recherche français ou étrangers, des laboratoires publics ou privés.

ENHANCING DEMOCRATIC PARTICIPATION IN TERRITORIAL ENERGY PLANNING

Development and analysis of a citizen science approach in Alsace

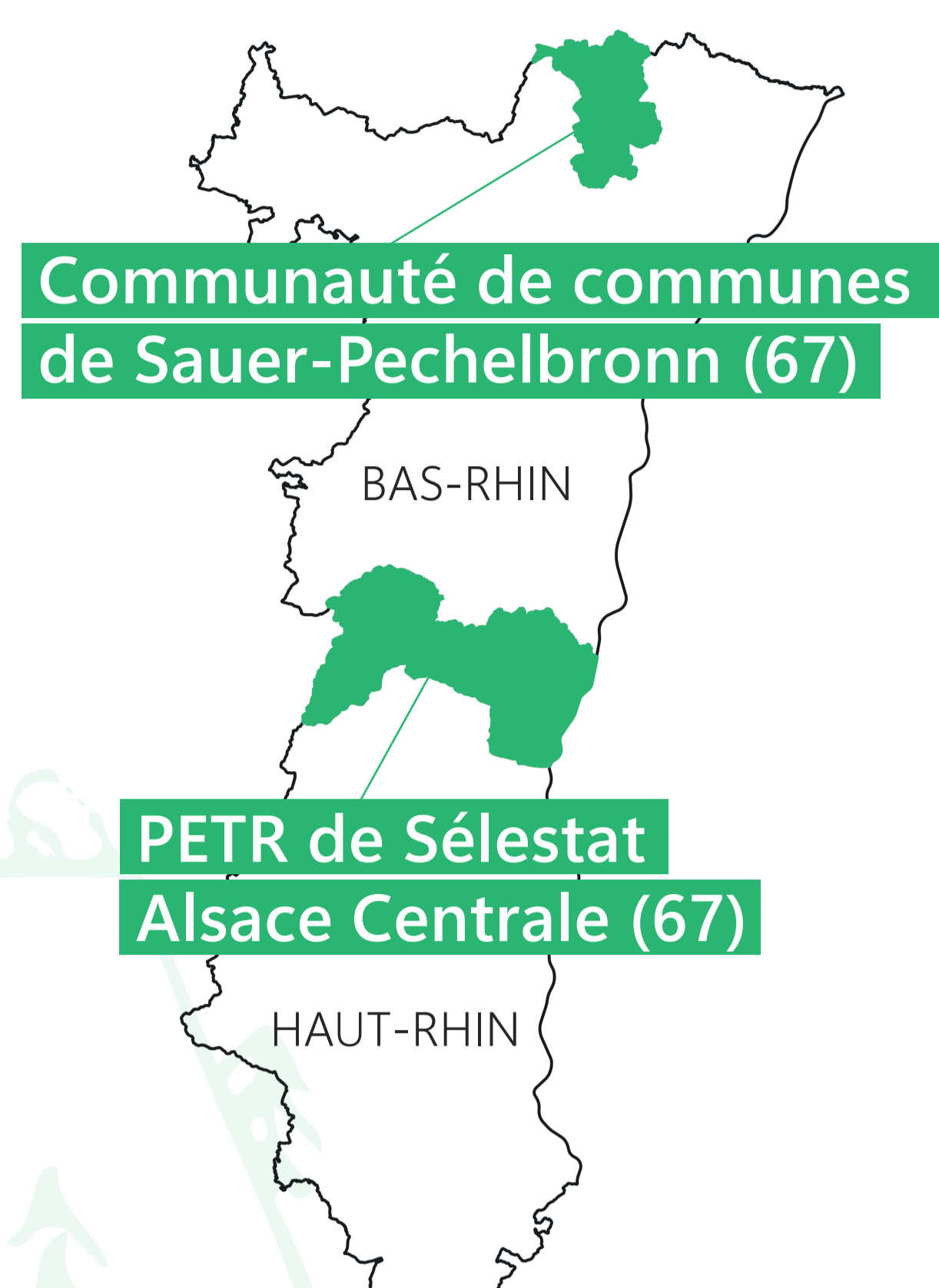
1 Context

The **Pôle d'Équilibre Territorial et Rural of Sélestat Alsace Centrale**, is a regional consortium comprising 52 communes with a population of 80,000. In 2022, the PETR approved a **Territorial Climate Air Energy Plan (PETR)**, aiming to increase the share of renewable energy (RE) in the territory's final gross energy consumption :

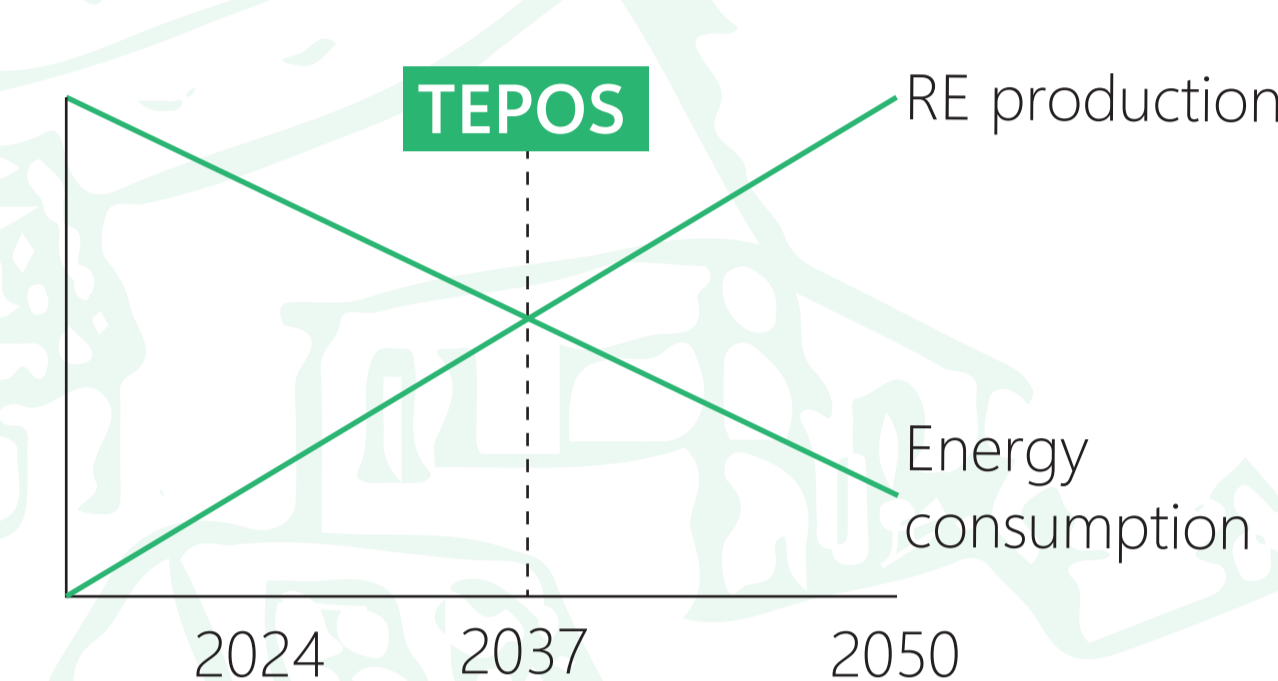


Similarly, the **Communauté de Communes of Sauer-Pechelbronn**, consisting of 24 communes and 19,000 inhabitants, is committed to becoming a "positive energy territory" (TEPOS) by 2037, as outlined in a contract for ecological transition signed with the State and the Grand-Est Region.

Geographic location of the Alsatian partners



TEPOS Objective of the Communauté de communes of Sauer-Pechelbronn



Both local authorities are now keen to spatialise these objectives and engage the citizens in this endeavour.

2 Origin of the PAYSAGES project

Driven by the urgency to intensify the energy transition and foster the development of renewable energy projects, these two local communities, along with an NGO **Collectif Paysages de l'après pétrole (PAP)**, the **MOSAIC** team from the **National museum of natural history (MNHN)**, and the research laboratory **LISIS** of the **French national institute for agriculture, food and environment (INRAE)**, applied to a French agency for ecologic transition (ADEME) call for projects.

The ambition is to develop a participatory platform designed to encourage public discussion on the local territory's energy future, striving for the development of renewable energy initiatives.

This project, funded by ADEME with a budget of 300.000 €, will run from January 2024 to January 2027.

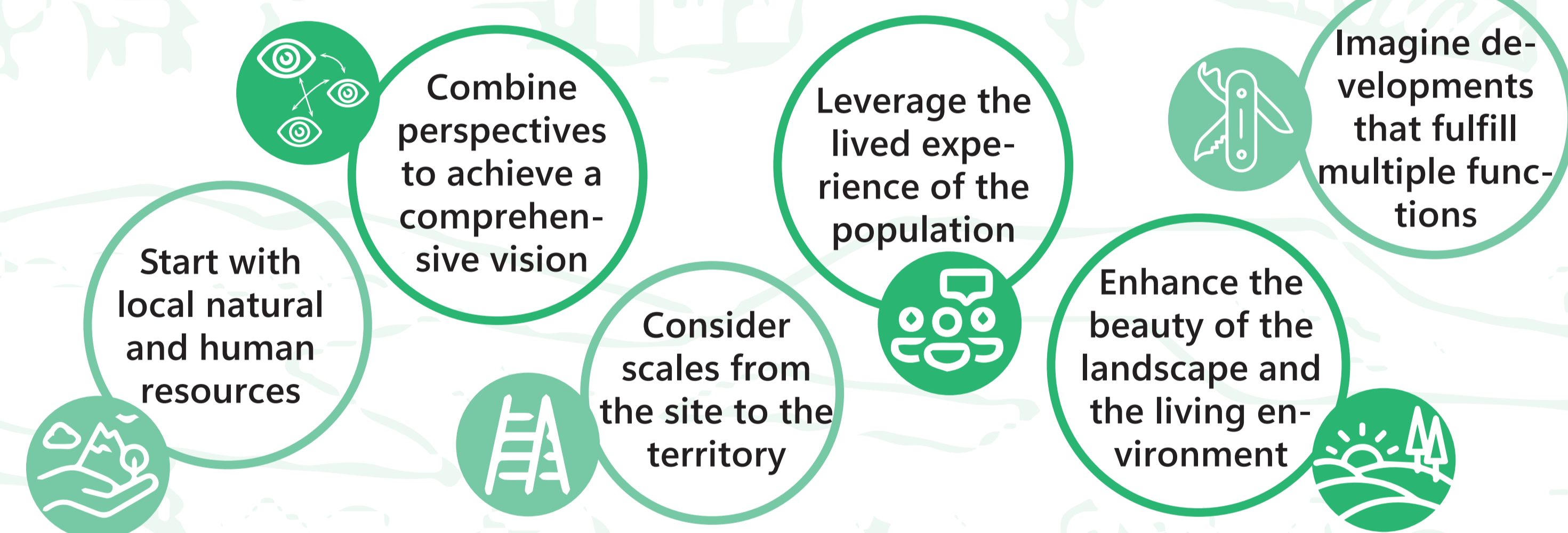


Landscape from the Ortenbourg Castle in Scherwiller (PETR Sélestat Alsace Centrale), April 2024

3 A landscape approach

To achieve these goals, the project will rely on a landscape approach. This method not only facilitates the spatialisation of the energy transition but also enhances citizen awareness, and leverages their intimate knowledge of the territory. By preventing potential conflicts regarding renewable energy development and facilitating public discussions, this approach may foster energy democracy.

The landscape approach to imagine the after-oil landscapes (PAP)



The project will create an online platform for citizen engagement based on the **ETAPE Paysage** tool developed by PAP. Based on the principles of the landscape approach, this serious game has been designed to support territories' energy transition by collecting landscape data and enabling the collaborative spatialisation of energy transition scenarios. Local stakeholders are invited to identify landscape units and share data regarding the territories' characteristics, shaping a collectively desired spatialized energy plan.

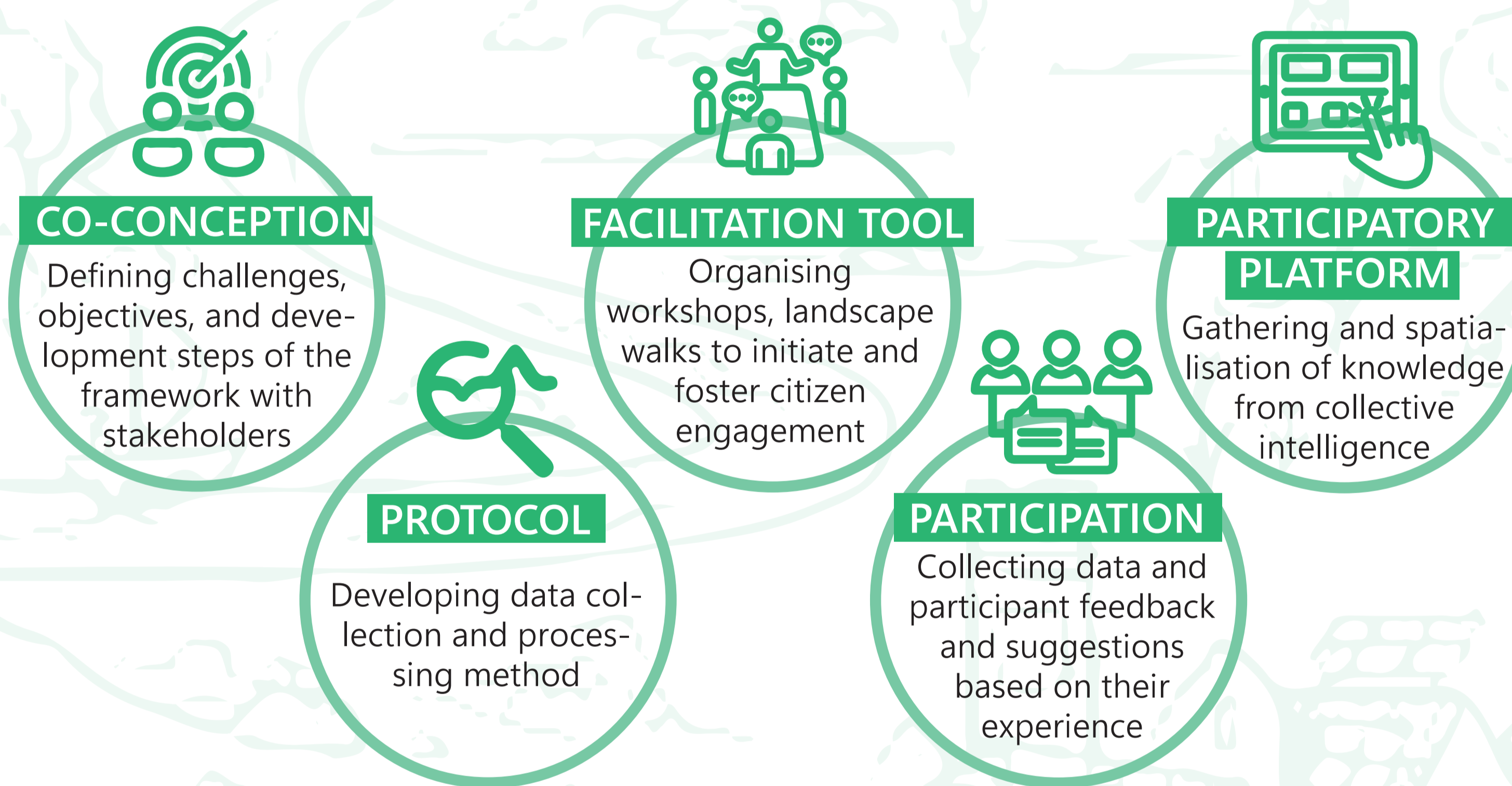


Picture of the ETAPE Paysage tool (PAP)

4 Energy planning spatialisation

The project's primary goal is to develop a digital platform in partnership with MOSAIC and PAP. Built on the **ETAPE Paysage** tool, this platform will utilise local expertise to guide citizens in sharing landscape data for energy planning. This participatory approach enables inhabitants to express their opinions, ask questions, and make recommendations through online resources and community-led activities, shaping a more inclusive and informed energy transition process.

Scientific and technical program of the project (MNHN)



Out of providing valuable information and insights, this contributory data collection method may serve as a catalyst for engagement and support citizens' learning and legitimacy to join public deliberations.

By engaging and empowering citizens in defining their territory's energy futures, the project seeks to improve the quality of public decision-making, facilitate deliberation, and build a collective vision for the future. This collaborative effort is expected to result in more legitimate and effective implementations of renewable energy initiatives.

Moreover, the project aims to establish a pilot model that can be replicated in other regions.

5 Partners and their roles in the project

