



**HAL**  
open science

## The construction of biodiversity as a boundary object within the OHMi Tésékéré

Priscilla Duboz, Papa Ibnou Ndiaye, Gilles Boëtsch, Aliou Guissé

### ► To cite this version:

Priscilla Duboz, Papa Ibnou Ndiaye, Gilles Boëtsch, Aliou Guissé. The construction of biodiversity as a boundary object within the OHMi Tésékéré. International Symposium of LabEx DRIIHM 2024, Jun 2024, Montpellier, France. , 2024, 10.34972/driihm-d06d98 . hal-04622431

**HAL Id: hal-04622431**

**<https://hal.science/hal-04622431v1>**

Submitted on 24 Jun 2024

**HAL** is a multi-disciplinary open access archive for the deposit and dissemination of scientific research documents, whether they are published or not. The documents may come from teaching and research institutions in France or abroad, or from public or private research centers.

L'archive ouverte pluridisciplinaire **HAL**, est destinée au dépôt et à la diffusion de documents scientifiques de niveau recherche, publiés ou non, émanant des établissements d'enseignement et de recherche français ou étrangers, des laboratoires publics ou privés.

# The construction of biodiversity as a boundary object within the OHMi Tèssékéré



Priscilla DUBOZ<sup>1</sup>, Papa Ibnou NDIAYE<sup>2,3</sup>, Gilles BOËTSCH<sup>3</sup>, Aliou GUISSSE<sup>3,4</sup>

<sup>1</sup>UMR 7268 "Anthropologie, Droit, Ethique et Santé" (CNRS, AMU, EFS), Marseille, France

<sup>2</sup>Département Biologie Animale, Faculté des Sciences et Techniques, Université Cheikh Anta Diop de Dakar, B.P 5005 Dakar, Sénégal

<sup>3</sup>IRL 3189 "Environnement, Santé, Sociétés" (CNRS, UCAD, UGB, CNRST, USTTB), Université Cheikh Anta Diop de Dakar, B.P 5005 Dakar, Sénégal

<sup>4</sup>Département Biologie Végétale, Faculté des Sciences et Techniques, Université Cheikh Anta Diop de Dakar, B.P 5005 Dakar, Sénégal

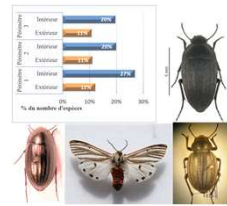
## Introduction

The Great Green Wall, a project initially developed to restore degraded ecosystems in the Sahel, includes a major reforestation component. This logically led OHMi ecologists to conduct studies on the ecological benefits of these restoration actions. These studies bear the hallmark of biodiversity assessment, as an expression of biological diversity, and are mostly derived from comparisons between the interior of the Great Green Wall plots (the founding event of OHMi Tèssékéré) and the exterior of these plots. This was the starting point for the mobilization of the notion of biodiversity by different disciplines and actors of the OHMi Tèssékéré.

The objective of this poster is to show how biodiversity has been set up as a boundary object within the OHMi Tèssékéré, thus allowing actors with different epistemic cultures to dialogue and, beyond that, to build common projects around the same object (Demeuleunaere 2009).

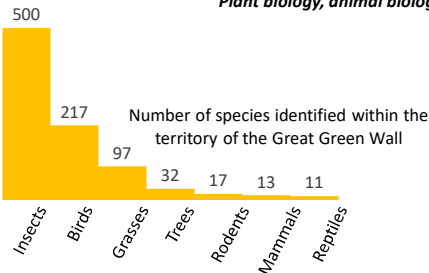
## Biodiversity

### Great Green Wall : influence of the founding event



Example : relative abundance of insects within and outside GGW plots

**Disciplines :**  
Plant biology, animal biology, genetics

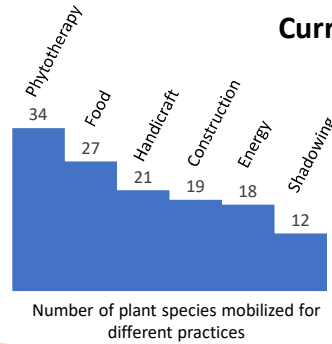


**Disciplines :**  
Anthropology, sociology, political ecology

### For international actors

- Classification of the Koily Alpha community nature reserve as a Key Biodiversity Area (Government of Senegal)
- Implementation of the Great Green Wall accelerator in Senegal (International funders)

### Current uses



Number of plant species mobilized for different practices



**Disciplines :**  
Ethnobotany, organic chemistry, ethnozoology

**Monkeys**  
Hairs : used to trigger itching in a troublemaker  
Meat : used to fight against fatigue



**Vultures**  
Head : used to increase intelligence  
Nest : used to make the body invulnerable (« Toul »)



### Structuring fact : aridification

### Extinct uses

**Spotted hyena**  
Skin : field protection  
Nose : used to increase the sense of smell



**Commiphora africana**  
Toothpicks



### For populations

- Witnesses about the past Ferlo agree on a great biodiversity loss :
- the surroundings were described as a very dense forest tough to cross (so a lot of paturage and ecosystem resources)
  - there were many wild animals hunted for consumption or to prevent them to assault cattle

Biodiversity loss is associated with poverty, precarity and bad health, from a human and environmental standpoint.



## Conclusion

Biodiversity concentrates the complexity of the socio-ecosystem studied by OHMi Tèssékéré, and thus encourages interdisciplinarity. As an object with porous boundaries, it enables dialogue between ecology, ethnobotany, organic chemistry, anthropology and political ecology, among others; its study involves both the structuring fact of the OHMi (aridification), its founding event (Great Green Wall), its focal object (Tèssékéré territory), but also questions a more global, international, level.

Demeuleunaere E. 2009. Agriculteurs et chercheurs dans la gestion à la ferme des ressources génétiques : dynamiques d'apprentissage autour de la biodiversité. In : Hervieu B, Hubert B. *Sciences en campagne, Regards croisés, passés et à venir*. Paris : Editions de l'Abu, pp.189-199

Diatta D. Sous presse. Habiter le Sahel : usage des plantes dans le Ferlo. In Duboz P, Ndiaye P, Boëtsch G, Guisse A. *Dynamiques sahéliennes*. Paris : Atlantide.

Guisse O. Sous presse. Mémoire de l'environnement de la zone d'extension de la Grande Muraille Verte au Sénégal. Focus sur la faune aviaire et mammalienne. Cahiers de l'Observatoire Hommes-Milieus international Tèssékéré, 12.

Julliard L, Duboz P, Ndiaye P, Guisse OH. 2022. *Environmental Memories in the Ferlo (Senegal)* (Poster). International Symposium of Labex DRIIHM, 20-22 juin 2022, Nantes, France.

Macia E, Allouche J, Basimbé Sagna M, Diallo AH, Boëtsch G, Guisse A, ... Duboz P. 2023. The Great Green Wall in Senegal: questioning the idea of acceleration through the conflicting temporalities of politics and nature among the Sahelian populations. *Ecology and Society* 28(1):31.

