



**HAL**  
open science

# Multiscale Mechanical Modeling of Skeletal Muscle: A Systemic Review of the Literature

Aude Loumeaud, Philippe Pouletaut, Sabine Bensamoun, Daniel George,  
Simon Chatelin

## ► To cite this version:

Aude Loumeaud, Philippe Pouletaut, Sabine Bensamoun, Daniel George, Simon Chatelin. Multiscale Mechanical Modeling of Skeletal Muscle: A Systemic Review of the Literature. *Journal of Medical and Biological Engineering*, 2024, 10.1007/s40846-024-00879-3 . hal-04621020

**HAL Id: hal-04621020**

**<https://hal.science/hal-04621020>**

Submitted on 22 Jun 2024

**HAL** is a multi-disciplinary open access archive for the deposit and dissemination of scientific research documents, whether they are published or not. The documents may come from teaching and research institutions in France or abroad, or from public or private research centers.

L'archive ouverte pluridisciplinaire **HAL**, est destinée au dépôt et à la diffusion de documents scientifiques de niveau recherche, publiés ou non, émanant des établissements d'enseignement et de recherche français ou étrangers, des laboratoires publics ou privés.

# Multiscale mechanical modeling of skeletal muscle: a systemic review of the literature

Aude Loumeaud<sup>1,2</sup>, Philippe Pouletaut<sup>2</sup>, Sabine F. Bensamoun<sup>2</sup>,

Daniel George<sup>1</sup>, Simon Chatelin<sup>1\*</sup>

<sup>1</sup>University of Strasbourg, CNRS, Inserm, ICube UMR 7357, Strasbourg, France

<sup>2</sup>Université de technologie de Compiègne, CNRS, BMBI UMR 7338, Compiègne, France

\*Corresponding author: [schatelin@unistra.fr](mailto:schatelin@unistra.fr)

## ORCID:

Aude Loumeaud (0009-0005-7987-867X); Philippe Pouletaut (0000-0001-9700-040X); Sabine F. Bensamoun (0000-0003-4290-0173); Daniel George (0000-0003-3310-8141); Simon Chatelin (0000-0001-8999-3608)

**Abstract.** Purpose: From the myofibrils to the whole muscle scale, muscle micro-constituents exhibit passive and active mechanical properties, potentially coupled to electrical, chemical, and thermal properties. Experimental characterization of some of these properties is currently not available for all muscle constituents. Multiscale multiphysics models have recently gained interest as a numerical alternative to investigate the healthy and diseased physiological behavior of the skeletal muscle.

Methods: This paper refers to the multiscale mechanical models proposed in the literature to investigate the mechanical properties and behavior of skeletal muscles. More specifically, we focus on the scale transition methods, constitutive laws and experimental data implemented in these models.

Results: Using scale transition methods such as homogenization, coupled to appropriate constitutive behavior of the constituents, these models explore the mechanisms of ageing, myopathies, sportive injuries, and muscle contraction.

Conclusion: Emerging trends include the development of multiphysics simulations and the coupling of modeling with the acquisition of experimental data at different scales, with increasing focus to little known constituents such as the extracellular matrix and the protein titin.

**Keywords.** Multiscale, Multiphysics, Numerical modeling, Skeletal muscle, Biomechanics, Homogenization

## Statements and Declarations

**Fundings.** The work was supported by the Research Department of UTC within the framework of AMI International and also by the Interdisciplinary Thematic Institute ITI HealthTech, as part of the ITI 2021–2028 program of the University of Strasbourg, CNRS and Inserm, through IdEx Unistra (Grant number ANR-10-IDEX-0002) and SFRI (STRAT’US project, Grant number ANR-20-SFRI-0012).

**Competing Interests.** The authors have no relevant financial or non-financial interests to disclose.

**Author Contributions.** All authors contributed to the realization of this review. The first and last drafts of the manuscript were written by Aude Loumeaud and all authors commented on the successive versions of the manuscript. All authors have read and approved the final manuscript.

**Ethics Approval.** The authors confirm that the study was approved by the appropriate institutional and national research ethics committee and certify that the study was performed in accordance with the ethical standards as laid down in the 1964 Declaration of Helsinki and its later amendments or comparable ethical standards.

**Consent to Participate.** The authors confirm that informed consent to participate in the study has been obtained from participants when necessary.

**Consent to Publish.** Individuals consent to participate in this study, and do not object to having their data published in a journal article. The authors attest to have sought consent from individuals to publish their data prior to submitting this paper.

**Data Availability Statement.** The authors confirm that prior consent has been obtained for all data as soon as necessary.

# 1. Introduction

Skeletal muscles present a multiscale architecture [1,2], as illustrated in Fig 1. To each scale corresponds a specific architecture with associated constituents, each of which is likely to contribute to the active or passive mechanical properties of the overall skeletal muscle [3,4]. At the macroscopic scale (of the order of centimeter), the muscle is constituted of several adjacent mesoscale fascicles. These fascicles in turn contain groups of tightly packed muscle fibers or muscle cells that constitute the microscale (from 10 to 100  $\mu\text{m}$  in diameter). Muscle fibers can be arranged in different architectures within the muscle depending on the muscle's function in the body [5]. All the aforementioned structures are separated by thin layers of connective tissue known as extracellular matrix [6,7]. Fibers are constituted by the submicron scale myofibrils (from 1 to 2  $\mu\text{m}$  in diameter) and cellular components. Each of these myofibrils is an assembly of sarcomeres in series that contain proteins such as actin, titin and myosin. Other cellular components include the sarcoplasmic reticulum, that propagates neural signal as a chemical potential down to the sarcomeres. They are physically linked to extracellular structures through costameres [8–10]. On the other end of this linkage, the extracellular matrix consists in collagen and elastin fibers embedded in a matrix of proteoglycans [11,12].

The mechanical properties of the smaller scale components result in a global anisotropic viscohyperelastic behavior of the skeletal muscle [7,1,13]. The passive mechanical properties in the skeletal muscle are attributed to two proteins, namely titin in the fibers [14–16] and collagen in the extracellular matrix [1,17–20]. Transmembrane proteins such as dystrophin that belong to the costameres also contribute to lateral force transmission [1,21] between muscle fibers and extracellular matrix. During muscle activation, the change in mechanical properties is due to the sarcomere contraction attributed to the binding of proteins actin and myosin, namely the cross-bridge cycling theory. Some evidence also suggests an active bound formation between titin and actin during activation, called force enhancement [22]. The skeletal muscle mechanical properties are related to the muscle's physiological state. To study the functional or the structural properties of the skeletal muscle, *in vivo*, *ex vivo* or *in vitro*, experiments can be conducted. These investigations are however limited due to technical difficulties when it comes to measure the mechanical properties at smaller scales, especially in human patients [23]. Thus, tools such as multiscale biomechanical modeling are implemented [24,25]. These tools first establish the mechanical link over scales in the organ using several approaches such as analytical homogenization, numerical homogenization, and averaged results, which are accounting for the different constituents of the microstructure and their specific geometry at each scale. Then, the mechanical constitutive laws for the constituents must be identified, including passive and active components as well as potential multiphysics components (such as electrical, chemical or thermal specificities).

In this study, we describe the current state of the art in multiscale and multiphysics biomechanical numerical modeling, with a focus on models describing the skeletal muscle mechanical behavior from myofibrils to the whole organ, excluding smaller than submicron [26] and larger than macroscopic [27–29] scales. After describing the main modeling approaches, we will expose and compare the mechanical constitutive laws implemented at the different scales for passive and active mechanical models as well as multiphysics models.

## 2. Multiscale modeling

To establish the link from one scale to another, several approaches have been proposed in the literature for skeletal muscle modeling, which can be classified into three main categories: analytical homogenization, numerical homogenization, and averaged results.

### 2.1. Model geometry

Multiscale modeling implies a definition of a simplified geometry that is representative of the skeletal muscle at the considered scale, based on hypotheses on the anatomical constituents [30]. Here we discuss implementation of realistic and idealized geometries. Realistic geometries tend to reproduce medical imaging acquisitions [31] and are implemented in skeletal muscle multiscale models mostly from microscopy cross section images [32–37]. Kuravi and colleagues propose a 3D realistic geometry obtained from registration and segmentation protocols on successive histological cross sections, resulting in a 3D reconstruction of a cubic muscle sample at the microscale [32,33]. Realistic geometries can also be AI generated [38].

However, most multiscale models do not use microscopy images directly, but rather simplified geometries either in 1D, 2D or 3D (Fig. 2). 1D elements are used to represent constituents at the submicron scale such as

titin represented with springs [39–41], or myofibrils and collagen represented with bars [42] (Fig2.A). 1D muscle fibers are modeled at the microscale as springs [43–45] and as bars [39–41] (Fig2.B). At the microscopic scale, some authors assume that muscle fibers are parallel to each other. Thus 2D plane geometries representing a muscle cross section are often extruded alongside the direction orthogonal to the plane, generating a 3D geometry with regular arrangements of parallel muscle fibers such as perfectly circular [46–48] (Fig 2.C) or hexagonal [49,50] (Fig 2.D). Perfectly circular arrangements are simple of use especially considering analytical homogenization methods, as these methods often consider elliptical or cylindrical fiber reinforced composites [51]. However, the maximum fiber packing or fiber volume fraction (FVF) that can be obtained using this arrangement is 90.7% whereas the muscle fiber FVF in healthy muscles reaches 95%. Moreover, this geometry creates local section variations in the ECM, which are not representative of the real microstructure [52]. Hexagonal muscle fibers overcome these drawbacks, yet they consider fibers with equal geometries and areas, while the real microstructure is more random and contains fibers with different sizes [53]. Thus, an increasing trend is the use of randomized regular arrangements such as Voronoi tessellations [54]. Voronoi tessellations or a Voronoi diagram constitute in partitions of a plane into convex regions also called cells. The cells are defined by a given set of points called Voronoi seeds or centroids. Each Voronoi region is defined by a seed. Any point belonging to that region is closer to that seed than to any other seed present in the set. The obtained regions vary in size and shapes. Periodic Voronoi tessellations are obtained by duplicating the seeds contained in a 1x1 region into a 3x3 grid and intersecting the obtained Voronoi diagram by a 1x1 bounding box (Fig 2.E). This specific arrangement has been used for periodic numerical homogenization [55–61]. Some authors also define curved-edge Voronoi tessellations [32,33,57] using different methods to round up the obtained Voronoi regions, arguing that the realistic geometry does not contain sharp angles. At the mesoscale, fascicles and extracellular matrix have been also represented using Voronoi tessellations [62]. At the macroscale, idealized 3D muscle geometries include rectangular parallelepiped and idealized fusiform muscle shape [43–45,55] (Fig 2.F).

In the specific context of homogenization, the representative geometry is named unit cell or Representative Volume Element (RVE) [30,63]. Recently, tools that can be used to generate RVE in Finite Element software have been developed [62,64,65]. They allow to automatically generate microscale circular arrangements [65], submicron scale to mesoscale arrangements including Voronoi tessellations [62] and periodic boundary conditions [64], that have specific application for numerical homogenization or averaged values scale transitions.

## 2.2. Scale transition approaches

Homogenization is currently the most widely used approach for multiscale modeling of skeletal muscle. Homogenization methods have been developed for the study of multiscale materials [66–70]. Thus, these methods consider two separate spatial scales: the microscopic scale where the material presents a heterogeneous microstructure, and the macroscopic scale, where the material can be supposed homogenous, as the heterogeneities' dimensions are considered neglectable. Homogenization methods approximate the mechanical behavior of the macroscopic scale material by computing the effective mechanical properties of an equivalent homogeneous material which are representative of the microscopic constituents' behavior. They provide a link from the microscopic scale to the macroscopic scale (homogenization) and sometimes an inverse link from the macroscopic scale to the microscopic scale (localization). There exists two main homogenization methods families, namely the numerical homogenization methods [71], which require the use of specific simulation tools, and the analytical homogenization methods [72] which can be applied at the different scales at which we seek to model skeletal muscle.

Homogenization methods require assumptions and definition of i) the heterogeneous material's geometry at the microscopic scale (RVE), ii) the constituent's constitutive behaviors, and iii) the interactions between the constituents at the microscopic scale. From the submicron scale to the mesoscale, skeletal muscle can be modeled as a fiber reinforced composite, with a FVF ranging from 90 to 95% for healthy muscles at the microscale. The muscle's microconstituents exhibit an anisotropic behavior [73–75] but are often assumed transversely isotropic in multiscale models. The aforementioned features constitute a current limitation for the use of most analytical homogenization methods developed for the investigation of fiber reinforced composites. Amongst these methods, the Mean Field Homogenization (MFH) methods [51] are based on the so-called dilute dispersion assumption, which considers that the fibers should be contained in dilute quantities in a very large matrix medium, therefore excluding materials with high FVF. Thus, other homogenization methods have been applied to skeletal muscle modeling. The Voigt and Reuss methods, also named rule of mixture laws, provide respectively upper and lower bounds for the behavior of the equivalent homogenous material in the case of a composite reinforced with long parallel fibers [69,70]. The Voigt method [70] assumes an isometric strain in the

composite and is consequently used for load cases in the direction of the fibers. Its counterpart is the Reuss method [69] which considers isometric stress in the composite. The advantage of these methods is their simplicity, as they are based only on the FVF, however this implies that they do not take the microscopic geometry into account. Due to this simplicity, homogenized skeletal muscle models often use the Voigt homogenization [46,50,59,76]. Another method based on asymptotic homogenization [77,78] has been used in skeletal muscle modeling [42]. Briefly, asymptotic homogenization assumes that at least one direction of space at the microscopic scale is periodic. The method relies on the displacement field's description at the microscopic scale using fast and slow space variables to account for this periodicity, and then on the application of finite series development to obtain an equation system. [77] developed an estimate for graphite sheets, that corresponds to the linearized behavior of the composite around a pre-stressed configuration. This method provides a better estimate than the Voigt and Reuss methods, at the cost of increased complexity. One last family of homogenization methods used in the context of skeletal muscle multiscale modeling is the second order methods, that have been developed for the modeling of nonlinear elastic composites. Second order methods based on estimates for sequentially laminated composites [79,80] have been implemented [55] and recently developed [81] for biological materials such as skeletal muscles. Through these methods, high FVF composite including constituents with transversely isotropic behavior can be replicated. [81] developed an estimate considering an anisotropic behavior for all microscopic constituents of a fiber reinforced composite. However, these methods exhibit great complexity and cannot account for complex geometries at the microscale.

Numerical or computational homogenization methods help overcome the limitations associated with analytical approaches to predicting the behavior of heterogeneous materials with complex geometries and solicitations. These homogenization methods are based on simulations of a discretized geometry. They can be separated in two categories, namely hierarchical and concurrent [71]. Hierarchical methods consider different simulations for the different scales, and information is passed from one simulation to another. Usually, one macroscopic scale simulation is linked to several microscopic scale simulations. The hierarchical approach is implemented through the use of Finite Element Modeling for skeletal muscle homogenization [36,48,50,55–59], mostly through the use of computational periodic homogenization [82] which requires the discretized microscopic scale geometry to be periodic in all space directions. Conversely, concurrent methods consider different scales simultaneously in different subvolumes of the same simulation and these scales may exchange information in hand-shake regions. Some authors also developed a concurrent numerical homogenization method using two different meshes in the same simulation and computing variable interpolation between the two structures [83] for muscle simulation [39–41,84]. Hierarchical methods can be used to increase the model resolution in the case of damaged areas. However, they do not allow to model Fracture Process Zones (FPZ) to simulate muscle tear for example. This is made possible by concurrent approaches that render a more precise interaction between the scales. Both methods are computationally expensive.

Some multiscale models do not use homogenization methods. Modeling approaches such as Hill's model [34,35,85,86] draw the link between scales as it separates the mechanical contribution of each microscale constituent. Another approach, namely micromechanical modeling, considers large microscale geometries representative of the skeletal muscle and considers the behavior of these composites identical to the macroscale muscle's behavior. This information on the macroscale can be obtained through the average value of stresses and strains over the considered representative volume or surface. This approach is simple and allows a more complex representation of geometry and behavior. This method is used to obtain information on the microstructure, however phenomena happening at the macroscale (i.e. FPZ) cannot be modeled with this approach, as it doesn't provide localization.

### 3. Constitutive laws for the passive behavior

Some of the multiscale mechanical models of skeletal muscle include multiphysics parts, such as chemical [86,39–41,44,45,87] or electrical ones [86,39–41,44,45], to mimic the muscle activation in an active component. It is therefore essential to distinguish, at each scale of skeletal muscle modeling, between passive and active components, both of which will influence the mechanical behavior of the muscle at higher scales. In this section, the passive mechanical constitutive laws implemented at the different scales are first described, as to draw a scale-wise comparison in a second part. For further details, please refer to Appendix A for selective bibliography.

### 3.1. Passive mechanical constitutive laws at lower scales

At the submicron scale, constitutive laws are developed for myofibrils or more specifically titin. Titin is modeled as a linear spring [39–41] or a worm-like-chain model [88]. Myofibrils and collagen fibers are modeled as crimped fibrils in an isotropic matrix [42].

On the scale above, referred to here as microscale, muscle fibers constitutive laws depend on the modeling framework used. In Finite Difference Modeling (FDM), linear springs are used to represent muscle fibers in traction [43–45] and in compression [44,45]. Similarly, using Hill's model, the fiber is represented by 3 elements, including in series contractile and elastic elements, and a parallel elastic element, using exponential and quadratic hyperelastic formulations [34,52]. Using Finite Element Modeling (FEM), Reproducing Kernel Particle Method (RKPM) [37], or analytical frameworks, muscle fibers are usually modeled by separate isotropic and anisotropic contributions. The isotropic behavior accounts for cellular components other than myofibrils and is usually represented by simple hyperelastic laws such as Neo-Hookean [76,50,55,56,47,48,60,87], second order Mooney Rivlin [58], Yeoh model [46,49], or a quadratic polynomial function [37].

The muscle fiber anisotropic behavior is attributed to myofibrils and especially titin proteins. Constitutive laws are expressed as a function of the fiber stretch with a linear [50,55], quasi linear [42], exponential [37,58] or polynomial [46,49,56] shape, which coefficients are identified on muscle fiber uniaxial tension experimental data [4]. The fiber stretch is directly related to the Cauchy-Green tensor's invariant  $I_4$ , thus most models make use implicitly of invariant  $I_4$  to model anisotropy. Using a more phenomenological approach, this invariant is explicitly used by [32,33] following the formulation proposed in [89]. In the same way, [57] use invariant  $I_4$  in combination with invariant  $I_5$ . The use of invariant  $I_5$  is justified by the need to represent shear deformations more accurately [90]. The Criscione invariants [91] have been used to represent shear deformations [36,38,59,92,93], as these invariants have a better physiological interpretability than the classical ones thus leading to more interpretable modeling results. The aforementioned approaches for muscle fibers constitutive modeling are summed up in Fig. 3. Some authors introduce corrective coefficients to take age into account [37,58]. The titin contribution in the fiber can also be found as a homogenized version of a submicron scale model [39–41]. To study rupture in fibers, a model of irreversible deformations and microcracks is proposed in [48].

ECM is represented as a linear elastic material [43–45], an isotropic material [35,46–48,60] or as a collagen fiber reinforced material [32,33,50,55,56,58,76]. Isotropic depictions of ECM include Yeoh [46] and first order Ogden [47,48,60] hyperelastic models. The Hill model [94] has also been extended to separate the muscle fibers and ECM contribution by adding a parallel stiffness to the previous 3D model [35] representing ECM by means of an exponential formulation.

As a fiber reinforced material, the ECM is modeled as an isotropic matrix reinforced with collagen fibers. As the collagen fibers are wavy and present a specific orientation in the tissue, formulations accounting for the waviness and uncrimping of the collagen fibers in soft tissues have been developed [88,95,96]. The isotropic matrix has been modeled considering a Neo-Hookean behavior [76,50,55,56] or a Mooney Rivlin model [58]. Authors systematically use collagen fiber orientations of either  $\pm 55^\circ$  or  $\pm 59^\circ$  relative to the muscle fibers' orientation. Two main families of methods have been described and compared in the literature to model the collagen fibers: the angular integration (AI) approach [97] and the generalized structure tensor (GST) approach [98]. The AI approach considers the mechanical behavior of each collagen fiber and then integrates this behavior over a volume where specific fiber orientation distributions can be defined. On the contrary, the GST approach uses a tensor called generalized structure tensor as to represent a fiber family's global orientation, and the mechanical behavior is defined per fiber family. This topic has been reviewed in [99]. The angular integration approach for skeletal muscles extracellular matrix is presented in [88]. More models use the AI approach [50,55,56,58,59,76] than the GST approach [32,33].

Recent ECM models considering collagen cross-linking in the ECM have been developed [100,101] as this feature directly influences the mechanical properties of ECM [1,18]. Moreover, as costameres connect the interior of the muscle fiber to the ECM, this leads to a phenomenon called lateral force transmission, where the fiber's force is transmitted through shear to the ECM. The ECM network then locally redistributes the loads into the fascicle through endomysium shear [1,102]. Consequently, shear modeling in the ECM has gained increasing interest in multiscale models. The previous approaches do not consider shear contribution of the collagen fibers into the extracellular matrix. Recent models aimed at including shear stress related components in ECM

constitutive laws. [33] developed a specific skeletal muscle extracellular matrix behavior law based on the GST approach that also includes a volumetric contribution to penalize volume changes and a structural contribution to model shear. Similarly, [57] used a passive anisotropic hyperelastic contribution for extracellular matrix that includes the Cauchy-Green tensor's invariants  $I_5$  and  $I_7$ , that was developed to better model shear in arteries [103].

Fat inclusions at the microscale are modeled as an isotropic neo-Hookean material [38,56]. Transmembrane proteins have also been included at the microscale [38] as nonlinear springs. The rupture in ECM, muscle fibers, and tendon fibers [104] can also be implemented as in [45].

Very few authors include fascicles as a realistic boundary material in multiscale models. To the best of our knowledge, no specific constitutive laws have been developed for the fascicles in the context of multiscale modeling. A general approach is the use of a rule of mixtures applied to micro constituent behaviors to determine the parameters of a hyperelastic constitutive law [35,38]. The parameters of a 3D Hill model have been identified by the response of a motor unit [86]. They differ from the fascicles as muscle fibers contained in the same motor unit do not necessarily belong to the same fascicle. The skeletal muscle has been represented with motor units grouped in parallel.

### 3.2. Validation on experimental data at the whole muscle scale

An important step in biomechanical modeling is the validation of numerical models on experimental data. For skeletal muscle multiscale modeling, a few datasets including mainly uniaxial tension and shear tests are used in this way [75,105,106] by comparison to their numerical replication [33,38,46,107], as detailed for the most frequently used experimental studies in the Table 1.

A specific difficulty in validating the models in both shear and compression loadings can be denoted. Implementation of shear loading allows to investigate conditions such as Duchenne Muscular Dystrophy [38,59], cerebral palsy [46,107] and ageing [37,58] that have an impact on the ECM. Compression has been modeled to study deep ulcer injuries in a model of hypoxia including the capillaries [87].

## 4. Constitutive laws for the active behavior

### 4.1. Active mechanical behavior

To get insights on neural stimulation and force generation within the skeletal muscle, an active contribution to the constitutive laws is added. Force generation in the skeletal muscle is attributed to proteins actin and myosin binding in the presence of calcium, namely the cross-bridge theory [110,111]. Experimental evidence also suggests an additional active force generated by formation of a bound between titin and actin during activation [13,22], that would be responsible for the residual force enhancement phenomenon first observed and described in [112]. To account for the bound formed between titin and actin in the presence of calcium, namely titin force enhancement, titin is modeled using the so-called “sticky spring mechanism” [39–41,113] that assumes that a certain region from the titin molecule named PEVK region binds to actin in the presence of calcium. In this model the titin is modeled as a linear spring parallel to the muscle fiber. Its free length gets reduced when titin binds to actin and its orientation changes due to the location of the bound, thus inducing additional efforts both in the fiber direction and in the cross-fiber directions.

Several approaches have been proposed to implement active behavior at the microscale. The active behavior is usually an additional component in the muscle fiber constitutive behavior generating specific stress or pressure along the muscle fiber axis [52]. A value representative of the active stress generated by a single fiber is affected, e.g. the maximal isometric force [32,33,49]. This additional active stress can also be modulated by the product of activation parameters, activation functions, normalized force-length, and force-velocity relationships. Activation can be represented by a single parameter  $\alpha$  which values can range from 0 (non-activated) to 1 (full activation, all actin-myosin bounds are supposedly formed) [48,50,55,60]. Usually, activation functions are used, as to solve numerical issues [44] or to better represent the physiological phenomena leading to activation [39]. Activation functions can exhibit linear [46], trigonometric [44], or exponential [34,58] formulations as a function of time with possible implication of electrical and chemical phenomena. Heidlauf and colleagues [39–41] base their work on the excitation contraction coupling model of Shorten et al., (2007) [114]. Activation can also be spatially dependent, with specific fiber recruitment patterns [49] to mimic neural signals.

Force length relationships describe the experimentally observed relationship between strain along the fiber axis and active stress, as the force generated by sarcomeres depends on their initial elongation at the activation. They exhibit piecewise polynomial [39–41,44,47,48,58,60], trigonometric [46], exponential [34] formulations, or can be found expressed as a Weibull distribution [50,55]. These functions are usually normalized as to modulate the maximal isometric force in the muscle fiber, similarly to activation functions.

Some authors implement a force velocity relationship, which captures the strain rate dependence of the active behavior, thus the viscous effects, by a hyperbolic relation [94,34,50,55].

Titin force enhancement can also be considered at the microscale through an additional stress component [48]. To study the recruitment of motor units in isometric conditions, a model has been proposed based on the Huxley's formulation [86,115].

Considering the whole muscle, three kinds of muscular contractions have to be distinguished. Isometric contractions happen at fixed muscle length; concentric contraction leads the muscle to shorten as it produces force, while in eccentric contractions the muscle elongates due to a greater opposite force. As isometric contractions do not generate changes in the geometry, they are modeled in a different way than concentric and eccentric contractions. Most authors model isometric contractions. This load reproduces voluntary contractions in human patients [86]. Isometric contractions are also modeled to investigate phenomena such as trigger points i.e. a local knot of permanently contracted sarcomeres without any neural stimulation [60], titin force enhancement [39–41], and effect of activation patterns within a muscle fiber bundle [49]. Eccentric contractions are modeled in the context of injuries due to eccentric contractions [44,48]. To numerically implement eccentric contractions, authors perform stepwise uniaxial extensions followed by isometric contractions. Concentric contractions are modeled to reproduce an isovelocity shortening protocol for parameter identification purposes [34]. A case study of both concentric and eccentric contractions has been reported [47].

#### 4.2. Inclusion of electrical, chemical and thermal couplings

Active multiscale mechanical muscle models often include neural signaling, thus implementing other physics such a chemistry or electricity.

Based on an excitation contraction coupling model [114], a first model proposes to describe the ion dynamics of the excitation contraction coupling, such as calcium, chloride, potassium and magnesium, as well as adenosine triphosphate (ATP) dynamics [39–41]. The ions channels carry currents that represent the propagation of the action potential through the muscle fiber, represented by bidomain equations.

Another model of motor unit recruitment representing voluntary and evoked recruitment of motor units has also been developed [86] based on [116]. The action potential generated in each motor unit is then linked to calcium ions release in the myoplasm.

These electrical contributions are linked to chemical contributions representing ion dynamics. Upon release from the sarcoplasmic reticulum, calcium ions bind to molecule troponin, forming cross-bridges, which are responsible for the sarcomere contraction. The concentrations of attached cross-bridges in the different states of the contraction are calculated and normalized by the maximum concentration of possible cross-bridges, which is associated to the maximal force [39–41,83]. Similarly, voluntary motoneuron recruitment and sarcoplasmic reticulum calcium release have been modeled in motor units [86], inducing 3 states in the motor unit, depending on the calcium concentration: activated, in relaxation or relaxed. Chemical coupling has also been used to model oxygen diffusion in muscle capillaries and hypoxia [87].

A thermomechanical model accounting for thermal treatments in trigger points in the skeletal muscle has been developed [60]. Each component (namely muscle fibers and ECM) is described by means of mechanical, thermomechanical, and conductive thermal constitutive contributions. Thermomechanical coupling terms account for the thermal dilatation of the materials. During muscle activation, the cross-bridges undergo endothermal cycles, and are thus considered as a negative heat source.

Multiphysics multiscale models are often implemented to model neural stimulation and action potential propagation within the muscle. Through separation of muscle fibers in motor unit [84], the electrical input is transformed into transmembrane ionic potentials and finally transmitted to the contractile elements through calcium release from the sarcoplasmic reticulum. Other original approaches include the study of hypoxia in fibers, modeling the oxygen diffusion from capillaries and mitochondrial metabolism [87]. A promising



application is the thermomechanical study of muscles, giving insights on thermal therapies for muscles such as cryotherapy [60].

## 5. Conclusions

In the literature, there exist only a few multiphysics multiscale models. Firstly, electrical and chemical couplings require the use of a multiphysics computational framework. Multiscale skeletal muscle models mostly use the Finite Element software ABAQUS® SIMULIA (Dassault Systèmes SE, Vélizy-Villacoublay, France) and the Discrete Element software GranOO [117] even if some opensource alternatives have been developed, such as the library OpenCMISS [84,118–120]. Multiphysics simulations are very demanding in resources and computation time. Consequently, parallel computation and optimization strategies need to be implemented in the multiphysics frameworks [119,120]. These considerations constitute another complexity layer to the development of a multiphysics multiscale muscle model, thus constituting a current limitation in muscle multiscale modeling. Other multiphysics frameworks have been used for multiscale skeletal muscle models implementation such as COMSOL Multiphysics (COMSOL Inc., Stockholm, Sweden) [49] and FeBio (Musculoskeletal Research Laboratories, University of Utah, Salt Lake City, UT, USA) [121].

In an attempt to compare these models, we have analyzed the equivalent shear moduli in small deformations proposed by each of the models for their passive behaviors, whether for ECM or muscle fibers (Fig. 4). We show in green the regions where muscle fibers are stiffer than ECM for passive mechanical properties, and in orange the areas where this trend is reversed. It can be seen that, even if there are wide disparities in values (notably linked to the fact that active behavior or other chemical or thermal properties that are added are capable of modifying these values for a certain number of models), two major trends emerge: models using stiffnesses of the same order of magnitude between ECM and muscle fibers, and models with ECM 3 to 5 times stiffer than fibers in the context of passive behavior alone.

For identification and validation purposes, data from different species and studies is used in the same model. Very few authors have indeed acquired data at different scales on the same samples [3,122,123]. Moreover, passive mechanical tests at several scales are performed *ex vivo*, thus leading to uncertainties due to the samples' conservation and preparation. Furthermore, datasets across the literature are not performed at the same velocities, thus the viscoelastic effect [124,125] may become important when combining several studies for parameter identification [23]. As a result, the literature contains scarce experimental data suited for multiscale modeling. Consequently, a current trend is to acquire the experimental data needed for the identification and the validation of the model parameters [32,33,57,59,126]. The acquired datasets are extracted from *ex vivo* passive experiments. We recommend exploring *in vivo* imaging techniques that provide insight on mechanical parameters within the muscles, such as elastography [127–129]. Model of small animals face an additional experimental challenge due to the size of the animal [130], that leads to scarcer datasets across the literature. Across the current models, the combination of data from different species can be observed, although differences can exist between them in anatomical features [5,131]. Some efforts have been made to compare the anatomy of skeletal muscles across species [131]; however, to our knowledge, mechanical properties have yet to be compared in the same way.

## Appendix A Main multiscale muscle models

The main multiscale skeletal muscle models reviewed here are summarized in Table 2.

## References

1. Lieber, R. L., & Binder-Markey, B. I. (2021). Biochemical and structural basis of the passive mechanical properties of whole skeletal muscle. *Journal of Physiology*, 599(16), 3809–3823. <https://doi.org/10.1113/JP280867>
2. Mukund, K., & Subramaniam, S. (2020). Skeletal muscle: A review of molecular structure and function, in health and disease. *Wiley Interdisciplinary Reviews: Systems Biology and Medicine*, 12(1). <https://doi.org/10.1002/wsbm.1462>
3. Pouletaut, P., Tatarenko, Y., Chakouch, M. K., Li, M., Joumaa, V., Hawse, J. R., Herzog, W., Chatelin, S., & Bensamoun, S. F. (2023). Multiscale Passive Mechanical Characterization of Rodent Skeletal Muscle. *IRBM*, 44(6), 100800. <https://doi.org/10.1016/j.irbm.2023.100800>
4. Tatarenko, Y., Li, M., Pouletaut, P., Kammoun, M., Hawse, J. R., Joumaa, V., Herzog, W., Chatelin, S., & Bensamoun, S. F. (2024). Multiscale analysis of Klf10's impact on the passive mechanical properties of murine skeletal muscle. *Journal of the Mechanical Behavior of Biomedical Materials*, 150, 106298. <https://doi.org/10.1016/j.jmbbm.2023.106298>
5. Roberts, T. J., Eng, C. M., Sleboda, D. A., Holt, N. C., Brainerd, E. L., Stover, K. K., Marsh, R. L., & Azizi, E. (2019). The multi-scale, three-dimensional nature of skeletal muscle contraction. *Physiology*, 34(6), 402–408. <https://doi.org/10.1152/physiol.00023.2019>
6. Csapo, R., Gumpfenberger, M., & Wessner, B. (2020). Skeletal Muscle Extracellular Matrix – What Do We Know About Its Composition, Regulation, and Physiological Roles? A Narrative Review. *Frontiers in Physiology*, 11. <https://doi.org/10.3389/fphys.2020.00253>
7. Purslow, P. P. (2020). The Structure and Role of Intramuscular Connective Tissue in Muscle Function. *Frontiers in Physiology*, 11. <https://doi.org/10.3389/fphys.2020.00495>
8. Humphrey, J. D., Dufresne, E. R., & Schwartz, M. A. (2014). Mechanotransduction and extracellular matrix homeostasis. *Nature Reviews Molecular Cell Biology*, 15(12), 802–812. <https://doi.org/10.1038/nrm3896>
9. Peter, A. K., Cheng, H., Ross, R. S., Knowlton, K. U., & Chen, J. (2011). The costamere bridges sarcomeres to the sarcolemma in striated muscle. *Progress in Pediatric Cardiology*, 31(2), 83–88. <https://doi.org/10.1016/j.ppedcard.2011.02.003>
10. Gautel, M., & Djinović-Carugo, K. (2016). The sarcomeric cytoskeleton: From molecules to motion. *Journal of Experimental Biology*, 219(2), 135–145. <https://doi.org/10.1242/jeb.124941>
11. Doucet, J., Briki, F., Gourrier, A., Pichon, C., Gumez, L., Bensamoun, S., & Sadoc, J.-F. (2011). Modeling the lateral organization of collagen molecules in fibrils using the paracrystal concept. *Journal of Structural Biology*, 173(2), 197–201. <https://doi.org/10.1016/j.jsb.2010.11.018>
12. Purslow, P. P., & Trotter, J. A. (1994). *The morphology and mechanical properties endomysium in series-fibred muscles: Variations with muscle length of* (Journal of Muscle Research and Cell Motility, Vol. 15, pp. 299–308).
13. Herzog, W. (2018). The multiple roles of titin in muscle contraction and force production. *Biophysical Reviews*, 10, 1187–1199.
14. Brynnel, A., Hernandez, Y., Kiss, B., Lindqvist, J., Adler, M., Kolb, J., Van der Pijl, R., Gohlke, J., Strom, J., & Smith, J. (2018). Downsizing the molecular spring of the giant protein titin reveals that skeletal muscle titin determines passive stiffness and drives longitudinal hypertrophy. *Elife*, 7, e40532–e40532.
15. Linke, W. A. (2023). Stretching the story of titin and muscle function. *Journal of Biomechanics*, 111553–111553.
16. Prado, L. G., Makarenko, I., Andresen, C., Krüger, M., Opitz, C. A., & Linke, W. A. (2005). Isoform diversity of giant proteins in relation to passive and active contractile properties of rabbit skeletal muscles. *Journal of General Physiology*, 126(5), 461–480. <https://doi.org/10.1085/jgp.200509364>
17. Gillies, A. R., & Lieber, R. L. (2011). Structure and function of the skeletal muscle extracellular matrix. *Muscle and Nerve*, 44(3), 318–331. <https://doi.org/10.1002/mus.22094>
18. Lieber, R. L., & Meyer, G. (2023). Structure-Function relationships in the skeletal muscle extracellular matrix. *Journal of Biomechanics*, 152. <https://doi.org/10.1016/j.jbiomech.2023.111593>
19. Meyer, G. A., & Lieber, R. L. (2011). Elucidation of extracellular matrix mechanics from muscle fibers and fiber bundles. *Journal of Biomechanics*, 44(4), 771–773. <https://doi.org/10.1016/j.jbiomech.2010.10.044>
20. Sun, B. (2021). The mechanics of fibrillar collagen extracellular matrix. *Cell Reports Physical Science*, 2(8). <https://doi.org/10.1016/j.xcrp.2021.100515>
21. Purslow, P. P. (2010). Muscle fascia and force transmission. *Journal of Bodywork and Movement Therapies*, 14(4), 411–417. <https://doi.org/10.1016/j.jbmt.2010.01.005>
22. Herzog, W. (2017). Skeletal muscle mechanics: Questions, problems and possible solutions Daniel P Ferris. *Journal of NeuroEngineering and Rehabilitation*, 14(1). <https://doi.org/10.1186/s12984-017-0310-6>

23. Binder-Markey, B. I., Sychowski, D., & Lieber, R. L. (2021). *Systematic Review of Skeletal Muscle Passive Mechanics Experimental Methodology*.
24. George, D., Spingarn, C., Dissaux, C., Nierenberger, M., Rahman, R. A., & Rémond, Y. (2017). Examples of multiscale and multiphysics numerical modeling of biological tissues. *Bio-Medical Materials and Engineering*, 28(s1), S15–S27. <https://doi.org/10.3233/BME-171621>
25. Nierenberger, M., George, D., Baumgartner, D., Rémond, Y., Ahzi, S., Wolfram, R., Kahn, J.-L., & Abdel Rahman, R. (2012). Towards Building a Multiscale Mechanical Model for the Prediction of Acute Subdural Hematomas. *ESDA2012*, 261–266. <https://doi.org/10.1115/ESDA2012-82457>
26. Jung, G. S., & Buehler, M. J. (2017). Multiscale modeling of muscular-skeletal systems. *Annual Review of Biomedical Engineering*, 19, 435–457.
27. Dao, T. T., & Tho, M. C. H. B. (2018). A systematic review of continuum modeling of skeletal muscles: Current trends, limitations, and recommendations. *Applied Bionics and Biomechanics*, 2018. <https://doi.org/10.1155/2018/7631818>
28. Wakeling, J. M., Febrer-Nafria, M., & De Groote, F. (2023). A review of the efforts to develop muscle and musculoskeletal models for biomechanics in the last 50 years. *Journal of Biomechanics*, 155. <https://doi.org/10.1016/j.jbiomech.2023.111657>
29. Bensamoun, S. F., Dao, T. T., Charleux, F., & Ho Ba Tho, M.-C. (2013). Estimation of muscle force derived from in vivo MR elastography tests: A preliminary study. *Journal of Musculoskeletal Research*, 16(03), 1350015.
30. Bargmann, S., Klusemann, B., Markmann, J., Schnabel, J. E., Schneider, K., Soyarslan, C., & Wilmers, J. (2018). Generation of 3D representative volume elements for heterogeneous materials: A review. *Progress in Materials Science*, 96, 322–384. <https://doi.org/10.1016/j.pmatsci.2018.02.003>
31. Lauzeral, N., Borzacchiello, D., Kugler, M., George, D., Rémond, Y., Hostettler, A., & Chinesta, F. (2019). Shape parametrization of bio-mechanical finite element models based on medical images. *Computer Methods in Biomechanics and Biomedical Engineering: Imaging & Visualization*, 7(5–6), 480–489. <https://doi.org/10.1080/21681163.2018.1447400>
32. Kuravi, R., Leichsenring, K., Böl, M., & Ehret, A. E. (2021). 3D finite element models from serial section histology of skeletal muscle tissue – The role of micro-architecture on mechanical behaviour. *Journal of the Mechanical Behavior of Biomedical Materials*, 113. <https://doi.org/10.1016/j.jmbbm.2020.104109>
33. Kuravi, R., Leichsenring, K., Trostorf, R., Morales-Orcajo, E., Böl, M., & Ehret, A. E. (2021). Predicting muscle tissue response from calibrated component models and histology-based finite element models. *Journal of the Mechanical Behavior of Biomedical Materials*, 117. <https://doi.org/10.1016/j.jmbbm.2021.104375>
34. Marcucci, L., Reggiani, C., Natali, A. N., & Pavan, P. G. (2017). From single muscle fiber to whole muscle mechanics: A finite element model of a muscle bundle with fast and slow fibers. *Biomechanics and Modeling in Mechanobiology*, 16(6), 1833–1843. <https://doi.org/10.1007/s10237-017-0922-6>
35. Marcucci, L., Bondi, M., Randazzo, G., Reggiani, C., Natali, A. N., & Pavan, P. G. (2019). Fibre and extracellular matrix contributions to passive forces in human skeletal muscles: An experimental based constitutive law for numerical modelling of the passive element in the classical Hill-type three element model. *PLoS ONE*, 14(11). <https://doi.org/10.1371/journal.pone.0224232>
36. Sharafi, B., & Blemker, S. S. (2010). A micromechanical model of skeletal muscle to explore the effects of fiber and fascicle geometry. *Journal of Biomechanics*, 43(16), 3207–3213. <https://doi.org/10.1016/j.jbiomech.2010.07.020>
37. Zhang, Y., Chen, J. S., He, Q., He, X., Basava, R. R., Hodgson, J., Sinha, U., & Sinha, S. (2020). Microstructural analysis of skeletal muscle force generation during aging. *International Journal for Numerical Methods in Biomedical Engineering*, 36(1). <https://doi.org/10.1002/cnm.3295>
38. Virgilio, K. M., Martin, K. S., Peirce, S. M., & Blemker, S. S. (2015). Multiscale models of skeletal muscle reveal the complex effects of muscular dystrophy on tissue mechanics and damage susceptibility. *Interface Focus*, 5(2). <https://doi.org/10.1098/rsfs.2014.0080>
39. Heidlauf, T., Klotz, T., Rode, C., Altan, E., Bleiler, C., Siebert, T., & Röhrle, O. (2016). A multi-scale continuum model of skeletal muscle mechanics predicting force enhancement based on actin–titin interaction. *Biomechanics and Modeling in Mechanobiology*, 15(6), 1423–1437. <https://doi.org/10.1007/s10237-016-0772-7>
40. Heidlauf, T., Klotz, T., Rode, C., Siebert, T., & Röhrle, O. (2017). A continuum-mechanical skeletal muscle model including actin-titin interaction predicts stable contractions on the descending limb of the force-length relation. *PLoS Computational Biology*, 13(10). <https://doi.org/10.1371/journal.pcbi.1005773>
41. Schmid, L., Klotz, T., Siebert, T., & Röhrle, O. (2019). Characterization of Electromechanical Delay Based on a Biophysical Multi-Scale Skeletal Muscle Model. *Frontiers in Physiology*, 10. <https://doi.org/10.3389/fphys.2019.01270>

42. Terzolo, A., Bailly, L., Orgéas, L., Cochereau, T., & Henrich Bernardoni, N. (2022). A micro-mechanical model for the fibrous tissues of vocal folds. *Journal of the Mechanical Behavior of Biomedical Materials*, 128. <https://doi.org/10.1016/j.jmbbm.2022.105118>
43. Roux, A., Laporte, S., Lecompte, J., Gras, L.-L., Roux, A., Laporte, S., Lecompte, J., Gras, L., & Iordanoff, I. (2016). Influence of muscle-tendon complex geometrical parameters on modeling passive stretch behavior with the Discrete Element Method. Influence of muscle-tendon complex geometrical parameters on modeling passive stretch behavior with the Discrete Element Method. *Journal of Biomechanics*, 49(2), 252–258. <https://doi.org/10.1016/j.jbiomech.2015.12.006>
44. Roux, A., Lecompte, J., Iordanoff, I., & Laporte, S. (2021). Modeling of muscular activation of the muscle-tendon complex using discrete element method. *Computer Methods in Biomechanics and Biomedical Engineering*, 24(11), 1184–1194. <https://doi.org/10.1080/10255842.2020.1870039>
45. Roux, A., Haen, T. X., Iordanoff, I., & Laporte, S. (2023). Model of calf muscle tear during a simulated eccentric contraction, comparison between ex-vivo experiments and discrete element model. *Journal of the Mechanical Behavior of Biomedical Materials*, 142. <https://doi.org/10.1016/j.jmbbm.2023.105823>
46. Konno, R. N., Nigam, N., & Wakeling, J. M. (2021). Modelling extracellular matrix and cellular contributions to whole muscle mechanics. *PLoS ONE*, 16(4 April 2021). <https://doi.org/10.1371/journal.pone.0249601>
47. Lamsfuss, J., & Bargmann, S. (2021). Skeletal muscle: Modeling the mechanical behavior by taking the hierarchical microstructure into account. *Journal of the Mechanical Behavior of Biomedical Materials*, 122. <https://doi.org/10.1016/j.jmbbm.2021.104670>
48. Lamsfuss, J., & Bargmann, S. (2022). Computational modeling of damage in the hierarchical microstructure of skeletal muscles. *Journal of the Mechanical Behavior of Biomedical Materials*, 134. <https://doi.org/10.1016/j.jmbbm.2022.105386>
49. Teklemariam, A., Hodson-Tole, E., Reeves, N. D., & Cooper, G. (2019). A micromechanical muscle model for determining the impact of motor unit fiber clustering on force transmission in aging skeletal muscle. *Biomechanics and Modeling in Mechanobiology*, 18(5), 1401–1413. <https://doi.org/10.1007/s10237-019-01152-2>
50. Spyrou, L. A., Agoras, M., & Danas, K. (2017). A homogenization model of the Voigt type for skeletal muscle. *Journal of Theoretical Biology*, 414, 50–61. <https://doi.org/10.1016/j.jtbi.2016.11.018>
51. Jain, A. (2019). Micro and mesomechanics of fibre reinforced composites using mean field homogenization formulations: A review. *Materials Today Communications*, 21. <https://doi.org/10.1016/j.mtcomm.2019.100552>
52. Kammoun, M., Pouletaut, P., Canon, F., Subramaniam, M., Hawse, J. R., Vayssade, M., & Bensamoun, S. F. (2016). Impact of TIEG1 deletion on the passive mechanical properties of fast and slow twitch skeletal muscles in female mice. *PLoS ONE*, 11(10). <https://doi.org/10.1371/journal.pone.0164566>
53. Kammoun, M., Meme, S., Meme, W., Subramaniam, M., Hawse, J. R., Canon, F., & Bensamoun, S. F. (2017). Impact of TIEG1 on the structural properties of fast- and slow-twitch skeletal muscle. *Muscle and Nerve*, 55(3), 410–416. <https://doi.org/10.1002/mus.25252>
54. Honda, H. (1978). Description of cellular patterns by Dirichlet domains: The two-dimensional case. *Journal of Theoretical Biology*, 72(3), 523–543. [https://doi.org/10.1016/0022-5193\(78\)90315-6](https://doi.org/10.1016/0022-5193(78)90315-6)
55. Spyrou, L. A., Brisard, S., & Danas, K. (2019). Multiscale modeling of skeletal muscle tissues based on analytical and numerical homogenization. *Journal of the Mechanical Behavior of Biomedical Materials*, 92, 97–117. <https://doi.org/10.1016/j.jmbbm.2018.12.030>
56. Spyrou, L. A. (2020). A computational multiscale modeling framework for investigating the mechanical properties of meat. *Food Structure*, 26. <https://doi.org/10.1016/j.foostr.2020.100161>
57. Liu, F., Wang, M., & Ma, Y. (2022). Multiscale modeling of skeletal muscle to explore its passive mechanical properties and experiments verification. *Mathematical Biosciences and Engineering*, 19(2), 1251–1279. <https://doi.org/10.3934/mbe.2022058>
58. He, X., Taneja, K., Chen, J. S., Lee, C. H., Hodgson, J., Malis, V., Sinha, U., & Sinha, S. (2022). Multiscale modeling of passive material influences on deformation and force output of skeletal muscles. *International Journal for Numerical Methods in Biomedical Engineering*, 38(4). <https://doi.org/10.1002/cnm.3571>
59. Sahani, R., Hixson, K., & Blemker, S. S. (2024). It's more than the amount that counts: Implications of collagen organization on passive muscle tissue properties revealed with micromechanical models and experiments. *Journal of the Royal Society Interface*, 21(211), 20230478–20230478.
60. Lamsfuss, J., & Bargmann, S. (2023). Mechanisms of thermal treatments in trigger points of the skeletal muscle: Computational microstructural modeling. *European Journal of Mechanics / A Solids*, 99, 104906–104906. <https://doi.org/10.1016/j.simpa>
61. Honda, H. (1978). *Description of Cellular Patterns by Dirichlet Domains: The Two-Dimensional Case?* (J. Theor. Biol., Vol. 12, pp. 523–543).

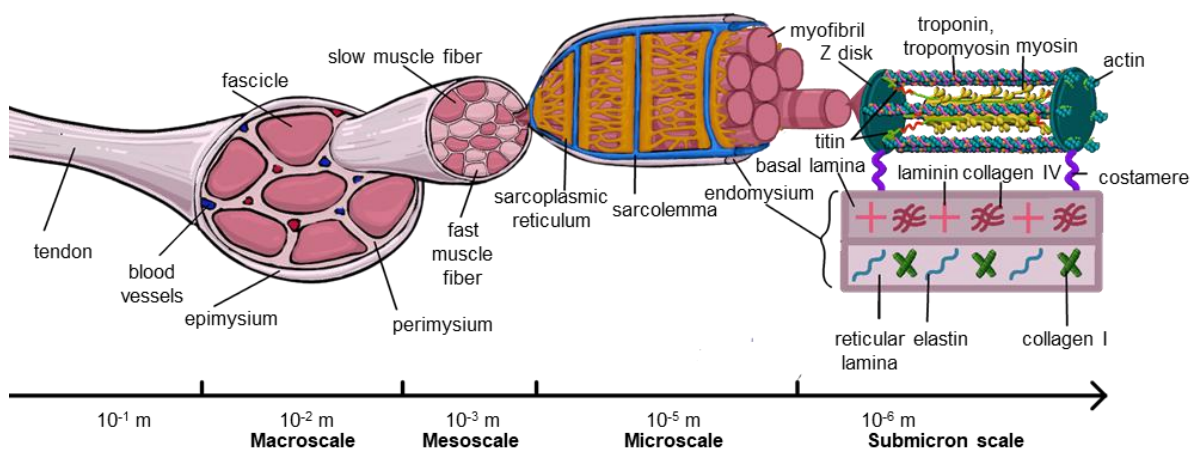
62. Lamsfuss, J., & Bargmann, S. (2022). Python codes to generate skeletal muscle models on each hierarchical level. *Software Impacts*, 14. <https://doi.org/10.1016/j.simpa.2022.100437>
63. Drago, A., & Pindera, M. J. (2007). Micro-macromechanical analysis of heterogeneous materials: Macroscopically homogeneous vs periodic microstructures. *Composites Science and Technology*, 67(6), 1243–1263. <https://doi.org/10.1016/j.compscitech.2006.02.031>
64. Omairey, S. L., Dunning, P. D., & Sriramula, S. (2019). Development of an ABAQUS plugin tool for periodic RVE homogenisation. *Engineering with Computers*, 35(2), 567–577. <https://doi.org/10.1007/s00366-018-0616-4>
65. Riaño, L., & Joliff, Y. (2019). An ABAQUS™ plug-in for the geometry generation of Representative Volume Elements with randomly distributed fibers and interphases. *Composite Structures*, 209, 644–651. <https://doi.org/10.1016/j.compstruct.2018.10.096>
66. Hashin, Z., & Shtrikman, S. (1962). A variational approach to the theory of the elastic behaviour of polycrystals. *Journal of the Mechanics and Physics of Solids*, 10(4), 343–352.
67. Hashin, Z., & Shtrikman, S. (1963). A variational approach to the theory of the elastic behaviour of multiphase materials. *Journal of the Mechanics and Physics of Solids*, 11(2), 127–140.
68. Hill, R. J. (1965). A self-consistent mechanics of composite materials. *Journal of the Mechanics and Physics of Solids*, 13(4), 213–222. [https://doi.org/10.1016/0022-5096\(65\)90010-4](https://doi.org/10.1016/0022-5096(65)90010-4)
69. Reuß, A. (1929). Berechnung der fließgrenze von mischkristallen auf grund der plastizitätsbedingung für einkristalle. *ZAMM- Journal of Applied Mathematics and Mechanics/Zeitschrift Für Angewandte Mathematik Und Mechanik*, 9(1), 49–58.
70. Voigt, W. (1889). Ueber die Beziehung zwischen den beiden Elasticitätsconstanten isotroper Körper. *Annalen Der Physik*, 274(12), 573–587.
71. Raju, K., Tay, T. E., & Tan, V. B. C. (2021). A review of the FE2 method for composites. *Multiscale and Multidisciplinary Modeling, Experiments and Design*, 4(1). <https://doi.org/10.1007/s41939-020-00087-x>
72. Raju, B., Hiremath, S. R., & Roy Mahapatra, D. (2018). A review of micromechanics based models for effective elastic properties of reinforced polymer matrix composites. *Composite Structures*, 204, 607–619. <https://doi.org/10.1016/j.compstruct.2018.07.125>
73. Böhl, M., Iyer, R., Dittmann, J., Garcés-Schröder, M., & Dietzel, A. (2019). Investigating the passive mechanical behaviour of skeletal muscle fibres: Micromechanical experiments and Bayesian hierarchical modelling. *Acta Biomaterialia*, 92, 277–289. <https://doi.org/10.1016/j.actbio.2019.05.015>
74. Kohn, S., Leichsenring, K., Kuravi, R., Ehret, A. E., & Böhl, M. (2021). Direct measurement of the direction-dependent mechanical behaviour of skeletal muscle extracellular matrix. *Acta Biomaterialia*, 122, 249–262. <https://doi.org/10.1016/j.actbio.2020.12.050>
75. Takaza, M., Moerman, K. M., Gindre, J., Lyons, G., & Simms, C. K. (2013). The anisotropic mechanical behaviour of passive skeletal muscle tissue subjected to large tensile strain. *Journal of the Mechanical Behavior of Biomedical Materials*, 17, 209–220. <https://doi.org/10.1016/j.jmbbm.2012.09.001>
76. Bleiler, C., Ponte Castañeda, P., & Röhrle, O. (2019). A microstructurally-based, multi-scale, continuum-mechanical model for the passive behaviour of skeletal muscle tissue. *Journal of the Mechanical Behavior of Biomedical Materials*, 97, 171–186. <https://doi.org/10.1016/j.jmbbm.2019.05.012>
77. Caillerie, D., Mourad, A., & Raoult, A. (2006). Discrete homogenization in graphene sheet modeling. *Journal of Elasticity*, 84(1), 33–68.
78. Rahman, R. A., George, D., Baumgartner, D., Nierenberger, M., Rémond, Y., & Ahzi, S. (2012). An asymptotic method for the prediction of the anisotropic effective elastic properties of the cortical vein: Superior sagittal sinus junction embedded within a homogenized cell element. *Journal of Mechanics of Materials and Structures*, 7(6), 593–611. <https://doi.org/10.2140/jomms.2012.7.593>
79. Lopez-Pamies, O., & Idiart, M. I. (2010). Fiber-reinforced hyperelastic solids: A realizable homogenization constitutive theory. *Journal of Engineering Mathematics*, 68(1), 57–83. <https://doi.org/10.1007/s10665-009-9359-y>
80. López Jiménez, F. (2014). Modeling of soft composites under three-dimensional loading. *Composites Part B: Engineering*, 59, 173–180. <https://doi.org/10.1016/j.compositesb.2013.11.020>
81. Bleiler, C., Castañeda, P. P., & Röhrle, O. (2021). Tangent second-order homogenisation estimates for incompressible hyperelastic composites with fibrous microstructures and anisotropic phases. *Journal of the Mechanics and Physics of Solids*, 147, 104251–104251.
82. Michel, J.-C., Moulinec, H., & Suquet, P. (1999). Effective properties of composite materials with periodic microstructure: A computational approach. *Computer Methods in Applied Mechanics and Engineering*, 172(1–4), 109–143.
83. Röhrle, O., Davidson, J. B., & Pullan, A. J. (2008). Bridging scales: A three-dimensional electromechanical finite element model of skeletal muscle. *SIAM Journal on Scientific Computing*, 30(6), 2882–2904. <https://doi.org/10.1137/070691504>

84. Röhrle, O., Davidson, J. B., & Pullan, A. J. (2012). A physiologically based, multi-scale model of skeletal muscle structure and function. *Frontiers in Physiology*, 3 SEP. <https://doi.org/10.3389/fphys.2012.00358>
85. Affagard, J.-S., Feissel, P., & Bensamoun, S. F. (2015). Identification of hyperelastic properties of passive thigh muscle under compression with an inverse method from a displacement field measurement. *Journal of Biomechanics*, 48(15), 4081–4086. <https://doi.org/10.1016/j.jbiomech.2015.10.007>
86. Carriou, V., Boudaoud, S., Laforet, J., Mendes, A., Canon, F., & Guiraud, D. (2019). Multiscale Hill-type modeling of the mechanical muscle behavior driven by the neural drive in isometric conditions. *Computers in Biology and Medicine*, 115, 103480–103480.
87. Ceelen, K. K., Oomens, C. W. J., & Baaijens, F. P. T. (2008). Microstructural analysis of deformation-induced hypoxic damage in skeletal muscle. *Biomechanics and Modeling in Mechanobiology*, 7(4), 277–284. <https://doi.org/10.1007/s10237-007-0097-7>
88. Gindre, J., Takaza, M., Moerman, K. M., & Simms, C. K. (2013). A structural model of passive skeletal muscle shows two reinforcement processes in resisting deformation. *Journal of the Mechanical Behavior of Biomedical Materials*, 22, 84–94. <https://doi.org/10.1016/j.jmbbm.2013.02.007>
89. Holzapfel, G. A., Gasser, T. C., & Ogden, R. W. (2000). A new constitutive framework for arterial wall mechanics and a comparative study of material models. *Journal of Elasticity and the Physical Science of Solids*, 61, 1–48.
90. Castillo-Méndez, C., & Ortiz, A. (2022). Role of anisotropic invariants in numerically modeling soft biological tissues as transversely isotropic hyperelastic materials: A comparative study. *International Journal of Non-Linear Mechanics*, 138. <https://doi.org/10.1016/j.ijnonlinmec.2021.103833>
91. Criscione, J. C., Douglas, A. S., & Hunter, W. C. (2001). Physically based strain invariant set for materials exhibiting transversely isotropic behavior. *Journal of the Mechanics and Physics of Solids*, 49(4), 871–897.
92. Sharafi, B., & Blemker, S. S. (2011). A mathematical model of force transmission from intrafascicularly terminating muscle fibers. *Journal of Biomechanics*, 44(11), 2031–2039. <https://doi.org/10.1016/j.jbiomech.2011.04.038>
93. Blemker, S. S., & Delp, S. L. (2005). Three-dimensional representation of complex muscle architectures and geometries. *Annals of Biomedical Engineering*, 33(5), 661–673. <https://doi.org/10.1007/s10439-005-1433-7>
94. Hill, A. V. (1938). The heat of shortening and the dynamic constants of muscle. *Proceedings of the Royal Society of London. Series B-Biological Sciences*, 126(843), 136–195.
95. Holzapfel, G. A., & Ogden, R. W. (2015). On the tension-compression switch in soft fibrous solids. *European Journal of Mechanics, A/Solids*, 49, 561–569. <https://doi.org/10.1016/j.euromechsol.2014.09.005>
96. Holzapfel, G. A., & Ogden, R. W. (2017). On Fiber Dispersion Models: Exclusion of Compressed Fibers and Spurious Model Comparisons. *Journal of Elasticity*, 129(1–2), 49–68. <https://doi.org/10.1007/s10659-016-9605-2>
97. Lanir, Y. (1983). Constitutive equations for fibrous connective tissues. *Journal of Biomechanics*, 16(1), 1–12.
98. Gasser, T. C., Ogden, R. W., & Holzapfel, G. A. (2006). Hyperelastic modelling of arterial layers with distributed collagen fibre orientations. *Journal of the Royal Society Interface*, 3(6), 15–35. <https://doi.org/10.1098/rsif.2005.0073>
99. Holzapfel, G. A., Ogden, R. W., & Sherifova, S. (2019). On fibre dispersion modelling of soft biological tissues: A review. *Proceedings of the Royal Society A: Mathematical, Physical and Engineering Sciences*, 475(2224). <https://doi.org/10.1098/rspa.2018.0736>
100. Holzapfel, G. A., & Ogden, R. W. (2020). An arterial constitutive model accounting for collagen content and cross-linking. *Journal of the Mechanics and Physics of Solids*, 136. <https://doi.org/10.1016/j.jmps.2019.103682>
101. Tian, L., Wang, Z., Liu, Y., Eickhoff, J. C., Eliceiri, K. W., & Chesler, N. C. (2016). Validation of an arterial constitutive model accounting for collagen content and crosslinking. *Acta Biomaterialia*, 31, 276–287. <https://doi.org/10.1016/j.actbio.2015.11.058>
102. Purslow, P. P. (2002). *The structure and functional significance of variations in the connective tissue within muscle* (Comparative Biochemistry and Physiology Part A, Vol. 133, pp. 947–966).
103. Wang, M. N., & Liu, F. J. (2020). A compressible anisotropic hyperelastic model with I 5 and I 7 strain invariants. *Computer Methods in Biomechanics and Biomedical Engineering*, 1–10. <https://doi.org/10.1080/10255842.2020.1795839>
104. Bensamoun, S. F., Tsubone, T., Subramaniam, M., Hawse, J. R., Boumediene, E., Spelsberg, T. C., An, K.-N., & Amadio, P. C. (2006). Age-dependent changes in the mechanical properties of tail tendons in TGF- $\beta$  inducible early gene-1 knockout mice. *Journal of Applied Physiology*, 101(5), 1419–1424.

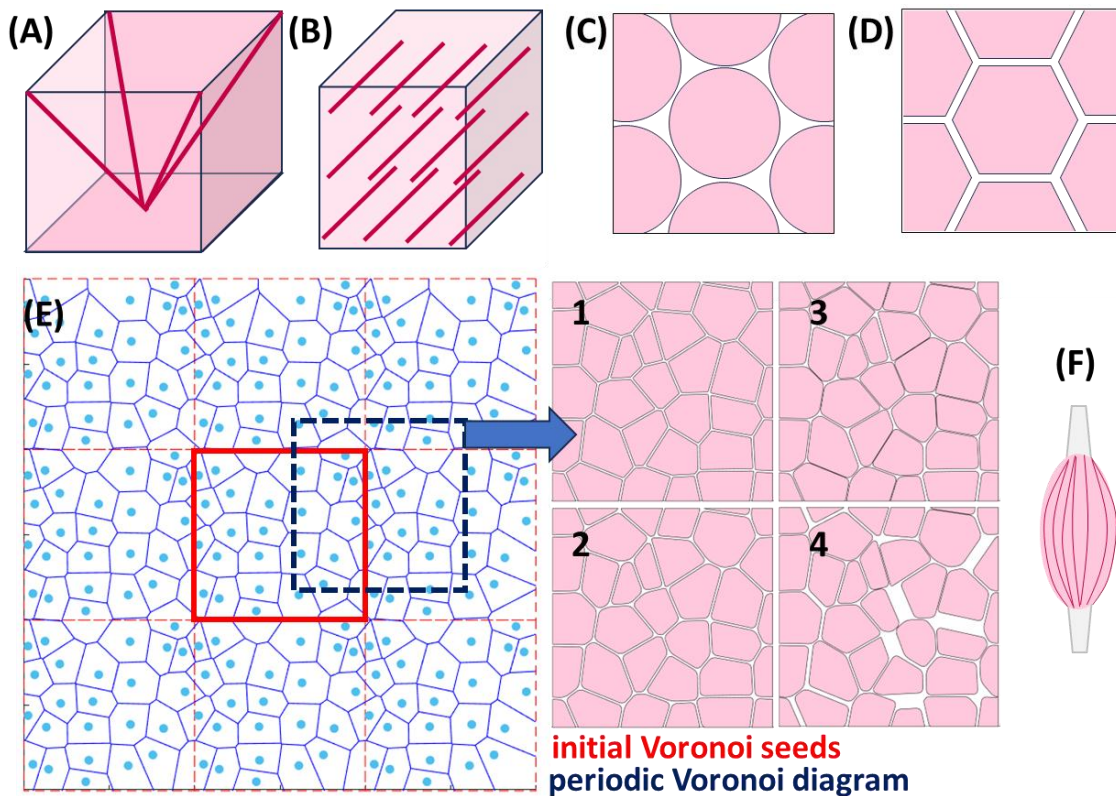
105. Calvo, B., Ramírez, A., Alonso, A., Grasa, J., Soteras, F., Osta, R., & Muñoz, M. J. (2010). Passive nonlinear elastic behaviour of skeletal muscle: Experimental results and model formulation. *Journal of Biomechanics*, 43(2), 318–325. <https://doi.org/10.1016/j.jbiomech.2009.08.032>
106. Morrow, D. A., Haut Donahue, T. L., Odegard, G. M., & Kaufman, K. R. (2010). Transversely isotropic tensile material properties of skeletal muscle tissue. *Journal of the Mechanical Behavior of Biomedical Materials*, 3(1), 124–129. <https://doi.org/10.1016/j.jmbbm.2009.03.004>
107. Konno, R. N., Nigam, N., Wakeling, J. M., & Ross, S. A. (2022). The contributions of extracellular matrix and sarcomere properties to passive muscle stiffness in cerebral palsy. *Frontiers in Physiology*, 12, 804188.
108. Hawkins, D., & Bey, M. (1994). A Comprehensive Approach for Studying Muscle-Tendon Mechanics. *Journal of Biomechanical Engineering*, 116(1), 51–55. <https://doi.org/10.1115/1.2895704>
109. Mohammadkhan, M., Murphy, P., & Simms, C. K. (2016). The in vitro passive elastic response of chicken pectoralis muscle to applied tensile and compressive deformation. *Journal of the Mechanical Behavior of Biomedical Materials*, 62, 468–480.
110. Huxley, H. E. (1969). The Mechanism of Muscular Contraction: Recent structural studies suggest a revealing model for cross-bridge action at variable filament spacing. *Science*, 164(3886), 1356–1366.
111. Kammoun, M., Pouletaut, P., Morandat, S., Subramaniam, M., Hawse, J. R., & Bensamoun, S. F. (2021). Krüppel- like factor 10 regulates the contractile properties of skeletal muscle fibers in mice. *Muscle & Nerve*, 64(6), 765–769.
112. Abbott, B. C., & Aubert, X. M. (1952). The force exerted by active striated muscle during and after change of length. *The Journal of Physiology*, 117(1), 77–77.
113. Rode, C., Siebert, T., & Blickhan, R. (2009). Titin-induced force enhancement and force depression: A ‘sticky-spring’ mechanism in muscle contractions? *Journal of Theoretical Biology*, 259(2), 350–360.
114. Shorten, P. R., O’Callaghan, P., Davidson, J. B., & Soboleva, T. K. (2007). A mathematical model of fatigue in skeletal muscle force contraction. *Journal of Muscle Research and Cell Motility*, 28(6), 293–313. <https://doi.org/10.1007/s10974-007-9125-6>
115. Huxley, A. F. (1957). Muscle structure and theories of contraction. *Progress in Biophysics and Biophysical Chemistry*, 7, 255–318.
116. Fuglevand, A. J., Winter, D. A., & Patla, A. E. (1993). Models of recruitment and rate coding organization in motor-unit pools. *Journal of Neurophysiology*, 70(6), 2470–2488. <https://doi.org/10.1152/jn.1993.70.6.2470>
117. Charles, J.-L., André, D., & Iordanoff, I. (2013). *GranOO: plateforme de simulation DEM en dynamique explicite*. 11e colloque national en calcul des structures.
118. Bradley, C., Bowery, A., Britten, R., Budelmann, V., Camara, O., Christie, R., Cookson, A., Frangi, A. F., Gamage, T. B., Heidlauf, T., Krittian, S., Ladd, D., Little, C., Mithraratne, K., Nash, M., Nickerson, D., Nielsen, P., Nordbø, Ø., Omholt, S., ... Hunter, P. (2011). OpenCMISS: A multi-physics & multi-scale computational infrastructure for the VPH/Physiome project. *Progress in Biophysics and Molecular Biology*, 107(1), 32–47. <https://doi.org/10.1016/j.pbiomolbio.2011.06.015>
119. Bradley, C. P., Emamy, N., Ertl, T., Göddeke, D., Hessenthaler, A., Klotz, T., Krämer, A., Krone, M., Maier, B., Mehl, M., Rau, T., & Röhrle, O. (2018). Enabling detailed, biophysics-based skeletal muscle models on HPC systems. *Frontiers in Physiology*, 9(JUL). <https://doi.org/10.3389/fphys.2018.00816>
120. Heidlauf, T., & Röhrle, O. (2013). Modeling the chemoelectromechanical behavior of skeletal muscle using the parallel open-source software library openCMISS. *Computational and Mathematical Methods in Medicine*, 2013. <https://doi.org/10.1155/2013/517287>
121. Maas, S. A., Ellis, B. J., Ateshian, G. A., & Weiss, J. A. (2012). FEBio: Finite Elements for Biomechanics. *Journal of Biomechanical Engineering*, 134(011005). <https://doi.org/10.1115/1.4005694>
122. Bensamoun, S., Stevens, L., Fleury, M. J., Bellon, G., Goubel, F., & Tho, M. C. H. B. (2006). Macroscopic–microscopic characterization of the passive mechanical properties in rat soleus muscle. *Journal of Biomechanics*, 39(3), 568–578.
123. Ward, S. R., Winters, T. M., O’Connor, S. M., & Lieber, R. L. (2020). Non-linear Scaling of Passive Mechanical Properties in Fibers, Bundles, Fascicles and Whole Rabbit Muscles. *Frontiers in Physiology*, 11. <https://doi.org/10.3389/fphys.2020.00211>
124. Debernard, L., Leclerc, G. E., Robert, L., Charleux, F., & Bensamoun, S. F. (2013). In vivo characterization of the muscle viscoelasticity in passive and active conditions using multifrequency MR elastography. *Journal of Musculoskeletal Research*, 16(02), 1350008.
125. Chakouch, M. K., Pouletaut, P., Charleux, F., & Bensamoun, S. F. (2016). Viscoelastic shear properties of in vivo thigh muscles measured by MR elastography. *Journal of Magnetic Resonance Imaging*, 43(6), 1423–1433.



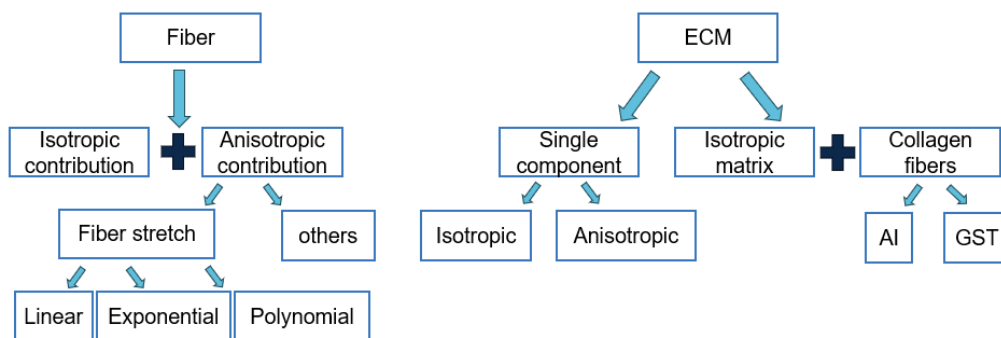
126. Sahani, R., Wallace, C. H., Jones, B. K., & Blemker, S. S. (2022). Diaphragm muscle fibrosis involves changes in collagen organization with mechanical implications in Duchenne muscular dystrophy. *Journal of Applied Physiology*, *132*(3), 653–672.
127. Affagard, J.-S., Bensamoun, S. F., & Feissel, P. (2014). Development of an Inverse Approach for the Characterization of In Vivo Mechanical Properties of the Lower Limb Muscles. *Journal of Biomechanical Engineering*, *136*(111012). <https://doi.org/10.1115/1.4028490>
128. Bensamoun, S. F., Charleux, F., Debernard, L., Themar-Noel, C., & Voit, T. (2015). Elastic properties of skeletal muscle and subcutaneous tissues in Duchenne muscular dystrophy by magnetic resonance elastography (MRE): A feasibility study. *IRBM*, *36*(1), 4–9. <https://doi.org/10.1016/j.irbm.2014.11.002>
129. Debernard, L., Robert, L., Charleux, F., & Bensamoun, S. F. (2011). Analysis of thigh muscle stiffness from childhood to adulthood using magnetic resonance elastography (MRE) technique. *Clinical Biomechanics*, *26*(8), 836–840. <https://doi.org/10.1016/j.clinbiomech.2011.04.004>
130. Tatarenko, Y., Pouletaut, P., Chatelin, S., & Bensamoun, S. F. (2022). Passive and active mechanical tests at different scales of the skeletal muscle: A literature review. *State of the Art in Bioengineering*, *2*(1).
131. Sleboda, D. A., Stover, K. K., & Roberts, T. J. (2020). Diversity of extracellular matrix morphology in vertebrate skeletal muscle. *Journal of Morphology*, *281*(2), 160–169. <https://doi.org/10.1002/jmor.21088>



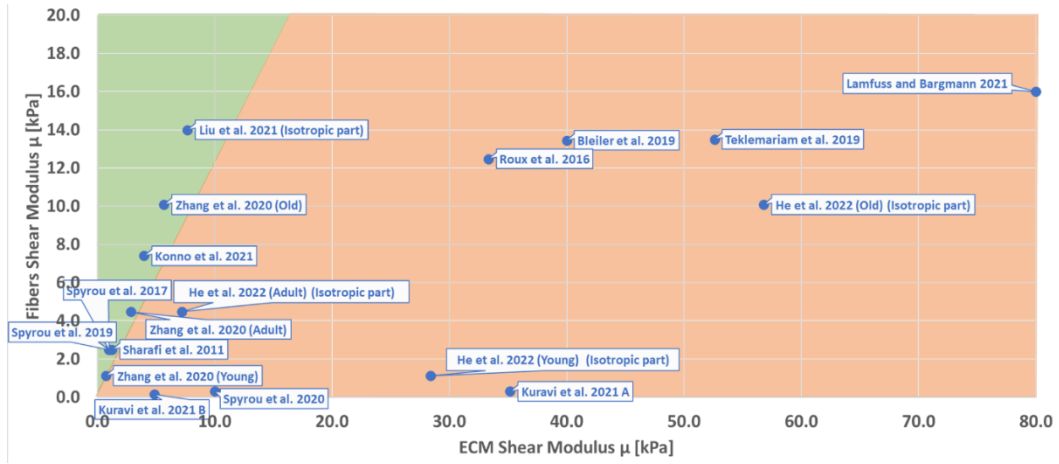
**Fig.1** Schematic representation of the multiscale architecture of the striated skeletal muscle [descriptive caption: a scheme representing the muscle and epimysium at the macroscale. The muscle constitutes of fascicles, blood vessels and perimysium. At the mesoscale, a fascicle is represented. It is surrounded by perimysium and it contains fast and slow fibers, as well as endomysium. At the microscale, a fiber constituted of myofibrils surrounded by the sarcoplasmic reticulum, the sarcolemma, and endomysium is shown. At the submicron scale a sarcomere from the myofibril, its link to the endomysium, and the endomysium are shown. More specifically, several proteins actin, titin, myosin, troponin, tropomyosin, costameres, laminin, collagen IV, elastin and collagen I are represented.]



**Fig. 2** Idealized geometries to represent skeletal muscle: (A) myofibrils represented as trusses in a 3D geometry, (B) parallel 1D fibers embedded in a 3D muscle geometry (C) regular circular arrangement, (D) regular hexagonal arrangement, (E) periodic Voronoi diagram with constant ECM width (1), rounded up diagram (2) and variable ECM width (3 and 4), (F) fusiform muscle geometry [descriptive caption: this figure shows different simplified geometries used to describe the skeletal muscle in 2D and in 3D]



**Fig. 3** Main approaches to represent fibers and ECM behaviors at the microscale, AI: angular integration, GST: generalized structure tensor [descriptive caption: this figure shows a diagram summarizing the different modeling approaches at the microscale. On the first level the distinction is made between muscle fibers and extracellular matrix. On the second level the distinction is made between isotropic and anisotropic contribution for the fibers, whereas the ECM modeling can be distinguished in a single component model, or isotropic matrix plus collagen fibers model. More ramifications give additional precisions.]



**Fig. 4** Comparison of equivalent shear moduli in small deformations for ECM and muscle fibers in a large number of multiscale models proposed in the literature. The boundary between stiffer fibers (green area) and stiffer ECM (orange area) is illustrated [descriptive caption: this graphic shows scattered points, each representing a different numerical study. The axes are the ECM shear modulus in kPa as the x-axis, and the muscle fiber shear modulus in kPa as the y-axis]

**Table 1** Main experimental studies used to identify the behavioral laws of multiscale numerical models of skeletal muscle (N.I.: no information) [descriptive caption: this table presents characteristics about experimental datasets published in the literature. It includes 5 entries for each dataset, which are the reference of the study, the considered solicitation, the tested species, the tested muscles, and the strain rate used for the experiment]

Reference	Solicitation	Species	Muscle	Strain rate
Hawkins and Bey 1994 [108]	Active and passive response to uniaxial tensile test in the muscle fiber direction	Rat	Tibialis anterior	N.I.
Morrow <i>et al.</i> , 2010 [106]	Longitudinal extension, transverse extension and longitudinal shear test	Rabbit	Extensor digitorum longus	$0.5 \text{ e}^{-3} \text{ s}^{-1}$
Calvo <i>et al.</i> , 2010 [105]	<i>In vitro</i> and <i>in vivo</i> uniaxial tensile tests	Rat	Tibialis anterior	$0.33 \text{ e}^{-3} \text{ s}^{-1}$
Meyer and Lieber 2011 [19]	Tensile tests on individual fiber, fiber composite and bundle composite	Mouse	5 <sup>th</sup> toe of extensor digitorum longus	$20 \text{ s}^{-1}$
Takaza <i>et al.</i> , 2013 [75]	Tensile tests at 0°, 30°, 45°, 60° and 90° to the muscle fiber direction	Pig	Longissimus dorsi	$0.5 \text{ e}^{-3} \text{ s}^{-1}$
Mohammadkhah <i>et al.</i> , 2016 [109]	Tensile and compression tests at 0°, 45° and 90° to the muscle fiber direction	Chicken	Pectoralis	$0.5 \text{ e}^{-2} \text{ s}^{-1}$

**Table 2** Appendix A: Main multiscale models [descriptive caption: this table presents characteristics about multiscale models published in the literature in chronological order. It includes 11 entries for each model, which are (1) the reference of the model, (2) a short description of the model, (3) indications about the isotropic part of the model concerning the extracellular matrix, (4) indications about the anisotropic part of the model concerning the extracellular matrix, (5) indications about the isotropic part of the model concerning the muscle fiber, (6) indications about the anisotropic part of the model concerning the muscle fiber, (7) the modeled constituents, (8) the scale transition method, (9) the reference for the experimental datasets used for identification of the model, (10) the FE solver used, and (11) the reference for the experimental datasets used for validation of the model]

Studies	Description	ECM Law & Parameters		Fibers Law & Parameters		Components	Scale transition	Identification	FE solver	Validation
		Isotropic part	Anisotropic part	Isotropic part	Anisotropic part					
<b>Ceelen et al. 2008</b> [87]	chemomechanical model of hypoxia in muscles due to muscle compression	Neo-Hookean		Neo-Hookean		ECM, Fibers, Capillaries	Averaged results	Bosboom et al. (2001), Labbe et al. (1987)		
<b>Röhrle et al. 2008, 2012</b> [83,84]		Passive Mooney-Rivlin (1rst order)			Passive & active normalized force length relationships	Fibers, ground matrix, sarcomeres	Concurrent numerical homogenization	Shorten et al. (2007)	Open CMISS	
<b>Sharafi &amp; Blemker 2010</b> [36]	3-scale model to study variations of the microstructure		Model of Blemker et al. (2005)		Model of Blemker et al. (2005)	Fibers, ECM, fascicles	Periodic homogenization			
<b>Sharafi et al. 2011</b> [92]	Study of force transmission in a realistic fascicle geometry		Model of Blemker et al. (2005)		Model of Blemker et al. (2005)	Fibers, ECM	Periodic homogenization	parameters taken from the literature	Matlab, NIKE3D	
<b>Gindre et al. 2013</b> [88]	tension compression model		Force generated by wavy collagen helices		Wormlike chain model of titin	ECM, Fiber, Titin, Collagen	Homogenization: Voigt / mixture law	parameters taken from the literature	Matlab	Takaza et al. (2013), Calvo et al. (2010), Morrow et al. (2010), Nie et al. (2011), Yamada (1970), Martins et al. (1998), Van Loocke et al. (2006), Grieve and Armstrong (1988), Vannah and Childress (1993), Zheng et al. (1999)
<b>Heidlauf et al. 2013</b> [120]		Passive Mooney-Rivlin (1rst order)		Passive Mooney-Rivlin (1rst order)	Passive part model of Markert et al. () + active part model	ECM, Fast & slow fibers, Sarcomeres	Concurrent numerical homogenization	Shorten et al. (2007)	Open CMISS	

					of Röhrle et al. (2012)					
<b>Virgilio et al. 2015</b> [38]	Study of Duchenne Muscular Dystrophy with AI generated geometry		Model of Blemker et al. (2005)		Model of Blemker et al. (2005)	Fibers, ECM, fat, dystrophin	Averaged results		NIKE3D	
<b>Roux et al. 2016</b> [43]	Discrete Element Method	Hookean accounting for collagen toe region		Hookean		ECM, Collagen Fibers, Tendons, Epimysium	Identification	Matscheke et al. 2013 Regev et al. 2011	GranOO	
<b>Heidlauf et al. 2016, 2017, Schmid et al. 2019</b> [39–41]	Model based on sliding-filament & cross-bridge theory	Passive Mooney-Rivlin (1rst order)		Passive Mooney-Rivlin (1rst order)	Model of Heidlauf et al. (2016) + active contribution of actin-titin interaction	ECM, Fast & slow fibers, Sarcomeres Titin	Concurrent numerical homogenization	Shorten et al. (2007)	Open CMISS	
<b>Spyrou et al. 2017</b> [50]	Homogenized muscle model	Neo-Hookean	Gindre et al. (2013)	Neo-Hookean	Active part: normalized weibull distribution (Ehret 2011) and hyperbolic function Böhl et al. (2008), Van Leeuwen et al. (1997) Passive part: linear fonction Blemker et al. (2005)	Fibers, ECM	Analytical homogenization + numerical periodic homogenization	Hawkins 1 Bey 1994, Van Loocke et al. 2006, Böhl & Reese 2008, Thacker et al. 2012, Holzapfel et al. 2005, Purslow & Trotter 1994, Lieber et al. 2003	ABAQUS	Hawkins & Bey 1994
<b>Marcucci et al. 2017</b> [34]	Passive 3D FE model based on Hill model				Hill model, using quadratic and exponential formulations for the elements	Fibers	Averaged results	Botinelli et al. 1996, He et al. 2000	ABAQUS	
<b>Marcucci et al. 2019</b> [35]	Passive 3D Hill model with separate contributions of muscle fibers and ECM	Isotropic element in parallel to the Hill model, with exponential behavior			Hill model, using quadratic and exponential formulations for the elements	Fibers, ECM	Averaged results	Own experiments	ABAQUS	

<b>Bleiler et al. 2019</b> [76]	Description of the passive behaviour of skeletal muscle tissue	Neo-Hookean	Lanir et al. 1983	Neo-Hookean	-	Fibers, ECM	Voigt-type homogenization	Holzappel et Weizsäcker 1998, Holzappel et al. 2005, Purslow & Trotter 1994, Light & Champion 1984, Light et al. 1985, Mohammadkhah et al. 2018	Open CMISS	Hawkins & Bey 1994, Morrow et al. 2010, Calvo et al. 2010, Takaza et al. 2013
<b>Spyrou et al. 2019</b> [55]	Active skeletal muscle model	Neo-Hookean	Gindre et al. 2013	Neo-Hookean	Active part: normalized weibull distribution (Ehret 2011) and hyperbolic function Böhl et al. (2008), Van Leeuwen et al. (1997) Passive part: linear fonction Blemker et al. (2005)	Fibers, ECM	Analytical homogenization + numerical periodic homogenization	Hawkins & Bey 1994	ABAQUS	Morrow et al. 2010, Hawkins & Bey 1994
<b>Teklemariam et al. 2019</b> [49]	model of motor unit remodeling with age	Mooney-Rivlin (2nd order)		Yeoh model	Second order polynomial (passive) + active stress in fiber direction	Fibers, ECM, tendon	Averaged results	Bosboom et al. 2001; Chi et al. 2010; Prado et al. 2005	Comsol Multiphysics	
<b>Carriu et al. 2019</b> [86]	Hill-inspired model detailing the electromechanical behavior of the muscle based on the Huxley formulation					Motor Unit contractile elements repeated in parallel to constitute the muscle, including calcium dynamics for activation	Averaged results	Benoussaad et al. 2013		Benoussaad et al. 2013

<b>Spyrou et al. 2020</b> [56]	Muscle fibers, intramuscular connective tissue (IMCT), intramuscular fat (IMF)	Neo-Hookean IMCT	Lanir et al. 1983, Gasser et al. 2006	Neo-Hookean	standard reinforcement model Lopez-Pamies et al. 2010	Fibers, ECM, fat	Numerical periodic homogenization	Böl et al. 2019, van der Rijt et al. 2006, Holzapfel et al. 2005, Purslow 1989, Purslow & Trotter 1994, Gefen et al. Dilmoney 2007	ABAQUS	Morrow et al. 2010
<b>Zhang et al. 2020</b> [37]	Young, Adult & Old models	cubic polynomial hyperelastic model		Mooney-Rivlin (2nd order)	Model of Blemker et al. 2005	Fibers, ECM	Averaged results			Hawkins & Bey 1994, Morrow et al. 2010 Calvo et al. 2010
<b>Roux et al. 2021</b> [44]	Discrete element model of active muscle	Hookean		Hookean + force length relationship as parabolic curve (Winter et al. 2010, Mohammed et al. 2016)		Fibers, ECM, tendon	Averaged results	Matscheke et al. 2013 Regev et al. 2011 Winters & Stark 1988 Gordon et al. 1966 Winters et al. 2011	GranOO	
<b>Lamfuss &amp; Bargmann 2021</b> [47]	Fascicle modeling, effect of pennation angle	Ogden (1st order)		Passive part: Neo Hookean	Active part: Heidlauf & Röhrle 2013	Fibers, ECM	Numerical homogenization	Haug et al. 2018, Kammoun et al. 2019, Schneiderei et al. 2018		Meyer & Lieber 2011
<b>Liu et al. 2022</b> [57]	Model to study shear loading	Neo-Hookean	Type I collagen model with exponential + polynomial formulations	Neo-Hookean	Exponential + polynomial formulations	Fibers, ECM	Numerical periodic homogenization	Smith et al. 2011, Böl et al. 2019, Kohn et al. 2021, own experiments	ABAQUS	Morrow et al. 2010, own experiments
<b>Konno et al. 2021</b> [46]	Model to study cerebral palsy	Yeoh model	Simo et al. 1992	Yeoh model	Simo et al. 1992 + polynomial passive part + trigonometric active part	ECM, Fibers (Active & passive)	Voigt-type homogenization	Gillies et al. 2011, Winters et al. 2011, Mohammadkhah et al. 2016	Deal II	Takaza et al. 2013, Mohammadkhah et al. 2016
<b>Kuravi et al. 2021 a</b> [32]	Constitutive model of the extracellular matrix		Rubin & Bodner 2002, Holzapfel et al. 2015		Exponential Holzapfel et al. 2000	ECM, Fibers, Collagen	Numerical periodic homogenization	Böl et al. 2019	ABAQUS	Van Loocke et al. 2006, Böl et al. 2012, Böl et al. 2019



<b>Kuravi et al. 2021 b</b> [33]	Constitutive model of the extracellular matrix		Rubin & Bodner2002, Holzapfel et al. 2015 + contributions for shear modeling	Neo-Hookean	Exponential Holzapfel 2000	ECM, Fibers, Collagen	Numerical periodic homogenization	Böl et al. 2019, Kohn et al. 2021	ABAQUS	Own experiments
<b>He et al. 2022</b> [58]	Young, Adult & Old models	Mooney-Rivlin (3 <sup>rd</sup> order)	Lanir et al. 1983, Bleiler et al. 2019, Spyrou et al. 2019, exponential formulation for collagen helices	Mooney-Rivlin (2nd order)	Exponential passive part + Polynomial active part	ECM, Fibers, Tendons, aponeurosis	Numerical periodic homogenization	Spyrou et al. 2019 Zhang et al. 2020	ABAQUS	Calvo et al. 2010
<b>Terzolo et al. 2022</b> [42]	Model of human vocal folds	Neo-hookean	Orgeas et al. 1998	Neo-hookean	Orgeas et al. 1998 + repulsive interactions between myofibrils	Fibers, ECM, myofibrils, collagen	Caillerie et al. 2006	Cochereau et al. 2020		
<b>Lamfuss et al. 2022</b> [48]	Model of damage initiation & rupture of activated muscle fibers resulting from eccentric contractions formation of microcracks	Endomysium Ogden (1st order)		Passive part: Neo Hookean	Active part: Heidlauf & Röhrle 2013 + titin force enhancement (Cankaya et al. 2021) + anisotropic damage model	Fibers, ECM	Numerical homogenization	Haug et al. 2018, Meyer et Lieber 2011; Meyer et al. 2011, Schneidereit et al. 2018, Cankaya et al. 2021		
<b>Lamfuss et al. 2023</b> [60]	Model of thermal treatments	Ogden (1st order) Thermomechanical & thermal energies		Neo Hookean with thermomechanical & thermal parts	Force length relationship (zuurbier 1995) Thermomechanical & thermal energies, endothermal contribution due to cross-bridge cycling	Fibers, ECM	Numerical homogenization	Erdman & Gos 1990, Okamoto & Saeki 1964, Werner & Buse 1988, Briesse 1998, Mcintosh & Anerson 2010, Mutungi & Ranatunga 1998, Segal et al. 1986, Ranatunga 1994, Bershitsky & Tsaturyan 1989, Ried et al. 1999		

Sahani et al. 2024 [59]	Model of Duchenne Muscular Dystrophy in mice	of -	Angular Integration model of Ateshian et al. 2009, power law based on ellipsoidal collagen fiber distribution	Model of Blemker et al. 2005	Model of Blemker et al. 2005	ECM (endomysium, epimysium), Fibers	Periodic homogenization then Voigt homogenization to include epimysium	Sahani et al. 2022, Wohlgemuth et al. 2023, Morrow et al. 2010, Zajac et al. 1989, own experiments	FeBio	own experiments
-------------------------	--	------	---	------------------------------	------------------------------	-------------------------------------	--	--	-------	-----------------