

OHMI NUNAVIK – CCC and surface water in Umiujaq: a viral issue

1. Location



BIP Session: case studies

OHMI NUNAVIK – CCC and surface water in Umiujaq: a viral issue

1. Location



Subarctic environment



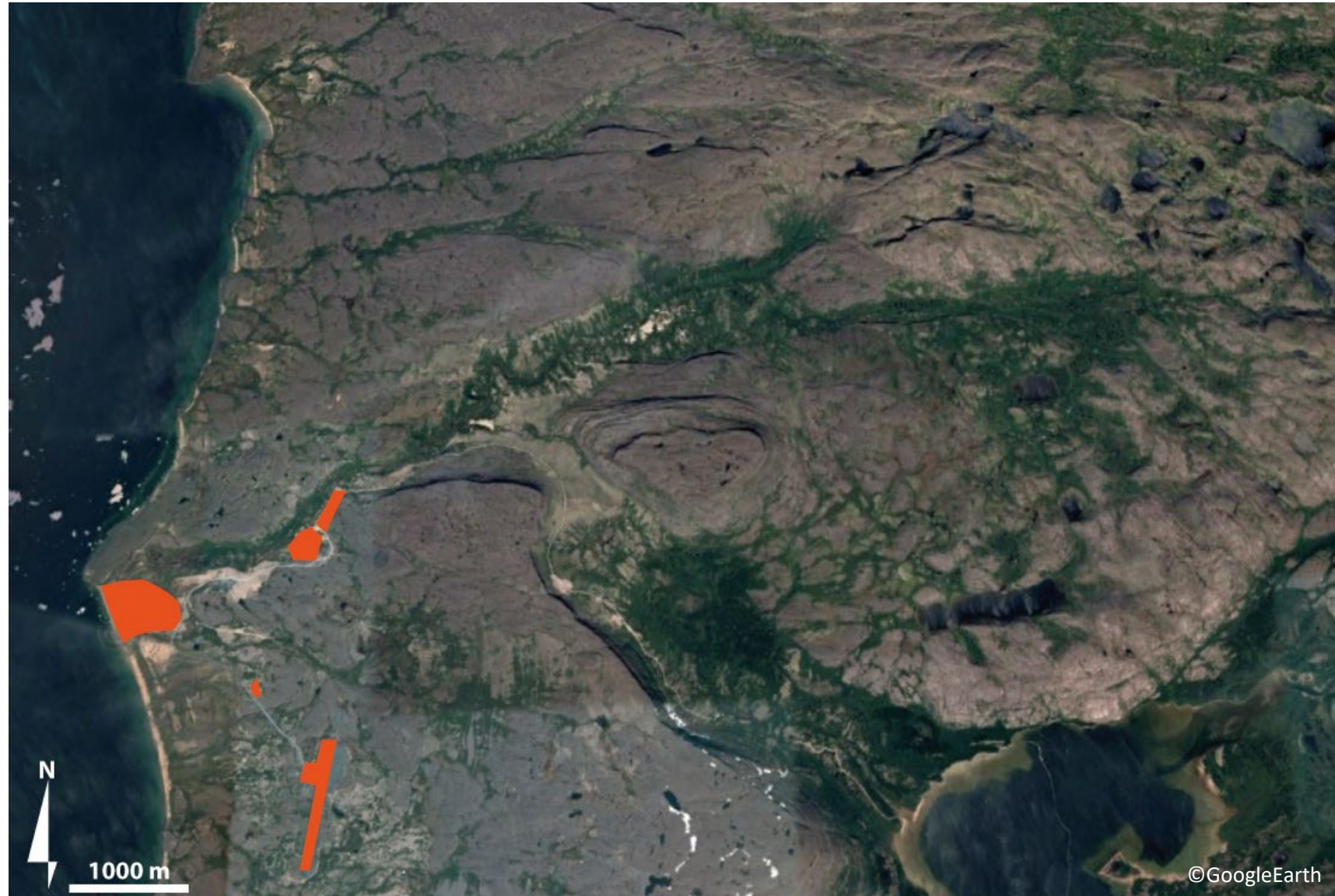
BIP Session: case studies

OHMI NUNAVIK – CCC and surface water in Umiujaq: a viral issue

1. Location



Subarctic environment
Local high population density



BIP Session: case studies

OHMI NUNAVIK – CCC and surface water in Umiujaq: a viral issue

1. Location



Subarctic environment
Local high population density
Few ground connections



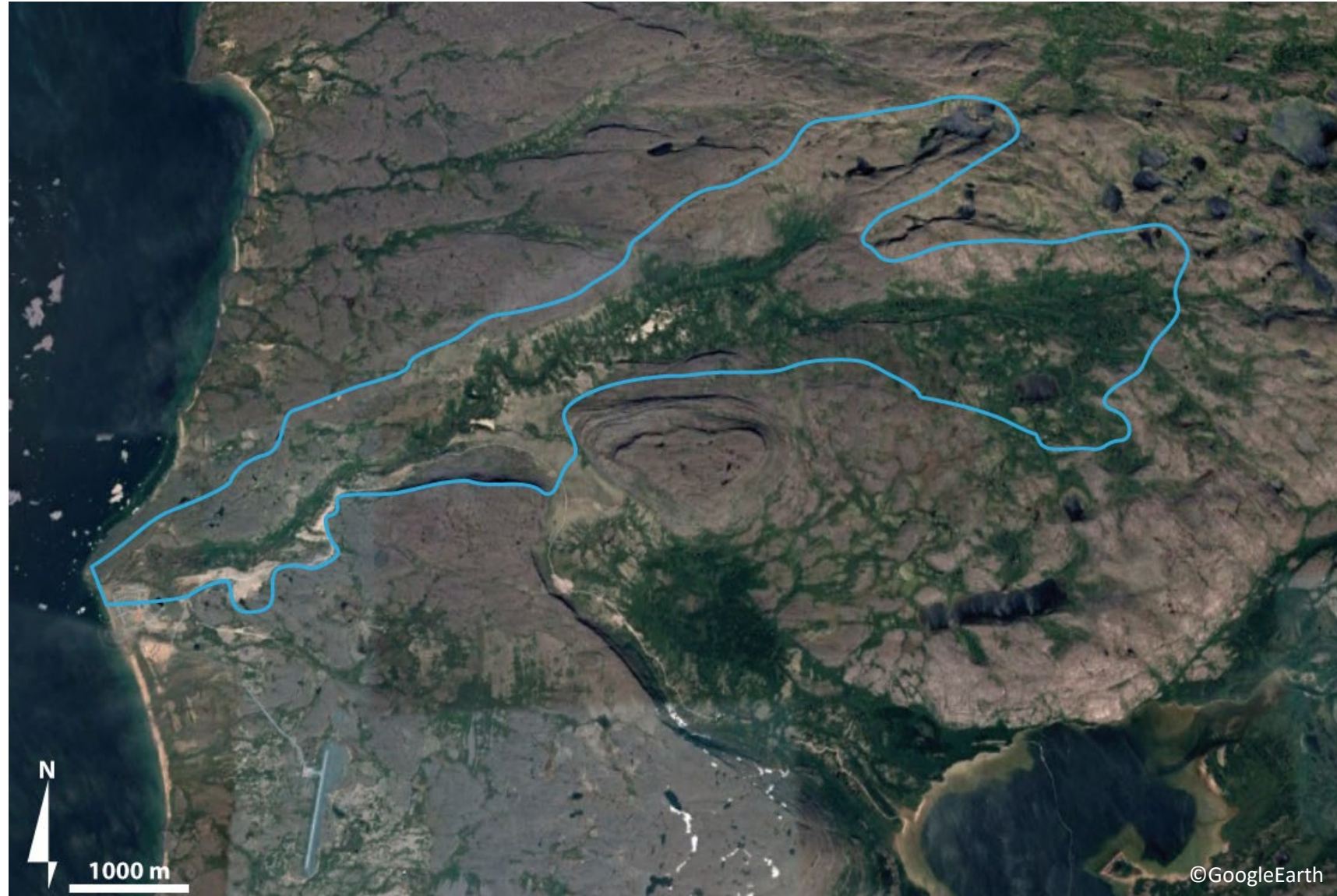
BIP Session: case studies

OHMI NUNAVIK – CCC and surface water in Umiujaq: a viral issue

1. Location



- Subarctic environment
- Local high population density
- Few ground connections
- A 12 ha watershed



BIP Session: case studies

OHMI NUNAVIK – CCC and surface water in Umiujaq: a viral issue

2. Problematics

Surface water is the lonely source for water (drinking water included)

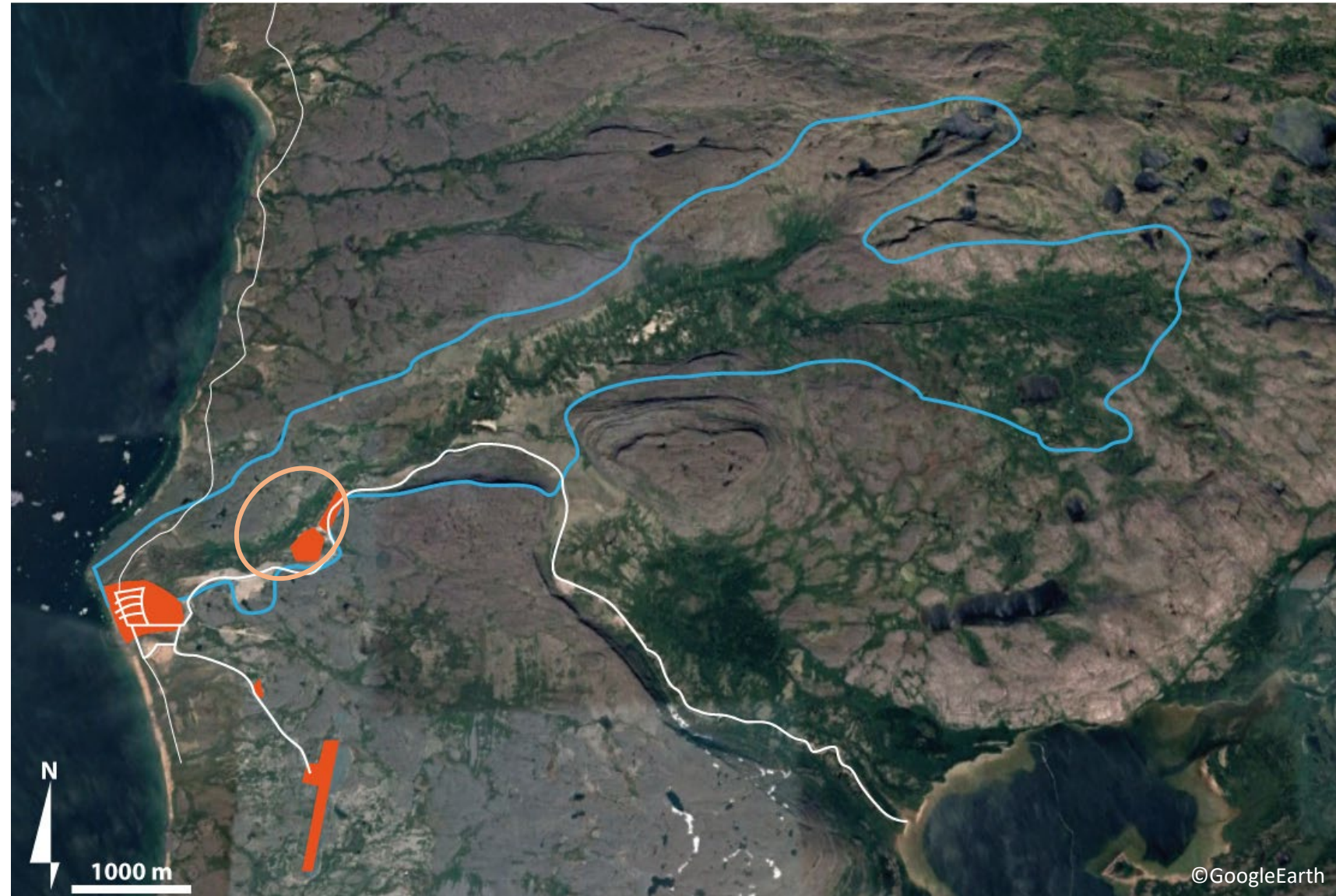
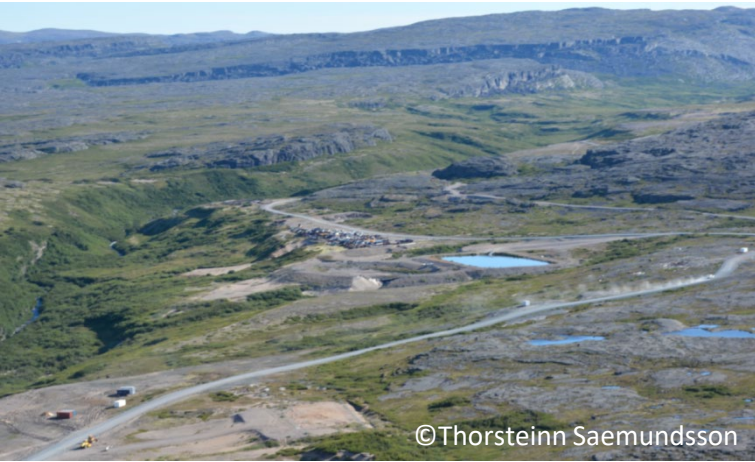


BIP Session: case studies

OHMI NUNAVIK – CCC and surface water in Umiujaq: a viral issue

2. Problematics

a. Public dump & wastewater ponds located upstream from the village



BIP Session: case studies

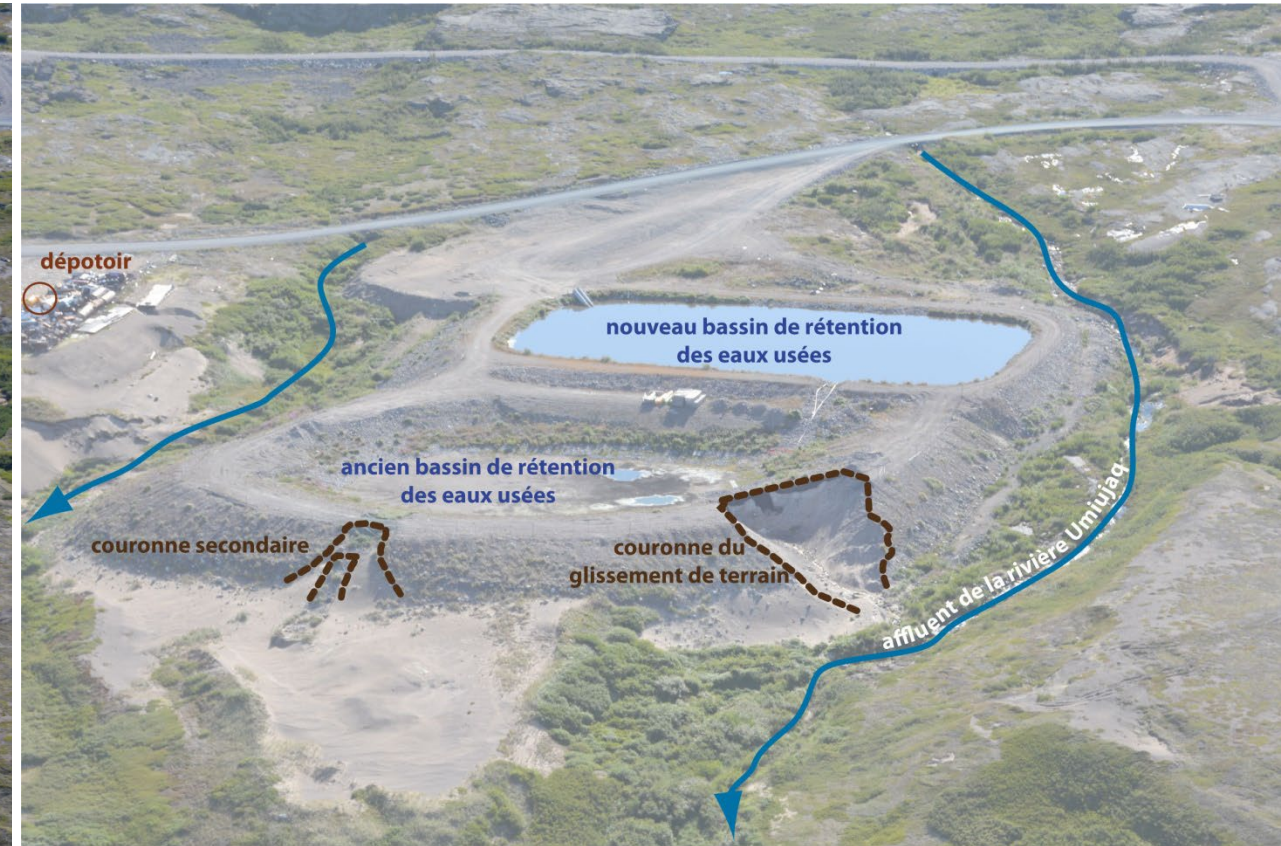
OHMI NUNAVIK – CCC and surface water in Umiujaq: a viral issue

2. Problematics

a. Public dump & wastewater ponds located upstream from the village

"The sewage retention basin was dumped into the river because of an avalanche. No one was hurt... except the fish. But people were told not to drink the water. The dump is also too close to the river".

- Path, Town manager d'Umiujaq



BIP Session: case studies

OHMI NUNAVIK – CCC and surface water in Umiujaq: a viral issue

2. Problematics

a. Public dump & wastewater ponds located upstream from the village



©Thorsteinn Saemundsson



BIP Session: case studies

OHMI NUNAVIK – CCC and surface water in Umiujaq: a viral issue

2. Problematics

- | | | |
|---|---|--|
| a. Public dump & wastewater ponds located upstream from the village | ↔ | a. Recent human presence (<1986) with low “urban” infrastructures /settlement |
| b. Unstable slopes (permafrost degradation, ...) | ↔ | b. Increasing water turbidity (chemical elements, organic matter, fine sediments, ...) impacting fishes and their nutriments |
| c. New plant and animal species (greening + invasive animals) | ↔ | c. Species competitions, water level changes, local temperature increase, ... |
| d. Indigenous community | ↔ | d. Human = river |

- Social issues (social networking, urbanisation)
- Environmental issues (system functioning, food ressources)
- Health issues (impact of toxic substances consumption on the human health)

➔ Rethinking the trajectory of these landscapes through different inputs from environmental, biological, toxicological and human sciences



BIP Session: case studies

OHMI NUNAVIK – CCC and surface water in Umiujaq: a viral issue



Contaminants analysis in the water system and contamination impacts on Inuit culture, identity, health and well-being

Toxicological study of water for the search of contaminants

Inuit appropriation of the notions of contamination/contaminants in the Umiujaq water system

Eco-systemic analysis of water landscapes and their contamination in Umiujaq in relation to climate change and anthropisation



BIP Session: case studies