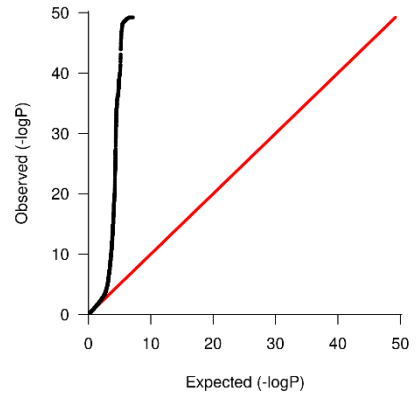
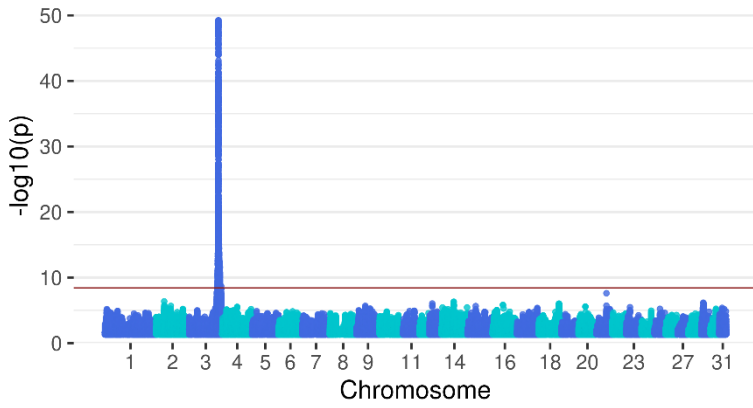
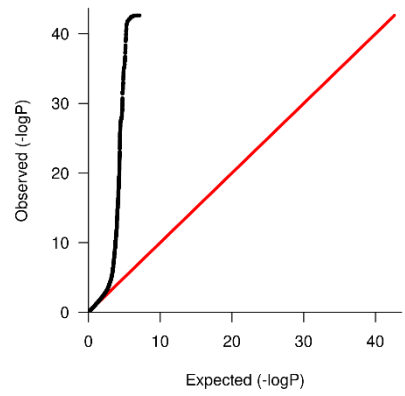
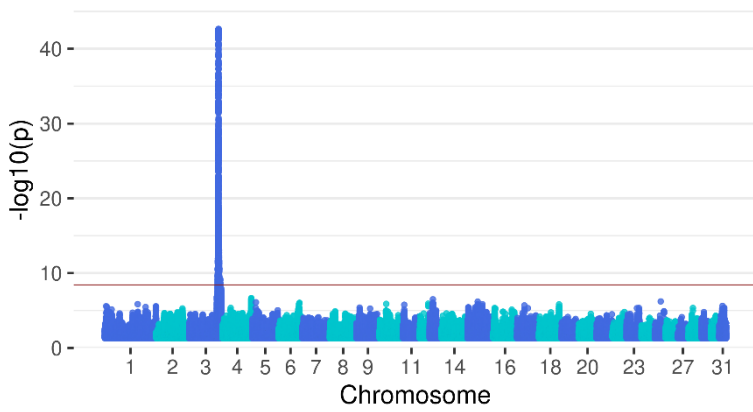


Breed type [plain - true to type]



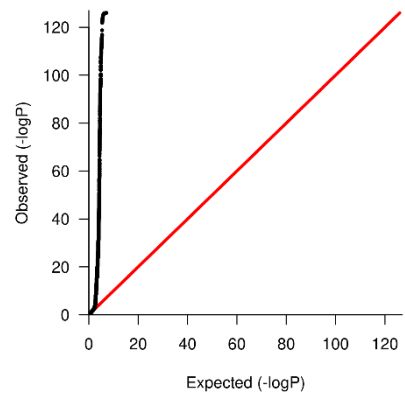
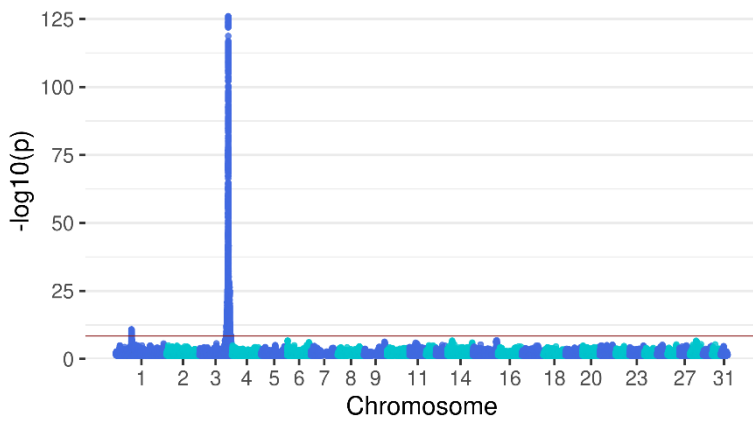
$$\lambda = 1.133$$

Gender expression [weak - strong]



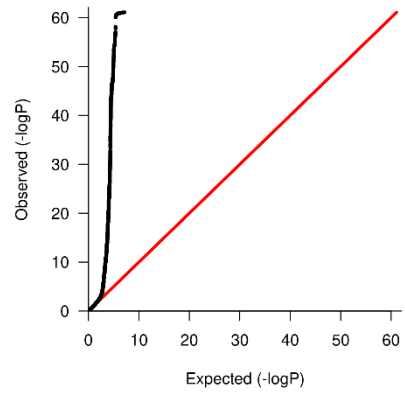
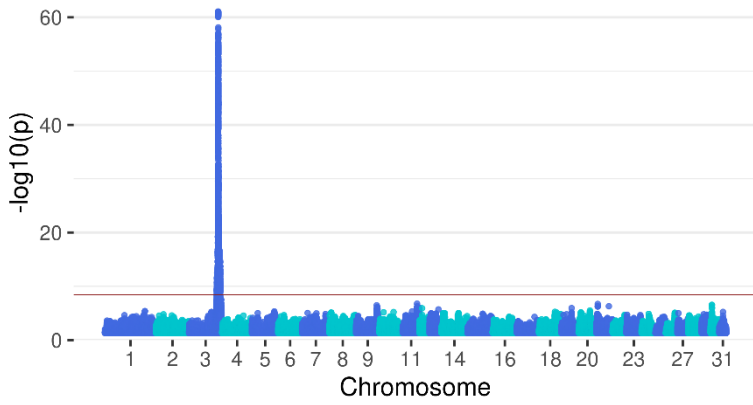
$$\lambda = 1.115$$

Frame [small-framed - large-framed]



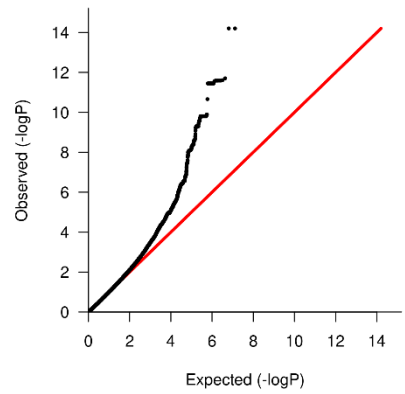
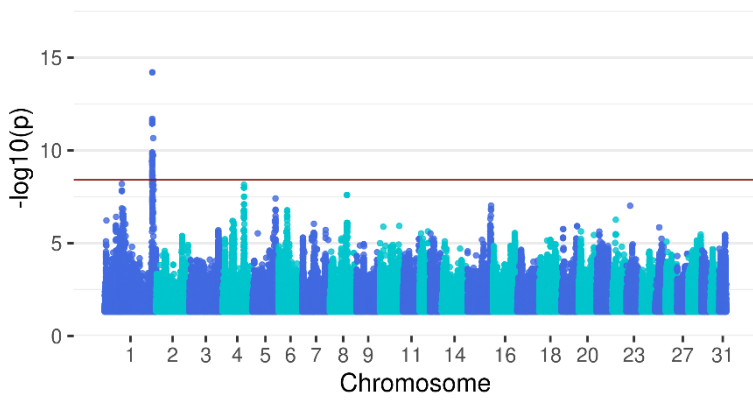
$$\lambda = 1.083$$

Caliber [light - heavy]



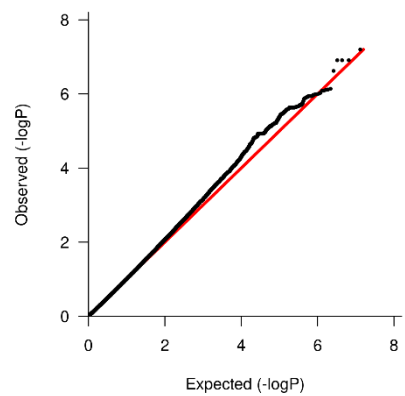
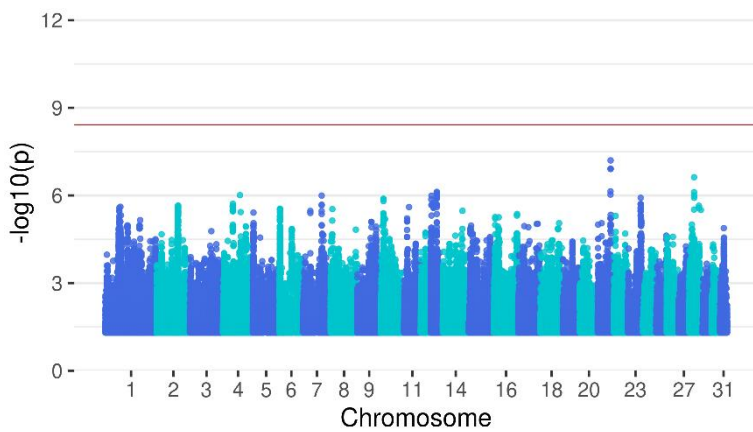
$\lambda = 1.018$

Chest width [narrow - wide]



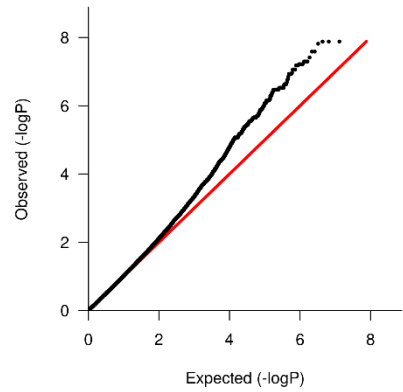
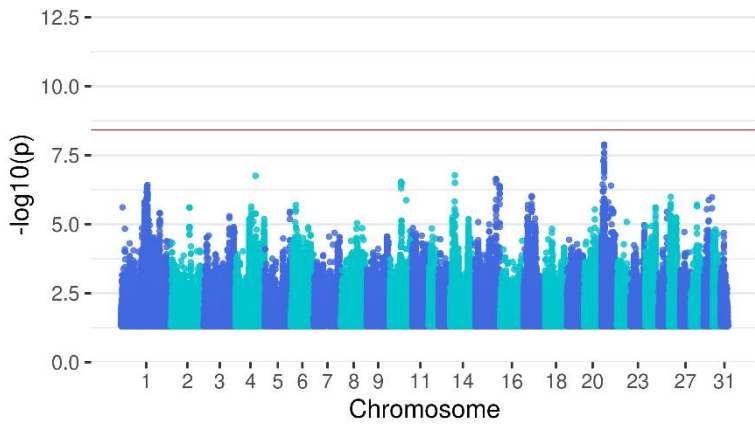
$\lambda = 0.945$

Barrel [shallow (tucked-up) - deep]



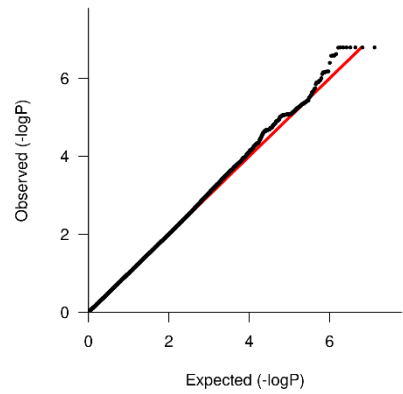
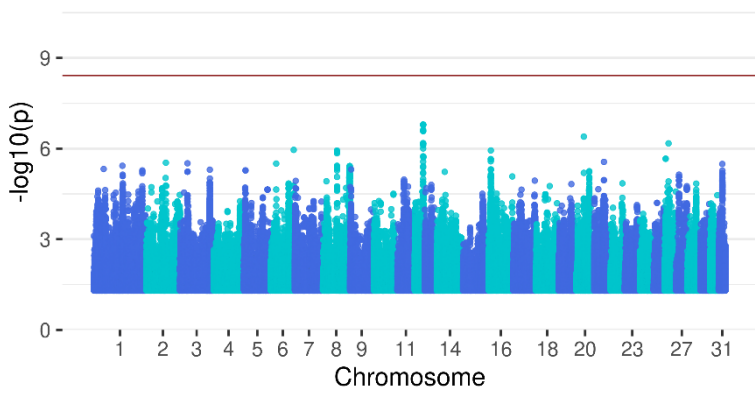
$\lambda = 0.983$

Condition [skinny - fat]



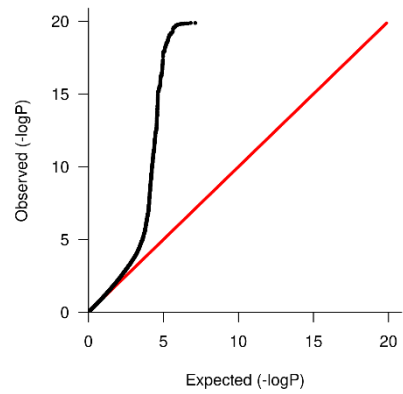
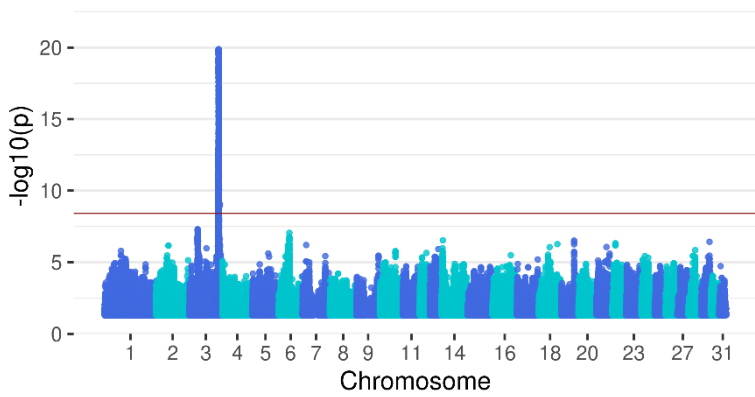
$$\lambda = 1.001$$

Development [poor - much]



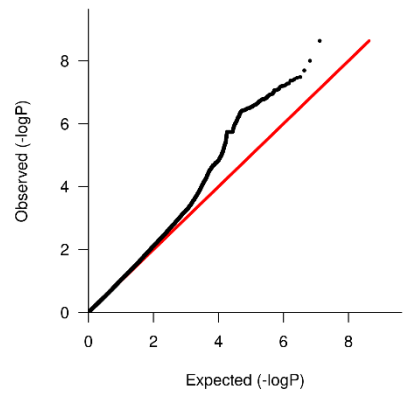
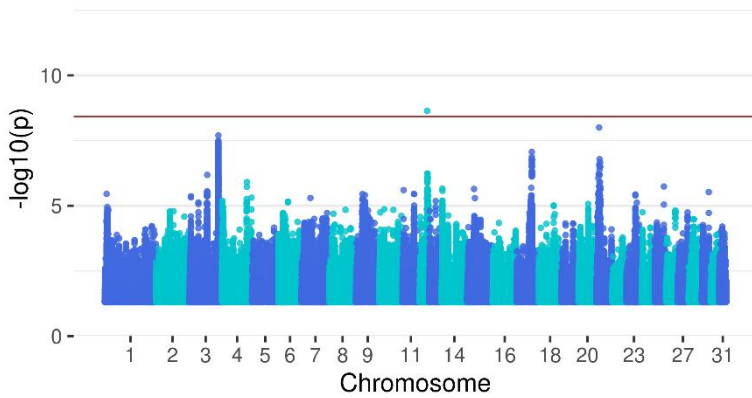
$$\lambda = 0.994$$

Length of legs [short-legged - long-legged]



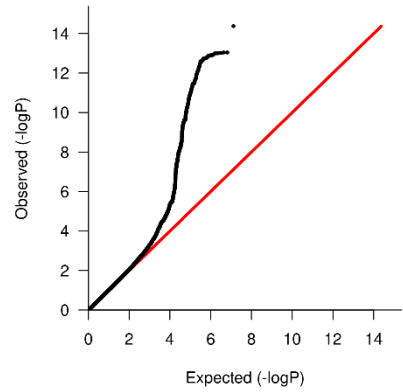
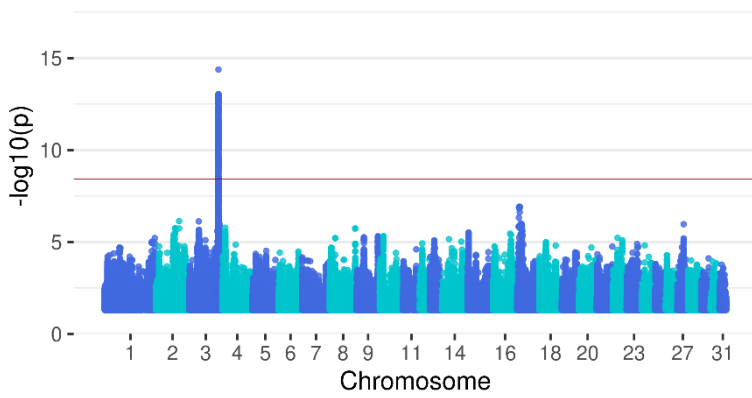
$$\lambda = 1.061$$

Harmony of proportions [unharmonious - harmonious]



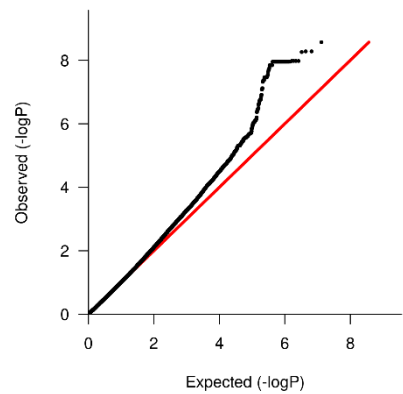
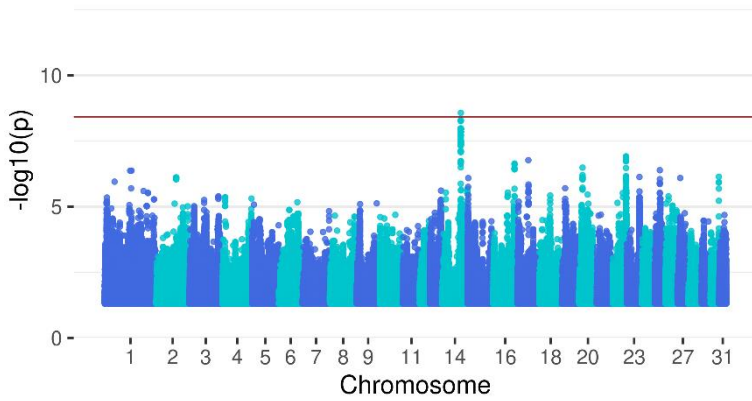
$\lambda = 1.024$

Body shape [square - (long-)rectangular]



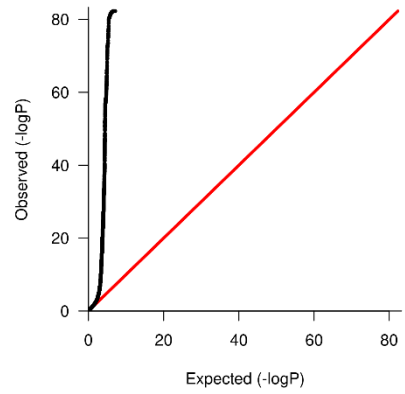
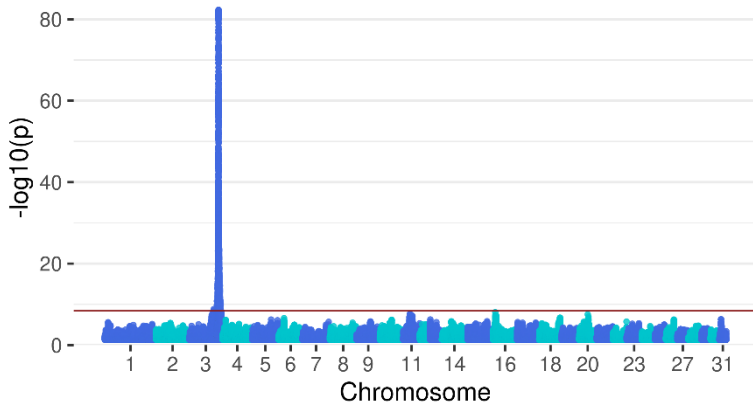
$\lambda = 0.996$

Body direction [downhill - uphill]



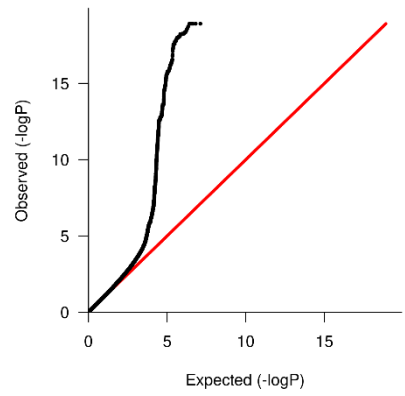
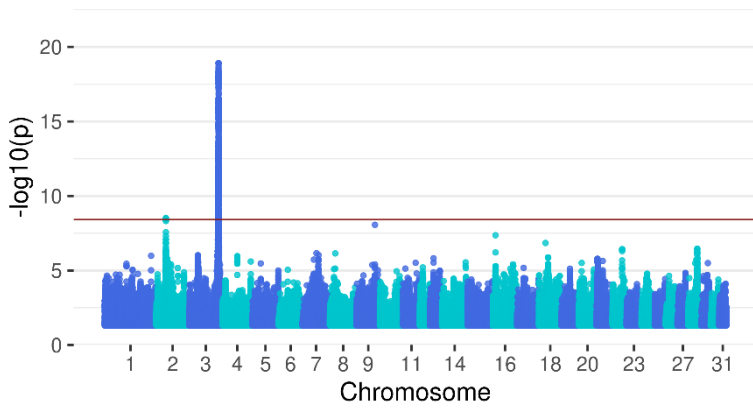
$\lambda = 0.989$

Head shape [coarse - fine]



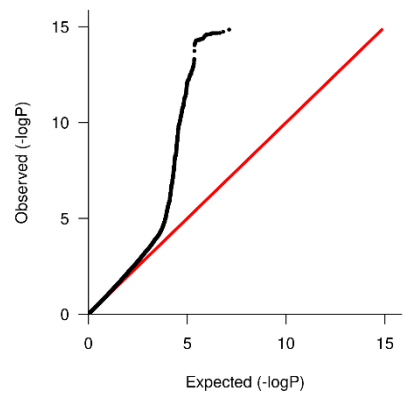
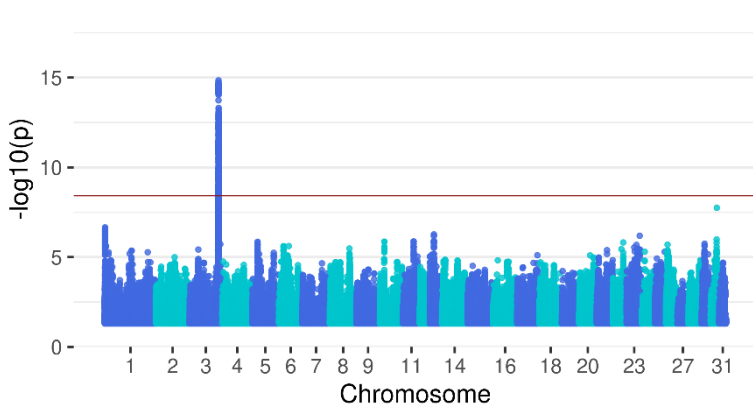
$$\lambda = 1.181$$

Head length [short - long]



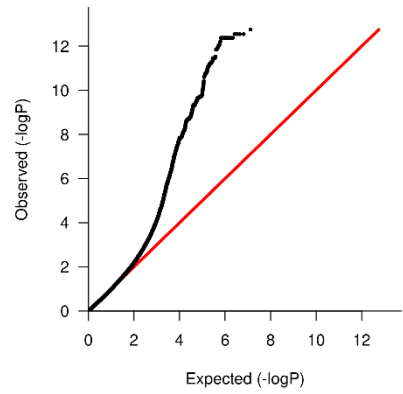
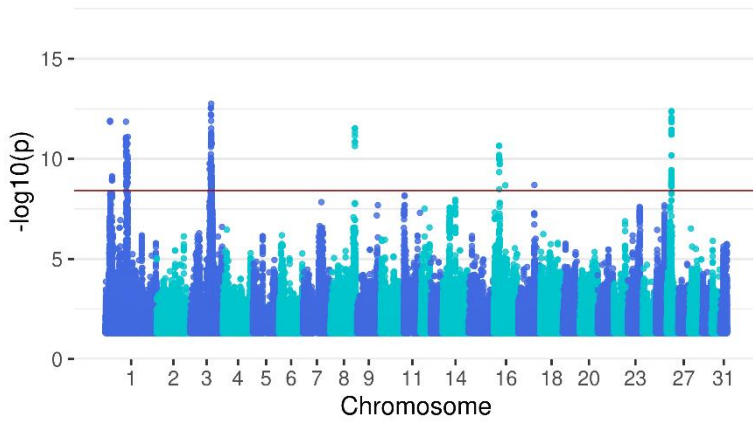
$$\lambda = 1.035$$

Eye size [small - large]



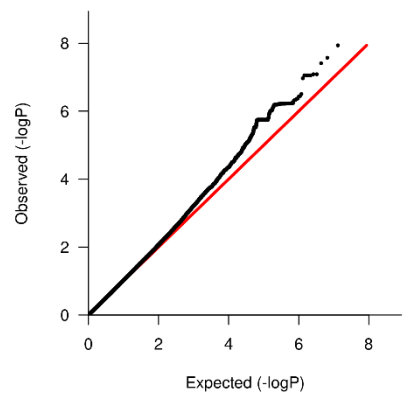
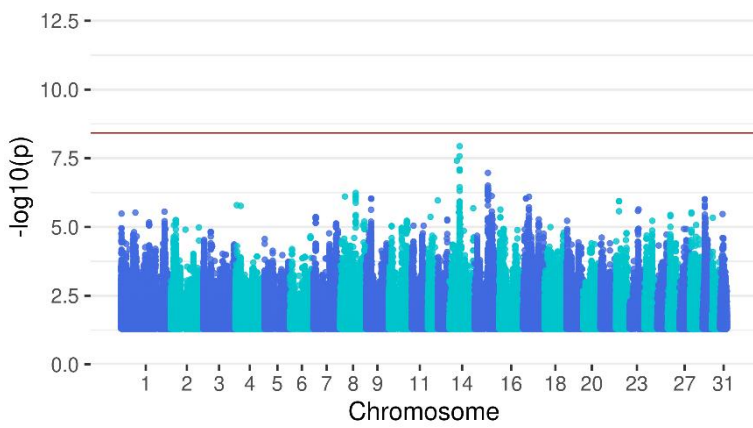
$$\lambda = 1.057$$

Eye colour [white in the eye]



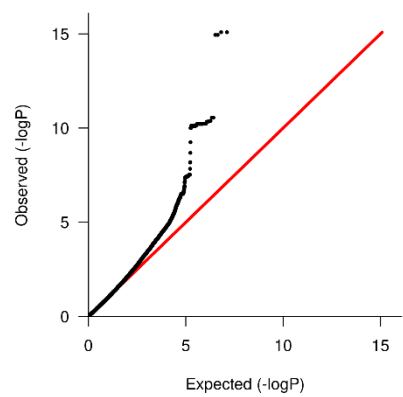
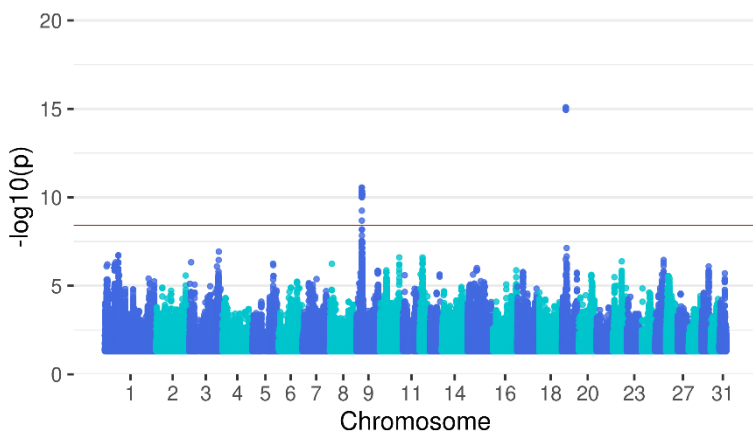
$$\lambda = 0.932$$

Head-neck connection [heavy - light]



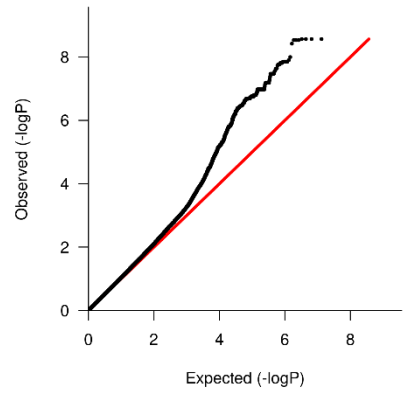
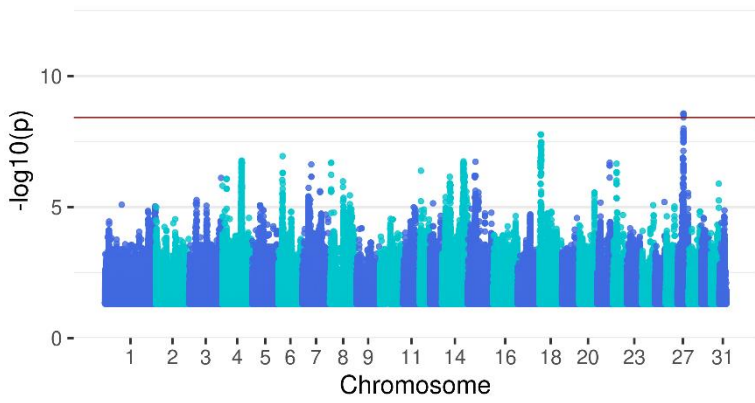
$$\lambda = 1.009$$

Cheeks (jowl) [heavy - light]



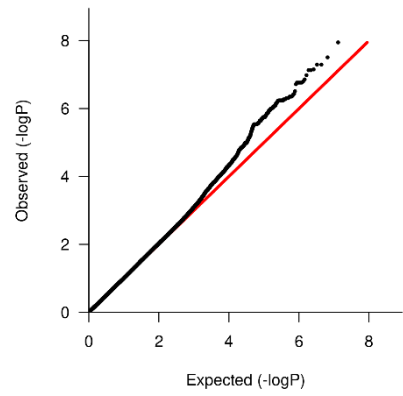
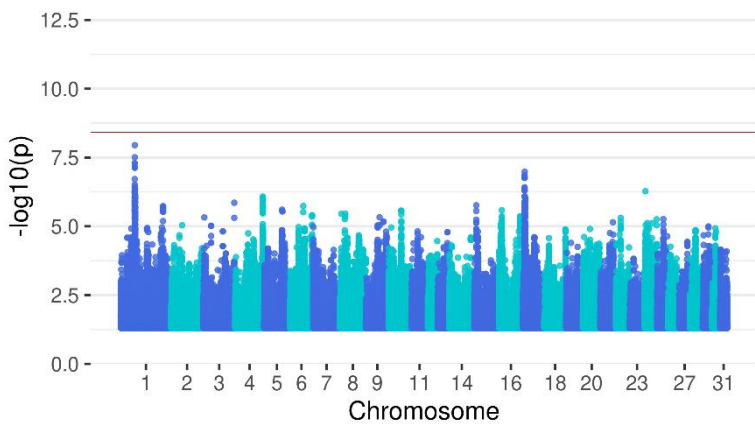
$$\lambda = 0.978$$

Length of neck [short - long]



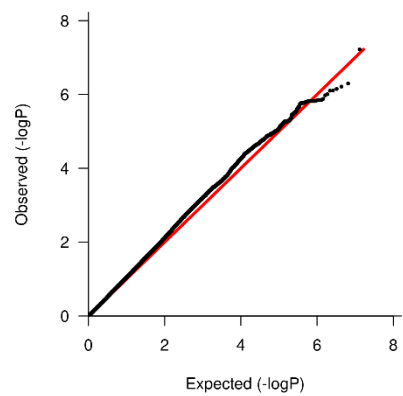
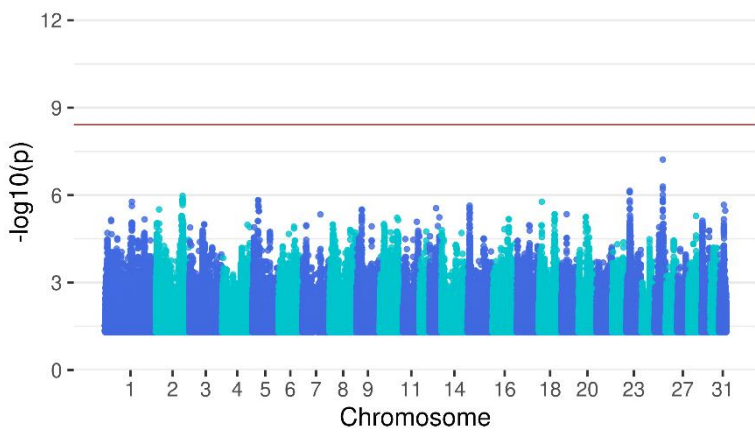
$\lambda = 1.041$

Set of neck [low - high]



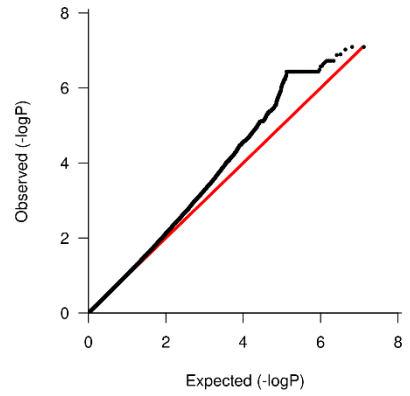
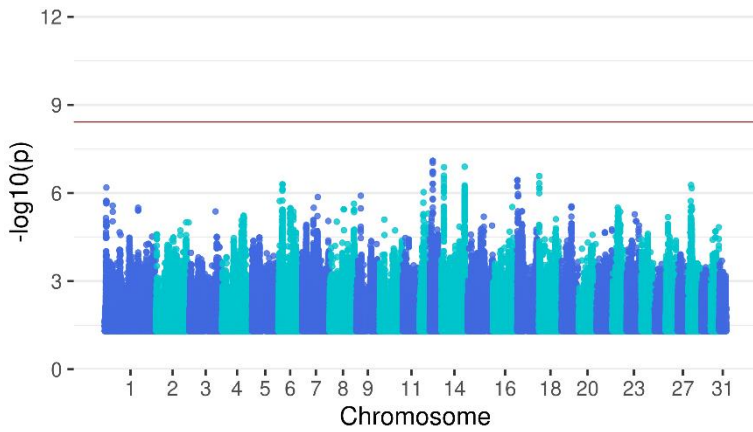
$\lambda = 1.002$

Muscling area of neck [ewe-necked - top line dominated neck]



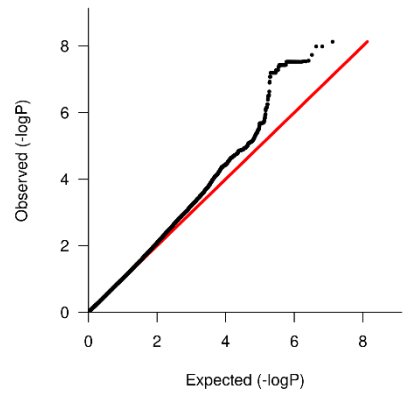
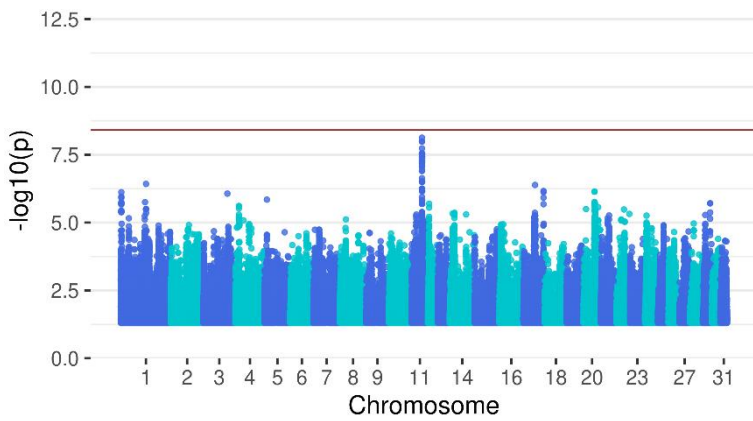
$\lambda = 1.054$

Shape of neck [straight - arched]



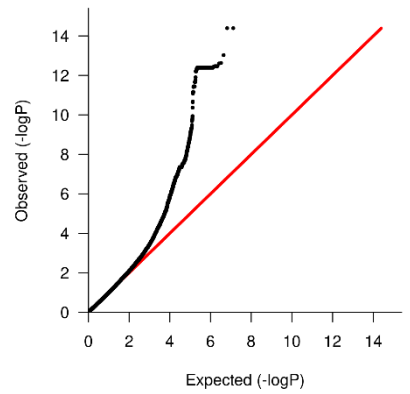
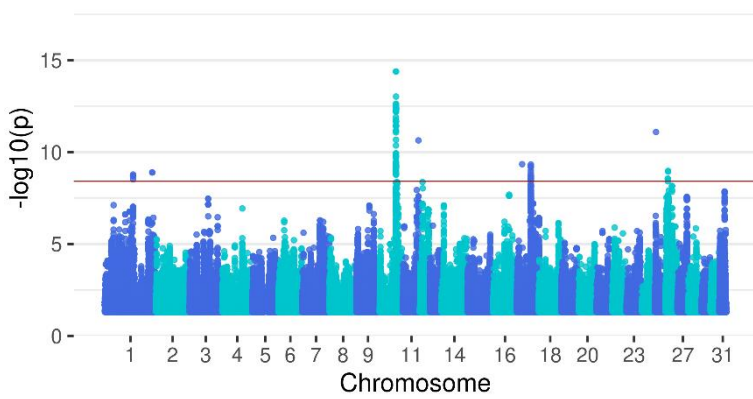
$$\lambda = 1.013$$

Shape of neck [thin - thick]



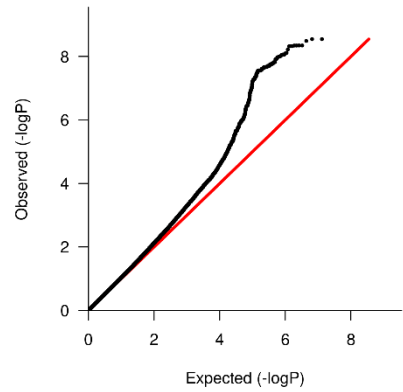
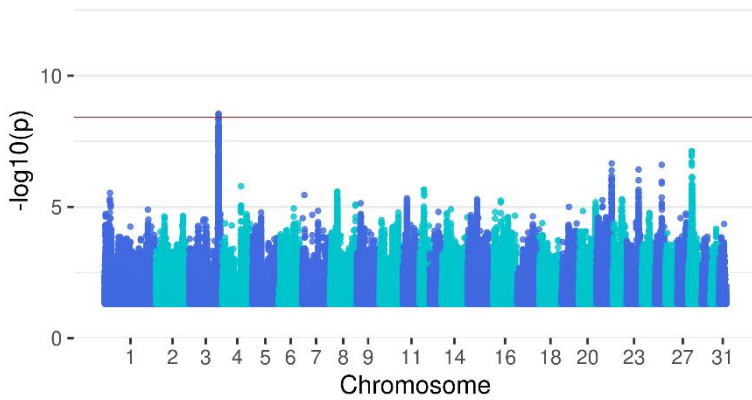
$$\lambda = 1.017$$

Neck connection to withers [marked notch/dip]



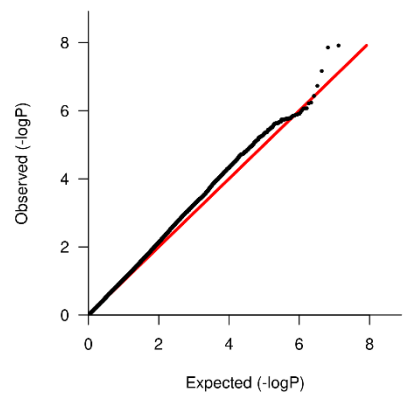
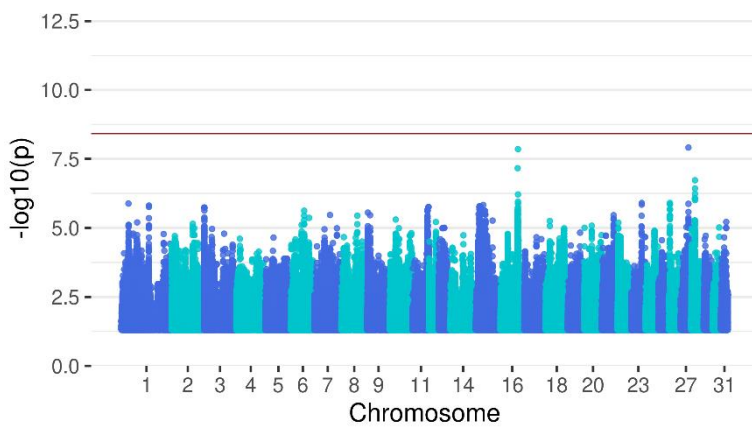
$$\lambda = 0.984$$

Length of withers [short - long]



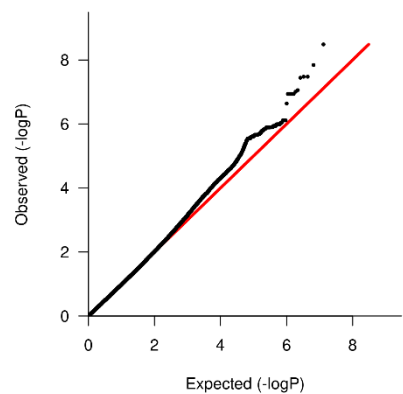
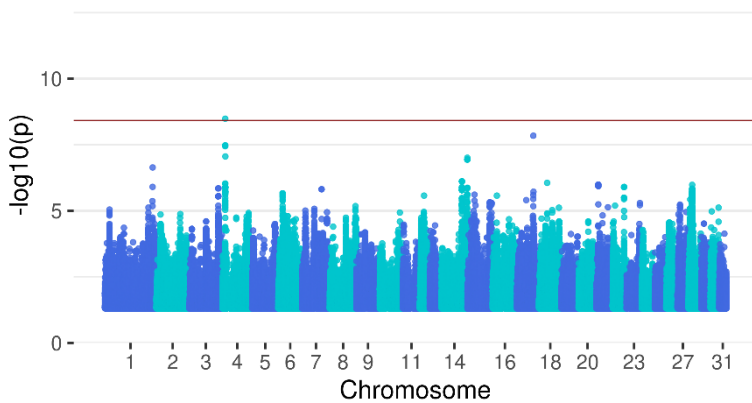
$$\lambda = 1.046$$

Height of withers [flat - high]



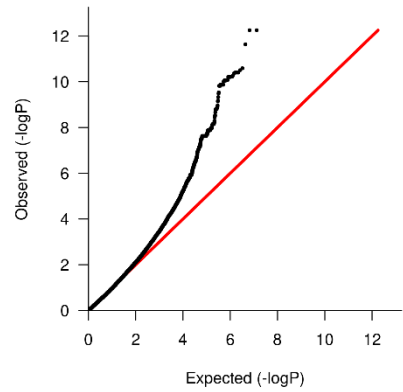
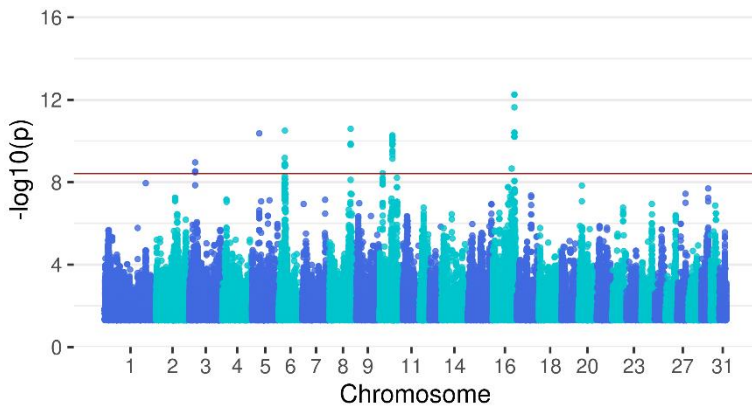
$$\lambda = 1.062$$

Length of shoulder [short - long]



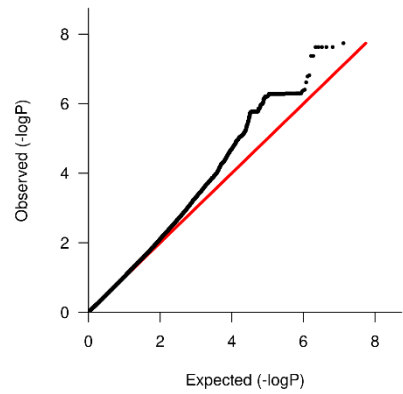
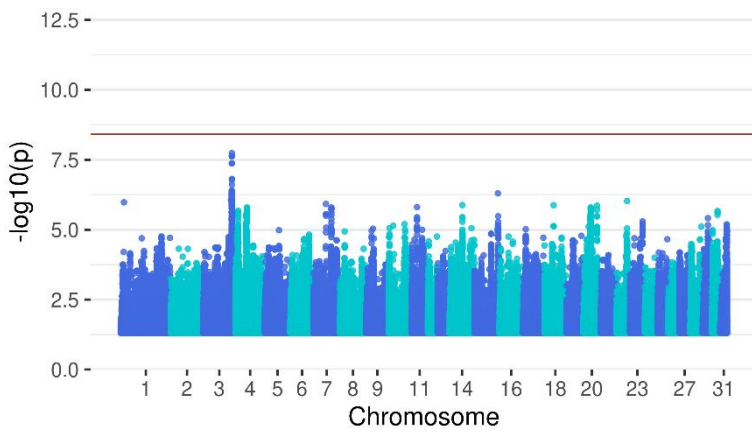
$$\lambda = 0.974$$

Shoulder position [clearly pushed forward]



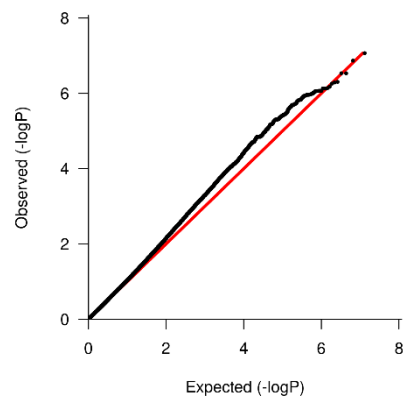
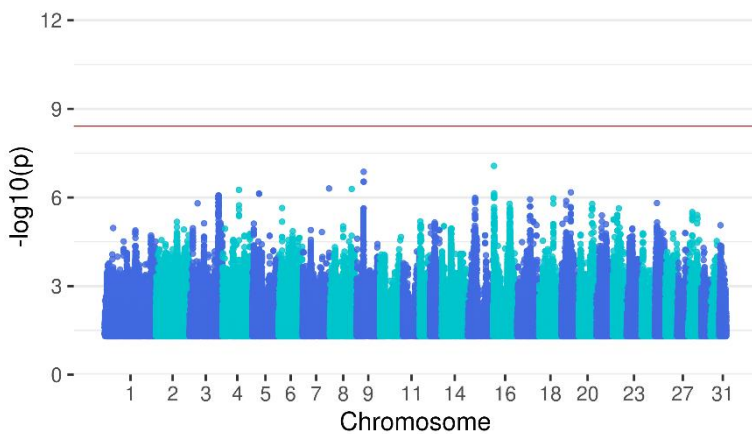
$$\lambda = 0.913$$

Course of topline [disturbed - straight]



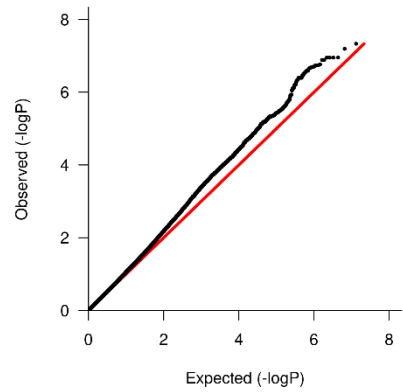
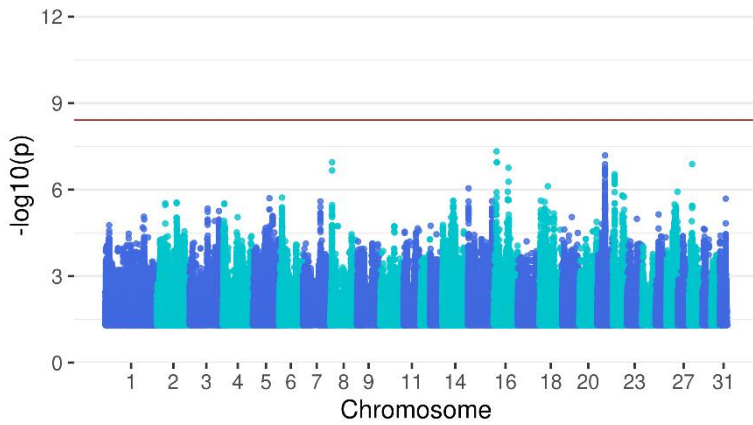
$$\lambda = 1.014$$

Length of back [short - long]



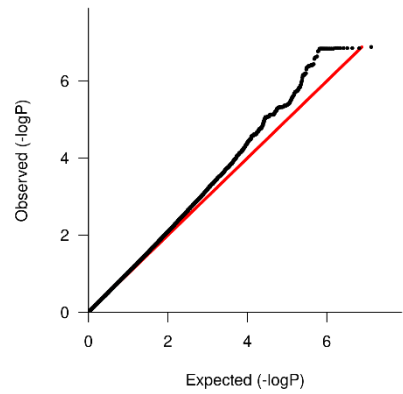
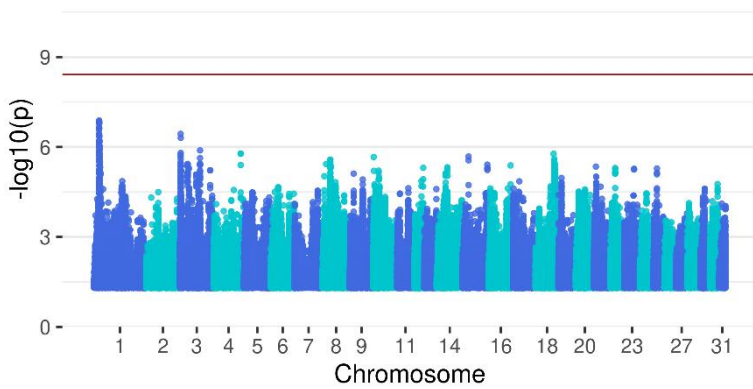
$$\lambda = 1.031$$

Line (strength) of back [dipped - roached]



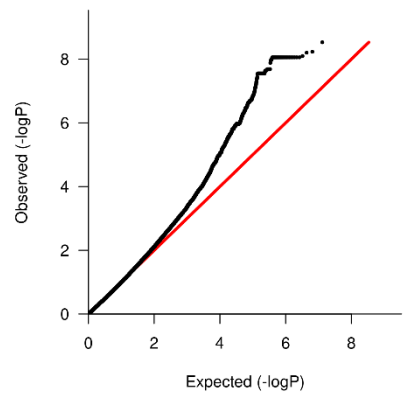
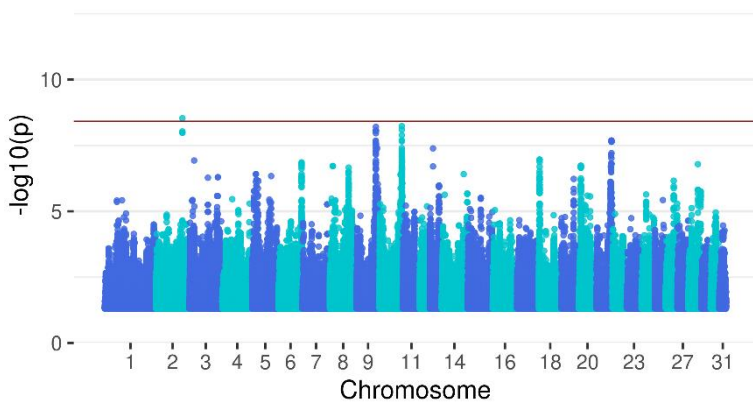
$\lambda = 1.055$

Line (strength) of loins [dipped (weak) - roached]



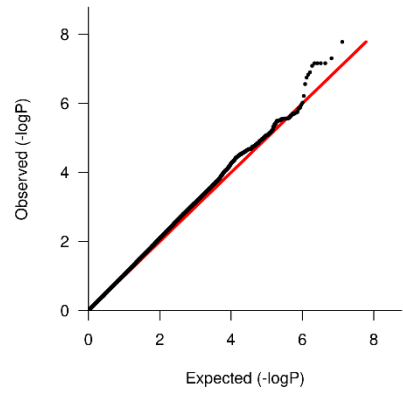
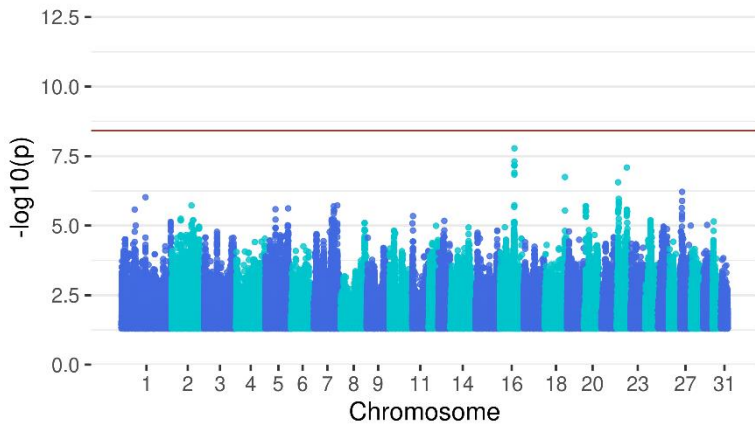
$\lambda = 1.039$

Length of croup [short - long]



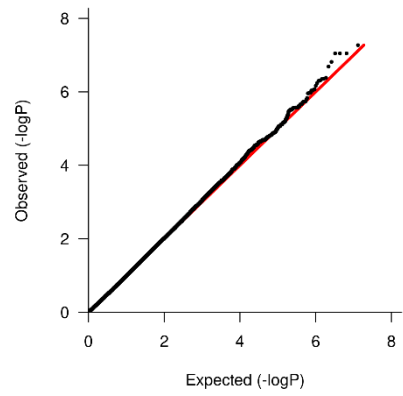
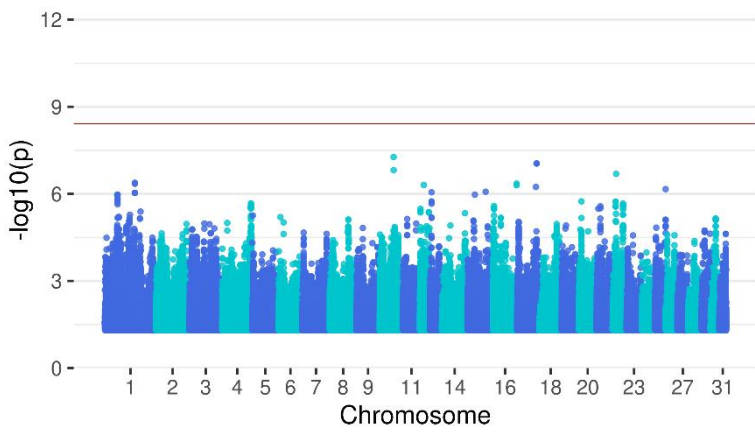
$\lambda = 0.950$

Angle (inclination) of croup [flat (level) - sloping]



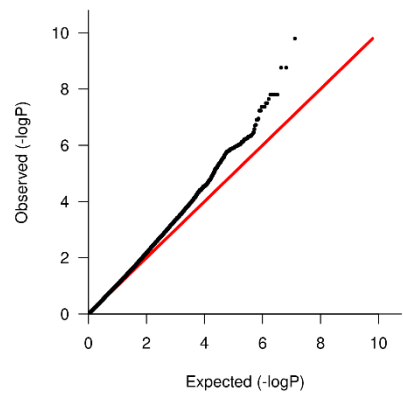
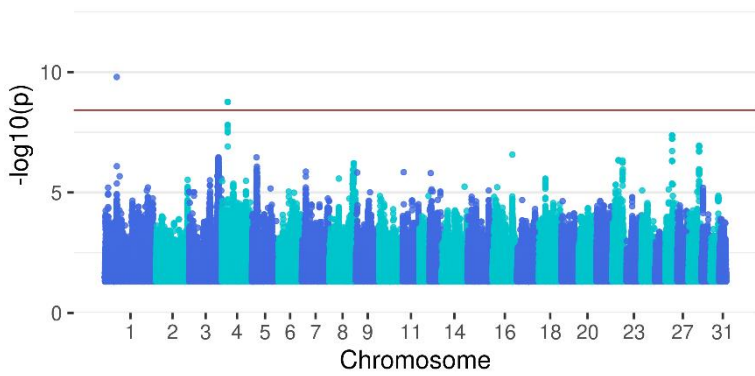
$\lambda = 1.033$

Shape of croup [angular - round]



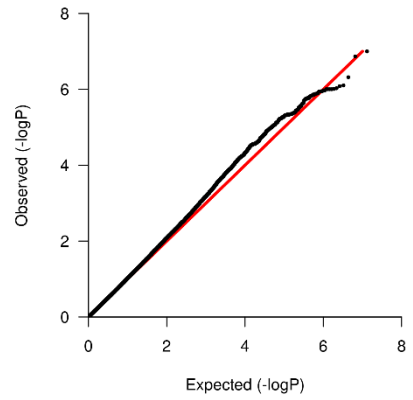
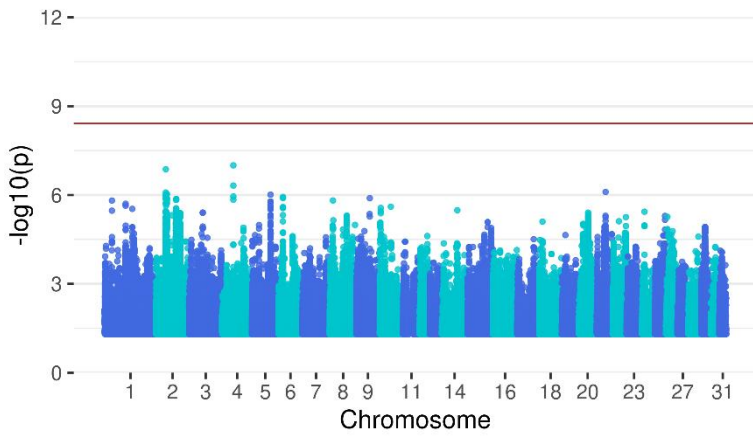
$\lambda = 0.948$

Set of tail [low - high]



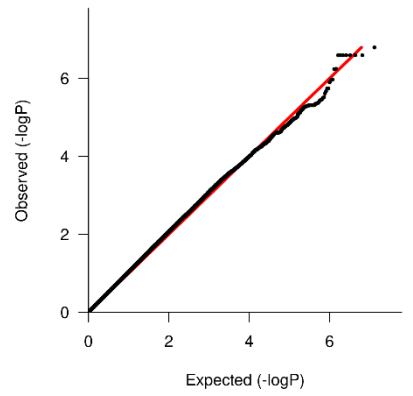
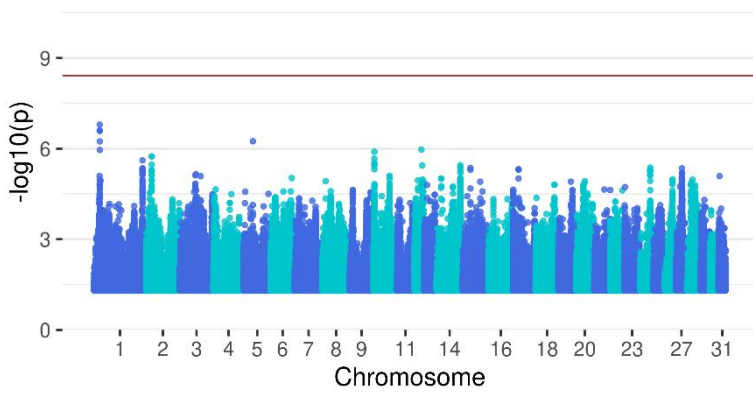
$\lambda = 1.060$

Position of carpus [over at knee - back at knee]



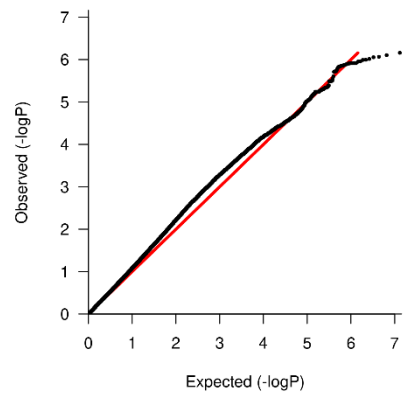
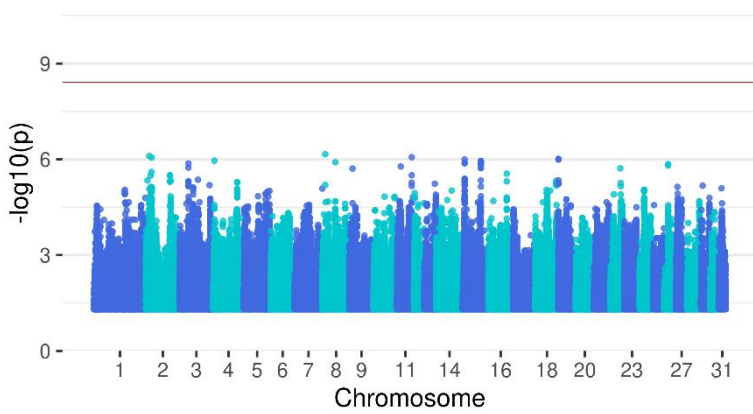
$\lambda = 1.008$

Length of forelimb pastern [short - long]



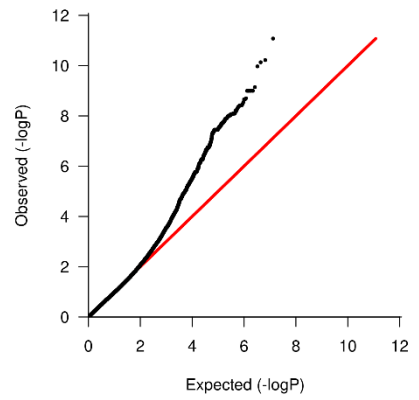
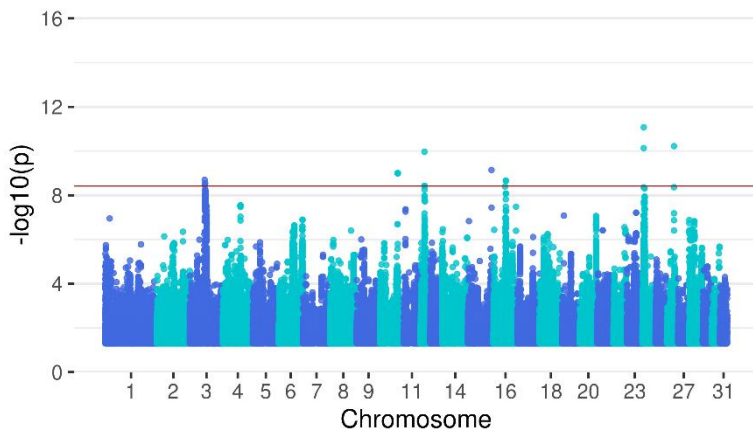
$\lambda = 1.038$

Stance of forelimb pastern [upright - sloping (weak)]



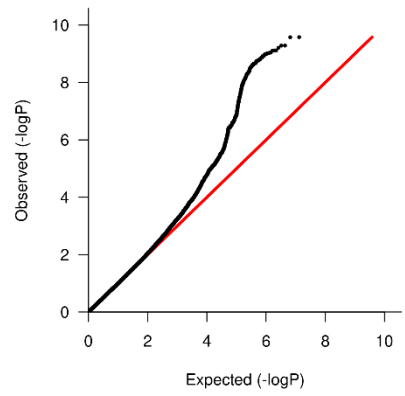
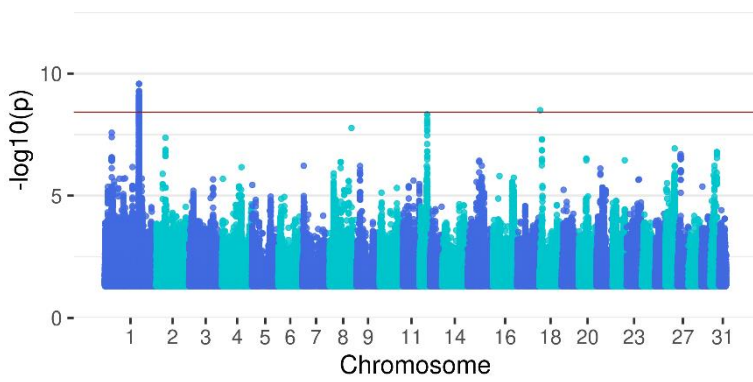
$\lambda = 1.102$

Broken toe axis in front limbs [markedly broken toe axis]



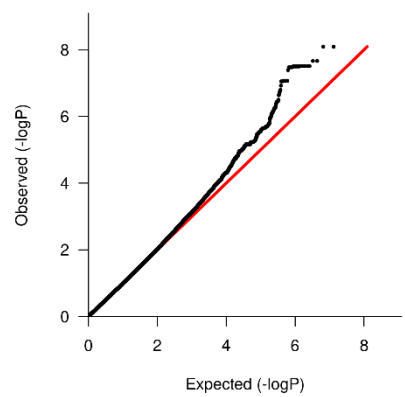
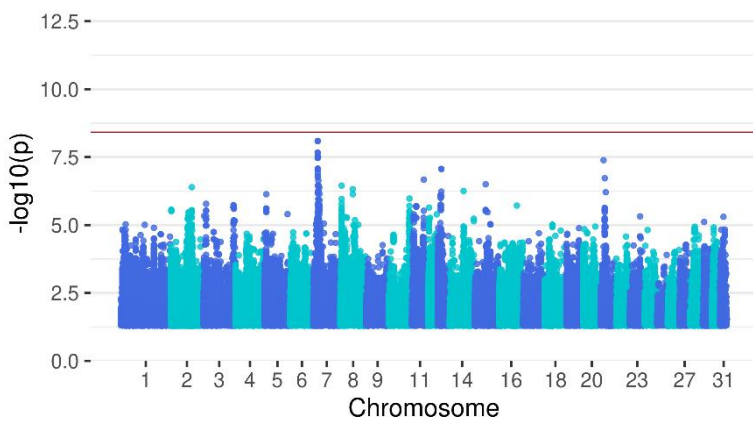
$\lambda = 1.004$

Definition of foreleg joints [flat (weak) - distinct]



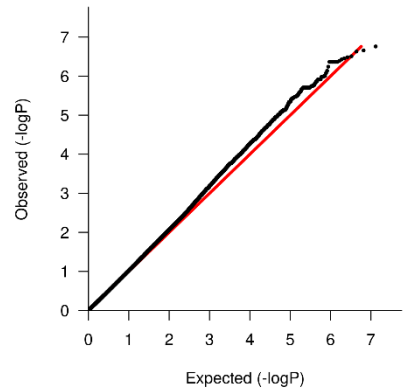
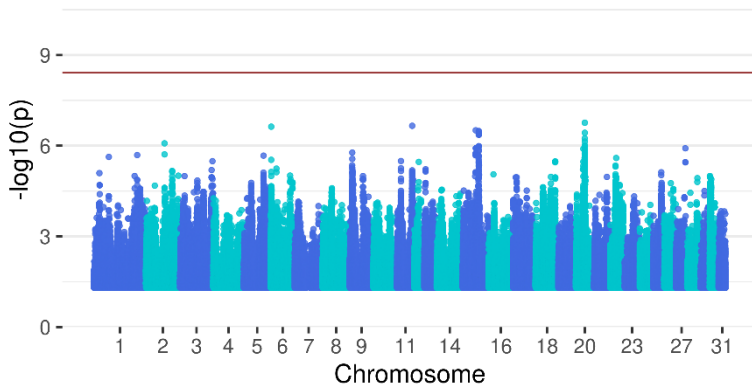
$\lambda = 0.988$

Definition of carpus-cannon articulation [flat - tied-in]



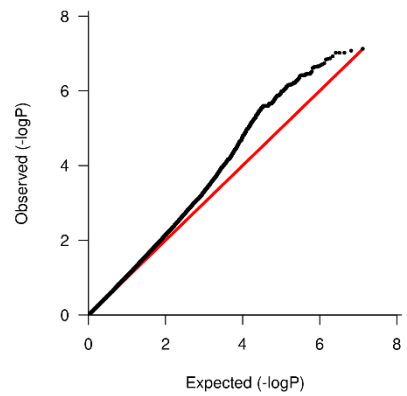
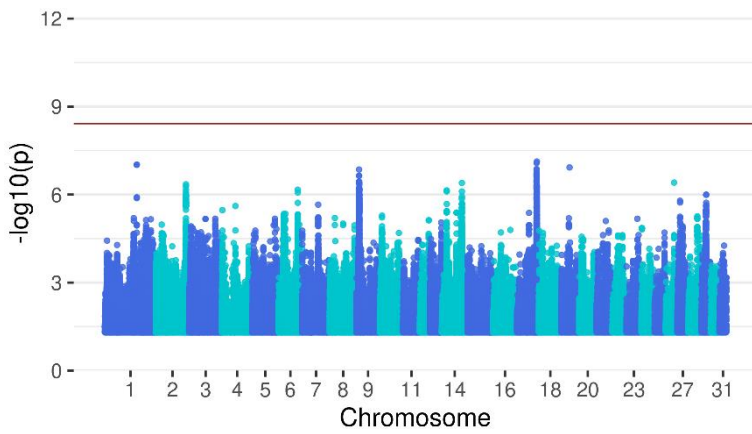
$\lambda = 0.990$

Length of hind limb pastern [short - long]



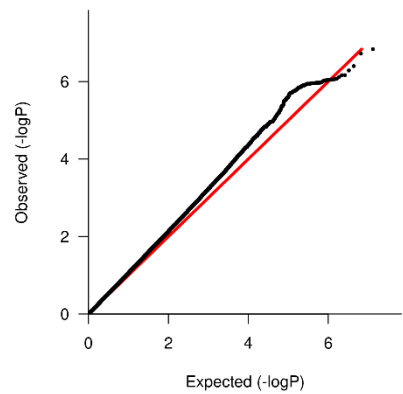
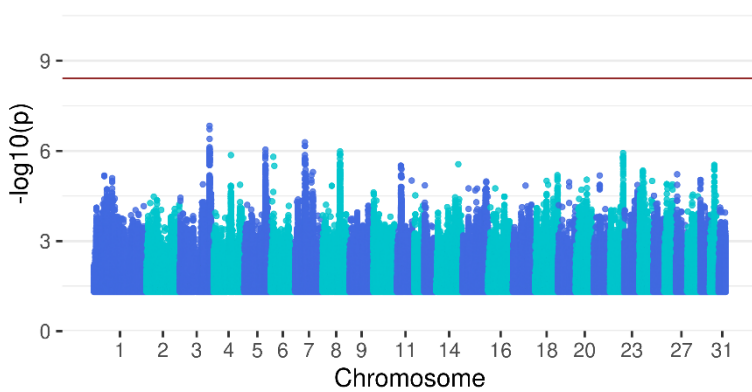
$$\lambda = 1.024$$

Stance of hind limb pastern [upright - weak]



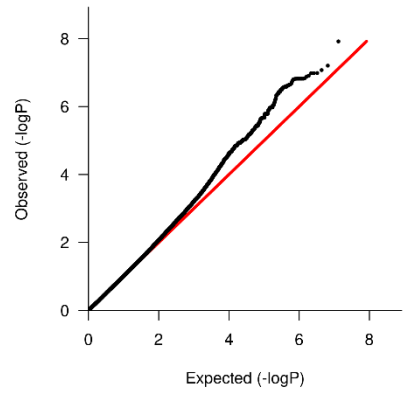
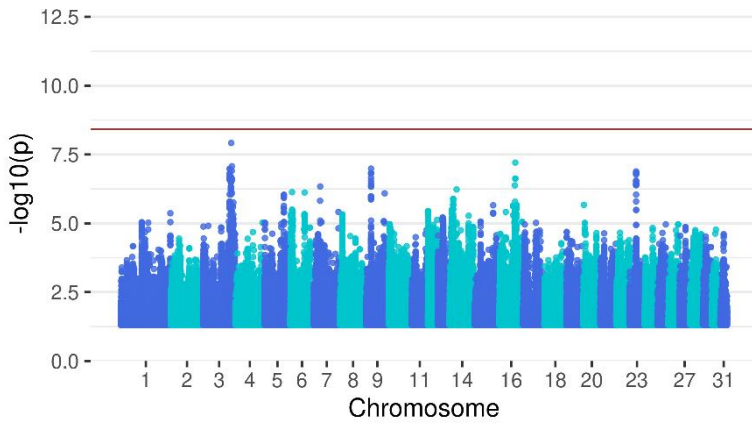
$$\lambda = 1.050$$

Hock angulation [straight - angulated]



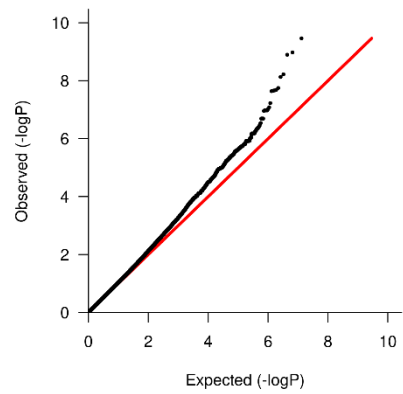
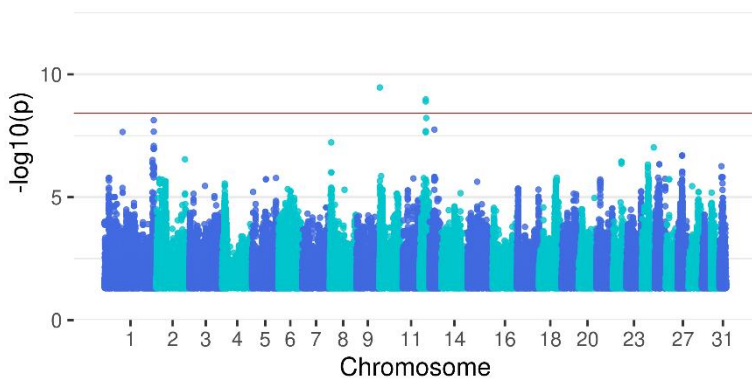
$$\lambda = 1.076$$

Hind leg [round]



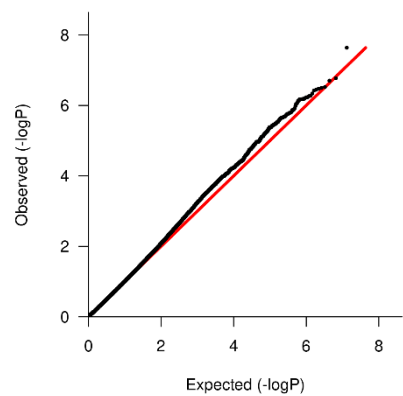
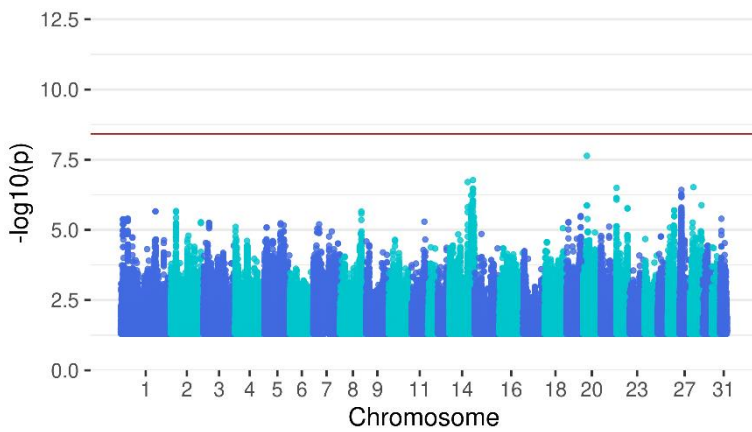
$\lambda = 1.014$

Capped hock [markedly capped hock]



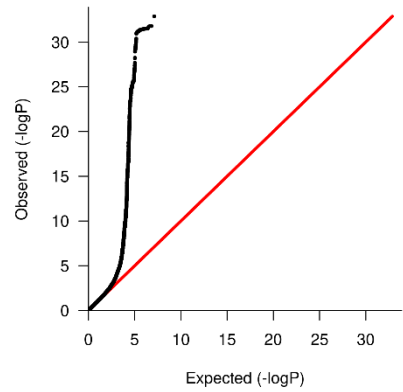
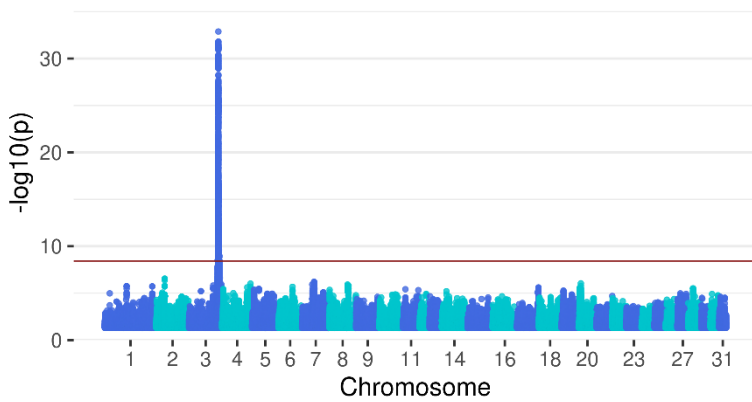
$\lambda = 1.050$

Definition of tarsus-cannon articulation [flat - tied-in]



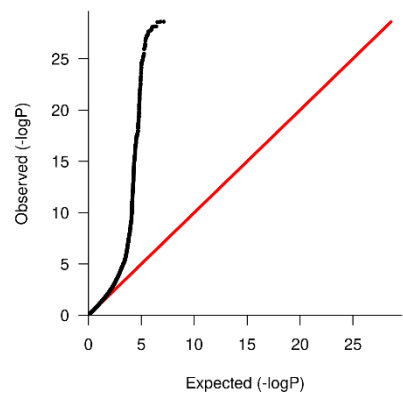
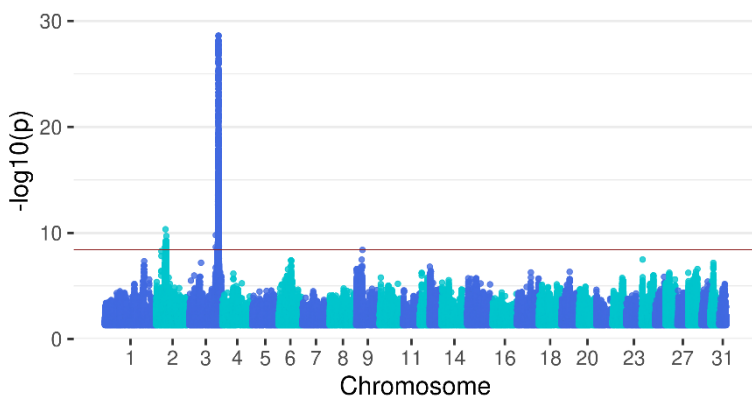
$\lambda = 0.985$

Size of joints [small - big]



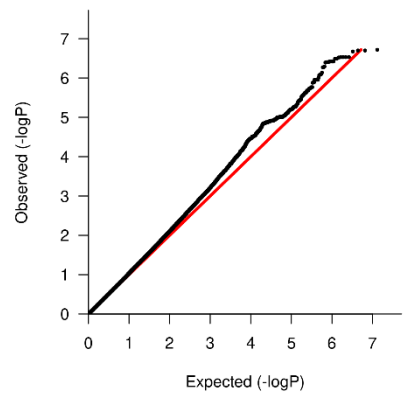
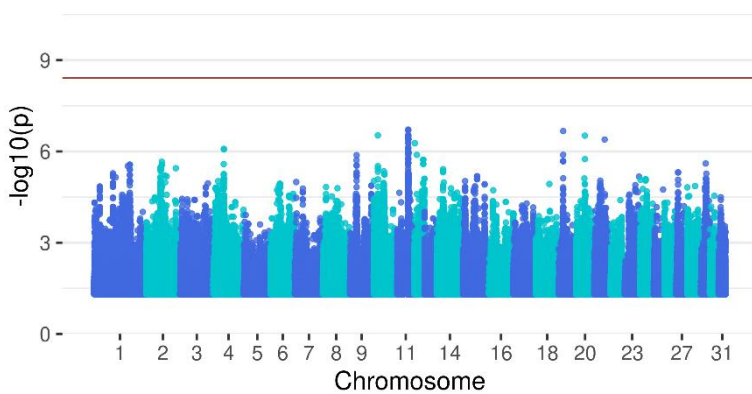
$$\lambda = 1.024$$

Shape of feet (hoof size) [narrow, small - wide, big]



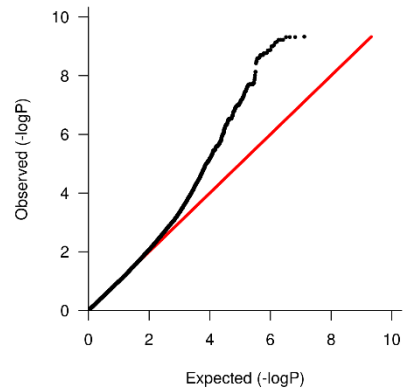
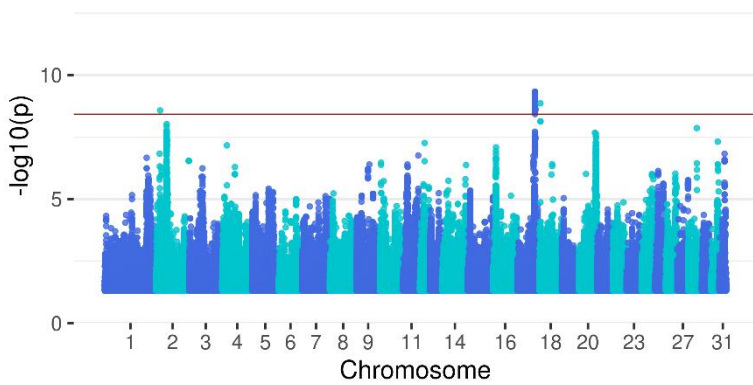
$$\lambda = 1.066$$

Heel height [flat hoof (-3), low heels - high heels, club foot (+3)]



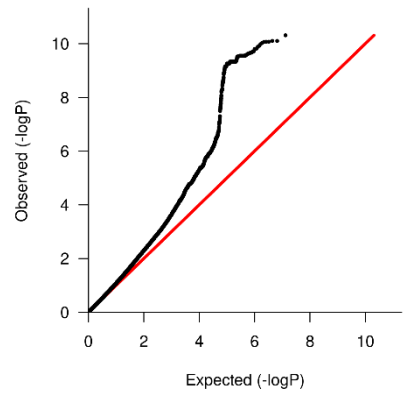
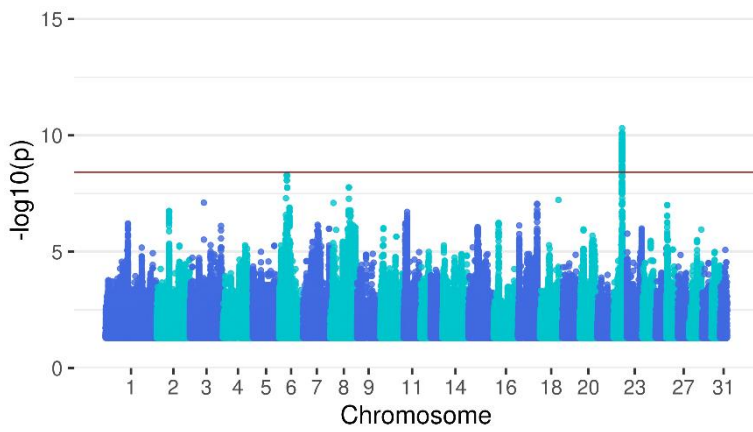
$$\lambda = 1.045$$

Hoof asymmetry (uneven shape of feet) [markedly uneven feet]



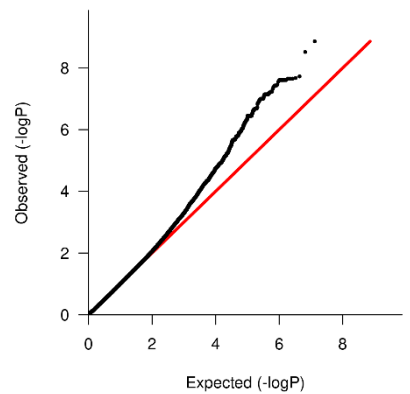
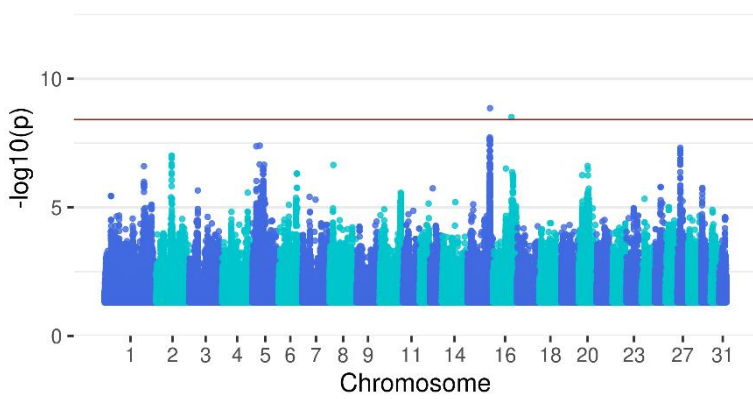
$\lambda = 0.990$

Toe stance of forelegs [toe-in - toe-out]



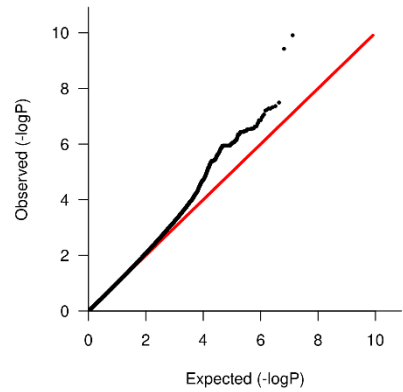
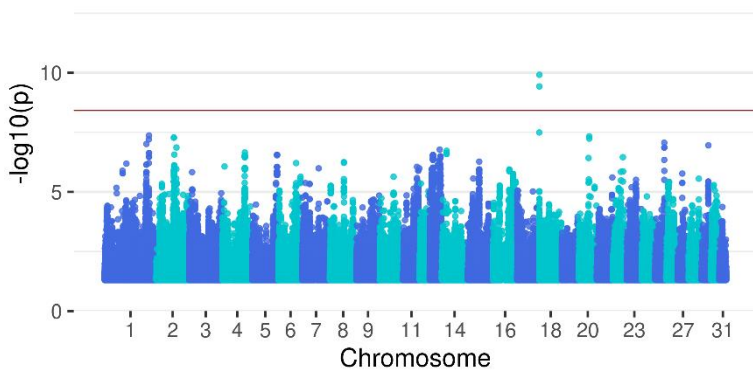
$\lambda = 1.087$

Standing position of front limbs [base-narrow - base-wide]



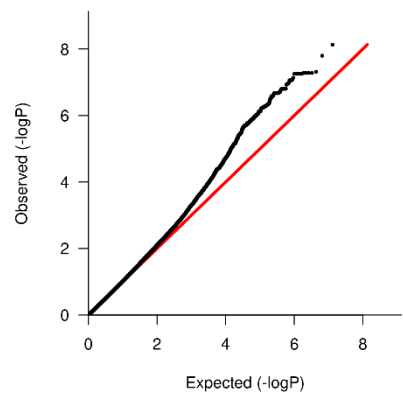
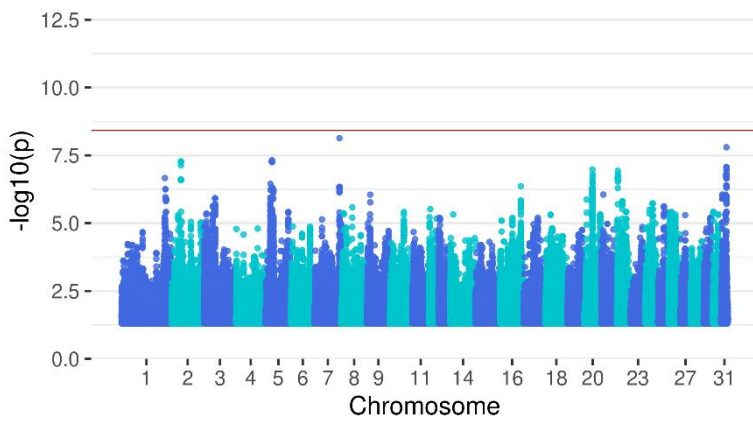
$\lambda = 0.981$

Toe stance of hind legs [toe-in - toe-out]



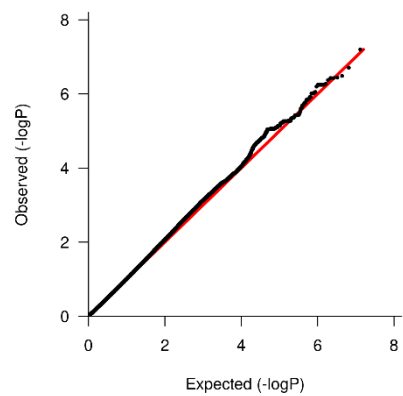
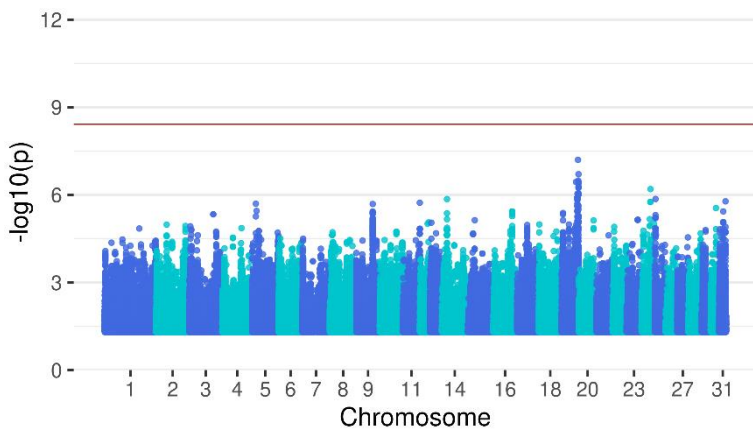
$\lambda = 0.976$

Standing position of hind limbs [base-narrow - base-wide]



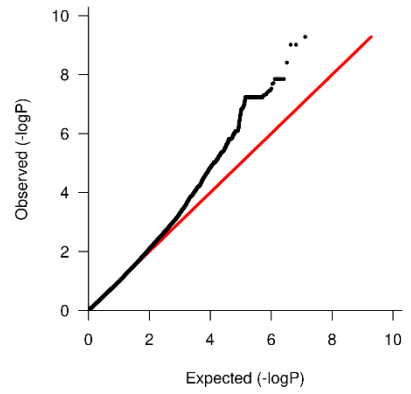
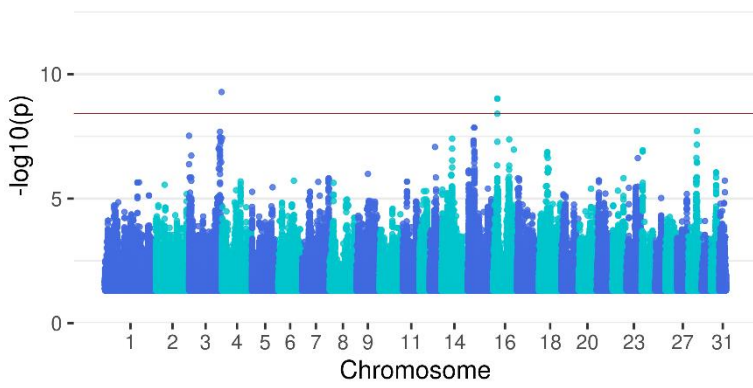
$\lambda = 0.986$

Position of hock - back view [bow-hocked - cow-hocked]



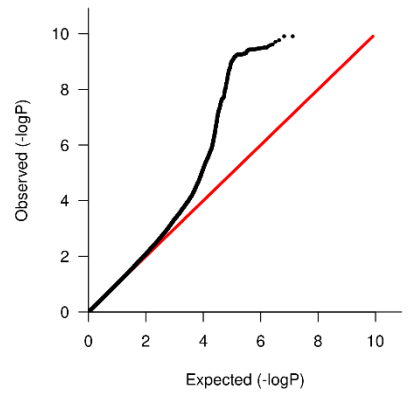
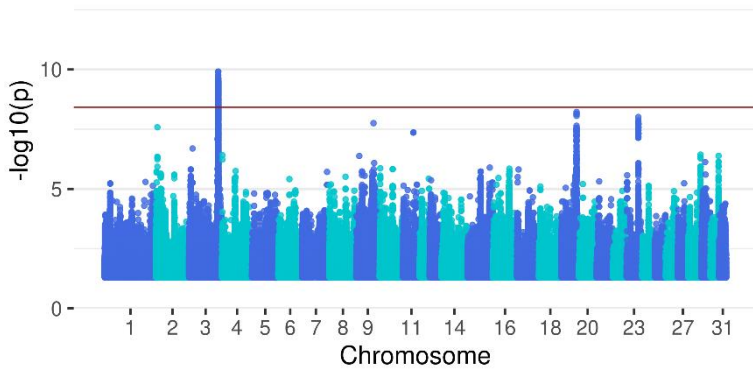
$\lambda = 0.979$

Correctness of limb movement [plaiting (brushing) - dishing (winging)]



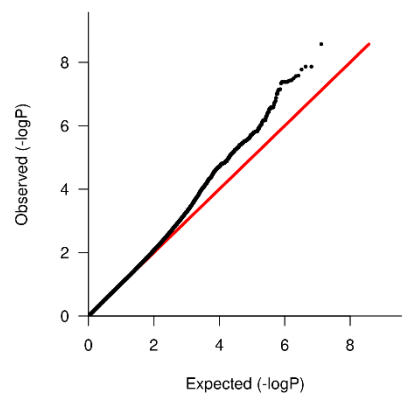
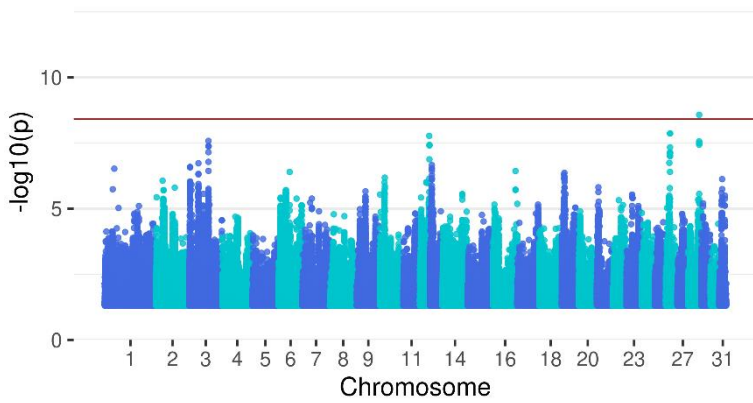
$\lambda = 0.958$

Rotation in the hock [marked rotation]



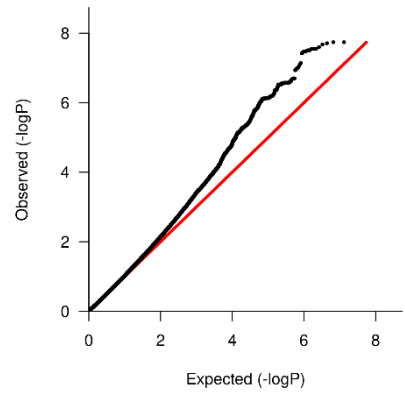
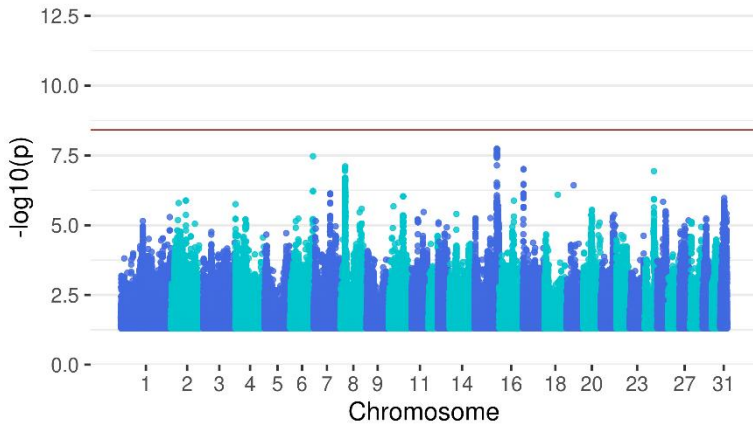
$\lambda = 1.017$

Tail position [markedly off-center]



$\lambda = 1.046$

Tail tone [un-toned - over-toned]



$\lambda = 1.008$