



**HAL**  
open science

## Effect of muscle length on maximum evoked torque, discomfort, contraction fatigue, and strength adaptations during electrical stimulation in adult populations: A systematic review

Jonathan Galvão Tenório Cavalcante, Victor Hugo de Souza Ribeiro, Rita de Cássia Marqueti, Isabel de Almeida Paz, Júlia Aguillar Ivo Bastos, Marco Aurélio Vaz, Nicolas Babault, João Luiz Quagliotti Durigan

### ► To cite this version:

Jonathan Galvão Tenório Cavalcante, Victor Hugo de Souza Ribeiro, Rita de Cássia Marqueti, Isabel de Almeida Paz, Júlia Aguillar Ivo Bastos, et al.. Effect of muscle length on maximum evoked torque, discomfort, contraction fatigue, and strength adaptations during electrical stimulation in adult populations: A systematic review. PLoS ONE, 2024, 19 (6), pp.e0304205. 10.1371/journal.pone.0304205 . hal-04612806

HAL Id: hal-04612806

<https://hal.science/hal-04612806v1>

Submitted on 14 Jun 2024

**HAL** is a multi-disciplinary open access archive for the deposit and dissemination of scientific research documents, whether they are published or not. The documents may come from teaching and research institutions in France or abroad, or from public or private research centers.

L'archive ouverte pluridisciplinaire **HAL**, est destinée au dépôt et à la diffusion de documents scientifiques de niveau recherche, publiés ou non, émanant des établissements d'enseignement et de recherche français ou étrangers, des laboratoires publics ou privés.



Distributed under a Creative Commons Attribution 4.0 International License

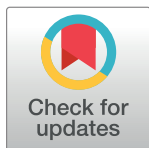
## RESEARCH ARTICLE

# Effect of muscle length on maximum evoked torque, discomfort, contraction fatigue, and strength adaptations during electrical stimulation in adult populations: A systematic review

Jonathan Galvão Tenório Cavalcante<sup>1</sup>, Victor Hugo de Souza Ribeiro<sup>2</sup>, Rita de Cássia Marqueti<sup>3</sup>, Isabel de Almeida Paz<sup>4</sup>, Júlia Aguillar Ivo Bastos<sup>2</sup>, Marco Aurélio Vaz<sup>4</sup>, Nicolas Babault<sup>5</sup>, João Luiz Quagliotti Durigan<sup>1,2\*</sup>

**1** Laboratory of Muscle and Tendon Plasticity, Graduate Program of Physical Education, University of Brasília, Brasília, Distrito Federal, Brazil, **2** Laboratory of Muscle and Tendon Plasticity, Graduate Program of Rehabilitation Sciences, University of Brasília, Brasília, Distrito Federal, Brazil, **3** Molecular Analysis Laboratory, Graduate Program of Rehabilitation Sciences, University of Brasília, Brasília, Distrito Federal, Brazil, **4** Exercise Research Laboratory, School of Physical Education, Physical Therapy and Dance, Federal University of Rio Grande do Sul, Porto Alegre, RS, Brazil, **5** Centre d'Expertise de la Performance, INSERM UMR1093-CAPS, UFR des Sciences du Sport, University of Burgundy Franche-Comté, Besançon, Dijon, France

\* [durigan@unb.br](mailto:durigan@unb.br)



## OPEN ACCESS

**Citation:** Cavalcante JGT, Ribeiro VHdS, Marqueti RdC, Paz IdA, Bastos JAI, Vaz MA, et al. (2024) Effect of muscle length on maximum evoked torque, discomfort, contraction fatigue, and strength adaptations during electrical stimulation in adult populations: A systematic review. PLoS ONE 19(6): e0304205. <https://doi.org/10.1371/journal.pone.0304205>

**Editor:** Theodoros M. Bampouras, Liverpool John Moores University, UNITED KINGDOM

**Received:** November 5, 2023

**Accepted:** May 8, 2024

**Published:** June 10, 2024

**Peer Review History:** PLOS recognizes the benefits of transparency in the peer review process; therefore, we enable the publication of all of the content of peer review and author responses alongside final, published articles. The editorial history of this article is available here: <https://doi.org/10.1371/journal.pone.0304205>

**Copyright:** © 2024 Cavalcante et al. This is an open access article distributed under the terms of the [Creative Commons Attribution License](https://creativecommons.org/licenses/by/4.0/), which permits unrestricted use, distribution, and reproduction in any medium, provided the original author and source are credited.

## Abstract

Neuromuscular electrical stimulation (NMES) can improve physical function in different populations. NMES-related outcomes may be influenced by muscle length (i.e., joint angle), a modulator of the force generation capacity of muscle fibers. Nevertheless, to date, there is no comprehensive synthesis of the available scientific evidence regarding the optimal joint angle for maximizing the effectiveness of NMES. We performed a systematic review to investigate the effect of muscle length on NMES-induced torque, discomfort, contraction fatigue, and strength training adaptations in healthy and clinical adult populations (PROSPERO: CRD42022332965). We conducted searches across seven electronic databases: PUBMED, Web of Science, EMBASE, PEDro, BIREME, SCIELO, and Cochrane, over the period from June 2022 to October 2023, without restricting the publication year. We included cross-sectional and longitudinal studies that used NMES as an intervention or assessment tool for comparing muscle lengths in adult populations. We excluded studies on vocalization, respiratory, or pelvic floor muscles. Data extraction was performed via a standardized form to gather information on participants, interventions, and outcomes. Risk of bias was assessed using the Revised Cochrane risk-of-bias tool for cross-over trials and the Physiotherapy Evidence Database scale. Out of the 1185 articles retrieved through our search strategy, we included 36 studies in our analysis, that included 448 healthy young participants (age: 19–40 years) in order to investigate maximum evoked torque ( $n = 268$ ), contraction fatigability ( $n = 87$ ), discomfort ( $n = 82$ ), and muscle strengthening ( $n = 22$ ), as well as six participants with spinal cord injuries, and 15 healthy older participants. Meta-analyses

**Data Availability Statement:** All relevant data are within the manuscript and its [Supporting Information](#) files.

**Funding:** J.G.T.C received a grant by Fundação de Apoio à Pesquisa do Distrito Federal (FAPDF) (grant number 00193-00001615/2023-00) for paying english language review and publication fee for the present study. FAPDF is a public research support foundation. <https://www.fap.df.gov.br/>.

**Competing interests:** The authors have declared that no competing interests exist.

were possible for comparing maximal evoked torque according to quadriceps muscle length through knee joint angle. At optimal muscle length 50° - 70° of knee flexion, where 0° is full extension), there was greater evoked torque during nerve stimulation compared to very short (0 – 30°) ( $p < 0.001$ , CI 95%: -2.03, -1.15 for muscle belly stimulation, and -3.54, -1.16 for femoral nerve stimulation), short (31° - 49°) ( $p = 0.007$ , CI 95%: -1.58, -0.25), and long (71° - 90°) ( $p < 0.001$ , CI 95%: 0.29, 1.02) muscle lengths. At long muscle lengths, NMES evoked greater torque than very short ( $p < 0.001$ , CI 95%: -2.50, -0.67) and short ( $p = 0.04$ , CI 95%: -2.22, -0.06) lengths. The shortest quadriceps length generated the highest perceived discomfort for a given current amplitude. The amount of contraction fatigability was greater when muscle length allowed greater torque generation in the pre-fatigue condition. Strength gains were greater for a protocol at the optimal muscle length than for short muscle length. The quality of evidence was very high for most comparisons for evoked torque. However, further studies are necessary to achieve certainty for the other outcomes. Optimal muscle length should be considered the primary choice during NMES interventions, as it promotes higher levels of force production and may facilitate the preservation/gain in muscle force and mass, with reduced discomfort. However, a longer than optimal muscle length may also be used, due to possible muscle lengthening at high evoked tension. Thorough understanding of these physiological principles is imperative for the appropriate prescription of NMES for healthy and clinical populations.

## Introduction

Neuromuscular electrical stimulation (NMES) can improve neuromuscular function in different populations [1–3]. NMES-related outcomes may be influenced by several parameters, such as device-derived parameters (e.g., current type, current amplitude, stimulation frequency, pulse duration) [3–8], the device-human interface (e.g., electrode type, size, and configuration; nerve or muscle stimulation) [9,10], and human-derived parameters (e.g., type of contraction, target muscle, muscle-tendon unit length, health status) [11–17]. These factors should interact to produce greater evoked force, and speed up strengthening/hypertrophy while attenuating the perceived discomfort and contraction fatigability. Accordingly, muscle length is a widely recognized modulator of the force generation capacity of muscle fibers and the stimulus for strengthening and hypertrophy when it comes to voluntary exercise [18–20]. As such, the optimal muscle length for NMES, would be at the plateau region of the force-length relationship, obtained by manipulating joint angle [21–23]. However, to date, there are no summaries of the scientific data on how the NMES effects can be optimized by the “best joint angle”, which may limit standardization of NMES-based programs and novel approaches to improve performance during NMES delivery, in addition to the long-term results.

The muscle force-length relationship of single muscle fibers *in vitro* is classically known to display an ascending and a descending limb, with a plateau in between, where the maximal tension is achieved [21], also supported by recent research [24]. *In vivo*, the joint angle-torque relationship becomes the practical translation of the force-length relationship for assessing human performance, taking into account that different moment arms, muscle-tendon unit architecture, and joint characteristics yield different shapes of the torque curve as the joint angle changes [11,15,22,25]. As such, the early study by Marsh et al. [26] brings relevant data showing the different shapes of the torque-angle relationship of the dorsiflexors according to

the type of activation (maximal voluntary contraction [MVC] or stimulated at different frequencies). However, while the dorsiflexors may show progressively greater evoked torque as the ankle angle moves towards plantar flexion [26], for the quadriceps muscle, the torque is usually greater closer to 60° of knee flexion [16], and for the biceps brachialis, the torque is usually greater close to 90° of elbow flexion [25]. These discrepancies in the torque-angle relationship for different joints reveal that this branch of knowledge must be broadened (for more joint angles and joint types) and systematically compiled so that researchers and clinicians can make evidence-based decisions when prescribing NMES.

When applying NMES, it is essential not only to consider torque generation but also to minimize the level of perceived discomfort. Forceful contractions at short muscle lengths (e.g., extended knee for knee extensor stimulation) can cause painful muscle cramps [1,27]. Therefore, during the application of NMES, in addition to biomechanical considerations, alterations in muscle length may contribute to varying levels of perceived discomfort. Thus, whenever possible, it is recommended that the NMES training be started at the 'ideal' muscle length (i.e., the joint angle that allows the greatest evoked torque generation) and that it subsequently progresses to isometric evoked contractions at longer muscle lengths. Despite the absence of evidence indicating that this approach diminishes discomfort during NMES sessions, it may mitigate the heightened risk of early muscle damage associated with training at longer muscle lengths [6,28].

A previous study found that NMES-induced quadriceps fatigability, i.e., the reduction in force generating capacity [29], depends on muscle length changes due to hip and knee joint angles [14], where fatigue is greater at a knee flexion of 60° compared to 20°. In the case of a 60° knee flexion, a supine position leads to earlier fatigue, which means greater performance fatigability [30], while with a 20° knee flexion, a supine position delays fatigue (here defined as a decline in an objective measure of performance over a discrete period of time) [11,30]. It has also been claimed that NMES at a shortened position (full knee extension) for strengthening the quadriceps promotes greater joint soft tissue protection after anterior cruciate ligament repair [31]. However, according to the authors, the strength gains observed were lower than expected, considering previous studies that used a knee flexion angle of 60° [31,32]. These results corroborate those of a pioneering study [33] that reported a greater strengthening effect for an elongated position (65° of knee flexion) compared to a shortened position (full knee extension). While abundant and emerging data exist to address the influence of muscle length on the benefits of NMES training programs, to date, no systematic reviews have identified the optimal muscle lengths for the generation of higher evoked torque with lower discomfort and contraction fatigability, and a greater strengthening/hypertrophy effect during NMES rehabilitation and training programs.

The current review, therefore, was developed to summarize the research comparing different muscle length settings during NMES, following the Cochrane collaboration recommendations [34] to assess the effects of these interventions on outcomes important for NMES-based programs. Specifically, we compared the effects of muscle length on NMES-evoked isometric torque, contraction fatigability, discomfort, and strength training adaptations in healthy and clinical adult populations. We hypothesized that the optimal muscle length, according to the preferable joint angle for maximum force development, would induce greater contraction fatigue, mainly due to the greater absolute muscle force (and torque) in the fresh (pre-fatigue) state. We also hypothesized that the discomfort would be lower at the optimal muscle length during NMES contractions. Finally, we hypothesized that strength gains would be more pronounced at the optimal muscle length, while greater hypertrophy could potentially be attained through more elongated positions in comparison to the optimal muscle length.

## Material and methods

This systematic review followed the recommendations proposed by the Cochrane Collaboration and the Preferred Reporting Items for Systematic Reviews and Meta-Analyses Statement (PRISMA) [34,35], and was registered at PROSPERO (CRD42022332965). [S1 File](#).

### Search strategy

We searched seven electronic databases: PUBMED, Web Of Science, EMBASE, PEDro, BIREME, SCIELO, and Cochrane, from June 2022 to October 2023. The search strategy was established following the PICO strategy (Population, Intervention, Control, Outcome) for any adult population ( $\geq 18$  years old, healthy or clinical) submitted to electrical stimulation applied at different muscle lengths (according to joint angle) and that evaluated its effects on maximum evoked torque, contraction fatigability, perceived discomfort, or strength training adaptations.

We used the following descriptors in our search strategy, without restrictions on language or date of publication: “healthy”, “adults”, “participants”, “volunteers”. “muscle weakness”, “muscle atrophy”, “cachexia”, “elderly”, “muscle diseases”, “muscle paralysis”, “Parkinson”, “neuromuscular disease”, “stroke”, “multiple sclerosis”, “anterior cruciate ligament reconstruction”, “chronic obstructive pulmonary disease”, “lung disease”, “cardiac disease”, “obese”, “vascular disease”, “diabetes”, “orthopedic patients”, “nephrology patients”, “electric stimulation”, “functional electrical stimulation”, “neuromuscular electrical stimulation”, “muscle length”, “joint angle”, “joint position”, “torque”, “force”, “fatigue”, “discomfort”, “pain”. The searches were adapted for each database to identify all relevant articles. Additional articles were screened in the reference lists of included studies. The search strategy for each database is described in [S2 File](#). The grey literature (available literature not published under a rigorous, peer-reviewed, independent scientific review system) was not searched, in order to avoid introducing bias and low-quality designs that could reduce the validity of our results.

The inclusion criteria were: i) cross-sectional, repeated measures, or randomized controlled trials; ii) comparisons of different muscle lengths (i.e., joint angles) during or after electrically induced muscle contraction as an intervention to generate maximum torque, contraction fatigability, perceived discomfort, or strength training adaptations; iii) healthy or clinical adult populations ( $\geq 18$  years old). Studies were excluded if they investigated the vocalization, respiratory, or pelvic floor muscles.

### Data extraction

Two researchers (J.G.T.C and V.H.R) independently evaluated the titles of all articles found using the search strategy. If the title was clearly on a topic not relevant for the present review, the article was excluded. In the case of uncertainty, the article was selected for abstract reading, along with those that could possibly be included. The same procedure was performed during abstract reading, i.e., studies whose abstracts did not provide sufficient information regarding the inclusion and exclusion criteria were selected for full-text evaluation. Disagreements among reviewers were resolved by consensus, and if conflict persisted, a third reviewer (J.L.Q. D.) was consulted. The data extraction was performed independently by the same two reviewers via a standardized form to gather information on participants (health status, age, anthropometrics), interventions (joint angle comparisons, electrode characteristics and placement, electrical current parameters), and outcomes. No automation tools were used.

For meta-analyses, when multiple data were available for maximum evoked torque measurements, we always chose the data expected to produce greater torque (e.g., doublet instead of twitch-evoked torque, or 50 Hz instead of 20 Hz of stimulation frequency), and we always

chosedata not explicitly affected by previous stimulus (e.g., non-potentiated instead of potentiated). For contraction fatigue, we were interested in the evoked torque decline during a fatiguing protocol, as well as the evoked and or voluntary torque obtained before and after the fatiguing protocol. When the study results were only available in graphs, we extracted the data using ImageJ software (v. 1.46; National Institutes of Health, Bethesda, Maryland, USA).

### Risk of bias assessment

Risk of bias was assessed using the Revised Cochrane risk-of-bias tool for cross-over trials (RoB-CO) and the Physiotherapy Evidence Database (PEDro) scale. The RoB-CO assesses six domains: Bias arising from the randomization process; Bias arising from period and carryover effects; Bias due to deviations from intended intervention; Bias due to missing outcome data; Bias in measurement of the outcome; and Bias in selection of the reported result. The PEDro scale contains 11 items that involve: 1) eligibility criteria (not used to calculate score); 2) random allocation; 3) concealed allocation; 4) baseline comparability; 5) blinded subjects; 6) blinded therapists; 7) blinded assessors; 8) adequate follow-up; 9) intention-to-treat analysis; 10) between-group statistical comparisons; 11) point estimate and variability. Each item was marked as "yes (1/0)" or "no (0/0)" and scored on a 0 to 10 scale.

### Quality of evidence

The Grading of Recommendations, Assessment, Development, and Evaluation (GRADE) was used to assess the overall quality of evidence. The GRADE contains 5 domains: Study design and risk of bias; Inconsistency; Indirectness; Imprecision; and Other factors (e.g., reporting bias, publication bias). Regarding classification, high-quality of evidence means consistent results in at least 75% of the clinical trials of good methodological quality, presenting consistent, direct, and precise data, with no suspicious or known publication bias, and further research is unlikely to alter the estimate or the confidence in the results. Moderate quality of evidence means that at least one domain is not met, and new research is likely to significantly impact the confidence in the effect estimate. Low-quality evidence means that two of the domains are not met, and further research is expected to significantly impact the confidence in the effect estimate and is likely to alter the estimate. Very low-quality evidence means that three domains are not met, and the results are highly uncertain [36].

### Data analysis

Meta-analyses were performed using Software Review Manager 5.4.1 (The Cochrane Collaboration) if the available data were sufficient and at least two studies could be fairly compared, i.e., by matching the main characteristics: population, muscle involved, and muscle length. Considering these basic rules, there was compatibility for meta-analyses only for the evoked torque, and not for perceived discomfort, contraction fatigue, and strength training adaptations. The continuous values (mean and standard deviation) of maximum evoked torque, and the number of participants for each group comparison were extracted to estimate the standardized mean difference (SMD) of the intervention and its 95% confidence interval (CI) using a random-effects model with inverse variance as a statistical method. The test for overall effect (Z-test) provided the p-value. The level of significance was set at  $p < 0.05$ .

The reference to joint angle in the included studies can change; for example, the full knee extension is more commonly cited as  $0^\circ$ , although it may also be considered as  $180^\circ$ . Therefore, we defined full extension as  $0^\circ$  for the knee and hip joints. When discussing other joints, we provide the reference angle as needed. To enhance study compatibility for meta-analysis, we categorized the quadriceps muscle length (with a fixed hip angle set between  $70^\circ$  and  $90^\circ$ )



based on the knee angle, as follows: very short ( $0^{\circ}$  -  $30^{\circ}$ ), short ( $31^{\circ}$  -  $49^{\circ}$ ), optimal ( $50^{\circ}$  -  $70^{\circ}$ ), long ( $71^{\circ}$  -  $90^{\circ}$ ), and very long ( $> 90^{\circ}$ ). Most studies used round numbers to specify knee joint angles, although some studies involving the ankle and elbow joints employed specific angles (e.g.,  $16^{\circ}$ ,  $48^{\circ}$ ,  $104^{\circ}$ ) [25,37].

A gold standard for classifying quadriceps muscle length is currently lacking. However, a range between  $50^{\circ}$  and  $70^{\circ}$ , with  $60^{\circ}$  being the common midpoint, may be considered as optimal or intermediate length [38–41]. The terms 'short' and 'long' are typically defined within the context of the specific joint angles being compared. For instance, Skurvydas et al. [42] defined 'short' as a knee flexion angle of  $50^{\circ}$  and 'long' as  $90^{\circ}$ , while Place et al. [43] used 'short' for  $35^{\circ}$  and 'long' for  $75^{\circ}$  of knee flexion. In contrast, Rassier [39] described 'optimal' as  $60^{\circ}$ , 'shorter than optimal' as  $30^{\circ}$ , and 'longer than optimal' as  $90^{\circ}$ . When performing a meta-analysis, we ensured that the stimulated muscles, participant groups (comprising healthy young individuals), and methodology for torque generation (nerve or motor point stimulation) were consistent across the studies.

## Results

### Search findings

Our search strategy retrieved 1185 records. After removing 277 duplicates and 82 clinical trial registries, 826 studies were screened, together with six additional studies: one study found on a reference list [44], two found through a manual search on Google [45,46], two published by some of the authors of this systematic review [14,38], and one provided by an author upon request [47], totaling 832 for title screening. Titles that were not eligible were excluded ( $n = 761$ ). Thereafter, 71 studies were screened through the abstracts, with 42 studies remaining for full-text screening. After full-text reading, six studies were excluded; one standardized the same percentage of MVC during evoked torque (not allowing any comparison of maximum evoked torque), one did not assess isometric torque (torque values were obtained as the knee was moved through a range of motion that was not stated), one did not specify joint angles, one did not show any result that could allow joint angle/muscle length comparison, one contained the same variable and sample of another study by the same authors, and one was in the Japanese language. Consequently, the current review includes a total of 36 studies. The PRISMA flowchart of study identification and selection is presented in Fig 1.

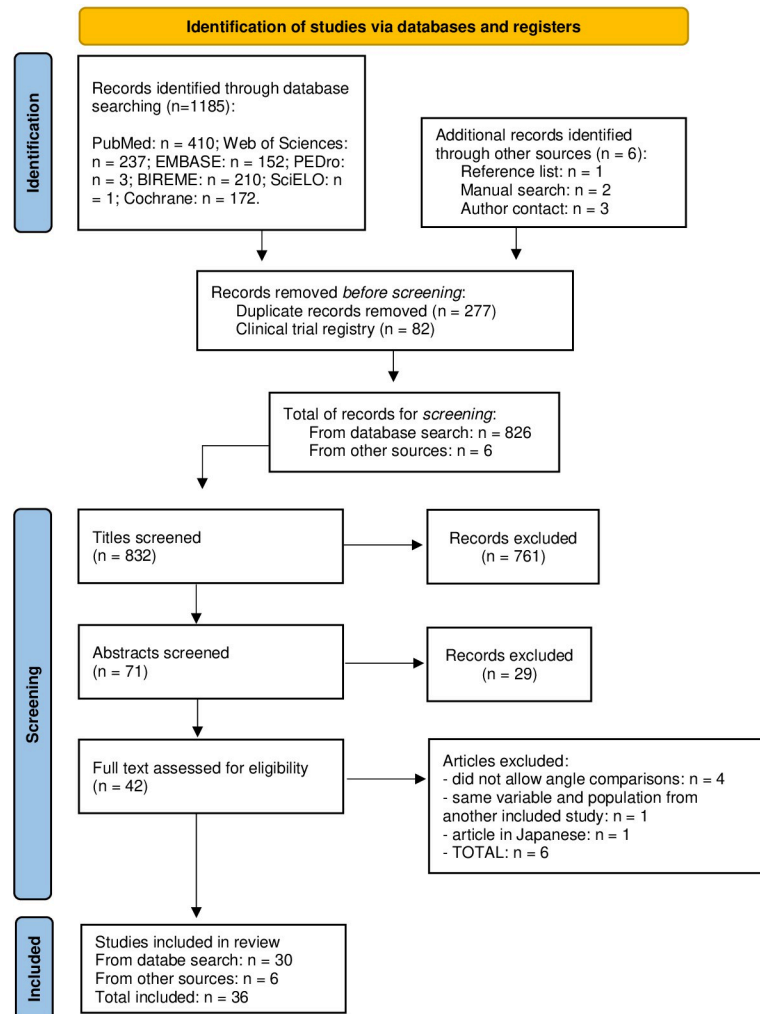
### Quality of evidence

The results of the RoB-CO assessment can be found in S3 File. In brief, none of the studies exhibited bias resulting from deviations in the intended intervention, missing outcome data, outcome measurement issues, or selective result reporting. While one study drew attention to potential carryover effects, three studies did not provide clear reporting on their randomization process. Moreover, ten studies raised concerns as they presented a high risk or potential issues related to carryover effects. The GRADE assessments are provided along with the description of the meta-analyses results.

The results of the PEDro scale are shown in Table 1. Three studies scored '7', 22 studies scored '6', eight studies scored '5', and three studies scored '4'.

### Main characteristics of the included studies

Table 2 outlines the key characteristics of the studies included in our analysis. The studies were published between 1981 and 2022, written in English, and were categorized as employing a repeated measure design (crossover), randomized clinical trial, or self-control (where opposite



**Fig 1. Flowchart for identifying and selecting articles for final inclusion (based on the Prisma flowchart template).**

<https://doi.org/10.1371/journal.pone.0304205.g001>

limbs were compared) approach. A total of 448 healthy young participants, ranging in age from 19 to 40 years, were enrolled across these studies. Their contributions were aimed at assessing various aspects, including maximum evoked torque ( $n = 268$ ), contraction fatigability ( $n = 87$ ), discomfort ( $n = 82$ ), and muscle strengthening ( $n = 22$ ). Moreover, six patients with spinal cord injuries were included and paired with an able-bodied sample [16], and one study dealt only with a healthy older sample of 15 participants [48]. In addition, 23 studies reported a measure of maximal electrically induced torque (peak twitch, supramaximal triplet stimulation, tetanic torque, or evoked torque), eight studies applied an NMES-fatiguing protocol, five studies reported the perceived discomfort, one study assessed strength gains [33], and two studies assessed other strength outcomes (without reporting only torque): the rate of torque development [49] and the extra forces with preceding activity, i.e., NMES-induced contractions through central pathways that lead to an increase in force increments that is disproportionate to the input/electrical current applied [50]. In this case, a 25 Hz-10 0Hz-25 Hz stimulation was applied at different ankle joints and the ratio of the torque generated in the second over the first 25 Hz stimuli was calculated.



Table 1. Methodological quality of the included articles (PEDro scale).

Author (Year)	Random allocation	Concealed allocation	Similar groups baseline	Subject blinding	Therapist blinding	Assessor blinding	Adequate follow-up	Intention-to-treat analysis	Between-group comparisons	Point estimate & variability	Total
Cavalcante et al., 2022 [14]	Y	Y	Y	Y	N	N	Y	N	Y	Y	7
Cavalcante et al., 2021 [11]	Y	Y	Y	Y	N	N	Y	N	Y	Y	7
Harnie et al., 2020 [57]	Y	Y	Y	N	N	N	Y	N	Y	Y	6
Hali et al., 2021 [74]	Y	Y	Y	N	N	N	N	N	Y	Y	5
Fouré et al., 2020 [28]	Y	Y	Y	N	N	N	N	N	Y	Y	5
Debenham & Power, 2019 [49]	N	N	Y	N	N	N	Y	N	Y	Y	4
Scott et al., 2019 [53]	Y	Y	Y	Y	N	N	Y	N	Y	Y	7
Gavin et al., 2018 [48]	Y	Y	Y	N	N	N	Y	N	Y	Y	6
Merlet et al., 2018 [76]	Y	Y	Y	N	N	N	Y	N	Y	Y	6
Yanase et al., 2017 [62]	Y	Y	Y	N	N	N	Y	N	Y	Y	6
Visscher et al., 2017 [71]	Y	Y	Y	N	N	N	Y	N	Y	Y	6
Bampouras et al., 2017 [65]	Y	Y	Y	N	N	N	N	N	Y	Y	5
Ando et al., 2018 [58]	Y	Y	Y	N	N	N	Y	N	Y	Y	6
Bremner et al., 2015a [45]	Y	Y	Y	N	N	N	Y	N	Y	Y	6
Bremner et al., 2015b [47]	Y	Y	Y	N	N	N	Y	N	Y	Y	6
Frigon et al., 2011 [50]	Y	Y	Y	N	N	N	Y	N	Y	Y	6
Skurvydas et al., 2010 [42]	Y	Y	Y	N	N	N	N	N	Y	Y	5
Marion et al., 2009 [60]	Y	Y	Y	N	N	N	Y	N	Y	Y	6
Ruiter et al., 2008 [52]	Y	Y	Y	N	N	N	Y	N	Y	Y	6
Kooistra et al., 2007 [54]	Y	Y	Y	N	N	N	Y	N	Y	Y	6
Lee et al., 2007 [59]	Y	Y	Y	N	N	N	Y	N	Y	Y	6
Gerrits et al., 2005 [16]	Y	Y	Y	N	N	N	Y	N	Y	Y	6
Miyamoto & Oda, 2005 [78]	Y	Y	Y	N	N	N	N	N	Y	Y	5

(Continued)

Table 1. (Continued)

Author (Year)	Random allocation	Concealed allocation	Similar groups baseline	Subject blinding	Therapist blinding	Assessor blinding	Adequate follow-up	Intention-to-treat analysis	Between-group comparisons	Point estimate & variability	Total
Kooistra et al., 2005 [56]	Y	Y	Y	N	N	N	N	N	Y	Y	5
Place et al., 2005 [43]	Y	Y	Y	N	N	N	Y	N	Y	Y	6
Ruiter et al., 2004 [55]	Y	Y	Y	N	N	N	Y	N	Y	Y	6
Babault et al., 2003 [38]	Y	Y	Y	N	N	N	Y	N	Y	Y	6
Maffiuletti et al., 2003 [72]	Y	Y	Y	N	N	N	Y	N	Y	Y	6
Hansen et al., 2003 [25]	Y	Y	Y	N	N	N	N	N	Y	Y	5
Mela et al., 2001 [37]	Y	Y	Y	N	N	N	N	N	Y	Y	5
Rassier, 2000 [39]	Y	Y	Y	N	N	N	Y	N	Y	Y	6
Sacco et al., 1994 [61]	N	N	Y	N	N	N	Y	N	Y	Y	4
McNeal & Bake, 1988 [46]	N	N	Y	N	N	N	Y	N	Y	Y	4
Fitch & McComas, 1985 [44]	Y	Y	Y	N	N	N	Y	N	Y	Y	6
Fahey et al., 1985 [33]	Y	Y	Y	N	N	N	Y	N	Y	Y	6
Marsh et al., 1981 [26]	Y	Y	Y	N	N	N	Y	N	Y	Y	6

Y and grey marked: Yes; N and White marked: No.

<https://doi.org/10.1371/journal.pone.0304205.t001>

### Physical parameters of the electrical stimulation protocols

All parameters used in the interventions are presented in Table 3. The current type and waveform were generally not fully described, and only two studies reported both parameters. Pulse duration ranged between 50 and 1000  $\mu$ s, although 2 studies did not report pulse duration. When a tetanic contraction was applied in the evaluation and/or intervention, studies ( $n = 4$ ) used stimulation ranging from 75 Hz to 300 Hz, with a pulse duration ranging from 200  $\mu$ s to 600  $\mu$ s. The exceptions were the two studies by Bremner et al. [45,47] that used a median frequency current (2500 Hz delivered in bursts of 50 Hz, also known as Russian current).

The stimulated muscles and joint angles are presented in Table 2. The quadriceps femoris muscle was the most commonly studied muscle, followed by the ankle plantar flexors and dorsiflexors, and the elbow flexors. Only one study investigated the external rotators (infraspinatus) of the shoulder.

### Evoked torque

Meta-analyses were only possible for this outcome. In total, 23 studies reported a measure of maximum evoked contraction through motor point stimulation (tetanic contraction or twitch)

Table 2. Characteristics of the included studies.

Authors	Sample Size/ % male	Sample Characteristics	Electrode number (size), and type	Electrode Positions	Joint angles	Outcomes
Cavalcante et al., 2022 [14]	20/100%	Healthy; age: 24±4.6 y; body mass: 77±9.3 kg; height: 177.6±6.3 cm	4 (5x5 cm) self-adhesive	Right quadriceps muscle bellies	Hip: 0° or 85° Knee: 20° or 60°	Contraction fatigue
Cavalcante et al., 2021 [11]	20/100%	Healthy; age: 24±4.6 y; body mass: 77±9.3 kg; height: 177.6±6.3 cm	4 (5x5 cm) self-adhesive	Right quadriceps muscle bellies	Hip: 0° or 85° Knee: 20° or 60°	Evoked torque Discomfort
Harnie et al., 2020 [57]	32/72%	Healthy; age: 22.1±3.2 y; body mass: 67.5±10.3 kg; height: 174.7±8.2 cm	cathode (0.5 cm diameter) 1 (5x9 cm)	Right leg; femoral triangle, 3–5 cm below the inguinal ligament and gluteal fold	Hip: Knee: 90° or 30°	Peak twitch torque
Hali et al., 2021 [74]	10/100%	Healthy; age: 24±3 y; weight: 81±7 kg; height: 181±5 cm	Not informed	Non-dominant leg (left), tibial nerve	Hip: 90° Knee: 90° Ankle: 20° DF or 20° PF	Peak twitch torque
Fouré et al., 2020 [28]	10/60%	Healthy; age: 27±4 y; body mass: 63.5±9.2 kg; height: 173±10 cm	1 (5x10 cm) 2 (5x5 cm)	Proximal thigh: ~5cm below inguinal ligament) VL and VM muscle bellies	Hip: ~90° Knee: 50° or 100°	Contraction fatigue
Debenham & Power, 2019 [49]	8/100%	Healthy; 24 ± 3 y; body mass: 72±11kg; height: 177±9 cm	Anode: ECG electrode Cathode: (6–8x8–10 cm) aluminum electrode pad wrapped in a damp paper towel covered in conductive gel	Anode: inguinal triangle Cathode: inferior gluteal fold.	Hip: Not informed Knee: 35° and 100°	Rate of Torque Development
Scott et al., 2019 [53]	18/50%	Healthy; age: 24.7±5.9 y; body mass: 78.5±13.2 kg; height: 173.3±11 cm	2 (7.62x12.7 cm)	Right proximal and distal quadriceps muscles	Hip: Seated Knee: 30, 60 or 90	Evoked torque
Gavin et al., 2018 [48]	15/46.7%	Healthy old; 66 ± 8 y; body mass: 73.0 ± 7.6; height: 168.3 ± 8.2 cm	Single device	Common peroneal nerve (muscles: peroneus longus and tibialis anterior)	Hip: ~90° Knee: 0°, 45°, 90°	Discomfort
Merlet et al., 2018 [76]	12/58%	Healthy; age: 22.5±1.2 y; body mass: 63.5±9.2 kg; height: 172.5±9.7 cm	1 (1.0 cm diameter) 1 (5x10 cm)	Right posterior tibial nerve	Hip: 70° Knee: 0°, 30°, 90° ankle: 90°	Peak twitch torque
Yanase et al., 2017 [62]	40/100%	Healthy; age 24.4 ± 3.6 y; body mass: 67.3 ± 7.6; height: 172.1 ± 5.6 cm	Bipolar electrodes, 5x5 cm	Right or left shoulder; one electrode over the motor point of the infraspinatus, other over the muscle belly.	Maximal internal rotation (IR; 82.5° ± 9.6°); neutral rotation (NEUT); max external rotation (ER; 86.1° ± 13.5°),	Muscle swelling and soreness
Visscher et al., 2017 [71]	16/100%	Healthy; age: 26±4 y; body mass: 78±6 kg; height: 182±5 cm	1 (5 cm diameter) 1 (5x10 cm)	Femoral nerve trunk (individual muscle belly stimulation omitted)	Hip: 90° Knee: 30°, 65°, 90°	Peak twitch torque
Bampouras et al., 2017 [65]	9/100%	Healthy; age: 30.2±7.7 y; body mass: 81.7±11.2 kg; height: 178±0.09 cm	2 (7x12.5 cm)	Proximal and distal regions of the quadriceps muscle group with the cathode being the proximal electrode.	Hip: 90° or 160° Knee: 90°	Tetanic torque
Ando et al., 2018 [58]	8/100%	Healthy; age: 24±2 y; body mass: 63.5±9.2 kg; height: 172.5±9.7 cm	1 cathode (2.0x3.5 cm) and 2 anodes (7x10 cm)	Femoral nerve	Hips: 70° of flexion (0° is anatomical position) Knee: 60° (extended) and 110° (flexed)	Contraction fatigue
Bremner et al., 2015a [45]	16/0%	Healthy; age: 21.5±2.4 y; body mass: 67.7±7.7 kg; height: 162.4±5.3 cm	4 (5x9 cm)	Right leg; electrodes were placed over the femoral nerve and the motor points of each of the superficial quadriceps muscles	Hip: 85° Knee: 15° or 60°	Normalized peak torque

(Continued)

Table 2. (Continued)

Authors	Sample Size/ % male	Sample Characteristics	Electrode number (size), and type	Electrode Positions	Joint angles	Outcomes
Bremner et al., 2015b [47]	20/50%	Healthy; age: 21.3 ± 2.1 y; body mass: 75.6 ± 15.3; height: 167.4 ± 8.5 cm	4 (5x9 cm)	Over the proximal and distal VL, proximal RF, and distal VM motor points.	Hip: 85° Knee: 15° or 60°	Discomfort
Frigon et al., 2011 [50]	14/64.28%	Healthy; no other data available	TA: 5 cm, rounded; GM: 7x13 cm	Proximal and distal TA; and proximal and distal GM	Hip: 90° Knee: 170 – 180° (full extension) Ankle:	Extra forces
Skurvydas et al., 2010 [42]	11/100%	Healthy; 24.8 ± 3.7 y; body mass: 78.2 ± 4.7kg; height: 179.9 ± 3.6 cm	2 carbonized rubber electrodes covered gel: 6x11 cm (proximal) and 6x20 cm (distal)	Right quadriceps; transversely across the width of the proximal and the distal portion of the quadriceps.	Hip: seated Knee: not informed Ankle: 9° dorsiflexion, 16° plantar flexion, and 44° plantar flexion	Evoked torque
Marion et al., 2009 [60]	8/70%	Healthy; age: 28.2±3.63 y	2 (7.5x12.5 cm)	Right quadriceps muscle	Hips: 15° Knee: 20°, 40°, 65°, and 90°	Contraction fatigue
Ruiter et al., 2008 [52]	10/100%	Healthy; age: 26.0±7.1 y; body mass: 73.0±5.2 kg; height: 181.9±8.3 cm	Cathode: 5x5 cm Anode: 13x8 cm	Cathode: femoral nerve Anode: gluteal fold	Hip: 70° Knee: 30°, 60°, 90°	Triplet torque
Kooistra et al., 2007 [54]	7/100%	Healthy; age: 23–32 y; body mass: 69–83 kg; height: 173–193 cm	Cathode: 5x5 cm Anode: 13x8 cm	Cathode: femoral nerve Anode: gluteal fold	Hip: 70° Knee: 30°, 60°, 90°	Triplet torque
Lee et al., 2007 [59]	5/60%	Healthy; age: 22.5±1.2 y; body mass: 70.2±12 kg; height: 172.9±7.3	-	Right quadriceps muscle	Hips: 75° of flexion Knee: 15° and 90°	Contraction fatigue
Gerrits et al., 2005 [16]	8/-	Healthy; age: 37±4 y; body mass: 78±3 kg; height: 183±2 cm	1 (5x5 cm) 1 (8x13 cm)	Femoral nerve (cathode) and medial part of the quadriceps muscle (anode)	Hip: 70° Knee: 30 to 90 (10° step)	Triplet torque
Miyamoto & Oda, 2005 [78]	9/100%	Healthy; age: 24.5±1.1 y; body mass: 68.1±2.6 kg; height: 171.3±2.8 cm	Carbon-impregnated rubber electrodes (3.5x2 cm) with conductive gel and secured to the right upper arm with adhesive tape.	One electrode was placed on the motor point of the biceps brachii, and the other was placed on the distal portion of the biceps brachii.	Elbow: 75, 90, 105, 120, 135, and 150 (full extension = 180).	30 Hz Tetanic torque; Peak Twitch torque
Kooistra et al., 2005 [56]	8/100%	Healthy; age: 25.0±3.7	Cathode: 5 x 5 cm Anode: 13 x 8 cm	Cathode: femoral nerve Anode: gluteal fold	Hip: 70° Knee: 30°, 60°, and 90°	Triplet torque
Place et al., 2005 [43]	11/100%	Healthy; age: 24±4 y; body mass: 67±7 kg; height: 177±6 cm	Cathode: monopolar ball electrode 0.5 cm diameter Anode: 10x5 cm	Cathode: femoral nerve Anode: gluteal fold	Hip: 90° Knee: 35°, 75°	Peak twitch torque
Ruiter et al., 2004 [55]	7/100%	Healthy; age: 19–40 y; body mass: 79–85 kg; height: 172–194 cm	Cathode: 5 x 5 cm Anode: 13 x 8 cm (?)	Cathode: femoral nerve Anode: gluteal fold	Hip: 70° (?) Knee: 30°, 60°, 90°	Octet
Babault et al., 2003 [38]	9/100%	Healthy; age: 20.6±1.6 y; body mass: 73.8±6.3 kg; height: 177.3±5.7 cm	Cathode: ball probe (100 mm diameter) Anode: 10 x 5 cm	Cathode: femoral nerve Anode: between the greater trochanter and the inferior iliac crest.	Hip: 90° Knee: 35°, 55°, 75°	Peak twitch torque
Maffiuletti et al., 2003 [72]	11/100%	Healthy; age: 26.4±5.4 y; body mass t: 71.4±8.8 kg; height: 177.5±6.8 cm	1 (0.5 cm diameter) 1 (5 x 10 cm)	Right leg; femoral triangle, 3–5 cm below the inguinal ligament and gluteal fold	Hip: 0° or 90° Knee: 90°	Peak twitch torque
Hansen et al., 2003 [25]	13/53.8%	Healthy; 26.1±3.2 y; weight: 68.57±0.6 kg; height: 173.9 ±8.7 cm	2 electrodes; size not mentioned	Biceps brachialis motor point	Shoulder: not informed Elbow: 48, 62, 76, 90, 104, 118, 132, 146, and 160	Doublet twitch torque

(Continued)

Table 2. (Continued)

Authors	Sample Size/ % male	Sample Characteristics	Electrode number (size), and type	Electrode Positions	Joint angles	Outcomes
Mela et al., 2001 [37]	6/66.6%	Healthy; age: 30.3±6.8 y	Cathode: circular (1.5-cm radius); indifferent: 5x9 cm	Cathode on deep peroneal nerve; indifferent electrode on distal bony part of the shank	Hip: seated Knee: not informed Ankle: 9° dorsiflexion, 16° plantar flexion, and 44° plantar flexion	Peak twitch torque
Rassier, 2000 [39]	10/-	Healthy; no other data available	2 (13 x 12 cm)	Right quadriceps muscle (proximally and distally)	Hip: seated Knee: 30°, 60°, 90°*	Twitch torque Fatigue
Sacco et al., 1994 [61]	14/-	Healthy; age: 34 (25–59 y)	2 (4-cm-diam)	Tibialis anterior	Knee: Not informed Ankle: 100° (optimum) and 80° (short)	Contraction fatigue
McNeal & Bake, 1988 [46]	10/50%	Healthy; age: 23–33 y	1 (4x5 cm) 1 (4x9 cm)	Left quadriceps muscle bellies	Hip: 60 Knee: 15°, 45°, 75°	Evoked torque
Fitch & McComas, 1985 [44]	10/-	Healthy; age: 31.1 ± 8.5	rectangular pieces of aluminum foil (2x4 cm);	Cathode over peroneal nerve; anode over the anterior-superior aspect of tibialis anterior	15° and 25° of dorsiflexion	Contraction fatigue
Fahey et al., 1985 [33]	55/ 50.90%	Healthy; females: age: 26.9 ± 4.27; body mass: 54.66 ± 5.19; height: 161.68 ± 6.21; males: age: 26.73 ± 3.52; body mass: 77.56 ± 7.24; height: 177.6 ± 7.06	2 (5.1x10.2 cm)	Quadriceps muscle bellies	Hip: unclear Knee: 0° or 65°	Strengthening for isometric and isokinetic torque
Marsh et al., 1981 [26]	5/100%	Healthy; age 19–37 y	Cathode: oval lead plate 5x2 cm, covered by saline-soaked cloth); anode: cloth pad soaked in saline and mounted on a steel plate (8x8 cm)	Cathode: upper part of TA; Anode: the lower third of TA.	11 angles (from 30° PF to 20° DF), in steps of 5°	Tetanic stimulation at 40 Hz

DF: Dorsiflexion; PF: Plantar flexion; (?) presumed considering other articles by the authors; \*.

<https://doi.org/10.1371/journal.pone.0304205.t002>

or nerve stimulation (twitch, doublet, triplet, or octet) comparing the value reached at different muscle lengths. Of these, 17 were conducted on the knee extensors, two on the ankle plantar flexors, two on the ankle dorsiflexors, and two on the biceps brachialis muscle.

A total of seven meta-analyses were conducted, involving data from 13 studies (Fig 2A–2G) that applied NMES to the quadriceps femoris muscles (there were no matching studies for other muscle groups). Although the study by Gerrits et al. [16] met the criteria for inclusion in the meta-analyses, only the data from their able-bodied participants were used, as their sample also encompassed individuals with spinal cord injuries. Furthermore, according to the Cochrane recommendations [51], triplet torque data (sample, mean, and standard deviation) for knee flexion angles of 50°, 60°, and 70° were combined/collapsed to represent optimal (mid-range) muscle length, while the data for angles of 80° and 90° were combined to represent long muscle length. Collapsing data was also necessary in the study by Ruiter et al. [52], which compared the quadriceps triplet torque produced at 10°, 30° 60°, and 90° of knee flexion. In this case, 10° and 30° were collapsed to represent short muscle length. Notably, there was a significant effect (SMD: -1.59, CI 95%: -2.03, -1.15,  $p < 0.001$ ) that favored optimal muscle length over very short muscle length during muscle belly stimulation (Fig 2A). This observation was drawn from three studies characterized by high-quality evidence [11,45,53].

Table 3. NMES parameters used in the included studies.

Author	Current Type	Waveform	Pulse Frequency (Hz)	Phase Duration ( $\mu$ s)	Time ON/OFF (sec) or Duty Cycle	Additional parameters	Fatigue protocol duration	Intensity
Cavalcante et al., 2022 [14]	Bipolar	-	100	500	10 s / 120 s	-	Does not apply	MEIC (VAS 8/10)
Cavalcante et al., 2021 [11]	Bipolar	-	100	500	10 s / 120 s	-	12 contractions	MEIC (VAS 8/10)
Harnie et al., 2020 [57]	Constant	Rectangular	Single pulse	1000	Does not apply	400 V	Does not apply	120% supramaximal (84.4 $\pm$ 15.7 mA)
Hali et al., 2021 [74]	-	Square	Single pulse	200	Does not apply	400 V	Does not apply	20% supramaximal stimulation
Fouré et al., 2020 [28]	Biphasic symmetric	Rectangular	100	400	5 s / 35 s	-	40 contractions	MEIC
Debenham & Power, 2019 [49]	-	Square	300 (Octet)	Single pulse: 1000; octet: 200	-	400 V	Does not apply	Single pulse: 15% above plateau Octet: plateau (maximum torque)
Scott et al., 2019 [53]	-	Square	75	600	4 s / 60 s	-	Does not apply	MEIC (VAS 7/10)
Gavin et al., 2018 [48]	-	-	Single pulse	400*	-	-	Does not apply	27 mA
Merlet et al., 2018 [76]	-	Rectangular	Single pulse	1000	-	400 V	Does not apply	120% twitch force
Yanase et al., 2017 [62]	-	-	20	250	5 s / 2 s	-	20 min (fatigue not assessed)	Maximum tolerated
Visscher et al., 2017 [71]	-	Rectangular	Single pulse	1000	-	-	Does not apply	100 mA
Bampouras et al., 2017 [65]	Bipolar	-	100	200	1 s/-	10 ms IPI	Does not apply	Supramaximal (512 $\pm$ 124.6 mA)
Ando et al., 2018 [58]	Constant	-	20	200	70 s / 0 s	400 V	1 contraction	120% twitch force (36–134 mA)
Bremner et al., 2015a [45]	Russian	-	Carrier frequency: 2500	Not informed	/ 120 s	Burst frequency: 50 bursts/s	Does not apply	Not clear
Bremner et al., 2015b [47]	Russian	-	Carrier frequency: 2500	Not informed	15 s (single contraction)	Burst frequency: 50 bursts/s	Does not apply	30% - 40% MVC
Frigon et al., 2011 [50]	-	-	25 and 100	1000	-	-	Does not apply	10–15% of Maximal evoked twitch at an ankle joint of 90° for plantar flexors, and at 120° for dorsiflexors
Skurvydas et al., 2010 [42]	-	Square	100*	500	1 s / 10 s	-	Does not apply	10% supramaximal
Marion et al., 2009 [60]	Constant	-	33	600	1 s / 1 s	-	78 contractions	20% MVC at 90° of knee flexion
Ruiter et al., 2008 [52]	Constant	-	300 (triplet)	200	Does not apply	Does not apply	Does not apply	50 mA over maximum at 90° of knee flexion (250–400 mA).
Kooistra et al., 2007 [54]	-	Rectangular	300 (triplet)	100	Does not apply	Does not apply	Does not apply	50 mA over maximum at each angle
Lee et al., 2007 [59]	-	-	40	600	Not clear	-	120 contractions	20% MVC

(Continued)



Table 3. (Continued)

Author	Current Type	Waveform	Pulse Frequency (Hz)	Phase Duration ( $\mu$ s)	Time ON/OFF (sec) or Duty Cycle	Additional parameters	Fatigue protocol duration	Intensity
Gerrits et al., 2005 [16]	-	Square	300 (triplet)	200	/ 120 s	-	Does not apply	Supramaximal
Miyamoto & Oda, 2005 [78]	-	Rectangular	30*	100	-	-	Does not apply	maximal twitch contraction
Kooistra et al., 2005 [56]	-	Rectangular	300 (triplet)	100	-	-	Does not apply	50 mA over maximum torque (procedure at 60°, but used for the other positions. i.e., same amplitude for all positions.
Place et al., 2005 [43]	Constant	-	Does not apply	1000	Does not apply	400 V	Does not apply	Maximum (300–500 mA)
Ruiter et al., 2004 [55]	Constant	-	300	100	Does not apply	Does not apply	Does not apply	Maximum
Babault et al., 2003 [38]	-	Square-wave	Does not apply	1000	Does not apply	400 V	Does not apply	10% supramaximal (60–130 mA)
Maffiuletti et al., 2003 [72]	-	Rectangular	Single pulse	-	-	400 V	Does not apply	Supramaximal (50–80 mA)
Hansen et al., 2003 [25]	-	Square	-	800	-	8 ms inter-twitch interval	Does not apply	Doublet
Mela et al., 2001 [37]	-	Rectangular	50*	300	2 s/ not clear	-	Does not apply	Beneath the subject's pain threshold
Rassier, 2000 [39]	-	Square	50	50	5 s / 5 s	-	9 contractions	50% MVC
Sacco et al., 1994 [61]	-	Rectangular	30	-	15 s / 5 s	-	6 contractions	20% MVC
McNeal & Bake, 1988 [46]	-	-	Single pulse	-	-	-	Does not apply	60 mA
Fitch & McComas, 1985 [44]	-	Rectangular	20	50	90s/0s	-	Single contraction	Supramaximal stimulus intensities
Fahey et al., 1985 [33]	asymmetrical bi-phasic	Square	50	Not informed	10s/35s	25 V; Pulse time to peak stimulus: 2 s	60 contractions (15 min); fatigue not assessed	42.6±4.4 mA (slowly increased to the highest level comfortably tolerated)
Marsh et al., 1981 [26]	-	Rectangular	40*	100	-	-	Does not apply	20% supramaximal

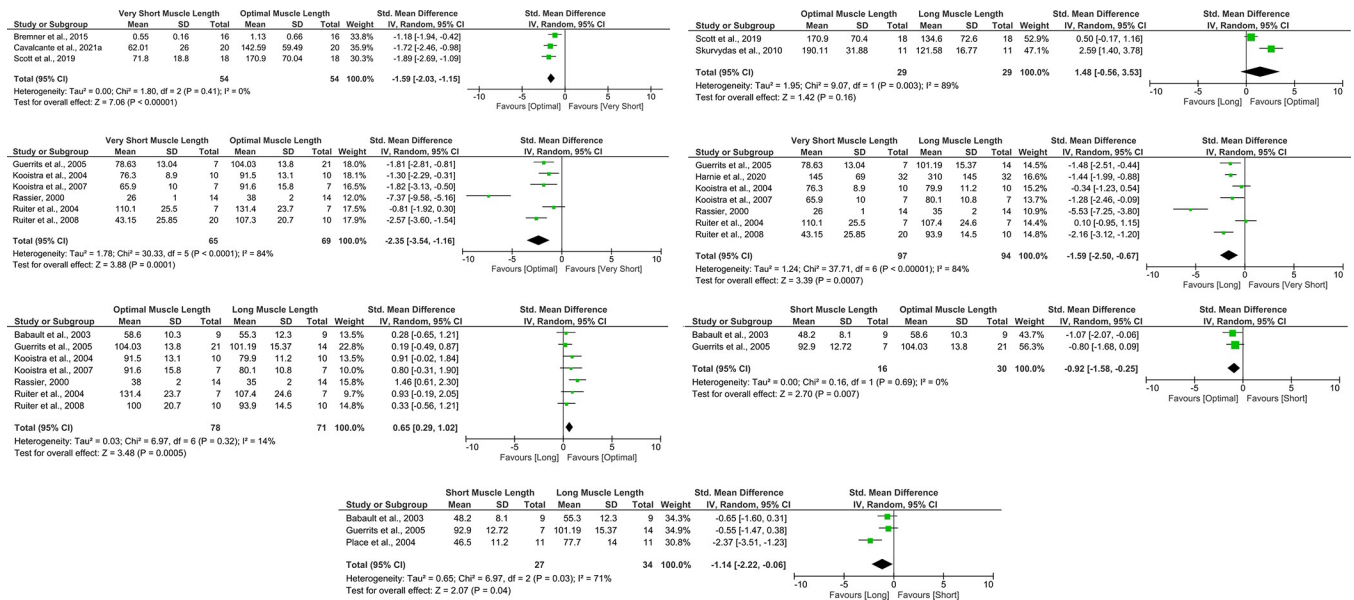
IPI: Interpulse interval; bps: Bursts per second; MEIC: Maximal electrically induced contraction; VAS: Visual Analogue Scale; MVC: Maximal voluntary contraction;

\*maximum frequency/pulse width chosen among two or more options.

<https://doi.org/10.1371/journal.pone.0304205.t003>

However, there was no significant effect (SMD: 1.48, CI 95%: -0.56, 3.53,  $p = 0.16$ ) when comparing optimal and long muscle lengths during muscle belly stimulation (Fig 2B), drawn from a low-risk study [53] and a study that presented concerns, as the authors did not mention an adequate rest period between joint angle comparisons [42], yielding a moderate quality of evidence according to GRADE. For this stimulation type, no corresponding article was available for comparing other muscle lengths.

For the femoral nerve stimulation, all outcomes were graded as high-quality evidence. There was a significant effect of greater evoked torque favoring the optimal muscle length vs.



**Fig 2.** Meta-analyses of (A) very short muscle length vs. optimal muscle length for maximum evoked torque produced during quadriceps muscle motor point stimulation, (B) optimal muscle length vs. long muscle length for maximum evoked torque produced during quadriceps muscle motor point stimulation, (C) very short muscle length vs. optimal muscle length for maximum evoked torque produced during femoral nerve stimulation, (D) very short muscle length vs. long muscle length for maximum evoked torque produced during femoral nerve stimulation, (E) optimal muscle length vs. long muscle length for maximum evoked torque produced during femoral nerve stimulation, (F) short muscle length vs. optimal muscle length for maximum evoked torque produced during femoral nerve stimulation, and (G) short muscle length vs. long muscle length for maximum evoked torque produced during femoral nerve stimulation.

<https://doi.org/10.1371/journal.pone.0304205.g002>

very short muscle length (SMD: -2.20, CI 95%: -3.42, -0.99,  $p < 0.001$ , Fig 2C) (16, 39, 52, 54–56), vs. short muscle length (SMD: -0.72, CI 95%: -1.43, -0.02,  $p = 0.04$ , Fig 2F) (16, 38), and vs. long muscle length (SMD: 0.63, CI 95%: 0.24, 1.02,  $p = 0.002$ , Fig 2E) (16, 38, 39, 52, 54–56). Moreover, there was a significant effect of greater evoked torque favoring the long muscle length vs. very short muscle length (SMD: -1.49, CI 95%: -2.40, -0.58,  $p < 0.001$ , Fig 2D) [16,39,52,54–57], and vs. short muscle length (SMD: -1.14, CI 95%: -2.22, -0.06,  $p = 0.04$ , Fig 2G) [16,38,43].

### NMES-induced contraction fatigue

Eight studies conducted an NMES-fatiguing protocol, six on the quadriceps femoris muscle (one of them through femoral nerve stimulation), and two on the tibialis anterior muscle. More highly flexed knee joint angles were more fatiguing for the quadriceps in five out of the six studies: 20° vs. 60° [14], 50° vs. 100° [28], 60° vs. 110° [58], 15° vs. 90° [59], and 30° vs 90° [39], while in the investigation by Marion et al. [60], contraction fatigue was notably pronounced at the joint angle that exhibited the highest pre-fatigue force and the least contraction fatigue was observed at the joint angle characterized by a lower pre-fatigue force. In this instance, 65° of knee flexion demonstrated a greater pre-fatigue force compared to angles of 20° and 90°. However, Rassier [39] exhibited contradictory outcomes and reporting. The authors indicated a more substantial relative decline in torque at the most elongated position (90° compared to 60° and 30° of knee flexion), but the textual content consistently referred to greater contraction fatigue occurring at the most shortened muscle length. Regarding the tibialis anterior, findings suggested that NMES-induced contraction fatigue was more prominent at the optimal muscle length in contrast to the shortened position [44,61].

## Perceived discomfort

Six studies reported the perceived discomfort through a numeric scale. These studies used the Visual Analogue Scale (VAS), while one study also used the Verbal Rating Scale (VRS) [48]. Three studies utilized a VAS fixed value to achieve the maximum evoked contraction during quadriceps NMES: 7 out of 10 [53] and 8 out of 10 [11,14]. One study [47] found the current amplitude required to achieve 30% to 40% of the MVC at the more extended knee angle (15°), and used the same current amplitude for the knee at 60° (which would produce a much lower percentage of the MVC for this angle) and compared the VAS. The authors found that, for 15° and 60°, the VAS values were 32.42 mm (CI upper: 42.09; CI lower: 23.02) and 17.11 mm (CI upper: 27.34; CI lower: 7.09), respectively. One study, with a healthy older population [48], chose a fixed current amplitude (27 mA) for the stimulation of the common peroneal nerve to evoke isometric dorsiflexion (ankle angle not mentioned), to compare, among other variables, the perceived discomfort at three knee angles (0°, 45°, and 90°). Pulse duration was gradually increased from 50  $\mu$ s to 400  $\mu$ s. At the highest pulse duration, no significant difference in perceived discomfort among knee angles was observed, as assessed using both the VAS and the VRS. In another study [62], a 20-minute NMES protocol was applied to the infraspinatus muscle. The participants were divided into four groups, based on joint angle and type of contraction (three for isometric and one for concentric contraction), as well as a control group. For the isometric contractions, three shoulder rotation angles were employed, with participants lying prone and shoulders abducted at 90°: maximum internal rotation ( $82.5^\circ \pm 9.6^\circ$ ), neutral rotation, and maximum external rotation ( $86.1^\circ \pm 13.5^\circ$ ). The initial five minutes of muscle stimulation were utilized to progressively increase the current amplitude to the highest tolerable level for each subject (initial VAS not reported). This amplitude remained unchanged throughout the protocol. Following the protocol, no notable disparities were found among the groups (current amplitude [mA]:  $83.5 \pm 20.4$ ,  $85.0 \pm 27.2$ , and  $79.0 \pm 20.4$ ; VAS [mm]:  $63.1 \pm 19.0$ ,  $65.9 \pm 18.8$ , and  $59.8 \pm 19.9$  for the internal, neutral, and external rotation groups, respectively). A limitation of the study was the absence of force output measurement [62]. Regrettably, these studies could not be included in a meta-analysis due to these limitations.

## Strengthening NMES training

Among the included studies, only one [33] investigated the impacts of NMES on muscle strengthening as a function of muscle length. The young participants were trained at two joint angles: full knee extension (0°) and a flexed position (65°), in a supine position (hip angle unspecified). The outcomes revealed that NMES led to heightened isometric strength, with increases of 9.5% and 15.4% in the flexed knee group for males and females, respectively, and increases of 7.3% and 15.5% in the extended knee group for males and females, respectively, without difference between the groups. Notably, NMES exhibited greater effectiveness in enhancing isokinetic performance when the knee was flexed during treatment. Specifically, at the velocity of  $30^\circ \cdot s^{-1}$  and  $120^\circ \cdot s^{-1}$  for women, and  $120^\circ \cdot s^{-1}$  for men, there was a greater improvement in the isokinetic torque.

## Discussion

This is the first systematic review to assess the effect of muscle length on maximum electrically induced torque, perceived discomfort, NMES-induced contraction fatigue, and strength following an NMES-strengthening program. We found that, for the quadriceps femoris muscle, the optimal muscle length for evoked torque was obtained at midrange (50°-70°) compared to short (regardless of stimulation method) and long muscle lengths (during nerve stimulation), reflecting its force-length relationship. In addition, the long length allowed greater evoked

torque than the short and very short muscle lengths. According to the GRADE recommendations [36], the quality of evidence was very high for most muscle length comparisons of the evoked torque, except optimal vs. long muscle length during muscle belly stimulation, which presented moderate quality of evidence. Other muscles, such as the ankle dorsiflexors and biceps brachialis, also exhibit an ideal (intermediate) length. However, for the ankle plantar flexors, longer lengths (either by manipulating the ankle or the knee joint angles) generated greater torque compared to short lengths, which also agrees with the torque-angle relationship for this muscle group that works in the ascending limb of the force-length relation [63].

When considering a given current amplitude, a shorter quadriceps muscle length seems to induce increased discomfort compared to the neutral position, although no definitive conclusions can be drawn regarding other muscle lengths and different muscles. NMES-induced contraction fatigue appears to be greater when the muscle length enables greater torque generation in the pre-fatigue condition. A protocol conducted at the ideal muscle length yielded greater quadriceps strength gains compared to a very short length, probably due to the greater mechanical work performed by the muscle at optimal length. Taken together, these findings suggest that prioritizing the optimal muscle length should be the initial choice for NMES interventions, avoiding shortened, low-demanding muscle lengths if clinically viable. However, indirect evidence from the included studies [62,64,65] and voluntary training elsewhere [66,67] point to the use of long quadriceps muscle lengths as a means of increasing mechanical stress during contraction and likely improving muscle force/mass and tendon properties, while the hamstrings may still benefit from training at shorter lengths [68]. Therefore, there are still many questions to be answered regarding NMES effects according to muscle length, with further research needed.

## Evoked torque

**‘Very short’ and ‘short’ vs. ‘optimal’ quadriceps femoris muscle length.** While the force-length relationship is a well-established property of muscles fibers [21], this is the first meta-analysis confirming force disparities across multiple quadriceps femoris muscle lengths during electrical stimulation. As expected, an optimal muscle length surpasses very short or short muscle lengths in its capacity to evoke higher torque during NMES. This has significant implications for the utilization of NMES in both clinical and athletic contexts. Employing a shortened muscle length to facilitate a particular limb position (such as a fully extended knee) may likely constrain the potential benefits of NMES [31]. The selection of muscle length should be judicious, particularly in specific scenarios, such as cases involving limited/painful range of motion or with non-strengthening/hypertrophy goals.

**‘Very short’ and ‘short’ vs. ‘long’ quadriceps femoris muscle length.** In the long muscle length, NMES evoked higher torque when compared to both very short and short muscle lengths during nerve stimulation. It is noteworthy mentioning that the well-established knee extensor force-length relationship indicates potential alignment in force levels between short and long muscle lengths along the ascending and descending limbs of the curve [21]. However, it is important to consider that long muscle lengths tend to induce greater tensile stress [67], a factor favorable to enhance muscle (serial and parallel sarcomere) growth [66] and improve tendon mechanical properties [67]. This, in turn, lends support to the idea of choosing longer muscle lengths to accelerate the recovery of muscle mass. For instance, in the context of voluntary isometric knee extension exercises performed at short ( $43.1^\circ \pm 4.6^\circ$  of knee flexion) and long ( $86.9^\circ \pm 6.5^\circ$ ) muscle lengths, the latter (long) can accelerate hypertrophy, while the former (short) yields greater strength enhancement at the training angle [66].

**‘Optimal’ vs. ‘long’ quadriceps femoris muscle length.** Two meta-analysis were conducted comparing optimal and long muscle lengths during two distinct methodologies: muscle belly and nerve stimulation. The results favored the optimal muscle length during nerve stimulation (seven studies) (Fig 2E), aligning with the expectations derived from the force-length relationship. Nevertheless, there was no difference during muscle stimulation (2 studies), which is likely attributed to the small number of studies and their heterogeneity. Consequently, opting for an optimal muscle length is likely to expedite progress in achieving strength gains. However, it is important to note that the aforementioned impact of tensile stress may render long muscle lengths more advantageous for other aspects related to muscle-tendon unit properties [67]. Moreover, long muscle lengths may lead to both parallel and serial sarcomerogenesis, which holds particular value in the treatment of various clinical conditions characterized by serial sarcomere loss (such as bed-rest periods, post-surgical interventions), followed by subsequent loss of functionality [66,69,70].

**Other muscle length comparisons for the quadriceps femoris.** Some studies could not be meta-analyzed [46,71]. Vissher et al. [71] compared the evoked torque through femoral nerve stimulation among three knee angles, finding a significantly lower peak twitch torque at 30° of knee flexion than at 65° and 90°. However, the authors used a current amplitude of 100 mA for all tests, without mentioning if it evoked a maximal or supramaximal stimulus. Similarly, a pioneering study [46] standardized a 60 mA current amplitude for three different knee angles: 15°, 45°, and 75° during quadriceps femoris muscle belly stimulation. While similar current amplitude offers the advantage of facilitating the comparison of efficiency (i.e., the ratio of torque by current amplitude) [11], it does not inform about the maximum evoked torque capacity.

Maffiuletti et al. [72], employing femoral nerve stimulation, and Bampouras et al. [65], using muscle belly stimulation, both observed higher quadriceps evoked torque in the supine position compared to the seated position when the knee was fixed at 90°. This suggests that the supine posture may position the biarticular rectus femoris muscle closer to its optimal length, a concept in line with the muscle’s functional range [73]. However, when the knee is positioned at 60°, this difference becomes less distinct and may or may not manifest [11]. An underlying explanation for these divergent outcomes might be the greater passive tension experienced by the knee extensors when the knee is flexed at 90°, compared to the 60° flexion angle. These disparities could be attributed to the variance in the knee extensor passive tension under different knee angles. Future investigations hold the potential to elucidate whether manipulation of hip angles could confer benefits in the application of NMES to knee extensors.

Care should be taken concerning definitions of short, optimal, and long muscle length. For example, Fouré et al. [28] suggested that “rehabilitation training programs including electrically induced isometric contractions should be performed at short muscle lengths.” This could misleadingly imply that short could be better than optimal in any NMES program. However, in the study, “short” was 50° and “long” was 100° of knee flexion, and 50° is closer to the angle range commonly reported as optimal (intermediate or midrange): 55° - 65° of knee flexion [11,38,71].

**Length comparisons for other muscle groups.** Our research retrieved studies that used other muscle length comparisons, which could not be meta-analyzed. Hali et al. [74] compared a shortened position (20° plantar flexed from neutral) and a lengthened position (20° dorsiflexed from neutral) for the triceps surae muscle and found greater peak twitch torque for the long muscle length ( $39.5 \pm 12.5$  vs  $11.9 \pm 4.8$ ). While the aforementioned study does not include a neutral position for comparison, studies focusing on MVC have shown that greater plantar flexor torque is generated at lengthened muscle lengths compared to neutral positions



[63,75]. This indicates that the muscle-tendon unit and joint complex being examined differ from the knee extensor mechanism in terms of their response to muscle length, according to each muscle's mechanical properties (i.e., force-length relation). Similarly, the twitch and doublet (as well as the MVC) evoked torques for the plantar flexors increase when the knee is more extended, which lengthens the biarticular gastrocnemius, although, in their discussion, the authors seem to state the opposite to the information expressed in their results [76].

Mela et al. [37] stimulated the dorsiflexors through the stimulation of the deep peroneal nerve, while Marsh et al. [26] applied the stimulation directly over the tibialis anterior muscle belly. Specifically for Marsh et al. [26], who assessed several joint angles (from 30° of plantar flexion to 20° of dorsiflexion in steps of 5°), the greatest torque was obtained at 10° of plantar flexion. In the Mela et al. ([37] study, nerve stimulation applied to activate all four dorsiflexors resulted in an average evoked torque of 50% of MVC regardless of ankle joint angle. In healthy volunteers, evoked torque rarely reaches 100% of MVC [1]. Both authors, despite using different stimulation methods, consistently found that torque generation was greater in the plantar flexed (lengthened) position compared to the dorsiflexed (shortened) position, which also agrees with the force-length relationship of the dorsiflexors, whose plateau occurs at 30° of plantar flexion [63]. This agreement emphasizes the influence of joint angle (and therefore muscle length) on torque production, irrespective of the specific details of the stimulation method.

Hansen et al. [25] assessed the force-angle relationship of elbow flexors during isometric contractions at various angles. The authors found that MVC, double twitch, and single twitch peak torques occurred at 90° (223.6 ± 56.3 N), 104° (223.6 ± 56.3 N), and 118° (223.6 ± 56.3 N), respectively. This indicated a rightward shift in the curves with submaximal force, possibly due to increased Ca<sup>2+</sup> sensitivity with muscle lengthening during submaximal contractions [77]. Future studies could use the peak region of the force-angle relationship with NMES to more efficiently enhance elbow flexor strength. Additionally, Miyamoto and Oda [78] observed similar findings, with significantly higher torque at 120° (or 60°, considering full elbow extension as 0°) compared to more flexed angles. Future studies could also examine the impact of shoulder and forearm angles on the elbow flexor force-angle relationship during NMES.

### Contraction fatigability

A meta-analysis for this outcome could not be conducted due to discrepant methodologies across various studies. NMES-induced contraction fatigue appears to intensify when the muscle length enables greater torque generation in the initial (pre-fatigue) state, which may be explained by the increased metabolic demand of higher-intensity contractions, related to more actin-myosin cross-bridge formation [44]. Indeed, this is supported by the reduced oxygen consumption/metabolic rate at short muscle lengths [79]. However, also at shorter lengths, activity-dependent muscle fiber potentiation (enhanced submaximal contractility due to prior activity) is greater and may limit the detection of contraction fatigue [80]. Some studies that applied voluntary contraction-fatigue protocols are in agreement with these results [41], while others did not find significant differences in contraction fatigue according to muscle length [81]. These studies employ varying knee joint angles and contraction fatigue-protocol methodologies, limiting generalizability. For example, although the magnitude of force decline (fatigue itself) from isolated muscle-tendon units of rat medial gastrocnemius was also greater at longer muscle lengths, the rate of contraction fatigue (fatigability) was greater at short muscle lengths [82].

Notably, even with the increased contraction fatigue observed after NMES-fatigue protocols, optimal muscle lengths continue to yield greater torque compared to shorter lengths [14,63]. Therefore, the higher contraction fatigue observed at optimal length should not



preclude its preferential utilization in NMES strengthening programs, as it may still maintain the desired high muscle-tendon load [11,15]. However, new studies are needed to explore long-term outcomes. Additionally, for muscles spanning multiple joints, such as the quadriceps femoris, an added stretch, through hip extension, may also accelerate the onset of contraction fatigue and modulate strengthening adaptations [14], so this biomechanical aspect should not be overlooked when positioning the body parts. Finally, while the expectation that shorter muscle length generates less force, leading to reduced contraction fatigue compared to the optimal length, holds true for the quadriceps femoris, the same principle does not uniformly apply to the tibialis anterior muscle [61], opening the field for new studies to explore how different muscles respond acutely according to their fiber length and mechanical properties during NMES.

### Perceived discomfort

The assessment of perceived discomfort in the context of muscle length manipulation remains somewhat limited. We could not draw strong conclusions from the available studies. While it is often reported that shorter muscle lengths can induce painful cramp-like contractions, this hypothesis has not yet been subjected to rigorous testing [1]. Specifically, we found only one study evidencing that for the same current amplitude, greater discomfort is reported when quadriceps NMES is applied at 15° of knee flexion compared to 60°. These results raise considerations for dynamic contractions with NMES, as care must be taken with excessive discomfort during the final range of motion. Interestingly, studies employing the VAS as a means to achieve maximum electrically induced contractions [11,53] have consistently yielded the same percentage of the maximum voluntary contraction. However, this may come at the cost of greater current amplitude applied at longer muscle lengths compared to shorter positions [11]. Thus, comprehensive understanding of the influence of muscle length on perceived discomfort leads to unavoidable questions, such as tracking the change in the localization of motor and sensory nerve branches under the electrodes with changes in joint angle, which may require meaningful strategies to optimize the clinical outcomes [83].

Finally, the study by Yanase et al. [62] did not include a means of monitoring torque, thereby restricting the comprehensive interpretation of the reported discomfort data. For comprehensive understanding of the impact of muscle length on NMES-induced perceived discomfort, the resulting torque (indicative of contraction intensity) also needs to be taken into account. Hence, future research should emphasize the development of torque control methodologies that are adaptable to diverse clinical settings and muscles, particularly in instances where dedicated equipment like a dynamometer chair is not readily available [31].

### Strengthening by NMES training

The effects of strength training with NMES are not yet fully understood. A solitary study [33] compared the results of a six-week NMES protocol at different knee joint angles (65° and 0°). Participants were supine during the treatment protocol, but the hip angle was not mentioned. The authors found greater strength gains for the protocol at 65° of knee flexion during isokinetic tests. However, we partially answered our hypothesis because the improvement in muscle strength was equivalent for both groups during the isometric test at 65° (unfortunately, other angles were not tested), defying the angle-specificity adaptations (i.e., an increase in strength only in and close to the trained angle), which is not uncommon after isometric or partial range of motion training [67,68]. Interestingly, the participants [33] trained at full knee extension (i.e., at short knee extensor length), which would be assumed as being disadvantageous for torque generation and strengthening [11,31]. However, as the authors did not mention the hip

angle, if participants were fully supine in the full knee extension group, but with hip flexed in the knee flexed group, this adds a bias that tend to equalize muscle-tendon unit length and stiffness among positions [11]. No further studies are available for evaluating longer muscle lengths and hypertrophy. Despite the limited number of studies, a recent review [84] on the effects of NMES on knee post-surgery rehabilitation recommended positioning the patient at a 60° knee flexion angle if medically safe, justifying this advice by the anticipated greater torque in this position. Additional research on the adaptation of strengthening through NMES training with different joint positions is important to gain better understanding of its implementation in clinical settings.

Most NMES protocols primarily involve isometric contractions. While isometric contractions with a fully extended knee do not require specialized equipment, they may lead to reduced strength gains [31]. For precise control of joint angle and torque, a dynamometer chair is the optimal choice. However, access to these resources may be limited, particularly outside clinical facilities, such as in home care [31]. In resource-constrained clinical settings, particularly for bed-bound patients, a practical approach to managing joint angles during isometric contractions is by obtaining the desired knee flexion angle using a support under the lower limb (e.g., triangular wedge pillow) and ankle weights/restraints [85]. This approach, demonstrated by Toth et al. [86], effectively maintains the knee at a set angle. Another viable strategy involves seating the patient on a chair and using an adjustable strap to restrict knee extension, maintaining hip and knee angles at approximately 90° [2]. It is essential to note that to obtain high torque levels and, consequently, the most significant effect with these simple solutions, the current amplitude must be increased up to the maximum tolerated discomfort [84]. Additionally, to assess the quality of the contraction and monitor progress during the NMES program, visual inspection can be used, along with the option of manual resistance if needed.

## Limitations

The scope of our investigation was confined to evoked torque (non-potentiated), contraction fatigue (torque decline), discomfort, and chronic adaptation measures (strength and muscle mass gains) in response to NMES. However, certain included studies investigate other variables that may hold relevance for future reviews, such as the force-frequency relationship, differences in anatomical muscle-tendon-length characteristics (such as those seen in the plantar flexor), potentiated torque, M-wave, and the force-time integral. Moreover, the presence of multiple outcome measures introduces complexity and makes descriptive comparisons between studies challenging. Furthermore, the considerable variability across evaluations and clinical heterogeneity among studies precluded us from conducting more meta-analyses, consequently constraining this review to descriptive rather than quantitative comparisons. In addition, no previous meta-analyses have compared the different electrical stimulation techniques (e.g., single, doublet, tetanic, nerve vs muscle), and muscle length comparisons may be influenced by stimulation technique [87]. Lastly, despite conducting a comprehensive literature search across diverse databases, it is important to recognize that the search primarily targeted English-language journals, potentially overlooking studies in non-English publications and regional databases.

The included studies exhibited scores ranging from fair to good, and from 4 to 7 points on the PEDro scale. An assessment combining both the PEDro and RoB-CO frameworks reveals several concerns, particularly the absence of a clear delineation of methods to eliminate acute carryover effects, such as potentiation or contraction fatigue [39], since some studies compared joint angles on the same day, without justifying the allowed time for recovery between

joint angle tests (see “*Bias arising from period and carryover effects*” in [S3 File](#)). This is particularly pertinent when considering outcomes linked to maximum evoked torque. While examples of insufficient randomization were infrequent, they were evident in three studies [46,49,61]. Additionally, it is noteworthy that achieving blinding for both participants and assessors in studies involving joint angles can present inherent challenges. For forthcoming research endeavors, we suggest participant blinding pertaining to specific outcomes that have the potential to influence performance. Furthermore, it is essential to highlight that a significant number of studies did not incorporate a preliminary familiarization session, despite its potential to impact participant performance [88].

## Conclusion

In conclusion, optimal muscle length is key for maximizing torque generation during NMES. Longer muscle lengths also contribute to increased torque, while shorter lengths may result in greater discomfort. Tailoring joint angles to training goals can influence contraction fatigue. Quadriceps strength gains may be superior at the ideal muscle length compared to short muscle lengths, aiding muscle recovery. However, considering the limited NMES evidence, and conflicting findings after voluntary training, the use of short or long muscle lengths should be carefully selected based on diverse clinical factors, such as the available joint range of motion and the need for improvement in muscle-tendon unit properties. These findings are crucial for populations who present difficulty with volitional muscle contraction. Further research is needed to comprehensively assess the short- and long-term effects of varying muscle lengths on musculoskeletal adaptations after an NMES-strengthening program.

## Supporting information

**S1 File. Preferred Reporting Items for Systematic and Meta-Analyses Statement (PRISMA) checklist.**

(DOCX)

**S2 File. Search strategies according to database.**

(DOCX)

**S3 File. Risk of bias assessment according to the Revised Cochrane risk-of-bias tool for cross-over trials (RoB-CO).**

(PDF)

## Author Contributions

**Conceptualization:** Jonathan Galvão Tenório Cavalcante, Júlia Aguillar Ivo Bastos, Marco Aurélio Vaz, Nicolas Babault, João Luiz Quagliotti Durigan.

**Data curation:** Jonathan Galvão Tenório Cavalcante, Victor Hugo de Souza Ribeiro.

**Formal analysis:** Jonathan Galvão Tenório Cavalcante, Victor Hugo de Souza Ribeiro.

**Funding acquisition:** Jonathan Galvão Tenório Cavalcante, Rita de Cássia Marqueti, João Luiz Quagliotti Durigan.

**Investigation:** Jonathan Galvão Tenório Cavalcante, Victor Hugo de Souza Ribeiro, Júlia Aguillar Ivo Bastos.

**Methodology:** Jonathan Galvão Tenório Cavalcante, Victor Hugo de Souza Ribeiro, Rita de Cássia Marqueti, Isabel de Almeida Paz, Júlia Aguillar Ivo Bastos, Marco Aurélio Vaz, Nicolas Babault, João Luiz Quagliotti Durigan.

**Project administration:** Jonathan Galvão Tenório Cavalcante, Victor Hugo de Souza Ribeiro, Marco Aurélio Vaz, Nicolas Babault, João Luiz Quagliotti Durigan.

**Resources:** Jonathan Galvão Tenório Cavalcante, João Luiz Quagliotti Durigan.

**Software:** Jonathan Galvão Tenório Cavalcante, Victor Hugo de Souza Ribeiro, Júlia Aguillar Ivo Bastos.

**Supervision:** Jonathan Galvão Tenório Cavalcante, Rita de Cássia Marqueti, Marco Aurélio Vaz, Nicolas Babault, João Luiz Quagliotti Durigan.

**Validation:** Jonathan Galvão Tenório Cavalcante, Victor Hugo de Souza Ribeiro, Rita de Cássia Marqueti, Isabel de Almeida Paz, Júlia Aguillar Ivo Bastos, Marco Aurélio Vaz, Nicolas Babault, João Luiz Quagliotti Durigan.

**Visualization:** Jonathan Galvão Tenório Cavalcante, Victor Hugo de Souza Ribeiro, Rita de Cássia Marqueti, Isabel de Almeida Paz, Júlia Aguillar Ivo Bastos, Marco Aurélio Vaz, Nicolas Babault, João Luiz Quagliotti Durigan.

**Writing – original draft:** Jonathan Galvão Tenório Cavalcante, João Luiz Quagliotti Durigan.

**Writing – review & editing:** Jonathan Galvão Tenório Cavalcante, Victor Hugo de Souza Ribeiro, Rita de Cássia Marqueti, Isabel de Almeida Paz, Júlia Aguillar Ivo Bastos, Marco Aurélio Vaz, Nicolas Babault.

## References

1. Herzig D, Maffiuletti NA, Eser P. The Application of Neuromuscular Electrical Stimulation Training in Various Non-neurologic Patient Populations: A Narrative Review. *PM R*. 2015; 7(11):1167–78. <https://doi.org/10.1016/j.pmrj.2015.03.022> PMID: 25839763
2. Vaz MA, Baroni BM, Geremia JM, Lanferdini FJ, Mayer A, Arampatzis A, et al. Neuromuscular electrical stimulation (NMES) reduces structural and functional losses of quadriceps muscle and improves health status in patients with knee osteoarthritis. *J Orthop Res*. 2013; 31(4):511–6. <https://doi.org/10.1002/jor.22264> PMID: 23138532
3. Bastos JAI, Martins WR, Junior GC, Collins DF, Durigan JLQ. Contraction fatigue, strength adaptations, and discomfort during conventional versus wide-pulse, high-frequency, neuromuscular electrical stimulation: a systematic review. *Appl Physiol Nutr Metab*. 2021; 46(11):1314–21. <https://doi.org/10.1139/apnm-2021-0269> PMID: 34260861
4. Rabello R, Frohlich M, Maffiuletti NA, Vaz MA. Influence of Pulse Waveform and Frequency on Evoked Torque, Stimulation Efficiency, and Discomfort in Healthy Subjects. *Am J Phys Med Rehabil*. 2021; 100(2):161–7. <https://doi.org/10.1097/PHM.0000000000001541> PMID: 32701636
5. Medeiros FV, Bottaro M, Vieira A, Lucas TP, Modesto KA, Bo APL, et al. Kilohertz and Low-Frequency Electrical Stimulation With the Same Pulse Duration Have Similar Efficiency for Inducing Isometric Knee Extension Torque and Discomfort. *Am J Phys Med Rehabil*. 2017; 96(6):388–94. <https://doi.org/10.1097/PHM.0000000000000631> PMID: 27680427
6. Maffiuletti NA. Physiological and methodological considerations for the use of neuromuscular electrical stimulation. *Eur J Appl Physiol*. 2010; 110(2):223–34. <https://doi.org/10.1007/s00421-010-1502-y> PMID: 20473619
7. Modesto KAG, Bastos JAI, Vaz MA, Durigan JLQ. Effects of Kilohertz Frequency, Burst Duty Cycle, and Burst Duration on Evoked Torque, Perceived Discomfort and Muscle Fatigue: A Systematic Review. *Am J Phys Med Rehabil*. 2022. <https://doi.org/10.1097/PHM.0000000000001982> PMID: 35121683
8. Vaz MA, Frasson VB. Low-Frequency Pulsed Current Versus Kilohertz-Frequency Alternating Current: A Scoping Literature Review. *Arch Phys Med Rehabil*. 2018; 99(4):792–805. <https://doi.org/10.1016/j.apmr.2017.12.001> PMID: 29247626

9. Inns TB, McCormick D, Greig CA, Atherton PJ, Phillips BE, Piasecki M. Factors associated with electrical stimulation-induced performance fatigability are dependent upon stimulation location. *Exp Physiol*. 2021; 106(4):828–36. <https://doi.org/10.1113/EP089204> PMID: 33638246
10. Flodin J, Juthberg R, Ackermann PW. Effects of electrode size and placement on comfort and efficiency during low-intensity neuromuscular electrical stimulation of quadriceps, hamstrings and gluteal muscles. *BMC Sports Sci Med Rehabil*. 2022; 14(1):11. <https://doi.org/10.1186/s13102-022-00403-7> PMID: 35034633
11. Cavalcante JGT, Marqueti RC, Geremia JM, de Sousa Neto IV, Baroni BM, Silbernagel KG, et al. The Effect of Quadriceps Muscle Length on Maximum Neuromuscular Electrical Stimulation Evoked Contraction, Muscle Architecture, and Tendon-Aponeurosis Stiffness. *Front Physiol*. 2021; 12:633589. <https://doi.org/10.3389/fphys.2021.633589> PMID: 33854439
12. Silva PE, Babault N, Mazullo JB, de Oliveira TP, Lemos BL, Carvalho VO, et al. Safety and feasibility of a neuromuscular electrical stimulation chronaxie-based protocol in critical ill patients: A prospective observational study. *J Crit Care*. 2017; 37:141–8. <https://doi.org/10.1016/j.jcrc.2016.09.012> PMID: 27732921
13. Allen BC, Stubbs KJ, Dixon WE. Characterization of the Time-Varying Nature of Electromechanical Delay During FES-Cycling. *IEEE Trans Neural Syst Rehabil Eng*. 2020; 28(10):2236–45. <https://doi.org/10.1109/TNSRE.2020.3017444> PMID: 32804654
14. Cavalcante JGT, de Almeida Ventura A, de Jesus Ferreira LG, de Sousa AMM, de Sousa Neto IV, de Cássia Marqueti R, et al. Hip and Knee Joint Angles Determine Fatigue Onset during Quadriceps Neuromuscular Electrical Stimulation. *Applied Bionics and Biomechanics*. 2022; 2022:4612867. <https://doi.org/10.1155/2022/4612867> PMID: 35937098
15. Cavalcante JGT, Marqueti RdC, Corrigan P, de Sousa AMM, Bottaro M, Babault N, et al. The effects of knee and hip joint angles on patellar tendon loading during quadriceps neuromuscular electrical stimulation. *Translational Sports Medicine* 2021; 4(5):587–96.
16. Gerrits KH, Maganaris CN, Reeves ND, Sargeant AJ, Jones DA, de Haan A. Influence of knee joint angle on muscle properties of paralyzed and nonparalyzed human knee extensors. *Muscle Nerve*. 2005; 32(1):73–80. <https://doi.org/10.1002/mus.20328> PMID: 15795891
17. Ventura A, Gomes L, Cavalcante J, Vieira D, Sousa CV, Marqueti RC, et al. Does Electrode Sensor Positioning over Motor Points Affect Different Portions of Quadriceps Muscle Architecture during Sub-maximal Evoked Torque? *Journal of Sensors*. 2023; 2023:7.
18. Abe T, Kumagai K, Brechue WF. Fascicle length of leg muscles is greater in sprinters than distance runners. *Med Sci Sports Exerc*. 2000; 32(6):1125–9. <https://doi.org/10.1097/00005768-200006000-00014> PMID: 10862540
19. Alegre LM, Ferri-Morales A, Rodriguez-Casares R, Aguado X. Effects of isometric training on the knee extensor moment-angle relationship and vastus lateralis muscle architecture. *Eur J Appl Physiol*. 2014; 114(11):2437–46. <https://doi.org/10.1007/s00421-014-2967-x> PMID: 25099962
20. Maeo S, Huang M, Wu Y, Sakurai H, Kusagawa Y, Sugiyama T, et al. Greater Hamstrings Muscle Hypertrophy but Similar Damage Protection after Training at Long versus Short Muscle Lengths. *Med Sci Sports Exerc*. 2021; 53(4):825–37. <https://doi.org/10.1249/MSS.0000000000002523> PMID: 33009197
21. Gordon AM, Huxley AF, Julian FJ. The variation in isometric tension with sarcomere length in vertebrate muscle fibres. *J Physiol*. 1966; 184(1):170–92. <https://doi.org/10.1113/jphysiol.1966.sp007909> PMID: 5921536
22. de Sousa AMM, Cavalcante JGT, Bottaro M, Vieira DCL, Babault N, Geremia JM, et al. The Influence of Hip and Knee Joint Angles on Quadriceps Muscle-Tendon Unit Properties during Maximal Voluntary Isometric Contraction. *Int J Environ Res Public Health*. 2023; 20(5). <https://doi.org/10.3390/ijerph20053947> PMID: 36900958
23. Fukutani A, Misaki J, Isaka T. Relationship between joint torque and muscle fascicle shortening at various joint angles and intensities in the plantar flexors. *Sci Rep*. 2017; 7(1):290. <https://doi.org/10.1038/s41598-017-00485-1> PMID: 28331221
24. Moo EK, Leonard TR, Herzog W. The sarcomere force-length relationship in an intact muscle-tendon unit. *J Exp Biol*. 2020; 223(Pt 6).
25. Hansen EA, Lee HD, Barrett K, Herzog W. The shape of the force-elbow angle relationship for maximal voluntary contractions and sub-maximal electrically induced contractions in human elbow flexors. *J Biomech*. 2003; 36(11):1713–8. [https://doi.org/10.1016/s0021-9290\(03\)00167-2](https://doi.org/10.1016/s0021-9290(03)00167-2) PMID: 14522213
26. Marsh E, Sale D, McComas AJ, Quinlan J. Influence of joint position on ankle dorsiflexion in humans. *J Appl Physiol Respir Environ Exerc Physiol*. 1981; 51(1):160–7. <https://doi.org/10.1152/jappl.1981.51.1.160> PMID: 7263411

27. Bertolasi L, De Grandis D, Bongiovanni LG, Zanette GP, Gasperini M. The influence of muscular lengthening on cramps. *Ann Neurol*. 1993; 33(2):176–80. <https://doi.org/10.1002/ana.410330207> PMID: 8434879
28. Foure A, Ogier AC, Guye M, Gondin J, Bendahan D. Muscle alterations induced by electrostimulation are lower at short quadriceps femoris length. *Eur J Appl Physiol*. 2020; 120(2):325–35. <https://doi.org/10.1007/s00421-019-04277-5> PMID: 31807900
29. Allen DG, Lamb GD, Westerblad H. Skeletal muscle fatigue: cellular mechanisms. *Physiol Rev*. 2008; 88(1):287–332. <https://doi.org/10.1152/physrev.00015.2007> PMID: 18195089
30. Enoka RM, Duchateau J. Translating Fatigue to Human Performance. *Med Sci Sports Exerc*. 2016; 48(11):2228–38. <https://doi.org/10.1249/MSS.0000000000000929> PMID: 27015386
31. Fitzgerald GK, Piva SR, Irrgang JJ. A modified neuromuscular electrical stimulation protocol for quadriceps strength training following anterior cruciate ligament reconstruction. *J Orthop Sports Phys Ther*. 2003; 33(9):492–501. <https://doi.org/10.2519/jospt.2003.33.9.492> PMID: 14524508
32. Delitto A, Rose SJ, McKowen JM, Lehman RC, Thomas JA, Shively RA. Electrical stimulation versus voluntary exercise in strengthening thigh musculature after anterior cruciate ligament surgery. *Phys Ther*. 1988; 68(5):660–3. <https://doi.org/10.1093/ptj/68.5.660> PMID: 3258994
33. Fahey TD, Harvey M, Schroeder RV, Ferguson F. Influence of sex differences and knee joint position on electrical stimulation-modulated strength increases. *Med Sci Sports Exerc*. 1985; 17(1):144–7. PMID: 3872399
34. Liberati A, Altman DG, Tetzlaff J, Mulrow C, Gotzsche PC, Ioannidis JP, et al. The PRISMA statement for reporting systematic reviews and meta-analyses of studies that evaluate health care interventions: explanation and elaboration. *PLoS Med*. 2009; 6(7):e1000100. <https://doi.org/10.1371/journal.pmed.1000100> PMID: 19621070
35. Moher D, Shamseer L, Clarke M, Ghersi D, Liberati A, Petticrew M, et al. Preferred reporting items for systematic review and meta-analysis protocols (PRISMA-P) 2015 statement. *Syst Rev*. 2015; 4:1. <https://doi.org/10.1186/2046-4053-4-1> PMID: 25554246
36. Mendoza C, Kraemer P, Herrera P, Burdiles P, Sepulveda D, Nunez E, et al. [Clinical guidelines using the GRADE system (Grading of Recommendations Assessment, Development and Evaluation)]. *Rev Med Chil*. 2017; 145(11):1463–70.
37. Mela P, Veltink PH, Huijting PA. The influence of stimulation frequency and ankle joint angle on the moment exerted by human dorsiflexor muscles. *J Electromyogr Kinesiol*. 2001; 11(1):53–63. [https://doi.org/10.1016/s1050-6411\(00\)00036-5](https://doi.org/10.1016/s1050-6411(00)00036-5) PMID: 11166608
38. Babault N, Pousson M, Michaut A, Van Hoecke J. Effect of quadriceps femoris muscle length on neural activation during isometric and concentric contractions. *J Appl Physiol* (1985). 2003; 94(3):983–90. <https://doi.org/10.1152/jappphysiol.00717.2002> PMID: 12571130
39. Rassier DE. The effects of length on fatigue and twitch potentiation in human skeletal muscle. *Clin Physiol*. 2000; 20(6):474–82. <https://doi.org/10.1046/j.1365-2281.2000.00283.x> PMID: 11100395
40. Sarabon N, Kozinc Z, Perman M. Establishing Reference Values for Isometric Knee Extension and Flexion Strength. *Front Physiol*. 2021; 12:767941. <https://doi.org/10.3389/fphys.2021.767941> PMID: 34721087
41. Pincivero DM, Salfetnikov Y, Campy RM, Coelho AJ. Angle- and gender-specific quadriceps femoris muscle recruitment and knee extensor torque. *J Biomech*. 2004; 37(11):1689–97. <https://doi.org/10.1016/j.jbiomech.2004.02.005> PMID: 15388311
42. Skurvydas A, Brazaitis M, Kamandulis S, Sipaviciene S. Peripheral and central fatigue after muscle-damaging exercise is muscle length dependent and inversely related. *J Electromyogr Kinesiol*. 2010; 20(4):655–60. <https://doi.org/10.1016/j.jelekin.2010.02.009> PMID: 20347333
43. Place N, Maffiuletti NA, Ballay Y, Lepers R. Twitch potentiation is greater after a fatiguing submaximal isometric contraction performed at short vs. long quadriceps muscle length. *J Appl Physiol* (1985). 2005; 98(2):429–36. <https://doi.org/10.1152/jappphysiol.00664.2004> PMID: 15475602
44. Fitch S, McComas A. Influence of human muscle length on fatigue. *J Physiol*. 1985; 362:205–13. <https://doi.org/10.1113/jphysiol.1985.sp015671> PMID: 4020687
45. Bremner CB, Holcomb WR, Brown CD. Knee joint angle influences neuromuscular electrical stimulation-induced torque. *Athletic Training and Sports Health Care*. 2015a; 7(4):165–72.
46. McNeal DR, Baker LL. Effects of joint angle, electrodes and waveform on electrical stimulation of the quadriceps and hamstrings. *Ann Biomed Eng*. 1988; 16(3):299–310. <https://doi.org/10.1007/BF02368005> PMID: 3261142
47. Bremner CB, Holcomb WR, Brown CD, Miller MG. Assessment of Comfort During NMES-induced Quadriceps Contractions at Two Knee Joint Angles. *Athletic Training & Sports Health Care*. 2015b; 7(5):181–9.



48. Gavin JP, Cooper M, Wainwright TW. The effects of knee joint angle on neuromuscular activity during electrostimulation in healthy older adults. *J Rehabil Assist Technol Eng*. 2018; 5:2055668318779506. <https://doi.org/10.1177/2055668318779506> PMID: 31191945
49. Debenham MIB, Power GA. The influence of preceding activity and muscle length on voluntary and electrically evoked contractions. *Appl Physiol Nutr Metab*. 2019; 44(3):301–8. <https://doi.org/10.1139/apnm-2018-0104> PMID: 30189152
50. Frigon A, Thompson CK, Johnson MD, Manuel M, Hornby TG, Heckman CJ. Extra forces evoked during electrical stimulation of the muscle or its nerve are generated and modulated by a length-dependent intrinsic property of muscle in humans and cats. *J Neurosci*. 2011; 31(15):5579–88. <https://doi.org/10.1523/JNEUROSCI.6641-10.2011> PMID: 21490198
51. Higgins JPT, Cochrane Collaboration. *Cochrane handbook for systematic reviews of interventions*. Second edition. ed. Hoboken, NJ: Wiley-Blackwell; 2020. pages cm p.
52. de Ruiter CJ, Hoddenbach JG, Huurnink A, de Haan A. Relative torque contribution of vastus medialis muscle at different knee angles. *Acta Physiol (Oxf)*. 2008; 194(3):223–37. <https://doi.org/10.1111/j.1748-1716.2008.01888.x> PMID: 18691348
53. Scott W, Adams C, Fisher J, Fisher S, Jones K, Mathieu B. Electrically elicited quadriceps muscle torque: Comparison at three knee angles. *Physiother Theory Pract*. 2019:1–7.
54. Kooistra RD, de Ruiter CJ, de Haan A. Conventionally assessed voluntary activation does not represent relative voluntary torque production. *Eur J Appl Physiol*. 2007; 100(3):309–20. <https://doi.org/10.1007/s00421-007-0425-8> PMID: 17357793
55. de Ruiter CJ, Kooistra RD, Paalman MI, de Haan A. Initial phase of maximal voluntary and electrically stimulated knee extension torque development at different knee angles. *J Appl Physiol (1985)*. 2004; 97(5):1693–701. <https://doi.org/10.1152/jappphysiol.00230.2004> PMID: 15180971
56. Kooistra RD, de Ruiter CJ, de Haan A. Muscle activation and blood flow do not explain the muscle length-dependent variation in quadriceps isometric endurance. *J Appl Physiol (1985)*. 2005; 98(3):810–6. <https://doi.org/10.1152/jappphysiol.00712.2004> PMID: 15489262
57. Harnie J, Cattagni T, Cornu C, McNair P, Jubeau M. Acute effect of tendon vibration applied during isometric contraction at two knee angles on maximal knee extension force production. *PLoS One*. 2020; 15(11):e0242324. <https://doi.org/10.1371/journal.pone.0242324> PMID: 33186411
58. Ando R, Tomita A, Watanabe K, Akima H. Knee joint angle and vasti muscle electromyograms during fatiguing contractions. *Clin Physiol Funct Imaging*. 2018; 38(4):566–72. <https://doi.org/10.1111/cpf.12372> PMID: 27194453
59. Lee SC, Braim A, Becker CN, Prosser LA, Tokay AM, Binder-Macleod SA. Diminished fatigue at reduced muscle length in human skeletal muscle. *Muscle Nerve*. 2007; 36(6):789–97. <https://doi.org/10.1002/mus.20873> PMID: 17691103
60. Marion MS, Wexler AS, Hull ML, Binder-Macleod SA. Predicting the effect of muscle length on fatigue during electrical stimulation. *Muscle Nerve*. 2009; 40(4):573–81. <https://doi.org/10.1002/mus.21459> PMID: 19626673
61. Sacco P, McIntyre DB, Jones DA. Effects of length and stimulation frequency on fatigue of the human tibialis anterior muscle. *J Appl Physiol (1985)*. 1994; 77(3):1148–54. <https://doi.org/10.1152/jappl.1994.77.3.1148> PMID: 7836116
62. Yanase K, Hasegawa S, Nakamura M, Tanaka H, Umehara J, Araki K, et al. Acute effect of electrical stimulation on the infraspinatus muscle using different types of muscle contractions and shoulder joint positions. *Edizioni Minerva Medica*. 2017; 176(12):8.
63. Frasson VB, Rassier DE, Herzog W, Vaz MA. Dorsiflexor and plantarflexor torque-angle and torque-velocity relationships of classical ballet dancers and volleyball players. *Revista Brasileira de Biomecânica* 2007; 8:31–6.
64. Chan AY, Lee FL, Wong PK, Wong CY, Yeung SS. Effects of knee joint angles and fatigue on the neuromuscular control of vastus medialis oblique and vastus lateralis muscle in humans. *Eur J Appl Physiol*. 2001; 84(1–2):36–41. <https://doi.org/10.1007/s004210000326> PMID: 11394251
65. Bampouras TM, Reeves ND, Baltzopoulos V, Maganaris CN. The role of agonist and antagonist muscles in explaining isometric knee extension torque variation with hip joint angle. *Eur J Appl Physiol*. 2017; 117(10):2039–45. <https://doi.org/10.1007/s00421-017-3693-y> PMID: 28803367
66. Noorkoiv M, Nosaka K, Blazevich AJ. Neuromuscular adaptations associated with knee joint angle-specific force change. *Med Sci Sports Exerc*. 2014; 46(8):1525–37. <https://doi.org/10.1249/MSS.000000000000269> PMID: 24504427
67. Kubo K, Ohgo K, Takeishi R, Yoshinaga K, Tsunoda N, Kanehisa H, et al. Effects of isometric training at different knee angles on the muscle-tendon complex in vivo. *Scand J Med Sci Sports*. 2006; 16(3):159–67. <https://doi.org/10.1111/j.1600-0838.2005.00450.x> PMID: 16643193

68. Pedersen KK, Madsen MK, Hvid LG, Overgaard K. Concentric strength training at optimal or short muscle length improves strength equally but does not reduce fatigability of hamstring muscles. *Physiol Rep*. 2019; 7(16):e14196. <https://doi.org/10.14814/phy2.14196> PMID: 31423755
69. O'Sullivan K, McAuliffe S, Deburca N. The effects of eccentric training on lower limb flexibility: a systematic review. *Br J Sports Med*. 2012; 46(12):838–45. <https://doi.org/10.1136/bjsports-2011-090835> PMID: 22522590
70. de Boer MD, Maganaris CN, Seynnes OR, Rennie MJ, Narici MV. Time course of muscular, neural and tendinous adaptations to 23 day unilateral lower-limb suspension in young men. *J Physiol*. 2007; 583(Pt 3):1079–91. <https://doi.org/10.1113/jphysiol.2007.135392> PMID: 17656438
71. Visscher RMS, Rossi D, Friesenbichler B, Dohm-Acker M, Rosenheck T, Maffiuletti NA. Vastus medialis and lateralis activity during voluntary and stimulated contractions. *Muscle Nerve*. 2017; 56(5):968–74. <https://doi.org/10.1002/mus.25542> PMID: 28029696
72. Maffiuletti NA, Lepers R. Quadriceps femoris torque and EMG activity in seated versus supine position. *Med Sci Sports Exerc*. 2003; 35(9):1511–6. <https://doi.org/10.1249/01.MSS.0000084426.03247.93> PMID: 12972870
73. Herzog W, Abrahamse SK, ter Keurs HE. Theoretical determination of force-length relations of intact human skeletal muscles using the cross-bridge model. *Pflugers Arch*. 1990; 416(1–2):113–9. <https://doi.org/10.1007/BF00370231> PMID: 2352828
74. Hali K, Zero AM, Rice CL. Effect of ankle joint position on triceps surae contractile properties and motor unit discharge rates. *Physiol Rep*. 2021; 8(24):e14680. <https://doi.org/10.14814/phy2.14680> PMID: 33356017
75. Landin D, Thompson M, Reid M. Knee and Ankle Joint Angles Influence the Plantarflexion Torque of the Gastrocnemius. *J Clin Med Res*. 2015; 7(8):602–6. <https://doi.org/10.14740/jocmr2107w> PMID: 26124905
76. Merlet AN, Cattagni T, Cornu C, Jubeau M. Effect of knee angle on neuromuscular assessment of plantar flexor muscles: A reliability study. *PLoS One*. 2018; 13(3):e0195220. <https://doi.org/10.1371/journal.pone.0195220> PMID: 29596480
77. Balnave CD, Allen DG. The effect of muscle length on intracellular calcium and force in single fibres from mouse skeletal muscle. *J Physiol*. 1996; 492 (Pt 3)(Pt 3):705–13. <https://doi.org/10.1113/jphysiol.1996.sp021339> PMID: 8734983
78. Miyamoto N, Oda S. Effect of joint angle on mechanomyographic amplitude during unfused and fused tetani in the human biceps brachii muscle. *Eur J Appl Physiol*. 2005; 95(2–3):221–8. <https://doi.org/10.1007/s00421-005-1359-7> PMID: 16086146
79. Pethick J, Winter SL, Burnley M. Fatigue-induced changes in knee-extensor torque complexity and muscle metabolic rate are dependent on joint angle. *Eur J Appl Physiol*. 2021; 121(11):3117–31. <https://doi.org/10.1007/s00421-021-04779-1> PMID: 34355267
80. Rassier DE, Tubman LA, MacIntosh BR. Length-dependent potentiation and myosin light chain phosphorylation in rat gastrocnemius muscle. *Am J Physiol*. 1997; 273(1 Pt 1):C198–204. <https://doi.org/10.1152/ajpcell.1997.273.1.C198> PMID: 9252457
81. Akima H, Tomita A, Ando R. Effect of knee joint angle on the neuromuscular activation of the quadriceps femoris during repetitive fatiguing contractions. *J Electromyogr Kinesiol*. 2019; 49:102356. <https://doi.org/10.1016/j.jelekin.2019.102356> PMID: 31557704
82. MacNaughton MB, MacIntosh BR. Impact of length during repetitive contractions on fatigue in rat skeletal muscle. *Pflugers Arch*. 2007; 455(2):359–66. <https://doi.org/10.1007/s00424-007-0273-8> PMID: 17473930
83. Ichikawa K, Jiang Y, Sugi M, Togo S, Yokoi H. Joint angle based motor point tracking stimulation for surface FES: A Study on biceps brachii. *Med Eng Phys*. 2021; 88:9–18. <https://doi.org/10.1016/j.medengphy.2020.11.014> PMID: 33485518
84. Conley CEW, Mattacola CG, Jochimsen KN, Dressler EV, Lattermann C, Howard JS. A Comparison of Neuromuscular Electrical Stimulation Parameters for Postoperative Quadriceps Strength in Patients After Knee Surgery: A Systematic Review. *Sports Health*. 2021; 13(2):116–27. <https://doi.org/10.1177/1941738120964817> PMID: 33428557
85. Vaz MA, Frohlich M, Junior D, Schildt A, Thome PRO, Muller AF, et al. Development and reliability of a new system for bedside evaluation of non-volitional knee extension force. *Med Eng Phys*. 2021; 98:28–35. <https://doi.org/10.1016/j.medengphy.2021.10.007> PMID: 34848035
86. Toth MJ, Tourville TW, Voigt TB, Choquette RH, Anair BM, Falcone MJ, et al. Utility of Neuromuscular Electrical Stimulation to Preserve Quadriceps Muscle Fiber Size and Contractility After Anterior Cruciate Ligament Injuries and Reconstruction: A Randomized, Sham-Controlled, Blinded Trial. *Am J Sports Med*. 2020; 48(10):2429–37. <https://doi.org/10.1177/0363546520933622> PMID: 32631074

87. Rassier DE, MacIntosh BR. Length-dependent twitch contractile characteristics of skeletal muscle. *Can J Physiol Pharmacol.* 2002; 80(10):993–1000. <https://doi.org/10.1139/y02-127> PMID: 12450066
88. Gravholt A, Herskind J, Kloster CT, Hvid LG, Overgaard K. Torque and Discomfort During Electrically Evoked Muscle Contractions in Healthy Young Adults: Influence of Stimulation Current and Pulse Frequency. *Arch Phys Med Rehabil.* 2023; 104(3):444–50. <https://doi.org/10.1016/j.apmr.2022.09.004> PMID: 36167118