



**HAL**  
open science

# Output-feedback stabilization of a class of $n+m$ linear hyperbolic ODE-PDE-ODE systems

Jean Auriol, Federico Bribiesca Argomedeo

► **To cite this version:**

Jean Auriol, Federico Bribiesca Argomedeo. Output-feedback stabilization of a class of  $n+m$  linear hyperbolic ODE-PDE-ODE systems. 4th IFAC Conference of Modelling, Identification and Control of nonlinear systems, 2024, Lyon, France. hal-04611654

**HAL Id: hal-04611654**

**<https://hal.science/hal-04611654v1>**

Submitted on 13 Jun 2024

**HAL** is a multi-disciplinary open access archive for the deposit and dissemination of scientific research documents, whether they are published or not. The documents may come from teaching and research institutions in France or abroad, or from public or private research centers.

L'archive ouverte pluridisciplinaire **HAL**, est destinée au dépôt et à la diffusion de documents scientifiques de niveau recherche, publiés ou non, émanant des établissements d'enseignement et de recherche français ou étrangers, des laboratoires publics ou privés.

# Output-feedback stabilization of a class of $n + m$ linear hyperbolic ODE-PDE-ODE systems

Jean Auriol,\* Federico Bribiesca Argomede,\*\*

\* *Université Paris-Saclay, CNRS, CentraleSupélec, Laboratoire des Signaux et Systèmes, 91190, Gif-sur-Yvette, France.*

\*\* *INSA Lyon, Université Claude Bernard Lyon 1, Ecole Centrale de Lyon, CNRS, Ampère, UMR5005, 69621 Villeurbanne, France*

---

**Abstract:** In this paper, we design an output-feedback controller to stabilize  $n + m$  hetero-directional transport partial differential equations (PDEs) coupled on both domain boundaries to ordinary differential equations (ODEs). This class of systems can represent, for instance, actuator and load dynamics at the boundaries of a hyperbolic system. The actuator is located at the connection point between the PDE and one of the ODEs, and we consider anti-collocated PDE measurements. We first design a state-observer by combining the backstepping methodology with time-delay system approaches. We then introduce a state feedback controller using analogous techniques before designing the wanted output-feedback control law.

*Keywords:* PDE-ODE-PDE, backstepping, time-delay systems, stabilization, observer design

---

## 1. INTRODUCTION

Several recent contributions have focused on the control of interconnected systems encompassing hyperbolic partial differential equations (PDEs) and ordinary differential equations (ODEs), given their prevalence in diverse industrial processes, such as electric power transmission systems (Schmuck et al., 2014) and traffic networks (Yu and Krstić, 2023). This category of networks is particularly adept at modeling complex industrial processes as the propagation of torsional waves in drilling systems (Aarsnes and Shor, 2018) or deepwater construction vessels (Stensgaard et al., 2010). These interconnected networks are commonly referred to as ODE-PDE-ODE systems, where the ODEs capture the dynamics of actuators and loads.

Most constructive control methodologies for interconnected PDE-ODE systems predominantly adopt the backstepping approach. In the seminal paper (Krstic and Smyshlyaev, 2008), a re-interpretation of the classical Finite Spectrum Assignment (Manitius and Olbrot, 1979) was proposed, modeling ODEs with input delays as PDE-ODE interconnections. The consequential impact of this innovative approach has been far-reaching, enabling the formulation of methodologies for designing observers, controllers, and parameter estimation methods across a diverse spectrum of interconnected systems. Noteworthy applications include systems with varying delays (Bekiaris-Liberis and Krstic, 2013; Bresch-Pietri, 2012) and cascades of PDEs (Auriol et al., 2019; Redaud et al., 2021), or cascaded interconnections of hyperbolic PDE-ODE systems, such as (Aamo, 2012; Deutscher and Gabriel, 2021; Auriol et al., 2018; Hasan et al., 2016; Zhou and Tang, 2012). More recently, constructive results have emerged for non-cascaded PDE-ODE systems. In particular, a stabilizing state-feedback control law has been proposed in (Di Meglio

et al., 2018; Wang et al., 2018). A PDE-ODE-PDE configuration was considered in (Auriol et al., 2020).

For ODE-PDE-ODE configurations, an output-feedback controller has been designed in (Deutscher et al., 2018) based on assumptions that guarantee the existence of a Byrnes-Isidori normal form for one of the ODE. These restrictions are partially avoided in (Bou Saba et al., 2019), where the control design relies on a *rewriting of the interconnection as a time-delay system*. This approach was later extended in (Wang and Krstic, 2020; Auriol and Bribiesca Argomede, 2022; Redaud et al., 2024) to encompass a state observer. Some recent developments have also been obtained for interconnected PDE systems with non-linear ODEs using a modular design of tracking controllers (Irscheid et al., 2021). In all these contributions, the authors assumed the control input was acting on the ODE state. The cases where the control input acts at the connection point between the PDE and one of the ODEs have not been well studied in the literature, and most of the contributions neglect the actuator dynamics in such a configuration (Auriol et al., 2018; Auriol and Di Meglio, 2020; de Andrade et al., 2018). In (Deutscher et al., 2018), a state observer was designed for an ODE-PDE-ODE system where the measurement corresponds to the PDE state. In the case of a  $2 \times 2$  PDE system, a stabilizing controller was designed in (Auriol et al., 2023).

In this paper, we extend these results to design a stabilizing output-feedback controller for a system of  $n + m$  linear first-order hyperbolic Partial Differential Equations coupled with Ordinary Differential Equations at both boundaries of a one-dimensional spatial domain. The control input acts at one of the PDE boundaries, and the available PDE measurements are anti-collocated. The presented approach expands upon the methodology introduced in (Au-

riol et al., 2023) by combining the backstepping technique with time-delay approaches. Using an invertible integral transformation, we map the system into a simpler target system. Then, we design a state observer for this target system using a time-delay representation. A state-feedback controller is obtained using analogous techniques. Finally, the output-feedback controller is obtained by combining the state-feedback controller with the previously designed observer after adding an adequate low-pass filter to guarantee the existence of robustness margins (Auriol et al., 2023).

*Notations* The state space is  $\chi = \mathbb{R}^p \times L^2([0, 1]; \mathbb{R})^{n+m} \times \mathbb{R}^q$ , where  $p, n, m, q$  are positive integers. For  $(X_0, u, v, X_1) \in \chi$ , we introduce the corresponding  $\chi$ -norm

$$\|(X_0, u, v, X_1)\|_{\chi}^2 = \|X_0\|_{\mathbb{R}^p}^2 + \|u\|_{L^2}^2 + \|v\|_{L^2}^2 + \|X_1\|_{\mathbb{R}^q}^2.$$

We denote  $s$ , the Laplace variable.

## 2. PROBLEM STATEMENT

### 2.1 Presentation of the system

In this paper, we consider a  $n+m$  linear hetero-directional hyperbolic system coupled through its boundaries with linear ODEs:

$$\dot{X}_0(t) = A_0 X_0(t) + E_0 v(t, 0), \quad (1)$$

$$u(t, 0) = C_0 X_0(t) + Q v(t, 0) + U(t), \quad (2)$$

$$u_t + \Lambda^+ u_x = \Sigma^{++}(x)u(t, x) + \Sigma^{+-}(x)v(t, x), \quad (3)$$

$$v_t - \Lambda^- v_x = \Sigma^{-+}(x)u(t, x) + \Sigma^{--}(x)v(t, x), \quad (4)$$

$$v(t, 1) = R u(t, 1) + C_1 X_1(t), \quad (5)$$

$$\dot{X}_1(t) = A_1 X_1(t) + E_1 u(t, 1), \quad (6)$$

defined for a.e.  $(t, x) \in [0, +\infty) \times [0, 1]$ . The state of the system is  $(X_0(t), u(t, \cdot), v(t, \cdot), X_1(t)) \in \chi$ . The initial condition is taken as  $((X_0)_0, u_0, v_0, (X_1)_0) \in \chi$  and we consider weak solutions to (1)-(6) (Bastin and Coron, 2016). The open-loop system is well-posed in the sense of (Bastin and Coron, 2016, Theorem A.6, page 254). The matrices  $\Lambda^+$  and  $\Lambda^-$  are diagonal and represent the transport velocities. We have  $\Lambda^+ = \text{diag}(\lambda_i)$  and  $\Lambda^- = \text{diag}(\mu_i)$  and we assume that their coefficients satisfy  $-\mu_m < \dots < -\mu_1 < 0 < \lambda_1 < \dots < \lambda_n$ . The case of equal transport velocities or zero velocities can be overcome under additional assumptions following the methodology presented in (de Andrade et al., 2024; Chen et al., 2023). The spatially-varying matrices  $\Sigma^{\cdot}$  are continuous (each coefficient of the matrix is a continuous function). With no loss of generality, we assume that the matrices  $\Sigma^{++}$  and  $\Sigma^{--}$  have zero diagonal elements (Hu et al., 2019). The different coupling matrices satisfy  $A_0 \in \mathbb{R}^{p \times p}$ ,  $E_0 \in \mathbb{R}^{p \times m}$ ,  $C_0 \in \mathbb{R}^{n \times p}$ ,  $A_1 \in \mathbb{R}^{q \times q}$ ,  $E_1 \in \mathbb{R}^{q \times n}$ ,  $C_1 \in \mathbb{R}^{m \times q}$ ,  $R \in \mathbb{R}^{m \times n}$ ,  $Q \in \mathbb{R}^{n \times m}$ . The control input  $U(t)$  belongs to  $\mathbb{R}^n$ . We consider the case of anti-collocated measurement, i.e., the measurement  $y(t)$  is defined by

$$y(t) \doteq u(t, 1). \quad (7)$$

Due to the symmetry of the system, measuring the  $v(t, 0)$ -state would not change the nature of the problem. Compared to (Deutscher et al., 2018), we consider that the control input is located at the junction between the ODE  $X_0$  and the PDE. This configuration has not been well-studied in the literature and requires specific control approaches.

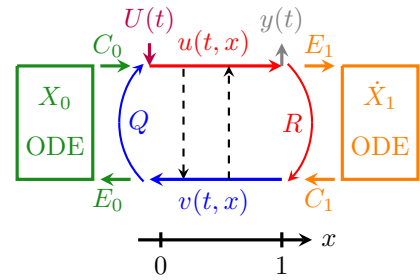


Fig. 1. Schematic representation of the system (1)-(6).

### 2.2 General objectives and assumptions

The objective of this paper is to design an output feedback controller for the system (1)-(6) based on the available measurement  $y(t)$  given by equation (7). Even if the velocities are considered constant here, the proposed methodology could be extended to the case of spatially-varying transport velocities (following the approach given in (Hu et al., 2019)). We now make the following assumption

*Assumption 1.* The system defined for all  $i \in [1, n]$  by

$$z(t) = \sum_{k=1}^m \sum_{\ell=1}^n Q_{ik} R_{k\ell} z(t - \frac{1}{\mu_k} - \frac{1}{\lambda_\ell}), \quad (8)$$

is exponentially stable.

Assumption 1 constitutes a reasonable assumption since it prevents system (1)-(6) from having an asymptotic chain of eigenvalues with non-negative real parts (Hale and Verduyn Lunel, 1993; Auriol and Di Meglio, 2019). It has been shown in (Logemann et al., 1996) that having an open-loop transfer function with an infinite number of poles on the closed right half-plane implies no (delay-)robustness margins in closed-loop (i.e., the introduction of any arbitrarily small delay in the actuation will destabilize the closed-loop system). Therefore, Assumption 1 is slightly stronger than a necessary condition for delay-robust stabilization. If the delays are rationally independent<sup>1</sup>, Assumption 1 is equivalent to the following condition (Hale and Verduyn Lunel, 1993):  $\sup_{\theta_{k\ell} \in [0, 2\pi]^{n \times m}} \text{Sp}(\sum_{k=1}^m \sum_{\ell=1}^n Q_{ik} R_{k\ell} \exp(j\theta_{k\ell})) < 1$ , where  $\text{Sp}$  denotes the spectral radius,  $j$  is the imaginary unit, and the  $\theta_{k\ell}$  belong to  $[0, 2\pi]^{n \times m}$ . This condition is simplified if the delays are rationally dependent. Furthermore, since the spectral radius of a matrix is upper-bounded by any norm of the matrix, easy to compute sufficient conditions for this spectral radius condition to hold can be derived using different norms of the matrices involved at the cost of increased conservatism. Similarly to what has been done in (Auriol et al., 2023), we will need additional stabilizability and detectability conditions (Assumptions 2 and 7) that will be given later.

## 3. OBSERVER DESIGN

This section is dedicated to designing a state observer for the system governed by equations (1)-(6), leveraging the available measurement given in equation (7). To simplify

<sup>1</sup> Extending the variable  $z$ , it is always possible to rewrite the system in a form with either a single delay, or where all delays are rationally independent (Hale and Verduyn Lunel, 1993, Chapter 9).

the computations and the design of the observer, we will work with a target system obtained from (1)-(6) using a backstepping transformation. This transformation relocates the in-domain coupling terms, denoted as  $\Sigma^{\cdot}$ , to the actuated boundary.

### 3.1 Backstepping transformation

Inspired by (Hu et al., 2019), we use an integral transformation to move the local coupling terms  $\Sigma^{\cdot}$  to the actuated boundary (in the form of integral terms). Consider the Volterra transformation  $\mathcal{T}$ , similar to the one introduced in (Hu et al., 2019; Auriol and Di Meglio, 2019; Auriol and Briescia Argomedo, 2022)

$$X_0(t) = \xi(t) - \int_0^1 L_1(\nu)\alpha(\nu) + L_2(\nu)\beta(\nu)dy, \quad (9)$$

$$u(t, x) = \alpha(t, x) - \int_x^1 L^{\alpha\alpha}(x, \nu)\alpha(\nu)d\nu - \int_x^1 L^{\alpha\beta}(x, \nu)\beta(\nu)d\nu + \gamma_\alpha(x)X_1(t), \quad (10)$$

$$v(t, x) = \beta(t, x) - \int_x^1 L^{\beta\alpha}(x, \nu)\alpha(\nu)dy, - \int_x^1 L^{\beta\beta}(x, \nu)\beta(\nu)d\nu + \gamma_\beta(x)X_1(t), \quad (11)$$

$$X_1(t) = X_1(t), \quad (12)$$

where the kernels are bounded functions defined either on  $\mathcal{T}_u = \{(x, z) \in [0, 1]^2, x \leq z\}$ , or  $[0, 1]$ . This transformation rewrites  $(X_0, u, v, X_1) = \mathcal{T}(\xi, \alpha, \beta, X_1)$ . Denoting  $\Lambda = \text{diag}(\Lambda^+, -\Lambda^-)$ ,  $\Sigma = \begin{pmatrix} \Sigma^{++} & \Sigma^{+-} \\ \Sigma^{-+} & \Sigma^{--} \end{pmatrix}$  and  $L = \begin{pmatrix} L^{\alpha\alpha} & L^{\alpha\beta} \\ L^{\beta\alpha} & L^{\beta\beta} \end{pmatrix}$ ,  $\gamma = (\gamma_\alpha, \gamma_\beta)$ , we obtain

$$\Lambda L_x + L_\nu \Lambda = \Sigma(x)L, \quad \Lambda \gamma_x(x) = \Sigma(x)\gamma - \gamma^\top A_1, \quad (13)$$

$$(L_1(x))_x \Lambda^+ = A_0 L_1(x) + E_0 L^{\beta\alpha}(0, x), \quad (14)$$

$$(L_2(x))_x \Lambda^- = -A_0 L_2(x) - E_0 L^{\beta\beta}(0, x), \quad (15)$$

with the boundary conditions

$$\Lambda L(x, x) - L(x, x)\Lambda = \Sigma(x), \quad (16)$$

$$L_1(0) = 0, \quad L_2(0)\Lambda^- = L_1(0)\Lambda^+ Q + E_0, \quad (17)$$

and  $\gamma_\alpha(1) = 0$ ,  $\gamma_\beta(1) = C_1$ . Finally, we define  $L_{ij}^{\alpha\alpha}(0, \nu)$  for  $i \leq j$  by

$$L_{ij}^{\alpha\alpha}(0, \nu) = (QL^{\beta\alpha}(0, \nu) + C_0 L_1(\nu))_{ij}. \quad (18)$$

To this set of equations, we add arbitrary values for  $L_{ij}^{\alpha\alpha}(x, 1)$  (when  $i > j$ ) and  $L_{ij}^{\beta\beta}(x, 1)$  (when  $i > j$ ) and  $L_{ij}^{\beta\beta}(0, \nu)$  (when  $i \leq j$ ). Reinterpreting the ODEs in (14)-(15) as PDEs evolving in the triangular domain  $\mathcal{T}_u$  with horizontal characteristic lines (since there is only an evolution along the  $x$  axis), it is possible to adjust the results from (Di Meglio et al., 2018, Theorem 3.2) to guarantee that the set of PDEs and ODEs (13)-(18) has a unique solution which is piecewise continuous. The boundedness of transformation (10)-(12) is a direct consequence of the structure of the transform (identities, integral operator and matrices) and the regularity of the different kernels. Its invertibility is a consequence of the structure of the transformation, which is block triangular with the blocks on the diagonal being either identities (for the ODEs) or invertible Volterra operators (for the PDEs).

### 3.2 Target system

The invertible backstepping transformation (10)-(12) maps the original system (1)-(6) to the following target system

$$\dot{\xi}(t) = A_0 \xi(t) + G_3 \alpha(t, 1) + G_4 X_1(t), \quad (19)$$

$$\alpha(t, 0) = Q\beta(t, 0) + C_0 \xi(t) + (Q\gamma_\beta(0) - \gamma_\alpha(0))X_1(t) + \int_0^1 F^\alpha(\nu)\alpha(t, \nu) + F^\beta(\nu)\beta(t, \nu)d\nu + U(t), \quad (20)$$

$$\alpha_t(t, x) + \Lambda^+ \alpha_x(t, x) = G_1(x)\alpha(t, 1), \quad (21)$$

$$\beta_t(t, x) - \Lambda^- \beta_x(t, x) = G_2(x)\alpha(t, 1), \quad (22)$$

$$\beta(t, 1) = R\alpha(t, 1), \quad \dot{X}_1(t) = A_1 X_1(t) + E_1 \alpha(t, 1). \quad (23)$$

The functions  $G_1$  and  $G_2$  satisfy

$$G_1(x) = \int_x^1 L^{\alpha\alpha}(x, \nu)G_1(\nu) + L^{\alpha\beta}(x, \nu)G_2(\nu)d\nu - L^{\alpha\alpha}(x, 1)\Lambda^+ + L^{\alpha\beta}(x, 1)\Lambda^- R - \gamma_\alpha(x)E_1, \quad (24)$$

$$G_2(x) = \int_x^1 L^{\beta\alpha}(x, \nu)G_1(\nu) + L^{\beta\beta}(x, \nu)G_2(\nu)d\nu - L^{\beta\alpha}(x, 1)\Lambda^+ + L^{\beta\beta}(x, 1)\Lambda^- R - \gamma_\beta(x)E_1. \quad (25)$$

The set of equations (24)-(25) has a unique solution (Volterra equations of the second kind (Yoshida, 1960)). The matrices  $G_3$  and  $G_4$  are defined by  $G_3(x) = L_2(x, 1)\Lambda^- R - L_1(x, 1)\Lambda^+ + \int_0^1 (L_1(x)G_1(\nu) + L_2(x)G_2(\nu))d\nu$ , and  $G_4(x) = E_0 \gamma_\beta(0)$ . Finally, the matrix  $F^\beta$  the matrix  $F^\alpha$  are defined by  $F^\alpha(\nu) = L^{\alpha\alpha}(0, \nu) - QL^{\beta\alpha}(0, \nu) - C_0 L_1(\nu)$ , and  $F^\beta(\nu) = L^{\alpha\beta}(0, \nu) - QL^{\beta\beta}(0, \nu) - C_0 L_2(\nu)$ . Note that  $F^\alpha$  is **strictly lower triangular** due to equation (18). The measurement  $y(t)$  remains unchanged.

### 3.3 Time-delay formulation

Applying the method of characteristics (see (Auriol and Di Meglio, 2019; Auriol et al., 2023)), we can show that for all  $t > \tau = \frac{1}{\lambda_1} + \frac{1}{\mu_1}$

$$\alpha(t, 1) = \sum_{i=1}^N F_i^\alpha \alpha(t - \tau_i, 1) + \sum_{i=1}^n F_i^\xi \xi(t - \frac{1}{\lambda_i}) + \sum_{i=1}^n F_i^X X_1(t - \frac{1}{\lambda_i}) + \int_0^\tau H(\nu)\alpha(t - \nu, 1)d\nu + \sum_{i=1}^n F_i^U U(t - \frac{1}{\lambda_i}), \quad (26)$$

where  $N \in \mathbb{N}$ , and where the  $\tau_i \leq \tau$  are positive delays that depend on the  $\lambda_i$  and  $\mu_i$ , the matrices  $F_i^\alpha$ ,  $F_i^\xi$ ,  $F_i^X$ ,  $F_i^X$ ,  $F_i^U$ , and  $H$  can be explicitly computed following the methodology of (Auriol and Di Meglio, 2019). Since the functions  $U(t)$  and  $y(t) = \alpha(t, 1)$  are known, we can consider  $y_1$  as an available measurement, where  $y_1$  is defined by

$$y_1(t) = y(t) - \sum_{i=1}^N F_i^\alpha y(t - \tau_i) - \int_0^\tau H(\nu)y(t - \nu)d\nu - \sum_{i=1}^n F_i^U U(t - \frac{1}{\lambda_i}) = \sum_{i=1}^n F_i^X \xi(t - \frac{1}{\lambda_i}) + F_i^X X_1(t - \frac{1}{\lambda_i}). \quad (27)$$

Define  $Z$  as the concatenation of the vectors  $\xi$  and  $X_1$  and introduce the matrix  $A_o = \begin{pmatrix} A_0 & G_4 \\ 0_{q \times p} & A_1 \end{pmatrix}$ . We obtain

$$\dot{Z}(t) = A_o Z(t) + G_Z \alpha(t, 1), \quad (28)$$

where  $G_Z = \begin{pmatrix} G_3 \\ E_1 \end{pmatrix}$ . Defining  $F_i^o = (F_i^\xi \ F_i^X)$ , we have  $y_1(t) = \sum_{i=1}^n F_i^o Z(t - \frac{1}{\lambda_i})$ . Applying Duhamel's formula to equation (28), we obtain for  $t > \frac{1}{\lambda_1}$

$$y_1(t) = \sum_{i=1}^n F_i^o e^{-\frac{A_o}{\lambda_i} t} \left( Z(t) - \int_{t-\frac{1}{\lambda_i}}^t e^{A_o(t-\nu)} G_Z y(\nu) d\nu \right).$$

We make the following assumption

*Assumption 2.* There exists  $L_o$  such that the matrix  $A_o + L_o \sum_{i=1}^n F_i^o e^{-\frac{A_o}{\lambda_i} t}$  is Hurwitz.

This assumption can be seen as a detectability condition necessary to reconstruct the ODE states.

### 3.4 Observer equations

We can now design the wanted state-observer for the target system (19)-(23). Herein, the notation  $\hat{\cdot}$  is introduced as a superscript to denote the estimated states, while  $\tilde{\cdot}$  represents the error state, defined as the difference between the actual state and the observer state. The primary objective is to achieve the convergence of the estimated state to the real state, or equivalently, the convergence of the error state to zero, with respect to the  $\chi$ -norm. Subsequently, a state observer is constructed to replicate these dynamics, incorporating specific output injection terms. The observer state  $(\hat{\xi}, \hat{\alpha}, \hat{\beta}, \hat{X}_1)$  (or equivalently  $(\hat{Z}, \hat{\alpha}, \hat{\beta})$ , where  $\hat{Z}$  as the concatenation of  $\hat{\xi}$  and  $\hat{X}_1$ ) is the solution of a set of equations that is a copy of the original dynamics to which we add dynamical output injection gains. We denote  $\tilde{y}(t) = y(t) - \hat{\alpha}(t, 1)$ , the difference between the real output and the observer output. The observer equations read as

$$\begin{aligned} \dot{\hat{Z}}(t) &= A_o \hat{Z}(t) + G_Z y(t) - L_o (y_1(t) - \sum_{i=1}^n F_i^o e^{-\frac{A_o}{\lambda_i} t} \hat{Z}(t)) \\ &\quad - L_o \sum_{i=1}^n F_i^o e^{-\frac{A_o}{\lambda_i} t} \int_{t-\frac{1}{\lambda_i}}^t e^{A_o(t-\nu)} G_Z y(\nu) d\nu, \end{aligned} \quad (29)$$

$$\begin{aligned} \hat{\alpha}(t, 0) &= Q \hat{\beta}(t, 0) + C_0 \hat{\xi}(t) + (Q \gamma_\beta(0) - \gamma_\alpha(0)) \hat{X}_1(t) \\ &\quad + \int_0^1 F^\alpha(\nu) \hat{\alpha}(t, \nu) + F^\beta(\nu) \hat{\beta}(t, \nu) dy - \mathcal{O}_0(\tilde{y}(t)) \\ &\quad + U(t), \end{aligned} \quad (30)$$

$$\partial_t \hat{\alpha}(t, x) + \Lambda^+ \partial_x \hat{\alpha}(t, x) = G_1(x) y(t), \quad (31)$$

$$\partial_t \hat{\beta}(t, x) - \Lambda^- \partial_x \hat{\beta}(t, x) = G_2(x) y(t), \quad (32)$$

$$\hat{\beta}(t, 1) = R \hat{\alpha}(t, 1), \quad (33)$$

with any (arbitrary) initial conditions in  $\chi$ . The operator  $\mathcal{O}_o$  still has to be defined. The error system is obtained by subtracting the observer dynamics from the real one. We obtain

$$\dot{\tilde{Z}}(t) = A_o \tilde{Z}(t) + L_o \sum_{i=1}^n F_i^o e^{-\frac{A_o}{\lambda_i} t} \tilde{Z}(t), \quad (34)$$

$$\tilde{\alpha}(t, 0) = C_0 \tilde{\xi}(t) + Q \tilde{\beta}(t, 0) + (Q \gamma_\beta(0) - \gamma_\alpha(0)) \tilde{X}_1(t)$$

$$+ \int_0^1 F^\alpha(\nu) \tilde{\alpha}(t, \nu) + F^\beta(\nu) \tilde{\beta}(t, \nu) d\nu + \mathcal{O}_0(\tilde{y}(t)), \quad (35)$$

$$\partial_t \tilde{\alpha}(t, x) + \Lambda^+ \partial_x \tilde{\alpha}(t, x) = 0, \quad (36)$$

$$\partial_t \tilde{\beta}(t, x) - \Lambda^- \partial_x \tilde{\beta}(t, x) = 0, \quad (37)$$

$$\tilde{\beta}(t, 1) = R \tilde{\alpha}(t, 1). \quad (38)$$

To guarantee the exponential stability of the error system, it is sufficient to show the convergence of  $\tilde{\xi}$ ,  $\tilde{\alpha}(t, 1)$  and  $\tilde{X}_1$  to zero. More precisely, we have the following lemma

*Lemma 3.* If  $\tilde{\xi}(t)$ ,  $\tilde{\alpha}(t, 1)$  and  $\tilde{X}_1(t)$  exponentially converge to zero, then the state  $(\tilde{\xi}, \tilde{\alpha}, \tilde{\beta}, \tilde{X}_1)$  converges to zero in the sense of the  $\chi$ -norm. This implies the convergence of the observer state to the real state.

**Proof.** Due to the stability of the observer operators and using the transport structure of (36) and (37), the exponential convergence of  $\tilde{X}_1$  and  $\tilde{\alpha}(t, 1)$  to zero imply the exponential convergence of the states  $\tilde{\alpha}(t, x)$  and  $\tilde{\beta}(t, x)$ .

### 3.5 Design of the operator $\mathcal{O}_0$

We now want to define the operator  $\mathcal{O}_0$  such that  $\tilde{\xi}$ ,  $\tilde{\alpha}(t, 1)$  and  $\tilde{X}_1$  exponentially converge to zero. Since  $A_o + L_o \sum_{i=1}^n F_i^o e^{-\frac{A_o}{\lambda_i} t}$  is Hurwitz due to Assumption 2, we already have the exponential stability of  $\tilde{\xi}$  and  $\tilde{X}_1$ . Following the methodology proposed in (Auriol and Di Meglio, 2019), we can apply the method of characteristics to obtain for  $t > \tau$

$$\begin{aligned} \tilde{\alpha}(t, 1) &= \sum_{i=1}^N F_i^\alpha \tilde{\alpha}(t - \tau_i, 1) + \sum_{i=1}^n F_i^\xi \tilde{\xi}(t - \frac{1}{\lambda_i}) + \bar{F}_i^X \\ \tilde{X}_1(t - \frac{1}{\lambda_i}) &+ \int_0^\tau \bar{H}(\nu) \tilde{\alpha}(t - \nu, 1) d\nu + \mathcal{O}_0(\tilde{y}(t)), \end{aligned} \quad (39)$$

where the matrices  $F_i^\alpha$ ,  $F_i^\xi$ ,  $\bar{F}_i^X$  and  $\bar{H}$  are identical to the ones given in equation (26). Thus, we choose  $\mathcal{O}_0(\tilde{y}(t))$  as

$$\begin{aligned} \mathcal{O}_0(\tilde{y}(t)) &= - \sum_{i=1}^N F_i^\alpha \tilde{y}(t - \tau_i) \\ &\quad - \int_0^\tau H(\nu) \tilde{y}(t - \nu) d\nu. \end{aligned} \quad (40)$$

We can now write the following theorem

*Theorem 4.* Consider the operators  $\mathcal{O}_0$  defined by equation (40). Consider that Assumption 1 and Assumption 2 are verified. Define the observer state  $(\hat{X}_0, \hat{u}, \hat{v}, \hat{X}_1) = \mathcal{T}(\hat{\xi}, \hat{\alpha}, \hat{\beta}, \hat{X}_1)$ , where  $(\hat{\xi}, \hat{\alpha}, \hat{\beta}, \hat{X}_1)$  is the solution of the system (29)-(33). Then the state  $(\hat{X}_0, \hat{u}, \hat{v}, \hat{X}_1)$  exponentially converges to  $(X_0, u, v, X_1)$  in the sense of the  $\chi$ -norm.

**Proof.** We have already shown that  $\tilde{X}_1$  and  $\tilde{\xi}$  exponentially converge to zero. With this choice of operator,  $\tilde{\alpha}(t, 1)$  exponentially converges to zero. Consequently, Lemma 3 implies that the state  $(\tilde{\xi}_0, \tilde{\alpha}, \tilde{\beta}, \tilde{X}_1)$  exponentially converges to zero for the  $\chi$ -norm. Using the invertibility and boundedness of the linear transformation  $\mathcal{T}$ , we conclude the proof.

Note that the observer operator  $\mathcal{O}_0$  may not be strictly proper (due to the cancellation of the boundary reflection terms) and the observer system may consequently

be sensitive to delays in the measurements. Low-pass filtering of the measurement will lead to a strictly proper observer operator while still guaranteeing the convergence of the estimated states towards the real states. This will consequently allow robustness margins to exist (Auriol et al., 2023). This will be done when designing the output-feedback controller in the next section.

Compared to (Deutscher et al., 2018), our observer does not require assumptions that guarantee the existence of a Byrnes–Isidori normal form for ODE  $X_1$ . Instead, it relies on the necessary detectability condition stated in Assumption 2

#### 4. OUTPUT FEEDBACK CONTROLLER

In this section, we first design a state-feedback controller to stabilize (1)-(6). This state-feedback controller will be combined with the state-observer designed in Section 3 to obtain an output-feedback control law. Although the target system (19)-(23) was helpful in designing the state-observer, it may be convenient to transform the coupling term  $G_1(x)\alpha(t, 1)$  by a term that depends on  $\alpha(t, 0)$  to design a stabilizing controller. Therefore, before designing the control input, we will first modify the target system (19)-(23) using a new backstepping transformation.

##### 4.1 Backstepping transformations and target system

Consider the following transformations defined by

$$\alpha(t, x) = \check{\alpha}(t, x) - \int_x^1 \check{L}(x, y)\check{\alpha}(t, y)dy \quad (41)$$

$$\check{\alpha}(t, x) = \bar{\alpha}(t, x) - \int_0^1 \bar{L}(x, y)\bar{\alpha}(t, y)dy, \quad (42)$$

The kernel  $\check{L}$  is a lower triangular matrix (i.e.,  $(\check{L})_{ij} = 0$  if  $i < j$ ) whose components are bounded piecewise continuous functions. The kernel  $\bar{L}$  is a strictly upper-triangular matrix (i.e.,  $\bar{L}_{ij} = 0$  if  $i \geq j$ ) whose components are bounded piecewise continuous functions. The transformation (41) is invertible since it is a Volterra transform. The kernel  $\bar{L}$  satisfies the following set of equations if  $i \geq j$

$$\Lambda^+ \partial_x \bar{L}(x, y) + \partial_y \bar{L}(x, y)\Lambda^+ = 0, \quad (43)$$

$$\Lambda^+ \bar{L}(x, x) - \bar{L}(x, x)\Lambda^+ = 0, \quad (44)$$

$$\begin{aligned} (\bar{L}(x, 1))_{ij} &= (G_1(x)(\Lambda^+)^{-1})_{ij} \\ &+ \int_x^1 \sum_{k=1}^n \check{L}_{ik}(x, y)\check{G}_{kj}(y)\frac{1}{\lambda_j}dy, \end{aligned} \quad (45)$$

where the matrix  $\check{G}(x)$  is strictly upper-triangular (i.e. we have  $\check{G}_{i,j}(x) = 0$  if  $i \geq j$ ) and satisfies for all  $x \in [0, 1]$

$$\begin{aligned} (\check{G}(x))_{ij} &= (G_1(x))_{ij} \\ &+ \int_x^1 \sum_{k=1}^n \check{L}_{ik}(x, y)\check{G}_{kj}(y)dy \quad \text{if } i < j. \end{aligned} \quad (46)$$

*Lemma 5.* The set of equations (43)-(46) has a unique solution in  $\mathcal{T}_u$ , which is bounded and piecewise continuous.

**Proof.** The proof is a consequence of the triangular structure of the different matrices appearing in the equations. For  $j = 1$ , equation (45) can be rewritten as

$$(\bar{L}(x, 1))_{i1} = (G_1(x)(\Lambda^+)^{-1})_{i,1}.$$

Combining this boundary condition with equation (44), we can solve equation (43) to compute  $\check{L}_{i1}$  on its domain of definition. For  $j = 2$ , equation (46) can be rewritten as

$$(\check{G}(x))_{12} = (G_1(x))_{12} + \int_x^1 \check{L}_{11}(x, y)\check{G}_{12}(y)dy,$$

which is a Volterra equation that can be solved to obtain  $\check{G}_{12}(y)$  (Yoshida, 1960). This in turns gives the kernels  $\check{L}_{i2}$  using (45). Iterating the process allows us to compute the kernel matrix  $\check{L}$  and the function  $\check{G}$ .

The kernel  $\bar{L}$  satisfies the following set of equations

$$\Lambda^+ \partial_x \bar{L}(x, y) + \partial_y \bar{L}(x, y)\Lambda^+ = 0, \quad \bar{L}(1, y) = 0, \quad (47)$$

$$(\bar{L}(x, 1))_{ij} = (\check{G}(x)(\Lambda^+)^{-1})_{ij} \text{ if } i < j, \quad (48)$$

Due to its triangular structure, we can obtain a direct expression of  $\bar{L}$  (and consequently show its existence) using the method of characteristics. The invertibility of the transformation (42) is a consequence of the triangular structure of the kernel  $\bar{L}$ . The transformations (41)-(42) map the system (19)-(23) to the target system

$$\dot{\xi} = \bar{A}_0\xi + G_3\bar{\alpha}(t, 1) + G_4X_1(t), \quad (49)$$

$$\begin{aligned} \bar{\alpha}(t, 0) &= C_0\xi(t) + Q\beta(t, 0) + (Q\gamma_\beta(0) - \gamma_\alpha(0))X_1(t) + \\ &\int_0^1 \bar{F}^\alpha(y)\bar{\alpha}(t, y)dy + \int_0^1 F^\beta(y)\beta(t, y)dy + U(t), \end{aligned} \quad (50)$$

$$\partial_t \bar{\alpha}(t, x) + \Lambda^+ \partial_x \bar{\alpha}(t, x) = G_5(x)\bar{\alpha}(t, 0), \quad (51)$$

$$\partial_t \beta(t, x) - \Lambda^- \partial_x \beta(t, x) = G_2(x)\bar{\alpha}(t, 1), \quad (52)$$

$$\beta(t, 1) = R\bar{\alpha}(t, 1), \quad \dot{X}_1 = A_1X_1 + E_1\bar{\alpha}(t, 1), \quad (53)$$

where

$$\begin{aligned} \bar{F}^\alpha(y) &= F^\alpha(y) + \bar{L}(0, y) + \check{L}(0, y) + \int_0^1 \check{L}(0, \nu)\bar{L}(\nu, y)d\nu \\ &- \int_0^1 F^\alpha(\nu)\bar{L}(\nu, y)d\nu - \int_0^y F^\alpha(\nu)\check{L}(\nu, y)d\nu \\ &+ \int_0^1 \int_1^\eta F^\alpha(\nu)\check{L}(\nu, \eta)\bar{L}(\eta, y)d\nu d\eta. \end{aligned}$$

The upper-triangular matrix function  $G_5$  is defined by

$$G_5(x) = \bar{L}(x, 0)\Lambda^+ + \int_0^1 \bar{L}(x, y)G_5(y)dy.$$

We denote  $\mathcal{T}_1$  the combination of the transformations (41)-(42) such that  $(\xi, \bar{\alpha}, \beta, X_1) = \mathcal{T}_1(X_0, u, v, X_1)$ . We have the following lemma

*Lemma 6.* If  $\xi(t)$ ,  $\bar{\alpha}(t, 0)$  and  $X_1(t)$  exponentially converge to zero, then the state  $(\xi, \alpha, \beta, X_1)$  converges to zero in the sense of the  $\chi$ -norm. This implies the stabilization of (1)-(6).

**Proof.** The proof is analogous to the proof of Lemma 3.

##### 4.2 Time-delay formulation and state-feedback control law

Similarly to what has been done to obtain equation (26), we can adjust the methodology from (Auriol and Di Meglio, 2019) to rewrite  $(\bar{\alpha}(t, 0), \xi, X_1)$  as the solution of the following integral differential systems

$$\bar{\alpha}(t, 0) = \sum_{i=1}^N P_i^\alpha \bar{\alpha}(t - \tau_i, 0) + \int_0^\tau Q_\alpha(\nu)\bar{\alpha}(t - \nu, 0)d\nu$$

$$+ C_0\xi(t) + (Q\gamma_\beta(0) - \gamma_\alpha(0))X_1(t) + U(t), \quad (54)$$

$$\begin{aligned} \dot{\xi}(t) &= A_0\xi + \sum_{i=1}^n P_i^\xi \bar{\alpha}(t - \tau_i, 0) \\ &+ \int_0^\tau Q_\xi(\nu) \bar{\alpha}(t - \nu, 0) d\nu + G_4 X_1(t), \end{aligned} \quad (55)$$

$$\begin{aligned} \dot{X}_1(t) &= A_1 X_1(t) + \sum_{i=1}^n P_i^X \bar{\alpha}(t - \frac{1}{\lambda_i}, 0) \\ &+ \int_0^\tau Q_X(\nu) \bar{\alpha}(t - \nu, 0) d\nu, \end{aligned} \quad (56)$$

where the matrices  $P^\alpha, P^\xi, P^X, Q_\alpha, Q_\xi$  and  $Q_X$  can be explicitly computed following the methodology of (Auriol and Di Meglio, 2019). To design a state-feedback control law, we first simplify equation (54) by choosing

$$\begin{aligned} U(t) &= \bar{U}(t) - \sum_{i=1}^N P_i^\alpha \bar{\alpha}(t - \tau_i, 0) - \int_0^\tau Q_\alpha(\nu) \bar{\alpha}(t - \nu, 0) d\nu \\ &- C_0\xi(t) - (Q\gamma_\beta(0) - \gamma_\alpha(0))X_1(t), \end{aligned} \quad (57)$$

so that we have  $\bar{\alpha}(t, 0) = \bar{U}(t)$ . Note that, due to the cancellation of the reflection term  $\sum_{i=1}^N P_i^\alpha \bar{\alpha}(t - \tau_i, 0)$ , the control law  $U(t)$  will not be strictly proper. Consequently, it may be necessary to low-pass filter it to guarantee the robustness of the closed-loop system (Auriol et al., 2023). Inspired by (Bekiaris-Liberis and Krstic, 2010), we define the following change of coordinates

$$\begin{aligned} \bar{X}_1(t) &= X_1(t) + \tau^2 \int_0^1 \left( \int_0^x e^{-A_1\tau(x-s)} Q_X(\tau(1-s)) ds \right) \\ &\bar{U}(t - (1-x)\tau) dx, \end{aligned} \quad (58)$$

$$\begin{aligned} \bar{\xi}(t) &= \xi(t) + \tau^2 \int_0^1 \left( \int_0^x e^{-A_0\tau(x-s)} \bar{Q}_\xi(\tau(1-s)) ds \right) \\ &\bar{U}(t - (1-x)\tau) dx, \end{aligned} \quad (59)$$

where  $\bar{Q}_\xi(\nu) = Q_\xi(\nu) - G_4\tau \int_0^{\frac{1-\nu}{\tau}} e^{-A_1(\tau(1-s)-\nu)} Q_X(\tau(1-s)) ds$ . We obtain

$$\dot{\bar{\xi}}(t) = A_0\bar{\xi}(t) + E_0\gamma_\beta(0)\bar{X}_1(t) + \sum_{i=1}^n P_i^\xi \bar{U}(t - \tau_i + \bar{E}_0\bar{U}(t))$$

$$\dot{\bar{X}}_1(t) = A_1\bar{X}_1(t) + \sum_{i=1}^n P_i^X \bar{U}(t - \frac{1}{\lambda_i}) + \bar{E}_1\bar{U}(t)$$

where  $\bar{E}_1 = \tau \int_0^1 e^{-A_1\tau(1-s)} Q_X(\tau(1-s)) ds$  and  $\bar{E}_0 = \tau \int_0^1 e^{-A_0\tau(1-s)} \bar{Q}_\xi(\tau(1-s)) ds$ . Let us denote

$$X_c(t) = \begin{pmatrix} \bar{\xi}(t) \\ \bar{X}_1(t) \end{pmatrix}, \quad A_c = \begin{pmatrix} A_0 & E_0\gamma_\beta(0) \\ 0 & A_1 \end{pmatrix}.$$

Inspired by (Artstein, 1982), we finally define the state  $Z_c$  as

$$\begin{aligned} Z_c(t) &= X_c(t) + \sum_{i=1}^n \int_{t-\tau_i}^t e^{A_c(t-s-\tau_i)} \begin{pmatrix} P_i^\xi \\ 0 \end{pmatrix} \bar{U}(s) ds \\ &+ \sum_{i=1}^n \int_{t-\frac{1}{\lambda_i}}^t e^{A_c(t-s-\frac{1}{\lambda_i})} \begin{pmatrix} 0 \\ P_i^X \end{pmatrix} \bar{U}(s) ds. \end{aligned} \quad (60)$$

Consequently, we obtain  $\dot{Z}_c(t) = A_c Z_c(t) + \bar{B}\bar{U}(t)$ , with

$$\bar{B} = \begin{pmatrix} \bar{E}_0 \\ \bar{E}_1 \end{pmatrix} + \sum_{i=1}^n \begin{pmatrix} e^{-A_c\tau_i} P_i^\xi \\ e^{-A_c\frac{1}{\lambda_i}} P_i^X \end{pmatrix}.$$

We are led to the following stabilizability assumption

*Assumption 7.* The pair  $(A_c, \bar{B})$  is stabilizable, i.e., there exists  $K_c$  such that  $A_c + \bar{B}K_c$  is Hurwitz.

*Theorem 8.* Consider that Assumptions 1 and 7 are verified. Consider the control law  $U(t)$  defined by eq. (57) where  $\bar{U}(t) = K_c Z_c(t)$ , where  $Z_c$  is defined from  $\bar{X}$  and  $Y$  using transformations (58)-(59) and (60). Then the closed-loop system (1)-(6) is exponentially stable.

**Proof.** The exponential stability of  $Z_c$  implies that  $\bar{U}$  converges to zero. This implies the exponential stability of the state  $\xi$  (using (59)) and  $X_1$  (using (58)). This, in turn, implies the exponential convergence of the state  $\bar{\alpha}(t, 0)$  and consequently of  $(X_0, u, v, X_1)$ .

### 4.3 Output-feedback control law

*Theorem 9.* Consider system (1)-(6) and that Assumptions 1, 7 and 2 are satisfied. Consider the operator  $\mathcal{O}_0$  defined by equation (40). Define the observer states  $(\hat{X}_0, \hat{u}, \hat{v}, \hat{X}_1) = \mathcal{T}(\hat{\xi}, \hat{\alpha}, \hat{\beta}, \hat{\nu})$ , where  $(\hat{\xi}, \hat{\alpha}, \hat{\beta}, \hat{\nu})$  is the solution of the system (29)-(33). Define the state  $(\xi, \bar{\alpha}, \beta, X_1) = \mathcal{T}_1(\hat{X}_0, \hat{u}, \hat{v}, \hat{X}_1)$ . Define  $Z_C$  using transformations (59)-(58) and (60). There exists a low pass filter  $w(s)$  such that the control law defined in the Laplace domain by

$$\begin{aligned} \hat{U}(s) &= \left( - \sum_{i=1}^N P_i^\alpha \bar{\alpha}(t - \tau_i, 0) - \int_0^\tau Q_\alpha(\nu) \bar{\alpha}(t - \nu, 0) d\nu \right. \\ &\left. - C_0\xi(t) - (Q\gamma_\beta(0) - \gamma_\alpha(0))X_1(t) + K_c Z_C(t) \right) w(s) \end{aligned} \quad (61)$$

is strictly proper and exponentially stabilizes (1)-(6).

**Proof.** The closed-loop stability is implied by Theorems 4 and (8). The existence of a low-pass filter that makes the control law strictly proper is shown in (Auriol et al., 2023).

As explained in (Auriol et al., 2023), having a strictly proper controller guarantees the existence of robustness margins for a broad class of perturbations: input delays, uncertainties on the ODE parameters, uncertainties on the transport velocities (Curtain and Zwart, 2012).

## 5. CONCLUDING REMARKS

In this paper, we have designed an output-feedback controller for a class of  $n + m$  linear hyperbolic ODE-PDE-ODE systems for which the PDE subsystem is actuated and measured. The proposed approach combines backstepping transformations and a rewriting of the original system as a time-delay system. We first designed a state observer that was then combined with a state-feedback control law to obtain an output-feedback controller. In future works, we will consider networks of ODE and PDEs with a more complex structure (star-shaped networks).

## REFERENCES

- Aamo, O.M. (2012). Disturbance rejection in 2 x 2 linear hyperbolic systems. *IEEE transactions on automatic control*, 58(5), 1095–1106.
- Aarsnes, U.J.F. and Shor, R.J. (2018). Torsional vibrations with bit off bottom: Modeling, characterization and field data validation. *Journal of Petroleum Science and Engineering*, 163, 712–721.

- Artstein, Z. (1982). Linear systems with delayed controls: a reduction. *IEEE Transactions on Automatic Control*, 27(4), 869–879.
- Auriol, J., Aarsnes, U.J.F., Di Meglio, F., and Shor, R. (2020). Robust control design of underactuated  $2 \times 2$  PDE-ODE-PDE systems. *IEEE control systems letters*, 5(2), 469–474.
- Auriol, J. and Bribiesca Argomedo, F. (2022). Observer design for  $n + m$  linear hyperbolic ODE-PDE-ODE systems. *IEEE Control Systems Letters*, 7, 283–288.
- Auriol, J., Bribiesca Argomedo, F., Bou Saba, D., Di Loreto, M., and Di Meglio, F. (2018). Delay-robust stabilization of a hyperbolic PDE-ODE system. *Automatica*, 95, 494–502.
- Auriol, J., Bribiesca-Argomedo, F., and Di Meglio, F. (2019). Delay robust state feedback stabilization of an underactuated network of two interconnected PDE systems. In *American and Control Conference*.
- Auriol, J., Bribiesca Argomedo, F., and Di Meglio, F. (2023). Robustification of stabilizing controllers for ODE-PDE-ODE systems: a filtering approach. *Automatica*, 147, 110724.
- Auriol, J. and Di Meglio, F. (2019). An explicit mapping from linear first order hyperbolic PDEs to difference systems. *Systems & Control Letters*, 123, 144–150.
- Auriol, J. and Di Meglio, F. (2020). Robust output feedback stabilization for two heterodirectional linear coupled hyperbolic PDEs. *Automatica*, 115, 108896.
- Bastin, G. and Coron, J.M. (2016). *Stability and boundary stabilization of 1-D hyperbolic systems*. Springer.
- Bekiaris-Liberis, N. and Krstic, M. (2010). Stabilization of linear strict-feedback systems with delayed integrators. *Automatica*, 46(11), 1902–1910.
- Bekiaris-Liberis, N. and Krstic, M. (2013). *Nonlinear control under nonconstant delays*. SIAM.
- Bou Saba, D., Bribiesca-Argomedo, F., Di Loreto, M., and Eberard, D. (2019). Strictly proper control design for the stabilization of  $2 \times 2$  linear hyperbolic ODE-PDE-ODE systems. In *2019 IEEE 58th Conference on Decision and Control (CDC)*, 4996–5001. IEEE.
- Besch-Pietri, D. (2012). *Commande robuste de systèmes à retard variable: Contributions théoriques et applications au contrôle moteur*. Ph.D. thesis, Ecole Nationale Supérieure des Mines de Paris.
- Chen, G., Vazquez, R., Qiao, J., and Krstic, M. (2023). Block backstepping for isotactic hyperbolic pdes and multilayer timoshenko beams. *arXiv preprint arXiv:2310.11416*.
- Curtain, R.F. and Zwart, H. (2012). *An introduction to infinite-dimensional linear systems theory*, volume 21. Springer Science & Business Media.
- de Andrade, G., Vazquez, R., Karafyllis, I., and Krstic, M. (2024). Backstepping control of a hyperbolic PDE system with zero characteristic speed states. *IEEE Transactions on Automatic Control*.
- de Andrade, G.A., Vazquez, R., and Pagano, D.J. (2018). Backstepping stabilization of a linearized ODE-PDE rijke tube model. *Automatica*, 96, 98–109.
- Deutscher, J. and Gabriel, J. (2021). A backstepping approach to output regulation for coupled linear wave-ode systems. *Automatica*, 123, 109338.
- Deutscher, J., Gehring, N., and Kern, R. (2018). Output feedback control of general linear heterodirectional hyperbolic ODE-PDE-ODE systems. *Automatica*, 95, 472–480.
- Di Meglio, F., Bribiesca-Argomedo, F., Hu, L., and Krstic, M. (2018). Stabilization of coupled linear heterodirectional hyperbolic PDE-ODE systems. *Automatica*, 87, 281–289.
- Hale, J.K. and Verduyn Lunel, S.M. (1993). *Introduction to functional differential equations*. Springer-Verlag.
- Hasan, A., Aamo, O.M., and Krstic, M. (2016). Boundary observer design for hyperbolic PDE-ODE cascade systems. *Automatica*, 68, 75–86.
- Hu, L., Di Meglio, F., Vazquez, R., and Krstic, M. (2019). Boundary exponential stabilization of 1-dimensional inhomogeneous quasi-linear hyperbolic systems. *SIAM Journal on Control and Optimization*, 57(2), 963–998.
- Irscheid, A., Gehring, N., Deutscher, J., and Rudolph, J. (2021). Observer design for  $2 \times 2$  linear hyperbolic PDEs that are bidirectionally coupled with nonlinear ODEs. In *2021 European Control Conference (ECC)*, 2506–2511. IEEE.
- Krstic, M. and Smyshlyaev, A. (2008). Backstepping boundary control for first-order hyperbolic PDEs and application to systems with actuator and sensor delays. *Systems & Control Letters*, 57(9), 750–758.
- Logemann, H., Rebarber, R., and Weiss, G. (1996). Conditions for robustness and nonrobustness of the stability of feedback systems with respect to small delays in the feedback loop. *SIAM Journal on Control and Optimization*, 34(2), 572–600.
- Manitius, A. and Olbrot, A. (1979). Finite spectrum assignment problem for systems with delays. *IEEE transactions on Automatic Control*, 24(4), 541–552.
- Redaud, J., Auriol, J., and Niculescu, S.I. (2021). Output-feedback control of an underactuated network of interconnected hyperbolic PDE-ODE systems. *Systems and Control letters*.
- Redaud, J., Bribiesca-Argomedo, F., and Auriol, J. (2024). Output regulation and tracking for linear ODE-hyperbolic PDE-ODE systems. *Automatica*, 162, 111503.
- Schmuck, C., Woittennek, F., Gensior, A., and Rudolph, J. (2014). Feed-forward control of an HVDC power transmission network. *IEEE Transactions on Control Systems Technology*, 22(2), 597–606.
- Stensgaard, T., White, C., and Schiffer, K. (2010). Subsea hardware installation from a FDPSO. In *Offshore technology conference*. OnePetro.
- Wang, J. and Krstic, M. (2020). Delay-compensated control of sandwiched ODE-PDE-ODE hyperbolic systems for oil drilling and disaster relief. *Automatica*, 120, 109131.
- Wang, J., Krstic, M., and Pi, Y. (2018). Control of a  $2 \times 2$  coupled linear hyperbolic system sandwiched between 2 ODEs. *International Journal of Robust and Nonlinear Control*, 28(13), 3987–4016.
- Yoshida, K. (1960). *Lectures on differential and integral equations*, volume 10. Interscience Publishers.
- Yu, H. and Krstić, M. (2023). *Traffic Congestion Control by PDE Backstepping*. Springer.
- Zhou, Z. and Tang, X. (2012). Boundary stabilization of a coupled wave-ODE system with internal anti-damping. *International Journal of Control*, 85(11), 1683–1693.