



HAL
open science

Using dileptons to estimate the initial temperature of QCD matter

Greg Jackson

► **To cite this version:**

Greg Jackson. Using dileptons to estimate the initial temperature of QCD matter. Assemblée Générale 2024 du GDR QCD, May 2024, Tours, France. hal-04606519

HAL Id: hal-04606519

<https://hal.science/hal-04606519>

Submitted on 10 Jun 2024

HAL is a multi-disciplinary open access archive for the deposit and dissemination of scientific research documents, whether they are published or not. The documents may come from teaching and research institutions in France or abroad, or from public or private research centers.

L'archive ouverte pluridisciplinaire **HAL**, est destinée au dépôt et à la diffusion de documents scientifiques de niveau recherche, publiés ou non, émanant des établissements d'enseignement et de recherche français ou étrangers, des laboratoires publics ou privés.

Using dileptons to estimate the initial temperature of QCD matter^{1,2}

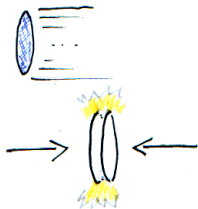
Greg Jackson

Subatech, CNRS/Nantes U./IMT-Atlantique

– AG du GDR QCD • Tours • May 2024 –

¹ based on collaboration w/ J. Churchill, L. Du, C. Gale and S. Jeon

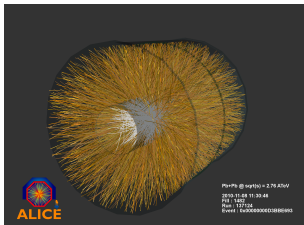
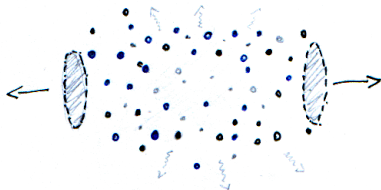
² supported by the ANR under grant No. 22-CE31-0018



$$\mathcal{L} = -\frac{1}{4} F^2 + \sum_f \bar{\psi} (i\not{D} - m_f) \psi$$

w/ non-Abelian fields

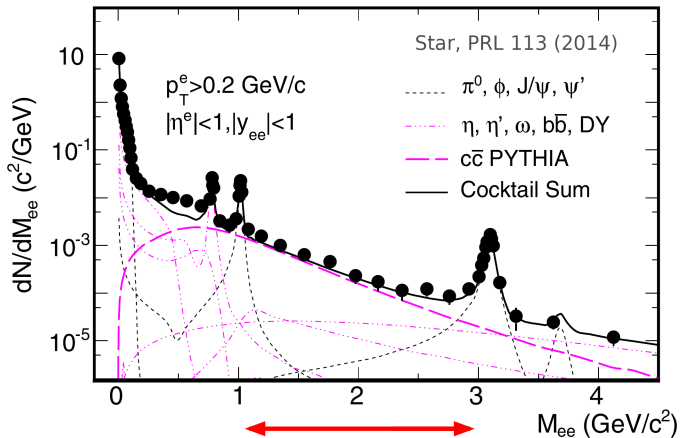
$$F_{\mu\nu} = \frac{1}{ig} [D_\mu, D_\nu]$$



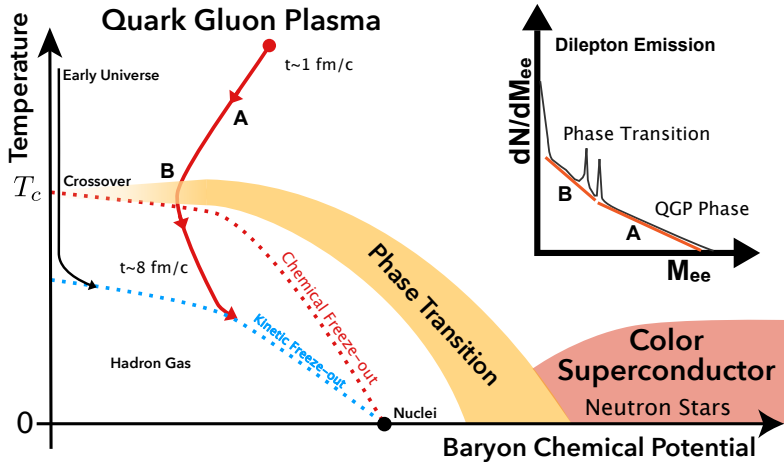
Electromagnetic probes

Invariant mass spectrum of *dileptons pairs*, e.g. from $q\bar{q} \rightarrow \gamma^* \rightarrow e^+e^-$

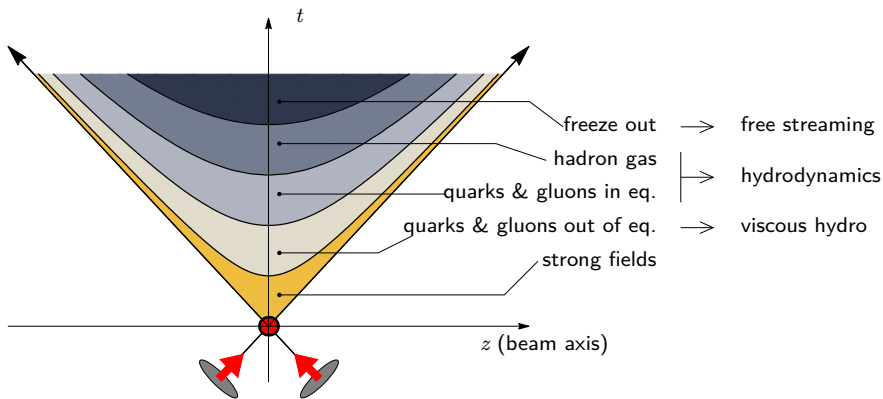
Au + Au $\sqrt{s_{NN}} = 200$ GeV (MinBias)



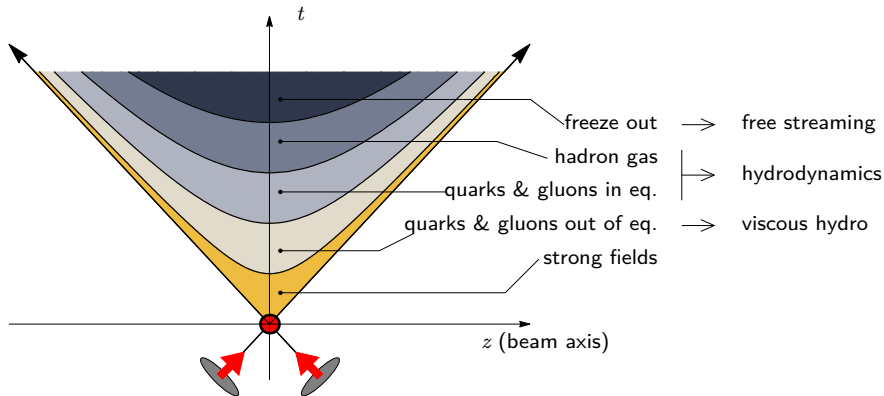
Intermediate Mass Range (IMR) = 1 ... 3 GeV



[STAR collaboration (2024)]



- $\tau \sim 0.2 \text{ fm}/c$ production of light quarks & gluons
 $1 - 2 \text{ fm}/c$ thermalisation rapid (?)
 $2 - 10 \text{ fm}/c$ **quark-gluon plasma**
 $10 - 20 \text{ fm}/c$ hadron gas
 $\tau \rightarrow \infty$ dilute, no further interactions



$\tau \sim 0.2 \text{ fm}/c$	production of light quarks & gluons	} beginning
$1 - 2 \text{ fm}/c$	thermalisation rapid (?)	
$2 - 10 \text{ fm}/c$	quark-gluon plasma	- middle
$10 - 20 \text{ fm}/c$	hadron gas	} end
$\tau \rightarrow \infty$	dilute, no further interactions	

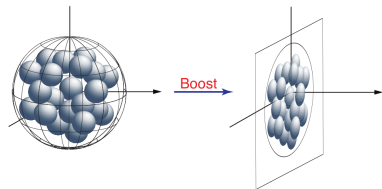
Beginning: (initial conditions)

Pedestrian approach:

sample nucleons with,
Monte Carlo (Glauber)

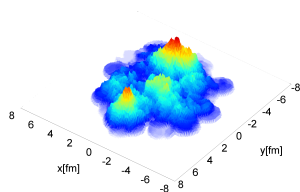
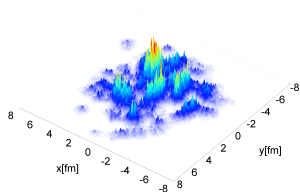
public code: T_RENTO

[Moreland, Bernhard, Bass (2014)]



For the connoisseur: IP-Glasma / KLN / EKRT / ...

(classical YM action in 2D, sat. scale Q_s ... valid at high- E)



[Eskola, Kajantie, Ruuskanen, Tuominen (1999)]

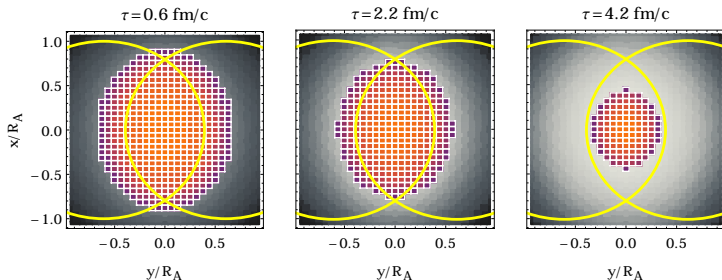
[Schenke, Tribedy, Venugopalan (2012)]

Middle: (hydrodynamical simulation)

from IC: get energy density $e(x, y, \dots)$ at τ_0

[Kurkela, et al. (2019)]

... then discretize & evolve in spacetime:



VISH2+1 = **VI**scous **H**ydrodynamics in (2+1) dim. [Song, Heinz (2008)]
(using SHASTA = SHarp And Smooth Transport Algorithm)

MUSIC = **MUS**(cl) for **I**on **C**ollisions [Schenke, Jeon, Gale (2010)]
(MUSCL = Monotonic Upstream-centered Schemes for Conservation Laws)

End: (“particlization”)

convert $T^{\mu\nu}(X)$ and $J^\mu(X)$ into **hadrons**
(in a way that conserves E and \mathbf{p})

[Huovinen, Petersen (2012)]

[Cooper, Frye (1974)]

$$\text{freeze-out: } E \frac{dN}{d^3\mathbf{p}} = \int_{\Sigma} d\sigma_{\mu} P^{\mu} f_{\text{B/F}} \left(\frac{P \cdot u(X)}{T(X)} \right)$$

(for MUSIC, this is done with iS3D:

<https://github.com/derekeverett/iS3D>)

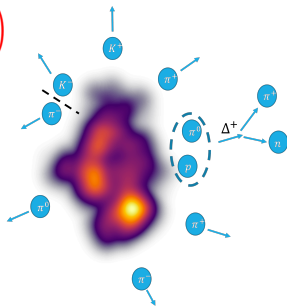
... then hadronic transport, e.g.:

UrQMD = **U**ltra-relativistic **Q**uantum **M**olecular **D**ynamics

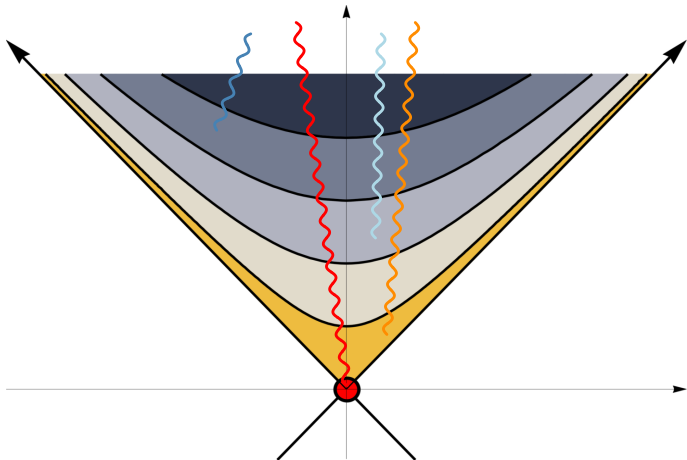
[Bleicher, et al. (1999)]

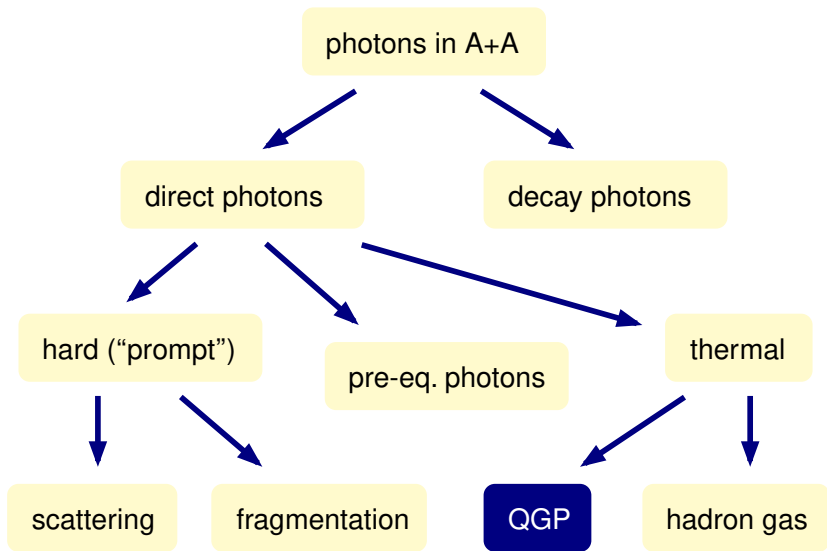
SMASH = **S**imulating **M**any **A**ccelerated **S**trongly interacting **H**adrons

[Weil, et al. (2016)]



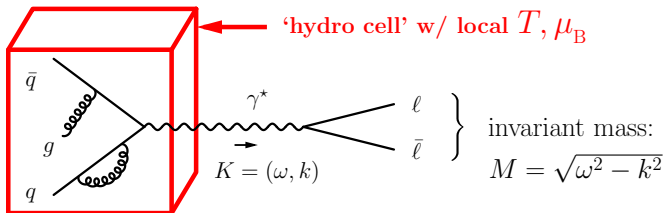
photons in A+A





Basic relations from pert. theory

[McLerran, Toimela (1995)]
[Gale, Kapusta (1991)]



Emission rate per unit volume, $\Gamma_{\ell\bar{\ell}}$, of an **equilibrated** QGP

$$\frac{d\Gamma_{\ell\bar{\ell}}}{d\omega d^3\mathbf{k}} = \frac{\alpha_{\text{em}}^2 \sum_{f=1}^{n_f} Q_f^2}{3\pi^3 M^2 (e^{\omega/T} - 1)} \times B\left(\frac{m_\ell^2}{M^2}\right) \times \rho_V(\omega, k)$$

- Quark charge-fractions: Q_f (in units of the electron charge)
- Kinematic factor: $B(x) \equiv (1 + 2x)\Theta(1 - 4x)\sqrt{1 - 4x}$
- Spectral function $\rho_V \equiv \rho_\mu^\mu$

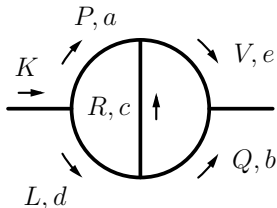
$$\rho_{\mu\nu}(\omega, k) = \text{Im} \left[\Pi_{\mu\nu}^{\text{ret}}(\omega + i0^+, k) \right]$$

QCD corrections

$$\Pi^{\mu\nu} = \left[\sum_{l=0}^{\infty} g_s^{2l} \Pi_{(l)}^{\mu\nu} \right] + O(e^2); \quad \alpha_s = \frac{g_s^2}{4\pi}$$

$$= \text{---} \circ \text{---} + \text{---} \left(\begin{array}{c} | \\ \text{---} \\ | \end{array} \right) \text{---} + \text{---} \left(\begin{array}{c} \text{---} \\ \text{---} \\ \text{---} \end{array} \right) \text{---} + \dots$$

Project 2-loop result onto 'basis' of **master diagrams** and evaluate:



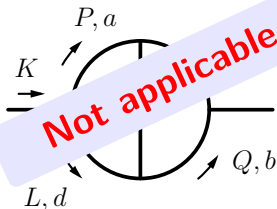
$$\rho_{abcde}^{(m,n)}(\omega, \mathbf{k}) \equiv \text{Im} \oint_{P,Q} \frac{p_0^m q_0^n}{P^{2a} Q^{2b} (K-P-Q)^{2c} (K-P)^{2d} (K-Q)^{2e}}$$

QCD corrections

$$\Pi^{\mu\nu} = \left[\sum_{l=0}^{\infty} g_s^{2l} \Pi_{(l)}^{\mu\nu} \right] + O(e^2); \quad \alpha_s = \frac{g_s^2}{4\pi}$$

$$= \text{tree} + \text{1-loop} + \text{2-loop} + \dots$$

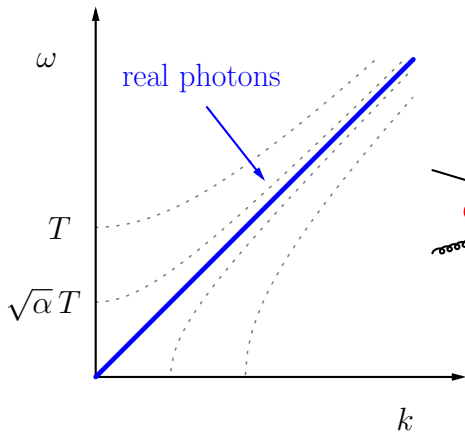
Project 2-loop result onto 'basis' of **master diagrams** to evaluate:



Not applicable for $K^2 \rightarrow 0!$



$$\rho_{abcde}^{(m,n)}(\omega, \mathbf{k}) \equiv \text{Im} \oint_{P,Q} \frac{p_0^m q_0^n}{P^{2a} Q^{2b} (K-P-Q)^{2c} (K-P)^{2d} (K-Q)^{2e}}$$



Thermal Screening

$$\frac{d\sigma}{dt} = \frac{-\pi \alpha_{\text{em}} \alpha_s}{3s^2} \frac{t^2 + s^2}{ts}$$



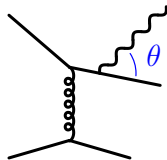
$$+ \dots \sim \alpha_s T^2$$

[Kapusta, Lichard, Seibert (1991)]

[Baier, et al (1992)]

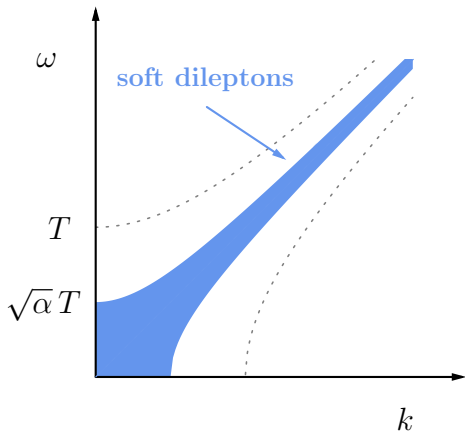
Landau-Pomeranchuk-Migdal (LPM)

$$\int \frac{d \cos \theta}{E(1 - \cos \theta)} = \infty$$



LO: [Arnold, Moore, Yaffe (2001)] ,

NLO: [Ghiglieri, et al (2013)]



LO: [Aurenche, et al (2002)]

NLO: [Ghiglieri, Moore (2014)]

light-like correlator

↓ [Caron-Huot (2009)]

Effective
Field Theory

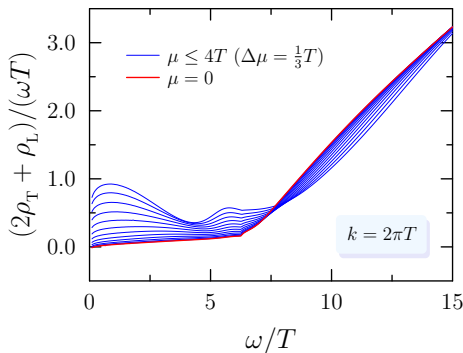
'ladder diagrams' for $M^2 \ll T^2 \rightarrow$ LPM effect + *Hard Thermal Loops*

$$\rho_{\mu\nu}(\omega, \mathbf{k}) = \text{Im} \left[\mu \text{ --- } \left(\text{---} \text{---} \text{---} \right) \text{---} \nu \right]$$

Combine LPM effect with strict 2-loop truncation,

[Ghisoiu, Laine (2014)]

$$\begin{aligned} \rho(\omega, k) \Big|_{\text{resummed}}^{\text{NLO}} &= \rho \Big|^{1\text{-loop}} + \rho \Big|^{2\text{-loop}} + \rho \Big|_{\text{beyond } O(g^2)}^{\text{LPM}} \\ &= \text{diagram 1} + \left(\text{diagram 2} + \text{diagram 3} \right) + \text{diagram 4} \end{aligned}$$



NB: Spectral fncs. can be checked with Euclidean corr. computable on the lattice:

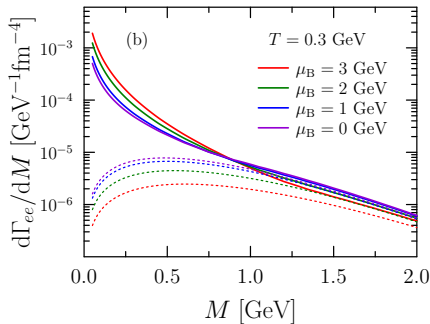
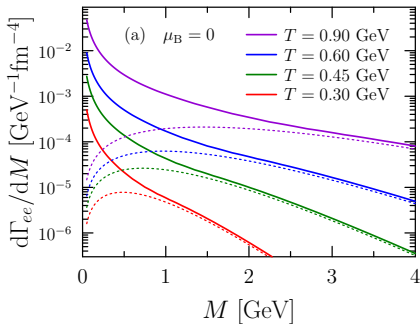
$$G(\tau) = \int_0^\infty d\omega \rho(\omega) \mathcal{K}(\omega, \tau)$$

⇒ see [GJ, Laine (2019)]
and [Ali, et al. (2024)]

(ρ_V determined for $\omega > k$ in [Laine (2013)] , and $\omega < k$ in [GJ (2019)])

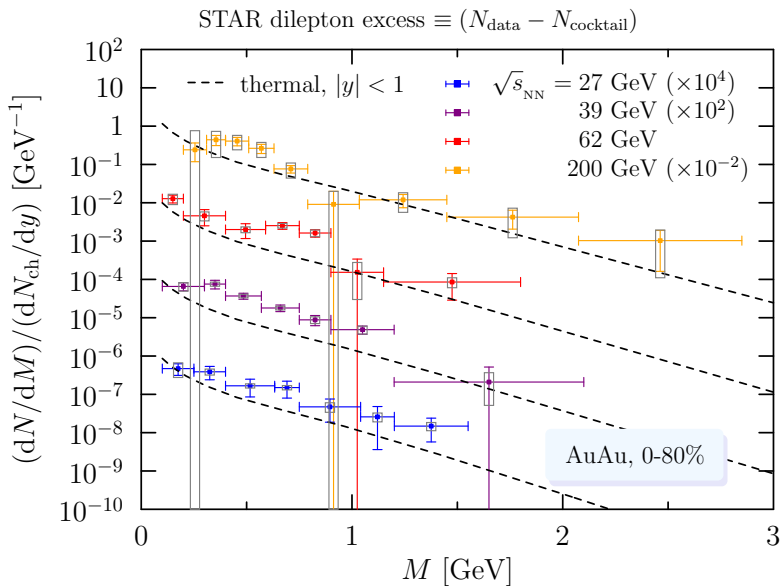
rate from a **static source**:

$$\frac{d\Gamma_{\ell\bar{\ell}}}{dM} = \int_{\mathbf{k}} \frac{M}{\sqrt{M^2 + k^2}} \frac{d\Gamma_{\ell\bar{\ell}}}{d\omega d^3\mathbf{k}}$$



- dileptons are a good thermometer!
- ... but a poor “baryometer”

* in these, and subsequent, plots: $\alpha_s = 0.3$



*see also: [\[Burnier, Gastaldi \(2015\)\]](#) (LHC energies)

for large $M \gg T$ and μ_B :

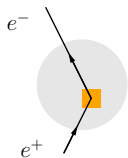
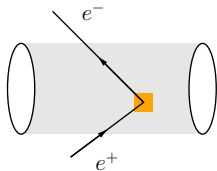
$$\frac{d\Gamma_{e\bar{e}}}{dM} \propto (MT_{\text{eff}})^{3/2} \exp(-M/T_{\text{eff}})$$

\Rightarrow determine T_{eff} from the 'inverse slope' of the spectrum

What physics does this *effective* temperature represent?

in simulations we can access the full history, so the method can be tested!

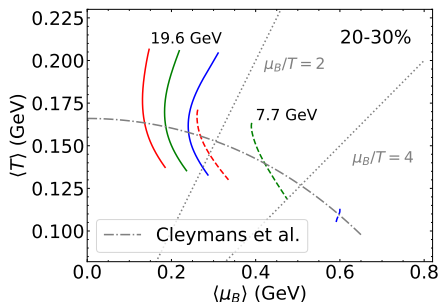
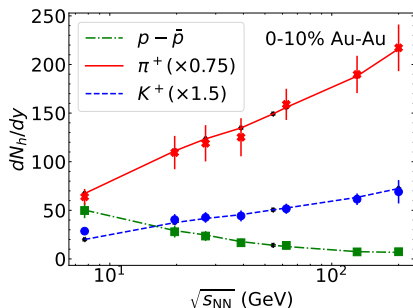
$$\frac{dN_{e\bar{e}}}{d^4K'} = \int dt \int d^3\mathbf{x} \left. \frac{d\Gamma_{e\bar{e}}}{d\omega d^3\mathbf{k}} \right|_{K^\mu = \Lambda^{\mu\nu} K'_\nu}$$



note: $\rho_V(\omega, k)$ evaluated at $\omega = K'_\mu u^\mu$, $k = \sqrt{(K'_\mu u^\mu)^2 - M^2}$

Calibrating the thermometer

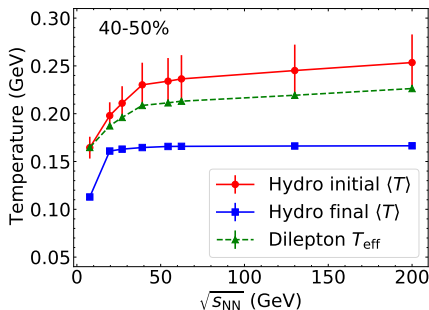
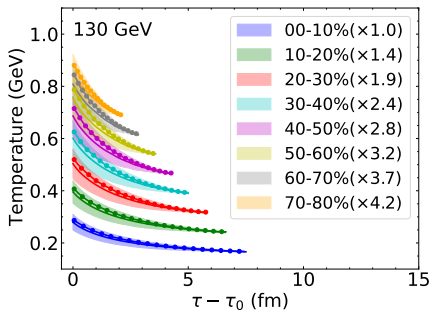
- MC-Glauber initial conditions (at finite μ_B)
- Hydro with MUSIC (including viscous corrections)
- Equation of state: NEOS-B (neglects strangeness and μ_e)
- Hydro stops at $e_{fo} = 0.26 \text{ GeV}/\text{fm}^3$
- Freeze-out (iS3D) and hadronic scatterings w/ UrQMD



code public: <https://github.com/LipeiDu/DileptonEmission>

Calibrating the thermometer

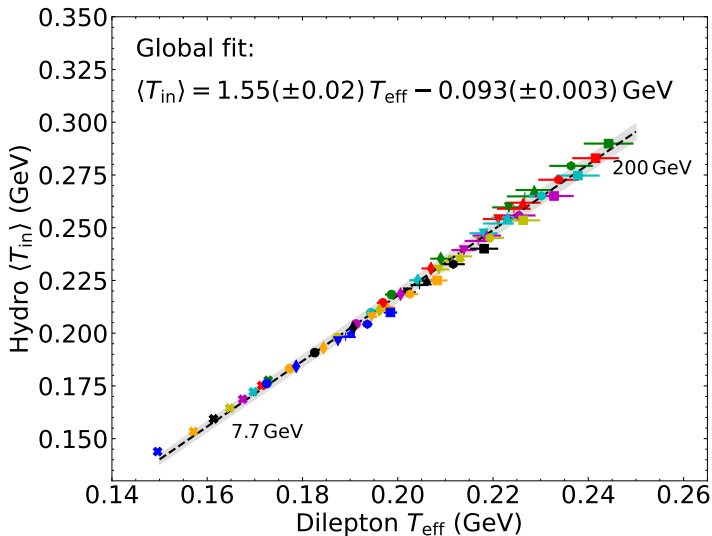
- MC-Glauber initial conditions (at finite μ_B)
- Hydro with MUSIC (including viscous corrections)
- Equation of state: NEOS-B (neglects strangeness and μ_e)
- Hydro stops at $e_{fo} = 0.26 \text{ GeV}/\text{fm}^3$
- Freeze-out (iS3D) and hadronic scatterings w/ UrQMD



code public: <https://github.com/LipeiDu/DileptonEmission>

T_{eff} represents the *initial* temperature!

[Churchill, et al. (2024)]



... predicted over 40 years ago (!!)

[Kajantie, Miettinen (1981)]

Summary

Arxiv: 2211.09575
2311.06675
2311.06951

- thermal dilepton yields at NLO+LPM
⇒ predicted from first principles, at finite T and μ_B
- extracted 'effective' temperature
⇒ linear relationship between T_{eff} and T_{in}

