



**HAL**  
open science

**The French benthic newcomers: new records of  
Ampithoe valida S.I. Smith, 1873 and Polydora colonia  
Moore, 1907 in Brittany, first record of Bispira  
polyomma Giangrande & Faasse, 2012 in the North-East  
Atlantic and northernmost record of Prostheceraeus  
moseleyi Lang, 1884 in Europe**

Gabin Droual, Amelia Curd, Robin Gauff, Benoit Gouillieux, Guillaume  
Gélinaud, Jérôme Cabelguen, Jacques Grall

► **To cite this version:**

Gabin Droual, Amelia Curd, Robin Gauff, Benoit Gouillieux, Guillaume Gélinaud, et al.. The French benthic newcomers: new records of *Ampithoe valida* S.I. Smith, 1873 and *Polydora colonia* Moore, 1907 in Brittany, first record of *Bispira polyomma* Giangrande & Faasse, 2012 in the North-East Atlantic and northernmost record of *Prostheceraeus moseleyi* Lang, 1884 in Europe. *BioInvasions Records*, 2024, 13 (1), pp.37-56. 10.3391/bir.2024.13.1.05 . hal-04606355

**HAL Id: hal-04606355**

**<https://hal.science/hal-04606355>**

Submitted on 18 Jul 2024

**HAL** is a multi-disciplinary open access archive for the deposit and dissemination of scientific research documents, whether they are published or not. The documents may come from teaching and research institutions in France or abroad, or from public or private research centers.

L'archive ouverte pluridisciplinaire **HAL**, est destinée au dépôt et à la diffusion de documents scientifiques de niveau recherche, publiés ou non, émanant des établissements d'enseignement et de recherche français ou étrangers, des laboratoires publics ou privés.



Distributed under a Creative Commons Attribution 4.0 International License

## Research Article

## The French benthic newcomers: new records of *Ampithoe valida* S.I. Smith, 1873 and *Polydora colonia* Moore, 1907 in Brittany, first record of *Bispira polyomma* Giangrande & Faasse, 2012 in the North-East Atlantic and northernmost record of *Prostheceraeus moseleyi* Lang, 1884 in Europe

Gabin Droual<sup>1,2</sup>, Amelia Curd<sup>1</sup>, Robin Gauff<sup>1</sup>, Benoit Gouillieux<sup>3</sup>, Guillaume Gélinaud<sup>4,5</sup>, Jérôme Cabelguen<sup>6</sup> and Jacques Grall<sup>7,8</sup>

<sup>1</sup>Ifremer, DYNECO, 29280 Plouzané, France

<sup>2</sup>DECOD (Ecosystem Dynamics and Sustainability), IFREMER, INRAE, Institut Agro—Agrocampus Ouest, 44980 Nantes, France

<sup>3</sup>Univ. Bordeaux, CNRS, Bordeaux INP, EPOC, UMR 5805, F-33600 Pessac, France

<sup>4</sup>Bretagne Vivante-SEPNB, Réserve Naturelle Nationale des Marais de Séné, route de Brouël, 56860 Séné, France

<sup>5</sup>EA 2119 Géoarchitecture, Territoires Urbanisation Biodiversité Environnement, Université de Bretagne Occidentale, UFR Sciences & Techniques, 6 avenue Le Gorgeu, 29200 Brest, France

<sup>6</sup>Office Français de la Biodiversité (OFB), 1 allée du Général Le Troadec, BP 520, 56019 Vannes, France

<sup>7</sup>Université de Brest, CNRS, IRD, Ifremer, LEMAR, 29280 Plouzané, France

<sup>8</sup>Université de Brest, CNRS, IRD, OSU-IUEM, 29280 Plouzané, France

Corresponding author: Gabin Droual ([gabin.droual@ifremer.fr](mailto:gabin.droual@ifremer.fr))

**Citation:** Droual G, Curd A, Gauff R, Gouillieux B, Gélinaud G, Cabelguen J, Grall J (2024) The French benthic newcomers: new records of *Ampithoe valida* S.I. Smith, 1873 and *Polydora colonia* Moore, 1907 in Brittany, first record of *Bispira polyomma* Giangrande & Faasse, 2012 in the North-East Atlantic and northernmost record of *Prostheceraeus moseleyi* Lang, 1884 in Europe. *BioInvasions Records* 13(1): 37–56, <https://doi.org/10.3391/bir.2024.13.1.05>

**Received:** 25 August 2022

**Accepted:** 14 September 2023

**Published:** 3 December 2023

**Handling editor:** Agnese Marchini

**Thematic editor:** April Blakeslee

**Copyright:** © Droual et al.

This is an open access article distributed under terms of the Creative Commons Attribution License ([Attribution 4.0 International - CC BY 4.0](https://creativecommons.org/licenses/by/4.0/)).

OPEN ACCESS

### Abstract

As introduced species constitute a major threat to biodiversity, it is crucial to properly monitor their spread to new regions. The present study reports new records of four species: 1) the amphipod *Ampithoe valida* S.I. Smith, 1873 and 2) the polychaete *Polydora colonia* Moore, 1907, both new records for Brittany (North-West part of France); 3) the polychaete *Bispira polyomma* Giangrande & Faasse, 2012, a first finding in the North-East Atlantic; and 4) the flatworm *Prostheceraeus moseleyi* Lang, 1884 with a confirmed northernmost record in North-East Atlantic. These species were recorded within two semi-enclosed bays: the Morbihan Gulf on the southern coast of Brittany and the Bay of Brest in the North-West part of Brittany. Both localities are already known to host numerous non-indigenous species as well as benthic macrofaunal distributional range limits. Morphological variations and inconsistencies are discussed and reported for *A. valida*, revealing missing characters and errors in the literature. This work adds three non-indigenous species to Brittany and two non-indigenous species to French waters, for which we discuss potential introduction vectors.

**Key words:** Amphipoda, Polychaeta, Platyhelminthes, introduction, non-indigenous, non-native, distribution

### Introduction

Non-indigenous species (NIS; *i.e.* species introduced successfully to new areas through human activities; Blackburn et al. 2011) are considered as one of the major threats to biodiversity (Molnar et al. 2008; Brondízio et al. 2019), leading in some cases to extinction of the threatened species (Blackburn et al. 2019). While the number of introduced species is probably underestimated

(Bailey et al. 2020), their actual impacts on native environments is still largely unknown due to 1) few studies reporting low NIS impact, 2) the difficulties encountered in detecting and studying small and low abundance species and 3) dedicated funds being focused on suspected impacts targeting the most aggressive invasive NIS (Anton et al. 2019). Nevertheless, impacts on native communities are in some cases unequivocal, such as alterations in ecosystem services, native species extinctions or changes in to their native species behaviour (Vilà et al. 2010; Catford et al. 2018; Anton et al. 2019). The majority of NIS in the marine realm are introduced through shipping (Hewitt et al. 2009; Tsiamis et al. 2018), which is expected to further increase in the near future (Sardain et al. 2019). Modelling studies focused on introduction and dispersion of NIS provide important tools to predict the spread and impacts of these species (Faulkner et al. 2020; Laeseke et al. 2020). To do so, a thorough baseline of records, species traits and environmental conditions of introduced areas are needed not only as input for these models, but ultimately for defining new management procedure to tackle NIS introductions or spread (e.g. Weerasena et al. 2022). All these steps rely on an international network of taxonomic skills able to detect newly-introduced NIS (Cottier-Cook et al. 2017; Hutchings and Lavesque 2020). Therefore, a worldwide up-to-date and accurate NIS records database represents a crucial tool.

Simultaneously, several species that are expanding their ranges in response to anthropogenic environmental changes, defined as neonative (Essl et al. 2019), are shifting poleward following climate induced changes in temperature (Poloczanska et al. 2013; Burrows et al. 2014; Lenoir et al. 2020). Consequently, range expansions or local extinctions are underway and are affecting local community structure and functioning (Sorte et al. 2010; Pinsky et al. 2020). While their effects may be considered as transient, rather than permanent (Urban 2020), their impacts may be comparable to those of NIS (Sorte et al. 2010; Wallingford et al. 2020). It is therefore important to also monitor species range shifts, to fill the knowledge gap concerning those species (Occhipinti-Ambrogi 2007).

Here, we report four new NIS records along the French Atlantic coast: 1) the amphipod *Ampithoe valida* S.I. Smith, 1873 and 2) the polychaete *Polydora colonia* Moore, 1907 that continue to spread across the French coasts; 3) the polychaete *Bispira polyomma* Giangrande & Faasse, 2012, recorded for the first time in the North-East Atlantic and 4) the flatworm *Prostheceraeus moseleyi* Lang, 1884 with a major distributional range shift poleward. For the latter, we also discuss briefly the naturalist knowledge available on non-scientific sources. For all four records, we discuss whether the species occurrences are likely due to human-mediated introduction or whether they can be attributed to natural dispersion.

## Materials and methods

### *Sampling and analysis*

This study compiles several new records and sightings around Brittany (Western France, Europe) – a biogeographical transition area between cold- and warm-temperate European ecoregions (Figure 1) (Dinter 2001).

*Ampithoe valida* was discovered as part of a research project monitoring the macrofauna in the Séné natural reserve (curator Guillaume Gélinaud). Started in 2003, the aims are to monitor benthic macrofauna in order to quantify the food availability for birds and to monitor the ecological status of the estuary. The monitoring is not undertaken annually. Samples were retrieved using an intertidal hand-corer (0.00817 m<sup>2</sup>).

*Polydora colonia* were discovered as part of the two year research project IMPECAPE (2015–2017) dedicated to the assessment of ecological impacts of clam dredging on maerl beds. Samples were retrieved seasonally between January 2016 and May 2017 using a Smith-McIntyre grab (0.1 m<sup>2</sup>).

Samples for these first two species were sieved on a 1 mm mesh before fixation with 4% formaldehyde in advance of being sorted and preserved in 70% ethanol.

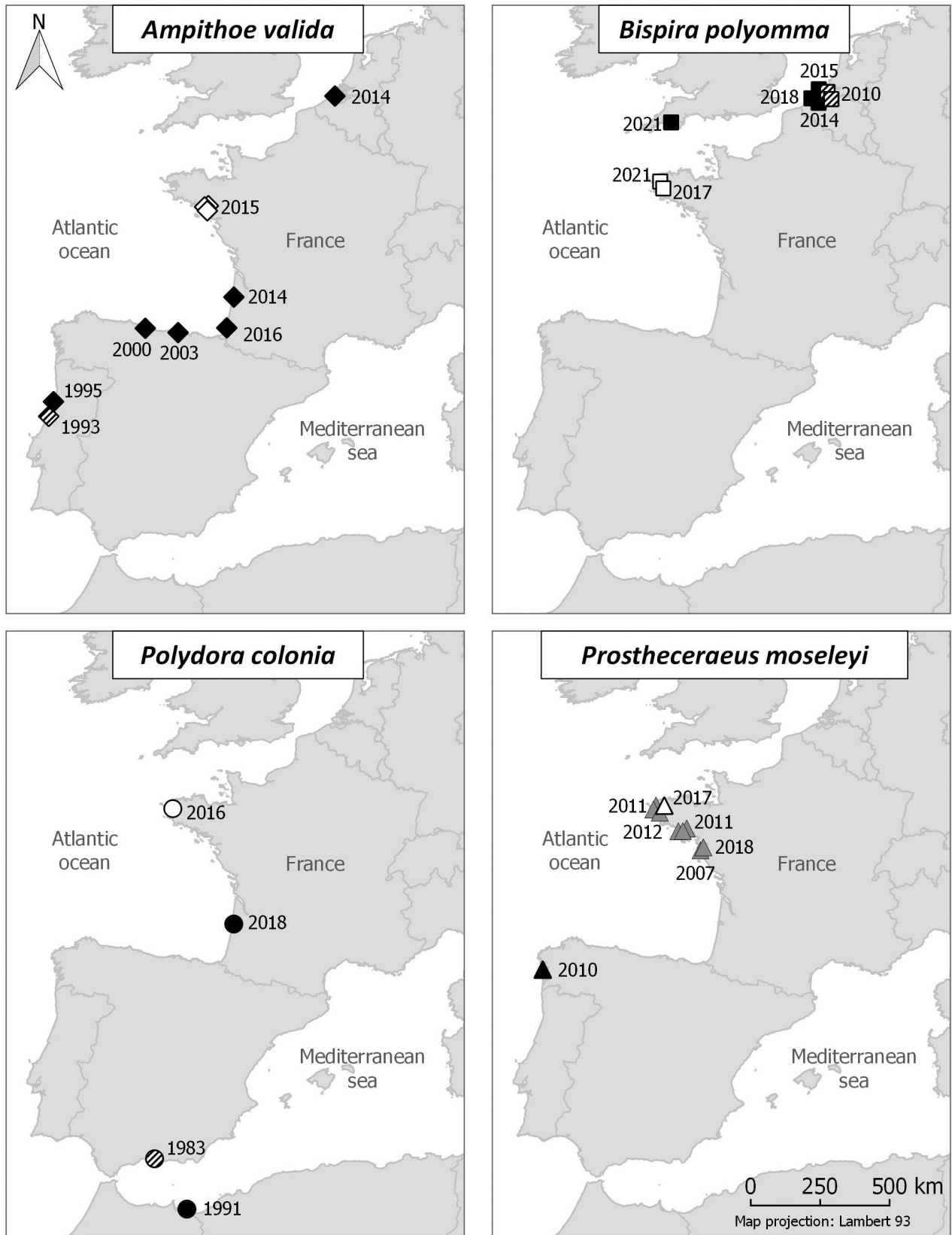
*Bispira polyomma* were first detected during a non-affiliated project field inventory and later on an artificial seawall during the monitoring of eco-engineered structures, through a Rapid Assessment Survey, as part of the CoEcoDigue project (<https://dyneco.ifremer.fr/Nos-equipes/LEBCO/Recherche/Projets/COECODIGUE>), started in 2020. Specimens were removed from the substratum with a scalpel and preserved in 70% ethanol.

*Prostheceraeus moseleyi* was also retrieved from the substratum during a personal field inventory and preserved in 70% ethanol.

The specimens were examined under a Zeiss Stemi 2000-C stereomicroscope and an Olympus BX-40 microscope. Photographs were taken either with a Canon Eos 600D or with the software Zen core V2.7 connected to either 1) a Zeiss Axioscope 5 equipped with an Axiocam 208 color or 2) a Zeiss Discovery.V20 equipped with an Axiocam 305 color. Scanning electron microscopy (SEM) images were produced with dehydrated specimens in ascending ethanol, dried to critical-point, coated with gold and photographed using the Quanta200 FEI (Ifremer).

The materials examined in this work were deposited in the Muséum National d'Histoire Naturelle de Paris (MNHN) reference collection. Accession numbers are given in each species sub-section.

For each species, a “short diagnosis” lists the main morphological diagnostics criteria. It should be noted that the diagnosis is insufficient for species identification; the authors highly recommend comparing specimens to the descriptions found in the literature used and cited in each species sub-section to avoid any confusions with morphologically close species.



**Figure 1.** Map of Western Europe where all the newly recorded species have been observed and/or collected. Each symbol represent a species: (◇) *Ampithoe valida* Smith, 1873, (○) *Polydora colonia* Moore, 1907, (□) *Bispira polyomma* Giangrande & Faasse, 2012, (Δ) *Prostheceraeus moseleyi* Lang, 1884. Black symbols display records from literature; grey symbols records from internet data; white symbols records from this study; black streaked symbols refer to the first mention in Europe.

### *Occurrence of Prostheceraeus moseleyi*

To further complete the scientific literature and our field data, we compiled all records of *Prostheceraeus moseleyi* along the Atlantic coast of France reported through several media used by amateur biologists, such as websites (Doris; mer-littoral.org; Flickr; 500px), social networks (ResearchGate; Facebook) and the Bretagne vivante-SEPNB database. The search consisted of the following queries: *Prostheceraeus moseleyi*; *Prostheceraeus* AND *moseleyi* AND Atlanti\*; depending on the media used (results in Supplementary material Table S3).

### *Measurements*

All measures were made with an Axiocam MRc 5 mounted on a Zeiss stereo Lumar.V12. For the amphipod species, the length was measured from the rostrum to the distal end of the telson. For the two polychaetes, length was measured from the prostomium to the pygidium or, if damaged, to the last segment.

## **Results**

### *Observations*

Phylum Arthropoda von Siebold, 1848

Order Amphipoda Latreille, 1816

Family Ampithoidae Boeck, 1871

Genus *Ampithoe* Leach, 1814

### ***Ampithoe valida* Smith, 1873**

Fourteen specimens were collected in 2015 and 2016, as part of a benthic monitoring project, directed by the Réserve Naturelle des Marais de Séné, France (curator Guillaume Gélinaud) in the Morbihan Gulf. Male specimens were firstly identified to the family and genus level (Chevreux and Fage 1925; Lincoln 1979; Bellan-Santini et al. 1982). Species level were attained through comparison of several works carried out in Europe reporting NIS (Faasse 2015; Gouillieux 2017), and through the use of guides and scientific publications dealing with amphipod fauna from other continents (Mills 1964; Bousfield 1973; Lecroy 2002; Shin et al. 2005; Kim 2011).

**Materials examined:** 2 males: MNHN-IU-2022-387, 11.3 mm, 47°36'5.526"N; 2°41'49.721"W, 21/12/2016; MNHN-IU-2022-388, 13 mm, 47°36'5.526"N; 2°41'49.721"W, 22/10/2016; 12 females: MNHN-IU-2022-389, ovigerous female, 10.8 mm, 47°35'31.499"N; 2°41'44.415"W, 09/10/2015; MNHN-IU-2022-390, 13.8 mm, 47°35'31.499"N; 2°41'44.415"W, 09/10/2015; MNHN-IU-2022-391, 9 mm, 47°35'31.499"N; 2°41'44.415"W, 09/10/2015; MNHN-IU-2022-392, ovigerous female, 9 mm, 47°35'31.499"N; 2°41'44.415"W, 09/10/2015; MNHN-IU-2022-393, female with juveniles emerging from the brood, 13.1 mm, 47°35'31.499"N; 2°41'44.415"W, 09/10/2015; MNHN-

IU-2022-394, 5.6 mm, 47°36'5.526"N; 2°41'49.721"W, 22/10/2016; MNHN-IU-2022-395, ovigerous female, 7.1 mm, 47°36'5.526"N; 2°41'49.721"W, 21/10/2016; MNHN-IU-2022-396, 11.8 mm, 47°35'31.499"N; 2°41'44.415"W, 09/10/2015; MNHN-IU-2022-397, 6.7 mm, 47°35'31.499"N; 2°41'44.415"W, 09/10/2015; MNHN-IU-2022-398, 7.8 mm, 47°35'31.499"N; 2°41'44.415"W, 09/10/2015; MNHN-IU-2022-399, 11.7 mm, 47°36'5.526"N; 2°41'49.721"W, 21/10/2016; MNHN-IU-2022-400, 6.7 mm, 47°36'5.526"N; 2°41'49.721"W, 21/10/2016.

**Additional materials examined:** MNHN-IU-2014-12860, dissected specimen (17 slides), 7.8 mm, 44°40'30.651"N; 1°05'55.540"W, 22/10/2014; MNHN-IU-2014-12861, 11.6 mm, 44°39.639"N; 1°9.099"W, 27/04/2016.

**Short diagnosis:** Males share: 1) first gnathopod with large carpal lobe (Figure 2A); 2) second gnathopod with subquadrate middle tooth on palmar margin (Figure 2C); 3) coxa 1 to 4 with long setae on postero-distal margin (Figure 2B).

**Morphological variations:** Several morphological variations were observed on males from this study compared to recent descriptions (Mills 1964; Barnard 1965; Bousfield 1973; Conlan and Bousfield 1982; Lecroy 2002; Gouillieux 2017). Uropods and coxae 1–4 display the main variations (Table S1, excluding the study based on female descriptions (Shin et al. 2005; Kim 2011)).

Left propodus on pereopods 5–7 on male MNHN-IU-2022-388 reach 7 clusters of 1 spine and setae, instead of 5 as reported by Gouillieux (2017) at Arcachon. Alike Gouillieux's (2017) specimens, *A. valida* males studied here have propodus on pereopods 5–7 distally enlarged and not straight, as mentioned by Faasse (2015).

Gouillieux's (2017) specimens display some morphological variations compared to other descriptions (Table S1). After careful examination of the materials deposited at the MNHN by Gouillieux (2017), we noticed several characters that do not fit his recent description (Table S2 and Figure S1 B–F).

**Ecology:** All stations sampled in this area were muddy sediments with brackish water conditions (Perez-Belmonte 2008).

*Grandidierella japonica* Stephensen, 1938 also a recently discovered NIS (Droual et al. 2017), co-occurred with *Ampithoe valida*, in all but two stations. Furthermore, in at least one station *A. valida* co-occurred with two other introduced species, *Tritia neritea* (Linnaeus, 1758) and *Ruditapes philippinarum* (A. Adams & Reeve, 1850).

Phylum Annelida Lamarck, 1802

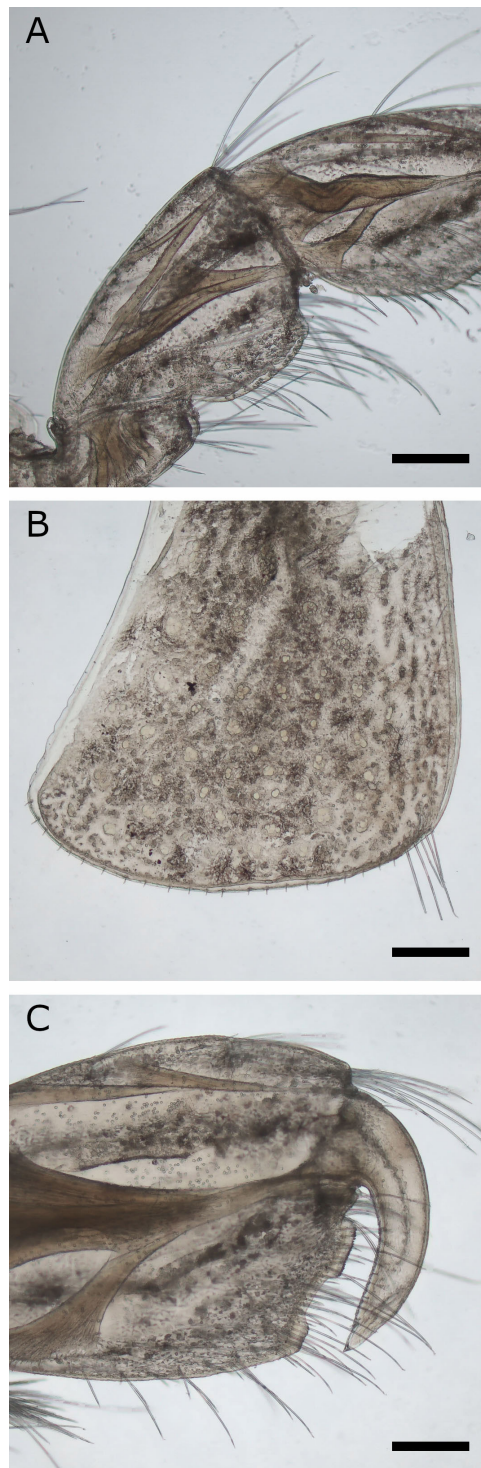
Order Spionida sensu Rouse & Fauchald, 1997

Family Spionidae Grube, 1850

Genus *Polydora* Bosc, 1802

### ***Polydora colonia* Moore, 1907**

Nine specimens were sampled in the Bay of Brest on maerl beds as part of the IMPECAPE project (directed by Dr. Jacques Grall) in 2016. Identification



**Figure 2.** *Amphithoe valida* Smith, 1873, male from Morbihan Gulf, Brittany, France, MNHN-IU-2022-388, 13 mm, 22/10/2016. (A) Male first gnathopod, left side, inside view. (B) Long setae on postero-distal margin on left coxa 1. (C) Subquadrate middle tooth on propodus of second gnathopod, right side. Scale bars: 200  $\mu$ m.

to the species level was achieved with several descriptions and records (Blake 1971; Aguirre et al. 1986; Gil 2011; David and Williams 2012).

**Materials examined:** MNHN-IA-PNT-139, 7.81 mm, 48°18'58.71"N; 4°23'27.99"W, 10/2016; VC1, 5.88 and 3.68 mm, 48°18'58.71"N; 4°23'27.99"W, 10/2016 and 01/2016; MD3, 2.97, 4.59, 5.17 and 7.23 mm, 48°19'10"N;



4°23'06.1"W, 01/2016; ZG4, 6.06 mm, 48°17'10.20"N; 4°21'19.90"W, 06/2016; ZC2, 3.64 mm, 48°18'55.35"N; 4°21'53.77"W.

**Additional materials examined:** 10 specimens, 44°34'N; 1°14'16.74"W, 13/04/2011, sampled by scuba-diving by Benoit Gouillieux.

**Diagnosis:** 1) collar on major spines of chaetiger 5 (Figure 3A); 2) major spines of chaetiger 5 bifid, with two unequal teeth (Figure 3A); 3) boat hooks on last few chaetigers before pygidium (Figure 3B).

**Morphological variations:** Compared to the re-description made by David and Williams (2012) the length of chaetiger 5 is smaller than twice the length of chaetigers 4 and 6; boat hooks appear between 7–10 last chaetigers with sometimes the last and/or penultimate chaetiger(s) without boat hooks, instead of starting from 2–7 last chaetigers; two boat hooks only observed on one specimen instead of generally two; boat hooks accompanied by 2–5 setae instead of two capillary setae; 4–7 hooded hooks per neuropodia size-dependent instead of 3–5 hooded hooks per neuropodia, and two pairs of eyes on a 47 chaetigers specimen.

**Ecology:** All specimens were sampled on maerl beds in the Bay of Brest in shallow waters with depth inferior to 10 m.

Order Sabellida Levinsen, 1883

Family Sabellidae Latreille, 1825

Genus *Bispira* Kröyer, 1856

### ***Bispira polyomma* Giangrande & Faasse, 2012**

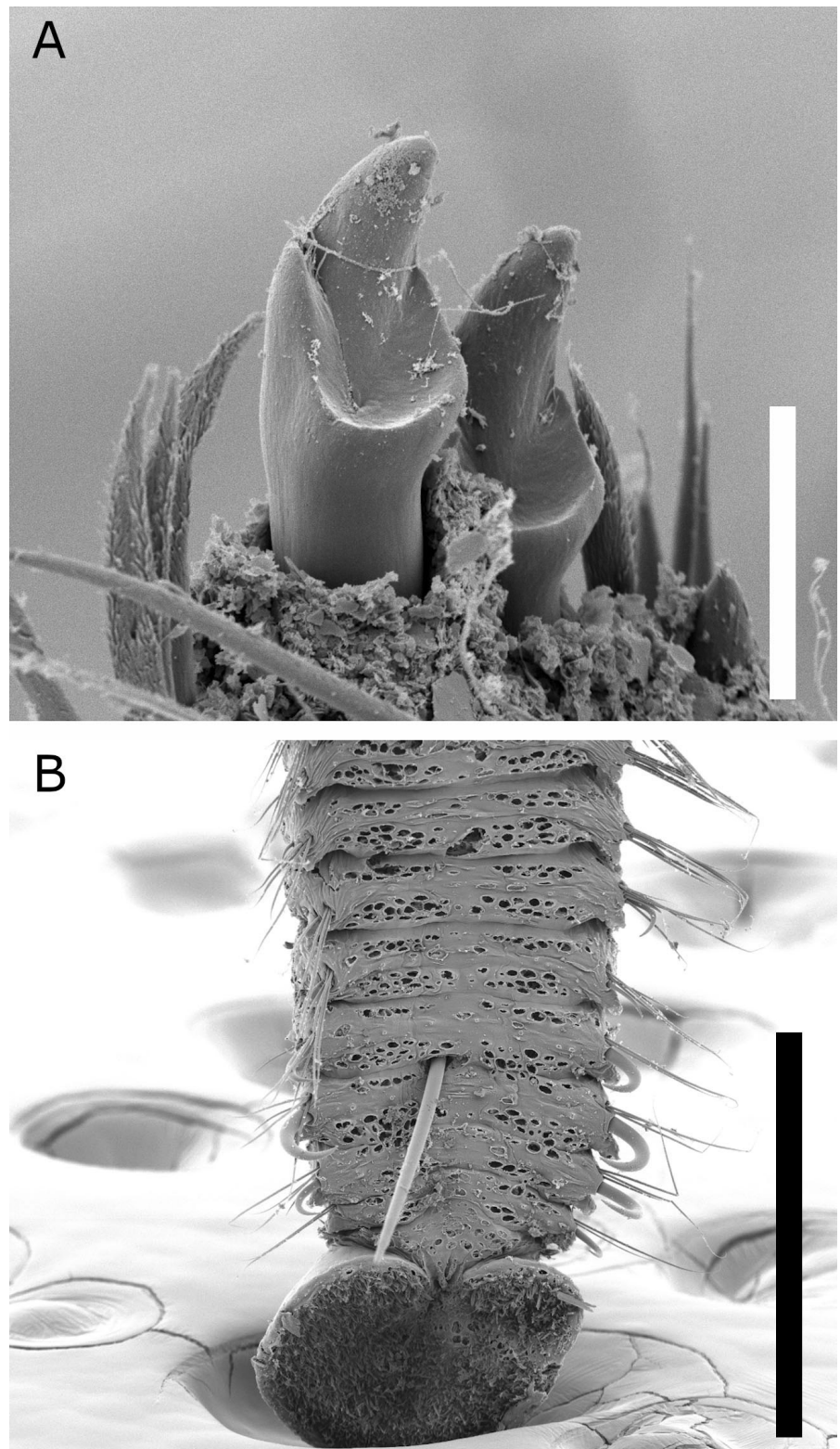
During an intertidal assessment of biodiversity, in 2017, one specimen attached to a dead oyster fixed to an oyster culture table frame was sampled in the Bay of Brest, in Penfoul cove at Plougastel-Daoulas. Later, in September 2021, a high density of *Bispira polyomma* was discovered during a survey monitoring artificial seawall biodiversity. To identify the specimens, Giangrande et al. (2015) and Faasse and Giangrande (2012) were used.

**Materials examined:** MNHN-IA-PNT-140, 11.5 mm, 48°20'48.20"N; 4°20'27.96"W, 16/11/2017; MHNH-IA-PNT-141, 2 broken specimens (8 and 20 chaetigers), 48°22'47.82"N; 4°26'31.33"W, 02/02/2022.

**Diagnosis:** 1) Thoracic tori reaching ventral shields (Figure 4C); 2) blackish pigment on thoracic tori (Figure 4C); 3) numerous eyes on the radioles (Figure 4B); 4) wide dorsal gap in the collar (Figure 4A); 5) few radioles (maximum = 20) (Figure 5A); 6) 6–8 coloured bands on radioles (Figure 5).

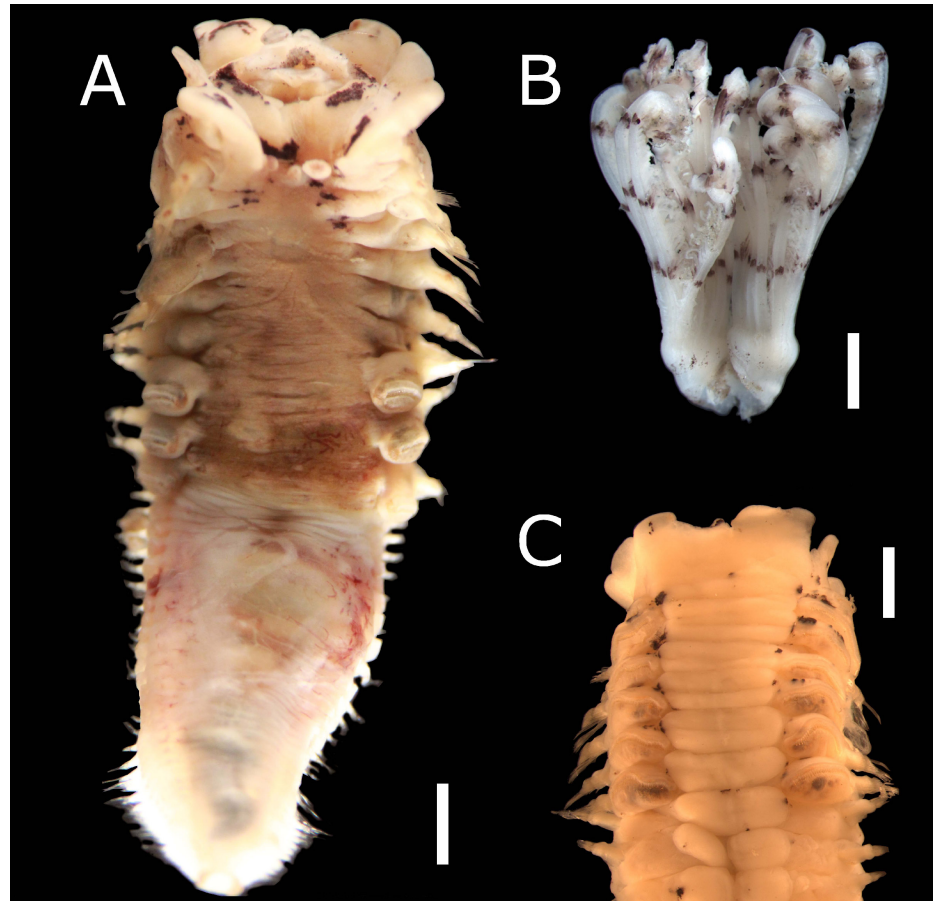
**Remarks:** The specimens observed fit completely to the original description (Faasse and Giangrande 2012). Specimen MNHN-IA-PNT-140, two body regions due to a posterior regeneration.

**Ecology:** One specimen identified in this study comes from an intertidal area in an oyster farm where *Steromphala albida* (Gmelin, 1791), another potentially abundant NIS (8 to 10/m<sup>2</sup>, Gabin Droual and Vincent Le Garrec *pers. obs.*) is present. The second location where *Bispira polyomma*



**Figure 3.** *Polydora colonia* Moore, 1907 from Brest, MD3 01/2016. (A) Major spines of chaetiger 5, scale bar: 20  $\mu$ m. (B) Boat hooks and pygidium with a sponge spicule embedded through the posterior part, scale bar: 300  $\mu$ m.

was found is an artificial seawall in which large concrete tidepools have been incorporated. Specimens from this locality were easily observed due to the bright blue colour of their branchial crown (Figure 5A, B) and their high abundance (Figure 5B). As noted by Faasse and Giangrande (2012), this



**Figure 4.** *Bispira polyomma* Giangrande & Faasse, 2012, MNHN-IA-PNT-140, collected in the Bay of Brest the 16/11/2017. (A) Dorsal view. (B) Crown. (C) Collar margin. Scale bars: 1 mm.

species occurs just below the water line of tidepools. At the bottom (approximately 110 cm depth) of these concrete tidepools temperature is ranging from 8 to 23 °C annually.

Phylum Platyhelminthes Minot, 1876

Order Polycladida Lang, 1884

Family Euryleptidae Stimpson, 1857

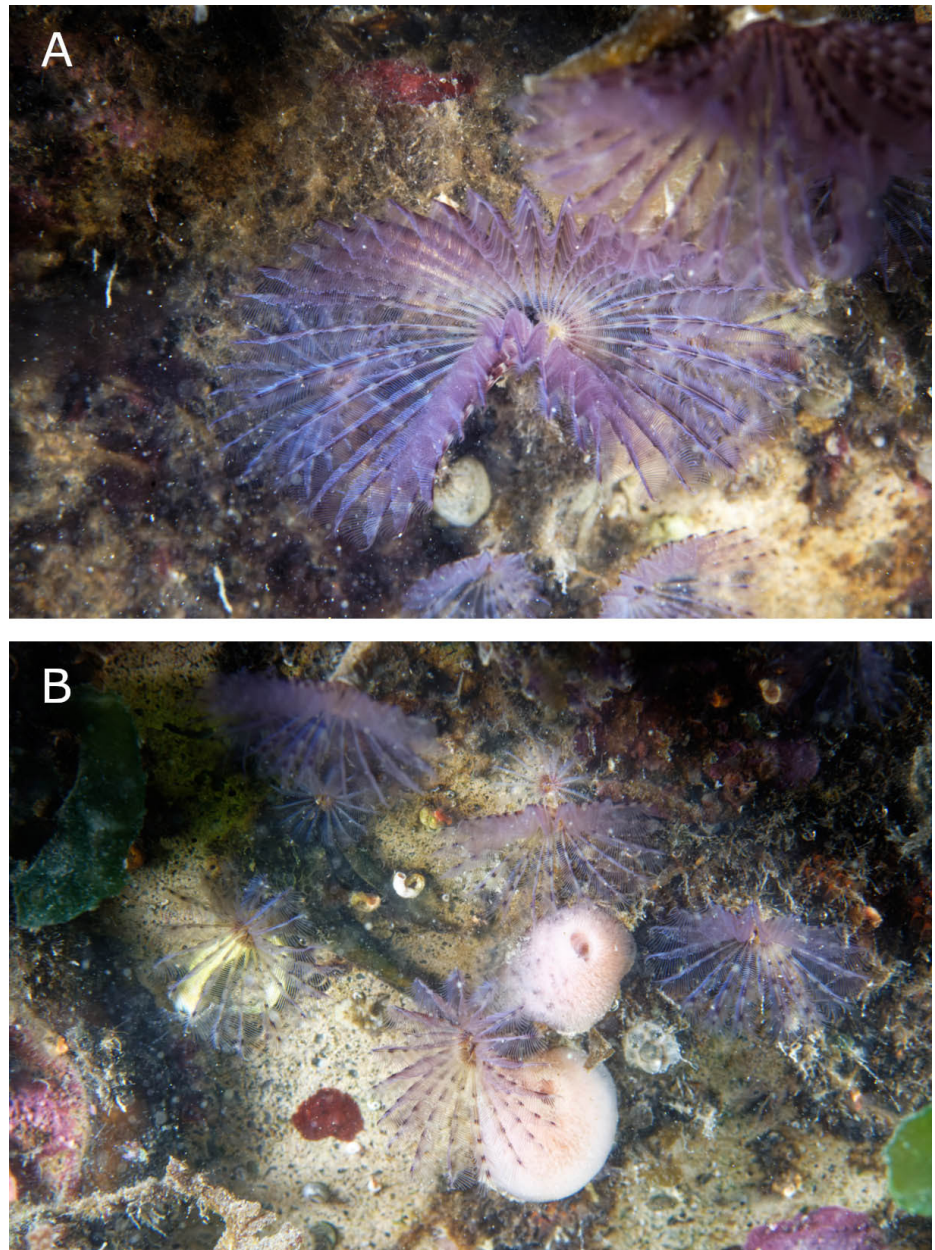
Genus *Prostheceraeus* Schmarda, 1859

***Prostheceraeus moseleyi* Lang, 1884**

One unknown Polycladida was collected on the mid-shore oyster reef (*Magallana gigas* (Thunberg, 1793)) in Penfoul cove, Plougastel-Daoulas, inside the Bay of Brest in November 2017 (Figure 6A). The species was identified thanks to Noreña et al. (2014) study.

**Materials examined:** MNHN-IA-PNT-142, about 7 mm long and 4 mm wide (alive), 48°20'53.66"N; 4°20'18.01"W, 06/11/2017.

**Diagnosis (external morphology):** 1) dark round or oval spots on dorsal margin (Figure 6A–F); 2) yellow band coloration along body margin (Figure 6A–F); 3) marginal tentacles dark erected (Figure 6A); 4) rounded



**Figure 5.** *Bispira polyomma* Giangrande & Faasse, 2012, live specimens from the Renewable Marine Energy polder seawall (ecoblock H32), photographed on 03/03/2022. (A) Close-up of one specimen. (B) Specimens from an “ecoblock” pool showing individual density (photographed by Olivier Dugornay).

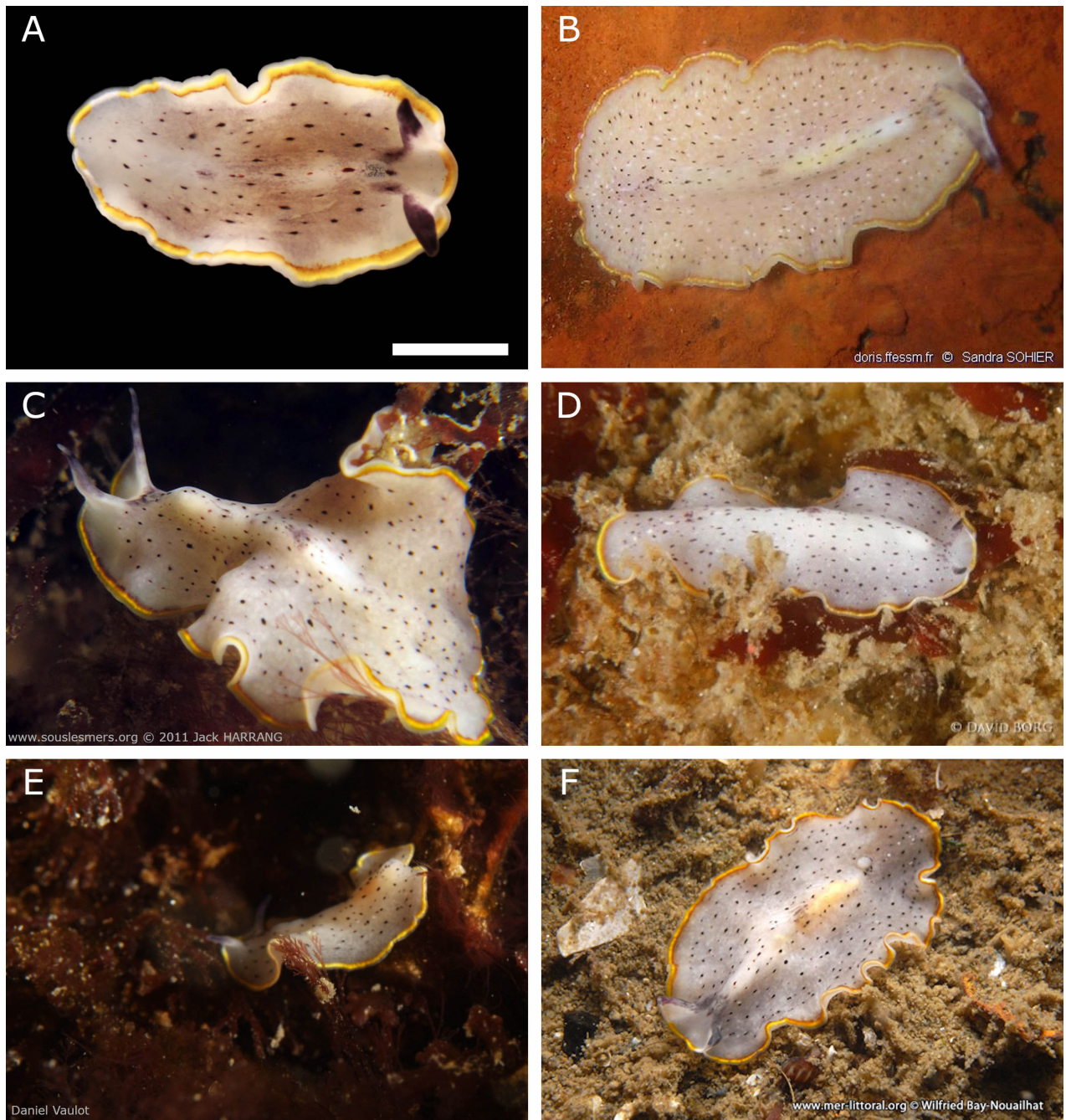
anterior and posterior ends (Figure 6A–F); 5) undulating margins (Figure 6A–F); 6) ventral surface white.

**Ecology:** *Prostheceraeus moseleyi* occurs from the intertidal to 20 m depth in France (see Table S3 for all French records).

## Discussion

### *Ampithoe valida*

Comparisons of male descriptions available in the literature point out several morphological variations worldwide (Table S1). *Ampithoe valida* as a cryptic species (low phenotypic disparity relatively to their genetic differentiation and



**Figure 6.** *Prostheceraeus moseleyi* Lang, 1884. (A) Sampled from Penfoul cove in the Bay of Brest on the 6<sup>th</sup> of November 2017, MNHN-IA-PNT-142. (B) First Atlantic French record from Noirmoutier, June 2007 (photograph by Sandra Sohier). (C) First record in Brittany (Plouhinec, Morbihan) the 23<sup>rd</sup> of August 2011 (photograph by Jack Harrang). (D) Ria d’Etel record, the 31<sup>st</sup> of May 2015 (photograph by David Borg). (E) First northernmost occurrence from the Bay of Brest the 3<sup>rd</sup> of April 2011 (photograph by Daniel Vaultot). (F) Second northernmost occurrence near Brest, the 4<sup>th</sup> of April 2011 (photograph by Wilfried Bay-Nouailhat). All data associated are available in the Table S3.

divergence times (Struck et al. 2018)) is composed of three distinct lineages in the Western Atlantic and in the Pacific (Pilgrim and Darling 2010; Sotka et al. 2017; Harper et al. 2022). We suspect that morphological dissimilarities highlighted here might reflect this complex diversity. Harper et al. (2022) did not have any genetic data from Europe but one or several lineages might occur in the European waters. This hypothesis will require further samplings, focus on the European *A. valida* lineages coupled with a morphological

study. The different degrees of accuracy of the descriptions in the literature may partially explain the observed morphological variability. For instance, we observe an accessory flagellum (Figure S1A, B) on the peduncle of the first antenna which was only previously noted by Lecroy (2002) while it was overlooked by Gouillieux (2017) (Table S2). After examination of specimens used by Gouillieux's (2017) to re-describe the species, we discovered some inconsistencies on uropods microscopic characters that we updated (Figure S1 C–F; Table S2).

This species is continuing its expansion in Europe and we expect to find it in many other areas, especially where anthropogenic activities occur, particularly shellfish farming and shipping (Faasse 2015; Gouillieux 2017). Shellfish farming is an important economic activity in the Morbihan Gulf, with 4000 t of oysters produced each year (Allenou et al. 2002). This activity as mentioned by Le Roux (2018) is suspected to be one of the major entryways of NIS introduction in the Morbihan Gulf. With no international harbour within the Gulf, *Ampithoe valida* might have also been introduced by sailing boats, an activity acting as a secondary vector spreading NIS more locally (Afonso et al. 2020; Ashton et al. 2022). Since even a small number of ovigerous females may found a new population (Harper et al. 2022), the occurrence of ovigerous females and juveniles in the brood chamber of one female suggests that the species can have established a population in the south of Brittany. Further studies or the natural reserve benthic monitoring will allow to evaluate the long-term establishment of this species and its potential impacts on local benthic communities.

### *Polydora colonia*

This cryptogenic species has a large distribution across the Atlantic Ocean (Ruellet 2004; David and Williams 2012). In Europe, the species was reported for the first time in Spain (Aguirre et al. 1986), then in Italy (Tena et al. 2000) and more recently in France (Gouillieux and Droual 2020; Gouillieux et al. 2022). *Polydora colonia* seems largely to occur in sponges, especially in *Clathria* (*Clathria*) *prolifera* (Ellis and Solander 1786), *Halichondria* (*Halichondria*) *bowerbanki* Burton, 1930 but also in tunicates (Moore 1907), algae such as *Padina pavonica* (L.) Thivy or calcareous algae such as *Mesophyllum lichenoides* (J.Ellis) Me.Lemoine (Aguirre et al. 1986; Tena et al. 1991; David and Williams 2012). In France, *P. colonia* has been reported in another sponge (also an introduced species), *Celtodoryx ciocalyptoides* (Burton 1935) (Gouillieux et al. 2022). In our study, the species was found on maerl beds in which *Halichondria* (*Halichondria*) *panicea* (Pallas, 1766), *H. bowerbanki* and *Halichondria* sp. are co-occurring in the Bay of Brest (López-Acosta et al. 2022). Since sorting was not carried out in the same laboratory where the identifications were made, we cannot state on which substratum (maerl or *Halichondria* spp.) the specimens were sampled. However, two specimens

were observed with a spicule passing through their body (Figure 3B) which might indicate that these individuals were retrieved from sponge tissues.

Gouillieux et al. (2022) highly suspected that oyster farming in Arcachon Bay and Hossegor Lake represents the main vector of introduction of this species. In the Bay of Brest oyster farming, maritime traffic from and to the Brest international harbour, and recreational boating all constitute potential introduction pathways for *P. colonia* (David and Williams 2012). Moreover, as discussed above, maerl beds are suitable habitats for *P. colonia*. Maerl beds represent 30% of the seabed in the Bay of Brest (representing 40 km<sup>2</sup>) and are adjacent to several anthropogenic activities cited above (Ehrhold et al. 2021). Thus, the Bay of Brest could be home to a large population of *P. colonia* and might constitute a source of dissemination through all the human activities occurring in the Bay. This species may have been present in Brittany for several years where due to its ecology (boring species) and its tendency to break easily it may have remained unnoticed until now.

### *Bispira polyomma*

The present study provides the third published record of this species in Europe and the first in the Atlantic ocean as previous observations were made in the North Sea and English Channel (Faasse and Giangrande 2012; Gittenberger et al. 2015; ICES 2022). Because of its unknown native area, this species is also considered as cryptogenic. It has been originally described from specimens found in an outlet of an oyster storage basin and then in the marina of Yerseke (Faasse and Giangrande 2012). The specimens, in our work, were also firstly discovered on a table frame of an oyster farm. Later it has been found in large concrete artificial tidepools embedded in a seawall, located between the Brest international commercial harbour and the Moulin Blanc Marina. The fact that this species was firstly recorded in oyster farms, twice in two different countries, points to shellfish cultures as being the main pathway for introduction over long distances. The species subsequently occurs in harbours, suggesting that recreational boating could represent the secondary vector for its local spread (Gittenberger et al. 2015). This species has not yet been discovered in other areas of France, notably where oyster farming is well developed (e.g. Bay of Arcachon, Nicolas Lavesque *pers. comm.* and Morbihan gulf, Gabin Droual *pers. obs.*). Although it may have gone unnoticed until now, this record might also be indicative of a recent introduction event in the bay of Brest. Indeed, *B. polyomma* has not been observed in recent studies undertaken in the Brest marinas (Kenworthy et al. 2018; Gauff et al. 2022; Rondeau et al. 2022).

### *Prostheceraeus moseleyi*

Originally restricted to the Mediterranean Sea, *Prostheceraeus moseleyi* is first mentioned in the Atlantic by Noreña et al (2014), in Ria de Arosa, Galicia, Spain. Since no other records were reported at north of the Spanish

one through the scientific literature, our study represents the northernmost record for this species. Thus, the Bay of Brest represents a poleward range extension of 750 km.

Amateur naturalists, and citizen science in general, has proven to be an effective way to collect NIS record (e.g. Lehtiniemi et al. 2020; Langeneck et al. 2022). Data generated, once validated by academic naturalists, ecologists or taxonomists, might be as good as scientific data following the ease of the protocol (Earp et al. 2022). Therefore, we looked for data on *P. moseleyi* on the internet and in Bretagne vivante-SEPNB database. Since *P. moseleyi* is a colorful species (Figure 6A–F), we expected naturalists to report their observations. Several occurrences were available and we validated all data with photographs (Figure 6B–F, Table S3). We concluded that the Bay of Brest is indeed the northernmost limit for this species since 2011 (Table S3). However, we observe that *P. moseleyi* has been present along the Atlantic coast of France since at least 2007 (Table S3, Figure 6B), three years before the Portugal discovery in 2010 (Noreña et al. 2014). We highlight here the ability and importance of citizens science in producing valuable biogeographic data (Marquina et al. 2015; OBCE 2021).

### Acknowledgements

The authors wish to thank the Réserve des marais de Séné; Vincent Le Garrec and Antoine Carlier for their help during fieldworks; Lyvia Lescure for IMPECAPE samples sorting; Nicolas Gayet from the Ifremer's SEM analytic platform; Céline Cordier for her contribution to the map generation; the ICES Working Group on Introductions and Transfers of Marine Organisms (WGITMO) for recent records of *Bispira polyomma*; the SNO (Service National d'Observation) BenthOBS team for all discussions on these species. We acknowledge Sandra Sohier, Daniel Vaultot, David Borg, Wilfried Bay-Nouailhat, Jack Harrang, Willy Maillard, Aurélia Lachaud, Bernard Guillemot, James Guillon for their naturalist contributions. Moreover, we would like to thank both reviewers and the associate editor Agnese Marchini for taking the time reviewing our manuscript.

### Funding declaration

This work has been performed in the frameworks of the IMPECAPE research project granted by the French Agency for Biodiversity (OFB). Long term field and laboratory work was made possible through the financial support of the REBENT program coordinated by Sandrine Derrien (MNHN) and its funding partners (Agence de l'eau Loire-Bretagne, the Région Bretagne, Dreal Bretagne).

### Authors' contribution

GD and JG identified the interest to publish these records. GD designed the study with the guidance of BG, JG. GD, RG, AC, GG & JC conducted the fieldwork. All authors read, improved and approved the final manuscript.

### References

- Adams A, Reeve L (1850) Mollusca. In: Adams A (ed), The Zoology of the Voyage of H.M.S. Samarang, under the Command of Captain Sir Edward Belcher, C.B., F.R.A.S., F.G.S., during the Years 1843–1846. Pt. Reeve and Benham, London, x + 87 pp, 24 pls, <https://doi.org/10.5962/bhl.title.60405>
- Afonso I, Berecibar E, Castro N, Costa JL, Frias P, Henriques F, Moreira P, Oliveira PM, Silva G, Chainho P (2020) Assessment of the colonization and dispersal success of non-indigenous species introduced in recreational marinas along the estuarine gradient. *Ecological Indicators* 113: 106147, <https://doi.org/10.1016/j.ecolind.2020.106147>



- Aguirre O, San Martín G, Baratech L (1986) Presencia de la especie *Polydora colonia* Moore, 1907 (Polychaeta, Spionidae) en las costas españolas. *Miscelània Zoològica* 10: 375–377
- Allenou JP, Camus P, Bouget JF, Joly JP (2002) Schéma de Mise en Valeur de la Mer Golfe du Morbihan. Etude de l'état trophique du Golfe du Morbihan et croissance des huîtres creuses. Ifremer, station de La Trinité-sur-Mer, 69 pp
- Anton A, Geraldi NR, Lovelock CE, Apostolaki ET, Bennett S, Cebrian J, Krause-Jensen D, Marbà N, Martinetto P, Pandolfi JM, Santana-Garcon J, Duarte CM (2019) Global ecological impacts of marine exotic species. *Nature Ecology and Evolution* 3: 787–800, <https://doi.org/10.1038/s41559-019-0851-0>
- Ashton GV, Zabin CJ, Davidson IC, Ruiz GM (2022) Recreational boats routinely transfer organisms and promote marine bioinvasions. *Biological Invasions* 24: 1083–1096, <https://doi.org/10.1007/s10530-021-02699-x>
- Bailey SA, Brown L, Campbell ML, Canning-Clode J, Carlton JT, Castro N, Chainho P, Chan FT, Creed JC, Curd A, Darling J, Fofonoff P, Galil BS, Hewitt CL, Inglis GJ, Keith I, Mandrak NE, Marchini A, McKenzie CH, Occhipinti-Ambrogi A, Ojaveer H, Pires-Teixeira LM, Robinson TB, Ruiz GM, Seaward K, Schwindt E, Son MO, Theriault TW, Zhan A (2020) Trends in the detection of aquatic non-indigenous species across global marine, estuarine and freshwater ecosystems: A 50-year perspective. *Diversity and Distributions* 26: 1780–1797, <https://doi.org/10.1111/ddi.13167>
- Barnard JL (1965) Marine Amphipoda of the family Ampithoidae from Southern California. *Proceedings of the United States National Museum* 118: 1–46, <https://doi.org/10.1126/science.9.231.776>
- Bellan-Santini D, Karaman G, Krapp-Schikel G, Ledoyer M, Myers AA, Ruffo S, Schiecke U (1982) The Amphipoda of the Mediterranean. Mémoires de l'Institut océanographique, n° 13, Monaco, 364 pp
- Blackburn TM, Pyšek P, Bacher S, Carlton JT, Duncan RP, Jarošík V, Wilson JR, Richardson DM (2011) A proposed unified framework for biological invasions. *Trends in Ecology and Evolution* 26: 333–339, <https://doi.org/10.1016/j.tree.2011.03.023>
- Blackburn TM, Bellard C, Ricciardi A (2019) Alien versus native species as drivers of recent extinctions. *Frontiers in Ecology and the Environment* 17: 203–207, <https://doi.org/10.1002/fee.2020>
- Blake JA (1971) Revision of the Genus *Polydora* from the East Coast of North America (Polychaeta: Spionidae). *Smithsonian Contributions to Zoology* 75: 1–32, <https://doi.org/10.5479/si.00810282.75>
- Boeck A (1871) Crustacea amphipoda borealia et arctica. *Forhandlinger i Videnskabs-Selskabet i Christiania* 1870: 83–280, <https://doi.org/10.5962/bhl.title.2056>
- Bosc LAG (1802) Histoire Naturelle des Vers, contenant leur description et leurs moeurs; avec figures dessinées d'après nature. Chez Deterville, Paris, France, 300 pp, <https://doi.org/10.5962/bhl.title.59167>
- Bousfield EL (1973) Shallow-water gammaridean Amphipoda of New England. Cornell University Press: Ithaca, New York, 312 pp
- Brondizio ES, Settele J, Diaz S, Ngo HT (eds) (2019) Global assessment report of the Intergovernmental Science-Policy Platform on Biodiversity and Ecosystem Services. IPBES, 56 pp
- Burrows MT, Schoeman DS, Richardson AJ, Molinos JG, Hoffmann A, Buckley LB, Moore PJ, Brown CJ, Bruno JF, Duarte CM, Halpern BS, Hoegh-Guldberg O, Kappel C V., Kiessling W, O'Connor MI, Pandolfi JM, Parmesan C, Sydeman WJ, Ferrier S, Williams KJ, Poloczanska ES (2014) Geographical limits to species-range shifts are suggested by climate velocity. *Nature* 507: 492–495, <https://doi.org/10.1038/nature12976>
- Burton M (1930) Additions to the Sponge Fauna at Plymouth. *Journal of the Marine Biological Association of the United Kingdom* 16: 489–507, <https://doi.org/10.1017/S0025315400072891>
- Burton M (1935) Some sponges from the Okhotsk Sea and the Sea of Japan. *Exploration des Mers de l'URSS* 22: 61–79
- Catford JA, Bode M, Tilman D (2018) Introduced species that overcome life history tradeoffs can cause native extinctions. *Nature Communications* 9: 2131, <https://doi.org/10.1038/s41467-018-04491-3>
- Chevreaux E, Fage L (1925) Amphipodes. Paris, France, 488 pp
- Conlan KE, Bousfield EL (1982) The amphipod superfamily Corophioidea in the Northeastern Pacific region. Family Ampithoidae: systematics and distributional ecology. *Publications in Biological Oceanography* 11: 41–75
- Cottier-Cook EJ, Beveridge C, Bishop JDD, Brodie J, Clark PF, Epstein G, Jenkins SR, Johns DG, Loxton J, Macleod A, Maggs C, Minchin D, Mineur F, Sewell J, Wood CA (2017) Non-Native Species. *Marine Climate Change Impacts Partnership: Science Review* 2017: 47–61, <https://doi.org/10.14465/2017.arc10.005-nns>
- David AA, Williams JD (2012) Asexual reproduction and anterior regeneration under high and low temperatures in the sponge associate *Polydora colonia* (Polychaeta: Spionidae). *Invertebrate Reproduction and Development* 56: 315–324, <https://doi.org/10.1080/07924259.2011.638404>

- Dinter WP (2001) Biogeography of the OSPAR Maritime Area. Federal Agency for Nature Conservation, Bonn, Germany, 168 pp
- Droual G, Garrec V Le, Cabelguen J, Gélinaud G, Grall J (2017) The spread goes on: the non-indigenous species *Grandidierella japonica* Stephensen, 1938 (Amphipoda: Aoridae) has reached Brittany (Gulf of Morbihan). *An Aod - Les cahiers naturalistes de l'Observatoire marin* 5(1): 21–29
- Earp H, Vye S, Bohn K, Burrows M, Chenery J, Dickens S, Foster C, Grist H, Lamont P, Long S, Morrall Z, Pocklington J, Scott A, Watson G, West V, Jenkins S, Delany J, Sugden H (2022) Do You See What I See? Quantifying Inter-Observer Variability in an Intertidal Marine Citizen Science Experiment. *Citizen Science: Theory and Practice* 7: 1–13, <https://doi.org/10.5334/cstp.483>
- Ehrhold A, Jouet G, Roy P Le, Jorry SJ, Grall J, Reixach T, Lambert C, Gregoire G, Goslin J, Roubi A, Penaud A, Vidal M, Siano R (2021) Fossil maerl beds as coastal indicators of late Holocene palaeo-environmental evolution in the Bay of Brest (Western France). *Palaeogeography, Palaeoclimatology, Palaeoecology* 577: 110525, <https://doi.org/10.1016/j.palaeo.2021.110525>
- Ellis J (1768) Extract of a letter from John Ellis, Esquire, F.R.S. to Dr. Linnaeus of Upsala, F.R.S. on the animal nature of the genus of zoophytes, called Corallina. *Philosophical Transactions of the Royal Society of London* 57: 404–425, <https://doi.org/10.1098/rstl.1767.0042>
- Ellis J, Solander DC (1786) The natural history of many curious and uncommon zoophytes: collected from various parts of the globe. Benjamin White and Son, London, United-Kingdom, 206 pp, <https://doi.org/10.5962/bhl.title.64985>
- Essl F, Dullinger S, Genovesi P, Hulme PE, Jeschke JM, Katsanevakis S, Kühn I, Lenzner B, Pauchard A, Pyšek P, Rabitsch W, Richardson DM, Seebens H, Kleunen M Van, Putten WH Van Der, Vilà M, Bacher S (2019) A Conceptual Framework for Range-Expanding Species that Track Human-Induced Environmental Change. *BioScience* 69: 908–919, <https://doi.org/10.1093/biosci/biz101>
- Faasse MA (2015) New records of the non-native amphipod *Ampithoe valida* in Europe. *Marine Biodiversity Records* 8: 1–4, <https://doi.org/10.1017/S1755267215000706>
- Faasse MA, Giangrande A (2012) Description of *Bispira polyomma* n. sp. (Annelida: Sabellidae): A probable introduction to The Netherlands. *Aquatic Invasions* 7: 591–598, <https://doi.org/10.3391/ai.2012.7.4.016>
- Faulkner KT, Robertson MP, Wilson JR (2020) Stronger regional biosecurity is essential to prevent hundreds of harmful biological invasions. *Global Change Biology* 26: 2449–2462, <https://doi.org/10.1111/gcb.15006>
- Gauff RPM, Davoult D, Greff S, Bohner O, Coudret J, Jacquet S, Loisel S, Rondeau S, Sevin L, Wafo E, Lejeune C (2022) Pollution gradient leads to local adaptation and small-scale spatial variability of communities and functions in an urban marine environment. *Science of The Total Environment* 838: 155911, <https://doi.org/10.1016/j.scitotenv.2022.155911>
- Giangrande A, Licciano M, Wasson B (2015) Guide to identification of Sabellidae and Fabriciidae (Polychaeta) in north east Atlantic and Mediterranean waters. Newcastle, United-Kingdom, 91 pp
- Gil JCF (2011) The European fauna of Annelida Polychaeta. PhD thesis, Universisade de Lisboa, Lisboa, Portugal, 1554 pp
- Gittenberger A, Olthof G, Os V Van, Plas M Van Der, Schop S, Vries A De, Windt N Van Der (2015) *Bispira polyomma* in Roompot marina. *Het Zeepaard* 75(6): 194–196
- Gmelin JF (1791) Vermes. In: Gmelin JF (ed), *Caroli a Linnaei Systema Naturae per Regna Tria Naturae*, Ed. 13. Tome 1(6). G.E. Beer, Lipsiae (Leipzig), pp 3021–3910
- Gouillieux B (2017) New records of benthic amphipods, *Jassa slatteryi* conlan, 1990 and *Ampithoe valida* Smith, 1873 (Crustacea: Peracarida: Amphipoda) for the Bay of Biscay, France, with morphological notes. *Cahiers de Biologie Marine* 58: 279–289, <https://doi.org/10.21411/CBM.A.F205EFDE>
- Gouillieux B, Droual G (2020) *Leucothoe denticulata* Costa, 1851 (Crustacea: Amphipoda: Leucothoidea): a Mediterranean species belonging to the *Leucothoe spinicarpa* (Abildgaard, 1789) complex well present along the French Atlantic coasts. *Cahiers de Biologie Marine* 61: 239–251, <https://doi.org/10.21411/CBM.A.EC29DCF3>
- Gouillieux B, Masse C, Derrien-courtel S, Bachelet G, Lavesque N (2022) A non-indigenous annelid (*Polydora colonia*) in an invasive sponge (*Celtodoryx ciocalyptoides*): double penalty in Arcachon Bay (NE Atlantic). 63: 29–38, <https://doi.org/10.21411/CBM.A.4670BBA3>
- Grube AE (1850) Die Familien der Anneliden. *Archiv für Naturgeschichte* 16(1): 249–364
- Harper KE, Scheinberg LA, Boyer KE, Sotka EE (2022) Global distribution of cryptic native, introduced and hybrid lineages in the widespread estuarine amphipod *Ampithoe valida*. *Conservation Genetics* 23: 791–806, <https://doi.org/10.1007/s10592-022-01452-8>
- Hewitt CL, Gollasch S, Minchin D (2009) The Vessel as a Vector - Biofouling, Ballast Water and Sediments. In: Rilov G, Crooks JA (eds), *Biological Invasions in Marine Ecosystems*. Springer, Berlin Heidelberg, Germany, pp 117–131, [https://doi.org/10.1007/978-3-540-79236-9\\_6](https://doi.org/10.1007/978-3-540-79236-9_6)
- Hutchings PA, Lavesque N (2020) I know who you are, but do others know? Why correct scientific names are so important for the biological sciences. *Zoosymposia* 19: 151–163, <https://doi.org/10.11646/zoosymposia.19.1.16>
- ICES (2022) ICES Working Group on the Introduction and Transfer of Marine Organisms (WGITMO). ICES Scientific Reports/Rapports scientifiques du CIEM (in press)

- Kenworthy JM, Rolland G, Samadi S, Lejeune C (2018) Local variation within marinas: Effects of pollutants and implications for invasive species. *Marine Pollution Bulletin* 133: 96–106, <https://doi.org/10.1016/j.marpolbul.2018.05.001>
- Kim YH (2011) Invertebrate Fauna of Korea. Arthropoda: Crustacea: Malacostraca: Amphipoda: Corophiidea, Gammaridea. Side swimmers I, Volume 21. National institute of biological resources, 130 pp
- Krøyer H (1856) Afhandling om Ormeslaegten *Sabella* Linn., isaer med Hensyn til dens nordiske Arter [Alternate title: Bidrag til Kundskab af Sabellerne]. Oversigt over det Kongelige danske Videnskabernes Selskabs Forhandling, 36 pp
- Laeseke P, Schiller J, Letschert J, Doolittle Llanos S (2020) Theories, Vectors, and Computer Models: Marine Invasion Science in the Anthropocene. In: Jungblut S, Liebich V, Bode-Dalby M (eds), YOUMARES 9 - The Oceans: Our Research, Our Future. Proceedings of the 2018 Conference for YOUng MARine RESEARCHer in Oldenburg, Germany. Springer Cham, Switzerland, pp 195–209, <https://doi.org/10.1007/978-3-030-20389-4>
- Lamarck JB de (1802 [privately published, reprinted 1906]). Discours d'Ouverture, Prononcé le 27 floréal An 10, au Muséum d'Histoire naturelle. Recherches sur l'organisation des corps vivants. *Bulletin Scientifique de la France et de la Belgique (5<sup>th</sup> series)* 40: 483–517
- Lang A (1884) Die Polycladen (Seeplanarien) des Golfes von Neapel und der angrenzenden Meerabschnitte. *Fauna und Flora des Golfes von Neapel* 11: 1–688, <https://doi.org/10.5962/bhl.title.10545>
- Langeneck J, Minasidis V, Doumpas N, Giovos I, Kaminas A, Kleitou P, Tiralongo F, Crocetta F (2022) Citizen Science Helps in Tracking the Range Expansions of Non-Indigenous Species in Greece and Cyprus (Eastern Mediterranean Sea). *Journal of Marine Science and Engineering* 10: 1–12, <https://doi.org/10.3390/jmse10020256>
- Latreille PA (1816) Nouveau dictionnaire d'histoire naturelle, appliquée aux arts, à l'agriculture, à l'économie rurale et domestique, à la médecine, etc. *Par une Société de Naturalistes et d'Agriculteurs. Nouvelle Édition, Paris* 1: 467–469
- Latreille PA (1825) Familles naturelles du règne animal, exposées succinctement et dans un ordre analytique avec l'indication de leurs genres. J. B. Baillière, Paris, France, 570 pp, <https://doi.org/10.5962/bhl.title.34914>
- Le Roux A (2018) Additions à la liste des espèces marines introduites dans le golfe du Morbihan. *Penn ar Bed* 230: 37–60
- Leach WE (1814) Crustaceology. In: Brewster D (ed), *The Edinburgh Encyclopaedia*. A. Balfour, Edinburgh, United-Kingdom, pp 383–437, <https://doi.org/10.5962/bhl.title.30911>
- Lecroy SE (2002) An illustrated guide to the nearshore marine and estuarine Gammaridean Amphipoda of Florida Vol. 2 Families Ampeliscidae, Amphilochidae, Ampithoidae, Aoridae, Argissidae and Haustoriidae. Tallahassee, Florida, pp 197–410
- Lehtiniemi M, Outinen O, Puntilla-dodd R (2020) Citizen science provides added value in the monitoring for coastal non-indigenous species. *Journal of Environmental Management* 267: <https://doi.org/10.1016/j.jenvman.2020.110608>
- Lemoine M (1928) Un nouveau genre de Mélobésiées: *Mesophyllum*. *Bulletin de la Société Botanique de France* 75: 251–254, <https://doi.org/10.1080/00378941.1928.10836268>
- Lenoir J, Bertrand R, Comte L, Bourgeaud L, Hattab T, Murienne J, Grenouillet G (2020) Species better track climate warming in the oceans than on land. *Nature Ecology and Evolution* 4: 1044–1059, <https://doi.org/10.1038/s41559-020-1198-2>
- Levinsen GMR (1883) Systematisk-geografisk Oversigt over de nordiske Annulata, Gephyrea, Chaetognathi og Balanoglossi. Videnskabelige Meddelelser fra Dansk naturhistorisk Forening i København, 1882. 160–251, <https://doi.org/10.5962/bhl.title.16117>
- Lincoln RJ (1979) British marine Amphipoda: Gammaridea. British Museum (Natural History), London, United Kingdom, 657 pp
- Linnaeus C (1758) *Systema Naturae per regna tria naturae, secundum classes, ordines, genera, species, cum characteribus, differentiis, synonymis, locis.*, Volume 1. Laurentius Salvius, Stockholm, Sweden, 824 pp, <https://doi.org/10.5962/bhl.title.542>
- López-Acosta M, Maldonado M, Grall J, Ehrhold A, Sitjà C, Galobart C, Leynaert A (2022) Sponge contribution to the silicon cycle of a diatom-rich shallow bay. *Limnology and Oceanography* 67: 2431–2447, <https://doi.org/10.1002/lno.12211>
- Marquina D, Fernández-Álvarez FÁ, Noreña C (2015) Five new records and one new species of Polycladida (Platyhelminthes) for the Cantabrian coast (North Atlantic) of the Iberian Peninsula. *Journal of the Marine Biological Association of the United Kingdom* 95: 311–322, <https://doi.org/10.1017/S0025315414001106>
- Mills EL (1964) Noteworthy Amphipoda (Crustacea) in the Collection of the Yale Peabody Museum. *Postilla* 79: 1–41
- Minot CS (1876) On the classification of some of the lower worms. *Proceedings of the Boston Society of Natural History* 19: 17–25
- Molnar JL, Gamboa RL, Revenga C, Spalding MD (2008) Assessing the global threat of invasive species to marine biodiversity. *Frontiers in Ecology and the Environment* 6: 485–492, <https://doi.org/10.1890/070064>

- Moore PJ (1907) Descriptions of new species of spioniform annelids. *Proceedings of the Academy of Natural Sciences of Philadelphia* 59: 195–207
- Noreña C, Marquina D, Perez J, Almon B (2014) First records of *Cotylea* (Polycladida, Platyhelminthes) for the Atlantic coast of the Iberian Peninsula. *ZooKeys* 404: 1–22, <https://doi.org/10.3897/zookeys.404.7122>
- Occhipinti-Ambrogi A (2007) Global change and marine communities: Alien species and climate change. *Marine Pollution Bulletin* 55: 342–352, <https://doi.org/10.1016/j.marpolbul.2006.11.014>
- Pallas PS (1766) *Elenchus zoophytorum sistens generum adumbrationes generaliores et specierum cognitarum succinctas descriptiones, cum selectis auctorum synonymis*. Fransiscum Varrentrapp, Hagae, 451 pp, <https://doi.org/10.5962/bhl.title.6595>
- Perez-Belmonte L (2008) Caractérisation environnementale, morphosédimentaire et stratigraphique du Golfe du Morbihan pendant l'Holocène terminal: implications évolutives. PhD Thesis, Université de Bretagne Sud, Rennes, France, 215 pp
- Pilgrim EM, Darling JA (2010) Genetic diversity in two introduced biofouling amphipods (*Ampithoe valida* & *Jassa marmorata*) along the Pacific North American coast: Investigation into molecular identification and cryptic diversity. *Diversity and Distributions* 16: 827–839, <https://doi.org/10.1111/j.1472-4642.2010.00681.x>
- Pinsky ML, Selden RL, Kitchel ZJ (2020) Climate-Driven Shifts in Marine Species Ranges: Scaling from Organisms to Communities. *Annual Review of Marine Science* 12: 153–179, <https://doi.org/10.1146/annurev-marine-010419-010916>
- Poloczanska ES, Brown CJ, Sydeman WJ, Kiessling W, Schoeman DS, Moore PJ, Brander K, Bruno JF, Buckley LB, Burrows MT, Duarte CM, Halpern BS, Holding J, Kappel CV, O'Connor MI, Pandolfi JM, Parmesan C, Schwing F, Thompson SA, Richardson AJ (2013) Global imprint of climate change on marine life. *Nature Climate Change* 3: 919–925, <https://doi.org/10.1038/nclimate1958>
- Rondeau S, Davoult D, Lejeune C, Kenworthy JM, Bohner SL, Gauff R (2022) Persistence of dominance of non-indigenous species in the inner part of a marina highlighted by multi-year photographic monitoring. *Marine Ecology Progress Series* 690: 15–30, <https://doi.org/10.3354/meps14052>
- Rouse GW, Fauchald K (1997) Cladistics and polychaetes. *Zoologica Scripta* 26: 139–204, <https://doi.org/10.1111/j.1463-6409.1997.tb00412.x>
- Ruellet T (2004) Infestation des coquilles d'huitres *Crassostrea gigas*. PhD Thesis, Université de Caen, Caen, France, 536 pp
- Sardain A, Sardain E, Leung B (2019) Global forecasts of shipping traffic and biological invasions to 2050. *Nature Sustainability* 2: 274–282, <https://doi.org/10.1038/s41893-019-0245-y>
- Schmarda LK (1859) *Neue Turbellarien, Rotatorien und Anneliden, Beobachtet und Gesammelt auf einer Reise um die Erde 1853 bis 1857, Volume 1*. W. Engelmann, Leipzig, Germany, 66 pp, <https://doi.org/10.5962/bhl.title.14426>
- Shin MH, Kim IH, Lee KS (2005) Three species of gammaridean amphipods (Crustacea) associated with cultured abalones (Gastropoda) in Korea. *The Korean Journal of Systematic Zoology* 21(2): 157–169
- von Siebold CT (1848) *Lehrbuch der vergleichenden Anatomie der Wirbellosen Thiere. Erster Theil*. In: Siebold CT, Stannius H (eds), *Lehrbuch der vergleichenden Anatomie*, Verlag von Veit & Comp, Berlin, 679 pp, <https://doi.org/10.5962/bhl.title.118645>
- Smith SI (1873) Crustacea, ex. Isopoda. In: AE Verrill's "Report upon the invertebrate animals of Vineyard Sound ...." U.S. Commission of Fish and Fisheries. Pt. 1. Report on the Condition of the Sea Fisheries of the South Coast of New England in 1871 and 1872. 1873, pp 295–778
- Sorte CJB, Williams SL, Carlton JT (2010) Marine range shifts and species introductions: Comparative spread rates and community impacts. *Global Ecology and Biogeography* 19: 303–316, <https://doi.org/10.1111/j.1466-8238.2009.00519.x>
- Sotka EE, Bell T, Hughes LE, Lowry JK, Poore AGBB (2017) A molecular phylogeny of marine amphipods in the herbivorous family Ampithoidae. *Zoologica Scripta* 46: 85–95, <https://doi.org/10.1111/zsc.12190>
- Stephensen K (1938) *Grandidierella japonica* n. sp., a new amphipod with stridulating (?) organs from brackish water in Japan. *Annotationes Zoologicae Japonenses* 17(85): 2–8
- Stimpson W (1857) *Prodromus descriptionis animalium evertibratorum, quae in Expeditione ad Oceanum Pacificum Septentrionalem a Republica Federata missa, Johanne Rodgers Duce, observavit et descripsit. Pars I, Turbellaria Dendrocoela*. *Proceedings of the Academy of Natural Sciences of Philadelphia* 9: 19–31, <https://doi.org/10.5962/bhl.title.51447>
- Struck TH, Feder JL, Bendiksbj M, Birkeland S, Cerca J, Gusarov VI, Kistenich S, Larsson K henrik, Liow LH, Nowak MD, Stedje B, Bachmann L, Dimitrov D (2018) Finding Evolutionary Processes Hidden in Cryptic Species. *Trends in Ecology & Evolution* 33: 153–163, <https://doi.org/10.1016/j.tree.2017.11.007>
- Tena J, Capaccioni-Azzati R, Porras R, Torres-Gavila F (1991) Cuatro especies de poliquetos nuevas para las costas mediterráneas españolas en los sedimentos del antepuerto de Valencia. *Miscellània zoològica* 15: 29–41

- Tena J, Capaccioni-Azzati R, Torres-Gavila FJ, Garcia-Carrascosa AM (2000) Polychaetes associated with different facies of the photophilic algal community in the Chafarinas archipelago (SW Mediterranean). *Bulletin of Marine Science* 67(1): 55–72
- Thunberg CP (1793) Tekning och Beskrifning på en stor Ostronsort ifrån Japan. *Kongliga Vetenskaps Akademiens Nya Handlingar* 14(4–6): 140–142
- Tsiamis K, Zenetos A, Deriu I, Gervasini E, Cardoso AC (2018) The native distribution range of the European marine non-indigenous species. *Aquatic Invasions* 13: 187–198, <https://doi.org/10.3391/ai.2018.13.2.01>
- Urban MC (2020) Climate-tracking species are not invasive. *Nature Climate Change* 10: 382–384, <https://doi.org/10.1038/s41558-020-0770-8>
- Vilà M, Basnou C, Pyšek P, Josefsson M, Genovesi P, Gollasch S, Nentwig W, Olenin S, Roques A, Roy D, Hulme PE, Andriopoulos P, Arianoutsou M, Bazos I, Kokkoris I, Yannitsaros A, Zikos A, Augustin S, Cochard PO, Lopez-Vaamonde C, Sauvard D, Yart A, Bacher S, Bretagnolle F, Gasquez J, Chiron F, Kark S, Shirley S, Clergeau P, Coquempot C, Coeur d'Acier A, Dorkeld F, Migeon A, Navajas M, David M, Delipetrou P, Georghiou K, Desprez-Loustau ML, Didziulis V, Essl F, Galil BS, Hejda M, Jarosik V, Pergl J, Perglová I, Kühn I, Winter M, Kühn PW, Marcer A, Pino J, McLoughlin M, Minchin D, Panov VE, Pascal M, Pobljsaj K, Scalera R, Sedláček O, Zagatti P (2010) How well do we understand the impacts of alien species on ecosystem services? A pan-European, cross-taxa assessment. *Frontiers in Ecology and the Environment* 8: 135–144, <https://doi.org/10.1890/080083>
- Wallingford PD, Morelli TL, Allen JM, Beaury EM, Blumenthal DM, Bradley BA, Dukes JS, Early R, Fusco EJ, Goldberg DE, Ibáñez I, Laginhas BB, Vilà M, Sorte CJB (2020) Adjusting the lens of invasion biology to focus on the impacts of climate-driven range shifts. *Nature Climate Change* 10: 398–405, <https://doi.org/10.1038/s41558-020-0768-2>
- Weerasena L, Hunt N, Bandara D, McKnight M (2022) Spatially explicit multi-objective mathematical model for invasive species management. *Biological Invasions* 24: 1839–1862, <https://doi.org/10.1007/s10530-022-02754-1>

## Web sites and online databases

- OBCE (2021) Observatoire Breton Des Changements Sur l'estran. <https://www.estran-bretagne-vivante.org/> (accessed 29 June 2022)

## Supplementary material

The following supplementary material is available for this article:

**Figure S1:** *Ampithoe valida* Smith, 1873 missing or inconsistent morphological characters noticed throughout the literature.

**Table S1:** *Ampithoe valida* Smith, 1873 morphological variations, in males with a comparison between the recent redescription (Gouillieux, 2017) and the specimens from this study.

**Table S2:** *Ampithoe valida* Smith, 1873, morphological variations between the description from Gouillieux (2017) and the characters observed from the deposited materials MNHN-IU-2014-12860 and MNHN-IU-2014-12861.

**Table S3:** French records of *Prostheceraeus moseleyi* Lang, 1884.

This material is available as part of online article from:

[http://www.reabic.net/journals/bir/2024/Supplements/BIR\\_2024\\_Droual\\_etal\\_SupplementaryFigure.pdf](http://www.reabic.net/journals/bir/2024/Supplements/BIR_2024_Droual_etal_SupplementaryFigure.pdf)

[http://www.reabic.net/journals/bir/2024/Supplements/BIR\\_2024\\_Droual\\_etal\\_SupplementaryTables.xlsx](http://www.reabic.net/journals/bir/2024/Supplements/BIR_2024_Droual_etal_SupplementaryTables.xlsx)