



HAL
open science

Longitudinal tracking changes through multiparametric MRI during repeated MRgFUS-induced BBB opening

Sébastien Rigollet, Thomas Ador, Erik Dumont, Chantal Pichon, Emmanuel L Barbier, Anthony Delalande, Vasile Stupar

► To cite this version:

Sébastien Rigollet, Thomas Ador, Erik Dumont, Chantal Pichon, Emmanuel L Barbier, et al.. Longitudinal tracking changes through multiparametric MRI during repeated MRgFUS-induced BBB opening. 2024 International Society for Magnetic Resonance in Medecine & International Society for MR Radiographers & Technologists Annual Meeting & Exhibition, May 2024, Singapour, Singapore. hal-04606240

HAL Id: hal-04606240

<https://hal.science/hal-04606240>

Submitted on 10 Jun 2024

HAL is a multi-disciplinary open access archive for the deposit and dissemination of scientific research documents, whether they are published or not. The documents may come from teaching and research institutions in France or abroad, or from public or private research centers.

L'archive ouverte pluridisciplinaire **HAL**, est destinée au dépôt et à la diffusion de documents scientifiques de niveau recherche, publiés ou non, émanant des établissements d'enseignement et de recherche français ou étrangers, des laboratoires publics ou privés.



Distributed under a Creative Commons Attribution - NonCommercial - NoDerivatives 4.0 International License

Longitudinal study tracking physiological changes through multiparametric MRI during repeated MRgFUS-induced BBB opening

Sébastien Rigollet^{1,2}, Thomas Ador^{3,4}, Erik Dumont¹, Chantal Pichon^{3,4,5}, Emmanuel Barbier^{2,6}, Anthony Delalande^{3,4}, and Vasile Stupar^{2,6}

¹Image Guided Therapy, Pessac, France, ²Univ. Grenoble Alpes, Inserm U1216, Grenoble Institut des Neurosciences, Grenoble, France, ³Université d'Orléans, CNRS, UPR 4301, Centre de Biophysique Moléculaire, Orléans, France, ⁴ART ARNm, Inserm UM555 and University of Orléans, Orléans, France, ⁵Institut Universitaire de Paris, Paris, France, ⁶Univ. Grenoble Alpes, Inserm, CHU Grenoble Alpes, CNRS, IRMaGe, Grenoble, France

Synopsis

Motivation: Long-term delivery of therapeutic agents via repeated MRgFUS is an innovative approach for enhancing glioblastoma treatment but underlying mechanisms are not well documented.

Goal(s): Find the best strategy for long-term drug delivery after multiple MRgFUS mediated BBB opening.

Approach: Repeated MRgFUS treatments were delivered up to 8 sessions over one month along with a multi-parametric MRI protocol follow-up to measure physiological, hemodynamic and oxygenation parameters in order to assess the safety and effectiveness of the procedure.

Results: Intensive, repeated treatments, may lead to tissue modifications that require attention and limit the frequency of ultrasound mediated drug delivery to once a week.

Impact: Long-term delivery of therapeutics through a FUS-induced permeabilized BBB redefines therapeutic strategies as it improves patient outcomes. To ensure the best translation towards clinical treatment, evaluation of hemodynamics and oxygenation modifications in the CNS is necessary to refine treatment parameters.

Introduction

Our study assesses, using a multi-parametric MRI protocol, the cerebral blood flow (CBF), blood volume fraction (Bvf), vessel size index (VSI), oxygen saturation (SO₂), water apparent diffusion coefficient (ADC) in order to evaluate the bioeffects of repeated blood-brain barrier (BBB) opening using FUS. BBB permeability was assessed using a dynamic contrast enhanced sequence (DCE). The Area Under the Curve (AUC) was used as a reporter of BBB permeability.

Method

BBB was permeabilized in subcortical regions repeatedly with MR-guided FUS on Wistar rats during 4 weeks either once or twice a week. A control group received a single FUS exposure and was monitored during 4 weeks (Fig.1). We opened the BBB with homemade lipidic microbubbles (1.5E8 MB) followed by a raster scan of 4x3.2mm² with continuous 1.5MHz ultrasound pulses. The 7-concentric elements transducer was moving at a speed of 10mm/s¹ during 40s. Two pressures were tested in order to deliver 390kPa and 440kPa peak negative pressure in situ². A multi-parametric MRI protocol³ was acquired just after each FUS treatment to measure ADC, CBF, Bvf, SO₂ and DCE parameters (Fig.2). Pseudo Continuous Arterial Spin Labeling (pCASL) datasets⁴ were acquired to reconstruct CBF maps. Calculation of Bvf and SO₂ parameters required the injection of USPIO (Micromod, 200µmol iron/kg) in the vascular system before and after the acquisition of two MGEFIDSE (TR/TE=60/4000ms; FOV=30x30mm²; matrix=128x128mm²; 7, 1mm-thick, slices; tacq=6min24s). Finally, to measure vessel permeability, a bolus of Gd-DOTA (200µmol/kg) was injected one minute after the start of the DCE sequence (TR/TE=4/800ms; FOV=30x30mm²; matrix=128x128mm²; 19, 1mm-thick, slices, tacq=6min20s).

Results

Rats followed normal weight gain and the BBB was permeabilized reliably with each FUS treatment (Fig.3.C) as shown by the significant increase in AUC-DCE (Fig.3.A) without any evident damage on T2-w images. No significant changes in ADC and T1 were measured between ipsi- and contralateral regions. One can observe that Bvf is reduced after delivering the FUS treatment from 6% to 12% in the most intensive case and a significant difference is observed at week 4 between the group that received 8 treatments compared to the one that received 4 treatments at 440kPa (Fig.4.A). We can observe a gap in the Bvf reduction between the group with 4 treatments compared to the group with 8 treatments suggesting a dependance between the number of sessions per week and the Bvf reduction. CBF is increasingly reduced in the region treated as the FUS treatment intensifies up to 38% (Fig.4.B). Oxygenation measurements show significant differences between week 1 and week 4 in the treated region (Fig.5.A.) for 3 treatments out of 4. Plus SO₂ is significantly reduced at week 4 in the treated area compared to contralateral for both groups that received 8 treatments compared to those who received only 4. No significant difference in the measure of VSI is observed while comparing ipsi- and contralateral regions, still, the difference tends to become more pronounced as treatment intensifies (Fig.5.B).

Discussion

CBF values measured in the treated area are always above 50mL/min/100g and the perfusion drop is transient⁵. Therefore, we are not in a critical situation. Note that CBF measurements depend on the depth of anesthesia and end-tidal CO₂. As we did not control these parameters, inter-individual and inter-session variability may have occurred. Similar to CBF, MR estimation of SO₂ values in the ipsilateral region are always above the hypoxic threshold equal to 40%⁶, while the mean in the contralateral region is equal to 68.57%±5.22 [SD], a value comparable with values from literature⁷. Finally, Gd-DOTA injections were administered at the end of the protocol. Consequently, the BBB had already initiated its reconstruction process, potentially resulting in slightly lower values of DCE parameters.






Conclusion

Long-term BBB is safe for both acoustic pressures and both strategies but is associated with effects that should not be underestimated such as the reduction in CBF and SO₂ in the treated region as the FUS treatment becomes more intense. Regarding the translation of these therapeutic strategies to deliver anti-tumor drugs to glioblastoma models on rats, one should not exceed one session per week. As a hypoxic environment suits best to tumor development that could be caused by too closely spaced FUS treatment sessions. Particular attention should be paid to the translation towards clinics as these modifications in hemodynamics and oxygen saturation can become significant, depending on the FUS treatment strategy.

Acknowledgements

The IRMaGe facility are gratefully acknowledged as well as FRC Neurodon for the fundings.

References

1. M.-S. Felix et al., "Ultrasound-Mediated Blood-Brain Barrier Opening Improves Whole Brain Gene Delivery in Mice," *Pharmaceutics*, vol. 13, no. 8, p. 1245, Aug. 2021, doi: 10.3390/pharmaceutics13081245. 
2. M. Gerstenmayer, B. Fella, R. Magnin, E. Selingue, and B. Larrat, "Acoustic Transmission Factor through the Rat Skull as a Function of Body Mass, Frequency and Position," *Ultrasound in Medicine & Biology*, vol. 44, no. 11, pp. 2336–2344, Nov. 2018, doi: 10.1016/j.ultrasmedbio.2018.06.005. 
3. L. S. B. Boisserand et al., "Multiparametric magnetic resonance imaging including oxygenation mapping of experimental ischaemic stroke," *J Cereb Blood Flow Metab*, vol. 37, no. 6, pp. 2196–2207, Jun. 2017, doi: 10.1177/0271678X16662044. 
4. L. Hirschler, C. S. Debacker, J. Voiron, S. Köhler, J. M. Warnking, and E. L. Barbier, "Interpulse phase corrections for unbalanced pseudo-continuous arterial spin labeling at high magnetic field: RF Phase Optimization for Unbalanced pCASL," *Magn. Reson. Med.*, vol. 79, no. 3, pp. 1314–1324, Mar. 2018, doi: 10.1002/mrm.26767. 
5. S. Rigollet, A. Delalande, E. Dumont, C. Pichon, E. L. Barbier, and V. Stupar, "Cerebral perfusion monitoring after FUS mediated blood-brain barrier opening: a study to evaluate ultrasound bioeffect." 22nd Annual International Symposium on Therapeutic Ultrasound (ISTU 2023), Lyon, France, Apr. 2023, hal-04215096.
6. B. Lemasson et al., "Evaluation of the Relationship between MR Estimates of Blood Oxygen Saturation and Hypoxia: Effect of an Antiangiogenic Treatment on a Gliosarcoma Model," *Radiology*, vol. 265, no. 3, pp. 743–752, Dec. 2012, doi: 10.1148/radiol.12112621.
7. T. Christen et al., "Evaluation of a quantitative blood oxygenation level-dependent (qBOLD) approach to map local blood oxygen saturation," *NMR Biomed.*, p. n/a-n/a, 2010, doi: 10.1002/nbm.1603. 

Figures

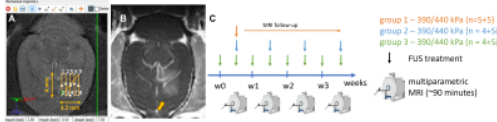


Figure 1: A) MR guided FUS trajectory of $3.2 \times 4\text{mm}^2$ drawn on a T2-w scan on Thermoguide®. The striatum is a large subcortical structure allowing an homogeneous BBB opening and it can be targeted easily from one session to another. B) The corresponding T1-w image after Gd-DOTA injection. C) Study overview for the 3 groups with the FUS treatment. timepoints.

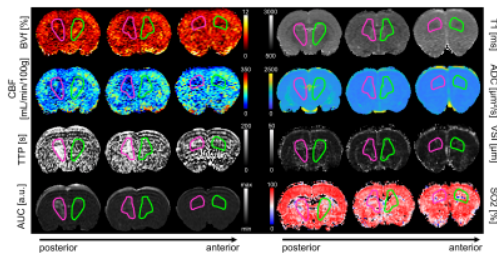


Figure 2 : Example of calculated BVf, ADC, Time To Peak (TTP), AUC, T1, ADC, VSI and estimated SO2 maps after the 2nd session of treatment at 390 kPa with treated and contralateral regions respectively in purple and green.

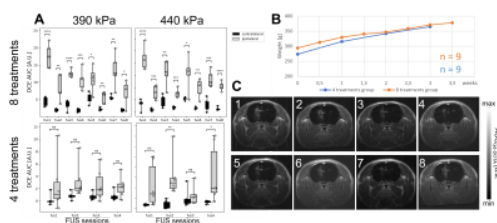


Figure 3 : AUC (A) and weight (B) evolution along the FUS treatments. C) Example of AUC maps computed from DCE sequence acquired after each 8 sessions FUS treatment at 440 kPa.

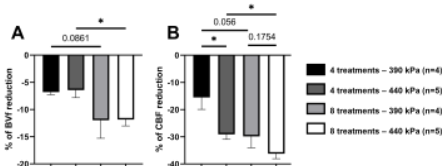


Figure 4 : % of modification between ipsi- and contralateral regions for BVf (A) and CBF (B) after the last treatment session for the different FUS treatments. Values are expressed as mean \pm SEM, Student t-tests were performed (* $p < 0.05$).

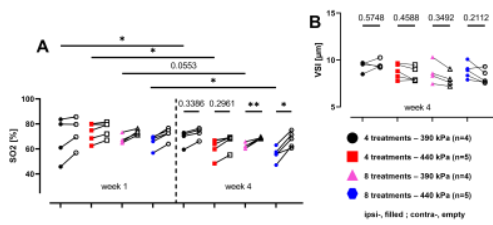


Figure 5 : A) SO2 in ipsi- and contralateral regions at week 1 and week 4, B) VSI in ipsi- and contralateral regions at week 4. Student t-tests were performed (*p < 0.05; **p < 0.01).