



**HAL**  
open science

## Motor anticipation is disrupted during fine and gross motor control in ASD children

Aurélie Benchekri, L Fradet, Romain Tisserand, H Cottenceau, É Lemonnier,  
A Amestoy, Christel Bidet-Ildei

► **To cite this version:**

Aurélie Benchekri, L Fradet, Romain Tisserand, H Cottenceau, É Lemonnier, et al.. Motor anticipation is disrupted during fine and gross motor control in ASD children. IN SAR 2024, May 2024, Melbourne, France. hal-04598280

**HAL Id: hal-04598280**

**<https://hal.science/hal-04598280>**

Submitted on 3 Jun 2024

**HAL** is a multi-disciplinary open access archive for the deposit and dissemination of scientific research documents, whether they are published or not. The documents may come from teaching and research institutions in France or abroad, or from public or private research centers.

L'archive ouverte pluridisciplinaire **HAL**, est destinée au dépôt et à la diffusion de documents scientifiques de niveau recherche, publiés ou non, émanant des établissements d'enseignement et de recherche français ou étrangers, des laboratoires publics ou privés.



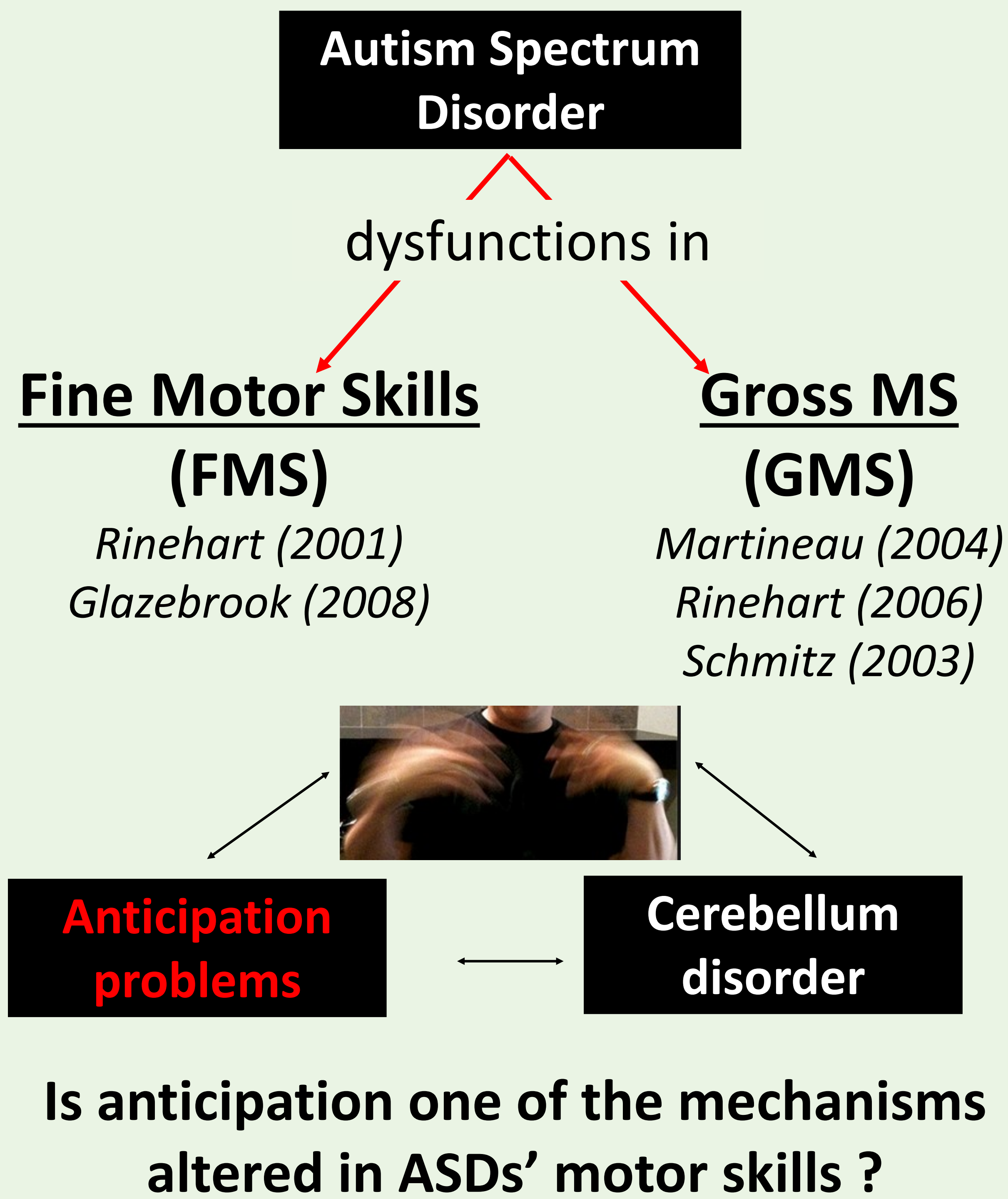
Distributed under a Creative Commons Attribution - NonCommercial - ShareAlike 4.0 International License

# Motor anticipation is disrupted during fine and gross motor control in ASD children

A. Benchekri<sup>1,2</sup>, L. Fradet<sup>2</sup>, R. Tisserand<sup>1,2</sup>, H. Cottenceau<sup>3</sup>, É. Lemonnier<sup>4</sup>, A. Amestoy<sup>5</sup>, C. Bidet-Ildei<sup>1</sup>

1 : CERCA, Equipe Interactions, CNRS: UMR7295, University of Poitiers, University of Tours, France; 2 : Institut PPRIME, Equipe RoBioSS, CNRS: UPR 3346, University of Poitiers, France; 3 : Centre Hospitalier de La Rochelle, 17000, France; 4 : Centre Ressource Autisme, Hôpital Le Cluzeau, Centre Hospitalier Universitaire Limoges, France; 5 : INCIA, CNRS: UMR 5287, Université de Bordeaux, France

## Introduction



## Method

**30 ASD** (8,8 years; 11 girls) | **30 TD** (8,6 years; 17 girls)

**Tasks**

**FMS : Writing Anticipation (WA)**  
2 digrams :  
10 ll + 10 ln  
Kandel & Perret (2015)

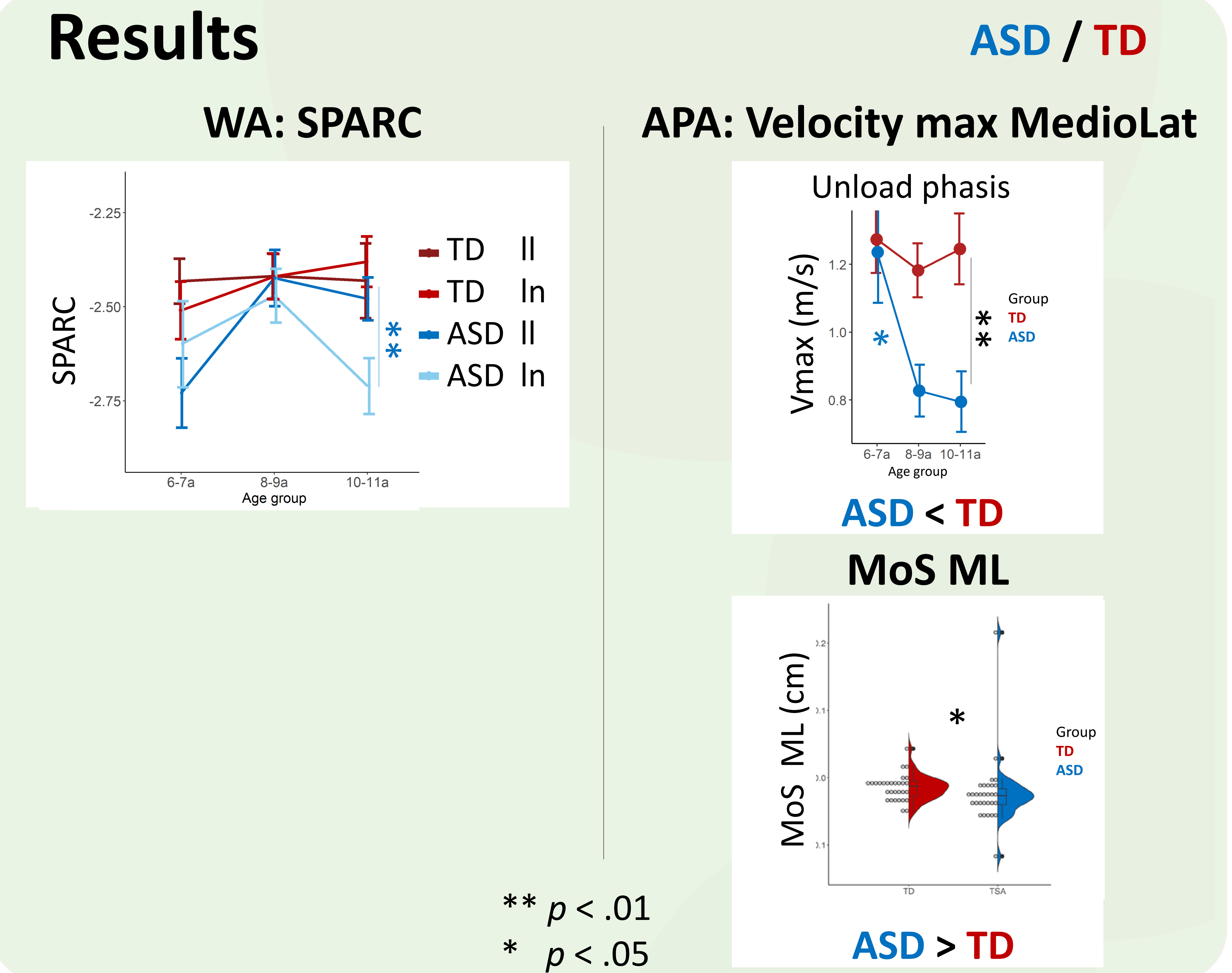
**GMS : gait initiation, Anticipatory Postural Adjustments (APA)**  
3D motion-capture (Vicon)  
2 force plates

**MoS : Margin of Stability (MoS = XcoMp - CoP) at Foot-Off (FO)**  
Hof et al. (2008)

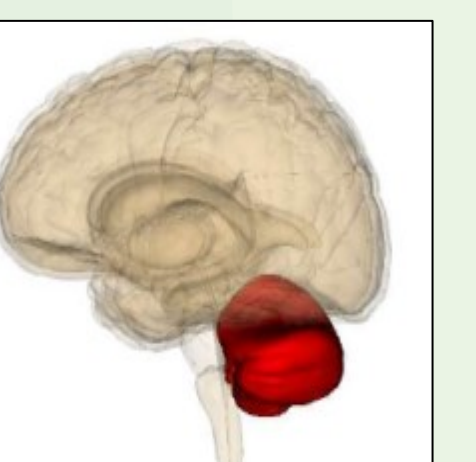
Fluidity 1<sup>st</sup> L : SPARC (Balasubramanian et al., 2012)

FMS + GMS: duration, velocity, length for the different task phases  
Stats: ANOVA (FMS) ; Mann-Withney (GMS)

## Results



- **WA** : ASD children can anticipate the difficulty of the 2<sup>nd</sup> digram, but they produce less smooth gesture than TD children.
- **APA** : greater distance between the Centre of foot Pressure and the Centre of Mass = ASD children encountered greater instability at foot-off.
- ➔ **Anticipatory adjustments in FMS and GMS are atypical in ASD children.**



Since the cerebellum interferes with the execution of anticipated motor programs (Mosconi, 2015), might it be at the origin of the deficient anticipated control?