



**HAL**  
open science

## Heat-related mortality in Europe during the summer of 2022

Joan Ballester, Marcos Quijal-Zamorano, Raúl Fernando Méndez Turrubiates, Ferran Pegenaute, François R Herrmann, Jean Marie Robine, Xavier Basagaña, Cathryn Tonne, Josep M Antó, Hicham Achebak

► **To cite this version:**

Joan Ballester, Marcos Quijal-Zamorano, Raúl Fernando Méndez Turrubiates, Ferran Pegenaute, François R Herrmann, et al.. Heat-related mortality in Europe during the summer of 2022. *Nature Medicine*, 2023, 29 (7), pp.1857-1866. 10.1038/s41591-023-02419-z . hal-04582509

**HAL Id: hal-04582509**

**<https://hal.science/hal-04582509v1>**

Submitted on 22 May 2024

**HAL** is a multi-disciplinary open access archive for the deposit and dissemination of scientific research documents, whether they are published or not. The documents may come from teaching and research institutions in France or abroad, or from public or private research centers.

L'archive ouverte pluridisciplinaire **HAL**, est destinée au dépôt et à la diffusion de documents scientifiques de niveau recherche, publiés ou non, émanant des établissements d'enseignement et de recherche français ou étrangers, des laboratoires publics ou privés.



Distributed under a Creative Commons Attribution 4.0 International License






# Heat-related mortality in Europe during the summer of 2022

Received: 5 January 2023

Accepted: 24 May 2023

Published online: 10 July 2023

 Check for updates

Joan Ballester <sup>1</sup>✉, Marcos Quijal-Zamorano <sup>1,2</sup>,  
Raúl Fernando Méndez Turrubiates<sup>1</sup>, Ferran Pegenaute <sup>1</sup>,  
François R. Herrmann<sup>3,4</sup>, Jean Marie Robine <sup>5,6,7</sup>, Xavier Basagaña <sup>1,2,8</sup>,  
Cathryn Tonne<sup>1,2,8</sup>, Josep M. Antó<sup>1,2,8</sup> & Hicham Achebak<sup>1,9</sup>

Over 70,000 excess deaths occurred in Europe during the summer of 2003. The resulting societal awareness led to the design and implementation of adaptation strategies to protect at-risk populations. We aimed to quantify heat-related mortality burden during the summer of 2022, the hottest season on record in Europe. We analyzed the Eurostat mortality database, which includes 45,184,044 counts of death from 823 contiguous regions in 35 European countries, representing the whole population of over 543 million people. We estimated 61,672 (95% confidence interval (CI) = 37,643–86,807) heat-related deaths in Europe between 30 May and 4 September 2022. Italy (18,010 deaths; 95% CI = 13,793–22,225), Spain (11,324; 95% CI = 7,908–14,880) and Germany (8,173; 95% CI = 5,374–11,018) had the highest summer heat-related mortality numbers, while Italy (295 deaths per million, 95% CI = 226–364), Greece (280, 95% CI = 201–355), Spain (237, 95% CI = 166–312) and Portugal (211, 95% CI = 162–255) had the highest heat-related mortality rates. Relative to population, we estimated 56% more heat-related deaths in women than men, with higher rates in men aged 0–64 (+41%) and 65–79 (+14%) years, and in women aged 80+ years (+27%). Our results call for a reevaluation and strengthening of existing heat surveillance platforms, prevention plans and long-term adaptation strategies.

Anthropogenic emissions of greenhouse gases have led to a detectable rise in global temperatures, which is associated with an increase in the frequency and intensity of heat waves and hot summers<sup>1,2</sup>. Globally, the last 8 years have been the warmest on record, and 2022 was the fifth warmest year<sup>3</sup>. In this context, Europe emerges as a major climatic hotspot<sup>4,5</sup>, given that warming since preindustrial levels is almost 1 °C higher than the corresponding global increase, and higher than in any other continent<sup>6</sup>. Moreover, climate change projections for the continent indicate that temperatures, and their health impacts, will rise at an accelerated rate unless strong mitigation and adaptation actions are put in place<sup>7,8</sup>.

Exposure to heat poses a major threat to high-risk populations in Europe and worldwide by substantially contributing to increased morbidity and mortality<sup>9,10</sup>. Heat waves are the extreme weather events with the highest impact in terms of attributable counts of death<sup>11</sup>. Heat-related mortality has been a major concern for the past two decades in Europe, especially after the 71,449 excess deaths registered during the months of June, July, August and September of 2003 (ref. 12). The resulting societal awareness of the short-term health effects of heat led to the design and implementation of heat prevention plans and other adaptation strategies to protect at-risk populations

<sup>1</sup>ISGlobal, Barcelona, Spain. <sup>2</sup>Universitat Pompeu Fabra, Barcelona, Spain. <sup>3</sup>Medical School of the University of Geneva, Geneva, Switzerland. <sup>4</sup>Division of Geriatrics, Department of Rehabilitation and Geriatrics, Geneva University Hospitals, Thônex, Switzerland. <sup>5</sup>Molecular Mechanisms in Neurodegenerative Dementia, University of Montpellier, Montpellier, France. <sup>6</sup>École Pratique des Hautes Études, Institut National de la Santé et de la Recherche Médicale, Montpellier, France. <sup>7</sup>PSL Research University, Paris, France. <sup>8</sup>CIBER Epidemiología y Salud Pública, Barcelona, Spain. <sup>9</sup>Institut National de la Santé et de la Recherche Médicale, France Cohortes, Paris, France. ✉ e-mail: [joan.ballester@isglobal.org](mailto:joan.ballester@isglobal.org)

across the continent<sup>13,14</sup>, that is, older adults with preexisting cardiovascular and respiratory diseases<sup>15–17</sup>, women<sup>18,19</sup> and socially isolated<sup>20,21</sup> or socioeconomically disadvantaged<sup>19,22</sup> individuals. Although there is some evidence that heat prevention plans, including preparedness and response strategies, intervention actions and heat-health early warning systems, can reduce the health burden of ambient temperatures, the evidence of their effectiveness is still limited<sup>23</sup>.

The summer of 2022 was the hottest season on record in Europe, characterized by an intense series of heat waves, which led to extremes in terms of temperature, drought and fire activity<sup>24,25</sup>. The record-breaking temperatures during the summer of 2022 were monitored by existing surveillance systems, activating an array of national and regional heat prevention and adaptation plans. The European Statistical Office, Eurostat, reported unusually high excess mortality rates for the summer of 2022 (ref. 26), but so far the heat-related mortality burden has not been quantified across the European continent. The aim of this study was to use epidemiological models to estimate the sex- and age-specific mortality burden associated with the record-breaking temperatures registered during the 14-week period between 30 May and 4 September 2022 (weeks 22–35). Moreover, we compared this mortality burden within the broader context of the summer of 2003 and the accelerated warming observed in the continent during the last decade (2013–2022).

## Results

### Association between temperature and mortality

The cumulative temperature–mortality association in Europe shows a monotonically increasing risk of death for temperatures above and below the minimum mortality temperature (Fig. 1a,b; associations by sex and age groups available in Extended Data Fig. 1a–d). This optimum temperature was around 17–19 °C, with small differences according to sex (18.32 °C for women and 18.55 °C for men), but generally warmer values for older adults (17.39, 18.33 and 18.56 °C for the age groups 0–64, 65–79 and 80+ years, respectively). The slopes of the relative risk (RR) association for temperatures colder and hotter than the optimum temperature also increased with age (Fig. 1b); however, the age risk pattern differed according to sex (Extended Data Fig. 1b–d). On the one hand, the slope for colder temperatures was similar in women and men, except in the age group 0–64 years, in which the risk was higher in men. On the other hand, the slope for hotter temperatures was steeper in men aged 0–64 years and in women aged 65–79 and 80+ years. The overall spatial distribution of the RR at the temperature 95th centile emphasizes the latitudinal differences in heat-related mortality risk (Fig. 1c). Thus, the highest risks of heat-related mortality were observed in countries near the Mediterranean Sea in all sex and age groups, with generally higher values for older adults (Fig. 1d) and women (Fig. 1e,f).

### Temperatures and heat-related mortality numbers

Observed European mean temperatures uninterruptedly exceeded the baseline climatological values of the 1991–2020 period in all of the weeks during summer 2022 (Fig. 2a). European weekly temperature anomalies in 2022 ranged between +0.78 and +2.33 °C in June (weeks 22–26), between +0.18 and +3.56 °C in July (weeks 26–30), and between +0.91 and +2.67 °C in August (weeks 31–35). Although several subcontinental warmer-than-average weeks were recorded during the summer (Extended Data Figs. 2–6), the most intense, pan-European heat wave was observed during week 29 (between 18 and 24 July); this week alone was estimated to be associated with 11,637 (95% confidence interval (CI) = 7,639–15,970) heat-related deaths (Fig. 2b), particularly in Central and Southern Europe (Extended Data Fig. 4c,d). The largest temperature anomalies coincided with the peak of the mean annual cycle of temperatures, that is, from mid-July to mid-August (Fig. 2a). The joint effect of the annual cycle and the anomalies magnified the mortality numbers and was associated with 38,881 (95% CI = 25,051–53,699)

heat-related deaths between 11 July and 14 August (Fig. 2b). Heat-related mortality during this 5-week period accounted for nearly two-thirds of the overall summer (61,672; 95% CI = 37,643–86,807; Table 1) and annual (62,862; 95% CI = 37,935–88,780; Supplementary Table 1) heat-related mortality numbers. Italy (18,010; 95% CI = 13,793–22,225), Spain (11,324; 95% CI = 7,908–14,880), Germany (8,173; 95% CI = 5,374–11,018), France (4,807; 95% CI = 1,739–8,123), the United Kingdom (3,469; 95% CI = 370–6,676) and Greece (3,092; 95% CI = 2,217–3,915) were the countries with the highest summer heat-related deaths (Table 1).

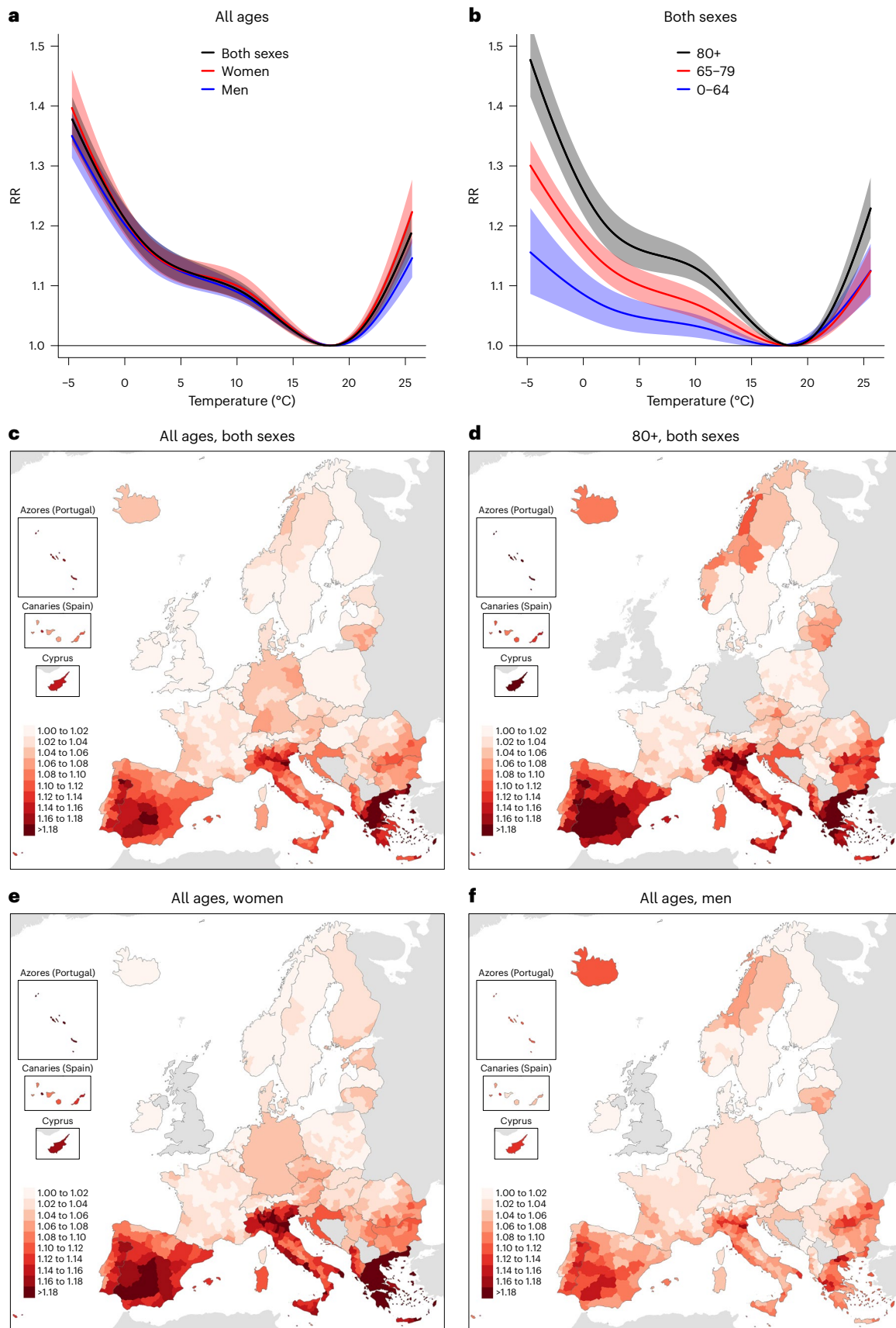
We estimated 63% more heat-related deaths in women (35,406; 95% CI = 21,576–46,634) than in men (21,667; 95% CI = 14,684–27,998) during the summer of 2022 (Table 1 and Supplementary Table 2). The death toll steeply increased with age, with 4,822 (95% CI = 1,130–8,158), 9,226 (95% CI = 665–17,382) and 36,848 (95% CI = 27,591–45,509) heat-related deaths in the age groups 0–64, 65–79 and 80+ years, respectively (Table 2). Italy, Spain, Germany and France had the highest female and male heat-related mortality numbers (Table 1). Italy had the highest number of heat-related deaths among the age groups 65–79 and 80+ years, but France had the highest number of heat-related deaths among people aged 0–64 years (Table 2). Despite differences in the magnitude of overall summer mortality numbers among different sex and age groups, the weekly changes in heat-related deaths were generally the same in all of them (Fig. 2b,c; weekly changes according to sex and age groups are available in Extended Data Fig. 1e–h). The differences according to sex largely varied with age, with higher heat-related deaths in men aged 0–64 years (+43%), but in women aged 65–79 (+6%) and 80+ (+121%) years (Supplementary Table 2).

### Temperatures and heat-related mortality rates

Recorded summer mean temperatures exceeded the baseline climatological values in all European countries with the only exception being Iceland (–0.43 °C; Fig. 3a). The warmest summer temperature anomalies were mainly registered in Southwestern Europe, with the highest national values in France (+2.43 °C), Switzerland (+2.30 °C), Italy (+2.28 °C), Hungary (+2.13 °C) and Spain (+2.11 °C). The highest summer heat-related mortality rates were found in countries near the Mediterranean Sea, that is, Italy (295 deaths per million, 95% CI = 226–364), Greece (280, 95% CI = 201–355), Spain (237, 95% CI = 166–312) and Portugal (211, 95% CI = 162–255; Table 1), as well as in specific regions in Bulgaria, Romania, Croatia and Southern France (Fig. 3b). Overall, we estimated 114 (95% CI = 69–160) heat-related deaths per million in Europe during the summer, with 145 (95% CI = 89–192) female and 93 (95% CI = 63–120) male deaths per million (Table 1). The heat-related mortality rate also steeply increased with age, with 16 (95% CI = 4–27), 160 (95% CI = 12–302) and 1,684 (95% CI = 1,261–2,080) deaths per million in the age groups 0–64, 65–79 and 80+ years, respectively (Table 2). The differences according to sex largely varied with age, with higher heat-related mortality rates in men aged 0–64 (+41%) and 65–79 (+14%) years, and in women aged 80+ years (+27%) and for all age groups combined (+56%; Supplementary Table 2). These age-dependent sex differences were found in most countries with, for example, higher heat-related mortality rates in men than in women for the age group 65–79 years (Fig. 3c,d), but higher in women than in men for people aged 80+ years (Fig. 3e,f).

### Climate change and the summer of 2022

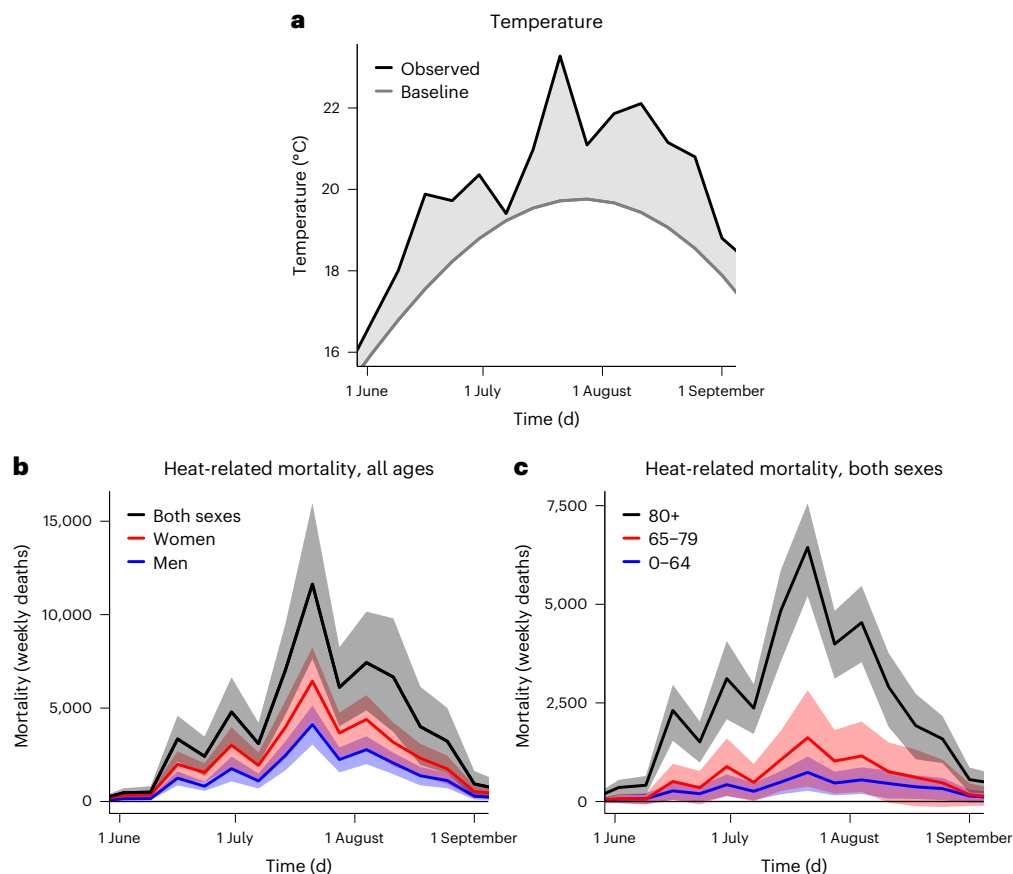
On average over the 35 European countries analyzed here, the summer of 2022 was the warmest season on record (20.30 °C =  $\mu$  + 2.51  $\sigma$ ), which exceeded both the summer of 2003 (20.20 °C =  $\mu$  + 2.36  $\sigma$ ) and the threshold of 2.5 s.d. ( $\sigma$  = 0.67 °C) over the mean ( $\mu$  = 18.62 °C) of the distribution of summer mean temperatures during the 1991–2020 period. The summer of 2003 was an exceptionally warm season within a period of relatively constant global and continental temperatures, commonly referred to as the global warming hiatus of 1998–2012 (ref. 27) (Fig. 4a). During the last decade (2013–2022), however, summer



**Fig. 1** Temperature-related risk of death during 2015–2019. **a, b**, Cumulative relative risk of death (unitless) in Europe for the overall population (black), women (red) and men (blue) (**a**) and people aged 0–64 (blue), 65–79 (red) and

80+ (black) years (**b**), together with their 95% CIs (shadings). **c–f**, Regional relative risk of death (unitless) at the temperature 95th centile for the overall population (**c**), people aged 80+ years (**d**), women (**e**) and men (**f**).





**Fig. 2 | Weekly temperature and heat-related mortality numbers in Europe during the summer of 2022.** **a**, Weekly baseline (gray line) and observed (black line) temperature (°C) averaged over Europe. Temperature anomalies are defined as the difference between observed and baseline temperatures (gray shading). Baseline temperatures were computed as the mean annual cycle of observed temperatures in the reference period 1991–2020. **b,c**, Weekly heat-related

mortality (weekly deaths) aggregated over Europe for the overall population (black), women (red) and men (blue) (**b**) and people aged 0–64 (blue), 65–79 (red) and 80+ (black) years (**c**), together with their 95% CIs (shadings). The numbers for women and men in **b** do not include the United Kingdom; values for the age groups in **c** do not include Germany, Ireland and the United Kingdom.

mean temperatures in the analyzed European countries sped up at an approximately constant rate of  $+0.142$  °C per year, compared with the modest rate of  $+0.028$  °C per year in 1991–2012 (the slopes in Fig. 4a). In that regard, although summer mean temperatures in 2022 followed the trend observed in the last decade (Fig. 4a), this was associated with an increase in 25,561 summer heat-related deaths compared to 2015–2021 (Fig. 4b). In this regard, we estimated that the warming observed since 2015 was associated with 18,547 additional summer heat-related deaths for every  $+1$  °C increase in temperature (the slope in Fig. 4b), or in relative terms, 35.3 additional summer heat-related deaths per million for every  $+1$  °C increase in temperature. Moreover, in the absence of adaptation to future summer warming, and by forward extrapolating the linear fittings in Fig. 4a,b, we would expect a heat-related mortality burden of 68,116 deaths on average every summer by the year 2030, 94,363 deaths by 2040 and 120,610 deaths by 2050.

### Sensitivity analyses

We performed sensitivity analyses by modifying the modeling choices (Methods). In the main results, we calibrated the epidemiological models with temperature and mortality data from January 2015 to December 2019 to avoid any eventual interfering effect of the coronavirus disease 2019 pandemic. However, sensitivity analyses showed that estimates of the RRs and heat-related mortality during the summer (68,476 deaths; 95% CI = 44,884–90,803) and year (70,997; 95% CI = 46,612–94,777) of 2022 were only slightly higher when the pandemic period was included

in the calibration of the epidemiological models, that is, 2015–2022 (Supplementary Table 1 and Extended Data Fig. 7).

The statistical analysis was done in two steps (Methods). In the first stage, we used quasi-Poisson regression models to calculate the location-specific temperature–lag–mortality relationship in each European region. We tested different configurations of the exposure–response function, being estimates of the heat-related mortality not sensitive to these choices (Supplementary Table 1). In the main results, we used the model configuration that better fitted the data based on the Akaike information criterion. In the second stage, we used a multivariate, multilevel meta-regression analysis to pool the location-specific coefficients obtained in the first step, including (1) country random effects and (2) the location-specific temperature average, (3) the temperature interquartile range and (4) the percentage of people aged 80+ years as meta-predictors (Extended Data Fig. 8). We tested these meta-predictors and we found that they explained a significant fraction of the spatial heterogeneity (Supplementary Table 3).

### Discussion

This European-wide study quantified the mortality associated with record-breaking temperatures during the summer of 2022, currently the hottest season on record in Europe, and analyzed it within the broader context of the summer of 2003 and the accelerated warming observed in the continent during the last decade (2013–2022). Epidemiological models were applied to a mortality database representing the whole

**Table 1 | National sex-specific heat-related mortality numbers and rates during the summer of 2022**

Country	Attributable number (deaths)			Attributable rate (deaths per million)		
	Overall	Women	Men	Overall	Women	Men
Albania	352 (97, 586)	186 (39, 336)	80 (4, 155)	117 (32, 195)	125 (26, 225)	53 (2, 102)
Austria	419 (109, 741)	274 (-55, 570)	199 (66, 332)	47 (12, 83)	60 (-12, 125)	45 (15, 75)
Belgium	434 (-26, 911)	264 (-68, 558)	159 (-26, 341)	38 (-2, 79)	45 (-12, 95)	28 (-5, 60)
Bulgaria	1,277 (549, 2,072)	678 (138, 1,145)	556 (239, 867)	176 (75, 285)	182 (37, 307)	157 (68, 245)
Switzerland	302 (48, 557)	255 (54, 433)	93 (20, 161)	35 (6, 64)	58 (12, 99)	22 (5, 37)
Cyprus	101 (24, 173)	56 (6, 110)	47 (17, 75)	113 (27, 193)	123 (13, 240)	107 (38, 171)
Czechia	279 (-25, 607)	290 (37, 520)	38 (-45, 122)	26 (-2, 56)	53 (7, 95)	7 (-8, 23)
Germany	8,173 (5,374, 11,018)	3,925 (1,656, 6,403)	2,771 (1,333, 4,149)	98 (64, 132)	93 (39, 152)	68 (32, 101)
Denmark	252 (42, 468)	119 (-51, 274)	59 (-19, 136)	43 (7, 80)	41 (-17, 93)	20 (-7, 47)
Estonia	167 (26, 296)	113 (7, 214)	39 (-5, 83)	123 (19, 217)	157 (9, 297)	61 (-8, 129)
Greece	3,092 (2,217, 3,915)	2,076 (1,551, 2,586)	822 (448, 1,186)	280 (201, 355)	367 (274, 457)	153 (83, 220)
Spain	11,324 (7,908, 14,880)	7,190 (4,426, 9,478)	4,250 (2,825, 5,633)	237 (166, 312)	295 (182, 389)	181 (121, 241)
Finland	225 (-94, 562)	278 (-15, 551)	30 (-14, 71)	40 (-17, 100)	98 (-5, 194)	11 (-5, 26)
France	4,807 (1,739, 8,123)	2,424 (-473, 4,964)	2,584 (1,237, 3,889)	73 (26, 124)	71 (-14, 146)	81 (39, 122)
Croatia	731 (346, 1,069)	469 (198, 708)	212 (72, 344)	172 (82, 252)	213 (90, 322)	104 (35, 168)
Hungary	513 (-126, 1,207)	529 (74, 915)	129 (-131, 396)	51 (-13, 121)	101 (14, 175)	27 (-27, 83)
Ireland	26 (-168, 199)	38 (-90, 174)	0 (0, 0)	5 (-34, 40)	15 (-35, 69)	0 (0, 0)
Iceland	0 (0, 0)	0 (-2, 3)	0 (0, 0)	0 (0, 0)	2 (-12, 17)	0 (0, 0)
Italy	18,010 (13,793, 22,225)	11,917 (8,078, 15,148)	6,268 (4,619, 7,817)	295 (226, 364)	379 (257, 482)	211 (156, 264)
Liechtenstein	1 (-2, 3)	1 (-1, 3)	0 (0, 0)	19 (-42, 73)	41 (-56, 143)	0 (-10, 11)
Lithuania	381 (158, 618)	157 (-13, 309)	190 (94, 282)	128 (53, 208)	99 (-8, 194)	138 (68, 204)
Luxembourg	44 (-1, 91)	25 (-1, 51)	7 (-7, 20)	69 (-2, 144)	79 (-3, 162)	22 (-21, 62)
Latvia	105 (-33, 242)	42 (-69, 144)	46 (-20, 111)	52 (-16, 120)	39 (-63, 133)	49 (-21, 120)
Montenegro	50 (-12, 108)	31 (-17, 83)	7 (-8, 21)	81 (-19, 173)	100 (-55, 262)	22 (-26, 69)
Malta	76 (-2, 150)	41 (-11, 90)	43 (12, 72)	147 (-5, 290)	166 (-43, 363)	160 (43, 270)
Netherlands	469 (-8, 981)	326 (-117, 727)	155 (-49, 357)	27 (0, 56)	37 (-13, 82)	18 (-6, 41)
Norway	30 (-32, 86)	8 (-43, 58)	28 (-2, 57)	5 (-6, 16)	3 (-16, 22)	10 (-1, 21)
Poland	763 (-283, 1860)	559 (-417, 1446)	259 (-73, 576)	20 (-7, 48)	28 (-21, 73)	14 (-4, 31)
Portugal	2,212 (1,703, 2,679)	1,227 (761, 1,618)	828 (592, 1,064)	211 (162, 255)	222 (138, 293)	166 (119, 214)
Romania	2,455 (1,201, 3,797)	1,130 (56, 2,145)	1,323 (779, 1,837)	122 (60, 189)	110 (5, 209)	135 (79, 187)
Serbia	574 (226, 955)	465 (244, 651)	253 (89, 415)	81 (32, 135)	129 (68, 180)	74 (26, 121)
Sweden	40 (-104, 200)	46 (-100, 181)	9 (-30, 50)	4 (-10, 19)	9 (-19, 35)	2 (-6, 10)
Slovenia	154 (-24, 307)	100 (-4, 209)	58 (-4, 119)	73 (-12, 146)	96 (-4, 200)	55 (-3, 112)
Slovakia	365 (62, 676)	164 (-5, 314)	128 (-12, 267)	66 (11, 123)	58 (-2, 111)	48 (-4, 99)
United Kingdom	3,469 (370, 6,676)	Not available	Not available	52 (6, 100)	Not available	Not available
<b>Europe</b>	<b>61,672 (37,643, 86,807)</b>	<b>35,406 (21,576, 46,634)</b>	<b>21,667 (14,684, 27,998)</b>	<b>114 (69, 160)</b>	<b>145 (89, 192)</b>	<b>93 (63, 120)</b>

Summer refers to the 14-week period between 30 May and 4 September 2022 (weeks 22–35). Values in parentheses represent the 95% CIs. The numbers and rates for women and men do not include the United Kingdom.

population of over 543 million people from 823 contiguous regions in 35 European countries. Overall, we estimated 62,862 heat-related deaths in Europe in 2022; 61,672 of those deaths occurred between 30 May and 4 September. Italy, Spain, Germany, France, the United Kingdom and Greece had the highest summer heat-related mortality numbers. In relative terms, the largest summer heat-related mortality rates were found in countries near the Mediterranean Sea, which included Italy, Greece, Spain and Portugal. The results showed that there was a large increase in heat-related mortality during June–August 2022, approaching the record-breaking excess mortality of June–September 2003.

However, the comparison with 2003 needs to be interpreted with caution, given the large methodological differences in our study compared to previous estimates<sup>12</sup>. First, the estimate of the death toll during the summer of 2003 from Robine et al.<sup>12</sup> was based on excess mortality numbers, which quantify the deviation of the mortality from the seasonally varying expected mortality from a reference period. As heat-related mortality occurs every summer, the estimate of excess deaths may exclude part of the heat-related mortality burden. On the other hand, this study used epidemiological models to quantify deaths specifically attributable to heat; therefore, our estimate is not

**Table 2 | National age-specific heat-related mortality numbers and rates during the summer of 2022**

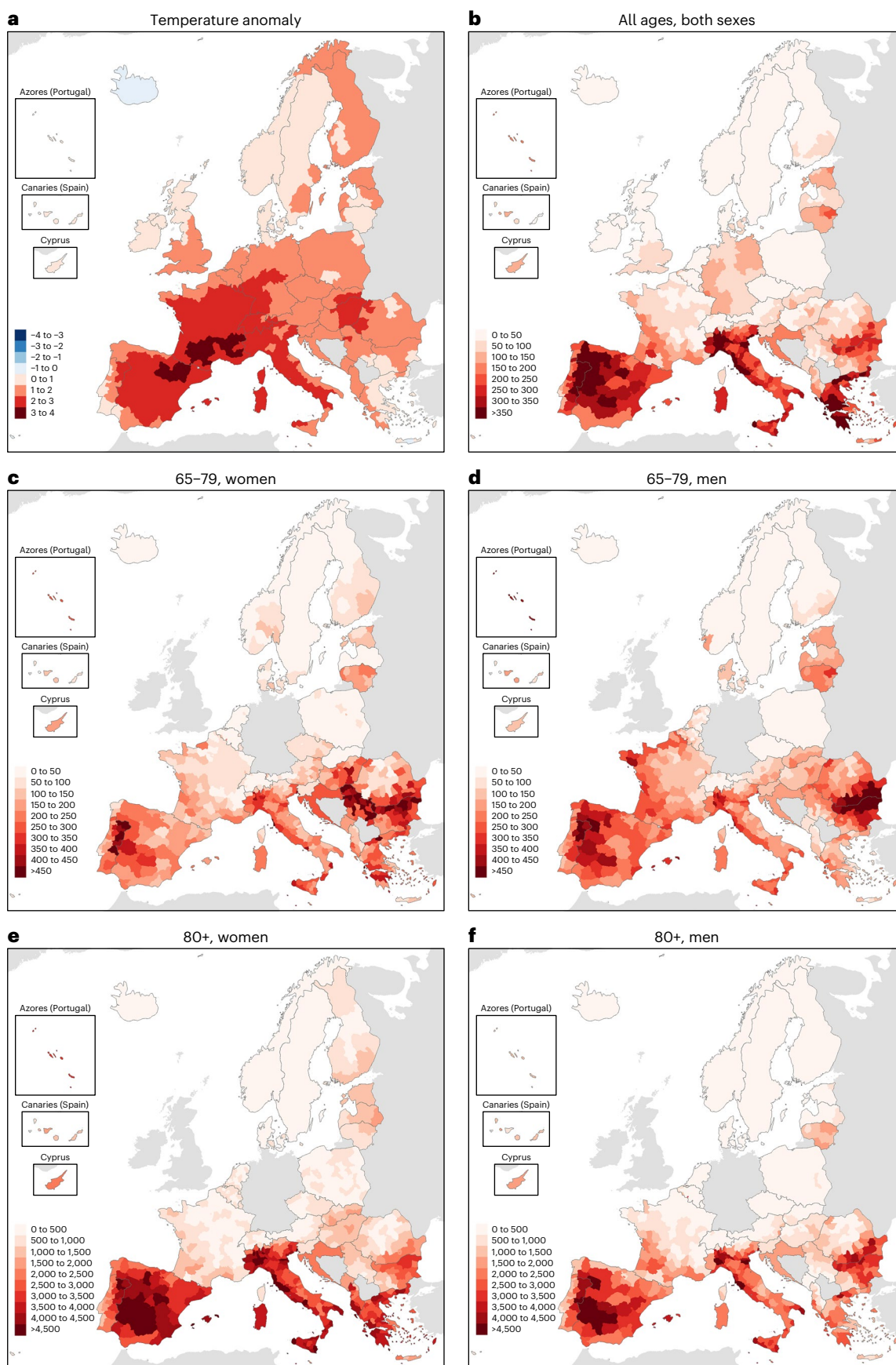
Country	Attributable number (deaths)			Attributable rate (deaths per million)		
	0–64	65–79	80+	0–64	65–79	80+
Albania	24 (–18, 67)	48 (–19, 115)	165 (75, 246)	9 (–7, 26)	138 (–54, 330)	2,845 (1,283, 4,226)
Austria	52 (–27, 124)	160 (18, 303)	213 (–32, 472)	7 (–4, 17)	130 (15, 246)	423 (–63, 939)
Belgium	67 (–54, 171)	56 (–229, 324)	357 (113, 599)	7 (–6, 18)	34 (–141, 199)	554 (176, 931)
Bulgaria	108 (10, 197)	445 (135, 746)	737 (255, 1,237)	20 (2, 37)	384 (116, 644)	2,271 (787, 3,812)
Switzerland	34 (–68, 125)	67 (–126, 255)	230 (–71, 542)	5 (–10, 18)	56 (–106, 214)	487 (–151, 1,149)
Cyprus	9 (–6, 23)	15 (–8, 37)	72 (16, 119)	12 (–8, 31)	135 (–67, 325)	2,018 (459, 3,334)
Czechia	14 (–25, 49)	41 (–61, 144)	236 (12, 465)	2 (–3, 6)	24 (–35, 84)	522 (27, 1,030)
Germany	Not available	Not available	Not available	Not available	Not available	Not available
Denmark	43 (2, 83)	70 (–74, 215)	77 (–64, 218)	9 (0, 18)	78 (–82, 237)	265 (–219, 747)
Estonia	28 (16, 37)	32 (–10, 73)	71 (3, 138)	26 (15, 35)	167 (–52, 379)	885 (33, 1,719)
Greece	158 (6, 305)	321 (–10, 649)	2,245 (1437, 3054)	20 (1, 38)	198 (–6, 401)	2,977 (1,905, 4,050)
Spain	796 (189, 1,357)	1,476 (357, 2,544)	9,436 (5,855, 12,563)	21 (5, 36)	222 (54, 383)	3,273 (2,031, 4,357)
Finland	18 (–14, 49)	67 (–22, 156)	107 (–124, 337)	4 (–3, 11)	71 (–24, 164)	325 (–375, 1,019)
France	1,007 (171, 1,747)	1,673 (–87, 3,443)	2,832 (4, 5,395)	19 (3, 34)	169 (–9, 348)	706 (1, 1,346)
Croatia	30 (–43, 94)	160 (26, 289)	467 (189, 712)	10 (–14, 31)	244 (40, 440)	2,209 (892, 3,364)
Hungary	17 (–36, 69)	255 (–48, 547)	449 (15, 891)	2 (–5, 9)	165 (–31, 354)	1,009 (35, 2,000)
Ireland	Not available	Not available	Not available	Not available	Not available	Not available
Iceland	2 (–14, 17)	1 (–11, 11)	0 (0, 0)	6 (–44, 53)	14 (–264, 255)	0 (0, 0)
Italy	965 (236, 1,670)	2,326 (1,026, 3,601)	14,821 (12,004, 17,483)	21 (5, 37)	244 (108, 377)	3,290 (2,664, 3,880)
Liechtenstein	0 (0, 0)	0 (–1, 1)	0 (–1, 1)	2 (–8, 11)	38 (–111, 186)	147 (–577, 792)
Lithuania	77 (27, 123)	80 (4, 154)	211 (61, 367)	34 (12, 55)	199 (9, 383)	1,334 (383, 2,325)
Luxembourg	7 (–1, 15)	6 (–7, 19)	17 (–12, 42)	13 (–2, 28)	87 (–99, 265)	657 (–467, 1,636)
Latvia	11 (–13, 30)	9 (–36, 53)	129 (30, 221)	7 (–9, 20)	34 (–128, 190)	1,135 (261, 1,949)
Montenegro	5 (–9, 17)	12 (–9, 33)	25 (–10, 55)	9 (–17, 32)	146 (–120, 412)	1,248 (–496, 2,752)
Malta	14 (0, 30)	15 (–12, 39)	43 (–11, 84)	34 (–1, 70)	189 (–151, 498)	1,895 (–473, 3,740)
Netherlands	143 (1, 286)	129 (–303, 582)	306 (161, 440)	10 (0, 20)	48 (–113, 218)	359 (188, 516)
Norway	84 (–153, 270)	43 (–62, 146)	0 (–7, 8)	19 (–34, 61)	57 (–83, 196)	1 (–28, 33)
Poland	275 (–362, 844)	70 (–188, 328)	525 (205, 829)	9 (–12, 28)	13 (–35, 61)	310 (121, 489)
Portugal	192 (76, 303)	379 (129, 617)	1,464 (937, 1,947)	24 (10, 38)	219 (74, 357)	2,036 (1,302, 2,706)
Romania	457 (131, 757)	780 (67, 1,466)	1,186 (318, 2,108)	30 (9, 49)	273 (23, 513)	1,400 (375, 2,489)
Serbia	112 (15, 206)	300 (94, 506)	174 (–36, 394)	21 (3, 38)	264 (83, 445)	560 (–115, 1,269)
Sweden	22 (–27, 64)	64 (–118, 252)	16 (–76, 114)	3 (–3, 8)	41 (–76, 161)	29 (–136, 204)
Slovenia	9 (–26, 39)	34 (–18, 85)	94 (–11, 186)	5 (–15, 23)	105 (–54, 260)	798 (–91, 1,580)
Slovakia	42 (–3, 83)	90 (–99, 275)	145 (–36, 337)	9 (–1, 19)	119 (–130, 362)	790 (–195, 1,834)
United Kingdom	Not available	Not available	Not available	Not available	Not available	Not available
<b>Europe</b>	<b>4,822 (1,130, 8,158)</b>	<b>9,226 (665, 17,382)</b>	<b>36,848 (27,591, 45,509)</b>	<b>16 (4, 27)</b>	<b>160 (12, 302)</b>	<b>1,684 (1,261, 2,080)</b>

Summer refers to the 14-week period between 30 May and 4 September 2022 (weeks 22–35). The values in parentheses represent the 95% CIs. The numbers and rates do not include Germany, Ireland and the United Kingdom.

expected to include mortality cases in which heat was not a contributor. Furthermore, we used weekly temperature and mortality data in our epidemiological models, which is expected to underestimate the day-to-day variability of the time series and possibly their lagged short-term associations. This is especially the case for heat, given that the risk of death is acute and generally does not last for more than 5 days<sup>7,28,29</sup>. As a reference, a previous study<sup>30</sup> applied similar epidemiological models to daily temperature and mortality data for Spain only, and found that the summer heat-related mortality burden was 6% higher (that is, 12,054 deaths) than the one reported here for the same

country (that is, 11,324 deaths). Finally, the excess mortality estimates during the summer of 2003 from Robine et al.<sup>12</sup> were based on data from only 16 European countries, representing a population of nearly 400 million people<sup>31,32</sup>. As a reference, when restricted to the same regions and countries, our heat-related mortality estimates for the summer of 2022 (that is, 61,672 deaths) were 15% lower (that is, 52,121 deaths).

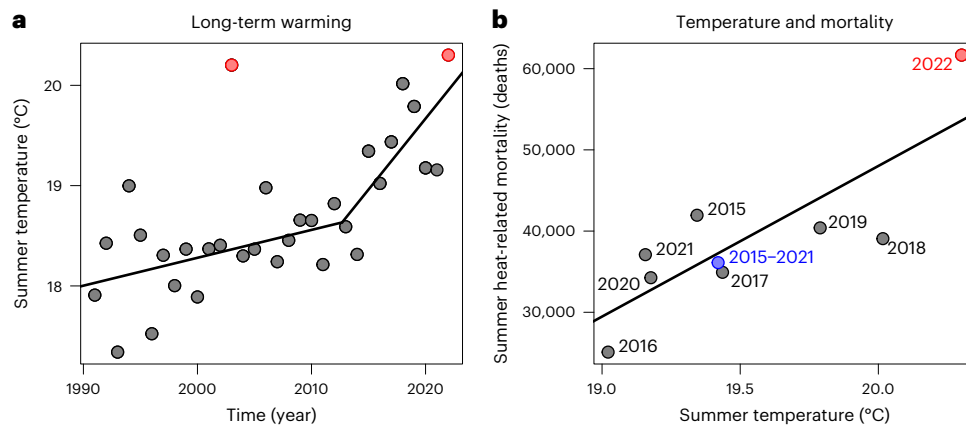
Furthermore, the warming levels and trends observed immediately before the summers of 2003 and 2022 were also very different. The summer of 2003 was an exceptionally rare event, even if the observed long-term anthropogenic warming was taken into account<sup>33</sup>.



**Fig. 3 | Regional temperature anomaly and heat-related mortality rate during the summer of 2022. a**, Regional temperature anomaly (°C) averaged over the summer. **b–f**, Regional heat-related mortality rate (summer deaths per million) aggregated over the summer for the whole population (**b**), women aged

65–79 years (**c**), men aged 65–79 years (**d**), women aged 80+ years (**e**) and men aged 80+ years (**f**). Summer refers to the 14-week period between 30 May and 4 September 2022 (weeks 22–35).





**Fig. 4 | The summer of 2022 within the context of rising temperatures in Europe.** **a**, Year-to-year time series of summer mean temperatures (°C) averaged over the analyzed European countries. The straight lines depict the linear fitting for the 1991–2012 (excluding the year 2003) and 2013–2022 periods.

**b**, Relationship between summer mean temperature (°C) and summer heat-related mortality (summer deaths) in the analyzed European countries. The straight line shows the linear fitting for the 2015–2022 period.

The exceptional nature of the event highlighted the shortcomings (or the inexistence) of heat prevention plans during the time, the fragility of health systems in dealing with climate-related health emergencies and the lack of awareness of the associated risks and impacts by the media and general population<sup>13,21</sup>. Instead, the temperatures in the summer of 2022 were not exceptional, in the sense that this could have been anticipated by forward extrapolation of the accelerated warming pathway observed during the last decade (2013–2022). Yet, this was associated with an increase of over 25,500 summer heat-related deaths compared to the 2015–2021 period. The rate of warming observed during the last decade emphasizes the urgent need for reevaluation and strengthening of adaptation strategies. Indeed, in the absence of further adaptation to the summer heat, and by forward extrapolating the linear fittings in Fig. 4a,b, we would expect a rapid increase to unprecedented summer heat-related mortality numbers in the coming years. However, the exceptional nature of 2003, with summer mean temperatures more than +2 °C warmer than the values expected from previous summers (Fig. 4a), leads to the speculation of what would have been the mortality burden during the summer of 2022 if a similar temperature anomaly had occurred. Although future studies are needed to answer this question, the possibility that a severe thermal anomaly with regard to the current warmer climate could produce an impact on mortality greater than the one observed in 2022 needs to be carefully considered in the next summers.

Although previous studies showed that the risk of death due to heat has decreased in several European countries<sup>13,18,34</sup>, our results suggest that past efforts toward an effective early adaptation response to observed warming, including preparedness and response strategies, intervention actions and heat-health early warning systems, had largely been insufficient to prevent the large magnitude of the heat-related mortality estimated for the summer of 2022. Despite the experience accumulated since 2003 (ref. 23), and the excess mortality estimates captured by EuroMOMO and Eurostat in several European countries, the magnitude of the overall death toll received relatively little attention. Despite the fact that many European countries activated heat prevention plans during the summer of 2022, the estimation of over 60,000 heat-related deaths suggests that prevention plans were only partially effective.

The burden of heat-related mortality was higher among women. Relative to population, we estimated 56% more heat-related deaths in women than in men, with higher rates in men aged 0–64 and 65–79 years, and in women aged 80+ years. Physiological differences and sociocultural factors have been suggested as potential explanations

for these gaps<sup>35–37</sup>, but we also found that differences in age structure between men and women partly explained the higher risk for women at advanced ages and for men at younger ages. Prevention plans should also target a reduction of sex, age and other drivers of inequalities in the risk of heat-related mortality.

This study included an analysis of heat-related risks and mortality numbers according to sex and age groups, showing generally higher values in women and, as expected, steeply increased with age. We showed that age composition was a driver of between-sex and between-country differences<sup>38–40</sup>; this could closely relate to policy questions around how to efficiently protect the population from summer heat. Exposure to extreme heat, especially during summers such as in 2022, may differentially exacerbate preexisting or chronic risks among women and men in each age group. This raises questions about whether the observed sex differences in heat-related mortality risks and numbers are driven by differences or disparities, and what this would mean for policy, which is beyond the scope of the study and its methodological design. The combination of sex and age, socio-economic level, education and underlying health status could have contributed to the magnitude and distribution of heat-related mortality in our study<sup>41,42</sup>. Unfortunately, with the current data availability in Europe, the analysis of the societal determinants of vulnerability and adaptation will require a larger effort<sup>43</sup>. Improving data availability for more granular pan-European studies to monitor the health and inequity dimensions of climate change should also be considered as part of the societal response to the climate crisis, as already emphasized by Robine et al. 15 years ago<sup>12</sup>.

Temperatures during the summer of 2022 were warmer than average in most of Europe, but the largest summer heat-related mortality rates were found in countries near the Mediterranean Sea. We showed that this latitudinal pattern closely resembled the spatial distribution of RRs, rather than the distribution of temperature anomalies (Figs. 1c and 3a,b). This mismatch was already observed during the summer of 2003, with the warmest summer mean temperature anomalies in Central Europe, mainly in France and Switzerland<sup>44</sup>, but the largest excess mortality in Spain (+13.7%), France (+11.8%) and Italy (+11.6%)<sup>12</sup>. Our study therefore emphasized the vulnerability of populations in Southern Europe<sup>45</sup>. As a major climate change hotspot<sup>4,5</sup>, these populations will be increasingly exposed to extreme summer conditions<sup>2</sup> and would therefore be expected to experience increasingly higher heat-related mortality in the future<sup>7,8</sup>. Addressing geographical inequalities in current and future vulnerability to heat will also need to be prioritized by national and European governments and agencies.

This study has some limitations worth acknowledging. First, we used weekly temperature and mortality data in the epidemiological models, which is expected to underestimate the heat-related mortality of the summer of 2022. The scientific question of characterizing the biases of epidemiological models applied to weekly temperature and mortality data was beyond the scope of the present work and it will be addressed in a follow-up study. Second, data according to sex and age groups were not available in a reduced number of countries, that is, the United Kingdom, Ireland and Germany, which emphasized the urgent need to coordinate national agencies for statistics to create protocols integrating and homogenizing health data sources and improving open-access data for research, translation and policymaking. In our opinion, this should be a priority in the agenda of European governments, both from inside and outside the European Union, given that health data are managed at the country level and only integrated as open-access data in exceptional cases. Finally, the study analyzed records of all-cause mortality because cause-specific data were not available. This limitation is important because some of the differences in heat-related mortality risks and numbers between sex and age groups could be better interpreted within the framework of an in-depth analysis of the causes of death.

Due to global warming, temperatures in Europe are rising at a faster rate than the global average<sup>6</sup>. Taking into account the magnitude of heat-related mortality on the continent, our results call for a reevaluation and strengthening of heat surveillance platforms, prevention plans and long-term adaptation strategies. The high heat-related mortality that Europe experienced during the summer of 2022 calls for national governments and relevant agencies in the European Union and continental levels to increase the ambition and effectiveness of heat prevention and adaptation plans with urgency.

## Online content

Any methods, additional references, Nature Portfolio reporting summaries, source data, extended data, supplementary information, acknowledgements, peer review information; details of author contributions and competing interests; and statements of data and code availability are available at <https://doi.org/10.1038/s41591-023-02419-z>.

## References

- Perkins-Kirkpatrick, S. E. & Lewis, S. C. Increasing trends in regional heatwaves. *Nat. Commun.* **11**, 3357 (2020).
- IPCC. *Climate Change 2021: The Physical Science Basis* (eds Masson-Delmotte, V. et al.) (Cambridge Univ. Press, 2021).
- European State of the Climate 2022. *Copernicus* <https://climate.copernicus.eu/esotc/2022> (2023).
- Giorgi, F. Climate change hot-spots. *Geophys. Res. Lett.* **33**, L08707 (2006).
- van Daalen, K. R. et al. The 2022 Europe report of the Lancet Countdown on health and climate change: towards a climate resilient future. *Lancet Public Health* **7**, e942–e965 (2022).
- Climate Indicators: Temperature. *Copernicus* <https://climate.copernicus.eu/climate-indicators/temperature> (2022).
- Martínez-Solanas, È. et al. Projections of temperature attributable mortality in Europe: a timeseries analysis in 147 contiguous regions. *Lancet Planet. Health* **5**, e446–e454 (2021).
- Quijal-Zamorano, M. et al. Seasonality reversal of temperature attributable mortality projections due to present-day unobserved extreme heat in Europe. *Lancet Planet. Health* **5**, e573–e575 (2021).
- Heat and Health in the WHO European Region: Updated Evidence for Effective Prevention* (WHO, 2021); <https://apps.who.int/iris/handle/10665/339462>
- Ebi, K. L. et al. Hot weather and heat extremes: health risks. *Lancet* **398**, 698–708 (2021).
- Climate Change, Impacts and Vulnerability in Europe 2012*. EEA Report No 12/2012 (EEA, 2012).
- Robine, J.-M. et al. Death toll exceeded 70,000 in Europe during the summer of 2003. *C. R. Biol.* **331**, 171–178 (2008).
- Fouillet, A. et al. Has the impact of heat waves on mortality changed in France since the European heat wave of summer 2003? A study of the 2006 heat wave. *Int. J. Epidemiol.* **37**, 309–317 (2008).
- Casanueva, A. et al. Overview of existing heat-health warning systems in Europe. *Int. J. Environ. Res. Public Health* **16**, 2657 (2019).
- D'Amato, G., Cecchi, L., D'Amato, M. & Annesi-Maesano, I. Climate change and respiratory diseases. *Eur. Respir. Rev.* **23**, 161–169 (2014).
- Liu, C., Yavar, Z. & Sun, Q. Cardiovascular response to thermoregulatory challenges. *Am. J. Physiol. Heart Circ. Physiol.* **309**, H1793–H1812 (2015).
- Khraishah, H. et al. Climate change and cardiovascular disease: implications for global health. *Nat. Rev. Cardiol.* **19**, 798–812 (2022).
- Achebak, H., Devolder, D. & Ballester, J. Heat-related mortality trends under recent climate warming in Spain: a 36-year observational study. *PLoS Med.* **15**, e1002617 (2018).
- Saucy, A. et al. The role of extreme temperature in cause-specific acute cardiovascular mortality in Switzerland: a case-crossover study. *Sci. Total Environ.* **790**, 147958 (2021).
- Semenza, J. C. et al. Heat-related deaths during the July 1995 heat wave in Chicago. *N. Engl. J. Med.* **335**, 84–90 (1996).
- Fouillet, A. et al. Excess mortality related to the August 2003 heat wave in France. *Int. Arch. Occup. Environ. Health* **80**, 16–24 (2006).
- Keivabu, R. C. Extreme temperature and mortality by educational attainment in Spain, 2012–2018. *Eur. J. Popul.* **38**, 1145–1182 (2022).
- de'Donato, F. K. et al. Changes in the effect of heat on mortality in the last 20 years in nine European cities. Results from the PHASE project. *Int. J. Environ. Res. Public Health* **12**, 15567–15583 (2015).
- Summer 2022 Europe's Hottest on Record. *Copernicus* <https://climate.copernicus.eu/copernicus-summer-2022-europes-hottest-record> (2022).
- Rodrigues, M. et al. Drivers and implications of the extreme 2022 wildfire season in Southwest Europe. *Sci. Total Environ.* **859**, 160320 (2023).
- Excess Mortality: +12% in August after Peak in July. *Eurostat* <https://ec.europa.eu/eurostat/web/products-eurostat-news/-/ddn-20221014-1> (2022).
- Medhaug, I., Stolpe, M. B., Fischer, E. M. & Knutti, R. Reconciling controversies about the 'global warming hiatus'. *Nature* **545**, 41–47 (2017).
- Achebak, H., Devolder, D. & Ballester, J. Trends in temperature-related age-specific and sex-specific mortality from cardiovascular diseases in Spain: a national time-series analysis. *Lancet Planet. Health* **3**, e297–e306 (2019).
- Achebak, H., Devolder, D., Ingole, V. & Ballester, J. Reversal of the seasonality of temperature-attributable mortality from respiratory diseases in Spain. *Nat. Commun.* **11**, 2457 (2020).
- Tobias, A., Royé, D. & Íñiguez, C. Heat-attributable mortality in the summer of 2022 in Spain. *Epidemiology* **34**, e5–e6 (2023).
- Ballester, J., Rodó, X., Robine, J.-M. & Herrmann, F. R. European seasonal mortality and influenza incidence due to winter temperature variability. *Nat. Clim. Change* **6**, 927–930 (2016).
- Ballester, J., Robine, J.-M., Herrmann, F. R. & Rodó, X. Effect of the Great Recession on regional mortality trends in Europe. *Nat. Commun.* **19**, 679 (2019).
- Schär, C. et al. The role of increasing temperature variability in European summer heatwaves. *Nature* **427**, 332–336 (2004).

34. Vicedo-Cabrera, A. M. et al. A multi-country analysis on potential adaptive mechanisms to cold and heat in a changing climate. *Environ. Int.* **111**, 239–246 (2018).
35. Kovats, R. S. & Hajat, S. Heat stress and public health: a critical review. *Annu. Rev. Public Health* **29**, 41–55 (2008).
36. Arbutnott, K., Hajat, S., Heaviside, C. & Vardoulakis, S. Changes in population susceptibility to heat and cold over time: assessing adaptation to climate change. *Environ. Health* **15**, 33 (2016).
37. van Steen, Y., Ntarladima, A. M., Grobbee, R., Karssenber, D. & Vaartjes, I. Sex differences in mortality after heat waves: are elderly women at higher risk? *Int. Arch. Occup. Environ. Health* **92**, 37–48 (2019).
38. Rey, G. et al. The impact of major heat waves on all-cause and cause-specific mortality in France from 1971 to 2003. *Int. Arch. Occup. Environ. Health* **80**, 615–626 (2007).
39. Martínez-Solanas, E. et al. Evaluation of the impact of ambient temperatures on occupational injuries in Spain. *Environ. Health Perspect.* **126**, 067002 (2018).
40. de Schrijver, E. et al. Nationwide analysis of the heat- and cold-related mortality trends in Switzerland between 1969 and 2017: the role of population aging. *Environ. Health Perspect.* **130**, 37001 (2022).
41. Gallo, V. et al. Social inequalities and mortality in Europe—results from a large multi-national cohort. *PLoS ONE* **7**, e39013 (2012).
42. Sera, F. et al. How urban characteristics affect vulnerability to heat and cold: a multi-country analysis. *Int. J. Epidemiol.* **48**, 1101–1112 (2019).
43. Signs of Early Adaptation to Climate Change. *EARLY-ADAPT* <https://www.early-adapt.eu/> (2023).
44. Ballester, J., Robine, J. M., Herrmann, F. R. & Rodó, X. Long-term projections and acclimatization scenarios of temperature-related mortality in Europe. *Nat. Commun.* **2**, 358 (2011).
45. Baccini, M. et al. Heat effects on mortality in 15 European cities. *Epidemiology* **19**, 711–719 (2008).

**Publisher's note** Springer Nature remains neutral with regard to jurisdictional claims in published maps and institutional affiliations.

**Open Access** This article is licensed under a Creative Commons Attribution 4.0 International License, which permits use, sharing, adaptation, distribution and reproduction in any medium or format, as long as you give appropriate credit to the original author(s) and the source, provide a link to the Creative Commons license, and indicate if changes were made. The images or other third party material in this article are included in the article's Creative Commons license, unless indicated otherwise in a credit line to the material. If material is not included in the article's Creative Commons license and your intended use is not permitted by statutory regulation or exceeds the permitted use, you will need to obtain permission directly from the copyright holder. To view a copy of this license, visit <http://creativecommons.org/licenses/by/4.0/>.

© The Author(s) 2023, corrected publication 2023

## Methods

### Data sources

We obtained weekly counts of all-cause mortality according to sex and age groups from Eurostat<sup>46</sup>. Missing data were complemented by contacting the corresponding national agencies for statistics. The final dataset included 45,184,044 counts of death (22,000,519 for women and 21,913,050 for men) between January 2015 and November 2022 from 823 contiguous regions representing over 543 million Europeans in 35 countries, namely Albania (12 regions), Austria (35), Belgium (44), Bulgaria (28), Croatia (1), Cyprus (1), Czechia (14), Denmark (11), Estonia (5), Finland (19), France (96), Germany (16), Greece (52), Hungary (20), Iceland (2), Ireland (1), Italy (103), Latvia (6), Liechtenstein (1), Lithuania (10), Luxembourg (1), Malta (1), Montenegro (1), the Netherlands (40), Norway (11), Poland (73), Portugal (25), Romania (42), Serbia (25), Slovakia (8), Slovenia (1), Spain (59), Sweden (21), Switzerland (26), and the United Kingdom (12). On average, each region represented a population of 660,000 Europeans. All-age data according to sex was not available in the United Kingdom and only at the country level in Germany. Data according to sex and age groups was not available for Germany, Ireland and the United Kingdom.

We transformed the hourly gridded 2-m temperature data from the high-resolution ERA5-Land reanalysis<sup>47</sup> into weekly regional averages of daily mean 2-m temperature.

### Statistical analysis

In a nutshell, we used the regional temperature and mortality time series for the period from January 2015 to December 2019 to calibrate the epidemiological models, which were then used to transform the temperature and mortality time series from January 2015 to November 2022 into the weekly and summer heat-related mortality numbers over the years 2015–2022. Epidemiological models were fitted separately for each combination of sex and age groups.

More specifically, the statistical analysis was done in two stages. In the first stage, we used quasi-Poisson regression models, which allow for overdispersed counts of deaths, to calculate the location-specific temperature–lag–mortality relationship in each European region<sup>28,29,48</sup>. The models included (1) an intercept, (2) a natural cubic spline of time with 8 d.f. per year to control for the seasonal and long-term trends, and (3) a cross-basis function to estimate the exposure–lag–response association between weekly temperatures (temp) and mortality counts (mort):

$$\log(E(\text{mort})) = \text{intercept} + \text{ns}(\text{time}, 8 \text{ d.f. per year}) + \text{crossbasis}(\text{temp}; 0, 1, 2, 3 \text{ weeks})$$

The lag–response function of the cross-basis was modeled with integer lag values of 0, 1, 2 and 3 weeks, and the exposure–response function with a natural cubic spline with three internal knots at the 10th, 50th and 90th centiles of the location-specific weekly temperature distribution.

In the second stage, we used a multivariate, multilevel meta-regression analysis<sup>49</sup> to pool the location-specific coefficients obtained in the first stage. The meta-regression included (1) the country random effects, (2) the location-specific temperature average, (3) the temperature interquartile range and (4) the percentage of people aged 80+ years as meta-predictors (Extended Data Fig. 8)<sup>50</sup>. We derived the best linear unbiased predictions of the temperature–mortality relationship in each region from the meta-regression<sup>51</sup> to obtain the location-specific minimum mortality temperature and to transform the regional temperature and mortality time series from January 2015 to November 2022 into the weekly and summer heat-related mortality numbers over the years 2015–2022 (ref. 52). Heat-related mortality was calculated for the weeks with average temperatures above the location-specific minimum mortality temperature<sup>18</sup>. Regional heat-related mortality numbers were aggregated to obtain the national

and European burdens<sup>7,8</sup>. Similarly, we computed 1,000 Monte Carlo simulations of the regional heat-related mortality numbers and separately aggregated the numbers in each simulation to calculate the 95% CIs at the national and continental levels<sup>28,29,50</sup>. We calculated heat-related mortality rates (in deaths per million) by using the yearly regional population estimates from Eurostat<sup>53</sup>.

We defined the temperature anomalies as the difference between observed and baseline temperatures. The baseline temperature was computed as the mean annual cycle of observed temperatures in the reference period 1991–2020, calculated as a linear regression model with temperature as the dependent variable, and (1) an intercept and (2) a natural cubic spline of day of the year with 6 d.f. as independent variables.

### Reporting summary

Further information on research design is available in the Nature Portfolio Reporting Summary linked to this article.

### Data availability

This study is based on publicly available datasets: mortality counts from Eurostat ([https://ec.europa.eu/eurostat/statistics-explained/index.php?title=Weekly\\_death\\_statistics&stable](https://ec.europa.eu/eurostat/statistics-explained/index.php?title=Weekly_death_statistics&stable)); temperature values from the European Centre for Medium-Range Weather Forecasts (<https://cds.climate.copernicus.eu/cdsapp#!/dataset/reanalysis-era5-land?tab=overview>); and population numbers from Eurostat ([https://ec.europa.eu/eurostat/cache/metadata/en/demo\\_r\\_gind3\\_esms.htm](https://ec.europa.eu/eurostat/cache/metadata/en/demo_r_gind3_esms.htm)).

### Code availability

The computer code illustrating the analyses is available at [https://github.com/BallesterJoan/europe\\_summer\\_2022\\_heat](https://github.com/BallesterJoan/europe_summer_2022_heat).

### References

- Weekly Death Statistics. *Eurostat* [https://ec.europa.eu/eurostat/statistics-explained/index.php?title=Weekly\\_death\\_statistics&stable](https://ec.europa.eu/eurostat/statistics-explained/index.php?title=Weekly_death_statistics&stable) (2022).
- ERA5-Land Hourly Data from 1950 to Present. *European Centre for Medium-Range Weather Forecasts* <https://cds.climate.copernicus.eu/cdsapp#!/dataset/reanalysis-era5-land?tab=overview> (2022).
- Gasparrini, A., Armstrong, B. & Kenward, M. G. Distributed lag non-linear models. *Stat. Med.* **29**, 2224–2234 (2010).
- Sera, F., Armstrong, B., Blangiardo, M. & Gasparrini, A. An extended mixed-effects framework for meta-analysis. *Stat. Med.* **38**, 5429–5444 (2019).
- Vicedo-Cabrera, A. M. et al. The burden of heat-related mortality attributable to recent human-induced climate change. *Nat. Clim. Change* **11**, 492–500 (2021).
- Gasparrini, A., Armstrong, B. & Kenward, M. G. Multivariate meta-analysis for non-linear and other multi-parameter associations. *Stat. Med.* **31**, 3821–3839 (2012).
- Gasparrini, A. & Leone, M. Attributable risk from distributed lag models. *BMC Med. Res. Methodol.* **14**, 55 (2014).
- Regional Demographic Statistics. *Eurostat* [https://ec.europa.eu/eurostat/cache/metadata/en/demo\\_r\\_gind3\\_esms.htm](https://ec.europa.eu/eurostat/cache/metadata/en/demo_r_gind3_esms.htm) (2022).

### Acknowledgements

J.B., M.Q.-Z., R.F.M.T. and F.P. gratefully acknowledge funding from the European Union's Horizon 2020 and Horizon Europe research and innovation programs under grant nos. 865564 (European Research Council Consolidator Grant EARLY-ADAPT; <https://www.early-adapt.eu/>), 101069213 (European Research Council Proof-of-Concept HHS-EWS) and 101123382 (European Research Council Proof-of-Concept FORECAST-AIR). J.B., C.T. and J.M.A. acknowledge funding from the European Union's Horizon Europe research and innovation program under grant no. 101057131 (Horizon Europe project CATALYSE; <https://catalysehORIZON.eu/>). J.B. and X.B. acknowledge funding from the Ministry of Research and



Universities of the Government of Catalonia (no. 2021-SGR-01563). J.B. also acknowledges funding from FORMAS, the Swedish Research Council for Sustainable Development (Cross-Cutting Climate Adaptation—Challenges and Measures Grant ADATES), and from the Spanish Ministry of Science and Innovation under grant no. RYC2018-025446-I (program Ramón y Cajal). H.A. acknowledges funding from the European Union's Horizon Europe research and innovation program under grant no. 101065876 (Marie Skłodowska-Curie Actions Postdoctoral Fellowship TEMP-MOMO). ISGlobal authors acknowledge support from grant no. CEX2018-000806-S funded by MCIN/AEI/10.13039/501100011033 and support from the Generalitat de Catalunya through the CERCA Program. The funders had no role in study design, data collection and analysis, decision to publish or preparation of the manuscript.

### Author contributions

J.B. conceived the study. R.F.M.T. and F.P. collected, preprocessed and validated the data. J.B. and H.A. carried out the statistical analyses. J.B. wrote the first draft of the manuscript. M.Q.-Z., F.R.H., J.M.R., X.B., C.T., J.M.A. and H.A. contributed to subsequent versions, and to the interpretation of the data and results. All authors reviewed and approved the final version of the manuscript.

### Competing interests

The authors declare no competing interests.

### Additional information

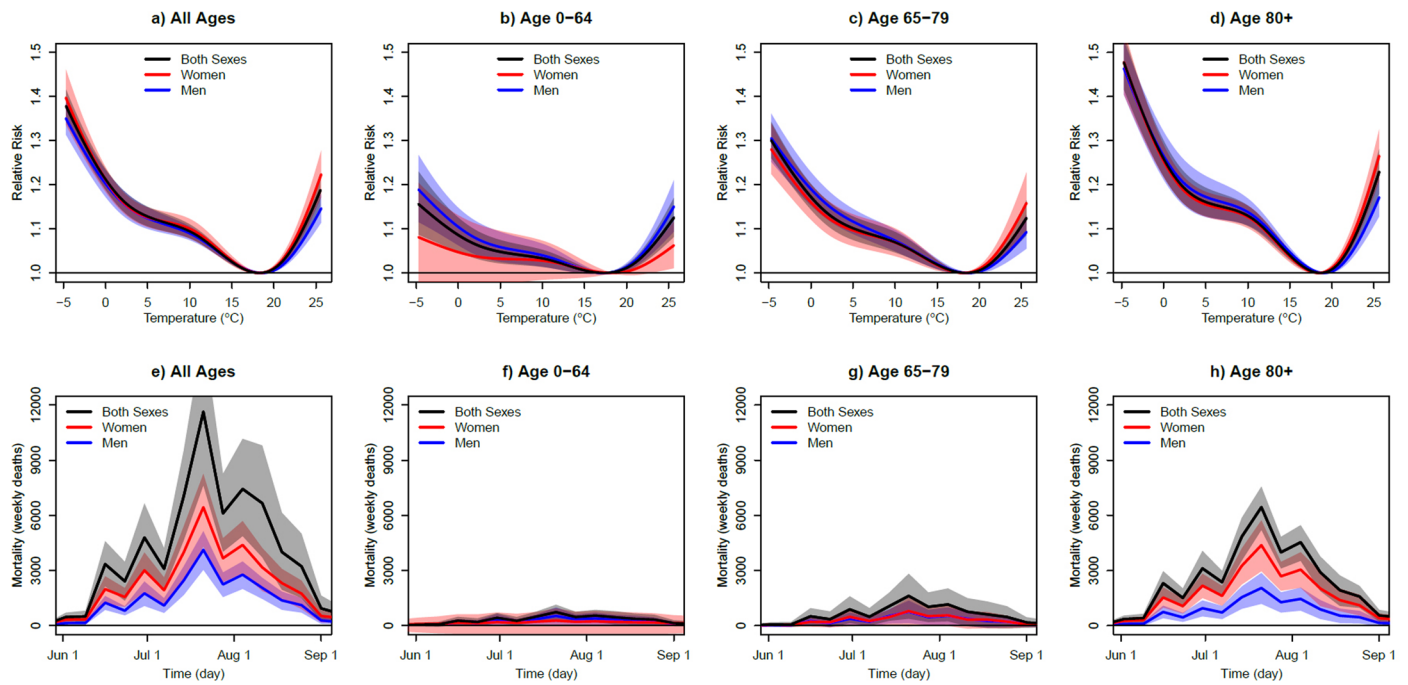
**Extended data** is available for this paper at <https://doi.org/10.1038/s41591-023-02419-z>.

**Supplementary information** The online version contains supplementary material available at <https://doi.org/10.1038/s41591-023-02419-z>.

**Correspondence and requests for materials** should be addressed to Joan Ballester.

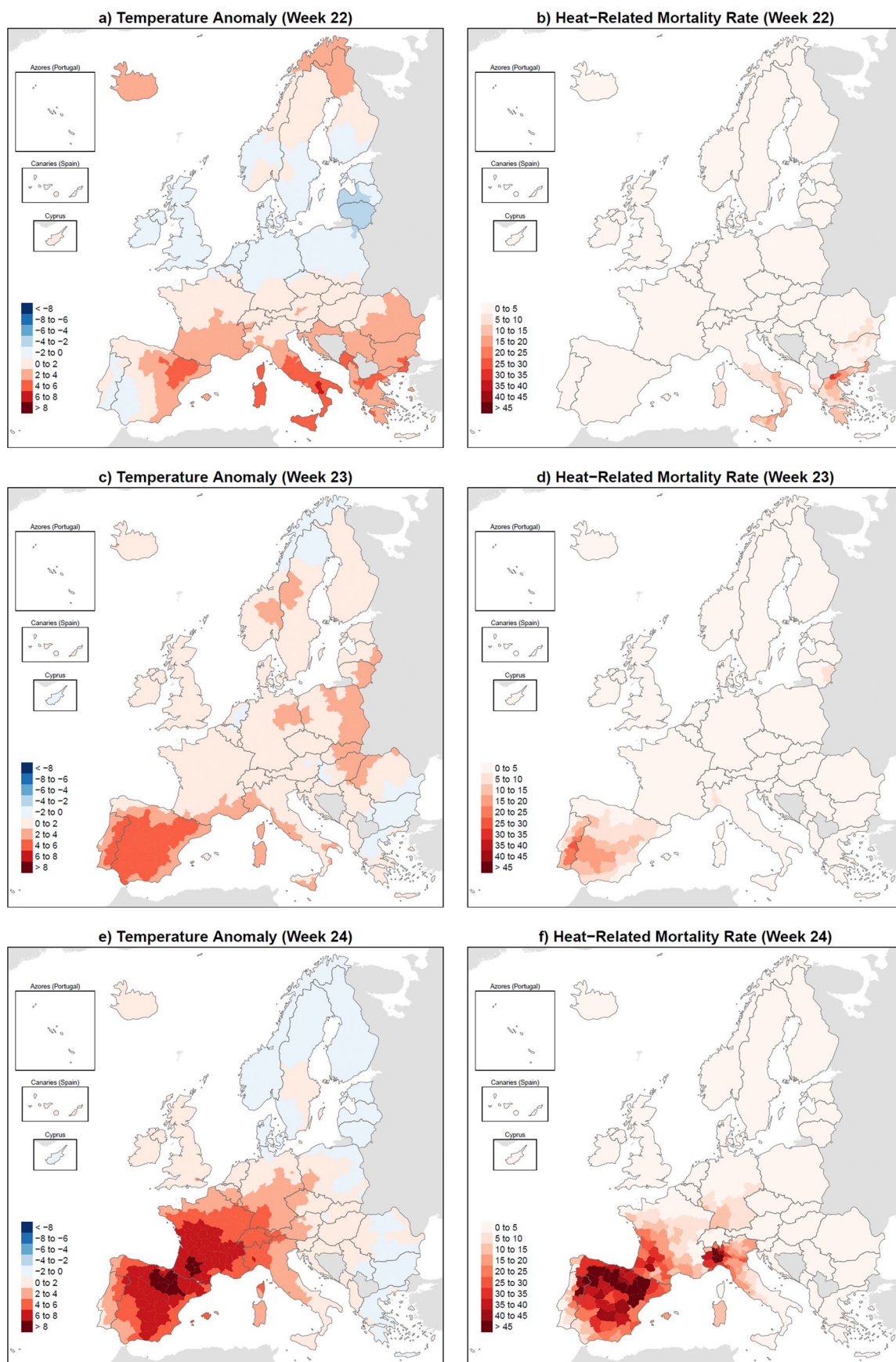
**Peer review information** *Nature Medicine* thanks Pierre Masselot, Josiah Kephart, John Ji and the other, anonymous, reviewer(s) for their contribution to the peer review of this work. Primary Handling Editor: Ming Yang, in collaboration with the *Nature Medicine* team.

**Reprints and permissions information** is available at [www.nature.com/reprints](http://www.nature.com/reprints).

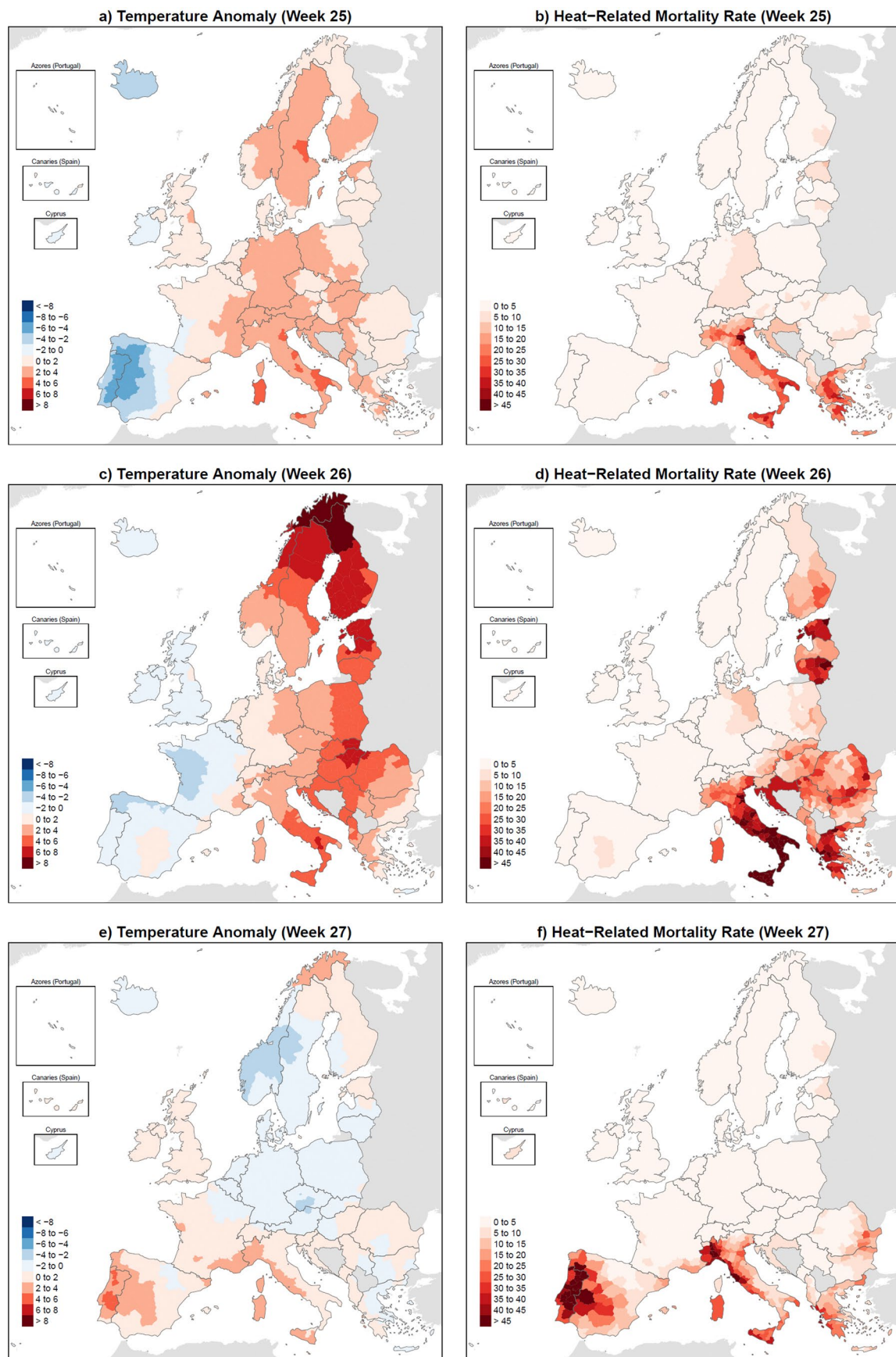


**Extended Data Fig. 1 | European sex- and age-specific temperature-related risk of death and heat-related mortality.** Panels (a-d) depict the cumulative relative risk of death (unitless) in Europe during 2015-2019. Panels (e-h) display the weekly heat-related mortality (weekly deaths) aggregated over Europe

during the summer of 2022. The shadings represent the 95% confidence intervals. All-age data by sex was not available in the United Kingdom (red and blue lines in panels a,e). Data by sex and age groups was not available in the United Kingdom, Ireland and Germany (panels b-d, f-h).

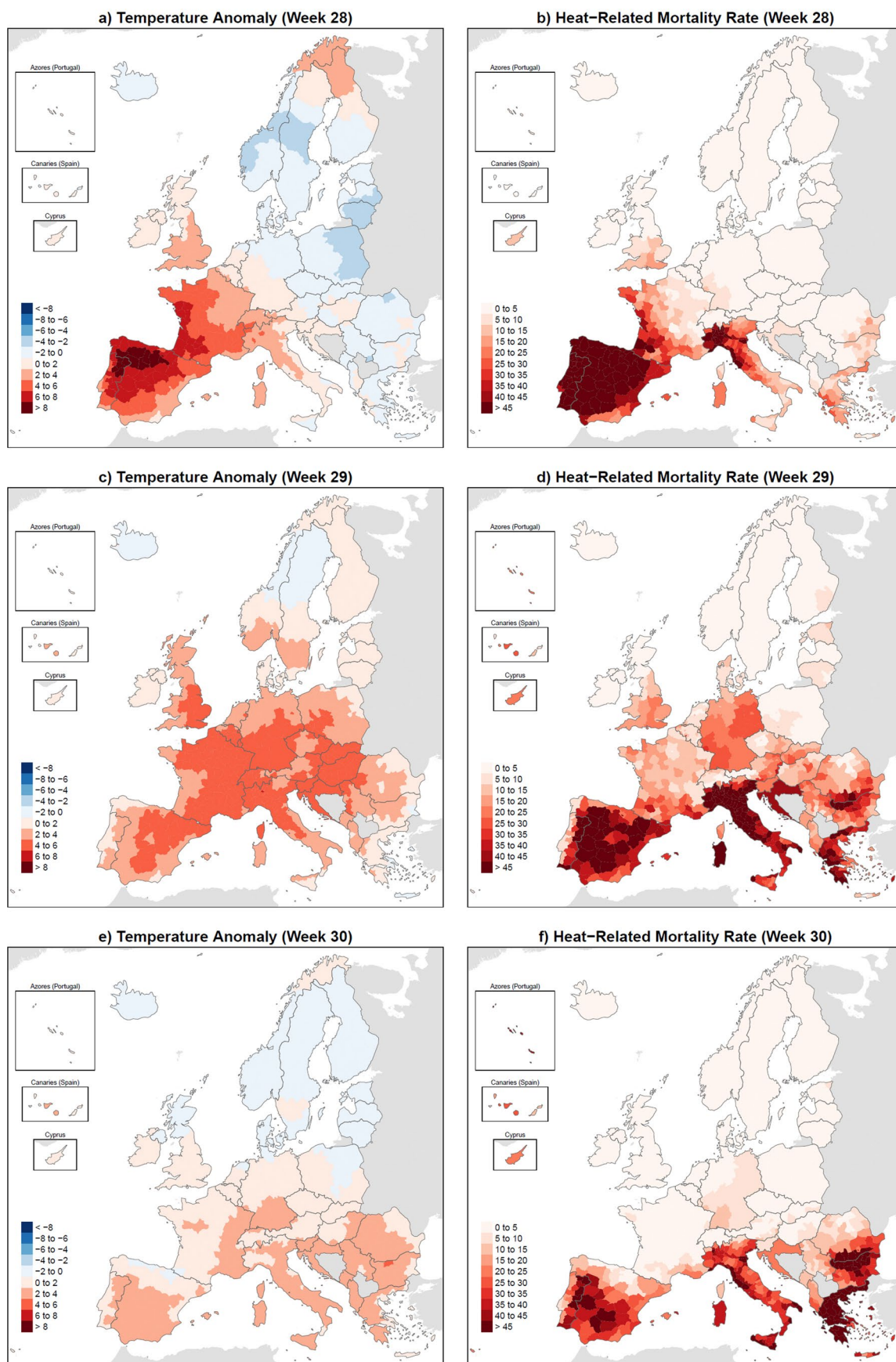


**Extended Data Fig. 2 | Regional temperature anomaly and heat-related mortality rate during weeks 22, 23 and 24.** Regional temperature anomaly (a,c,e; °C) and heat-related mortality rate (b,d,f; weekly deaths per million) during weeks 22 (May 30 – June 5; a,b), 23 (June 6 – June 12; c,d) and 24 (June 13 – June 19; e,f) of the year 2022.

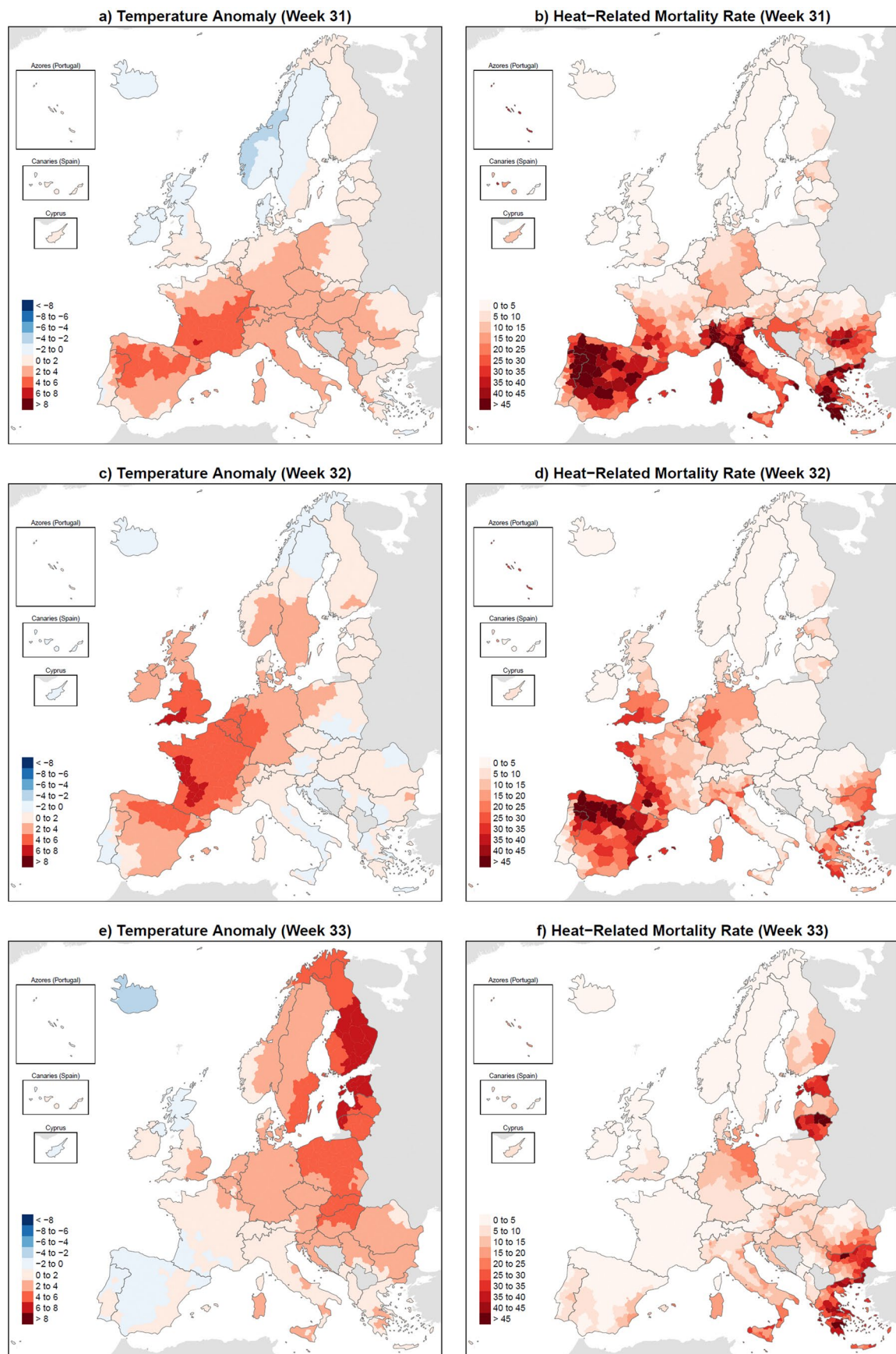


**Extended Data Fig. 3 | Regional temperature anomaly and heat-related mortality rate during weeks 25, 26 and 27.** Regional temperature anomaly (a,c,e; °C) and heat-related mortality rate (b,d,f; weekly deaths per million) during weeks 25 (June 20 – June 26; a,b), 26 (June 27 – July 3; c,d) and 27 (July 4 – July 10; e,f) of the year 2022.



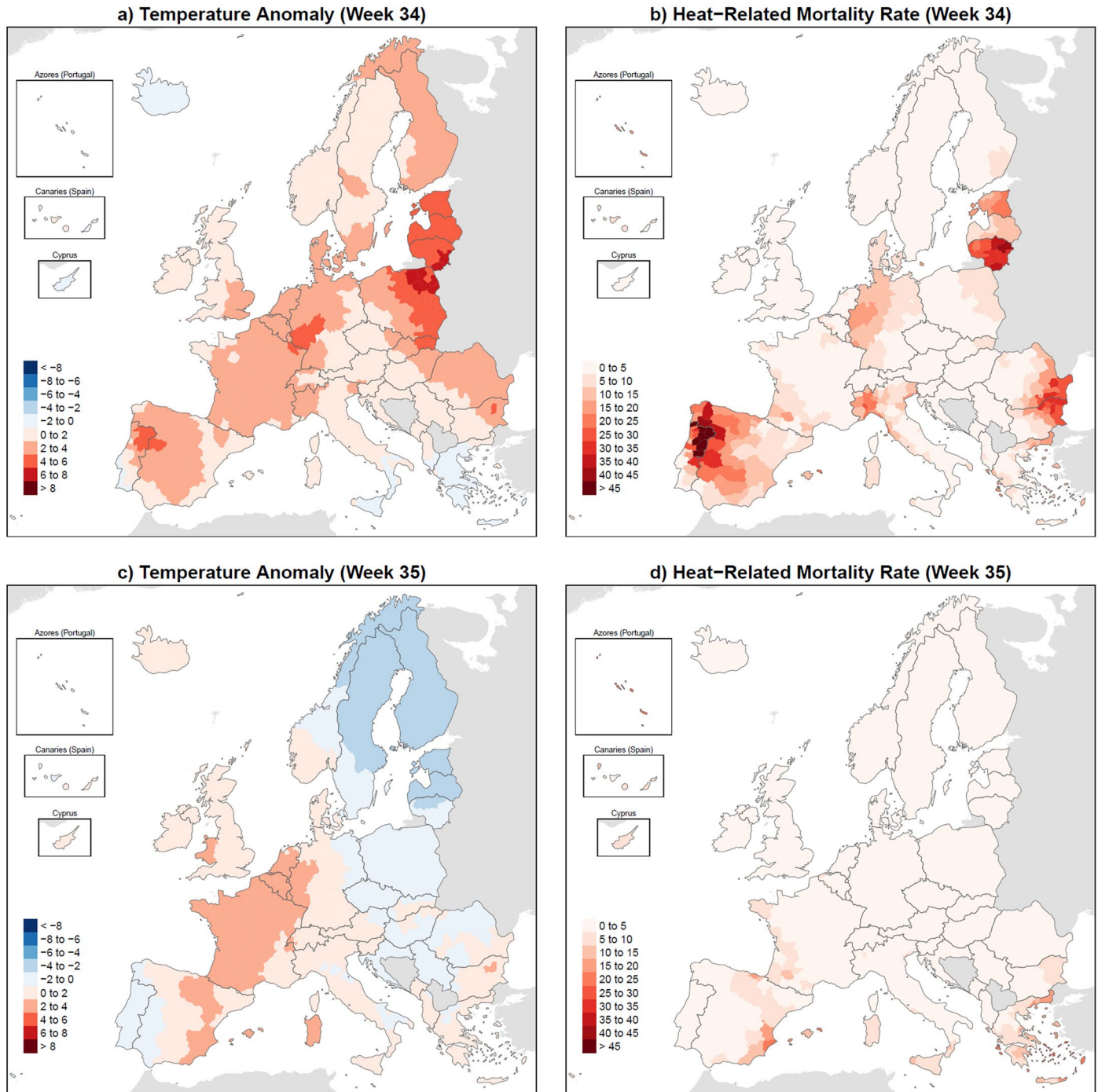


**Extended Data Fig. 4 | Regional temperature anomaly and heat-related mortality rate during weeks 28, 29 and 30.** Regional temperature anomaly (a,c,e; °C) and heat-related mortality rate (b,d,f; weekly deaths per million) during weeks 28 (July 11 – July 17; a,b), 29 (July 18 – July 24; c,d) and 30 (July 25 – July 31; e,f) of the year 2022.

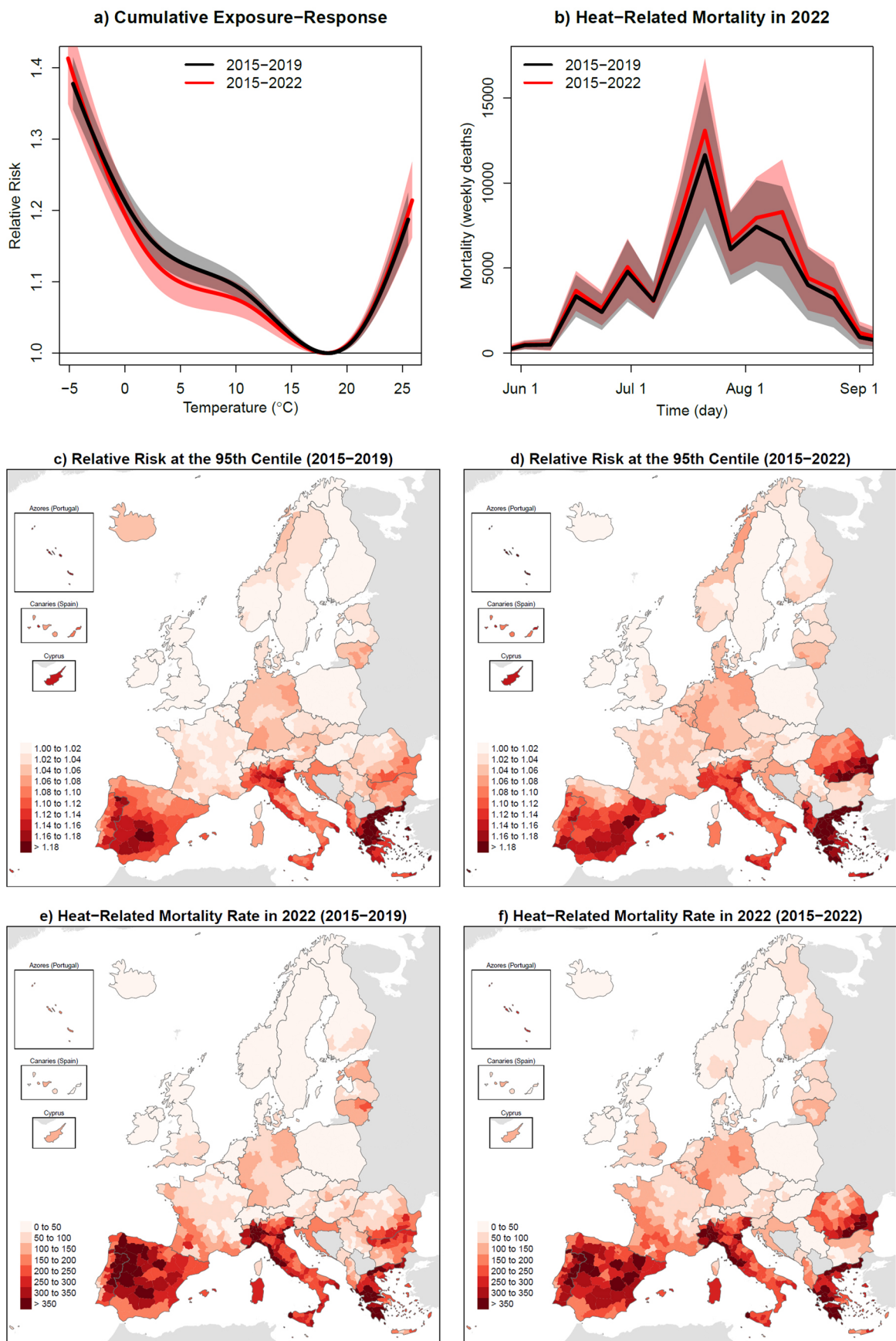


**Extended Data Fig. 5 | Regional temperature anomaly and heat-related mortality rate during weeks 31, 32 and 33.** Regional temperature anomaly (a,c,e; °C) and heat-related mortality rate (b,d,f; weekly deaths per million) during weeks 31 (August 1 – August 7; a,b), 32 (August 8 – August 14; c,d) and 33 (August 15 – August 21; e,f) of the year 2022.





**Extended Data Fig. 6 | Regional temperature anomaly and heat-related mortality rate during weeks 34 and 35.** Regional temperature anomaly (a,c; °C) and heat-related mortality rate (b,d; weekly deaths per million) during weeks 34 (August 22 – August 28; a,b) and 35 (August 29 – September 4; c,d) of the year 2022.

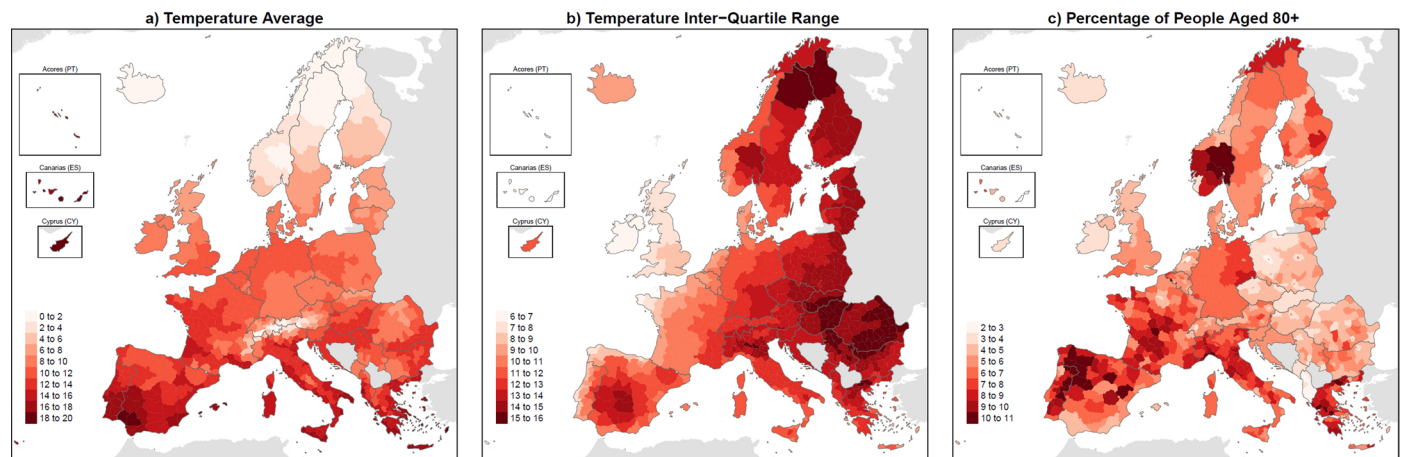


Extended Data Fig. 7 | See next page for caption.



**Extended Data Fig. 7 | Sensitivity to the period of calibration of the epidemiological associations.** Panels (a,b) depict the cumulative relative risk of death (unitless) in Europe (a) and the weekly heat-related mortality (weekly deaths) aggregated over Europe during the summer of 2022 (b), together with their 95% confidence intervals (shadings). Panels (c-f) display the regional relative risk of death (unitless) at temperature 95<sup>th</sup> percentile (c,d) and the

regional heat-related mortality rate (summer deaths per million) aggregated over the summer of 2022 (e,f). Values were obtained from epidemiological models calibrated with data from the periods 2015-2019 (black in a,b; and maps in c,e) and 2015-2022 (red in a,b; and maps in d,f). Summer refers to the 14-week period between May 30<sup>th</sup> and September 4<sup>th</sup> of 2022 (weeks 22-35).



**Extended Data Fig. 8 | Meta-predictors included in the meta-regression.** Maps correspond to the regional temperature average (a, °C), temperature inter-quartile range (b, °C) and percentage of people aged 80+ years (c, %).

## Reporting Summary

Nature Portfolio wishes to improve the reproducibility of the work that we publish. This form provides structure for consistency and transparency in reporting. For further information on Nature Portfolio policies, see our [Editorial Policies](#) and the [Editorial Policy Checklist](#).

### Statistics

For all statistical analyses, confirm that the following items are present in the figure legend, table legend, main text, or Methods section.

- |                                     |   |
|-------------------------------------|---|
| n/a                                 | Confirmed   |
| <input type="checkbox"/>            | <input checked="" type="checkbox"/> The exact sample size ( $n$ ) for each experimental group/condition, given as a discrete number and unit of measurement   |
| <input checked="" type="checkbox"/> | <input type="checkbox"/> A statement on whether measurements were taken from distinct samples or whether the same sample was measured repeatedly  |
| <input checked="" type="checkbox"/> | <input type="checkbox"/> The statistical test(s) used AND whether they are one- or two-sided<br><i>Only common tests should be described solely by name; describe more complex techniques in the Methods section.</i>   |
| <input checked="" type="checkbox"/> | <input type="checkbox"/> A description of all covariates tested   |
| <input checked="" type="checkbox"/> | <input type="checkbox"/> A description of any assumptions or corrections, such as tests of normality and adjustment for multiple comparisons  |
| <input checked="" type="checkbox"/> | <input type="checkbox"/> A full description of the statistical parameters including central tendency (e.g. means) or other basic estimates (e.g. regression coefficient) AND variation (e.g. standard deviation) or associated estimates of uncertainty (e.g. confidence intervals) |
| <input checked="" type="checkbox"/> | <input type="checkbox"/> For null hypothesis testing, the test statistic (e.g. $F$ , $t$ , $r$ ) with confidence intervals, effect sizes, degrees of freedom and $P$ value noted<br><i>Give <math>P</math> values as exact values whenever suitable.</i>                            |
| <input checked="" type="checkbox"/> | <input type="checkbox"/> For Bayesian analysis, information on the choice of priors and Markov chain Monte Carlo settings   |
| <input checked="" type="checkbox"/> | <input type="checkbox"/> For hierarchical and complex designs, identification of the appropriate level for tests and full reporting of outcomes   |
| <input checked="" type="checkbox"/> | <input type="checkbox"/> Estimates of effect sizes (e.g. Cohen's $d$ , Pearson's $r$ ), indicating how they were calculated   |

*Our web collection on [statistics for biologists](#) contains articles on many of the points above.*

### Software and code

Policy information about [availability of computer code](#)

Data collection

Data analysis

For manuscripts utilizing custom algorithms or software that are central to the research but not yet described in published literature, software must be made available to editors and reviewers. We strongly encourage code deposition in a community repository (e.g. GitHub). See the Nature Portfolio [guidelines for submitting code & software](#) for further information.

### Data

Policy information about [availability of data](#)

All manuscripts must include a [data availability statement](#). This statement should provide the following information, where applicable:

- Accession codes, unique identifiers, or web links for publicly available datasets
- A description of any restrictions on data availability
- For clinical datasets or third party data, please ensure that the statement adheres to our [policy](#)

This study is based on publicly available datasets: mortality counts from Eurostat ([https://ec.europa.eu/eurostat/statistics-explained/index.php?title=Weekly\\_death\\_statistics&stable](https://ec.europa.eu/eurostat/statistics-explained/index.php?title=Weekly_death_statistics&stable)), temperature values from ECMWF (<https://cds.climate.copernicus.eu/cdsapp#!/dataset/reanalysis-era5-land?tab=overview>), and population numbers from Eurostat ([https://ec.europa.eu/eurostat/cache/metadata/en/demo\\_r\\_gind3\\_esms.htm](https://ec.europa.eu/eurostat/cache/metadata/en/demo_r_gind3_esms.htm)).

## Human research participants

Policy information about [studies involving human research participants and Sex and Gender in Research](#).

Reporting on sex and gender	We did ecological analyses disaggregated by sex. The analyses were based on publicly available datasets. We did not collect individual-level data.
Population characteristics	Not applicable.
Recruitment	Not applicable.
Ethics oversight	Not applicable.

Note that full information on the approval of the study protocol must also be provided in the manuscript.

## Field-specific reporting

Please select the one below that is the best fit for your research. If you are not sure, read the appropriate sections before making your selection.

Life sciences       Behavioural & social sciences       Ecological, evolutionary & environmental sciences

For a reference copy of the document with all sections, see [nature.com/documents/nr-reporting-summary-flat.pdf](https://www.nature.com/documents/nr-reporting-summary-flat.pdf)

## Life sciences study design

All studies must disclose on these points even when the disclosure is negative.

Sample size	All counts of death (N = 45,184,044) were used.
Data exclusions	No data was excluded.
Replication	Experimental findings are fully reproducible. Experiments were performed independently a number of times.
Randomization	Not applicable due to the nature of the numerical calculations.
Blinding	Not applicable due to the nature of the numerical calculations.

## Reporting for specific materials, systems and methods

We require information from authors about some types of materials, experimental systems and methods used in many studies. Here, indicate whether each material, system or method listed is relevant to your study. If you are not sure if a list item applies to your research, read the appropriate section before selecting a response.

### Materials & experimental systems

n/a	Involved in the study
<input checked="" type="checkbox"/>	<input type="checkbox"/> Antibodies
<input checked="" type="checkbox"/>	<input type="checkbox"/> Eukaryotic cell lines
<input checked="" type="checkbox"/>	<input type="checkbox"/> Palaeontology and archaeology
<input checked="" type="checkbox"/>	<input type="checkbox"/> Animals and other organisms
<input checked="" type="checkbox"/>	<input type="checkbox"/> Clinical data
<input checked="" type="checkbox"/>	<input type="checkbox"/> Dual use research of concern

### Methods

n/a	Involved in the study
<input checked="" type="checkbox"/>	<input type="checkbox"/> ChIP-seq
<input checked="" type="checkbox"/>	<input type="checkbox"/> Flow cytometry
<input checked="" type="checkbox"/>	<input type="checkbox"/> MRI-based neuroimaging