



**HAL**  
open science

# Identification of ClpB, a molecular chaperone involved in the stress tolerance and virulence of *Streptococcus agalactiae*

Lan Yang, Zhihao Wu, Tian-Yu Ma, Hui Zeng, Ming Chen, Yong-An Zhang, Yang Zhou

► **To cite this version:**

Lan Yang, Zhihao Wu, Tian-Yu Ma, Hui Zeng, Ming Chen, et al.. Identification of ClpB, a molecular chaperone involved in the stress tolerance and virulence of *Streptococcus agalactiae*. *Veterinary Research*, 2024, 55 (1), pp.60. 10.1186/s13567-024-01318-6 . hal-04580410

**HAL Id: hal-04580410**

**<https://hal.science/hal-04580410v1>**

Submitted on 20 May 2024

**HAL** is a multi-disciplinary open access archive for the deposit and dissemination of scientific research documents, whether they are published or not. The documents may come from teaching and research institutions in France or abroad, or from public or private research centers.

L'archive ouverte pluridisciplinaire **HAL**, est destinée au dépôt et à la diffusion de documents scientifiques de niveau recherche, publiés ou non, émanant des établissements d'enseignement et de recherche français ou étrangers, des laboratoires publics ou privés.

RESEARCH ARTICLE

Open Access



# Identification of ClpB, a molecular chaperone involved in the stress tolerance and virulence of *Streptococcus agalactiae*

Lan Yang<sup>1†</sup>, Zhihao Wu<sup>1†</sup>, Tian-Yu Ma<sup>1</sup>, Hui Zeng<sup>1</sup>, Ming Chen<sup>1</sup>, Yong-An Zhang<sup>1,2\*</sup> and Yang Zhou<sup>1,2,3\*</sup> 

## Abstract

Bacterial ClpB is an ATP-dependent disaggregate that belongs to the Hsp100/Clp family and facilitates bacterial survival under hostile environmental conditions. *Streptococcus agalactiae*, which is regarded as the major bacterial pathogen of farmed Nile tilapia (*Oreochromis niloticus*), is known to cause high mortality and large economic losses. Here, we report a ClpB homologue of *S. agalactiae* and explore its functionality. *S. agalactiae* with a *clpB* deletion mutant ( $\Delta clpB$ ) exhibited defective tolerance against heat and acidic stress, without affecting growth or morphology under optimal conditions. Moreover, the  $\Delta clpB$  mutant exhibited reduced intracellular survival in RAW264.7 cells, diminished adherence to the brain cells of tilapia, increased sensitivity to leukocytes from the head kidney of tilapia and whole blood killing, and reduced mortality and bacterial loads in a tilapia infection assay. Furthermore, the reduced virulence of the  $\Delta clpB$  mutant was investigated by transcriptome analysis, which revealed that deletion of *clpB* altered the expression levels of multiple genes that contribute to the stress response as well as certain metabolic pathways. Collectively, our findings demonstrated that ClpB, a molecular chaperone, plays critical roles in heat and acid stress resistance and virulence in *S. agalactiae*. This finding provides an enhanced understanding of the functionality of this ClpB homologue in gram-positive bacteria and the survival strategy of *S. agalactiae* against immune clearance during infection.

**Keywords** ClpB, *Streptococcus agalactiae*, stress tolerance, virulence, *Oreochromis niloticus*

Handling editor: Marcelo Gottschalk

<sup>†</sup>Lan Yang and Zhihao Wu have contributed equally to this work.

\*Correspondence:

Yong-An Zhang

yonganzhang@mail.hzau.edu.cn

Yang Zhou

zhouyang@mail.hzau.edu.cn

<sup>1</sup> National Key Laboratory of Agricultural Microbiology; Hubei Hongshan Laboratory; Engineering Research Center of Green Development for Conventional Aquatic Biological Industry in the Yangtze River Economic Belt, Ministry of Education; Shenzhen Institute of Nutrition and Health, College of Fisheries, Huazhong Agricultural University, Wuhan 430000, China

<sup>2</sup> Guangdong Laboratory for Lingnan Modern Agriculture, Guangzhou 510000, China

<sup>3</sup> Shenzhen Branch, Guangdong Laboratory for Lingnan Modern Agriculture, Genome Analysis Laboratory of the Ministry of Agriculture, Agricultural Genomics Institute at Shenzhen, Chinese Academy of Agricultural Sciences, Shenzhen 518000, China



© The Author(s) 2024. **Open Access** This article is licensed under a Creative Commons Attribution 4.0 International License, which permits use, sharing, adaptation, distribution and reproduction in any medium or format, as long as you give appropriate credit to the original author(s) and the source, provide a link to the Creative Commons licence, and indicate if changes were made. The images or other third party material in this article are included in the article's Creative Commons licence, unless indicated otherwise in a credit line to the material. If material is not included in the article's Creative Commons licence and your intended use is not permitted by statutory regulation or exceeds the permitted use, you will need to obtain permission directly from the copyright holder. To view a copy of this licence, visit <http://creativecommons.org/licenses/by/4.0/>. The Creative Commons Public Domain Dedication waiver (<http://creativecommons.org/publicdomain/zero/1.0/>) applies to the data made available in this article, unless otherwise stated in a credit line to the data.

## Introduction

*Streptococcus agalactiae*, also referred to as Group B *Streptococcus* (GBS), is a gram-positive bacterium with a broad spectrum of hosts. GBS is the leading infectious cause of early-onset neonatal sepsis and is being increasingly recognized as a cause of stillbirth and preterm birth in humans [1–3]. However, GBS not only affects humans but also has a severe impact on farmed fish, including Nile tilapia (*Oreochromis niloticus*), giant grouper (*Epinephelus lanceolatus*), ya-fish (*Schizothorax prenanti*), Asian seabass (*Lates calcarifer*), Amazon catfish (*Pseudoplatystoma* sp.), golden pompano (*Trachinotus ovatus*), and wild mullet (*Liza klunzingeri*) [4–6]. GBS is considered the main bacterial pathogen of cultured bacteria tilapia, with morbidity and mortality exceeding 80% in outbreaks [7, 8]. In tilapia, the symptoms of streptococcosis include erratic swimming, exophthalmos, skin lesions, and meningoencephalitis [9, 10].

To successfully infect a range of hosts, GBS has evolved to rapidly adapt to changing environmental conditions, including pH, temperature, and osmolality; it is possible that these conditions trigger a stress response in bacteria [11]. To combat invasive pathogens during streptococcal infection, chemokines are known to attract macrophages and neutrophils to the site of infection. In macrophages, bacteria are engulfed by phagosomes, in which lysosomes produce oxidative and acidic species to kill the bacteria [12]. However, according to previous studies, GBS can remain unharmed in macrophages for several hours [13], suggesting that this bacterium has the ability to withstand intracellular conditions in macrophages. Macrophages have been identified as potential “Trojan horses” that help pathogens breach the blood–brain barrier (BBB) and enter the central nervous system, ultimately leading to meningitis [14, 15].

Heat shock proteins (Hsps) are proteins that play essential roles in stress responses and function as molecular chaperones to stabilize proteins and aid protein refolding under stressful circumstances [16]. ClpB (Hsp100), one of the major bacterial molecular chaperones, is expressed in bacteria, protozoa, fungi, and plants but not in animals or humans [11]. ClpB has the ability to disaggregate stress-denatured proteins along with the DnaK system, thus protecting bacteria from a range of stressors, including heat, acidity, and oxidation [17, 18]. Over the past few decades, ClpB has been investigated in both gram-negative and gram-positive bacteria, revealing its role in stress responses and virulence [19]. In the case of *Francisella novicida*, a bacterium commonly used as a laboratory model for tularemia, deletion of the *clpB* gene not only increased susceptibility to high temperatures but also attenuated intracellular replication in J774A.1 cells [20]. However, the role of ClpB in the stress

response and virulence of *Streptococcus* species has yet to be investigated.

In this study, the SAHN016\_02930 protein was annotated as an ATP-dependent ClpB protease in the GBS strain HN016. To investigate the biological functionality of ClpB during GBS infection, we generated a *clpB* gene deletion strain and then assessed the sensitivities of the mutant strain to multiple stress conditions. In addition, we evaluated the contribution of ClpB to the virulence of GBS by performing a range of ex vivo and in vivo experiments. Prokaryotic transcriptome sequencing was also performed to analyse the possible regulatory network regulated by *clpB* during macrophage survival.

## Materials and methods

### Bacterial strains, plasmids, cell lines, and growth conditions

The bacterial strains, plasmids, and cell lines used in this study are described in Additional file 3. The GBS strain of HN016 was isolated in 2010 from diseased tilapia in Guangdong Province, China [21]. Strains of GBS were cultured in Todd–Hewitt broth (THB) (Hopebio, China) supplemented with 1.5% (wt/vol) agar at 28 °C. *Escherichia coli* strain DH5 $\alpha$  (Trans, Beijing, China) was grown in Luria-Bertani broth (LB) (Hopebio, China) supplemented with 1.5% (wt/vol) agar at 37 °C. The thermosensitive pSET4 suicide vector was used for gene mutation [22]. The antibiotic spectinomycin (Spc) (Biofroxx, Germany) was added to the medium at 100  $\mu$ g/mL for GBS or 50  $\mu$ g/mL for *E. coli*, as needed. Murine leukaemia cells from monocyte macrophages (RAW264.7) [26] were cultured in Dulbecco’s modified Eagle medium (DMEM; Gibco, USA) supplemented with 10% foetal bovine serum (FBS; Sigma–Aldrich, USA) at 37 °C with 5% CO<sub>2</sub>. Tilapia brain (TiB) cells were cultured in DMEM supplemented with 10% FBS at 28 °C. TiB cells, a fibroblast line derived from the brains of tilapia, were a gift from Foshan University [23].

### Bioinformatics analysis

The primary protein sequences of ClpB from GBS (GenBank accession no. AKT95669.1), *E. coli* (GenBank accession no. CAD6006397.1), *Enterococcus faecalis* (GenBank accession no. CWW57247.1) and *Francisella tularensis* (GenBank accession no. AFB79746.1) were downloaded and retrieved from the National Centre for Biotechnology Information (NCBI) databases. The amino acid sequences of the ClpB proteins were compared via Clustal Omega software online. ESPript 3.0 was used to perform various tasks in predicting the secondary structure and sequence homology [24]. Tertiary structures were predicted by SWISS-MODEL and confirmed via PROCHECK [25]. Additional file 4 provides details about

the websites, bioinformatics analysis software, and databases used in this study.

#### ATPase activity of ClpB

The recombinant ClpB was diluted to different concentrations (0.1  $\mu\text{mol/L}$ –5  $\mu\text{mol/L}$ ) and added to working buffer (100 mmol/L Tris-HCl [pH 8.0], 10 mmol/L  $\text{MgCl}_2$ , 5 mmol/L ATP, 1 mmol/L EDTA, and 1 mmol/L dithiothreitol) in the absence/presence of  $\alpha$ -casein (0.25 mg/mL) for 15 min at 37 °C. Then, ClpB-ATPase activity was measured by estimating the concentration of inorganic phosphate produced from ATP by using the malachite green colorimetric assay [26].

#### Construction of the mutant strain

To construct the GBS *clpB* deletion mutant ( $\Delta clpB$ ), the upstream and downstream fragments of *clpB* were amplified with the primers *clpB*-A/B and *clpB*-C/D, respectively, using gDNA from GBS HN016 as the template. To amplify the *clpB*-OP fusion fragment, overlapping extension PCR was performed using the upstream and downstream fragments as templates with the primers *clpB*-A/*clpB*-D. The restriction enzymes SmaI and Sall were used to digest the fusion fragment and pSET4s, and T4 DNA ligase was subsequently used to construct the *clpB* deletion vector pSET4s-*clpB*. The possible vectors were transformed into *E. coli* DH5 $\alpha$  for propagation and verified by colony PCR. Prior to electroporation into GBS HN016 competent cells, pSET4s-*clpB* were sequenced, and the cells were selected with Spc. To confirm whether the deletion affects the expression of upstream and downstream genes, qRT-PCR targeting the upstream and downstream genes was performed using cDNA from the strain with the identified  $\Delta clpB$  gene as a template. The primers used in this study are described in Additional file 5.

#### Growth rate analysis

Bacteria were grown to the mid-log phase ( $\text{OD}_{600}=0.6$ ) and diluted to  $\text{OD}_{600}=0.1$ . Three technical duplicates of 200  $\mu\text{L}$  of each culture were added to a 96-well microplate for  $\text{OD}_{600}$  measurements. The microplate was incubated at 28 °C, and the  $\text{OD}_{600}$  was measured automatically by a microplate reader (BioTek Epoch 2, USA) every 30 min with shaking for 10 s before measurement. The average of the replicates is represented as the  $\text{OD}_{600}$  against time.

#### Gram staining

Bacteria were collected and washed twice with phosphate-buffered saline (PBS; Solarbio, China). Twenty microlitre samples were fixed on glass slides (25 mm $\times$ 75 mm and 1 mm in thickness; Citotest, China). A Gram Staining Kit (Solarbio, China) was used

according to the manufacturer's instructions. Light microscopy was used to observe the stained samples. In the images, 50 chains of each strain were selected randomly and measured.

#### Transmission electron microscopy (TEM)

TEM was performed as previously described [27]. Bacteria were collected, washed twice with PBS, and fixed in 2.5% glutaraldehyde overnight at 4 °C. Once the samples were embedded and sliced, they were observed by TEM (H-7650, HITACHI, Japan) and then randomly selected for capsule measurement.

#### Sensitivity of GBS strains to stress

To explore the function of ClpB in stressful environments, the strains were subjected to various stresses using a method described previously [28]. Bacterial cultures were centrifuged, washed, resuspended in PBS, and then incubated at 45 °C for 15 or 30 min. For the acidic assay, the bacteria were collected, washed, and suspended in PBS at different pH values (3, 5, and 7) for 1 h at 28 °C. The existing cells were spread on THB plates at the appropriate dilutions and incubated at 28 °C. The proportion of survivors was used to calculate the survival rate.

The response of the GBS strains to oxidative and osmotic stress was assessed as previously described [29]. The cultures at the mid-log phase were diluted to  $\text{OD}_{600}=0.1$  in THB supplemented with 1 mM  $\text{H}_2\text{O}_2$  or 500 mM NaCl. The  $\text{OD}_{600}$  measurements were processed as described in the subsection “Construction of the mutant strain”.

#### Adhesion and invasion assays

TiB cells were used to conduct adhesion and invasion assays as previously reported [30]. In the adherence assay, bacteria suspended in DMEM were added to TiB cells at a multiplicity of infection (MOI) of 10 and then incubated at 28 °C for 2 h. Following three PBS washes, sterile distilled water was used to lyse the infected cells. Adherent bacteria were diluted appropriately and plated on THB agar plates. The invasion assay was performed similarly to the adhesion assay. Before the final lysis, the infected cells were cultured for an additional 2 h in DMEM containing penicillin and streptomycin to kill the extracellular bacteria. The serially diluted lysates were plated and incubated at 28 °C overnight for colony counting.

#### Intracellular viability in macrophages

As previously described, the phagocytosis assay was conducted in RAW 264.7 cells [31]. GBS strains were resuspended in DMEM, added to RAW 264.7 cells at an MOI of 1/10/100, and incubated at 37 °C for 1 h. Then, extracellular bacteria were eliminated by incubation in DMEM

containing penicillin and streptomycin for 1 h. The cells containing phagocytic bacteria were cultured for another 4, 8, 12, or 24 h, followed by washing, disruption, and viable cell counting.

#### Whole-blood bactericidal assays

As previously described, the bactericidal activity was tested in tilapia whole blood [32]. Bacteria were washed and resuspended in PBS containing 1% FBS, and the strains (100  $\mu$ L) were mixed with 900  $\mu$ L of fresh whole blood from tilapia that had been heparinized. The mixture was then incubated for 90–180 min at 28 °C with several rotations. The mixtures were plated and incubated at 28 °C to count the viable bacteria. The fold change of bacteria in the blood was expressed as the bacterial load after incubation compared to that in the initial inoculum.

#### Leukocyte bactericidal assays in tilapia

The head kidney of tilapia was dissociated into cell suspensions in DMEM and then dispersed through nylon mesh (40  $\mu$ m; BD Biosciences, USA). Using previously reported methods [8, 33, 34], head kidney leukocytes (HKLs) were separated using 51/34% discontinuous Percoll (GE Healthcare, China) density gradients. Then, the GBS strains in the mid-log phase were centrifuged and resuspended in DMEM. At an MOI of 10, HKLs were added to the bacteria, which were subsequently cultured at 28 °C with 5% CO<sub>2</sub> for 2/3 h. After the addition of Triton X-100 (0.02%) to lyse the cells, the cultures were plated after serial dilution and incubated overnight at 28 °C.

#### Pathogenicity studies in tilapia infection

Bacteria were collected, centrifuged, and resuspended in PBS. After anaesthesia, the tilapia were then intraperitoneally (i.p.) injected with  $2 \times 10^8$  CFU/fish. Sixty fish were randomly divided into 2 groups of 30 fish each. The infected fish were monitored and fed twice a day for 14 days in individual tanks where the water temperature was maintained at 34 °C. This experiment was conducted twice.

To better evaluate the pathogenicity of  $\Delta clpB$ , we determined the number of viable bacteria in the organs. A total of 20 fish were divided into 2 groups at random and i.p. injected with strains at a dose of  $5 \times 10^5$  CFU/fish. At 12 h postinfection, brain, spleen, and blood samples were collected, weighed, and homogenized in PBS. The samples were then serially diluted and plated for colony counting.

#### Transcriptomic analysis

Bacteria were resuspended and incubated with RAW264.7 cells at 37 °C for 1 h. After removing the extracellular bacteria, the samples were centrifuged. RNA extraction, library preparation, and Illumina HiSeq sequencing were performed on an Illumina NovaSeq 6000 platform at the Shanghai Biozeron Bioinformatics Center (China). RPKMs (reads per kilobase per million reads) were used to determine the gene expression level of each transcript.

#### Quantitative real-time polymerase chain reaction (qRT-PCR) analysis

qRT-PCR was performed as previously reported [34]. Total bacterial RNA was extracted and reverse transcribed into cDNA. A CFX Connect™ Real-Time System (Bio-Rad, USA) was used for qRT-PCR analysis, and each sample was analysed in triplicate. The 16S rRNA housekeeping gene was used as the internal control gene when determining the gene expression level via the 2<sup>- $\Delta\Delta$ Ct</sup> method [35]. The qRT-PCR primers used are listed in Additional file 5.

#### Statistical analysis

The experiments were repeated three times. The measured experimental data are expressed as the mean  $\pm$  standard deviation. Using the software GraphPad Prism 8.0, a two-tailed unpaired Student's *t* test was used to evaluate the *P* value. Statistical significance was defined as *P* < 0.05.

## Results

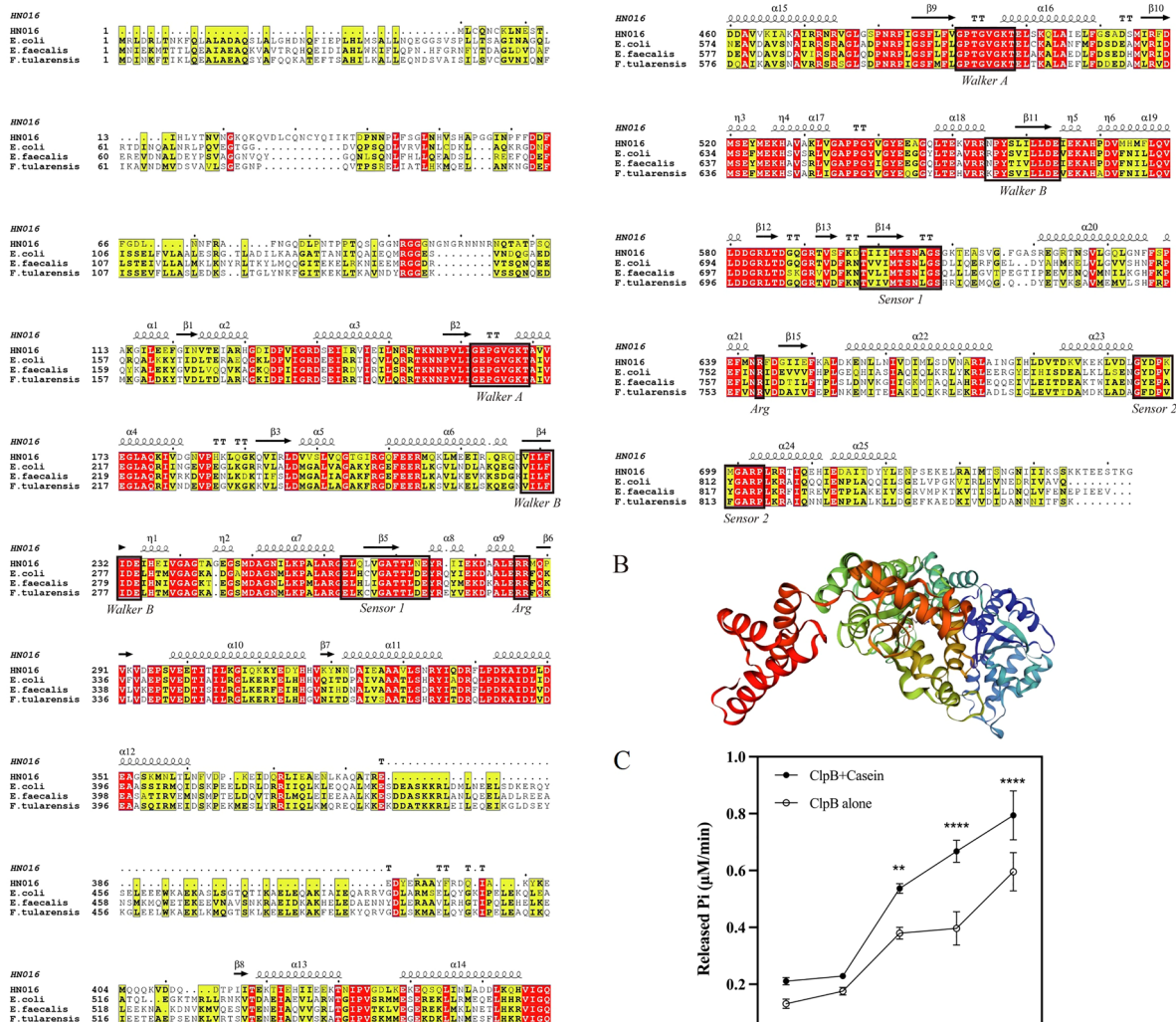
#### Identification of a ClpB homologue in GBS

In the genome of the GBS strain HN016, we annotated the SAHN016\_02930 protein as a ClpB protease. ClpB<sub>GBS</sub> consists of 753 amino acids, compared to the 857 amino acids of *E. coli* ClpB (ClpB<sub>Ec</sub>). Multiple sequence alignment of amino acids showed that ClpB<sub>GBS</sub> is similar to homologues of *E. coli* (40.2% identity), *E. faecalis* (39.7% identity), and *F. tularensis* (40.2% identity). To evaluate the distribution of ClpB among GBS strains, we performed a BLASTP search of the NCBI database and found that ClpB was conserved across various GBS strains, with protein homology ranging from 99.60 to 100% (Additional file 6).

Sequence alignment of ClpB<sub>GBS</sub> revealed that this protein has a multidomain organization similar to that of ClpB<sub>Ec</sub>, including one N-terminal domain (ND), two nucleotide-binding domains (NBD-1/-2), a middle coiled-coil domain (MD), and a C-terminal domain (CD) (Figure 1A). The two NBDs are the most highly conserved, and the main differences are in the ND and the



A



**Figure 1** Bioinformatics analysis of the ClpB protein. **A** Multiple sequence alignments of ClpB in GBS HN016 and other ClpB isoforms (*E. coli*/*E. faecalis*/*F. tularensis*). The conserved Walker A/B motifs, sensor 1/2 motifs and arginine residues are boxed. **B** The tertiary structure of ClpB predicted by SWISS-MODEL software. ND (blue), NBD-1 (sky blue), MD (green), NBD-2 (orange), and CD (red). **C** ATPase activity of rClpB<sub>GBS</sub>.

CD. The prediction model of ClpB<sub>GBS</sub> showed that its reference template protein was 8a8u.1.D (SWISS-MODEL template library), and the template coverage was 82% (Figure 1B). The reasonability of the prediction model was confirmed by PROCHECK (Additional file 1).

**ATPase activity of ClpB**

Amino acid sequence analysis revealed the presence of two conserved NBDs in ClpB<sub>GBS</sub> that are involved in ATP binding. We analysed the ATPase activity of rClpB<sub>GBS</sub> in the presence and absence of α-casein, which revealed that rClpB<sub>GBS</sub> exhibited ATPase activity within

a concentration range of 0.1–5 μmol/L. However, the ATPase activity of rClpB<sub>GBS</sub> increased in the presence of α-casein (Figure 1C).

**ClpB was not required for growth or cellular morphology under optimal conditions**

To investigate the role of ClpB in GBS, we constructed a *clpB* deletion mutant of GBS HN016 by homologous recombination, which was confirmed by PCR. We used an external test primer (*clpB*-G/H) to amplify a 1034 bp fragment from Δ*clpB*, a 3.1 kb fragment from the wild-type (WT) strain, and an inner test primer (*clpB*-E/F)

to amplify a 500 bp fragment from the WT; the inner test primer did not amplify a fragment from  $\Delta clpB$  (Figure 2A). The expression levels of the *clpB* gene were also verified by qRT-PCR in the WT and  $\Delta clpB$  strains. The qRT-PCR results showed that the *clpB* gene was expressed in the WT but was not expressed in the deletion strain, further confirming that the deletion strain had been successfully constructed (Additional file 2).

To investigate the regulatory impact of *clpB* on the growth of GBS, we generated growth curves by measuring the OD<sub>600</sub>. The growth rates of the  $\Delta clpB$  and WT strains were not significantly different when they were cultured in THB at 28 °C (Figure 2B), indicating that, in a suitable environment, the deletion of the *clpB* gene did not impair the growth of GBS.

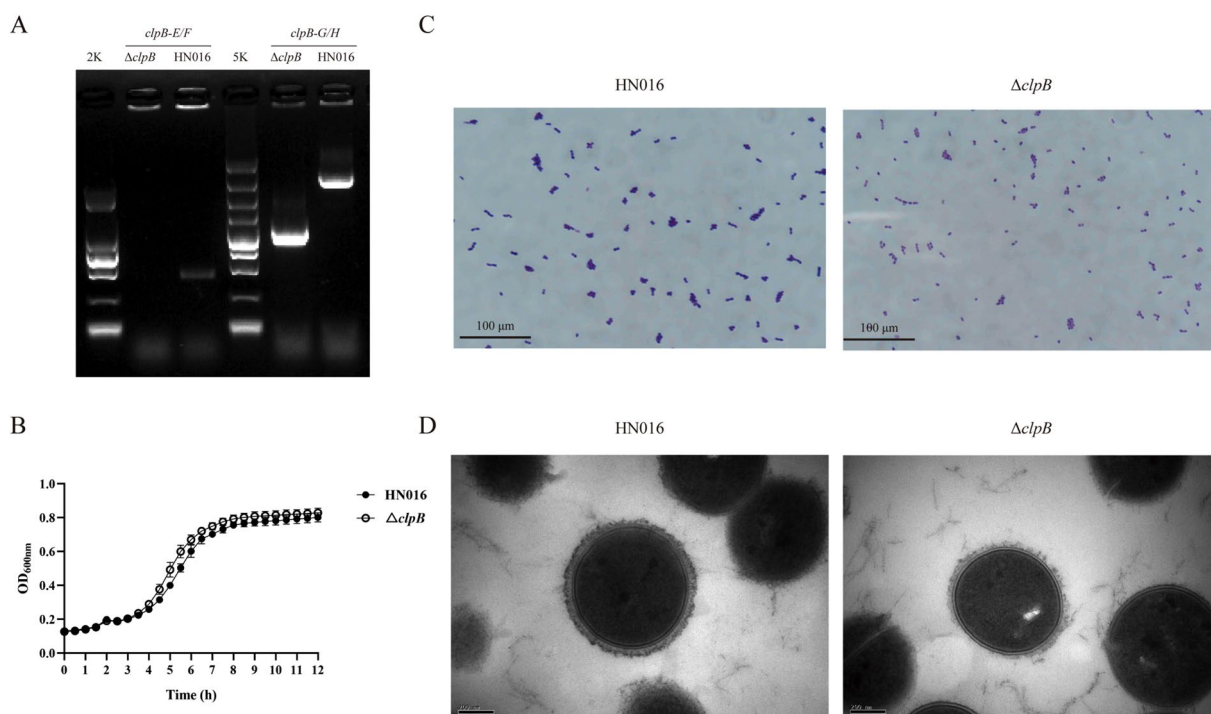
To investigate morphological variations between the two strains, we carried out Gram staining and TEM to measure chain length and capsule thickness. Bacteria were grown to the mid-log phase, stained with crystal violet, and imaged. On average,  $\Delta clpB$  had a similar chain length, with an average length of 8.9 μm per chain, compared to the average length of 9.3 μm per chain in the WT ( $P > 0.05$ ) (Figure 2C). TEM further revealed that the mean capsule thicknesses for the  $\Delta clpB$  and WT strains were 49.2 and 41.2 nm, respectively; these values were not significantly different ( $P > 0.05$ ) (Figure 2D).

Thus, our findings indicate that the deletion of *clpB* had no influence on the morphology of GBS under optimal conditions.

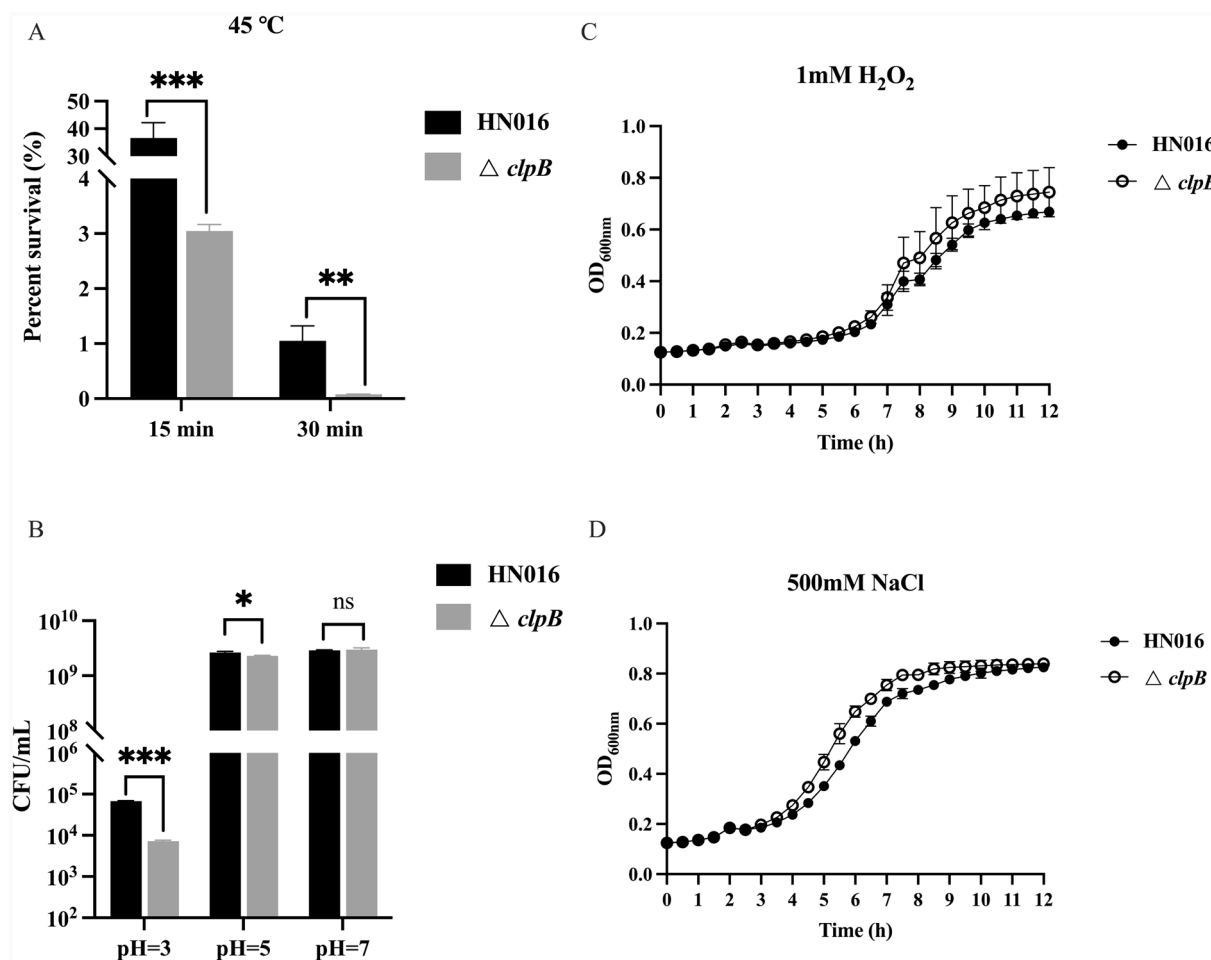
**The ClpB protein contributes to heat and acid stress resistance but not to oxidative or osmotic stress**

GBS can infect a diverse range of hosts, which implies that this pathogen can adapt to various environments. In this study, the GBS strains were exposed to a variety of stress conditions, including heat, acidic pH, and oxidative and osmotic stress, during in vivo infection experiments. In the heat stress study, compared with that of the WT, the survival rate of the  $\Delta clpB$  mutant significantly decreased in response to heat stress (45 °C), suggesting that ClpB contributes to the thermotolerance of GBS (Figure 3A). Under acidic conditions, the survival of the two strains showed remarkable variations when the pH was 3 or 5. Compared to that of the WT strain ( $6.8 \times 10^4$  CFU/mL), the CFU of the  $\Delta clpB$  strain decreased significantly at pH 3 ( $7.2 \times 10^3$  CFU/mL). However, the survival rates (%) were comparable between the strains at pH 7 (Figure 3B).

Given that ClpB contributes to tolerance under heat and acidic conditions, we next investigated the potential involvement of ClpB in oxidative or osmotic stress (Figures 3C and D). The growth curves for  $\Delta clpB$  did not



**Figure 2 Construction and biological characterization of  $\Delta clpB$ .** **A** PCR confirmation of *cΔclpB* using the primers *clpB*-E/F and *clpB*-G/H. **B** Growth curves of GBS strains cultured in THB at 28 °C. **C** Gram staining and microscopic observation of the WT and  $\Delta clpB$  strains. **D** Transmission electron microscopy of the WT and  $\Delta clpB$  strains.



**Figure 3** Bacterial viability and growth curves of the WT and  $\Delta clpB$  strains. Surviving colonies were quantified under thermo (A) and acidic (B) conditions; OD<sub>600</sub> values were recorded under oxidative (C) and osmotic (D) conditions. ns, not significant; \* $P < 0.05$ , \*\* $P < 0.01$ , \*\*\* $P < 0.001$ .

differ significantly from those for the WT, indicating that ClpB had no effect on the response of GBS to oxidative or osmotic stress.

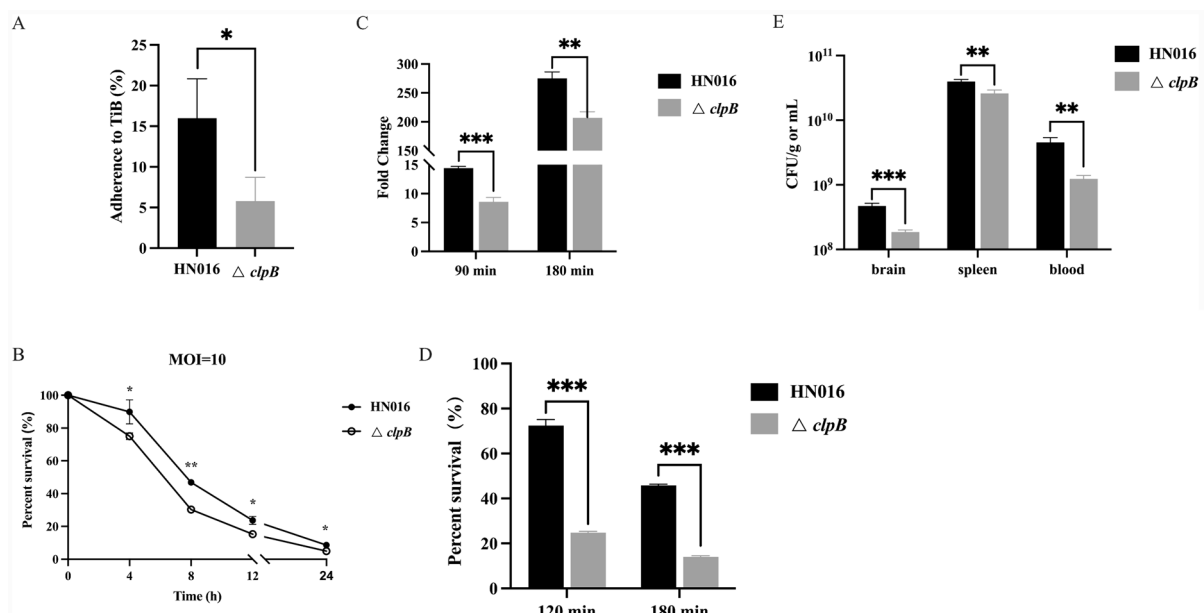
### ClpB plays a key role in virulence

To investigate whether ClpB affects GBS interactions with the host, we performed a range of adherence, invasion, and phagocytosis assays. We found that the deletion of *clpB* failed to reduce invasion into the TiB cells but resulted in a 63.7% reduction in adherence to the TiB cells ( $P < 0.05$ ) (Figure 4A). The survival rates of the two strains in RAW264.7 cells were also investigated; these analyses showed that the viable counts of the  $\Delta clpB$  strains were lower than those of the WT strain. At 4 h postengulfment, only approximately 54.3% of the  $\Delta clpB$  strain survived at an MOI of 10; in contrast, the survival rate of the WT strain was 78.1% ( $P < 0.0001$ ) (Figure 4B). These findings support the idea that ClpB is essential for survival within macrophages.

When whole blood and HKLs from tilapia were exposed to  $\Delta clpB$ , we observed greater susceptibility to bactericidal impact and poorer viability ex vivo. In the whole-blood bactericidal assay, CFU counts for the two strains increased after 90 and 180 min of incubation, respectively, indicating that GBS could proliferate in the whole blood of tilapia. However, the multiplication rates were significantly lower in the *clpB* deletion strain (8.6-fold) than in the WT strain (14.4-fold;  $P < 0.001$ ) (Figure 4C). When incubated with HKLs isolated from tilapia, the  $\Delta clpB$  strain was more sensitive to leukocytes and showed a lower survival rate (14.0%) than the WT strain (45.8%;  $P < 0.001$ ) (Figure 4D).

To gain a better understanding of the functionality of *clpB* during systemic infection, we evaluated the bacterial load in several organs (Figure 4E). At 12 h postinfection, the CFU of the  $\Delta clpB$  strain was significantly lower than that of the WT strain, with a 3.7-fold reduction in the blood, a 1.5-fold reduction in the spleen, and a 2.5-fold





**Figure 4** Effects of *clpB* gene deficiency on the pathogenicity of GBS **A** Adherence testing of WT and  $\Delta clpB$  strains to TiB cells. **B** Phagocytosis assays were performed on RAW 264.7 cells. **C** Multiplication rates of WT and  $\Delta clpB$  in the whole blood of tilapia after 90 and 180 min. **D** Survival of WT and  $\Delta clpB$  cocultured with tilapia HKLs for 2 and 3 h. **E** Colonization of the WT and  $\Delta clpB$  strains in various tissues from tilapia. ns, not significant; \* $P < 0.05$ , \*\* $P < 0.01$ , \*\*\* $P < 0.001$ .

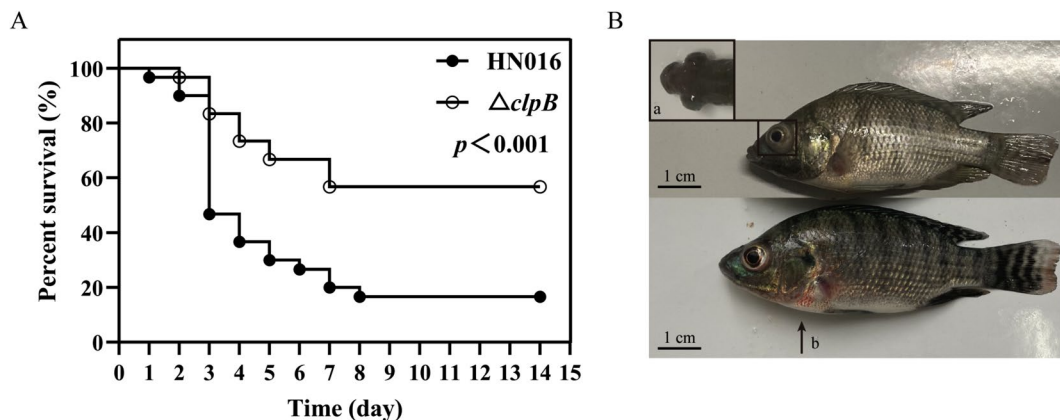
reduction in the brain. These findings provide significant evidence that ClpB plays a crucial role in the pathogenesis of GBS.

To investigate the effect of *clpB* inactivation on GBS virulence, we injected tilapia via the i.p. route with either WT or  $\Delta clpB$  at a dose of  $2 \times 10^8$  CFU/fish (Figure 5A). Tilapia infected with WT rapidly succumbed, exhibiting exophthalmia, corneal opacity, and disorientation (Figure 5B), with a death rate of 50% within 72 h. In contrast, only 18.9% mortality occurred within 72 h in the  $\Delta clpB$

infection group. At 14 d postinfection, 56.7% of the tilapia survived the  $\Delta clpB$  challenge, whereas only 16.7% of tilapia in the WT infection group survived, indicating that  $\Delta clpB$  has attenuated virulence in tilapia (Additional file 7).

***clpB* gene deficiency caused changes in the bacterial transcriptome**

Since our previous results revealed that *clpB* deletion significantly affected virulence, we next analysed the

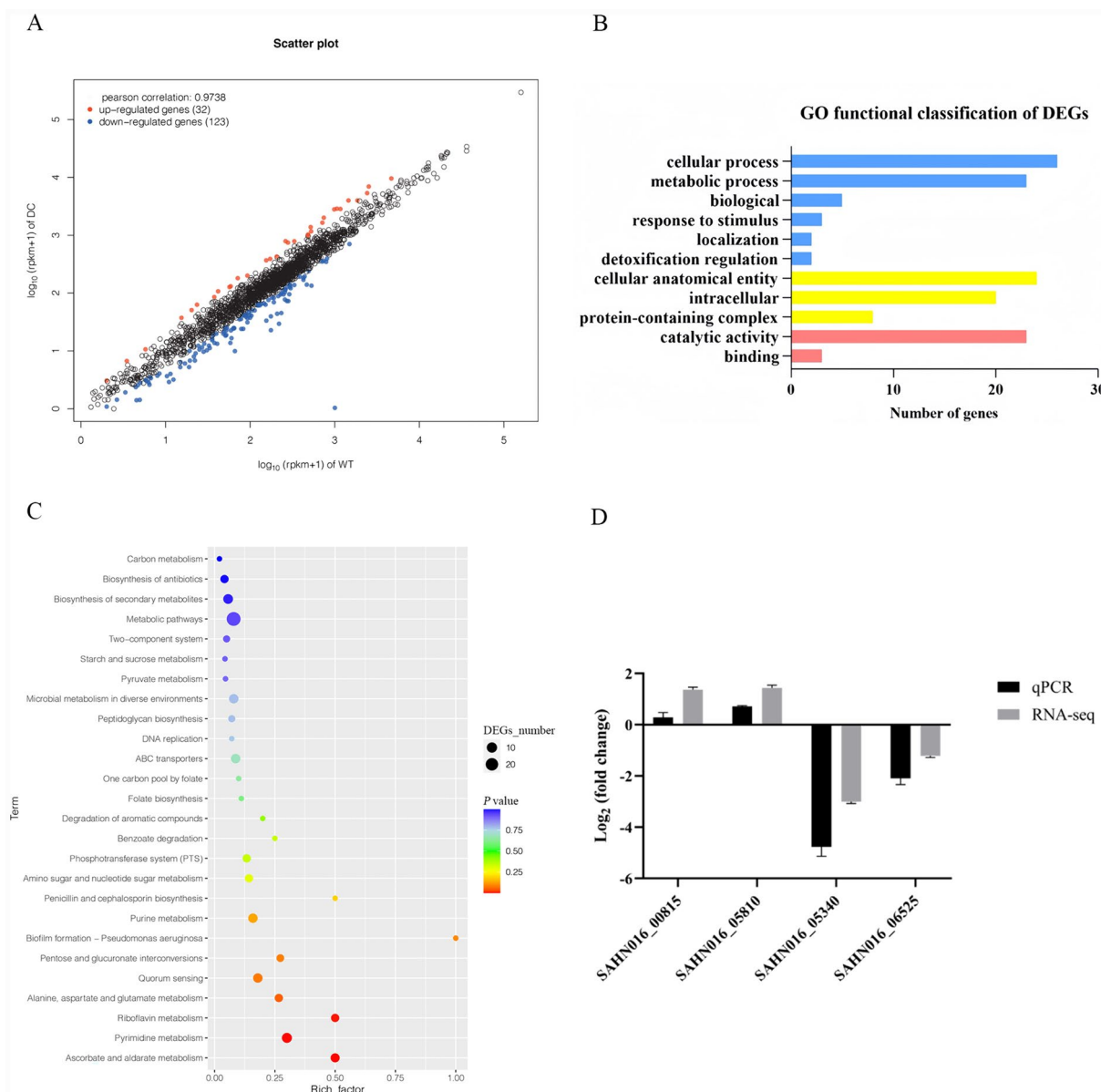


**Figure 5** Tilapia infection assay **A** Survival curves of tilapia infected with the two strains ( $n = 30$ ). **B** Clinical symptoms of tilapia. **a** exophthalmos; **b** skin lesion.

transcriptome of the *clpB* mutant to determine global changes in the whole genome. We compared the transcriptional profiles of the *clpB* mutant and WT strains after culture with RAW 264.7 cells. A total of 155 differentially expressed genes (DEGs) were identified in the  $\Delta clpB$  strain (Additional file 8), with 32 upregulated genes and 123 downregulated genes (Figure 6A). The upregulated genes included several important stress response genes and genes that are known to be associated with intracellular survival in macrophages. These genes included the stress response regulator *Gls24*

(SAHN016\_05815), the universal stress protein *UspA* (SAHN016\_08150), and carbamoyl-phosphate synthase (SAHN016\_05340), which have been confirmed to be involved in the response to environmental stress and intracellular survival. The downregulated genes were associated with multiple metabolic pathways.

Applying GO functional annotation, 149 DEGs were annotated to three major functions: biological processes (64, 43.0%), cellular components (52, 34.9%), and molecular functions (33, 22.1%) (Figure 6B). Kyoto Encyclopedia of Genes and Genomes (KEGG) enrichment



**Figure 6** Transcriptome analysis of GBS strains. **A** Scatter plot showing DEGs. **B** GO functional classification of DEGs. **(C)** KEGG pathway analysis. **D** Verification of the transcriptome sequence.

analysis revealed that the top three categories of DEGs were related to ascorbate and aldarate metabolism, pyrimidine metabolism, and riboflavin metabolism pathways (Figure 6C).

Furthermore, we found that ClpB exerted regulatory effects on four genes known to be associated with intracellular survival in macrophages. The products of these four genes are pyridine nucleotide-disulfide oxidoreductase (SAHN016\_00815), CsbD family protein (SAHN016\_05810), carbamoyl-phosphate synthase (SAHN016\_05340), and acetyltransferase (SAHN016\_06525).

qRT-PCR was used to validate the RNA-seq results, and the agreement between the two sets of data confirmed that the results of the RNA-seq analysis were reliable (Figure 6D). These findings suggest that *clpB* has regulatory effects on multiple metabolic pathways and that GBS compensates for the absence of *clpB* by promoting the expression of other stress response genes.

## Discussion

During infection, pathogens are inevitably exposed to numerous stressors, thus leading to the aggregation and accumulation of specific proteins [36, 37]. To overcome this challenge, pathogens have developed sophisticated molecular systems in which bacterial chaperone systems play a crucial role. These chaperones are essential for bacterial survival, especially under stressful conditions, such as in the presence of the host's immune defence response, including inflammation [19]. ClpB, first identified as a heat shock protein in *E. coli*, is a protein disaggregate known to be important for survival during severe stress in various pathogens [38]. However, prior to this study, the specific functionality of ClpB in GBS patients remained largely unknown.

Previous analysis of the GBS HN016 genome sequence [39] identified the gene encoding the ClpB protease. Sequence alignment revealed that ClpB<sub>GBS</sub> contains two conserved NBDs, the signature of class I AAA+proteases, whereas class II AAA+proteases such as ClpX have only one NBD [40]. To determine the distribution of ClpB, we undertook a systematic search for its homologues. ClpB<sub>GBS</sub> shares identity not only with gram-positive bacteria (*Streptococcus pneumoniae*, *E. faecalis*, *Staphylococcus aureus*, and *Listeria monocytogenes*) but also with gram-negative bacteria (*E. coli* and *F. tularensis*), as well as *Mycobacterium tuberculosis*. Further investigation revealed that this homologue was extensively encoded in most GBS strains, indicating that it may function as a conserved protein chaperone to promote the ability of GBS to cope with stress and/or increase virulence.

To investigate the contribution of ClpB to GBS, we constructed a mutant strain ( $\Delta clpB$ ) in GBS HN016 harbouring a *clpB* deletion. The  $\Delta clpB$  mutant showed an attenuated capacity to tolerate heat and low pH but not oxidative or osmotic stress, indicating that GBS ClpB is essential for acid resistance and thermotolerance; this was consistent with a previous study in *F. tularensis* subsp. *tularensis* SCHU S4 [20]. The *F. tularensis* subsp. *tularensis* SCHU S4  $\Delta clpB$  mutant exhibited extreme sensitivity to high temperature and low pH but not to oxidative stress (osmotic stress was not tested in this previous study). However, in the mediation of stress tolerance in various bacteria, ClpB proteins play a variety of roles. The deletion of *clpB* in *F. novicida* resulted in an extreme defect in survival only under heat pressure [20], while the deletion of *clpB* in *F. tularensis* ssp. *holarctica* rendered the strain highly sensitive to heat, ethanol, oxidation, and low pH [41]. Furthermore, *clpB* null mutants of *Salmonella enterica* serovar Typhimurium and *Vibrio cholerae* both exhibited increased susceptibility to heat and oxidative stress [42, 43]. In *M. tuberculosis*, the genetic depletion of *clpB* impaired bacterial recovery after exposure to host-like stresses, particularly reactive nitrogen species [18, 44]. Collectively, these results demonstrate that ClpB<sub>GBS</sub> helps to mediate tolerance to some adverse conditions, particularly heat, but does not confer tolerance to all types of stress stimuli.

Streptococcal outbreaks in farmed tilapia tend to occur in hot summers when water temperatures rise [45, 46]. It has been reported that a water temperature above 26 °C can lead to the development of streptococcal outbreaks caused by GBS infection in tilapia under both natural [7, 46] and experimental conditions [47]. According to our stress tolerance assays,  $\Delta clpB$  showed a significantly attenuated ability to tolerate heat, indicating the dominant contribution of ClpB to thermotolerance. Therefore, we hypothesized that during the infection process, GBS encounters heat conditions and is able to overcome heat shock via the heat shock protein ClpB. Furthermore, a high temperature that exceeds the optimum range for fish can also negatively impact their physiology, including that of the immune system [48, 49]. This hypothesis was supported by the fact that  $\Delta clpB$  showed significantly attenuated mortality compared to that of WT tilapia when the water temperature was maintained at 34 °C.

In addition to promoting stress tolerance, multiple important bacterial pathogens are known to utilize ClpB during infection. With this in mind, we performed a phagocytosis assay and a tilapia infection assay to compare the systemic infection capacity of  $\Delta clpB$  with that of the parent strain. We found that the  $\Delta clpB$  mutant showed impaired intracellular viability in macrophages. The acidic lysosomes in macrophages are engaged in the

digestion and clearance of invading streptococci, and the low pH within these lysosomes results in the elimination of engulfed bacteria [50]. In our stress tolerance assays,  $\Delta clpB$  also exhibited a significant reduction in response to acidic stress. GBS lacking *clpB* exhibited increased sensitivity to acidic pH, which subsequently resulted in reduced intracellular viability in macrophages. Similarly, a previous study showed that the CovS/R system, a crucial two-component system, improved the intracellular survival and resilience of macrophages to pH stress caused by GBS [14]. GBS successfully evades multiple antimicrobial agents in the blood via its intracellular location in macrophages; this process is crucial for the development of bacteremia and subsequent meningitis [51]. Indeed, the bacterial load in the brains of tilapia infected with  $\Delta clpB$  was significantly reduced, indicating that  $\Delta clpB$  has a weakened ability to breach the blood–brain barrier (BBB). According to the “Trojan horse” theory, *Streptococcus suis* is engulfed by macrophages, allowing the bacteria to persist and circulate intracellularly [52, 53]. Moreover, *Piscirickettsia salmonis* was demonstrated to significantly upregulate ClpB expression during intramacrophage growth, thus demonstrating that ClpB allows bacteria to conform to adverse intracellular environments and promotes replication [54].

In our tilapia infection assay,  $\Delta clpB$  showed poor colonization in the blood, indicating that  $\Delta clpB$  is more easily eliminated by antimicrobial agents in the blood. As a result, *clpB* deficiency had a negative impact on the ability of GBS to spread from the bloodstream to other tissues, such as the brain, liver, and kidney. A previous study involving tilapia reported that GBS infection caused differing degrees of degeneration and necrosis in the liver, spleen, kidney, eyes, and brain [55]. These earlier findings were consistent with those from our tilapia infection assay, where the burden created by the  $\Delta clpB$  mutation in the spleens and brains of tilapia was significantly lower than that in the WT. These findings demonstrated the crucial role of ClpB in bacterial tolerance to acidic pH, contributing to GBS survival *in vivo*.

These findings raised the question of whether the crucial and ostensibly conserved role of ClpB in GBS virulence results from its involvement in managing stress or from a more direct role in controlling virulence factors. We compared the transcriptional profiles of the strains to clarify the impacts of ClpB on the transcriptome. Our analyses indicated that ClpB exerts regulatory effects on key metabolic pathways, including the ascorbate and aldarate, pyrimidine, and riboflavin metabolism pathways. Similarly, in the case of *P. gingivalis*, 136 genes were differentially regulated in the *clpB* mutant according to the overall genetic profile. Based on the regulatory pattern of genes, functional

classifications were created, including the cell envelope and the biosynthesis of proteins, purines, pyrimidines, nucleosides, and nucleotides [56]. Furthermore, in *Leptospira interrogans*, the majority of ClpB-interacting proteins were shown to be involved in key metabolic pathways, including glycolysis-gluconeogenesis, the tricarboxylic acid (TCA) cycle, and amino acid and fatty acid metabolism [19]. Metabolic processes, especially nucleotide biosynthesis, have an important influence on bacterial growth and virulence. It is necessary for the majority of free-living organisms to produce and/or acquire purines and pyrimidines, the building blocks of nucleotides, to exist [57]. Bacterial growth in human blood requires the biosynthesis of purines and pyrimidines, as demonstrated in *E. coli*, *S. typhimurium*, and *Bacillus anthracis* [58]. In addition to its role in metabolism, our transcriptomic analysis revealed that ClpB regulates four genes known to be associated with intracellular survival in macrophages, whose products are pyridine nucleotide-disulfide oxidoreductase, the CsbD family protein, carbamoyl-phosphate synthase, and acetyltransferase. Pyridine nucleotide-disulfide oxidoreductase, also known as SAHN016\_00815, is involved in disulfide oxidoreductase activity and electron transport [51]. According to a previous transcriptomic analysis, the expression of pyridine nucleotide-disulfide oxidoreductase was downregulated in GBS patients during vaginal colonization [59]. However, in our present investigation, the expression of this gene was upregulated in the  $\Delta clpB$  strain compared to the WT strain, suggesting that the deletion of *clpB* prevents GBS from downregulating *clpB* in response to stressful conditions. The CsbD family protein, also known as SAHN016\_05810, is a bacterial protein produced in response to general stress [60]; however, there are no reports related to the function of CsbD-like proteins in GBS. In *Bacillus subtilis*, the CsbD family of proteins manipulates the expression of general stress genes [61]. Thus, we assume that SAHN016\_05810 is elevated to compensate for the absence of ClpB. Using a hypersensitive *E. coli* genetic system, Park et al. [62] demonstrated that carbamoyl-phosphate synthase was implicated in resistance to nitrosative stress caused by reactive nitrogen intermediates. In addition, SAHN016\_05340, also known as carbamoyl-phosphate synthase, was downregulated, thus resulting in poor intracellular survival of  $\Delta clpB$  in macrophages.

Lysine acetylation is a key metabolic regulatory process in prokaryotes and is carried out enzymatically by the protein acetyltransferase, which transfers acetyl groups in a specific manner. Acetyltransferase, identified as ActG in *Streptococcus mutans*, was previously shown to interfere with water-insoluble EPS synthesis and biofilm



formation in *S. mutans* [63, 64]. The downregulation of SAHN016\_06525, encoding acetyltransferase, may be responsible for the metabolic changes observed in  $\Delta clpB$ .

Furthermore, our qRT-PCR results showed trends similar to those of the RNA-seq results, indicating that the results of the RNA-seq analysis were reliable. According to these findings, we believe that ClpB contributes to the virulence of GBS by promoting energy homeostasis and regulating the expression of several genes associated with the stress response.

Overall, our study identified a molecular chaperone, ClpB, that is involved in stress tolerance and virulence in *S. agalactiae*. We generated a  $\Delta clpB$  mutant that exhibited a defective capacity to confer tolerance to certain stress stimuli in vitro, including heat and low pH. Moreover, we proved that  $\Delta clpB$  exhibited defective intracellular replication ex vivo and weakened systemic infection in vivo. Furthermore, the deletion of *clpB* changed the expression levels of numerous genes and subsequently impacted several cellular processes. These results provide new perspectives on the functionality of molecular chaperones in the virulence of *S. agalactiae*. Considering its high levels of conservation in bacteria and its absence in animals, ClpB also has potential as a target for developing new antimicrobial treatments for treating bacterial infections.

## Supplementary Information

The online version contains supplementary material available at <https://doi.org/10.1186/s13567-024-01318-6>.

**Additional file 1 Ramachandran plot of ClpB Swiss-Models.** Red regions indicate the most favoured region, yellow regions indicate the additional allowed region, and light yellow regions indicate the generously allowed region. The black dots indicate the individual amino acids that make up the protein.

**Additional file 2 Fold change in mRNA expression.** Relative mRNA expression levels of the *clpB* upstream, downstream, and *clpB* genes in the WT and  $\Delta clpB$  strains. The value of the target genes in the WT was set to 1.0. \*ns and \*\*\*\* indicate  $P > 0.05$  and  $P < 0.001$ , respectively. 23.

**Additional file 3 Bacterial strains, plasmids, and cell lines.** Summary of the bacterial strains, plasmids, and cell lines used in this study.

**Additional file 4 Databases and websites used in this study.** Database and bioinformatics analysis software and websites.

**Additional file 5 Primers.** Primers used in this study.

**Additional file 6 ClpB identity in various GBS strains.** The presence of ClpB in various GBS strains.

**Additional file 7 Cumulative number of deaths of tilapia infected with GBS strains.** Death of tilapia infected with GBS strains.

**Additional file 8 Differentially expressed genes (DEGs) in the  $\Delta clpB$  strain.**

## Acknowledgements

We thank Prof. Wei-Wei Zeng at Foshan University for generously providing the TiB cells.

## Authors' contributions

YL: data curation, investigation, writing—original draft preparation. ZW: data curation, investigation, writing—original draft preparation. T-YM: methodology. HZ: supervision. MC: funding acquisition, resources. YZ: conceptualization, funding acquisition, supervision, writing—review and editing. Y-AZ: conceptualization, funding acquisition, supervision, writing—review and editing. All of the authors have read and approved the final manuscript.

## Funding

This study was supported by the National Natural Science Foundation of China (32173015), the China Agriculture Research System of MOF and MARA (CARS-46), the National Key Research and Development Program of China (2023YFD2400701), the National Natural Science Foundation of China (U23A20255), the Laboratory of Lingnan Modern Agriculture Project (NT2021008), and the HZAU-AGIS Cooperation Fund (SZYJ2021027).

## Availability of data and material

The datasets used and/or analysed during the current study are available from the corresponding author upon reasonable request.

## Declarations

### Ethics approval and consent to participate

The animal experiment protocol was approved by the Laboratory Animal Monitoring Committee of Huazhong Agricultural University. All efforts were made to minimize suffering. The study was conducted according to the guidelines of the Laboratory Animal Monitoring Committee of Huazhong Agricultural University (protocol code: HZAUI-2021-0005).

### Competing interests

The authors declare that they have no competing interests.

Received: 21 January 2024 Accepted: 6 March 2024

Published online: 15 May 2024

## References

- Bianchi-Jassir F, Seale AC, Kohli-Lynch M, Lawn JE, Baker CJ, Bartlett L, Cutland C, Gravett MG, Heath PT, Ip M, Le Doare K, Madhi SA, Saha SK, Schrag S, Sobanjo-Ter Meulen A, Vekemans J, Rubens CE (2017) Preterm birth associated with group B *Streptococcus* maternal colonization worldwide: systematic review and meta-analyses. *Clin Infect Dis* 65:S133–S142. <https://doi.org/10.1093/cid/cix661>
- Schrag SJ, Farley MM, Petit S, Reingold A, Weston EJ, Pondo T, Hudson Jain J, Lynfield R (2016) Epidemiology of invasive early-onset neonatal sepsis, 2005 to 2014. *BMC Pediatr* 138:e20162013. <https://doi.org/10.1542/peds.2016-2013>
- Seale AC, Bianchi-Jassir F, Russell NJ, Kohli-Lynch M, Tann CJ, Hall J, Madrid L, Blencowe H, Cousens S, Baker CJ, Bartlett L, Cutland C, Gravett MG, Heath PT, Ip M, Le Doare K, Madhi SA, Rubens CE, Saha SK, Schrag SJ, Sobanjo-Ter Meulen A, Vekemans J, Lawn JE (2017) Estimates of the burden of group B *Streptococcal* disease worldwide for pregnant women, stillbirths, and children. *Clin Infect Dis* 65:S200–S219. <https://doi.org/10.1093/cid/cix664>
- Delannoy CMJ, Crumlish M, Fontaine MC, Pollock J, Foster G, Dagleish MP, Turnbull JF, Zadoks RN (2013) Human *Streptococcus agalactiae* strains in aquatic mammals and fish. *BMC Microb* 13:41. <https://doi.org/10.1186/1471-2180-13-41>
- Palang I, Hirono I, Senapin S, Sirimanapong W, Withyachumnarnkul B, Vanichviriyakit R (2020) Cytotoxicity of *Streptococcus agalactiae* secretory protein on tilapia cultured cells. *J Fish Dis* 43:1229–1236. <https://doi.org/10.1111/jfd.13230>
- Wangkahart E, Thongsrisuk A, Vialle R, Pholchamat S, Sunthamala P, Phudkliang J, Srisapoom P, Wang T, Secombes CJ (2023) Comparative study of the effects of montanide™ ISA 763A VG and ISA 763B VG adjuvants

- on the immune response against *Streptococcus agalactiae* in Nile tilapia (*Oreochromis niloticus*). *Fish Shellfish Immunol* 134:108563. <https://doi.org/10.1016/j.fsi.2023.108563>
7. Ye X, Li J, Lu M, Deng G, Jiang X, Tian Y, Quan Y, Jian Q (2011) Identification and molecular typing of *Streptococcus agalactiae* isolated from pond-cultured tilapia in China. *Fish Sci* 77:623–632. <https://doi.org/10.1007/s12562-011-0365-4>
  8. Zhang YA, Salinas I, Li J, Parra D, Bjork S, Xu Z, LaPatra SE, Bartholomew J, Sunyer JO (2010) IgT, a primitive immunoglobulin class specialized in mucosal immunity. *Nat Immunol* 11:827–835. <https://doi.org/10.1038/ni.1913>
  9. Abdullah S, Omar N, Yusoff SM, Obukwho EB, Nwunjuji TP, Hanan L, Samad J (2013) Clinicopathological features and immunohistochemical detection of antigens in acute experimental *Streptococcus agalactiae* infection in red tilapia (*Oreochromis* spp.). *Springerplus* 2:286. <https://doi.org/10.1186/2193-1801-2-286>
  10. Li YW, Liu L, Huang PR, Fang W, Luo ZP, Peng HL, Wang YX, Li AX (2013) Chronic streptococcosis in Nile tilapia, *Oreochromis niloticus* (L.), caused by *Streptococcus agalactiae*. *J Fish Dis* 37:757–763. <https://doi.org/10.1111/jfd.12146>
  11. Alam A, Bröms JE, Kumar R, Sjöstedt A (2021) The role of ClpB in bacterial stress responses and virulence. *Front Mol Biosci* 8:668910. <https://doi.org/10.3389/fmolb.2021.668910>
  12. Shabayek S, Spellerberg B (2017) Acid stress response mechanisms of group B *Streptococci*. *Front Cell Infect Microbiol* 7:395
  13. Liu GY, Doran KS, Lawrence T, Turkson N, Puliti M, Tissi L, Nizet V (2004) Sword and shield: linked group B streptococcal beta-hemolysin/cytolysin and carotenoid pigment function to subvert host phagocyte defense. *Proc Natl Acad Sci USA* 101:14491–14496. <https://doi.org/10.1073/pnas.0406143101>
  14. Cumley NJ, Smith LM, Anthony M, May RC (2012) The CovS/CovR acid response regulator is required for intracellular survival of group B *Streptococcus* in macrophages. *Infect Immun* 80:1650–1661. <https://doi.org/10.1128/iai.05443-11>
  15. Quach D, van Sorge NM, Kristian SA, Bryan JD, Shelver DW, Doran KS (2008) The CiaR response regulator in group B *Streptococcus* promotes intracellular survival and resistance to innate immune defenses. *J Bacteriol* 191:2023–2032. <https://doi.org/10.1128/jb.01216-08>
  16. Neckers L, Tatu U (2008) Molecular chaperones in pathogen virulence: emerging new targets for therapy. *Cell Host Microbe* 4:519–527. <https://doi.org/10.1016/j.chom.2008.10.011>
  17. Glaza P, Ranaweera CB, Shiva S, Roy A, Geisbrecht BV, Schoenen FJ, Zolkiewski M (2020) Repurposing p97 inhibitors for chemical modulation of the bacterial ClpB/DnaK bi-chaperone system. *J Biol Chem* 296:100079. <https://doi.org/10.1074/jbc.ra120.015413>
  18. Tripathi P, Singh LK, Kumari S, Hakiem OR, Batra JK (2020) ClpB is an essential stress regulator of *Mycobacterium tuberculosis* and endows survival advantage to dormant bacilli. *Int J Med Microbiol* 310:151402. <https://doi.org/10.1016/j.ijmm.2020.151402>
  19. Kędzierska-Mieszkowska S, Arent Z (2020) AAA+ molecular chaperone ClpB in *Leptospira interrogans*: its role and significance in leptospiral virulence and pathogenesis of leptospirosis. *Int J Mol Sci* 21:6645. <https://doi.org/10.3390/ijms21186645>
  20. Alam A, Golovliov I, Javed E, Kumar R, Ádén J, Sjöstedt A (2020) Dissociation between the critical role of ClpB of *Francisella tularensis* for the heat shock response and the DnaK interaction and its important role for efficient type VI secretion and bacterial virulence. *PLoS Pathog* 16:e1008466. <https://doi.org/10.1371/journal.ppat.1008466>
  21. Chen M, Li L-P, Wang R, Liang W-W, Huang Y, Li J, Lei A-Y, Huang W-Y, Gan X (2012) PCR detection and PFGE genotype analyses of streptococcal clinical isolates from tilapia in China. *Vet Microbiol* 159:526–530. <https://doi.org/10.1016/j.vetmic.2012.04.035>
  22. Takamatsu D, Osaki M, Sekizaki T (2001) Thermosensitive suicide vectors for gene replacement in *Streptococcus suis*. *Plasmid* 46:140–148. <https://doi.org/10.1006/plas.2001.1532>
  23. Wang Y, Wang Q, Zeng W, Yin J, Li Y, Ren Y, Shi C, Bergmann SM, Zhu X (2018) Establishment and characterization of a cell line from tilapia brain for detection of tilapia lake virus. *J Fish Dis* 41:1803–1809. <https://doi.org/10.1111/jfd.12889>
  24. Robert X, Gouet P (2014) Deciphering key features in protein structures with the new ENDscript server. *Nucleic Acids Res* 42:W320–324. <https://doi.org/10.1093/nar/gku316>
  25. Laskowski RA, MacArthur MW, Moss DS, Thornton JM (1993) PROCHECK: a program to check the stereochemical quality of protein structures. *J Appl Crystallogr* 264:585–602. <https://doi.org/10.1107/s0021889892009944>
  26. Kannan TR, Musatovova O, Gowda P, Baseman JB (2008) Characterization of a unique ClpB protein of *Mycoplasma pneumoniae* and its impact on growth. *Infect Immun* 76:5082–5092. <https://doi.org/10.1128/iai.00698-08>
  27. Hammerschmidt S, Wolff S, Hocke A, Rosseau S, Müller E, Rohde M (2005) Illustration of pneumococcal polysaccharide capsule during adherence and invasion of epithelial cells. *Infect Immun* 73:4653–4667. <https://doi.org/10.1128/iai.73.8.4653-4667.2005>
  28. Roy S, Zhu Y, Ma J, Roy AC, Zhang Y, Zhong X, Pan Z, Yao H (2019) Role of ClpX and ClpP in *Streptococcus suis* serotype 2 stress tolerance and virulence. *Microbiol Res* 223–225:99–109. <https://doi.org/10.1016/j.micres.2019.04.003>
  29. Zhu H, Zhou J, Ni Y, Yu Z, Mao A, Hu Y, Wang W, Zhang X, Wen L, Li B, Wang X, Yu Y, Lv L, Guo R, Lu C, He K (2014) Contribution of eukaryotic-type serine/threonine kinase to stress response and virulence of *Streptococcus suis*. *PLoS ONE* 9:e91971. <https://doi.org/10.1371/journal.pone.0091971>
  30. Liu H, Fu H, Jiang X, Liao X, Yue M, Li X, Fang W (2019) PrsA contributes to *Streptococcus suis* serotype 2 pathogenicity by modulating secretion of selected virulence factors. *Vet Microbiol* 236:108375. <https://doi.org/10.1016/j.vetmic.2019.07.027>
  31. Tang H, Zhang Q, Han W, Wang Z, Pang S, Zhu H, Tan K, Liu X, Langford PR, Huang Q, Zhou R, Li L (2022) Identification of FtpA, a Dps-like protein involved in anti-oxidative stress and virulence in *Actinobacillus pleuropneumoniae*. *J Bacteriol* 204:e0032621. <https://doi.org/10.1128/jb.00326-21>
  32. Jiang X, Yang Y, Zhu L, Gu Y, Shen H, Shan Y, Li X, Wu J, Fang W (2016) Live *Streptococcus suis* type 5 strain XS045 provides cross-protection against infection by strains of types 2 and 9. *Vaccine* 34:6529–6538. <https://doi.org/10.1016/j.vaccine.2016.05.003>
  33. Cui ZW, Zhang XY, Wu CS, Zhang YA, Zhou Y, Zhang XJ (2020) Membrane IgM+ plasma cells in grass carp (*Ctenopharyngodon idella*): Insights into the conserved evolution of IgM+ plasma cells in vertebrates. *Dev Comp Immunol* 106:103613. <https://doi.org/10.1016/j.dci.2020.103613>
  34. Wang J, Wu CS, Hu YZ, Yang L, Zhang XJ, Zhang YA (2022) Plasmablasts induced by chitosan oligosaccharide secrete natural IgM to enhance the humoral immunity in grass carp. *Carbohydr Polym* 281:119073. <https://doi.org/10.1016/j.carbpol.2021.119073>
  35. Livak KJ, Schmittgen TD (2001) Analysis of relative gene expression data using real-time quantitative PCR and the 2<sup>-</sup>ΔΔCT method. *Methods* 25:402–408. <https://doi.org/10.1006/meth.2001.1262>
  36. Carroni M, Kummer E, Oguchi Y, Wendler P, Clare DK, Sinning I, Kopp J, Mogk A, Bukau B, Saibil HR (2014) Head-to-tail interactions of the coiled-coil domains regulate ClpB activity and cooperation with Hsp70 in protein disaggregation. *Elife* 3:e02481. <https://doi.org/10.7554/elife.02481>
  37. Rosenzweig R, Farber P, Velyvis A, Rennella E, Latham MP, Kay LE (2015) ClpB N-terminal domain plays a regulatory role in protein disaggregation. *Proc Natl Acad Sci USA* 112:E6872–6881. <https://doi.org/10.1073/pnas.1512783112>
  38. Squires CL, Pedersen S, Ross BM, Squires C (1991) ClpB is the *Escherichia coli* heat shock protein F84.1. *J Bacteriol* 173:4254–4262. <https://doi.org/10.1128/jb.173.14.4254-4262.1991>
  39. Wang R, Li L, Huang Y, Luo F, Liang W, Gan X, Huang T, Lei A, Chen M, Chen L (2015) Comparative genome analysis identifies two large deletions in the genome of highly-passaged attenuated *Streptococcus agalactiae* strain YM001 compared to the parental pathogenic strain HN016. *BMC Genomics* 4:897. <https://doi.org/10.1186/s12864-015-2026-y>
  40. Schirmer EC, Glover JR, Singer MA, Lindquist S (1996) HSP100/Clp proteins: a common mechanism explains diverse functions. *Trends Biochem Sci* 21:289–296
  41. de Oliveira NEM, Abranches J, Gaca AO, Laport MS, Damaso CR, Bastos McDcf, Lemos JA, Giambiagi-deMarval M (2011) clpB, a class III heat-shock gene regulated by CtsR, is involved in thermotolerance and virulence of *Enterococcus faecalis*. *Microbiol* 157:656–665. <https://doi.org/10.1099/mic.0.041897-0>

42. Nag S, Das S, Chaudhuri K (2005) In vivo induced clpB1 gene of *Vibrio cholerae* is involved in different stress responses and affects in vivo cholera toxin production. *Biochem Biophys Res Commun* 331:1365–1373. <https://doi.org/10.1016/j.bbrc.2005.04.052>
43. Sangpuui L, Dixit SK, Kumawat M, Apoorva S, Kumar M, Kappala D, Goswami TK, Mahawar M (2018) Comparative roles of clpA and clpB in the survival of *S. Typhimurium* under stress and virulence in poultry. *Sci Rep* 8:4481. <https://doi.org/10.1038/s41598-018-22670-6>
44. Harnagel A, Lopez Quezada L, Park SW, Baranowski C, Kieser K, Jiang X, Roberts J, Vaubourgeix J, Yang A, Nelson B, Fay A, Rubin E, Ehrt S, Nathan C, Lupoli T (2020) Nonredundant functions of *Mycobacterium tuberculosis* chaperones promote survival under stress. *Mol Microbiol* 115:272–289. <https://doi.org/10.1111/mmi.14615>
45. Kayansamruaj P, Pirarat N, Katagiri T, Hirono I, Rodkhum C (2014) Molecular characterization and virulence gene profiling of pathogenic *Streptococcus agalactiae* populations from tilapia (*Oreochromis* sp.) farms in Thailand. *J Vet Diagn Invest* 26:488–495. <https://doi.org/10.1177/1040638714534237>
46. Mian GF, Godoy DT, Leal CAG, Yuhara TY, Costa GM, Figueiredo HCP (2008) Aspects of the natural history and virulence of *S. agalactiae* infection in Nile tilapia. *Vet Microbiol* 136:180–183. <https://doi.org/10.1016/j.vetmic.2008.10.016>
47. Rodkhum C, Kayansamruaj P, Pirarat N (2011) Effect of water temperature on susceptibility to *Streptococcus agalactiae* serotype Ia infection in Nile Tilapia (*Oreochromis niloticus*). *Thai J Vet Med* 41:309–314
48. Le Morvan C, Troutaud D, Deschaux P (1998) Differential effects of temperature on specific and nonspecific immune defences in fish. *J Exp Biol* 201:165–168. <https://doi.org/10.1242/jeb.201.2.165>
49. Makrinos DL, Bowden TJ (2016) Natural environmental impacts on teleost immune function. *Fish Shellfish Immunol* 53:50–57. <https://doi.org/10.1016/j.fsi.2016.03.008>
50. Nguyen CT, Park S-S, Rhee D-K (2015) Stress responses in *Streptococcus* species and their effects on the host. *J Microbiol* 53:741–749. <https://doi.org/10.1007/s12275-015-5432-6>
51. Guo C-M, Chen R-R, Kalhoro DH, Wang Z-F, Liu G-J, Lu C-P, Liu Y-J (2014) Identification of genes preferentially expressed by highly virulent piscine *Streptococcus agalactiae* upon interaction with macrophages. *PLoS ONE* 9:e87980. <https://doi.org/10.1371/journal.pone.0087980>
52. Dong X, Chao Y, Zhou Y, Zhou R, Zhang W, Fischetti VA, Wang X, Feng Y, Li J (2021) The global emergence of a novel *Streptococcus suis* clade associated with human infections. *EMBO Mol Med* 13:e13810. <https://doi.org/10.15252/emmm.202013810>
53. Gottschalk M, Segura M (2000) The pathogenesis of the meningitis caused by *Streptococcus suis*: the unresolved questions. *Vet Microbiol* 76:259–272. [https://doi.org/10.1016/s0378-1135\(00\)00250-9](https://doi.org/10.1016/s0378-1135(00)00250-9)
54. Isla A, Haussmann D, Vera T, Kausel G, Figueroa J (2014) Identification of the clpB and bipA genes and an evaluation of their expression as related to intracellular survival for the bacterial pathogen *Piscirickettsia salmonis*. *Vet Microbiol* 173:390–394. <https://doi.org/10.1016/j.vetmic.2014.08.014>
55. Razzak LA, Ambak MA, Hassan M, Sheriff SM, Nadirah M, Draman AS, Wahab W, Nurhafizah WWI, Alia SA, Jabar A, Najiah M (2017) Molecular identification and histopathological study of natural *Streptococcus agalactiae* infection in hybrid tilapia (*Oreochromis niloticus*). *Vet World* 10:101–111. <https://doi.org/10.14202/vetworld.2017.101-111>
56. Yuan L, Rodrigues PH, Bélanger M, Dunn W, Progukske-Fox A (2007) The *Porphyromonas gingivalis* clpB gene is involved in cellular invasion in vitro and virulence in vivo. *FEMS Immunol Med Microbiol* 51:388–398. <https://doi.org/10.1111/j.1574-695x.2007.00326.x>
57. Goncheva MI, Chin D, Heinrichs DE (2022) Nucleotide biosynthesis: the base of bacterial pathogenesis. *Trend Microbiol* 30:793–804. <https://doi.org/10.1016/j.tim.2021.12.007>
58. Samant S, Lee H, Ghassemi M, Chen J, Cook JL, Mankin AS, Neyfakh AA (2008) Nucleotide biosynthesis is critical for growth of bacteria in human blood. *PLoS Pathog* 4:e37. <https://doi.org/10.1371/journal.ppat.0040037>
59. Cook LCC, Hu H, Maienschein-Cline M, Federle MJ (2018) A vaginal tract signal detected by the group B *Streptococcus* SaeRS system elicits transcriptomic changes and enhances murine colonization. *Infect Immun* 86:e00762–e817. <https://doi.org/10.1128/iai.00762-17>
60. Lanotte P, Perivier M, Haguenoer E, Mereghetti L, Burucoa C, Claverol S, Atanassov C (2013) Proteomic biomarkers associated with *Streptococcus agalactiae* invasive genogroups. *PLoS ONE* 8:e54393. <https://doi.org/10.1371/journal.pone.0054393>
61. Prágai Z, Harwood CR (2002) Regulatory interactions between the Pho and sigma (B)-dependent general stress regulons of *Bacillus subtilis*. *Microbiol* 148:1593–1602. <https://doi.org/10.1099/00221287-148-5-1593>
62. Park S-H, Lee H-W, Cao W (2010) Screening of nitrosative stress resistance genes in *Coxiella burnetii*: Involvement of nucleotide excision repair. *Microb Pathog* 49:323–329. <https://doi.org/10.1016/j.micpath.2010.08.001>
63. Ma Q, Pan Y, Chen Y, Yu S, Huang J, Liu Y, Gong T, Zou J, Li Y (2021) Acetylation of glucosyltransferases regulates *Streptococcus mutans* biofilm formation and virulence. *PLoS Pathog* 13:e0201322. <https://doi.org/10.1371/journal.ppat.1010134>
64. Ma Q, Pan Y, Chen Y, Yu S, Huang J, Liu Y, Gong T, Zhang Q, Sun Q, Zou J, Li Y (2022) Acetylation of lactate dehydrogenase negatively regulates the acidogenicity of *Streptococcus mutans*. *MBio* 13:e0201322. <https://doi.org/10.1128/mbio.02013-22>

## Publisher's Note

Springer Nature remains neutral with regard to jurisdictional claims in published maps and institutional affiliations.