



**HAL**  
open science

# Diet Acts on Detection of Female Sex Pheromones in a Male Moth

Evan Force, Christelle Monsempes, Matthieu Dacher, Stéphane Debernard

► **To cite this version:**

Evan Force, Christelle Monsempes, Matthieu Dacher, Stéphane Debernard. Diet Acts on Detection of Female Sex Pheromones in a Male Moth. Club of Invertebrate Neurobiology, May 2024, Gif-Sur-Yvette, France. 10.13140/RG.2.2.34208.19207 . hal-04579683

**HAL Id: hal-04579683**

**<https://hal.science/hal-04579683>**

Submitted on 17 May 2024

**HAL** is a multi-disciplinary open access archive for the deposit and dissemination of scientific research documents, whether they are published or not. The documents may come from teaching and research institutions in France or abroad, or from public or private research centers.

L'archive ouverte pluridisciplinaire **HAL**, est destinée au dépôt et à la diffusion de documents scientifiques de niveau recherche, publiés ou non, émanant des établissements d'enseignement et de recherche français ou étrangers, des laboratoires publics ou privés.



Distributed under a Creative Commons Attribution - NonCommercial - NoDerivatives 4.0 International License

Evan Force<sup>1,2</sup>, Christelle Monsempe<sup>2</sup>, Matthieu Dacher<sup>1,2</sup> & Stéphane Debernard<sup>1</sup>

<sup>1</sup> Sorbonne Université, Université Paris-Est Créteil, INRAE, CNRS, IRD - Institute for Ecology and Environmental Sciences of Paris, iEES Paris, F-75005, Paris, France

<sup>2</sup> Sorbonne Université, Université Paris-Est Créteil, INRAE, CNRS, IRD - Institute for Ecology and Environmental Sciences of Paris, iEES Paris, F-78026, Versailles, France

Contact: [evan.force@inrae.fr](mailto:evan.force@inrae.fr)

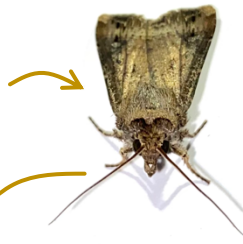
## 1. Introduction

In most insects, sex-partner meeting relies on males' attraction by a mixture of species-specific odorants emitted by females: **sex pheromones** [1]. The pheromonal compounds are recognized by specific **olfactory receptors** (ORs) located in the membrane of dedicated **olfactory receptor neurons** (Phe-ORNs) inside **antennal sensilla** [2]. The pheromonal signal is then integrated into **olfactory centers**, ultimately leading to **sexual behavior**. In the **male moth *Agrotis ipsilon***, **sex pheromones detection** elicits to **oriented flight** towards the female [3]. As **diet impacts the male's sexual behavior** in this species, we suggested that diet might also affect sex pheromones detection. To test this hypothesis, we examined the effect of different diets on both antennal response by electroantennography (EAG) and Phe-ORN activity by single sensillum recordings (SSR).

## 2. Materials & Methods

Different *ad libitum* diets from the first day after emergence (D1):

- water;
- sucrose (suc.);
- sucrose with glucose and fructose (suc. + fru. + glu.);
- NaCl (Na);
- sucrose with glucose, fructose, and NaCl (suc. + fru. + glu. + Na).



Sex pheromone detection's studies in 5-day-old (D5) male moth with:

- isolated antenna in electroantennography
- pheromonal neuron in single sensillum recording

## 4. Conclusion & Perspectives

Diet rich in various sugars (sucrose + fructose + glucose) with sodium has a positive impact on sex pheromones detection in D5 male *A. ipsilon*.

In *Drosophila melanogaster*, juvenile hormone (JH) is involved in the development of male sexual behavior by upregulating the antennal expression of a pheromonal receptor [4].

In several insects, diet modulates both biosynthesis and action of JH (Fig. 4).

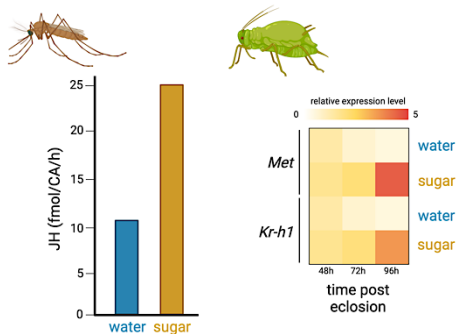


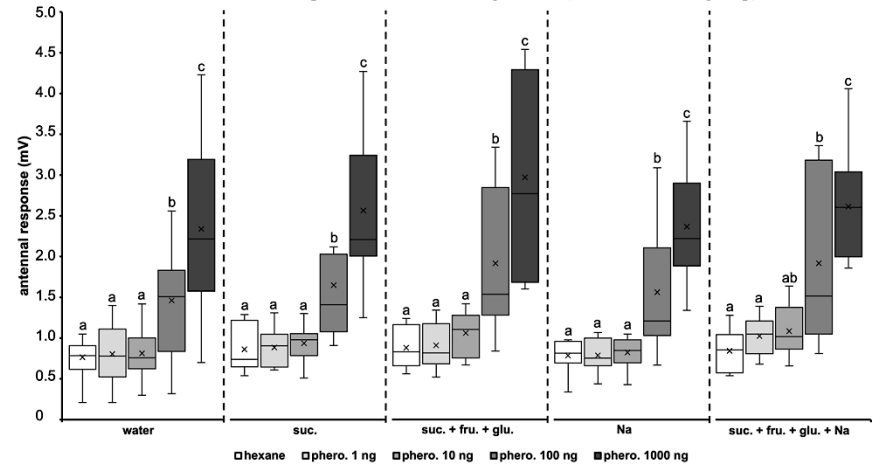
Figure 4. Diet effects on JH biosynthesis and JH signaling pathway (Met is JH receptor, Kr-h1 is a transcriptional factor).

In male *A. ipsilon*, *AipsOR3* is specific for Z7:12Ac pheromonal molecule [5].

→ Would diet impact *AipsOR3* expression in Phe-ORNs through JH and/or actors of JH signaling pathway?

## 3. Results

Figure 1. Antennal response after stimulation with different doses of sex pheromones according to diet (n = 10 for each group).



Various sugars and Na diet decreases the sex pheromone sensitivity threshold (Fig. 1).

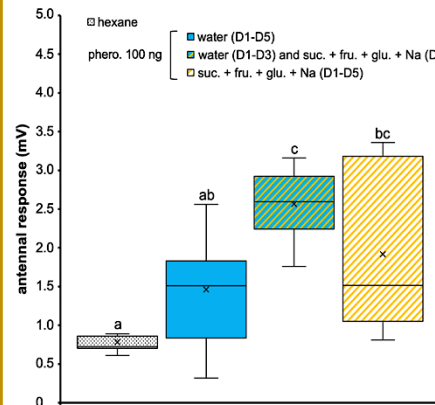
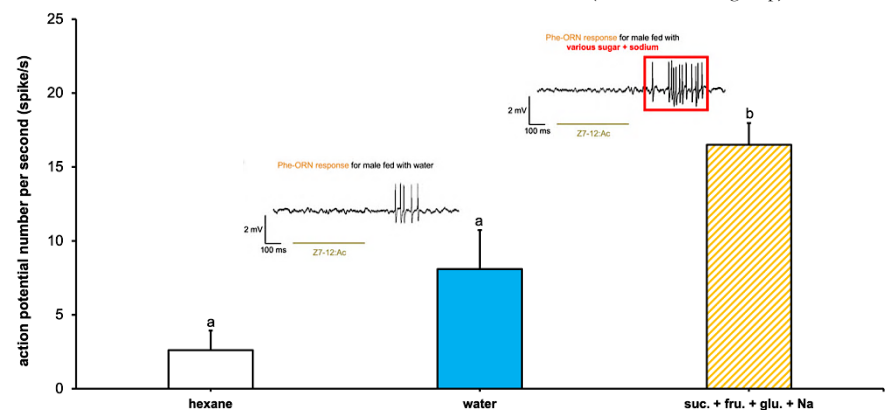


Figure 2. Antennal response after stimulation with 100 ng of sex pheromones for fasted males from D1 to D3 which we then fed with various sugar and sodium until D5 (n = 10 for each group).

Various sugars combined with Na raise the antennal response to female sex pheromones immediately after consumption (Fig. 2).

Figure 3. Electrical activity of Phe-ORN after stimulation with 10 ng Z7:12:Ac (a pheromonal compound) for D5 males fed water or fed with various sugars plus sodium. Values correspond to mean ± SEM (n = 10 for each group).



A diet composed of various sugars with Na increases the response of Phe-ORNs to Z7:12:Ac pheromonal compound emitted by female (Fig. 3).

## References

- Cardé, R.T., Baker, T.C. 1984. *Sexual Communication with Pheromones*. Springer, Boston, MA.
- Fleischer, J., Krieger, J., 2018. *Front Cell Neurosci.* 12, 425.
- Deisig, N., Dupuy, F., Anton, S., Renou, M., 2014. *Insects* 5, 399
- Lin, H.-H., Cao, D.-S., Sethi, S., Zeng, Z., Chin, J.S.R., Chakraborty, T.S., Shepherd, A.K., Nguyen, C.A., et al., 2016. *Neuron* 90, 1272–1285.
- Vandroux, P., Li, Z., Capoduro, R., François, M.-C., Renou, M., Montagné, N., Jacquin-Joly, E., 2022. *Front. Ecol. Evol.* 10.

## Acknowledgements

We thank our technical colleagues from laboratory for rearing the animals used in the experiments.

