



HAL
open science

Nothochodaeus lycaon, a new species from Palawan Island, Philippines (Coleoptera: Scarabaeoidea: Ochodaeidae)

Jean-Bernard Huchet

► **To cite this version:**

Jean-Bernard Huchet. Nothochodaeus lycaon, a new species from Palawan Island, Philippines (Coleoptera: Scarabaeoidea: Ochodaeidae). Faunitaxys, 2024, 12 (23), pp.1-4. 10.57800/faunitaxys-12(23). hal-04576846

HAL Id: hal-04576846

<https://hal.science/hal-04576846>

Submitted on 15 May 2024

HAL is a multi-disciplinary open access archive for the deposit and dissemination of scientific research documents, whether they are published or not. The documents may come from teaching and research institutions in France or abroad, or from public or private research centers.

L'archive ouverte pluridisciplinaire **HAL**, est destinée au dépôt et à la diffusion de documents scientifiques de niveau recherche, publiés ou non, émanant des établissements d'enseignement et de recherche français ou étrangers, des laboratoires publics ou privés.



Distributed under a Creative Commons Attribution - NonCommercial - NoDerivatives 4.0 International License

Faunitaxys

*Revue de Faunistique, Taxonomie et Systématique
morphologique et moléculaire*



Volume 12
Numéro 23

Mai 2024

ISSN (Print) : 2269 - 6016
ISSN (Online) : 2970 - 4960
Dépôt légal : Mai 2024

Faunitaxys

*Revue de Faunistique, Taxonomie et Systématique
morphologique et moléculaire*

ZooBank : <https://zoobank.org/79A36B2E-F645-4F9A-AE2B-ED32CE6771CC>

Directeur de la publication, rédacteur, conception graphique et PAO:

Lionel Delaunay

Cette revue ne peut pas être vendue

Elle est distribuée par échange aux institutions (version papier)

et sur simple demande aux particuliers (format PDF)

à l'adresse suivante:

AFCFF (Association française de Cartographie de la Faune et de la Flore)

28, rue Voltaire, F- 42100 Saint Etienne

E-mail: faunitaxys.journal@gmail.com

Elle est disponible librement au téléchargement à partir du site:

<https://faunitaxys.fr/>

La parution de *Faunitaxys* est apériodique

Faunitaxys est indexé dans / *Faunitaxys* is indexed in:

- **Zoological Record**

Articles and nomenclatural novelties are referenced by:

- **ZooBank** (<https://zoobank.org>)

Online Archives:

- **HAL** (<https://hal.archives-ouvertes.fr>)

- **Internet Archive** (<https://archive.org>)

Imprimée sur les presses de SPEED COPIE, 6, rue Tréfilerie, F- 42100 Saint-Etienne

Imprimé le 08 05 2024

Nothochodaeus lycaon, a new species from Palawan Island, Philippines (Coleoptera: Scarabaeoidea: Ochodaeidae)

JEAN-BERNARD HUCHET

Muséum National d'Histoire Naturelle, ISYEB, UMR7205, MNHN, CNRS, EPHE, UPMC, Paris-Sorbonne, CP50, Entomologie, 45, rue Buffon, F-75005 Paris, France - jean-bernard.huchet@mnhn.fr

- ZooBank : <https://zoobank.org/AD63F3ED-5BCD-499C-8A10-DD29EA962CA4>

Keywords:

Coleoptera;
Scarabaeoidea;
Ochodaeidae;
Nothochodaeus;
Taxonomy;
new species;
Philippines.

Abstract. – *Nothochodaeus lycaon* n. sp. from Palawan Island, Philippines, is described, illustrated and compared with the most morphologically closely related species.

Huchet J-B., 2024. – *Nothochodaeus lycaon*, a new species from Palawan Island, Philippines (Coleoptera: Scarabaeoidea: Ochodaeidae). *Faunitaxys*, 12(23) : 1–4.

DOI: [https://doi.org/10.57800/faunitaxys-12\(23\)](https://doi.org/10.57800/faunitaxys-12(23))

ZooBank: <https://zoobank.org/02B9F442-6D42-4677-AF63-A85CBFE54671>

Received: 25/04/2024 – Revised: 30/04/2024 – Accepted: 01/05/2024

Introduction

Following my study of the Ochodaeidae of the Philippine archipelago (Huchet 2014a, 2014b, 2017, 2018, 2019, 2021), I describe here a new species of the genus *Nothochodaeus* Nikolajev, 2005 from Palawan, bringing the number of representatives of this genus on this island to three, all of which are endemic. The discovery of a new species of *Nothochodaeus* in Palawan highlights that the entomofauna of the archipelago, comprising almost 7,000 islands, is still very far from being known, and that many other islands would benefit from exploration and scientific investigation.

As previously reported (Huchet, 2021), the biogeographical history of Palawan is distinct from that of the other islands in the archipelago since, unlike the other Philippine islands, Palawan was temporally contiguous with Borneo when the sea level dropped repeatedly during the Pleistocene (Heaney 1985; Robles et al. 2015). As a consequence, the faunal component of Palawan shows more affinities with that of the great Sunda islands and insular Malaysia than with that of the other islands of the Philippine archipelago (Everett 1889; Dickerson 1928; Heaney 1985, 1986; Esselstyn et al. 2004). The apparent absence of representatives of the genus *Ceratochodaeus* Huchet, 2017 on Palawan, the best represented endemic genus on the other Philippine islands, underlines the distinction between the composition of the entomofauna of Palawan and that of the rest of the archipelago.

Materials and Methods

The specimen described in the frame of this study was compared with other Filipino, Indonesian and Malaysian species deposited in the Muséum national d'Histoire naturelle, Paris, France (MNHN), and in the author's private collection (CJBH).



Fig. 1. *Nothochodaeus lycaon* n. sp., ♂ holotype.

Reviewers:

Olivier Montreuil (UMR 7179, CNRS / Muséum national d'histoire naturelle, Paris, France) - Orcid: <https://orcid.org/0000-0003-2682-7594>

- ZooBank: <http://zoobank.org/5286C6DB-891A-49E0-8E96-8EAD084DC9F9>

Conrad P.D.T. Gillett (Museum of Natural History, University of Helsinki, Finland) - Orcid: <https://orcid.org/0000-0002-1487-4003>

- ZooBank: <http://zoobank.org/8868117F-CC13-4C56-8067-3FD3CC7F5D6F>



This is an open access article under the terms of the Creative Commons Attribution-NonCommercial-NoDerivs License, which permits use and distribution in any medium, provided the original work is properly cited, the use is non-commercial and no modifications or adaptations are made.

Copyright 2024 The Authors. *Faunitaxys* published by Lionel Delaunay on behalf of the AFCFF (Association française de Cartographie de la Faune et de la Flore).

Genitalia treatment. – After removal of the entire abdomen to avoid any damage of the genital parts and other informative features, the male genital apparatus was treated with 10% potassium hydroxide solution (KOH) to destroy and remove the unnecessary soft tissues. The cleaned genital parts were then placed in 10% acetic acid to neutralize the effects of the KOH, rinsed with ethanol, and stored in a small glycerol vial pinned under the specimen. Finally, the abdomen was returned to its original position and maintained in anatomical position using a small drop of hydrosoluble glue. Terminology of male genitalia follows Génier (2019).

Illustrations. – Digital images of the habitus and genital parts were taken at the Entomology Department (MNHN, Paris) with a Canon EOS 6D digital camera (MP-E 65 mm lens) mounted on a Kaiser RTx column. The z-stepper was controlled through the focus stacking software Helicon Remote 4.4.4w and images were processed using Helicon focus 8. The digital images were finally imported into Adobe Photoshop CC 2019 for post-processing, labeling and plate composition. To temporally stabilize male genital apparatus for photography, the aedeagus and genital segment (urite IX) were placed in a slide concavity containing a drop of K-Y®1 gel as described by Bameul (2001).

Taxonomic Treatment

Ochodaecidae Streubel, 1846: 960

Ochodaecinae Streubel, 1846: 960

Nothochodaecini Nikolajev, 2015: 25

Nothochodaeus Nikolajev, 2005: 219
[= *Notochodaeus* Nikolajev, 2005]

***Nothochodaeus lycaon* n. sp.**

(Fig. 1-8)

ZooBank: <https://zoobank.org/993B8E22-08EC-4806-9933-CFC2688B6A71>

Holotype, ♂ (CJBH), labeled:

a) rectangular, white paper, printed: “PHILIPPINES / Palawan, Roxas / X. 2023 / Local collector”;

b) rectangular, framed, white paper: “Coll. J.-B. Huchet”;

c) rectangular, red paper: “TYPE”;

d) red paper: “*Nothochodaeus lycaon* n. sp. / HOLOTYPE / J.-B. Huchet det. 2024”.

Genitalia stored in a small glycerol vial, pinned under the specimen. To ensure the perennality of this material, the holotype, currently in the author’s collection, is intended to be deposited at the Muséum national d’Histoire naturelle, Paris.

Diagnosis. – Body medium-sized, robust, convex, densely pubescent, uniformly black-brown, the head with a procurved “U” shaped raised carina distinctly tuberculate at both ends. The underside and legs are black; the antennae with scape and club dark-brown, the pedicel and funicle orange-yellow with each of the antennomeres darkened distally. The stridulatory peg is present.

Description of the holotype (Fig. 1-8)

Length. – 10.7 mm (from the apex of the mandibles to the apical part of tergite VIII).

Width. – 5.6 mm (greatest elytral width).

Head. – Transverse, sub-hexagonal in outline, entirely black, with the exception of a median longitudinal band, orange, extending from the frontoclypeal suture to the vertex. – *Frontoclypeal carina* strongly raised, in inverted flattened U-shape, ended on both sides by a well individualized blunt tubercle (Fig. 3-5); each tubercle flanked at its outer base by a distinct setiferous pore. – *Clypeus* trapezoidal in outline, strongly obliquely sloping forward, the anterior margin finely denticulated, the interval between these small denticles with an erect, medium-sized, brown-orange bristle. Posterior

declivity of clypeus relatively abrupt behind the carina, flanked on both sides by the frontoclypeal suture, barely perceptible, extending laterally up to the level of the anteromedial angle of the eye; frontal area distinctly concave between the eyes. Head shiny, the surface covered with coarse, tightly packed and partly contiguous setiferous granules. – *Labrum* transverse, dorsally convex, hyaline, long pubescent, strongly emarginate in the middle front, transversely split into two superimposed laminae in the middle front. – *Eyes* moderate in size, globose, strongly produced laterad; a series of long, distinctly distant bristles aligned at the inner edge of the eye. – *Mandibles* subequal, falciform, slightly concave dorsally; base of mandibles (in upper view) smooth and shiny on both sides of the clypeal membrane, the latter strongly sclerotized, subtrapezoidal, black, laterally with hyaline transparencies. – *Mentum* subquadrangular, weakly depressed in front, the disc with very fine, scaly punctation; a transverse median line of medium setiferous punctures; sides of the mentum smooth, shiny, lower than the disk and separated from it by a concave line of long bristles (Fig. 6). – *Labium* with 3-segmented palpi, 2nd palpomere densely pubescent on ventral side; distal palpomere distinctly smaller, fusiform and glabrous. – *Antenna* 10-segmented, dark-brown, with the exception of the funicle, brown-orange; antennal club shiny, dark-brown except for narrow whitish apical part.

Pronotum. – Uniformly dark-brown, transverse, strongly convex, entirely margined, distinctly emarginate behind the head with a thin hyaline membrane in front, the lateral edges and base fringed with setae; a distinct fovea in the middle of each side. – *Anterior angles* prominent, projecting forward, the posterior ones obtusely rounded. – *Pronotal surface* with a very dense punctation consisting of medium-sized setiferous rounded granules with orange-brown vertically erect setae; the punctation slightly scaly on either side of the base. A short median longitudinal furrow at base reaching the middle of the disc and fading forward.

Elytra. – Transverse, dull, pubescent, of the same color as the pronotum. Striae well-marked, relatively shallow, consisting of aligned sunken medium-size points separated by about 1-1.5× their diameter. – *Intervals* almost flat, punctation strong and dense, consisting of medium setose granules, the minute setae erected, distinctly darkened; the setae longer on both sides of the elytra and along the base, in front of the humeral callus. – *Juxta-sutural interstriae* depressed, sloping towards the suture, over a portion extending from the apex of the scutellum to the level of the apical declivity. – *Humeral callus* well marked. – *Scutellum* elongate, triangular in outline, the disc with a median longitudinal impression consisting of medium-sized, unevenly defined points.

Abdomen. – Entirely black, strongly convex with six visible ventrites (III–VIII). – *Surface* smooth, shiny, ventrites with minute setigerous tubercles along their front margin separated by about 4-5× their diameter; the disc with medium setae roughly aligned; ventrites VI–VIII densely pubescent. Tergite VIII (pygidium) entirely margined, brownish-black, pubescent, the punctation strong, almost scaly, made up of small, tightly packed, slightly convex granules. Tergite VII (propygidium) entirely black, with trapezoidal interlocking mechanism, the disc microreticulate with sparse punctures. Stridulatory apparatus (sternite VI) present.

Legs. – *Protibia* quadridentate externally, the median tooth (third) hardly developed, almost obsolete, the basal tooth spinose, pointed; inner apical angle of protibia with a short, acute pollex directed anteriorly. – *Femur* without accessory teeth, their surface with two parallel rows of setose punctures. Hind leg with basal tarsomere (I) both longer than upper metatibial spur and than tarsomeres II–V combined; tarsomeres II–V orange-coloured, the basal one, chestnut-brown. – *Onychium* entirely orange.

Genitalia (Fig. 7-8). – *Parameres* short, widely divergent apically. Internal sac with a single large, kidney-shaped endophallite at base (with the endophallus not being everted), finely serrated on the convex lateral side. – *Endophallus membrane* with two separate large areas comprising groups of spinules arranged in rows (Fig. 7). – *Genital segment* (urite IX) (Fig. 8).

Sexual dimorphism. – Unknown.

Etymology. – From Ancient Greek Λυκάων (Lukáōn, “Lycan”), the hyena-like African wild dog, in allusion to the similar longitudinal strip visible on the head and the large, round ears reminiscent of antennal clubs.

Distribution. – Only known from the type locality: Roxas, Palawan.

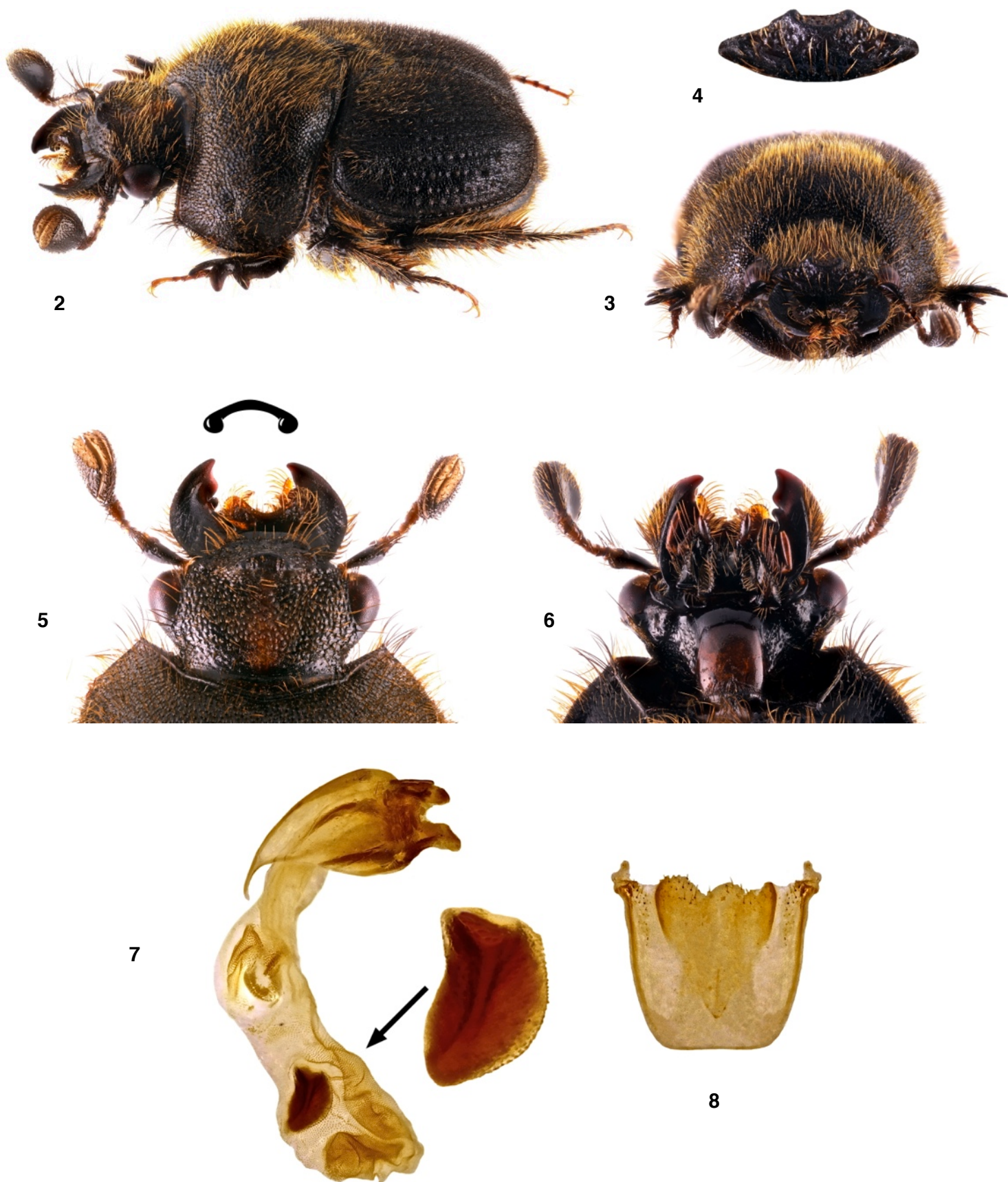


Fig. 2-8. *Nothochodaeus lycaon* n. sp., ♂ holotype.

2. Habitus, latero-dorsal view. 3. Head, frontal view. 4. Close-up of the clypeus in frontal view showing the raised U-shaped frontoclypeal carina and tubercles. 5. Head, dorsal view, inset illustrating the frontoclypeal carina and lateral tubercles. 6. Head, ventral view. 7. Aedeagus in lateral view, with the endophallus not everted, inset illustrating the large kidney-shaped endophallite. 8. Genital segment (urite IX) in dorsal view.

Remarks. – Interestingly, the three endemic Palawan *Nothochodaeus* are sympatric at Roxas, on the East coast of Palawan, North of Puerto Princesa.

Differential diagnosis. – Due to its cephalic structures and habitus coloration patterns, *N. lycaon* n. sp. cannot be confused with the two other congeneric species inhabiting Palawan, i.e. *N. minotaurus* Huchet, 2021 and *N. huxleyi* Huchet, 2021. It is easily distinguished from *N. minotaurus* by its normal-sized eyes (very large, subspherical and strongly prominent in *N. minotaurus*). In this regard, similar ocular hypertrophy can also be observed both in *N. mindanaoensis* Huchet, 2014 and *N. maruyamai* Ochi, Kon & Masumoto, 2013 respectively from Mindanao and the Malay peninsula which would appear to belong to the same species group. With the exception of the color patterns, which are very distinct between the two species, this new species is morphologically very close to *N. huxleyi* especially by the comparable cephalic ornamentation, including a short, U-shaped frontoclypeal carina. In *N. huxleyi*, the carina is however distinctly higher and the branches of the "U" more convex and closer together. Both male genitalia are also very distinct, the endophallus being unarmed in *N. huxleyi*, whereas *N. lycaon* n. sp. possesses a large endophallite (Fig. 7).

Acknowledgments

I would like to thank my colleagues Olivier Montreuil (MNHN, Paris) and Conrad P.D.T. Gillett (Finnish Museum of Natural History, University of Helsinki), for having reviewed this paper and for their very useful comments.

References

- Bameul F., 2001. – Intérêt du gel K-Y® pour l'observation de petites pièces anatomiques d'insectes. *Le Coléoptériste*, 43: 161-162.
- Dickerson R.E., 1928. – *Distribution of life in the Philippines*. Monograph, Bureau of Science, Manila, 2: 1-322, 42 pls.
- Esselstyn J.A., Widmann P. & Heaney L.R., 2004. – The mammals of Palawan Island, Philippines. *Proceedings of the Biological Society of Washington*, 117(3): 271-302.
- Everett A.H., 1889. – Remarks on the zoogeographical relationships of the island of Palawan and some adjacent islands. *Proceedings of the Zoological Society of London*, 1889: 220-228.
- Génier F., 2019. – Endophallites: a proposed neologism for naming the sclerotized elements of the insect endophallus (Arthropoda: Insecta). *Annales de la Société entomologique de France*, 55(6): 482-484.
- Heaney L.R., 1985. – Zoogeographic evidence for Middle and Late Pleistocene land bridges to the Philippine Islands. *Modern Quaternary Research in SE Asia*, 9: 127-143.
- Heaney L.R., 1986. – Biogeography of mammals in Southeast Asia: estimates of rates of colonization, extinction, and speciation. *Biological Journal of the Linnean Society*, 28: 127-165.
- Huchet J.B., 2014a. – Un nouveau *Nothochodaeus* Nikolajev des Philippines (Coleoptera, Scarabaeoidea, Ochodaeidae). *Coléoptères*, 20(6): 38-46.
- Huchet J.B., 2014b. – *Nothochodaeus mindanaoensis*, nouvelle espèce des Philippines (Coleoptera, Scarabaeoidea, Ochodaeidae). *Coléoptères*, 20(8): 57-64.
- Huchet J.B., 2017. – Un nouveau sous-genre et une nouvelle espèce d'Ochodaeidae des Philippines (Coleoptera, Scarabaeoidea). *Coléoptères*, 23(9): 93-101.
- Huchet J.B., 2018. – Une nouvelle espèce du sous-genre *Ceratochodaeus* Huchet, 2017, de Luzon, Philippines (Coleoptera, Scarabaeoidea, Ochodaeidae). *Coléoptères*, 24(7): 63-70.
- Huchet J.B., 2019. – New data on the taxonomy and distribution of Philippine Ochodaeidae and description of a new species from Central Visayas (Coleoptera: Scarabaeoidea). *Insecta Mundi*, 0722: 1-10.
- Huchet J.B., 2021. – Two new species of *Nothochodaeus* Nikolajev, 2005 from Palawan island, Philippines (Coleoptera: Scarabaeoidea: Ochodaeidae). *Insecta Mundi*, 0893: 1-12.
- Robles E., Piper P., Ochoa J., Lewis H., Paz V. & Ronquillo W., 2015. – Late Quaternary Sea-Level Changes and the Palaeohistory of Palawan Island, Philippines. *Journal of Island & Coastal Archaeology*, 10(1): 76-96.
- Vane-Wright D., 1990. – The Philippines. Key to the Biogeography of Wallacea (p. 19-34). In: W.J. Knight and J.D. Holloway (eds): *Insects and the rain forests of South East Asia (Wallacea)*. London, Royal Entomological Society of London.

Résumé

Huchet J.-B., 2024. – *Nothochodaeus lycaon*, nouvelle espèce de l'île de Palawan, Philippines (Coleoptera : Scarabaeoidea : Ochodaeidae). *Faunitaxys*, 12(23) : 1-4.

Nothochodaeus lycaon n. sp. de l'île de Palawan, Philippines, est décrite, illustrée et comparée aux espèces morphologiquement les plus proches.

Mots-clés. – Coleoptera, Scarabaeoidea, Ochodaeidae, *Nothochodaeus*, taxonomie, nouvelle espèce, Philippines.

Derniers articles publiés

Lapèze J. & Lopez-Vaamonde C., 2024. – Description de cinq nouvelles espèces de *Lycoderides* Sakakibara (Hemiptera: Auchenorrhyncha: Membracidae) de Guyane française. *Faunitaxys*, 12(3): 1-23. [https://doi.org/10.57800/faunitaxys-12\(3\)](https://doi.org/10.57800/faunitaxys-12(3))

Lourenço W. R., 2024. – A new scorpion species for the genus *Burmesescorpiops* Lourenço, 2016 from Cretaceous Burmese amber (Scorpiones: Palaeoscorpionidae: Archaeoscorpioninae). *Faunitaxys*, 12(4): 1-5. [https://doi.org/10.57800/faunitaxys-12\(4\)](https://doi.org/10.57800/faunitaxys-12(4))

Cumming R.T., Le Tirant S. & Chen H., 2024. – An additional Cretaceous *Ferriantenna* Cumming & Le Tirant, 2021 species with wildly exaggerated antennae (Hemiptera, Coreidae). *Faunitaxys*, 12(5): 1-6. [https://doi.org/10.57800/faunitaxys-12\(5\)](https://doi.org/10.57800/faunitaxys-12(5))

- Bezark L. G. & Santos-Silva A., 2024. – New World Lamiinae (Coleoptera, Cerambycidae): new species, new records, and notes. *Faunitaxys*, 12(4): 1 – 11. [https://doi.org/10.57800/faunitaxys-12\(6\)](https://doi.org/10.57800/faunitaxys-12(6))
- Lingafelter S. W., Touroult J. & Hodecek J., 2024. – A new species of *Eburia* (Coleoptera: Cerambycidae: Cerambycinae: Eburini) from the Dominican Republic. *Faunitaxys*, 12(7): 1 – 7. [https://doi.org/10.57800/faunitaxys-12\(7\)](https://doi.org/10.57800/faunitaxys-12(7))
- Bollino M. & Bouyer T., 2024. – A new subspecies of *Graphium bouyeri* Cipolla, 2021 and notes on taxonomic status of *Graphium biokoensis* Gauthier, 1984 (Lepidoptera, Papilionidae). *Faunitaxys*, 12(8): 1 – 6. [https://doi.org/10.57800/faunitaxys-12\(8\)](https://doi.org/10.57800/faunitaxys-12(8))
- Sadine S. E., Souilem Z., Chedad A., Chebihi B., Zebba R., Houhamdi M., Lourenço W. R. & Ythier E., 2024. – A new species of *Buthacus* Birula, 1908 from the Algerian Saharan Desert (Scorpiones: Buthidae). *Faunitaxys*, 12(9): 1 – 9. [https://doi.org/10.57800/faunitaxys-12\(9\)](https://doi.org/10.57800/faunitaxys-12(9))
- Dalens P.-H. & Robin F., 2024. – *Recchia hirticornis* (Klug, 1825) et description d'une nouvelle espèce de *Recchia* Lane, 1966 de Guyane (Coleoptera : Cerambycidae, Lamiinae). *Faunitaxys*, 12(10): 1 – 7. [https://doi.org/10.57800/faunitaxys-12\(10\)](https://doi.org/10.57800/faunitaxys-12(10))
- Robin F. & Dalens P.-H., 2024. – Deux nouvelles espèces de *Rosalba* Thomson, 1864 de Guyane (Coleoptera : Cerambycidae, Lamiinae). *Faunitaxys*, 12(11): 1 – 6. [https://doi.org/10.57800/faunitaxys-12\(11\)](https://doi.org/10.57800/faunitaxys-12(11))
- Gouverneur X., 2024. – Description d'une nouvelle espèce du genre *Mimapatellarthron* Breuning, 1940 du Vietnam (Coleoptera, Cerambycidae). *Faunitaxys*, 12(12): 1 – 3. [https://doi.org/10.57800/faunitaxys-12\(12\)](https://doi.org/10.57800/faunitaxys-12(12))
- Lourenço W. R. & Velten J., 2024. – An exceptional new genus of fossil scorpion from Burmese Cretaceous amber belonging to the family Palaeoburmesebuthidae Lourenço, 2015. *Faunitaxys*, 12(13): 1 – 7. [https://doi.org/10.57800/faunitaxys-12\(13\)](https://doi.org/10.57800/faunitaxys-12(13))
- Gouverneur X. & Guérard P., 2024. – Description d'une nouvelle espèce du genre *Stenhomalus* White, 1855 du Laos (Coleoptera, Cerambycidae, Oabriini). *Faunitaxys*, 12(14): 1 – 3. [https://doi.org/10.57800/faunitaxys-12\(14\)](https://doi.org/10.57800/faunitaxys-12(14))
- Gouverneur X., 2024. – Description d'une nouvelle espèce du genre *Margites* Gahan, 1891 du Laos (Coleoptera, Cerambycidae, Cerambycini). *Faunitaxys*, 12(15): 1 – 3. [https://doi.org/10.57800/faunitaxys-12\(15\)](https://doi.org/10.57800/faunitaxys-12(15))
- Gouverneur X., 2024. – Description d'une nouvelle espèce du genre *Glenida* Gahan, 1888 (Coleoptera : Cerambycidae) du Vietnam. *Faunitaxys*, 12(16): 1 – 7. [https://doi.org/10.57800/faunitaxys-12\(16\)](https://doi.org/10.57800/faunitaxys-12(16))
- Gerstmeier R., 2024. – *Phloiocopus bimaculatus* sp. n., a new apterous species from Somalia (Coleoptera, Cleridae, Clerinae). *Faunitaxys*, 12(17): 1 – 3. [https://doi.org/10.57800/faunitaxys-12\(17\)](https://doi.org/10.57800/faunitaxys-12(17))
- Wang F.-L., 2024. – A new species of the genus *Dedalopterus* Sabatinelli & Pontuale, 1998 from China (Coleoptera, Scarabaeidae, Melolonthinae). *Faunitaxys*, 12(18): 1 – 5. [https://doi.org/10.57800/faunitaxys-12\(18\)](https://doi.org/10.57800/faunitaxys-12(18))
- Ythier E., 2024. – A new high-altitude scorpion species of the genus *Ananteris* Thorell, 1891 (Scorpiones: Ananteridae) from the Pico da Neblina, Brazil. *Faunitaxys*, 12(19): 1 – 9. [https://doi.org/10.57800/faunitaxys-12\(19\)](https://doi.org/10.57800/faunitaxys-12(19))
- Keith D., 2024. – Description de deux espèces nouvelles du genre *Miridiba* Reitter, 1902 du Vietnam (Coleoptera: Scarabaeidae, Melolonthinae, Rhizotrogini). *Faunitaxys*, 12(20): 1 – 6. [https://doi.org/10.57800/faunitaxys-12\(20\)](https://doi.org/10.57800/faunitaxys-12(20))
- Deslisle G. & Plante É., 2024. – Une nouvelle sous-espèce d'*Ornithoptera* (*O.*) *priamus* (Linnaeus, 1758) découverte sur l'île de Gorong, Moluques, Indonésie (Lepidoptera, Papilionidae, Troidini). *Faunitaxys*, 12(21): 1 – 19. [https://doi.org/10.57800/faunitaxys-12\(21\)](https://doi.org/10.57800/faunitaxys-12(21))
- Vives E. & Trócoli S., 2024. – Una nueva especie de *Pseudochoeromorpha* Breuning, 1936 de Sulawesi, Indonesia (Coleoptera, Cerambycidae: Lamiinae). *Faunitaxys*, 12(22) : 1 – 3. [https://doi.org/10.57800/faunitaxys-12\(22\)](https://doi.org/10.57800/faunitaxys-12(22))

Faunitaxys est échangée avec les revues suivantes (« print versions ») :

- Annali del Museo Civico di Storia Naturale G. Doria (Italie)
- Boletín de la Asociación española de Entomología (Espagne)
- Boletín de la Sociedad Andaluza de Entomología (Espagne)
- Bollettino del Museo di Storia Naturale di Venezia (Italie)
- Bulletin de la Société linnéenne de Lyon (France)
- Bulletin of Insectology (Italie)
- Heteropterus Rev. Entomol. (Espagne)
- Israel Journal of Entomology (Israël)
- Klapalekiana (République Tchèque)
- Koleopterologische Rundschau (Allemagne)
- Memor del Museo Civico di Storia Naturale di Verona (Italie)
- Nova Supplementa Entomologica (Allemagne)
- Proceedings of the Entomological Society of Washington (USA)
- Revue suisse de Zoologie (Suisse)
- Spixiana (Allemagne)
- Stuttgarter Beiträge zur Naturkunde A, Biologie (Allemagne)
- Zoosystematica Rossica (Russie)

Faunitaxys

Volume 12, Numéro 23, Mai 2024

SOMMAIRE

Nothochodaeus lycaon, nouvelle espèce de l'île de Palawan, Philippines (Coleoptera : Scarabaeoidea : Ochodaeidae).

Jean-Bernard Huchet 1 – 4

CONTENTS

Nothochodaeus lycaon, a new species from Palawan Island, Philippines (Coleoptera: Scarabaeoidea: Ochodaeidae).

Jean-Bernard Huchet 1 – 4



Illustration de la couverture :

Old map of The Philippines, Moluccas and Sunda Islands.

Crédits :

Jean-Bernard Huchet : Fig. 1-8.

Sr. Sanson d'Abbeville, Geographer to the King, 1654 : Couverture.