



HAL
open science

Prevalence of chronic kidney disease in France: methodological considerations and pitfalls with the use of Health claims databases

Cécile Couchoud, Maxime Raffray, Mathilde Lassalle, Zhanibek Duisenbekov,
Olivier Moranne, Marie Erbault, Helene Lazareth, Cyrielle Parmentier,
Fitsum Guebre Egziabher, Aghilès Hamroun, et al.

► **To cite this version:**

Cécile Couchoud, Maxime Raffray, Mathilde Lassalle, Zhanibek Duisenbekov, Olivier Moranne, et al..
Prevalence of chronic kidney disease in France: methodological considerations and pitfalls with the use
of Health claims databases. *Clinical Kidney Journal*, 2024, 14 (1), pp.sfae117. 10.1093/ckj/sfae117 .
hal-04576173

HAL Id: hal-04576173

<https://hal.science/hal-04576173>

Submitted on 15 May 2024

HAL is a multi-disciplinary open access archive for the deposit and dissemination of scientific research documents, whether they are published or not. The documents may come from teaching and research institutions in France or abroad, or from public or private research centers.

L'archive ouverte pluridisciplinaire **HAL**, est destinée au dépôt et à la diffusion de documents scientifiques de niveau recherche, publiés ou non, émanant des établissements d'enseignement et de recherche français ou étrangers, des laboratoires publics ou privés.



HAL
open science

Prevalence of chronic kidney disease in France: methodological considerations and pitfalls with the use of Health claims databases

Cécile Couchoud, Maxime Raffray, Mathilde Lassalle, Zhanibek Duisenbekov,
Olivier Moranne, Marie Erbault, Hélène Lazareth, Cyrielle Parmentier,
Fitsum Guebre-Egziabher, Aghiles Hamroun, et al.

► To cite this version:

Cécile Couchoud, Maxime Raffray, Mathilde Lassalle, Zhanibek Duisenbekov, Olivier Moranne, et al..
Prevalence of chronic kidney disease in France: methodological considerations and pitfalls with the
use of Health claims databases. *Clinical Kidney Journal*, 2024, 14 (1), pp.9503. 10.1093/ckj/sfae117 .
hal-04566697

HAL Id: hal-04566697

<https://hal.science/hal-04566697>

Submitted on 2 May 2024

HAL is a multi-disciplinary open access archive for the deposit and dissemination of scientific research documents, whether they are published or not. The documents may come from teaching and research institutions in France or abroad, or from public or private research centers.

L'archive ouverte pluridisciplinaire **HAL**, est destinée au dépôt et à la diffusion de documents scientifiques de niveau recherche, publiés ou non, émanant des établissements d'enseignement et de recherche français ou étrangers, des laboratoires publics ou privés.

Prevalence of chronic kidney disease in France: methodological considerations and pitfalls with the use of Health claims databases

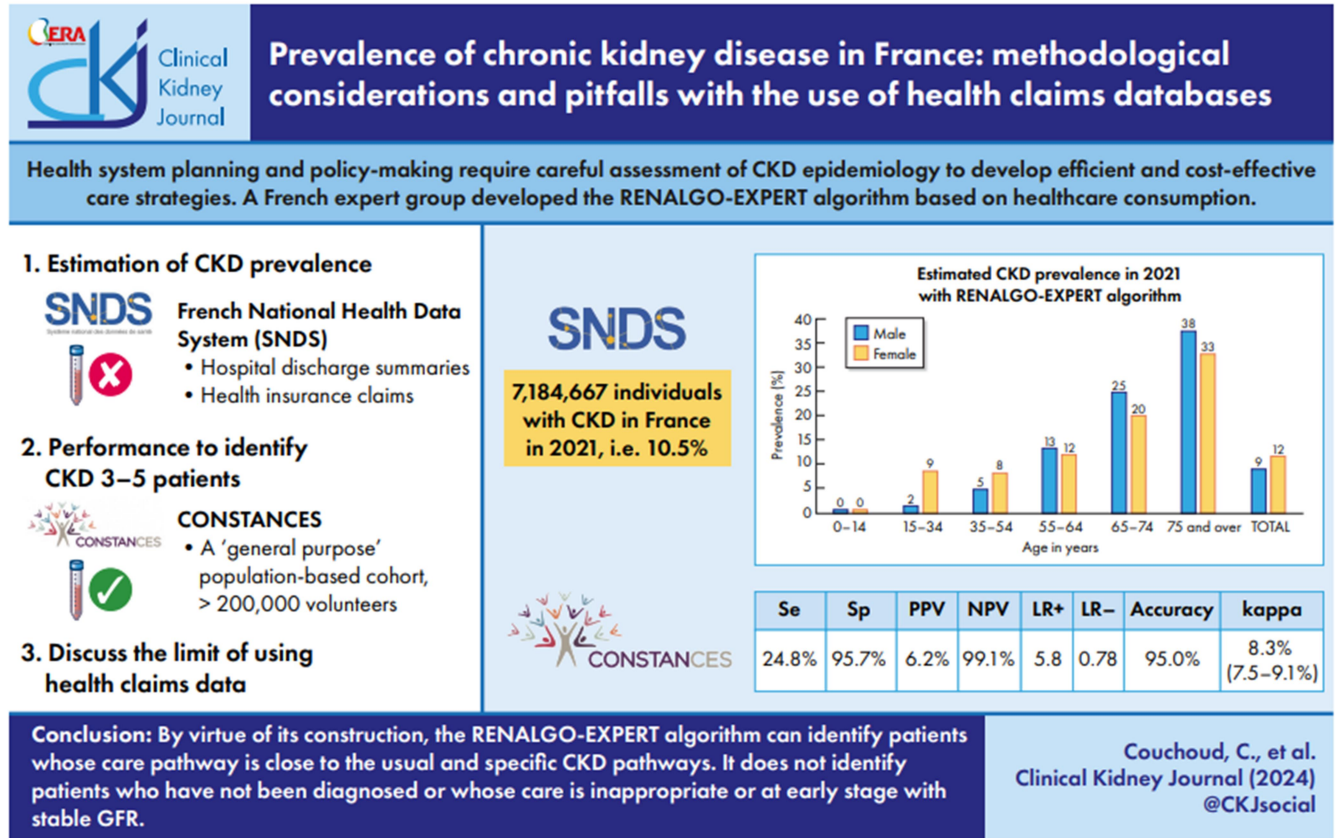
Cécile COUCHOUD¹, Maxime RAFFRAY², Mathilde LASSALLE¹, Zhanibek DUISENBKOV¹, Olivier MORANNE³, Marie ERBAULT⁴, Hélène LAZARETH⁵, Cyrielle PARMENTIER⁶, Fitsum GUEBRE-EGZIABHER⁷, Aghiles HAMROUN⁸, Marie METZGER⁹, Imene MANSOURI¹⁰, Marcel GOLDBERG¹¹, Maris ZINS¹¹, Sahar BAYAT-MAKOEI², Sofiane KAB¹¹, on behalf of the group REDSIAM « kidney disease »

1. Réseau Epidémiologie et Information en Néphrologie, Agence de la biomédecine, Saint-Denis-La-Plaine, France
2. Univ Rennes, EHESP, CNRS, Inserm, Arènes - UMR 6051, RSMS (Recherche sur les Services et Management en Santé) - U 1309 – Rennes, France
3. Service Néphrologie-Dialyse-Apherese, Hôpital Universitaire Caremau, Nîmes, IDESP Université de Montpellier, France
4. Haute Autorité de Santé, Saint-Denis-La-Plaine, France
5. Service de néphrologie, HEGP, APHP, Paris, France
6. Service de néphrologie, Trousseau, APHP, Paris, France
7. Service Néphrologie-Dialyse-Aphérèse-Hypertension, Hôpital Edouard Herriot, Hospices Civils de Lyon, Université Lyon-1 INSERM U 1060, Lyon, France
8. Department of Public Health – Epidemiology, Department of Nephrology, Lille University Hospital Center, Lille, France; UMR1167 RIDAGE, Pasteur Institute of Lille, Inserm, Lille University, Lille, France
9. Center for Research in Epidemiology and Population Health, Paris-Saclay University, Paris-Sud University, Versailles Saint Quentin University, Inserm, Villejuif, France
10. Direction Procréation, embryologie et génétique humaine, Agence de la biomédecine, Saint-Denis-La-Plaine, France
11. Cohorte CONSTANCES, Inserm UMS11, Villejuif, France

Correspondence to:
Cécile COUCHOUD; E-mail :
cecile.couchoud@biomedecine.fr

Running head : Prevalence of chronic kidney disease in France

GRAPHICAL ABSTRACT



ABSTRACT

Background. Health policy-making require careful assessment of CKD epidemiology to develop efficient and cost-effective care strategies. The aim of the present study was to use the RENALGO-EXPERT algorithm to estimate the global prevalence of CKD in France.

Methods. An expert group developed the RENALGO-EXPERT algorithm based on healthcare consumption. This algorithm has been applied to the French National Health claims database (SNDS), where no biological test findings are available in order to estimate a national CKD prevalence for the years 2018-2021. The CONSTANCES cohort (+ 219,000 adults aged 18-69 with one CKD-EPI eGFR) was used to discuss the limit of using health claims data.

Results. Between 2018 and 2021, the estimated prevalence in the SNDS increased from 8.1% to 10.5%. The RENALGO-EXPERT algorithm identified 4.5% of the volunteers in the CONSTANCES as CKD. The RENALGO-EXPERT algorithm had a PPV of 6.2% and NPV of 99.1% to detect an eGFR<60 ml/min/1.73m². Half of 252 false positive cases (ALGO +, eGFR>90) had been diagnosed with kidney disease during hospitalization, and the other half based on healthcare consumption suggestive of a "high-risk" profile. 95% of the 1661 false negatives (ALGO -, eGFR<60) had an eGFR between 45 and 60 ml/min, ½ had medication and 2/3 a biological exams possibly linked to CKD. Half of them had a hospital stay during the period but none had a diagnosis of kidney disease.

Conclusions. Our result is in accordance with other estimations of CKD prevalence in the general population. Analysis of diverging cases (FP and FN) suggests using health claims data has inherent limitations. Such algorithm is able to identify patients whose care pathway is close to the usual and specific CKD pathways. It does not identify patients who have not been diagnosed or whose care is inappropriate or at early stage with stable GFR.

ORIGINAL UNEDITED MANUSCRIPT

KEY LEARNING POINTS

What was known:

The prevalence of total CKD is unknown, due to lack of CKD registries in many European countries. Some recent estimates varying between 7 and 10% of the adult population have been reported.

To overcome the limitations of having to rely on access to repeated determinations of eGFR, health claims databases have been used in various countries to estimate the prevalence of CKD.

This study adds:

The estimated prevalence of CKD in France at 8-10% is close to that expected.

By virtue of its construction, the RENALGO-EXPERT algorithm is able to identify patients whose care pathway is close to the usual and specific CKD pathways. It does not identify patients who have not been diagnosed or whose care is inappropriate or at early stage with stable GFR.

Potential impact:

Health system planning and policy-making require careful assessment of CKD epidemiology to develop efficient and cost-effective care strategies that aimed at slowing its progression.

This algorithm will now be used by French Health authorities as a contributing tool for CKD burden assessment and optimizing care delivery. However, complementary tools will have to be associated with this approach to address its inherent limits.

Keywords:

CKD, diabetes, Epidemiology, health claims databases, hypertension

INTRODUCTION

Chronic kidney disease (CKD) represents a heavy global health burden associated with increased mortality and morbidity and high economic impact. Worldwide, in 2017, 697.5 million (95% UI 649.2 to 752.0) cases of all-stage CKD were recorded, for a global prevalence of 9.1% (8.5 to 9.8)(1). The prevalence of kidney failure with replacement therapy (KFRT) in Europe and France is well known, thanks to the European ERA registry (2) and the French national REIN registry(3–5). However, the prevalence of total CKD is unknown, due to lack of CKD registries in many European countries(6). Some recent estimates varying between 7 and 10% of the adult population have been reported(7). A precise assessment of CKD epidemiology is critical for sustainable and efficient planning (e.g. resource allocation) and to develop, implement and evaluate cost-effective policies aimed at controlling CKD(8).

One main difficulty in identifying CKD patients is the silent nature of the disease in its early stages, with non-specific symptoms in the more advanced stages. Its identification is complicated by the definition of this disease, critically reliant on biological results on a given period (9). The definition of CKD includes all individuals with markers of kidney damage or those with an estimated Glomerular Filtration Rate (eGFR) of less than 60 ml/min/1.73m² on at least 2 occasions 90 days apart (with or without markers of kidney damage). Markers of kidney disease may include: albuminuria (albumin:creatinine ratio ACR > 3 mg/mmol), haematuria (or presumed or confirmed kidney origin), electrolyte abnormalities due to tubular disorders, kidney histological abnormalities, structural abnormalities detected by imaging (e.g. polycystic kidneys, reflux nephropathy) or a history of kidney transplantation. Then, CKD is classified based on the eGFR and the level of albuminuria and allow risk stratification of the patients. Patients are classified as G1-G5, based on the eGFR, and A1-A3 based on the urine ACR(10).

To overcome the limitations of having to rely on access to repeated determinations of eGFR, health claims databases have been used in various countries to estimate the prevalence of CKD(11–18). As a product of its universal health system coverage, France possesses one of the largest nationwide claims database in the world,

the National Health Data System (SNDS), covering the entire French population, i.e. 67 million inhabitants.(19) A joint effort of clinicians and researchers, referred to as group “REDSIAM Kidney Disease”, has led to the development of an algorithm, called RENALGO-EXPERT, that aims to identify patients with CKD using the claims data available in the SNDS(20).

The primary objective of this study was to estimate the prevalence of Chronic Kidney Disease (CKD) across France by applying the RENALGO-EXPERT algorithm to the national health claims database (SNDS). A secondary objective was to assess the performance of this algorithm and explore the challenges associated with using healthcare databases for prevalence estimation. For that secondary objective we used the CONSTANCES population-based cohort which is linked to the SNDS database and includes eGFR data.

ORIGINAL UNEDITED MANUSCRIPT

MATERIALS AND METHODS

The CKD case definition algorithm: RENALGO-EXPERT algorithm

The method and results of the first version of our CKD case definition algorithm has been published previously (20). Briefly, a consortium of experts in nephrology, kidney epidemiology and healthcare claims databases collaborated to design a practical algorithm for identifying Chronic Kidney Disease (CKD) cases. This algorithm evaluates CKD likelihood through a combination of indicators associated with the CKD care pathway. These indicators encompass various components of the French National Health Data System (SNDS), including, but not limited to, chronic health conditions, nephrologist consultations, CKD relevant medications, CKD relevant biological tests, CKD relevant medical acts, hospitalization records with CKD-linked diagnoses, CKD-related diagnostic groups. Inclusions of items were made by unanimous decisions. In the initial step, each item was categorized into three categories: "certain," "likely," or "possible" CKD item. The subsequent step involves classifying persons in two groups as "certain" or "likely" based on their holistic care pathway (recurring and combined health claims compatible with a CKD). This comprehensive approach offered a framework for CKD identification and classification. The validation of this algorithm in the French Childhood Cancer Survivor Study cohort showed good performance with a Sensitivity > 70% and a Specificity > 97%(20). This first version was however improved by adding the notion of repeated claims over a one-year period and additional combination between items.

Data sources

The French administrative healthcare database (SNDS)

The SNDS consists of two main databases: the Hospital Discharge Summaries Database (PMSI) and the National Health Insurance Claims Database (DCIR). It covers an extensive 98.8% of the French population, which translates to over 66 million individuals spanning from birth (or immigration) to death(21–23). The value of the SNDS rely on its national coverage, its comprehensiveness, the information provided at the individual level and its regular updating. Figure 1 presents an overview of the SNDS, in particular applied to our subject. Within the

PMSI database, a comprehensive array of primary, related and associated diagnoses are catalogued for either private or public medical, obstetric and surgical hospitalizations. These diagnoses adhere to the coding system outlined in the International Statistical Classification of Diseases and Related Health Problems, 10th Revision (ICD-10) (17). This repository also features details like hospitalization dates and durations. Furthermore, it encompasses encoded data about medical procedures conducted during hospital stays, coded according to the French Common Classification of Medical Acts (CCAM), as well as diagnosis-related groups and notably expensive pharmaceuticals. The DCIR database, on the other hand, encapsulates information on all reimbursed ambulatory care, consultations, medically coded procedures based on the French CCAM, prescribed medications categorized by the Anatomical Therapeutic Classification (ATC), and laboratory biological tests following the French Nomenclature of Biological Acts (NABM). Alongside its comprehensive coverage of reimbursed ambulatory care, the DCIR provides a compilation of chronic conditions warranting full reimbursement for related costs, supplemented by initiation and termination dates (“Affection longue durée”). However, it's worth noting that clinical and biological test findings are not encompassed within this database. Therefore, no information can be found considering CKD stages. Compared to some healthcare claims databases of other countries (USA or Sweden for example), it is worth noting that the French SNDS data for outpatient visits do not contain diagnoses (main or contributory).

THE CONSTANCES COHORT

The CONSTANCES cohort is a "general purpose" population-based epidemiological cohort that started in 2012. It is a French nationally representative sample of >200,000 volunteers aged between 18 and 69 at inclusion(24). It aims at contributing to the development of epidemiological research and to provide public health information. In addition to the baseline and annual self-administrated questionnaire completed at home, subjects underwent a health examination used to collect health-related data: clinical examination, blood analysis, blood pressure, weight, height and waist-to-hip ratio, electrocardiogram and spirometry, sight and hearing examination.

Systematic albuminuria and proteinuria detection were only implemented in 2018. Active follow-up is ensured

by a postal self-questionnaire to be completed every year at home, and an invitation for a follow-up visit every 4-5 years is planned for all cohort volunteers.

CONSTANCES' volunteers are also followed by annual direct linkage with the SNDS using Social Security Number.

In this cohort, the Kidney condition was evaluated by the Glomerular Filtration Rate (eGFR) estimated for each CONSTANCES volunteer using the CKD-EPI formula, based on serum creatinine measured enzymatically at inclusion. Therefore, only CKD stage 3-5 was considered. Those enrolled before 2017 had the opportunity to provide a second eGFR measure and had similar characteristics in terms of age, sex, comorbidities and eGFR values compared to the complete population (supplementary table 1).

Statistical analyses

Estimation of the overall French CKD prevalence

The RENALGO-EXPERT algorithm was applied to the SNDS data from the years 2018 to 2021. The prevalence of CKD in the French population was estimated as the number of persons classified with the algorithm as CKD "certain" or "likely", divided by the total of the individuals with claims in the given year. Among patients coded as "certain", those with identified claims related to dialysis or kidney transplantation were distinguished as such. No information can be given considering CKD stage since it doesn't include any information on eGFR or urinary results.

Performance of the algorithm

In the CONSTANCES cohort, the eGFR was estimated for each volunteer using the CKD-EPI formula, based on the blood creatinine measurement available at inclusion. CKD was defined as an eGFR below 60 ml/min/1.73m². In parallel, based on health claims from the year prior to inclusion, the volunteers were classified using the RENALGO-EXPERT algorithm into "without CKD", "certain CKD" or "likely CKD".

To evaluate the performance of the RENALGO-EXPERT algorithm in identifying stage 3-5 CKD volunteers, different indicators were calculated: sensitivity (Se), Specificity (Sp), positive predictive value (PPV), negative

predictive value (NPV), accuracy and the Cohen's kappa coefficient (k-coefficient) and its 95% confidence interval (CI).

The performance of the algorithm was also assessed using 2 others eGFR thresholds: 30 ml/min/1.73m and 90 ml/min/1.73m².

Subgroup analyses were done among persons that had a second measure of serum creatinine at the 5th year of follow-up and among those with a test of albuminuria or proteinuria. In these groups, CKD was defined as 2 values of eGFR below 60 ml/min/1.73m² or albuminuria >30 mg/mmol. Subgroup analyses were also performed in individuals with higher risk of CKD, i.e. with known diabetes or hypertension at inclusion.

Qualitative analysis of “diverging” cases

Volunteers with eGFR>90 ml/min/1.73m² but classified as CKD certain with the RENALGO-EXPERT algorithm and volunteers with an eGFR<60 ml/min/1.73m² but classified as ‘without CKD’ by the RENALGO-EXPERT algorithm were explored. Their clinical characteristics and health claims were reviewed.

All statistical analyses involved using SAS 9.4.

Data availability and ethics

The authors assert that all procedures contributing to this work comply with the ethical standards of the relevant national and institutional committees on human experimentation and with the Helsinki Declaration of 1975, as revised in 2008. All procedures have been approved by the Institutional review board (IRB) of the French Institute of Health (Inserm) (Opinion n°01-011, then n°21-842), and authorized by the by the French Data Protection Authority (« Commission Nationale de l'Informatique et des Libertés », CNIL) (Authorization #910486). The biobank obtained a favourable opinion from the Committee for the protection of individuals – CPP Sud Est I (#2018-32) and an authorization from the CNIL (#DR-2-2018-137). All volunteers sign a written consent form for their participation in Constances, and, where applicable, for their participation in the biobank.

RESULTS

Prevalence of CKD in the French population (SNDS database)

In 2018, 5,459,509 individuals were identified by RENALGO-EXPERT algorithm as having CKD, 5,521,404 in 2019, 6,584,667 in 2020 and 7,184,667 in 2021, representing an estimated prevalence in the general population increasing from 8.1% to 10.5% (Table 1). Prevalence increased with age and sex-ratio varied among age groups (Figure 2). The individuals identified as “certain” CKD represented 13% of the total of individuals identified by RENALGO-EXPERT algorithm. The characteristics of the patients did not vary according to the years. The median age was 67 years [Q1-Q3 : 51-78] (66 years [Q1-Q3 : 49-77] in the “likely” group , 74 years [Q1-Q3 : 61-85], in the “certain” group, 68 years [Q1-Q3 : 55-77], in the “certain” group with RRT). There were 54% women (56% in the “likely” group, 42% in the “certain” group, 35% in the “certain” group with RRT). There were 18% of individuals treated for diabetes, 16% with antihypertensive drugs and 7% with lipid-lowering agents. By including only individuals aged 15-74 years, the estimated prevalence in 2021 would have been 9.4%.

Performance of the algorithm in the CONSTANCES Cohort

In the CONSTANCES Cohort, 196 647 volunteers out of 206 278 were linked to the SNDS database and had at least one serum creatinine measurement available (supplementary Figure 1). The non-included individuals were marginally younger and had a slightly higher women representation, with an average age of 45 years (SD 13.8) compared to 47 years (SD 13.5) for those included in the analysis. The percentage of women in the un-included group was 58.6%, versus 53.4% in the included group. Based on the eGFR at inclusion, 34.8% of them had an eGFR lower than 90 ml/min/1.73m² and 1.1% lower than 60 ml/min/1.73m².

Based on the RENALGO-EXPERT algorithm, 4.5% of the volunteers in the CONSTANCES had CKD, respectively 790 and 8 025 volunteers as CKD “certain” and CKD “likely”. The characteristics of the population, according to this classification are described in Table 2. Volunteers identified as CKD with the algorithm are older and have more often associated cardiovascular risk factors (i.e. diabetes, hypertension or dyslipidaemia).

The RENALGO-EXPERT algorithm had a Sensitivity (Se) of 24.8%, Specificity (Sp) of 95.7%, Positive Predictive Value (PPV) of 6.2% and Negative Predictive Value (NPV) of 99.1% to detect CKD defined by $eGFR < 60$ ml/min/1.73m² (Table 3). Accuracy was high (95%), mainly because of the proportion of true negative due to the low prevalence. The kappa coefficient indicated a moderate agreement.

By increasing the eGFR reference value for CKD definition, the proportion of false negative increased from 0.8% (ref : 60 ml/min/1.73m²) to 32.9% (ref : 90 ml/min/1.73m²), while the proportion of false positive decreased from 4.2% (ref : 60 ml/min/1.73m²) to 2.6% (ref : 90 ml/min/1.73m²) (Table 4). By decreasing the eGFR reference value, the proportion of false negatives decreased from 0.8% (ref : 60 ml/min/1.73m²) to 0.04% and 0.0% (ref : 45 and 30 ml/min/1.73m² respectively), while the proportion of false positive increased from 4.2% (ref : 60 ml/min/1.73m²) to 4.4% 4.5% (ref : 45 and 30 ml/min/1.73m² respectively). The RENALGO-EXPERT algorithm' sensitivity at the 30 ml/min/1.73m² definition was 91,8%.

Subgroup analysis

During the follow-up, 57 308 volunteers (28%) had a second measure of serum creatinine (mean follow-up = 5.2 years). Among them, 26 593 (46.4%) had an $eGFR \geq 90$ ml/min/1.73m² at inclusion and at follow-up, 22.3% had a decrease of their eGFR (Supplementary table 1). In this subgroup, the RENALGO-EXPERT algorithm identified 3.8% of the volunteers with CKD. The RENALGO-EXPERT algorithm had a Se of 20.1%, Sp of 96.5%, PPV of 3.7% and NPV of 99.1% to detect CKD defined by $eGFR < 60$ ml/min/1.73m². (Supplementary Table 2).

Among the 196,647 volunteers who participated, 21 356 were enrolled between 2019 and 2020. Among this group, 16 593 underwent testing for both albuminuria/proteinuria and creatinine levels in the same examination and 14 579 had two serum creatinine measurements. Only 28 individuals had both 2 measures of $eGFR < 60$ ml/min/1.73m and/or proteinuria > 0.5 g/l or ACR > 30 mg/mmol (Supplementary Table 3).

At baseline, 5716 volunteers had diabetes and 26974 hypertension (Supplementary Table 4). In these subgroups, sensitivity increased as well as the positive predictive value and kappa coefficient with a slight

decrease of the specificity and negative predictive value at the cost of increased false positives (Table 5).

Accuracy decreased more in volunteers with diabetes (78.5%) than in volunteers with hypertension (87.2%).

Sensitivity and positive predictive value was higher in younger volunteers and in men.

Qualitative analysis of “diverging” cases

252 volunteers with $eGFR > 90 \text{ ml/min/1.73m}^2$ were classified as CKD “certain” with the algorithm (false positive).

Half of them had a kidney disease declared in the Health Claim database (ICD10 at hospital discharge), which may have been diagnosed in the presence of a proteinuria with a normal kidney function or with fluctuant GFR, which would explain that at inclusion in the CONSTANCES cohort they had a $eGFR > 90 \text{ ml/min/1.73m}^2$. The other half were classified because of a combination between compatible biological exams and drugs, which may also correspond to “high profiles” like volunteers with diabetes or cardiovascular comorbidities.

1 661 volunteers were not classified as CKD but had an $eGFR < 60$ (false negative). 95% of them had an $eGFR$ between 45 and 60 ml/min and a mean age of 63 years at inclusion in the CONSTANCES cohort. Half had a medication and two third biological exams possibly related to CKD. Half of them had a hospital stay during the period but none had a diagnosis of kidney disease.

ORIGINAL UNEDITED MANUSCRIPT

DISCUSSION

Based on a complex algorithm that includes various combinations of health care claims, the prevalence of CKD in the general population of France is estimated at 8-10%, using national health claims data SNDS with no biological values. This result is in accordance with other estimations of CKD prevalence in the general population. Using the CONSTANCES cohort that has eGFR data available, the RENALGO-EXPERT algorithm showed moderate performance in identifying CKD stage 3-5. In fact, the analysis of diverging cases suggests that this approach has limitations that should be borne in mind.

CKD prevalence according to available sources

Unlike our approach, many published studies had at their disposal measurement of serum creatinine and/or urine albumin in a sample of the general population allowing them to use the internationally validated definition of CKD. However, all these results have to be interpreted in the light of the characteristics of the sample, the definition of chronicity, the choice of a given equation for estimating GFR and the method of measuring serum creatinine or albuminuria(25–29). In France, the MONALISA study using three representative cross-sectional surveys in subjects aged 35–74.9 years estimated the CKD prevalence at 8.2% (95% CI, 7.4–8.9%)(30). In Europe, the adjusted CKD stages 1–5 prevalence in the adult population has been reported between 3.31% (95% CI, 3.30 to 3.33) in Norway and 17.3% (95% CI, 16.5 to 18.1) in the Northeast German Study of Health in Pomerania (SHIP) study(31). In the United States, with the data from the National Health and Nutrition Examination Surveys (NHANES 2015-2018), the prevalence of CKD was estimated at 13.3% (95% CI, 12.3%-14.4%)(32). In China, the overall prevalence of chronic kidney disease was estimated at 10.8% (10.2-11.3)(33). In an adult Arabic-Berber population in Morocco, the adjusted prevalence of CKD was estimated at 5.1%(34). In Canada, in individuals managed in primary care, 7.4% were identified as having CKD(35). A systematic review of 100 studies comprising 6,908,440 patients, reported a global prevalence of 13.4% for CKD stages 1–5 and 10.6% for CKD stages 3–5(36).

Although access to biological results is the preferred method, this is often not possible on a large scale.

Therefore, other studies have used diagnoses coded in Health claims databases to estimate the prevalence of

CKD. They did not directly use the results of biological tests but the diagnosis coded by health professionals.

Based on diagnosis at hospital discharge, in the Ontario study, 7.7% of the patients were classified as positive for the CKD database algorithm using 11 ICD codes(12). The US Renal Data System Coordinating Center identifies patients with chronic kidney disease (CKD) in administrative data sets by using diagnosis codes from inpatient claims or at least 2 from outpatient claims or physician and supplier service claims for kidney disease and comorbid conditions(37). CKD prevalence was estimated at around 7% of the Medicare population.

In the CaReMe CKD study, using both measured and diagnosed CKD from digital healthcare systems in 11 countries, the pooled prevalence of possible CKD was 10.0% (95% CI 8.7–11.4), defined as having a CKD diagnosis or one pathological UACR or eGFR value, where the chronicity of CKD was not confirmed. When using two pathological UACR or eGFR values at least 90 days apart the estimation was 7.0% (5.6-8.5), with only one value it raised to 9.0% (7.6%-10.4%) When using a registered CKD diagnosis, with or without available pathological eGFR and/or UACR values the estimation fell to 3.7% (2.6-4.8)(7).

Finally, only a few studies like ours, without biological results have used medico-administrative database that combined Health claims with diagnosis and information on drugs, visits or procedures to improve their algorithms. In the Lazio region, a study has combined different health information systems: the hospital discharge registry, the ticket exemption registry, the outpatient specialist service information system, the drug dispensing registry, the regional registry of causes of death and the regional health assistance files(18). The crude prevalence rate of CKD in the Lazio region was estimated at 1.76% (95%CI 1.75, 1.78). When applied to patients at Gemelli Hospital, an academic medical centre in Rome, the prevalence was estimated at 8.8% (95%CI 8.5-9.1)(38). A recent French study used machine learning to identify patients with CKD based on a 1/97th representative sample of the general French population(39). Their estimated prevalence was 0.8% for non-dialysis-dependent chronic kidney disease.

Performances of all these algorithms are linked to the type of data used, diagnoses and procedural codes used in hospital-based database and/or prescriptions of specific drugs or laboratory biological tests. The transportability of these studies from one country to another is also difficult due to the different types of data available. Indication bias due to the fact that laboratory tests and procedures are linked to patient's characteristics must also be considered(40).

Number of individuals on RRT was estimated at 81 695 in 2021, lower than the 92 535 patients published by the French national REIN registry(41). Missing cases are probably stable kidney transplant patients with no sufficient Health claims to be detected by the RENALGO-EPXERT algorithm.

Performance of the RENALGO-EXPERT algorithm in the CONSTANCES cohort

Many algorithms used to identify CKD in hospital discharge databases have high specificity but relatively low sensitivity(13–16,42). Adding medication, i.e. CKD targeted drugs to the algorithm, by reducing false positive, improves specificity and reduces sensitivity. Sensitivity generally improves as the observation window gets longer because it reduces false negatives due to more information taken into account.

The Lazio algorithm, similar to ours, showed better performance when applied to hospital patients, with a sensitivity of 51.0%, specificity of 96.5%, PPV of 64.5% and NPV of 94.0% to detect CKD defined by $eGFR < 60$ ml/min/1.73m². This better performance (higher PPV and NPV) could be explained by the fact that it was applied to patients who had laboratory measurements prescribed during hospitalization, emergency room access or ambulatory care that allows better defining CKD. When applied to the general population, the Lazio CKD prevalence was only 1.8% with lower performance due to low sensitivity.

Applied to a sample of the general population, our RENALGO-EXPERT algorithm had a low performance to detect CKD defined by $eGFR < 60$ ml/min/1.73m². In fact, by construction, the RENALGO-EXPERT algorithm designed around health claims data from a one-year period, primarily identifies patients following established and recommended care pathways. Therefore, it may not readily detect undiagnosed individuals or those

receiving inadequate care. The lack of specific drugs or procedures implies to use various combinations that makes describing the algorithm particularly complex (Supplementary Table 5). The previous validation of the RENAGLO-EPXERT algorithm in the French Childhood Cancer Survivor Study cohort showed better performance in a selected population who are likely to receive optimal care (20).

Considering the possible "false positives", individuals that are identified by RENALGO-EXPERT are not at all uninteresting for a targeted screening strategy. Considering the possible "false negatives", in France, each year around 60 Million measurements of serum creatinine are reimbursed by the National Health Insurance¹. Since 2012, medical analysis laboratories are asked to report serum creatinine results associated, for the evaluation of kidney function, by an estimate of the GFR by the CKD-EPI equation². However, especially at early stage, this does not necessarily lead to a specific modification of the care that could have made it possible to identify the patients. Nevertheless, when focusing on a subgroup with a higher likelihood of being diagnosed, the algorithm's sensitivity significantly improves to 91.8% with a reference eGFR of 30 ml/min/1.73m².

The main limitations of using CONSTANCES to study the RENALGO-EXPERT algorithm's performance was the relative low age of the volunteers and the small number of volunteers who had 2 creatinine measurements and an albuminuria test. Because chronicity criterion could not be used, we may have underestimated the sensitivity by including false positive cases. On the other hand, as in the paper of van Oosten and col, sensitivity was higher in volunteers aged below 50 years. This could be explained by the fact that young people are less likely to use healthcare and have fewer comorbidities like diabetes and hypertension, so they are less likely to be false positives. The CONSTANCES volunteers were under 70 years of age, which did not allow us to evaluate the performance of our algorithm in the elderly, a high-risk population for CKD. Analysis of misclassified cases has shown that our reference to define CKD with only one value of eGFR may be questionable.

¹ <https://assurance-maladie.ameli.fr/etudes-et-donnees/actes-biologie-medecale-type-prescripteur-biolam>

² [https://www.has-sante.fr/upload/docs/application/pdf/2012-](https://www.has-sante.fr/upload/docs/application/pdf/2012-10/evaluation_du_debit_de_filtration_glomerulaire_et_du_dosage_de_la_creatininemie_dans_le_diagnostic_de_la_maladie_renale_chronique_chez_ladulte_-_fiche_but.pdf)

[10/evaluation_du_debit_de_filtration_glomerulaire_et_du_dosage_de_la_creatininemie_dans_le_diagnostic_de_la_maladie_renale_chronique_chez_ladulte_-_fiche_but.pdf](https://www.has-sante.fr/upload/docs/application/pdf/2012-10/evaluation_du_debit_de_filtration_glomerulaire_et_du_dosage_de_la_creatininemie_dans_le_diagnostic_de_la_maladie_renale_chronique_chez_ladulte_-_fiche_but.pdf)

Perspectives

Even if the use of the CONSTANCES cohort may be questionable due to its composition (i.e. the use of a single eGFR value and the low number of individuals with CKD), this validation phase showed us a poor ability of the algorithm to identify patients when they had a eGFR<60. This low sensitivity suggests the risk of underestimating prevalence. In subgroups with a higher risk of CKD, the performance of RENALGO-EXPERT improved a little. Because positive and negative predictive values do inherently vary with pre-test probability (e.g., changes in population disease prevalence), the performance of the RENALGO-EXPERT algorithm will be tested in further cohorts including high risk patients.

In Table 6 advantages and limits of various methods to estimate CKD prevalence are presented. While the ideal situation would be to have two creatinine determinations and a proteinuria test in a representative sample of people and in each subgroup of interest, each territory has to make do with its own available data.

Very few countries have easy access to all routine biological data. Until a database that centralizes all biological test results becomes available in France, the RENALGO-EXPERT algorithm can be used as a tool to monitor CKD prevalence within the French National Health Data System (SNDS) and therefore guide health policy planning.

Although the sensitivity of the RENALGO-EXPERT algorithm is low in the general population, its high specificity is interesting to identify high-risk groups of CKD. Studies that aim to evaluate care and trajectories of these patients could be carried out on such a sample more likely to be representative of the target population. This algorithm will now be used by French Health authorities as a contributing tool for thought on expenditure and the evolution of the care offering. However, because patients not diagnosed or without specific medical care are not detected, this monitoring will have to be associated by the development of additional tools.

Although databases differ widely from one country to another, due to reimbursement methods and social security coverage, standardizing such an algorithm would enable international comparisons.

In an attempt to improve our identification tool, an algorithm using Artificial Intelligence is under development, i.e. RENALGO-AI.

CONCLUSION

By virtue of its construction, the RENALGO-EXPERT algorithm is able to identify patients whose care pathway is close to the usual and specific CKD pathways. It does not identify patients who have not been diagnosed or whose care is inappropriate or at early stage with stable GFR. This is an inherent limitation of this kind of approach, which is based on healthcare consumption rather than biological assays on a representative sample. However, the estimated prevalence of CKD in France at 8-10% is close to that expected. As suggested by some recent publication, weighting to account for individuals less regularly monitored may provide more reliable prevalence estimates(40).

ORIGINAL UNEDITED MANUSCRIPT

ACKNOWLEDGEMENTS

The authors thank the team of the “Population-based cohorts unit” (Cohortes en population) that designed and manages the Constances cohort study. They also thank the French national health insurance fund (“Caisse nationale d’assurance maladie”, Cnam) and its Health screening centres (“Centres d’examens de santé”), which are collecting a large part of the data, as well as the French national old-age insurance fund (« Caisse nationale d’assurance vieillesse », Cnav) for its contribution to the constitution of the cohort, and ClinSearch, Asqualab and Eurocell, which are conducting the data quality control.

CONFLICT OF INTEREST STATEMENT

The authors declare that they have no conflict of interest.

AUTHORS’ CONTRIBUTIONS

The authors confirm contribution to the paper as follows: RENALGO-EXPERT development: CC, MR, ML, MO, EM, LH, PC, GEF, HA, MM, MI, BMS ; study conception and design: CC, MR, BMS, SK; data collection: GM, ZM, KS; analysis and interpretation of results: CC, MR, DZ, SK; draft manuscript preparation: CC, MR, MO, EM, LH, PC, GEF, HA, MM, BMS, KSZ. All authors reviewed the results and approved the final version of the manuscript.

FUNDING

The Constances cohort study was supported and funded by the French national health insurance fund (« Caisse nationale d’assurance maladie », Cnam). Constances is a National infrastructure for biology and health (“Infrastructure nationale en biologie et santé”) and benefits from a grant from the French national agency for research (ANR-11-INBS-0002). Constances is also partly funded to a small extent by industrial companies, notably in the healthcare sector, within the framework of Public-Private Partnerships (PPP). None of these funding sources had any role in the design of the study, collection and analysis of data or decision to publish.

DATA AVAILABILITY STATEMENT

Due to legal restrictions SNDS or CONSTANCES data cannot be made publicly available. More information regarding data access can be found at : <https://www.constances.fr/guide-acces-donnees.pdf> and <https://www.health-data-hub.fr/cesrees> .

ORIGINAL UNEDITED MANUSCRIPT

REFERENCES

1. Bikbov B, Purcell CA, Levey AS, Smith M, Abdoli A, Abebe M, et al. Global, regional, and national burden of chronic kidney disease, 1990–2017: a systematic analysis for the Global Burden of Disease Study 2017. *The Lancet*. 2020 Feb;395(10225):709–33.
2. Huijben JA, Kramer A, Kerschbaum J, de Meester J, Collart F, Arévalo OLR, et al. Increasing numbers and improved overall survival of patients on kidney replacement therapy over the last decade in Europe: an ERA Registry study. *Nephrol Dial Transplant*. 2023 Mar 31;38(4):1027–40.
3. Caillet A, Mazoué F, Wurtz B, Larre X, Couchoud C, Lassalle M, et al. Which data in the French registry for advanced chronic kidney disease for public health and patient care? *Nephrol Ther*. 2022 Jul;18(4):228–36.
4. Couchoud C, Stengel B, Landais P, Aldigier JC, de CF, Dabot C, et al. The renal epidemiology and information network (REIN): a new registry for end-stage renal disease in France. *Nephrol Dial Transplant*. 2006 Feb;21(0931–0509 (Print)):411–8.
5. Issad B, Galland R, Merle V, Lobbedez T, Lassalle M. Prévalence de l'IRCT et part des différentes modalités de traitement. *Néphrologie Thérapeutique*. 2022 Sep;18(5):18/5S-e15-18/5S-e20.
6. Bello AK, Levin A, Manns BJ, Feehally J, Drueke T, Faruque L, et al. Effective CKD care in European countries: challenges and opportunities for health policy. *Am J Kidney Dis Off J Natl Kidney Found*. 2015 Jan;65(1):15–25.
7. Sundström J, Bodegard J, Bollmann A, Vervloet MG, Mark PB, Karasik A, et al. Prevalence, outcomes, and cost of chronic kidney disease in a contemporary population of 2.4 million patients from 11 countries: The CaReMe CKD study. *Lancet Reg Health - Eur*. 2022 Sep;20:100438.
8. Alwan A, Maclean DR, Riley LM, d'Espaignet ET, Mathers CD, Stevens GA, et al. Monitoring and surveillance of chronic non-communicable diseases: progress and capacity in high-burden countries. *Lancet Lond Engl*. 2010 Nov 27;376(9755):1861–8.
9. KDIGO. KDIGO 2012 Clinical Practice Guideline for the Evaluation and Management of Chronic Kidney Disease. *Kidney Int*. 2013;Suppl(3):1–150.
10. Writing Group for the CKD Prognosis Consortium, Grams ME, Coresh J, Matsushita K, Ballew SH, Sang Y, et al. Estimated Glomerular Filtration Rate, Albuminuria, and Adverse Outcomes: An Individual-Participant Data Meta-Analysis. *JAMA*. 2023 Oct 3;330(13):1266–77.
11. van Oosten MJM, Brohet RM, Logtenberg SJJ, Kramer A, Dikkeschei LD, Hemmelder MH, et al. The validity of Dutch health claims data for identifying patients with chronic kidney disease: a hospital-based study in the Netherlands. *Clin Kidney J*. 2021 Jun;14(6):1586–93.

12. Fleet JL, Dixon SN, Shariff SZ, Quinn RR, Nash DM, Harel Z, et al. Detecting chronic kidney disease in population-based administrative databases using an algorithm of hospital encounter and physician claim codes. *BMC Nephrol*. 2013 Dec;14(1):81.
13. Ronksley PE, Tonelli M, Quan H, Manns BJ, James MT, Clement FM, et al. Validating a case definition for chronic kidney disease using administrative data. *Nephrol Dial Transplant*. 2012 May 1;27(5):1826–31.
14. Muntner P, Gutiérrez OM, Zhao H, Fox CS, Wright NC, Curtis JR, et al. Validation Study of Medicare Claims to Identify Older US Adults With CKD Using the Reasons for Geographic and Racial Differences in Stroke (REGARDS) Study. *Am J Kidney Dis*. 2015 Feb;65(2):249–58.
15. Grams ME, Plantinga LC, Hedgeman E, Saran R, Myers GL, Williams DE, et al. Validation of CKD and related conditions in existing data sets: A systematic review. *Am J Kidney Dis*. 2011 Jan;57(1523–6838 (Electronic)):44–54.
16. Vlasschaert MEO, Bejaimal SAD, Hackam DG, Quinn R, Cuerden MS, Oliver MJ, et al. Validity of Administrative Database Coding for Kidney Disease: A Systematic Review. *Am J Kidney Dis*. 2011 Jan;57(1):29–43.
17. Bello A, Hemmelgarn B, Manns B, Tonelli M, for Alberta Kidney Disease Network. Use of administrative databases for health-care planning in CKD. *Nephrol Dial Transplant*. 2012 Oct 1;27(suppl 3):iii12–iii18.
18. Marino C, Ferraro PM, Bargagli M, Cascini S, Agabiti N, Gambaro G, et al. Prevalence of chronic kidney disease in the Lazio region, Italy: a classification algorithm based on health information systems. *BMC Nephrol*. 2020 Dec;21(1):23.
19. Tuppin P, Rudant J, Constantinou P, Gastaldi-Ménager C, Rachas A, de Roquefeuil L, et al. Value of a national administrative database to guide public decisions: From the système national d'information interrégimes de l'Assurance Maladie (SNIIRAM) to the système national des données de santé (SNDS) in France. *Rev Epidemiol Sante Publique*. 2017 Oct;65 Suppl 4:S149–67.
20. Mansouri I, Raffray M, Lassalle M, de Vathaire F, Fresneau B, Fayeche C, et al. An algorithm for identifying chronic kidney disease in the French national health insurance claims database. *Nephrol Ther*. 2022 Jul;18(4):255–62.
21. Moulis G, Lapeyre-Mestre M, Palmaro A, Pugno G, Montastruc JL, Sailler L. French health insurance databases: What interest for medical research? *Rev Médecine Interne*. 2015 Jun;36(6):411–7.
22. Tuppin P, de RL, Weill A, Ricordeau P, Merliere Y. French national health insurance information system and the permanent beneficiaries sample. *RevEpidemiolSante Publique*. 2010 Aug;58(0398–7620 (Print)):286–90.

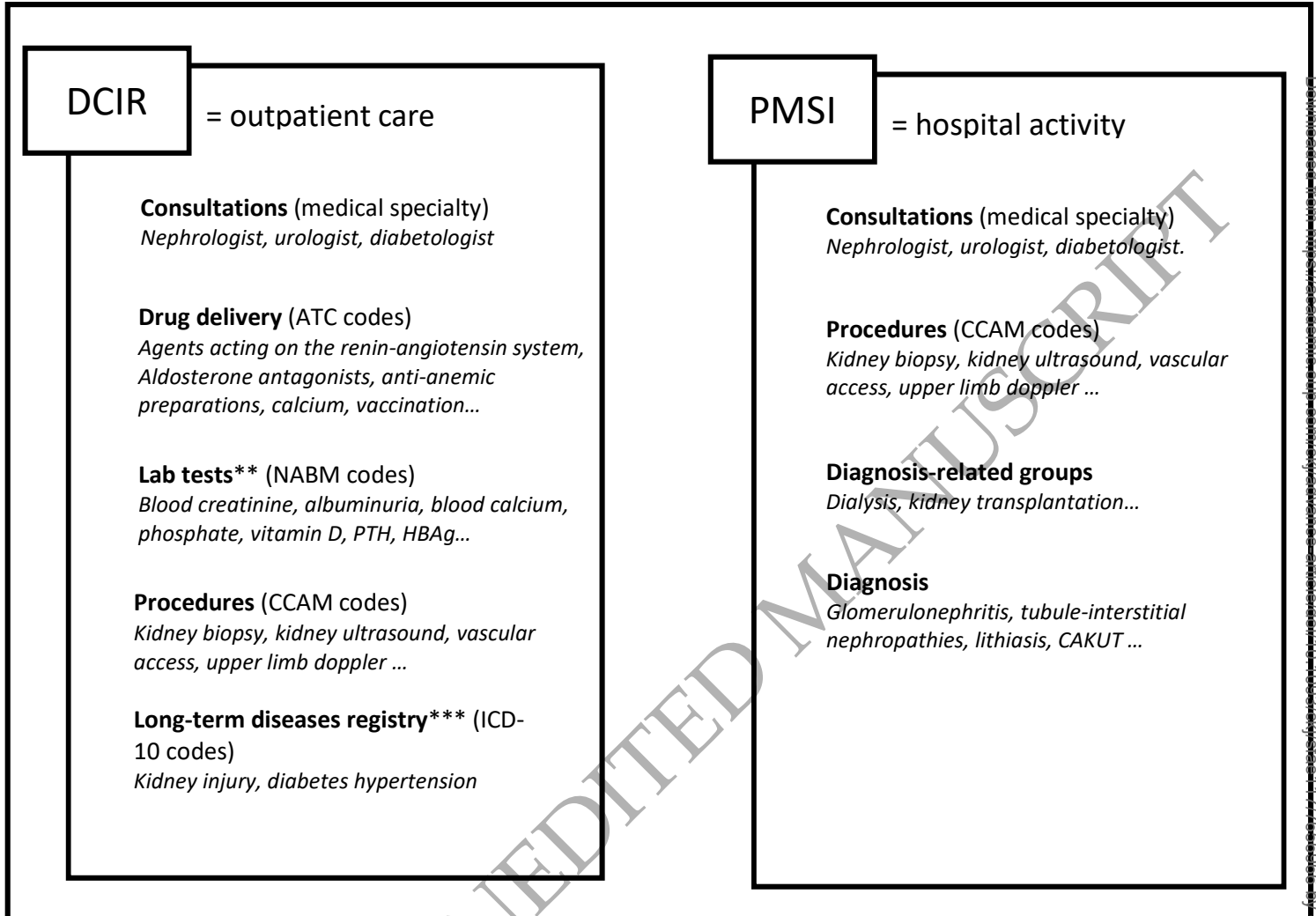
23. Bezin J, Duong M, Lassalle R, Droz C, Pariente A, Blin P, et al. The national healthcare system claims databases in France, SNIRAM and EGB: Powerful tools for pharmacoepidemiology. *Pharmacoepidemiol Drug Saf.* 2017 Aug;26(8):954–62.
24. CONSTANCES team, Zins M, Goldberg M. The French CONSTANCES population-based cohort: design, inclusion and follow-up. *Eur J Epidemiol.* 2015 Dec;30(12):1317–28.
25. Delanaye P, Glasscock RJ, De Broe ME. Epidemiology of chronic kidney disease: think (at least) twice! *Clin Kidney J.* 2017 Jun;10(3):370–4.
26. Glasscock RJ, Warnock DG, Delanaye P. The global burden of chronic kidney disease: estimates, variability and pitfalls. *Nat Rev Nephrol.* 2017 Feb;13(2):104–14.
27. De Broe ME, Gharbi MB, Zamd M, Elseviers M. Why overestimate or underestimate chronic kidney disease when correct estimation is possible? *Nephrol Dial Transplant.* 2017 Apr;32(suppl_2):ii136-ii141.
28. Venuthurupalli SK, Hoy WE, Healy HG, Cameron A, Fassett RG. CKD Screening and Surveillance in Australia: Past, Present, and Future. *Kidney Int Rep.* 2018 Jan;3(1):36–46.
29. Carrero JJ, Elinder CG. The Stockholm CREAtinine Measurements (SCREAM) project: Fostering improvements in chronic kidney disease care. *J Intern Med.* 2022 Mar;291(3):254–68.
30. Bongard V, Dallongeville J, Arveiler D, Ruidavets JB, Cottel D, Wagner A, et al. Estimation et caractérisation de l'insuffisance rénale chronique en France. *Ann Cardiol Angéiologie.* 2012 Aug;61(4):239–44.
31. Bruck K, Stel VS, Gambaro G, Hallan S, Volzke H, Arnlov J, et al. CKD Prevalence Varies across the European General Population. *JAmSocNephrol.* 2016 Jul;27(1533–3450 (Electronic)):2135–47.
32. Kibria GMA, Crispen R. Prevalence and trends of chronic kidney disease and its risk factors among US adults: An analysis of NHANES 2003-18. *Prev Med Rep.* 2020 Dec;20:101193.
33. Zhang L, Wang F, Wang L, Wang W, Liu B, Liu J, et al. Prevalence of chronic kidney disease in China: a cross-sectional survey. *The Lancet.* 2012 Mar;379(9818):815–22.
34. Benghanem Gharbi M, Elseviers M, Zamd M, Belghiti Alaoui A, Benahadi N, Trabelssi EH, et al. Chronic kidney disease, hypertension, diabetes, and obesity in the adult population of Morocco: how to avoid “over”- and “under”-diagnosis of CKD. *Kidney Int.* 2016 Jun;89(6):1363–71.
35. Bello AK, Ronksley PE, Tangri N, Kurzawa J, Osman MA, Singer A, et al. Prevalence and Demographics of CKD in Canadian Primary Care Practices: A Cross-sectional Study. *Kidney Int Rep.* 2019 Apr;4(4):561–70.

36. Hill NR, Fatoba ST, Oke JL, Hirst JA, O'Callaghan CA, Lasserson DS, et al. Global Prevalence of Chronic Kidney Disease – A Systematic Review and Meta-Analysis. Remuzzi G, editor. PLOS ONE. 2016 Jul 6;11(7):e0158765.
37. Collins AJ, Chen SC, Gilbertson DT, Foley RN. CKD Surveillance Using Administrative Data: Impact on the Health Care System. Am J Kidney Dis. 2009 Mar;53(3):S27–36.
38. Ferraro PM, Agabiti N, Angelici L, Cascini S, Bargagli AM, Davoli M, et al. Validation of a Classification Algorithm for Chronic Kidney Disease Based on Health Information Systems. J Clin Med. 2022 May 11;11(10):2711.
39. Dardim K, Fernandes J, Panes A, Beisel J, Schmidt A, Wolfram J, et al. Incidence, prevalence, and treatment of anemia of non-dialysis-dependent chronic kidney disease: A retrospective database study in France. Bennett K, editor. PLOS ONE. 2023 Jul 5;18(7):e0287859.
40. Mazhar F, Sjölander A, Fu EL, Ärnlöv J, Levey AS, Coresh J, et al. Estimating the prevalence of chronic kidney disease while accounting for nonrandom testing with inverse probability weighting. Kidney Int. 2023 Feb;103(2):416–20.
41. Couchoud C, Lassalle M. REIN annual report 2021 [Internet]. Agence de la biomédecine, France; Available from: https://www.agence-biomedecine.fr/IMG/pdf/rapport_rein_2021_2023-06-26.pdf
42. van Oosten MJM, Logtenberg SJJ, Edens MA, Hemmelder MH, Jager KJ, Bilo HJG, et al. Health claims databases used for kidney research around the world. Clin Kidney J. 2021 Feb 3;14(1):84–97.

ORIGINAL UNEDITED MANUSCRIPT

Figure1. Overview of the French SNDS database and the data of interest for RENALGO-EXPERT algorithm*

SNDS

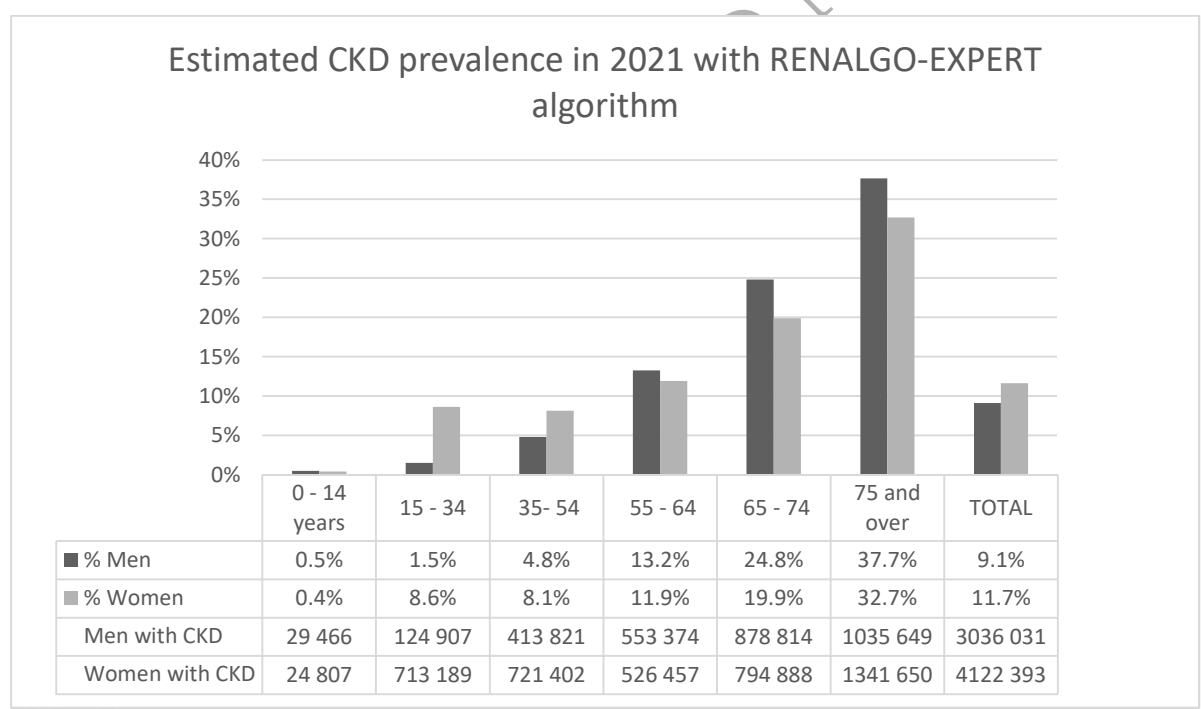
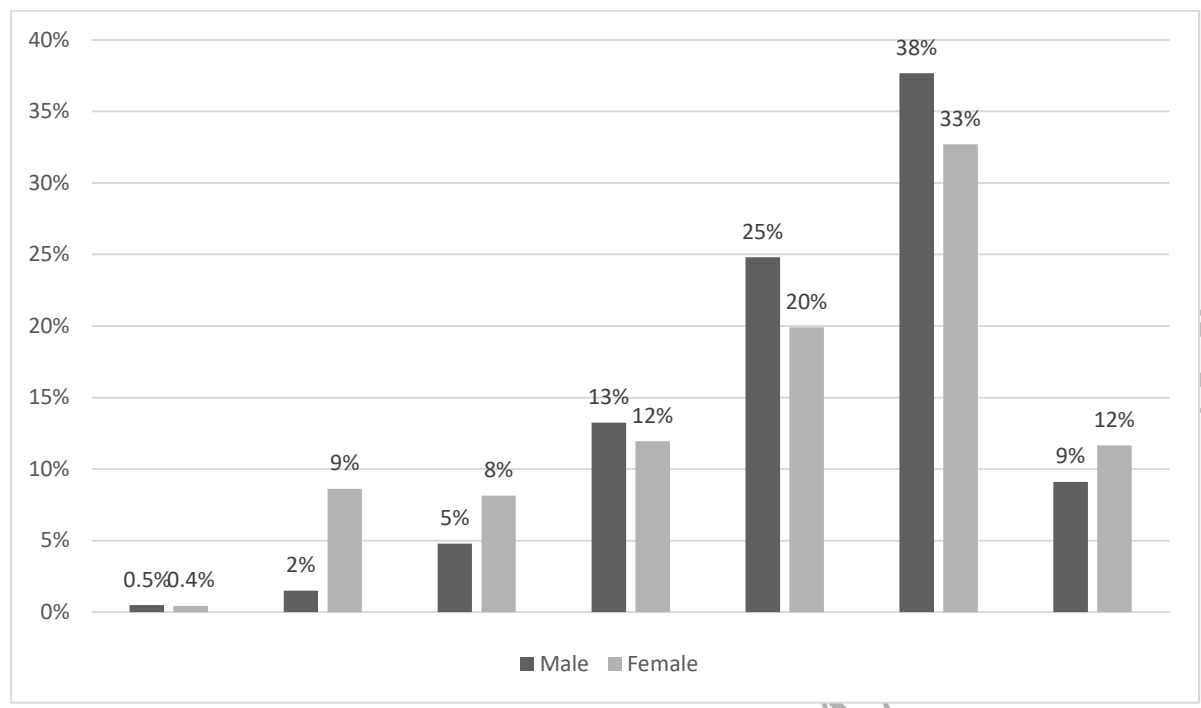


* For full CKD related healthcare items see Mansouri et al.

** No lab results available

*** 100% coverage for a list of 31 diseases

Figure 2. Prevalence of CKD identified by RENALGO-EXPERT in 2021 according to age and gender in the SNDS national health database *



* no information can be given considering CKD stage since SNDS doesn't include any information on eGFR or urinary results.

Table 1 Prevalence of CKD in the French population: number of individuals identified by the RENALGO-EXPERT algorithm in the SNDS national health database *

	2018		2019		2020		2021	
RENALGO-EXPERT classification	Number of individuals identified as CKD	Prevalence (denominator : 67 296 443)	Number of individuals identified as CKD	Prevalence (denominator : 67 749 000)	Number of individuals identified as CKD	Prevalence (denominator : 68 344 615)	Number of individuals identified as CKD	Prevalence (denominator : 68 713 200)
CKD Certain with Renal replacement therapy	75 943	0.11%	80 789	0.12%	79 427	0.12%	81 695	0.12%
CKD Certain without Renal replacement therapy	658 993	0.98%	698 722	1.03%	726 473	1.06%	719 229	1.05%
CKD Likely	4 724 573	7.02%	4 741 893	7.00%	5 778 767	8.46%	6 383 743	9.29%
Total	5 459 509	8.11%	5 521 404	8.15%	6 584 667	9.63%	7 184 667	10.46%

* no information can be given considering CKD stage since SNDS doesn't include any information on eGFR or urinary results.

ORIGINAL UNEDITED MANUSCRIPT

Table 2 Characteristics of the CONSTANCES cohort patients according to their classification with the RENALGO-
EXPERT algorithm

	CKD CERTAIN	CKD LIKELY	NO CKD	Total
N	790	8 025	187 832	196 647
Age, mean (Sdt)	54.9 (12.2)	49.7 (14.3)	47.0 (13.4)	47.2 (13.5)
% Male	54.7	36.9	46.9	46.5
% with hypertension	71.1	44.1	29.8	30.5
% with diabetes	19.1	15.3	3.5	4.0
% with dyslipidemia	58.5	45.1	31.4	32.0
eGFR (ml/min/1.73m²)				
Q1	55.1	82.1	85.6	85.4
Median	77.7	94.0	95.8	95.7
Q3	94.1	106.5	106.3	106.3
% eGFR <90	68.1	39.8	34.4	34.8
% eGFR <60	30.2	3.8	0.9	1.1
% eGFR <45	15.3	0.8	0.04	0.13
% eGFR <30	6.2	0.1	0.0	0.03

ORIGINAL UNEDITED MANUSCRIPT

Table 3 Performance of the RENALGO-EXPERT algorithm according to the level of eGFR at 60 ml/min/1.73m²

RENALGO- EXPERT Algorithm	eGFR CONSTANCES cohort	
	eGFR<60	eGFR≥60
CKD +	TP = 548 (0.3%)	FP=8 267 (4.2%)
CKD -	FN=1661 (0.8%)	TN = 186 171 (94.7%)

TP : true positive, FN : false negative, FP : false positive, TN : true negative, eGFR in ml/min/1.73m²

Se	Sp	PPV	NPV	LR+	LR-	Accuracy	Cohen's kappa coefficient
24.8%	95.7%	6.2%	99.1%	5.8	0.78	95.0%	8.3% (07.5-9.1%)

Se : sensitivity, Sp : specificity, PPV : positive predictive value, NPV: negative predictive value,

ORIGINAL UNEDITED MANUSCRIPT

Table 4. Assignment status with three other thresholds of eGFR level

RENALGO- EXPERT Algorithm	eGFR CONSTANCES cohort					
	eGFR <90	eGFR ≥90	eGFR <45	eGFR ≥45	eGFR <30	eGFR ≥30
CKD +	TP = 3 734 (1.9%)	FP = 5 081 (2.6%)	TP = 188 (0.1%)	FP=8627 (4.4%)	TP = 56 (0.03%)	FP=8759 (4.5%)
CKD -	FN=64 682 (32.9%)	TN=123 150 (62.6%)	FN=75 (0.04%)	TN = 187 757 (95.5%)	FN=5 (0%)	TN = 1987 827 (95.5%)

TP : true positive, FN : false negative, FP : false positive, TN : true negative, eGFR in ml/min/1.73m²

eGFR thresholds	Se	Sp	PPV	NPV	LR+	LR-	Accuracy	Cohen's kappa coefficient
eGFR <90	5.4%	96.0%	42.4%	65.6%	1.35	0.99	64.5%	1.2% (0.9-1.5%)
eGFR <45	71.5%	95.6%	2.1%	99.96%	16.25	0.3	95.6%	3.9% (3.3-4.4%)
eGFR <30	91.8%	95.5%	0.6%	99.97%	20.4	0.09	95.5%	1.9% (1.6-2.1%)

ORIGINAL UNEDITED MANUSCRIPT

Table 5 Performance of the RENALGO-EXPERT algorithm according to the level of eGFR among two

subpopulations: 5716 volunteers with diabetes, 26974 with hypertension, 110687 <50y, 85960 ≥50y, 91438

men and 105209 women

	RENALGO-	eGFR CONSTANCES cohort	
	EXPERT Algorithm	eGFR<60	eGFR≥60
Diabetes	CKD +	TP = 126 (2.2%)	FP= 1 115 (19.5%)
	CKD -	FN= 115 (2.0%)	TN = 4 360 (76.3%)
Hypertension	CKD +	TP = 427 (1.6%)	FP= 2 688 (9.9%)
	CKD -	FN= 753 (2.8%)	TN = 23 106 (85.7%)
< 50 years	CKD +	TP = 58 (0.05%)	FP= 3 950 (3.6%)
	CKD -	FN= 101 (0.1%)	TN = 106 578 (96.3%)
≥ 50 years	CKD +	TP = 490 (0.6%)	FP= 4 317 (5.0%)
	CKD -	FN= 1 560 (1.8%)	TN = 79 593 (92.6%)
Men	CKD +	TP = 333 (0.4%)	FP= 3 057 (3.3%)
	CKD -	FN= 749 (0.8%)	TN = 87 299 (95.5%)
Women	CKD +	TP = 215 (0.2%)	FP= 5 210 (5.0%)
	CKD -	FN= 912 (0.9%)	TN = 98 872 (94.0%)

TP : true positive, FN : false negative, FP : false positive, TN : true negative, eGFR in ml/min/1.73m²

	Se	Sp	PPV	NPV	LR+	LR-	Accuracy	Cohen's kappa coefficient
Diabetes	52.3%	79.6%	10.2%	97.4%	2.56	0.60	78.5%	10,7% (08.3-13.10%)
Hypertension	36.2%	89.6%	13.7%	96.8%	3.48	0.71	87.2%	14.5% (12.8-16.1%)
< 50 years	36.5%	96.4%	1.4%	99.9%	10.14	0.66	96.3%	2.5% (1.8-3.2%)
>= 50 years	23.9%	94.8%	10.2%	98.1%	4.6	0.8	93.2%	11.3% (10.2-12.5%)
Men	30.8%	96.6%	9.8%	99.1%	9.06	0.72	95.8%	13.3% (11.9-14.8%)
Women	19.1%	95.0%	4.0%	99.1%	3.82	0.85	94.2%	4.9% (4.0-5.7%)

Se : sensitivity, Sp : specificity, PPV : positive predictive value, NPV: negative predictive value,

ORIGINAL UNEDITED MANUSCRIPT

Table 6 Summary of various approaches to estimate CKD prevalence

Sources	Information available	Advantages	Limits	consequence on CKD prevalence estimation	Examples (reference)
Cross sectional studies with 1 measurement	serum creatinine, urine albumin	partial validated definition of CKD , possibility to identify asymptomatic individuals	Costly and time-consuming studies to set up, on sample basis (representativity ?), no chronicity criteria	questionable extrapolation , over estimation of the sensitivity	France : MONALISA US : NHANES
Cross sectional studies with 2 measurements	serum creatinine, urine albumin	validated definition of CKD , possibility to identify asymptomatic individuals	Costly and time-consuming studies to set up, on sample basis (representativity?)	questionable extrapolation , over estimation of the sensitivity	Morocco
Electronic medical records	serum creatinine, urine albumin	validated definition of CKD, chronicity, possibility to identify asymptomatic individuals	Depending on accessibility of such database, on sample basis (representativity?)	questionable extrapolation	Canada : Canadian Primary Care Sentinel Surveillance Network
Diagnosis at hospital discharge	diagnosis	classification done by physicians, data reuse	depending on accessibility of such database, quality of coding, selection bias (hospitalized patients)	great underestimation	Ontario study
Diagnosis at hospital discharge or outpatient claims	diagnosis	classification done by physicians, date reuse	depending on accessibility of such database, quality of coding, selection bias (people who sought medical care)	Underestimation	USRDS
Diagnosis and laboratory results	diagnosis and serum creatinine +/- urine albumin	validated definition and classification done by physicians, date reuse	depending on accessibility of such database, quality of coding, selection bias (people who sought medical care)	underestimation but probably close to the best possible estimate	CaReMe CKD study SCREAM project
Medico administrative databases, experts algorithm	diagnosis, drugs, visits, procedures	data reuse	depending on accessibility of such database and quality of the algorithm, selection bias (people who sought medical care)	hard to estimate	Italy : Lazio study France: RENALGO-EXPERT

Medico administrative databases, algorithm from Artificial Intelligence	diagnosis, drugs, visits, procedures	data reuse	depending on accessibility of such database and quality of the algorithm, algorithm interpretability, selection bias (people who sought medical care)	hard to estimate	France
---	--------------------------------------	------------	---	------------------	--------

ORIGINAL UNEDITED MANUSCRIPT