



HAL
open science

Spatio-temporal information propagation using sparse observations in hyper-resolution ensemble-based snow data assimilation

Esteban Alonso-González, Kristoffer Aalstad, Norbert Pirk, Marco Mazzolini, Désirée Treichler, Paul Leclercq, Sebastian Westermann, Juan Ignacio López-Moreno, Simon Gascoin

► To cite this version:

Esteban Alonso-González, Kristoffer Aalstad, Norbert Pirk, Marco Mazzolini, Désirée Treichler, et al.. Spatio-temporal information propagation using sparse observations in hyper-resolution ensemble-based snow data assimilation. *Hydrology and Earth System Sciences*, 2023, 27 (24), pp.4637 - 4659. 10.5194/hess-27-4637-2023 . hal-04570290

HAL Id: hal-04570290

<https://hal.science/hal-04570290>

Submitted on 7 May 2024

HAL is a multi-disciplinary open access archive for the deposit and dissemination of scientific research documents, whether they are published or not. The documents may come from teaching and research institutions in France or abroad, or from public or private research centers.

L'archive ouverte pluridisciplinaire **HAL**, est destinée au dépôt et à la diffusion de documents scientifiques de niveau recherche, publiés ou non, émanant des établissements d'enseignement et de recherche français ou étrangers, des laboratoires publics ou privés.



Spatio-temporal information propagation using sparse observations in hyper-resolution ensemble-based snow data assimilation

Esteban Alonso-González¹, Kristoffer Aalstad², Norbert Pirk², Marco Mazzolini², Désirée Treichler², Paul Leclercq², Sebastian Westermann², Juan Ignacio López-Moreno³, and Simon Gascoin¹

¹Centre d'Etudes Spatiales de la Biosphère, Université de Toulouse, CNRS/CNES/IRD/INRAE/UPS, Toulouse, France

²Department of Geosciences, University of Oslo, Oslo, Norway

³Instituto Pirenaico de Ecología, Spanish National Research Council (IPE-CSIC), Zaragoza, Spain

Correspondence: Esteban Alonso-González (esteban.alonso-gonzalez@univ-tlse3.fr)

Received: 9 May 2023 – Discussion started: 8 August 2023

Revised: 30 October 2023 – Accepted: 12 November 2023 – Published: 22 December 2023

Abstract. Data assimilation techniques that integrate available observations with snow models have been proposed as a viable option to simultaneously help constrain model uncertainty and add value to observations by improving estimates of the snowpack state. However, the propagation of information from spatially sparse observations in high-resolution simulations remains an under-explored topic. To remedy this, the development of data assimilation techniques that can spread information in space is a crucial step. Herein, we examine the potential of spatio-temporal data assimilation for integrating sparse snow depth observations with hyper-resolution (5 m) snow simulations in the Izas central Pyrenean experimental catchment (Spain). Our experiments were developed using the Multiple Snow Data Assimilation System (MuSA) with new improvements to tackle the spatio-temporal data assimilation. Therein, we used a deterministic ensemble smoother with multiple data assimilation (DESMDA) with domain localization.

Three different experiments were performed to showcase the capabilities of spatio-temporal information transfer in hyper-resolution snow simulations. Experiment I employed the conventional geographical Euclidean distance to map the similarity between cells. Experiment II utilized the Mahalanobis distance in a multi-dimensional topographic space using terrain parameters extracted from a digital elevation model. Experiment III utilized a more direct mapping of snowpack similarity from a single complete snow depth map together with the easting and northing coordinates. Although all experiments showed a noticeable improvement in the

snow patterns in the catchment compared with the deterministic open loop in terms of correlation ($r = 0.13$) and root mean square error (RMSE = 1.11 m), the use of topographical dimensions (Experiment II, $r = 0.63$ and RMSE = 0.89 m) and observations (Experiments III, $r = 0.92$ and RMSE = 0.44 m) largely outperform the simulated patterns in Experiment I ($r = 0.38$ and RMSE = 1.16 m). At the same time, Experiments II and III are considerably more challenging to set up. The results of these experiments can help pave the way for the creation of snow reanalysis and forecasting tools that can seamlessly integrate sparse information from national monitoring networks and high-resolution satellite information.

1 Introduction

Covering nearly half the land surface of the Northern Hemisphere every year (Déry and Brown, 2007), the snowpack is a major component of the terrestrial cryosphere. Its reflective, insulating, and large water storage capacity makes the snowpack a key modulator of biogeophysical and biogeochemical processes in the areas where it is present (Zhang, 2005; DeWalle and Rango, 2008). It controls the ecology of cold regions (Slatyer et al., 2022; Pirk et al., 2023), and provides key freshwater resources to snow-dominated areas and large downstream regions (Mankin et al., 2015). The mass and duration of the global snow cover has been reduced by

recent climate change (Pulliainen et al., 2020), and it is anticipated that these impacts will continue in the coming decades (Mudryk et al., 2020). All this highlights the increasing need for monitoring the snowpack, both to evaluate the impacts of climate change on the cryosphere and to design better adaptation strategies (Sturm et al., 2017).

Snowpack monitoring is a difficult task, particularly in remote regions where meteorological conditions are often severe and logistics are challenging (Fayad et al., 2017). The snowpack exhibits a significant degree of spatial variability (López-Moreno et al., 2013), especially in areas of complex topography, as a result of processes such as preferential deposition, wind redistribution, and avalanching (Comola et al., 2019; Vionnet et al., 2021). This complexity calls into question the representativeness of the typically sparse point-scale snow measurements from automatic weather stations as well as those performed during manual field campaigns. For these reasons, numerical snowpack simulations are widely used for both scientific and operational goals. Using physically based energy and mass balance models it is possible to continuously (i.e. without gaps in space and time) simulate the state of the snowpack represented through a number of variables that are currently difficult to estimate directly from observations. This includes the snow water equivalent (SWE), which is of great interest for hydrologists as it constitutes a direct estimate of the freshwater resources stored in the snowpack. Unfortunately, numerical snowpack models require accurate high spatio-temporal resolution meteorological forcing, which is often difficult to obtain. The uncertainties in the forcing propagate through the snowpack numerical models inducing strong biases in the simulations. In fact, snowpack simulation errors tend to mostly originate from the uncertainty in the forcing, rather than a lack of knowledge concerning snow physics (Raleigh et al., 2016). Apart from the uncertainty induced by the forcing, redistribution processes may cause strong differences between simulations and reality. Despite recent model developments, explicitly accounting for wind- and avalanche-driven snow redistribution remains challenging and introduces yet further degrees of freedom in the modelling exercise.

Earth observation satellites provide information on various snow-related variables such as the snow cover extent, snow depth, snow surface temperature or albedo. However, remote sensing observations are limited by revisit times, spatial resolution, cloud obstruction, viewing geometry and spectral resolution (Ju and Roy, 2008; Dozier et al., 2008). As a result, it is not yet possible to generate spatially continuous maps of these variables with a sufficient temporal resolution in near real time (e.g. daily). In addition, remote sensing does not enable the retrieval of key snow variables such as the SWE in mountain regions (Dozier et al., 2016).

Data assimilation (DA) has emerged as a promising method for enhancing uncertain numerical snowpack simulation results using available in situ or remotely sensed observations (Largeron et al., 2020). The use of DA methods

allows for the correction of errors in meteorological forcing, resulting in improved predictions of snow models through the incorporation of the information distilled from observations while taking into account their associated uncertainties. In particular, the assimilation of in situ and remote sensing products has already been shown to improve snow simulations, including in situ snow depth (Smyth et al., 2019), fractional snow-covered area (Aalstad et al., 2018), land surface temperature (Alonso-González et al., 2022b), albedo (Kumar et al., 2020), or even assimilating satellite reflectances directly (Revuelto et al., 2021b). If the objective is to reconstruct the SWE distribution in the absence of direct SWE observations, snow depth is likely the most useful variable since it explains most of the SWE variability in many regions (Sturm et al., 2010). Assimilating snow depth also enables one to benefit from the wealth of in situ snow depth measurements from automatic stations or manual sampling (Smyth et al., 2019) or from emerging satellite products (Marti et al., 2016; Lievens et al., 2022; Deschamps-Berger et al., 2022). Unfortunately, the assimilation of in situ or remotely sensed snow depth poses several challenges. One major challenge is the mismatch in scale between the sparse spatial sampling of in situ or altimetry-based snow depth measurements and the gridded or semi-distributed geometry of the simulations (Molotch and Bales, 2005). Even imagery-based remote sensing approaches to retrieve snow depth can present considerable spatial gaps due to orbital constraints, sensor swath or the presence of clouds in the image. This results in a vast number of model grid cells that lack local observations, requiring the propagation of information from observed to unobserved areas within snow DA frameworks to be able to fully exploit existing monitoring systems.

Despite the aforementioned issues, the question of spatial information transfer has thus far received relatively little attention from land surface modellers in general (De Lannoy et al., 2022) and snow modellers in particular. Spatio-temporal DA, also known as “3D” DA, has the benefit of propagating information from observations both in time and space with the potential to fill gaps in otherwise sparse observations (Reichle and Koster, 2003). At the same time, unlike purely temporal (i.e. 1D) DA, defined here as the case where each spatial unit is treated independently, adding spatial dimensions vastly increases the dimensionality of the underlying Bayesian inference problem when performing a global (domain-wide) analysis. This makes spatio-temporal DA more challenging to implement in practice than temporal DA. For example, with ensemble-based DA methods a global analysis would often require an intractable exponential increase in ensemble size to avoid degeneracy (Bocquet et al., 2017; Farchi and Bocquet, 2018).

Thanks to developments fuelled by operational numerical weather prediction (Houtekamer and Zhang, 2016; Bannister, 2017), tailor-made methods exist that make ensemble-based DA feasible even for extremely high-dimensional spatio-temporal problems with on the order of 1 billion state

variables. These are known as “localization methods” (Sakov and Bertino, 2011; Chen and Oliver, 2017), which can be split in two distinct types: covariance localization and domain localization (also known as “local analysis”). Both localization methods effectively alleviate computational issues by limiting the radius of influence of observations, thus reducing the spatio-temporal dimensionality of the DA problem. These methods are often applied as a remedy to spurious correlations that can cause unphysical or extreme long-range information transfer from observations. Spurious correlations are, however, only a symptom of the limited ensemble size in high-dimensional problems, which can lead to a deficiency of the low rank approximation of ensemble Kalman methods (Sakov and Bertino, 2011; Evensen et al., 2022) and make particle methods degenerate (Farchi and Bocquet, 2018). Given an infinite ensemble size these issues would disappear, but for all practical purposes they remain a major concern. This makes localization indispensable for designing functioning high-dimensional spatio-temporal DA systems.

Despite receiving considerably less attention than its temporal counterpart, some examples of spatio-temporal snow DA can be found. De Lannoy et al. (2010) investigated spatio-temporal assimilation of synthetic coarse-scale (25 km) passive microwave SWE retrievals in high-resolution (1 km) simulations of the Noah land surface model using the ensemble Kalman filter (EnKF) with covariance localization based on horizontal distance. In a follow-up study, De Lannoy et al. (2012) performed similar spatio-temporal experiments but using real data, showing the added value of jointly assimilating passive microwave and optical retrievals at different resolutions. Magnusson et al. (2014) performed spatio-temporal assimilation experiments using the EnKF and optimal interpolation with 3D (horizontal and vertical) localization, effectively transferring information from ground-based point SWE observations into a distributed snow model over Switzerland. More recent studies have suggested different strategies using particle filters (PF) for spatio-temporal snow DA. Cantet et al. (2019) adopted a heuristic approach to propagate information from sparse SWE observations over the Canadian province of Quebec using a PF with spatio-temporally correlated perturbations by performing isolated analyses for grid cells where observations were available and subsequently spatially interpolating the posterior weights. This methodology was further developed by Odry et al. (2022), who suggested using the Schaake shuffle method (Clark et al., 2004) in order to alleviate spatial discontinuities that can arise when resampling. Cluzet et al. (2021) suggested alternative promising approaches to spatio-temporal snow DA using a PF in synthetic experiments with a semi-distributed geometry by combining a form of domain localization with observation error inflation. Cluzet et al. (2022) extended these approaches using data from a real snow depth observation network over the French Alps and Pyrenees, showing marked improvements compared to both

the open-loop and the current operational approach of Météo-France.

The aforementioned spatio-temporal snow DA studies were typically performed at moderate resolution, in semi-distributed geometries, and/or using relatively simple snow models. In addition, the quantification of the spatial relationships between cells was typically derived from the Euclidean distance. Including a measure of the elevation proximity between cells helped to account for large differences in SWE for cells that were close in the horizontal dimension but located at different elevations (Magnusson et al., 2014). However, at hyper-spatial resolution (e.g. 5 m), the behaviour of the snowpack is also correlated with other topographic variables such as slope, aspect, etc. (López-Moreno et al., 2017; Elder et al., 1991; Revuelto et al., 2020), which modulate key processes such as incoming radiation (Liston and Elder, 2006; Baba et al., 2019) and snow redistribution by wind drift (Vionnet et al., 2021; Sharma et al., 2023). Hence, such topographical characteristics should also be considered in the DA process. It is thus necessary to define generalized distances in higher-dimensional spaces. In the context of the ongoing proliferation of high-resolution satellite data and with the objective of maximizing these data together with the benefits of point-scale observations in snow DA, it is imperative to push the current limits of these techniques so as to improve fine-scale snow simulations. In this paper we explore the potential of sparse snow depth observations to update hyper-resolution snowpack models using topographical variables in addition to the usual spatial dimensions so as to maximize the contribution of observations to the analysis. We have implemented this new spatio-temporal information propagation capability such that it can be applied to a plethora of emerging snow DA scenarios. We present the results from three experiments based on real (rather than synthetic) data that explore increasingly sophisticated approaches to information propagation in hyper-resolution snow DA.

2 Data and methods

2.1 Observations and meteorological forcing

This work is based on the data available from a time series of 12 hyper-resolution (5 m spatial resolution) snow depth maps collected during a single snow season over the Izas experimental catchment in the Pyrenees (55 ha Revuelto et al., 2017) (Fig. 1). The maps were retrieved from fixed-wing drone surveys using structure from motion techniques. The drone surveys were conducted in 2020 on 14 January; 3 and 24 February; 11 March; 29 April; 3, 12, 19 and 26 May; and 2, 10 and 21 June. Several surveys were conducted before peak accumulation (estimated to be in mid-March) but the late snowmelt season in May and June was sampled most densely. This dataset has been extensively validated (Revuelto et al., 2021a, c) and ingested in purely tem-

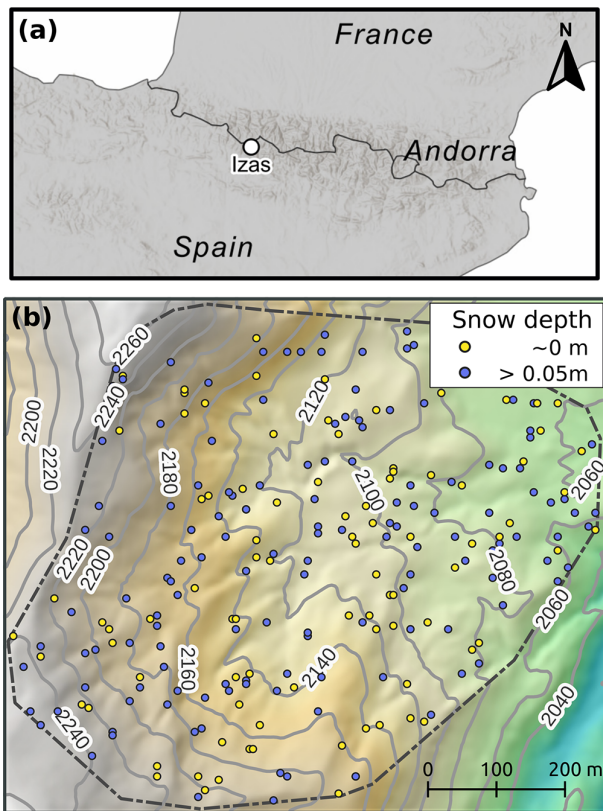


Figure 1. Location of the Izas experimental catchment in the central Spanish Pyrenees (a). Topography of the catchment derived from a summer drone survey, and a hillshade map showing cells (circles) where observations were obtained from the random sampling strategy during the observational period in 2020. The colour indicates whether the cells had snow cover (defined as snow depth over 5 cm) at the time of the observation (b).

poral snow DA experiments in a previous study (Alonso-González et al., 2022a). According to these previous experiments, the error variance of the observations was assumed to be $\sigma_y^2 = 0.04 \text{ m}^2$.

We used these maps to generate sparse observations to be assimilated by randomly selecting 20 cells among all the available grid cells for every map. The complete maps were also used to evaluate the posterior simulations. We assumed that the snow depth maps were an independent source of evaluation given that the assimilated observations only represent 0.11 % of the 18 442 simulated grid cells. The random draw of 20 cells was performed independently for each map, emulating a real case where an observer makes sporadic snow depth probe measurements throughout the snow season. The random sampling led to the selection of several snow-free cells, because many snow surveys were conducted late in the snow season (Fig. 1).

We used a meteorological forcing dataset that was previously generated by Alonso-González et al. (2022a) using the MicroMet meteorological distribution system (Liston and El-

der, 2006). MicroMet was applied to downscale hourly outputs of the ERA5 atmospheric reanalysis from their native resolution of 0.25° (Hersbach et al., 2020) to the same 5 m grid as the drone observations.

This meteorological forcing was used to drive the Multiple Snow Data Assimilation System (MuSA, Alonso-González et al., 2022a). MuSA is an open-source snow DA toolbox. It is designed to assimilate observations into simulations generated by the energy and mass balance model – the Flexible Snow Model (FSM2 Essery, 2015) – or other snow models. It was necessary to include several modifications in the MuSA code, as detailed in Sect. 2.4. All the experiments were performed using the most complex parameterization scheme of FSM2, as it is the default configuration of MuSA. In MuSA, FSM2 is run in a distributed fashion but in its current version the wind redistribution is not simulated. We expect the spatio-temporal DA to be able to mimic the wind redistribution process implicitly by correcting the precipitation scaling parameters.

2.2 Spatio-temporal data assimilation

Data assimilation is a term used in the geosciences for the ubiquitous exercise of combining models with observations (Carrassi et al., 2018). This exercise often becomes quite a formidable computational challenge to implement in practical DA when complex mechanistic models and real observations are involved. Several approaches have been developed to deal with the computational challenge of combining models with observations (Evensen et al., 2022; Murphy, 2023). These can broadly be divided into Monte Carlo and variational techniques. Since the latter involves the computation of gradient terms (Bannister, 2017) that can be non-trivial, it has been rarely used for snow DA to date. As such, Monte Carlo techniques (Chopin and Papaspiliopoulos, 2020) are widely used in snow DA, with the most common approaches being ensemble Kalman and particle methods (see Alonso-González et al., 2022a, and references therein). The application of particle methods to high-dimensional problems, such as those that arise in spatio-temporal settings, remains an outstanding challenge at the research frontier of DA due to particle degeneracy that occurs in the absence of robust particle localization methods (Farchi and Bocquet, 2018).

In this work we focus on ensemble Kalman methods which lend themselves well to spatio-temporal DA thanks to their Gaussian properties and the compatibility with localization methods, as is clear from existing practices in the broader DA community (Sakov and Bertino, 2011; Chen and Oliver, 2017; Evensen et al., 2022). Indeed, ensemble Kalman methods are closely related to many spatial modelling techniques, including kriging (Krige, 1951; Matheron, 1963) methods in geostatistics (Bertino et al., 2003; Chilès and Delfiner, 2012) and the nearly equivalent optimal interpolation (Eliassen, 1954; Gandin, 1963) methods that are widely used in operational DA (Talagrand, 1997; de Rosnay et al., 2014). What

sets the ensemble Kalman methods apart from these methods is the use of a non-linear mechanistic dynamical model for probabilistic prediction. The intimate relationship between these methods is not surprising given that they can be viewed as special cases of a more general mathematical concept known as a “Gaussian process” (Rasmussen and Williams, 2005), which is widely used both in statistics (Cressie and Wikle, 2011; Wikle et al., 2019) and machine learning (MacKay, 2003; Murphy, 2022, 2023).

In spatio-temporal DA, information from observations can be spread across multiple grid cells through non-local observations, correlated observation error or prior dependence (van Leeuwen, 2019). Non-local observations are observations that cannot be confined to a single model grid cell, as is the case when the resolution of the observations is coarser than that of the model (e.g. De Lannoy et al., 2012). Although it is important to correctly account for the effects of such non-local observations in DA (van Leeuwen, 2019), they are not pertinent to the case of local sparse observations considered in this study. Moreover, non-local observations only affect the grid cells that their support overlaps with and thus do not help resolve the challenge of transferring information from observed to unobserved locations. Not accounting for correlated observation errors, which occur frequently in satellite remote sensing, can also degrade the performance of the assimilation (Carrassi et al., 2018). In this study, based on our knowledge of the drone observations outlined in Revuelto et al. (2021a, c), we make the common assumption that the observation errors are uncorrelated by assigning a diagonal observation error covariance matrix of the form $\mathbf{R} = \sigma_y^2 \mathbf{I}$. Moreover, despite their potential importance, including observation error correlations would not in itself allow for information transfer from observed to unobserved locations. This leaves prior dependence as the sole mechanism that permits information to be transferred from sparse local observations to unobserved locations. It is this mechanism, explained in detail in Appendix A, that we exploit in this study.

2.2.1 Ensemble generation

Monte Carlo methods in general and ensemble Kalman methods in particular require the use of an ensemble (i.e. a collection) of model realizations. To generate the prior ensemble of simulations, we used time invariant (within a water year) prior parameter ensemble to perturb the precipitation (multiplicative) and air temperature (additive) forcing variables. To bound these parameters within certain limits while satisfying the Gaussian prior assumption of ensemble Kalman methods, they were drawn from logit-normal distributions as outlined in (Aalstad et al., 2018). The parameters are updated with the ensemble Kalman analysis step in the transformed (Gaussian) space but fed through the forward model in the physical (untransformed) space (Alonso-González et al., 2022a). As such, we adopt a forcing formulation of the DA problem (Evensen et al., 2022) where

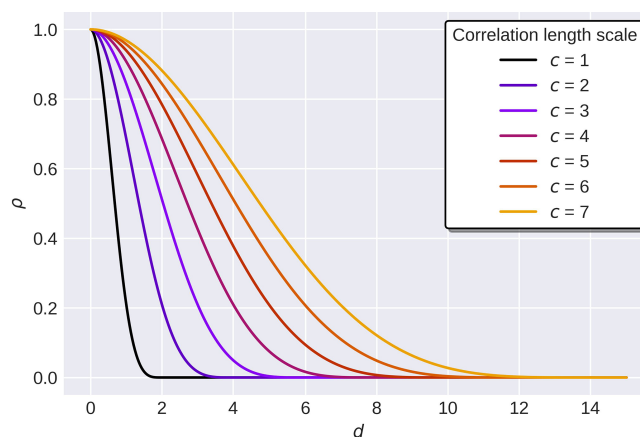


Figure 2. Example of correlation values (ρ) estimated from distances (d) by the Gaspari and Cohn function for different correlation length scales.

model parameters are directly updated leading to indirectly but dynamically consistent updates in the model states. The mean μ_0 and standard deviation σ_0 of the underlying normal distribution hyper-parameters in transformed space, control the shape of our weakly informative prior probability distributions (Banner et al., 2020). These hyper-parameters were selected based on prior predictive checks and conservative expectations of the range of uncertainty in the meteorological forcing, which we distilled from experience obtained in previous studies at Izas. For temperature, the prior additive perturbation parameters were drawn from a logit-normal distribution bounded between -8 and 8 K, with hyperparameters $\mu_0 = 0$ and $\sigma_0 = 0.5$. In physical space this corresponds to a right-skew logit-normal distribution with a median (interquartile range) of 0 (-1.34 – 1.34). The prior multiplicative perturbation parameters for precipitation were drawn from a logit-normal distribution bounded between 0 and 8 with $\mu_0 = -1.6$ and $\sigma_0 = 1$. In physical space this corresponds to a symmetric logit-normal distribution with a median (interquartile range) of 1.34 (0.75 – 2.27). The number of ensemble members was fixed at $N_e = 100$ for all experiments.

Each of the transformed prior perturbation parameters were drawn from independent high-dimensional multivariate normal distributions (i.e. in the transformed space) by constructing prior spatial covariance matrices. This prior dependence structure allows for associations between the parameters in all the grid cells in our domain, which is key for information propagation as outlined in Appendix A. For simplicity, the temperature and precipitation perturbation parameters were assumed to be independent but it would also be possible to consider a correlation between parameter types. To generate the prior spatial covariance matrices we first used the 5th-order piecewise rational function proposed by Gaspari and Cohn (1999) (their Eq. 4.10), henceforth referred to as “GC” (Fig. 2). The GC functions is widely used for localization (Sakov and Bertino, 2011; Chen and Oliver, 2017)

to generate a prior correlation matrix based on the pairwise distances between grid cells in the simulation:

$$\rho(d, c) = \begin{cases} -\frac{1}{4}\left(\frac{d}{c}\right)^5 + \frac{1}{2}\left(\frac{d}{c}\right)^4 + \frac{5}{8}\left(\frac{d}{c}\right)^3 - \frac{5}{3}\left(\frac{d}{c}\right)^2 + 1, & \text{for } 0 \leq \left(\frac{d}{c}\right) \leq 1, \\ \frac{1}{12}\left(\frac{d}{c}\right)^5 - \frac{1}{2}\left(\frac{d}{c}\right)^4 + \frac{5}{8}\left(\frac{d}{c}\right)^3 + \frac{5}{3}\left(\frac{d}{c}\right)^2 - 5\left(\frac{d}{c}\right) + 4 - \frac{2}{3}\left(\frac{d}{c}\right)^{-1}, & \text{for } 1 \leq \frac{d}{c} \leq 2, \\ 0, & \text{for } \frac{d}{c} > 2, \end{cases} \quad (1)$$

where d/c is a normalization of the distance d between a pair of grid cells by the correlation length scale c . With this GC function, the correlation drops off rapidly from 1 at $d = 0$ to 0.5 at $d \simeq 0.68c$ and finally to 0 at $d = 2c$. The correlation length scale c thus plays an important role as a hyperparameter that should be tuned in a sensitivity analysis or determined empirically from data using geostatistical methods (Chilès and Delfiner, 2012). In DA, the continuous distance d in the GC function is typically discretized to a Euclidean distance between two spatial grid cells defined in 2D (easting and northing) or 3D (with elevation) geographic space. The concept can be generalized, however, to be any measure of distance between two grid cells as detailed in Sect. 2.3. In our experiments, we selected two different values of the hyperparameter c after manual tuning. For Experiment I $c = 100$, while for Experiments II and III $c = 5$ (Sect. 2.3). The difference in the magnitude of the c value in the different experiments is a consequence of the covariance-based normalization of the distance matrix ($\mathbf{D} = [d_{ij}]$) in Experiments II and III.

Based on the correlations calculated from the GC function, we construct a correlation matrix $\boldsymbol{\rho}$ with dimensions $N_g \times N_g$ where N_g is the total number of grid cells in our domain. This matrix contains the prior spatial correlations for a particular (transformed) perturbation parameter. In general, both the choice of distance d and cutoff c can differ between perturbation parameters, but for simplicity here we kept them the same for both the temperature and precipitation perturbation parameters. Through the close relationship between correlation and covariance, it is then possible to construct a prior covariance matrix \mathbf{C}_0 by also taking into account the column vectors $\boldsymbol{\sigma}_0$ that contain the prior standard deviations of the transformed perturbation parameters across the domain through

$$\mathbf{C}_0 = \boldsymbol{\rho} \odot (\boldsymbol{\sigma}_0 \boldsymbol{\sigma}_0^T), \quad (2)$$

where \odot is the element-wise product and $(\cdot)^T$ denotes the transpose. This is a general expression which happens to simplify in our case since we assume that the prior standard deviations are constant in space, such that $\boldsymbol{\sigma}_0 \boldsymbol{\sigma}_0^T$ is just a constant matrix containing the prior variance. Given that \mathbf{C}_0 is positive definite, we can obtain its matrix square root via Cholesky factorization $\mathbf{C}_0 = \mathbf{L}_0 \mathbf{L}_0^T$ allowing us to sample an $N_g \times N_e$ matrix \mathbf{U}_0 of prior ensemble of transformed perturbation parameters \mathbf{U}_0 from the multivariate Gaussian prior $\mathcal{N}(\boldsymbol{\mu}_0, \mathbf{C}_0)$ through (Murphy, 2022)

$$\mathbf{U}_0 = \boldsymbol{\mu}_0 \mathbf{1}_{N_e}^T + \mathbf{L}_0 \boldsymbol{\zeta}, \quad (3)$$

where $\boldsymbol{\zeta} \sim \mathcal{N}(0, 1)$ is a $N_g \times N_e$ matrix of pseudo-random draws from a standard normal distribution and $\mathbf{1}_{N_e}$ is a $N_e \times 1$ vector of ones. We repeat this sampling for each of the perturbation parameters, effectively drawing both spatial prior ensembles independently, and then combine them to form a joint prior ensemble matrix \mathbf{U}_0 with $N_p \times N_g$ rows (where in our case we have $N_p = 2$ parameters) and N_e columns.

2.2.2 Data assimilation scheme

To perform the spatio-temporal DA, we employed the deterministic ensemble smoother with multiple data assimilation (DES-MDA) scheme introduced by Emerick (2018). We use this batch smoother scheme to directly update parameters (and indirectly update states) by simultaneously assimilating all available observations in the DA window as outlined in Algorithm 1.

Algorithm 1 DES-MDA with domain localization.

Require: N_e ensemble members, N_a assimilation cycles, N_g grid cells, N_p parameters, $\mathbf{D} = [d_{ij}]$ distance matrix ($N_g \times N_g$), $\mathbf{1}_{N_e}$ vector of ones ($N_e \times 1$), prior parameter ensemble matrix \mathbf{U}_0 from Eq. (3)

- 1: **for** $\ell = 0$ **to** N_a **do**
- 2: Run $N_g \times N_e$ forward simulations to obtain the complete spatio-temporal ensemble of internal states $\mathbf{V}_\ell = \mathcal{M}(\mathbf{U}_\ell)$ and predicted observations $\widehat{\mathbf{Y}}_\ell = \mathcal{H}(\mathbf{V}_\ell)$.
- 3: **if** $\ell < N_a$ **then**
- 4: **for** $i = 1$ **to** N_g **do**
- 5: Store the ensemble of parameters for this grid cell i and cycle ℓ in the $N_p \times N_e$ matrix $\mathbf{U}_\ell^{(i)}$.
- 6: Store the $N_o^{(i)}$ local observations satisfying $d_{ij} < 2c$ in the $N_o^{(i)} \times 1$ vector $\mathbf{y}^{(i)}$
- 7: Store the corresponding local predicted observations in the $N_o^{(i)} \times N_e$ matrix $\widehat{\mathbf{Y}}_\ell^{(i)}$
- 8: Build the localization matrices $\rho_{\mathbf{U}\widehat{\mathbf{Y}}}^{(i)}$ (size: $N_p \times N_o^{(i)}$) and $\rho_{\widehat{\mathbf{Y}}\widehat{\mathbf{Y}}}^{(i)}$ (size: $N_o^{(i)} \times N_o^{(i)}$) by extracting the corresponding entries from the $N_g \times N_g$ domain-wide GC correlation matrix ρ .
- 9: Compute the $N_p \times N_o^{(i)}$ local ensemble parameter-predicted observation covariance matrix $\mathbf{C}_{\mathbf{U}\widehat{\mathbf{Y}}}^{(i)} = \frac{1}{N_e} \mathbf{U}^{(i)'} \widehat{\mathbf{Y}}^{(i)'} \mathbf{T}$ where primes $(\cdot)'$ denote anomalies (deviations from the ensemble mean).
- 10: Compute the $N_o^{(i)} \times N_o^{(i)}$ ensemble predicted observation covariance matrix $\mathbf{C}_{\widehat{\mathbf{Y}}\widehat{\mathbf{Y}}}^{(i)} = \frac{1}{N_e} \widehat{\mathbf{Y}}^{(i)'} \widehat{\mathbf{Y}}^{(i)'} \mathbf{T}$
- 11: Compute the $N_p \times N_o^{(i)}$ localized ensemble Kalman gain matrix using subspace inversion (Emerick, 2016)

$$\mathbf{K}_\ell^{(i)} = \left[\rho_{\mathbf{U}\widehat{\mathbf{Y}}}^{(i)} \odot \mathbf{C}_{\mathbf{U}\widehat{\mathbf{Y}}}^{(\ell)} \right] \left(\left[\rho_{\widehat{\mathbf{Y}}\widehat{\mathbf{Y}}}^{(i)} \odot \mathbf{C}_{\widehat{\mathbf{Y}}\widehat{\mathbf{Y}}}^{(\ell)} \right] + \alpha^{(\ell)} \mathbf{R} \right)^{-1}, \tag{4}$$

where $\mathbf{R} = \sigma_y^2 \mathbf{I}_{N_o^{(i)}}$ is the diagonal local observation error covariance matrix with constant inflation $\alpha^{(\ell)} = N_a$.
- 12: Update the ensemble mean $\bar{\mathbf{u}}_\ell^{(i)} = \frac{1}{N_e} \mathbf{U}_\ell^{(i)} \mathbf{1}_{N_e}$ through

$$\bar{\mathbf{u}}_{\ell+1}^{(i)} = \bar{\mathbf{u}}_\ell^{(i)} + \mathbf{K}_\ell^{(i)} \left[\mathbf{y}^{(i)} - \bar{\mathbf{y}}_\ell^{(i)} \right], \tag{5}$$

where $\bar{\mathbf{y}}_\ell^{(i)} = \frac{1}{N_e} \widehat{\mathbf{Y}}_\ell^{(i)} \mathbf{1}_{N_e}$ contains the ensemble mean predicted observations.
- 13: Update the ensemble anomalies $\mathbf{U}_\ell^{(i)'} = \mathbf{U}_\ell^{(i)} - \bar{\mathbf{u}}_\ell^{(i)} \mathbf{1}_{N_e}^T$ using $\mathbf{Y}^{(i)} = \mathbf{y}^{(i)} \mathbf{1}_{N_e}^T$ through

$$\mathbf{U}_{\ell+1}^{(i)'} = \mathbf{U}_\ell^{(i)'} - 0.5 \mathbf{K}_\ell^{(i)} \left[\mathbf{Y}^{(i)} - \widehat{\mathbf{Y}}_\ell^{(i)} \right]. \tag{6}$$
- 14: Combine the mean and anomalies to obtain the updated ensemble $\mathbf{U}_{\ell+1}^{(i)} = \bar{\mathbf{u}}_{\ell+1}^{(i)} \mathbf{1}_{N_e}^T + \mathbf{U}_{\ell+1}^{(i)'}$
- 15: **end for**
- 16: **end if**
- 17: **end for**

Herein, the DA window is 1 water year and the parameters are updated independently for each water year. This DES-MDA is a deterministic version of the original (stochastic) ensemble smoother with multiple DA (ES-MDA; Emerick and Reynolds, 2013), inspired by the deterministic ensemble Kalman filter (DEnKF; Sakov and Oke, 2008), which is a deterministic version of the classic (stochastic) ensemble Kalman filter (EnKF; Evensen, 1994; Burgers et al., 1998). Unlike the stochastic schemes, these deterministic schemes do not require perturbing the actual or modelled observations (van Leeuwen, 2020), so that sampling errors are reduced while maintaining sufficient ensemble spread (Sakov and Oke, 2008). The DEnKF thus serves the same purpose as “square root” EnKF schemes, such as the local ensemble transform Kalman filter (LETKF; Hunt et al., 2007), which are widely used operationally (Houtekamer and Zhang, 2016), but it is considerably easier to implement. Moreover, it allows for both covariance localization and subspace inversion (Emerick, 2018). We use a (batch) smoother rather than a filter to allow information from the observations to propagate backwards in time, since this has been shown to lead to better snowpack reconstruction (Alonso-González et al., 2022a). In operational snow hydrology settings, notably for forecast initialization, filtering may be preferable due to computational constraints. The iterative ensemble Kalman methods used herein could nonetheless readily be extended to filtering (Sakov and Oke, 2008; Emerick and Reynolds, 2012). Although the iterations incur an additional computational cost, they allow for likelihood tempering (Stordal and Elsheikh, 2015) that leads to improved performance compared to non-iterative methods when the model mapping from parameters to observations is non-linear Emerick and Reynolds (2013); Alonso-González et al. (2022a); Pirk et al. (2022); Evensen et al. (2022). The snow DA problem addressed herein falls under this non-linear category.

2.3 Experimental set-up

In the modelling pipeline, a crucial step is the determination of the distances between grid cells in the simulation domain. This is typically accomplished through the calculation of the pairwise Euclidean distance between cells. The Euclidean distance between two cells is the Euclidean norm

$$d_{ij}^{(E)} = \sqrt{\mathbf{d}_{ij}^T \mathbf{d}_{ij}}, \tag{7}$$

where the vector $\mathbf{d}_{ij} = \mathbf{r}_i - \mathbf{r}_j$ is the difference between the generalized coordinates $\mathbf{r} \in \mathbb{R}^K$ of two cells. Using Eq. (7) the pairwise Euclidean distance between all cells in the domain can be computed and stored in a $N_g \times N_g$ symmetric matrix $\mathbf{D} = [d_{ij}]$ with zeros on the diagonal, which can then be used to define prior correlation from Eq. (1) and covariance from Eq. (2) matrices.

As explained in the Introduction, we aim to incorporate topographical dimensions in our distance calculations. Thus, it is necessary to account for the differences in the units and the

potential correlation between these additional dimensions. To do so, we employ the Mahalanobis distance (e.g. Murphy, 2022) that both standardizes the respective dimensions and takes into account the correlation between them through a covariance-based normalization. The Mahalanobis distance between two grid cells is computed as follows:

$$d_{ij}^{(M)} = \sqrt{\mathbf{d}_{ij}^T \mathbf{S}^{-1} \mathbf{d}_{ij}}, \quad (8)$$

where \mathbf{S} is the $K \times K$ sample covariance matrix computed of the generalized coordinates $\mathbf{r} \in \mathbb{R}^K$ of all the N_g grid cells in the domain. The use of dimensions other than the usual spatial ones in the definition of \mathbf{r} opens up a vast array of possibilities that are not restricted to topographical features only. Thus, any characteristic of the domain could be used to map the similarity between cells, including climatological characteristics such as distance to the ocean as a proxy for continentality at larger scales and coarser resolutions. Another option is to use remotely sensed observations to define a distance that directly maps the similar behaviour of the cells within a domain in terms of snow-related variables, such as snow cover duration.

In this study, we propose three experiments using different distances to construct the prior covariance and explore the potential for spatio-temporal snow DA at hyper resolution:

- Experiment I: The prior covariance was constructed using the Euclidean distance in a two horizontal dimensions (easting and northing) space as is typically done in 3D land DA (Reichle and Koster, 2003; De Lannoy et al., 2010).
- Experiment II: The prior covariance was constructed using the Mahalanobis distance in a high-dimensional space that includes three spatial dimensions (easting, northing and elevation) along with four additional topographic dimensions described below.
- Experiment III: The prior covariance was constructed using the Mahalanobis distance in a space composed of two horizontal dimensions and one snow depth dimension based on a snow depth map obtained early in the water year (14 January 2020).

In Experiment II, the topographic parameters that define the additional dimensions are the topographic position index (TPI, with a search distance of 25 m), slope, diurnal anisotropic heating index and maximum upwind slope index (search distance 15 m, main wind direction 315°). These topographic parameters (as well as their hyperparameters) capture preferential snow deposition (TPI, wind) and melt (heating index) and were selected based on previous studies in the Izas catchment (Revuelto et al., 2020). Among these experiments, we expect the spatio-temporal snow DA in Experiment III to perform best since it incorporates information from a snow depth map that is directly related to snowpack

behaviour to construct the prior covariance. One-time snow depth maps are easier to acquire than annually/monthly repeated surveys and available for more catchments, and Experiment III is thus a plausible set-up. In a sense, we are to some extent committing a cardinal sin of circularity in Bayesian inference by using the drone data twice: both for constructing our prior and later for assimilation. Nonetheless, we only actually assimilate a minute fraction (0.11 %) of the data used to construct the prior. Moreover, only a single drone-based map enters the prior in Experiment III through a (generalized) distance-based correlation rather than through some form of direct insertion of empirical estimates of prior hyperparameters. Finally, the use of data to construct the prior falls under the domain of empirical Bayes (Efron and Hastie, 2016), which is widely used in both spatial statistics (Cressie and Wikle, 2011) and machine learning (Murphy, 2022). As such, one could classify Experiment III as a (very) mild form of empirical Bayes.

2.4 Computational set-up

All the spatio-temporal DA experiments were developed using MuSA. In fact, these new capabilities that we test in these experiments are packaged as an updated version of MuSA where spatio-temporal DA can be activated optionally while preserving the previous capabilities. A variety of different ensemble-based DA schemes were implemented in the original version of MuSA. For this study, we also added the deterministic ES-MDA (DES-MDA Emerick, 2018) to this list. To date, the MuSA system is the first to assimilate drone-based snow depth retrievals (Alonso-González et al., 2022a) and has also been used to study the potential of assimilating land surface temperature to improve snow water equivalent simulations in a synthetic experiment (Alonso-González et al., 2022b).

Several modifications of the MuSA code were necessary to implement spatio-temporal snow DA capabilities. In the original version of MuSA, each grid cell in the simulated domain was updated independently. This was due to the fact that both FSM2 and the DA schemes were purely temporal, in the sense that spatial grid cells did not interact, resulting in what is known in computer science as an embarrassingly parallel problem since it makes parallelization relatively trivial. However, spatio-temporal DA requires each grid cell to have access to both the observations and ensemble of predicted observations from nearby cells. What constitutes nearby will depend on the distance metric used (i.e. Eqs. 7 or 8) as well as the dimensions of the generalized coordinates $\mathbf{r} \in \mathbb{R}^K$ in which these distances are measured. This posed several computational challenges for the implementation of the spatio-temporal DA. In particular, it required a substantial modification of several MuSA routines that control the timing of the updates of each grid cell to avoid de-synchronizing the spatial simulations, especially in distributed computational facilities.

The MuSA framework was originally designed to be a noninvasive Python wrapper around the supported numerical snowpack model (FSM2) which simplifies implementing updated versions of this model and even altogether new models of any type. Staying true to this philosophy, the spatial propagation of information was handled using physical disk input/output (I/O) operations. This was designed also with the intention of alleviating the cost of storing many ensemble simulations in memory. Such a cost is possibly prohibitive in applications with a higher spatial density of observations, since each cell would have to store in memory the ensemble members for all the observed grid cells in its surroundings. Nonetheless, the computational problem became significantly more complex in terms of generating potential bottlenecks due to intensive I/O use. To overcome this problem we improved the performance of several internal routines by decreasing the numerical precision of many variables whenever possible and compressing the binary objects to be shared by I/O operations using the high-performance compressor Blosc (Blosc Development Team, 2023). These modifications allow MuSA to run spatial propagation experiments on both a local (single node) server and on distributed computing clusters where different nodes have to be synchronized, at an affordable cost. However, it is necessary to take into account that the computational cost of the simulation increases considerably when spatio-temporal DA is used. The experiments developed in this work were launched in the supercomputing facilities of the Centre National d'Études Spatiales. As a reference, 30 nodes were used, with 10 processors each. The experiments took around 5 h, but this estimate should be taken with caution. As the operation is I/O intensive, depending on the configuration of the simulations, the computing scheme and the spatial density of observations, the computational cost can vary tremendously even for the same domain and spatial resolution.

2.5 Evaluation

The results of the three proposed experiments were evaluated using different strategies. A small percentage of the available grid cells (0.11 % of each map) were included in the assimilation, and therefore the evaluation is essentially performed with independent data despite being compared with the drone data themselves. Even so, to ensure completely independent evaluation, the few cells included in the assimilation were not included in the evaluation metrics for the respective experiments.

As a first step, we compared the spatial patterns of snow depth from the simulations with a complete snow depth map retrieved close to peak SWE (11 March 2020). Different metrics were used to estimate the performance of the different experimental setups. We computed the cell-by-cell difference (error) between the reference map and the posterior mean of the ensembles. For all non-probabilistic metrics and visualizations, we always used the posterior ensemble mean as the

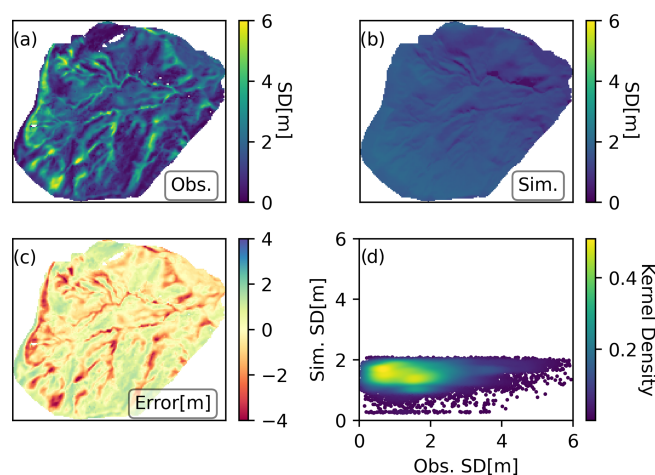


Figure 3. (a) Observed snow depth map on 11 March 2020 close to the peak accumulation. (b) Deterministic open loop (OL) simulated snow depth on the same date. (c) Difference between the OL and observed map (OL – Obs). (d) Scatter plot showing the OL versus observed snow depth for each 5 m pixel.

point estimates that we evaluate. To measure the performance of the posterior ensembles, we computed the cell-by-cell continuous ranked probability score (CRPS Hersbach, 2000), which is a metric for ensemble verification that generalizes the mean absolute error for probabilistic estimates. Due to the large number of grid cells, it was not feasible to store the complete spatio-temporal ensembles. Instead we output the ensemble mean and standard deviation, from which the CRPS was estimated based on a normal approximation of the posterior distribution of the snow depth (Gneiting et al., 2005).

To visually gauge the overall performance of the experiments, we generated scatter plots showing the simulated versus the observed snow depth for all grid cells in the domain. In addition, we computed two commonly used evaluation metrics: the root mean square error (RMSE) and the linear correlation coefficient (r). In order to check the spatial scale dependence of the results and how these agree with observations we computed the semivariograms (Chilès and Delfiner, 2012; Wikle et al., 2019) of the posterior mean from the DA experiments, the deterministic open-loop (no assimilation), and the drone map. The semivariogram was computed based on the horizontal Euclidean distance lag (or separation) ranging from 10 to 150 m using a bin size of 10 m. To evaluate the closeness between the reference semivariogram and the ones simulated by the proposed experiments, we compute the Fréchet distances between them, which provide an estimation of the dissimilarity between curves. Finally, we explored the continuous temporal evolution of the catchment total snow volume in the simulations and compared it with the evolution of the total snow volume from the 12 drone maps.

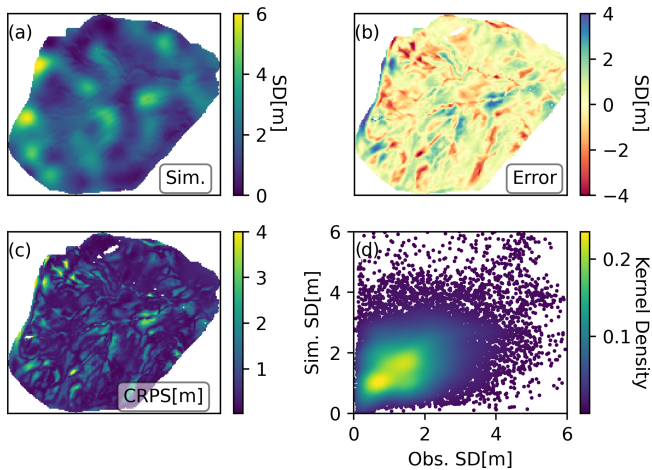


Figure 4. Experiment I results on 11 March 2020. (a) Posterior mean snow depth. (b) Difference between the posterior mean and observed snow depth. (c) CRPS between the posterior and the observed snow depth. (d) Scatter plot showing the posterior versus observed snow depth for each 5 m pixel.

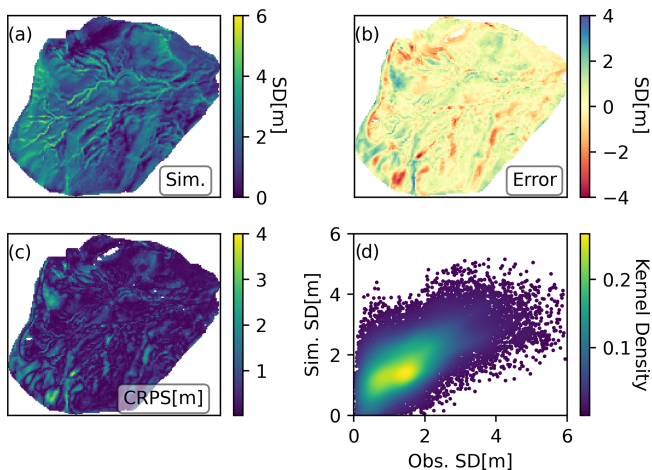


Figure 5. Experiment II results on 11 March 2020 presented in the same way as those of Experiment I in Fig. 4.

3 Results

The deterministic open loop (OL) model run was not able to reproduce the intricate spatial patterns of snow depth observed in the drone surveys (Fig. 3). Almost no spatial variability can be observed; the little variability that exists is most likely induced by the differences in the incoming short-wave radiation simulated by MicroMet. As a result of the poor representation of spatial variability in the snowpack and the complete lack of snow depths of more than 2 m, the OL simulation exhibited the worst performance relative to the observations among all the simulations with $r = 0.13$ and $\text{RMSE} = 1.11$ m.

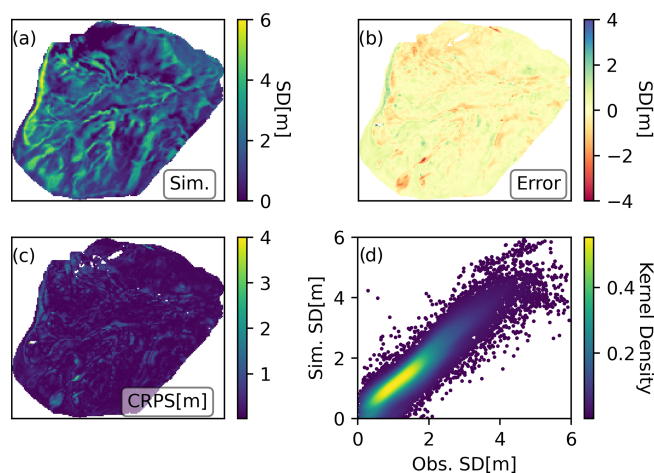
In all spatio-temporal DA experiments, both the distance-based prior covariance matrix and the localization had a strong impact on the DA performance. The results from Experiment I in Fig. 4 show the performance of the spatio-temporal DA when the horizontal Euclidean distance was used to construct the prior covariance and for domain localization. The use of spatio-temporal DA resulted in a posterior snowpack with considerably more spatial variability than the OL. The posterior simulation partly improved the evaluation metrics compared with the OL at least in terms of correlation ($r = 0.38$), albeit not in terms of the error ($\text{RMSE} = 1.16$ m). This indicates that although the shapes of the inferred spatial patterns in snow depth are more encouraging than in the OL, the posterior snow depths in Experiment I could still not accurately represent the distribution of the observed snow depth, as shown by the error and CRPS maps (Fig. 4b and c). Instead of the intricate spatial patterns of the snow depth observations that reflect wind-redistribution in complex topography, the blob-like Gaussian shape of the GC correlation function based on horizontal distance is evident in the posterior snow depth maps. As such, the point-by-point relation between the observations and posterior simulations (panel d) exhibits a large dispersion. This indicates that, at least for hyper-resolution snow simulations, the prior covariance structure was poorly specified in Experiment I.

The use of additional dimensions based on topographic parameters in the construction of the prior covariance matrix in Experiment II had a markedly positive impact on the performance of the posterior inference (Fig. 5). Compared to the OL or the use of horizontal Euclidean distance in Experiment I, the use of topography-based Mahalanobis distance led to a notable improvement in the evaluation and the resulting evaluation metrics with $r = 0.63$ and $\text{RMSE} = 0.89$ m. Furthermore, the incorporation of topographic dimensions enabled the emergence of complex spatial patterns in the simulation, resulting in a more realistic spatial snow depth distribution that more closely aligns with the intricate snow depth patterns shown by the drone-based observations. Despite the improvement in the simulation of spatial patterns in the snow depth distribution, certain obvious limitations are still evident. One notable limitation is the inability to accurately simulate the formation of the cornice at the north-western rim of the catchment. Due to its position at the boundary of the simulation domain, there is a strong domain boundary effect on the maximum upwind slope index, which makes it difficult to simulate this event. The cornice formation is also influenced by snow drift that is transported from the surrounding area outside of the simulated domain. In general, the discrepancies seem to follow the topographical characteristics of the terrain, as can be seen in the error and CRPS maps.

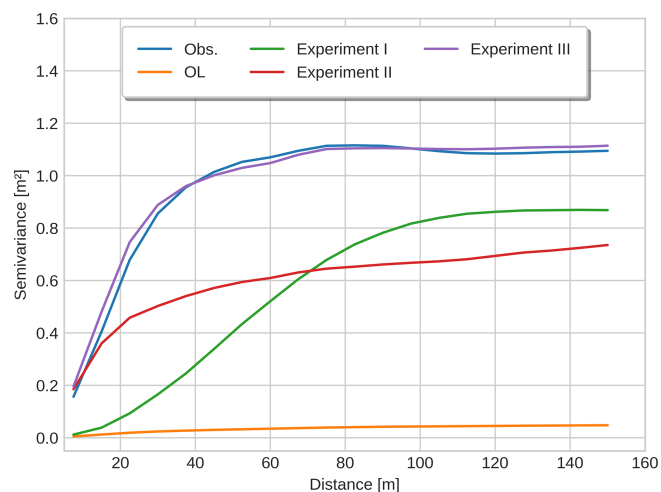
As expected, the posterior results in Experiment III, where a single drone-based snow depth map (14 January 2020) was used to construct the prior covariance, shows by far the most promising results relative to drone observations (11 March 2020), as shown in Fig. 6. The evaluation met-

Table 1. Summary of validation statistics for each of the snow depth drone maps and the mean for all the seasons. The highlighted values indicate the best performance value for each date.

Date	OL			Exp. I				Exp. II				Exp. III			
	Bias	RMSE	r	CRPS	Bias	RMSE	r	CRPS	Bias	RMSE	r	CRPS	Bias	RMSE	r
14 Jan	-0.06	0.69	0.18	0.41	0.09	0.73	0.33	0.32	0.13	0.55	0.65	0.11	0.05	0.22	0.95
3 Feb	-0.06	0.81	0.17	0.48	-0.17	0.87	0.36	0.38	0.18	0.65	0.65	0.09	0.05	0.20	0.97
24 Feb	-0.38	0.87	0.19	0.46	-0.13	0.81	0.39	0.35	-0.12	0.61	0.66	0.15	-0.17	0.28	0.96
11 Mar	-0.19	1.11	0.13	0.65	0.15	1.16	0.38	0.52	0.16	0.89	0.63	0.25	-0.01	0.45	0.92
29 Apr	-0.78	1.15	0.15	0.51	-0.25	0.92	0.38	0.46	-0.34	0.77	0.61	0.28	-0.24	0.46	0.90
3 May	-0.67	1.04	0.03	0.47	-0.25	0.85	0.38	0.50	-0.34	0.71	0.61	0.34	-0.23	0.43	0.89
12 May	-0.17	0.50	0.00	0.31	0.15	0.69	0.27	0.30	0.07	0.50	0.52	0.39	0.19	0.54	0.75
19 May	-0.30	0.57	0.00	0.31	-0.03	0.62	0.35	0.35	-0.13	0.48	0.51	0.39	0.01	0.42	0.80
26 May	0.00	0.31	0.18	0.18	0.15	0.47	0.29	0.15	0.08	0.32	0.38	0.16	0.16	0.37	0.66
2 Jun	-0.02	0.18	0.14	0.09	0.06	0.33	0.23	0.06	0.00	0.20	0.25	0.07	0.04	0.23	0.52
10 Jun	0.01	0.11	0.00	0.16	0.07	0.28	0.14	0.13	0.03	0.13	0.15	0.23	0.04	0.17	0.31
21 Jun	0.01	0.07	0.00	0.14	0.05	0.21	0.05	0.10	0.01	0.08	0.03	0.14	0.02	0.09	0.14
Mean	-0.22	0.62	0.09	0.35	0.02	0.66	0.30	0.30	-0.02	0.49	0.47	0.22	-0.01	0.32	0.73

**Figure 6.** Experiment III results on 11 March 2020 presented in the same way as those of Experiment I in Fig. 4.

rics were also considerably better than any of the other simulations, with a 46 % improvement in correlation ($r = 0.92$) and a halving of RMSE (RMSE = 0.44 m) compared to the second-best result in Experiment II. The largest errors shown by the error and CRPS maps seem to be concentrated in very specific locations, exhibiting a mostly homogeneous spatial distribution over the whole area. Experiment III shows that using snow depth observations from early in the snow season to construct a semi-empirical prior covariance matrix to map the similarity between cells can result in spatially complex posterior simulations that closely align with the peak snow depth spatial patterns found in the independent validation data. This is reflected in all evaluation metrics, which are markedly improved using this approach compared not only to the OL but also to the alternative spatio-temporal DA strategies tested in Experiments I and II. Table 1 provides a detailed description of the spatial validation metrics for maps

**Figure 7.** Comparison of snow depth semivariograms on 11 March 2020 near peak accumulation.

other than the peak SWE occurrence date. All experiments show decreasing r values over time. This is due to the very shallow snowpacks found at the end of the season such that small absolute differences in the snow depth are exaggerated. The patchy conditions at the end of the season also contribute to this decrease in performance. In any case, all experiments were able to greatly improve the statistics during the melt season compared to the OL, where melting occurred much earlier, particularly Experiment III which maintained $r > 0.5$ until early June. After that date, only reminiscent accumulations were left.

Figure 6 shows the spatial variability in snow depth at different spatial scales estimated for the three experiments, the OL, and the observations close to peak SWE (11 March 2020). As mentioned before, the OL simulation exhibits very limited spatial variability compared with the observations,

and this is reflected in the semivariogram which is nearly flat and thus shows minimal dependence on separation distance. On the other hand, the three experiments show increasingly realistic semivariograms depending on the level of spatio-temporal DA complexity. The shape of the semivariograms nonetheless differs considerably between the three experiments. Among the three experiments, the semivariogram for Experiment I semivariogram is the furthest from the reference (observed) semivariogram according to the Fréchet distance metric ($FD = 0.71$), despite showing a noticeable improvement over the OL ($FD = 1.07$). In particular, Experiment I semivariogram is constrained to the Gaussian shape characteristic of the GC function, as this is implemented directly in the horizontal Euclidean distance, which is directly related to the x axis in Fig. 7. In geostatistical terms (c.f. Chilès and Delfiner, 2012; Wikle et al., 2019), the semivariogram for Experiment I diverges from the observations in two important respects. Firstly, it does not show the correct high small-scale variability since it lacks the so-called nugget effect (offset around 0 distance). Secondly, despite performing better than the OL, it displays lower large-scale variability than the observations in that it has a lower sill (stabilizes at a lower value) than the observed semivariogram. In Experiment II the semivariogram is able to capture the same nugget effect as in the observations, but the larger-scale variability remains too low with a sill that is similar to that in Experiment I. Overall, the semivariogram is nonetheless closer to the observations in Experiment II ($FD = 0.47$) than in Experiment I. As could be expected, the use of observations from an earlier drone-based snow depth map to define the prior covariance between cells in Experiment III also led to the most realistic scale-dependence in the simulation spatial patterns of snow depth according to the semivariogram. Here, the nugget effect, the sill as well as the overall shape of the semivariogram were more or less in complete agreement. Notably, the semivariogram of Experiment III showed the shortest Fréchet distance ($FD = 0.08$), confirming a very close match to the observed steep increase in the semivariance of snow depth as a function of separation distance near peak accumulation in 2020.

The improvements in the simulated spatial patterns that we saw near the peak snow depth date for the various experiments is also reflected in the temporal evolution of the total snow volume in the catchment. Figure 8 compares the temporal evolution of the total volume of snow in the Izas catchment as simulated continuously by the OL and the three spatio-temporal DA experiments with the snapshots retrieved from the drone surveys. Due to the increasing variability induced by the DA, some parts of the basin show large accumulations, which delays the melt-out date and makes it more consistent with the trajectory of the effectively independent observations. All the experiments improved the (temporal) RMSE metric for the posterior mean total snow volume obtaining $RMSE = 0.07$, 0.08 and 0.06 hm^3 for the posterior mean in experiments I, II and III, respectively, compared with

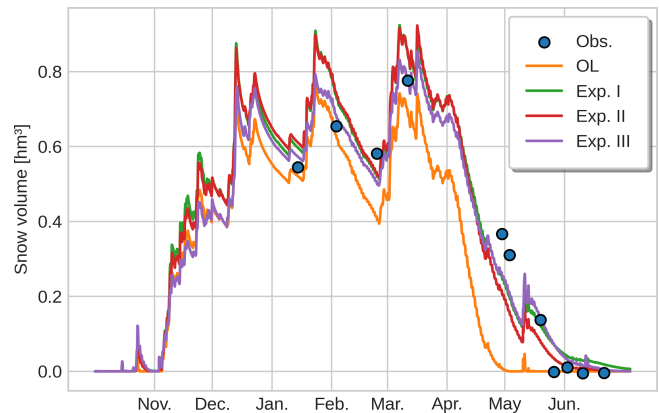


Figure 8. Time evolution of the total volume of snow in the catchment in units of cubic hectometres (10^6 m^3) from the different simulations (coloured lines) along with the volume estimates obtained from the snow depth drone maps (blue dots). Note that the snow volume can be multiplied by a scale factor of 1.82 to recover the mean snow depth for the Izas catchment with an area of 55 ha.

a considerably higher $RMSE = 0.16 \text{ hm}^3$ for the OL. This shows how spatio-temporal DA of sparse observations can lead to a better representation of both total snow accumulation and snowmelt timing at the catchment level, which could in turn improve snowmelt runoff simulations. Surprisingly, despite the improvements shown by Experiments II and III compared with Experiment I in terms of spatial representativity, the temporal RMSE values in the three experiments did not differ markedly. As such, even a relatively simple spatio-temporal DA system based on horizontal distance in Experiment I may suffice if the primary quantity of interest is the temporal evolution of the total snow volume (or possibly by extension SWE) in a catchment, rather than accurately reproducing the spatial distribution of snow depth.

4 Discussion

In this work, we investigated the capability of propagating information from sparse observations of the snowpack in hyper-resolution simulations through ensemble-based spatio-temporal DA techniques. We performed three experiments in which we assimilated sparse observations from the Izas experimental catchment. The observations were obtained through random sampling of 20 points from each of the 12 available snow depth maps during the 2020 water year. This set-up was designed to mimic the typical sparse manual sampling of a catchment to test the possibility of propagating this information in distributed snowpack simulations. It should be noted that the selection of grid points for sampling is completely random, and different from one date to another, which may result in many measurements not being as informative as they could be. Additionally, most of the snow depth maps are concentrated on the end of snow season, at which point

a significant portion of the snow has already melted (Fig. 1), leading to a partial sampling of snow-free areas. While the absence of snow on a specific date can provide valuable information in the context of snow DA (e.g. Margulis et al., 2016; Fiddes et al., 2019; Alonso-González et al., 2021), in the absence of clouds this information is already available from fractional snow-covered area (fSCA) retrieved by high-resolution optical satellite imagery (Aalstad et al., 2020). In practice it could thus be seen as somewhat of a waste to choose to sample snow-free areas with manual measurements when we could instead assimilate fSCA from satellites. The joint assimilation of fSCA and sparse snow depth observations is a certainly promising path forward, which will be explored in future work. In real-world scenarios, it would also be beneficial to implement more sophisticated sampling strategies to maximize the expected information gain (Molotch and Bales, 2005; López-Moreno et al., 2011a), but for the sake of simplicity the current completely random approach is deemed adequate for our intended objectives.

The three experiments that we carried out herein reflect different strengths and weaknesses of spatio-temporal DA techniques when applied to the hyper-resolution scales for snowpack simulation. These three experiments were designed as a sample of the potential of the techniques, rather than to find the optimal set-up which would likely be highly problem-dependent and involve considerable hyperparameter tuning. The configuration used in Experiment I was not able to reproduce the complex spatial patterns present in the drone-based snow depth map near the snow accumulation maximum, although the simulated evolution of the total snow volume was similar to that of the other two DA experiments and equally close to the observations. Despite this weakness, the simplicity of the configuration of Experiment I is a key advantage over the more sophisticated prior covariance modelling experiments. Constructing the prior covariance based solely on the (horizontal) geographic distance between cells allows for a much more intuitive configuration of the correlation length scale c in the GC function Eq. (1). Tuning such hyperparameters by trial and error can be prohibitively computationally expensive depending on the size of the experiment being carried out (Anderson, 2012). Furthermore, the use of distances defined in geographic space can be particularly valuable in the more ideal case of a very high spatial density of observations, where a fine control of spatial information propagation may be desired. Another clear use case of regular geographic-distance-based prior covariance modelling and localization can be in the case of lower spatial resolution simulations (≥ 1 km), which may be required for larger-scale snow DA applications (e.g. Magnusson et al., 2014; Odry et al., 2022), as is typical in land (Reichle and Koster, 2003; De Lannoy et al., 2010, 2012) and atmospheric DA (Anderson, 2012; Houtekamer and Zhang, 2016).

The incorporation of other dimensions than the geographical easting and northing in the distance-based prior covariance and localization markedly improves the results of Ex-

periments II and III both compared with the OL and Experiment I. Experiment II has demonstrated (see Fig. 5) that by simply utilizing parameters derived from topography, it is possible to enhance the hyper-resolution simulations such that they can partly reproduce the complex spatial patterns of the snowpack. This is supported by the reasonable assumption that the snowpack often exhibits persistent spatial patterns between seasons (Schirmer et al., 2011) due to the topographic controls on snowpack redistribution (Revuelto et al., 2014). Other promising experimental configurations could include additional topography-based parameters, such as avalanche deposition zones (López-Moreno et al., 2017) or sky view factor (Sicart et al., 2006) as they are both important contributors to the mass and energy balances. For simulations at a coarser resolution, we hypothesize that the use of other parameters with climatological implications could play a crucial role. These could be indicators of continentality or marine influences, as well as exposure to atmospheric moisture advection (Alonso-González et al., 2021) or teleconnection indices (López-Moreno et al., 2011b), which have been shown to play an important role in controlling large-scale snowpack dynamics. In summary, the approach in Experiment II paves the way towards integrating additional information, such as that derived from (snow-off) DEMs, which can otherwise be difficult to exploit in the context of snow DA.

The results obtained in Experiment III (see Fig. 6) were by a good measure the closest to the reference observations used for evaluation. The empirical Bayes approach (Efron and Hastie, 2016) of using observations in the construction of the prior covariance is thus a highly effective way to directly map the similarity between cells. The case shown in Experiment III is likely an example where the benefits from this technique are maximized, as distances are defined using a complete drone-based snow depth map, a snowpack state variable that is closely related to SWE. It should be noted that today, it is possible to obtain hyper-resolution snow depth maps also for larger or more remote catchments from satellite products such as from the Pléiades constellation (Marti et al., 2016) that can be scheduled in advance. Given the high inter-annual similarity of the snowpack spatial distribution (Schirmer et al., 2011), the snow depth map used for the prior covariance could be from a different year and possibly still perform nearly as well as in our Experiment III. Alternatively, other observation-based products such as satellite-based snow cover duration maps could serve as a proxy for SWE patterns and thus help with prior covariance modelling both at larger scales and at coarser resolutions. Prior covariance modelling can also provide a way to integrate other sources of information into the snow DA. An example may be the Landsat constellation where the low revisit frequency may limit its direct usage in a snow DA context (Alonso-González et al., 2022b), but the long climate data record can be used to compute long-term snow climate statistics

that could be used to map the similarity between grid cells (Macander et al., 2015).

The spatio-temporal DA techniques that we explored herein also have wider implications. An immediate possible operational application could be to integrate information obtained from the typically sparse national snow-monitoring networks into high-resolution distributed physically based snow simulations, building on the work of Magnusson et al. (2014); Cluzet et al. (2022), as an alternative to approaches based purely on statistical interpolation (Fassnacht et al., 2003; Collados-Lara et al., 2020). In a similar vein, as an extension of the work of Odry et al. (2022), the spatio-temporal snow DA approach presented here allows for the fusion of sparse manual snow surveys into high-resolution distributed snowpack simulations. In a broader sense, these techniques could be used to propagate information obtained from optical satellites that often contain spatial gaps for several reasons. For example, as an extension to the study by De Lannoy et al. (2012), it would be possible to propagate information from clear observed cells to those that lack observations due to the presence of clouds. Propagating information from forest clearings to areas where canopy obstructs snow visibility from space could also be a promising approach that should be investigated in future studies. More generally, the techniques can be employed to propagate information from areas where information is easily obtained from optical satellites to areas where obtaining information is problematic due to terrain characteristics such as steep slopes or the presence of shadows (Gascoïn et al., 2019). The use of spatio-temporal DA techniques in these contexts would make it possible to control the influence of outliers in the observations, increasing the spatial consistency of the posterior simulations. The use of DA techniques with localization (Sakov and Oke, 2008) also impedes distant observations from affecting local simulations thus avoiding spurious correlations that can degrade the quality of the analysis. The ensemble Kalman-based DA approach pursued herein could also be adopted as a proposal distribution in particle-based DA (e.g. Pirk et al., 2022), such that our approach may also be relevant to particle-based snow DA frameworks (e.g. Cluzet et al., 2021).

A particularly promising potential application is the assimilation of snow depth acquisitions from the ICESat-2 laser altimeter (Enderlin et al., 2022; Deschamps-Berger et al., 2022), which records data along linear tracks that exhibit a discontinuous pattern in space. A straightforward extension of the experiments herein could involve joint DA using (nearly) spatially continuous satellite retrievals together with sparser retrievals or ground-based measurements. This could for instance involve combining high spatial resolution fSCA products (Gascoïn et al., 2020; Aalstad et al., 2020) derived from Sentinel-2 and/or Landsat acquisitions with in situ information obtained from stations or manual surveys, or even ICESat-2 snow depth retrievals. This would exploit the information derived from complementary sources within the same simulation, as done for glacier DA by Leclercq et al. (2017).

Despite the promising results, new configuration and numerical challenges arise when a high-dimensional space is used to define the pairwise distance between cells. For example, the Mahalanobis distance in Eq. (8) is dimensionless, which impedes an intuitive interpretation of the prior correlation length scale c . This, along with the aforementioned computational cost associated with tuning the hyperparameter c by trial and error, further hinders an optimal and automated configuration of the entire assimilation workflow. A possible solution to avoid the computational cost of adjusting the c hyperparameter could be to explore the semi-variogram of the available observations and deduce its value from it (for either the Euclidean or Mahalanobis distance). However, there is another issue that may complicate the use of the Mahalanobis distance: if simple geographic Euclidean distance is not used, it is not guaranteed that the resulting correlation matrix will be numerically positive definite (Curriero, 2006). The Cholesky decomposition used in Eq. (3) is only possible if the prior covariance matrix is positive definite, which can thus make some configurations of dimensions in combination with some values of c not possible. Fortunately, this is not a new problem within the geostatistics (Chilès and Delfiner, 2012), spatio-temporal statistics (Cressie and Wikle, 2011; Wikle et al., 2019) or machine learning (Rasmussen and Williams, 2005; Murphy, 2022, 2023) communities. Different procedures have been proposed to address this issue, including the use of dimension reductions through multi-dimensional scaling (Murphy, 2022). Other approaches such as finding the closest positive definite matrix have been proposed (Davis and Curriero, 2019). The use of specific prior correlation models other than the GC and different approaches to robustly ensure the positive definiteness of the covariance matrix will be explored in future work.

5 Conclusions

In this study, we explored the potential of spatio-temporal DA methods for updating hyper-resolution simulations of the snowpack in an experimental catchment situated in the Pyrenees. Three different experiments were proposed and executed, each employing a distinct prior covariance modelling strategy for assimilating sparse snowpack observations that were subsampled from drone-based snow depth maps. The assimilated data consist of 20 randomly selected snow depth measurements obtained from the $N_g = 18\,442$ possible grid cells (excluding some minor gaps) that were mapped for each of the 12 drone flights. This sampling strategy aims to emulate several manual snow surveys performed intermittently during a water year.

The three proposed experiments are essentially built on the same underlying DA scheme (Algorithm 1), the only difference being in the distance calculation used for the prior covariance matrix and localization. Experiment I utilized

the conventional horizontal Euclidean distance between cells following the usual set-up of 3D land DA. The results of this first experiment demonstrated an inability to accurately simulate the complex spatial snow depth patterns found in the drone-based observations. Subsequently, Experiments II and III significantly enhanced the performance of the DA system compared to Experiment I, by incorporating additional dimensions in the form of topographic parameters and a snow depth map, respectively, in the distances used to construct the prior covariance. Experiment III performed best by most accurately reproducing the snow depth spatial distribution. At the catchment scale, all three experimental set-ups led to nearly equally and relatively accurate simulations of the temporal evolution of total snow volume, with a considerable improvement over the deterministic OL (without DA) both in terms of peak accumulation and snowmelt timing.

It should be noted that setting up the better performing Experiments (II and III) can entail considerable technical difficulties. In particular, the use of generalized (rather than simpler geographic) multi-dimensional distances to construct the prior covariance matrix and perform localization leads to a less intuitive experimental design. Notably, the performance of these experiments is sensitive to the choice of hyperparameters, especially the correlation length scale c . These parameters can be difficult to get a sense for when working with generalized distances. Moreover, the computational cost of performing hyperparameter optimization can be prohibitive and some choices for the hyperparameters can even result in non-trivial numerical issues related to matrix positive definiteness. Further research is necessary to develop and refine the covariance functions utilized in DA to ensure compatibility with hyper-resolution scenarios that require non-conventional distance metrics to exploit and propagate information from observations. Despite the new challenges encountered, the results are promising and pave the way for improving hyper-resolution snow simulations through ensemble-based assimilation of spatially sparse data. The methods presented here have many new applications, which will enable the combination of spatially incomplete but potentially very informative data such as those obtained from automatic ground-based monitoring networks or orbital LiDAR, with continuous satellite products such as fSCA or LST (land surface temperature) within the same hyper-resolution distributed simulations.

Appendix A: Local information propagation using prior dependence

Herein, we outline the role that prior dependence plays in propagating information from local observations. In Sect. A1 we show formally how prior dependence is the only way to propagate information from observed to unobserved locations in the general Bayesian DA setting. In Sect. A2 we go through an illustrative toy example in the form of a simple

Gaussian model that demonstrates how observed information can be propagated from an observed to an unobserved location using prior dependence. Distance-based prior dependence modelling is at the core of Gaussian process regression (Rasmussen and Williams, 2005), of which Kalman methods can be seen as a special case. Thereby, the simple Gaussian linear model is an elementary demonstration of the inferential mechanism that powers these Gaussian spatio-temporal techniques (Cressie and Wikle, 2011; Wikle et al., 2019). Many applied spatio-temporal problems involving Gaussian processes, including the one in this study, are of course non-linear. The simple Gaussian linear model can nonetheless be helpful to gain a high-level intuition of how the inference works.

A1 General Bayesian formulation

DA can be formalized as an exercise in Bayesian inference (Wikle and Berliner, 2007; Evensen et al., 2022) that involves updating prior beliefs $p(\mathbf{x})$ about model states (and/or parameters) using information from observations encoded in the likelihood $p(\mathbf{y}|\mathbf{x})$ to obtain the posterior

$$p(\mathbf{x}|\mathbf{y}) = p(\mathbf{y}|\mathbf{x})p(\mathbf{x})/Z, \quad (\text{A1})$$

where the model evidence $Z = p(\mathbf{y})$ is a normalizing constant (MacKay, 2003). Now split the state space in two regions $\mathbf{x} = [\mathbf{x}_1, \mathbf{x}_2]$ where the first (\mathbf{x}_1) is directly observed via local observations \mathbf{y}_1 while the second (\mathbf{x}_2) is unobserved. In general, these two regions could have different spatio-temporal extents. The likelihood becomes $p(\mathbf{y}|\mathbf{x}) = p(\mathbf{y}_1|\mathbf{x}_1)$ and thus the joint posterior Eq. (A1) is

$$p(\mathbf{x}_1, \mathbf{x}_2|\mathbf{y}_1) = p(\mathbf{y}_1|\mathbf{x}_1)p(\mathbf{x}_1)p(\mathbf{x}_2|\mathbf{x}_1)/Z, \quad (\text{A2})$$

where we have factorized the joint prior $p(\mathbf{x}) = p(\mathbf{x}_1, \mathbf{x}_2) = p(\mathbf{x}_2|\mathbf{x}_1)p(\mathbf{x}_1)$. Since the marginal posterior for \mathbf{x}_1 is

$$p(\mathbf{x}_1|\mathbf{y}_1) = p(\mathbf{y}_1|\mathbf{x}_1)p(\mathbf{x}_1)/Z, \quad (\text{A3})$$

then Eq. (A2) can be written more compactly as $p(\mathbf{x}_1, \mathbf{x}_2|\mathbf{y}_1) = p(\mathbf{x}_1|\mathbf{y}_1)p(\mathbf{x}_2|\mathbf{x}_1)$, such that the marginal posterior for \mathbf{x}_2 is

$$\begin{aligned} p(\mathbf{x}_2|\mathbf{y}_1) &= \int p(\mathbf{x}_1, \mathbf{x}_2|\mathbf{y}_1) d\mathbf{x}_1 \\ &= \int p(\mathbf{x}_1|\mathbf{y}_1)p(\mathbf{x}_2|\mathbf{x}_1) d\mathbf{x}_1, \end{aligned} \quad (\text{A4})$$

demonstrating that local information from \mathbf{y}_1 is transferred to \mathbf{x}_2 through the prior dependence encoded in $p(\mathbf{x}_2|\mathbf{x}_1)$. Only in the *special case* of prior independence, i.e. $p(\mathbf{x}_2|\mathbf{x}_1) = p(\mathbf{x}_2)$, do we have

$$p(\mathbf{x}_2|\mathbf{y}_1) = p(\mathbf{x}_2) \int p(\mathbf{x}_1|\mathbf{y}_1) d\mathbf{x}_1 = p(\mathbf{x}_2), \quad (\text{A5})$$

whereby observing \mathbf{y}_1 does not provide any information about \mathbf{x}_2 , highlighting the vital role that prior dependence

plays in propagating information from local observations in general Bayesian DA. This will apply to any scheme that attempts to implement such a propagation in practice, whether it be an ensemble Kalman, particle, MCMC, variational or hybrid method.

A2 Simple Gaussian linear example

To make the above general derivation more concrete, we consider a specific toy example in the form of a simple model where a scalar variable of interest x_i , such as snow depth or air temperature, at location $i = 1$ is directly observed with some observation error while the same variable is unobserved at a second location $i = 2$. The task now is to infer the value of x_2 using noisy observations of x_1 . Using the following forward (data generating) model for the noisy observation $y_1 = x_1^* + \varepsilon$ where x_1^* is the (unknown) true value at the observed location and $\varepsilon \sim \mathcal{N}(0, \sigma_y^2)$ is a zero-mean additive Gaussian observation error with observation error variance σ_y^2 leads to a Gaussian likelihood $p(y_1|x_1) = \mathcal{N}(y_1|x_1, \sigma_y^2)$ of the form

$$p(y_1|x_1) \propto \exp\left(-\frac{1}{2}\sigma_y^{-2}(y_1 - x_1)^2\right), \tag{A6}$$

which, given this particular forward model, does not depend on x_2 . We also adopt a bivariate Gaussian joint prior distribution to encode our uncertainty about the values of x_1 and x_2 of the form

$$p(x_1, x_2) \propto \exp\left(-\frac{1}{2}[\mathbf{x} - \boldsymbol{\mu}]^T \mathbf{C}^{-1} [\mathbf{x} - \boldsymbol{\mu}]\right), \tag{A7}$$

where $\mathbf{x} - \boldsymbol{\mu} = \begin{bmatrix} x_1 - \mu_1 \\ x_2 - \mu_2 \end{bmatrix} = \begin{bmatrix} x'_1 \\ x'_2 \end{bmatrix}$ are the anomalies from the prior means (μ_1, μ_2) and $\mathbf{C} = \begin{bmatrix} \sigma_x^2 & \rho\sigma_x^2 \\ \rho\sigma_x^2 & \sigma_x^2 \end{bmatrix}$ is the prior covariance matrix with variance σ_x^2 and correlation ρ whose inverse is the prior precision matrix $\mathbf{C}^{-1} = \text{adj}(\mathbf{C})/\det(\mathbf{C}) = \begin{bmatrix} \phi & -\rho\phi \\ -\rho\phi & \phi \end{bmatrix}$ where $\phi = [(1 - \rho^2)\sigma_x^2]^{-1}$. Expanding the exponent in the prior Eq. (A7) and multiplying the prior with the likelihood Eq. (A6), the posterior becomes

$$p(x_1, x_2|y_1) \propto p(y_1|x_1)p(x_1, x_2) \propto \exp\left(-0.5\sigma_y^{-2}(y_1 - x_1)^2 - 0.5\phi[\phi x_1^2 + \phi x_2^2] + \rho\phi x_1' x_2'\right). \tag{A8}$$

Since the model is linear with a Gaussian prior and Gaussian observation error, the posterior is also Gaussian. Thereby, the mean will coincide with the mode which happens to be the unique point at which the gradient of a Gaussian vanishes. One simple way to obtain the posterior mean $\mathbf{m} = [m_1, m_2]^T$ analytically is thus to compute the gradient of the posterior $\frac{\partial p}{\partial \mathbf{x}}$ and identify the mean as the point at

which it is zero. Taking this route, the posterior mean at the unobserved location is

$$m_2 = \mu_2 + \rho(m_1 - \mu_1), \tag{A9}$$

and the posterior mean at the observed location is

$$m_1 = \mu_1 + K(y_1 - \mu_1), \tag{A10}$$

where $K = \sigma_x^2(\sigma_x^2 + \sigma_y^2)^{-1}$ is a Kalman gain $K \in (0, 1)$ which is determined by the ratio of the prior variance σ_x^2 to the observation error variance σ_y^2 . Using second derivatives to compute the Hessian (MacKay, 2003), we also obtain the posterior precision matrix $\mathbf{P}^{-1} = \begin{bmatrix} \sigma_y^{-2} + \phi & -\rho\phi \\ -\rho\phi & \phi \end{bmatrix}$ whose inverse is the posterior covariance matrix

$$\mathbf{P} = \begin{bmatrix} K\sigma_y^2 & K\rho\sigma_y^2 \\ K\rho\sigma_y^2 & K[(1 - \rho^2)\sigma_x^2 + \sigma_y^2], \end{bmatrix} \tag{A11}$$

whereby the exact joint posterior is given by the bivariate Gaussian $p(\mathbf{x}|y_1) = \mathcal{N}(\mathbf{x}|\mathbf{m}, \mathbf{P})$ with marginal distributions $p(x_1|y_1) = \mathcal{N}(x_1|m_1, K\sigma_y^2)$ and $p(x_2|y_1) = \mathcal{N}(x_2|m_2, K[(1 - \rho^2)\sigma_x^2 + \sigma_y^2])$ where the marginal variances are given by the corresponding diagonal terms in \mathbf{P} . Similar derivations for more general Gaussian linear systems can be found in Murphy (2023).

The point of deriving the exact posterior for this simple toy bivariate model is to demonstrate the importance of prior dependence, which in the case of the Gaussian prior is controlled through the prior correlation ρ , in propagating information. First consider the special case of prior independence which occurs when $\rho = 0$. In this case, the posterior mean at the unobserved location m_2 in Eq. (A9) reverts to the prior mean μ_2 . Moreover, the posterior variance at the unobserved location given by the final diagonal term in Eq. (A11) becomes $K[\sigma_x^2 + \sigma_y^2] = \sigma_x^2$, which is simply the prior variance. As such, the observations at the observed location have no effect on the posterior inference at the unobserved location. At the observed location, however, the observation has an effect on the inference with the posterior mean m_1 in Eq. (A10) pulling from the prior mean μ_1 towards y_1 in accordance with the Kalman gain. Similarly, the posterior variance at the observed location given by the initial diagonal term in Eq. (A11) is $K\sigma_y^2$, which will always be less than the prior variance σ_x^2 . As such, unsurprisingly, the observations constrain the posterior at the observed location. This case is shown in Fig. A1 where we see that the marginal posterior at the observed location is both narrower and closer to the observations than the prior, whereas at the unobserved location the marginal prior and posterior are identical.

For the more general case of prior dependence obtained when $\rho \neq 0$ we see information propagate from the observed to the unobserved location. As shown in Eq. (A9) the update (i.e. $m_2 - \mu_2$) in the posterior mean at the unobserved

location is proportional to the update in the posterior mean at the observed location with a constant of proportionality equal to the prior correlation ρ . Moreover, the posterior variance at the unobserved location $K[(1 - \rho^2)\sigma_x^2 + \sigma_y^2]$ will always be less than the prior variance σ_x^2 (since $\rho^2 > 0$). Thus, it is clear that with prior correlation the marginal posterior in the unobserved location will be both shifted and constrained (narrowed). This exemplifies how prior specification is a vital part of the modelling process, and although there is no true or false prior, there are better and worse priors in terms of how well the subsequent inference will perform. In particular, the sign of the prior correlation will determine the direction in which the posterior mean is shifted in the unobserved location. Thus, if we prescribe anticorrelation ($\rho < 0$) in the prior when the actual (but usually unknown in practice) errors are correlated ($\rho > 0$) or vice versa then the inference would not perform well for the unobserved location. Here, Tobler's first law of geography, that the behaviour of nearby elements in a system will be more alike than those that are further apart (Wikle et al., 2019), is a helpful guiding principle for spatio-temporal modelling suggesting that we should often set $\rho > 0$ if locations $i = 1$ and $i = 2$ are close in some sense. On the other hand, in some cases when the locations are further apart or x_1 and x_2 are *different* variables (e.g. one is snow depth, the other is air temperature) prescribing a prior anticorrelation $\rho < 0$ is more appropriate. In Fig. A2 we show an ideal case where a strong positive prior correlation of $\rho = 0.9$ is in line with the underlying error structure, such that the posterior inference also performs well at the unobserved location. In line with the likelihood principle (MacKay, 2003), the prior correlation plays no role in the inference at the observed location, as can be seen in Eqs. (A9) and (A11), since there is nothing to learn from the unobserved location. This is reflected in Figs. A1b and A2b where the marginal posterior at the observed location is identical for $\rho = 0$ and $\rho = 0.9$.

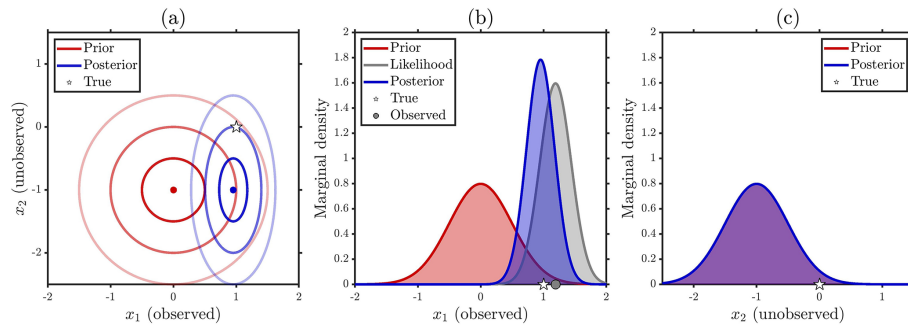


Figure A1. Simple Gaussian linear example with an uncorrelated prior $\rho = 0$, prior means $\mu_1 = 0$ and $\mu_2 = -1$, equal prior variances $\sigma_x^2 = 0.25$, observation error variance $\sigma_y^2 = 0.0625$, and observation $y_1 = 1.1911$. **(a)** Joint prior (red) and posterior (blue) means (dots) and 68 % (1σ), 95 % (2σ), and 99.7 % (3σ) highest-density credible intervals (innermost to outermost ellipses), and true value (star). **(b)** Marginal prior (red curve), marginal posterior (blue), (scaled) likelihood (grey), true value (star), and observation (grey dot) for the observed location. **(c)** Same as **(b)** but for the unobserved location.

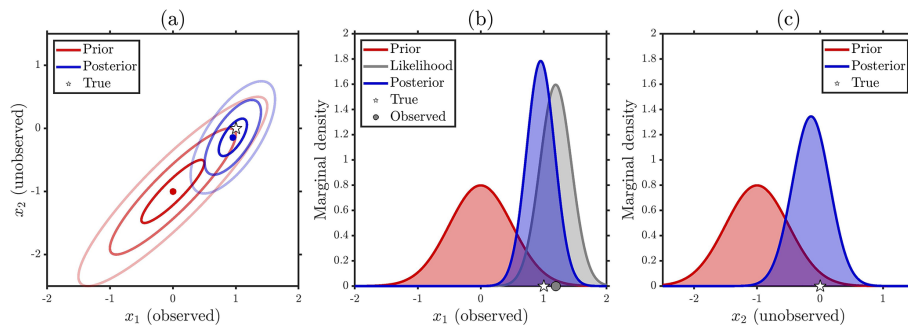


Figure A2. As in Fig. A1 but with a correlated prior $\rho = 0.9$.

Code and data availability. The MuSA code can be found at <https://github.com/ealonsogzl/MuSA> (last access: 8 May 2023; <https://doi.org/10.5281/zenodo.7906965>, Alonso-González, 2023). The complete drone surveys and meteorological forcing can be downloaded from <https://doi.org/10.5281/zenodo.7248635> (Alonso-González, 2022).

Author contributions. Conceptualization was by EAG and KA. Data were curated by EAG. Formal analysis was undertaken by EAG and KA. Funding was acquired by EAG and KA. Investigation was undertaken by EAG and KA. Methodology was developed by EAG, KA, MM and PL. Project administration was the responsibility of EAG and KA. Resources were the responsibility of NP, DT and SW. Software was the responsibility of EAG with key contributions by KA. Supervision was carried out by NP, DT, SW, JILM and SG. Validation was performed by EAG. Visualization was developed by EAG and KA. Writing – original draft preparation was lead by EAG and KA, with contributions from all co-authors. Writing – review and editing was result of the common effort of all co-authors.

Competing interests. The contact author has declared that none of the authors has any competing interests.

Disclaimer. Publisher’s note: Copernicus Publications remains neutral with regard to jurisdictional claims made in the text, published maps, institutional affiliations, or any other geographical representation in this paper. While Copernicus Publications makes every effort to include appropriate place names, the final responsibility lies with the authors.

Acknowledgements. This joint research effort was initiated through the JASPER project (no. 337515) funded by the Research Council of Norway. Esteban Alonso-González has been funded by the CNES postdoctoral fellowship. Kristoffer Aalstad and Norbert Pirk were funded by the Research Council of Norway through the Spot-On project (no. 301552) and acknowledge support from the LATICE Strategic Research Initiative at the University of Oslo. Marco Mazzolini and Désirée Treichler acknowledge funding from the Research Council of Norway (SNOWDEPTH project, contract 325519). This study was partially funded by the project SNOWDUST (TED2021-130114B-I00) and MARGIS-

NOW (PID2021-124220OB-100), both funded by the Spanish Ministry of Science and Innovation.

Financial support. This research has been supported by the Norges Forskningsråd (grant nos. JASPER 337515, SNOWDEPTH 325519, and Spot-On 301552), the Centre National d'Etudes Spatiales (grant no. Postdoctoral fellowship 0103207), and the Ministerio de Ciencia e Innovación (grant nos. MARGISNOW PID2021-124220OB-100 and SNOWDUST TED2021-130114B-I00).

Review statement. This paper was edited by Jan Seibert and reviewed by two anonymous referees.

References

- Aalstad, K., Westermann, S., Schuler, T. V., Boike, J., and Bertino, L.: Ensemble-based assimilation of fractional snow-covered area satellite retrievals to estimate the snow distribution at Arctic sites, *The Cryosphere*, 12, 247–270, <https://doi.org/10.5194/tc-12-247-2018>, 2018.
- Aalstad, K., Westermann, S., and Bertino, L.: Evaluating satellite retrieved fractional snow-covered area at a high-Arctic site using terrestrial photography, *Remote Sens. Environ.*, 239, 111618, <https://doi.org/10.1016/j.rse.2019.111618>, 2020.
- Alonso-González, E.: Inputs (forcing and observations) ready for use by 'MuSA: The Multiscale Snow Data Assimilation System (v1.0)', Zenodo [data set], <https://doi.org/10.5281/zenodo.7248635>, 2022.
- Alonso-González, E.: MuSA v2.0, Zenodo [code], <https://doi.org/10.5281/zenodo.7906965>, 2023.
- Alonso-González, E., Gutmann, E., Aalstad, K., Fayad, A., Bouchet, M., and Gascoïn, S.: Snowpack dynamics in the Lebanese mountains from quasi-dynamically downscaled ERA5 reanalysis updated by assimilating remotely sensed fractional snow-covered area, *Hydrol. Earth Syst. Sci.*, 25, 4455–4471, <https://doi.org/10.5194/hess-25-4455-2021>, 2021.
- Alonso-González, E., Aalstad, K., Baba, M. W., Revuelto, J., López-Moreno, J. I., Fiddes, J., Essery, R., and Gascoïn, S.: The Multiple Snow Data Assimilation System (MuSA v1.0), *Geosci. Model Dev.*, 15, 9127–9155, <https://doi.org/10.5194/gmd-15-9127-2022>, 2022a.
- Alonso-González, E., Gascoïn, S., Arioli, S., and Picard, G.: Improving numerical snowpack simulations by assimilating land surface temperature, EGU sphere [preprint], <https://doi.org/10.5194/egusphere-2022-1345>, 2022b.
- Anderson, J. L.: Localization and Sampling Error Correction in Ensemble Kalman Filter Data Assimilation, *Mon. Weather Rev.*, 140, 2359–2371, <https://doi.org/10.1175/MWR-D-11-00013.1>, 2012.
- Baba, M., Gascoïn, S., Kinnard, C., Marchane, A., and Hanich, L.: Effect of digital elevation model resolution on the simulation of the snow cover evolution in the High Atlas, *Water Resour. Res.*, 55, 5360–5378, <https://doi.org/10.1029/2018WR023789>, 2019.
- Banner, K., Irvine, K., and Rodhouse, T.: The use of Bayesian priors in Ecology: The good, the bad and the not great, *Methods Ecol. Evol.*, 11, 882–889, <https://doi.org/10.1111/2041-210X.13407>, 2020.
- Bannister, R.: A review of operational methods of variational and ensemble-variational data assimilation, *Q. J. Roy. Meteor. Soc.*, 143, 607–633, <https://doi.org/10.1002/qj.2982>, 2017.
- Bertino, L., Evensen, G., and Wackernagel, H.: Sequential Data Assimilation Techniques in Oceanography, *Int. Stat. Rev.*, 71, 223–241, <https://doi.org/10.1111/j.1751-5823.2003.tb00194.x>, 2003.
- Blosc Development Team: A fast, compressed and persistent data store library, <https://blosc.org> (last access: 18 December 2023), 2023.
- Bocquet, M., Gurumoorthy, K., Apte, A., Carrassi, A., Grudzien, C., and Jones, C.: Degenerate Kalman Filter Error Covariances and Their Convergence onto the Unstable Subspace, *SIAM/ASA Journal on Uncertainty Quantification*, 5, 304–333, <https://doi.org/10.1137/16M1068712>, 2017.
- Burgers, G., van Leeuwen, P., and Evensen, G.: Analysis Scheme in the Ensemble Kalman Filter, *Mon. Weather Rev.*, 126, 1719–1724, [https://doi.org/10.1175/1520-0493\(1998\)126<1719:ASITEK>2.0.CO;2](https://doi.org/10.1175/1520-0493(1998)126<1719:ASITEK>2.0.CO;2), 1998.
- Cantet, P., Boucher, M. A., Lachance-Coutier, S., Turcotte, R., and Fortin, V.: Using a Particle Filter to Estimate the Spatial Distribution of the Snowpack Water Equivalent, *J. Hydrometeorol.*, 20, 577–594, <https://doi.org/10.1175/JHM-D-18-0140.1>, 2019.
- Carrassi, A., Bocquet, M., Bertino, L., and Evensen, G.: Data assimilation in the geosciences: An overview of methods, issues, and perspectives, *WIREs Clim. Change*, 9, e535, <https://doi.org/10.1002/wcc.535>, 2018.
- Chen, Y. and Oliver, D.: Localization and regularization for iterative ensemble smoothers, *Comput. Geosci.*, 21, 13–30, <https://doi.org/10.1007/s10596-016-9599-7>, 2017.
- Chilès, J. and Delfiner, P.: *Geostatistics: Modeling Spatial Uncertainty*, 2nd edn., Wiley, <https://doi.org/10.1002/9781118136188>, 2012.
- Chopin, N. and Papaspiliopoulos, O.: *An Introduction to Sequential Monte Carlo*, Springer, <https://doi.org/10.1007/978-3-030-47845-2>, 2020.
- Clark, M., Gangopadhyay, S., Hay, L., Rajagopalan, B., and Wilby, R.: The Schaake Shuffle: A Method for Reconstructing Space–Time Variability in Forecasted Precipitation and Temperature Fields, *J. Hydrometeorol.*, 5, 243–262, [https://doi.org/10.1175/1525-7541\(2004\)005<0243:TSSAMF>2.0.CO;2](https://doi.org/10.1175/1525-7541(2004)005<0243:TSSAMF>2.0.CO;2), 2004.
- Cluzet, B., Lafaysse, M., Cosme, E., Albergel, C., Meunier, L.-F., and Dumont, M.: CrocO_v1.0: a particle filter to assimilate snowpack observations in a spatialised framework, *Geosci. Model Dev.*, 14, 1595–1614, <https://doi.org/10.5194/gmd-14-1595-2021>, 2021.
- Cluzet, B., Lafaysse, M., Deschamps-Berger, C., Vernay, M., and Dumont, M.: Propagating information from snow observations with CrocO ensemble data assimilation system: a 10-years case study over a snow depth observation network, *The Cryosphere*, 16, 1281–1298, <https://doi.org/10.5194/tc-16-1281-2022>, 2022.
- Collados-Lara, A.-J., Pulido-Velazquez, D., Pardo-Igúzquiza, E., and Alonso-González, E.: Estimation of the spatiotemporal dynamic of snow water equivalent at mountain range scale under data scarcity, *Sci. Total Environ.*, 741, 140485, <https://doi.org/10.1016/j.scitotenv.2020.140485>, 2020.

- Comola, F., Giometto, M. G., Salesky, S. T., Parlange, M. B., and Lehning, M.: Preferential Deposition of Snow and Dust Over Hills: Governing Processes and Relevant Scales, *J. Geophys. Res.-Atmos.*, 124, 7951–7974, <https://doi.org/10.1029/2018JD029614>, 2019.
- Cressie, N. and Wikle, C.: *Statistics for Spatio-Temporal Data*, Wiley, ISBN 978-1-119-24306-9, 2011.
- Curriero, F. C.: On the Use of Non-Euclidean Distance Measures in Geostatistics, *Math. Geol.*, 38, 907–926, <https://doi.org/10.1007/s11004-006-9055-7>, 2006.
- Davis, B. J. K. and Curriero, F. C.: Development and Evaluation of Geostatistical Methods for Non-Euclidean-Based Spatial Covariance Matrices, *Math. Geosci.*, 51, 767–791, <https://doi.org/10.1007/s11004-019-09791-y>, 2019.
- De Lannoy, G. J. M., Reichle, R. H., Houser, P. R., Arsenault, K. R., Verhoest, N. E. C., and Pauwels, V. R. N.: Satellite-Scale Snow Water Equivalent Assimilation into a High-Resolution Land Surface Model, *J. Hydrometeorol.*, 11, 352–369, <https://doi.org/10.1175/2009JHM1192.1>, 2010.
- De Lannoy, G. J. M., Reichle, R. H., Arsenault, K. R., Houser, P. R., Kumar, S., Verhoest, N. E. C., and Pauwels, V. R. N.: Multiscale assimilation of Advanced Microwave Scanning Radiometer–EOS snow water equivalent and Moderate Resolution Imaging Spectroradiometer snow cover fraction observations in northern Colorado, *Water Resour. Res.*, 48, W01522, <https://doi.org/10.1029/2011WR010588>, 2012.
- De Lannoy, G. J. M., Bechtold, M., Albergel, C., Brocca, L., Calvet, J.-C., Carrassi, A., Crow, W. T., de Rosnay, P., Durand, M., Forman, B., Geppert, G., Girotto, M., Hendricks Franssen, H.-J., Jonas, T., Kumar, S., Lievens, H., Lu, Y., Massari, C., Pauwels, V. R. N., Reichle, R. H., and Steele-Dunne, S.: Perspective on satellite-based land data assimilation to estimate water cycle components in an era of advanced data availability and model sophistication, *Frontiers in Water*, 4, 981745, <https://doi.org/10.3389/frwa.2022.981745>, 2022.
- de Rosnay, P., Balsamo, G., Albergel, C., Muñoz-Sabater, J., and Isaksen, L.: Initialisation of Land Surface Variables for Numerical Weather Prediction, *Surv. Geophys.*, 35, 607–621, <https://doi.org/10.1007/s10712-012-9207-x>, 2014.
- Déry, S. J. and Brown, R. D.: Recent Northern Hemisphere snow cover extent trends and implications for the snow-albedo feedback, *Geophys. Res. Lett.*, 34, L22504, <https://doi.org/10.1029/2007GL031474>, 2007.
- Deschamps-Berger, C., Gascoin, S., Shean, D., Besso, H., Guiot, A., and López-Moreno, J. I.: Evaluation of snow depth retrievals from ICESat-2 using airborne laser-scanning data, *The Cryosphere*, 17, 2779–2792, <https://doi.org/10.5194/tc-17-2779-2023>, 2023.
- DeWalle, D. R. and Rango, A.: *Principles of Snow Hydrology*, Cambridge University Press, <https://doi.org/10.1017/CBO9780511535673>, 2008.
- Dozier, J., Painter, T. H., Rittger, K., and Frew, J. E.: Time-space continuity of daily maps of fractional snow cover and albedo from MODIS, *Adv. Water Resour.*, 31, 1515–1526, <https://doi.org/10.1016/j.advwatres.2008.08.011>, 2008.
- Dozier, J., Bair, E. H., and Davis, R. E.: Estimating the spatial distribution of snow water equivalent in the world's mountains, *WIRES Water*, 3, 461–474, <https://doi.org/10.1002/wat2.1140>, 2016.
- Efron, B. and Hastie, T.: *Computer Age Statistical Inference: Algorithms, Evidence, and Data Science*, Cambridge University Press, <https://doi.org/10.1017/CBO9781316576533>, 2016.
- Elder, K., Dozier, J., and Michaelsen, J.: Snow accumulation and distribution in an Alpine Watershed, *Water Resour. Res.*, 27, 1541–1552, <https://doi.org/10.1029/91WR00506>, 1991.
- Eliassen, A.: Provisional report on calculation of spatial covariance and autocorrelation of the pressure field, in: *Dynamic Meteorology: Data Assimilation Methods (1981)*, edited by: Bengtsson, L., Ghil, M., and Källén, E., Springer, <https://doi.org/10.1007/978-1-4612-5970-1>, 319–330, Reprinted from Videnskaps-Akademiets Institutt for Vær-Og Klimaforskning, Oslo, Norway, 1954.
- Emerick, A.: Deterministic ensemble smoother with multiple data assimilation as an alternative for history-matching seismic data, *Comput. Geosci.*, 22, 1175–1186, <https://doi.org/10.1007/s10596-018-9745-5>, 2018.
- Emerick, A. A.: Analysis of the performance of ensemble-based assimilation of production and seismic data, *J. Petrol. Sci. Eng.*, 139, 219–239, <https://doi.org/10.1016/j.petrol.2016.01.029>, 2016.
- Emerick, A. A. and Reynolds, A. C.: History matching time-lapse seismic data using the ensemble Kalman filter with multiple data assimilations, *Comput. Geosci.*, 16, 639–659, <https://doi.org/10.1007/s10596-012-9275-5>, 2012.
- Emerick, A. A. and Reynolds, A. C.: Ensemble smoother with multiple data assimilation, *Comp. Geosci.*, 55, 3–15, <https://doi.org/10.1016/j.cageo.2012.03.011>, 2013.
- Enderlin, E. M., Elkin, C. M., Gendreau, M., Marshall, H. P., O'Neil, S., McNeil, C., Florentine, C., and Sass, L.: Uncertainty of ICESat-2 ATL06- and ATL08-derived snow depths for glacierized and vegetated mountain regions, *Remote Sens. Environ.*, 283, 113307, <https://doi.org/10.1016/j.rse.2022.113307>, 2022.
- Essery, R.: A factorial snowpack model (FSM 1.0), *Geosci. Model Dev.*, 8, 3867–3876, <https://doi.org/10.5194/gmd-8-3867-2015>, 2015.
- Evensen, G.: Sequential data assimilation with a nonlinear quasi-geostrophic model using Monte Carlo methods to forecast error statistics, *J. Geophys. Res.*, 99, 10143–10162, <https://doi.org/10.1029/94JC00572>, 1994.
- Evensen, G., Vossepoel, F. C., and van Leeuwen, P. J.: *Data Assimilation Fundamentals: A Unified Formulation of the State and Parameter Estimation Problem*, Springer International Publishing, <https://doi.org/10.1007/978-3-030-96709-3>, 2022.
- Farchi, A. and Bocquet, M.: Review article: Comparison of local particle filters and new implementations, *Nonlin. Processes Geophys.*, 25, 765–807, <https://doi.org/10.5194/npg-25-765-2018>, 2018.
- Fassnacht, S. R., Dressler, K. A., and Bales, R. C.: Snow water equivalent interpolation for the Colorado River Basin from snow telemetry (SNOTEL) data, *Water Resour. Res.*, 39, 1208, <https://doi.org/10.1029/2002WR001512>, 2003.
- Fayad, A., Gascoin, S., Faour, G., López-Moreno, J. I., Drapeau, L., Page, M. L., and Escadafal, R.: Snow hydrology in Mediterranean mountain regions: A review, *J. Hydrol.*, 551, 374–396, <https://doi.org/10.1016/j.jhydrol.2017.05.063>, 2017.
- Fiddes, J., Aalstad, K., and Westermann, S.: Hyper-resolution ensemble-based snow reanalysis in mountain regions us-

- ing clustering, *Hydrol. Earth Syst. Sci.*, 23, 4717–4736, <https://doi.org/10.5194/hess-23-4717-2019>, 2019.
- Gandin, L.: *Objective Analysis of Meteorological Fields*, Gridromet. Izd., Leningrad, 1963 (in Russian).
- Gascoïn, S., Grizonnet, M., Bouchet, M., Salgues, G., and Hagolle, O.: Theia Snow collection: high-resolution operational snow cover maps from Sentinel-2 and Landsat-8 data, *Earth Syst. Sci. Data*, 11, 493–514, <https://doi.org/10.5194/essd-11-493-2019>, 2019.
- Gascoïn, S., Dumont, Z. B., Deschamps-Berger, C., Marti, F., Salgues, G., López-Moreno, J. I., Revuelto, J., Michon, T., Schattan, P., and Hagolle, O.: Estimating fractional snow cover in open terrain from Sentinel-2 using the normalized difference snow index, *Remote Sens.-Basel*, 12, 2904, <https://doi.org/10.3390/RS12182904>, 2020.
- Gaspari, G. and Cohn, S. E.: Construction of correlation functions in two and three dimensions, *Q. J. Roy. Meteor. Soc.*, 125, 723–757, <https://doi.org/10.1002/qj.49712555417>, 1999.
- Gneiting, T., Raftery, A. E., Westveld, A. H., and Goldman, T.: Probabilistic Forecasting Using Ensemble Model Output Statistics and Minimum CRPS Estimation, *Mon. Weather Rev.*, 133, 1098–1118, <https://doi.org/10.1175/MWR2904.1>, 2005.
- Hersbach, H.: Decomposition of the Continuous Ranked Probability Score for Ensemble Prediction Systems, *Weather Forecast.*, 15, 559–570, [https://doi.org/10.1175/1520-0434\(2000\)015<0559:DOTCRP>2.0.CO;2](https://doi.org/10.1175/1520-0434(2000)015<0559:DOTCRP>2.0.CO;2), 2000.
- Hersbach, H., Bell, B., Berrisford, P., Hirahara, S., Horányi, A., Muñoz-Sabater, J., Nicolas, J., Peubey, C., Radu, R., Schepers, D., Simmons, A., Soci, C., Abdalla, S., Abellan, X., Balsamo, G., Bechtold, P., Biavati, G., Bidlot, J., Bonavita, M., De Chiara, G., Dahlgren, P., Dee, D., Diamantakis, M., Dragani, R., Flemming, J., Forbes, R., Fuentes, M., Geer, A., Haimberger, L., Healy, S., Hogan, R. J., Hólm, E., Janisková, M., Keeley, S., Laloyaux, P., Lopez, P., Lupu, C., Radnoti, G., de Rosnay, P., Rozum, I., Vamborg, F., Villaume, S., and Thépaut, J. N.: The ERA5 global reanalysis, *Q. J. Roy. Meteor. Soc.*, 146, 1999–2049, <https://doi.org/10.1002/qj.3803>, 2020.
- Houtekamer, P. and Zhang, F.: Review of the Ensemble Kalman Filter for Atmospheric Data Assimilation, *Mon. Weather Rev.*, 144, 4489–4532, <https://doi.org/10.1175/MWR-D-15-0440.1>, 2016.
- Hunt, B., Kostelich, E., and Szunyogh, I.: Efficient data assimilation for spatiotemporal chaos: A local ensemble transform Kalman filter, *Physica D*, 230, 112–126, <https://doi.org/10.1016/j.physd.2006.11.008>, 2007.
- Ju, J. and Roy, D. P.: The availability of cloud-free Landsat ETM+ data over the conterminous United States and globally, *Remote Sens. Environ.*, 112, 1196–1211, <https://doi.org/10.1016/j.rse.2007.08.011>, 2008.
- Krige, D.: A statistical approach to some basic mine valuation problems on the Witwatersrand, *J. S. Afr. I. Min. Metall.*, 5, 119–139, https://doi.org/10.520/AJA0038223X_4792, 1951.
- Kumar, S., Mocko, D., Vuyovich, C., and Peters-Lidard, C.: Impact of surface albedo assimilation on snow estimation, *Remote Sens.-Basel*, 12, 645, <https://doi.org/10.3390/rs12040645>, 2020.
- Largerón, C., Dumont, M., Morin, S., Boone, A., Lafaysse, M., Metref, S., Cosme, E., Jonas, T., Winstral, A., and Margulis, S. A.: Toward Snow Cover Estimation in Mountainous Areas Using Modern Data Assimilation Methods: A Review, *Front. Earth. Sci.*, 8, 325, <https://doi.org/10.3389/feart.2020.00325>, 2020.
- Leclercq, P., Aalstad, K., Elvehøy, H., and Altena, B.: Modelling of glacier surface mass balance with assimilation of glacier mass balance and snow cover observations from remote sensing, *Geophysical Research Abstracts*, 19, EGU2017–17591, EGU General Assembly 2017 Abstract, 27 April 2017, <https://meetingorganizer.copernicus.org/EGU2017/EGU2017-17591.pdf> (last access: 21 December 2023), 2017.
- Lievens, H., Brangers, I., Marshall, H.-P., Jonas, T., Olefs, M., and De Lannoy, G.: Sentinel-1 snow depth retrieval at sub-kilometer resolution over the European Alps, *The Cryosphere*, 16, 159–177, <https://doi.org/10.5194/tc-16-159-2022>, 2022.
- Liston, G. E. and Elder, K.: A meteorological distribution system for high-resolution terrestrial modeling (MicroMet), *J. Hydrometeorol.*, 7, 217–234, <https://doi.org/10.1175/JHM486.1>, 2006.
- López-Moreno, J. I., Fassnacht, S. R., Beguería, S., and Latron, J. B. P.: Variability of snow depth at the plot scale: implications for mean depth estimation and sampling strategies, *The Cryosphere*, 5, 617–629, <https://doi.org/10.5194/tc-5-617-2011>, 2011a.
- López-Moreno, J. I., Vicente-Serrano, S. M., Morán-Tejeda, E., Lorenzo-Lacruz, J., Zabalza, J., Kenawy, A. E., and Beniston, M.: Influence of Winter North Atlantic Oscillation Index (NAO) on Climate and Snow Accumulation in the Mediterranean Mountains, in: *Hydrological, Socioeconomic and Ecological Impacts of the North Atlantic Oscillation in the Mediterranean Region*, edited by: Vicente-Serrano, S. and Trigo, R., vol. 46 of *Advances in Global Change Research*, Springer, 73–89, https://doi.org/10.1007/978-94-007-1372-7_6, 2011b.
- López-Moreno, J. I., Fassnacht, S. R., Heath, J. T., Musselman, K. N., Revuelto, J., Latron, J., Morán-Tejeda, E., and Jonas, T.: Small scale spatial variability of snow density and depth over complex alpine terrain: Implications for estimating snow water equivalent, *Adv. Water Resour.*, 55, 40–52, <https://doi.org/10.1016/j.advwatres.2012.08.010>, 2013.
- López-Moreno, J. I., Revuelto, J., Alonso-González, E., Sanmiguel-Valladolid, A., Fassnacht, S. R., Deems, J., and Morán-Tejeda, E.: Using very long-range terrestrial laser scanner to analyze the temporal consistency of the snowpack distribution in a high mountain environment, *J. Mt. Sci.*, 14, 823–842, <https://doi.org/10.1007/s11629-016-4086-0>, 2017.
- Macander, M. J., Swingley, C. S., Joly, K., and Reynolds, M. K.: Landsat-based snow persistence map for northwest Alaska, *Remote Sens. Environ.*, 163, 23–31, <https://doi.org/10.1016/j.rse.2015.02.028>, 2015.
- MacKay, D. J. C.: *Information Theory, Inference, and Learning Algorithms*, Cambridge University Press, ISBN 9780521642989, 2003.
- Magnusson, J., Gustafsson, D., Hüsler, F., and Jonas, T.: Assimilation of point SWE data into a distributed snow cover model comparing two contrasting methods, *Water Resour. Res.*, 50, 7816–7835, <https://doi.org/10.1002/2014WR015302>, 2014.
- Mankin, J. S., Viviroli, D., Singh, D., Hoekstra, A. Y., and Duffenbaugh, N. S.: The potential for snow to supply human water demand in the present and future, *Environ. Res. Lett.*, 10, 114016, <https://doi.org/10.1088/1748-9326/10/11/114016>, 2015.
- Margulis, S., Cortés, G., Giroto, M., and Durand, M.: A Landsat-Era Sierra Nevada Snow Reanalysis (1985–2015), *J. Hydrometeorol.*, 17, 1203–1221, <https://doi.org/10.1175/JHM-D-15-0177.1>, 2016.

- Marti, R., Gascoin, S., Berthier, E., de Pinel, M., Houet, T., and Laffly, D.: Mapping snow depth in open alpine terrain from stereo satellite imagery, *The Cryosphere*, 10, 1361–1380, <https://doi.org/10.5194/tc-10-1361-2016>, 2016.
- Matheron, G.: Principles of geostatistics, *Econ. Geol.*, 58, 1246–1266, <https://doi.org/10.2113/gsecongeo.58.8.1246>, 1963.
- Molotch, N. P. and Bales, R. C.: Scaling snow observations from the point to the grid element: Implications for observation network design, *Water Resour. Res.*, 41, W11421, <https://doi.org/10.1029/2005WR004229>, 2005.
- Mudryk, L., Santolaria-Otín, M., Krinner, G., Ménégos, M., Derksen, C., Brutel-Vuilmet, C., Brady, M., and Essery, R.: Historical Northern Hemisphere snow cover trends and projected changes in the CMIP6 multi-model ensemble, *The Cryosphere*, 14, 2495–2514, <https://doi.org/10.5194/tc-14-2495-2020>, 2020.
- Murphy, K.: Probabilistic Machine Learning: An Introduction, MIT Press, <http://probml.github.io/book1> (last access: 18 December 2023), 2022.
- Murphy, K.: Probabilistic Machine Learning: Advanced Topics, MIT Press, <http://probml.github.io/book2> (last access: 18 December 2023), 2023.
- Odry, J., Boucher, M.-A., Lachance-Cloutier, S., Turcotte, R., and St-Louis, P.-Y.: Large-scale snow data assimilation using a spatialized particle filter: recovering the spatial structure of the particles, *The Cryosphere*, 16, 3489–3506, <https://doi.org/10.5194/tc-16-3489-2022>, 2022.
- Pirk, N., Aalstad, K., Westermann, S., Vatne, A., van Hove, A., Tallaksen, L. M., Cassiani, M., and Katul, G.: Inferring surface energy fluxes using drone data assimilation in large eddy simulations, *Atmos. Meas. Tech.*, 15, 7293–7314, <https://doi.org/10.5194/amt-15-7293-2022>, 2022.
- Pirk, N., Aalstad, K., Yilmaz, Y. A., Vatne, A., Popp, A. L., Horvath, P., Bryn, A., Vollsnes, A. V., Westermann, S., Berntsen, T. K., Stordal, F., and Tallaksen, L. M.: Snow–vegetation–atmosphere interactions in alpine tundra, *Biogeosciences*, 20, 2031–2047, <https://doi.org/10.5194/bg-20-2031-2023>, 2023.
- Pulliaainen, J., Luojus, K., Derksen, C., Mudryk, L., Lemmetyinen, J., Salminen, M., Ikonen, J., Takala, M., Cohen, J., Smolander, T., and Norberg, J.: Patterns and trends of Northern Hemisphere snow mass from 1980 to 2018, *Nature*, 581, 294–298, <https://doi.org/10.1038/s41586-020-2258-0>, 2020.
- Raleigh, M. S., Livneh, B., Lapo, K., and Lundquist, J. D.: How does availability of meteorological forcing data impact physically based snowpack simulations?, *J. Hydrometeorol.*, 17, 99–120, <https://doi.org/10.1175/JHM-D-14-0235.1>, 2016.
- Rasmussen, C. and Williams, C.: Gaussian Processes for Machine Learning, MIT Press, <https://doi.org/10.7551/mitpress/3206.001.0001>, 2005.
- Reichle, R. and Koster, R.: Assessing the Impact of Horizontal Error Correlations in Background Fields on Soil Moisture Estimation, *J. Hydrometeorol.*, 4, 1229–1242, [https://doi.org/10.1175/1525-7541\(2003\)004<1229:ATIOHE>2.0.CO;2](https://doi.org/10.1175/1525-7541(2003)004<1229:ATIOHE>2.0.CO;2), 2003.
- Revuelto, J., López-Moreno, J. I., Azorin-Molina, C., and Vicente-Serrano, S. M.: Topographic control of snowpack distribution in a small catchment in the central Spanish Pyrenees: intra- and inter-annual persistence, *The Cryosphere*, 8, 1989–2006, <https://doi.org/10.5194/tc-8-1989-2014>, 2014.
- Revuelto, J., Azorin-Molina, C., Alonso-González, E., Sanmiguel-Valladolid, A., Navarro-Serrano, F., Rico, I., and López-Moreno, J. I.: Meteorological and snow distribution data in the Izas Experimental Catchment (Spanish Pyrenees) from 2011 to 2017, *Earth Syst. Sci. Data*, 9, 993–1005, <https://doi.org/10.5194/essd-9-993-2017>, 2017.
- Revuelto, J., Billecocq, P., Tuzet, F., Cluzet, B., Lamare, M., Larue, F., and Dumont, M.: Random forests as a tool to understand the snow depth distribution and its evolution in mountain areas, *Hydrol. Process.*, 34, 5384–5401, <https://doi.org/10.1002/hyp.13951>, 2020.
- Revuelto, J., Alonso-Gonzalez, E., Vidaller-Gayan, I., Lacroix, E., Izagirre, E., Rodríguez-López, G., and López-Moreno, J. I.: Intercomparison of UAV platforms for mapping snow depth distribution in complex alpine terrain, *Cold Reg. Sci. Technol.*, 190, 103344, <https://doi.org/10.1016/j.coldregions.2021.103344>, 2021a.
- Revuelto, J., Cluzet, B., Duran, N., Fructus, M., Lafaysse, M., Cosme, E., and Dumont, M.: Assimilation of surface reflectance in snow simulations: Impact on bulk snow variables, *J. Hydrol.*, 603, 126966, <https://doi.org/10.1016/j.jhydrol.2021.126966>, 2021b.
- Revuelto, J., López-Moreno, J. I., and Alonso-González, E.: Light and Shadow in Mapping Alpine Snowpack With Unmanned Aerial Vehicles in the Absence of Ground Control Points, *Water Resour. Res.*, 57, e2020WR028980, <https://doi.org/10.1029/2020WR028980>, 2021c.
- Sakov, P. and Bertino, L.: Relation between two common localisation methods for the EnKF, *Comput. Geosci.*, 15, 225–237, <https://doi.org/10.1007/s10596-010-9202-6>, 2011.
- Sakov, P. and Oke, P.: A deterministic formulation of the ensemble Kalman filter: an alternative to ensemble square root filters, *Tellus A*, 60, 361–371, <https://doi.org/10.1111/j.1600-0870.2007.00299.x>, 2008.
- Schirmer, M., Wirz, V., Clifton, A., and Lehning, M.: Persistence in intra-annual snow depth distribution: 1. Measurements and topographic control, *Water Resour. Res.*, 47, W09516, <https://doi.org/10.1029/2010WR009426>, 2011.
- Sharma, V., Gerber, F., and Lehning, M.: Introducing CRYOWRF v1.0: multiscale atmospheric flow simulations with advanced snow cover modelling, *Geosci. Model Dev.*, 16, 719–749, <https://doi.org/10.5194/gmd-16-719-2023>, 2023.
- Sicart, J. E., Pomeroy, J. W., Essery, R. L. H., and Bewley, D.: Incoming longwave radiation to melting snow: observations, sensitivity and estimation in Northern environments, *Hydrol. Process.*, 20, 3697–3708, <https://doi.org/10.1002/hyp.6383>, 2006.
- Slatyer, R. A., Umbers, K. D. L., and Arnold, P. A.: Ecological responses to variation in seasonal snow cover, *Conserv. Biol.*, 36, e13727, <https://doi.org/10.1111/cobi.13727>, 2022.
- Smyth, E. J., Raleigh, M. S., and Small, E. E.: Particle Filter Data Assimilation of Monthly Snow Depth Observations Improves Estimation of Snow Density and SWE, *Water Resour. Res.*, 55, 1296–1311, <https://doi.org/10.1029/2018WR023400>, 2019.
- Stordal, A. and Elsheim, A.: Iterative ensemble smoothers in the annealed importance sampling framework, *Adv. Water Resour.*, 86, 231–239, <https://doi.org/10.1016/j.advwatres.2015.09.030>, 2015.
- Sturm, M., Taras, B., Liston, G. E., Derksen, C., Jonas, T., and Lea, J.: Estimating Snow Water Equivalent Using Snow Depth Data and Climate Classes, *J. Hydrometeorol.*, 11, 1380–1394, <https://doi.org/10.1175/2010JHM1202.1>, 2010.

- Sturm, M., Goldstein, M. A., and Parr, C.: Water and life from snow: A trillion dollar science question, *Water Resour. Res.*, 53, 3534–3544, <https://doi.org/10.1002/2017WR020840>, 2017.
- Talagrand, O.: Assimilation of Observations, an Introduction, *J. Meteorol. Soc. Jpn.*, 75, 191–209, https://doi.org/10.2151/jmsj1965.75.1B_191, 1997.
- van Leeuwen, P.: A consistent interpretation of the stochastic version of the Ensemble Kalman Filter, *Q. J. Roy. Meteor. Soc.*, 146, 2185–2825, <https://doi.org/10.1002/qj.3819>, 2020.
- van Leeuwen, P. J.: Non-local Observations and Information Transfer in Data Assimilation, *Frontiers in Applied Mathematics and Statistics*, 5, 48, <https://doi.org/10.3389/fams.2019.00048>, 2019.
- Vionnet, V., Marsh, C. B., Menounos, B., Gascoin, S., Wayand, N. E., Shea, J., Mukherjee, K., and Pomeroy, J. W.: Multi-scale snowdrift-permitting modelling of mountain snowpack, *The Cryosphere*, 15, 743–769, <https://doi.org/10.5194/tc-15-743-2021>, 2021.
- Wikle, C. and Berliner, L.: A Bayesian tutorial for data assimilation, *Physica D*, 230, 1–16, <https://doi.org/10.1016/j.physd.2006.09.017>, 2007.
- Wikle, C., Zammit-Mangion, A., and Cressie, N.: *Spatio-Temporal Statistics with R*, CRC Press, <https://spacetimewithr.org/> (last access: 18 December 2023), 2019.
- Zhang, T.: Influence of the seasonal snow cover on the ground thermal regime: An overview, *Rev. Geophys.*, 43, RG4002, <https://doi.org/10.1029/2004RG000157>, 2005.