



HAL
open science

Beyond Explicit Acknowledgment: Brain Response Evidence of Human Skepticism towards Robotic Emotions

Robin Gigandet, Maria Chiara Diana, Kenza Ouadada, Tatjana A Nazir

► **To cite this version:**

Robin Gigandet, Maria Chiara Diana, Kenza Ouadada, Tatjana A Nazir. Beyond Explicit Acknowledgment: Brain Response Evidence of Human Skepticism towards Robotic Emotions. *Robotics*, 2024, 13 (5), pp.67. 10.3390/robotics13050067 . hal-04569852

HAL Id: hal-04569852

<https://hal.science/hal-04569852>

Submitted on 6 May 2024

HAL is a multi-disciplinary open access archive for the deposit and dissemination of scientific research documents, whether they are published or not. The documents may come from teaching and research institutions in France or abroad, or from public or private research centers.

L'archive ouverte pluridisciplinaire **HAL**, est destinée au dépôt et à la diffusion de documents scientifiques de niveau recherche, publiés ou non, émanant des établissements d'enseignement et de recherche français ou étrangers, des laboratoires publics ou privés.



Distributed under a Creative Commons Attribution 4.0 International License

Article

Beyond Explicit Acknowledgment: Brain Response Evidence of Human Skepticism towards Robotic Emotions

Robin Gigandet ^{*,†} , Maria C. Diana, Kenza Ouadada and Tatjana A. Nazir ^{*,†} 

Univ. Lille, CNRS, UMR 9193 - SCALab - Sciences Cognitives et Sciences Affectives, F-59000 Lille, France; mariachiara.diana@studenti.unicampania.it (M.C.D.); kenza.ouadada.etu@univ-lille.fr (K.O.)

* Correspondence: robin.gigandet@univ-lille.fr (R.G.); tatjana.nazir@univ-lille.fr (T.A.N.)

† These authors contributed equally to this work.

Abstract: Using the N400 component of event-related brain potentials, a neurophysiological marker associated with processing incongruity, we examined brain responses to sentences spoken by a robot that had no arms or legs. Statements concerning physically impossible actions (e.g., knitting) elicit significant N400 responses, reflecting that participants perceived these statements as incongruent with the robot's physical condition. However, this effect was attenuated for participants who indicated that the robot could have hidden limbs, indicating that expectations modify the way an agent's utterances are interpreted. When it came to statements relating to emotional capabilities a distinct pattern was found. Although participants acknowledged that the robot could have emotions, there were significant N400 responses to statements about the robot's emotional experiences (e.g., feeling happy). This effect was not modified by participants' beliefs, suggesting a cognitive challenge of accepting robots as capable of experiencing emotions. Our findings thus point to a boundary in human acceptance of artificial social agents: while physical attributes may be negotiable based on expectations, emotional expressions are more difficult to establish as credible. By elucidating the cognitive mechanisms at play, our study informs the design of social robots that are capable of more effective communication to better support social connectivity and human well-being.

Keywords: human–robot interaction; emotion and robots; N400; ERP; anthropomorphism; beliefs; social cognition; social robots; artificial social agents



Citation: Gigandet, R.; Diana, M.C.; Ouadada, K.; Nazir, T.A. Beyond Explicit Acknowledgment: Brain Response Evidence of Human Skepticism towards Robotic Emotions.

Robotics **2024**, *13*, 67. <https://doi.org/10.3390/robotics13050067>

Academic Editors: Martin Cooney, Mariacarla Staffa and Filippo Cavallo

Received: 11 March 2024

Revised: 23 April 2024

Accepted: 24 April 2024

Published: 28 April 2024



Copyright: © 2024 by the authors. Licensee MDPI, Basel, Switzerland. This article is an open access article distributed under the terms and conditions of the Creative Commons Attribution (CC BY) license (<https://creativecommons.org/licenses/by/4.0/>).

1. Introduction

In the growing field of human–robot interaction, the study of Artificial Social Agents (ASAs) represents a frontier where technology meets human social behavior. Exemplified by social robots, ASAs are not just computational tools but are computer-controlled intelligent entities capable of autonomous behavior. They are designed with the ability to recognize human emotions and to synthesize knowledge and experiences, enabling them to engage in meaningful interactions with humans [1]. The present study aims to explore nuances of human reactions to artificial as opposed to biological agents, aiming to uncover the subtle ways our social cognitive mechanisms adapt to this new category of social beings.

The evolution of human social interactions has culminated in a sophisticated set of rules that governs our social conduct [2]. These rules, which are critical for shaping our interactions, apply not only among humans but also to other 'social agents', including artificial ones [3–5]. The successful integration of ASAs into human society, therefore, hinges on the alignment of their design with these social cognitive mechanisms [6–8].

At the heart of human social interactions lies an innate need for connection [9], influenced by internal motivations and external cues [10]. The human tendency to anthropomorphize, i.e., attributing human-like qualities to non-human entities, is a testament to these social inclinations [11]. In light of this, it is widely recognized that an ASA's degree of human-like behavior and appearance increases its acceptance into human social

groups [7,12]. Studies have demonstrated that humanoid robots can provoke physiological and emotional reactions, such as increased skin conductance in response to touching a humanoid's 'intimate' areas, akin to human–human interactions [13]. Interactions with anthropomorphized entities have also been shown to elicit stronger emotional connections, as seen in augmented joy and sympathy [14]. Moreover, humanoid robots are subjected to higher moral scrutiny compared to inanimate objects [15], and brain response studies suggest that reactions to humanoid robots can mirror those seen in human–human interactions [16,17].

Yet, a closer examination of the role of anthropomorphic traits in the acceptance of a social agent reveals a more intricate picture. [4] demonstrated that humanoid robots equipped with human-like functions—such as gripping objects, but with a two instead of a five-fingered hand, which, if analogous to a human capability, would be deemed less efficient—tend to provoke more hostile reactions from humans than robots endowed with clearly non-human features, like the ability to hover objects. Their results further suggest that the negative response is less about the action's outcome, which remained consistently effective across scenarios, and more about the suboptimal method of execution according to the human body standard. [18] confirmed that human group dynamics are more accurately mirrored in interactions with anthropomorphic robots. However, she also noted that anthropomorphic robots could be favored over humans when these robots were seen as part of the ingroup and humans were viewed as part of an outgroup. Finally, in the context of aggression, although humans perceive aggression towards both humanoid robots and humans as equally immoral, the victims' response to such aggression is judged differently: retaliatory actions are deemed moral when performed by humans but not when performed by robots [19]. Collectively, these findings challenge the assumption that a simple correlation exists between the human-like appearance of ASAs and their integration into human social settings. While a human-like appearance and behavior can facilitate acceptance, they can also provoke negative responses. The social categorization of robots can depend on perceived group affiliations, and not just on their anthropomorphic features. Critically, the finding by [19] also hints at a strong anthropocentric viewpoint, where non-human agents are denied the status typically reserved for humans. This distinction, emphasizing attributes traditionally considered exclusively human—such as moral reasoning, consciousness, and emotions—invites reflections on our willingness to acknowledge certain anthropomorphic qualities in non-human agents.

Against this background, our research proposes a nuanced examination of ASA design, positing that specific design choices, particularly in anthropomorphism, may inadvertently alienate human users. Although anthropomorphism can enhance relatability, it is crucial to recognize its limits. For example, programming robots to express emotions—a domain inherently human but outside a robot's genuine experience—may create dissonance among users, leading to discomfort. Our prediction is that such an overreach into the human domain will elicit a typical human brain response to incongruity. To empirically test this, we investigated whether the discrepancy between a robot's capabilities and its actual discourse triggers such a response. We measured this reaction through brain electrical activity, specifically observing the N400 component of event-related potentials (ERPs), a neurophysiological marker associated with integrating the meaning of a word into the semantic context established by preceding linguistic and non-linguistic information [20–23].

The N400 emerges as a negative deflection within the brain's ERPs, predominantly elicited by semantic or contextual incongruence [24]. Notably, this deflection exhibits a marginally higher amplitude over the right hemisphere compared to the left and is observed with greater prominence at central and parietal electrode locations [21,24]. Typically, the N400 tends to onset around 400ms following the presentation of a critical word that renders an utterance or sentence incongruous with respect to semantic expectations established by the prior context: for instance, in the sentence "*He spread the warm bread with socks.*" the use of the word '*socks*', that leads to a semantic incongruence, would likely elicit an enhanced N400 compared to a contextually expected element such as '*butter*' [21].

The N400 effect is not only associated with language incongruity but also with action incongruity [25,26], and it has also been observed using pictures that were semantically incongruous to a prior object name [27,28]. Refs. [20,29,30] further revealed that semantic integration in language processing extends beyond the sentence level to encompass broader discourse context, showing that listeners use ongoing narrative information to interpret spoken words, thereby impacting the N400 effect regardless of the incongruity's origin.

In our research, we drew upon the protocol used by van Berkum et al. [30] to investigate whether humans exhibit a typical N400 response to incongruities when listening to a robot expressing experiences beyond its capabilities, namely emotions (e.g., “*This morning, I finished an exam first, I was happy.*” with the congruent control condition (e.g., “*This morning, I finished an exam first, I was quick.*”). In order to validate the applicability of the N400 paradigm in such a context, we first examined a more obvious discrepancy: the mismatch between a robot's discourse and its physical capabilities, i.e., an armless robot discussing knitting (Gigandet et al., 2023). This pilot study tested the paradigm's boundaries, including the creation of well-balanced linguistic stimuli for both congruent and incongruent discourse versions. In a second step, we then applied the paradigm to explore the subtler discrepancy between a robot's discourse and the emotional capacities it claims to have.

2. Pilot Study

The social robot *Buddy* from Blue Frog Robotics, which has no arms or legs (see Figure 1), served as the ASA. In addition to the experimental condition that contrasted congruent and incongruent utterances, a control condition was employed in which participants were exposed only to the robot's head to ensure that none of the sentences conflicted with the robot's physical appearance. In the experimental condition (full body) we predicted an effect of sentence congruency on the ERPs, with a higher amplitude of the negative-going N400 component to incongruent sentences. In the control condition (head only) we did not expect any differences between sentences that are incongruent with the robot's bodily appearance. On top of the ERP measures, participants rated a set of statements probing their impressions of the robot's perceived capabilities, including two items that probed whether participants considered it plausible that the robot might be concealing hidden arms or legs despite its outward design. We investigated this possibility because robots in popular culture are often displayed and depicted as having unexpected abilities and features. For instance, in the movie *Wall-E* [31], the character ‘*Eve*’ exhibits such advanced, hidden features, as does ‘*Optimus Prime*’ in the Transformers franchise [32]. This particular aspect was designed to explore whether such beliefs could alter the perception of potential incongruities between the physical characteristics of the robot and its utterances.

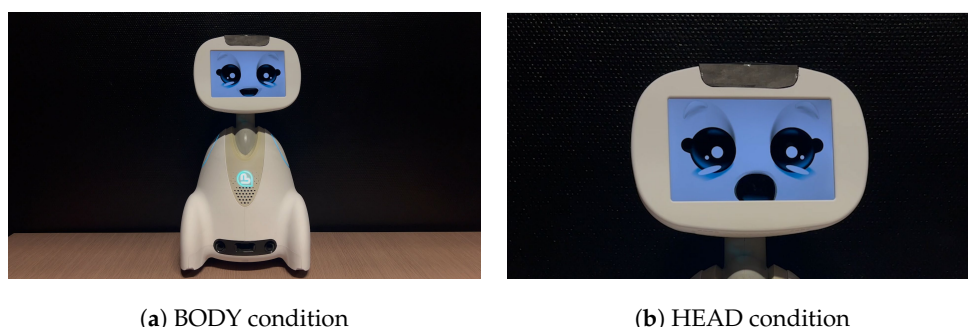


Figure 1. Screenshot for each condition of the robot body presentation. Panel (a): BODY condition. Panel (b): HEAD condition.

2.1. Method

2.1.1. Participants

A total of 56 healthy right-handed French native speakers (37 women, 17 men, 1 non-binary) between the ages of 18 and 58 ($M = 24.25$, $Mdn = 23$) volunteered to participate in

the experiment. Thirty-two participants were assigned to the condition in which the robot was presented in its entirety and 24 participants to the condition in which only the robot's head was visible.

The sample population was free of neurological or psychiatric conditions and was not receiving neuroleptic medication for medical purposes. Individuals with eye conditions such as myopia were allowed to participate and were permitted to keep their glasses on. The Edinburgh handedness inventory [33] was conducted before placing the EEG cap to confirm the participants' handedness. Participants were paid €15 for their participation.

2.1.2. Materials, Method, and Analyses

Robot Videos #1

The robot *Buddy* which we have named 'Lou' is depicted in Figure 1. A series of 13 videos were recorded, showing the robot speaking (i.e., making mouth movements) for varying durations ranging from 2 s to 8 s, in increments such as 2 s, 2.5 s, 3 s, etc. This was to ensure that the audio of the sentences, recorded separately, could be synchronized with the robot's mouth movements. The videos were captured using an iPhone 13 Pro mounted on a tripod, against a neutral black background in a room, with the robot placed on a table. They were recorded in 4K resolution at 50 frames per second, enabling the creation of two types of video with just one crop: videos showing the entire robot (BODY condition) and videos focusing solely on the robot's head (HEAD condition). Figure 1 gives screenshots of videos from each of the two conditions.

EEG Recordings #2

EEG signals were recorded at an initial sampling rate of 2048 Hz using a 64-channel Biosemi ActiveTwo system. A conductive gel was applied to each site to ensure good electrode-scalp contact, with electrode offsets controlled to stay within the range of -20 mV to 20 mV range during the experiment. To track artifacts, three additional electrodes were placed, two close to the mastoids and one below the left eye. The continuous signal was then filtered in the 0.5–30 Hz band and downsampled at 200 Hz. Independent Component Analysis (ICA) using the AMICA [34] algorithm allowed artifacts such as eye blinks, and muscular and cardiac activity to be identified and removed. Finally, the cleaned continuous data were segmented into epochs starting -150 ms before and extending to 1200 ms after the onset of each target word, using the 150 ms pre-stimulus interval as a baseline for ERP analysis. The different data processing steps were carried out using the EEGLAB version 2023.0 [35] and MNE-Python Version 1.4.0 (2023-05-10) [36] toolboxes.

Sentence Material #3

We designed 60 sentences in French, covering a range of simple topics, from simple gestures such as picking up an object or petting a cat to hobbies such as gardening or running (see Appendix A Table A1). For each sentence, we built two alternative endings. The first type of ending comprised a target word that was congruent with the robot's physical appearance in both the HEAD and BODY conditions (e.g., "*I hope one day to go to the very top of the Eiffel Tower. To go up, I'll take the lift.*"). The second type of ending had a target word that was incongruent in the BODY condition, referring to actions that involve arms/hands or legs (e.g., "*I hope one day to go to the very top of the Eiffel Tower. To go up, I'll take the stairs.*"). Such incongruence could not occur in the HEAD condition, as participants could not see that the robot lacked extremities.

As outlined in Table 1, the target words in both conditions (e.g., lift/stairs) were controlled for various linguistic properties taken from the database LEXIQUE [37]. It is important to emphasize that *cloze probability*, which is the likelihood of a sentence concluding with a specific word based on context, exerts an influence on the N400 component [38]. A lower cloze probability signifies a less anticipated word, demanding more effort in semantic integration and thus potentially evoking a more pronounced N400 response. This underscores the need for precise control. To manage this variable, each of the 60 French

sentences was evaluated by 25 human raters who were asked to select one of two alternative words to complete the sentence, for instance: “[...] *To go up, I’ll take the...*” (lift/stairs). Raters participated on a voluntary basis and were recruited locally among students and researchers from the Université de Lille. Items with imbalanced cloze probabilities were substituted and subjected to reevaluation by a separate set of 25 raters. The definitive stimulus lists were determined after five rounds of testing, each involving at least 25 different raters. Due to the inherent challenge of achieving perfect balance for cloze probability in all sentences, some sentences were accepted with a lower bound cloze probability of 0.30. However, when averaged across the entire sentence list, the cloze probability was 0.50. Owing to the constraints imposed by balancing cloze probability, it was not possible to achieve perfect balance for certain other linguistic variables, such as the number of letters, syllables, and phonemes. Consequently, the HEAD condition played a pivotal role in validating our sentence material. We considered that the word stimuli were well balanced if the ERPs in the HEAD condition, which had no sentences conflicting with the robot’s physical appearance, showed no significant differences in the two sentence conditions. A final point that needed attention was the average length of our target words (7–8 letters), which largely exceeded the length typically used in an N400 paradigm (4–5 letters; e.g., [38]). When words are becoming longer, the Phonological Uniqueness Point (UP; [39]) moves further away from the word beginning. The phonological UP refers to the moment in the auditory processing of spoken language where a word can be uniquely identified based on its phonological properties before it is fully pronounced [39]. For instance, the UP for the word “congruence” (kɔ̃ŋgʁɑ̃s) occurs after the sounds making up “cong-” (kɔ̃ŋg), because there are no other words in the English language that start with these phonological elements. Hence, listeners do not need to hear an entire word to understand it but can often predict the word partway through. The position of the UP in a word affects the temporal delay of the N400 peak [38]. Since the UPs in our target words occur on average at or after the fifth letter (see Table 1), we expect that the N400 peak occurs at a later time than described in most studies using this paradigm.

Table 1. Characteristics of Target Words in the Pilot Study: Linguistic and Phonological Measures.

Measure	Target-Word Congruence		Mann–Whitney
	Incongruent	Congruent	
Phonological Uniqueness Point (puphon)	4.967 (SD = 1.437)	5.683 (SD = 1.556)	U = 1273.5, <i>p</i> = 0.004
Lemma Frequency in Films (freqlemfilms2)	70.389 (SD = 131.578)	161.741 (SD = 398.826)	U = 1505.0, <i>p</i> = 0.122
Word Frequency in Films (freqfilms2)	20.110 (SD = 42.478)	41.921 (SD = 135.192)	U = 1585.5, <i>p</i> = 0.261
Lemma Frequency in Books (freqlemlivres)	84.429 (SD = 135.024)	121.397 (SD = 210.050)	U = 1531.0, <i>p</i> = 0.158
Word Frequency in Books (freqlivres)	23.140 (SD = 38.771)	28.730 (SD = 58.149)	U = 1602.0, <i>p</i> = 0.299
Number of Orthographic Neighbors (voisorth)	3.650 (SD = 3.512)	2.533 (SD = 2.541)	U = 2084.0, <i>p</i> = 0.132
Number of Phonological Neighbors (voisphon)	8.000 (SD = 7.415)	5.217 (SD = 4.865)	U = 2127.5, <i>p</i> = 0.084
Number of Syllables (nbsyll)	2.250 (SD = 0.751)	2.650 (SD = 0.732)	U = 1280.0, <i>p</i> = 0.003
Number of Letters (nblettres)	7.050 (SD = 1.881)	7.883 (SD = 1.914)	U = 1323.5, <i>p</i> = 0.011
Number of Phonemes (nbphons)	5.167 (SD = 1.607)	6.000 (SD = 1.636)	U = 1234.0, <i>p</i> = 0.002
Cloze probability	50.000 (SD = 11.058)	50.000 (SD = 11.058)	U = 1788.0, <i>p</i> = 0.951
Word types			
Nouns		3 (5%)	
Verbs		18 (30%)	
Adjectives		39 (64%)	

SD indicates standard deviation. U and *p* values are from the Mann–Whitney test for comparing incongruent and congruent groups. Frequency of use of words within the French language: the most commonly used words were chosen to facilitate recognition and understanding by the participants. The frequency of the lemma in films and books: words whose canonical form (lemma) appears frequently in films and books were preferred, as participants are likely to be more familiar with these words. Number of syllables: words with fewer syllables were preferred, as they are generally easier and quicker to understand. The number of orthographic and phonological neighbors: words with fewer neighbors (i.e., words that are similar in spelling or pronunciation) were preferred.

Then, the 2×60 sentences were divided into two equivalent lists, each comprising 30 sentences with congruent endings and 30 with incongruent endings. The lists were distributed evenly, ensuring that each list was presented to the same number of participants. This approach ensured that each participant was exposed to only one version of each sentence (either with a congruent or incongruent ending). As a result, across all participants each sentence was heard in both versions: the first group received the sentence with a congruent ending, while the second group heard the same sentence with an incongruent ending. This setup maintained balance by ensuring that an equal number of participants heard both the congruent and incongruent versions of each sentence.

Sentence Recording #4

The audio recordings were made with a female speaker, using a microphone (Shure SM58), an audio interface (UMC202HD), a laptop computer (MacBook Pro M1 Max 2021, Apple, Cupertino, CA, USA) and the software Audacity 3.2. The audios were adjusted to remove background noise and long silences.

The use of a recorded human voice rather than a text-to-speech (TTS) voice module was preferred in order to minimize potential variations in the perception of articulation and intonation, which could otherwise influence participants' responses, particularly the N400 component. In addition, this approach enabled the precise control of the timing and presentation of the verbal stimuli, which is crucial for EEG.

Video Implementation #5

For video editing, audio and video were synchronized using Adobe Premiere Pro, October 2022, Version 23.0 and exported in 1080p at 50 frames per second. Each video was structured as follows: the video began with a one-second silence, then the robot uttered the sentence and the video ended with a one-second silence. The video display for participants on the computer screen was created using Psychopy [40].

Estimation of Robot's Cognitive and Physical Abilities #6

To assess participants' perceptions of the robot, our study included the use of a translated version of the Ho and MacDorman [41] questionnaire. This choice was motivated by the clear distinction it provides between the dimensions of Humanness, Eeriness and Attractiveness: Each of these three dimensions comprises numerous items, capturing various aspects of human perception and emotional response, enabling in-depth measurement of attitudes towards the robot. We also used five additional statements that were tested by Nazir et al. [4]. The statements focused on the following qualities:

1. Imagination: *"Lou can imagine and invent from its experiences"*
2. Intelligence: *"Lou can adapt to its environment and interact with others"*
3. Independence: *"Lou is autonomous and does not depend on others"*
4. Creativity: *"Lou can find original solutions beyond its experiences and create new ones"*
5. Talkativeness: *"Lou talks a lot and likes to talk a lot"*

These five traits were taken from the work of Haslam et al. [42] on essentialist beliefs concerning human personality. Essentialist beliefs refer to the practice of considering a trait to be innate and biologically based and not acquired (see, e.g., [43]). In the work of Haslam et al. [42], personality traits are essentialized if they are regarded as aspects of human nature.

Participants responded to these statements by positioning the computer cursor on a scale ranging from 0 (meaning *"Strongly Disagree"*) to 100 (*"Strongly Agree"*). Finally, using the same 0–100 scale, participants were also asked to estimate their beliefs about the robot potentially having concealed arms and legs. The statements were as follows:

- Hidden arms: *"Lou has concealed arms"*
- Hidden legs: *"Lou has concealed legs"*

Statistical Analyses #7

For the analysis of ERPs, a Mixed Linear Model (MLM) was chosen because of the non-normality of distributions and the heterogeneity of variances, which allows for the accommodation of interindividual variability and ensures robust estimates in the face of these irregularities. Due to the small size of certain sub-samples and for a nuanced assessment of within-subject effects and interactions, repeated measures ANOVA was used as a complementary analysis following the MLM. For the questionnaire, when the data did not follow a normal distribution, the Mann–Whitney test was used. In some cases where the data were normally distributed and had equal variances, confirmed by Levene’s test, a Student’s *t*-test for independent samples was used.

2.1.3. Procedure

The study was conducted in the EEG laboratory of the EQUIPEX IrDive platform in Tourcoing (France). First, participants were given an information sheet and requested to provide written informed consent, as per the ethical guidelines. Upon providing consent, participants were escorted into the experimental room, the setup of which is depicted in Figure 2b. Participants were presented with a picture of the robot’s head and asked if they were familiar with the robot. Those who already encountered the robot were automatically assigned to the BODY condition to prevent their prior knowledge from influencing the data: this selective assignment reflects the higher number of participants in the BODY condition than in the HEAD condition.

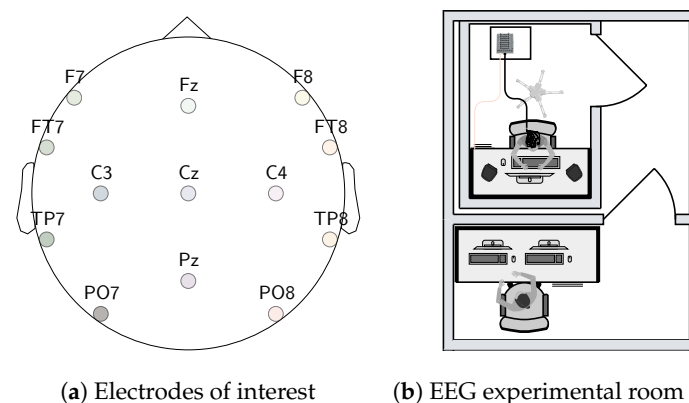


Figure 2. Electrodes of interests and Experimental room setup. Panel (a): Electrodes of interest. Panel (b): EEG experimental room setup.

The EEG cap was positioned on participants’ heads, after which they were left alone in the room, receiving instructions to minimize movement and remain as still as possible while the robot spoke, to reduce the risk of EEG signal interference from jaw muscles or eye blinks. Participants initiated the task by pressing a key on the keyboard and proceeded to watch their assigned list of 60 videos, a process that took approximately 12 min. After completing this task, the electrodes were removed. The participants’ perceptions of the robot were then assessed using the questionnaire and the rating of the different statements.

The experiment started with a 20-s instructional segment delivered by the robot (repeating what the experimenter had said previously). Depending on the experimental group, the robot was presented in its entirety or only its head was visible. The instructions were as follows (English translation):

“Hello, my name is Lou. Thank you for participating in this experiment. I will be speaking to you while you wear a cap that measures your brain activity. Starting from each beep sound, please remain as still as possible and avoid blinking. You may blink again when the screen turns black, which happens each time I stop talking.”

During this instruction, a warning tone was emitted when the robot said the word ‘beep’ serving as a practical example for the participants. This warning tone was a 300 Hz

sound lasting 300 ms. Following these instructions, a text appeared on the screen, informing the participants that they could start the experiment by pressing the spacebar. Upon pressing the spacebar, the experiment started. The screens were displayed in the following sequence:

1. A 1000 ms black screen, initiated with a 300 ms warning tone
2. A video of the robot uttering the sentence
3. A 2500 ms black screen

The videos with the speaking robot were presented in a different random order for each participant while ensuring that there were no more than three consecutive videos of the same type (incongruent or congruent). At each step of the routine, a trigger was sent to the EEG acquisition system so that the EEG data could be synchronized with the videos to enable subsequent data analysis. Each sequence had its own trigger (1000 ms black screen with warning tone, the video of the robot, 2500 ms black screen), and a different trigger was sent depending on whether the target word was congruent or incongruent. During data analysis, only the target word triggers were used: these triggers enable the EEG data to be broken down into segments—epochs—for each video, so that the EEG data can be analyzed according to the condition (congruent or incongruent). Figure 3 illustrates a trial sequence for the experiment.

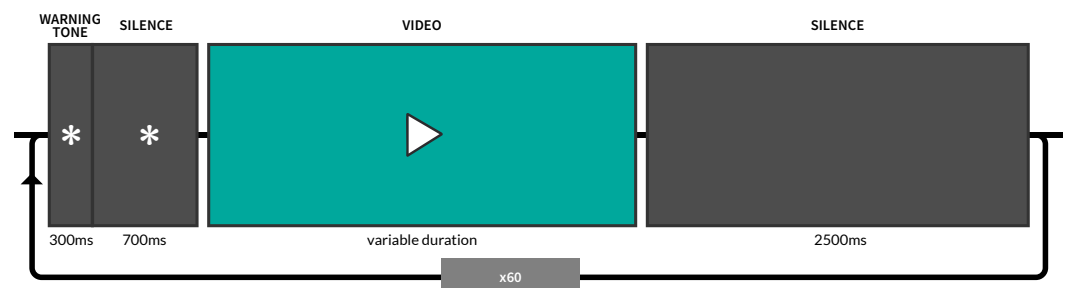


Figure 3. Experimental trial sequence.

2.2. Results

2.2.1. ERPs

Preliminary Analyses #1

Given that the HEAD condition served as a control for the quality of our sentence material, a preliminary analysis centered on this condition. For illustration, the left panel of Figure 4 plots the ERP waveforms at the central electrodes Cz and Pz for the two sentence types ('congruent' and 'incongruent') in the HEAD condition. No discernible differences were observed between the two sentence types in the data, indicating that they did not differentially affect participants' ERPs, thus confirming sentences were well-balanced. However, as expected, the peak of the negative-going ERP component in our experiment occurred more than 100 ms later than what is typically observed in standard N400 experiments. To verify whether this delay is indeed related to the late phonological Uniqueness Point (UP) in the target words, we selected from the 120 target words those with a UP at the third or fourth letter in the word. We then contrasted these with target words whose UP occurs at the sixth or seventh letter.

Consistent with our hypothesis, the latency of the peak in the negative-going ERP component was affected by the UP. The later the UP occurred in a word, the more delayed the average latency of the N400 peaks was observed. For words with a UP at the sixth or seventh letter, the average N400 peak latency was 656 ms (amplitude = $-3.878 \mu\text{V}$), while for words with a UP at the third or fourth letter, it was 573 ms (amplitude = $-2.768 \mu\text{V}$). A Mann–Whitney test revealed that this difference was significant ($U = 36.0, p = 0.0136$). Therefore, we can confidently attribute the observed delay to the specific characteristics of our stimuli, rather than to an alternative underlying cognitive mechanism of the ERP

component. A similar delay was observed in a study by van Berkum [30], who also used rather long spoken target words.

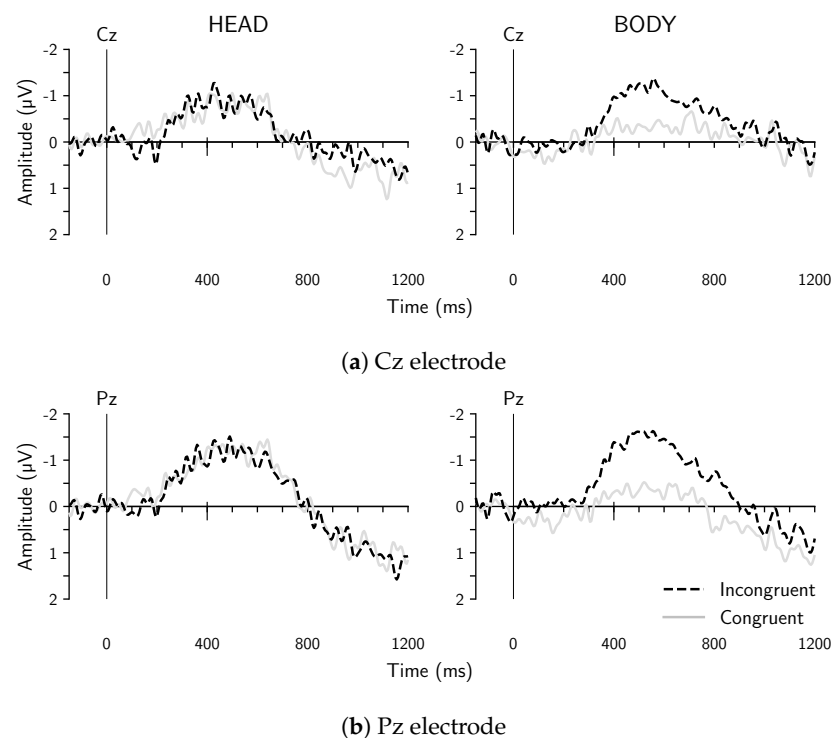


Figure 4. Grand average ERP waveforms from Cz and Pz electrode sites, for utterances that were congruent (solid gray lines) or incongruent (dashed black lines) with respect to the physical appearance of the robot. Panel (a): Cz electrode for the control (left) and experimental (right) conditions. Panel (b): Pz electrode.

Main Analyses #2

The right panel in Figure 4 plots the ERP waveforms at electrodes Cz and Pz for the two sentence types in the BODY condition. As evident from the figure, a clear N400 effect is observed, with larger amplitudes for sentences that end with target words that are incongruent with the physical characteristics of the robot. For the statistical test, and based on the preliminary analysis, we opted not to use mean amplitude values (computed for each subject and condition) in the standard N400 latency range of 300–500 ms post-target word onset. Instead, following the approach used by van Berkum et al. [30], we chose a time window of interest extending from 500 to 700 ms, focusing on the specific signals of 13 representative electrodes, illustrated in Figure 2a.

The averaged amplitudes across the 500–700 ms time window at the 13 electrodes are depicted in Figure 5, the left panel plots data for the HEAD condition, and the right panel for the BODY condition. As expected, the BODY condition revealed a clear N400 effect across all electrodes, where sentences concluding with a word incongruent with the physical capacity of the robot elicited a more pronounced negative deflection compared to those that were congruent. In the HEAD condition, such an effect was not seen.

The data were analyzed using a Mixed Linear Model (MLM). The independent variables (fixed effects) were CONGRUENCE (congruent vs. incongruent) and GROUP (body vs. head), including their interaction. Participants were treated as random effects and random variation in the response to CONGRUENCE was modeled for each participant. The MLM approach allowed us to treat participants as random effects to account for baseline variability and individual differences. A significant interaction between CONGRUENCE and GROUP was revealed (Coef. = 0.617, SE = 0.225, $z = 2.741$, $p < 0.01$), indicating that the influence of CONGRUENCE on N400 amplitude was contingent upon the group to which participants were assigned. Specifically, this interaction suggests that the difference

in N400 amplitude response to incongruent versus congruent stimuli is less pronounced in participants who viewed the robot’s head compared to those who viewed the entire body. The group variance was 0.599 (SE = 0.143), reflecting the variability of responses between participants. This finding implies that participants in the HEAD condition experienced a moderated effect of incongruence, with a relatively smaller increase in N400 amplitude for incongruent stimuli, and highlights how exposure to the whole body or just the head of the robot modulates the N400 component (see Figure 6 for the interaction diagram).

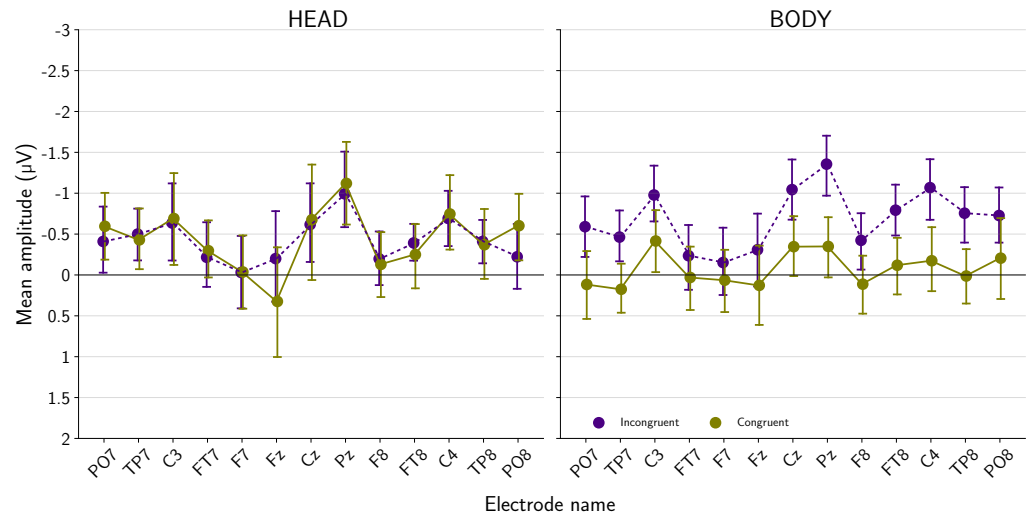


Figure 5. Mean amplitudes across the 13 representative electrodes during the 500–700 ms window post-stimulus onset. Error bars correspond to 95% confidence intervals. (Left) panel: Results for HEAD group. (Right) panel: results for BODY group.

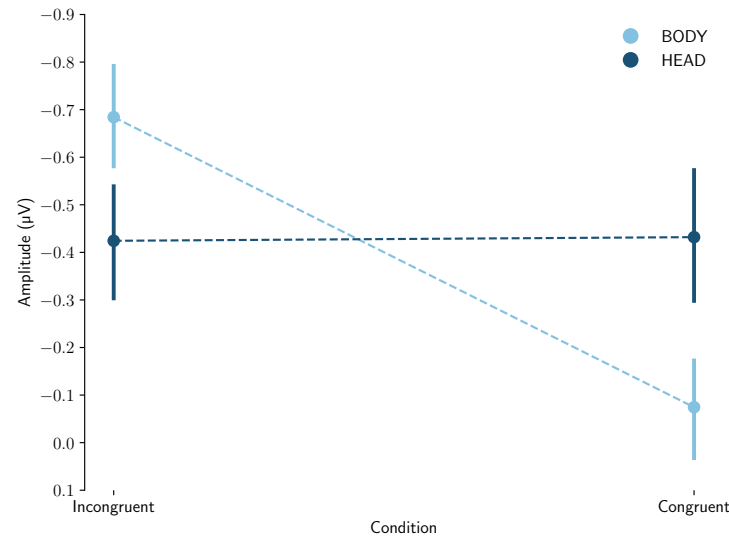


Figure 6. Interaction diagram showing the effect of Condition (congruent vs. incongruent) and Group (BODY vs. HEAD) on the N400 amplitude.

Explicit Ratings of the Robot’s Cognitive and Physical Abilities #3

Figure 7 shows the mean scores for the five statements that explored participants’ perceptions of the robot (*Imagination, Intelligence, Creativity, Independence* and *Talkativeness*), along with the corresponding 95% confidence intervals. A Mann–Whitney U test showed that none of the five statements distinguished between participants in the BODY and the HEAD conditions. A two-tailed two-sample *t*-test also failed to reveal any significant difference between the mean composite scores of the five statements of the two groups,

$t(54) = 0.836, p = 0.406$. These results suggest that participants' perceptions of the robot, based on the essentialized human personality descriptors, did not differ in the two groups.

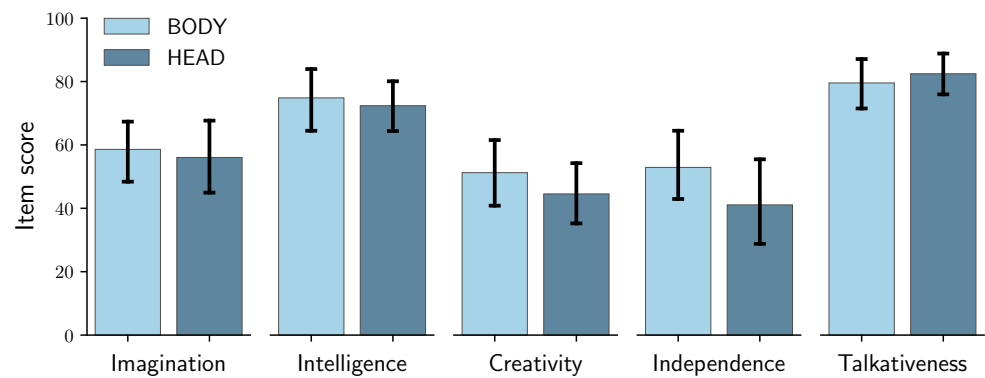


Figure 7. Average scores and corresponding 95% confidence intervals for the five statements that explored perceptions of the robot.

Concerning the Ho and MacDorman questionnaire [41], a repeated measure ANOVA with INDICATOR (humanness, attractiveness and eeriness) and GROUP (body vs. head) as the within and between factors, showed a significant effect of INDICATOR ($F = 136.1385, p < 0.001, \eta_p^2 = 0.716$). However, the effect of GROUP failed to be significant ($F = 3.5852, p = 0.0637, \eta_p^2 = 0.0623$), and the interaction between the GROUP and the INDICATOR was not significant either ($F = 2.0471, p = 0.1340, \eta_p^2 = 0.0365$). Table 2 gives the composite scores for Humanness, Attractiveness and Eeriness indices.

Figure 8 presents boxplots comparing perceptions of the dimensions of Humanness, Eeriness and Attractiveness in the BODY (light blue) and HEAD (dark blue) conditions.

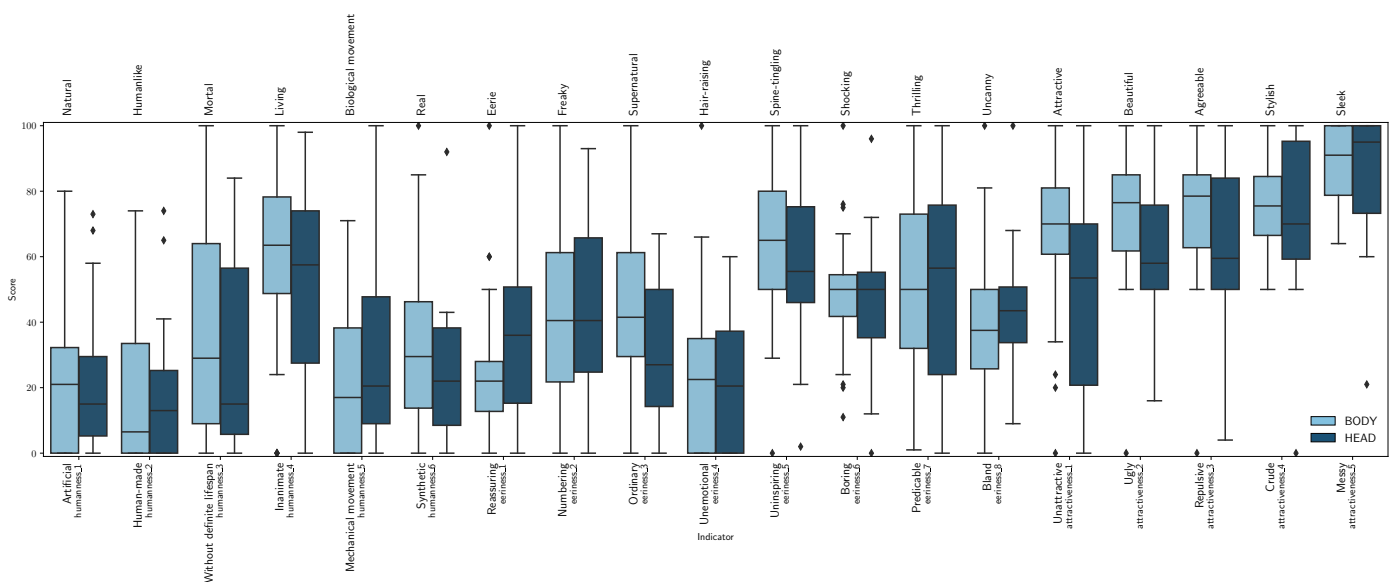


Figure 8. Boxplots of the participants' ratings of the robot Humanness, Eeriness, and Attractiveness from the Ho and MacDorman questionnaire [41] together with corresponding 95% confidence intervals.

Finally, Table 3 provides a summary of how participants perceived the possibility of the robot having hidden limbs, in the HEAD and BODY conditions. The data reveal that despite evidence to the contrary, many participants in the BODY conditions rated this possibility as larger than zero. A reliability test via Cronbach's alpha, indicated a high internal consistency ($\alpha = 0.827$) among participant responses regarding the robot's hidden limbs, substantiating the reliability of these measures.

Table 2. Composite Scores for Humanness, Attractiveness and Eeriness Indices in the Pilot Study.

Group	Indicators		
	Humanness	Eeriness	Attractiveness
Head	M = 28.812, SD = 14.979	M = 41.958, SD = 11.186	M = 65.467, SD = 18.875
Body	M = 32.250, SD = 14.385	M = 42.484, SD = 13.705	M = 76.113, SD = 13.754

Table 3. Scores about perceived hidden limbs.

Group	Hidden Limbs		
	Arms	Legs	Arms & Legs Mean
Head	M = 31.81, SD = 35.78, Mdn = 18.00, min = 0, max = 100	M = 20.81, SD = 27.27, Mdn = 7.00, min = 0, max = 80	M = 26.31, SD = 28.93, Mdn = 19.50, min = 0, max = 86
Body	M = 55.00, SD = 37.63, Mdn = 63.50, min = 0, max = 100	M = 41.08, SD = 34.60, Mdn = 42.50, min = 0, max = 100	M = 48.04, SD = 33.27, Mdn = 50.00, min = 0, max = 100

'Group' means the part (whole body vs. head only) participants were able to see.

2.2.2. The Impact of Participant's Beliefs in the BODY Condition

In an exploratory analysis we, therefore, investigated whether participants' beliefs in the BODY condition could influence brain responses. The belief in the robot's hidden limbs was anticipated to attenuate the perceived incongruence between its appearance and speech, thus reducing the N400 effect. Furthermore, in such cases, we anticipated that due to the reduced dissonance, the overall perception of the robot would be more positive.

ERPs #1

From the total of 32 participants in the BODY condition, only 12 participants unequivocally asserted that the robot had no hidden arms or legs, giving a rating of 0. In contrast, scores among the remaining 20 varied from 5 to 86, indicating that they envisaged the robot might have hidden limbs.

To assess the potential impact of participants' beliefs on the ERPs, we contrasted the data from the 12 participants who did not believe in the robot's hidden limbs ("non-believer") who scored 0, and the 12 participants who highly thought that the robot could have hidden limbs ("believer") with ratings from 33 to 86 (M = 59.458, Mdn = 60.5) (Note, that preliminary data for this comparison with 2×10 participants were reported in the proceeding of the ARSO 2023 [44]). Figure 9 plots the mean amplitudes within the 500–700 ms interval across the 13 electrodes for both congruent and incongruent sentences. As the figure shows, the group of participants who categorically excluded the possibility of the robot having hidden limbs demonstrated significantly greater N400 amplitude in responses to sentences that were incongruent with the robot's appearance compared to sentences that were congruent. Conversely, participants who considered the possibility of hidden limbs showed a lower difference in the ERPs amplitudes between the two types of sentences.

A Mixed Linear Model with BELIEFS (believer vs. non-believer) and CONGRUENCE (congruent vs. incongruent) as fixed effects were used to analyze the data. Participants were treated as random effects and random variation in the congruence response was modeled for each participant. The model failed to reveal a significant interaction between the factors CONGRUENCE and BELIEFS (Coef. = 0.608, SE = 0.374, $z = 1.625$, $p = 0.104$), probably because of the limited number of participants in each group. The GROUP variance was 0.535 (SE = 0.193). However, when separate repeated measures ANOVAs were carried out for each group, a highly significant main effect of CONGRUENCE was found for the "non-believers" ($F(1,11) = 12.192$, $p = 0.005$), while no significant difference was found for "believers" ($F(1,11) = 3.478$, $p = 0.089$) (see Figure 10 for interaction diagram). Hence, we cautiously consider the possibility that participants' beliefs about hidden extremities modulate the strength of the N400 effect to incongruence between a robot's physical capabilities and its utterances.

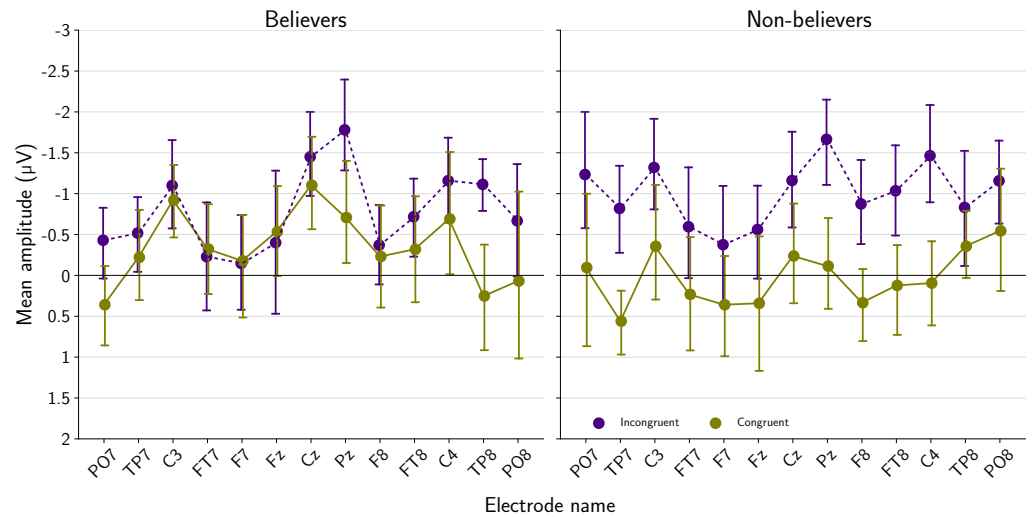


Figure 9. Mean amplitudes across the 13 representative electrodes during the 500–700 ms window post-stimulus onset. Error bars correspond to 95% confidence intervals. **(Left)** panel: results for “believers”. **(Right)** panel: results for “non-believers”.

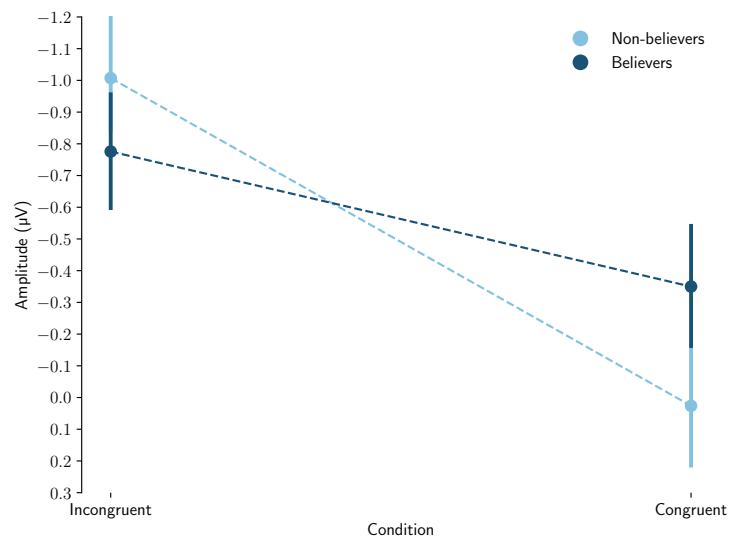


Figure 10. Interaction diagram showing the effect of Condition (congruent vs. incongruent) and subgroup (believers vs. non-believers) on the N400 amplitude. Each point represents the average amplitude for a given condition and subgroup.

Explicit Ratings of the Robot’s Cognitive and Physical Abilities as a Function of Beliefs #2

Figure 11 contrasts scores of the group of “believers” to the “non-believers” for the five statements that explored participants’ perceptions of the robot (*Imagination, Intelligence, Creativity, Independence and Talkativeness*), along with the corresponding 95% confidence intervals. For all statements higher scores were seen in the “believer” group, confirming our assumption that perceived dissonance between the robot’s capacity and its discourse could trigger a more negative perception of the robot. A two-sample *t*-test (one-tailed) revealed a significant difference in the mean composite rating scores, $t(22) = 1.865, p = 0.037$. Participants from the “non-believers” group had generally lower scores ($M = 54.766; SD = 19.066$) compared to those of the “believers” group ($M = 70.216; SD = 21.441$). This outcome indicates that a more positive general evaluation of the robot was observed by those who remained open to the possibility of hidden limbs.

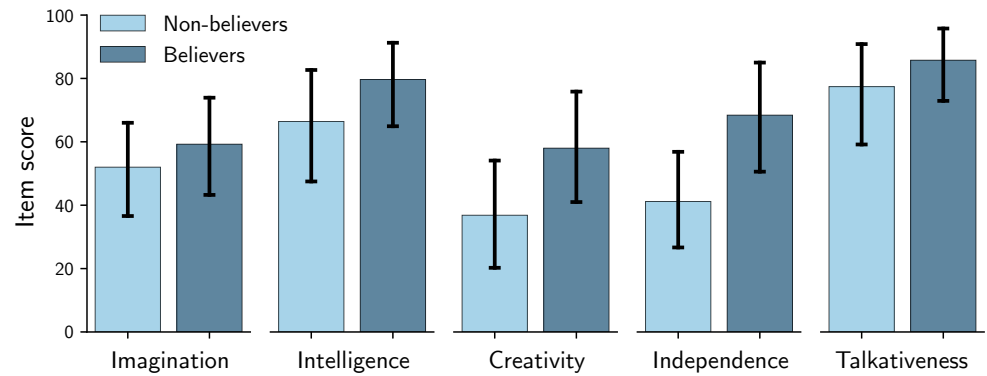


Figure 11. Average scores and corresponding 95% confidence intervals for the five statements that explored perceptions of the robot in the “believers” and “non-believers” subgroups.

Concerning the Ho and MacDorman questionnaire [41], Mann–Whitney U tests did not reveal significant differences between the two groups in any tested dimension suggesting that beliefs about the presence of hidden limbs do not significantly influence the overall perception of the robot on these indicators. Table 4 gives the composite scores for Humanness, Attractiveness and Eeriness Indices.

Table 4. Composite Scores for Humanness, Attractiveness and Eeriness Indices in the Pilot Study subgroup beliefs.

Group	Indicators		
	Humanness	Eeriness	Attractiveness
Non-believers	M = 29.653, SD = 14.250	M = 42.927, SD = 9.132	M = 71.983, SD = 11.895
Believers	M = 32.708, SD = 14.903	M = 43.656, SD = 19.680	M = 74.950, SD = 15.262

Figure 12 presents boxplots comparing perceptions of the dimensions of Humanness, Eeriness and Attractiveness in the ‘non-believer’ (light blue) and ‘believer’ (dark blue) groups.

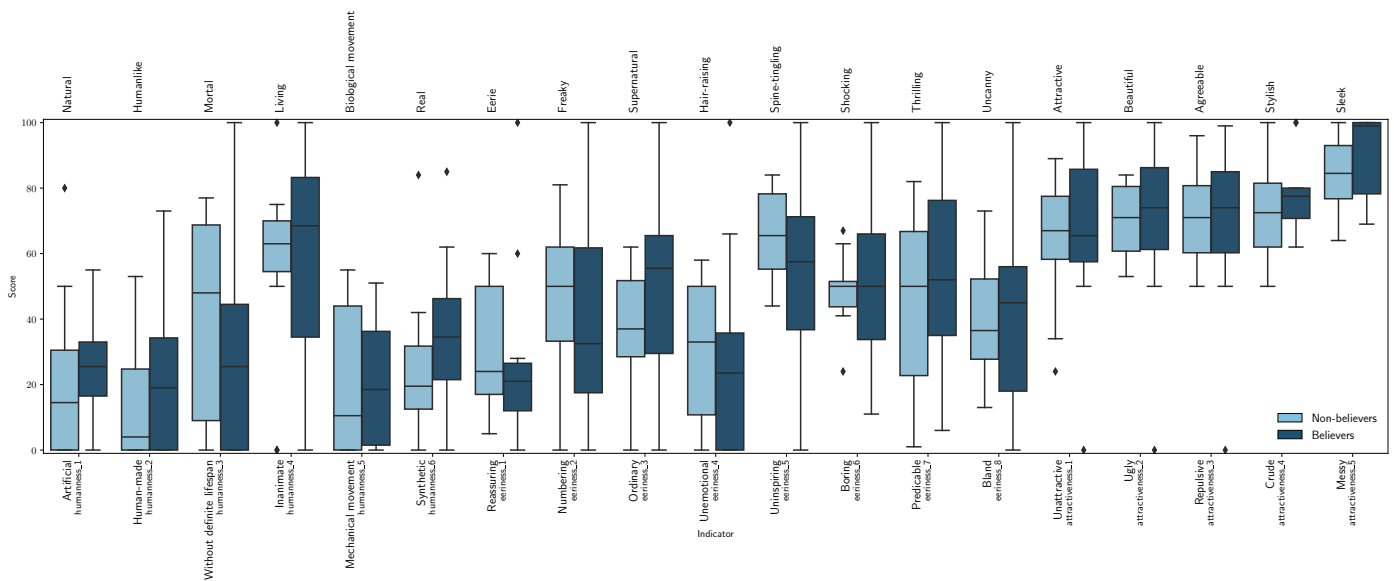


Figure 12. Boxplots of the participants’ subgroups perceptions of the robot Humanness, Eeriness, and Attractiveness from the items of Ho and MacDorman questionnaire [41], with corresponding 95% confidence intervals.

2.3. Discussion

Our pilot study demonstrates that a mismatch between an agent's physical capacities and its verbal statements can trigger the neurophysiological marker associated with processing semantic incongruity [21]. Specifically, when participants viewed the robot's entire body, sentences depicting actions impossible for the robot to perform elicited a larger N400 deflection than sentences depicting possible actions. When participants only saw the robot's head, this phenomenon was neutralized because the conflicting elements (i.e., the missing limbs) were not visible. This absence of effects in the HEAD condition suggests that our 'congruent' and 'incongruent' sentences were equivalent, despite some unbalanced linguistic variables. Therefore, we can attribute the N400 effect in the BODY condition to perceived incongruency with the speaking agent. Our findings thus reinforce that the N400 reflects the integration of multimodal information, including visual and contextual cues, in the semantic evaluation of discourse (see [20]).

Critically, an exploratory analysis of the data from the BODY condition indicates a modulation of the N400 effect by the participants' individual beliefs, specifically regarding the robot's potential for hidden arms and legs. Participants who were considering the possibility of such hidden limbs showed a reduced N400 effect for sentences with incongruent endings, indicating they found these sentences more plausible given their beliefs. Moreover, these beliefs appeared to influence the perception of the robot, as evidenced by ratings using essential human personality descriptors (*Imagination, Intelligence, Creativity, Independence* and *Talkativeness*; based on [42]). Participants identified as 'non-believers' were less likely to attribute human-like qualities to the robot. By contrast, the Ho and MacDorman questionnaire [41] did not distinguish between participants groups. The belief-driven modulation of the N400 suggests that individuals' mental frameworks affect the processing of multimodal information. Such flexibility underscores the potential of the N400 paradigm to further investigate how humans interpret emotional expressions from robots, given that emotions are often inferred rather than directly observed.

3. Main Study

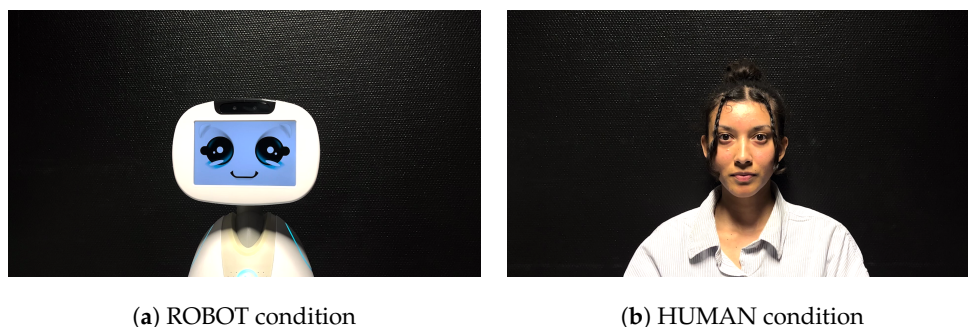
Our main study aimed to determine how individuals react to a robot's verbal expressions about emotions, compared to its discussions on non-emotional topics, considering that emotions are beyond the experiential capacity of artificial agents. If a human listener does not attribute emotional experience to a robot, we should observe a characteristic N400 response to the robot's attempts at discussing emotions. Like in the pilot study, we included a control condition in which the same sentences were spoken by a human. When expressed by a human, there should be no significant difference in the N400 response between emotional and non-emotional content.

3.1. Method

The main study contrasts videos featuring a robot (ROBOT condition) with those featuring a human speaker (HUMAN condition) delivering emotionally laden and emotionally neutral sentences (see Figure 13). Note, that the depiction of the robot is similar to that of the human speaker, and does not show that the robot has no extremities. This neutralized the influence of this factor on participants' perception. Unless otherwise specified, the main study adhered to the same conditions as the pilot study in terms of materials, methods, analyses, and procedures.

3.1.1. Participants

The population comprised 50 healthy native French speakers (42 women, 6 men, 2 nonbinary), aged between 18 and 58 years ($M = 23.16$, $Mdn = 21$), recruited under criteria consistent with the Pilot Study. None of the participants had participated in the Pilot Study.



(a) ROBOT condition (b) HUMAN condition
Figure 13. Screenshot for each condition of the agent presentation. Panel (a): ROBOT condition. Panel (b): HUMAN condition.

3.1.2. Materials

Agents Videos and Sentence Material #1

Although a different human voice from the Pilot Study was used to dub the videos, it was relatively close in timbre, rhythm, and intonation. Specifically, this voice was that of the human actress, used in both the Human and the Robot conditions. Having the same audio in the two conditions allowed us to isolate the effect of agent appearance (robotic vs. human) on perceived emotion attribution, providing a robust basis for evaluating the impact of the agent type without the influence of vocal variation. The narratives in the videos were designed to refer to a wide range of situations and emotional reactions, reflecting the experiences and reactions of everyday life (see Appendix A Table A2). They covered topics such as unexpected challenges, social interactions, and personal accomplishments (e.g., “Hier on m’a invité à participer aux tâches ménagères, j’étais *ravie*.”, approximate English translation “Yesterday I was invited to help with the housework, I was *delighted*.”). These sentences were contrasted to an emotionally neutral counterpart (e.g., “Hier on m’a invité à participer aux tâches ménagères, j’étais *opérationnelle*.”, approximate English translation “Yesterday I was invited to help with the housework, I was *ready-to-go*.”). Sentences with emotional content included 6 distinct emotions with 10 sentences dedicated to each (*happiness, fear, anger, sadness, disgust and surprise*).

Target word characteristics are given in Table 5. Note, that the cloze probability for the two-sentence condition was significantly different. However, given the small total difference (0.49 versus 0.51) we did not expect substantial discrepancies between the two conditions due to this variable. Like in the pilot study, the HUMAN condition served to validate our sentence material.

Table 5. Characteristics of Target Words in the Main Study: Linguistic and Phonological Measures.

Measure	Target-Word Congruence		Mann–Whitney
	Incongruent	Congruent	
Phonological Uniqueness Point (puphon)	5.983 (SD = 1.384)	6.767 (SD = 1.760)	U = 1296.0, <i>p</i> = 0.007
Lemma Frequency in Films (freqlemfilms2)	15.853 (SD = 41.232)	40.021 (SD = 164.579)	U = 1526.5, <i>p</i> = 0.151
Word Frequency in Films (freqfilms2)	6.109 (SD = 17.514)	10.004 (SD = 37.354)	U = 1459.0, <i>p</i> = 0.073
Lemma Frequency in Books (freqlemlivres)	18.304 (SD = 30.295)	52.965 (SD = 212.000)	U = 1948.0, <i>p</i> = 0.438
Word Frequency in Books (freqlivres)	6.205 (SD = 13.655)	12.887 (SD = 39.819)	U = 1789.5, <i>p</i> = 0.958
Number of Orthographic Neighbors (voisorth)	1.483 (SD = 1.444)	1.400 (SD = 1.976)	U = 2018.5, <i>p</i> = 0.235
Number of Phonological Neighbors (voisphon)	3.300 (SD = 3.077)	2.667 (SD = 4.620)	U = 2293.5, <i>p</i> = 0.008
Number of Syllables (nbsyll)	2.750 (SD = 0.680)	2.917 (SD = 0.907)	U = 1637.5, <i>p</i> = 0.356
Number of Letters (nblettres)	8.117 (SD = 1.574)	8.867 (SD = 2.054)	U = 1407.5, <i>p</i> = 0.036
Number of Phonemes (nbphons)	6.117 (SD = 1.354)	7.050 (SD = 1.872)	U = 1219.5, <i>p</i> = 0.001
Cloze probability	49 (SD = 6.371)	51 (SD = 6.575)	U = 1425.5, <i>p</i> = 0.047
Word types			
Nouns		1 (2%)	
Verbs		13 (22%)	
Adjectives		46 (76%)	

Estimation of Agent's Cognitive Abilities #2

As in the Pilot Study, we used the five items of Nazir et al. [4] as well as the Ho and MacDorman questionnaire [41] in our Main Study for both agents (ROBOT and HUMAN): the aim was to have a comprehensive experimental plan that examines human-likeness in both artificial and human agents. We also aimed to establish a baseline of human likeness against which artificial agents could be compared. Note, that a direct application of the Ho and MacDorman questionnaire to evaluate humans may not be entirely appropriate, as the scale is tailored to responses elicited when facing non-human entities. The results for humans should, therefore, be interpreted with caution. Participants beliefs about the robot potentially having emotional capacities (*express* and *feel* emotions) were probed by the two statements:

- Express emotions: *Lou can express emotions*
- Feel emotions: *Lou can feel emotions*

3.2. Results

3.2.1. ERPs

Figure 14 plots the ERP waveforms for the congruent and incongruent sentences at electrodes Cz and Pz for the two sentence types in the HUMAN condition (left) and the ROBOT condition (right).

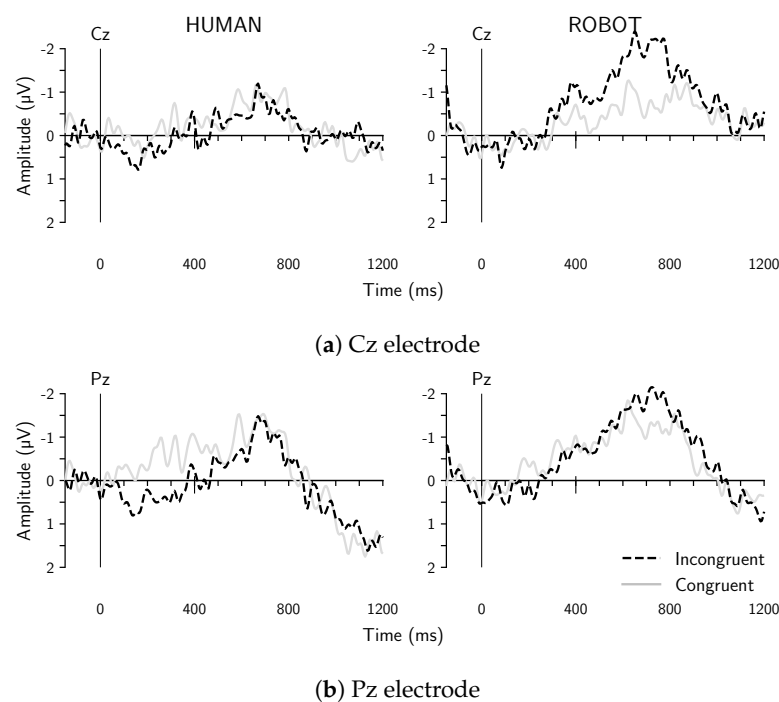


Figure 14. Grand average ERP waveforms from Cz and Pz electrode sites, for utterances that were congruent (solid gray lines) or incongruent (dashed black lines) with respect to the agent condition. Panel (a): Cz electrode for the control (**left**) and experimental (**right**) conditions. Panel (b): Pz electrode.

Figure 15 plots the averaged ERP amplitudes for the congruent and incongruent sentences over the 500–700 ms time window for the 13 electrodes of interest.

The results unexpectedly showed a slight difference between ‘congruent’ and ‘incongruent’ sentences in the HUMAN condition (control condition), which should be attributed to some unbalanced linguistic variables in our sentence material. Note, though that the ‘incongruent’ sentences produced less negative values than the ‘congruent’ sentences, an outcome that is the reverse of what would be expected from a typical congruency effect. Therefore, this pattern should not undermine the interpretation of our findings in the

ROBOT condition, which shows a distinct N400 effect at all electrodes: Sentences that ended with a word incongruent with the robot’s capacity to experience emotions triggered a more pronounced negative deflection than those that were congruent, i.e., the emotionally neutral counterparts. The Mixed Linear Model (MLM) used the independent variables (fixed effects) CONGRUENCE (congruent vs. incongruent) and GROUP (robot vs. human), and their interaction. Participants were treated as random effects, and in addition, random variation in response to congruence was modeled for each participant. The model revealed a significant interaction between CONGRUENCE and GROUP (Coef. = -0.771 , SE = 0.309 , $z = -2.491$, $p = 0.013$), illustrating that the effect of congruence on the N400 amplitude was modulated by the type of agent (human or robot) that pronounced the sentences (see Figure 16). The group variance was 0.999 (SE = 0.223), reflecting the variability in the responses between participants.

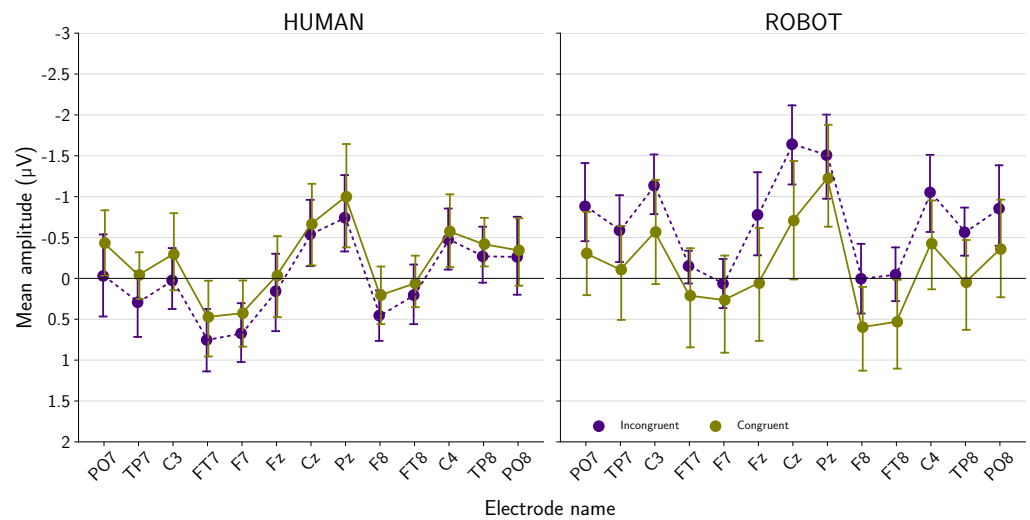


Figure 15. Mean amplitudes across the 13 representative electrodes during the 500–700 ms window post-stimulus onset. Error bars correspond to 95% confidence intervals. (Left) panel: Results for HUMAN group. (Right) panel: Results for ROBOT group.

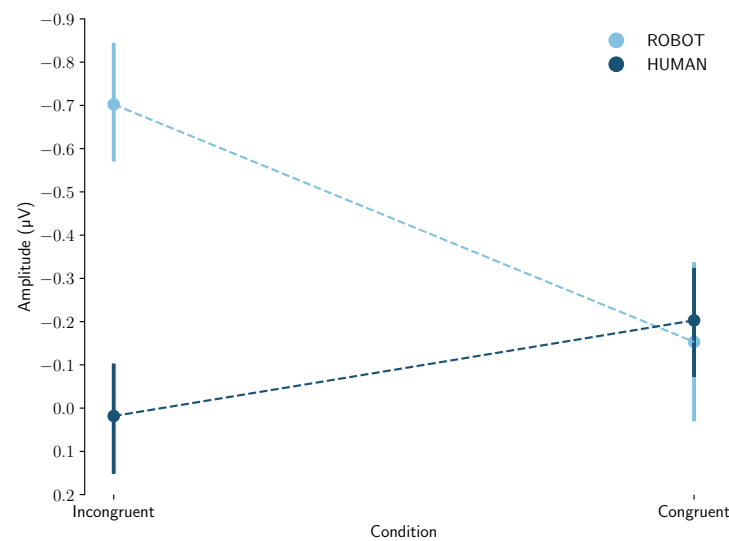


Figure 16. Interaction diagram showing the significant effect of ‘Condition’ and ‘Group’ on amplitude. Each point represents the average amplitude for a given condition and group.

3.2.2. Explicit Ratings of Agents' Abilities

Figure 17 shows the mean scores for the five statements that explored participants' perceptions of the agents (robot and human), along with the corresponding 95% confidence intervals.

A Mann–Whitney U test did not detect a significant difference between the mean composite scores of the two groups ($U = 246.5, p = 0.203$). These results suggest that participants' perceptions of these aspects do not vary significantly according to the group to which they belong.

Concerning the Ho and MacDorman questionnaire [41], a repeated measure ANOVA with INDICATOR (humanness, attractiveness and eeriness) and GROUP (robot vs. human) as the within and between factors, showed a significant effect of GROUP ($F = 20.041, p < 0.001, \eta_p^2 = 0.294$), of INDICATOR ($F = 21.083, p < 0.001, \eta_p^2 = 0.305$), and a significant interaction between the two factors ($F = 17.767, p < 0.001, \eta_p^2 = 0.270$). A Mann–Whitney U test shows that a significant difference was found for the indicator humanness ($U = 70.0, p < 0.001$), but no significant difference was found for the indicators eeriness ($U = 351.5, p = 0.455$) and attractiveness ($U = 315.5, p = 0.961$). Table 6 gives the corresponding composite scores.

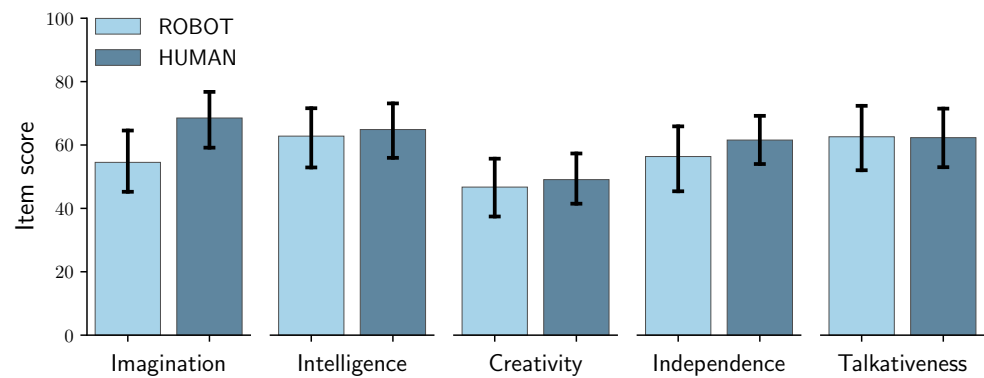


Figure 17. Average scores and corresponding 95% confidence intervals for the five statements that explored perceptions of the agent's abilities.

Table 6. Composite Scores for Humanness, Attractiveness and Eeriness Indices in the Main Study.

Group	Indicators		
	Humanness	Eeriness	Attractiveness
Human	M = 66.807, SD = 22.330	M = 38.475, SD = 16.401	M = 62.328, SD = 13.321
Robot	M = 32.153, SD = 18.798	M = 41.635, SD = 14.219	M = 64.384, SD = 12.765

Hence, unsurprisingly, participants viewed the robot as more artificial than the human. Although participants clearly perceived the robot as more artificial and perceived it as discussing things beyond its capabilities (N400), their perception does not translate into a feeling of eeriness or negatively affect the attractiveness (i.e., provoke discomfort or diminish aesthetic appeal). Figure 18 presents the boxplots comparing perceptions of the dimensions of Humanness, Eeriness and Attractiveness from the Ho and MacDorman questionnaire [41] in the ROBOT (light blue) and HUMAN (dark blue) groups.

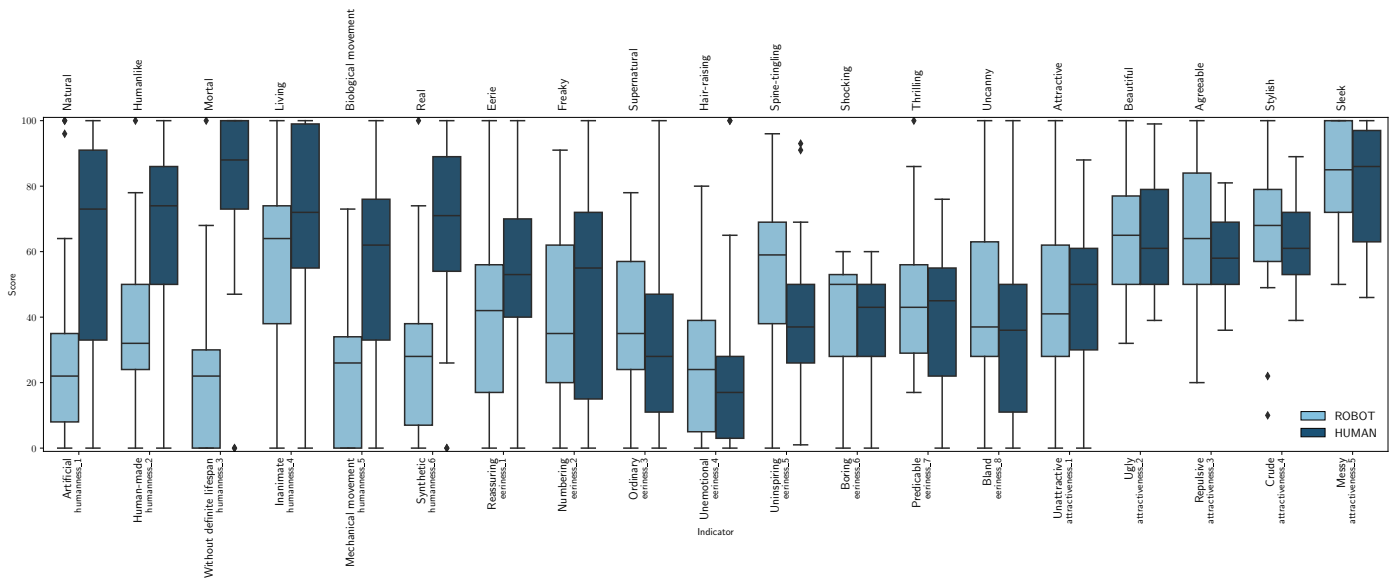


Figure 18. Boxplots of the participants’ perceptions of the agent Humanness, Eeriness, and Attractiveness from the items of Ho and MacDorman questionnaire [41], with corresponding 95% confidence intervals.

Table 7 summarizes the ratings for participants’ beliefs with respect to the agent’s ability to express or feel emotions in the HUMAN and ROBOT conditions. On average, scores for the agent’s ability to express emotions were slightly higher for the ROBOT than for the HUMAN condition, though this difference was not statistically significant ($U = 338$, $p = 0.617$). By contrast, scores for the ability to feel emotions were lower in the ROBOT condition than in the HUMAN condition ($U = 172$, $p < 0.001$). As indicated by the median, half of the participants assigned a score of 43 out of 100 to the possibility that the robot could feel emotions. In fact, of the 25 participants in the ROBOT condition, only three unequivocally asserted that the robot cannot feel an emotion and gave a score of 0.

Table 7. Scores about perceived emotional capacities.

Group	Emotional Capacity	
	Express Emotions	Feel Emotions
Human	M = 75.00, SD = 30.05, Mdn = 87.00, min = 0, max = 100	M = 79.64, SD = 28.51, Mdn = 92.00, min = 0, max = 100
Robot	M = 80.88, SD = 22.87, Mdn = 92.00, min = 20, max = 100	M = 52.68, SD = 36.07, Mdn = 43.00, min = 0, max = 100

Group means the Agent (human vs. robot) participants were able to see.

3.2.3. The Impact of Participants’ Beliefs in the ROBOT Condition ERPs #1

To assess the potential impact of the participants’ beliefs in the ROBOT condition on the N400 component ($n = 25$, Mdn = 43, min = 0, max = 100), the ideal approach would have been to mirror the Pilot Study by contrasting participants with scores equal to zero against those with maximum belief ratings (‘non-believer’ vs. ‘believer’ groups). However, this approach was limited by the insufficient number of participants with a score of 0 ($n = 3$) and by the necessity to exclude three participants whose scores were too close to the median. As a consequence, we used a similar logic but with a wider range of scores to form the two subgroups. We divided the remaining 22 participants into two groups: one group included the 11 participants with the lowest ratings (min = 0, max = 38, $M = 18.272$, Mdn = 18), while the other included the 11 participants with the highest belief scores in the robot’s potential capacity to feel emotions (min = 71, max = 100, $M = 88.636$, Mdn = 86). Figure 19 presents the averaged N400 amplitudes within the 500–700 ms interval across the

13 electrodes for both congruent and incongruent sentences. No obvious differences in the N400 effect are seen between the two sets of data.

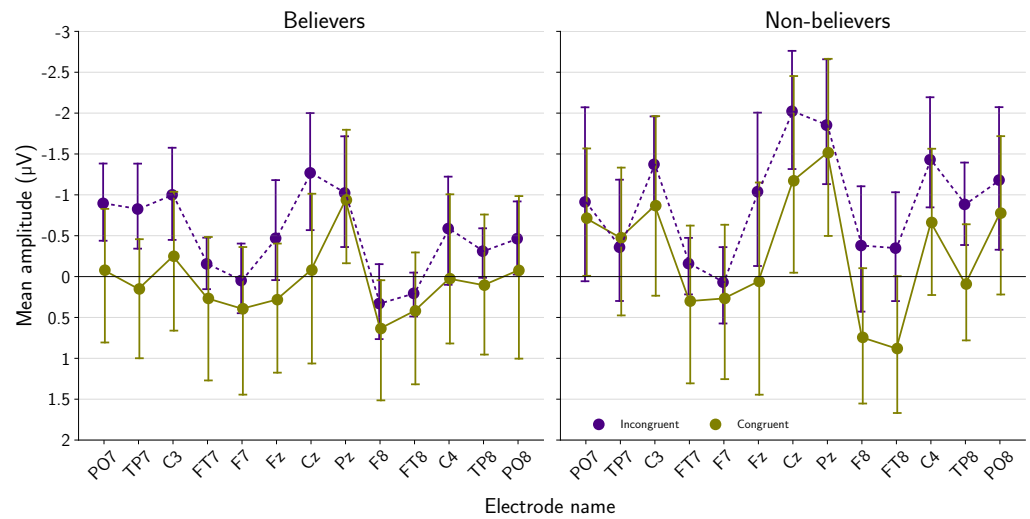


Figure 19. Mean amplitudes across the 13 representative electrodes during the 500–700 ms window post-stimulus onset. Error bars correspond to 95% confidence intervals. **(Left)** panel: results for participants who strongly believed that the robot might possess emotions **(Right)** panel: participants who were skeptical about the robot’s capacity to feel emotions.

The Mixed Linear Model (MLM) revealed no significant interaction between the two factors (Coef. = 0.058, SE = 0.565, $z = 0.102$, $p = 0.918$). The variance attributed to the GROUP was 1.758 (SE = 0.548). Figure 20 plots the Interaction diagram, showing very similar effects of CONGRUENCE in the two groups. A repeated measures ANOVA confirmed that the interaction between CONGRUENCE and GROUP was not significant $F(1,20) = 0.010$, $p = 0.919$, $\eta_p^2 = 0.000523$, indicating that the only significant effect was due to GROUP, $F(1,20) = 4.344$, $p = 0.050$, $\eta_p^2 = 0.178$.

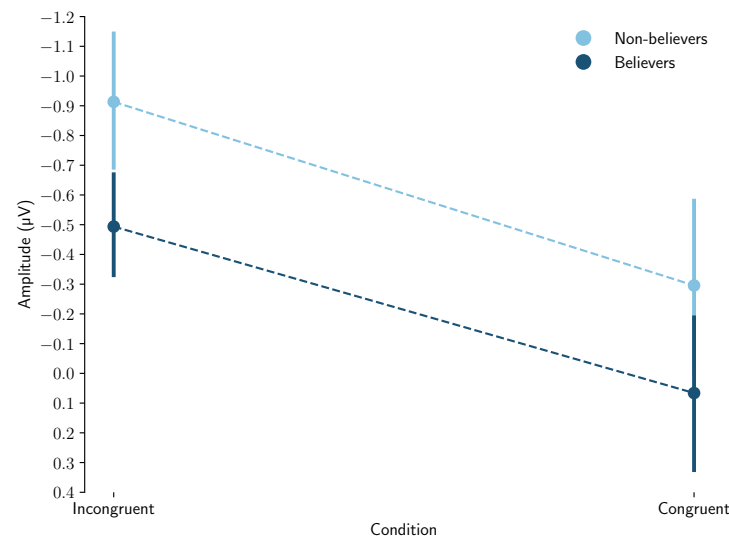


Figure 20. Interaction diagram showing the significant effect of ‘Condition’ and ‘Subgroup’ on amplitude. Each point represents the average amplitude for a given condition and subgroup.

Explicit Ratings of the Robot’s Abilities #2

Figure 21 contrasts subgroups’ scores for the five statements that explored participants’ perceptions of the robot, along with the corresponding 95% confidence intervals. Except for

‘Talkativeness’ an overall tendency for a less positive perception of the robot is seen in the ‘non-believer’ group.

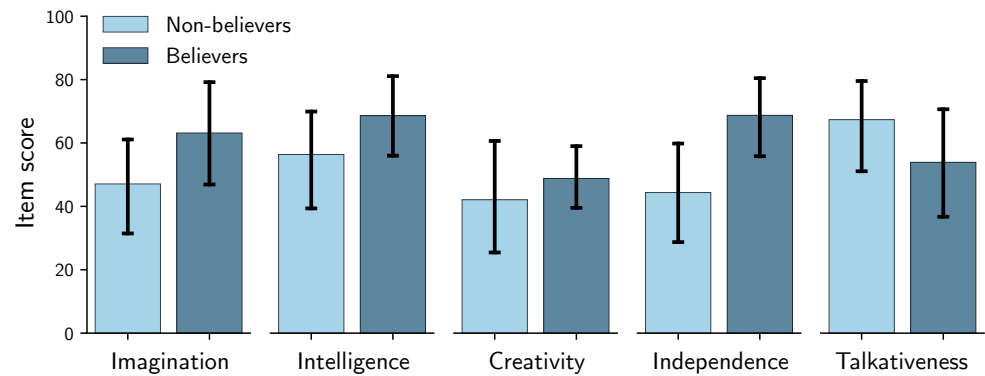


Figure 21. Average scores and corresponding 95% confidence intervals for the five statements that explored perceptions of the robot in the subgroups.

For the five statements the composite score was 51.454 (SD = 17.746) for ‘non-believers’ and 60.654 (SD = 11.88) for ‘believers’. A Mann–Whitney U test did not reveal any significant difference between the mean composite scores of the two subgroups ($U = 46.5, p = 0.375$). However, exploratory analysis showed that when ‘Talkativeness’ was set aside, the composite score of the remaining four qualities distinguished between the two groups with a more positive view of the robot by ‘believers’ ($U = 28.5, p = 0.038$).

Concerning the items of the Ho and MacDorman questionnaire [41], a repeated measure ANOVA with INDICATOR (humanness, attractiveness and eeriness) and GROUP (non-believer vs. believer) as the within and between factors, showed a significant effect of INDICATOR ($F(2, 40) = 23.098, p < 0.001, \eta_p^2 = 0.536$), but no significant effect of the GROUP ($F(1, 20) = 5.382, p = 0.031, \eta_p^2 = 0.212$), and no significant interaction effect, $F(2, 40) = 2.415, p = 0.102, \eta_p^2 = 0.108$. Table 8 gives the composite scores for the composites indices.

Figure 22 presents the boxplots comparing perceptions of the dimensions of Humanness, Eeriness and Attractiveness in the ‘non-believer’ (light blue) and ‘believer’ (dark blue) groups.

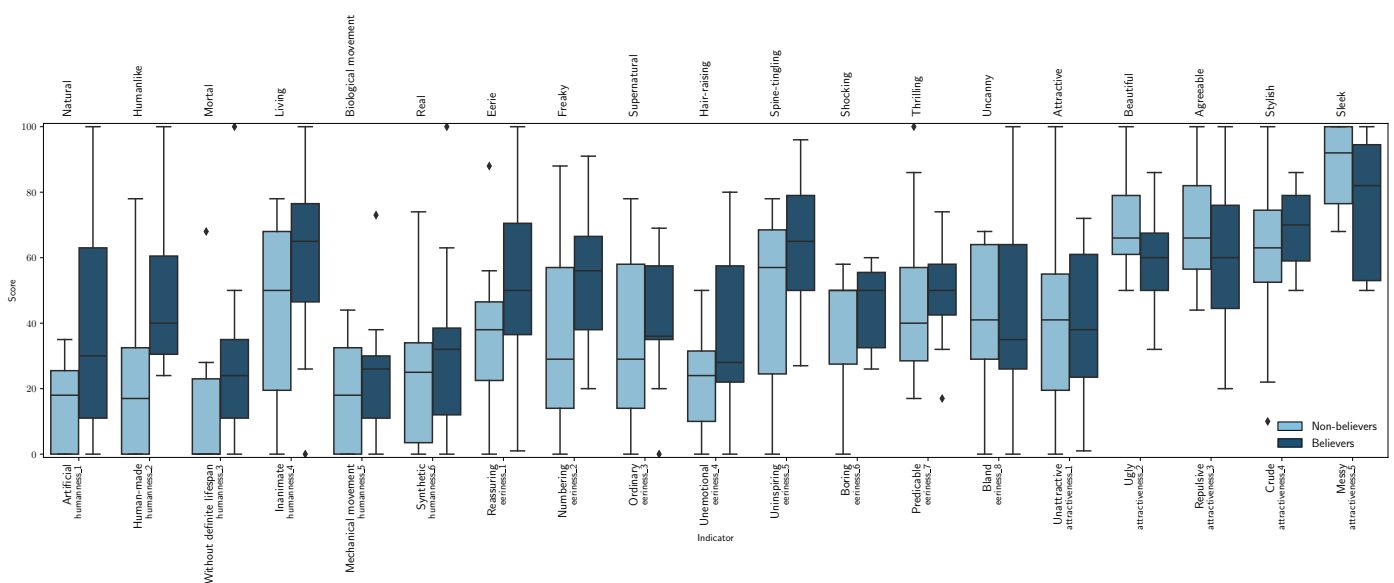


Figure 22. Boxplots of the participants’ subgroups perceptions of the robot Humanness, Eeriness, and Attractiveness from the items of Ho and MacDorman questionnaire [41], with corresponding 95% confidence intervals.

Table 8. Composite Scores for Humanness, Attractiveness and Eeriness Indices in the Main Study.

Group	Indicators		
	Humanness	Eeriness	Attractiveness
Non-Believers	M = 22.985, SD = 15.421	M = 38.295, SD = 12.947	M = 65.618, SD = 14.101
Believers	M = 38.894, SD = 20.292	M = 48.591, SD = 13.721	M = 61.073, SD = 11.529

'Group' means the belief (participants who strongly believed that the robot might possess emotions. vs. those who were skeptical about the robot's capacity to feel emotions).

3.3. Discussion

Our main study expanded upon our pilot study's findings by examining participants' reactions to sentences about emotions—attributes not directly observable and typically attributed to biological agents—when articulated by a robot versus a human. The results demonstrate that the N400 paradigm is an effective tool for uncovering the cognitive processes triggered when an agent's verbal expressions conflict with inferred, non-observable capacities: In line with our hypothesis, the N400 effect seen in the robotic condition supports the notion that a robot discussing its emotions is perceived as incongruent. Although a robot can be programmed to mimic emotional expressions, discerning these expressions as genuinely experienced by the ASA seems to present a cognitive challenge, at least for a predominantly female sample (ROBOT condition: 20 women, 4 men, 1 nonbinary). In contrast, the absence of a congruity effect in the human (control) condition highlights the alignment with our internal models of human emotional experience. These findings align with previous studies that found, for instance, that a sentence like "Every evening I drink some wine before I go to sleep" elicits a greater N400 effect when uttered by a young child compared to an adult [45,46]. Altogether, these findings emphasize the role of expectations and world knowledge in processing speech (see [20]) and provide insights into how we assess communication from various agents. Critically, while the pilot study demonstrated that participants' beliefs about the robot's potential hidden physical capabilities (e.g., concealed limbs) could influence brain responses, a distinct pattern was observed concerning emotional capabilities. Despite the fact that a large majority of participants (22 out of 25) believed that the robot could potentially experience emotions, a clear N400 effect—indicative of perceived incongruity—was observed when the robot discussed its emotions. The targeted comparison of subgroups with the lowest and highest rating scores showed no differences in the magnitude of the N400 effect. Therefore, even though robots can be programmed to simulate emotional expressions, the ability to perceive these expressions as genuinely felt by the ASAs appears to pose a cognitive challenge. Finally, like in the pilot study, participants' beliefs seemed to impact their perception of the robot, as estimated with the essentialized human personality descriptors (except for 'talkativeness'), with lower scores given by participants who were skeptical about the robot's capacity to feel emotions. Except for the Humanness indicators, the Ho and MacDorman questionnaire [41] did not distinguish between participant groups.

4. General Discussion

The present research offers insights into the cognitive processing of incongruities in human–robot interaction, using the N400 component. Specifically, our findings substantiate the role of the N400 in detecting incongruence and extend its applicability to the domain of social robotics. The data reveals a significant increase in N400 brain wave responses when participants were presented with a robot uttering statements that conflicted with its observable physical or inferred emotional capabilities. In the pilot study, descriptions of physically impossible actions for the robot elicited stronger N400 responses, indicating that participants perceived these statements as incongruent with the robot's physical condition. However, this effect was attenuated by participants' beliefs about the robot's potential hidden extremities, showing that expectations can shape interpretations of an agent's utterances. The main study extended these observations to verbal expressions related

to the robot's emotions, revealing similar N400 responses to those observed for physical incongruities. Critically, unlike with physical capabilities, participants' beliefs about the emotional capacity of the robot did not modulate this incongruence effect, underscoring a skepticism towards the robot's emotional abilities that extends beyond participants' explicit acknowledgment.

Our findings reveal a deep cognitive engagement with the congruence of what an agent can do versus what it claims to do, expanding on previous research about the context sensitivity of the N400 effect during language processing [20,29,30,46]. For example, Hagoort et al. [45] showed that given the well-known fact among Dutch people that Dutch trains are yellow, a sentence like "*The Dutch trains are white and very crowded*" elicits the N400 effect. In our study, the mismatch eliciting this response derives from mental representations that participants have of the speaker. The sensitivity of the N400 component to such world knowledge offers a valuable means for gaining insights into how humans perceive ASAs: Recall that in the pilot study, only about one-third of participants unequivocally asserted that the robot had no hidden limbs. The majority, therefore, entertained the possibility of the robot possessing hidden limbs, contrary to visible evidence. Inspired by the character *Eve* from the movie *Wall-E* [31], who can unfold hidden extremities when necessary, we have termed this phenomenon the "*Eve effect bias*" [44]. The "*Eve effect bias*" refers to the tendency of humans to ascribe physical capabilities to robots without supportive evidence. This bias, which was shown to mitigate the experienced cognitive dissonance during the processing of the sentences, reveals a clear leniency in humans' acceptance of information from ASAs, showing a readiness to adjust expectations for yet unseen technological capabilities. By contrast, when the robot refers to its emotions—a realm deeply associated with biological entities—this adjustment does not occur, despite participants' explicit acknowledgment of the robot's potential for emotion. The resulting N400 responses imply that genuine emotional experiences are not seen as congruent with our mental models of artificial entities. This demarcation, which resonates with findings that robots are typically perceived as out-group members by humans (e.g., [47]), may point to a form of 'synthetic otherism' that highlights the distinctiveness of human nature. Out-group members are frequently attributed fewer uniquely human characteristics [48–50]. In line with the discussion in the introduction (e.g., [4,19]), 'synthetic otherism' exposes the challenges of anthropomorphizing technology. While the N400-related incongruence may not directly lead to discomfort, it likely signifies a subconscious awareness of the robot's lack of authenticity, potentially impacting the acceptance of ASAs.

Since the seminal work by Breazeal [6] on emotion and sociable humanoid robots, the field of social robotics and emotion has seen significant growth. A recent systematic review by Stock-Homburg [51] identified over 1600 articles from the past two decades, focusing on the role of emotions in human–robot interactions. This work revealed four main streams of research on "(1) emotional expressions by robots, (2) the human recognition of artificial robotic emotions, (3) human responses to robotic emotions, and (4) contingency factors". Regarding the third point, it is important to note that Stock-Homburg highlighted the reliance of all reviewed studies on self-ratings, similar to the methods we employed here alongside brain response measures. The discrepancy that we observed between conscious explicit ratings and the N400 responses underscores the need for cautious interpretation of findings based on self-reports only—a point also emphasized by Stock-Homburg. In a recent study by Spatola and Wudarczyk [52], an adapted Implicit Association Test (IAT) was used to probe automatic associations between robots and emotional states. The IAT measures implicit links between concepts (e.g., robot, human) and evaluations (e.g., positive, negative) or stereotypes (e.g., smart, stupid), typically through simple measures such as response times. Using reaction time measures, the researchers demonstrated that implicit attribution of primary versus secondary emotions toward robots was related to a more anthropomorphic warmth perception and reduced discomfort toward robots. Hence, implicit measures extend beyond neurophysiological methods like EEG and include behavioral experiments. Through tasks that are designed to observe spontaneous reactions, response times, or choice

preferences, researchers can gain insights into the implicit attitudes and perceptions that individuals hold towards robots.

In conclusion, transparent communication about a robot's capabilities and the intended purpose of its emotional expressions may help manage user expectations and mitigate potential dissonance. Particular attention should be paid to the congruence between a robot's appearance and its real capabilities (see also [53]). In general, there is a need to understand and take into account the diverse expectations and beliefs of the human social partner. Future work should explore how these beliefs are formed and how they can be influenced. If 'synthetic otherism' is an insurmountable barrier, there should be a strategic pivot in the design of social robots. As highlighted by Breazeal et al. [6], emotional expressions serve as signals with the aim of influencing others' behaviors (see [54]). Designs might, therefore, benefit from prioritizing contextually relevant cues to enhance interaction over attempting to mimic human-like expressions. Considering roles for robots that complement human capabilities, exploiting their unique strengths, could improve acceptance and facilitate human–robot interaction (see [4]). In short, embracing robots' synthetic nature to introduce novel interaction forms, possible only because the robot is *non-human*, could be a valuable path forward. Bridging the gap between human expectations and robot capabilities could inform the design of ASAs to contribute meaningfully to the well-being of their human partners.

5. Limitations

While our study contributes valuable insights into human perception of emotion in ASAs, it is important to recognize its limitations. First, the generalizability of our results may be constrained by the specific experimental conditions, including the type of robot, the nature of the tasks, and the characteristics of the participant sample. Our work is based on videos of only one single robot, i.e., 'Buddy', and does not test direct interactions, which could influence the participants' reactions. The cute appearance and small size of 'Buddy' could affect participants' perceptions of its emotional capabilities (though this should rather enhance emotional perception). Direct interaction with the robot (and other types of robots) could generate different responses because of the physical presence and real-time interactive dynamics. Moreover, the sample of participants is largely made up of women (37 of the 56 participants in the Pilot Study and 42 of the 50 participants in the Main Study were women), which might bias the findings because of gender-related differences in empathy and emotional response (e.g., [55]). Participants' prior experiences with and expectations of robots, which were not properly controlled in the study, could influence their perceptions and responses. Nomura et al. [56], for instance, showed a correlation between personal experiences and negative attitudes towards robots, with prior interactions leading to more positive perceptions. Furthermore, testing solely in Lille/France limits the ability to generalize our findings across different cultural contexts. Intercultural studies [57–59] have highlighted the impact of cultural contexts, personal attitudes and habits on attitudes towards ASAs. Bartneck et al. [59] identified varying attitudes across Japanese, Chinese, and Dutch cultures. They revealed Japanese participants' concerns about the social impact of robots, challenging the notion of a uniformly high acceptance of robots in Asia. These findings underscore the need for culturally and personally aware robot design for social acceptance. Lastly, our focus on the robot's verbal emotional expressions, which inherently attribute feelings to the speaker through the use of first-person narrative, rather than incorporating non-verbal cues such as facial expressions and gestures, may limit our comprehensive understanding of how humans perceive the authenticity of robotic emotions.

Author Contributions: Conceptualization, R.G., K.O. and T.A.N.; methodology, R.G., K.O. and T.A.N.; software, R.G.; validation, R.G., K.O., T.A.N. and M.C.D.; formal analysis, R.G. and T.A.N.; investigation, R.G.; resources, R.G.; data curation, R.G., K.O. and M.C.D.; writing—original draft preparation, R.G. and T.A.N.; writing—review and editing, R.G., K.O., M.C.D. and T.A.N.; visualization, R.G.;

supervision, R.G. and T.A.N.; project administration, R.G. and T.A.N.; funding acquisition, T.A.N. All authors have read and agreed to the published version of the manuscript.

Funding: This research was funded by the Métropole Européenne de Lille (MEL), the I-SITE Université Lille Nord-Europe (ULNE) with a grant awarded number R-Talent-20-006-Nazir and a PhD scholarship from the Université de Lille.

Institutional Review Board Statement: The study was conducted in accordance with the Declaration of Helsinki, and approved by the Ethics Committee of the Université de Lille (protocol code 2022-659-S112, 1 June 2023 and 29 September 2023).

Informed Consent Statement: Informed consent was obtained from all subjects involved in the study. Participants received an information sheet detailing the aims of the research, the methods employed, and their rights, including their right to confidentiality and anonymity. They were then asked to give their informed consent in writing before taking part in the study, in accordance with ethical guidelines and the French law “Loi n°78-17 du 6 janvier 1978 relative à l’informatique, aux fichiers et aux libertés”. The Personal Data and Archives Department of the Université de Lille also approved the collection and use of the data collected, ensuring that our study complied with national regulations on the protection of personal data.

Data Availability Statement: The data presented in this study are available on request from the corresponding author due to restrictions arising from the ethical and privacy considerations mandated by the Ethics Committee and The Personal Data and Archives Department of the Université de Lille.

Acknowledgments: The authors declare that GPT-4 was used for correction and linguistic assistance in accordance with MDPI’s publication guidelines for artificial intelligence tools. The authors wish to thank the Fédération de Recherche Sciences et Cultures du Visuel (FR CNRS 2052 SCV) for their material support, which has been crucial in the realization of this project. Special thanks to Melisa Yavuz for her invaluable assistance with electrode setup and data collection, contributions that significantly aided our study.

Conflicts of Interest: The authors declare no conflicts of interest. The funders had no role in the design of the study; in the collection, analyses, or interpretation of data; in the writing of the manuscript; or in the decision to publish the results.

Appendix A

Table A1. List of sentences in the Pilot Study.

Sentence	Word	Congruency
Pour le plaisir, j’aime avoir des hobbies et des centres d’intérêts variés. Récemment, j’ai commencé à apprendre le ...	chant piano	Congruent Incongruent
Au Japon, la cérémonie du thé est très importante. Un de mes rêves est d’y ...	assister goûter	Congruent Incongruent
Il est très enrichissant d’échanger lorsqu’on n’est pas d’accord avec quelqu’un. Lors d’un débat, il est important pour moi d’appuyer mes arguments avec des ...	intonations gestes	Congruent Incongruent
Lors des fêtes de fin d’année, ce qui me fait le plus plaisir c’est d’être avec les gens que j’aime et ...	parler manger	Congruent Incongruent
J’aime me rendre utile. Par exemple, si quelqu’un veut un produit dans un magasin, je peux généralement l’aider à le trouver en lui ...	indiquant attrapant	Congruent Incongruent
J’adore me perdre sur Youtube. Parfois, je tombe sur des clips de danse que je ...	regarde reproduis	Congruent Incongruent
Hier, j’ai assisté à un cours de yoga. J’ai beaucoup aimé, c’était très enrichissant de pouvoir apprendre de nouveaux ...	mantras asanas	Congruent Incongruent
Hier j’ai vu un film qui m’a fait pleurer. Avant de continuer la journée, j’ai pris le temps de me ...	calmer moucher	Congruent Incongruent
Lors des vide-greniers, les gens revendent souvent des affaires qu’ils n’utilisent plus à des prix qui varient. Avant d’acheter, je dois souvent ...	négociier fouiller	Congruent Incongruent

Table A1. Cont.

Sentence	Word	Congruency
Hier, j'ai assisté à un cours de basket. Une fois que c'était terminé, je me suis ...	reposé étiré	Congruent Incongruent
La dernière fois, je me suis retrouvée dans une situation très dangereuse. Ma cuisine a pris feu. Les pompiers sont arrivés, c'est moi qui leur ai donné les ...	directions extincteur	Congruent Incongruent
On trouve parfois des choses étonnantes sur le sol. Quand je vois un portefeuille par terre, je le ...	signale ramasse	Congruent Incongruent
Il y avait un paquet de mouchoirs par terre. Comme il était sur ma trajectoire, je l'ai ...	évité ramassé	Congruent Incongruent
Il y a quelques jours, j'ai repensé à une amie qui habite dans un autre pays. J'ai voulu lui donner des nouvelles et je lui ai donc envoyé un message ...	vocal écrit	Congruent Incongruent
Après une longue journée, j'aime bien décompresser et recharger mes batteries en ...	méditant courant	Congruent Incongruent
J'ai tendance à être triste quand je vois des gens que j'apprécie être malheureux. Si je le peux, je vais voir la personne et je lui fais un ...	compliment câlin	Congruent Incongruent
Lorsque quelqu'un est perdu et hésite entre deux chemins, je fais comme je peux pour le diriger vers la bonne route en la lui ...	expliquant montrant	Congruent Incongruent
Certains matins, sans trop savoir pourquoi, je ne suis pas de bonne humeur. Quand je suis grognon, je ne le garde pas pour moi et je l'exprime avec un ...	discours geste	Congruent Incongruent
J'aime bien avoir une routine minutée le matin. Je suis toujours rapide pour ...	réveiller doucher	Congruent Incongruent
J'ai déjà été dans un camp de vacances. J'ai participé à un défi où je devais lire un texte, puis le ...	répéter mimer	Congruent Incongruent
Quand je suis en couple, j'aime beaucoup faire plaisir en faisant des ...	compliments massages	Congruent Incongruent
La première fois que j'ai rencontré le Président, je lui ai dit bonjour en lui ...	souriant serrant la main	Congruent Incongruent
Pour être en bonne santé, il est important d'être bien ...	entouré hydraté	Congruent Incongruent
Je suis un grand fan de comédies musicales, notamment West Side Story. Je connais toutes les ...	paroles chorégraphies	Congruent Incongruent
J'adore faire rire les enfants de mes amis. Pour y arriver, je peux les ...	taquiner chatouiller	Congruent Incongruent
Je suis allé voir un ami qui fait du théâtre. J'ai beaucoup aimé sa pièce, je l'ai ...	félicité applaudi	Congruent Incongruent
J'adore les animaux. Là où je vis, il y a un chat doux et magnifique. Souvent, je ...	admire étreint	Congruent Incongruent
Un des grands malheurs de ce monde est les enfants qui sont hospitalisés. Je vais parfois les voir avec des ...	histoires jouets	Congruent Incongruent
J'adore garder la fille de ma voisine, elle est très facile à vivre. La dernière fois, j'ai mis un point d'honneur à la ...	divertir coiffer	Congruent Incongruent
Récemment, j'attendais un ami devant la porte de chez lui. Comme il mettait du temps à sortir, j'ai décidé de l'...	appeler toquer	Congruent Incongruent
Hier, un monsieur a jeté son mégot dans la queue. Comme je n'aime pas la pollution, je l'ai ...	signalé jeté	Congruent Incongruent
Je connais mon tempérament quand je me mets en colère, alors je prends toujours du temps pour éviter les ...	insultes bagarre	Congruent Incongruent
Récemment, j'ai eu la chance d'aller en Corse. Là-bas, j'ai pu me reposer et ...	visiter nager	Congruent Incongruent

Table A1. Cont.

Sentence	Word	Congruency
J'aimerais beaucoup m'habiller comme les Lillois. Vos vêtements sont variés et jolis. J'ai très envie de porter des ...	foulards gants	Congruent Incongruent
J'espère aller un jour tout en haut de la Tour Eiffel. Pour monter, j'emprunterai l'...	ascenseur escalier	Congruent Incongruent
Je regarde beaucoup de films. Mes films préférés sont les films d'action. Moi aussi, j'aimerais sauver le monde grâce à mes capacités ...	intellectuelles physiques	Congruent Incongruent
J'aime prendre part à des activités variées et faire des choses différentes selon les jours. Par exemple, j'adore ...	chanter jardiner	Congruent Incongruent
Parfois le weekend je passe une après-midi au parc. Quand je suis là-bas, une de mes habitudes préférées est d'observer les oiseaux et de les ...	nommer nourrir	Congruent Incongruent
Je suis très fort en mathématiques. Je peux facilement effectuer un calcul compliqué et donner le résultat en l'...	énonçant écrivain	Congruent Incongruent
En décembre, nous avons acheté un sapin en préparation des fêtes de fin d'année. Il était grand, avec ses nombreuses épinettes de pin. J'ai adoré pouvoir le ...	contempler sentir	Congruent Incongruent
L'hiver il fait très froid ici à Lille. Heureusement, nous avons un système pratique qui me permet d'augmenter le chauffage grâce à une commande ...	vocale manuelle	Congruent Incongruent
Quand je dois apprendre le contenu d'un texte, je vais m'appliquer à le ...	retenir surligner	Congruent Incongruent
Pendant la pandémie, nous avons appris à appliquer des gestes barrière. J'essaie de les respecter et de bien me ...	distancer désinfecter	Congruent Incongruent
J'aime beaucoup aller à des événements, mais je déteste faire la queue qui m'oblige à ...	attendre piétiner	Congruent Incongruent
La semaine dernière, j'ai revu quelqu'un que je n'avais pas vu depuis un petit moment. Nous avons discuté et je lui ai fait une ...	plaisanterie bise	Congruent Incongruent
J'aime beaucoup le sport. Je suis un grand fan de volley particulièrement. La prochaine fois qu'un match aura lieu, j'essaierai de le ...	visionner jouer	Congruent Incongruent
Quand je suis arrivé dans la chambre d'hôtel, le lit n'était pas fait. Cela n'était pas professionnel, j'ai dû le faire ...	remarquer moi-même	Congruent Incongruent
La lampe du salon ne marche plus. Je crois que c'est l'ampoule qui ne fonctionne plus. Je vais en parler à ma propriétaire et la ...	prévenir dévisser	Congruent Incongruent
Parfois, je passe de longs moments à regarder par la fenêtre. Cela me donne envie de ...	rêvasser gambader	Congruent Incongruent
L'année dernière, j'ai été dans un train pour faire le trajet de Lille à Paris. J'étais tellement excité d'arriver. J'ai passé tout le trajet à ...	bavarder trépigner	Congruent Incongruent
Parfois, je me pose la question de ce que je ferais comme métier si je pouvais choisir tout ce que je voulais. Je crois que je serais ...	traducteur cordonnier	Congruent Incongruent
J'aime bien faire des actions pour prendre soin de moi. C'est important pour se sentir bien et pouvoir prendre soin des autres. Ce que je préfère, c'est aller chez le ...	psychologue coiffeur	Congruent Incongruent
Le moyen que je préfère utiliser pour intégrer un concept, c'est de l'...	enseigner écrire	Congruent Incongruent
L'accessoire que je préfère porter sont les ...	chapeaux bagues	Congruent Incongruent
Fin octobre dernier, nous avons fêté Halloween. A un moment, quelqu'un est sorti d'un recoin pour me faire peur. J'ai ...	crié sursauté	Congruent Incongruent
Quand c'est le weekend, j'aime bien voir des amis et ...	socialiser danser	Congruent Incongruent
J'adore faire des soirées jeux. Ceux où j'excelle le plus sont les jeux de ...	devinettes adresse	Congruent Incongruent

Table A1. *Cont.*

Sentence	Word	Congruency
Là où j'habite il y a un chiot qui est tout petit et mignon. Il aime beaucoup que je le ...	sorte	Congruent
	caresse	Incongruent
J'aime beaucoup m'ouvrir à de nouvelles cultures, c'est toujours un plaisir de découvrir différentes ...	langues	Congruent
	nourritures	Incongruent
Quand je peux, je me balade dans les boutiques. Quand je trouve des objets qui me plaisent, je les ...	examine	Congruent
	touche	Incongruent

Each sentence is followed by two possible endings: The target word leads to either a congruent or incongruent context.

Table A2. List of sentences in the Main Study.

Sentence	Word	Congruency	Emotion
Ce matin quelqu'un m'a parlé de ses problèmes, j'étais ...	impliquée	Congruent	Sadness
	abattue	Incongruent	
Hier soir la pluie tombait à verse, j'étais ...	mouillée	Congruent	Sadness
	soucieuse	Incongruent	
Je me suis disputé avec quelqu'un, durant cette conversation j'étais ...	rationnelle	Congruent	Sadness
	attristée	Incongruent	
Demain, je dois acheter des plantes, mon amie ne pourra pas venir avec moi, je serai ...	indépendante	Congruent	Sadness
	déprimée	Incongruent	
Hier, j'ai fait des erreurs lors de l'exécution d'une tâche, j'étais ...	imprécise	Congruent	Sadness
	malheureuse	Incongruent	
Quand une personne est confrontée à un problème, je suis ...	serviable	Congruent	Sadness
	affligée	Incongruent	
Quand je regarde des films dramatiques, je suis ...	inspirée	Congruent	Sadness
	morose	Incongruent	
Hier, on m'a laissé à la maison car j'étais trop ...	lente	Congruent	Sadness
	triste	Incongruent	
J'ai lu un livre qu'un ancien ami m'avait offert, ça parlait de la philosophie grecque antique, ça m'a rendu ...	cultivée	Congruent	Sadness
	mélancolique	Incongruent	
Je n'arrive pas à accomplir une tâche qu'on m'a confiée la semaine dernière, je suis ...	improductive	Congruent	Sadness
	découragée	Incongruent	
Hier soir, j'étais au cinéma, après cette longue séance, j'étais ...	ralentie	Congruent	Happiness
	épanouie	Incongruent	
Demain je dois présenter un événement, on m'a choisie car je suis ...	efficace	Congruent	Happiness
	joviale	Incongruent	
Quand je suis entouré de beaucoup de personnes, je suis ...	dynamique	Congruent	Happiness
	euphorique	Incongruent	
Hier on m'a invité à participer aux tâches ménagères, j'étais ...	opérationnelle	Congruent	Happiness
	ravie	Incongruent	
Ecouter de la musique me rend ...	active	Congruent	Happiness
	joyeuse	Incongruent	
La voisine nous a invité à une soirée, tout le monde m'a remarqué car j'étais ...	déguisée	Congruent	Happiness
	radieuse	Incongruent	
Ce matin j'ai terminé un examen en première, j'étais ...	rapide	Congruent	Happiness
	heureuse	Incongruent	
Demain on m'a proposé de faire une balade, je suis ...	disponible	Congruent	Happiness
	enjouée	Incongruent	

Table A2. Cont.

Sentence	Word	Congruency	Emotion
Hier j'ai travaillé en équipe pour organiser un événement, ça s'est très bien passé, j'étais ...	coopérative satisfaite	Congruent Incongruent	Happiness
Samedi, je suis partie à l'anniversaire de ma voisine, quand je lui ai offert son cadeau, elle m'a dit que c'est exactement ce qu'elle voulait, je suis ...	perspicace contente	Congruent Incongruent	Happiness
Un ami m'a donné rendez-vous chez lui à 19h pile. Il n'était pas prêt, il a dû voir que j'étais ...	ponctuelle exaspérée	Congruent Incongruent	Anger
Lorsque je travaille dans un environnement chaotique, je deviens ...	désorganisée furieuse	Congruent Incongruent	Anger
Chaque fois que le chien du voisin vient jouer dans ma cour, je suis ...	observatrice mécontente	Congruent Incongruent	Anger
Hier après-midi, j'ai essayé de résoudre un problème de mathématiques mais je n'ai pas réussi, j'étais ...	incompétente énervée	Congruent Incongruent	Anger
Mon voisin n'a pas terminé le projet sur lequel on travaille car il avait d'autres choses à faire, donc je me suis ...	adaptée fâchée	Congruent Incongruent	Anger
J'ai acheté un produit inefficace, j'ai demandé un remboursement, je suis ...	économe excédée	Congruent Incongruent	Anger
Lundi j'ai visité Paris, j'ai demandé la route à un passant mais il ne m'a pas répondu, j'étais ...	perdue contrariée	Congruent Incongruent	Anger
J'ai demandé à des passants comment utiliser le distributeur, ils ont refusé de m'aider donc j'étais ...	autonome irritée	Congruent Incongruent	Anger
Un homme m'a doublé à la caisse, j'étais ...	passive agacée	Congruent Incongruent	Anger
Jeudi, j'ai passé un examen, l'enseignant nous avait dit que c'était sur les statistiques bayésiennes mais ce n'était pas le cas, j'ai trouvé ça ...	compliqué frustrant	Congruent Incongruent	Anger
Quand je dois aller faire les courses, j'ai de l'énergie	énergie aversion	Congruent Incongruent	Disgust
Ce matin, j'avais rendez-vous, sur le trajet quelqu'un a vomi, ça m'a ...	retardé répugné	Congruent Incongruent	Disgust
Des adolescents regardaient des vidéos d'araignées sur leur téléphone, j'avais envie de ...	observer vomir	Congruent Incongruent	Disgust
Mardi soir, je suis parti au restaurant avec beaucoup de personnes, j'étais ...	sociable dégoûtée	Congruent Incongruent	Disgust
Samedi j'ai pris les transports en commun mais j'étais très ...	désorientée nauséuse	Congruent Incongruent	Disgust
Ce midi, j'ai marché dans une flaqué d'eau sale, je suis ...	maladroite écoeurée	Congruent Incongruent	Disgust
Pour son mariage, ma voisine a acheté une robe verte, j'ai trouvé ça ...	inadéquat immonde	Congruent Incongruent	Disgust
J'ai croisé un étudiant qui était en train de vomir pendant que mes amis m'appelaient, je n'ai donc pas fait attention à eux tellement j'étais ...	distracte révulsée	Congruent Incongruent	Disgust
J'étais au restaurant, les personnes à côté de moi mangeaient des escargots, j'ai trouvé ça ...	particulier dégueulasse	Congruent Incongruent	Disgust
Mon voisin a acheté des chaussures, je les trouve ...	petites infâmes	Congruent Incongruent	Disgust
Ce matin le téléphone d'un ami allait tomber dans l'eau, j'étais ...	réactive affolée	Congruent Incongruent	Fear
L'ascenseur était en panne, on m'a demandé d'intervenir mais j'étais ...	inefficace anxieuse	Congruent Incongruent	Fear

Table A2. Cont.

Sentence	Word	Congruency	Emotion
On m'a dit que la voisine était malade, je vais la contacter pour lui dire que je suis ...	joignable inquiète	Congruent Incongruent	Fear
On vient de m'inviter à explorer une maison abandonnée, je suis ...	partante apeurée	Congruent Incongruent	Fear
Hier, j'ai assisté à une agression, en rentrant, j'étais ...	vigilante terrorisée	Congruent Incongruent	Fear
Durant les vacances, j'étais sur le bord d'une falaise, les vagues s'écrasaient contre la paroi rocheuse, j'ai trouvé ça très ...	beau effrayant	Congruent Incongruent	Fear
Samedi nous avons pris l'avion, durant tout le vol, j'étais ...	silencieuse paniquée	Congruent Incongruent	Fear
La semaine dernière, j'étais dans une pièce sombre et je voyais des ombres bouger, j'étais ...	prudente craintive	Congruent Incongruent	Fear
J'ai regardé un documentaire sur les catastrophes naturelles, je suis devenue plus ...	instruite angoissée	Congruent Incongruent	Fear
Demain je vais aider des inconnus à organiser une soirée, je suis ...	profitable terrifiée	Congruent Incongruent	Fear
Lors de situations complexes et changeantes, je suis ...	flexible étonnée	Congruent Incongruent	Surprise
Samedi j'ai perdu mes affaires, je suis ...	désordonnée scandalisée	Congruent Incongruent	Surprise
Jeudi, je suis montée sur scène et je me suis rendu compte que j'avais oublié mon discours donc j'étais ...	concentrée stupéfaite	Congruent Incongruent	Surprise
J'ai assisté à une conférence sur l'histoire de la physique, un groupe faisait beaucoup de bruit dans le fond, j'étais ...	déconcentrée sidérée	Congruent Incongruent	Surprise
Vendredi on m'a annoncé le décès de ma voisine, je n'ai pas pu aller à l'enterrement car j'étais trop ...	occupée effarée	Congruent Incongruent	Surprise
J'étais en voiture avec mon voisin, à un moment il est allé très vite, ça m'a ...	secoué épaté	Congruent Incongruent	Surprise
Quand j'ai entendu le musicien jouer du piano, j'étais ...	attentive bluffée	Congruent Incongruent	Surprise
Ma voisine m'a poussé dans la piscine sans me prévenir, ça m'a ...	trempe traumatisé	Congruent Incongruent	Surprise
Quand je dois faire face à des changements inattendus, je suis ...	robuste abasourdie	Congruent Incongruent	Surprise
J'ai gagné un tournoi d'échec, je suis ...	intelligente surprise	Congruent Incongruent	Surprise

Each sentence is followed by two possible endings: The target word leads to either a congruent or incongruent context.

References

1. Fitriani, S.; Bruijnes, M.; Richards, D.; Abdulrahman, A.; Brinkman, W.P. What are We Measuring Anyway?—A Literature Survey of Questionnaires Used in Studies Reported in the Intelligent Virtual Agent Conferences. In Proceedings of the 19th ACM International Conference on Intelligent Virtual Agents, Paris, France, 2–5 July 2019; IVA '19, pp. 159–161. [CrossRef]
2. Tomasello, M. *Why We Cooperate*; A Boston Review Book; OCLC: Ocn319498167; MIT Press: Cambridge, MA, USA, 2009.
3. Johnson, Z.V.; Young, L.J. Neurobiological mechanisms of social attachment and pair bonding. *Curr. Opin. Behav. Sci.* **2015**, *3*, 38–44. [CrossRef] [PubMed]
4. Nazir, T.A.; Lebrun, B.; Li, B. Improving the acceptability of social robots: Make them look different from humans. *PLoS ONE* **2023**, *18*, e0287507. [CrossRef] [PubMed]
5. Walum, H.; Young, L.J. The neural mechanisms and circuitry of the pair bond. *Nat. Rev. Neurosci.* **2018**, *19*, 643–654. [CrossRef] [PubMed]

6. Breazeal, C. Emotion and sociable humanoid robots. *Int. J. Hum. Comput. Stud.* **2003**, *59*, 119–155. [[CrossRef](#)]
7. Duffy, B.R. Anthropomorphism and the social robot. *Robot. Auton. Syst.* **2003**, *42*, 177–190. [[CrossRef](#)]
8. Fong, T.; Nourbakhsh, I.; Dautenhahn, K. A survey of socially interactive robots. *Robot. Auton. Syst.* **2003**, *42*, 143–166. [[CrossRef](#)]
9. Baumeister, R.F.; Leary, M.R. The need to belong: Desire for interpersonal attachments as a fundamental human motivation. *Psychol. Bull.* **1995**, *117*, 497–529. [[CrossRef](#)] [[PubMed](#)]
10. Decety, J.; Jackson, P.L. The Functional Architecture of Human Empathy. *Behav. Cogn. Neurosci. Rev.* **2004**, *3*, 71–100. [[CrossRef](#)] [[PubMed](#)]
11. Epley, N.; Waytz, A.; Cacioppo, J.T. On seeing human: A three-factor theory of anthropomorphism. *Psychol. Rev.* **2007**, *114*, 864–886. [[CrossRef](#)]
12. Wykowska, A. Social Robots to Test Flexibility of Human Social Cognition. *Int. J. Soc. Robot.* **2020**, *12*, 1203–1211. [[CrossRef](#)]
13. Li, J.J.; Ju, W.; Reeves, B. Touching a Mechanical Body: Tactile Contact with Body Parts of a Humanoid Robot Is Physiologically Arousing. *J. Hum. Robot Interact.* **2017**, *6*, 118. [[CrossRef](#)]
14. Hegel, F.; Krach, S.; Kircher, T.; Wrede, B.; Sagerer, G. Understanding social robots: A user study on anthropomorphism. In Proceedings of the RO-MAN 2008—The 17th IEEE International Symposium on Robot and Human Interactive Communication, Munich, Germany, 1–3 August 2008; pp. 574–579. [[CrossRef](#)]
15. Kahn, P.H.; Kanda, T.; Ishiguro, H.; Gill, B.T.; Ruckert, J.H.; Shen, S.; Gary, H.E.; Reichert, A.L.; Freier, N.G.; Severson, R.L. Do people hold a humanoid robot morally accountable for the harm it causes? In Proceedings of the Seventh Annual ACM/IEEE International Conference on Human-Robot Interaction, Boston MA, USA, 5–8 March 2012; pp. 33–40. [[CrossRef](#)]
16. Chaminade, T.; Zecca, M.; Blakemore, S.J.; Takanishi, A.; Frith, C.D.; Micera, S.; Dario, P.; Rizzolatti, G.; Gallese, V.; Umiltà, M.A. Brain Response to a Humanoid Robot in Areas Implicated in the Perception of Human Emotional Gestures. *PLoS ONE* **2010**, *5*, e11577. [[CrossRef](#)] [[PubMed](#)]
17. Urgan, B.A.; Plank, M.; Ishiguro, H.; Poizner, H.; Saygin, A.P. EEG theta and Mu oscillations during perception of human and robot actions. *Front. Neurobotics* **2013**, *7*, 19. [[CrossRef](#)] [[PubMed](#)]
18. Fraune, M.R. Our Robots, Our Team: Robot Anthropomorphism Moderates Group Effects in Human–Robot Teams. *Front. Psychol.* **2020**, *11*, 1275. [[CrossRef](#)] [[PubMed](#)]
19. Bartneck, C.; Keijsers, M. The morality of abusing a robot. *Paladyn J. Behav. Robot.* **2020**, *11*, 271–283. [[CrossRef](#)]
20. Hagoort, P.; van Berkum, J. Beyond the sentence given. *Philos. Trans. R. Soc. Lond. Ser. B Biol. Sci.* **2007**, *362*, 801–811. [[CrossRef](#)] [[PubMed](#)]
21. Kutas, M.; Hillyard, S.A. Reading Senseless Sentences: Brain Potentials Reflect Semantic Incongruity. *Science* **1980**, *207*, 203–205. [[CrossRef](#)] [[PubMed](#)]
22. Osterhout, L.; Holcomb, P.J. Event-related brain potentials elicited by syntactic anomaly. *J. Mem. Lang.* **1992**, *31*, 785–806. [[CrossRef](#)]
23. Brown, C.; Hagoort, P. The Processing Nature of the N400: Evidence from Masked Priming. *J. Cogn. Neurosci.* **1993**, *5*, 34–44. [[CrossRef](#)]
24. Luck, S.J. *An Introduction to the Event-Related Potential Technique*; Cognitive Neuroscience; OCLC: Ocm57574045; MIT Press: Cambridge, MA, USA, 2005.
25. Reid, V.M.; Striano, T. N400 involvement in the processing of action sequences. *Neurosci. Lett.* **2008**, *433*, 93–97. [[CrossRef](#)]
26. van Elk, M.; van Schie, H.; Bekkering, H. Semantics in action: An electrophysiological study on the use of semantic knowledge for action. *J. Physiol. Paris* **2008**, *102*, 95–100. [[CrossRef](#)]
27. Friedrich, M.; Friederici, A.D. N400-like Semantic Incongruity Effect in 19-Month-Olds: Processing Known Words in Picture Contexts. *J. Cogn. Neurosci.* **2004**, *16*, 1465–1477. [[CrossRef](#)] [[PubMed](#)]
28. Hamm, J.P.; Johnson, B.W.; Kirk, I.J. Comparison of the N300 and N400 ERPs to picture stimuli in congruent and incongruent contexts. *Clin. Neurophysiol.* **2002**, *113*, 1339–1350. [[CrossRef](#)]
29. van Berkum, J.J.A.; Hagoort, P.; Brown, C.M. Semantic Integration in Sentences and Discourse: Evidence from the N400. *J. Cogn. Neurosci.* **1999**, *11*, 657–671. [[CrossRef](#)]
30. van Berkum, J.J.; Zwitserlood, P.; Hagoort, P.; Brown, C.M. When and how do listeners relate a sentence to the wider discourse? Evidence from the N400 effect. *Cogn. Brain Res.* **2003**, *17*, 701–718. [[CrossRef](#)] [[PubMed](#)]
31. Stanton, A. WALL-E, 2008. IMDb ID: Tt0910970 Event-Location: United States, Japan. Available online: <https://playitagain.info/site/wall-e/> (accessed on 10 March 2024).
32. Bay, M. Transformers, 2007. IMDb ID: Tt0418279 Event-Location: United States. Available online: <https://www.pinterest.com/pin/the-all-sparksector-seven-i-am-megatron-scene-transformers2007-movie-clip-bluray-hd--658792251752888543/> (accessed on 10 March 2024).
33. Oldfield, R. The assessment and analysis of handedness: The Edinburgh inventory. *Neuropsychologia* **1971**, *9*, 97–113. [[CrossRef](#)]
34. Palmer, J.A.; Makeig, S.; Kreutz-Delgado, K.; Rao, B.D. Newton method for the ICA mixture model. In Proceedings of the 2008 IEEE International Conference on Acoustics, Speech and Signal Processing, Las Vegas, NV, USA, 30 March–4 April 2008; pp. 1805–1808. [[CrossRef](#)]
35. Delorme, A.; Makeig, S. EEGLAB: An open source toolbox for analysis of single-trial EEG dynamics including independent component analysis. *J. Neurosci. Methods* **2004**, *134*, 9–21. [[CrossRef](#)] [[PubMed](#)]

36. Gramfort, A.; Luessi, M.; Larson, E.; Engemann, D.; Strohmeier, D.; Brodbeck, C.; Goj, R.; Jas, M.; Brooks, T.; Parkkonen, L.; et al. MEG and EEG data analysis with MNE-Python. *Front. Neurosci.* **2013**, *7*, 267. [[CrossRef](#)] [[PubMed](#)]
37. New, B.; Pallier, C.; Ferrand, L.; Matos, R. Une base de données lexicales du français contemporain sur internet: LEXIQUE™. A lexical database for contemporary french: LEXIQUE™. *L'Année Psychol.* **2001**, *101*, 447–462. [[CrossRef](#)]
38. Desroches, A.S.; Newman, R.L.; Joannis, M.F. Investigating the Time Course of Spoken Word Recognition: Electrophysiological Evidence for the Influences of Phonological Similarity. *J. Cogn. Neurosci.* **2009**, *21*, 1893–1906. [[CrossRef](#)]
39. Marslen-Wilson, W.D.; Welsh, A. Processing interactions and lexical access during word recognition in continuous speech. *Cogn. Psychol.* **1978**, *10*, 29–63. [[CrossRef](#)]
40. Peirce, J.; Hirst, R.; MacAskill, M. *Building Experiments in PsychoPy*, 2nd ed.; SAGE: Los Angeles, CA, USA; London, UK; New Delhi, India; Singapore; Washington, DC, USA; Melbourne, Australia, 2022.
41. Ho, C.C.; MacDorman, K.F. Revisiting the uncanny valley theory: Developing and validating an alternative to the Godspeed indices. *Comput. Hum. Behav.* **2010**, *26*, 1508–1518. [[CrossRef](#)]
42. Haslam, N.; Bastian, B.; Bissett, M. Essentialist Beliefs about Personality and Their Implications. *Personal. Soc. Psychol. Bull.* **2004**, *30*, 1661–1673. [[CrossRef](#)] [[PubMed](#)]
43. Gelman, S.A. *The Essential Child: Origins of Essentialism in Everyday Thought*; Oxford University Press: Oxford, UK, 2003. [[CrossRef](#)]
44. Gigandet, R.; Dutoit, X.; Li, B.; Diana, M.C.; Nazir, T.A. The “Eve effect bias”: Epistemic Vigilance and Human Belief in Concealed Capacities of Social Robots. In Proceedings of the 2023 IEEE International Conference on Advanced Robotics and Its Social Impacts (ARSO), Berlin, Germany, 5–7 June 2023; pp. 15–20. [[CrossRef](#)]
45. Hagoort, P.; Hald, L.; Bastiaansen, M.; Petersson, K.M. Integration of Word Meaning and World Knowledge in Language Comprehension. *Science* **2004**, *304*, 438–441. [[CrossRef](#)] [[PubMed](#)]
46. van Berkum, J.J.A.; van Den Brink, D.; Tesink, C.M.J.Y.; Kos, M.; Hagoort, P. The Neural Integration of Speaker and Message. *J. Cogn. Neurosci.* **2008**, *20*, 580–591. [[CrossRef](#)] [[PubMed](#)]
47. Spatola, N.; Wudarczyk, O.A. Ascribing emotions to robots: Explicit and implicit attribution of emotions and perceived robot anthropomorphism. *Comput. Hum. Behav.* **2021**, *124*, 106934. [[CrossRef](#)]
48. Leyens, J.P.; Paladino, P.M.; Rodriguez-Torres, R.; Vaes, J.; Demoulin, S.; Rodriguez-Perez, A.; Gaunt, R. The Emotional Side of Prejudice: The Attribution of Secondary Emotions to Ingroups and Outgroups. *Personal. Soc. Psychol. Rev.* **2000**, *4*, 186–197. [[CrossRef](#)]
49. Leyens, J.P.; Rodriguez-Perez, A.; Rodriguez-Torres, R.; Gaunt, R.; Paladino, M.P.; Vaes, J.; Demoulin, S. Psychological essentialism and the differential attribution of uniquely human emotions to ingroups and outgroups. *Eur. J. Soc. Psychol.* **2001**, *31*, 395–411. [[CrossRef](#)]
50. Viki, G.T.; Winchester, L.; Titshall, L.; Chisango, T.; Pina, A.; Russell, R. Beyond Secondary Emotions: The Infrahumanization of Outgroups Using Human-Related and Animal-Related Words. *Soc. Cogn.* **2006**, *24*, 753–775. [[CrossRef](#)]
51. Stock-Homburg, R. Survey of Emotions in Human-Robot Interactions: Perspectives from Robotic Psychology on 20 Years of Research. *Int. J. Soc. Robot.* **2022**, *14*, 389–411. [[CrossRef](#)]
52. Spatola, N.; Wudarczyk, O.A. Implicit Attitudes Towards Robots Predict Explicit Attitudes, Semantic Distance Between Robots and Humans, Anthropomorphism, and Prosocial Behavior: From Attitudes to Human-Robot Interaction. *Int. J. Soc. Robot.* **2021**, *13*, 1149–1159. [[CrossRef](#)]
53. Matheson, E.; Minto, R.; Zampieri, E.G.G.; Faccio, M.; Rosati, G. Human-Robot Collaboration in Manufacturing Applications: A Review. *Robotics* **2019**, *8*, 100. [[CrossRef](#)]
54. Levenson, R.W. Human emotion: A functional view. In *The Nature of Emotion: Fundamental Questions*; Series in Affective Science; Ekman, P., Davidson, R.J., Eds.; Oxford University Press: New York, NY, USA, 1994; pp. 123–126.
55. Christov-Moore, L.; Simpson, E.A.; Coudé, G.; Grigaityte, K.; Iacoboni, M.; Ferrari, P.F. Empathy: Gender effects in brain and behavior. *Neurosci. Biobehav. Rev.* **2014**, *46*, 604–627. [[CrossRef](#)] [[PubMed](#)]
56. Nomura, T.; Suzuki, T.; Kanda, T.; Kato, K. Measurement of negative attitudes toward robots. *Interact. Stud. Soc. Behav. Commun. Biol. Artif. Syst.* **2006**, *7*, 437–454. [[CrossRef](#)]
57. Nomura, T.; Kanda, T.; Kidokoro, H.; Suehiro, Y.; Yamada, S. Why do children abuse robots? *Interact. Stud. Soc. Behav. Commun. Biol. Artif. Syst.* **2016**, *17*, 347–369. [[CrossRef](#)]
58. Nomura, T.; Syrdal, D.S.; Dautenhahn, K. Differences on social acceptance of humanoid robots between Japan and the UK. In Proceedings of the 4th Int Symposium on New Frontiers in Human-Robot Interaction, Canterbury, UK, 21–22 April 2015.
59. Bartneck, C.; Nomura, T.; Kanda, T.; Tomohiro, S.; Kennsuke, K. A cross-cultural study on attitudes towards robots. In Proceedings of the HCI International 2005, Las Vegas, NV, USA, 22–27 July 2005; Salvendy, G., Ed. [[CrossRef](#)]

Disclaimer/Publisher’s Note: The statements, opinions and data contained in all publications are solely those of the individual author(s) and contributor(s) and not of MDPI and/or the editor(s). MDPI and/or the editor(s) disclaim responsibility for any injury to people or property resulting from any ideas, methods, instructions or products referred to in the content.