



HAL
open science

Variation in hemolymph content and properties among three Mediterranean bee species

Salma A Elfar, Iman M Bahgat, Mohamed A Shebl, Mathieu Lihoreau,
Mohamed M Tawfik

► **To cite this version:**

Salma A Elfar, Iman M Bahgat, Mohamed A Shebl, Mathieu Lihoreau, Mohamed M Tawfik. Variation in hemolymph content and properties among three Mediterranean bee species. 2024. hal-04569803

HAL Id: hal-04569803

<https://hal.science/hal-04569803>

Preprint submitted on 6 May 2024

HAL is a multi-disciplinary open access archive for the deposit and dissemination of scientific research documents, whether they are published or not. The documents may come from teaching and research institutions in France or abroad, or from public or private research centers.

L'archive ouverte pluridisciplinaire **HAL**, est destinée au dépôt et à la diffusion de documents scientifiques de niveau recherche, publiés ou non, émanant des établissements d'enseignement et de recherche français ou étrangers, des laboratoires publics ou privés.

Variation in hemolymph content and properties among three Mediterranean bee species

Salma A. Elfar^{1,*}, Iman M. Bahgat¹, Mohamed A. Shebl², Mathieu Lihoreau^{3,*}, Mohamed M. Tawfik¹

¹ Zoology Department, Faculty of Science, Port Said University, Egypt. <https://orcid.org/0000-0001-9994-683X>
s.ashraf@sci.psu.edu.eg, <https://orcid.org/0000-0002-0826-6853>, eman.bahgat@sci.psu.edu.eg <https://orcid.org/0000-0003-3582-0562>, tawfik@sci.psu.edu.eg

² Department of Plant Protection, Faculty of Agriculture, Suez Canal University, Ismailia, Egypt. <https://orcid.org/0000-0002-4099-9846>, mohamedshebl2002@hotmail.com

³ Research Center on Animal Cognition, Center for Integrative Biology; CNRS, University Paul Sabatier, 31062 Toulouse, France, mathieu.lihoreau@univ-tlse3.fr

* Correspondence: s.ashraf@sci.psu.edu.eg, mathieu.lihoreau@univ-tlse3.fr

Abstract: Hemolymph, as mediator of immune responses and nutrient circulation, can be used as physiological marker of an insect's health, environmental quality or ecological adaptations. Recent studies reported intraspecific variation in protein contents and biological activities of the hemolymph of honey bees related to their diet. Here we measured interspecific variation in three common bee species in the Mediterranean Basin with contrasting ecologies: *Apis mellifera*, *Chalicodoma siculum*, and *Xylocopa pubescens*. Despite all the bees were collected in the same area, we found important quantitative and qualitative variations of hemolymph extracts across species. Samples of *A. mellifera* and *C. siculum* had much higher protein concentration, anticancer, antimicrobial and antioxidant activities than samples of *X. pubescens*. This first descriptive study suggests life history traits of bee species have strong influences on their hemolymph properties and call for future large scale comparative analyses across more species and geographical areas.

Keywords: Honey bees; carpenter bees; Megachilids; hemolymph; proteome; anticancer; antibacterial; antioxidant

1. Introduction

Bees are a large and diverse taxonomic group of about 20,000 species categorized in seven families [1]. Many of these species provide well-known natural products such as honey, bee pollen, wax, royal jelly and venom that have antioxidant, antibacterial or antitumor activities [2]. Increasing evidence suggest bee hemolymph also possesses interesting biological properties [3–6].

Hemolymph is a vital fluid involved in nutrient circulation to nourish tissues and in immune responses to fight infections [7]. Bee hemolymph contains various hydrophilic (e.g. hemocyanin) and hydrophobic (e.g. apolipoporphins) proteins [8–10]. High concentrations of these proteins improve the immune responses of bees and their resistance to infections [11–13]. Recent work described significant intraspecific variations in the proteomic profiles of the hemolymph of bees that are likely related to the diet [6,14]. Therefore, it has been proposed that the proteomic structure of hemolymph

38 can be used to monitor the physiological conditions of bees as well as the quality of their environment.
39 Since bees are found across a wide range of habitats worldwide [1], we also expect hemolymph
40 variation across species to exist and reflect key ecological adaptations.

41 Here we explored interspecific variations in hemolymph properties of bees from the
42 Mediterranean Basin. We analysed hemolymph samples of three common species collected in the
43 same area in Egypt: *Apis mellifera*, *Xylocopa pubescens* and *Chalicodoma siculum* (Figure 1). *A.*
44 *mellifera* (honey bees) are social Apidae nesting in cavities [15]. *X. pubescens* (carpenter bees) are
45 solitary Apidae that build their nests in wood [16,17]. *C. siculum* are solitary Megachilidae that build
46 their nests with mud [18]. This is a descriptive study that primarily aimed at analyzing honey bee
47 hemolymph and comparing it to that of two other common yet poorly studied bee species (*C. siculum*
48 and *X. pubescens*).

49

50 **2. Materials and Methods**

51 **Bees**

52 We sampled bees from 11 species (see details in Table 1) with a sweep net [19] between October
53 2020 (*A. mellifera*) and February 2021 (*X. pubescens* and *C. siculum*) in cultivated locations planted
54 with faba beans (*Vicia faba*) in the Ismailia Governorate area (Egypt). We collected all specimens from
55 each species in the same location on the same day. We then stored the bees at -20 °C until extraction
56 and analysis of the hemolymph [20]. Since we only obtained sufficient amounts of hemolymph for
57 three large-bodied species (*A. mellifera*, *X. pubescens*, *C. siculum*), we focused all our further
58 analyses on these three species (Table 1).

59

60 Table 1. Details about bee sampling and hemolymph extraction.

61

62 Hemolymph extraction and preparation

63 We extracted hemolymph from the specimen by using sterile insulin syringes to puncture the body
 64 close to the membrane of the coxa and applying a slight pressure on the abdominal region. We pooled
 65 the hemolymph samples from the same bee species and kept them in sterile Eppendorf tubes at -20
 66 °C until lyophilization by using freeze drying [20]. We then dissolved the weighed lyophilized
 67 hemolymph samples in two different but complementary solvents (a hydrophilic solvent: phosphate
 68 buffer saline – PBS [21]; and a hydrophobic solvent: dimethyl sulfoxide – DMSO [22]) in order to
 69 extract a maximum of molecules as the polarity of the solvent influences the protein structure,
 70 solubility and stability [23]. For each test both PBS and DMSO were used as negative controls.

71

72 Analysis of the protein content

73

74 Protein concentration

75 We measured the protein concentration (mg/mL) of the hemolymph extracts following Desjardins [24]
 76 using a Thermo Scientific™ (Waltham, MA, USA) Nano Drop™. One Micro volume UV-Vis
 77 Spectrophotometer with Bovine serum albumin (BSA) as standard in each sample (2 µL, 1 mg/mL).
 78 We analyzed three samples per bee species.

79

80 SDS-polyacrylamide gel electrophoresis

81 We used gel electrophoresis to separate protein bands of the hemolymph extracts based on their
 82 molecular weight using sodium dodecyl sulphate polyacrylamide gel electrophoresis (SDS-PAGE)

Bee species	Body size	Number of specimens	Weight of lyophilized hemolymph (grams)	Amount of hemolymph (microliter)	Location
<i>Apis mellifera</i>	Medium	81	0.15	~800	Ismailia
<i>Xylocopa pubescens</i>	Large	20	0.34	~1700	Ismailia
<i>Chalicodoma siculum</i>	Medium	29	0.106	~590	Ismailia
<i>Andrena savignyi</i>	Medium	50	<0.01	< 50	Ismailia
<i>Osmia latreillei</i>	Medium	<10	<0.001	< 50	Ismailia
<i>Colletes lacunatus</i>	Medium	16	0.039	< 50	Ismailia
<i>Amegilla quadrifasciata</i>	Medium	60	0.0029	< 50	Ismailia
<i>Megachile flavipes</i>	Medium	19	<0.001	< 50	Ismailia
<i>Thyreus bucinatus</i>	Large	6	<0.001	< 50	Ismailia

83 following Laemmli [25] with modifications. We mixed equal volumes of hemolymph samples with
84 solubilizing buffer (62.5 mM Tris-HCl (pH 6.8), 20% glycerol, 25(w/v) SDS, 0.5% 2-mercaptoethanol
85 and 0.01% bromophenol blue). After heating for 4 min at 95°C, we inserted the samples into the wells
86 (15 µL sample with 100 µg/mL protein concentration per well) of the separating gel (12% PAGE gel).
87 We then ran an electrophoresis at constant 35 mA for 2 h using Consort N.V. (Belgium) mini vertical
88 electrophoresis system with running buffer. We prepared the staining gel using 0.1% Coomassie
89 Brilliant Blue (R-250) for the visualization of the protein bands.

90

91 *High performance liquid chromatography*

92 In complement to the electrophoresis, we performed an HPLC and analyzed the chromatograms by
93 investigating the protein peaks and their separation based on their retention time. We obtained equal
94 concentration (5 mg/mL) of hemolymph extracts in each of the two solvents (PBS or DMSO). We
95 analysed the extracts (70 µL) using a YL9100 HPLC System with Stationary phase C18 column
96 (Promosil C18 Column 5 µm, 150 mm×4.6mm) with acetonitrile (ACN) gradients of (10% - 100%)
97 acetonitrile in water mobile phase for 50 min at flow rate = 1 mL/min. The chromatogram was detected
98 using a UV detector at wavelength 280 nm following Basseri [26] with some modifications.

99

100 **Analysis of biological activities**

101

102 *Anticancer activity*

103 We measured antitumor activities of hemolymph extracts using a 3-[4,5-methylthiazol-2-yl]-2,5-
104 diphenyl-tetrazolium bromide (MTT) assay [27]. We seeded the cells from human liver cancer
105 (HepG2) and human cervical cancer (HeLa) in 96-well plate for 24 h (5×10³cells/well). After
106 incubation, we treated the cells with 100 µL of the hemolymph extracts at serial concentrations in PBS
107 and DMSO solvents (31.25, 62.5, 125, 250, 500 and 1000 µg/mL) and incubated them at 37 °C in 5%
108 CO₂ atmosphere for 48 h. We then washed the cells using PBS. We added fresh medium with MTT
109 dye and incubated at 37°C for 4 h. We then added DMSO for the solubilisation of the formazan
110 crystals in the viable cells [28]. We used a Bio-Tek ELISA micro plate reader to measure the
111 absorbance at 540 nm. The experiment was performed in triplicates. We calculated the percentage of
112 the cell viability (%) as follows:

$$113 \quad \text{Cell viability (\%)} = (A_T / A_C) \times 100.$$

114 Where A_T was the absorbance of treated cells with extracts, and A_C was the absorbance of the control
115 cells (untreated cells). The IC₅₀ values (i.e. concentration of extracts that cause inhibition in the growth
116 of 50% of the cells) were calculated for each sample using a dose-response curve with dose
117 concentration (X-axis) and cell cytotoxicity percentage (Y-axis).

118

119 *Antibacterial activity*

120 We analyzed the antimicrobial activity of the hemolymph using the agar well diffusion method of
121 Magaldi [29] against four bacterial strains (*Bacillus subtilis*, *Staphylococcus aureus*, *Escherichia coli*
122 and *Salmonella typhimurium*). We inoculated the agar plate surface by distributing bacterial

123 suspension. We then made a 6.0 mm hole aseptically using a sterilized tip and added 100 μ L of each
124 extract (10 mg/mL) or control into the well. We used PBS and DMSO as negative controls and
125 Gentamycin as a positive control. After the incubation, we expressed the in vitro antimicrobial activity
126 as inhibition zones in millimetres (mm) [30,31].

127

128 *Scavenging ability*

129 We measured the scavenging ability of hemolymph extracts using 1,1-Diphenyl-2-picrylhydrazyl
130 (DPPH) free radical [32]. We incubated a mixture of 100 μ L DPPH methanolic solution (0.004% in 95%
131 methanol) and 300 μ L of each hemolymph extracts at concentration 1 mg/mL and standard at 25 $^{\circ}$ C in
132 the dark for about 30-60 min. We used ascorbic acid (Vitamin C) as positive control, and measured
133 the colour changes using a spectrophotometer at 515 nm. We calculated the DPPH scavenging
134 activity of the samples using the following equation [33]:

$$135 \quad \text{Antioxidant activity (\%)} = 100 \times [(A_N - A_E)/A_N],$$

136 Where A_N was the absorbance of the negative control, and A_E was the absorbance of the sample or of
137 the standard.

138

139 *Hemolytic activity assay*

140 We assessed the hemolysis activities of the bee hemolymph extracts against human erythrocytes by
141 applying procedures of Malagoli [34]. We added blood samples to test tubes containing blood
142 anticoagulant (EDTA) and centrifuged the tubes for 5 min at 10,000 rpm. We then suspended red
143 blood cells in sterile PBS and incubated them with 100 μ L volume from series of various
144 concentrations of the tested extracts (range: 156.25 - 5000 μ g/mL). After incubation of the tubes at
145 room temperature for one hour, we centrifuged the tubes for 5 min at 1×10^3 rpm and measured the
146 absorbance of the supernatant at 570 nm. We used Triton 10% as positive control while PBS and
147 DMSO 10% as negative controls. We ran triplicate analysis for each bee species. We then calculated
148 the hemolysis percentage for each extract as follows:

$$149 \quad \text{Hemolysis (\%)} = 100 \times [(A_S - A_N) / (A_P - A_N)].$$

150 Where A_S was samples absorbance, A_N was the negative control absorbance, and A_P was the positive
151 control absorbance.

152

153 **Statistical analysis**

154 We analyzed the data in SPSS 22.0. We used Student's t-tests to compare protein concentrations and
155 IC_{50} of the hemolymph extracts in PBS and DMSO. We compared parameters of bee hemolymph (i.e
156 protein concentrations, IC_{50} s, antibacterial and antioxidant activities in either PBS or DMSO) across
157 species using one-way ANOVAs followed by Tukey's HSD post-hoc tests. We used two-way ANOVAs
158 to compare parameters of bee hemolymph (i.e. protein concentrations, IC_{50} s, antibacterial and
159 antioxidant activities) in both solvents among the three bee species. We considered significant
160 differences between samples when the p-value was lower than 0.05. All means are reported with their
161 standard error (mean \pm SE).

162 **3. Results**

163

164 Analysis of protein content

165

166 Protein concentration

167 Protein concentration of hemolymph varied across species and solvents (Two-ways ANOVA, species
168 x solvent: $F(2, 12) = 111.97, P < 0.001$; Figure 1). Highest protein concentrations were recorded for *C.*
169 *siculum* in PBS (0.27 ± 0.01 mg/mL, $n=3$) and DMSO (0.107 ± 0.01 mg/mL, $n=3$). Lowest protein
170 concentrations were recorded for *X. pubescens* in PBS (0.02 ± 0.005 mg/mL, $n=3$) and DMSO (0.06
171 ± 0.001 mg/mL, $n=3$). Hemolymph of *A. mellifera* had values falling in between for PBS and similar
172 values as *C. siculum* for DMSO.

173

174

175

176

177

178

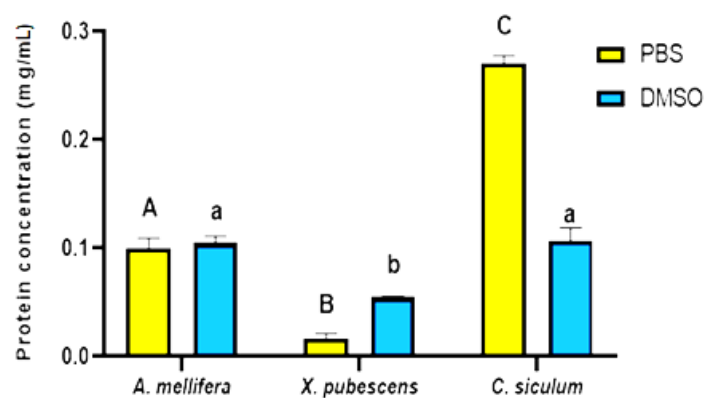
179

180

181

182

183



184 Figure 1. Protein concentration in mg/mL for hemolymph extracts of three bee species (*Apis mellifera*,
185 *Xylocopa pubescens* and *Chalicodoma siculum*) in PBS or DMSO. Bars and error bars show the mean
186 \pm SE of triplicate results. Upper-case letters represent indicate significant differences between PBS
187 extracts and lower-case letters indicate significant differences between DMSO extracts (Tukey's HSD
188 test: $P \leq 0.05$).

189

190 SDS-polyacrylamide gel electrophoresis

191 Protein bands in electrophoresis gels of hemolymph extracted in PBS and DMSO had a molecular
192 weight ranging from ~5 to 250 kDa (Figure 2).

193

194

195

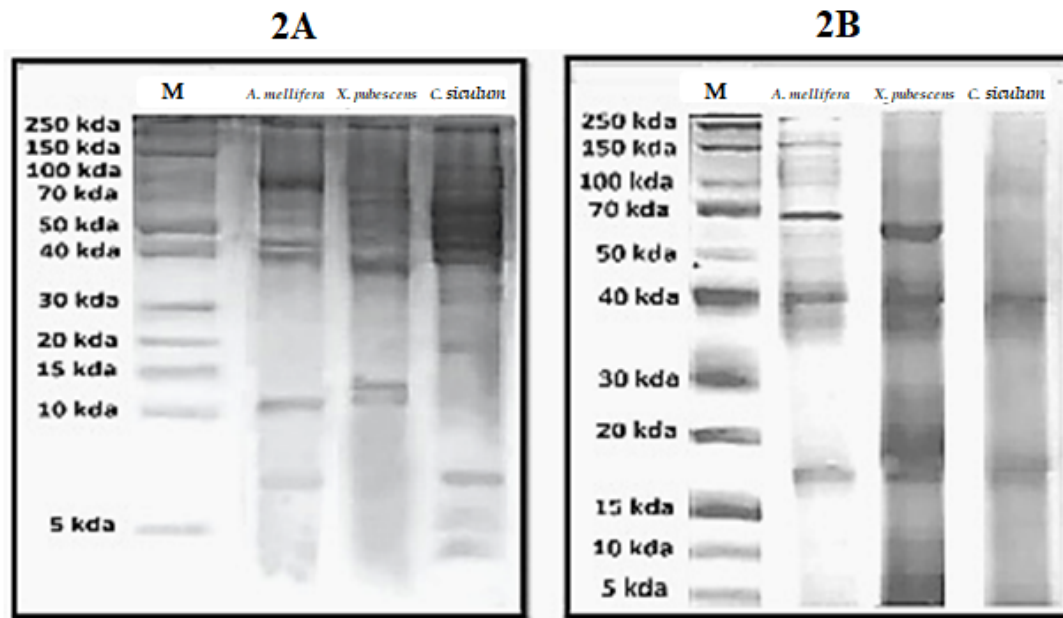
196

197

198

The PBS dissolved extracts were characterized by five bands common to the three bee species with molecular weights of ~40, ~60, ~70, ~110 and ~250 kDa (Figure 2A). Other bands however were only observed in some species. A band with molecular weight of ~7 kDa was only recorded in *A. mellifera* and *C. siculum*. Another band with molecular weight of ~10 kDa was only recorded in *A. mellifera* and *X. pubescens*. Five bands with molecular weights of ~4, ~5, ~17, ~37 and ~100 kDa were exclusively recorded in *C. siculum*.

199 The DMSO dissolved extracts were characterized by five bands common to the three bee
 200 species with molecular weights of ~5, ~17, ~40, ~60 and ~110 kDa (Figure 2B). A band with molecular
 201 weight of ~150 was recorded in *A. mellifera* and *X. pubescens*. Two bands with molecular weights of
 202 ~10 and ~25 kDa were only recorded in *X. pubescens*.



203 Figure 2. Pictures of SDS-PAGE gel for hemolymph of the three bee species (*Apis mellifera*, *Xylocopa*
 204 *pubescens* and *Chalicodoma siculum*) extracted in (A) PBS or (B) DMSO. M is the marker.

205

206 RP-HPLC analysis

207 By analyzing the chromatogram of the PBS dissolved hemolymph extracts we found the presence of 6
 208 peaks common to the three bee species at retention times of 7.5, 11.1, 14.4, 15.4, 22.9 and 28.3 min
 209 (Table 2). In DMSO dissolved extracts, we detected 10 peaks common to the three bee species at
 210 retention times of 9.5, 23.3, 24.6, 25.5, 26.8, 28.3, 32.6, 33.2, 40.3 and 44.8 min (Table 2).

211

212 Table 2. HPLC most common chromatogram peaks profiles of the hemolymph of three bee species
 213 (*Apis mellifera*, *Xylocopa pubescens* and *Chalicodoma siculum*) extracted in PBS or DMSO. N.A.: not
 214 applicable.

215

Retention time (minutes)	Peak area (x10 ² mV.s)					
	<i>A. mellifera</i>		<i>X. pubescens</i>		<i>C. siculum</i>	
	PBS	DMSO	PBS	DMSO	PBS	DMSO
7.5	4.6	N.A	0.7	N.A	177.4	N.A

9.5	N.A	327	N.A	7.7	N.A	9.7
11.1	2.3	N.A	0.4	N.A	25.2	N.A
14.4	5.9	N.A	0.3	N.A	10.3	N.A
15.4	5.5	N.A	0.4	N.A	2.2	N.A
22.9	13.9	N.A	1.2	N.A	3.5	N.A
23.3	N.A	3.6	N.A	0.1	3.6	3.4
24.6	N.A	3.4	N.A	0.6	N.A	1.4
25.5	9.1	3.6	1.5	0.1	N.A	3.8
26.8	N.A	4.0	1.1	0.3	2.8	0.6
28.3	5.3	1.5	1.5	0.4	1.2	0.7
32.6	N.A	1.4	N.A	2.2	N.A	1.0
33.2	N.A	0.3	N.A	1.3	N.A	0.8
40.3	N.A	0.1	N.A	0.1	N.A	0.1
44.8	N.A	1.0	N.A	1.2	N.A	0.9

216

217

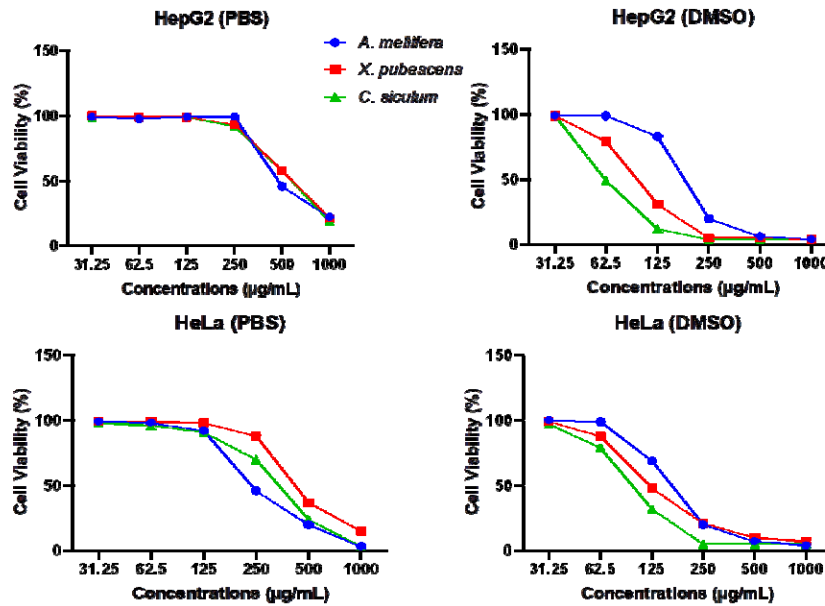
218 **Analysis of biological activities**

219

220 *Anticancer activity*

221 We evaluated the antiproliferative actions of the hemolymph extracts against the viability of hepatic
222 and cervical carcinoma cells. All hemolymph extracts resulted in inhibition of the cell viability against
223 the tested cancer cell lines in a dose-dependent manner after 48 h of incubation, irrespective of the
224 solvent used (Figure 3). However, the DMSO dissolved extracts showed higher overall cytotoxic
225 activity than the PBS dissolved extracts for HepG2 and for HeLa (Two-ways ANOVA, HepG2: $F(2, 12) = 26.667$, $P < 0.001$; HeLa: $F(2, 12) = 117.111$, $P < 0.001$) (Figure 4).
226

227
228
229
230
231
232
233
234
235
236
237
238
239
240
241
242

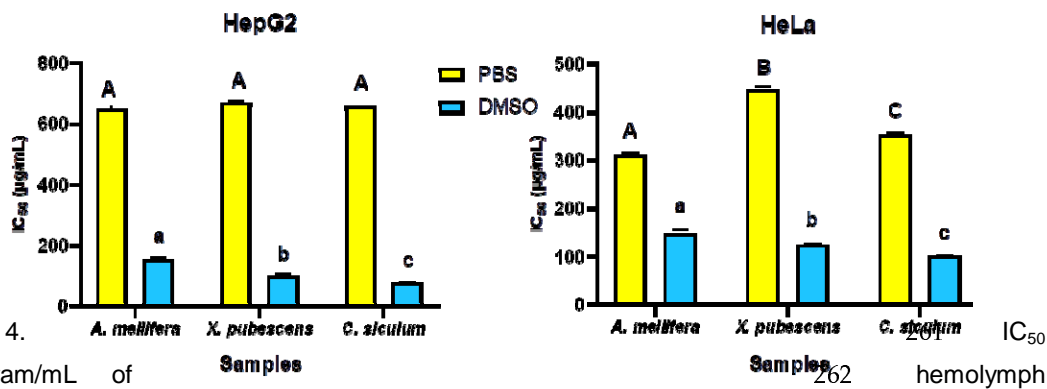


243 Figure 3. Effects of hemolymph extracts of three bee species (*Apis mellifera*, *Xylocopa pubescens* and
244 *Chalicodoma siculum*) on cell proliferation of human cancer (HepG2 and HeLa) cell lines at different
245 concentrations in PBS or DMSO.

246
247
248
249
250
251
252

Among the DMSO dissolved extracts, *C. siculum* hemolymph had the highest cytotoxic effects against
HepG2 and HeLa cell lines (IC₅₀ HepG2 = 77.35 µg/mL, IC₅₀ HeLa = 101.2 µg/mL). The lowest
cytotoxic effects were recorded for *A. mellifera* hemolymph (IC₅₀ HepG2 = 153.1 µg/mL, IC₅₀ HeLa =
148.46 µg/mL) (Figure 4). Among the PBS dissolved extracts, *A. mellifera* hemolymph had the highest
cytotoxic effects (IC₅₀ HepG2 = 649.4 µg/mL, IC₅₀ HeLa = 312.54 µg/mL) and *X. pubescens* had the
lowest (IC₅₀ HepG2 = 669.2 µg/mL, IC₅₀ HeLa = 447.2 µg/mL) (Figure 4).

253
254
255
256
257
258
259
260
261
262



263 Figure 4. IC₅₀ in µgram/mL of
264 hemolymph extracts of three bee species (*Apis mellifera*, *Xylocopa pubescens* and *Chalicodoma siculum*) against
265 HepG2 and HeLa cell lines, using PBS or DMSO as solvents. Bars and error bars represent the mean
values ±SE of triplicate results. Upper-case letters indicate significant difference between PBS extracts

266 and lower-case letters indicate significant differences between DMSO extracts (Tukey's HSD test: $P \leq$
 267 0.05).

268

269 *Antimicrobial activity*

270 We observed the antibacterial activity of hemolymph extracts against Gram-positive and Gram-
 271 negative bacteria (Table 3, see example in Figure 5). The results showed comparable antibacterial
 272 activities of hemolymph extracts among the tested bee species and solvent; *Bacillus subtilis* (ANOVA,
 273 $F(2, 12) = 0.800, P=0.472$), *Staphylococcus aureus* (ANOVA, $F(2, 12) = 0.042, P=0.960$),
 274 *Escherichia coli* (ANOVA, $F(2, 12) = 2.054, P=0.171$) and *Salmonella typhimurium* (ANOVA, $F(2, 12)$
 275 $= 2.771, P=0.102$).

276

277 Table 3. Inhibition zone (mm) of hemolymph from three bee species (*Apis mellifera*, *Xylocopa*
 278 *pubescens* and *Chalicodoma siculum*) extracted in PBS or DMSO against various types of bacteria
 279 (*Bacillus subtilis*, *Staphylococcus aureus*, *Escherichia coli* and *Salmonella typhimurium*). CON:
 280 Gentamycin as positive control, N.A: not applicable, \pm S.E.: standard error values obtained from
 281 triplicate measurements. Values with different superscript letters in a column are significantly different
 282 (Tukey's HSD test: $P \leq 0.05$), a versus *A. mellifera*, b versus *X. pubescens* and c versus *C. siculum*.

Sample Pathogen	PBS			DMSO			CON.
	<i>A. mellifera</i>	<i>X. pubescens</i>	<i>C. siculum</i>	<i>A. mellifera</i>	<i>X. pubescens</i>	<i>C. siculum</i>	
<i>B. subtilis</i>	34 \pm 1.0 ^{bc}	26 \pm 0.3 ^a	26 \pm 0.8 ^a	32 \pm 1.6 ^b	25 \pm 0.8 ^a	27 \pm 1.4	22 \pm 0.6
<i>S. aureus</i>	25 \pm 2.0	25 \pm 0.8	23 \pm 1.4	24 \pm 0.9	25 \pm 0.3	22 \pm 0.5	15 \pm 0.9
<i>E. coli</i>	40 \pm 1.5 ^{bc}	24 \pm 1.4 ^a	25 \pm 0.5 ^a	38 \pm 1.0 ^{bc}	22 \pm 0.8 ^a	23 \pm 0.3 ^a	17 \pm 1.0
<i>Salmonella typhimurium</i>	N.A	25 \pm 1.1	24 \pm 1.1	N.A	21 \pm 0.8	22 \pm 1.1	23 \pm 0.7

283

284

285

286

287

288

289

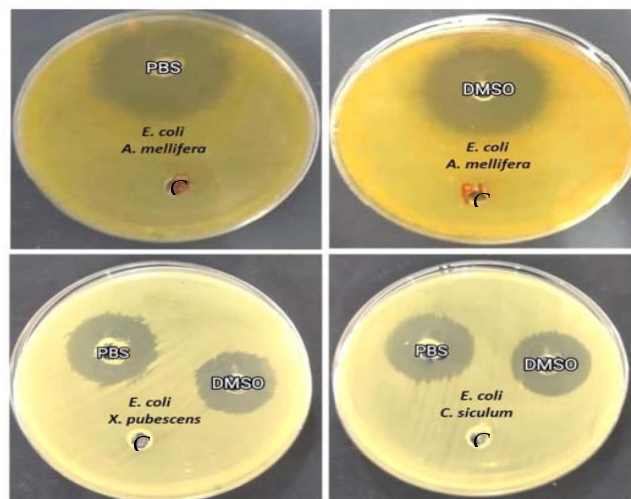
290

291

292

293

294



295 Figure 5. Antimicrobial activity of hemolymph from three bee species (*Apis mellifera*, *Xylocopa*
296 *pubescens* and *Chalicodoma siculum*) extracted in PBS or DMSO against *E. coli* bacteria and by
297 using negative control.

298

299 *DPPH radical scavenging assay*

300 The hemolymph extracts of *A. mellifera*, *X. pubescens* and *C. siculum* possessed effective scavenging
301 actions in both PBS and DMSO (Figure 6). Overall, the hemolymphs of the different species showed
302 different antioxidant activities (two-ways ANOVA, species: $F(2, 12) = 5.06$, $P=0.025$) and these values
303 were higher in PBS dissolved extracts (two-ways ANOVA, solvents: $F(1, 12) = 10.729$, $P=0.007$).
304 However, for a given species the antioxidant activity in both solvents was comparable (two-ways
305 ANOVA, species x solvent: $F(2, 12) = 2.451$, $P=0.128$).

306 The highest antioxidant activity was reported for *A. mellifera* PBS extracts (29.1%) and *C.*
307 *siculum* DMSO extracts (25.2%), while *X. pubescens* reported the lowest antioxidant activity (25.7%)
308 in PBS and (19.3%) in DMSO (Figure 6).

309

310

311

312

313

314

315

316

317

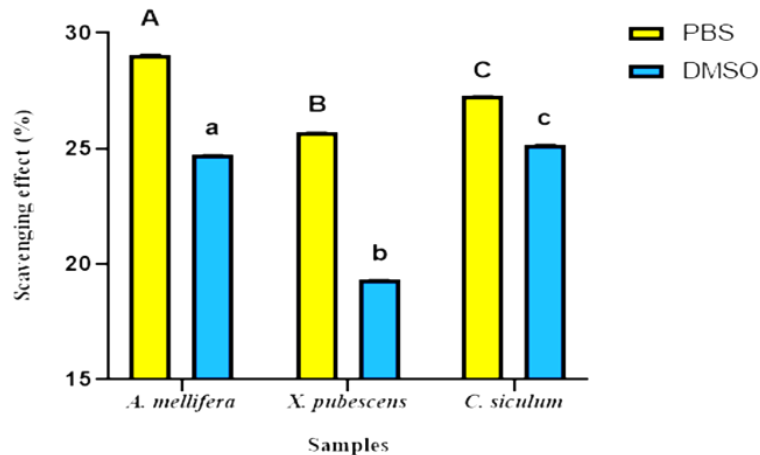
318

319

320

321

322



323

324

325

326

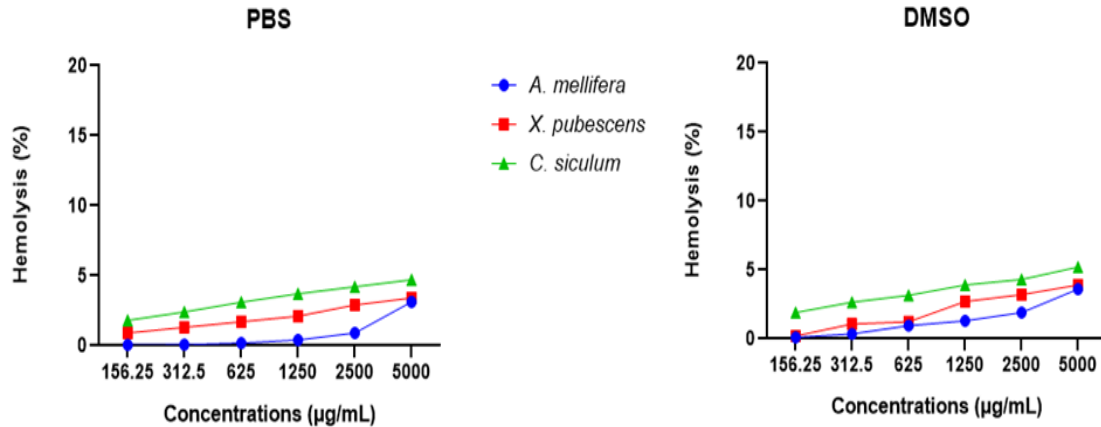
327

328

329 *Hemolytic activity*

330 Hemolytic properties of the bee hemolymphs were tested against human erythrocytes. For the three
331 bee species, hemolymph extracts possessed either no or low hemolytic activity against human
332 erythrocytes in reference to negative (PBS and DMSO 10%) and positive controls (Triton10%) (Figure
333 7).

334



335 Figure 7. Hemolytic activity of hemolymph extracts from three bee species (*Apis mellifera*, *Xylocopa*
 336 *pubescens* and *Chalicodoma siculum*) at different concentrations against human erythrocytes.
 337 Hemolymph samples were extracted in PBS or DMSO.
 338

339 4. Discussion

340 We aimed to evaluate the interspecific variability in hemolymph protein content and biological activities
 341 from bees collected in the same locality in Northern Egypt. We found considerable variation among
 342 the three bee species for which we managed to extract enough hemolymph after our sampling
 343 campaign (see summary results in Table 4).
 344

344

345 Table 4. Summary of analysis of hemolymph of three bee species (*Apis mellifera*, *Xylocopa*
 346 *pubescens* and *Chalicodoma siculum*) extracted in two solvents (PBS and DMSO). (+): high, (+/-):
 347 medium and (-): low.
 348

348

	<i>A. mellifera</i>		<i>X. pubescens</i>		<i>C. siculum</i>	
	PBS	DMSO	PBS	DMSO	PBS	DMSO
Protein concentration	(+/-)	(+/-)	(-)	(-)	(+)	(+/-)
Anticancer activity	(+)	(-)	(-)	(+/-)	(+/-)	(+)
Antimicrobial activity	(+)	(+)	(+/-)	(+/-)	(+/-)	(+/-)
Antioxidant activity	(+)	(+/-)	(-)	(-)	(+/-)	(+)
Hemolytic activity	(-)	(-)	(-)	(-)	(-)	(-)

349

350 Overall, *X. pubescens* hemolymph possessed the lowest protein concentrations, *A. mellifera*
351 hemolymph had intermediate values, and *C. siculum* hemolymph showed highest protein
352 concentrations irrespective of the solvent used for extraction. Previous studies reported intraspecific
353 variations in hemolymph protein concentration primarily correlated to the diet of bees, even among
354 bees from the same worker caste [6,35–37]. Since all our samples came from the same study site and
355 were collected on the same plants, this suggests *A. mellifera*, *X. pubescens* and *C. siculum* had
356 different diets. Bee diet varies based on various parameters [38] including the physiological states of
357 the bees themselves and the developmental stages of larvae they need to feed [39–41]. Another
358 source of variation is the impact of presence of phoretic mites on *Xylocopa* species that feeds on
359 pollen paste [42], the main source of proteins in the hemolymph of bees [43].

360 The lowest protein concentrations in *X. pubescens* were associated with the weakest
361 antioxidant and antibacterial activities against both *B. subtilis* and *E. coli*. This was also associated
362 with the weakest anti-proliferative activities among the PBS dissolved hemolymph extracts against
363 both HepG2 and HeLa cell lines. By contrast, the highest protein concentrations of *C. siculum* in both
364 solvents were associated with the strongest anti-proliferative activities among DMSO dissolved
365 hemolymph extracts against both tested cancer cell lines. This is consistent with the fact that high
366 protein concentration in the bee hemolymph is associated to high resistance to pathogens, increased
367 life span, and improved immunity [11–13]. Therefore protein concentration in hemolymph is a good
368 indicator of bee health.

369 SDS-PAGE gel analysis revealed proteomic profiling of the hemolymph extracts of the three
370 bee species in PBS or DMSO solvents. Protein bands common to the three species, with molecular
371 weight (4-5 kDa) in DMSO dissolved hemolymph were similar to cercopin, a family of small proteins
372 have been isolated from different insect hemolymph which possesses anti-bacterial properties against
373 both Gram positive and Gram negative bacteria [44,45]. Extractions in DMSO also revealed another
374 protein bands common to the three species that were detected at molecular weight (≈17 kDa) similar
375 to a group of lectins [46]. Lectin is a defense protein that can participate in many biological activities
376 such as antimicrobial, antioxidant and anticancer in arthropods. It can be also considered as natural
377 anticancer agent and contribute in immune actions [47–53]. CLIPC9 similar bands were observed at
378 (≈37 kDa) in both PBS and DMSO extracts consistent with their detection in the hemolymph of
379 *Anopheles gambiae* [54]. CLIP proteases are serine proteases found in the hemolymph of all insects
380 and participate in the innate immune responses. The protein bands with molecular weight (≈40 kDa)
381 were also found in both PBS and DMSO extracts are in the same range of lipopolysaccharide
382 recognition protein (LRP). LRP was purified from the plasma of large beetle larvae, *Holotrichia*
383 *diomphalia* with immune roles as it participates in agglutinating activities against *E. coli* and other
384 bacteria [55]. Protein bands detected at molecular weight (≈60 kDa) in PBS or DMSO extracts are
385 within the range of purified protein fractions extracted from cockroach hemolymph with potent
386 antimicrobial activities [26]. Moreover, common detected protein bands at (≈70 kDa) were similar to
387 hemocyanin, an oxygen transporter protein that possesses antioxidant, antiparasitic, antimicrobial,
388 anticancer and other biotic activities. This protein is found in most arthropods [53,56,57].

389 The variety and likely dominance of the bioactive proteins such as cercopins, lectins, CLIP
390 proteases, LRP and hemocyanin in PBS and DMSO hemolymph extracts may clarify the effective
391 biological activities of hemolymph in the current study. Generally, DMSO dissolved hemolymph
392 extracts possessed higher cytotoxic activities against HepG2 and HeLa cancer cell lines than the
393 effect of PBS extracts. Our proteomic profiling analysis revealed the presence of variations according
394 to the type of dissolved proteins in different solvents, in agreement with studies on the impact of
395 solvent on the protein structure [21,58]. According to Kramer [59] and Nugraha [21], altered solvents
396 affects the protein solubility thus may influences the hemolymph bio-activities. Hydrophobic proteins
397 such as lipoprotein complexes were used as delivery vehicles for anticancer drugs [60].

398 The fact that none of the hemolymph extracts possessed lytic activities against erythrocytes
399 agrees with results of previous study on the hemolytic activities of honey bee hemolymph [6]. These
400 results may encourage the evaluation of bee hemolymph extracts as safe and selective therapeutic
401 agents. Accordingly, bee hemolymph mixed with herbal extracts exhibited high anticancer efficiency
402 with less or no hemolytic activities [4].

403 Honey bees have innate immune mechanisms including the physical barriers and both
404 humoral and cellular actions for their defense against infections and pathogens that affects the bee
405 immune system and thus affects the bee health and the social behavior of these insects develops their
406 social immunity which reduces the stress of the individual immune response of the bees [61]. Further
407 studies are required on the immune responses of other different bee species for explaining the
408 variations in their proteomic content and biological activities

409 **5. Conclusions**

410 Our study highlights significant interspecific variability in the protein concentration and biological
411 activities of the hemolymph of three common Mediterranean bee species, likely related to variation in
412 their life history traits. Broader scale comparative studies, using similar procedures as ours, across
413 different geographical areas are now needed to investigate variations among bee species and how
414 they are related to their ecology and evolution.

415

416 **Author Contributions: MT, IB and MS:** Conceptualization and Supervision. **SE, MT, IB and MS:**
417 Methodology, Software, validation, formal analysis, investigation, resources and data curation. **SE,**
418 **MT, IB, MS and ML:** Writing—Original Draft Preparation, Writing—Review & Editing, visualization. All
419 authors have read and agreed to this version of the manuscript.

420 **Funding:** This research did not receive any specific grant from funding agencies in the public,
421 commercial, or not-for-profit sectors.

422 **Data Availability Statement:** Data available on request due to restrictions, e.g., privacy or ethical.

423 **Acknowledgments:** We would like to thank Soliman Kamel and Saied Aboud for their contribution in
424 the bee sample collection.

425 **Conflicts of Interest:** The authors declare no conflict of interest.

426

427

428 **References**

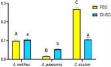
- 429 1. Michener, C.D. *The Bees of the World*; 2nd ed.; Johns Hopkins University Press: Baltimore,
430 **2007**; ISBN 978-0-8018-8573-0.
- 431 2. Kolayli, S.; Keskin, M. Natural Bee Products and Their Apitherapeutic Applications. In *Studies*
432 *in Natural Products Chemistry*; Elsevier, **2020**; Vol. 66, pp. 175–196 ISBN 978-0-12-817907-9.
- 433 3. Sojka, M.; Valachova, I.; Bucekova, M.; Majtan, J. Antibiofilm Efficacy of Honey and Bee-
434 Derived Defensin-1 on Multispecies Wound Biofilm. *J Med Microbiol* **2016**, *65*, 337–344,
435 doi:10.1099/jmm.0.000227.
- 436 4. Mokarramat-Yazdi, A.; Soltaninejad, H.; Zardini, H.; Shishehbor, F.; Alemi, A.; Fesahat, F.;
437 Sadeghian, F. Investigating the Anticancer Effect of a New Drug Originating from Plant and Animal: In
438 Vitro and in Vivo Study. *Journal of Advanced Pharmacy Education & Research* **2021**, *10*, 72–78.
- 439 5. Strachecka, A.; Kuszewska, K.; Olszewski, K.; Skowronek, P.; Grzybek, M.; Grabowski, M.;
440 Paleolog, J.; Woyciechowski, M. Activities of Antioxidant and Proteolytic Systems and Biomarkers in
441 the Fat Body and Hemolymph of Young *Apis mellifera* Females. *Animals (Basel)* **2022**, *12*, 1121,
442 doi:10.3390/ani12091121.
- 443 6. Elfar, S.A.; Bahgat, I.M.; Shebl, M.A.; Lihoreau, M.; Tawfik, M.M. Intraspecific Variability in
444 Proteomic Profiles and Biological Activities of the Honey Bee Hemolymph. *Insects* **2023**, *14*, 365,
445 doi:10.3390/insects14040365.
- 446 7. Ashrafuzzaman, M.; Razu, M.H.; Showva, N.-N.; Bondhon, T.A.; Moniruzzaman, M.; Rahman,
447 S.A.R.; Rabby, M.R.I.; Akter, F.; Khan, M. Biomolecules of the Horseshoe Crab's Hemolymph:
448 Components of an Ancient Defensive Mechanism and Its Impact on the Pharmaceutical and
449 Biomedical Industry. *Cellular Microbiology* **2022**, *2022*, e3381162, doi:10.1155/2022/3381162.
- 450 8. Rothmund, S.; Liou, Y.-C.; Davies, P.L.; Krause, E.; Sönnichsen, F.D. A New Class of
451 Hexahelical Insect Proteins Revealed as Putative Carriers of Small Hydrophobic Ligands. *Structure*
452 **1999**, *7*, 1325–1332, doi:10.1016/S0969-2126(00)80022-2.
- 453 9. Dhawan, R.; Gupta, K.; Kajla, M.; Kakani, P.; Choudhury, T.P.; Kumar, S.; Kumar, V.; Gupta,
454 L. Apolipoprotein-III Acts as a Positive Regulator of Plasmodium Development in *Anopheles stephensi*.
455 *Front. Physiol.* **2017**, *8*, doi:10.3389/fphys.2017.00185.
- 456 10. Schäfer, G.G.; Grebe, L.J.; Depoix, F.; Lieb, B. Hemocyanins of Muricidae: New 'Insights'
457 Unravel an Additional Highly Hydrophilic 800 kDa Mass Within the Molecule. *J Mol Evol* **2021**, *89*, 62–
458 72, doi:10.1007/s00239-020-09986-6.
- 459 11. Strachecka, A.J.; Olszewski, K.; Paleolog, J. Curcumin Stimulates Biochemical Mechanisms of
460 *Apis mellifera* Resistance and Extends the Apian Life-Span. *Journal of Apicultural Science* **2015**, *59*,
461 129–141, doi:10.1515/jas-2015-0014.
- 462 12. Schulz, M.; Łoś, A.; Grzybek, M.; Ścibior, R.; Strachecka, A. Piperine as a New Natural
463 Supplement with Beneficial Effects on the Life-Span and Defence System of Honeybees. *The Journal*
464 *of Agricultural Science* **2019**, *157*, 140–149, doi:10.1017/S0021859619000431.

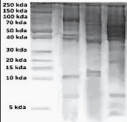
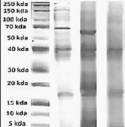
- 465 13. Skowronek, P.; Wójcik, Ł.; Strachecka, A. Cannabis Extract Has a Positive–
466 Immunostimulating Effect through Proteolytic System and Metabolic Compounds of Honey Bee (*Apis*
467 *mellifera*) Workers. *Animals* **2021**, *11*, 2190, doi:10.3390/ani11082190.
- 468 14. Barragán, S.; Basualdo, M.; Rodríguez, E.M. Conversion of Protein from Supplements into
469 Protein of Hemolymph and Fat Bodies in Worker Honey Bees (*Apis mellifera* L). *Journal of Apicultural*
470 *Research* **2015**, *54*, 399–404, doi:10.1080/00218839.2016.1158534.
- 471 15. Conroy, T.E.; Holman, L. Social Immunity in the Honey Bee: Do Immune-Challenged Workers
472 Enter Enforced or Self-Imposed Exile? *Behav Ecol Sociobiol* **2022**, *76*, 32, doi:10.1007/s00265-022-
473 03139-z.
- 474 16. Vicidomini, S. *World Bibliography on Xylocopini Tribe (Insecta: Hymenoptera: Apoidea:*
475 *Apidae: Xylocopinae): Xylocopa Latreille, 1802; Lestis Lepeletier & Serville, 1828; Proxycopa*
476 *Hedicke, 1938. Edition n.1.; 1997*; doi:10.13140/2.1.3326.8168.
- 477 17. von Reumont, B.M.; Dutertre, S.; Koludarov, I. Venom Profile of the European Carpenter Bee
478 *Xylocopa violacea*: Evolutionary and Applied Considerations on Its Toxin Components. *Toxicon: X*
479 **2022**, *14*, 100117, doi:10.1016/j.toxcx.2022.100117.
- 480 18. Kronenberg, S.; Hefetz, A. Role of Labial Glands in Nesting Behaviour of *Chalicodoma sicula*
481 (Hymenoptera; Megachilidae). *Physiological Entomology* **1984**, *9*, 175–179, doi:10.1111/j.1365-
482 3032.1984.tb00696.x.
- 483 19. Shebl, M.A.; Farag, M. Bee Diversity (Hymenoptera: Apoidea) Visiting Broad Bean (*Vicia faba*
484 L.) Flowers in Egypt. *Zoology in the Middle East* **2015**, *61*, 256–263,
485 doi:10.1080/09397140.2015.1069245.
- 486 20. Tutun, H.; SeviñN, S.; ÇetiñNtav, B. Effects of Different Chilling Procedures on Honey Bees
487 (*Apis mellifera*) for Anesthesia. *Ankara Üniversitesi Veteriner Fakültesi Dergisi* **2020**, 289–294,
488 doi:10.33988/auvfd.641831.
- 489 21. Nugraha, R.; Ruethers, T.; Johnston, E.B.; Rolland, J.M.; O’Hehir, R.E.; Kamath, S.D.; Lopata,
490 A.L. Effects of Extraction Buffer on the Solubility and Immunoreactivity of the Pacific Oyster Allergens.
491 *Foods* **2021**, *10*, 409, doi:10.3390/foods10020409.
- 492 22. Arakawa, T. Acetonitrile as Solvent for Protein Interaction Analysis. *International Journal of*
493 *Biological Macromolecules* **2018**, *114*, 728–732, doi:10.1016/j.ijbiomac.2018.03.174.
- 494 23. Pace, C.N.; Treviño, S.; Prabhakaran, E.; Scholtz, J.M. Protein Structure, Stability and
495 Solubility in Water and Other Solvents. *Philos Trans R Soc Lond B Biol Sci* **2004**, *359*, 1225–1234;
496 discussion 1234-1235, doi:10.1098/rstb.2004.1500.
- 497 24. Desjardins, P.; Hansen, J.B.; Allen, M. Microvolume Protein Concentration Determination
498 Using the NanoDrop 2000c Spectrophotometer. *J Vis Exp* **2009**, 1610, doi:10.3791/1610.
- 499 25. Laemmli, U.K. Cleavage of Structural Proteins during the Assembly of the Head of
500 Bacteriophage T4. *Nature* **1970**, *227*, 680–685, doi:10.1038/227680a0.
- 501 26. Basseri, H.R.; Dadi-Khoeni, A.; Bakhtiari, R.; Abolhassani, M.; Hajihosseini-Baghdadabadi, R.
502 Isolation and Purification of an Antibacterial Protein from Immune Induced Haemolymph of American
503 Cockroach, *Periplaneta americana*. *J Arthropod Borne Dis* **2016**, *10*, 519–527.

- 504 27. Mosmann, T. Rapid Colorimetric Assay for Cellular Growth and Survival: Application to
505 Proliferation and Cytotoxicity Assays. *Journal of Immunological Methods* **1983**, *65*, 55–63,
506 doi:10.1016/0022-1759(83)90303-4.
- 507 28. Constante, C.K.; Rodríguez, J.; Sonnenholzner, S.; Domínguez-Borbor, C. Adaptation of the
508 Methyl Thiazole Tetrazolium (MTT) Reduction Assay to Measure Cell Viability in *Vibrio* Spp.
509 *Aquaculture* **2022**, *560*, 738568, doi:10.1016/j.aquaculture.2022.738568.
- 510 29. Magaldi, S.; Mata-Essayag, S.; Hartung de Capriles, C.; Perez, C.; Colella, M.T.; Olaizola, C.;
511 Ontiveros, Y. Well Diffusion for Antifungal Susceptibility Testing. *International Journal of Infectious*
512 *Diseases* **2004**, *8*, 39–45, doi:10.1016/j.ijid.2003.03.002.
- 513 30. Espinel-Ingroff, A.; Arthington-Skaggs, B.; Iqbal, N.; Ellis, D.; Pfaller, M.A.; Messer, S.; Rinaldi,
514 M.; Fothergill, A.; Gibbs, D.L.; Wang, A. Multicenter Evaluation of a New Disk Agar Diffusion Method
515 for Susceptibility Testing of Filamentous Fungi with Voriconazole, Posaconazole, Itraconazole,
516 Amphotericin B, and Caspofungin. *J Clin Microbiol* **2007**, *45*, 1811–1820, doi:10.1128/JCM.00134-07.
- 517 31. Espinel-Ingroff, A.; Canton, E.; Fothergill, A.; Ghannoum, M.; Johnson, E.; Jones, R.N.;
518 Ostrosky-Zeichner, L.; Schell, W.; Gibbs, D.L.; Wang, A.; et al. Quality Control Guidelines for
519 Amphotericin B, Itraconazole, Posaconazole, and Voriconazole Disk Diffusion Susceptibility Tests with
520 Nonsupplemented Mueller-Hinton Agar (CLSI M51-A Document) for Nondermatophyte Filamentous
521 Fungi. *J Clin Microbiol* **2011**, *49*, 2568–2571, doi:10.1128/JCM.00393-11.
- 522 32. Braca, A.; De Tommasi, N.; Di Bari, L.; Pizza, C.; Politi, M.; Morelli, I. Antioxidant Principles
523 from *Bauhinia t arapotensis*. *J. Nat. Prod.* **2001**, *64*, 892–895, doi:10.1021/np0100845.
- 524 33. Hasan, S.M.R.; Jamila, M.; Majumder, M.M.; Akter, R.; Hossain, M.M.; Mazumder, M.E.H.;
525 Alam, M.A.; Jahangir, R.; Rana, M.S.; Arif, M.; et al. Analgesic and Antioxidant Activity of the
526 Hydromethanolic Extract of *Mikania scandens* (L.) Willd. Leaves. *American Journal of Pharmacology*
527 *and Toxicology* **2009**, *4*, 1–7, doi:10.3844/ajtpsp.2009.1.7.
- 528 34. Malagoli, D. A Full-Length Protocol to Test Hemolytic Activity of Palytoxin on Human
529 Erythrocytes. *Invertebrate Survival Journal* **2007**, *4*, 92–94.
- 530 35. El Mohandes, S.; Nafea, E.; Fawzy, A. Effect of Different Feeding Diets on the Haemolymph of
531 the Newly Emerged Honeybee Workers *Apis mellifera* L. *Egyptian Academic Journal of Biological*
532 *Sciences. A, Entomology* **2010**, *3*, 113–220, doi:10.21608/eajbsa.2010.15257.
- 533 36. Basualdo, M.; Barragán, S.; Vanagas, L.; García, C.; Solana, H.; Rodríguez, E.;
534 Bedascarrasbure, E. Conversion of High and Low Pollen Protein Diets Into Protein in Worker Honey
535 Bees (Hymenoptera: Apidae). In Proceedings of the Journal of economic entomology; **2013**.
- 536 37. Zheng, B.; Wu, Z.; Xu, B. The Effects of Dietary Protein Levels on the Population Growth,
537 Performance, and Physiology of Honey Bee Workers During Early Spring. *J Insect Sci* **2014**, *14*, 191,
538 doi:10.1093/jisesa/ieu053.
- 539 38. Wright, G.A.; Nicolson, S.W.; Shafir, S. Nutritional Physiology and Ecology of Honey Bees.
540 *Annual Review of Entomology* **2018**, *63*, 327–344, doi:10.1146/annurev-ento-020117-043423.
- 541 39. Williams, N.M. Use of Novel Pollen Species by Specialist and Generalist Solitary Bees
542 (Hymenoptera: Megachilidae). *Oecologia* **2003**, *134*, 228–237.

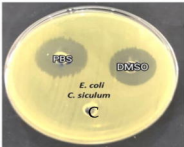
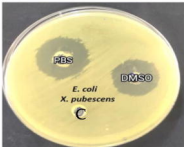
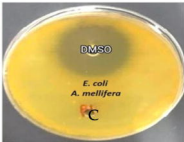
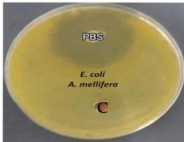
- 543 40. Sedivy, C.; Müller, A.; Dorn, S. Closely Related Pollen Generalist Bees Differ in Their Ability to
544 Develop on the Same Pollen Diet: Evidence for Physiological Adaptations to Digest Pollen. *Functional*
545 *Ecology* **2011**, *25*, 718–725, doi:10.1111/j.1365-2435.2010.01828.x.
- 546 41. Barraud, A.; Barascou, L.; Victor, L.; Sene, D.; Le Conte, Y.; Alaux, C.; Grillenzoni, F.-V.;
547 Corvucci, F.; Serra, G.; Costa, C.; et al. Variations in Nutritional Requirements Across Bee Species.
548 *Frontiers in Sustainable Food Systems* **2022**, *6*, doi:10.3389/fsufs.2022.824750.
- 549 42. Watmough, R.H. Biology and Behaviour of Carpenter Bees in Southern Africa. *Journal of the*
550 *Entomological Society of Southern Africa* **1973**, *37*, 261–281, doi:10.10520/AJA00128789_2631.
- 551 43. Frias, B.E.D.; Barbosa, C.D.; Lourenço, A.P. Pollen Nutrition in Honey Bees (*Apis mellifera*):
552 Impact on Adult Health. *Apidologie* **2016**, *47*, 15–25, doi:10.1007/s13592-015-0373-y.
- 553 44. Steiner, H.; Hultmark, D.; Engström, Å.; Bennich, H.; Boman, H.G. Sequence and Specificity
554 of Two Antibacterial Proteins Involved in Insect Immunity. *Nature* **1981**, *292*, 246–248,
555 doi:10.1038/292246a0.
- 556 45. Keppi, E.; Zachary, D.; Robertson, M.; Hoffmann, D.; Hoffmann, J.A. Induced Antibacterial
557 Proteins in the Haemolymph of *Phormia terranova* (Diptera): Purification and Possible Origin of One
558 Protein. *Insect Biochemistry* **1986**, *16*, 395–402, doi:10.1016/0020-1790(86)90053-3.
- 559 46. Viswambari Devi, R.; Basilrose, M.R.; Mercy, P.D. Prospect for Lectins in Arthropods. *Italian*
560 *Journal of Zoology* **2010**, *77*, 254–260, doi:10.1080/11250003.2010.492794.
- 561 47. Pathak, J.P.N. Haemagglutinins (Lectins) in Insects. In *Insect Immunity*; Pathak, J.P.N., Ed.;
562 Series Entomologica; Springer Netherlands: Dordrecht, **1993**; pp. 149–169 ISBN 978-94-011-1618-3.
- 563 48. Fujii, Y.; Dohmae, N.; Takio, K.; Kawsar, S.M.A.; Matsumoto, R.; Hasan, I.; Koide, Y.; Kanaly,
564 R.A.; Yasumitsu, H.; Ogawa, Y.; et al. A Lectin from the Mussel *Mytilus galloprovincialis* Has a Highly
565 Novel Primary Structure and Induces Glycan-Mediated Cytotoxicity of Globotriaosylceramide-
566 Expressing Lymphoma Cells *. *Journal of Biological Chemistry* **2012**, *287*, 44772–44783,
567 doi:10.1074/jbc.M112.418012.
- 568 49. Cheung, R.C.F.; Wong, J.H.; Pan, W.; Chan, Y.S.; Yin, C.; Dan, X.; Ng, T.B. Marine Lectins
569 and Their Medicinal Applications. *Appl Microbiol Biotechnol* **2015**, *99*, 3755–3773,
570 doi:10.1007/s00253-015-6518-0.
- 571 50. Xia, X.; You, M.; Rao, X.-J.; Yu, X.-Q. Insect C-Type Lectins in Innate Immunity. *Dev Comp*
572 *Immunol* **2018**, *83*, 70–79, doi:10.1016/j.dci.2017.11.020.
- 573 51. Pinto, I.R.; Chaves, H.V.; Vasconcelos, A.S.; de Sousa, F.C.F.; Santi-Gadelha, T.; de
574 Lacerda, J.T.J.G.; Ribeiro, K.A.; Freitas, R.S.; Maciel, L.M.; Filho, S.M.P. Antiulcer and Antioxidant
575 Activity of a Lectin from *Mucuna pruriens* Seeds on Ethanol- Induced Gastropathy: Involvement of
576 Alpha-2 Adrenoceptors and Prostaglandins. *Curr Pharm Des* **2019**, *25*, 1430–1439,
577 doi:10.2174/1381612825666190524081433.
- 578 52. Eleftherianos, I.; Zhang, W.; Heryanto, C.; Mohamed, A.; Contreras, G.; Tettamanti, G.; Wink,
579 M.; Bassal, T. Diversity of Insect Antimicrobial Peptides and Proteins - A Functional Perspective: A
580 Review. *International Journal of Biological Macromolecules* **2021**, *191*, 277–287,
581 doi:10.1016/j.ijbiomac.2021.09.082.

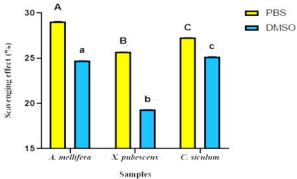
- 582 53. Zakzok, S.M.; Alkaradawe, R.M.; Mohammad, S.H.; Tawfik, M.M. Antiproliferative and
583 Antioxidant Activities of the Edible Crab *Callinectes sapidus* Hepatopancreas and Hemolymph
584 Extracts. *Egyptian Journal of Aquatic Biology and Fisheries* **2021**, *25*, 531–550,
585 doi:10.21608/ejabf.2021.179659.
- 586 54. Sousa, G.L.; Bishnoi, R.; Baxter, R.H.G.; Povelones, M. The CLIP-Domain Serine Protease
587 CLIPC9 Regulates Melanization Downstream of SPCLIP1, CLIPA8, and CLIPA28 in the Malaria
588 Vector *Anopheles gambiae*. *PLoS Pathogens* **2020**, *16*, doi:10.1371/journal.ppat.1008985.
- 589 55. Ju, J.S.; Cho, M.H.; Brade, L.; Kim, J.H.; Park, J.W.; Ha, N.-C.; Söderhäll, I.; Söderhäll, K.;
590 Brade, H.; Lee, B.L. A Novel 40-kDa Protein Containing Six Repeats of an Epidermal Growth Factor-
591 like Domain Functions as a Pattern Recognition Protein for Lipopolysaccharide. *J Immunol* **2006**, *177*,
592 1838–1845, doi:10.4049/jimmunol.177.3.1838.
- 593 56. Guo, D.; Wang, H.; Zeng, D.; Li, X.; Fan, X.; Li, Y. Vaccine Potential of Hemocyanin from
594 *Oncomelania hupensis* against *Schistosoma japonicum*. *Parasitology International* **2011**, *60*, 242–246,
595 doi:10.1016/j.parint.2011.03.005.
- 596 57. Zakzok, S.M.; El-ghany, A.G.A.; Anas, A.Y.; Dahshan, S.K.; Rashad, M.E.; Yasser, M.; Tawfik,
597 M.M. Biometric Study, Sex Ratio and Potential Biological Activities of the Edible Mantis Shrimp
598 *Erugosquilla massavensis*. *Egyptian Journal of Aquatic Biology and Fisheries* **2022**, *26*, 229–253,
599 doi:10.21608/ejabf.2022.249663.
- 600 58. Amer, M.; I. Hasaballah, A.; M. Hammad, K.; Z. I. Shehata, A.; M. Saeed, S. Antimicrobial and
601 Antiviral Activity of Maggots Extracts of *Lucilia sericata* (Diptera: Calliphoridae). *Egyptian Journal of*
602 *Aquatic Biology and Fisheries* **2019**, *23*, 51–64, doi:10.21608/ejabf.2019.52173.
- 603 59. Kramer, R.M.; Shende, V.R.; Motl, N.; Pace, C.N.; Scholtz, J.M. Toward a Molecular
604 Understanding of Protein Solubility: Increased Negative Surface Charge Correlates with Increased
605 Solubility. *Biophys J* **2012**, *102*, 1907–1915, doi:10.1016/j.bpj.2012.01.060.
- 606 60. Lacko, A.G.; Nair, M.; Paranjape, S.; Johnso, S.; McConathy, W.J. High Density Lipoprotein
607 Complexes as Delivery Vehicles for Anticancer Drugs. *Anticancer Res* **2002**, *22*, 2045–2049.
- 608 61. Larsen, A.; Reynaldi, F.J.; Guzmán-Novoa, E.; Larsen, A.; Reynaldi, F.J.; Guzmán-Novoa, E.
609 Fundamentals of the Honey Bee (*Apis mellifera*) Immune System. Review. *Revista mexicana de*
610 *ciencias pecuarias* **2019**, *10*, 705–728, doi:10.22319/rmcp.v10i3.4785.
- 611



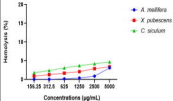
1A**M***A. nidulans* *S. pombe* *C. albicans***2B****M***A. nidulans* *S. pombe* *C. albicans*







PBS



DMSO

