



HAL
open science

Genomic prediction of blood biomarkers of metabolic disorders in Holstein cattle using parametric and nonparametric models

Lucio F. M. Mota, Diana Giannuzzi, Sara Pegolo, Enrico Sturaro, Daniel Gianola, Riccardo Negrini, Erminio Trevisi, Paolo Ajmone Marsan, Alessio Cecchinato

► To cite this version:

Lucio F. M. Mota, Diana Giannuzzi, Sara Pegolo, Enrico Sturaro, Daniel Gianola, et al.. Genomic prediction of blood biomarkers of metabolic disorders in Holstein cattle using parametric and non-parametric models. *Genetics Selection Evolution*, 2024, 56 (1), pp.31. 10.1186/s12711-024-00903-9 . hal-04568873

HAL Id: hal-04568873

<https://hal.science/hal-04568873>

Submitted on 6 May 2024

HAL is a multi-disciplinary open access archive for the deposit and dissemination of scientific research documents, whether they are published or not. The documents may come from teaching and research institutions in France or abroad, or from public or private research centers.

L'archive ouverte pluridisciplinaire **HAL**, est destinée au dépôt et à la diffusion de documents scientifiques de niveau recherche, publiés ou non, émanant des établissements d'enseignement et de recherche français ou étrangers, des laboratoires publics ou privés.

RESEARCH ARTICLE

Open Access



Genomic prediction of blood biomarkers of metabolic disorders in Holstein cattle using parametric and nonparametric models

Lucio F. M. Mota^{1*}, Diana Giannuzzi¹, Sara Pegolo^{1*} , Enrico Sturaro¹, Daniel Gianola⁴, Riccardo Negrini², Erminio Trevisi^{2,3}, Paolo Ajmone Marsan^{2,3} and Alessio Cecchinato¹

Abstract

Background Metabolic disturbances adversely impact productive and reproductive performance of dairy cattle due to changes in endocrine status and immune function, which increase the risk of disease. This may occur in the post-partum phase, but also throughout lactation, with sub-clinical symptoms. Recently, increased attention has been directed towards improved health and resilience in dairy cattle, and genomic selection (GS) could be a helpful tool for selecting animals that are more resilient to metabolic disturbances throughout lactation. Hence, we evaluated the genomic prediction of serum biomarkers levels for metabolic distress in 1353 Holsteins genotyped with the 100K single nucleotide polymorphism (SNP) chip assay. The GS was evaluated using parametric models best linear unbiased prediction (GBLUP), Bayesian B (BayesB), elastic net (ENET), and nonparametric models, gradient boosting machine (GBM) and stacking ensemble (Stack), which combines ENET and GBM approaches.

Results The results show that the Stack approach outperformed other methods with a relative difference (RD), calculated as an increment in prediction accuracy, of approximately 18.0% compared to GBLUP, 12.6% compared to BayesB, 8.7% compared to ENET, and 4.4% compared to GBM. The highest RD in prediction accuracy between other models with respect to GBLUP was observed for haptoglobin (hпто) from 17.7% for BayesB to 41.2% for Stack; for Zn from 9.8% (BayesB) to 29.3% (Stack); for ceruloplasmin (CuCp) from 9.3% (BayesB) to 27.9% (Stack); for ferric reducing antioxidant power (FRAP) from 8.0% (BayesB) to 40.0% (Stack); and for total protein (PROTt) from 5.7% (BayesB) to 22.9% (Stack). Using a subset of top SNPs (1.5k) selected from the GBM approach improved the accuracy for GBLUP from 1.8 to 76.5%. However, for the other models reductions in prediction accuracy of 4.8% for ENET (average of 10 traits), 5.9% for GBM (average of 21 traits), and 6.6% for Stack (average of 16 traits) were observed.

Conclusions Our results indicate that the Stack approach was more accurate in predicting metabolic disturbances than GBLUP, BayesB, ENET, and GBM and seemed to be competitive for predicting complex phenotypes with various degrees of mode of inheritance, i.e. additive and non-additive effects. Selecting markers based on GBM improved accuracy of GBLUP.

*Correspondence:

Lucio F. M. Mota
flaviommota.zoo@gmail.com
Sara Pegolo
sara.pegolo@unipd.it

Full list of author information is available at the end of the article



© The Author(s) 2024. **Open Access** This article is licensed under a Creative Commons Attribution 4.0 International License, which permits use, sharing, adaptation, distribution and reproduction in any medium or format, as long as you give appropriate credit to the original author(s) and the source, provide a link to the Creative Commons licence, and indicate if changes were made. The images or other third party material in this article are included in the article's Creative Commons licence, unless indicated otherwise in a credit line to the material. If material is not included in the article's Creative Commons licence and your intended use is not permitted by statutory regulation or exceeds the permitted use, you will need to obtain permission directly from the copyright holder. To view a copy of this licence, visit <http://creativecommons.org/licenses/by/4.0/>. The Creative Commons Public Domain Dedication waiver (<http://creativecommons.org/publicdomain/zero/1.0/>) applies to the data made available in this article, unless otherwise stated in a credit line to the data.

Background

Dairy cows may experience stressful periods during lactation, which are mainly caused by the high energy demands required for milk production [1, 2]. During this period, changes in metabolic and endocrine status occur, which can lead to increased lipolysis and proteolysis in support of a high milk yield [3, 4]. When metabolic stress occurs in lactating dairy cows, it triggers increased levels of haptoglobin, non-esterified fatty acids (NEFA), β -hydroxybutyrate acid (BHBA), ceruloplasmin (CuCp), and globulins in their serum and decreased levels of paraoxonase (PON), glucose, and albumin [5]. In this context, increased attention has been directed towards mitigating the harmful effects of metabolic imbalances, such as alterations in energy, immune, and hormonal states, with the aim of improving health and resilience of dairy cows [6].

Metabolic stress disturbances, such as ketosis, milk fever, and metabolic energy imbalances, are directly related to changes in the levels of NEFA, BHBA, and glucose and increase the chance of harmful effects on animal health and welfare, thus affecting farm profitability [7]. Assessing subclinical metabolic disorders through blood metabolite analyses can help to differentiate between cows that are prone to developing metabolic disorders and resilient cows. Studies of metabolic health disorders in dairy cattle that aim at selecting resilient animals and investigating responses to stressors have been recently performed [8]. Several biomarkers have been proposed for the detection of metabolic imbalance, such as metabolites associated with oxidative stress (reactive oxygen metabolites and species), energy balance (BHB, glucose, and NEFA), mineral status (calcium [Ca], sodium [Na], and magnesium [Mg]), liver function status (aspartate aminotransferase [AST], γ -glutamyl transferase [GGT], urea and albumin), and innate immunity and inflammation status (globulins, haptoglobin [hpto], myeloperoxidase, and ceruloplasmin [CuCp]) [9–11].

Traditionally, the effects of metabolic disorders have been mainly evaluated in the most critical phase of the lactation period, i.e. early lactation [12, 13]. However, recent studies have highlighted that changes in the immune and metabolic aspects of dairy cattle can occur in late lactation and in the dry-off period with subclinical forms, which can have, in turn, long-term effects on the subsequent lactation [14, 15]. In this view, serum biomarkers of inflammation, oxidative stress or hepatic overload could unveil crucial information on the health status of the cows throughout the lactation period, and deepen the knowledge on the complex mechanisms leading to post-partum metabolic imbalances. This knowledge of the critical levels for blood metabolites can help establish efficient nutrition and management strategies

for preventive control of metabolic distress. Although these practices do not guarantee the complete prevention of clinical or subclinical metabolic disorders, genetic/genomic selection may represent a complementary approach to increase resilience in dairy cattle herds.

Exploring genetic markers (i.e., single nucleotide polymorphisms—SNPs) in genomic prediction (GP) approaches as predictors of complex phenotypes for breeding purposes is of interest. SNP-based approaches can help elucidate the genetic background of traits and enhance prediction over what is possible with pedigree-based approaches (i.e., best linear unbiased prediction—BLUP) [16]. Most GP approaches assume that observed phenotypes come from the action of several loci with additive effects distributed across the whole genome and produce shrinkage of estimated effect sizes, often leading to better predictive performance [17]. However, the inheritance of blood metabolites ranges from simple to complex, i.e., from a few to many underlying quantitative trait loci (QTL) [10, 11, 18]. In addition, non-additive effects (dominance or epistasis) could affect blood metabolites, thus the statistical approaches that capture non-additive inheritance might contribute to improve GP accuracy [19, 20]. The optimal direction of selection for most blood metabolic stress biomarkers is still under discussion. Indeed, many metabolites have level thresholds, which can allow the identification of cows at risk of compromising performance and health. Although these thresholds are not yet well-defined, several studies are being conducted to establish these subclinical thresholds [21, 22]. Moreover, animals with suboptimal or critical values can be found at both the extremes of the metabolite distribution (e.g., urea and total proteins), which complicates selective breeding programs.

In recent years, various machine learning (ML) methods have been employed for GP, providing opportunities to accommodate complex genetic architectures more efficiently than parametric models using less rigid assumptions [23–25]. Several studies have noted that ML, such as random forest (RF), support vector regression (SVR), gradient boosting machine (GBM), artificial neural networks (ANN), and stacking ensemble learning, can be used for GP, and outperform parametric models (i.e., GBLUP and Bayesian regression) in situations where the reference population is small [26–29]. On the one hand, ML techniques have also been explored as a potential strategy for variable selection and then used in genomic BLUP (GBLUP) [30, 31]. On the other hand, Azodi et al. [32], with data on plants, and Bellot et al. [33], with human data, found that some ML models (e.g., deep neural networks) had a lower stability (i.e., show variation in prediction accuracy when trained on different validation designs or populations) than linear models.

To date, information on the application of GP approaches for predicting blood metabolites in dairy cows is scarce. Hence, this study was carried out to compare the predictive ability of GBLUP against Bayesian (BayesB), two machine learning approaches (GBM and stacking ensemble learning), and penalized regression via the elastic net in dairy cattle. The target phenotypes were blood metabolites related to energy, liver function and hepatic damage, oxidative stress, inflammation and innate immunity, and minerals.

Methods

Field data

The dataset comes from the BENELAT project, which aims at creating strategies and approaches to mitigate stressful factors to improve animal welfare and milk components in dairy cattle production systems [34]. Cows were fed twice daily with a ration based on corn silage and sorghum, and energy-protein supplementation was formulated following the nutritional recommendations for dairy cattle [35]. Blood samples were obtained from 1367 Holstein cows belonging to five herds in northern Italy (Emilia-Romagna and Veneto region) under a similar dairy production system. Cows were subjected to a health examination before blood sampling, and animals with clinical diseases or receiving medical treatment were excluded from the study. The animal handling procedure used followed the ARRIVE (Animal Research: Reporting of In Vivo Experiments) guidelines and was approved by the ethical committee Organismo Preposto al Benessere degli Animali (OPBA; Organization for Animal Welfare) of the Università Cattolica del Sacro Cuore (Piacenza, Italy) and by the Italian Ministry of Health (protocol number 510/2019-PR of 19/07/2019).

Blood sampling

Blood samples were collected in 21 batches (i.e., herd/date combinations): 16 batches in 2019 (1013 cows) and five batches in 2020 (354 cows). The average values (\pm standard deviation (SD)) were 33.38 ± 9.11 for daily milk yield (kg), 3.71 ± 0.88 for fat (%), and 3.43 ± 0.36 for protein (%). The cows had an average for days in milk (DIM) of 191.32 ± 110.30 and an average number of parities of 2.09 ± 1.25 . Five mL of blood from each cow were collected after the morning milking and before feeding through jugular venipuncture using vacutainer tubes containing 150 USP units of lithium heparin as anticoagulant (Vacumed; FL Medical, Torreglia, Padua, Italy). All blood samples were maintained on ice until two hours after blood sampling, followed by centrifugation at $3500 \times g$ for 1 min at 6°C (Hettich Universal 16R Centrifuge), and then the plasma samples obtained were

collected and stored at -20°C until assessment of blood metabolites.

Genomic data

In total, 1365 Holstein cows were genotyped with the Geneseek Genomic Profiler (GGP) Bovine 100 k SNP Chip assay. After removing the non-autosomal regions, we carried out genotype quality control. Autosomal SNPs with a minor allele frequency (MAF) lower than 0.05 and a significant deviation from Hardy–Weinberg equilibrium ($P \leq 10^{-5}$) were removed, as well as SNPs and samples with call rate lower than 0.95. After quality control, 1353 cows with phenotypic information and genotyped with 61,226 SNPs remained for genomic analyses. Principal component analysis (PCA) was used to assess population substructure based on the SNPs using the *ade4* R package [36], and two distinct groups were clustered using k-means clustering (see Additional file 1: Fig. S1).

Blood metabolic profile

In total, 28 blood metabolites were analyzed using a clinical autoanalyzer (ILAB 650, Instrumentation Laboratory, Lexington, MA) following the method reported by Calamari et al. [37] and Hanasand et al. [38]. A complete metabolic profile that includes energy-related metabolites (glucose, cholesterol, NEFA, BHB, urea, and creatinine), liver function/hepatic damage (AST, GGT, total bilirubin [BILt], albumin, alkaline phosphatase [ALP], and paraoxonase [PON]), oxidative stress (total reactive oxygen metabolites [ROMt]; advanced oxidation protein products [AOPP]; ferric reducing antioxidant power [FRAP]; thiol groups [SHp]), inflammation/innate immunity (CuCp, total proteins [PROTt], globulins, hapto, and myeloperoxidase), and minerals (Ca, P, Mg, Na, K, Cl and Zn). Glucose, total proteins, albumin, hapto, urea, Ca, AST, and GGT were determined using kits purchased from Instrumentation Laboratory (IL Test). Globulin concentration was estimated as the difference between total proteins and albumin. The potassium electrolyte (K^+) was assessed using the potentiometer method (ion-selective electrode coupled to ILAB 600). Zn, NEFA, BHB, and CuCp were analyzed using the methods reported by Calamari et al. [37]. The concentrations of AOPP, ROMt, FRAP, and PON were determined according to Premi et al. [39]. Descriptive statistics for the blood metabolites and the density plot for each blood metabolite are shown in Additional file 2: Table S1 and Additional file 1: Figs. S2, S3 and S4.

Genetic parameters

Genetic variance components and heritability estimates for blood metabolites were obtained with the following

single-trait animal model via the Bayesian approach with Gibbs sampling:

$$\mathbf{y} = \mathbf{Xb} + \mathbf{Wh} + \mathbf{Za} + \mathbf{e},$$

where \mathbf{y} is a vector of blood metabolite values; \mathbf{b} is the vector of fixed effects of days in milk with six levels (levels 1: less than 60 days; 2: 60–120 days; 3: 121–180 days; 4: 181–240 days; 5: 241–300 days and 6: more than 300 days) and parity in four classes (1, 2, 3, and ≥ 4 parities), with the two first principal components that explained 12.3% of the genotypic variability considered as covariables. Furthermore, \mathbf{h} is the vector of the random effects of batch; \mathbf{a} is the vector of additive genetic effects; \mathbf{X} , \mathbf{W} , and \mathbf{Z} are incidence matrices relating \mathbf{y} to fixed effects (\mathbf{b}), batch effects (\mathbf{h}), and the additive genomic breeding value (\mathbf{a}), respectively; and \mathbf{e} is the vector of random residual effects.

The model was fitted under the following assumptions for random effects: $\mathbf{a} \sim N(\mathbf{0}, \mathbf{G}\sigma_a^2)$, $\mathbf{h} \sim N(\mathbf{0}, \mathbf{I}\sigma_{\text{batch}}^2)$ and $\mathbf{e} \sim N(\mathbf{0}, \mathbf{I}\sigma_e^2)$, where σ_a^2 , σ_{batch}^2 , and σ_e^2 are variances for additive, batch and residual effects, respectively; \mathbf{I} is an identity matrix; and \mathbf{G} was obtained according to Van-

Raden [16]: $\mathbf{G} = \frac{\mathbf{MM}'}{2 \sum_{j=1}^m p_j (1-p_j)}$ where \mathbf{M} is the SNP matrix with codes 0, 1, and 2 for genotypes *AA*, *AB*, and *BB*, adjusted for allele frequency, and p_j is the frequency of the second allele of the j -th SNP. All random effects were assumed to be mutually independent. We assigned a flat prior distribution to the fixed effects and a scaled inverse chi-square distribution as prior for the random effects. Heritability (h^2) was estimated from the posterior variance components for each trait as $h^2 = \sigma_a^2 / (\sigma_a^2 + \sigma_{\text{batch}}^2 + \sigma_e^2)$, and $h_{\text{batch}}^2 = \sigma_{\text{batch}}^2 / (\sigma_a^2 + \sigma_{\text{batch}}^2 + \sigma_e^2)$ was the relative contribution of the batch to the variance.

The model was implemented using the gibbsf90+software from the blupf90 suite [40]. The Gibbs sampler comprised a chain of 500,000 cycles, with a burn-in of the first 50,000 iterations and samples stored every ten cycles. Hence, the posterior means of genetic parameters were estimated from 45,000 samples. Convergence was evaluated through visual inspection of the trace plot using the BOA package in R [41], and all traits converged (p -value > 0.10) according to the Geweke test [42].

The PREDICTf90 software [40] was used to obtain the phenotypes adjusted for the fixed and batch effects ($\mathbf{y}^* = \mathbf{y} - \mathbf{Xb} - \mathbf{Wh}$), and the adjusted phenotypes were used as the response variables in genomic predictions.

A model considering dominance and additive-by-additive epistatic effects was fitted to assess the dominance and epistatic genetic contribution for blood metabolic profiles as well, using the following model:

$$\mathbf{y} = \mathbf{Xb} + \mathbf{Wh} + \mathbf{Za} + \mathbf{Zd} + \mathbf{Zep}_{\text{aa}} + \mathbf{e},$$

where \mathbf{d} is a vector of dominance genomic effects, \mathbf{ep}_{aa} is a vector of random additive-by-additive genomic effects, the dominance matrix (\mathbf{D}) was computed according to Vitezica et al. [43] and the additive-by-additive matrix (\mathbf{GG}) was computed using Hadamard products, following the assumptions $\mathbf{d} \sim N(\mathbf{0}, \mathbf{D}\sigma_d^2)$ and $\mathbf{ep}_{\text{aa}} \sim N(\mathbf{0}, \mathbf{GG}\sigma_{\text{ep}_{\text{aa}}}^2)$ where σ_d^2 and $\sigma_{\text{ep}_{\text{aa}}}^2$ are the dominance and epistasis variance, respectively. Dominance (d^2) and additive-by-additive epistasis (ep_{aa}^2) contributions were estimated as the proportion of phenotypic variance as $d^2 = \sigma_d^2 / (\sigma_a^2 + \sigma_d^2 + \sigma_{\text{ep}_{\text{aa}}}^2 + \sigma_e^2)$ and $\text{ep}_{\text{aa}}^2 = \sigma_{\text{ep}_{\text{aa}}}^2 / (\sigma_a^2 + \sigma_d^2 + \sigma_{\text{ep}_{\text{aa}}}^2 + \sigma_e^2)$. The model was implemented using the R package BGLR version 1.09 [44], considering a Gibbs chain of 500,000 cycles, with a burn-in of the first 50,000 iterations and samples stored every ten cycles. Convergence was evaluated through visual inspection of the trace plot using the BOA package in R [41], and all traits converged (p -value > 0.15) according to the Geweke test [42].

Cross-validation scenarios

A tenfold cross-validation (CV) scheme was used for estimating the prediction accuracies of the parametric and nonparametric approaches. First, we split the dataset into ten non-overlapping folds of approximately equal size (135 or 136 cows per fold) based on the genomic distance to reduce the dependence between training and validation sets (see Additional file 1: Fig. S1a). Thus, nine folds were assigned to train the models and one to validate the model. Then, this CV procedure was repeated ten times, predicting each validation set once. In addition, a batch-out CV scenario was performed, where the data were randomly split considering 80% of batches (i.e. 16 batches) assigned as training set and 20% of batches (i.e. 5 batches) assigned as validation set. Then, this CV scenario was repeated five times, predicting each validation set once.

Genomic prediction (GP) analyses

Parametric methods

GBLUP. Genomic prediction of blood metabolites used in the single-trait model:

$$\mathbf{y}^* = \mathbf{1}\mu + \mathbf{Zg} + \mathbf{e},$$

where \mathbf{y}^* is the vector of adjusted phenotypic values for blood metabolite-related traits, $\mathbf{1}$ is a vector of ones, μ is the unknown average value, \mathbf{Z} is the incidence matrix for genomic estimated breeding values (GEBV); \mathbf{g} is a vector of random genomic values, assumed to follow a

normal distribution given by $N(\mathbf{0}, \mathbf{G}\sigma_g^2)$, where σ_g^2 is the genomic variance and \mathbf{G} is the additive genomic relationship matrix. The vector of the residual effects (\mathbf{e}) was distributed as $N(\mathbf{0}, \mathbf{I}\sigma_e^2)$, where \mathbf{I} is an identity matrix and σ_e^2 is the residual variance. The GBLUP analyses were performed using the BLUPF90 program [40].

BayesB. BayesB uses a linear model with a prior on marker effects that permits variable selection [45]. In the BayesB method, it is assumed that a known portion of the SNPs do not contribute to the genetic variation of the trait, via a mixture prior distribution, where a subset of the SNPs has a null effect (i.e., a point mass at zero) with probability π or an effect that follows a univariate t-distribution with probability $1-\pi$ [17, 45]. The BayesB model for the i th individual was $y_i^* = \mu + \sum_{w=1}^p x_{iw}u_w + e_i$, where y_i^* is the adjusted phenotype, μ is the unknown average; x_{iw} is the SNP w (coded as 0, 1, and 2) in animal i ; u_w is the (additive) effect of SNP w ($p=61,226$); and e_i is a residual effect assumed to be normally distributed as $e \sim N(\mathbf{0}, \mathbf{I}\sigma_e^2)$. A priori, the distribution of u_w is:

$$p(u_w|df, \pi, S_B) = \pi * (u_w = 0) + (1 - \pi) * t(u_w|df, S_B),$$

where π is the known prior probability of the SNP having a null effect, $1 - \pi$ is the probability of the SNP having a non-null effect, and $t(u_w|df, S_B)$ is a scaled t distribution with 5 degrees of freedom (df) and scale parameter S_B [44]. BayesB was implemented using the R package BGLR version 1.09 [44]. The analyses used a Gibbs chain of 200,000 iterations, with the first 50,000 iterations discarded as burn-in and a sampling interval of 10 cycles.

Elastic net (ENET). The elastic net is a penalized regression that combines two regularization terms: $l_1 = \sum |\beta_j|$ (least absolute shrinkage and selection operator – LASSO) and $l_2 = \sum \beta_j^2$ (RR) (ridge regression – RR) [46]. The terms l_1 and l_2 in ENET are controlled by an alpha parameter (α), providing balance between selection (LASSO) and shrinkage (RR) of the predictor variables (SNPs). ENET is considered a robust approach when predictor variables have a strong collinearity. The regression model remains the same as previously described, and optimum weight values for λ and α in the ENET are entered into the loss function as follows:

$$L(\lambda, \alpha, \beta) = \min \left[\frac{1}{2N} \sum_{i=1}^N \{y_i - (\beta_0 + \sum_{w=1}^p x_{iw}\beta_w)\}^2 + \lambda((1 - \alpha)\beta_w^2 + \alpha \sum |\beta_w|) \right],$$

where N is the number of animals, α has a value between 0 (RR penalty) and 1 (LASSO penalty), and λ is an overall regularization parameter that controls the variable shrinkage. A random grid search was performed to find

optimal values of α and λ ranging from 0.0 to 1.0 with an interval of 0.1 for each parameter. We implemented the ENET model using the h2o R package (<https://github.com/h2oai/h2o-3>). The search for α and λ was performed using the *h2o.grid* function with a cross-validation that splits the training subset into five folds for training and testing. Finally, the trained model with the highest accuracy and lowest mean square error (MSE) was applied to a disjoint validation set.

Nonparametric methods

Gradient boosting machine (GBM)

GBM is an ensemble learning technique that combines gradient-based optimization and boosting techniques with regression tree models. A loss function is minimized during the training process, applying an iterative process of ensemble weak tree learners to obtain a robust predictive model [47]. GBM performs automatic variable selection, by prioritizing the variables that contribute more to trait variability and discarding those that contain irrelevant or redundant information. GBM starts by fitting a weak model based on the distribution of the response variable; subsequently, the algorithm fits models based on residual values of the previous model. Each new model aims to reduce the prediction error from the previous model; then, the algorithm stops when no further improvements in the loss function are achieved.

The GBM model can be described as $y_i^* = \mu + \sum_{w=1}^p \phi h_m(y_i^*; \mathbf{x}) + e_i$, where y_i^* is the adjusted phenotype; μ is an overall average; $h_m(y_i^*; \mathbf{x})$ represents the m -th model built to predict the target information; ϕ is the weight parameter applied to the m -th model; \mathbf{x} is the genotype vector for the i -th animal at locus w (coded as 0, 1, and 2), and $p=61,222$; and e_i is the residual effect. We explored a random search for hyperparameters for GBM as follows: the number of trees (Ntree) was 100, 200, 300, 500, 750, 1000, 1250, 1500, 2000, 2500 and 3000; learning rate (ln_rate) ranged from 0.01 to 1 with intervals of 0.05; maximum tree depth (max_depth) ranged from 0 to 50 with intervals of 5; and the minimum number of observations per leaf (node_size) ranged from 5 to 50 with intervals of 15.

Stacking ensemble

The stacking ensemble is a meta-learning algorithm that is used to make the best combination of predictions

from multiple previously trained ML models to further enhance the accuracy of prediction [48, 49]. Stacking ensemble prediction is performed in two steps: (1) obtaining output predictions from base learners that were previously trained using a random search (GBM and ENET), and (2) producing a final prediction using a generalized linear model (GLM) and a linear combination of weights (a_1, \dots, a_n) as follows: $f_{\text{stacking}} = \sum_{i=1}^n w_i f_i(x)$, where $f_i(x)$ represents the phenotype predicted from each base learner, and w_i is the weight vector learned in the meta-learner. The stacking ensemble was performed using the *h2o.stackedEnsemble* function of the *h2o* R package.

Model performances

Prediction accuracy of the different methods was assessed by the Pearson's and Spearman's correlation ($r = \text{cor}(y_i^*, \hat{y}_i^*)$) between phenotypes adjusted for fixed effects (y_i^*) and predicted adjusted phenotype (\hat{y}_i^*) of animal i . The predictive root mean squared error (RMSE) was $\text{RMSE} = \sqrt{\sum_{i=1}^n (\hat{y}_i^* - y_i^*)^2 / n}$, where n is the number of animals in the validation set. The slope of the linear regression of y^* on \hat{y}_i^* was also used to assess prediction bias. The relative difference (RD) in prediction accuracy was measured as $\text{RD} = \frac{(r_{m1} - r_{m2})}{r_{m2}} \times 100$, where r_{m1} is the predictive ability using the other models and r_{m2} is the predictive ability using the GBLUP approach.

Feature reduction prediction

In order to evaluate the effectiveness of ML in reducing dimensionality and improving prediction accuracy, we preselected 1500 SNPs for GBM using a two-step strategy. In the first step, we selected 1.5k SNPs that were labeled as most influential in the GBM analysis, using only the training set. In the second step, these selected SNPs were used in GBLUP, GBM, and Stack to train the model and make predictions in the validation set. This approach was applied separately, for each cross-validation fold, to ensure that marker selection was not based on information from the validation set. It should be noted that we did not include preselected SNPs to fit the BayesB model because it is a variable selection method. The feature importance score for GBM was determined by calculating the relative influence of improvements in predictive ability during the tree regression building process expressed in a percentage scale [47], and SNPs were ranked by their importance score.

Results

Variance component estimates for blood metabolites

The genomic heritabilities (h^2) estimated using GBLUP ranged from 0.06 to 0.36 for energy-related metabolites, from 0.11 to 0.35 for liver function and hepatic damage indicators, from 0.09 to 0.37 for oxidative stress metabolites, from 0.06 to 0.41 for inflammation and innate immunity indicators, and from 0.12 to 0.27 for blood minerals (see Additional file 2: Tables S2 and S3). The lowest heritability estimates were for hapto (0.06 ± 0.021), NEFA (0.06 ± 0.009), FRAP (0.09 ± 0.015), BILt (0.11 ± 0.051), Na (0.12 ± 0.0717), Ca (0.14 ± 0.046), K (0.16 ± 0.0424), globulins (0.17 ± 0.053), BHB (0.17 ± 0.036), myeloperoxidase (0.18 ± 0.060) and Mg (0.19 ± 0.0625). Moderate heritability estimates were observed across a spectrum of minerals (P, Cl, and Zn), ranging from 0.21 to 0.27, and energy-related metabolites (glucose, cholesterol, urea, and creatinine), ranging from 0.28 to 0.36. Similarly, the heritability estimates ranged from 0.23 to 0.35 for function and hepatic damage markers (AST, GGT, Albumin, ALP, and PON) they ranged, from 0.21 to 0.37 for oxidative stress indicators (ROMt, AOPP, and SHp), and was equal to 0.21 ± 0.06 for PROt. The highest heritability estimate, 0.41 ± 0.062 , was found for CuCp.

Batch variances (h_{batch}^2) ranged from 0.05 to 0.49, with values higher than 30% of the total variation observed for FRAP, AOPP, BILt, K, hapto, creatinine, urea, ALP, myeloperoxidase, Zn, PON, and Na. The contribution of the epistatic variance to the phenotypic variance of blood metabolites ranged from 0.06 to 0.42 and was found to be greater than the contribution of dominance effects, which ranged from 0.06 to 0.17, except for AST, albumin, AOPP, magnesium, and potassium [see Additional file 1: Fig. S5 and Additional file 2: Table S4]. The largest contribution from epistasis was observed for hapto, FRAP, ROMt, PON, cholesterol, Zn, Na, PROt, and globulins.

Model performance

In our study, we compared the predictive ability based on model fit parameters for tenfold and batch-out CV scenarios (see Additional file 2: Tables S5 to S14). Compared to the tenfold CV, the batch-out CV reduced the dependencies among training and validation sets, which decreased the predictive ability, on average, by 12% for the energy-related metabolites, 20% for liver function and hepatic damage, 15% for oxidative stress, 10% for inflammation and innate immunity and 14% for minerals. After comparing different approaches, a similar pattern was observed between the tenfold CV and batch-out CV scenarios, for which the use of a stacking ensemble showed

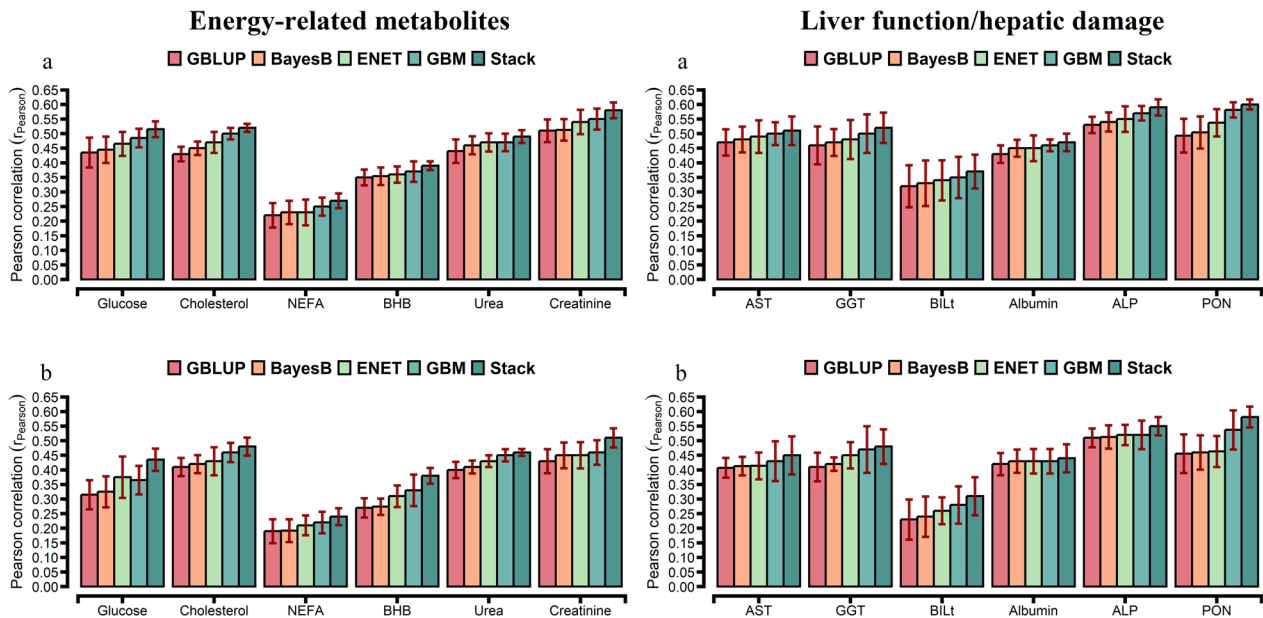


Fig. 1 Prediction accuracy assessed by Pearson **a** and Spearman **b** correlations, including standard errors, obtained from genomic BLUP (GBLUP), BayesB, elastic net (ENET), gradient boosting machine (GBM), and stacking ensemble (Stack) for energy-related metabolites and liver function/hepatic damage. For more details, see Additional file 2: Tables S5 and S6. *NEFA* non-esterified fatty acids, *BHB* β -hydroxybutyrate, *AST* aspartate aminotransferase, *GGT* γ -glutamyl transferase, *BILt* total bilirubin; *ALP* alkaline phosphatase and *PON* paraoxonase

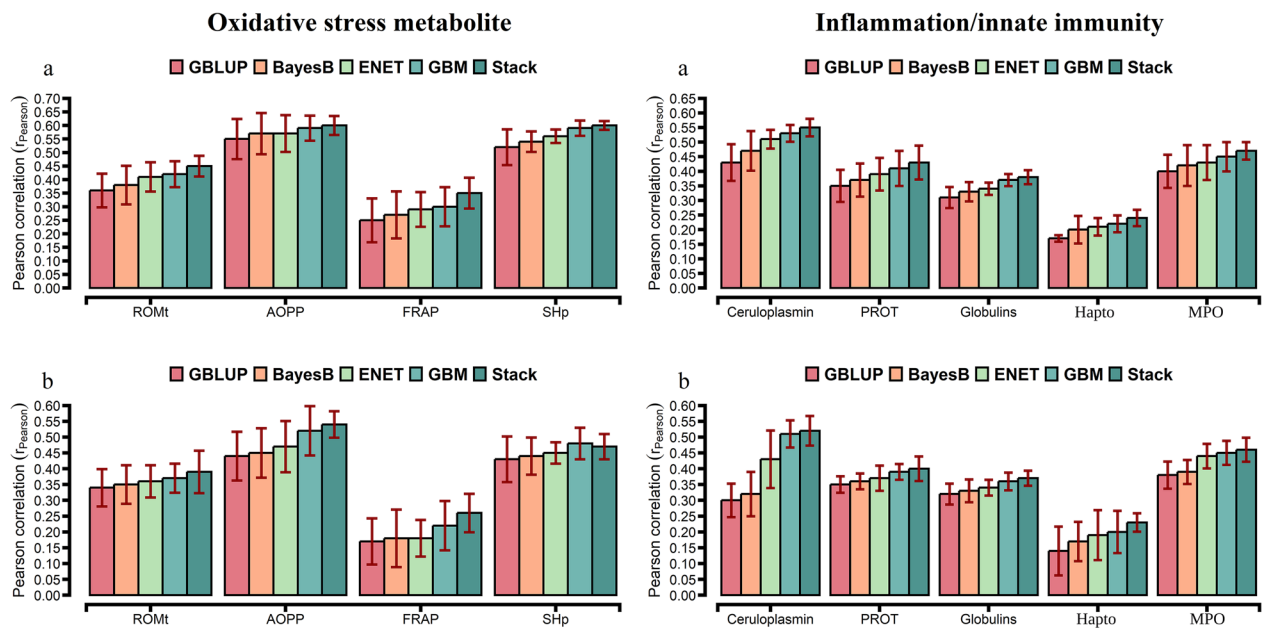


Fig. 2 Prediction accuracy assessed by Pearson **a** and Spearman **b** correlations, including standard errors, obtained from genomic BLUP (GBLUP), BayesB, elastic net (ENET), gradient boosting machine (GBM), and stacking ensemble (Stack) for oxidative stress metabolites and inflammation/innate immunity. For more details, see Additional file 2: Tables S7 and S8. *ROMt* total reactive oxygen metabolites, *AOPP* advanced oxidation protein products, *FRAP* ferric reducing antioxidant power, *SHp* thiolic groups, and *PROT* total proteins

better predictive ability. Thus, the tenfold CV was used for model comparisons.

For the comparison of prediction accuracies, we used GBLUP as the benchmark against other statistical approaches. The prediction accuracy from the tenfold CV

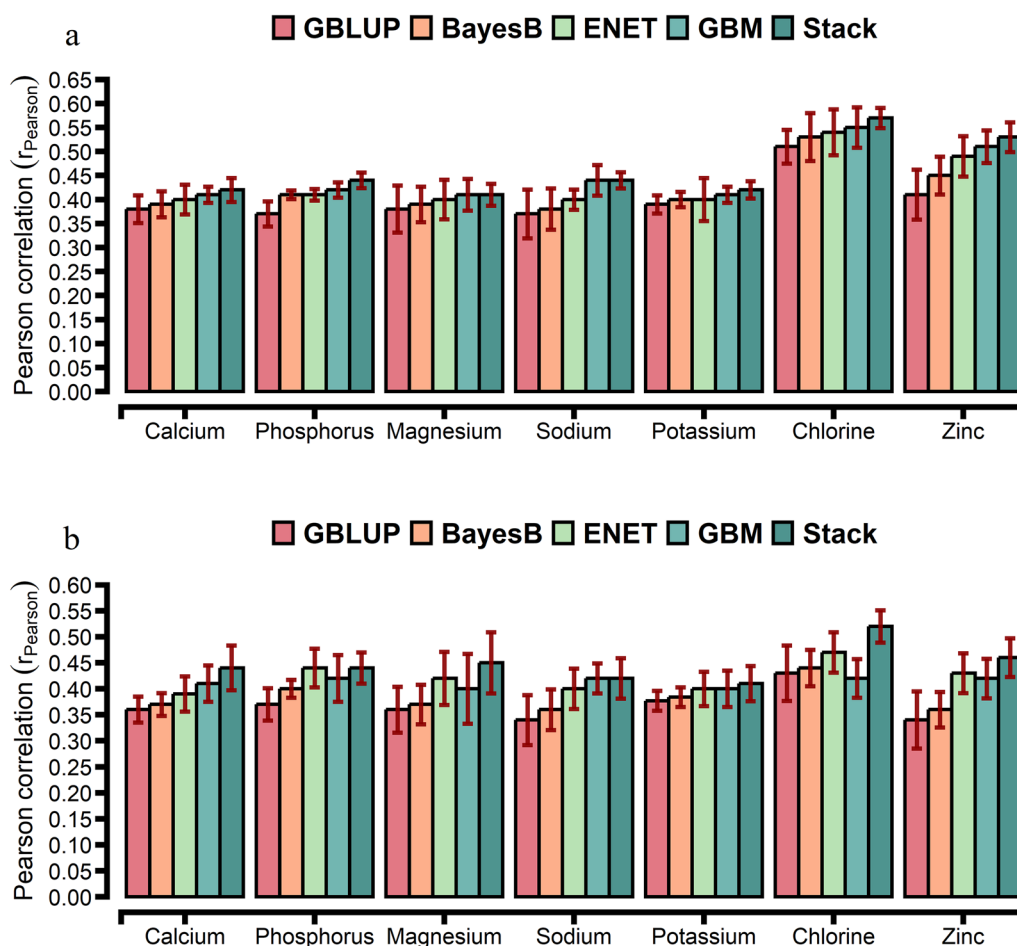


Fig. 3 Prediction accuracy assessed by Pearson (a) and Spearman (b) correlations, including standard errors, obtained from genomic BLUP (GBLUP), BayesB, elastic net (ENET), gradient boosting machine (GBM), and stacking ensemble (Stack) for blood mineral. For more details, see Additional file 2: Table S9

is shown in Figs. 1, 2, and 3. The prediction accuracy was positively correlated to the heritability of the trait for all approaches, with a higher association for ENET ($R^2=0.78$), GBM ($R^2=0.79$), and Stack ($R^2=0.80$; Fig. 4). Prediction accuracies ranged from low (hapto, NEFA, and FRAP) to high (Cl, SHp, ALP, and AOPP). On average, predictions for liver function/hepatic damage traits ($r=0.48$, ranging from 0.32 to 0.63) and for oxidative stress metabolites ($r=0.46$, ranging from 0.25 to 0.60) were more accurate than predictions for energy-related metabolites ($r=0.43$, ranging from 0.22 to 0.58), minerals ($r=0.43$, ranging from 0.37 to 0.57), and inflammation/innate immunity indicators ($r=0.38$, ranging from 0.17 to 0.55); see Figs. 1a, 2a and 3a.

GBLUP had a lower prediction accuracy than BayesB, ENET, GBM, and Stack (Figs. 1a, 2a and 3a). The Stack approach performed better than GBLUP, with accuracies ranging from 0.27 to 0.58 for energy-related metabolites, from 0.24 to 0.55 for inflammation/innate immunity,

from 0.37 to 0.63 for liver function/hepatic damage, 0.35 to 0.60 for oxidative stress metabolites and 0.41 to 0.57 for minerals (Figs. 1a, 2a and 3a). On the one hand, relative differences (RD) between GBLUP and BayesB were very small for creatinine (0.59%), BHB (1.14%), ALP (1.89%), AST (2.13%), GGT (2.17%), PON (2.24%) and glucose (2.30%; see Additional file 1: Fig. S6a). On the other hand, greater RD were observed for all methods, i.e. for hapto, ranging from 17.65% for BayesB to 41.18% for Stack; Zn, ranging from 9.76% for BayesB to 29.27% for Stack; CuCp, ranging from 9.30% for BayesB to 27.91% for Stack; FRAP, ranging from 8% for BayesB to 40% for Stack; and PROTt, ranging from 5.7% for BayesB to 22.86% for Stack [see Additional file 1: Figs. S6a, S7a, and S8a]. Prediction accuracy of BayesB was similar to that of GBLUP (for cholesterol and NEFA) and of ENET (for albumin, AOPP, NEFA, P, and K), and ENET and GBM showed similar prediction accuracy for urea (Figs. 1a, 2a and 3a).

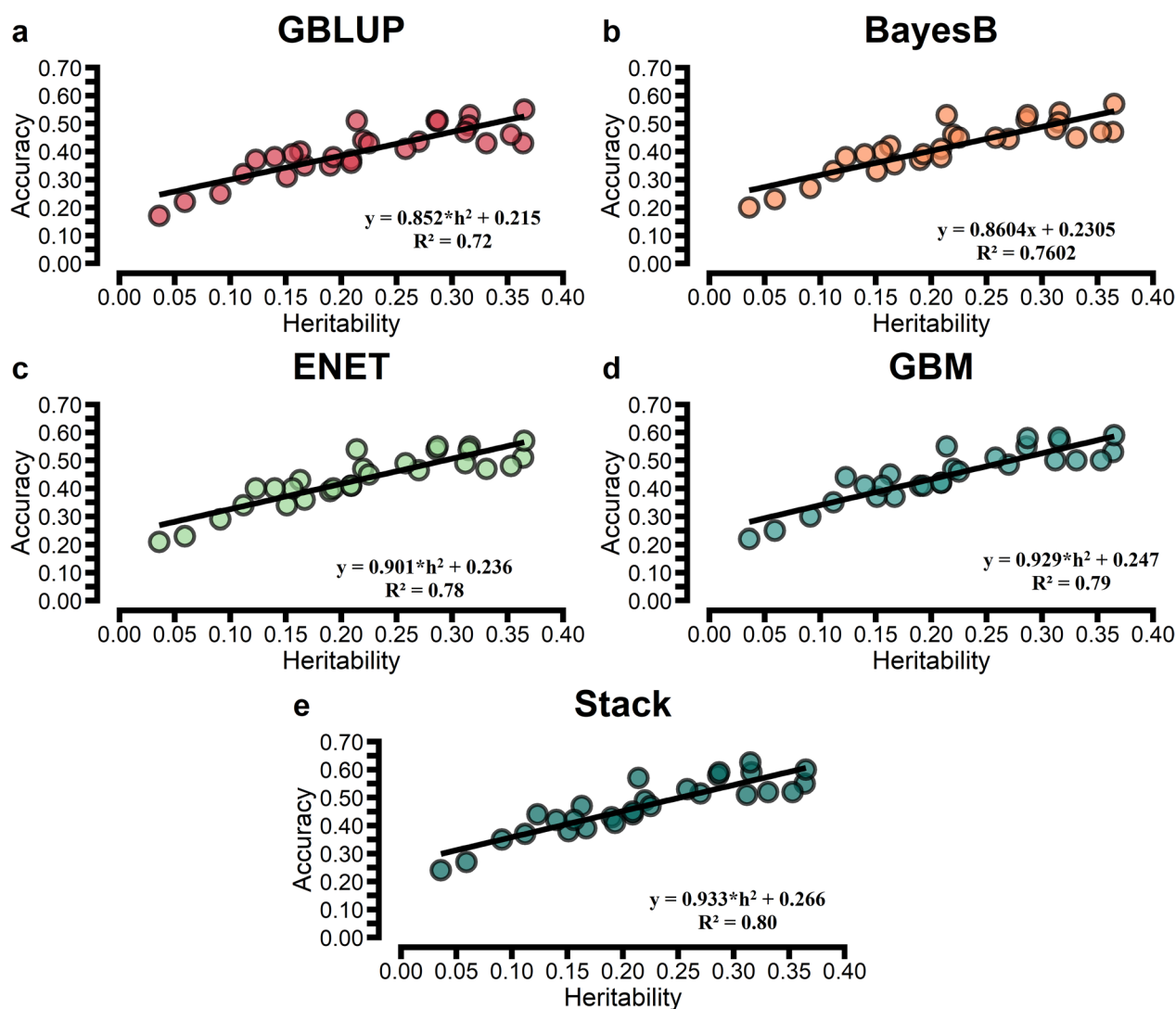


Fig. 4 Relationship between prediction accuracy obtained using tenfold cross-validation and heritability estimates for blood metabolites: *GBLUP* genomic best linear unbiased prediction (a); *BayesB* (b); *ENET* elastic net (c), *GBM* gradient boosting machine (d) and *Stack* Stacking ensemble combining predictions from EN and GBM (e)

Comparing alternative models to the GBLUP baseline model based on RD, ML approaches such as GBM and Stack increased the prediction accuracy as the non-additive effect on the trait increased (Fig. 5). A stronger association between RD and non-additive effect was observed for Stack ($R^2=0.95$), GBM ($R^2=0.88$) and ENET ($R^2=0.86$), even for traits that are polygenic, and a moderate association was observed for BayesB ($R^2=0.55$). However, when the blood phenotypes exhibited greater non-additive gene action (see Additional file 1: Fig. S5), the parametric models BayesB and ENET achieved gains in prediction accuracy over GBLUP.

The Spearman's correlation measures differences in rank order between adjusted and predicted values, with higher values for Stack (0.23–0.58) than for GBM (0.23–0.54), ENET (0.18–0.52), BayesB (0.17–0.51) and GBLUP (0.14–0.51). Concerning RMSE, Stack had the best performance for all traits, with a larger reduction in RMSE ranging from 11 to 35% for traits related to liver function/hepatic damage, oxidative stress, and minerals (see Additional file 2: Table S5, S6, S7, S8 and S9). ENET had a higher RMSE than GBLUP for glucose, cholesterol, and urea, although it had a better predictive ability (see Additional file 2: Table S5). The slope coefficients differed slightly from 1, so the predictions were empirically unbiased for the GP methods evaluated (see Additional file 2:

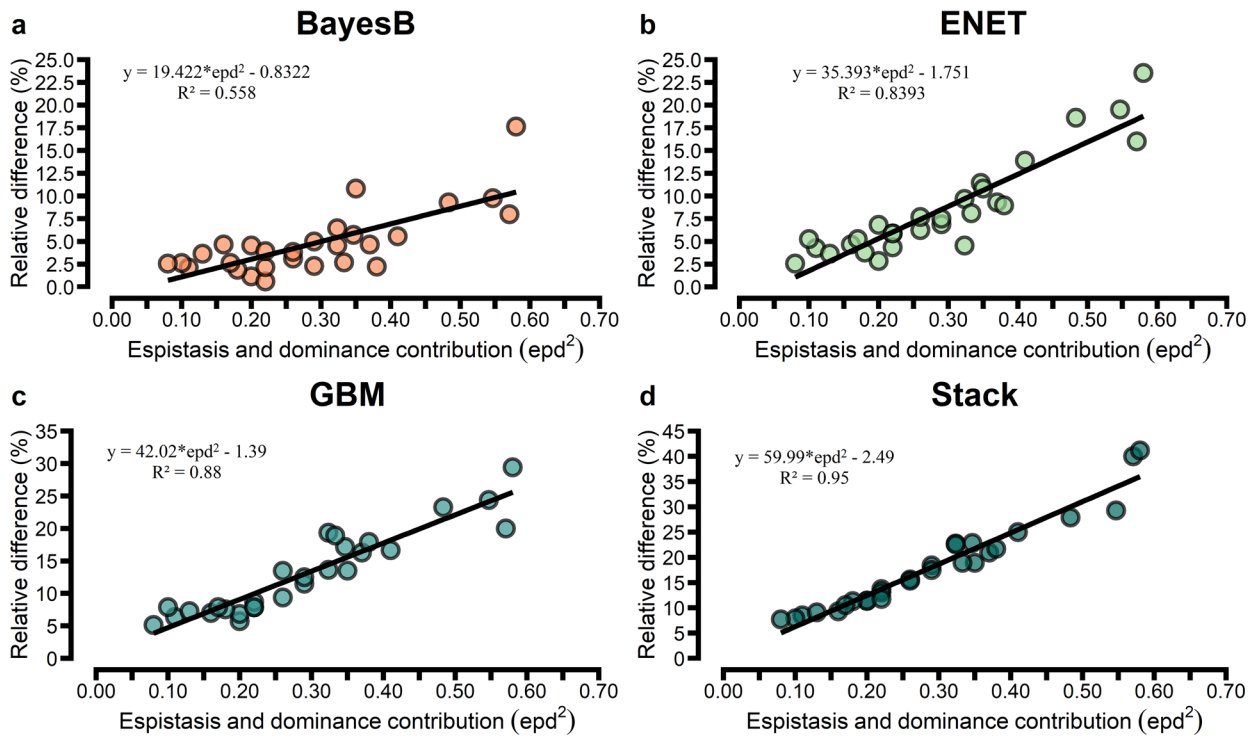


Fig. 5 Relationship between relative gain in prediction accuracy obtained using tenfold cross-validation and non-additive effect for blood metabolites assessed by Pearson's correlation for the approaches BayesB, elastic net (EN), gradient boosting machine (GBM) and stacking ensemble (Stack) against genomic best linear unbiased prediction (GBLUP)

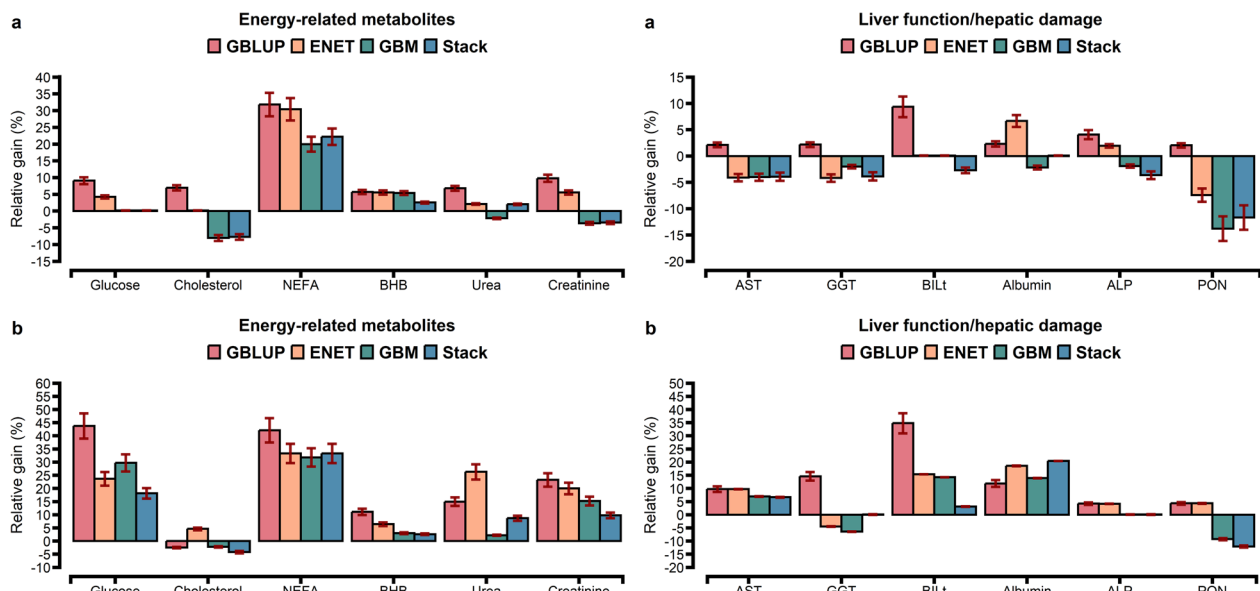


Fig. 6 Relative gain in prediction accuracy assessed by Pearson **a** and Spearman **b** correlations considering the top 1500 SNPs ranked by a GBM model against fitting all 61k SNPs, including standard errors, for the energy-related metabolites and liver function/hepatic damage traits using GBLUP, ENET, GBM, and stacking ensemble (Stack). NEFA non-esterified fatty acids, BHB β -hydroxybutyrate, AST aspartate aminotransferase, GGT γ -glutamyl transferase, BILt total bilirubin, ALP alkaline phosphatase, PON paraoxonase

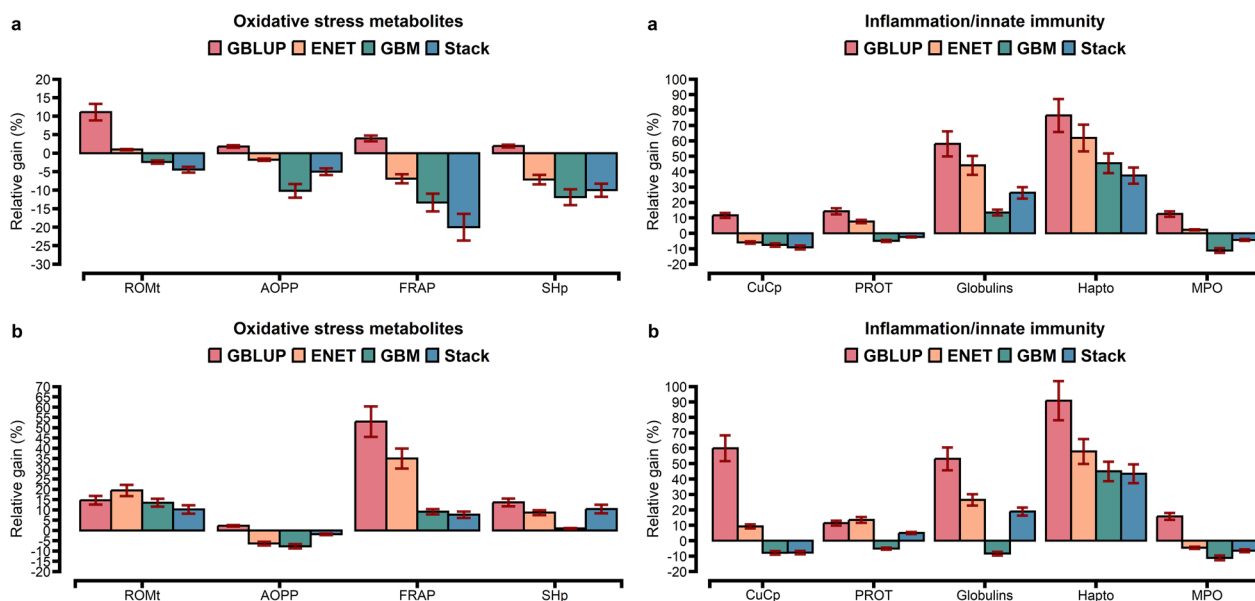


Fig. 7 Relative gain in prediction accuracy assessed by Pearson **a** and Spearman **b** correlations considering the top 1500 SNPs ranked by a GBM model against fitting all 61k SNPs, including standard errors, for oxidative stress metabolites and inflammation/innate immunity traits using GBLUP, ENET, GBM, and stacking ensemble (Stack). *ROMt* total reactive oxygen metabolites, *AOPP* advanced oxidation protein products, *FRAP* ferric reducing antioxidant power, *SHp* thiolic groups, *CuCp* ceruloplasmin, *PROT* total proteins, *Hapto* haptoglobin, *MPO* myeloperoxidase

Tables S5, S6, S7, S8 and S9). However, using a hierarchical cluster, we observed that Stack, ENET, and GBLUP were similar to each other but different from GBM and BayesB (see Additional file 1: Fig. S9).

Impact of GBM feature selection on prediction accuracy

Figures 5, 6 and 7 show the relative gain in prediction accuracy obtained by GBLUP, ENET, GBM, and Stack, considering all SNPs (~61 K) against the model fitting only the 1500 SNPs selected as most relevant from the GBM approach. The relative gain had distinct patterns depending on blood metabolite and model. Using pre-selected SNPs in the GBLUP method increased accuracy when it was assessed using Pearson’s correlation for all metabolites (Fig. 5a) while when it was assessed using Spearman’s correlation, only cholesterol showed a reduction of 2% (Fig. 5b).

Using preselected SNPs, the GBLUP approach had a relative gain, ranging from 2 to 76%, while ENET, GBM, and Stack showed a reduction in prediction accuracy for some blood metabolites (Figs. 5a, 6a, and 7a). GBLUP showed significant gains in prediction accuracy for hapto (76%), globulins (58%), and NEFA (32%), but such gains were also observed for the ENET (62%, 44%, and 30%), GBM (45%, 14%, and 20%), and Stack (38%, 26%, and 22%) models. When fitting ENET with preselected SNPs as predictors, ENET showed a similar trend to that of GBLUP i.e. an increase in prediction accuracy, except for

10 blood metabolites (PON, SHp, FRAP, Zn, CuCp, GGT, AST, Mg, P, and AOPP) for which prediction accuracy decreased. For the GBM approach, among the 28 blood metabolites evaluated, 21 exhibited a reduction in prediction accuracy (Figs. 5a, 6a, and 7a), which ranged from 14% (PON and Zn) to 2% (Mg, Ca, K, ROMt, P, Na, albumin, urea, GGT, and ALP), and the only exceptions were BILt and glucose, for which inclusion of relevant pre-selected SNPs resulted in the same prediction accuracy as when all SNPs were used (Fig. 8).

Using Spearman’s correlation, GBLUP showed higher gains in prediction accuracy than ENET, GBM, and Stack when considering the subset of SNPs, except for cholesterol, which showed a reduction of 2% (Figs. 5b, 6b and 7b). Overall, although GBLUP achieved a greater gain in prediction accuracy when using the subset of SNPs compared to all available SNPs, the Stack model remained the model with the highest prediction accuracy (see Additional file 2: Tables S15, S16, S17, S18 and S19).

Discussion

The data used in this work were from five herds, which differed in the health measures implemented, resulting in differences in the prevalence of metabolic disorders and clinical/subclinical mastitis. Although the trial did not include cows with clinical diseases, it did encompass cows with differing degrees of subclinical conditions, as determined by the proportion of individuals with deviating

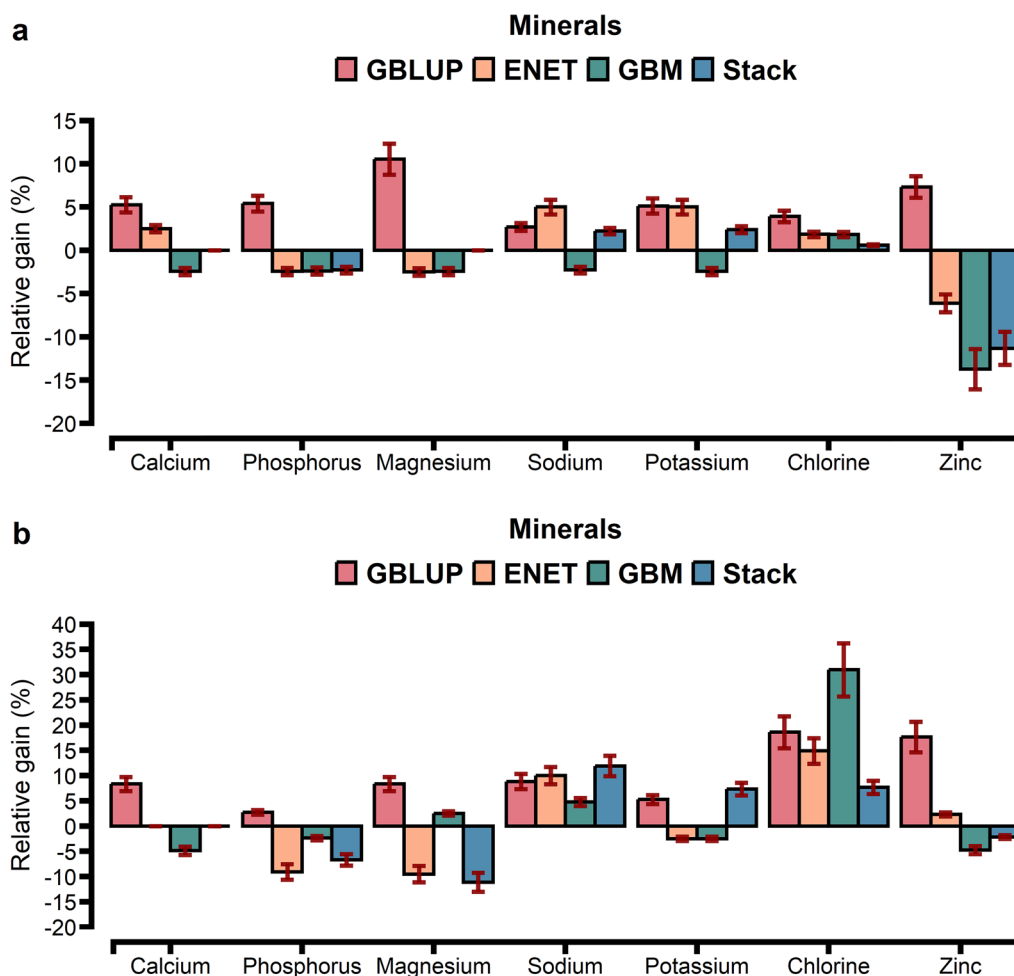


Fig. 8 Relative gain in prediction accuracy assessed by Pearson (a) and Spearman (b) correlations considering the top 1500 SNPs ranked by a GBM model against fitting all 61k SNPs, including standard errors, for blood minerals using GBLUP, ENET, GBM, and stacking ensemble (Stack)

values for blood traits such as hapto and urea (see Additional file 2: Table S1). This phenomenon, frequently observed on dairy farms, was recently examined by Gianuzzi et al. [50]. Their study demonstrated a strong connection between individual metabolic behavior and production performance, which indicated that this association is not confined to specific clinical diseases or the transition phase but extends throughout the entire lactation period.

Variance components for blood metabolites

Estimation of genetic parameters is fundamental for using the existing genetic variation to select high-performing dairy cattle with a lower susceptibility to metabolic disorders. This study estimated heritability for energy-related serum metabolites, liver function/hepatic damage, oxidative stress, inflammation/innate immunity, and minerals. Heritability estimates for some of these metabolites have previously been estimated in milk, but few studies have reported values for the serum

matrix. On the one hand, compared to the estimates of heritability reported by Luke et al. [10], those obtained in our study for serum metabolites were higher for BHB (0.09 ± 0.04), Ca (0.07 ± 0.04), and urea (0.18 ± 0.05), lower for albumin (0.27 ± 0.06) and globulin (0.46 ± 0.06) and similar for Mg (0.19 ± 0.06) and hapto with values close to zero. On the other hand, Benedet et al. [51] observed higher heritability estimates for blood infrared predicted metabolites such as BHBA, i.e. 0.21 ± 0.02 and NEFA, i.e. 0.14 ± 0.02 , while Mota et al. [20] observed a slight difference in heritability estimates for some serum metabolites.

The heritability estimates for serum minerals in this study were lower than those of Tsiamadis et al. [52]. Their study reported moderate to high heritabilities (0.20–0.43) for Ca, P, and Mg, while those for K were low to moderate (0.12–0.23). It is worth mentioning that heritability estimates can differ depending on the population, management methods, and statistical model used. Furthermore, various environmental factors, including diet and

interaction with other genetic and non-genetic factors, also play a role in the variance of blood metabolite levels. In general, availability of the heritability estimates for blood metabolites in dairy cattle can offer useful insights into the genetic basis of metabolic health and production traits. This knowledge can drive breeding strategies to enhance these traits in dairy cattle populations.

Although additive effects play a major role in blood metabolites levels, non-additive effects should not be neglected. Our findings reveal significant contributions of non-additive variance captured by SNPs in determining blood metabolites. The dominance variance contributed a further 6 to 17% to the total phenotypic variance (see Additional file 1: Fig. S5). Moreover, our study found that from 6 to 42% of the phenotypic variance could be attributed to epistatic variation depending on the serum metabolite evaluated. To our knowledge, this is the first time that non-additive genetic variance components have been reported for serum metabolites in Holstein. Differences in estimated additive genetic variance and heritability were found between models with and without non-additive effects. This may occur because the partition of non-additive effects, especially epistasis, can be translated into additive variance when allelic frequencies are low [53]. In addition, the additive variance captured from the similarities between relatives may also include a fraction of the variance generated by interaction effects [53]. This could partially explain the observed difference in additive variance between models.

Predictive performance of genomic prediction

Genomic prediction of complex traits has used mainly parametric methods. However, increased attention has recently been directed to nonlinear ML techniques. Few studies reported accuracies of GP for some of the metabolites evaluated in this study, such as BHBA, albumin, urea, globulin, Ca, and Mg [10, 11]. Overall, our results indicate low-to-medium predictive accuracies, ranging from 0.17 to 0.60 depending on the trait analyzed and statistical approach. These values are higher than those reported by Luke et al. [10], which ranged from 0.09 to 0.27, and similar to those reported by Cavani et al. [11] for Ca, which was 0.45. The performance of the evaluated methods seems to depend highly on the genetic architecture of the traits measured by the heritability, even for ML approaches (Fig. 4). This may be due to non-additive gene action in the ML (GBM and Stack) approaches, such as epistasis, which can be converted into additive genetic variance when allelic frequencies are low for complex traits under directional selection, or to similarity between relatives, which can also contain a fraction of the variance generated by interaction effects [53].

The differences observed in prediction accuracy between models stem from assumptions about the effect of SNPs on the target trait, which directly affects the model's ability to adapt to changes in phenotypic value (bias) and prediction variance (RMSE). This occurs when the assumptions of the prediction model are inappropriate for a given trait, and thus they impair its predictive ability. The assumption in GBLUP (i.e., the SNP contribution to trait variability is uniform across the whole genome) may not match the genetic architecture underlying the traits. Alternatively, BayesB, ENET, and GBM assign differential weights to SNPs, attempting to match their contributions to the variation of the target trait, whereas, Stack ensemble learning aims at improving prediction accuracy by combining heterogeneous base learners [49]. The Stack approach improved the prediction accuracy from 7.7 to 41.2% over the base learning methods (GBM and ENET). In the Stack model, the GBM approach builds a nonlinear model, whereas ENET uses a penalized linear model where some regression coefficient estimates are set to zero, thus performing variable selection [46]. Several authors have observed that combining heterogeneous base learning algorithms can give better generalization and more accurate phenotypes [9, 54] and genomic predictions [29].

We found that BayesB (differential shrinkage) performed better than GBLUP (homogeneous shrinkage). With a substantial superiority for blood metabolites, BayesB performed better than GBLUP, with an RD ranging from 1.89 to 17.65%, except for glucose and cholesterol for which the RD was only 0.59% and 1.14%, respectively. BayesB regression performs better for target traits with QTL with significant effects [55–57]. The results of genome-wide association studies have shown that several major chromosomal regions influence specific blood metabolites, leading to variability in their phenotypic expression. For instance, Nayeri et al. [58] found that most of the significant SNPs for milk BHB were located on *Bos taurus* (BTA) autosome 6, while Milanese et al. [18] identified different BTA chromosomes with significant associations for CuCp (BTA1), GGT (BTA17), and PON (BTA4, 16, and 26). In addition, Cavani et al. [11] found that the genomic region located on BTA6 explained the largest percentage of additive genetic variance for blood Ca. Thus, considering GP approaches that weigh these regions differently can improve prediction accuracy.

The gain in prediction accuracy from ENET comes from the combination of two different types of penalties to the predictor variables, thus reducing the overfitting in the training population by controlling the degree of shrinkage and imposing more flexible penalties to predictors, and shrinking coefficients to zero or close

to zero [59]. Piles et al. [30] found that feature selection approaches improved prediction accuracy. Furthermore, Azodi et al. [32] indicated that incorporating feature selection in ensemble methods increased accuracy compared to models that did not allow variable selection.

GP involves the estimation of GEBV or adjusted phenotypes based on genetic markers with the aim of extracting pattern and similarity relationships between markers and the target information. In general, the traditional approaches (i.e., GBLUP and Bayesian regression) used in GP might not adequately capture the complexity of the genetic architecture of traits (e.g., dominance and epistasis) [27, 30, 60, 61]. In this context, using the GBM approach, which does not assign prior knowledge about how genes affect traits, we observed a significant improvement in prediction accuracy over GBLUP. On average, prediction accuracy increased by 10.29% for energy-related metabolites, 9.48% for liver function and hepatic damage, 14.42% for oxidative stress metabolites, 20.33% for inflammation and innate immunity indicators, and 12.23% for minerals. These gains in predictive ability from GBM may be due to blood metabolites being affected by nonlinear relations (dominance and epistasis) between SNPs and phenotypes, which contribute to their variability (see Additional file 1: Fig. S5).

GBM is an attractive ensemble approach for handling a large number of predictors because it is a robust supervised learning algorithm that can learn complex nonlinear relationships. Compared with GBLUP, BayesB, and ENET, GBM has flexibility in capturing complex genetic architectures with additive and epistatic effects. Howard et al. [62] observed that when a trait is influenced by additive-by-additive epistasis, parametric approaches could not make accurate predictions even for traits with a high heritability, while nonparametric methods provided reasonably accurate predictions. Given that there are well-defined chromosomal regions that affect blood metabolites such as Ca [11], PON, GGT and CuCp [18] and BHBA [58, 63], statistical approaches that use differential shrinkage (ENET and BayesB) of SNP effects may have advantages over GBLUP.

GBM feature selection on prediction accuracy

Feature selection and ML learners have the power to deal with heterogeneous and large datasets, providing prediction accuracies and detecting genomic regions that impact the relationships between genotype and phenotype [30, 31]. Efficient feature selection from GBM enables the preselection of SNPs with biological relevance to the target trait. Furthermore, GBM can provide high accuracy in genomic prediction when the number of SNPs is reduced [60]. However, the performance of GBM and Stack using preselected SNPs (1.5k) was lower than

that obtained using all the SNPs (~61k) except for glucose, NEFA, BHB, urea, albumin, globulins, Hapt, Ca, P, Mg, Na, K, and Cl. However, for GBLUP, we observed an increment in prediction accuracy for all blood metabolites using the preselected SNPs, and this gain was more evident when Spearman's correlation was used. Azodi et al. [32] observed that selecting SNPs using random forest improved prediction accuracies for artificial neural networks in the context of various plant species, but its prediction accuracy was lower than for the other models evaluated. Similarly, our findings show that while GBLUP produced gains in prediction accuracy, the Stack had the highest prediction accuracy.

Li et al. [60] used three regression tree-based ensemble learning methods (random forest, GBM, and extreme gradient boosting) and observed that, when SNPs were preselected from GBM, the accuracies of GBLUP for some traits were similar to those obtained when using all the SNPs. In addition, Piles et al. [30] and Azodi et al. [32] observed that combining feature selection approaches with parametric and nonparametric models increased prediction accuracy compared to models without variable selection. In a study on the prediction of complex phenotypes in outbred mice, Perez et al. [64] observed that selecting SNPs with GBM seemed advantageous to decrease the number of predictor variables and, in some cases, improved the accuracy of parametric models. Together with applying insights from our findings, preselecting informative SNPs from the GBM approach can be a dimension reduction strategy, even when GP is performed using a parametric model (GBLUP). Further research is required to extend this alternative from a univariate to a multivariate approach for practical implementation in genomic selection breeding programs. In this study, when compared to the predictive performance of the models evaluated, the Stack approach delivered competitive results for blood metabolites (Figs. 1, 2 and 3).

Conclusions

The Stack approach exhibited better performance for genomic prediction of complex blood metabolites in Holstein cattle, specifically for traits that are affected by non-additive effects (dominance and epistasis), where it outperformed parametric models (GBLUP, BayesB, and ENET). In this context, more research should be carried out to increase the knowledge of the biology of these indicators and consequently on the selection direction (i.e., selection for increasing or decreasing the values). Preselecting SNPs from GBM seems beneficial for extracting a number of informative SNPs and improving the prediction accuracy of GBLUP compared with ENET, GBM, and Stack. However, validation of these results using a larger cohort of animals and/or different breeds and herds is needed.

Supplementary Information

The online version contains supplementary material available at <https://doi.org/10.1186/s12711-024-00903-9>.

Additional file 1: Figure S1. Principal component analysis based on SNPs (a) and genomic relationship matrix (b) for Holstein cows. Principal component analysis of animals based on the first two principal components based on SNPs to evaluate the extent of the population structure (a) and genomic relationship matrix (b) in the Holstein cows. The colors represent the tenfold used in the cross-validation of genomic breeding values. **Figure S2.** Distribution of phenotypic values for energy-related metabolites: BHBA – β -hydroxybutyric acid; Cholest – cholesterol; CREA – creatinine; GLU – Glu – glucose; NEFA – non-esterified fatty acids and urea. **Figure S3.** Distribution of phenotypic values for liver function and hepatic damage, (a) and oxidative stress (b): AOPP – advanced oxidation protein products; FRAP – ferric reducing antioxidant power; RMT – total reactive oxygen metabolites; SHp – thiol groups. **Figure S4.** Distribution of phenotypic values for inflammation/innate immunity response (a) and mineral (b). Distribution of phenotypic values for blood metabolites related to inflammation/innate immunity (a): Hapto – haptoglobin; CuCp – ceruloplasmin; GLOB – globulins; MPO – myeloperoxidase; PROTt – total protein and mineral (b): CA – calcium; CL – chlorine; K – potassium; MG – magnesium; Na – sodium; P – phosphorus and Zn – zinc.

Figure S5. Dominance (d^2), additive-by-additive epistasis (ep_{aa}^2), and dominance and epistasis (epd^2) contribution for blood metabolites variability. Dominance (d^2), additive-by-additive epistasis (ep_{aa}^2), and dominance and epistasis (epd^2) contribution for blood metabolites variability estimated as a proportion of total phenotypic variance

considered as $d^2 = \sigma_d^2 / (\sigma_a^2 + \sigma_d^2 + \sigma_{ep_{aa}}^2 + \sigma_{batch}^2 + \sigma_e^2)$,

$ep_{aa}^2 = \sigma_{ep_{aa}}^2 / (\sigma_a^2 + \sigma_d^2 + \sigma_{ep_{aa}}^2 + \sigma_{batch}^2 + \sigma_e^2)$ and

$epd^2 = (\sigma_d^2 + \sigma_{ep_{aa}}^2) / (\sigma_a^2 + \sigma_d^2 + \sigma_{ep_{aa}}^2 + \sigma_{batch}^2 + \sigma_e^2)$

where σ_a^2 , σ_d^2 , $\sigma_{ep_{aa}}^2$ and σ_e^2 represents the additive genetic variance,

dominance variance, additive-by-additive variance, and residual variance, respectively. **Figure S6.** Average of the relative difference (%) in predictive ability assessed by Pearson (a) and Spearman (b) correlations for statistical approaches against the genomic best linear unbiased prediction (GBLUP), for energy-related metabolites and liver function/hepatic damage blood metabolites in Holstein cows. Average of the relative difference (%) in predictive ability assessed by Pearson (a) and Spearman (b) correlations across 10-folds random cross-validation for the approaches BayesB, elastic net (EN), gradient boosting machine (GBM) and stacking ensemble (Stack) against the genomic best linear unbiased prediction (GBLUP), for energy-related metabolites and liver function/hepatic damage blood metabolites in Holstein cows. Data are shown as mean \pm SD (black error bar line). NEFA—non-esterified fatty acids; BHBA— β -hydroxybutyric acid; AST—aspartate aminotransferase; GGT— γ -glutamyl transferase; BILt—total bilirubin; ALP—alkaline phosphatase and PON – paraoxonase. **Figure S7.** Average of the relative difference (%) in predictive ability assessed by Pearson (a) and Spearman (b) correlations for statistical approaches against the genomic best linear unbiased prediction (GBLUP), for oxidative stress and inflammation/innate immunity response blood metabolites in Holstein cows. Average of the relative difference (%) in predictive ability assessed by Pearson (a) and Spearman (b) correlations across tenfold random cross-validation for the approaches BayesB, elastic net (EN), gradient boosting machine (GBM) and stacking ensemble (Stack) against genomic best linear unbiased prediction (GBLUP), for blood metabolites in Holstein cows. Data are shown as mean \pm SD (black error bar line).

ROMt—total reactive oxygen metabolites; AOPP—advanced oxidation protein products; FRAP—ferric reducing antioxidant power; SHp—thiol

groups; PROTt—total proteins. **Figure S8.** Average of the relative difference (%) in predictive ability assessed by Pearson (a) and Spearman (b) correlations for statistical approaches against the genomic best linear unbiased prediction (GBLUP), blood minerals in Holstein cows. Average of the relative difference (%) in predictive ability assessed by Pearson (A) and Spearman (B) correlations across tenfold random cross-validation for the approaches BayesB, elastic net (EN), gradient boosting machine (GBM) and stacking ensemble (Stack) against genomic best linear unbiased prediction (GBLUP), for blood minerals in Holstein cows. **Figure S9.** Ward's hierarchical clustering of models based on slope values for each model across all trait combinations.

Additional file 2: Table S1. Descriptive statistics for blood metabolites related to energy, liver function/hepatic damage, oxidative stress, inflammation/innate immunity, and minerals ($n = 1353$). **Table S2.** Estimates of variance components, heritability (h^2), and batch incidence (h_{batch}^2) for blood metabolites related to energy-related metabolites, liver function/hepatic damage, and oxidative stress

metabolites. **Table S3.** Estimates of variance components, heritability (h^2), and batch incidence (h_{batch}^2) for blood metabolites related to inflammation/innate immunity and minerals. **Table S4.** Estimates of

variance components considering non-additive effects, heritability (h^2), batch incidence (h_{batch}^2), dominance (d^2), and additive-by-

additive epistasis (ep_{aa}^2), for blood metabolites. **Table S5.** Prediction metrics with standard errors, obtained from genomic BLUP (GBLUP), BayesB, elastic net (ENET), gradient boosting machine (GBM), and stacking ensemble (Stack) for energy-related metabolites for tenfold cross-validation. **Table S6.** Prediction metrics with standard errors, obtained from genomic BLUP (GBLUP), BayesB, elastic net (ENET), gradient boosting machine (GBM), and stacking ensemble (Stack) for liver function/hepatic damage for tenfold cross-validation. **Table S7.** Prediction metrics with standard errors, obtained from genomic BLUP (GBLUP), BayesB, elastic net (ENET), gradient boosting machine (GBM), and stacking ensemble (Stack) for oxidative stress metabolites for tenfold cross-validation. **Table S8.** Prediction metrics with standard errors, obtained from genomic BLUP (GBLUP), BayesB, elastic net (ENET), gradient boosting machine (GBM), and stacking ensemble (Stack) for inflammation/innate immunity for tenfold cross-validation. **Table S9.** Prediction metrics with standard errors, obtained from genomic BLUP (GBLUP), BayesB, elastic net (ENET), gradient boosting machine (GBM), and stacking ensemble (Stack) for blood minerals for tenfold cross-validation. **Table S10.** Prediction metrics with standard errors, obtained from genomic BLUP (GBLUP), BayesB, elastic net (ENET), gradient boosting machine (GBM), and stacking ensemble (Stack) for energy-related metabolites for batch-out cross-validation. **Table S11.** Prediction metrics with standard errors, obtained from genomic BLUP (GBLUP), BayesB, elastic net (ENET), gradient boosting machine (GBM), and stacking ensemble (Stack) for liver function/hepatic damage for batch-out cross-validation. **Table S12.** Prediction metrics with standard errors, obtained from genomic BLUP (GBLUP), BayesB, elastic net (ENET), gradient boosting machine (GBM), and stacking ensemble (Stack) for oxidative stress metabolites for batch-out cross-validation. **Table S13.** Prediction metrics with standard errors, obtained from genomic BLUP (GBLUP), BayesB, elastic net (ENET), gradient boosting machine (GBM), and stacking ensemble (Stack) for inflammation/innate immunity for batch-out cross-validation. **Table S14.** Prediction metrics with standard errors, obtained from genomic BLUP (GBLUP), BayesB, elastic net (ENET), gradient boosting machine (GBM), and stacking ensemble (Stack) for blood minerals for batch-out cross-validation. **Table S15.** Prediction fit parameters including standard errors, considering the top 1500 SNP markers ranked by a GBM, obtained from genomic BLUP (GBLUP), Bayesian B (BayesB), elastic net (ENET), gradient boosting machine (GBM) and stacking ensemble (Stack) for energy-related metabolites. **Table S16.** Prediction fit parameters including standard errors, considering the top 1500 SNPs ranked by a GBM, obtained from genomic BLUP (GBLUP), Bayesian B (BayesB), elastic net (ENET), gradient boosting machine (GBM) and stacking ensemble (Stack) for liver function/

hepatic damage. **Table S17.** Prediction fit parameters including standard errors, considering the top 1500 SNPs ranked by a GBM, obtained from genomic BLUP (GBLUP), Bayesian B (BayesB), elastic net (ENET), gradient boosting machine (GBM) and stacking ensemble (Stack) for oxidative stress metabolites. **Table S18.** Prediction fit parameters including standard errors, considering the top 1500 SNPs ranked by a GBM, obtained from genomic BLUP (GBLUP), Bayesian B (BayesB), elastic net (ENET), gradient boosting machine (GBM) and stacking ensemble (Stack) for inflammation/innate immunity. **Table S19.** Prediction fit parameters including standard errors, considering the top 1500 SNPs ranked by a GBM, obtained from genomic BLUP (GBLUP), Bayesian B (BayesB), elastic net (ENET), gradient boosting machine (GBM) and stacking ensemble (Stack) for minerals in blood.

Acknowledgements

Not applicable.

Author contributions

AC conceived and led the coordination of the study. LFMM, AC, and SP performed the study design. LFMM contributed to the statistical analysis and the manuscript preparation. D. Gianola contributed to the interpretation of results and critically revised the manuscript, AC, LFMM, DG, SP, PAM, and ET participated in interpreting and discussing results. All authors read and approved the final manuscript.

Funding

Open access funding provided by Università degli Studi di Padova. The research was part of the projects LATSAN funded by the Ministry of Agriculture, Food Sovereignty and Forests (MASAF, Rome, Italy) and BENELAT project funded by the Lombardy region under the Rural Development Program 2014–2020 (d.d.s. 28 Marzo 2018, n. 4403). In addition, the study was carried out within the Agritech National Research Center and received funding from the European Union Next-GenerationEU (PIANO NAZIONALE DI RIPRESA E RESILIENZA (PNRR) – MISSIONE 4 COMPONENTE 2, INVESTIMENTO 1.4 – D.D. 1032 17/06/2022, CN00000022). This manuscript reflects only the authors' views and opinions, neither the European Union nor the European Commission can be considered responsible for them.

Availability of data and materials

The phenotypic and genotypic information are available for academic use from the authors upon reasonable request (contacting the researcher Alessio Cecchinato e-mail: alessio.cecchinato@unipd.it).

Declarations

Ethics approval and consent to participate

The animal procedures in this study were approved by the Organismo Preposto al Benessere Degli Animali (OPBA; Organization for Animal Welfare) of the Università Cattolica del Sacro Cuore (Piacenza, Italy) and by the Italian Ministry of Health (protocol number 510/2019-PR of 19/07/2019). The study was carried out also following ARRIVE (Animal Research: Reporting of In Vivo Experiments) guidelines.

Consent for publication

Not applicable.

Competing interests

The authors declare that they have no competing interests.

Author details

¹Department of Agronomy, Food, Natural Resources, Animals and Environment (DAFNAE), University of Padova, 35020 Legnaro, PD, Italy. ²Department of Animal Science, Food and Nutrition (DIANA) and the Romeo and Enrica Invernizzi Research Center for Sustainable Dairy Production (CREI), Faculty of Agricultural, Food, and Environmental Sciences, Università Cattolica del Sacro Cuore, 29122 Piacenza, Italy. ³Nutrigenomics and Proteomics Research Center, Università Cattolica del Sacro Cuore, 29122 Piacenza, Italy.

⁴Department of Animal and Dairy Sciences, University of Wisconsin, Madison, WI 53706, USA.

Received: 15 May 2023 Accepted: 12 April 2024

Published online: 29 April 2024

References

- Gross JJ, Bruckmaier RM. Review: Metabolic challenges in lactating dairy cows and their assessment via established and novel indicators in milk. *Animal*. 2019;13:s75–81.
- McArt JAA, Nydam DV, Oetzel GR, Overton TR, Ospina PA. Elevated non-esterified fatty acids and β -hydroxybutyrate and their association with transition dairy cow performance. *Vet J*. 2013;198:560–70.
- Zwald NR, Weigel KA, Chang YM, Welper RD, Clay JS. Genetic selection for health traits using producer-recorded data. II. genetic correlations, disease probabilities, and relationships with existing traits. *J Dairy Sci*. 2004;87:4295–302.
- Koeck A, Miglior F, Jamrozik J, Kelton DF, Schenkel FS. Genetic associations of ketosis and displaced abomasum with milk production traits in early first lactation of Canadian Holsteins. *J Dairy Sci*. 2013;96:4688–96.
- Lopreato V, Mezzetti M, Cattaneo L, Ferronato G, Minuti A, Trevisi E. Role of nutraceuticals during the transition period of dairy cows: a review. *J Anim Sci Biotechnol*. 2020;11:96.
- Boichard D, Brochard M. New phenotypes for new breeding goals in dairy cattle. *Animal*. 2012;6:544–50.
- Sundrum A. Metabolic disorders in the transition period indicate that the dairy cows' ability to adapt is overstressed. *Animals (Basel)*. 2015;5:978–1020.
- Pryce JE, Parker Gaddis KL, Koeck A, Bastin C, Abdelsayed M, Gengler N, et al. Invited review: Opportunities for genetic improvement of metabolic diseases. *J Dairy Sci*. 2016;99:6855–73.
- Giannuzzi D, Mota LFM, Pegolo S, Gallo L, Schiavon S, Tagliapietra F, et al. In-line near-infrared analysis of milk coupled with machine learning methods for the daily prediction of blood metabolic profile in dairy cattle. *Sci Rep*. 2022;12:8058.
- Luke TDW, Nguyen TTT, Rochfort S, Wales WJ, Richardson CM, Abdelsayed M, et al. Genomic prediction of serum biomarkers of health in early lactation. *J Dairy Sci*. 2019;102:11142–52.
- Cavani L, Poindexter MB, Nelson CD, Santos JEP, Peñagaricano F. Gene mapping, gene-set analysis, and genomic prediction of postpartum blood calcium in Holstein cows. *J Dairy Sci*. 2022;105:525–34.
- Putman AK, Brown JL, Gandy JC, Wisniewski L, Sordillo LM. Changes in biomarkers of nutrient metabolism, inflammation, and oxidative stress in dairy cows during the transition into the early dry period. *J Dairy Sci*. 2018;101:9350–9.
- Luke TDW, Rochfort S, Wales WJ, Bonfatti V, Maret L, Pryce JE. Metabolic profiling of early-lactation dairy cows using milk mid-infrared spectra. *J Dairy Sci*. 2019;102:1747–60.
- Caixeta LS, Omontese BO. Monitoring and improving the metabolic health of dairy cows during the transition period. *Animals (Basel)*. 2021;11:352.
- Duske K, Hammon HM, Langhof A-K, Bellmann O, Losand B, Nürnberg K, et al. Metabolism and lactation performance in dairy cows fed a diet containing rumen-protected fat during the last twelve weeks of gestation. *J Dairy Sci*. 2009;92:1670–84.
- VanRaden PM. Efficient methods to compute genomic predictions. *J Dairy Sci*. 2008;91:4414–23.
- Gianola D. Priors in whole-genome regression: the Bayesian alphabet returns. *Genetics*. 2013;194:573–96.
- Milanesi M, Passamonti MM, Cappelli K, Minuti A, Palombo V, Sgorlon S, et al. Genetic regulation of biomarkers as stress proxies in dairy cows. *Genes (Basel)*. 2021;12:534.
- Zingaretti LM, Gezan SA, Ferrão LFF, Osorio LF, Monfort A, Muñoz PR, et al. Exploring deep learning for complex trait genomic prediction in polyploid outcrossing species. *Front Plant Sci*. 2020;11:25.
- Mota LFM, Giannuzzi D, Pegolo S, Trevisi E, Ajmone-Marsan P, Cecchinato A. Integrating on-farm and genomic information improves the predictive

- ability of milk infrared prediction of blood indicators of metabolic disorders in dairy cows. *Genet Sel Evol.* 2023;55:23.
21. Martins LF, Menta PR, Fernandes L, Machado VS, Neves RC. Prolonged, low-grade inflammation in the first week of lactation: Associations with mineral, protein, and energy balance markers, and milk yield, in a clinically healthy Jersey cow cohort. *J Dairy Sci.* 2021;104:6113–23.
 22. Mezzetti M, Trevisi E. Methods of evaluating the potential success or failure of transition dairy cows. *Vet Clin North Am Food Anim Pract.* 2023;39:219–39.
 23. Nayeri S, Sargolzaei M, Tulpan D. A review of traditional and machine learning methods applied to animal breeding. *Anim Health Res Rev.* 2019;20:31–46.
 24. Yao C, Zhu X, Weigel KA. Semi-supervised learning for genomic prediction of novel traits with small reference populations: an application to residual feed intake in dairy cattle. *Genet Sel Evol.* 2016;48:84.
 25. Mota LFM, Arikawa LM, Santos SWB, Fernandes Júnior GA, Alves AAC, Rosa GJM, et al. Benchmarking machine learning and parametric methods for genomic prediction of feed efficiency-related traits in Nelore cattle. *Sci Rep.* 2024;14:6404.
 26. Wang X, Shi S, Wang G, Luo W, Wei X, Qiu A, et al. Using machine learning to improve the accuracy of genomic prediction of reproduction traits in pigs. *J Anim Sci Biotechnol.* 2022;13:60.
 27. Zhao W, Lai X, Liu D, Zhang Z, Ma P, Wang Q, et al. Applications of support vector machine in genomic prediction in pig and maize populations. *Front Genet.* 2020;11: 598318.
 28. Brito Lopes F, Magnabosco CU, Passafaro TL, Brunet LC, Costa MFO, Eifert EC, et al. Improving genomic prediction accuracy for meat tenderness in Nelore cattle using artificial neural networks. *J Anim Breed Genet.* 2020;137:438–48.
 29. Liang M, Chang T, An B, Duan X, Du L, Wang X, et al. A Stacking ensemble learning framework for genomic prediction. *Front Genet.* 2021;12:79.
 30. Piles M, Bergsma R, Gianola D, Gilbert H, Tusell L. Feature selection stability and accuracy of prediction models for genomic prediction of residual feed intake in pigs using machine learning. *Front Genet.* 2021;12: 611506.
 31. Mancin E, Mota LFM, Tulliozi B, Verdiglione R, Mantovani R, Sartori C. Improvement of genomic predictions in small breeds by construction of genomic relationship matrix through variable selection. *Front Genet.* 2022;13:1–25.
 32. Azodi CB, Bolger E, McCarren A, Roantree M, de los Campos G, Shiu S-H. Benchmarking parametric and machine learning models for genomic prediction of complex traits. *G3 (Bethesda).* 2019;9:3691–702.
 33. Bellot P, de los Campos G, Pérez-Enciso M. Can deep learning improve genomic prediction of complex human traits? *Genetics.* 2018;210:809–19.
 34. Pegolo S, Mota LFM, Bisutti V, Martinez-Castillero M, Giannuzzi D, Gallo L, et al. Genetic parameters of differential somatic cell count, milk composition, and cheese-making traits measured and predicted using spectral data in Holstein cows. *J Dairy Sci.* 2021;104:1–16.
 35. National Research Council. *Nutrient requirements of dairy cattle.* 7th ed. Washington: The National Academies Press; 2021.
 36. Dray S, Dufour AB. The ade4 package: Implementing the duality diagram for ecologists. *J Stat Softw.* 2007;22:1–20.
 37. Calamari L, Ferrari A, Minuti A, Trevisi E. Assessment of the main plasma parameters included in a metabolic profile of dairy cow based on fourier transform mid-infrared spectroscopy: preliminary results. *BMC Vet Res.* 2016;12:4.
 38. Hanasand M, Omdal R, Norheim KB, Gøransson LG, Brede C, Jonsson G. Improved detection of advanced oxidation protein products in plasma. *Clin Chim Acta.* 2012;413:901–6.
 39. Premi M, Mezzetti M, Ferronato G, Barbato M, Piccoli Cappelli F, Minuti A, et al. Changes of plasma analytes reflecting metabolic adaptation to the different stages of the lactation cycle in healthy multiparous Holstein dairy cows raised in high-welfare conditions. *Animals (Basel).* 2021;11:1714.
 40. Misztal I, Tsuruta S, Lourenco D, Aguilar I, Legarra A, Vitezica Z. *Manual for BLUPF90 family of programs.* Athens: University of Georgia; 2018.
 41. Smith BJ. *boa: an R package for MCMC output convergence assessment and posterior inference.* *J Stat Softw.* 2007;21:1–37.
 42. Geweke J. Evaluating the accuracy of sampling-based approaches to the calculation of posterior moments. In: Bernardo JM, Berger JO, Smith AP, Dawid AFM, editors. *Bayesian Statistics.* 4th ed. Oxford: Clarendon Press; 1992. p. 169–93.
 43. Vitezica ZG, Varona L, Legarra A. On the additive and dominant variance and covariance of individuals within the genomic selection scope. *Genetics.* 2013;195:1223–30.
 44. Pérez P, Campos G de los. Genome-wide regression and prediction with the BGLR statistical package. *Genetics.* 2014;198:483–95.
 45. Meuwissen THEE, Hayes BJ, Goddard ME. Prediction of total genetic value using genome-wide dense marker maps. *Genetics.* 2001;157:1819–29.
 46. Zou H, Hastie T. Regularization and variable selection via the elastic net. *J R Stat Soc Series B Stat Methodol.* 2005;67:301–20.
 47. Hastie T, Tibshirani R, Friedman J. *The elements of statistical learning.* 2nd ed. New York: Springer; 2009.
 48. Breiman L. Stacked regressions. *Mach Learn.* 1996;24:49–64.
 49. Wolpert DH. Stacked generalization. *Neural Netw.* 1992;5:241–59.
 50. Giannuzzi D, Piccioli-Cappelli F, Pegolo S, Bisutti V, Schiavon S, Gallo L, et al. Observational study on the associations between milk yield, composition and coagulation properties with blood biomarkers of health in Holstein cows. *J Dairy Sci.* 2023;107:1397–412.
 51. Benedet A, Costa A, De Marchi M, Penasa M. Heritability estimates of predicted blood β -hydroxybutyrate and nonesterified fatty acids and relationships with milk traits in early-lactation Holstein cows. *J Dairy Sci.* 2020;103:6354–63.
 52. Tsiamadis V, Banos G, Panousis N, Kritsepi-Konstantinou M, Arsenos G, Valergakis GEE. Genetic parameters of calcium, phosphorus, magnesium, and potassium serum concentrations during the first 8 days after calving in Holstein cows. *J Dairy Sci.* 2016;99:5535–44.
 53. Huang W, Mackay TFC. The genetic architecture of quantitative traits cannot be inferred from variance component analysis. *PLoS Genet.* 2016;12: e1006421.
 54. Mota LFM, Giannuzzi D, Bisutti V, Pegolo S, Trevisi E, Schiavon S, et al. Real-time milk analysis integrated with stacking ensemble learning as a tool for the daily prediction of cheese-making traits in Holstein cattle. *J Dairy Sci.* 2022;105:4237–55.
 55. Hayes BJ, Pryce J, Chamberlain AJ, Bowman PJ, Goddard ME. Genetic architecture of complex traits and accuracy of genomic prediction: coat colour, milk-fat percentage, and type in Holstein cattle as contrasting model traits. *PLoS Genet.* 2010;6: e1001139.
 56. Daetwyler HD, Pong-Wong R, Villanueva B, Woolliams JA. The impact of genetic architecture on genome-wide evaluation methods. *Genetics.* 2010;185:1021–31.
 57. Clark SA, Hickey JM, van der Werf JH. Different models of genetic variation and their effect on genomic evaluation. *Genet Sel Evol.* 2011;43:18.
 58. Nayeri S, Schenkel F, Fleming A, Kroezen V, Sargolzaei M, Baes C, et al. Genome-wide association analysis for β -hydroxybutyrate concentration in milk in Holstein dairy cattle. *BMC Genet.* 2019;20:58.
 59. Friedman J, Hastie T, Tibshirani R. Regularization paths for generalized linear models via coordinate descent. *J Stat Softw.* 2010;33:1–22.
 60. Li B, Zhang N, Wang Y-G, George AW, Reverter A, Li Y. Genomic prediction of breeding values using a subset of snps identified by three machine learning methods. *Front Genet.* 2018;9:237.
 61. Abdollahi-Arpanahi R, Gianola D, Peñagaricano F. Deep learning versus parametric and ensemble methods for genomic prediction of complex phenotypes. *Genet Sel Evol.* 2020;52:12.
 62. Howard R, Carriquiry AL, Beavis WD. Parametric and nonparametric statistical methods for genomic selection of traits with additive and epistatic genetic architectures. *G3 (Bethesda).* 2014;4:1027–46.
 63. Huang H, Cao J, Hanif Q, Wang Y, Yu Y, Zhang S, et al. Genome-wide association study identifies energy metabolism genes for resistance to ketosis in Chinese Holstein cattle. *Anim Genet.* 2019;50:376–80.
 64. Perez BC, Bink MCAM, Svenson KL, Churchill GA, Calus MPL. Prediction performance of linear models and gradient boosting machine on complex phenotypes in outbred mice. *G3 Bethesda.* 2022;12:039.

Publisher's Note

Springer Nature remains neutral with regard to jurisdictional claims in published maps and institutional affiliations.