



**HAL**  
open science

## Interactions between sediment characteristics and oxygen conditions at the sediment-water interface of reservoirs: influences on nutrient dynamics and eutrophication Authors

Florian Mermillod-Blondin, Edwige Gautreau, Lucie Pinasseau, Emma Gouze, Félix Vallier, Laurence Volatier, Géraldine Nogaro

### ► To cite this version:

Florian Mermillod-Blondin, Edwige Gautreau, Lucie Pinasseau, Emma Gouze, Félix Vallier, et al.. Interactions between sediment characteristics and oxygen conditions at the sediment-water interface of reservoirs: influences on nutrient dynamics and eutrophication Authors. *Hydrobiologia*, inPress, 10.1007/s10750-024-05508-3 . hal-04560690

**HAL Id: hal-04560690**

**<https://hal.science/hal-04560690>**

Submitted on 26 Apr 2024

**HAL** is a multi-disciplinary open access archive for the deposit and dissemination of scientific research documents, whether they are published or not. The documents may come from teaching and research institutions in France or abroad, or from public or private research centers.

L'archive ouverte pluridisciplinaire **HAL**, est destinée au dépôt et à la diffusion de documents scientifiques de niveau recherche, publiés ou non, émanant des établissements d'enseignement et de recherche français ou étrangers, des laboratoires publics ou privés.

## **Title**

Interactions between sediment characteristics and oxygen conditions at the sediment-water interface of reservoirs: influences on nutrient dynamics and eutrophication

## **Authors**

Florian Mermillod-Blondin<sup>1\*</sup>, Edwige Gautreau<sup>1,2,3</sup>, Lucie Pinasseau<sup>1</sup>, Emma Gouze<sup>3</sup>, Félix Vallier<sup>1</sup>, Laurence Volatier<sup>2</sup>, Géraldine Nogaro<sup>3</sup>

*\*Corresponding author*

Florian Mermillod-Blondin; Email: [florian.mermillod-blondin@univ-lyon1.fr](mailto:florian.mermillod-blondin@univ-lyon1.fr)

## **Affiliations and addresses**

<sup>1</sup> Université Claude Bernard Lyon 1, CNRS, ENTPE, UMR5023 LEHNA, F-69622, Villeurbanne, France

<sup>2</sup> Université Claude Bernard Lyon 1, CNRS, ENTPE, UMR5023 LEHNA, F-69518, Vaulx-en-Velin, France

<sup>3</sup> EDF R&D, Laboratoire National d'Hydraulique et Environnement (LNHE), 6 quai Watier, 78401 Chatou, France

## **Abstract**

Dissolved oxygen (DO) level at the sediment-water interface is one key factor controlling redox-sensitive processes such as nutrient cycling. Microcosm experiments with sediment collected from three reservoirs were performed to quantify the influences of water column oxygenation (oxic, anoxic, oxygen fluctuation), sediment characteristics (grain size distribution, total nitrogen and total phosphorus contents, microbial activities) and their interactions on nutrient fluxes from sediments to the water column. Algal growth bioassays were also performed using water from the microcosms to determine

which conditions produced the most favorable growth conditions. Anoxic conditions increased the release of dissolved inorganic nitrogen (DIN), mainly as ammonium and phosphates, compared to the other DO conditions. Such effects were likely due to an inhibition of the nitrification-denitrification coupling process for DIN, and a reductive dissolution of Fe (III)-oxides for phosphates. Following this increased nutrient availability, algal growth in the bioassays was the highest in water collected from microcosms exposed to anoxic conditions. Under both oxic and anoxic conditions, the percentage of fine sediment particles led to decreasing DIN and phosphates fluxes by reducing the nutrient diffusion rate from sediments to the water column. Finally, both DO and sediment grain size controlled the contribution of sediments to reservoir eutrophication.

### **Keywords**

Sediment-water interface, oxygen conditions, sediment grain size, nitrogen, phosphorus, eutrophication

### **Statements and Declarations**

Competing Interests: The authors have no competing interests to declare that are relevant to the content of this article.

Compliance with ethical standards

Ethical approval: All applicable international, national, and/or institutional guidelines for the care and use of animals were followed.

### **Data availability**

The datasets generated during and/or analyzed during the current study are available from the corresponding author on reasonable request.

### **Acknowledgments**

The authors thank the ANRT (Association Nationale Recherche Technologie) and EDF (Electricité de France) for Edwige Gautreau's Ph.D. Grant (convention bourse CIFRE- EDF: No. 0733/2016). This

study was funded by a partnership between EDF and CNRS (CNRS No. 149389) and by a Contrat Plan Etat Région (Lyon Metropole/Auvergne-Rhône-Alpes Region/French Government) within the framework of Sedaqua+ Platform (FR 3728 Biodiversité, Eau, Ville,Santé –BioEEnViS-). This work was performed within the framework of the EUR H2O’Lyon (ANR-17-EURE-0018) of Université de Lyon (UdL), within the program “Investissements d’Avenir” operated by the French National Research Agency (ANR). We also thank Athos Environnement (Antoine Thouvenot, David Foltier and Benjamin Legrand), Pierre Rossignol, Laurent Simon, Pierre Marmonier, Simon Navel, Yohan Lebon, Colin Issartel and Antoine Gosset for their support and advices during field sampling and laboratory works. The manuscript greatly benefited from insightful comments raised by two anonymous reviewers.

## Introduction

Excessive nutrient (nitrogen (N) and phosphorus (P)) loading in lakes and reservoirs classically results in the eutrophication of the water column and associated environmental problems such as the excessive growth of toxin-producing cyanobacteria, oxygen depletion of the water column or biodiversity loss (see Amorim & do Nascimento Moura, 2021 for a review). The nutrient enrichment of the water column is associated with external inputs (tributaries, soil run-off, groundwater supplies, atmospheric deposition) and sediment internal loadings (e.g., Meinikmann et al., 2015; Yang et al., 2020). Much effort has been made to reduce the external inputs of N and P to improve the water quality of eutrophic lakes and reservoirs, but this strategy is often not efficient enough when there is also sediment internal loading (Forsberg, 1989; Welch & Denniscooke, 2005; Nürnberg et al., 2012; Watson et al., 2016). For example, it has been shown for P (e.g., Søndergaard et al., 2003) and N (e.g., Jeppesen et al., 2005) that internal sources associated with a massive accumulation of nutrients in the sediments can maintain eutrophication for more than 10 years after the reduction of external inputs. Assessing the internal nutrient loading is a main issue to mitigate eutrophication problems and efficiently restore the water quality of eutrophic water bodies (e.g., Li et al., 2023).

Dissolved oxygen (DO) concentration in the water column has been recognized as the main factor influencing the dynamics of dissolved inorganic nitrogen (DIN) and P at the sediment-water interface - SWI- (Boström et al., 1988; Moore et al., 1992; Wetzel, 2001; Beutel, 2006; Ekeroth et al., 2016; Rapin et al., 2019). Oxidic/anoxic fluctuations may strongly influence N availability in the water column. For example, N-NH<sub>4</sub><sup>+</sup> produced by organic matter (OM) mineralization in sediments was nitrified into N-NO<sub>3</sub><sup>-</sup> when DO was available to microorganisms, whereas N-NH<sub>4</sub><sup>+</sup> accumulated under anoxic conditions (Gautreau et al., 2020). Therefore, fluxes of inorganic N from the sediment to the water column were expected to be dominated by N-NO<sub>3</sub><sup>-</sup> fluxes in oxic conditions and by N-NH<sub>4</sub><sup>+</sup> in anoxic conditions. Anoxic conditions do not allow nitrification and then nitrification-denitrification coupling that would favor a N loss from the ecosystem (*i.e.* transformation of NO<sub>3</sub><sup>-</sup> to gaseous N<sub>2</sub>). Consequently, anoxic conditions would limit N loss, favoring the accumulation of DIN in the water column of reservoir and lakes.

The reductive dissolution and oxidative precipitation of Fe/Mn oxyhydroxides are considered as essential to control P mobility at the oxic/anoxic interface (Rydin, 2000). Oxic conditions favor the formation of insoluble Fe(III) and Mn(IV) oxides with high  $\text{PO}_4^{3-}$  sorption capacity and limited P availability in the water column (Bortleson & Lee, 1974; Giles et al., 2016). At the opposite, the dissolution of Fe/Mn oxyhydroxides under anoxic conditions induces the release of  $\text{PO}_4^{3-}$  at the SWI (Søndergaard et al., 2003). Overall, it has been reported that Fe content largely controlled P mobility at the sediment-water interface of lakes and reservoirs (e.g., Jensen et al., 1992; Beutel et al., 2008).

Factors other than oxic-anoxic conditions at the SWI may modulate the role of internal nutrient loadings on water column eutrophication (Rapin et al., 2019). First, molecular diffusion is classically considered as the main mechanism influencing nutrient fluxes from sediments to the water column (Berner, 1980; Anschutz et al., 2012). Sediment characteristics, such as particle size distribution, that determine efficient porosity are major for diffusion rates of dissolved solutes and nutrients from sediments to the water column according to the Fick's First law (Lavery et al., 2001). Second, the contents and forms of nutrients accumulated in sediments determine their ability to be released to the water column (Ruban et al., 1999; Huang et al., 2018). For example, by comparing P release rates from sediments collected in four sites of Mona Lake, Steinman et al. (2009) showed that the sediment characterized by the highest P content produced the highest P release rates to the water column under oxic conditions. The mineralization of OM by microbial activities also contributes to the recycling of P and N accumulated under organic forms in sediments (Hupfer & Lewandowski, 2008). Therefore, both nutrient stocks and microbial activities in sediments would contribute to the production of DIN and  $\text{PO}_4^{3-}$  that could be released to the water column (Rydin, 2000; Joshi et al., 2015).

The aim of this study was to quantify the influence of DO conditions on nutrient fluxes at the SWI in interaction with sediment characteristics (e.g., grain size distribution, concentrations of total N -TN- and total P -TP-, and microbial activities). A factorial approach using three DO conditions (oxic, anoxic, daily DO fluctuations) and sediments collected from three reservoirs that varied in grain size distribution, TN content, TP content and microbial activities (Gautreau et al., 2023) was used to evaluate how sediment characteristics and DO may interact to determine fluxes of DIN and  $\text{PO}_4^{3-}$  at the SWI and

the resulting influence on algal growth. Nutrient fluxes were quantified using laboratory microcosms and their effects on algal growth were assessed using bioassays on water collected from the microcosms (as in Cymbola et al., 2008). As previously measured with one of the three reservoir sediments selected for the present study (Puyvalador sediments, Gautreau et al., 2020), anoxic conditions at the SWI were expected to increase  $\text{NH}_4^+$  and  $\text{PO}_4^{3-}$  releases in the water column in comparison with other DO conditions in all tested sediments. DIN concentrations (mainly as  $\text{NH}_4^+$ ) should be the highest under anoxic conditions because nitrification of  $\text{NH}_4^+$  into  $\text{NO}_3^-$  should be reduced/inhibited under low DO availability (Gilbert et al., 2016) compared to oxic and DO fluctuation conditions, which would favor  $\text{NO}_3^-$  releases from sediments. Under daily fluctuations of DO, nitrification was expected to start rapidly after oxygen re-introduction (Pett-Ridge et al., 2013) and denitrification should be stimulated during low oxygenated conditions, reducing the accumulation of DIN in the water column in comparison with the other treatments. Algal growth should be the highest in water collected from microcosms under anoxic conditions because this DO treatment was expected to produce the highest nutrient enrichments of the water column.

Sediment characteristics were also expected to mediate DIN and  $\text{PO}_4^{3-}$  at the SWI. First, the release of DIN and  $\text{PO}_4^{3-}$  would be higher in coarse than in fine grained sediments because the percentage of clay and silt ( $< 63\mu\text{m}$ ) would reduce the efficient porosity and then the diffusion of solutes and dissolved nutrients from sediments to water column (Huettel & Webster, 2001). Second, N content, P content, OM and associated microbial activities were expected to increase DIN and  $\text{PO}_4^{3-}$  releases in the interstitial water and subsequent releases to the water column (e.g. Kristensen, 2000; Glud, 2008). Highest DIN and  $\text{PO}_4^{3-}$  fluxes were expected from sediments characterized by the highest nutrient contents and microbial activity.

## Materials and methods

### Sediment collection and preparation

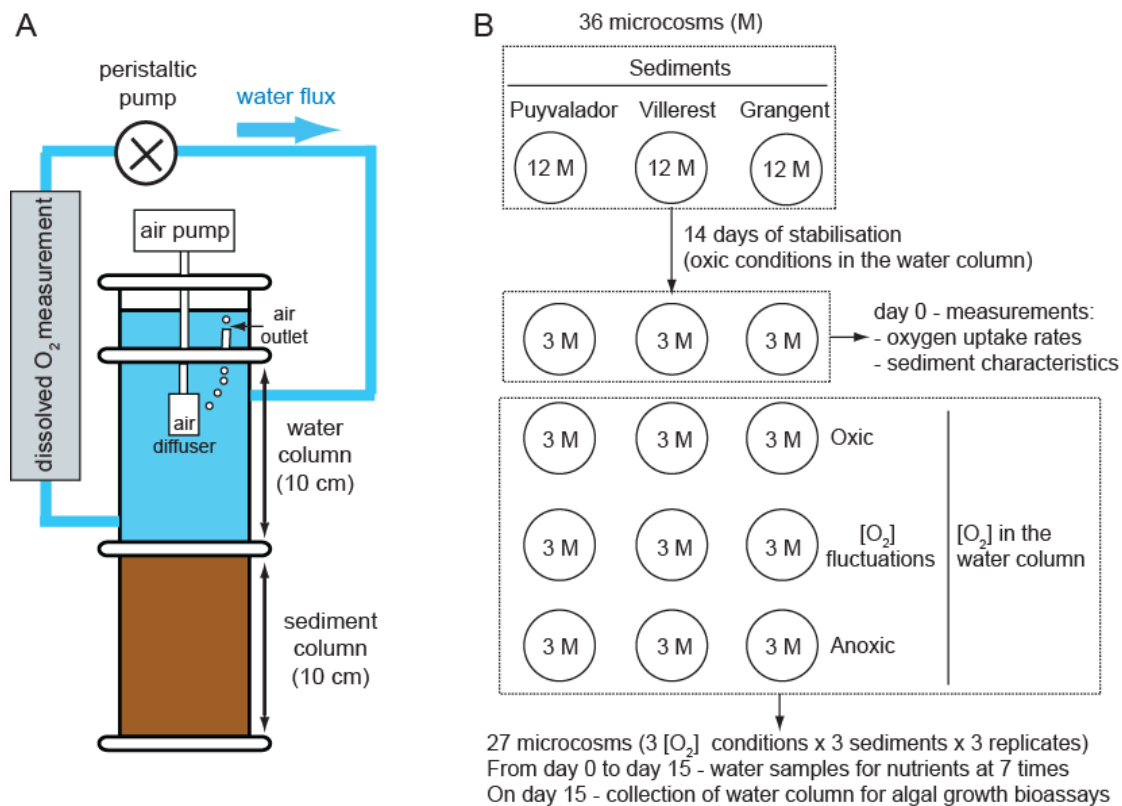
Studied sediments were collected from Puyvalador (42°38'47.4"N, 2°07'28.9"E), Villerest (45°59'07.1"N, 4°02'44.3"E) and Grangent (45°27'58.2"N, 4°14'56.5"E) reservoirs to obtain contrasted sediment grain sizes, TN contents, TP contents and microbial activities (as measured in Gautreau et al., 2023). For each reservoir, 15 L of sediments were collected with an Ekman grab and frozen (-18°C) for several weeks to kill the ambient fauna that could influence nutrient fluxes by excretion and bioturbation (e.g., Fukuhara & Sakamoto, 1987). As freezing could alter microbial communities in sediments (Tolhurst et al., 2012), a subsample of fresh sediment was kept at 15°C to preserve the microbial activity and to be used as an inoculum for the experiment. This subsample was sieved at 80 µm to remove the ambient fauna and thoroughly mixed with defrosted sediments for microbial colonization for 15 days before microcosm preparation. This incubation time of 15 days followed by a stabilization period of 14 days in microcosms (see below and Figure 1) was long enough to recover and stabilize sediment oxygen uptake rates (see fig. 4 in Gautreau et al., 2020).

### Microcosms and experimental set up

The experiment was performed in 36 microcosms consisting in Plexiglas cylinders with an internal diameter of 10 cm and a height of 20 cm (Figure 1). For each reservoir sediment, 12 microcosms were filled with a layer of sediments (10 cm) overlaid with synthetic water (10 cm) (composition of synthetic water: 96 mg.L<sup>-1</sup> NaHCO<sub>3</sub>; 39.4 mg.L<sup>-1</sup> CaSO<sub>4</sub>·2H<sub>2</sub>O; 60 mg.L<sup>-1</sup> MgSO<sub>4</sub>·7H<sub>2</sub>O; 4 mg.L<sup>-1</sup> KCl; pH = 7.5; (US EPA, 1991)) in a 15°C temperature-controlled room. Oxidic conditions were maintained in the water column by bubbling water with atmospheric air. Microcosms were equipped with peristaltic pumps for a continuous recirculation of the water column at a gentle flow rate of 6 mL.min<sup>-1</sup> to avoid DO stratification but also sediment resuspension due to a gentle flow rate. Oxygen probes were placed



on the recirculation system of peristaltic pumps to monitor DO concentrations in the water column of the microcosms (Figure 1A).



**Fig. 1** Schematic representation of one microcosm (A) and experimental design (B)

After a 14-day period of stabilization under oxic conditions, the water column of each microcosm was gently removed and renewed, with minimum disturbance of sediment, by synthetic water to eliminate the initial flush of nutrients due to sediment manipulation. At the same time, 9 microcosms (3 microcosms per reservoir sediments) were used to determine initial sediment characteristics (Figure 1B). The other 27 microcosms (9 microcosms per reservoir sediment) were used to quantify how DO concentrations and dynamics in the water column interacted with sediment characteristics to influence nutrient fluxes from the sediment to the water column. For each reservoir sediment, three DO treatments were applied in the water column of microcosms (3 microcosms per sediment, Figure 1B): 1) oxic treatment with the water column saturated in DO, 2) DO fluctuation treatment with the water column of the microcosms experiencing DO supply followed by DO decrease every 12 hours (aeration turn on and

off every 12 hours, according to Gautreau et al. 2020), and 3) anoxic treatment with a non-aerated water column experiencing anoxic conditions.

For the nine microcosms dedicated to the determination of initial conditions before the application of DO treatments (Figure 1B), incubations were performed to evaluate initial oxygen uptake rates. Afterwards, the central area of the nine microcosms were cored with cut-off syringes (i.e. 1 cm in diameter, 9 cm in height) and analyzed for measuring sediment grain size distributions, total organic carbon (TOC), total nitrogen (TN), and total phosphorus (TP) contents. As P binding in ferric (oxi)hydroxides play a key role in  $\text{PO}_4^{3-}$  dynamics in sediments (Jensen et al., 1992), iron (Fe) content was also measured for each reservoir sediment. For the 27 microcosms used to evaluate the influences of DO conditions, sediment characteristics and their interactions on nutrient dynamics, dissolved nutrient ( $\text{NH}_4^+$ ,  $\text{NO}_3^-$ ,  $\text{NO}_2^-$ , and  $\text{PO}_4^{3-}$ ) were measured at 7 times during the 15 days of the experiment: on day 0 (just before DO treatment application) and on days 3, 6, 8, 10, 13 and 15 after treatment application. At each sampling date, 30 mL of water was collected from the top of the water column, filtered through GF/F filters (0.7  $\mu\text{m}$ , Whatman) and kept at 4°C until chemical analyses. During the experiment, the sampled volume of water for analyses (30 mL) was replaced with 30 mL of synthetic water to keep a constant volume of water column in each experiment unit. To prevent the oxygenation of anoxic microcosms during sampling, the water collected from the microcosms was replaced with synthetic water without introducing air into the microcosms. On day 15, the water column from each of the 27 microcosms was collected, filtered through GF/F filters (0.7  $\mu\text{m}$ , Whatman), and kept at 4°C. This water served later as the medium for the algal growth bioassays (Figure 1B).

## Methods of analyses

### *Physical and chemical analyses on sediment samples*

Grain size distribution was determined by laser diffractometry (Malvern Mastersizer 2000G, Malvern Products) on fresh sediments obtained by coring on day 0. The percentage of fine particles (i.e. silt and clay, <63  $\mu\text{m}$ ) was calculated using package *rysgran* v2.1.0 (Ronael Gilbert et al., 2014) in R software v3.3.2. Sediment samples were dried (at 60°C for 72 hours), ground in a mortar, and analyzed to determine their TOC, TN and TP contents (in % per sediment dry mass) of TOC, TN, and TP. TOC and

TN contents were determined by high-temperature in situ combustion on pre-acidified (i.e., HCL 2 mol.L<sup>-1</sup>) dry samples using an elemental analyzer (FlashEA, Thermo Electron Corporation). The method of Murphy & Riley (1962) was used to determine TP. For each reservoir sediment, Fe content was measured per sediment dry mass by Inductively Coupled Plasma-Atomic Emission Spectroscopy (ICP-AES) after sediment mineralization with nitric acid and hydrochloric acid.

#### *Oxygen uptake rates*

Before core collections, measures of dissolved oxygen concentrations were made on the 9 microcosms (3 microcosms per sediment) used to assess sediment characteristics on day 0 of the experiment (Figure 1B). These measurements were performed to evaluate oxygen uptakes from the 3 sediments. According to Gautreau et al. (2020), aeration of the water column of the microcosms was stopped and each unit was sealed to avoid contact with the atmosphere. Using the water recirculation system equipped with an oxygen probe (Figure 1A) connected to a Pocket Oxygen Meter FireStingGO2 (Pyroscience GmbH), decrease in DO concentration was measured every hour for an incubation of 4 hours in each microcosm. DO uptake rates in the microcosms were calculated from the linear decrease of DO over time and expressed as  $\mu\text{mol}$  of O<sub>2</sub> consumed per hour and m<sup>2</sup> of water-sediment interface.

#### *Nutrient analyses on water samples and calculation of nutrient release rates*

For all filtered water samples collected at 7 times during the experiment, N-NH<sub>4</sub><sup>+</sup>, N-NO<sub>2</sub><sup>-</sup>, N-NO<sub>3</sub><sup>-</sup>, and P-PO<sub>4</sub><sup>3-</sup> concentrations were determined by standard colorimetric methods (Grasshoff et al., 1983) using a sequential analyzer (SmartChem200, AMS Alliance). Thereafter, nutrients were presented as DIN, N-NH<sub>4</sub><sup>+</sup> and N-NO<sub>3</sub><sup>-</sup> (where N-NO<sub>3</sub><sup>-</sup> corresponded to N-NO<sub>3</sub><sup>-</sup> + N-NO<sub>2</sub><sup>-</sup> because N-NO<sub>3</sub><sup>-</sup> concentrations  $\gg$  N-NO<sub>2</sub><sup>-</sup> concentrations). For each microcosm and nutrient, release rate from sediment to the water column was estimated from the changes in nutrient concentration between the start (day 0) and the end (day 15) of the experiment. Nutrient release rates (mg.day<sup>-1</sup>.m<sup>-2</sup>) were calculated using the following formula (Steinman et al., 2004):

$$\text{Nutrient release rate} = ((C_{\text{day } 15} - C_{\text{day } 0}) * V) / (A * 15)$$

where:

$C_{\text{day } 0}$  and  $C_{\text{day } 15}$  are nutrient concentrations ( $\text{mg}\cdot\text{L}^{-1}$ ) in the water column at day 0 and day 15 respectively;

V is the volume of the water column in microcosms (0.785 L);

A is the sediment surface area in the microcosms ( $0.00785 \text{ m}^2$ );

15 is the time interval in days between day 0 and day 15.

Due to an analytical problem for the measurement of  $\text{P-PO}_4^{3-}$  concentrations on day 15 in microcosms with Puyvalador sediments and experiencing anoxic conditions,  $\text{PO}_4^{3-}$  release rates were calculated for these microcosms with  $\text{PO}_4^{3-}$  concentrations measured on day 13 (i.e.,  $C_{\text{day } 15}$  was replaced by  $C_{\text{day } 13}$  and the time interval of 15 was replaced by 13 in the formula).

#### *Algal growth bioassays*

According to the approach developed by Cymbola et al. (2008), algal bioassays were performed to evaluate the ability of the filtered water collected from each microcosm on day 15 (Figure 1 B) to sustain phytoplanktonic growth. The planktonic unicellular green alga *Raphidocelis subcapitata*, formerly known as *Pseudokirchneriella subcapitata* and *Selenastrum capricornutum*, was used for these bioassays due to its higher growth rates and greater sensitivity to various substances than other algae (e.g., Prata et al., 2022). This ubiquitous freshwater planktonic species was chosen because it is readily available from culture collections and easy to maintain under laboratory-controlled conditions (e.g., Venâncio et al., 2017; Suzuki et al., 2018). *R. subcapitata* specimens were acquired from the Culture Collection of the French National Natural History Museum and maintained in batch cultures in Chu growth medium (composition of Chu #10 medium:  $40 \text{ mg}\cdot\text{L}^{-1} \text{ Ca}(\text{NO}_3)_2$ ;  $5 \text{ mg}\cdot\text{L}^{-1} \text{ K}_2\text{HPO}_4$ ;  $25 \text{ mg}\cdot\text{L}^{-1} \text{ MgSO}_4\cdot 7\text{H}_2\text{O}$ ;  $20 \text{ mg}\cdot\text{L}^{-1} \text{ Na}_2\text{CO}_3$ ;  $25 \text{ mg}\cdot\text{L}^{-1} \text{ Na}_2\text{SiO}_3$ ;  $0.8 \text{ mg}\cdot\text{L}^{-1} \text{ FeCl}_3$  (Chu, 1942; Andersen, 2005). Cultures were maintained in a temperature-controlled room at  $21^\circ\text{C}$  with artificial day/night cycle of

16h/8h ( $60 \mu\text{mol photons}^{-1}.\text{m}^{-2}.\text{s}^{-1}$ ) and were continuously agitated at a speed sufficient to prevent sedimentation and cell aggregation. Algae were sub-cultured in Chu medium weekly for several weeks with a starter culture of  $10^6 \text{ cell.mL}^{-1}$  to ensure a healthy and reproducible culture and maintain a supply of cells in the exponential growth phase.

Growth bioassays were performed in cotton-stoppered Nalgene Erlenmeyer flasks of 120 mL with 30 mL of medium and an inoculum of  $10^6 \text{ cell.mL}^{-1}$  of algae harvested in culture medium on day 5 (*i.e.* during the exponential growth phase, Moreira-Santos et al., 2004). Bioassays were performed under the same conditions (light, temperature and shaking) as cultures. A total of 30 growth tests were set up to measure the ability of surface waters collected in the 27 microcosms on day 15 (Figure 1B) to promote algal growth in comparison with 3 positive control replicates that contained Chu medium with the algae *R. subcapitata*. The aim of this test was to evaluate which experimental treatments (9 treatments: 3 sediments \* 3 oxygen conditions) could favor eutrophication in the water column. Based on preliminary tests (data not shown), a duration of 96h commonly used for this type of bioassay (e.g., Ma et al., 2006; Paquet et al., 2019; Gebara et al., 2020) was selected to observe potential differences in algal growth rates among experimental treatments. Thus, after 96h, samples were collected and fixed with glutaraldehyde (0.25% final concentration) and Pluronic® F- 68 0.01% final concentration). Algal cell concentrations were then determined by flow cytometry using an Attune NxT cytometer (ThermoFisher) equipped with an air-cooled argon laser (488 nm, 50 mW). To optimize the individual counting of algal cells, samples were diluted (1/10000) in focusing fluid and analyses were performed at low flow speed ( $12.5 \mu\text{L.min}^{-1}$ ). Algal populations were distinguished from cytometric and sample noises using light scattering (SSC) and red fluorescence from chlorophyll-a (550-735 nm, BL3). Algal concentrations measured in the water columns of microcosms were expressed in relationship with algal concentrations measured in the Chu medium used for algal cultivation to determine the significance of algal growth in the water columns compared to the culture medium. Therefore, proportions of algae concentration in the water column for each of the 27 microcosms (*i.e.*, 3 sediments \* 3 oxygen conditions \* 3 replicates) over average algae concentration in positive control medium (*i.e.* 3 replicates with Chu medium) measured after 96h of algal growth in bioassays were calculated.

## Data analysis

The initial sediment characteristics (volumetric percentages of particles  $< 63 \mu\text{m}$ , TOC, TN, TP and Fe contents, DO uptake rates) were compared among the three sediments using a 1-way ANOVAs. Tukey's post hoc tests were performed when significant ANOVA results were obtained. For chemical ( $\text{NH}_4^+$ ,  $\text{NO}_3^-$ , DIN and  $\text{PO}_4^{3-}$ ) variables measured at different times, the effects of DO and sediments were tested by 2-way RM-ANOVAs with time (days 3, 6, 10, 13 and 15) as the repeated factor and DO treatment (*i.e.*, oxic, DO fluctuation and anoxic conditions) and sediment treatment (*i.e.* Puyvalador, Villerest and Grangent sediments) as the fixed factors. For nutrient release rates, we performed 2-way ANOVA with DO treatment and sediment treatment as the fixed factors. Tukey's post hoc tests were performed when significant ANOVA results were obtained. For all variables and before statistical analyses, the normality and homoscedasticity of the residues were verified using the Shapiro-Wilk's test and the Bartlett's test, respectively. Sphericity assumption for RM-ANOVA was verified using Mauchly's sphericity test.

For the proportions of algal concentrations obtained from algal growth bioassays, the effects of DO treatment (*i.e.*, oxic, DO fluctuation and anoxic conditions) and sediment treatment (*i.e.* Puyvalador, Villerest and Grangent sediments) were tested using a 2-way ANOVAs. Before analysis, proportions were logit transformed to normalize data (verified by the Shapiro-Wilk's test). The homoscedasticity of the residues was also verified using the Bartlett's test. When 2-way ANOVAs were significant (*i.e.*,  $p < 0.05$ ), Tukey's post hoc tests were performed to determine which treatments ("oxygen \* sediment" treatments) differed.

In addition, we used generalized linear models to evaluate the influence of sediment characteristics on DIN and P- $\text{PO}_4^{3-}$  release rates from sediment to the water column for oxic and anoxic conditions. Each model (one per released nutrient and DO treatment) focused on three factors that represented (1) the loading of the studied nutrients in sediments (TN for evaluating DIN released to the water column, or TP for evaluating  $\text{PO}_4^{3-}$  released to the water column), (2) the microbial activity in sediments (total oxygen uptake rate) and (3) the proportion of fine sediments (clay and silts  $< 63 \mu\text{m}$ ). We checked for

multi-collinearity among the three variables (TN or TP, total oxygen uptake rate, and the proportion of fine particles in sediments) using variance inflation factors (VIF, Zuur et al., 2010) and found them to be in acceptable range (all VIF < 12). As the three factors could influence release rates of nutrients, we performed a procedure of model selection based on information theory (Burnham & Anderson, 2002) and the ranking of models according to Akaike's Information Criterion corrected for small sample size (AICc, “car” R package), starting from the most comprehensive model (including all factors). The adjusted McFadden's pseudo-R<sup>2</sup> (McFadden, 1974) was computed for all tested models to provide for a comparable estimation of the amount of explained variance among models with different number of parameters. All statistical analyses were done with the R v.3.3.2 software.

## Results

### Initial characteristics of the reservoir sediments

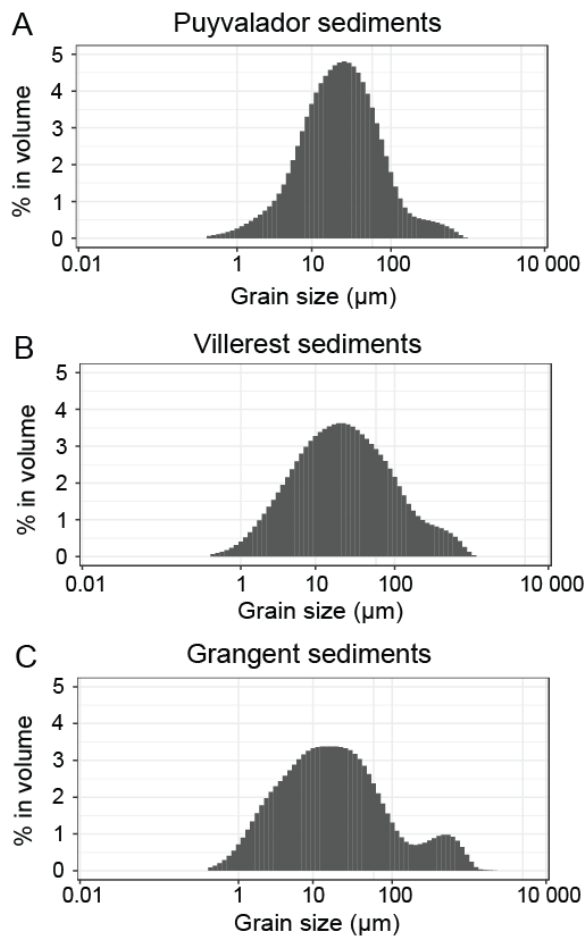
As expected, the sediments from the three reservoirs were characterized by different grain size distributions, chemical composition and microbial activities (Table 1). More precisely, the volumetric percentages of fine particles (*i.e.* silt and clay < 63µm) in sediments were significantly different among reservoirs with percentages varying from 75.7 % for Villerest sediments to 82.4 % for Puyvalador sediments, respectively (1-way ANOVA,  $p < 0.001$ , Table 1). Moreover, Puyvalador sediments presented a unimodal distribution with a peak around 20 µm (Figure 2A). Sediments of Villerest also presented a unimodal distribution with a peak around 20 µm but the distribution of sediment grain sizes around the mean was more dispersed than sediments of Puyvalador (Figure 2B). Grangent sediments had a more heterogeneous distribution with two main modes: a first mode around 20 µm and a second mode around 300 µm (Figure 2C).

**Table 1** Characteristics of Puyvalador, Villerest and Grangent sediments before application of oxic, anoxic and DO fluctuations treatments (mean ± standard error, N = 3). Different exponent letters (#, § and ☉) show significant differences among sediments (Tukey post hoc tests following significant one-way analyses of variance,  $p < 0.05$ ). Modified from Gautreau et al. (2023).

Sediments	Puyvalador	Villerest	Grangent
Fine particles <63 $\mu$ m (%)	82.4 $\pm$ 0.41 <sup>#</sup>	75.7 $\pm$ 0.58 <sup>§</sup>	79.5 $\pm$ 0.86 <sup>¤</sup>
TOC (%)	5.65 $\pm$ 0.02 <sup>#</sup>	5.90 $\pm$ 0.01 <sup>§</sup>	4.47 $\pm$ 0.07 <sup>¤</sup>
TN (%)	0.66 $\pm$ 0.008 <sup>#</sup>	0.76 $\pm$ 0.007 <sup>§</sup>	0.61 $\pm$ 0.007 <sup>¤</sup>
TP (mg.g <sup>-1</sup> dry sediment)	0.896 $\pm$ 0.090 <sup>#</sup>	0.957 $\pm$ 0.138 <sup>#§</sup>	1.260 $\pm$ 0.149 <sup>§</sup>
Fe (g.kg <sup>-1</sup> dry sediment)	30.86 $\pm$ 0.41 <sup>#</sup>	29.76 $\pm$ 0.13 <sup>#</sup>	36.64 $\pm$ 0.32 <sup>§</sup>
DO uptake rate ( $\mu$ mol per hour and m <sup>2</sup> )	1406.53 $\pm$ 56.84 <sup>#</sup>	1847.99 $\pm$ 00.43 <sup>§</sup>	2022.39 $\pm$ 7.75 <sup>§</sup>

TOC, TN and TP contents were significantly different among sediments (Table 1, 1-way ANOVAs, p-value < 0.05). For TOC and TN, an increasing gradient was observed from Grangent sediment (4.47 % for TOC and 0.61% for TN) to Villerest sediment (5.90% for TOC and 0.76% for TN) with intermediate values for Puyvalador sediment (5.65% for TOC and 0.66% for TN). TP contents were significantly higher in Grangent (1.260 mg.g<sup>-1</sup> dry sediment) than in Puyvalador (0.896  $\mu$ g.g<sup>-1</sup> dry sediment) sediments (Tukey's post-hoc test, p < 0.05). Villerest sediments had TP concentrations that were not significantly different from those measured in the two other reservoir sediments (Table 1). Concentrations in Fe were significantly higher in Grangent sediments than in Puyvalador and Villerest sediments (Tukey's post-hoc tests, p < 0.05, Table 1). No significant difference in Fe concentration was found between Puyvalador and Villerest sediments (Tukey's post-hoc test, p > 0.05, Table 1). Microbial DO uptake rates were significantly contrasted among the three reservoir sediments (1-way ANOVAs, p-value < 0.01, Table 1) with values increasing from Puyvalador and Villerest to Grangent sediments.





**Fig. 2** Grain size distribution of Puyvalador (A), Villerest (B) and Grangent (C) sediments. Note that the X-axis of sediment grain sizes is log scale displayed.

DO concentrations in the water column of the microcosms

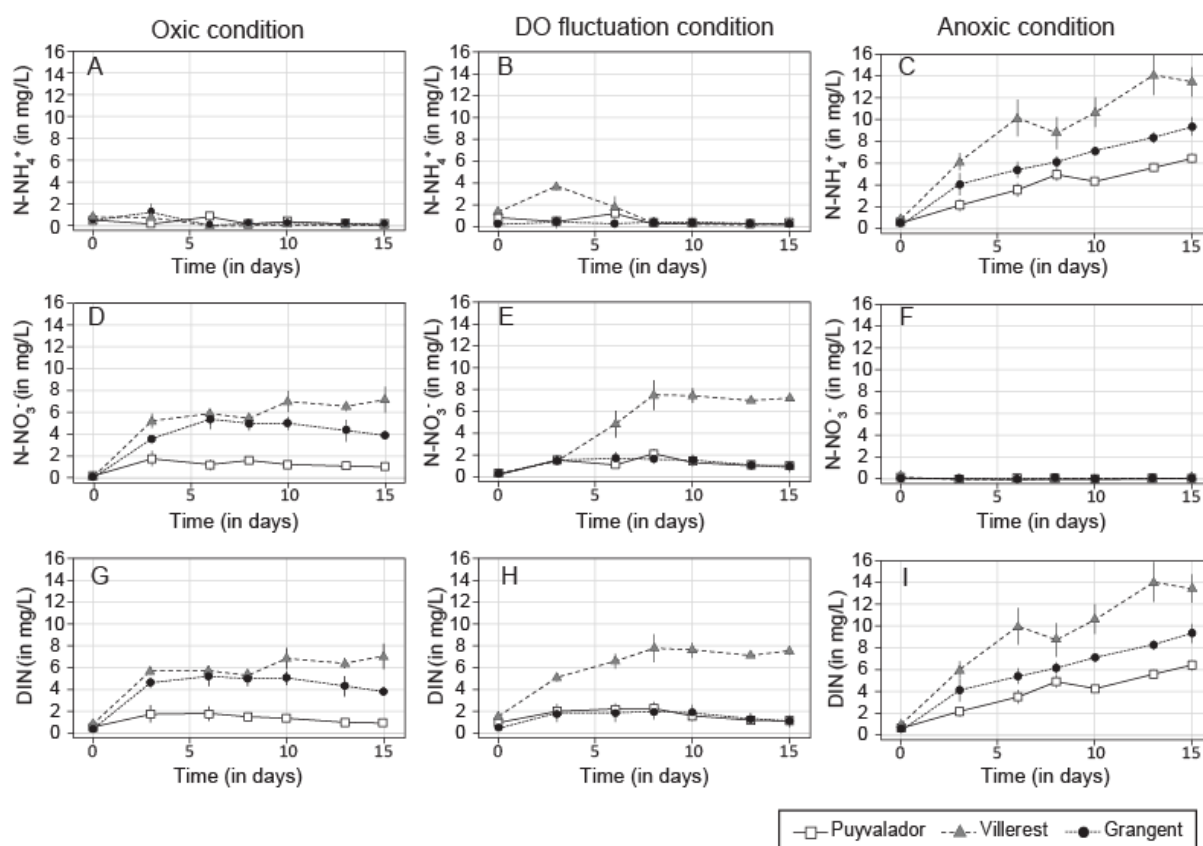
The experimental design allowed us to generate contrasting DO conditions in the water column depending on the treatment. DO concentrations were maintained between 7 and 9 mg.L<sup>-1</sup> in the water column for the oxic treatment and were below 0.05 mg.L<sup>-1</sup> for the anoxic treatment during the whole experiment in all tested sediments. In the DO fluctuation treatment, daily variations of DO concentrations differed among sediment treatments with values comprised between 7 and 9 mg.L<sup>-1</sup> at the end of the aeration period and between 0.4 and 5 mg.L<sup>-1</sup> at the end of the no-oxygen supply period (Supplementary Material 1). After 12h without oxygen supply, the water column of microcosms

experienced DO concentrations of 0.44 mg.L<sup>-1</sup>, 1.11 mg.L<sup>-1</sup> and 5 mg.L<sup>-1</sup> for Grangent, Villerest, and Puyvalador sediment treatments, respectively.

#### Influences of DO and sediment treatments on DIN dynamics

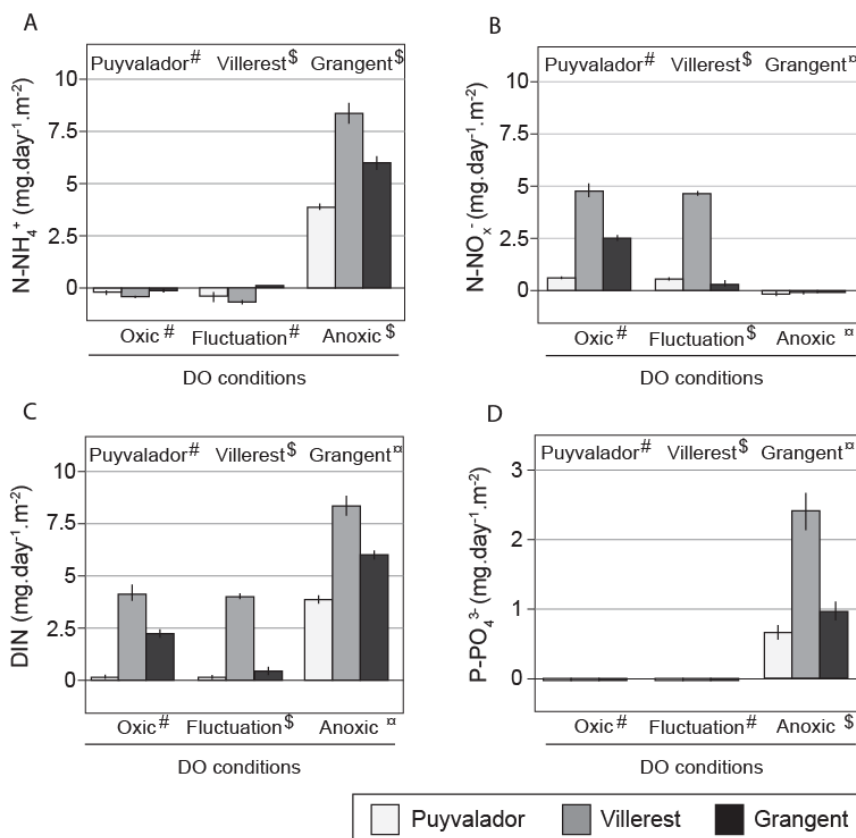
Under oxic and DO fluctuation conditions, N-NH<sub>4</sub><sup>+</sup> and N-NO<sub>3</sub><sup>-</sup> concentrations in the water column of all microcosms varied during the first days of the experiment to reach relatively stable values after 8 days of experiment (Figure 3, 2-way RM ANOVAs, “time” effect,  $p < 0.001$  for N-NH<sub>4</sub><sup>+</sup> and N-NO<sub>3</sub><sup>-</sup>, Supplementary Material 2 for detailed statistical results). Under anoxic conditions, N-NH<sub>4</sub><sup>+</sup> concentrations continuously increased during the experiment in all sediment treatments (Figure 3). The DO treatment had a significant influence on the main forms of DIN measured in the water column (2-way RM ANOVAs, “DO” treatment,  $p < 0.001$  for N-NH<sub>4</sub><sup>+</sup> and N-NO<sub>3</sub><sup>-</sup>): N-NO<sub>3</sub><sup>-</sup> was the dominant form in the microcosms experiencing the oxic treatment whereas N-NH<sub>4</sub><sup>+</sup> was the dominant form in the microcosms under anoxic conditions (Figure 3). The effects of the DO fluctuation treatment on DIN dynamics depended on the sediment treatment (2-way RM ANOVAs, interaction between “DO” and “sediment” treatments,  $p < 0.001$  for DIN). N-NH<sub>4</sub><sup>+</sup> and N-NO<sub>3</sub><sup>-</sup> concentrations in microcosms exposed to the DO fluctuation treatment were comparable to those measured in microcosms experiencing the oxic treatment with Puyvalador and Villerest sediments (Figure 3). In contrast, N-NO<sub>3</sub><sup>-</sup> concentrations measured in microcosms with Grangent sediments were significantly lower under the DO fluctuation conditions (0.81 mg.L<sup>-1</sup> on day 15) than under oxic conditions (3.7 mg.L<sup>-1</sup> on day 15). Grangent sediments produced the lowest DO concentrations (0.44 mg.L<sup>-1</sup>) among the three sediments after stopping the aeration of the water column during 12 h under the DO fluctuation treatment (Supplementary Material 1). DIN enrichment in the water column of microcosms was significantly influenced by DO treatments (2-way RM ANOVAs, “DO” treatment,  $p < 0.001$  for DIN). Higher concentrations of DIN were measured in the water column of microcosms under anoxic conditions than under oxic or DO fluctuation conditions for all tested sediments (Figure 3). DIN concentrations measured on day 15 under anoxic conditions were 5.5-fold, 2.3-fold and 1.9-fold higher compared to the oxic conditions for Puyvalador, Grangent and Villerest sediments, respectively.

For all DO treatments, microcosms filled with Villerest sediments exhibited significantly higher DIN in the water column than the two other sediments at the end of the experiment (2-way RM ANOVAs, “sediment” treatment,  $p < 0.001$ ). For example, under oxic conditions,  $\text{N-NO}_3^-$  concentrations measured in the water column on day 15 were around 2-fold and 7-fold higher in Villerest treatment ( $7.2 \text{ mg.L}^{-1}$ ) compared to Grangent ( $3.7 \text{ mg.L}^{-1}$ ) and Puyvalador ( $1.1 \text{ mg.L}^{-1}$ ) treatments, respectively (Figure 3). In contrast, Puyvalador sediments produced the lowest concentrations of  $\text{N-NO}_3^-$  under oxic conditions and concentrations of  $\text{N-NH}_4^+$  under anoxic conditions (Figure 3). Consequently, DIN concentrations in the water column under both oxic and anoxic conditions increased from Puyvalador to Grangent and Villerest sediments (2-way RM ANOVAs, “sediment” treatment,  $p < 0.001$  for DIN). No significant difference in DIN concentration was detected between Puyvalador ( $1.58 \text{ mg.L}^{-1}$ ) and Grangent ( $1.47 \text{ mg.L}^{-1}$ ) treatments under the DO fluctuation treatment (Tukey post hoc test,  $p > 0.05$ ).



**Fig. 3** Concentration of  $\text{N-NH}_4^+$  (A, B, C),  $\text{N-NO}_3^-$  as sum of  $\text{N-NO}_3^-$  and  $\text{N-NO}_2^-$  concentrations (D, E, F) and DIN ( $\text{N-NH}_4^+ + \text{N-NO}_2^- + \text{N-NO}_3^-$ ) (G, H, I) in the water column during the experimentations for oxic, DO fluctuation and anoxic treatments of Puyvalador, Villerest and Grangent sediments (mean  $\pm$  standard error,  $N=3$ )

Calculations of DIN fluxes showed that  $\text{N-NH}_4^+$  release rates were positive only in microcosms under anoxic conditions (Figure 4A, 2-way ANOVA, “DO” treatment,  $p < 0.001$ ).  $\text{N-NH}_4^+$  release rates were significantly lower in Puyvalador microcosms (mean value:  $3.98 \text{ mg}\cdot\text{day}^{-1}\cdot\text{m}^{-2}$ ) than in Villerest (mean value:  $8.38 \text{ mg}\cdot\text{day}^{-1}\cdot\text{m}^{-2}$ ) or Grangent (mean value:  $5.99 \text{ mg}\cdot\text{day}^{-1}\cdot\text{m}^{-2}$ ) microcosms (2-way ANOVA, “sediment” treatment,  $p < 0.001$ ). In contrast, only oxic and DO fluctuation conditions produced significant releases of  $\text{N-NO}_3^-$  into the water column (Figure 4B, 2-way ANOVA, “DO” treatment,  $p < 0.001$ ). Oxic and DO fluctuation treatments produced comparable  $\text{N-NO}_3^-$  release rates for Puyvalador and Villerest sediments but  $\text{N-NO}_3^-$  release rate was lower under DO fluctuation conditions ( $0.40 \text{ mg}\cdot\text{day}^{-1}\cdot\text{m}^{-2}$ ) than under oxic conditions ( $2.57 \text{ mg}\cdot\text{day}^{-1}\cdot\text{m}^{-2}$ ) for microcosms filled with Grangent sediments (2-way ANOVA, interaction between “DO” and “sediment” treatments,  $p < 0.001$ ). Significant differences in DIN release rates were found among sediment and DO treatments (Figure 4C, 2-way ANOVA, interaction between “DO” and “sediment” treatments,  $p < 0.05$ ). Release rates of DIN in microcosms filled with Villerest sediments were significantly higher for all DO conditions than release rates measured in microcosms with Puyvalador and Grangent sediments (Figure 4C). Microcosms filled with Grangent sediments presented intermediate release rates of DIN between microcosms filled with Villerest and Puyvalador sediments for all DO treatments (Figure 4C).

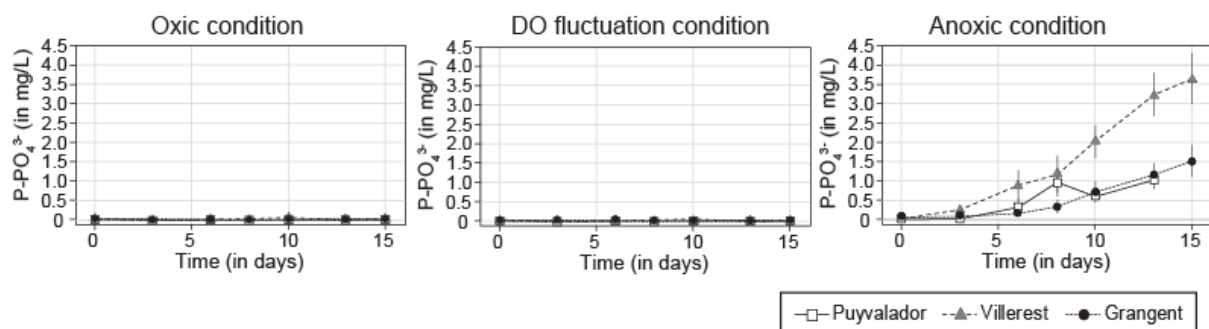


**Fig. 4** Release rates of N-NH<sub>4</sub><sup>+</sup> (A), N-NO<sub>x</sub><sup>-</sup> (B), DIN (C), and P-PO<sub>4</sub><sup>3-</sup> (D) from the sediment to the water column for the three oxygen and sediment treatments (mean ± standard error, N=3). For each panel, different symbols (#, § and Ⓜ) show significant differences among treatments (see axis label, Tukey post hoc test, p<0.05). Release rate of P-PO<sub>4</sub><sup>3-</sup> in the anoxic treatment was calculated at day 13 for Puyvalador under anoxic conditions due to an analytical problem for this measurement at day 15

#### Influences of DO and sediment treatments on P-PO<sub>4</sub><sup>3-</sup> dynamics

P-PO<sub>4</sub><sup>3-</sup> concentration in the water column significantly varied during the course of the experiment in all conditions (2-way RM ANOVA, “time” effect, p < 0.001, Supplementary Material 2 for detailed statistical results) but in the oxic and DO fluctuation treatments they remained lower than 100 µg/L throughout the experiment (Figure 5). In contrast, P-PO<sub>4</sub><sup>3-</sup> concentration in the water column of the anoxic treatment continuously increased to more than 1 mg/L at the end of the experiment. Anoxic conditions significantly increased P-PO<sub>4</sub><sup>3-</sup> concentrations in the water column in comparison with the other oxygen conditions (2-way RM ANOVA, “DO” treatment, p < 0.001). In the presence of Villerest sediments, P-PO<sub>4</sub><sup>3-</sup> concentrations reached 3.66 mg/L on day 15 in the anoxic treatment, which were

higher by 66-fold (55.4  $\mu\text{g/L}$ ) and 100-fold (36.2  $\mu\text{g/L}$ ) compared to the oxic and DO fluctuation treatments, respectively. Significant differences among sediment treatments were also observed (2-way RM ANOVA, “sediment” treatment,  $p < 0.001$ ) with Villerest sediments producing higher  $\text{P-PO}_4^{3-}$  concentrations in the water column under anoxic conditions than the two other sediments (Figure 5). For example,  $\text{P-PO}_4^{3-}$  concentrations measured on day 13 under anoxic conditions in microcosms with Villerest sediments (3.24  $\text{mg/L}$ ) were more than 2.5-fold higher than those measured with Puyvalador (1.03  $\text{mg/L}$ ) and Grangent sediments (1.17  $\text{mg/L}$ ). Consequently, calculated release rates of  $\text{P-PO}_4^{3-}$  were the highest in anoxic conditions, compared with the two other oxygen conditions (2-way ANOVA, “DO” treatment,  $p < 0.001$ ; Figure 4D). Under anoxic conditions,  $\text{P-PO}_4^{3-}$  release rates from Villerest sediments ( $2.42 \text{ mg}\cdot\text{day}^{-1}\cdot\text{m}^{-2}$ ) was significantly higher than rates measured with Puyvalador ( $0.69 \text{ mg}\cdot\text{day}^{-1}\cdot\text{m}^{-2}$ ) and Grangent ( $0.95 \text{ mg}\cdot\text{day}^{-1}\cdot\text{m}^{-2}$ ) sediments (2-way ANOVA, “sediment” treatment,  $p < 0.001$ ).



**Fig. 5** Concentration in  $\text{P-PO}_4^{3-}$  in water column during the experimentation for oxic (A), DO fluctuation (B) and anoxic (C) treatments for the three sediment treatments (Puyvalador, Villerest and Grangent sediments) (mean  $\pm$  standard error,  $N=3$ ). \* Concentrations of  $\text{P-PO}_4^{3-}$  in the anoxic treatment at day 15 for Puyvalador are lacking due to an analytical problem

Influence of sediment characteristics on DIN and  $\text{P-PO}_4^{3-}$  release rates from sediment to the water column

From the three sediment predictors (proportion of fine sediment particles, total nutrient content, and total oxygen uptake), generalized linear model selections showed that the proportion of fine particles in

sediments (clay and silts < 63  $\mu\text{m}$ ) was the best predictor of nutrient release rates (both DIN and  $\text{P-PO}_4^{3-}$  release rates) in both oxic and anoxic conditions (Table 2). Whatever the studied nutrient and oxygen conditions, nutrient release rates decreased with the proportion of fine particles (Figure 6, generalized linear models,  $F_{(1,7)} > 31$ ,  $p < 0.001$ , adjusted  $R^2 > 0.79$  for the four relationships presented in Figure 6).

**Table 2** Model selections for estimating the influences of sediment characteristics on DIN (A, B), and  $\text{P-PO}_4^{3-}$  (C, D) concentrations released to water column under oxic (A, C) and anoxic (B, D) conditions. Models are ranked by decreasing Akaike's information criterion corrected for small sample size (AICc). A difference of AICc between two models is considered as a significant improvement in favor of the model with the lowest AICc. The 'adjusted  $R^2$ ' (modified  $R^2$  that has been adjusted for the number of factors included in the model) is indicated here as an estimation of the proportion of variance explained by the corresponding model. DIN = Dissolved Inorganic Nitrogen, FineSed = logit-transformed (proportion of particles < 63  $\mu\text{m}$  in sediments), TOU = Total Oxygen Uptake in sediments, TN = Total Nitrogen, TP = Total Phosphorus.

A) DIN release to water column under oxic conditions

<b>General Linear models</b>	<b>AICc</b>	<b>adjusted <math>R^2</math></b>
DIN release ~ FineSed	27.80	0.914
DIN release ~ FineSed + TN	29.14	0.948
DIN release ~ FineSed + TOU	30.89	0.936
DIN release ~ FineSed + TN + TOU	41.11	0.937
DIN release ~ TN + TOU	41.25	0.799
DIN release ~ TOU	44.25	0.465
DIN release ~ TN	48.03	0.186

B) DIN release to water column under anoxic conditions

<b>General Linear models</b>	<b>AICc</b>	<b>adjusted <math>R^2</math></b>
DIN release ~ FineSed	31.96	0.922
DIN release ~ FineSed + TOU	39.15	0.909
DIN release ~ FineSed + TN	39.09	0.910
DIN release ~ TN + TOU	44.38	0.838
DIN release ~ TN	50.29	0.403

DIN release ~ FineSed + TN + TOU	50.76	0.896
DIN release ~ TOU	51.99	0.279

---

C) PO<sub>4</sub><sup>3-</sup> release to water column under oxic conditions

<b>General Linear models</b>	<b>AICc</b>	<b>adjusted R<sup>2</sup></b>
PO <sub>4</sub> <sup>3-</sup> release ~ FineSed	73.44	0.896
PO <sub>4</sub> <sup>3-</sup> release ~ FineSed + TOU	78.47	0.905
PO <sub>4</sub> <sup>3-</sup> release ~ FineSed + TP	79.69	0.891
PO <sub>4</sub> <sup>3-</sup> release ~ TP + TOU	88.81	0.701
PO <sub>4</sub> <sup>3-</sup> release ~ TOU	88.89	0.423
PO <sub>4</sub> <sup>3-</sup> release ~ FineSed + TP + TOU	89.84	0.894
PO <sub>4</sub> <sup>3-</sup> release ~ TP	94.67	-0.096

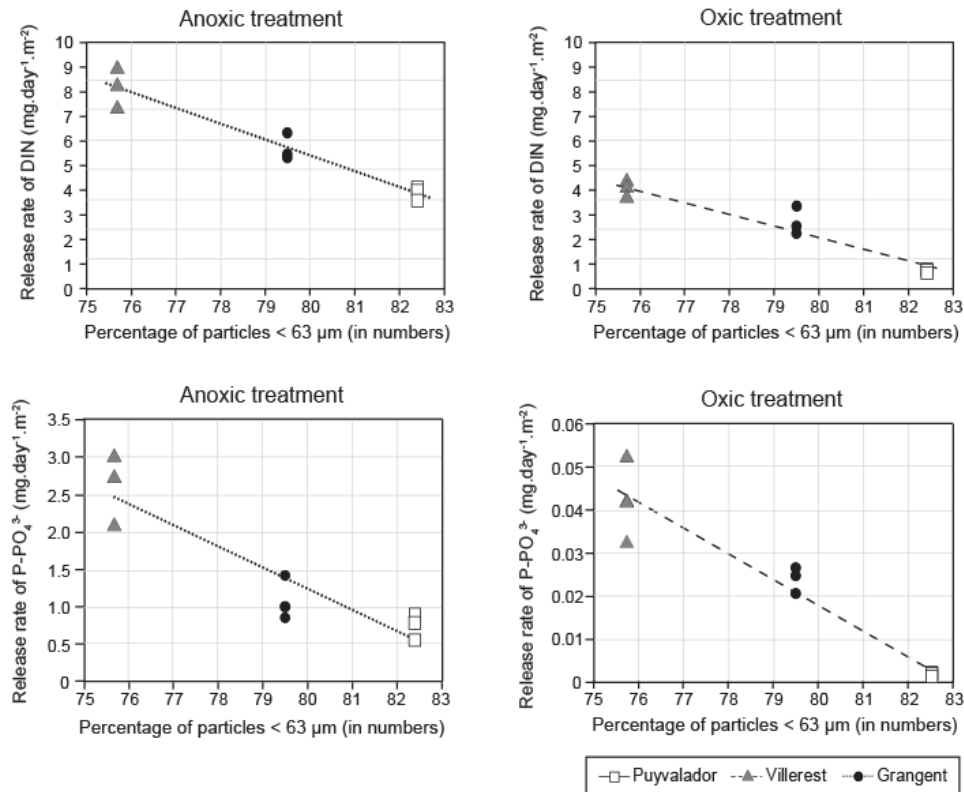
---

D) PO<sub>4</sub><sup>3-</sup> release to water column under anoxic conditions

<b>General Linear models</b>	<b>AICc</b>	<b>adjusted R<sup>2</sup></b>
PO <sub>4</sub> <sup>3-</sup> release ~ FineSed	148.79	0.790
PO <sub>4</sub> <sup>3-</sup> release ~ FineSed + TP	150.70	0.864
PO <sub>4</sub> <sup>3-</sup> release ~ FineSed + TOU	154.44	0.794
PO <sub>4</sub> <sup>3-</sup> release ~ TP + TOU	155.46	0.769
PO <sub>4</sub> <sup>3-</sup> release ~ FineSed + TP + TOU	158.39	0.899
PO <sub>4</sub> <sup>3-</sup> release ~ TOU	162.19	0.068
PO <sub>4</sub> <sup>3-</sup> release ~ TP	163.73	-0.105

---



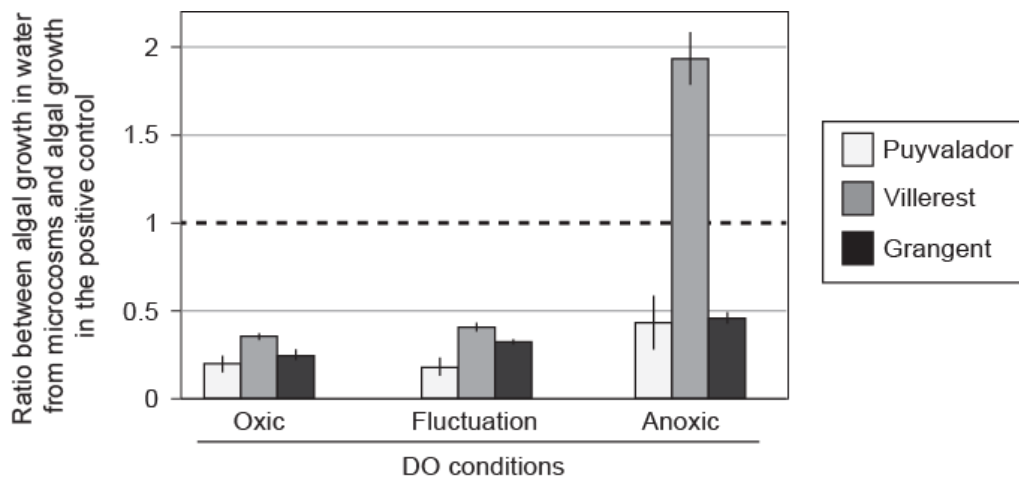


**Fig. 6** Regression analyses showing the adjustment of measured release rates of DIN and P-PO<sub>4</sub><sup>3-</sup> in anoxic and oxic conditions predicted from the percentage of particles < 63 μm in the three sediments

#### Algal growth bioassays

Bioassays showed higher algal growth rates in the water collected from microcosms under anoxic treatment than in the water of microcosms that experienced oxic or DO fluctuation treatments (2-way ANOVA, “DO” treatment,  $p < 0.001$ ). Algal growth rates were around 2-fold higher in the water collected from microcosms filled with Puyvalador and Grangent sediments under anoxic conditions in comparison with the two other DO treatments (Figure 7). This influence of the anoxic treatment on algal growth in bioassays was more marked with water column collected from Villerest microcosms (2-way ANOVA, interaction between “DO” and “sediment” treatments,  $p < 0.001$ ): growth rates were increased by 9-fold and 4.5-fold in waters collected from the anoxic treatment compared with the waters from microcosms that experienced oxic or DO fluctuation treatments, respectively. Significant differences in algal growth rate were detected among sediment treatments (2-way ANOVA, “sediment” effect,  $p < 0.001$ ). For microcosms that experienced anoxic conditions, algal growth rates in waters collected from

Villerest microcosms were 4- and 3-fold higher than rates measured in waters collected from Puyvalador and Grangent microcosms, respectively. Algal growth measured in the water collected from Villerest microcosms under anoxic condition was the only treatment resulting in higher (x 1.9, Figure 7) algal growth rate compared to the algal culture medium (*i.e.*, in Chu medium used as positive control).



**Fig. 7** Ratios between algal growth in the water collected from the microcosms and algal growth in the positive control (Chu medium) for the three sediment treatments (*i.e.*, Puyvalador, Villerest and Grangent sediments) and the three oxygen treatments (*i.e.*, oxic, DO fluctuation and anoxic conditions) (mean  $\pm$  standard error, N=3)

## Discussion

The prediction that anoxic conditions would produce higher concentrations of  $\text{NH}_4^+$  and  $\text{PO}_4^{3-}$  and lower concentrations of  $\text{NO}_3^-$  in the water column than oxic conditions was verified by the experimental results. We also validated that anoxic conditions would lead to higher total DIN concentrations in the water column compared with the oxic conditions. As classically observed (*e.g.*, Carignan et al., 1985; Fenchel et al., 2012),  $\text{NH}_4^+$  that was produced by OM mineralization *via* ammonification in the sediment environment diffused into the water column for all oxygen and sediment treatments. However, biogeochemical processes involved in the N cycling were different in oxic and anoxic conditions. Oxic conditions favored the nitrification process at the SWI (*i.e.*, transformation of  $\text{NH}_4^+$  into  $\text{NO}_2^-$  then  $\text{NO}_3^-$

) whereas nitrification was inhibited in anoxic conditions (Rysgaard et al., 1994; Malecki et al., 2004). Consequently, the accumulation of  $\text{NH}_4^+$  in the water column was favored in anoxic conditions whereas  $\text{NO}_3^-$  was the dominant form of DIN in the water column in oxic conditions. Release rates of  $\text{NH}_4^+$  were the highest in anoxic conditions (between 3.9 and 8.4  $\text{mg}\cdot\text{day}^{-1}\cdot\text{m}^{-2}$  for Puyvalador and Villerest, respectively) than in oxic conditions for all tested sediments. These results were comparable to release rates of  $\text{NH}_4^+$  in meso/eutrophic lakes (between 5.5 and 10  $\text{mg}\cdot\text{day}^{-1}\cdot\text{m}^{-2}$ ) measured under anoxic conditions while they were negligible in oxic conditions (Beutel, 2006).

For P dynamics,  $\text{PO}_4^{3-}$  concentrations in the water column were higher in anoxic than in oxic conditions (x 550 for Puyvalador, x 66 for Villerest, and x 40 for Grangent sediments). Anoxic conditions probably caused the reductive dissolution of Fe/Mn/Al oxides and the release of associated  $\text{PO}_4^{3-}$  (e.g. Steinman et al., 2016). This reduction mechanism increased  $\text{PO}_4^{3-}$  concentration into the interstitial water and consequently the molecular diffusion of  $\text{PO}_4^{3-}$  from the interstitial water to the water column (Mortimer, 1941; Boström et al., 1988; Boudreau, 1996; Rapin et al., 2019). The release rates of  $\text{PO}_4^{3-}$  were also significantly higher in anoxic conditions than those measured under oxic conditions (between x 87 for Grangent and x 811 for Puyvalador sediments). These values were comparable to those reported in the review of Nürnberg (1988) for meso/eutrophic lakes (from 0.8 to maximum release rate of 32  $\text{mg}\cdot\text{day}^{-1}\cdot\text{m}^{-2}$ ). DO availability modified  $\text{PO}_4^{3-}$  dynamics through adsorption/desorption mechanisms with Fe/Mn/Al oxides, which was in accordance with the measured concentrations of Fe in sediments (Table 1) that might have adsorbed P in oxic conditions. Total iron to total phosphorus ratios (Fe:P by weight) in the three sediments (*i.e.*, 34.7, 31.5, and 29.4 for Puyvalador, Villerest, and Grangent sediments, respectively) were largely higher than 15, which is the Fe:P ratio index (by weight) proposed by Jensen et al. (1992) above which Fe content is expected to control  $\text{PO}_4^{3-}$  release from oxic sediments. Generalized linear models showed that the percentage of fine particles ( $< 63 \mu\text{m}$ ) also appeared as a main factor influencing the release rate of  $\text{PO}_4^{3-}$  (but also DIN) from sediments to the water column in both oxic and anoxic conditions. Differences in rates of diffusive transport of solutes at the SWI of control microcosms among sediment treatments were probably due to contrasting sediment properties (*i.e.* porosity and both pore connectivity and tortuosity) (Boudreau, 1996; Shen & Chen, 2007)

associated with differences in particle grain size distribution among sediments. It seemed from the present experiment that the proportion of clay and silt particles in reservoir sediments reduced the release rates of  $\text{PO}_4^{3-}$  by limiting molecular diffusion between sediment and surface water compartment. In contrast, the stock of phosphorus in sediments and the microbial mineralization of organic P had low influences on  $\text{PO}_4^{3-}$  fluxes at the SWI. The generalized linear model selection did not indicate that total phosphorus and total oxygen uptake were the main factors influencing  $\text{PO}_4^{3-}$  fluxes at the SWI in both oxic and anoxic conditions. However, this lack of link between TP and  $\text{PO}_4^{3-}$  fluxes at the SWI was probably due to the narrow range of TP content of the reservoir sediments tested (from 0.89 to 1.26 mg of total phosphorus per g of dry sediment). Positive relationships between the concentration of TP in sediments and P release rates from sediments to the water column were classically observed when wider ranges of TP content were considered (e.g., Jensen et al., 1992).

While DIN forms measured in the water column depended on the oxygen treatment ( $\text{NH}_4^+$  and  $\text{NO}_3^-$  in anoxic and oxic conditions, respectively), total DIN concentrations measured on day 15 in the anoxic conditions were 5.5-fold, 2.3-fold and 1.9-fold higher compared to the oxic conditions for Puyvalador, Grangent and Villerest sediments, respectively. These differences were probably linked to contrasted microbial activities involved in N cycles depending on oxygen availability. Under oxic conditions,  $\text{NH}_4^+$  released in water column was successively nitrified (transformation of  $\text{NH}_4^+$  to  $\text{NO}_3^-$ ) and then denitrified (transformation of  $\text{NO}_3^-$  to gaseous  $\text{N}_2$ ) after diffusion of  $\text{NO}_3^-$  from oxic water column to anoxic layers of the sediment compartment. This denitrification process resulted in a net loss of N in all oxic treatments. Under anoxic conditions,  $\text{NH}_4^+$  concentrations continuously increased in the water column, suggesting that  $\text{NH}_4^+$  transformation into  $\text{NO}_2^-$  and  $\text{NO}_3^-$  was limited in the absence of oxygen. Consequently, denitrification process was inhibited under anoxic conditions, limiting the loss of DIN from water column by gaseous  $\text{N}_2$  production. No volatilization of  $\text{NH}_3$  associated with  $\text{NH}_4\text{-NH}_3$  equilibrium could occur because pH ( $\sim 7.2$ ) was markedly lower than 10 in microcosms under anoxic treatment (Reddy & DeLaune, 2008). Moreover,  $\text{NO}_2^-$  concentrations measured in water column were very low (mean between 15  $\mu\text{g/L}$  for Puyvalador and 26  $\mu\text{g/L}$  for Villerest on day 15) in anoxic treatments, leading to no or very low anammox activity (transformation of N- $\text{NH}_4^+$  and N- $\text{NO}_2^-$  to

gaseous N<sub>2</sub>) (Mulder et al., 1995; Thamdrup & Dalsgaard, 2002). Differences in N loss by denitrification between anoxic (inhibition of denitrification) and oxic (nitrification of released NH<sub>4</sub><sup>+</sup> from sediment followed by a denitrification of the produced NO<sub>3</sub><sup>-</sup>) treatments could explain the lower concentrations of DIN measured in water column of microcosms under oxic conditions than under anoxic conditions. As demonstrated by Jenkins & Kemp (1984) in estuarine sediments, oxygen availability had control over nitrification process and associated denitrification in the present study.

Under daily fluctuation of DO, we expected that nitrification and denitrification at the SWI would be stimulated alternately by high and low oxygen concentrations in the water column, reducing the accumulation of NO<sub>3</sub><sup>-</sup> in the water column in comparison with the oxic treatment. This prediction has been validated for microcosms filled with Grangent sediments in which NO<sub>3</sub><sup>-</sup> concentrations in water column were around 3-fold lower in the DO fluctuation treatment than in the oxic treatment. The microbial activity and oxygen uptake rate measured in Grangent sediment were high enough to produce large DO fluctuations at the SWI that favored nitrification process during aeration (7-8 mg/L of DO) and denitrification process after the turn off of air source for 12 hours (0.44 mg/L of DO). However, this stimulation of nitrification and denitrification alternately by low and high DO concentrations was not observed in the two other sediments characterized by lower oxygen uptake rates (-40% for Puyvalador sediments and -30% for Villerest sediments) than in Grangent sediments. Because of these lower respiration rates, DO concentrations never dropped below 1 mg/L under DO fluctuation treatments for Puyvalador (5.08 mg/L) and Villerest (1.11 mg/L) sediments. Consequently, DO fluctuations did not stimulate the nitrification-denitrification coupling and DIN dynamics were comparable in the DO fluctuation and oxic treatments for these two sediments. The DO fluctuation treatment showed that the microbial respiration rate in sediment might have regulated N cycling by determining oxic/anoxic conditions in the water column. This conclusion would be consistent with several works (Kemp et al., 2009; Howarth et al., 2011; Steinsberger et al., 2019) indicating that biogeochemical feedbacks associated with OM mineralization and oxygen uptake rates in sediments determined the availability of N in aquatic ecosystems. The selection of generalized linear models also showed that the percentage of fine particles (< 63 µm) was a main factor determining DIN release rate in both oxic and anoxic

conditions. As observed for  $\text{PO}_4^{3-}$ , DIN release rates decreased with the percentage of clay and silt particles, suggesting that fine particles significantly reduced the diffusion rate of dissolved nutrients from sediments to the water column. Nevertheless, it is worth noting that such physical effect of sediment characteristics on nutrient diffusion from sediments to the overlying water was observed in absence of bioturbating fauna, which could increase sediment porosity at the SWI (Berg et al., 2001). By creating biogenic structures in sediments, bioturbating fauna can increase the water and solute exchanges at the SWI in a wide range of sediments. Using the three reservoir sediments of the present experiment, Gautreau et al. (2023) demonstrated that the highest release rates of P- $\text{PO}_4^{3-}$  were measured in microcosms filled with Grangent sediments when the SWI was bioturbated by tubificid worms or chironomid larvae. The present study showed that, without bioturbation, the highest release rates of P- $\text{PO}_4^{3-}$  were measured in the water column of microcosms filled with Villerest sediments. So, the release rates measured in the present study cannot be directly transferred to reservoir sediments inhabited by bioturbating fauna (Mulsow et al., 1998).

Algal growth bioassays showed that the highest algal growth rates were measured in the water column of microcosms containing the highest concentrations of  $\text{PO}_4^{3-}$  (*i.e.* water collected from microcosms exposed to anoxic conditions). P availability for algae was higher in the water column of microcosms experiencing anoxic conditions than in other DO conditions. Following the Redfield ratio of 16 as the optimal molar N:P ratio for algal growth (Redfield, 1958; Goldman, 1980) and especially for the growth of *Raphidocelis subcapitata* (Silva et al., 2015), calculations of ratios from DIN and  $\text{PO}_4^{3-}$  concentrations measured at the end of the experiment indicated that N:P ratios were not P-limited in waters collected from microcosms under anoxic conditions whereas N:P ratios suggested P-limited conditions in water from microcosms exposed to DO fluctuation or oxic treatments. Ratios measured under anoxic conditions were 8.2, 14.2 and 14.1 for Villerest, Puyvalador and Grangent sediments, respectively. In contrast, molar N:P ratios in oxic and DO fluctuation treatments were comprised between 65 and 1450, suggesting a strong P-limitation and reduced algal growth rate (Guildford & Hecky, 2000). As observed in many eutrophic lakes during the summer and early autumn (Kowalczywska-Madura & Gołdyn, 2012; Søndergaard et al., 2017), our results confirmed that anoxic conditions at the SWI produced a

comparatively higher release of  $\text{PO}_4^{3-}$  than a release of DIN from sediments to water column, stimulating phytoplankton growth by relaxing P limitation. Under anoxic conditions, DIN was mainly as  $\text{N-NH}_4^+$ , which was likely more readily assimilated by *Raphidocelis subcapitata* than  $\text{N-NO}_3^-$  (Silva et al., 2015). This difference in nitrogen form availability could explain why the algal growth measured in the water collected from Villerest microcosms under anoxic condition was 1.9-fold higher than the growth rate measured in Chu medium characterized by nitrate as the sole source of inorganic nitrogen.

## Conclusions

The first main conclusion of this study was that anoxic conditions at the SWI had a major influence on the release of DIN and  $\text{PO}_4^{3-}$  from sediments to the water column. In all tested sediments, the anoxic treatment showed the largest release of DIN, as  $\text{NH}_4^+$ , and  $\text{PO}_4^{3-}$ , compared to the oxic and DO fluctuation treatments. Sediment grain size distribution had also a major role in DIN and  $\text{PO}_4^{3-}$  fluxes at the SWI in all DO conditions. By reducing the porosity, the percentage of silt and clay probably limited the diffusion rate of dissolved nutrients from sediment to water column. This physical effect on nutrient release rates is probably not dominant in sediments inhabited by bioturbating fauna but it should be in sediment systems characterized by anoxic conditions which are unfavorable for benthic fauna (e.g., Real & Prat, 1992). Under anoxic conditions, sediment grain size such as the percentage of fine particles could be used as a proxy to evaluate nutrient release rates at the SWI of reservoirs. These findings suggested to develop field works on a wide range of lakes and reservoirs to determine whether redox changes at the SWI associated with sediment characteristics could be used as early-warning indicators of algal blooms in eutrophic freshwater ecosystems.

## References

- Amorim, C. A. & A. do Nascimento Moura, 2021. Ecological impacts of freshwater algal blooms on water quality, plankton biodiversity, structure, and ecosystem functioning. *Science of the Total Environment* 758: 143605. <https://doi.org/10.1016/j.scitotenv.2020.143605>.
- Andersen, R. A., 2005. *Algal culturing techniques*. Academic Press, Burlington: 578.
- Anschutz, P., A. Ciutat, P. Lecroart, M. Gérino & A. Boudou, 2012. Effects of tubificid worm bioturbation on freshwater sediment biogeochemistry. *Aquatic Geochemistry* 18: 475–497. <https://doi.org/10.1007/s10498-012-9171-6>.
- Berg, P., S. Rysgaard, P. Funch, & M. K. Sejr, 2001. Effects of bioturbation on solutes and solids in marine sediments. *Aquatic Microbial Ecology* 26: 81-94. <https://doi.org/10.3354/ame026081>.
- Berner, R. A., 1980. *Early diagenesis: A theoretical approach*. Princeton University Press, Princeton: 256.
- Beutel, M. W., 2006. Inhibition of ammonia release from anoxic profundal sediments in lakes using hypolimnetic oxygenation. *Ecological Engineering* 28: 271–279. <https://doi.org/10.1016/j.ecoleng.2006.05.009>.
- Beutel, M. W., T. M. Leonard, S. R. Dent & B. C. Moore, 2008. Effects of aerobic and anaerobic conditions on P, N, Fe, Mn, and Hg accumulation in waters overlaying profundal sediments of an oligo-mesotrophic lake. *Water Research* 42: 1953-1962. <https://doi.org/10.1016/j.watres.2007.11.027>
- Bortleson, G. C. & G. F. Lee, 1974. Phosphorus, iron, and manganese distribution in sediment cores of six Wisconsin lakes. *Limnology and Oceanography* 19: 794-801. <https://doi.org/10.4319/lo.1974.19.5.0794>.
- Boström, B., J. M. Andersen, S. Fleischer & M. Jansson, 1988. Exchange of phosphorus across the sediment-water interface. In Persson, G. & M. Jansson (eds.), *Phosphorus in freshwater ecosystems*. Springer, Dordrecht: 229–244. [http://www.springerlink.com/index/10.1007/978-94-009-3109-1\\_14](http://www.springerlink.com/index/10.1007/978-94-009-3109-1_14).



Boudreau, B. P., 1996. The diffusive tortuosity of fine-grained unlithified sediments. *Geochimica and Cosmochimica Acta* 60: 3139–3142. [https://doi.org/10.1016/0016-7037\(96\)00158-5](https://doi.org/10.1016/0016-7037(96)00158-5).

Burnham, K. P. & D. R. Anderson, 2002. *Model selection and multi-model inference: A practical information-theoretic approach*. Springer, New York: 488. <https://doi.org/10.1007/b97636>.

Carignan, R., F. Rapin & A. Tessier, 1985. Sediment porewater sampling for metal analysis: A comparison of techniques. *Geochimica and Cosmochimica Acta* 49: 2493–2497. [https://doi.org/10.1016/0016-7037\(85\)90248-0](https://doi.org/10.1016/0016-7037(85)90248-0).

Chu, S. P., 1942. The influence of the mineral composition of the medium on the growth of planktonic algae: Part I. Methods and culture media. *Journal of Ecology* 30: 284–325. <https://doi.org/10.2307/2256574>.

Cymbola, J., M. Ogdahl & A. D. Steinman, 2008. Phytoplankton response to light and internal phosphorus loading from sediment release. *Freshwater Biology* 53: 2530-2542.

Ekeröth, N., S. Blomqvist & P. Hall, 2016. Nutrient fluxes from reduced Baltic Sea sediment: Effects of oxygenation and macrobenthos. *Marine Ecology Progress Series* 544: 77–92. <https://doi.org/10.3354/meps11592>.

Fenchel, T., T. H. Blackburn & G.M. King, 2012. Chapter 7: Aquatic sediments bacterial biogeochemistry: the ecophysiology of mineral cycling. Academic Press, London: 121–142.

Forsberg, C., 1989. Importance of sediments in understanding nutrient cyclings in lakes. *Hydrobiologia* 176: 263–277. <https://doi.org/10.1007/BF00026561>.

Fukuhara, H. & M. Sakamoto, 1987. Enhancement of inorganic nitrogen and phosphate release from lake sediment by tubificid worms and chironomid larvae. *Oikos* 48:312-320. <https://doi.org/10.2307/3565519>.

Gautreau, E., L. Volatier, G. Nogaro, E. Gouze, P. Marmonier & F. Mermillod-Blondin, 2023. Interactions between microbial activity and bioturbation modes of benthic invertebrates determine

nutrient releases from reservoir sediments. *Freshwater Biology* 68: 245-259.  
<https://doi.org/10.1111/fwb.14021>.

Gautreau, E., L. Volatier, G. Nogaro, E. Gouze, P. Marmonier & F. Mermillod-Blondin, 2020. The influence of bioturbation and water column oxygenation on nutrient recycling in reservoir sediments. *Hydrobiologia* 847: 1027–1040. <https://doi.org/10.1007/s10750-019-04166-0>.

Gebara, R. C., L. D. O. G. Alho, G. S. Rocha, A. da Silva Mansano & M. D. G. G. Melão, 2020. Zinc and aluminum mixtures have synergic effects to the algae *Raphidocelis subcapitata* at environmental concentrations. *Chemosphere* 242: 125231. <https://doi.org/10.1016/j.chemosphere.2019.125231>.

Gilbert, F., S. Hulth, V. Grossi & R. C. Aller, 2016. Redox oscillation and benthic nitrogen mineralization within burrowed sediments: An experimental simulation at low frequency. *Journal of Experimental Marine Biology and Ecology* 482: 75–84.  
<https://www.sciencedirect.com/science/article/abs/pii/S0022098116300831>.

Giles, C. D., P. D. Isles, T. Manley, Y. Xu, G. K. Druschel & A. W. Schroth, 2016. The mobility of phosphorus, iron, and manganese through the sediment–water continuum of a shallow eutrophic freshwater lake under stratified and mixed water-column conditions. *Biogeochemistry* 127: 15-34.  
<https://doi.org/10.1007/s10533-015-0144-x>.

Glud, R. N., 2008. Oxygen dynamics of marine sediments. *Marine Biological Research* 4: 243–289.  
<https://doi.org/10.1080/17451000801888726>.

Goldman, J. C., 1980. Physiological processes, nutrient availability, and the concept of relative growth rate in marine phytoplankton ecology. In Falkowski, P.G. (ed.), *Primary productivity in the sea*. Springer, Boston: 179-194. [https://doi.org/10.1007/978-1-4684-3890-1\\_10](https://doi.org/10.1007/978-1-4684-3890-1_10).

Grasshoff, K., M. Ehrhardt & K. Kremling, 1983. *Methods of seawater analysis* (2<sup>nd</sup> edition). Verlag Chemie, Berlin: 420.

Guildford, S. J. & R. E. Hecky, 2000. Total nitrogen, total phosphorus, and nutrient limitation in lakes and oceans: is there a common relationship? *Limnology and Oceanography* 45: 1213-1223. <https://doi.org/10.4319/lo.2000.45.6.1213>.

Howarth, R., F. Chan, D. J. Conley, J. Garnier, S. C. Doney, R. Marino & G. Billen, 2011. Coupled biogeochemical cycles: eutrophication and hypoxia in temperate estuaries and coastal marine ecosystems. *Frontiers in Ecology and Environment* 9: 18–26. <https://doi.org/10.1890/100008>.

Huang, C., L. Zhang, Y. Li, C. Lin, T. Huang, M. Zhang, A.-X. Zhu, H. Yang & X. Wang, 2018. Carbon and nitrogen burial in a plateau lake during eutrophication and phytoplankton blooms. *Science of the Total Environment* 616: 296-304. <https://doi.org/10.1016/j.scitotenv.2017.10.320>.

Huettel, M. & I. T. Webster, 2001. Porewater flow in permeable sediments. In Boudreau, B.P. & B. B. Jorgensen (eds.), *The benthic boundary layer: transport processes and biogeochemistry*. Oxford University Press, New York: 144-177.

Hupfer, M. & J. Lewandowski, 2008. Oxygen controls the phosphorus release from lake sediments - a long-lasting paradigm in limnology. *International Review of Hydrobiology* 93: 415–432. <https://doi.org/10.1002/iroh.200711054>.

Jenkins, M. C. & W. M. Kemp, 1984. The coupling of nitrification and denitrification in two estuarine sediments. *Limnology and Oceanography* 29: 609–619. <https://doi.org/10.4319/lo.1984.29.3.0609>.

Jensen, H. S., P. Kristensen, E. Jeppesen & A. Skytthe, 1992. Iron: phosphorus ratio in surface sediment as an indicator of phosphate release from aerobic sediments in shallow lakes. *Hydrobiologia* 235/236: 731-743. [https://doi.org/10.1007/978-94-011-2783-7\\_66](https://doi.org/10.1007/978-94-011-2783-7_66).

Jeppesen, E., M. Sondergaard, J. P. Jensen, K. E. Havens, O. Anneville, L. Carvalho, M. F. Coveney, R. Deneke, M. T. Dokulil, B. O. Foy, D. Gerdeaux, S. E. Hampton, S. Hilt, K. Kangur, J. Köhler, E. Lammens, T. L. Lauridsen, M. Manca, M. Miracle, B. Moss, P. Noges, G. Persson, G. Phillips, R. Portielje, S. Romo, C. L. Schelske, D. Straile, I. Tatrai, E. Willen & M. Winder, 2005. Lake responses

to reduced nutrient loading—An analysis of contemporary long-term data from 35 case studies. *Freshwater Biology* 50: 1747–1771. <https://doi.org/10.1111/j.1365-2427.2005.01415.x>

Joshi, S., K. K. Ravi, J. B. David, E. B. Mark, L. S. Donald & P. J. Deb, 2015. Organic matter remineralization predominates phosphorus cycling in the mid-bay sediments in the Chesapeake Bay. *Environmental Science and Technology* 49: 5887–5896. <https://doi.org/10.1021/es5059617>.

Kemp, W. M., J. M. Testa, D. J. Conley, D. Gilbert & J. D. Hagy, 2009. Temporal responses of coastal hypoxia to nutrient loading and physical controls. *Biogeosciences* 6: 2985–3008. <https://doi.org/10.5194/bg-6-2985-2009>.

Kowalczywska-Madura, K. & R. Gołdyn, 2012. Spatial and seasonal variability of pore water phosphorus concentration in shallow Lake Swarzędzkie, Poland. *Environmental Monitoring and Assessment* 184: 1509–1516. <https://doi.org/10.1007/s10661-011-2056-0>.

Kristensen, E., 2000. Organic matter diagenesis at the oxic/anoxic interface in coastal marine sediments, with emphasis on the role of burrowing animals. *Hydrobiologia* 426: 1–24. [https://doi.org/10.1007/978-94-011-4148-2\\_1](https://doi.org/10.1007/978-94-011-4148-2_1).

Lavery, P. S., C. E. Oldham & M. Ghisalberti, 2001. The use of Fick's First Law for predicting porewater nutrient fluxes under diffusive conditions. *Hydrological Processes* 15: 2435-2451. <https://doi.org/10.1002/hyp.297>.

Li, Y., Y. Liu, H. Wang, Z. Zuo, Z. Yan, L. Wang, D. Wang, C. Liu & D. Yu, 2023. In situ remediation mechanism of internal nitrogen and phosphorus regeneration and release in shallow eutrophic lakes by combining multiple remediation techniques. *Water Research* 229: 119394.

Ma, J., S. Wang, P. Wang, L. Ma, X. Chen & R. Xu, 2006. Toxicity assessment of 40 herbicides to the green alga *Raphidocelis subcapitata*. *Ecotoxicology and Environmental Safety* 63: 456-462. <https://doi.org/10.1016/j.ecoenv.2004.12.001>.

Malecki, L. M., J. R. White & K. R. Reddy, 2004. Nitrogen and phosphorus flux rates from sediment in the lower St. Johns River estuary. *Journal of Environmental Quality* 33: 1545-1555. <https://doi.org/10.2134/jeq2004.1545>.

McFadden, D., 1974. Conditional logit analysis of qualitative choice behaviour. In Zarembka, P. (ed.), *Frontiers in econometrics*. Academic Press, New York: 105–142.

Meinikmann, K., M. Hupfer & J. Lewandowski, 2015. Phosphorus in groundwater discharge - a potential source for lake eutrophication. *Journal of Hydrology* 524: 214–226. <https://doi.org/10.1016/j.jhydrol.2015.02.031>.

Moore Jr, P., K. Reddy & D. Graetz, 1992. Nutrient transformations in sediments as influenced by oxygen supply. *Journal of Environmental Quality* 21: 387–393. <https://doi.org/10.2134/jeq1992.00472425002100030014x>.

Moreira-Santos, M., A. M. Soares & R. Ribeiro, 2004. An in situ bioassay for freshwater environments with the microalga *Pseudokirchneriella subcapitata*. *Ecotoxicology and Environmental Safety* 59: 164-173. <https://doi.org/10.1016/j.ecoenv.2003.07.004>

Mortimer, C. H., 1941. The exchange of dissolved substances between mud and water in lakes. *Journal of Ecology* 29: 280–329. <https://doi.org/10.2307/2256395>.

Mulder, A., A. A. Graaf, L. A. Robertson & J. G. Kuenen, 1995. Anaerobic ammonium oxidation discovered in a denitrifying fluidized bed reactor. *FEMS Microbiology Ecology* 16: 177–184. <https://doi.org/10.1111/j.1574-6941.1995.tb00281.x>.

Mulsow, S., B. P. Boudreau & J. A. Smith, 1998. Bioturbation and porosity gradients. *Limnology and Oceanography* 43: 1-9. <https://doi.org/10.4319/lo.1998.43.1.0001>.

Murphy, J. & J. P. Riley, 1962. A modified single solution method for the determination of phosphate in natural waters. *Analytica Chimica Acta* 27: 31–36. [https://doi.org/10.1016/S0003-2670\(00\)88444-5](https://doi.org/10.1016/S0003-2670(00)88444-5).

Nürnberg, G. K., M. Tarvainen, A. M. Ventelä & J. Sarvala, 2012. Internal phosphorus load estimation during biomanipulation in a large polymictic and mesotrophic lake. *Inland Waters* 2: 147e162. <https://doi.org/10.5268/IW-2.3.469>.

Paquet, N., N. Indiketi, C. Dalencourt, D. Larivière, S. Roberge, N. Gruyer, G. Triffault-Bouchet & C. Fortin, 2019. Toxicity of tailing leachates from a niobium mine toward three aquatic organisms. *Ecotoxicology and Environmental Safety* 176: 355-363. <https://doi.org/10.1016/j.ecoenv.2019.03.065>.

Pett-Ridge, J., D. G. Petersen, E. Nuccio & M. K. Firestone, 2013. Influence of oxic/anoxic fluctuations on ammonia oxidizers and nitrification potential in a wet tropical soil. *FEMS Microbiology Ecology* 85: 179-194. <https://doi.org/10.1111/1574-6941.12111>.

Prata, J. C., C. Venâncio, A. V. Girão, J. P. da Costa, I. Lopes, A. C. Duarte & T. Rocha-Santos, 2022. Effects of virgin and weathered polystyrene and polypropylene microplastics on *Raphidocelis subcapitata* and embryos of *Danio rerio* under environmental concentrations. *Science of The Total Environment* 816: 151642. <https://doi.org/10.1016/j.scitotenv.2021.151642>.

Rapin, A., M. Grybos, M. Rabiet, B. Mourier & V. Deluchat, 2019. Phosphorus mobility in dam reservoir affected by redox oscillations: An experimental study. *Journal of Environmental Science* 77: 250-263. <https://doi.org/10.1016/j.jes.2018.07.016>.

Real, M. & N. Prat, 1992. Factors influencing the distribution of chironomids and oligochaetes in profundal areas of Spanish reservoirs. *Netherland Journal of Aquatic Ecology* 26: 405-410. <https://doi.org/10.1007/BF02255269>.

Reddy, K. R. & R. D. DeLaune, 2008. *Biogeochemistry of wetlands: science and applications*. CRC Press, Boca Raton: 800.

Redfield, A. C., 1958. The biological control of chemical factors in the environment. *American Scientist* 46: 205–221. <https://www.jstor.org/stable/27827150>.

- Ronael Gilbert, E., M. Garcia de Camargo & L. Sandrini-Neto, 2014. Package rysgran. <https://www.rdocumentation.org/packages/rysgran/versions/2.1.0>.
- Ruban, V., S. Brigault, D. Demare & A. M. Philippe, 1999. An investigation of the origin and mobility of phosphorus in freshwater sediments from Bort-Les-Orgues Reservoir, France. *Journal of Environmental Monitoring* 1: 403-407. <https://doi.org/10.1039/A902269D>.
- Rydin, E., 2000. Potentially mobile phosphorus in Lake Erken sediment. *Water Research* 34: 2037–2042. [https://doi.org/10.1016/S0043-1354\(99\)00375-9](https://doi.org/10.1016/S0043-1354(99)00375-9).
- Rysgaard, S., N. Risgaard-Petersen, S. Niels Peter, J. Kim & N. Lars Peter, 1994. Oxygen regulation of nitrification and denitrification in sediments. *Limnology and Oceanography* 39: 1643–1652. <https://doi.org/10.4319/lo.1994.39.7.1643>.
- Shen, L. & Z. Chen, 2007. Critical review of the impact of tortuosity on diffusion. *Chemical Engineering Science* 62: 3748-3755. <https://doi.org/10.1016/j.ces.2007.03.041>.
- Silva, N. F. P., A. L. Gonçalves, F. C. Moreira, T. F. C. V. Silva, F. G. Martins, M. C. M. Alvim-Ferraz, R. A. R. Boaventura, V. J. P. Vilar & J. C. M. Pires, 2015. Towards sustainable microalgal biomass production by phycoremediation of a synthetic wastewater: A kinetic study. *Algal Research* 11: 350-358. <https://doi.org/10.1016/j.algal.2015.07.014>.
- Søndergaard, M., J. P. Jensen & E. Jeppesen, 2003. Role of sediment and internal loading of phosphorus in shallow lakes. *Hydrobiologia* 506: 135–145. <https://doi.org/10.1023/B:HYDR.0000008611.12704.dd>.
- Søndergaard, M., T. L. Lauridsen, L. S. Johansson & E. Jeppesen, 2017. Nitrogen or phosphorus limitation in lakes and its impact on phytoplankton biomass and submerged macrophyte cover. *Hydrobiologia* 795: 35–48. <https://doi.org/10.1007/s10750-017-3110-x>.

Steinman, A., R. Rediske & K. R. Reddy, 2004. The reduction of internal phosphorus loading using alum in Spring Lake, Michigan. *Journal of Environmental Quality* 33: 2040-2048. <https://doi.org/10.2134/jeq2004.2040>.

Steinman A. D., M. Ogdahl & X. Chu, 2009. Spatial and temporal variability of internal and external phosphorus loads in an urbanizing watershed. *Aquatic Ecology* 43:1–18. <https://doi.org/10.1007/s10452-007-9147-6>.

Steinman, A., M. Abdimalik, M. E. Ogdahl & M. Oudsema, 2016. Understanding planktonic vs. benthic algal response to manipulation of nutrients and light in a eutrophic lake. *Lake and Reservoir Management* 32: 402-409. <https://doi.org/10.1080/10402381.2016.1235065>.

Steinsberger, T., B. Müller, C. Gerber, B. Shafei & M. Schmid, 2019. Modeling sediment oxygen demand in a highly productive lake under various trophic scenarios. *PLOS ONE* 14: e0222318. <https://doi.org/10.1371/journal.pone.0222318>.

Suzuki, S., H. Yamaguchi, N. Nakajima & M. Kawachi, 2018. *Raphidocelis subcapitata* (= *Pseudokirchneriella subcapitata*) provides an insight into genome evolution and environmental adaptations in the Sphaeropleales. *Scientific Reports* 8: 8058. <https://doi.org/10.1038/s41598-018-26331-6>.

Thamdrup, B. & T. Dalsgaard, 2002. Production of N<sub>2</sub> through anaerobic ammonium oxidation coupled to nitrate reduction in marine sediments. *Applied and Environmental Microbiology* 68: 1312–1318. <https://doi.org/10.1128/AEM.68.3.1312-1318.2002>.

Tolhurst, T. J., M. G. Chapman, A. J. Underwood & J. J. Cruz, 2012. Technical note: The effects of five different defaunation methods on biogeochemical properties of intertidal sediment. *Biogeosciences* 9: 3647–3661. <https://doi.org/10.5194/bg-9-3647-2012>.

US EPA, 1991. Methods for measuring the acute toxicity of effluents and receiving waters to freshwater and marine organisms. EPA/600/4-90/027. Available at



[https://19january2017snapshot.epa.gov/sites/production/files/2015-08/documents/acute-freshwater-and-marine-wet-manual\\_2002.pdf](https://19january2017snapshot.epa.gov/sites/production/files/2015-08/documents/acute-freshwater-and-marine-wet-manual_2002.pdf)

Venâncio, C., E. Anselmo, A. Soares & I. Lopes, 2017. Does increased salinity influence the competitive outcome of two producer species? *Environmental Science and Pollution Research* 24: 5888–5897. <https://doi.org/10.1007/s11356-016-8346-x>

Watson, S. B., C. Miller, G. Arhonditsis, G. L. Boyer, W. Carmichael, M. N. Charlton, R. Confesor, D. C. Depew, T. O. Hook, S. A. Ludsin, G. Matisoff, S. P. McElmurry, M. W. Murray, R. P. Richards, Y. R. Rao, M. M. Steffen & S. W. Wilhelm, 2016. The re-eutrophication of Lake Erie: harmful algal blooms and hypoxia. *Harmful Algae* 56: 44–66. <https://doi.org/10.1016/j.hal.2016.04.010>.

Welch, E. & G. Denniscooke, 2005. Internal phosphorus loading in shallow lakes: importance and control. *Lake and Reservoir Management* 21: 209e217. <https://doi.org/10.1080/07438140509354430>.

Wetzel, R. G., 2001. The phosphorus cycle. *Limnology: lake and river ecosystems*. Academic Press, San Diego: 239–288. <https://doi.org/10.1016/B978-0-08-057439-4.50017-4>.

Yang, C., P. Yang, J. Geng, H. Yin & K. Chen, 2020. Sediment internal nutrient loading in the most polluted area of a shallow eutrophic lake (Lake Chaohu, China) and its contribution to lake eutrophication. *Environmental Pollution* 262: 114292. <https://doi.org/10.1016/j.envpol.2020.114292>

Zuur, A. F., E. N. Ieno & C. S. Elphick, 2010. A protocol for data exploration to avoid common statistical problems. *Methods in Ecology and Evolution* 1: 3–14. <https://doi.org/10.1111/j.2041-210X.2009.00001.x>.