



HAL
open science

SNAI2 and TWIST1 in lymph node progression in early stages of NSCLC patients

Camille Emprou, Pauline Le van Quyen, Jeremie Jegu, Nathalie Prim, Noëlle Weingertner, Eric Guerin, Erwan Pencreach, Michèle Legrain, Anne-Claire Voegeli, Charlotte Leduc, et al.

► To cite this version:

Camille Emprou, Pauline Le van Quyen, Jeremie Jegu, Nathalie Prim, Noëlle Weingertner, et al.. SNAI2 and TWIST1 in lymph node progression in early stages of NSCLC patients. *Cancer Medicine*, 2018, 7 (7), pp.3278-3291. 10.1002/cam4.1545 . hal-04558449

HAL Id: hal-04558449


<https://hal.science/hal-04558449>

Submitted on 24 Apr 2024

HAL is a multi-disciplinary open access archive for the deposit and dissemination of scientific research documents, whether they are published or not. The documents may come from teaching and research institutions in France or abroad, or from public or private research centers.

L'archive ouverte pluridisciplinaire **HAL**, est destinée au dépôt et à la diffusion de documents scientifiques de niveau recherche, publiés ou non, émanant des établissements d'enseignement et de recherche français ou étrangers, des laboratoires publics ou privés.

SNAI2 and *TWIST1* in lymph node progression in early stages of NSCLC patients

Camille Emprou¹  | Pauline Le Van Quyen¹ | Jérémie Jégu^{2,3} | Nathalie Prim⁴ |
 Noëlle Weingertner¹ | Eric Guérin^{3,5} | Erwan Pencreach^{3,5} | Michèle Legrain⁵ |
 Anne-Claire Voegeli⁵ | Charlotte Leduc⁴ | Bertrand Mennecier⁴ |
 Pierre-Emmanuel Falcoz⁶ | Anne Olland⁶ | Nicolas Santelmo⁶ | Elisabeth Quoix⁴ |
 Gilbert Massard⁶ | Dominique Guenot³ | Marie-Pierre Chenard¹ |
 Michèle Beau-Faller^{3,4,5}

¹Department of Pathology, Hôpital de Haute-pierre, University Hospital of Strasbourg, Strasbourg, France

²Department of Public Health, Nouvel Hôpital Civil, University Hospital of Strasbourg, Strasbourg, France

³EA3430: Tumoral Progression and Micro-environment, Translational and Epidemiological Approaches, Université de Strasbourg, Strasbourg, France

⁴Department of Pneumology, Nouvel Hôpital Civil, University Hospital of Strasbourg, Strasbourg, France

⁵Department of Molecular Biology, Oncobiology Laboratory, Regional Institute of Cancer Strasbourg, Hôpital de Haute-pierre, University Hospital of Strasbourg, Strasbourg, France

⁶Department of Thoracic Surgery, Nouvel Hôpital Civil, University Hospital of Strasbourg, Strasbourg, France

Correspondence

Camille Emprou, Department of Pathology, Hôpital de Haute-pierre, University Hospital of Strasbourg, Strasbourg, France.
 Email: camille.emprou@gmail.com

Abstract

Lymph node metastasis is an important prognosis factor in non-small cell lung cancer (NSCLC) patients. The aim of this study was to investigate the role of epithelial to mesenchymal transition (EMT) in lymph node progression in the early stages of NSCLC. We studied a retrospective cohort of 160 consecutive surgically treated NSCLC patients with available frozen tumor samples for expression of EMT markers (*CDH1*, *CTNNB1*, *CDH2*, and *VIMENTIN*), inducers (*TGFBI*, *c-MET*, and *CAIX*), and transcription factors (EMT-TF: *SNAI1*, *SNAI2*, *ZEB1*, *TWIST1*, and *TWIST2*). Partial EMT was more frequent in N1-2 (N+) vs N0 patients ($P < .01$). *TGFBI* ($P = .02$) as well as *SNAI2* ($P < .01$) and *TWIST1* ($P = .04$) were the most differentially expressed genes in N+ tumors. In this group, *ZEB1* was correlated with all EMT inducers and other EMT-TFs were overexpressed depending on the inducers. *CAIX* was an independent prognostic factor for overall survival (IC 95% HR: 1.10-5.14, $P = .03$). Partial EMT is involved in lymph node progression of NSCLC patients and depends on the TGF β pathway. EMT-TFs are differentially expressed depending on EMT inducers. *CAIX* might be a relevant prognostic marker in early stage NSCLC.

KEYWORDS

epithelial-mesenchymal transition, hypoxia, lymph node metastasis, nonsmall cell lung cancer, *SNAI2*, TGF β , *TWIST1*

1 | INTRODUCTION

Non-small cell lung cancer (NSCLC) is the leading cause of cancer-related death worldwide.¹ Surgical resection is the best treatment for early stage NSCLC patients (I to IIIA

UICC stage), which includes lymph node metastasis (N1, N2 status) or not (N0 status).^{2,3} Although surgery improves overall survival (OS), local relapse or distant metastasis is frequent and leads to mortality.⁴ Lymph node status is an independent prognostic factor of NSCLC, but the mechanisms

This is an open access article under the terms of the Creative Commons Attribution License, which permits use, distribution and reproduction in any medium, provided the original work is properly cited.

© 2018 The Authors. *Cancer Medicine* published by John Wiley & Sons Ltd.

underlying progression from N0 status to N+ status remain poorly understood.⁵

During embryonic development, polarized epithelial cells can undergo morphological changes to mesenchymal cells by so-called epithelial-mesenchymal transition (EMT). These cells lose their epithelial features to become mesenchymal-like cells, without cell-to-cell contacts.⁶ EMT also occurs in inflammatory processes and in cancer progression, in which EMT could be involved in invasion, migration, and anti-apoptotic features as well as drug resistance.⁷ EMT is reversible, via mesenchymal-epithelial transition (MET), which could occur in metastatic localizations.⁸

The EMT phenotype can be described analyzing epithelial markers, such as E-Cadherin and β -Catenin, and mesenchymal markers, such as N-Cadherin and Vimentin.^{6,9} E-Cadherin depletion leads to nuclear relocalization of β -Catenin, supporting EMT.^{10,11} EMT effectors are also called EMT transcriptional factors (EMT-TFs). These proteins are transcriptional repressors of epithelial markers, such as *CDH1*, which encodes the E-cadherin protein, and/or transcriptional activators of mesenchymal markers, such as *CDH2*, which encodes the N-Cadherin protein.^{4,12-15} EMT-TF are represented by the zinc-finger proteins SNAI1 (SNAIL), SNAI2 (SLUG), ZEB1, and ZEB2 as well as the basic helix-loop-helix factors TWIST1 and TWIST2, among others.^{6,14} EMT inducers include several signaling pathways, such as TGF β , epithelial growth factor (EGF), hepatocyte growth factor (HGF), and its receptor c-MET, AKT-mTOR, MAPK/ERK, NF- κ B, Wnt, Hedgehog, Notch, or hypoxia.¹²

In NSCLC, EMT could be an important process for development of local lymph nodes or distant metastasis.¹⁶⁻¹⁸ To our knowledge, this is the first systematic analysis of different EMT actors in early stage NSCLC depending on the lymph node status, which is the first step for lung tumor progression. The aim of this retrospective study was to describe some EMT markers, effectors, and inducers in a retrospective cohort of early stage NSCLC by comparing N0 and N+ patients.

2 | PATIENTS AND METHODS

2.1 | Patients and tumor tissue samples

We retrospectively reviewed all consecutive NSCLC patients treated by surgery between January 2010 and December 2012 at the University Hospital of Strasbourg, France (Figure S1). We selected patients for which sufficient formalin-fixed paraffin-embedded (FFPE) material and frozen sections of the tumor were available, with a tumor cellularity beyond 30% of tumor cells. Research was conducted according to the recommendations outlined in the Helsinki Declaration. Patients provided signed consent, and approval from the Institutional Review Board was obtained (Comité d'Ethique du CHU de Strasbourg, 4, rue Kirschleger, 67085 Strasbourg Cedex,

France, N° 2013-35, Pr. B. Geny, obtained October 8th, 2013). Patients were separated in two groups depending on lymph node status: the N0 group of patients without lymph node metastasis and N+ group of patients with lymph node metastasis (N1 or N2 status). Clinical data concerning age, gender, smoking history, chemotherapy, or EGFR Tyrosine Kinase Inhibitors (TKI) treatment, recurrence, and death were collected. A nonsmoker patient was defined as smoking less than 100 cigarettes in a lifetime. Pathological staging was based on the TNM (Tumor-Node-Metastasis) guidelines of the UICC (Union for International Cancer Control) 7th edition for the classification of lung cancer.⁵ NSCLC were classified according to the 2004 WHO classification.¹⁹ Adenocarcinomas (ADC) were re-classified according to recent IASLC/ATS/ERS recommendations.²⁰ Follow-up was completed on 1 April 2015, which was defined as the deadline date.

2.2 | Immunohistochemical analysis

Formalin-fixed paraffin-embedded blocks representative of the tumor were selected. Four micrometer sections were obtained from paraffin blocks. Two primary monoclonal antibodies were used: a c-MET rabbit monoclonal antibody (SP44 clone, pre-diluted, Roche Tissue Diagnostics/Ventana Medical Systems, Tucson, AZ, USA) and carbonic anhydrase IX (CAIX) rabbit polyclonal antibody (Ab15086 clone, 1/1000, Cambridge, MA, USA). Immunohistochemistry (IHC) was performed using a Ventana Benchmark IHC platform. Subsequent steps were performed with the UltraView Universal DAB Detection Kit (Roche Tissue Diagnostics/Ventana Medical Systems, Tucson, AZ, USA). Two pathologists (CE, PLVQ) independently graded the staining intensity of all tumors. For each tumor specimen, the results from the two pathologists were averaged, and if the difference was over 10%, common reading and grading were performed. For c-MET, the following intensity scores were assigned: no signal, 0; weak complete membranous signal, 1; moderate complete membranous signal (similar to normal alveolar epithelium), 2; and intense complete membranous signal, 3. For CAIX, the following intensity scores were assigned: no signal, 0; weak cytoplasmic and/or membranous signal, 1; moderate cytoplasmic and/or membranous signal, 2; and intense cytoplasmic and/or membranous signal, 3. The fraction of stained cells was determined for each intensity score. For c-MET and CAIX, the tumor was considered positive (protein overexpression) if 50% or more tumor cells were labeled with intensity scores of 2 or 3.

2.3 | EGFR, KRAS, BRAF, HER2, and PIK3CA mutational status and ALK gene rearrangement analysis

Molecular analyses were performed on FFPE tumor samples as previously described.²¹

2.4 | Real-time quantitative reverse transcription PCR (RT-qPCR)

After morphological control for the presence of $\geq 30\%$ tumor cells on H&E tissue sections, total RNA was extracted from frozen samples of each tumor with TRIzol reagent according to the manufacturer's protocol (Thermo Fisher Scientific, Waltham, MA, USA). Nontumoral frozen lung tissues ($n = 10$) were used for relative qPCR. The integrity of total RNA (RIN) was verified in all samples with an Agilent 2100 Bioanalyser (Agilent Technologies, Santa Clara, CA, USA). RNA quantification was performed by spectrophotometry (Nanodrop 2000, Thermo Fisher Scientific, Waltham, MA, USA), and complementary DNA (cDNA) was synthesized by reverse transcription (RT) from 1 μg of total RNA with the Superscript VILO cDNA Synthesis Kit (Thermo Fisher Scientific, Waltham, MA, USA). The following genes were studied: *CDH1*, *CDH2*, *CTNNB1*, *VIMENTIN*, *SNAI1*, *SNAI2*, *ZEB1*, *TWIST1*, *TWIST2*, *TGFB1*, *TGFBRI*, *TGFBRI2*, *c-MET*, *HIF1 α* , and *HIF2 α* , and normalized with the reference gene *PBGD* (QuantiTect Primer, Qiagen, Hilden, Germany). Quantitative real-time polymerase chain reaction (qPCR) was performed using the QuantiTect SYBR Green PCR Kit (Qiagen, Hilden, Germany) in a total volume of 10 μL on a Roche LightCycler 480 Real-Time PCR System (Roche Diagnostics, Indianapolis, IN, USA). Real-time qPCR was performed under the following conditions: denaturation at 94°C for 15 seconds, annealing at 55°C for 30 seconds and extension at 72°C for 30 seconds. The experiments were performed in triplicate. The relative levels of gene expression were represented as $\Delta\text{Ct} = \text{Ct}_{\text{target gene}} - \text{Ct}_{\text{reference gene}}$, and the relative ratios of gene expression between NSCLC tissues and a pool of nontumorous lung tissues were calculated by the $2^{-\Delta\Delta\text{Ct}}$ method. For *CDH1* and *CTNNB1*, gene expression was considered lost when the relative ratio values were lower than 0.5. For all other genes, overexpression was defined by a relative ratio above 2. For EMT phenotype analysis, partial EMT was defined by normal E-Cadherin expression with N-Cadherin overexpression, while total EMT was defined by E-Cadherin loss of expression combined with N-Cadherin overexpression.

2.5 | Statistical analysis

The association of the clinical and pathological characteristics with the IHC and RT-qPCR results was analyzed using the chi-square test and Fisher's exact test. Overall survival (OS) was defined as the period of time from the date of surgery to the date of death or defined deadline date (1 April 2015). Relapse-free survival (RFS) was defined as the period of time from the date of surgery to the date of relapse or defined deadline date. The Kaplan-Meier method was used to calculate RFS or OS, and the survival curves were compared

using the Log-rank test. Univariate and multivariate analyses were performed using Cox proportional hazards models. All factors with a value of $P \leq .05$ in univariate analysis were included in the multivariate analyses. In the analyses, $P \leq .05$ was considered statistically significant. Statistical analyses were performed using the IBM SPSS Statistics 20.0 software for windows (IBM Corp, Armonk, NY, USA).

3 | RESULTS

3.1 | Clinical, pathological, and molecular characteristics of patients

There were 138 smokers (86%) and 18 (11%) never smokers (Table 1). Histological analysis reported 116 (72%) cases of adenocarcinomas (ADC), 38 (24%) cases of squamous cell carcinomas (SCC), and six (4%) cases of other types of carcinomas. Lymph node metastasis (N+) was present in 80 (50%) patients, with N1 and N2 status in 39% and 41% cases, respectively. Molecular analysis showed 15 (9%) tumors with *EGFR* mutations (four deletions, eight L858R mutations, and four other *EGFR* mutations) and 51 (32%) tumors with *KRAS* mutations (40 codon 12 mutations and 11 codon 13 mutations); the other mutations were rare (two *BRAF* V600E mutations, one *HER2* insertion, and four *PIK3CA* mutations). No *ALK* rearrangement was found. When comparing the N0 group with the N+ group, more SCC cases were present in the N+ group ($n = 26$ in N+ vs $n = 12$ in N0, respectively, $P = .02$). N+ patients received more frequently neoadjuvant chemotherapy (14 vs 6 in N+ and N0, respectively, $P = .05$) and EGFR TKI treatment (15 vs 6 in N+ and N0, respectively, $P = .04$).

3.2 | Expression of EMT markers and effectors according to lymph node status

Most of the tumors presented epithelial marker expression; 132 (92%) tumors presented *CDH1* (E-Cadherin) expression, and 131 (92%) tumors presented *CTNNB1* (β -Catenin) expression (Table 2). *CDH1* and *CTNNB1* expression were not different in the N0 compared to the N+ group of tumors. Mesenchymal EMT marker analyses showed that 71 (50%) tumors presented *CDH2* (N-Cadherin) overexpression and 18 (13%) tumors presented *VIMENTIN* overexpression. *CDH2* overexpression was significantly more frequent in the N+ group compared to the N0 group ($n = 43$, 60% vs $n = 28$, 39%, $P = .01$), and similar results were found for *VIMENTIN* overexpression ($n = 13$, 18% in the N+ group vs $n = 5$, 7% in the N0 group, $P = .04$). Partial EMT was observed in half of the tumors ($n = 70$, 49%) and only one tumor presented a total EMT phenotype (in the N+ group—data not shown). Finally, tumors with partial EMT were more frequently described in the N+ group than in the N0

TABLE 1 Clinical, pathological, and molecular characteristics of patients

	All patients	N0	N+	P value
Total N (%)	160 (100)	80 (50)	80 (50)	
Clinical features				
Age at diagnosis				
≤60 y	66 (41)	31 (39)	35 (44)	NS
>60 y	94 (59)	49 (61)	45 (56)	
Gender				
Male	109 (68)	55 (69)	54 (68)	NS
Female	51 (32)	25 (31)	26 (32)	
Smocking history				
Never smoked	18 (11)	9 (11)	9 (11)	NS
Ex-smoker	62 (39)	24 (30)	38 (47)	
Current smoker	76 (47)	45 (56)	31 (39)	
Unknown	4 (3)	2 (3)	2 (3)	
Neoadjuvant chemotherapy				
No	140 (87)	74 (93)	66 (82)	.05
Yes	20 (13)	6 (7)	14 (18)	
TKI treatment				
No	128 (80)	67 (84)	61 (76)	.04
Yes	21 (13)	6 (7)	15 (19)	
Unknown	11 (7)	7 (9)	4 (5)	
Pathological features				
Histology				
Adenocarcinomas	116 (72)	64 (80)	52 (64)	.02
Solid predominant	39 (24)	19 (24)	20 (25)	
Acinar predominant	48 (30)	22 (28)	26 (33)	
Papillary predominant	6 (4)	4 (5)	2 (2)	
Micropapillary predominant	9 (6)	7 (9)	2 (2)	
Lepidic predominant	10 (6)	8 (10)	2 (2)	
Mucinous predominant	2 (1)	2 (2)	0 (0)	
Colloid predominant	2 (1)	2 (2)	0 (0)	
Squamous cell carcinomas	38 (24)	12 (15)	26 (33)	
Others ^a	6 (4)	4 (5)	2 (3)	
pT-Stage				
1	39 (24)	25 (31)	14 (18)	NS
2	67 (42)	34 (42)	33 (41)	
3	43 (27)	15 (19)	28 (35)	
4	11 (7)	6 (8)	5 (6)	
Thoracic UICC Stage				
IA	25 (16)	25 (31)	0 (0)	<.001
IB	28 (17)	28 (35)	0 (0)	
IIA	26 (16)	6 (7)	20 (25)	
IIB	16 (10)	15 (19)	1 (1)	
IIIA	62 (39)	6 (8)	56 (70)	
IIIB	3 (2)	0 (0)	3 (4)	

(Continues)

TABLE 1 (Continued)

	All patients	N0	N+	P value
Molecular features				
Mutation status				
EGFR mutation	15 (9)	8 (9)	7 (9)	NS
KRAS mutation	51 (32)	28 (35)	23 (29)	
BRAF mutation	2 (1)	0 (0)	2 (2)	
HER2 mutation	1 (1)	0 (0)	1 (1)	
PIK3CA mutation	4 (3)	5 (5)	1 (1)	
ALK rearrangement	0 (0)	0 (0)	0 (0)	
Wild type	87 (54)	41 (51)	46 (58)	

^aTwo adenosquamous carcinomas and five nonsmall cell carcinomas with neuroendocrine features.

N0 = Patients with lymph node tumor status N0; N+ = Patients with lymph node tumor status N1 or N2; TKI = EGFR Tyrosine kinase inhibitor; NS = Not significant; *P*-value <.05 statistically significant.

group ($n = 43$, 60% vs $n = 27$, 38%, $P < .01$). Among the EMT effectors analyzed, *TWIST1* was the most frequently overexpressed EMT-TF ($n = 105$, 73%), while *ZEB1* was the least overexpressed EMT-TF ($n = 9$, 6%). *TWIST1* was more frequently overexpressed in the N+ group compared to the N0 group ($n = 58$, 81% vs $n = 47$, 66%, respectively, $P = .04$). *SNAI2* was also more frequently overexpressed in the N+ group compared to the N0 group ($n = 47$, 65% vs $n = 29$, 41%, respectively, $P < .01$).

3.3 | Expression of EMT inducers according to lymph node status

The *TGFBI* (*TGFβ*), *TGFBRI*, and *TGFBR2* genes were overexpressed in 47 (33%), 46 (32%), and 8 (6%) tumors, respectively (Table 2). *TGFBI* was more frequently overexpressed in the N+ group of tumors compared to the N0 group ($n = 30$, 42% vs $n = 17$, 24%, respectively, $P = .02$). C-MET was shown to be overexpressed in 75 (52%) tumors by immunohistochemistry as well as RT-qPCR analysis (Figure S2). CAIX protein was shown to be overexpressed in 15 (9%) tumors by immunohistochemistry. *HIF1α* and *HIF2α* overexpression were reported in 88 (62%) cases and 1 (1%) tumor, respectively. Neither c-MET and CAIX protein nor *HIF1α* or *HIF2α* overexpression were associated with lymph node status.

3.4 | Correlations between *SNAI2* and *TWIST1* expression and EMT markers according to lymph node status

As *SNAI2* was more frequently overexpressed in N+ compared to N0 tumors, we analyzed the EMT phenotype depending on *SNAI2* expression (Table 3). Epithelial markers were conserved in N+ tumors overexpressing *SNAI2*, suggesting a partial EMT phenotype. Indeed, mesenchymal markers were more often overexpressed when *SNAI2* expression

was increased. *SNAI2* overexpression was significantly correlated with *CDH2* or *VIMENTIN* overexpression in the whole group, ($P \leq .001$). Both correlations were observed in the N+ group ($P = .003$ and $P = .002$, respectively). In the N0 group, only *CDH2* overexpression was correlated with *SNAI2* overexpression ($P = .001$). *SNAI2* overexpression was significantly correlated with partial EMT features in the whole group ($P < .001$) as well as in the N0 or N+ groups ($P = .003$). In summary, *SNAI2* overexpression was correlated with partial EMT, which was more often observed in the N+ group and was particularly correlated with *CDH2* and *VIMENTIN* overexpression in the N+ group. As *TWIST1* was more frequently overexpressed in N+ tumors compared to N0 tumors, we also analyzed the EMT phenotype depending on *TWIST1* expression (Table 3). No correlation was observed between *TWIST1* overexpression and EMT epithelial marker expression, but mesenchymal markers were more often overexpressed when *TWIST1* expression was increased. Indeed, *TWIST1* overexpression was correlated with *VIMENTIN* overexpression in the N+ group of tumors ($P = .05$) and with *CDH2* overexpression in the N0 group of tumors ($P < .001$). Finally, *TWIST1* overexpression was associated with an increased number of tumors with a partial EMT phenotype, which were more frequent in the N+ group of tumors ($n = 37$, 64%) compared to the N0 group of tumors ($n = 26$, 55%).

3.5 | Correlations between *TGFBI*, c-MET, and CAIX expression and EMT markers/ effectors according to lymph node status

As *TGFBI* was more frequently overexpressed in N+ tumors compared to N0 tumors, we analyzed the population depending on the expression of *TGFBI*, one of the best inducers of EMT (Table 4). *TGFBI* overexpression was correlated with the overexpression of the mesenchymal markers *CDH2* and *VIMENTIN* ($P < .001$) and, consequently, with partial EMT

TABLE 2 Expression of EMT markers, effectors, and inducers according to lymph node status

	All patients	N0	N+	P value
Total N (%)	143 (100)	71 (50)	72 (50)	
EMT markers ^a				
<i>CDH1</i> (E-Cadherin)	132 (92)	67 (94)	65 (90)	NS
<i>CTNNB1</i> (β-Catenin)	131 (92)	68 (96)	63 (88)	NS
<i>CDH2</i> (N-Cadherin)	71 (50)	28 (39)	43 (60)	.01
<i>VIMENTIN</i>	18 (13)	5 (7)	13 (18)	.04
Partial EMT	70 (49)	27 (38)	43 (60)	<.01
EMT effectors ^a				
<i>SNAI1</i>	34 (24)	13 (18)	21 (29)	NS
<i>SNAI2</i>	76 (53)	29 (41)	47 (65)	<.01
<i>ZEB1</i>	9 (6)	2 (3)	7 (10)	NS
<i>TWIST1</i>	105 (73)	47 (66)	58 (81)	.04
<i>TWIST2</i>	32 (22)	12 (17)	20 (28)	NS
EMT inducers ^a				
TGFβ markers				
<i>TGFB1</i>	47 (33)	17 (24)	30 (42)	.02
<i>TGFBR1</i>	46 (32)	22 (31)	24 (33)	NS
<i>TGFBR2</i>	8 (6)	4 (6)	4 (6)	NS
c-MET markers				
c-MET IHC ^b	75 (52)	38 (47)	37 (46)	NS
<i>c-MET</i>	75 (52)	36 (51)	39 (54)	NS
Hypoxia markers				
CAIX IHC ^b	15 (9)	7 (9)	8 (10)	NS
<i>HIF1α</i>	88 (62)	44 (62)	44 (61)	NS
<i>HIF2α</i>	1 (1)	1 (1)	0 (0)	NS

^aPreserved expression for *CDH1* and *CTNNB1* genes, overexpression for the other genes.

^bIHC: Immunohistochemistry scoring system for c-MET and CAIX proteins: overexpression if ≥50% (intensity scores 2 + 3) of labeled tumors cells.

IHC performed on n = 160 tumors. EMT = Epithelial-mesenchymal transition; N0 = Patients with lymph node tumor status N0; N+ = Patients with lymph node tumor status N1 or N2; Partial EMT = overexpression of *CDH2* with normal expression of *CDH1*; CAIX = Carbonic anhydrase IX; NS = Not significant; P-value <.05 statistically significant.

($P < .001$). In the N+ group of tumors, *TGFB1* overexpression was correlated with the expression of epithelial markers (*CDH1*, $P = .02$ and *CTNNB1*, $P = .05$), overexpression of mesenchymal markers (*CDH2*, $P = .001$ and *VIMENTIN*, $P < .001$) and, consequently, with partial EMT ($P < .001$). When *TGFB1* was overexpressed, partial EMT was more often reported in the N+ group (n = 25, 83%) than in the N0 group (n = 11, 65%). In the entire cohort, EMT-TF overexpression (*SNAI1*, *SNAI2*, *ZEB1*, *TWIST1*, and *TWIST2*) was correlated with *TGFB1* overexpression. By subgroup analysis, EMT-TF was differentially correlated with *TGFB1* overexpression, depending on the N status. Indeed, *ZEB1* overexpression alone was correlated with *TGFB1* overexpression only in the N+ group ($P = .02$). In summary, *TGFB1* overexpression was more frequently observed in the N+ group as well as correlated with partial EMT in the

N0 group and especially in the N+ group. The correlation of *TGFB1* overexpression with EMT-TF appeared to be different between the N0 and N+ groups, with *ZEB1* involvement in the latter.

We also analyzed two other potential inducers of EMT, *c-MET*, and hypoxia (explored by CAIX protein expression) (Tables S1 and S2, Figure S2). *C-MET* overexpression was correlated with EMT epithelial marker expression and overexpression of *VIMENTIN*, especially in the N+ group of tumors ($P = .002$). When *c-MET* was overexpressed, partial EMT was more frequent in the N+ group (n = 25, 64%) compared to the N0 group of tumors (n = 16, 44%). No EMT-TF was correlated with *c-MET* overexpression in the N0 group of tumors, while *SNAI1* and *ZEB1* overexpression was correlated with *c-MET* overexpression in the N+ group ($P = .02$ and $P = .01$, respectively). CAIX

TABLE 3 Correlations between *SNAI2* and *Twist1* expression and EMT markers according to lymph node status

	All patients		N0		N+				
	143 (100)		71 (50)		72 (50)				
<i>SNAI2</i> expression	Normal (n = 67)	Overexpressed (n = 76)	P value	Normal (n = 42)	Overexpressed (n = 29)	P value	Normal (n = 25)	Overexpressed (n = 47)	P value
<i>CDH1</i> (E-Cadherin)									
Preserved	60 (90)	72 (95)	NS	40 (95)	27 (93)	NS	20 (80)	45 (96)	.05
Decreased	7 (10)	4 (5)		2 (5)	2 (7)		5 (20)	2 (4)	
<i>CTNNB1</i> (β-Catenin)									
Preserved	60 (90)	71 (93)	NS	41 (98)	27 (93)	NS	19 (76)	44 (94)	.04
Decreased	7 (10)	5 (7)		1 (2)	2 (7)		6 (24)	3 (6)	
<i>CDH2</i> (N-Cadherin)									
Normal	48 (72)	24 (32)	<.001	32 (76)	11 (38)	.001	16 (64)	13 (28)	.003
Overexpressed	19 (28)	52 (68)		10 (24)	18 (62)		9 (36)	34 (72)	
<i>VIMENTIN</i>									
Normal	66 (99)	59 (78)	<.001	41 (98)	25 (86)	NS	25 (100)	34 (72)	.002
Overexpressed	1 (1)	17 (22)		1 (2)	4 (14)		0 (0)	13 (28)	
Partial EMT									
No partial EMT	48 (72)	25 (33)	<.001	32 (76)	12 (41)	.003	16 (64)	13 (28)	.003
Partial EMT	19 (28)	51 (67)		10 (24)	17 (59)		9 (36)	34 (72)	
<i> Twist1</i> expression									
	Normal (n = 38)	Overexpressed (n = 105)	P value	Normal (n = 24)	Overexpressed (n = 47)	P value	Normal (n = 14)	Overexpressed (n = 58)	P value
<i>CDH1</i> (E-Cadherin)									
Preserved	34 (90)	98 (93)	NS	22 (92)	45 (96)	NS	12 (86)	53 (91)	NS
Decreased	4 (10)	7 (7)		2 (8)	2 (4)		2 (14)	5 (9)	
<i>CTNNB1</i> (β-Catenin)									
Preserved	34 (90)	97 (92)	NS	23 (96)	45 (96)	NS	11 (79)	52 (90)	NS
Decreased	4 (10)	8 (8)		1 (4)	2 (4)		3 (21)	6 (10)	
<i>CDH2</i> (N-Cadherin)									
Normal	31 (82)	41 (39)	<.001	23 (96)	20 (43)	<.001	8 (57)	21 (36)	NS
Overexpressed	7 (18)	64 (61)		1 (4)	27 (57)		6 (43)	37 (64)	
<i>VIMENTIN</i>									
Normal	36 (95)	89 (85)	NS	22 (92)	44 (94)	NS	14 (100)	45 (78)	.05
Overexpressed	2 (5)	16 (15)		2 (8)	3 (6)		0 (0)	13 (22)	
Partial EMT									
No partial EMT	31 (82)	42 (40)	<.001	23 (96)	21 (45)	<.001	8 (57)	21 (36)	NS
Partial EMT	7 (18)	63 (60)		1 (4)	26 (55)		6 (43)	37 (64)	

EMT = Epithelial-mesenchymal transition; N0 = Patients with lymph node tumor status N0; N+ = Patients with lymph node tumor status N1 or N2; Partial EMT = overexpression of *CDH2* with normal expression of *CDH1*; NS = Not significant; P-value <.05 statistically significant.

TABLE 4 Correlations between *TGFβ*/expression and EMT markers/effectors according to lymph node status

Total N (%)	All patients		N0		N+				
	143 (100)		71 (50)		72 (50)				
	Normal (n = 96)	Overexpressed (n = 47)	Normal (n = 54)	Overexpressed (n = 17)	Normal (n = 42)	Overexpressed (n = 30)			
<i>TGFβ</i> expression		P value				P value			
<i>CDH1</i> (E-Cadherin)									
Preserved	85 (89)	47 (100)	.01	50 (93)	17 (100)	NS	35 (83)	30 (100)	.02
Decreased	11 (11)	0 (0)		4 (7)	0 (0)		7 (17)	0 (0)	
<i>CTNNB1</i> (β-Catenin)									
Preserved	85 (89)	46 (98)	.05	51 (94)	17 (100)	NS	34 (81)	29 (97)	.05
Decreased	11 (11)	1 (2)		3 (6)	0 (0)		8 (19)	1 (3)	
<i>CDH2</i> (N-Cadherin)									
Normal	61 (64)	11 (23)	<.001	37 (69)	6 (35)	.02	24 (57)	5 (17)	.001
Overexpressed	35 (36)	36 (77)		17 (31)	11 (65)		18 (43)	25 (83)	
<i>VIMENTIN</i>									
Normal	94 (98)	31 (66)	<.001	53 (98)	13 (76)	.01	41 (98)	18 (60)	<.001
Overexpressed	2 (2)	16 (34)		1 (2)	4 (24)		1 (2)	12 (40)	
Partial EMT									
No partial EMT	62 (65)	11 (23)	<.001	38 (70)	6 (35)	.01	24 (57)	5 (17)	<.001
Partial EMT	34 (35)	36 (77)		16 (30)	11 (65)		18 (43)	25 (83)	
<i>SNAI1</i>									
Normal	84 (88)	25 (53)	<.001	48 (89)	10 (59)	.01	36 (86)	15 (50)	.001
Overexpressed	12 (12)	22 (47)		6 (11)	7 (41)		6 (14)	15 (50)	
<i>SNAI2</i>									
Preserved	60 (63)	7 (15)	<.001	37 (69)	5 (29)	.005	23 (55)	2 (7)	<.001
Decreased	36 (37)	40 (85)		17 (31)	12 (71)		19 (45)	28 (93)	
<i>ZEB1</i>									
Normal	94 (98)	40 (85)	.006	53 (98)	16 (94)	NS	41 (98)	24 (80)	.02
Overexpressed	2 (2)	7 (15)		1 (2)	1 (6)		1 (2)	6 (20)	
<i>TWIST1</i>									
Normal	32 (33)	6 (13)	.006	21 (39)	3 (18)	NS	11 (26)	3 (10)	NS
Overexpressed	64 (67)	41 (87)		33 (61)	14 (82)		31 (74)	27 (90)	
<i>TWIST2</i>									
Normal	82 (85)	29 (62)	.002	48 (89)	11 (65)	.03	34 (81)	18 (60)	.05
Overexpressed	14 (18)	18 (38)		6 (11)	6 (35)		8 (19)	12 (40)	

EMT = Epithelial-mesenchymal transition; N0 = Patients with lymph node tumor status N0; N+ = Patients with lymph node tumor status N1 or N2; Partial EMT = overexpression of *CDH2* with normal expression of *CDH1*; NS = Not significant; *P*-value <.05 statistically significant.

All patients (N = 160)	Relapse-free survival			Overall survival		
	HR	95% CI	P value	HR	95% CI	P value
Gender: female vs male	1.10	0.66-1.82	.72	1.03	0.56-1.89	.92
Age at diagnosis: >60 vs ≤60 y	1.11	0.69-1.81	.65	1.03	0.58-1.81	.91
UICC stage: I-II vs III	2.20	1.37-3.53	.001	1.62	0.92-2.86	.10
Neoadjuvant chemotherapy: yes vs no	1.88	1.02-3.45	.04	2.09	1.06-4.12	.03
IHC ^a CAIX positive vs negative	2.99	1.58-5.65	.001	2.38	1.10-5.14	.03

^aIHC: Immunohistochemistry scoring system for CAIX protein, positive if ≥50% (intensity scores 2 + 3) of labeled tumors cells, negative if <50% (intensity scores 2 + 3) of labeled tumor cells. HR, Hazard Ratio; CI, Confidence Interval; P-value <.05 statistically significant.

protein overexpression was correlated with overexpression of the mesenchymal marker *CDH2* only in the N+ group ($P = .01$). Moreover, all cases of N+ tumors overexpressing CAIX presented a partial EMT phenotype. No EMT-TF was correlated with CAIX overexpression in the N0 group of tumors, while *SNAI2* and *ZEB1* overexpression was correlated with CAIX overexpression in the N+ group ($P = .03$). In summary, *c-MET* and CAIX overexpression was associated with mesenchymal markers more often in the N+ group. Finally, some EMT-TFs were correlated with overexpression of the EMT inducers *c-MET* or CAIX only in the N+ group of tumors.

3.6 | Survival analysis

The median time of clinical follow-up of patients was 37 months (range 1-63 months). In univariate analysis, neither EMT markers nor EMT effectors were observed as prognostic factors in the present study (Table 5) (Table S3). The EMT inducer CAIX protein was a bad prognostic factor for RFS and OS ($P = .003$ and $P = .05$, respectively). Indeed, there was a significant decrease in RFS for patients with tumors overexpressing CAIX (median RFS time is 9 months vs 42 months, $P = .002$), and the same results were observed for OS (median OS time is 27 months vs not reached, $P = .048$) (Figure 1). In multivariate analyses, CAIX was an independent prognostic factor (HR 2.99, 95% CI: 1.58-5.65, $P = .001$ for RFS and HR 2.38, 95% CI: 1.10-5.14, $P = .03$ for OS).

4 | DISCUSSION

Epithelial to mesenchymal transition may be involved in cancer progression and in lymph node progression of NSCLC. Previous studies have been conducted to assess individual EMT markers in NSCLC, but to our knowledge, no studies have examined several EMT markers

simultaneously. In the present study, we investigated the expression of EMT markers, effectors, and inducers in early stage NSCLC and separated tumors into N0 and N+ groups to describe their combined role in the development of lymph node metastasis. E-Cadherin and β -Catenin are classical markers for the epithelial phenotype. The present results showed that the majority of tumors had conserved expression of the epithelial markers *CDH1* (92%) and *CTNNB1* (92%). Previous studies on E-Cadherin expression in NSCLC tested by immunohistochemistry report conserved protein expression ranging from 32% to 88% in tumors depending on the IHC cutoff value.²²⁻²⁹ Moreover, an association of E-Cadherin loss of IHC expression and the N+ status of patients was reported in several stages I to IV NSCLC cohorts.^{23,24,28-33} Two other studies that analyzed *CDH1* expression in stage I to III NSCLC tumors reported an opposite association between *CDH1* expression and N status, with one study reporting preserved *CDH1* expression and the other study reporting lost *CDH1* expression.^{34,35} In summary, loss of epithelial markers, such as *CDH1* and *CTNNB1*, was a rare event in the present early stage NSCLC cohort.

Vimentin is a key marker of the mesenchymal phenotype.⁹ N-Cadherin is less used, but it is interesting to analyze its expression combined with E-Cadherin to follow the “Cadherin switch” of EMT.⁹ The present results show overexpression of *CDH2* and *VIMENTIN* in 50% and 13% of tumors, respectively, with a correlation with N+ status. Expression of N-Cadherin in NSCLC has been studied by IHC in several NSCLC cohorts, with 9% to 43% of tumors showing overexpression.^{22,36-38} IHC expression of *VIMENTIN* was also previously investigated in NSCLC, with 7%-66% of overexpression depending on the IHC cutoff value.^{16,24,27,29,30,38-45} One study quantified *CDH2* expression by RT-qPCR in 30 NSCLC (stages I to IV) and found that 67% of tumors had N-Cadherin overexpression, with a bad prognosis value.³⁷ Four studies have found an association between *VIMENTIN* IHC overexpression and N+

TABLE 5 Multivariate Cox model analysis for relapse-free survival and overall survival

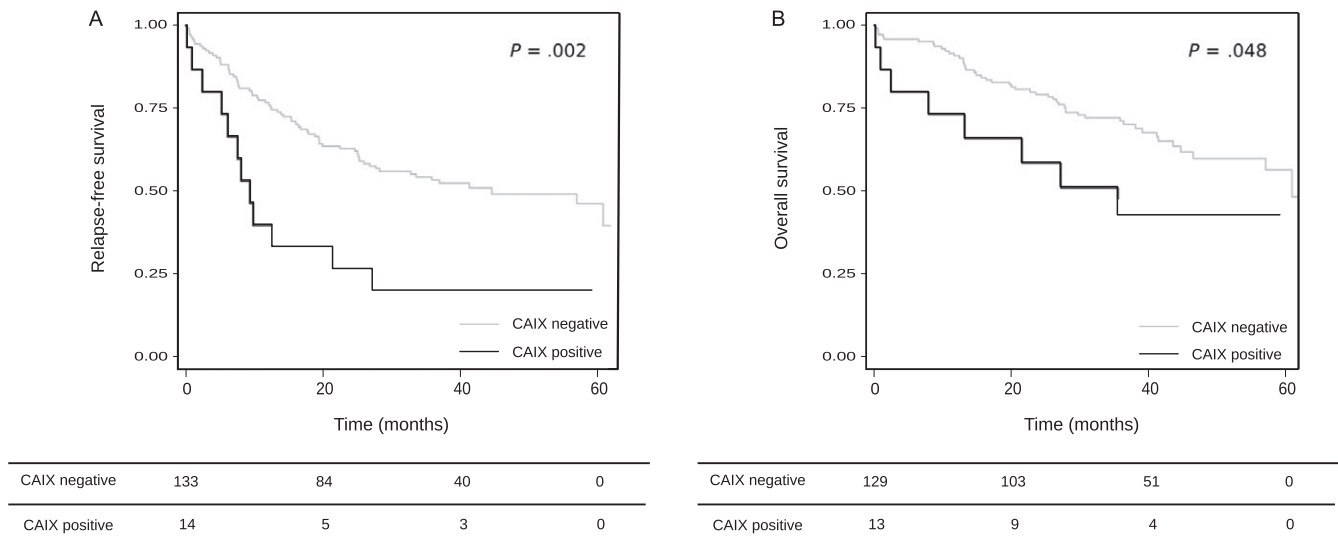


FIGURE 1 Relapse-free survival (A) and Overall survival (B) and CAIX expression. Median time of clinical follow-up: 37 mo (range 1-63 mo). Median RFS time: 9 mo (CAIX positive) vs 42 mo (CAIX negative), $P = .002$. Median OS time: 27 mo (CAIX positive) vs not reached (CAIX negative), $P = .048$. CAIX: Carbonic anhydrase IX. Immunohistochemistry scoring system for CAIX protein: negative if $<50\%$ (intensity scores 2 + 3) of labeled tumor cells, positive if $\geq 50\%$ (intensity scores 2 + 3) of labeled tumors cells

status of NSCLC.^{24,29,30,45} *VIMENTIN* overexpression was reported to be a bad prognostic marker in some NSCLC cohorts.^{24,27,29,39,43-45} In summary, the present results suggest a role for *CHD2* and *VIMENTIN* in the development of lymph node metastasis, even if they are not prognostic factors in early stages of NSCLC.

Total EMT (loss of *CDH1* expression associated with overexpression of *CDH2*) was observed in only one tumor in the present study. Partial EMT (expression of *CDH1* associated with overexpression of *CDH2*) was observed in 49% of tumors. This partial EMT was significantly more frequent in the N+ group of patients, suggesting a role for EMT in lymph node progression in early stage lung cancers. In fact, some authors have recently proposed that tumors with a partial EMT phenotype (defined as expressing of epithelial and mesenchymal markers) could have more metastatic features than tumors with a total EMT phenotype.^{46,47} This finding could be explained through the migration of tumoral cell clusters instead of isolated tumor cells.

Among EMT inducers, TGF β is a major EMT inducer in cancer and induces the EMT-TFs *SNAI1*, *SNAI2*, *ZEB1*, and *ZEB2*.¹⁸ We showed that *TGFBI* is overexpressed in 33% of tumors, with a greater frequency observed in the N+ group of tumors. In previous studies, TGF β protein or gene expression analyses have revealed a large range of overexpression, from 18% to 87%, in NSCLC depending on the technique (protein or gene analysis) or cutoff.^{39,48-50} The present study is, to our knowledge, the first to identify a correlation between *TGFBI* overexpression and N+ status in NSCLC patients. We also showed that *TGFBI* overexpression is correlated with overexpression of the mesenchymal markers *CDH2* and *VIMENTIN* and partial EMT, especially in the N+ group of patients. One

study found that the TGF β -activated SMAD3/4 complex up-regulates N-Cadherin expression in NSCLC cells and that SMAD3/4 expression was correlated with N-Cadherin expression in a NSCLC cohort.⁵¹ Another in vitro assay showed that TGF β could enhance *VIMENTIN* and *SNAI2* expression in NSCLC cells.⁵² In the present study, we found correlations between the overexpression of *TGFBI* and EMT-TFs *SNAI1*, *SNAI2*, *ZEB1*, *TWIST1*, and *TWIST2*, but with differences among N status. Indeed, *ZEB1* overexpression alone was correlated with overexpressed *TGFBI*, but only in the N+ group. In summary, TGF β may be a strong EMT inducer in the present cohort, especially in the N+ group, suggesting its role in lymph node progression in early stages of NSCLC patients.

Another EMT inducer, *c-MET*, was overexpressed in half of the tumors (52%) examined in the present study, which corresponds to the frequency of other studies in NSCLC, but without differences between the N+ and N0 groups.^{21,53,54} In the present study, overexpression of *c-MET* was mostly correlated with *VIMENTIN* overexpression. No correlation was observed with *CDH2* overexpression, independent of the group of patients. We also described a correlation between *c-MET* and EMT-TFs *SNAI1* and *ZEB1* overexpression, but only in the N+ group. Some authors suggest that *SNAI1* could be induced by *c-MET*, and a recent study on hepatocellular carcinoma cells and tumors showed a correlation of *c-MET* overexpression with *VIMENTIN*, *SNAI1* and *ZEB1* overexpression that could be explained by overexpression of the transcriptional factor FoxM1.⁵⁵⁻⁵⁷ In summary, *c-MET* may be a less important EMT inducer than *TGFBI* in NSCLC patients, without differences among the N status, but involving different EMT-TFs, such as *ZEB1* and *SNAI1*, only in the N+ group of tumors.

Hypoxia is also an EMT inducer associated with the TGF β and c-MET pathways.^{55,58} Overexpression of *HIF1 α* and *HIF2 α* was observed in 63% and 1% of tumors in the present cohort, respectively, which is in the range of different studies for HIF1 α but under the range for HIF2 α .^{59–61} As CAIX is a target protein of *HIF1 α* , but more stable than HIF1 α , we examined CAIX protein expression with EMT features. CAIX was overexpressed in only 9% of the tumors examined in the present study, which is lower than that reported in other studies on NSCLC cohorts, in which 24% to 38% of tumors showed overexpressed CAIX protein.^{60,62,63} In the present study, when CAIX overexpression was not different between N groups, its correlation with the mesenchymal marker *CDH2* and partial EMT was only observed in the N+ group. CAIX overexpression was also correlated with EMT-TFs *SNAI2* and *ZEB1* overexpression only in the N+ group. No previous studies have reported a correlation between CAIX and EMT markers/effectors in NSCLC. However, in tongue squamous cell carcinoma (in vitro and in tumor tissue samples), an investigation showed that CAIX and *ZEB1* protein expression are correlated and that CAIX could be regulated by *ZEB1*.⁶⁴ A correlation between CAIX and *SNAI2* was also reported by IHC analysis in basal-like breast carcinomas.⁶⁵ In summary, CAIX may, such as c-MET, be a less important EMT inducer than *TGF β 1* in NSCLC patients, without differences depending on the N status, but involving different EMT-TFs, only in the N+ group of tumors.

Two EMT effectors, *SNAI2* and *TWIST1*, were more often overexpressed in the N+ group of tumors. In the present study, *SNAI2* was overexpressed in 53% of cases, and in the N+ group, *SNAI2* was more frequently overexpressed and primarily correlated with the mesenchymal markers and EMT inducers *TGF β 1* and CAIX. The present study is, to our knowledge, the first to report these associations in a NSCLC cohort. Nevertheless, the association between *SNAI2* overexpression and the presence of lymph node metastasis has already been described by protein and gene analysis in tongue squamous cell carcinoma and breast and colorectal cancers, as well as the correlation of *SNAI2* overexpression with N-Cadherin and Vimentin overexpression.^{66–68} *TWIST1* was overexpressed in 73% of the present cases and more frequently overexpressed in the N+ group. *TWIST1* was investigated in several NSCLC cohorts by IHC, with overexpression ranging from 11% to 68%^{37,38,43,69–71} or gene expression at 57%.³⁷ Similar to the present study, a correlation between *TWIST1* and *CDH2* protein expression was found in a NSCLC cohort, but without data regarding the N status.³⁸ As in the present study, a previous study found an association of *TWIST1* protein overexpression with lymph node metastasis in lung cancer, supporting the role of *TWIST1* in local progression.⁷² In the present work, *TWIST1* overexpression was associated

with *VIMENTIN* overexpression, especially in N+ tumors. The present study showed that even if *TWIST1* was related to partial EMT phenotype, its overexpression was not correlated with the overexpression of EMT inducers, such as *TGF β 1*, c-MET, and CAIX, in the N+ group of tumors. These results suggest that *TWIST1* could be involved in the EMT process by other inducers, such as EGFR.⁷³ Finally, even if *ZEB1* is not differentially overexpressed between the N+ and N0 groups, it appears to be correlated with the three EMT inducers *TGF β 1*, c-MET, and CAIX only in the N+ group of tumors. In summary, the present results suggest that EMT-TFs are differentially related to EMT inducers in the N+ group of tumors and could promote the development of lymph node metastasis in early stage NSCLC.

Finally, the present results showed no prognostic value of EMT markers or effectors in the early stages of NSCLC. Nevertheless, the EMT inducer CAIX was shown to be an independent bad prognosis factor for RFS as well as for OS. The prognostic value of CAIX has also been reported in studies of NSCLC.^{60,62,74,75} HIF1 α and HIF2 α protein overexpression was shown to have a bad prognostic value in NSCLC, and one meta-analysis based on 30 studies also showed an association between HIF1 α overexpression and lymph node-positive tumors in NSCLC.^{59,61,62,74,76} Finally, CAIX overexpression had a negative impact on prognosis in the present cohort of early stage NSCLC patients. This effect could be explained by the potential role of CAIX in the development of a partial EMT phenotype in the N+ group through the EMT effectors *SNAI1* and *ZEB1*.

In conclusion, although the present study is retrospective with a small number of NSCLC patients for whom frozen tumors were available, we showed for the first time that the EMT-TFs *SNAI2* and *TWIST1* (and to a lesser extent *ZEB1*) could be involved through different pathways in lymph node progression. Only EMT inducer CAIX overexpression was a bad prognosis factor. In the future, these findings could be validated by further “in vitro” models as well as prospective clinical studies.

ACKNOWLEDGMENTS

We acknowledge the CRB (Centre de Ressources Biologiques), Biological Resources Centre, Strasbourg, France. We are grateful to Julie Buffa for technical assistance.

CONFLICT OF INTEREST

The authors declare no conflicts of interest.

ORCID

Camille Emprou  <http://orcid.org/0000-0002-0185-3668>

REFERENCES

- Siegel RL, Miller KD, Jemal A. Cancer statistics, 2016. *CA Cancer J Clin*. 2016;66:7-30.
- Eberhardt WEE, De Ruyscher D, Weder W, et al. 2nd ESMO Consensus Conference in Lung Cancer: locally advanced stage III non-small-cell lung cancer. *Ann Oncol Off J Eur Soc Med Oncol ESMO*. 2015;26:1573-1588.
- Vansteenkiste J, Crinò L, Doooms C, et al. 2nd ESMO Consensus Conference on Lung Cancer: early-stage non-small-cell lung cancer consensus on diagnosis, treatment and follow-up. *Ann Oncol Off J Eur Soc Med Oncol ESMO*. 2014;25:1462-1474.
- Williams BA, Sugimura H, Endo C, et al. Predicting postrecurrence survival among completely resected nonsmall-cell lung cancer patients. *Ann Thorac Surg*. 2006;81:1021-1027.
- Sobin LH, Compton CC. TNM seventh edition: what's new, what's changed: communication from the International Union Against Cancer and the American Joint Committee on Cancer. *Cancer*. 2010;116:5336-5339.
- Kalluri R, Weinberg RA. The basics of epithelial-mesenchymal transition. *J Clin Invest*. 2009;119:1420-1428.
- Thiery JP. Epithelial-mesenchymal transitions in tumour progression. *Nat Rev Cancer*. 2002;2:442-454.
- Thiery JP. Epithelial-mesenchymal transitions in development and pathologies. *Curr Opin Cell Biol*. 2003;15:740-746.
- Zeisberg M, Neilson EG. Biomarkers for epithelial-mesenchymal transitions. *J Clin Invest*. 2009;119:1429-1437.
- Heuberger J, Birchmeier W. Interplay of cadherin-mediated cell adhesion and canonical Wnt signaling. *Cold Spring Harb Perspect Biol*. 2010;2:a002915.
- Orsulic S, Huber O, Aberle H, Arnold S, Kemler R. E-cadherin binding prevents beta-catenin nuclear localization and beta-catenin/LEF-1-mediated transactivation. *J Cell Sci*. 1999;112(Pt 8):1237-1245.
- Lamouille S, Xu J, Derynck R. Molecular mechanisms of epithelial-mesenchymal transition. *Nat Rev Mol Cell Biol*. 2014;15:178-196.
- Nieto MA. The snail superfamily of zinc-finger transcription factors. *Nat Rev Mol Cell Biol*. 2002;3:155-166.
- Peinado H, Olmeda D, Cano A. Snail, Zeb and bHLH factors in tumour progression: an alliance against the epithelial phenotype? *Nat Rev Cancer*. 2007;7:415-428.
- Yang J, Mani SA, Donaher JL, et al. Twist, a master regulator of morphogenesis, plays an essential role in tumor metastasis. *Cell*. 2004;117:927-939.
- Soltermann A, Tischler V, Arbogast S, et al. Prognostic significance of epithelial-mesenchymal and mesenchymal-epithelial transition protein expression in non-small cell lung cancer. *Clin Cancer Res Off J Am Assoc Cancer Res*. 2008;14:7430-7437.
- Tse JC, Kalluri R. Mechanisms of metastasis: epithelial-to-mesenchymal transition and contribution of tumor microenvironment. *J Cell Biochem*. 2007;101:816-829.
- Yang J, Weinberg RA. Epithelial-mesenchymal transition: at the crossroads of development and tumor metastasis. *Dev Cell*. 2008;14:818-829.
- Travis WD, Brambilla E, Müller-Hermelink HK, Harris CC. Pathology and Genetics of Tumours of the Lung, Pleura, Thymus and Heart, 2004. Third edition - WHO - OMS - <http://apps.who.int/bookorders/anglais/detart1.jsp?codlan=1&codcol=70&codch=10&content=1>. Accessed September 26, 2016.
- Travis WD, Brambilla E, Burke AP, Marx A, Nicholson AG. WHO Classification of Tumours of the Lung, Pleura, Thymus and Heart, 2015. Fourth edition - WHO - OMS - <http://apps.who.int/bookorders/WHP/detart1.jsp?sesslan=1&codlan=1&codcol=70&codcch=4007>. Accessed September 21, 2016.
- Weingartner N, Meyer N, Voegeli A-C, et al. Correlation between MET protein expression and MET gene copy number in a Caucasian cohort of non-small cell lung cancers according to the new IASLC/ATS/ERS classification. *Pathology (Phila)*. 2015;47:320-328.
- Fan C, Miao Y, Zhang X, et al. Btbd7 contributes to reduced E-cadherin expression and predicts poor prognosis in non-small cell lung cancer. *BMC Cancer*. 2014;14:704.
- Jiang W, Fan H, Qian C, Ding J, Wang Q, Pang X. Prognostic value of high FoxC2 expression in resectable non-small cell lung cancer, alone or in combination with E-cadherin expression. *BMC Cancer*. 2016;16:16.
- Kong F-F, Qu Z-Q, Yuan H-H, et al. Overexpression of FOXM1 is associated with EMT and is a predictor of poor prognosis in non-small cell lung cancer. *Oncol Rep*. 2014;31:2660-2668.
- Matsubara D, Kishaba Y, Yoshimoto T, et al. Immunohistochemical analysis of the expression of E-cadherin and ZEB1 in non-small cell lung cancer. *Pathol Int*. 2014;64:560-568.
- Matsuwaki R, Ishii G, Zenke Y, et al. Immunophenotypic features of metastatic lymph node tumors to predict recurrence in N2 lung squamous cell carcinoma. *Cancer Sci*. 2014;105:905-911.
- Sung WJ, Park K-S, Kwak SG, Hyun D-S, Jang JS, Park K-K. Epithelial-mesenchymal transition in patients of pulmonary adenocarcinoma: correlation with cancer stem cell markers and prognosis. *Int J Clin Exp Pathol*. 2015;8:8997-9009.
- Yang Y-L, Chen M-W, Xian L. Prognostic and clinicopathological significance of downregulated E-cadherin expression in patients with non-small cell lung cancer (NSCLC): a meta-analysis. *PLoS ONE*. 2014;9:e99763.
- Zhou L, Yu L, Wu S, Feng Z, Song W, Gong X. Clinicopathological significance of KAI1 expression and epithelial-mesenchymal transition in non-small cell lung cancer. *World J Surg Oncol*. 2015;13:234.
- Chikaishi Y, Uramoto H, Tanaka F. The EMT status in the primary tumor does not predict postoperative recurrence or disease-free survival in lung adenocarcinoma. *Anticancer Res*. 2011;31:4451-4456.
- Liu D, Huang C, Kameyama K, et al. E-cadherin expression associated with differentiation and prognosis in patients with non-small cell lung cancer. *Ann Thorac Surg*. 2001;71:949-954; discussion 954-955.
- Shibanuma H, Hirano T, Tsuji K, et al. Influence of E-cadherin dysfunction upon local invasion and metastasis in non-small cell lung cancer. *Lung Cancer Amst Neth*. 1998;22:85-95.
- Sulzer MA, Leers MP, van Noord JA, Bollen EC, Theunissen PH. Reduced E-cadherin expression is associated with increased lymph node metastasis and unfavorable prognosis in non-small cell lung cancer. *Am J Respir Crit Care Med*. 1998;157:1319-1323.
- Shiwu WU, Lan Y, Wenqing S, Lei Z, Yisheng T. Expression and clinical significance of CD82/KAI1 and E-cadherin in non-small cell lung cancer. *Arch Iran Med*. 2012;15:707-712.
- Wu C, Zhu W, Qian J, et al. WT1 promotes invasion of NSCLC via suppression of CDH1. *J Thorac Oncol Off Publ Int Assoc Study Lung Cancer*. 2013;8:1163-1169.

36. Grinberg-Rashi H, Ofek E, Perelman M, et al. The expression of three genes in primary non-small cell lung cancer is associated with metastatic spread to the brain. *Clin Cancer Res Off J Am Assoc Cancer Res.* 2009;15:1755-1761.
37. Hui L, Zhang S, Dong X, Tian D, Cui Z, Qiu X. Prognostic significance of twist and N-cadherin expression in NSCLC. *PLoS ONE.* 2013;8:e62171.
38. Miura N, Yano T, Shoji F, et al. Clinicopathological significance of Sip1-associated epithelial mesenchymal transition in non-small cell lung cancer progression. *Anticancer Res.* 2009;29:4099-4106.
39. Al-Saad S, Al-Shibli K, Donnem T, Persson M, Bremnes RM, Busund L-T. The prognostic impact of NF-kappaB p105, vimentin, E-cadherin and Par6 expression in epithelial and stromal compartment in non-small-cell lung cancer. *Br J Cancer.* 2008;99:1476-1483.
40. Dauphin M, Barbe C, Lemaire S, et al. Vimentin expression predicts the occurrence of metastases in non small cell lung carcinomas. *Lung Cancer Amst Neth.* 2013;81:117-122.
41. Kim H, Yoo SB, Sun P, et al. Alteration of the E-Cadherin/ β -Catenin complex is an independent poor prognostic factor in lung adenocarcinoma. *Korean J Pathol.* 2013a;47:44-51.
42. Liu Y, Gai L, Liu J, Cui Y, Zhang Y, Feng J. Expression of poly(C)-binding protein 1 (PCBP1) in NSCLC as a negative regulator of EMT and its clinical value. *Int J Clin Exp Pathol.* 2015;8:7165-7172.
43. Shi Y, Wu H, Zhang M, Ding L, Meng F, Fan X. Expression of the epithelial-mesenchymal transition-related proteins and their clinical significance in lung adenocarcinoma. *Diagn Pathol.* 2013;8:89.
44. Tadokoro A, Kanaji N, Liu D, et al. Vimentin regulates invasiveness and is a poor prognostic marker in non-small cell lung cancer. *Anticancer Res.* 2016;36:1545-1551.
45. Zhang H, Liu J, Yue D, et al. Clinical significance of E-cadherin, β -catenin, vimentin and S100A4 expression in completely resected squamous cell lung carcinoma. *J Clin Pathol.* 2013;66:937-945.
46. Diepenbruck M, Christofori G. Epithelial-mesenchymal transition (EMT) and metastasis: yes, no, maybe? *Curr Opin Cell Biol.* 2016;43:7-13.
47. Jolly MK, Boareto M, Huang B, et al. Implications of the Hybrid Epithelial/Mesenchymal Phenotype in Metastasis. *Front Oncol.* 2015;5:155.
48. Bennett WP, el-Deiry WS, Rush WL, et al. p21waf1/cip1 and transforming growth factor beta 1 protein expression correlate with survival in non-small cell lung cancer. *Clin Cancer Res Off J Am Assoc Cancer Res.* 1998;4:1499-1506.
49. Boldrini L, Calcinai A, Samaritani E, et al. Tumour necrosis factor-alpha and transforming growth factor-beta are significantly associated with better prognosis in non-small cell lung carcinoma: putative relation with BCL-2-mediated neovascularization. *Br J Cancer.* 2000;83:480-486.
50. Kim J-W, Koh Y, Kim D-W, et al. Clinical Implications of VEGF, TGF- β 1, and IL-1 β in Patients with Advanced Non-small Cell Lung Cancer. *Cancer Res Treat Off J Korean Cancer Assoc.* 2013b;45:325-333.
51. Yang H, Wang L, Zhao J, et al. TGF- β -activated SMAD3/4 complex transcriptionally upregulates N-cadherin expression in non-small cell lung cancer. *Lung Cancer Amst Neth.* 2015;87:249-257.
52. Tirino V, Camerlingo R, Bifulco K, et al. TGF- β 1 exposure induces epithelial to mesenchymal transition both in CSCs and non-CSCs of the A549 cell line, leading to an increase of migration ability in the CD133 + A549 cell fraction. *Cell Death Dis.* 2013;4:e620.
53. Casadevall D, Gimeno J, Clavé S, et al. MET expression and copy number heterogeneity in nonsquamous non-small cell lung cancer (nsNSCLC). *Oncotarget.* 2015;6:16215-16226.
54. Guo B, Cen H, Tan X, Liu W, Ke Q. Prognostic value of MET gene copy number and protein expression in patients with surgically resected non-small cell lung cancer: a meta-analysis of published literatures. *PLoS ONE.* 2014;9:e99399.
55. Boccaccio C, Comoglio PM. Invasive growth: a MET-driven genetic programme for cancer and stem cells. *Nat Rev Cancer.* 2006;6:637-645.
56. Meng F-D, Wei J-C, Qu K, et al. FoxM1 overexpression promotes epithelial-mesenchymal transition and metastasis of hepatocellular carcinoma. *World J Gastroenterol.* 2015;21:196-213.
57. Zhang J-P, Zeng C, Xu L, Gong J, Fang J-H, Zhuang S-M. MicroRNA-148a suppresses the epithelial-mesenchymal transition and metastasis of hepatoma cells by targeting Met/Snail signaling. *Oncogene.* 2014;33:4069-4076.
58. Rankin EB, Giaccia AJ. Hypoxic control of metastasis. *Science.* 2016;352:175-180.
59. Andersen S, Eilertsen M, Donnem T, et al. Diverging prognostic impacts of hypoxic markers according to NSCLC histology. *Lung Cancer Amst Neth.* 2011;72:294-302.
60. Giatromanolaki A, Koukourakis MI, Sivridis E, et al. Expression of hypoxia-inducible carbonic anhydrase-9 relates to angiogenic pathways and independently to poor outcome in non-small cell lung cancer. *Cancer Res.* 2001;61:7992-7998.
61. Wang Q, Hu D, Rui Y, Jiang A, Liu Z, Huang L. Prognosis value of HIF-1 α expression in patients with non-small cell lung cancer. *Gene.* 2014;541:69-74.
62. Giatromanolaki A, Koukourakis MI, Sivridis E, et al. DEC1 (STRA13) protein expression relates to hypoxia-inducible factor 1-alpha and carbonic anhydrase-9 overexpression in non-small cell lung cancer. *J Pathol.* 2003;200:222-228.
63. Ilie M, Mazure NM, Hofman V, et al. High levels of carbonic anhydrase IX in tumour tissue and plasma are biomarkers of poor prognostic in patients with non-small cell lung cancer. *Br J Cancer.* 2010;102:1627-1635.
64. Zheng G, Peng C, Jia X, et al. ZEB1 transcriptionally regulated carbonic anhydrase 9 mediates the chemoresistance of tongue cancer via maintaining intracellular pH. *Mol Cancer.* 2015;14:84.
65. Storci G, Sansone P, Trere D, et al. The basal-like breast carcinoma phenotype is regulated by SLUG gene expression. *J Pathol.* 2008;214:25-37.
66. Liu T, Zhang X, Shang M, et al. Dysregulated expression of Slug, vimentin, and E-cadherin correlates with poor clinical outcome in patients with basal-like breast cancer. *J Surg Oncol.* 2013;107:188-194.
67. Toiyama Y, Yasuda H, Saigusa S, et al. Increased expression of Slug and Vimentin as novel predictive biomarkers for lymph node metastasis and poor prognosis in colorectal cancer. *Carcinogenesis.* 2013;34:2548-2557.
68. Wang C, Liu X, Huang H, et al. Deregulation of Snai2 is associated with metastasis and poor prognosis in tongue squamous cell carcinoma. *Int J Cancer.* 2012;130:2249-2258.
69. Hung J-J, Yang M-H, Hsu H-S, Hsu W-H, Liu J-S, Wu K-J. Prognostic significance of hypoxia-inducible factor-1alpha,

- TWIST1 and Snail expression in resectable non-small cell lung cancer. *Thorax*. 2009;64:1082-1089.
70. Jiang W, Pang X-G, Wang Q, Shen Y-X, Chen X-K, Xi J-J. Prognostic role of Twist, Slug, and Foxc2 expression in stage I non-small-cell lung cancer after curative resection. *Clin Lung Cancer*. 2012;13:280-287.
71. Merikallio H, Kaarteenaho R, Pääkkö P, et al. Zeb1 and twist are more commonly expressed in metastatic than primary lung tumours and show inverse associations with claudins. *J Clin Pathol*. 2011;64:136-140.
72. Wei L, Sun J-J, Cui Y-C, et al. Twist may be associated with invasion and metastasis of hypoxic NSCLC cells. *Tumour Biol J Int Soc Oncodevelopmental Biol Med*. 2016;37:9979-9987.
73. Pallier K, Cessot A, Côté J-F, et al. TWIST1 a new determinant of epithelial to mesenchymal transition in EGFR mutated lung adenocarcinoma. *PLoS ONE*. 2012;7:e29954.
74. Kim SJ, Rabbani ZN, Dewhirst MW, et al. Expression of HIF-1alpha, CA IX, VEGF, and MMP-9 in surgically resected non-small cell lung cancer. *Lung Cancer Amst Neth*. 2005;49:325-335.
75. Kim SJ, Rabbani ZN, Vollmer RT, et al. Carbonic anhydrase IX in early-stage non-small cell lung cancer. *Clin Cancer Res Off J Am Assoc Cancer Res*. 2004;10:7925-7933.
76. Ren W, Mi D, Yang K, et al. The expression of hypoxia-inducible factor-1 α and its clinical significance in lung cancer: a systematic review and meta-analysis. *Swiss Med Wkly*. 2013;143:w13855.

SUPPORTING INFORMATION

Additional supporting information may be found online in the Supporting Information section at the end of the article.

How to cite this article: Emprou C, Le Van Quyen P, Jégu J, et al. *SNAI2* and *TWIST1* in lymph node progression in early stages of NSCLC patients. *Cancer Med*. 2018;7:3278–3291.
<https://doi.org/10.1002/cam4.1545>