



**HAL**  
open science

## Monitoring aquifers and subsidence with the chronometric leveling

Guillaume Lion, Kristel Chanard, Gwendoline Pajot, Michel Diamant, Olivier  
Jamet

► **To cite this version:**

Guillaume Lion, Kristel Chanard, Gwendoline Pajot, Michel Diamant, Olivier Jamet. Monitoring aquifers and subsidence with the chronometric leveling. EGU, Apr 2024, Vienna (AUSTRIA), Austria. 2024, 10.5194/egusphere-egu24-6235 . hal-04553611

**HAL Id: hal-04553611**

**<https://hal.science/hal-04553611>**

Submitted on 22 Apr 2024

**HAL** is a multi-disciplinary open access archive for the deposit and dissemination of scientific research documents, whether they are published or not. The documents may come from teaching and research institutions in France or abroad, or from public or private research centers.

L'archive ouverte pluridisciplinaire **HAL**, est destinée au dépôt et à la diffusion de documents scientifiques de niveau recherche, publiés ou non, émanant des établissements d'enseignement et de recherche français ou étrangers, des laboratoires publics ou privés.

Copyright



# Monitoring aquifers and subsidence with the chronometric leveling

G. Lion<sup>1,2</sup>, K. Chanard<sup>1,2</sup>, G. Pajot-Métivier<sup>1,2</sup>, M. Diament<sup>1</sup> and O. Jamet<sup>3</sup>

<sup>1</sup> Université Paris Cité, IPGP, CNRS, IGN, F-75005 Paris, France

<sup>2</sup> ENSG-Géomatique, IGN, F-77455 Marne la-Vallée, France

<sup>3</sup> IGN, Saint-Mandé, France

Contact: glion@ipgp.fr



## Overview

Subsidence poses a considerable threat to the sustainability and economic advancement of at least one-fifth of the world's population (Herrera-García, 2021). This challenge is especially pronounced in coastal and heavily urbanized regions, where ground subsidence rates of several centimeters per month or several meters per decade are observed. The origins of subsidence can be either natural or anthropogenic. It is predominantly influenced by the hydrological, geological, and tectonic characteristics of the region, as well as the geotechnical properties of the underlying formations. This study aims to evaluate whether chronometric leveling, conducted in France, can complement gravimetric, spatial imaging, and traditional leveling techniques for investigating vertical soil displacements. These displacements result from disturbances in groundwater resources, which are monitored using piezometers, and can arise from climatic or anthropogenic factors.

## Chronometric leveling and aquifers

The study is part of the ANR ROYIMAGE project, which aims to develop a transportable ytterbium (Yb) optical lattice clock with a relative frequency uncertainty of  $10^{-18}$ . Connected to the nodes of the REFIMEVE fiber network, the clock will enable remote clock comparisons for conducting chronometric geodesy and geoscience applications.

### Chronometric leveling

**Gravitational redshift** → General relativity predicts that time flows differently for clocks placed in different gravitational potentials

→ **Clock comparisons can measure directly geopotential (not directly available with traditional techniques) and height differences**

**Clock frequency shift**  
 $\Delta f/f = 10^{-17} (-18)$

**Geopotential variations**  
 $\Delta W \approx 1 (0.1) \text{ m}^2/\text{s}^2$

**Height variations**  
 $\Delta H \approx 10 (1) \text{ cm}$

$$\frac{\Delta f}{f_p} = \frac{f_Q - f_p}{f_p} = -\frac{W_p - W_Q}{c^2} + o(c^{-4}) \approx -\frac{\Delta W}{c^2}$$

$$\Delta W = C_Q - C_p = \bar{g}_Q H_Q - \bar{g}_p H_p \approx \bar{g}_p (H_Q - H_p) \approx \bar{g}_p \Delta H$$

$C_p = W_0 - W_p \rightarrow$  Geopotential number     $\bar{g}_p \rightarrow$  Mean gravity  
 $H_p = C_p / \bar{g}_p \rightarrow$  Orthometric altitude

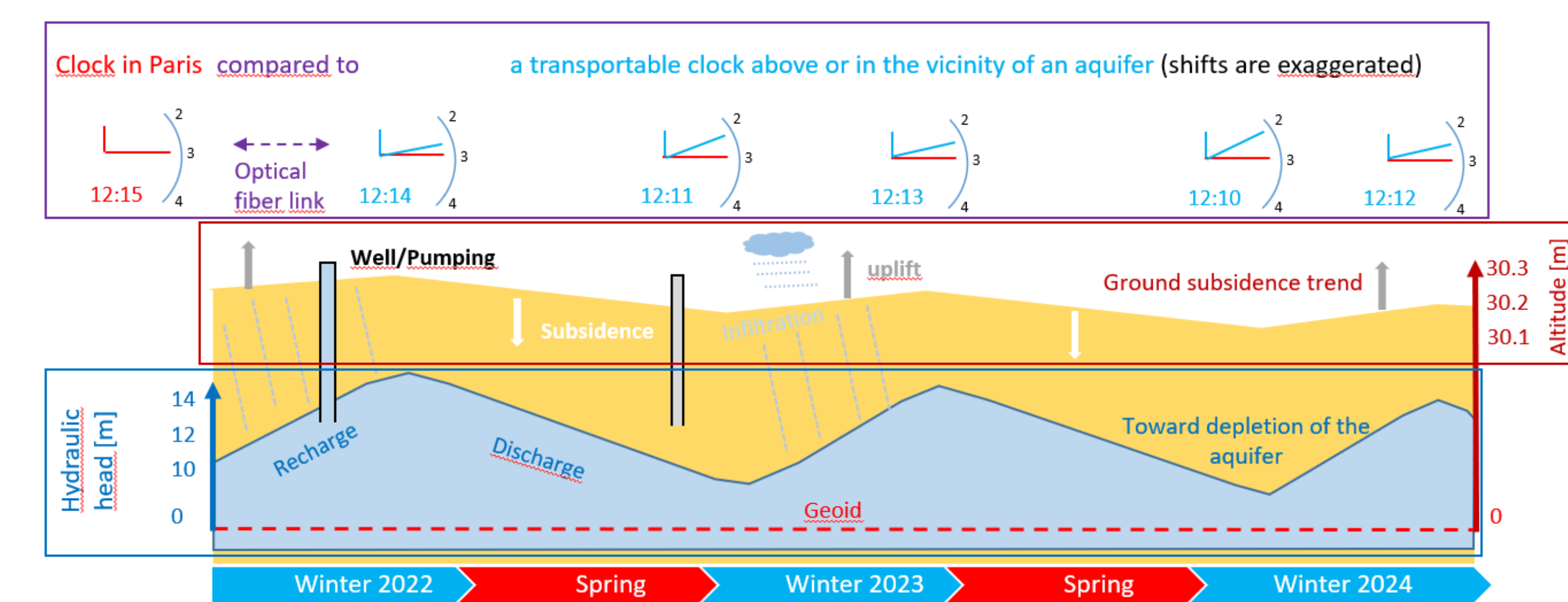
**Altitude difference effect**

Reference clock    Field clock at different H

**Mass variations effect**

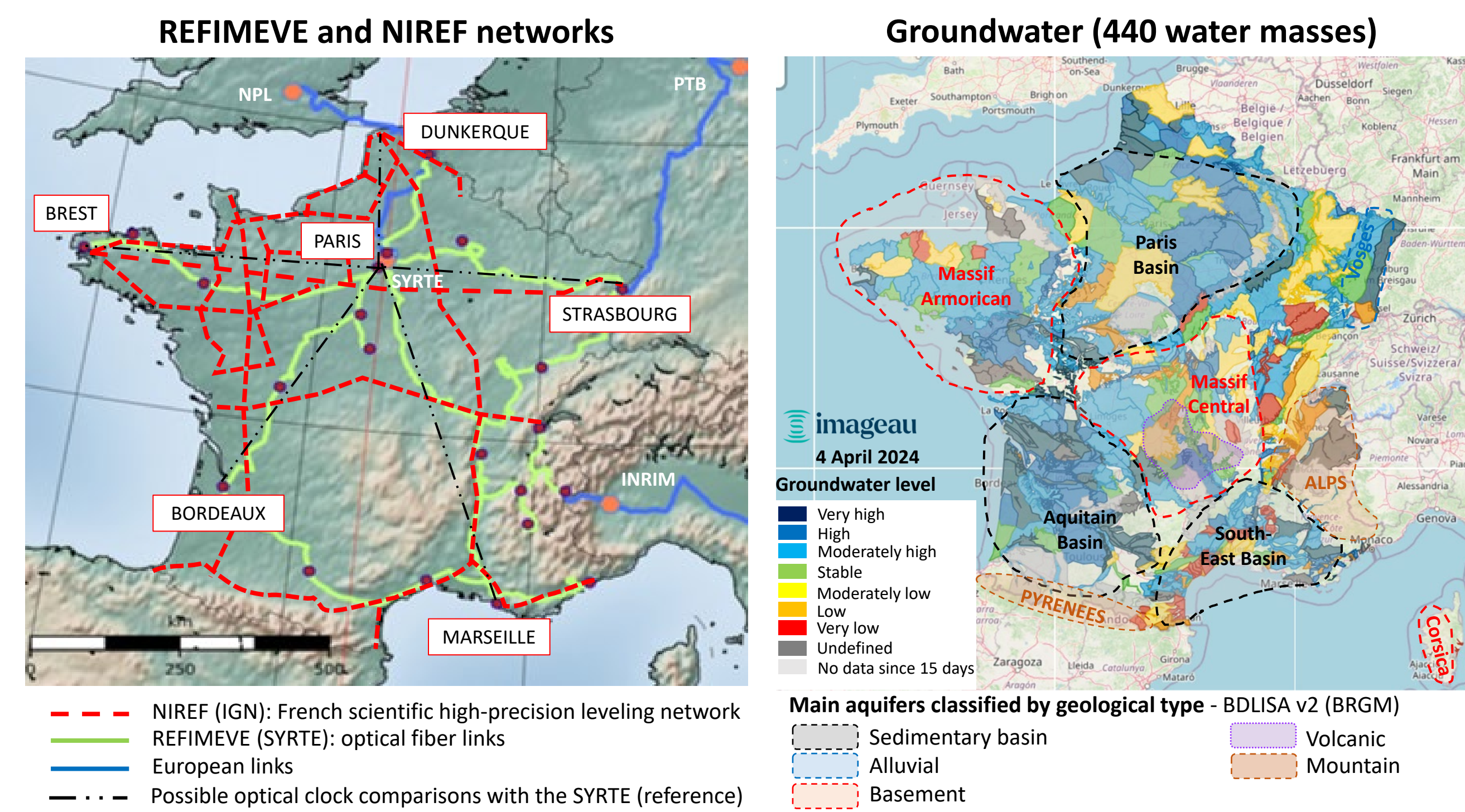
Field clock senses  $\Delta \rho < 0 +$  subsidence    Field clock senses  $\Delta \rho > 0 +$  uplift

### Application to the aquifers



- Vertical deformations of the Earth's surface due to subsidence/uplift
- Temporal variations of gravity field and geopotential due to mass transfer
- Clock comparisons can help track changes in water mass and associated ground movements

## Groundwater and coverage of fiber and leveling networks



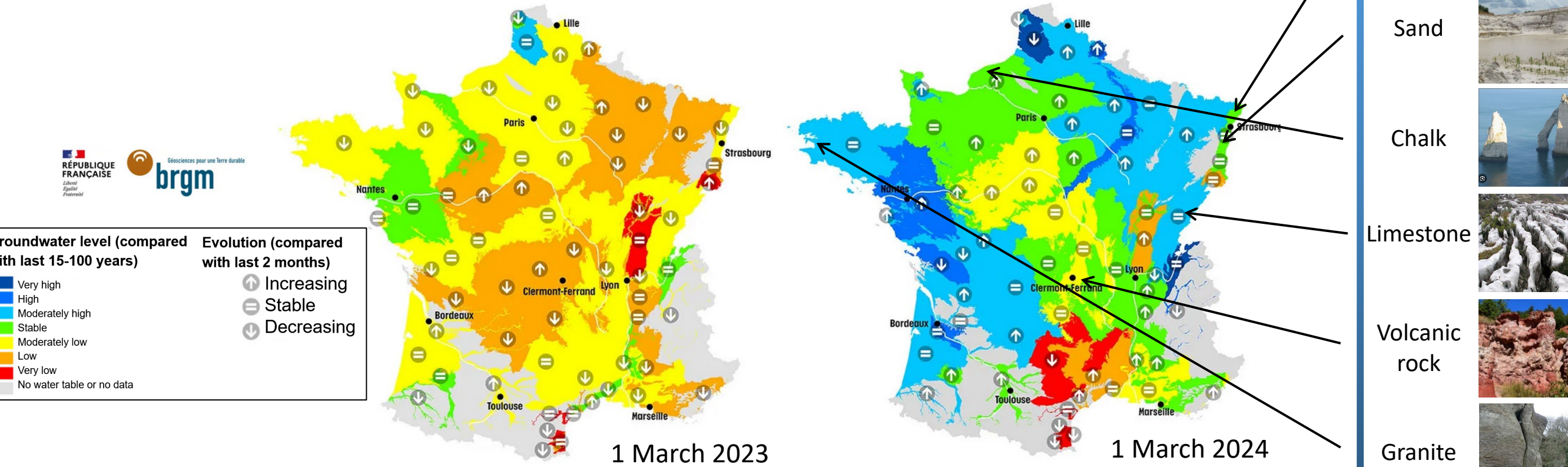
- Both networks cross groundwater tables
- Several segments of NIREF overlap with REFIMEVE
- Variations in aquifer hydraulic head can induce vertical ground motions at local and regional scales

- Deformation of a leveling network
- Can clocks contribute to improving the vertical reference?

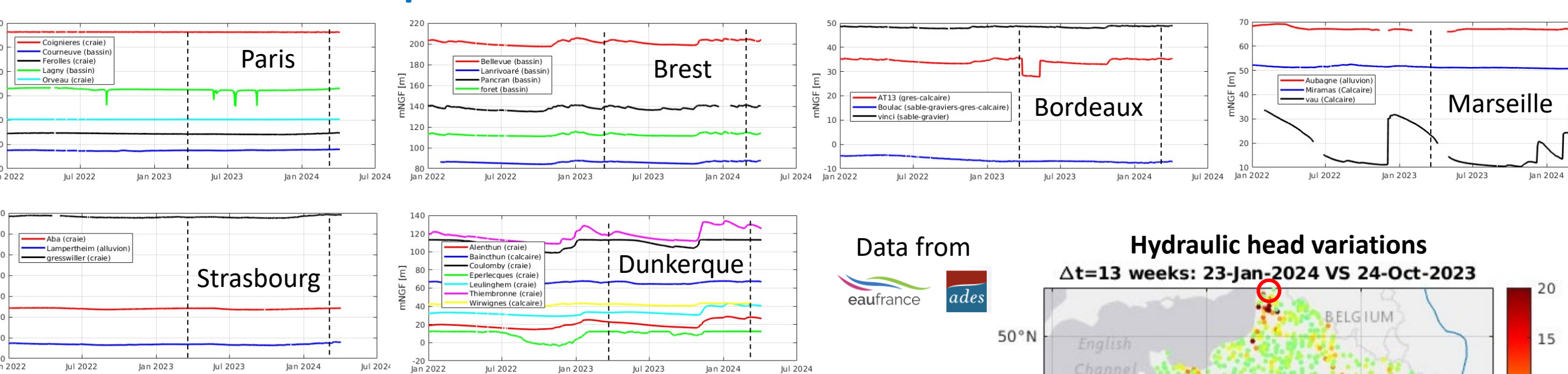
## Groundwater level variations

### Managed by the BRGM, the French geological survey

- 6500 aquifers including 200 regional-scale aquifers (1 000 to 100 000 km<sup>2</sup>)
- Manage a national piezometric network with 1 600 boreholes
- Diverse rock types leading to different permeabilities
- Some regions are more affected by climate change, rainfall, pumping and natural groundwater recharge



### Data from several piezometers around REFIMEVE



- Average hydraulic head variations around 1-5 meters
- Some piezometers have recorded a recharge >10 m in few weeks after the drought period in 2023 and the heavy rains of recent months
- Over the past 10 years, variations can reach 10-15 m in few months, but fluctuations can reach 30 m
- Some aquifers are no longer able to fully recharge, loss of 1 m/yr

→ What is the gravitational response and associated vertical ground deformation at regional scales?

## Simulations

### Gravitational signal and vertical displacement → Lion et al., in prep

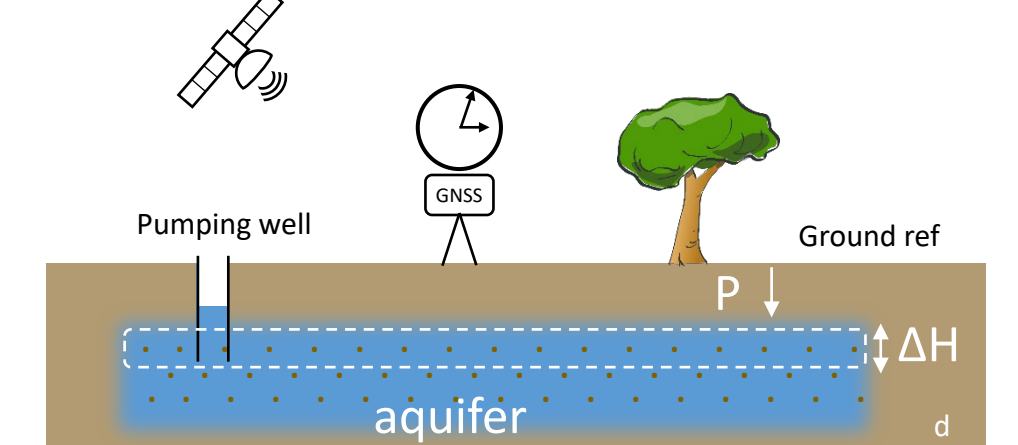
- Clock comparisons integrate the effects at both the reference and compared stations
- The signal must be corrected for classical gravitational effects in order to characterize the displacement  $u_{az}$  and the gravitational potential changes  $\Delta V$  due to the aquifer(s)
- We assume no hydrological variation near the reference clock

### Geopotential variations: $\Delta W = \Delta \Phi + \Delta V_{SET} + \Delta V_{OTL} + \Delta V_{PM} + \Delta V_{aqui} + (\dots)$

- $\Phi$  and  $V_{PM} \rightarrow$  IERS 2010 conventions;  $V_{OTL} \rightarrow$  FES2014b
- $V_{SET} = V_t + \delta V_t - g \cdot u_{tz} \rightarrow V_t$ : direct tidal effect;  $\delta V_t$ : Earth deformation;  $u_{tz}$ : surface change or  $V_{SET}^{(n)} = (1 + k_p - h_p) V_t^{(n)} \rightarrow$  Harmonic tables of tide-generating potential (HW95) + elastic response of the Earth tides via Love number theory
- $V_{aqui} = V_a - g \cdot u_{az}$

$V_a$ : gravitational potential of an aquifer

- Right rectangular prism at depth P
- Dimension:  $120 \times 60 \times \Delta H$  [km<sup>3</sup>]
- See for e.g. Mader (1951)



$u_{az}$ : vertical displacement of compacting reservoir → See for e.g. Barbosa et al. (2022)

Peak-to-peak value - From 03/2023 to 03/2024

$\Delta V$ effects [m <sup>2</sup> /s <sup>2</sup> ]	Centrifugal $\Phi$	Solid Earth Tide $V_{SET}$ ( $u_{tz}$ )	Ocean Tide Loading $V_{OTL}$	Polar motion $V_{PM}$	Max effect				
					P (m)	$\Delta H=1m$ $V_{aqui}$ ( $u_{az}$ )	$\Delta H=5m$ $V_{aqui}$ ( $u_{az}$ )	$\Delta H=10m$ $V_{aqui}$ ( $u_{az}$ )	$\Delta H=20m$ $V_{aqui}$ ( $u_{az}$ )
Paris (ref)	48201.56	5.11 (46)	0.03	0.17	-	-	-	-	
Bordeaux-Paris	7182.85	0.67 (6)	0.04	<0.01	100	<0.01 (0)	0.12 (1)	0.24 (2)	0.58 (5)
Brest-Paris	3.34	0.90 (8)	0.12	0.02	20	0.01 (0)	0.03 (0)	0.07 (0)	0.13 (0)
Dunkerque-Paris	-5022.91	0.28 (3)	0.03	<0.01	10	<0.01 (0)	0.03 (0)	0.06 (0)	0.18 (1)
Marseille-Paris	9756.18	0.87 (8)	0	<0.01	10	<0.01 (0)	0.03 (0)	0.06 (0)	0.18 (1)
Strasbourg-Paris	1740.82	0.71 (6)	0	0.02	30	<0.01 (0)	0.03 (0)	0.10 (1)	0.28 (2)

Simulations use coarse rheological parameters for each geological area: Young's modulus E (20 GPa for Brest, 500 MPa otherwise), Poisson's coeff  $\nu=0.25$ , uniaxial compaction  $C_m=0.8/E$ , mean porosity with a density of 2.6 (granit, sandstone) for Brest and 1.6 (clay, marne) otherwise

→ With centimeter variations, these preliminary results show that clock measurements could be sensitive to hydraulic changes in aquifers

## Perspectives

- Build a catalog of hydrological basins with their physical and rheological properties
- Make more realistic simulations for each water mass (rectangular prism discretization)
- Extend the study for each REFIMEVE nodes
- Decoupling a geopotential signal from the vertical displacement
- Analysis of the InSAR products (e.g. EGMS) and GRACE solutions at local/regional scales
- Generate interferograms using Flatsim (ForM@Ter service) from Sentinel-1 data
- Characterize the geodetic network with clocks, GNSS, InSAR and GRACE data

## References

- ANR ROYIMAGE: <https://royimagean.obsppm.fr/en/homepage/>
- Barbosa, V. C. F., et al. (2022). 3D Displacement and Stress Fields of Compacting Reservoir. *Brazilian J. Geophysics*, 40(5).
- Bjerhammar A. (1986). Relativistic geodesy. NOAA Technical Rep.
- Herrera-García, G., et al. (2021). Mapping the global threat of land subsidence. *Science*, 371(6524), 34-36.
- Lion, G., et al. (2023). Field optical clocks and sensitivity to mass anomalies for geoscience applications. In EGU 2023.
- Lion, G., et al. (2024). Monitoring groundwater and subsidence in France with the chronometric leveling, in prep.
- Mader, K. (1951). Das Newtonsche Raumpotential prismatischer Körper u. seine Ableitungen bis zur dritten Ordnung. Österr. Verein f. Vermessungswesen.
- Maréchal, J. C., and Rouillard, J. (2020). Groundwater in France: resources, use and management issues. Springer.
- Stacey, F. D., & Davis, P. M. (2008). *Physics of the Earth*. Cambridge University Press.

## Acknowledgements

The authors acknowledge the support of the French ANR under reference ANR-20-CE47-0006.