



**HAL**  
open science

# Unveiling the co-phylogeny signal between plunderfish *Harpagifer* spp. and their gut microbiomes across the Southern Ocean

Guillaume Schwob, Léa Cabrol, Thomas Saucède, Karin Gérard, Elie Poulin,  
Julieta Orlando

► **To cite this version:**

Guillaume Schwob, Léa Cabrol, Thomas Saucède, Karin Gérard, Elie Poulin, et al.. Unveiling the co-phylogeny signal between plunderfish *Harpagifer* spp. and their gut microbiomes across the Southern Ocean. *Microbiology Spectrum*, 2024, 12 (4), pp.e03830-23. 10.1128/spectrum.03830-23. hal-04552885

**HAL Id: hal-04552885**

**<https://hal.science/hal-04552885>**

Submitted on 19 Apr 2024

**HAL** is a multi-disciplinary open access archive for the deposit and dissemination of scientific research documents, whether they are published or not. The documents may come from teaching and research institutions in France or abroad, or from public or private research centers.

L'archive ouverte pluridisciplinaire **HAL**, est destinée au dépôt et à la diffusion de documents scientifiques de niveau recherche, publiés ou non, émanant des établissements d'enseignement et de recherche français ou étrangers, des laboratoires publics ou privés.

# Unveiling the co-phylogeny signal between plunderfish *Harpagifer* spp. and their gut microbiomes across the Southern Ocean

Guillaume Schwob,<sup>1,2,3</sup> Léa Cabrol,<sup>1,3,4</sup> Thomas Saucède,<sup>5</sup> Karin Gérard,<sup>1,6,7</sup> Elie Poulin,<sup>1,2,3</sup> Julieta Orlando<sup>1,2</sup>

**AUTHOR AFFILIATIONS** See affiliation list on p. 15.

**ABSTRACT** Understanding the factors that sculpt fish gut microbiome is challenging, especially in natural populations characterized by high environmental and host genomic complexity. However, closely related hosts are valuable models for deciphering the contribution of host evolutionary history to microbiome assembly, through the underscoring of phyllosymbiosis and co-phylogeny patterns. Here, we propose that the recent diversification of several *Harpagifer* species across the Southern Ocean would allow the detection of robust phylogenetic congruence between the host and its microbiome. We characterized the gut mucosa microbiome of 77 individuals from four field-collected species of the plunderfish *Harpagifer* (Teleostei, Notothenioidei), distributed across three biogeographic regions of the Southern Ocean. We found that seawater physicochemical properties, host phylogeny, and geography collectively explained 35% of the variation in bacterial community composition in *Harpagifer* gut mucosa. The core microbiome of *Harpagifer* spp. gut mucosa was characterized by a low diversity, mostly driven by selective processes, and dominated by a single *Aliivibrio* Operational Taxonomic Unit (OTU) detected in more than 80% of the individuals. Nearly half of the core microbiome taxa, including *Aliivibrio*, harbored co-phylogeny signal at microdiversity resolution with host phylogeny, indicating an intimate symbiotic relationship and a shared evolutionary history with *Harpagifer*. The clear phyllosymbiosis and co-phylogeny signals underscore the relevance of the *Harpagifer* model in understanding the role of fish evolutionary history in shaping the gut microbiome assembly. We propose that the recent diversification of *Harpagifer* may have led to the diversification of *Aliivibrio*, exhibiting patterns that mirror the host phylogeny.

**IMPORTANCE** Although challenging to detect in wild populations, phylogenetic congruence between marine fish and its microbiome is critical, as it highlights intimate associations between hosts and ecologically relevant microbial symbionts. Our study leverages a natural system of closely related fish species in the Southern Ocean to unveil new insights into the contribution of host evolutionary trajectory on gut microbiome assembly, an underappreciated driver of the global marine fish holobiont. Notably, we unveiled striking evidence of co-diversification between *Harpagifer* and its microbiome, demonstrating both phyllosymbiosis of gut bacterial communities and co-phylogeny of some specific bacterial symbionts, mirroring the host diversification patterns. Given *Harpagifer's* significance as a trophic resource in coastal areas and its vulnerability to climatic and anthropic pressures, understanding the potential evolutionary interdependence between the hosts and its microbiome provides valuable microbial candidates for future monitoring, as they may play a pivotal role in host species acclimatization to a rapidly changing environment.

**Editor** Konstantinos Aristomenis Kormas, Panepistimio Thessalias Tmema Geoponias Ichthyologias kai Ydatinou Periballontos, Volos, Greece

**Ad Hoc Peer Reviewers** Omar Mejia; Isabelle George, Universite Libre de Bruxelles-Campus de la Plaine, Belgium

Address correspondence to Guillaume Schwob, gschwob@institutobase.cl.

The authors declare no conflict of interest.

See the funding table on p. 16.

**Received** 1 November 2023

**Accepted** 9 February 2024

**Published** 5 March 2024

Copyright © 2024 Schwob et al. This is an open-access article distributed under the terms of the [Creative Commons Attribution 4.0 International license](https://creativecommons.org/licenses/by/4.0/).

**KEYWORDS** microbiome, phyllosymbiosis, co-phylogeny, co-diversification, *Harpagifer*, *Aliivibrio*, teleost, Southern Ocean

The implication of the microbiome in facilitating or responding to host evolutionary processes is one of the burning points of holobiont studies (1–3). Under the holobiont concept, the reciprocal evolution of host and microbiome genomes, namely, co-evolution, is associated with several key life history traits such as obligate symbiosis, vertical inheritance, metabolic cooperation, reproduction control, and co-diversification (4–6). Co-diversification, defined as the parallel and synchronized diversification of the host and symbiont lineages through a history of constant association, constitutes the most investigated trait to get evidence of potential co-evolution in natural macroorganisms' populations (5, 7–9). However, demonstrating co-diversification between hosts and complex microbiomes in natural populations remains methodologically challenging because signal might be weak and/or overwhelmed by environmental factors, and insufficient genomic data hinder the determination of divergence timing and the acquisition of well-resolved phylogenies (8, 9). Two empirical patterns are classically recognized, known as phyllosymbiosis and co-phylogeny, to evidence the impact of the evolutionary interactions on holobiont assemblage (9–11). Phyllosymbiosis refers to a congruence pattern between the phylogeny of host species and the clustering of microbial community structure, observed at one moment in time and space (10). However, this pattern does not imply any stable evolutionary association between a host and its microbiome along time (12). Practically, phyllosymbiosis is reflected by higher similarity of microbial communities within the same host species than between different host species and by genetic differences among hosts that are consistent with the compositional differences in their microbiomes (13). By contrast, co-phylogeny involves parallel evolutionary history of host species and specific microbial symbionts (5). A co-phylogenetic signal is elucidated by congruent topologies of host species and specific symbionts phylogenies, by which interacting partners shared similar positions in their respective trees (9). The screening for phyllosymbiosis and co-phylogeny signals in complex and uncharacterized holobionts has led to the identification of specific microbes, with potentially highly relevant ecological role in the host (14–16).

Detecting robust phyllosymbiosis and co-phylogeny signals in wild species populations is challenging due to the complexity of natural holobiont systems related to uncontrolled sources of microbial variability (10, 17). To tackle this issue, several approaches have been proposed, such as focusing on the core microbiome (i.e., common microbial taxa across diverse environments) (17, 18) and on the mucosa resident microbiome (i.e., autochthonous and supposedly temporally stable in the intestinal mucus) (3, 13, 19). These host-specific sub-communities, less impacted by external environment and diet (19, 20), likely fulfill critical functions for the host and contribute to its fitness and evolution (4, 13) and hence are more susceptible to present co-phylogeny patterns (12). Moreover, in anciently diverged hosts species with long-term evolution from the last common ancestor, the phyllosymbiosis signal can be blurred by evolutionary history events (e.g., host-swap, symbiont extinction, or phylogenetically non-congruent symbiont speciation events) (10, 16). Several authors advocated working with recently diverged and thus genetically closely related species, characterized by stronger phyllosymbiosis pattern, to better delineate the effects of evolutionary history and ecology of the host on microbiome assembly (17, 21, 22).

The fish fauna of the Southern Ocean (SO) is dominated by the perciform suborder Notothenioidei (teleost fishes), which constitute 90% of the fish biomass and up to 77% of the species diversity of the Antarctic continental shelf (23). To date, the microbial communities associated to the notothenioids have received very little attention and have been mainly characterized through cultural-dependent methods (24–26). The gut microbiome of only two species from West Antarctic Peninsula, *Notothenia coriiceps* and *Chaenocephalus aceratus*, has been analyzed through 16S rRNA gene-based clone libraries, revealing a low microbial richness and a strong dominance of the family

*Vibrionaceae* represented by *Vibrio* and *Photobacterium* genera (23). However, none of these studies addressed co-diversification within the notothenioid holobiont.

Within the Notothenioidei suborder, the monogeneric family of the *Harpagiferidae* comprises 12 nominal species, each one distributed in a specific region of the SO, such as *Harpagifer antarcticus* along West Antarctic Peninsula (27), *H. georgianus* in the South Georgia Islands (28), *H. bispinis* in Patagonia (29), and *H. kerguelensis* in Kerguelen Islands (30). These species are stenothermic, demonstrating an adaptation to cold waters, and have been identified as susceptible to the impacts of climate change (e.g., seawater temperature increase) and anthropogenic perturbation (i.e., microplastic contamination) in the Southern Ocean (31, 32). In this context, exploring potential evolutionary interdependence between *Harpagifer* and its specific symbionts could unveil microbial candidates for future monitoring. These symbionts may play a crucial role in either contributing to or limiting the acclimatization of host species to a rapidly changing environment (33). To date, only one published study delved into the evolutionary history of the genus *Harpagifer*, unveiling a recent differentiation between *H. antarcticus* and the South American species *H. bispinis*, estimated at 1.2–0.8 million years ago (34). This recent divergence, as observed for other species in the current study, makes *Harpagifer* an interesting model to explore co-diversification hypothesis. Despite relatively contrasting environmental conditions due to their distinct geographical distribution, these closely related species have the same trophic positioning and live in intertidal and shallow subtidal habitats (35, 36). Consequently, we anticipate the detection of shared microbial taxa, conforming the core of the gut mucosa microbiome (“GMM” hereafter) among *Harpagifer* species. The slow evolution of the 16S rRNA gene marker of bacteria, at 1%–2% per 50 Myr on average (37), precludes exploring pattern of co-phylogeny among symbionts and their host species that have diverged in shorter timescales when considering the classical 97% similarity bacterial Operational Taxonomic Units (OTUs) (38). Therefore, the co-phylogenetic signal of *Harpagifer* species and their microbiomes will be explored at a microdiversity level (39). By characterizing through 16S rRNA gene sequencing the GMM of wild-caught individuals from four species of *Harpagifer*, we aim (i) to evaluate the contribution of host identity and phylogeny on gut microbiome composition compared to the environment and the geography and (ii) to test the hypothesis of a co-phylogenetic signal between *Harpagifer* species and shared members of their gut microbiomes (i.e., core microbial taxa).

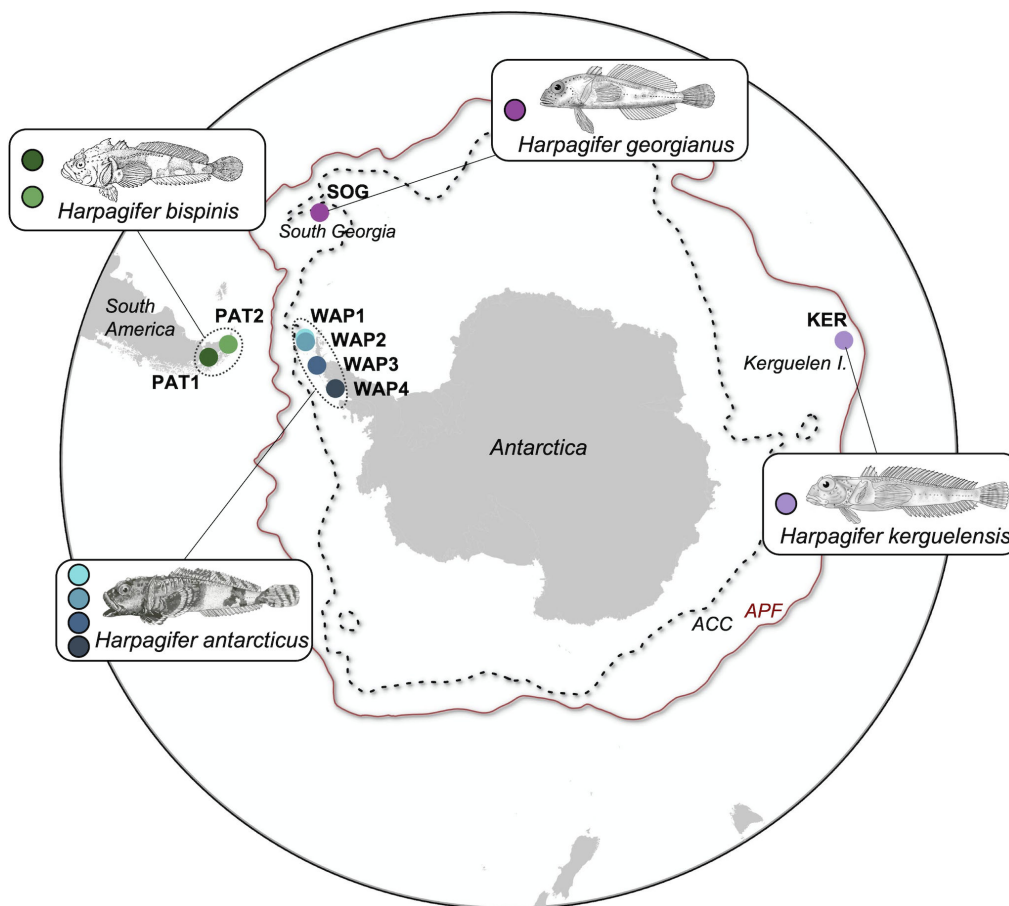
## MATERIALS AND METHODS

### *Harpagifer* spp. individuals sampling and dissection

Individuals of the fish species *H. bispinis*, *H. georgianus*, *H. kerguelensis*, and *H. antarcticus* were sampled between 2015 and 2021 from 12 localities of the SO, including two localities in the Chilean Patagonia (PAT1 and PAT2), five localities in South Georgia, one locality in the Kerguelen Islands (KER), and four localities in the West Antarctic Peninsula (WAP1–WAP4), respectively (Fig. 1; Table 1). Individuals were euthanized using buffered seawater containing >250 mg/L benzocaine (BZ-20, Veterquímica) and were then conserved in absolute ethanol at 4°C until dissection. Once at the laboratory, the *Harpagifer* individuals were aseptically dissected to remove the intestinal content, and the gut mucosa were gently rinsed with nuclease-free sterile water (Winkler) and stored at –20°C until DNA extraction.

### Genomic DNA extraction, PCR amplification, and amplicon sequencing analysis

DNA was extracted from gut mucosa samples using the DNeasy PowerSoil Pro Kit (Qiagen), with a preliminary incubation at 65°C for 10 min followed by a homogenization step using a FastPrep-24 bead beating grinder (MP Biomedicals). The V3–V4 region of the bacterial 16S rRNA gene was amplified by touchdown PCR using the modified



**FIG 1** Sampled *Harpagifer* sp. populations across the Southern Ocean. The designation of sampling sites is detailed in Table 1. Both Antarctic Circumpolar Current (ACC) and Antarctic Polar Front (APF) are represented on the map.

Bakt\_341F/Bakt\_805R primer pair (40). PCR products were purified and sequenced using the paired-end sequencing technology ( $2 \times 300$  bp) on the Illumina MiSeq Sequencer at the University of Wisconsin–Madison Biotechnology Center’s DNA Sequencing Facility (USA). Reads of 16S rRNA gene were processed through MOTHUR (v1.48.0) (41), using the trimming criteria detailed in Schwob et al. (42). Processed sequences were clustered into OTUs at 97% similarity threshold similarity, discarding the OTUs conformed by a single sequence.

The host mitochondrial COI gene was amplified from the same DNA samples, using the FISH-F2/HCO2198-R primer pair (43, 44). Amplicons were purified and sequenced in both directions at Macrogen, Inc. (South Korea), using Sanger technology. Sequences of COI gene from the *Harpagifer* individuals were aligned, and polymorphic sites were visually checked in PROSEQ (45).

### Host genetic diversity, genetic distance, phylogeographic structure, and phylogenetic reconstruction

We estimated levels of polymorphism in *H. bispinis*, *H. georgianus*, *H. kerguelensis*, and *H. antarcticus* for the COI data sets in the ARLEQUIN software (v3.5.2) using standard diversity indices: haplotype number, number of polymorphic sites, haplotype diversity, average number of pairwise differences, and nucleotide diversity. Pairwise distances ( $p$ -distances) between species were calculated using Kimura-2-parameter. The statistical significance of genetic distances was assessed by conducting 10,000 permutations of individuals between the different species. The haplotype network was reconstructed

TABLE 1 Sampling locations of *Harpagifer* species and overview of amplicon sequencing data<sup>a,b</sup>

Species	Region	Locality	Date	GPS coordinates	N	N seq. (Relat. Abund.)
<i>Harpagifer antarcticus</i>	West Antarctic Peninsula (WAP)	Antarctic China Base "Great Wall," Fildes Peninsula, King George Island, South Shetland Islands (WAP1)	01-2020	62°12'28.20"S 58°57'38.00"W	10	318,876 (10.7)
		Antarctic Chilean Base "Captain Arturo Prat," Iquique Cove, Greenwich Island, South Shetland Islands (WAP2)	01-2018	62°28'43.84"S 59°40'14.90"W	10	490,478 (16.4)
		Antarctic Chilean Base "Yelcho," South Bay, Doumer Island, Antarctic Peninsula (WAP3)	01-2018	64°52'33.13"S 63°35'00.96"W	12	373,151 (12.5)
		Horseshoe, Marguerite Bay, Antarctic Peninsula (WAP4)	01-2022	67°53'32.82"S 67°24'17.34"W	10	247,211 (8.3)
<i>Harpagifer kerguelensis</i>	Kerguelen Islands (KER)	Port-aux-Français, Gulf of Morbihan, French Southern and Antarctic Lands	12-2015	49°21'13.32"S 70°13'56.76"E	11	255,340 (8.5)
<i>Harpagifer georgianus</i>	South Georgia Island (SOG)	Esbensen Bay	11-2021	54°52'0.96"S 35°57'46.98"W	7	297,991 (10.0)
		Gold Harbour	11-2021	54°36'59.16"S 35°55'15.90"W		
		Albatross Island, Sunset Fjord	11-2021	54°1'37.56"S 37°19'26.40"W		
		Sector Godthul	11-2021	54°17'24.12"S 36°17'6.30"W		
		Luck Point, Bay of Isles	11-2021	54°3'37.92"S 37°15'54.90"W		
<i>Harpagifer bispinis</i>	Chilean Patagonia (PAT)	Sector "Aguas Frescas," Punta Arenas, Strait of Magellan, Magallanes and Chilean Antarctica Region (PAT1)	02-2021	53°26'00.23"S 70°58'24.37"W	11	558,754 (18.6)
		Sector "Corrales Viejos," Puerto Williams, Navarino Island, Magallanes and Chilean Antarctica Region (PAT2)	04-2021	54°55'56.89"S 67°28'20.89"W	10	448,484 (15.0)

<sup>a</sup>N, number of individuals per species; N seq., total number of sequences after bioinformatic processing; Relat. Abund., relative abundance in the whole data set.

<sup>b</sup>Site abbreviations are presented in boldface.

<sup>c</sup>Given the low number of individuals per locality within the South Georgia Island, the samples from the five localities were pooled.

using the median joining method using Populational Analysis with Reticulate Trees software (PopART, v1.7.0) (46).

For phyllosymbiosis analysis, the phylogenetic tree of the 77 individual COI sequences was reconstructed using the PhyML algorithm with a GTR + G + I model, followed by extraction of phylogenetic pairwise distances based on branch lengths among *Harpagifer* individuals, using the APE package (v5.6-2) in R (v4.1.2). For co-phylogeny analysis, the phylogenetic tree of the haplotype sequences was reconstructed using PhyML algorithm, with a GTR + I model. Both phylogenetic trees of *Harpagifer* individual and haplotype sequences were reconstructed using NGPhylogeny (47), with substitution models chosen based on the implemented Smart Model Selection tool (SMS) and complemented by non-parametric SH-like branch supports, and were rooted using the midpoint rooting method (48) to avoid long-branch attraction.

### Statistic analyses for phyllosymbiosis detection

The bacterial OTU table was rarefied at 5,750 sequences and converted into Bray-Curtis and weighted UniFrac dissimilarity distance matrices. To test the effect of host species identity on *Harpagifer* GMM composition, a permutational multivariate analysis of variance (PERMANOVA) was performed using VEGAN (v2.6-2) and PAIRWISEADONIS (v0.4) R packages.

Due to substantial geographical distances among sites and the challenging access to these remote sites, sampling at the same time was unfeasible (Table 1). Therefore, a set of 14 environmental abiotic variables presumed important in influencing microbiome structure was extracted for each sampling locality from the Bio-ORACLE database (Fig. S1). This database offers dual benefits by covering all the sampling sites and providing averaged data over an extended period (i.e., 2000–2014), allowing us to mitigate the

unavoidable seasonal and annual variability of marine environmental properties (49). Additionally, to address potential intra-site depth variability during the sampling of *Harpagifer* individuals, the variables were extracted at the mean depth of each site. All the environmental variables, standardized to a mean of zero and a standard deviation of one, were analyzed using a principal component analysis. The scores of the samples on the first two principal components (capturing 91% the variability) were transformed into Euclidean distance using the `vegdist` function of the R package `VEGAN` (v2.6-2) and used as environmental distance matrix (Fig. S1).

The geographic distances among sampling localities were obtained by converting longitude and latitude coordinates into kilometers with the `earth.dist` function implemented in the `FOSSIL` package (50), followed by a transformation with the Hellinger method using the `decostand` function of the `VEGAN` package in R.

All matrices were standardized using the `scale` function implemented in R. The correlation between the dissimilarity distance matrix of the *Harpagifer* GMM with each one of the three explicative distance matrices (i.e., environmental, geographic, and host phylogeny) was examined with Mantel and partial Mantel tests implemented in `VEGAN`, using Pearson correlation and 9,999 permutations (51). Furthermore, the respective contribution to GMM composition of these explanatory matrices was inferred using the distance-based multiple matrix regression with randomization (MMRR) approach (52), implemented in the R package `POPGENREPORT` (v3.0.7).

### Core microbiome definition and neutral model fitting

To identify bacterial taxa that are common to the eight *Harpagifer* populations, a core microbiome was defined at the OTU level, based on a minimum prevalence criterion >40% across all gut mucosa samples from our data set, as used in previous studies (18). The relationship between the prevalence and abundance of core microbiome OTUs was compared to the neutral community model proposed by Sloan et al. (53) and formalized in R by Burns et al. (54). Well-predicted OTUs (i.e., with abundance and prevalence comprised within the 95% confidence limits of the model) are supposed to be driven by stochastic factors (e.g., dispersal and ecological drift), while OTUs that deviated from the 95% confidence interval (CI) of the neutral model predictions are more likely influenced by deterministic factors (e.g., host selection).

### Microdiversity analysis and co-phylogeny testing

The microdiversity of each core OTU ( $n = 17$ ) was resolved into oligotypes through the minimum entropy decomposition (MED) algorithm developed by Eren et al. (39). Briefly, MED allows discrimination of the biologically meaningful microdiversity contained within one OTU from the stochastic noise caused by random sequencing errors. The oligotypes' phylogenetic tree of each core OTU from the core microbiome was inferred using PhyML algorithm in `NGPhylogeny` (47), with the default parameters and model selection determined by the implemented SMS. Co-phylogeny patterns between the bacterial oligotypes and *Harpagifer* species phylogenetic trees were tested through a total of 10 runs with 999 permutations of the `ParaFit` function, implemented in the `APE` package (v5.6-2). The `ParaFit` function returned the relative contribution of each individual host-oligotype link to the co-phylogenetic model, with their associated  $P$ -values adjusted using the Benjamini-Hochberg procedure. For the graphical representation of the co-phylogeny pattern for the most abundant core OTU (OTU2), both host and symbiont trees were transformed into ultrametric trees, links with  $P$ -values >0.055 were pruned, and the tanglegram was edited using the R package `PHYTOOLS` (v1.0-3) (55). To further investigate the mechanism behind the co-phylogenetic pattern of OTU2, we used the Procrustean Approach to Co-phylogeny (PACo) (56) implemented in R (57) to assess the interdependence of one phylogeny on the other. Four randomization algorithms were tested in PACo—"r0," "c0," "quasiswap," and "r" models. The "r0" model (referred as "symbiont") posits that symbionts track hosts' evolution, while the "c0" model (referred as "host") assumes that hosts track symbionts' evolution. The

“quasiswap” model (referred as “undetermined”) does not infer direction in the tracking, and the “r2” model (referred as “specialist/generalist symbiont”) posits that symbionts track hosts’ evolution, with the co-phylogenetic signal influenced by the specialist/generalist feature of the symbionts (i.e., number of partners). The best co-phylogenetic model was determined by comparing the phylogenetic congruences of each model obtained through 20,000 permutations using the pairwise permutation test implemented in the R package *RCOMPANION* (v2.4.16). The haplotype network of the OTU2 was reconstructed as previously described for the host (Host genetic diversity, genetic distance, phylogeographic structure, and phylogenetic reconstruction section). Distance-based redundancy analysis (db-RDA) implemented in the R package *VEGAN* was used to quantify the contribution of the *Harpagifer* species to the variations in OTU2 oligotype composition.

## RESULTS

### *Harpagifer* genetic diversity and phylogeographic structure

The COI diversity indexes for each analyzed *Harpagifer* species are summarized in Table S1. A total of 81 partial sequences of 664 nucleotides length were obtained, and 25 haplotypes were identified from the complete data set (Table S2). Low p-distance values were found among species, ranging from 0.29% between *H. antarcticus* and *H. georgianus* to 0.96% between *H. bispinis* and *H. kerguelensis* (Table S3), suggesting a recent diversification of these four species. Permutation tests of individuals between species showed highly significant differentiation among species, except for the comparison between *H. antarcticus* and *H. georgianus* ( $P = 0.46$ ). Notably, the haplotype network reveals that *H. antarcticus* shared three haplotypes with *H. georgianus* (Fig. S2). Additionally, a single mutation distinguishes the *H. kerguelensis* haplogroup from the *H. antarcticus-georgianus* one, while a difference of three mutations distinguishes the *H. bispinis* haplogroup from the *H. antarcticus-georgianus* one, suggesting again the existence of three distinct groups corresponding to Patagonian populations (PAT1 and PAT2, hereafter called PAT), Kerguelen Islands population (KER), and Antarctic and South Georgia populations (WAP and SOG) (Fig. S2; Table S3).

### *Harpagifer* species identity influences its gut mucosa microbiome

Out of the 81 *Harpagifer* individuals sampled, 77 gut mucosa samples were successfully processed through metabarcoding, resulting in 2,990,285 cleaned sequences partitioned into 34,419 OTUs at 97% (Table 1). A weak but significant effect of *Harpagifer* species identity on GMM composition was detected through PERMANOVA using both Bray-Curtis (F-statistics = 4.46,  $R^2 = 0.15$ ,  $P < 0.001$ ) and weighted UniFrac metrics (F-statistics = 4.33,  $R^2 = 0.15$ ,  $P < 0.001$ ). All pairwise comparisons of GMM compositions among *Harpagifer* species were significantly different (pairwise PERMANOVA,  $P < 0.04$ ) except between *H. antarcticus* (WAP) and *H. georgianus* (SOG) (Table S4), mirroring the absence of genetic differentiation among host haplotypes from these two regions (Fig. S2). The differences in microbiome composition between gut mucosa from KER and PAT were weak (pairwise PERMANOVA,  $P = 0.04$ ), echoing the relatively more similar seawater properties of these two regions (Fig. S1).

### Significant phylosymbiosis of *Harpagifer* species and their gut mucosa microbiome

To gain further insights into the assembly mechanisms of the *Harpagifer* GMM, we tested whether the Bray-Curtis dissimilarity distance correlates with the geographic, environmental, and host phylogenetic distance matrices. The Mantel correlation tests revealed that environment, host phylogeny, and geography explained significant and relatively comparable amounts of variability in GMM of *Harpagifer* species (Table 2). When evaluating the independent effect of each explanatory matrix by controlling for the influence of other matrices variations with partial Mantel tests, both the host



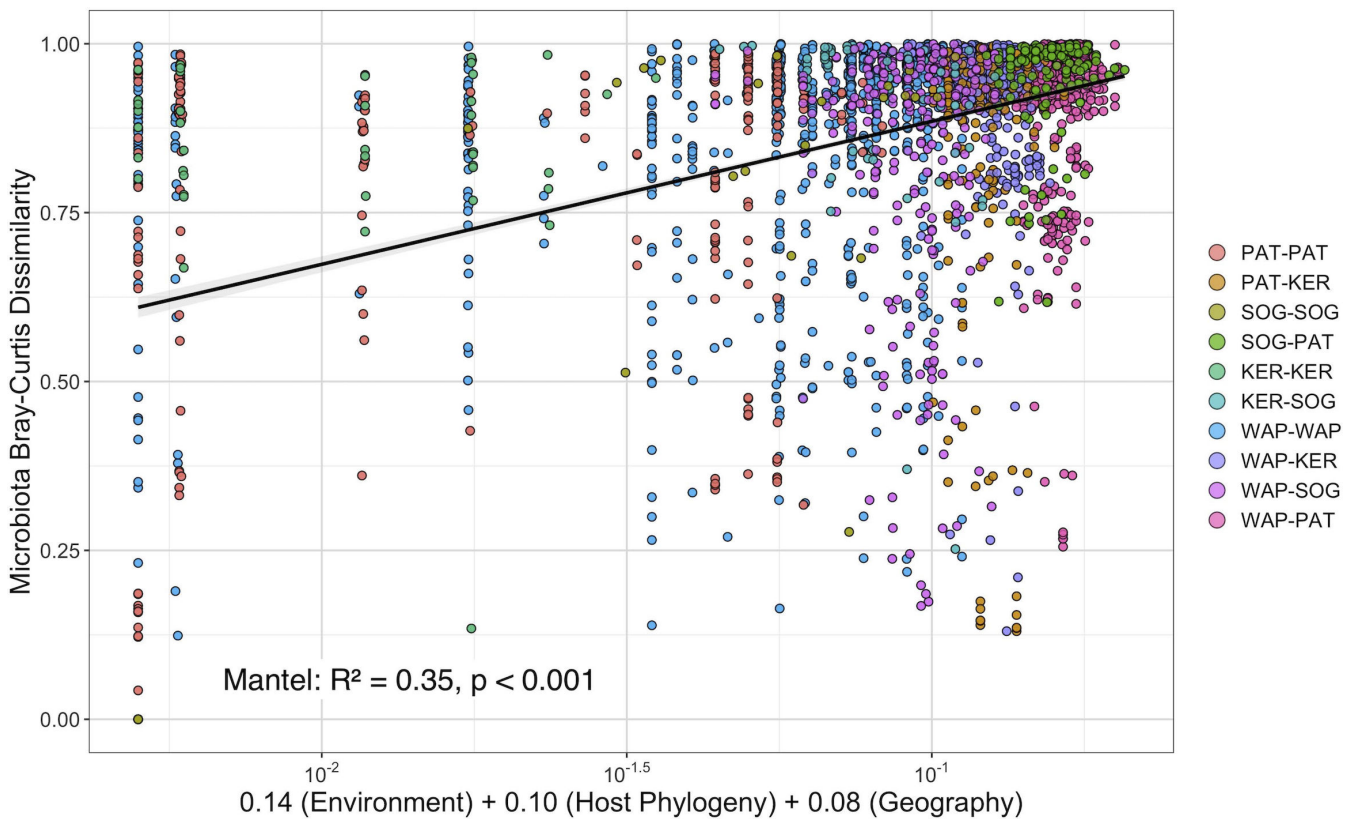
**TABLE 2** Mantel test analysis on GMM of *Harpagifer* spp., using Bray-Curtis distances<sup>a</sup>

Factors	Statistical test	R <sup>2</sup>	P-value
Environmental distance	Mantel	0.33	<0.001
Geographic distance	Mantel	0.22	<0.001
Host phylogeny	Mantel	0.31	<0.001
Environmental   Geographic	Partial Mantel	0.27	<0.001
Environmental   Host phylogeny	Partial Mantel	0.15	<0.001
Geographic   Environmental	Partial Mantel	0.10	<0.001
Geographic   Host phylogeny	Partial Mantel	0.14	<0.001
Host phylogeny   Environmental	Partial Mantel	0.08	<0.001
Host phylogeny   Geographic	Partial Mantel	0.27	<0.001

<sup>a</sup>A total of 10,000 permutations were performed. P-values in boldface are considered as significant ( $\alpha = 0.05$ ). For partial Mantel, the vertical bar “|” means “controlling for.”

phylogeny and the environment (and to a lower extent the geography) still significantly correlated with beta-diversity variations of *Harpagifer* GMM, even though with reduced explanatory power (Table 2). When dissimilarities of *Harpagifer* GMM were calculated using the weighted UniFrac metric, the degrees of correlation were lower and homogeneous across the explanatory matrices, remaining statistically significant (Table S5).

When examined through the MMRR analysis, the relative contribution of each matrix on bacterial composition of *Harpagifer* GMM remained consistent with the previous Mantel tests, with the highest contribution for the environment (coefficient of 0.14,  $P < 0.001$ ), followed by the host phylogeny (coefficient of 0.10,  $P < 0.001$ ) and geography (coefficient of 0.08,  $P < 0.001$ ). The Mantel test performed with the combined distance



**FIG 2** Scatter plots showing the relationship between the Bray-Curtis dissimilarity of *Harpagifer* mucosa microbiome and the joint effect of host phylogenetic, geographic, and marine environmental distances based on the results of a multiple matrix regression with randomization analysis. Color of the points represents pairwise comparisons among sampling localities.

matrix computed from the three original ones weighted by their respective MMRR coefficient provided the best-fit model ( $R^2 = 0.35, P < 0.001$ ) (Fig. 2).

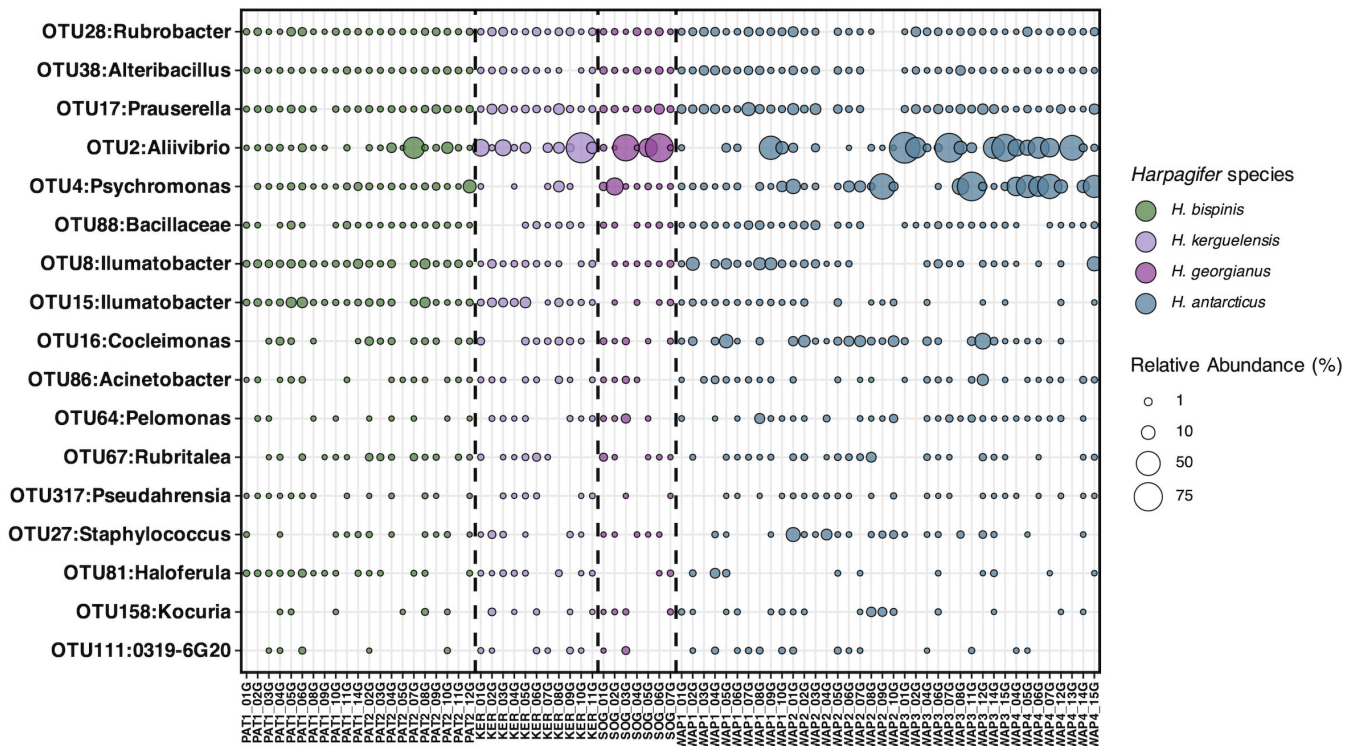
### Reduced core microbiome in *Harpagifer* spp. gut mucosa

A reduced core microbiome comprising 17 OTUs was detected across all *Harpagifer* species studied (Fig. 3). Constituting less than 0.2% of the total OTU richness in GMM, this core microbiome exhibited a relative abundance of  $22.5\% \pm 2.9\%$  in gut mucosa samples, encompassing representatives from nine bacterial classes, predominantly within the Gammaproteobacteria phylum (Table 3). Prevalence of core OTUs ranged from 40% up to 96% of the gut mucosa samples. Two core OTUs were particularly abundant (OTU2 and OTU4, representing 12.6% and 6.9% of the total relative abundance in the whole GMM data set, respectively), while the 15 others had relative abundance  $<0.9\%$  (Table 3).

The fitting of GMM composition to the neutral model was relatively low, explaining no more than 20% of the gut microbiome variance of *Harpagifer* ( $m = 0.004, R^2 = 0.20$ , Fig. 4). Remarkably,  $>88\%$  of the core OTUs had an abundance-prevalence relationship that deviated from the neutral model predictions; most of them being either over- or under-represented (Fig. 4; Table 3).

The most abundant and prevalent OTU in the core microbiome of *Harpagifer*, namely, OTU2 affiliated with *Aliivibrio*, exhibited a lower frequency (and higher abundance) than the 95% CI predicted by the neutral model, suggesting that this OTU is either selected against by the host (i.e., invasive pathogenic taxa) or experience significant dispersal limitations (i.e., low probability of successful host colonization).

A total of 393,084 sequences, constituting 51% of the GMM, were affiliated with the *Aliivibrio* genus. Notably, OTU2 accounted for 99.4% of these sequences and, consequently, is referred to hereafter as *Aliivibrio*. The closest sequence retrieved from Blast



**FIG 3** Bubble plot of core microbiome mucosa from *Harpagifer* sp. gut mucosa defined at  $>40\%$  prevalence across samples. Relative abundances are presented per sample, with distinct colors assigned to different *Harpagifer* species, visually demarcated by dashed lines. The taxonomic affiliations of the core OTUs are provided at the genus level, except for OTU88, which is identified at the family level. Specific relative abundance values of the core OTUs can be found in Table 3. Sample names are provided in x-axis, with the first four characters corresponding to the sampling site designation (see Table 1), and followed by the number of the *Harpagifer* individual.

TABLE 3 Fit of the core microbiome taxa from *Harpagifer* sp. gut mucosa to the co-phylogenetic model at the microdiversity level<sup>a</sup>

OTU	Class	Final affiliation	Prev.	Rel. Abund.	Neutral model	Oligotype richness	ParaFit statistic	ParaFit P-value	Links		
									WAP/SOG	KER	PAT
OTU28	Rubrobacteria	Rubrobacter	96.1	0.20	Over	71	ns <sup>b</sup>	ns	–	–	–
OTU38	Bacilli	Alteribacillus	93.4	0.34	Over	121	ns	ns	–	–	–
OTU17	Actinobacteria	Prauserella	93.4	0.86	Over	63	ns	ns	–	–	–
OTU4	Gammaproteobacteria	Psychromonas	82.9	6.90	Under	84	ns	ns	–	–	–
<b>OTU2<sup>d</sup></b>	<b>Gammaproteobacteria</b>	<b>Aliivibrio</b>	<b>81.6</b>	<b>12.60</b>	<b>Under</b>	<b>109</b>	<b>0.066 ± 0</b>	<b>0.001 ± 0.000</b>	<b>56.0</b>	<b>16.2</b>	<b>27.8</b>
OTU88	Bacilli	Bacillaceae	80.3	0.15	Over	38	ns	ns	–	–	–
OTU8	Acidimicrobiia	Ilumatobacter	80.3	0.77	Fitted	109	0.147 ± 0	0.001 ± 0.000	1.1	1.8	97.1
OTU15	Acidimicrobiia	Ilumatobacter	71.0	0.32	Over	130	ns	ns	–	–	–
OTU16	Gammaproteobacteria	Cocleimonas	67.1	0.69	Fitted	243	1.321 ± 0	0.001 ± 0.000	65.7	0.0	34.3
OTU86	Gammaproteobacteria	Acinetobacter	64.5	0.12	Over	69	0.007 ± 0	0.011 ± 0.001	54.2	16.7	29.2
OTU64	Gammaproteobacteria	Pelomonas	60.5	0.10	Over	31	ns	ns	–	–	–
OTU67	Verrucomicrobiae	Rubritalea	60.5	0.13	Over	104	0.580 ± 0	0.001 ± 0.000	51.9	2.8	45.3
OTU317	Alphaproteobacteria	Pseudahrensia	56.6	0.01	Over	18	ns	ns	–	–	–
OTU27	Bacilli	Staphylococcus	53.9	0.18	Over	90	0.015 ± 0	0.004 ± 0.001	22.2	11.1	66.7
OTU81	Verrucomicrobiae	Haloferula	46.1	0.11	Over	94	0.033 ± 0	0.001 ± 0.001	55.4	1.2	44.6
OTU111	Oligoflexia	0319-6G20	40.8	0.08	Over	32	ns	ns	–	–	–
OTU158	Actinobacteria	Kokuria	40.3	0.08	Over	33	0.003 ± 0	0.046 ± 0.002	72.7	0.0	27.3

<sup>a</sup>Prev., OTU prevalence (%) among all samples of the data set; Rel. Abund., relative abundance (%) of the OTU within the gut mucosa data set. Mean values with standard errors are presented for the global ParaFit statistics and P-values. Links WAP/SOG, KER, and PAT (%), percentage of significant links involving *Harpagifer* haplotypes from West Antarctic Peninsula and South Georgia, Kerguelen Islands, and Patagonia, respectively.

<sup>b</sup>ns, non-significant p-value.

<sup>c</sup>–, Undetermined.

<sup>d</sup>Selected OTU for further analysis and graphical representation.

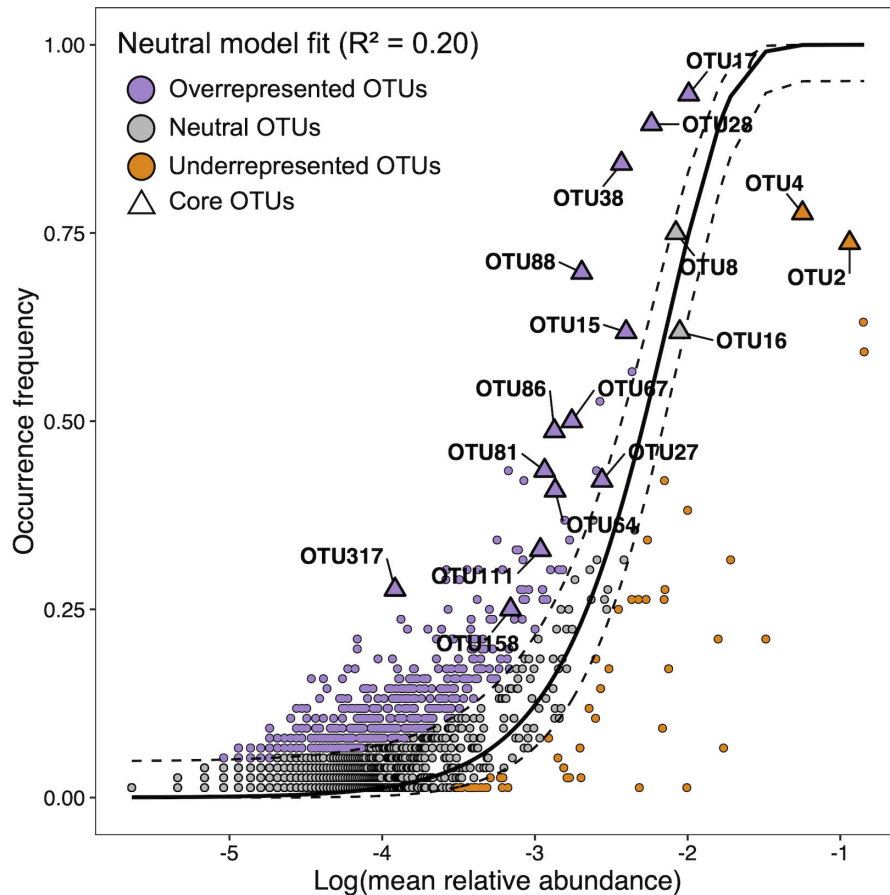
analysis of the *Aliivibrio* representative sequence matched with an uncultured bacterium clone (99.3% identity), previously retrieved from the gut of *Notothenia coriiceps* (suborder Notothenioidei) fished in the Antarctic Peninsula (23).

### Co-phylogeny between *Harpagifer* species and some core members of the gut mucosa microbiome

Eight out of the 17 core OTUs harbored significant signatures of co-phylogeny at the microdiversity level with *Harpagifer* spp. ( $P < 0.05$  for each OTU) (Table 3), suggesting that the evolution of these gut mucosa OTUs and their hosts was not independent (rejection of the  $H_0$  of Parafit test). The fit values were relatively low (ParaFit statistic  $< 1.3$ ), suggesting that external factors would also shape the observed patterns of co-phylogeny. Due to the absence of differences in GMM composition and host genetic divergence, WAP and SOG were combined in the results presentation of the host-oligotype links and co-phylogenetic representation. The proportion of significant links (i.e., associations between specific bacterial oligotypes and a given host species) involving WAP/SOG and PAT populations was globally similar, representing  $47.4\% \pm 8.4\%$  and  $46.5\% \pm 8.6\%$  of all significant links, respectively. Contrastingly, fewer links involving *Harpagifer* haplotypes from KER contributed to the global fit of the co-phylogeny model ( $8.3\% \pm 2.6\%$ ) (Table 3).

Due to its high abundance and prevalence in the GMM (deviating from neutral model predictions) and its significant co-phylogeny signal, a special interest was given to the *Aliivibrio* genus. The db-RDA analysis confirmed a significant influence of the host species identity on *Aliivibrio* oligotype composition ( $R^2 = 0.07$ ,  $P < 0.01$ , Fig. 5A). Pairwise PERMANOVA comparisons showed that *Aliivibrio* oligotype composition was only different between *H. antarcticus* from WAP and *H. bispinis* from PAT ( $R^2 = 0.05$ ,  $P = 0.001$ ). The oligotype network of *Aliivibrio* graphically confirmed that most of the predominant oligotypes were principally shared among SOG, WAP, and KER regions, while the PAT oligotypes tended to be more exclusive to this region (Fig. 5B).

Beyond the qualitative effect of the host species identity, the phylogeny of *Aliivibrio* mirrors the phylogenetic patterns in *Harpagifer* (Fig. 5C). The significant links involved

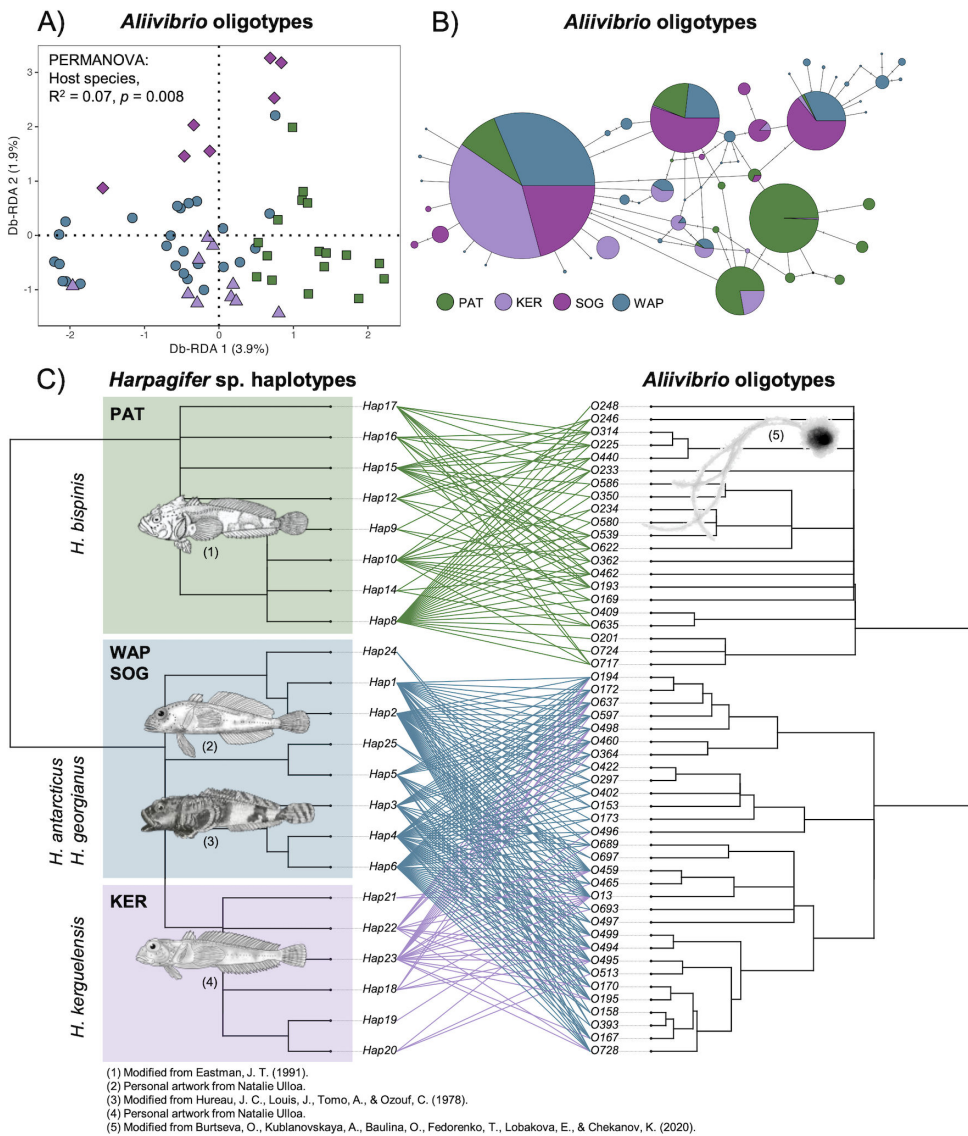


**FIG 4** Neutral model fit for the gut mucosa microbiome (solid dark line) with bootstrap 95% CI (dashed dark line). OTUs depicted in gray have a frequency of occurrence in the metacommunity congruent to their abundance under the neutral model hypothesis. OTUs appearing above the 95% CI (purple) or below the 95% CI (orange) are significantly more frequent (overrepresented) or less frequent (underrepresented), respectively, than predicted by the model in the metacommunity of *Harpagifer* gut mucosa microbiome. Triangles designate the OTUs that were identified as part of the gut mucosa core microbiome.

22 host haplotypes (out of the 25) and 51 *Aliivibrio* oligotypes (out of 60). The *Aliivibrio* oligotypes conformed two distinct clades, potentially representing below-genus divergence at the 16S V3–V4 locus. The *Aliivibrio* oligotypes significantly associated with *H. bispinis* clustered separately from the oligotypes significantly associated with all the other *Harpagifer* species, while *Aliivibrio* oligotypes significantly associated with *H. kerguelensis*, *H. antarcticus*, and *H. georgianus* clustered together, consistently with the host haplotypes clustering (Fig. 5C). PACo analysis of *Aliivibrio* oligotypes revealed that the “r2” model led to the highest phylogenetic congruence between host and microbe phylogenies, suggesting that the *Aliivibrio* phylogeny is driven by *Harpagifer* phylogeny (and not the opposite) and that the degree of specialization of *Aliivibrio* oligotypes (quantified by the number of associations with *Harpagifer* haplotypes) also contributed to the global fit of the co-phylogeny model (Fig. S3).

## DISCUSSION

In this study, we investigated how the evolutionary changes among *Harpagifer* closely related species associate with structural changes in their GMM. To the best of our knowledge, this study represents the first large-scale characterization of the GMM of a fish genus inhabiting the SO. In natural systems, environment, geography, and host phylogeny are generally confounded in the microbiota assembling among different



**FIG 5** Example of co-phylogenetic pattern among *Aliivibrio* and *Harpagifer* spp. (A) Distance-based redundancy analysis (db-RDA) quantifying the contribution of the host species to explain the variations in *Aliivibrio* oligotypes composition in *Harpagifer* sp. gut microbiome. (B) Median joining network of *Aliivibrio* oligotypes. Colors are assigned to the host biogeographic regions. The size of the circles is scaled on oligotypes' frequencies. (C) Pruned tanglegram of the co-phylogenetic relationships between 22 *Harpagifer* haplotypes and 51 *Aliivibrio* oligotypes. The *Harpagifer* and *Aliivibrio* trees are ultrametric. The significant links between *Harpagifer* haplotypes and *Aliivibrio* oligotypes were plotted in the figure (ParaFit,  $P < 0.05$ ).

species (4, 10). However, controlling the environmental conditions to isolate the contribution of host genetics also distorts the “wild” microbiome, since the host must be maintained in captivity (58, 59). Moreover, the phylosymbiosis can emerge from various sources, including host evolutionary history, shared ecology linked to phylogenetically conserved host traits (e.g., diet, habitat, and host immune systems), and vertical transmission of microbiome; its detection is independent of inferring the underlying mechanisms and does not necessarily require overlapping distribution of the different species tested (16, 60). Therefore, combining a broad sampling strategy of *Harpagifer*, encompassing the three major biogeographic regions of its distribution area across the SO, and adapting statistical tools to explore the relative contributions of each factor (i.e., Mantel and MMRR) are valid approaches to provide a comprehensive evaluation of *Harpagifer* GMM assembly factors and to detect phylosymbiosis (4, 61).

Our findings indicate that *Harpagifer* host identity contributed to the variations observed in GMM composition, albeit to a limited extent. This result suggests that, despite their distribution in distinct biogeographic regions, different *Harpagifer* species still share similar ecology leading to relatively similar gut microbial communities, as expected in recent allopatric speciation scenario (6, 16) and in line with existing knowledge regarding the dietary consistency among these species (35, 36). Beyond the mere host species identity effect, we showed that the phylogenetic distances among *Harpagifer* host species substantially correlate with gut bacterial dissimilarity distances, thus fulfilling the two central tenets associated with phylosymbiosis signature (6, 10). In other terms, when conducting pairwise comparisons among *Harpagifer* species—except for the comparison between *H. georgianus* and *H. antarcticus*—the gut microbiomes show greater similarity among individuals of the same species compared to individuals of different species, and these similarities are congruent with the branching pattern of the species phylogeny. Studies investigating phylosymbiosis in the gut microbiome of anciently diverged wild marine fish are sparse, and the reported cases vary from absent to moderate signal, with a limited understanding of the factors that influence its intensity (22, 62, 63). In agreement with our hypothesis, the recent allopatric diversification of the *Harpagifer* genus across the SO is associated with a clear phylosymbiosis signal, thus expanding to marine fish the statement that phylosymbiosis strength among vertebrates and their microbiomes depends on the age of the last common ancestor (16). Although phylosymbiosis alone could arise from different evolutionary mechanisms unrelated to co-diversification, such as host filtering (12), its detection provides a strong basis for further investigating co-phylogeny of specific bacterial taxa shared among *Harpagifer* species (64).

Descriptions of core gut microbiomes in different species of wild marine fishes are rare and have been exclusively achieved so far across sympatric species from the same diet category (65–67). Huang et al. (68) did not find any common taxa in the gut microbiome of 20 marine fish species from coastal waters of Hong Kong, due to the high dependency of the gut core microbiome on the host's feeding habits. Here, we revealed the existence of a core microbiome across gut mucosa of four *Harpagifer* species (77 individuals) distributed in three geographically distant regions of the SO. This core was characterized by a relatively low diversity compared to the total OTU richness in GMM and by the high dominance of a single taxon, as previously reported in fish core microbiomes (68–70). While the persistence over time of the core taxa remains undetermined, the observation that most of these OTUs deviated from neutral model predictions and were detected across large geographical distances suggests a major role of *Harpagifer* selective constraints in the recruitment, assembly, and maintenance of its gut microbiome (70).

Around half of the core bacterial taxa harbored strong signal of co-phylogeny with *Harpagifer* at microdiversity resolution. These taxa are expected to present a certain degree of host specificity and to share at least some part of the host evolutionary history (4, 71). This result constitutes an unprecedented step forward in the understanding of marine fish holobiont, considering that most of the studies so far barely detected phylosymbiosis. Interestingly, the most abundant and prevalent taxon of the core GMM exhibited a significant co-phylogenetic pattern. This taxon belonged to the *Aliivibrio* genus, which has been identified in the past as a major component of the gut microbiome of notothenioid fishes (23, 24), and frequently associated with other fish species such as the European seabass and Atlantic salmon (72, 73). While there is no direct evidence of its ecological role in the fish holobiont, some authors suggest that *Aliivibrio* would be commensals and able to readily colonize the fish intestines (24, 74) and form biofilm onto intestine mucosa surface (75, 76). This commensalism would be mediated by the capacity of *Aliivibrio* to degrade chitin, a highly conserved metabolism in the *Vibrionaceae* family, previously confirmed by the detection of chitinase activity in some *Aliivibrio* strains (77). Chitin is the most abundant biopolymer in the ocean (78), since it constitutes the exoskeleton of crustaceans such as copepods, amphipods, and krill

(79, 80). These crustaceans are dominant in the diet of *H. antarcticus*, *H. georgianus*, and *H. bispinis*, comprising between 70% and 100% of the biomass ingested (35, 36). Additionally, *Aliivibrio*, along with other together with other *Vibrionaceae*, are common members of crustacean microbiota, such as copepods (81). Furthermore, as the microbial metabolization of chitin aminopolysaccharide provides substantial source of carbon and nitrogen easily accessible for the host, a mutualistic cross-feeding is imaginable between *Harpagifer* and *Aliivibrio*, providing an ecological advantage to the holobiont (82, 83). Alternatively, other studies described the opportunistic and potentially pathogenic status of *Aliivibrio* strains inhabiting the intestinal tract of fishes (73, 74). The deviation of *Aliivibrio* (i.e., occurring less frequently than expected by the neutral model analysis) suggests a selection against it by the host, in line with a possible parasitic behavior of *Aliivibrio* (i.e., more abundant than expected) (54, 73).

Since several *Aliivibrio* oligotypes co-occurred within the same *Harpagifer* species and several *Harpagifer* species hosted the same *Aliivibrio* strain, we characterized the *Harpagifer*-*Aliivibrio* holobiont as a diffuse symbiosis (11). Unlike specialist symbionts that are highly specific to their hosts associations, more generalist symbionts generally show low phylogenetic congruence with their hosts (84). Accordingly, we found that the *Aliivibrio* oligotypes were less specific to the haplotypes of *H. kerguelensis* from KER, being frequently associated with *H. antarcticus* and *H. georgianus* haplotypes from WAP/SOG as evidenced by the links in the tanglegram representation. It is highly unlikely that this unspecific interactions' pattern resulted from the unbalanced sampling of *Harpagifer* individuals across biogeographic region, as consistent numbers of host haplotypes were identified (i.e., WAP/SOG: 9, KER: 6, PAT: 10). We rather suggest that repeated host switch events generate the imperfect match between *Aliivibrio* and *Harpagifer* phylogenies. Although the transmission mode of *Aliivibrio* symbionts remains unknown, the diffuse symbiose and low phylogenetic congruence patterns suggest a horizontal transmission, either potentially widespread and repeatedly acquired from the surrounding environment or vertically transmitted from parent to offspring (11), facilitating colonization of novel *Harpagifer* specimens and recurrent host-switch events. Although specific data on the relative abundance of planktonic *Aliivibrio* in the Southern Ocean are lacking, a plausible explanation for the widespread detection of *Aliivibrio* sp. in fishes is the frequent colonization of new individuals within a same fish species through the excretion of *Aliivibrio*-rich feces into the surroundings (74). Moreover, as other *Vibrionaceae*, *Aliivibrio* is predominantly found attached to zooplankton rather than existing in a free-living state in seawater (85), possibly explaining its facile colonization of *Harpagifer* gut.

A strong co-phylogeny signal was observed between *Harpagifer* and *Aliivibrio*, mostly driven by the Patagonian and Antarctic/South Georgian oligotypes of *Aliivibrio* conforming two distinct sub-clades predominantly associated with their respective *Harpagifer* host species. According to PACo analyses, the most likely co-phylogenetic model was the adaptive tracking of *Harpagifer* phylogeny by *Aliivibrio*, suggesting that the diversification of *Aliivibrio* would result from unidirectional selection toward *Harpagifer* rather than independent response to a same biogeographic event or co-evolution (5, 56). Taking together, these results indicate that the biogeographic event experienced by *Harpagifer* [i.e., intensification of the Antarctic Polar Front (APF) (34)] leading to the speciation of *H. bispinis* by vicariance indirectly generated the co-diversification of its specific *Aliivibrio* symbionts. An important prerequisite to this geographic model of co-diversification proposed by Groussin et al. (9) is the dispersal limitation of the microbial symbionts. The absence of significant links between *Aliivibrio* oligotypes from the PAT-related sub-clade with the *Harpagifer* haplotypes from WAP/SOG and KER and the phylogeographic structure observed in *Aliivibrio* oligotypes network support the relatively limited dispersal capacity between these two regions (54). Consistently, a previous study demonstrated that the APF limits the genetic connectivity among marine bacterial populations associated to invertebrate gut mucosa (i.e., sea urchin *Abatus*) from ANT and PAT (86). Contrastingly, some *Aliivibrio* oligotypes indifferently

associate with *H. kerguelensis* and *H. antarctica*, further emphasizing that unlike host specimens, bacterial populations from ANT and KER may be occasionally interconnected generating a more diffuse pattern of association and counteracting *Aliivibrio* vicariance (86, 87). Alternatively, given the potentially more recent divergence of *H. antarcticus*/*H. georgianus* and *H. kerguelensis* (p-distances <1.62), compared to *H. antarcticus* and *H. bispinis* (p-distance >4.2), it is plausible that the low mutation rate of the 16S rRNA gene hinders the complete discrimination of *Aliivibrio* strains associated with these three species (8). On the host side, the COI gene appears to be insufficient to fully discriminate *H. antarcticus* from *H. georgianus* species, probably due to the result of maintenance of ancestral polymorphism or incomplete lineage sorting (88). Future investigations will need to incorporate more resolute genetic markers for both host and bacterial symbionts, along with the *Harpagifer* species not covered in our study, to fully resolve the co-phylogeny between the two partners. Finally, the synchronicity of *Harpagifer* and *Aliivibrio* divergence requires further exploration using a robust time-calibrated phylogeny of the symbiont to confirm the strict co-diversification of hosts and symbiont speciation times (9).

In conclusion and contrastingly to the previously studied fish models, we revealed that host phylogeny was a substantial predictor of GMM composition of *Harpagifer*. Our survey represents the most conclusive evidence to date that phylosymbiosis and co-phylogeny occur between teleost fishes and their microbiome across the SO and that recently diverged closely related species are suitable models to unravel phylogenetic congruency signals. We identified a small subset of bacterial taxa harboring robust co-phylogeny signal, largely dominated by *Aliivibrio*. These taxa are good candidates for further genomic-based exploration of their metabolic and ecological roles, due to their supposed tight and/or long-term interdependence with *Harpagifer*. While the co-diversification of *Harpagifer* and *Aliivibrio* remains to be confirmed, we provide a foundation to explore the mechanisms behind co-phylogeny signatures, notably by understanding the contribution of host biogeography into the diversification process of its symbionts.

## ACKNOWLEDGMENTS

This work was financially supported by the ANID-Millennium Science Initiative Program, ICN2021\_002. The authors thank the French Polar Institute project 1044 PROTEKER for field access and the University of Wisconsin Biotechnology Center DNA Sequencing Facility (Research Resource Identifier, RRID:SCR\_017759) for providing MiSeq sequencing facilities and services. This research was partially supported by the supercomputing infrastructure of the NLHPC (CCSS210001). We would like to express our gratitude to Zambra Lopez, Francisco Bahamondes, and Javier Cárcamo for their contributions in field sampling. We also thank Sebastián Rosenfeld and Natalie Ulloa for their graphical contributions to this study.

This study was supported by the ANID FONDECYT Postdoctoral Project (grant no. 3200036), ANID FONDECYT Regular Projects (grants no. 1151336 and 1211672), and ANID-Millennium Science Initiative Program (ICN2021\_002).

E.P., J.O., L.C., and G.S. conceived and developed the study. G.S. secured the research funds. E.P., K.G., T.S., L.C., and G.S. contributed to the field work. G.S. performed the laboratory work and analyzed the molecular data. G.S. generated and analyzed the figures. G.S. drafted the manuscript, and all authors revised it and approved its final version.

## AUTHOR AFFILIATIONS

<sup>1</sup>Millennium Institute Biodiversity of Antarctic and Subantarctic Ecosystems (BASE), Santiago, Chile

<sup>2</sup>Department of Ecological Sciences, Faculty of Sciences, University of Chile, Santiago, Chile

<sup>3</sup>Institute of Ecology and Biodiversity, Santiago, Chile



<sup>4</sup>Aix Marseille University, Univ Toulon, CNRS, IRD, Mediterranean Institute of Oceanography (MIO) UM 110, Marseille, France, Marseille, France

<sup>5</sup>UMR 6282 Biogeosciences, University Bourgogne Franche-Comté, CNRS, EPHE, Dijon, France

<sup>6</sup>Laboratory of Antarctic and Subantarctic Marine Ecosystems, Faculty of Sciences, University of Magallanes, Punta Arenas, Chile

<sup>7</sup>Cape Horn International Center, Puerto Williams, Chile

## AUTHOR ORCID*s*

Guillaume Schwob  <http://orcid.org/0000-0003-0996-4060>

Léa Cabrol  <http://orcid.org/0000-0003-0417-2021>

## FUNDING

Funder	Grant(s)	Author(s)
<a href="#">ANID FONDECYT Postdoctoral Project</a>	3200036	Guillaume Schwob
<a href="#">ANID FONDECYT Regular Project</a>	1211672	Guillaume Schwob Léa Cabrol Julieta Orlando Elie Poulin
<a href="#">ANID-Millennium Science Initiative Program</a>	ICN2021_002	Guillaume Schwob Léa Cabrol Julieta Orlando Karin Gérard Elie Poulin

## AUTHOR CONTRIBUTIONS

Guillaume Schwob, Conceptualization, Data curation, Formal analysis, Funding acquisition, Investigation, Methodology, Project administration, Visualization, Writing – original draft, Writing – review and editing | Léa Cabrol, Conceptualization, Investigation, Validation, Writing – review and editing | Thomas Saucède, Investigation, Validation, Writing – review and editing | Karin Gérard, Investigation, Validation, Writing – review and editing | Elie Poulin, Conceptualization, Investigation, Supervision, Validation, Writing – review and editing | Julieta Orlando, Conceptualization, Investigation, Supervision, Validation, Writing – review and editing

## DATA AVAILABILITY

Amplicon sequences of 16S rRNA and COI have been deposited in the National Center for Biotechnology Information (NCBI), under the Sequence Read Archive (SRA) [PRJNA803378](#), and in GenBank under the accession numbers [ON891147](#) to [ON891171](#), respectively.

## ETHICS APPROVAL

Animal management was approved by the Universidad de Chile Institutional Animal Care and Use Committee (resolution no. 20363-FCS-UCH).

## ADDITIONAL FILES

The following material is available [online](#).

## Supplemental Material

Supplemental material (Spectrum03830-23-s0001.docx). Figures S1 to S3 and Tables S1 to S5.

## Open Peer Review

PEER REVIEW HISTORY (review-history.pdf). An accounting of the reviewer comments and feedback.

## REFERENCES

1. Theis KR, Dheilly NM, Klassen JL, Brucker RM, Baines JF, Bosch TCG, Cryan JF, Gilbert SF, Goodnight CJ, Lloyd EA, Sapp J, Vandenkoornhuysen P, Zilber-Rosenberg I, Rosenberg E, Bordenstein SR. 2016. Getting the hologenome concept right: an eco-evolutionary framework for hosts and their microbiomes. *mSystems* 1:e00028-16. <https://doi.org/10.1128/mSystems.00028-16>
2. Simon J-C, Marchesi JR, Mougil C, Selosse M-A. 2019. Host-microbiota interactions: from holobiont theory to analysis. *Microbiome* 7:5. <https://doi.org/10.1186/s40168-019-0619-4>
3. Rosenberg E, Zilber-Rosenberg I. 2018. The hologenome concept of evolution after 10 years. *Microbiome* 6:78. <https://doi.org/10.1186/s40168-018-0457-9>
4. O'Brien PA, Webster NS, Miller DJ, Bourne DG. 2019. Host-microbe coevolution: applying evidence from model systems to complex marine invertebrate holobionts. *mBio* 10:e02241-18. <https://doi.org/10.1128/mBio.02241-18>
5. Althoff DM, Segraves KA, Johnson MTJ. 2014. Testing for coevolutionary diversification: linking pattern with process. *Trends Ecol Evol* 29:82–89. <https://doi.org/10.1016/j.tree.2013.11.003>
6. Moran NA, Sloan DB. 2015. The hologenome concept: helpful or hollow? *PLoS Biol* 13:e1002311. <https://doi.org/10.1371/journal.pbio.1002311>
7. Rasmussen JA, Kiilerich P, Madhun AS, Waagbø R, Lock E-J, Madsen L, Gilbert MTP, Kristiansen K, Limborg MT. 2023. Co-diversification of an intestinal *Mycoplasma* and its salmonid host. *ISME J* 17:682–692. <https://doi.org/10.1038/s41396-023-01379-z>
8. Moeller AH, Sanders JG, Sprockett DD, Landers A. 2023. Assessing co-diversification in host-associated microbiomes. *J Evol Biol* 36:1659–1668. <https://doi.org/10.1111/jeb.14221>
9. Groussin M, Mazel F, Alm EJ. 2020. Co-evolution and co-speciation of host-gut bacteria systems. *Cell Host Microbe* 28:12–22. <https://doi.org/10.1016/j.chom.2020.06.013>
10. Brooks AW, Kohl KD, Brucker RM, van Opstal EJ, Bordenstein SR. 2016. Phylosymbiosis: relationships and functional effects of microbial communities across host evolutionary history. *PLoS Biol* 14:e2000225. <https://doi.org/10.1371/journal.pbio.2000225>
11. Hayward A, Poulin R, Nakagawa S. 2021. A broadscale analysis of host-symbiont cophylogeny reveals the drivers of phylogenetic congruence. *Ecol Lett* 24:1681–1696. <https://doi.org/10.1111/ele.13757>
12. Moran NA, Ochman H, Hammer TJ. 2019. Evolutionary and ecological consequences of gut microbial communities. *Annu Rev Ecol Syst* 50:451–475. <https://doi.org/10.1146/annurev-ecolsys-110617-062453>
13. Bordenstein SR, Theis KR. 2015. Host biology in light of the microbiome: ten principles of Holobionts and Hologenomes. *PLoS Biol* 13:e1002226. <https://doi.org/10.1371/journal.pbio.1002226>
14. O'Brien PA, Andreakis N, Tan S, Miller DJ, Webster NS, Zhang G, Bourne DG. 2021. Testing cophylogeny between coral reef invertebrates and their bacterial and archaeal symbionts. *Mol Ecol* 30:3768–3782. <https://doi.org/10.1111/mec.16006>
15. Pollock FJ, McMinds R, Smith S, Bourne DG, Willis BL, Medina M, Thurber RV, Zaneveld JR. 2018. Coral-associated bacteria demonstrate phylosymbiosis and cophylogeny. *Nat Commun* 9:4921. <https://doi.org/10.1038/s41467-018-07275-x>
16. Groussin M, Mazel F, Sanders JG, Smillie CS, Lavergne S, Thuiller W, Alm EJ. 2017. Unraveling the processes shaping mammalian gut microbiomes over evolutionary time. *Nat Commun* 8:14319. <https://doi.org/10.1038/ncomms14319>
17. Alberdi A, Andersen SB, Limborg MT, Dunn RR, Gilbert MTP. 2022. Disentangling host-microbiota complexity through hologenomics. *Nat Rev Genet* 23:281–297. <https://doi.org/10.1038/s41576-021-00421-0>
18. Neu AT, Allen EE, Roy K. 2021. Defining and quantifying the core microbiome: challenges and prospects. *Proc Natl Acad Sci U S A* 118:e2104429118. <https://doi.org/10.1073/pnas.2104429118>
19. Egerton S, Culloty S, Whooley J, Stanton C, Ross RP. 2018. The gut microbiota of marine fish. *Front Microbiol* 9:873. <https://doi.org/10.3389/fmicb.2018.00873>
20. Risely A. 2020. Applying the core microbiome to understand host-microbe systems. *J Anim Ecol* 89:1549–1558. <https://doi.org/10.1111/1365-2656.13229>
21. Knowles SCL, Eccles RM, Balrúnaitė L. 2019. Species identity dominates over environment in shaping the microbiota of small mammals. *Ecol Lett* 22:826–837. <https://doi.org/10.1111/ele.13240>
22. Minich J, Härer A, Vechinski J, Frable B, Skelton Z, Kunselman E, Shane M, Perry D, Gonzalez A, McDonald D, Knight R, Michael T, Allen E. 2022. Fish microbiomes 101: disentangling the rules governing marine fish mucosal microbiomes across 101 species. *bioRxiv*. <https://doi.org/10.21203/rs.3.rs-1425592/v1>
23. Ward NL, Steven B, Penn K, Methé BA, Detrich WH III. 2009. Characterization of the intestinal microbiota of two Antarctic notothenioid fish species. *Extremophiles* 13:679–685. <https://doi.org/10.1007/s00792-009-0252-4>
24. Urtubia R, Gallardo P, Cárdenas CA, Lavin P, González-Aravena M. 2017. First characterization of gastrointestinal culturable bacteria of Patagonian toothfish *Dissostichus eleginoides* (Nototheniidae). *Rev Biol Mar Oceanogr* 52:399–404. <https://doi.org/10.4067/S0718-19572017000200019>
25. MacCormack WP, Fraile ER. 1991. Bacterial flora of the digestive tract of specimens of *Notothenia neglecta* caught in Caleta Potter (South Shetland Archipelago, Antarctica). *Rev Argent Microbiol* 23:160–165.
26. Sedláček I, Staňková E, Švec P. 2016. Composition of cultivable enteric bacteria from the intestine of Antarctic fish (family Nototheniidae). *Czech J Anim Sci* 61:127–132. <https://doi.org/10.17221/8785-CJAS>
27. Hureau J. 1990. Harpagiferidae. Fishes of the southern ocean JLB, p 357–363. Smith Institute of Ichthyology, Grahamstown.
28. Hureau J, Tomo A. 1976. Variations morphologiques des espèces du genre *Harpagifer* (Teleostei, Nototheniiformes) en fonction de leur distribution géographique. *Rev trav Inst Scient Trav Pêch marit* 40:609–611.
29. Treweek SA, Morgan-Richards M, Collins LJ. 2008. Are you my mother? phylogenetic analysis reveals orphan hybrid stick insect genus is part of a monophyletic New Zealand clade. *Mol Phylogenet Evol* 48:799–808. <https://doi.org/10.1016/j.ympev.2008.05.025>
30. Prirodina V. 2002. Redescription of littoral and deep-sea species of the genus *Harpagifer* (Harpagiferidae, Notothenioidae) off islands of the Indian Ocean sector of the southern ocean with the description of a new species. *J Ichthyol* 42:701–712.
31. Saravia J, Paschke K, Pontigo JP, Nualart D, Navarro JM, Vargas-Chacoff L. 2022. Effects of temperature on the innate immune response on Antarctic and sub-Antarctic fish *Harpagifer antarcticus* and *Harpagifer bispinis* challenged with two immunostimulants, LPS and Poly I: C: *in vivo* and *in vitro* approach. *Fish Shellfish Immunol* 130:391–408. <https://doi.org/10.1016/j.fsi.2022.09.025>
32. Vargas-Chacoff L, Martínez D, Oyarzún-Salazar R, Paschke K, Navarro JM. 2021. The osmotic response capacity of the Antarctic fish *Harpagifer*

- antarcticus* is insufficient to cope with projected temperature and salinity under climate change. *J Therm Biol* 96:102835. <https://doi.org/10.1016/j.jtherbio.2021.102835>
33. Carthey AJR, Blumstein DT, Gallagher RV, Tetu SG, Gillings MR, Bennett A. 2020. Conserving the holobiont. *Funct Ecol* 34:764–776. <https://doi.org/10.1111/1365-2435.13504>
  34. Hüne M, González-Wevar C, Poulin E, Mansilla A, Fernández DA, Barrera-Oro E. 2015. Low level of genetic divergence between *Harpagifer fish* species (Perciformes: Notothenioidei) suggests a Quaternary colonization of Patagonia from the Antarctic Peninsula. *Polar Biol* 38:607–617. <https://doi.org/10.1007/s00300-014-1623-6>
  35. Hüne M, Vega R. 2016. Feeding habits in two sympatric species of Notothenioidei, *Patagonotothen cornucola* and *Harpagifer bispinis*, in the Chilean Patagonian channels and fjords. *Polar Biol* 39:2253–2262. <https://doi.org/10.1007/s00300-016-1892-3>
  36. Casaux R. 1998. The contrasting diet of *Harpagifer antarcticus* (Notothenioidei, Harpagiferidae) at two localities of the South Shetland Islands, Antarctica. *Polar Biology* 19:283–285. <https://doi.org/10.1007/s003000050246>
  37. Ochman H, Elwyn S, Moran NA. 1999. Calibrating bacterial evolution. *Proc Natl Acad Sci U S A* 96:12638–12643. <https://doi.org/10.1073/pnas.96.22.12638>
  38. Chase AB, Martiny JB. 2018. The importance of resolving biogeographic patterns of microbial microdiversity. *Microbiol Aust* 39:5. <https://doi.org/10.1071/MA18003>
  39. Eren AM, Morrison HG, Lescault PJ, Reveillaud J, Vineis JH, Sogin ML. 2015. Minimum entropy decomposition: unsupervised oligotyping for sensitive partitioning of high-throughput marker gene sequences. *ISME J* 9:968–979. <https://doi.org/10.1038/ismej.2014.195>
  40. Klindworth A, Pruesse E, Schweer T, Peplies J, Quast C, Horn M, Glöckner FO. 2013. Evaluation of general 16S ribosomal RNA gene PCR primers for classical and next-generation sequencing-based diversity studies. *Nucleic Acids Res* 41:e1. <https://doi.org/10.1093/nar/gks808>
  41. Schloss PD, Westcott SL, Ryabin T, Hall JR, Hartmann M, Hollister EB, Lesniewski RA, Oakley BB, Parks DH, Robinson CJ, Sahl JW, Stres B, Thallinger GG, Van Horn DJ, Weber CF. 2009. Introducing mothur: open-source, platform-independent, community-supported software for describing and comparing microbial communities. *Appl Environ Microbiol* 75:7537–7541. <https://doi.org/10.1128/AEM.01541-09>
  42. Schwob G, Cabrol L, Poulin E, Orlando J. 2020. Characterization of the gut microbiota of the Antarctic heart urchin (Spatangoida) *Abatus agassizii* *Front Microbiol* 11:308. <https://doi.org/10.3389/fmicb.2020.00308>
  43. Folmer O, Black M, Hoeh W, Lutz R, Vrijenhoek R. 1994. DNA primers for amplification of mitochondrial cytochrome c oxidase subunit I from diverse metazoan invertebrates. *Mol Mar Biol Biotechnol* 3:294–299.
  44. Ward RD, Zemlak TS, Innes BH, Last PR, Hebert PDN. 2005. DNA barcoding Australia's fish species. *Philos Trans R Soc Lond B Biol Sci* 360:1847–1857. <https://doi.org/10.1098/rstb.2005.1716>
  45. Filatov DA. 2009. Processing and population genetic analysis of multigenic datasets with ProSeq3 software. *Bioinformatics* 25:3189–3190. <https://doi.org/10.1093/bioinformatics/btp572>
  46. Leigh JW, Bryant D. 2015. POPART: full-feature software for haplotype network construction. *Methods Ecol Evol* 6:1110–1116. <https://doi.org/10.1111/2041-210X.12410>
  47. Lemoine F, Correia D, Lefort V, Doppelt-Azeroual O, Mareuil F, Cohen-Boulakia S, Gascuel O. 2019. NGPhylogeny. fr: new generation phylogenetic services for non-specialists. *Nucleic Acids Res* 47:W260–W265. <https://doi.org/10.1093/nar/gkz303>
  48. Swofford D, Olsen GJ, Waddell PJ, Hillis DM. 1996. Phylogenetic inference, p 407–514. In *Molecular systematics massachusetts*. Sinauer Associates.
  49. Assis J, Tyberghein L, Bosch S, Verbruggen H, Serrão EA, De Clerck O. 2018. Bio - ORACLE v2.0: extending marine data layers for bioclimatic modelling. *Global Ecol Biogeogr* 27:277–284. <https://doi.org/10.1111/geb.12693>
  50. Vavrek MJ. 2011. *fossil*: palaeoecological and palaeogeographical analysis tools. *Palaeontologia Electronica* 14:16.
  51. Oksanen J, Blanchet FG, Kindt R, Legendre P. 2011. *Vegan*: community ecology package, 2011. R package version 1:17–18.
  52. Wang JJ. 2013. Examining the full effects of landscape heterogeneity on spatial genetic variation: a multiple matrix regression approach for quantifying geographic and ecological isolation. *Evolution* 67:3403–3411. <https://doi.org/10.1111/evo.12134>
  53. Sloan WT, Lunn M, Woodcock S, Head IM, Nee S, Curtis TP. 2006. Quantifying the roles of immigration and chance in shaping prokaryote community structure. *Environ Microbiol* 8:732–740. <https://doi.org/10.1111/j.1462-2920.2005.00956.x>
  54. Burns AR, Stephens WZ, Stagaman K, Wong S, Rawls JF, Guillemin K, Bohannan BJ. 2016. Contribution of neutral processes to the assembly of gut microbial communities in the zebrafish over host development. *ISME J* 10:655–664. <https://doi.org/10.1038/ismej.2015.142>
  55. Revell LJ. 2012. Phytools: an R package for phylogenetic comparative biology (and other things). *Methods Ecol Evol* 3:217–223. <https://doi.org/10.1111/j.2041-210X.2011.00169.x>
  56. Balbuena JA, Míguez-Lozano R, Blasco-Costa I. 2013. PACo: a novel procrustes application to cophylogenetic analysis. *PLoS One* 8:e61048. <https://doi.org/10.1371/journal.pone.0061048>
  57. Hutchinson MC, Cagua EF, Balbuena JA, Stouffer DB, Poisot T. 2017. paco: implementing procrustean approach to cophylogeny in R. *Methods Ecol Evol* 8:932–940. <https://doi.org/10.1111/2041-210X.12736>
  58. Baiz MD. 2022. Host phylogeny, but not diet diversity, influences gut microbiome composition in breeding wood-warblers. *bioRxiv*. <https://doi.org/10.1101/2022.03.07.482310>
  59. Restivo VE, Kidd KA, Surette MG, Servos MR, Wilson JY. 2021. Rainbow darter (*Etheostoma caeruleum*) from a river impacted by municipal wastewater effluents have altered gut content microbiomes. *Sci Total Environ* 751:141724. <https://doi.org/10.1016/j.scitotenv.2020.141724>
  60. Grond K, Bell KC, Demboski JR, Santos M, Sullivan JM, Hird SM. 2020. No evidence for phyllosymbiosis in western chipmunk species. *FEMS Microbiol Ecol* 96. <https://doi.org/10.1093/femsec/fiz182>
  61. Hird SM. 2017. Evolutionary biology needs wild microbiomes. *Front Microbiol* 8:725. <https://doi.org/10.3389/fmicb.2017.00725>
  62. Givens CE, Ransom B, Bano N, Hollibaugh JT. 2015. Comparison of the gut microbiomes of 12 bony fish and 3 shark species. *Mar Ecol Prog Ser* 518:209–223. <https://doi.org/10.3354/meps11034>
  63. Sadeghi J, Chaganti SR, Johnson TB, Heath DD. 2023. Host species and habitat shape fish-associated bacterial communities: phyllosymbiosis between fish and their microbiome. *Microbiome* 11:258. <https://doi.org/10.1186/s40168-023-01697-6>
  64. Lim SJ, Bordenstein SR. 2020. An introduction to phyllosymbiosis. *Proc Biol Sci* 287:20192900. <https://doi.org/10.1098/rspb.2019.2900>
  65. Miyake S, Ngugi DK, Stingl U. 2015. Diet strongly influences the gut microbiota of surgeonfishes. *Mol Ecol* 24:656–672. <https://doi.org/10.1111/mec.13050>
  66. Gao YM, Zou KS, Zhou L, Huang XD, Li YY, Gao XY, Chen X, Zhang XY. 2020. Deep insights into gut microbiota in four carnivorous coral reef fishes from the South China sea. *Microorganisms* 8:426. <https://doi.org/10.3390/microorganisms8030426>
  67. Le D, Nguyen P, Nguyen D, Dierckens K, Boon N, Lacoere T, Kerckhof F-M, De Vrieze J, Vadstein O, Bossier P. 2020. Gut microbiota of migrating wild rabbit fish (*Siganus guttatus*) larvae have low spatial and temporal variability. *Microb Ecol* 79:539–551. <https://doi.org/10.1007/s00248-019-01436-1>
  68. Huang Q, Sham RC, Deng Y, Mao Y, Wang C, Zhang T, Leung KMY. 2020. Diversity of gut microbiomes in marine fishes is shaped by host-related factors. *Mol Ecol* 29:5019–5034. <https://doi.org/10.1111/mec.15699>
  69. Miyake S, Ngugi DK, Stingl U. 2016. Phylogenetic diversity, distribution, and cophylogeny of giant bacteria (*Epulopiscium*) with their surgeonfish hosts in the Red Sea. *Front Microbiol* 7:285. <https://doi.org/10.3389/fmicb.2016.00285>
  70. Baldo L, Riera JL, Salzburger W, Barluenga M. 2019. Phylogeography and ecological niche shape the cichlid fish gut microbiota in central American and African lakes. *Front Microbiol* 10:2372. <https://doi.org/10.3389/fmicb.2019.02372>
  71. Wang AR, Ran C, Ringø E, Zhou ZG. 2018. Progress in fish gastrointestinal microbiota research. *Reviews in Aquaculture* 10:626–640. <https://doi.org/10.1111/raq.12191>
  72. Llewellyn MS, McGinnity P, Dionne M, Letourneau J, Thonier F, Carvalho GR, Creer S, Derome N. 2016. The biogeography of the atlantic salmon

- (*Salmo salar*) gut microbiome. ISME J 10:1280–1284. <https://doi.org/10.1038/ismej.2015.189>
73. Rosado D, Xavier R, Cable J, Severino R, Tarroso P, Pérez-Losada M. 2021. Longitudinal sampling of external mucosae in farmed European seabass reveals the impact of water temperature on bacterial dynamics. ISME Commun 1:28. <https://doi.org/10.1038/s43705-021-00019-x>
  74. Karlsen C, Ottem KF, Brevik ØJ, Davey M, Sørum H, Winther-Larsen HC. 2017. The environmental and host - associated bacterial microbiota of Arctic seawater - farmed Atlantic salmon with ulcerative disorders. J Fish Dis 40:1645–1663. <https://doi.org/10.1111/jfd.12632>
  75. Khider M, Hjerde E, Hansen H, Willassen NP. 2019. Differential expression profiling of  $\Delta litR$  and  $\Delta rpoQ$  mutants reveals insight into QS regulation of motility, adhesion and biofilm formation in *Aliivibrio salmonicida*. BMC Genomics 20:220. <https://doi.org/10.1186/s12864-019-5594-4>
  76. Hansen H, Bjelland AM, Ronessen M, Robertsen E, Willassen NP. 2014. LitR is a repressor of *syp* genes and has a temperature-sensitive regulatory effect on biofilm formation and colony morphology in *Vibrio (Aliivibrio) salmonicida*. Appl Environ Microbiol 80:5530–5541. <https://doi.org/10.1128/AEM.01239-14>
  77. Skåne A, Minniti G, Loose JSM, Mekasha S, Bissaro B, Mathiesen G, Arntzen MØ, Vaaje-Kolstad G. 2021. The fish pathogen *Aliivibrio salmonicida* LF11238 can degrade and metabolize chitin despite gene disruption in the chitinolytic pathway. Appl Environ Microbiol 87:e0052921. <https://doi.org/10.1128/AEM.00529-21>
  78. Keyhani NO, Roseman S. 1999. Physiological aspects of chitin catabolism in marine bacteria. Biochim Biophys Acta 1473:108–122. [https://doi.org/10.1016/s0304-4165\(99\)00172-5](https://doi.org/10.1016/s0304-4165(99)00172-5)
  79. Kirchner M. 1995. Microbial colonization of copepod body surfaces and chitin degradation in the sea. Helgolander Meeresunters 49:201–212. <https://doi.org/10.1007/BF02368350>
  80. Wang Y, Chang Y, Yu L, Zhang C, Xu X, Xue Y, Li Z, Xue C. 2013. Crystalline structure and thermal property characterization of chitin from Antarctic krill (*Euphausia superba*). Carbohydr Polym 92:90–97. <https://doi.org/10.1016/j.carbpol.2012.09.084>
  81. Gerdts G, Brandt P, Kreisel K, Boersma M, Schoo KL, Wichels A. 2013. The microbiome of North Sea copepods. Helgol Mar Res 67:757–773. <https://doi.org/10.1007/s10152-013-0361-4>
  82. Hammer TJ, Sanders JG, Fierer N. 2019. Not all animals need a microbiome. FEMS Microbiol Lett 366:fnz117. <https://doi.org/10.1093/femsle/fnz117>
  83. Erken M, Lutz C, McDougald D. 2015. Interactions of *Vibrio* spp. with zooplankton. Microbiol Spectr 3:02. <https://doi.org/10.1128/microbiol-spec.VE-0003-2014>
  84. Charleston MA, Robertson DL. 2002. Preferential host switching by primate lentiviruses can account for phylogenetic similarity with the primate phylogeny. Syst Biol 51:528–535. <https://doi.org/10.1080/10635150290069940>
  85. Cabrol L, Delleuze M, Szyllit A, Schwob G, Québécois M, Misson B. 2023. Assessing the diversity of plankton-associated prokaryotes along a size-fraction gradient: a methodological evaluation. Marine Pollution Bulletin 197:115688. <https://doi.org/10.1016/j.marpolbul.2023.115688>
  86. Schwob G, Segovia NI, González-Wevar C, Cabrol L, Orlando J, Poulin E. 2021. Exploring the microdiversity within marine bacterial taxa: toward an integrated biogeography in the Southern ocean. Front Microbiol 12:703792. <https://doi.org/10.3389/fmicb.2021.703792>
  87. Fraser CI, Morrison A, Rojas PO. 2020. Biogeographic processes influencing Antarctic and sub-Antarctic seaweeds, p 43–57. In Antarctic seaweeds. Springer.
  88. He S, Robitzsch V, Hobbs J-P, Travers MJ, Lozano-Cortés D, Berumen ML, DiBattista JD. 2019. An examination of introgression and incomplete lineage sorting among three closely related species of chocolate-dipped damselfish (genus: *Chromis*). Ecol Evol 9:5468–5478. <https://doi.org/10.1002/ece3.5142>