



HAL
open science

Assessment of light-absorbing carbonaceous aerosol origins and properties at the ATOLL site in Northern France

Alejandra Velazquez-Garcia, Joel de Brito, Suzanne Crumeyrolle, Isabelle Chiapello, Véronique Riffault

► To cite this version:

Alejandra Velazquez-Garcia, Joel de Brito, Suzanne Crumeyrolle, Isabelle Chiapello, Véronique Riffault. Assessment of light-absorbing carbonaceous aerosol origins and properties at the ATOLL site in Northern France. *Aerosol Research*, 2024, 2 (1), pp.107-122. 10.5194/ar-2024-5 . hal-04550567v2

HAL Id: hal-04550567

<https://hal.science/hal-04550567v2>

Submitted on 28 May 2024

HAL is a multi-disciplinary open access archive for the deposit and dissemination of scientific research documents, whether they are published or not. The documents may come from teaching and research institutions in France or abroad, or from public or private research centers.

L'archive ouverte pluridisciplinaire **HAL**, est destinée au dépôt et à la diffusion de documents scientifiques de niveau recherche, publiés ou non, émanant des établissements d'enseignement et de recherche français ou étrangers, des laboratoires publics ou privés.



Distributed under a Creative Commons Attribution 4.0 International License



Assessment of light-absorbing carbonaceous aerosol origins and properties at the ATOLL site in northern France

Alejandra Velazquez-Garcia^{1,2}, Joel F. de Brito¹, Suzanne Crumeyrolle², Isabelle Chiapello², and Véronique Riffault¹

¹Centre for Energy and Environment, IMT Nord Europe, Institut Mines-Télécom, Université de Lille, Lille, 59000, France

²LOA – Laboratoire d’Optique Atmosphérique, CNRS, UMR 8518, Univ. Lille, Lille, 59000, France

Correspondence: Alejandra Velazquez-Garcia (ale-vg13@hotmail.com) and Joel F. de Brito (joel.brito@imt-nord-europe.fr)

Received: 7 February 2024 – Discussion started: 12 February 2024

Revised: 4 April 2024 – Accepted: 5 April 2024 – Published: 28 May 2024

Abstract. Understanding the lifecycle of light-absorbing carbonaceous aerosols, from emission to deposition, is critical for assessing their climate impact. This study integrated multi-year aerosol observations from the ATOLL (ATmospheric Observations in LiLLe, northern France) platform, with air mass back trajectories and emission inventory as a newly developed “INTERPLAY” (IN-siTU obsERvations, hysPLit, And emission invenTory) approach. Applied to black carbon (BC), the method apportioned source contributions (shipping, vehicular, residential heating, industrial) and studied aerosol aging effects, notably on the brown carbon (BrC) component. Results estimate that, throughout the year, vehicular traffic dominated BC (31 %), followed by shipping (25 %, of which one-third was from canals/rivers) and residential heating (21 %). Comparing INTERPLAY results with the aethalometer model highlights that the “residential sector” BC can be entirely apportioned to BC from wood burning (BC_{wb}), notably in winter, while vehicular traffic corresponds to only about 41 % of BC fossil fuel (BC_{ff}) at the ATOLL site, the rest being apportioned to shipping (33 %) and industrial (23 %) emissions. Thus, vehicular traffic and BC_{ff} should not be used interchangeably, particularly in regions near intense maritime traffic. Concerning BrC, our analysis confirms a dominant role of residential heating. Focusing on winter, results suggest a considerable decrease in the BrC component only 24 h after emission, with fresh residential emissions being responsible for 72 % of BrC absorption at ATOLL. The results from this study allow for an improved understanding of sources and atmospheric dynamics of light-absorbing carbonaceous aerosols in northern France, being crucial for both source abatement strategies as well as a better assessment of their climate impact.

1 Introduction

Light-absorbing carbonaceous (LAC) particles are an important component of the climate system due to their effect on solar radiation (aerosol–radiation interactions, ARIs) and the associated impact on cloud properties (aerosol–cloud interactions, ACIs) (Forster et al., 2021). In addition, deposited LAC particles efficiently reduce snow/ice albedo, increasing heating and accelerating melting (Pu et al., 2017; Wang et al., 2017; Liu et al., 2020). LAC particles are mainly com-

posed of organic and inorganic components, namely brown and black carbon (BrC and BC, respectively). Whereas BC absorbs over a broad spectral range from UV to infrared and is widely recognized as an important climatic driver, BrC absorbs mostly in the UV and its impacts suffer from large uncertainties due to the complex variety of molecules or molecular aggregates dictating its optical properties and how atmospheric processing forms or destroys those compounds (Laskin et al., 2015; Moise et al., 2015).

To date, numerous LAC sources have been identified. While BC primarily originates from combustion processes, BrC can form in the atmosphere via secondary reactions. Once present in the atmosphere, the characteristics of LAC can evolve due to changes in their chemical composition, as well as their physical properties, including size distribution, phase state, viscosity, etc. (Laskin et al., 2015; Moise et al., 2015). BC typically exhibits an atmospheric lifetime of 7 to 10 d, aging rapidly within a few hours over polluted regions such as urban and biomass-burning impacted areas (Denjean et al., 2020; Kumar et al., 2018; Saturno et al., 2018; Sun et al., 2021). In contrast, its aging timescale can extend to days or even weeks in remote areas. Conversely, BrC, as a component of organic aerosol (OA), is highly prone to atmospheric processing such as oligomerization, functionalization, or fragmentation. Sources of BrC encompass both anthropogenic, such as the combustion of fossil fuels and biomass, and biogenic sources arising from the oxidation products of vegetation-emitted terpenes/isoprene, as well as primary biological aerosol particles from plants and fungi, among others (He et al., 2021; Kanakidou et al., 2005; Ng et al., 2017). Biomass burning (BB), including forest fires and the burning of crop residues, is considered to be the main source of primary BrC (Teich et al., 2017; Lin et al., 2017). Corbin et al. (2019) found that BrC, as highly absorbing tar balls, may dominate the total aerosol light absorption of ship emissions in the open ocean and the Arctic, due to heavy-fuel oil. At the global scale, shipping emissions represent only a minor contribution to LAC mass (Bond et al., 2013). However, they tend to occur in remote regions otherwise quite pristine and climatically sensitive (Ødemark et al., 2012). Production of secondary BrC has been shown to occur within or between the gas phase, particle phase, and cloud droplets (Laskin et al., 2015). Various mechanisms contribute to its formation, including the nitrification of aromatic compounds (Lu et al., 2011; Harrison et al., 2005), the acid-catalyzed condensation of hydroxyl aldehyde followed by oligomerization (Haan et al., 2009; Shapiro et al., 2009), and the reaction of ammonia (NH₃) or amino acids with carbonyls (De Haan et al., 2011; Nguyen et al., 2013; Flores et al., 2014). Those processes can either enhance or decrease the light-absorbing capabilities of the OA, generally termed bleaching (Laskin et al., 2015). Specifically, BrC can be photolyzed and degraded into a less absorbing compound when directly exposed to solar radiation (photo-bleaching). Accurately representing this process can prove challenging, due to variations in the photolysis rates of chromophores, the absorbing components of the molecules (Chen et al., 2021; Hems et al., 2021; Liu et al., 2021, 2016). Only a few modeling studies tried to include the BC and BrC lifetimes to estimate their climate impacts (Saleh, 2020).

Therefore, a better assessment of real-world LAC properties according to their sources and age is fundamentally relevant to improving our understanding of the overall impact of aerosol particles on climate. In this work, we employ an

innovative analysis approach combining multiannual submicron aerosol (PM₁) observations, air mass back trajectories (BTs), and emission inventories to examine how different sources and geographical origins affect the optical properties of carbonaceous aerosols at an observation site. The study is centered at the ATOLL (ATmospheric Observations in liLLe) suburban site in northern France. The region is a densely populated pollution hotspot in Europe, with a significant fraction of secondary aerosols (Chebaicheb et al., 2023; Chen et al., 2022; Roig Rodelas et al., 2019; Zhang et al., 2021), and is strongly impacted by LAC particles, having a major role in aerosol light extinction at the ATOLL site (Savadkoobi et al., 2023; Velazquez-Garcia et al., 2023).

2 Materials and methods

2.1 Sampling site

Real-time in situ aerosol measurements have been performed routinely since October 2016 on the ATOLL platform, located on the rooftop of a University of Lille building (50.6111° N, 3.1404° E, 70 m a.s.l.), 6 km southeast of Lille downtown area. The ATOLL site is part of the French ACTRIS (Aerosols, Clouds, and Traces Gases Research Infrastructure) National Facilities for both in situ and remote sensing measurements, as well as the CARA program (Favez et al., 2021) concerning the chemical composition of aerosols, both aiming at continuous, long-term, and high-quality atmospheric data. BC concentrations and absorption coefficients (σ_{abs}) are continually measured with a 1 min time resolution using a seven-wavelength (370, 420, 525, 590, 660, 880, 950 nm) aethalometer (AE33, Magee Scientific Inc., Drinovce et al., 2015; Cuesta-Mosquera et al., 2021). Following ACTRIS current guidelines (ACTRIS: <https://actris-ecac.eu/particle-light-absorption.html>, last access: 7 August 2023), σ_{abs} coefficients at each wavelength have been recalculated by multiplying BC by the mass-specific absorption coefficient (MAC) then dividing by the suitable harmonization factor to account for the filter multiple scattering effects: 2.21 (M8020 filter tape) in 2017 and 1.76 (M8060 filter tape) for 2018 and 2019. The aethalometer is sampling at 5 L min⁻¹ downstream a PM₁ cyclone (BGI SCC1.197, Mesa Labs) with a stainless-steel line (3.5 m) and flexible tubing (0.50 m) designed to limit the aerosol electrostatic losses. It is noteworthy that whereas absorption measurements in the PM₁ fraction are less prone to be affected by artifacts at higher sizes as typically deployed (PM_{2.5} or PM₁₀), they can suffer from BC underestimation, potentially missing aged, internally mixed BC-containing aerosols. Depending on focus and statistics, subsequent analyses have been split between warm (May–August) and cold seasons (September–April) or restricted to summer (June–August) and winter (December–February).

2.2 Aerosol optical properties

The absorption Ångström exponent (AAE) parameter is derived from σ_{abs} and describes the wavelength (λ) dependence of aerosol light absorption, also employed in aerosol characterization and apportionment studies (Liu et al., 2018). Here we approximate the AAE (for each data point) between two wavelengths ($\lambda_1 = 370$ nm and $\lambda_2 = 880$ nm) by

$$\text{AAE} \left(\frac{\sigma_{\text{abs}, \lambda_1}}{\sigma_{\text{abs}, \lambda_2}} \right) = - \frac{\log \log \left(\frac{\sigma_{\text{abs}, \lambda_1}}{\sigma_{\text{abs}, \lambda_2}} \right)}{\log \left(\frac{\lambda_1}{\lambda_2} \right)} = - \frac{\log \log (\sigma_{\text{abs}, \lambda_1}) - \log (\sigma_{\text{abs}, \lambda_2})}{\log \log (\lambda_1) - \log (\lambda_2)}. \quad (1)$$

The spectral dependence of BC absorption ($\sigma_{\text{BC abs}}$) can be derived based on the measured total aerosol absorption coefficients (σ_{abs}) using Eq. (1) assuming that BC is the only species responsible for light absorption at 880 nm. The AAE for BC usually ranges between 0.9 and 1.2 (Bond et al., 2013; Lu et al., 2015); thus we applied an AAE of 1 in our analysis. In addition, BrC absorption coefficients ($\sigma_{\text{BrC abs}}$) were calculated at each wavelength using Eq. (2), and BrC wavelength dependence was then estimated.

$$\sigma_{\text{BrC abs}, \lambda} = \sigma_{\text{abs}, \lambda} - \sigma_{\text{BC abs}, \lambda} \quad (2)$$

It is noteworthy that the assumptions on the AAE of pure BC (AAE_{BC}) to retrieve BrC absorption can impact its estimates. For instance, X. Zhang et al. (2020) applied a sensitivity test using three different values (0.9, 1, and 1.1) for AAE_{BC} , and reporting an uncertainty of 11 %. Other strategies, as used by de Sá et al. (2019), for example, are based on the assumption that AAE_{BC} varies over time and can be estimated from σ_{abs} slopes in the vicinity of 880 nm. Furthermore, we used the “Aethalometer model” approach (Sandradewi et al., 2008) for the estimation of the BC coming from fossil fuel (BC_{ff}) and from wood-burning (BC_{wb}) sources. The equations relating the wavelengths (i.e., 370 and 880 nm) and the absorption coefficient for the fossil fuel and wood burning are

$$\frac{\sigma_{\text{abs}, \text{ff}}(\lambda_1)}{\sigma_{\text{abs}, \text{ff}}(\lambda_2)} = \frac{\lambda_1^{-\text{AAE}_{\text{ff}}}}{\lambda_2} \quad (3)$$

$$\frac{\sigma_{\text{abs}, \text{wb}}(\lambda_1)}{\sigma_{\text{abs}, \text{wb}}(\lambda_2)} = \frac{\lambda_1^{-\text{AAE}_{\text{wb}}}}{\lambda_2} \quad (4)$$

As indicated in Eqs. (3) and (4), the estimates are also dependent on assumptions of AAE_{ff} and AAE_{wb} , with typically used values of 1 and 2, respectively. Nonetheless, different values have also been proposed in the literature, based for example on elemental carbon ^{14}C analysis (e.g., Savadkoohi et al., 2023, and references therein). Due to the unavailability of ^{14}C analysis at the ATOLL site, and for consistency with previous studies at the site, we assumed values typically used in the literature (i.e., $\text{AAE}_{\text{BC}} = 1$, $\text{AAE}_{\text{ff}} = 1$, and $\text{AAE}_{\text{wb}} = 2$).

2.3 Individual back trajectory analysis

The 72 h back trajectories (BTs) used here were calculated for the 2016–2019 period with the NOAA Hybrid Single-Particle Lagrangian Integrated Trajectory (HYSPPLIT) model (Stein et al., 2015). An arrival height of half the planetary boundary layer (PBL) was used at 1 h intervals (24 trajectories per day) using the $1^\circ \times 1^\circ$ resolution Global Data Assimilations System (GDAS) meteorological files.

2.4 Emission inventory

The emission inventory was supplied by the Emissions Database for Global Atmospheric Research (EDGAR) developed by the Joint Research Center (JRC). EDGAR provides independent estimates of global anthropogenic emissions and emission trends, based on publicly available statistics (Crippa et al., 2020). The emission inventory is characterized by a world-historical trend from 1970–2018, including emissions of all greenhouse gases, air pollutants, and aerosols. Data are presented for all countries, with emissions provided per main source category, and gridded on a spatial resolution of $0.1^\circ \times 0.1^\circ$. The version employed in this work (v. 6.1) is time-dependent, with temporal profiles developed for each country/region and sector-specific. Here, we chose to use monthly sector-specific grid maps for BC emissions (in $\text{kg BC m}^{-2} \text{ s}^{-1}$, Fig. S1 in the Supplement). Different sectors described in the inventory were grouped here for simplicity: “traffic” comprises tail-pipe and resuspension emissions; “residential” consists of heat generation either by biomass or liquid fuel; “power industry” incorporates electricity generation, heat, and power generation; “industry–manufacturing” contains industrial activities, as well as embedded electricity and heat generation, oil refineries, and transformation; finally, “shipping” includes oceanic and inland, such as rivers and canals, transportation.

2.5 INTERPLAY approach

The INTERPLAY (IN-siTU obsERvations, hysPLit, And emission inventorY) approach derives from the so-called footprint analysis (e.g., Pöhlker et al., 2019), which combines BTs and land information to explore air mass history and better interpret the atmospheric composition and its properties. The main advantage consists of the use of computationally inexpensive Lagrangian modeling, being able to gain important insights from large datasets, such as multi-annual observations. INTERPLAY consists of using emission inventory information to integrate the source strength of a given species along individual BTs to quantify the relative contributions to the receptor site (including information such as distance and traveled time). Here, INTERPLAY has been applied to BC, given that it is expected to be relatively stable in the atmosphere within the time frame of BT considered here (72 h).

The INTERPLAY method is a multi-step process that first consists of interpolating each hourly HYSPLIT trajectory

(comprising 72 points corresponding to 72 h) into a more finely resolved spatial BT. In this refined BT, each interval between two consecutive points corresponds to 10 min, resulting in a total of 72×6 points. For points located more than 40 km away from the receptor site, the EDGAR emissions are integrated over a square area of $0.5^\circ \times 0.5^\circ$, centered on the BT location. For smaller distances (< 40 km), INTERPLAY integrates only the emissions within the air mass arrival sector. This sector is defined as a quarter-circle area with a line of symmetry towards the incoming direction (Fig. S2). This criterion is established to more accurately represent emissions in the vicinity of the site, excluding contributions from locations such as Lille, located in the NW direction from ATOLL when air masses approach from the SE, and vice versa. To reduce the bias of aerosol removal by precipitation (wash-out), only BTs with less than 1 mm of integrated rain over the 72 h period are considered, resulting in the exclusion of about 41 % of the BTs. Despite its simplistic approach, which does not consider factors such as dilution, dry deposition, and potential inaccuracies in both BT and emission inventories, the method demonstrates a fairly good correlation with hourly averaged in situ BC data (Pearson coefficient $R = 0.41$). To minimize the effect of sporadic local sources on our analysis, INTERPLAY results were aggregated into 12 h data points, and the median of each INTERPLAY output (e.g., the relative contribution of BC sources, distances, and ages) was then calculated. These values were compared with the fifth percentiles of 12 h data from in situ BC mass concentrations, i.e., the BC baseline. With this approach, the correlation between INTERPLAY and in situ BC observations was further improved, yielding a Pearson coefficient R of 0.60 (Fig. S3). For context, the 1-year (2018) daily averages of BC at ATOLL exhibited a Pearson coefficient of 0.81 when compared with a computationally expensive, 3D mesoscale atmospheric model (Chebaicheb et al., 2024). Conversely, a comparison of in situ BC observations with FLEXPART product (FLEXPART product: <https://flexpart-request.nilu.no/data-access>, last access: 30 November 2023) using ECLIPSEv6 (Klimont et al., 2017) and GFEDv4 (Giglio et al., 2013) emission inventories yielded a Pearson coefficient R of 0.52.

The INTERPLAY method has been used to link a specific in situ optical property with a BC source or region. This association requires a minimum contribution of 20 % of the total integrated BC (e.g., traffic) for individual BTs. Statistical robustness is ensured by focusing exclusively on sources and regions represented by at least 70 BTs. This threshold has been identified via sensitivity tests described in the Supplement (Table S1). The development of INTERPLAY has been carried out using MATLAB 2020a, and country apportionment was facilitated by the climate data toolbox (Greene et al., 2019). Further details for each step of the analysis are provided in Table 1 and in the Supplement.

2.6 Estimation of BrC atmospheric lifetime

The analysis of BrC lifetime is performed using multiple linear regression (MLR), with in situ absorption coefficients for BrC (σ_{BrC}) being the explained variable, and the LAC contributions from the traffic and residential sectors (obtained from INTERPLAY), as dependent variables. Furthermore, to study the atmospheric dynamics of BrC, INTERPLAY enables the separation of BC components based on the time since emissions, distinguishing between “fresh” emissions (occurring less than 24 h before reaching the site) and “aged” ones (more than 24 h old). The focus on traffic and residential emissions is motivated by several factors: (i) they have a well-established associated BrC component (typically part of the “Aethalometer model”), with BrC linked to wood combustion for residential heating; (ii) a reduced number of dependent variables has shown higher robustness on the MLR analysis; (iii) it is generally accepted that traffic and residential heating are the main sources of BC in central Europe (e.g., Savadkoobi et al., 2023). Various tests were conducted using different times since emission (6, 12, 24, and 36 h). The separation into two categories (below and above 24 h) proved to be robust and aligns with literature findings, reporting a typical BrC lifetime of approximately 1 d (Forrister et al., 2015; Wang et al., 2016; Wong et al., 2019; Saleh, 2020). Detailed test results are presented in the Supplement (Figs. S10 and S11). Calculations were performed using the least square method, with coefficients constrained to be positive, and the linear intercept set to zero to explain the absorption measured by in situ observations. The MLR analysis focused on the 12 h averaged integrated BrC mass observed during the cold period (715 data points) and yielded a Pearson coefficient of $R = 0.80$ between observed and modeled BrC.

3 Results and discussion

3.1 Wind direction and BC temporal variability

Figure 1 shows the wind roses and the contour plots of average concentrations of BC_{ff} and BC_{wb} across different wind sectors and hours of the day during the warm (May–August) and cold seasons (September–April), corresponding to potentially high usage of wood combustion for residential heating. During the cold period, the highest wind frequency comes from the southwest sector, with a median wind speed of 1.5 m s^{-1} . During the warm period, although the southwest sector remains dominant, with wind velocities comparable to the cold season, there are additional winds from the north and northeast sectors with moderate speeds ($2\text{--}4 \text{ m s}^{-1}$).

Across the multi-annual dataset, the average concentrations for BC_{ff} and BC_{wb} are 0.75 and $0.27 \mu\text{g m}^{-3}$, respectively. Those values are within other European cities, with BC (i.e., the sum of BC_{ff} and BC_{wb}) ranging from 0.7 to

Table 1. Statistics of observations and INTERPLAY at the ATOLL site from 10 December 2016 till 31 December 2019.

Method	Parameter used	Raw Time resolution	Raw data	12 h baseline	Cold period (12 h)	Warm period (12 h)
Aerosol in situ properties	Aethalometer	σ_{abs} & BC	1 min	1 226 414	1581	715
Back trajectory	HYSPLIT v. 2020	BT	1 h	11 607 864		
Emission Inventory	EDGAR v. 2018	BC sector-specific grid maps	1 month	6 480 000		n/a*
INTERPLAY approach	Integrated BC	1 h	6 144 703	675 913	309 595	293 141

* n/a: not applicable. The 12 h baseline applies only for in situ observations and BC footprint from INTERPLAY for comparison.

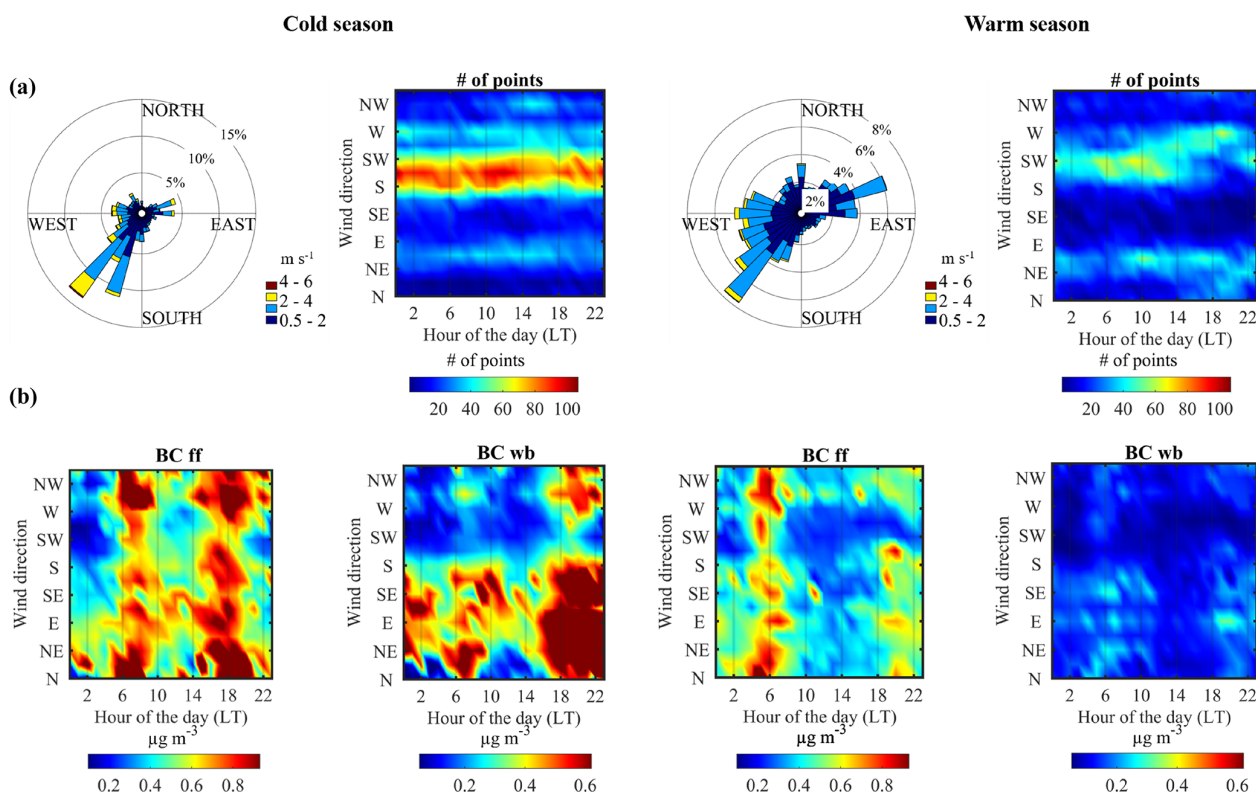


Figure 1. Wind analysis and BC_{ff} and BC_{wb} levels at the ATOLL site during the cold (left, September–April) and warm (right, May–August) seasons. **(a)** Wind roses and wind frequency by the hour of the day (minimum wind speed of 0.5 m s⁻¹). **(b)** Contour plots of BC component loadings according to the wind sector and hour of the day. The color scale minimum and maximum values in **(b)** correspond to the 5th and 75th percentiles for each season, respectively.

1.7 μg m⁻³, generally following an increasing trend from north to south (Savadkoohi et al., 2023). Daily concentration analysis shows BC_{ff} peaking (> 0.8 μg m⁻³) during morning rush hours in both cold and warm periods across all wind sectors, highlighting the impact of local emissions, overlaid on a background BC_{ff} of about 0.2–0.5 μg m⁻³ throughout the day. In contrast, the evening peak is less pronounced during the warm period, likely due to a higher boundary layer height, enhanced dispersion associated with warmer temper-

atures, lower emissions from residential heating in the afternoon, and a less distinct evening peak attributed to summer holidays (July–August in France). BC_{wb} exhibits higher concentrations over the eastern sector, associated with continental air masses loaded with wood combustion. As expected, BC_{wb} levels are significantly higher in the cold season than in the warm season, reflecting widespread wood combustion for heating (Favez et al., 2021). Notably, despite the proximity of ATOLL to Lille (~ 4 km), the wind direction from the

city (NW) does not show particularly high BC_{ff} or BC_{wb} levels, indicating a more regional contribution from the densely populated area and long-range transport (LRT) leading to a consistently high background level. Figure S4 shows HYSPLIT backward trajectory ensembles for the studied period using air mass residence time maps, emphasizing the influence of large-scale trade wind circulation at the ATOLL platform. Similarly, consistent with a recent 4-year study at the ATOLL site (Chebaicheb et al., 2023), the highest concentrations of most OA species occur when ATOLL is not influenced by the Lille city center. This study identified that OA was mainly composed of aged, oxidized compounds (74 %), with only a small fraction related to fresh traffic and wood combustion (11 % and 14 %, respectively). Furthermore, during winter, residential heating (combining fresh and aged components) accounts for about 50 % of the OA. This corroborates that ATOLL is not dominated by local emissions but rather by regional and LRT. Another analysis combining offline organic tracer analysis and online instrumentation (X. Zhang et al., 2020) demonstrated a strong correlation between BrC absorption at 370 nm and levoglucosan (a molecular tracer of cellulose pyrolysis) across nine air quality monitoring networks in France during winter, suggesting a substantial contribution of wood-burning emissions to ambient BrC aerosol. Specifically, at a suburban site in Paris, the main BrC contributors were found to be both biomass-burning OA factors. In a recent analysis, Velazquez-Garcia et al. (2023) underlined the significant role of LAC at the ATOLL site, estimating that organics are responsible for 22 % of absorption in the UV range, while BC and OA contribute to 50 % of the extinction in the visible range (525 nm). The strong contribution of LAC and BrC at ATOLL makes the site suitable for an in-depth study of their sources and dynamics, as presented in the following sections.

3.2 Contributions of sectorial sources and geographical origins to BC at ATOLL

Figure 2a and b depict the spatial apportionment of BC reaching the ATOLL platform, presenting source strengths multiplied by back trajectory frequency at a given grid point (Fig. 2a) and contributions by country/region (Fig. 2b). Both figures show that, aside from local sources (Lille area: 8 %), most of the BC impacting the site originates from France (26 %, including the Paris area) and the Benelux countries (Belgium 13 %, the Netherlands, Luxemburg), followed by Germany (8 %), the United Kingdom (7 %, with the London area particularly highlighted), and shipping lanes in the English Channel (6 %) and the North Sea (9 %). Altogether, these origins account for 77 % of the total BC (with “others” representing additional European countries and maritime areas). These results align with previous findings on PM_{10} source regions in northern France, utilizing trajectory-based statistical models (TMs) (Waked et al., 2018) or a combina-

tion of TMs, chemical transport models, and in situ observations (Potier et al., 2019).

In Fig. 2c, the contributions from different emission sectors from INTERPLAY are presented, as well as in situ-derived BC_{ff} and BC_{wb} based on the aethalometer model. INTERPLAY results indicate that the majority of BC at ATOLL throughout the year originates from traffic (31 %), followed by shipping (25 %, including both sea/oceanic – 15 % – and inland waterways – 10 %), residential (21 %), and industry–manufacturing (17 %). Agricultural waste burning (4 %) and the power industry (2 %) are minor contributors to BC at ATOLL. Figure S5 illustrates the geographical distribution of the sectors. Interestingly, a comparison with in situ observations shows a remarkably comparable contribution of biomass-burning related BC, specifically from residential emissions and agricultural waste burning (25 %), with BC_{wb} (26 %). The attribution of shipping at ATOLL, exhibiting a spectral signature closer to BC_{ff} rather than BC_{wb} (as discussed in Corbin et al., 2019, for example), is supported by several aerosol observations in Dunkirk Harbor using aerosol mass spectrometry and source apportionment (Zhang et al., 2024), as well as by INTERPLAY analysis in Sect. 3.3. Conversely, the results suggest that BC_{ff} is not directly attributable to traffic emissions. According to our analysis, traffic corresponds only to 41 % of BC_{ff} at the ATOLL site, with the remainder attributed to shipping (33 %), industry–manufacturing (23 %), and a minor contribution of < 3 % from power generation. This finding warrants care when using BC_{ff} (also termed BC liquid fuel, BC_{lf}) from the aethalometer model interchangeably with traffic, particularly in regions with intense shipping activities, whether maritime or in canals.

Figure 3 shows the spatial distribution of BC and its relative distribution of sources and origins during summer (JJA) and winter (DJF). Spring and fall spatial distributions exhibit mixed patterns between the other contrasting seasons and are therefore only shown in the Supplement (Fig. S6). Results show a relatively constant fraction associated with local emissions (Lille) across all seasons (7 %–9 %), as well as contributions from France and Belgium, corresponding generally to about half of BC. The main geographical difference between seasons lies in the shipping contribution from the English Channel and the North Sea. Focusing solely on this sector, the North Sea accounts for 34 %, followed by the English Channel with 22 % (Fig. S7). Surprisingly, shipping is the predominant source of BC at ATOLL during summertime (38 %), with 12 % apportioned to inland waterways and 24 % to maritime emissions in the Channel and North Sea, despite the site being located 70 km from the coast and 90 km from Dunkirk Harbor. Following shipping, the major contributors during summer are traffic (33 %) and industry–manufacturing (17 %) with a minor contribution from residential sources (8 %), as expected for the season. The significant summertime contribution from shipping to BC is driven by increased activity (Jalkanen et al., 2016) and more fre-

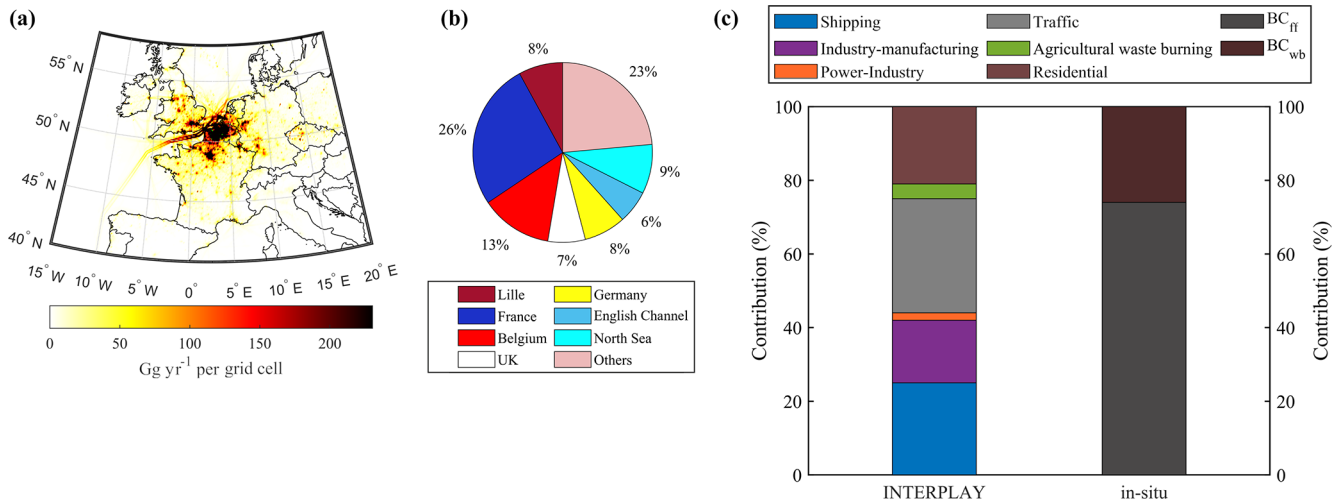


Figure 2. (a) Spatial contribution of BC to ATOLL in $Gg\ yr^{-1}$ per grid cell and its (b) relative contribution by region/country (note that France does not include Lille’s contribution) and (c) sectorial distributions according to INTERPLAY and in situ via the aethalometer model. Results over the period December 2016–December 2019.

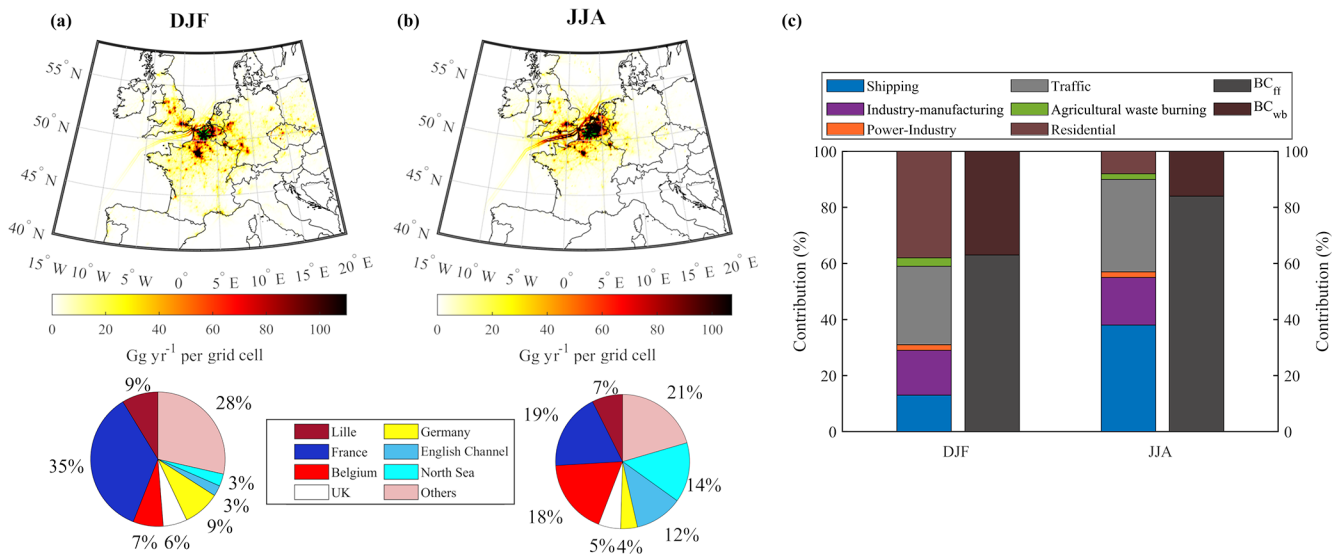


Figure 3. Spatial contribution of BC to ATOLL in $Gg\ yr^{-1}$ per grid cell and its relative contribution by region/country for winter (a) and summer (b) (note that France does not include Lille’s contribution) and (c) sectorial distributions according to INTERPLAY and in situ via the aethalometer model. Results over the period December 2016–December 2019.

quent favorable winds (Fig. 1) from the maritime sectors (North Sea and English Channel) combined with a decrease of vehicular traffic during summer holidays (Chebaicheb et al., 2023). Indeed, the southern North Sea, housing major harbors in Rotterdam, Antwerp, Hamburg, Zeebrugge, and Dunkirk, experiences one of the highest ship traffic densities in Europe (Eurostat, 2023). Corbett et al. (1999) reported that nearly 70 % of ship emissions occur in areas with potentially adverse effects on air quality inland. Liu et al. (2017), combining field measurements and modeling, estimated that ship emissions contribute 20 %–30 % ($2\text{--}7\ \mu g\ m^{-3}$) to $PM_{2.5}$

within tens of kilometers of coastal and riverside Shanghai during ship-plume-influenced periods.

During summer, in situ data yield a BC_{wb} contribution of 16 %, somewhat higher than residential and agricultural waste burning (9 %), possibly explained by unaccounted forest fires, not considered in INTERPLAY. Conversely, reflecting the impact on organic aerosol (Chebaicheb et al., 2023), residential emissions dominate BC sources during winter (38 %), followed by traffic (28 %), industry–manufacturing (16 %), and shipping (13 %). The power industry and agricultural waste burning contribute less than 5 % across all sea-

sions. BC_{wb} during winter closely mirrors the combined contribution of residential and agricultural waste burning from INTERPLAY (37 % and 40 %, respectively). Across both seasons, traffic accounts for only about 40 %–46 % of BC_{ff} , indicating that the latter should not be solely apportioned to the former, notably in regions with intense shipping activities.

3.3 Sectorial absorption spectral signature

In addition to assessing the geographical and source contributions of LAC observed at ATOLL, one of the interesting features of INTERPLAY is its ability to link additional in situ aerosol properties from observations with various BC sectorial sources (e.g., traffic, residential, shipping). As outlined in the methodology section, by using the in situ observations and INTERPLAY to filter data when the incident air mass comprises at least 20 % BC from a given source, we computed the averaged $AAE_{370-880\text{nm}}$ as well as concentrations of BC_{ff} and BC_{wb} from the spectral dependency. Results of the $AAE_{370-880\text{nm}}$ filtered by source type and region are shown in Fig. 4a and b, respectively. In Fig. 4a, the residential sector exhibits an average $AAE_{370-880\text{nm}}$ of approximately 1.5 (with values up to 1.6), whereas industry–manufacturing, traffic, and shipping emissions have a lower average $AAE_{370-880\text{nm}}$ of about 1.3. The comparable $AAE_{370-880\text{nm}}$ values among these three sources reinforce their categorization into BC_{ff} apportionment, as discussed in the previous section. Furthermore, the literature reports a range of AAE values for industry and shipping emissions. Helin et al. (2021) note that for the industry sector, $AAE_{370-950\text{nm}}$ ranges from < 0.7 when using pure coal to up to 1.3 when considering a mixture of coal and wood pellets. Conversely, for shipping, $AAE_{370-950\text{nm}}$ was observed up to 2.0 when high-sulfur content heavy fuel oil was used, compared to 1.4 when burning low-sulfur fuel. The data from ATOLL agree with a lower AAE range for shipping, suggesting a prevalence of low sulfur content fuels in the region, consistent with the fact that the North Sea and the English Channel are both sulfur emission-controlled areas (Jonson et al., 2020).

Interestingly, the obtained $AAE_{370-880\text{nm}}$ values do not align with the typically used aethalometer model (1 and 2 for AAE_{ff} and AAE_{wb} , respectively), for any of the sources (including traffic). Moreover, the values do not necessarily correspond to those identified in the literature (AAE_{ff} 0.9–1.1, and AAE_{wb} 1.6–3.5; Savadkoochi et al., 2023). This discrepancy can be attributed to the high variability of AAE, influenced by factors such as the combustion appliance, burned material, burn cycle phase, and time since emission. The AAE values of 1.3 and 1.6 for BC_{ff} - and BC_{wb} -associated sources could stem from source mixing within INTERPLAY itself (given the 20 % threshold) or be influenced by secondary processes, leading to BrC formation and/or a different mixing state (BC with non-absorbing coatings) (Chylek

et al., 2019; Moise et al., 2015; Saleh et al., 2013; X. Zhang et al., 2020).

Figure 4c–d show the in situ aerosol concentration associated with the main source regions for BC (France, Belgium, Germany, United Kingdom), separated into cold and warm seasons. The concentration of BC_{ff} is higher during the cold season across all regions, likely due to a shallow boundary layer, reduced dispersion, and increased emissions from the residential sector. When air masses originate from the east (e.g., Germany), the highest concentrations of both BC_{ff} and BC_{wb} are observed during the cold season. This is in line with previous findings, suggesting that these areas, known for being BC hotspots (e.g., transport, intensive agriculture, heavy industry, metallurgy, and exploitation of open mines), are generally associated with drier and colder air masses, leading to lower dispersion and favoring the accumulation of air pollutants (Asmi et al., 2011; Barnaba et al., 2011; Bovchaliuk et al., 2013; Giles et al., 2012; Waked et al., 2018). This contrasts with the United Kingdom, which, despite being a significant source of BC (Fig. S1), is generally accompanied by northerly winds that promote pollutant dispersion. During the warm period, both concentration and AAE values are generally lower than in the cold seasons, due to higher dispersion and reduced residential emissions. While differences across regions are less pronounced, the overall trend remains comparable to the cold season.

3.4 Brown carbon origins and lifetime

Over the studied period, in ATOLL the average BrC absorption coefficient at 370 nm was 5.1 Mm^{-1} , representing 22 % of the total absorption (Velazquez-Garcia et al., 2023). This fraction is comparable to Athens (24 %), despite their higher total absorption at 370 nm (15.9 Mm^{-1}) (Liakakou et al., 2020) and marked differences in weather conditions and heating fuel usage compared to Lille (Rehfeldt et al., 2020). Outside Europe, various sites report similar or higher contributions of BrC to aerosol light absorption, such as the southeastern margin of the Tibetan Plateau (20 % to 40 %) (Wang et al., 2019), central Amazon (17 %–26 %) (Saturno et al., 2018), the northern peninsular Southeast Asia (46 %) (Pani et al., 2021), and in Xi'an, China (41 %) (Zhu et al., 2021). Such significant differences ($> 40\%$) may be attributed to active fires over a given region, reflecting substantial open biomass-burning activities in and around the sampling location (Pani et al., 2021), along with some contribution from secondary BrC (Wang et al., 2019). At the ATOLL site, the contribution of BrC varies markedly from the warm to the cold season (from 22 % to 80 %), driven by wintertime residential emissions (Chebaicheb et al., 2023; Velazquez-Garcia et al., 2023).

Figure 5 shows the diel cycles of BrC absorption at 370 nm and the ratio between BC and BrC absorption during winter and summer. Overall, BrC decreased by 44 % as the day progressed, likely explained by the rising boundary layer

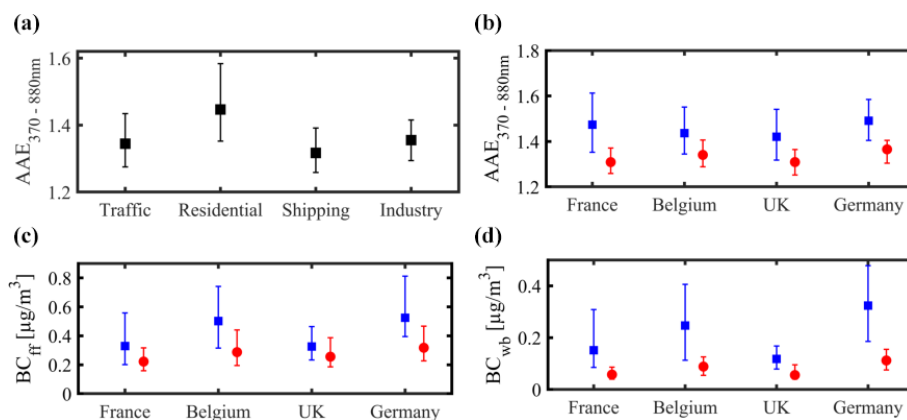


Figure 4. Median value (markers) and interquartile range (bars) for the absorption Ångström exponent calculated using the pair of wavelengths 370 and 880 nm ($AAE_{370-880\text{nm}}$), associated with main sectorial sources (a) and regions (b) during the cold (blue squares) and warm seasons (red circles). BC_{ff} (c) and BC_{wb} concentrations (d) in $\mu\text{g m}^{-3}$ associated with main regions during the cold and warm seasons, using the INTERPLAY method.

height and the increasing rate of photobleaching/volatilization as temperatures and solar radiation peak, leading to a more efficient mixing of plumes from different sources. During winter the diel profiles are consistent with those typically observed for BC_{wb} , primarily linked to primary emissions (Chebaicheb et al., 2023; Chen et al., 2022; Y. Zhang et al., 2019, 2020), with higher values during the late evening to early morning hours. In summer, in addition to wood combustion, BrC can be related to secondary formation through nighttime oxidation processes. Different chromophores emitted from various sources and/or formed in the atmosphere contribute to BrC. Laboratory studies (Lin et al., 2015; Flores et al., 2014; Teich et al., 2017) indicate that anthropogenic volatile organic compounds (benzene, toluene, phenols, and polycyclic aromatics hydrocarbons – PAHs) react with nitrogen oxides and produce nitro-aromatics. Several studies in urban areas (Liakakou et al., 2020; Satish et al., 2017; Stanaway et al., 2018; Wang et al., 2018; Q. Zhang et al., 2019; X. Zhang et al., 2020) show a similar trend, with higher values usually observed at night. However, other authors (Gao et al., 2022; Wang et al., 2019) show an opposite trend at remote sites, where higher values are observed during the day, attributed to the influence of photooxidation processes forming BrC through photochemical oxidation. Generally, BrC levels in the atmosphere result from a complex interplay of primary sources and secondary processes (condensation, volatilization), mixing with other aerosol types (core-shell mixing), and effects from local meteorology and boundary-layer dynamics (Lambe et al., 2013; Li et al., 2018; Romonosky et al., 2016).

By combining in situ observations with INTERPLAY as detailed in Sect. 3.2 and integrating the air mass travel time since emission (i.e., age by source), we can explore the impact of atmospheric aging on BrC lifetime. This investigation is specially focused on the cold season, given the

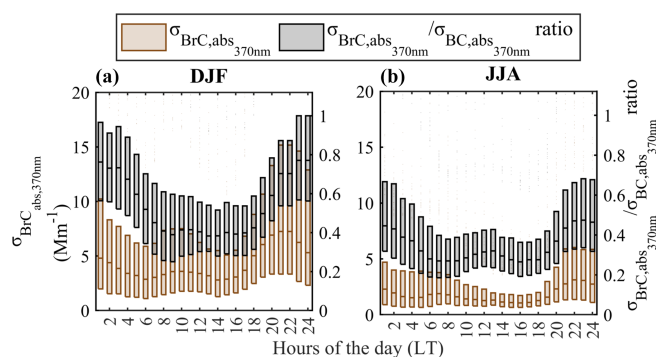


Figure 5. Diel cycles of BrC absorption coefficient calculated at 370 nm ($\sigma_{BrC,abs,370\text{nm}}$ in Mm^{-1}) (y axis, left) and BrC fraction (y axis, right) at the ATOLL platform for the cold (left plot) and warm seasons (right plot). The line is the median, whereas the box limits correspond to the interquartile range.

higher loadings and the distinct identification of BrC sources due to the widespread use of wood combustion for residential heating during that period. As described in Sect. 2, we further differentiate the traffic and residential sources into “fresh” (BC emitted less than 24 h ago) and “aged” (more than 24 h ago), focusing exclusively on the contribution of INTERPLAY “traffic” and “residential” sources. Relative contributions from residential and traffic emitted less than 24 h (fresh) and more than 24 h (aged) before reaching the site were analyzed concerning (a) the mass loading of BC and (b) the light-absorption coefficient of BrC calculated at 470 nm. Figure 6a shows the relative contributions of fresh and aged mass loadings (from INTERPLAY calculations) of BC from traffic and residential sources during the cold season. It shows a relatively balanced contribution among the four categories, with fresh contributions being slightly higher for both sectors (28%), while aged BC is higher for

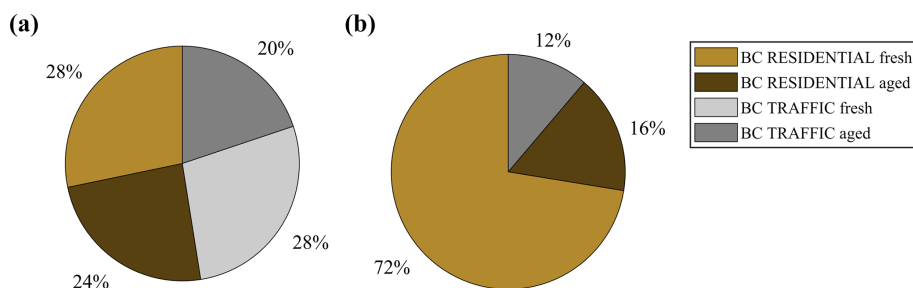


Figure 6. Relative contributions from residential and traffic emitted less than 24 h (fresh) and more than 24 h (aged) before reaching the ATOLL site: **(a)** the mass loading of BC and **(b)** the light absorption coefficient of BrC calculated at 470 nm.

residential sources than for traffic (24 % and 20 %, respectively). Figure 6b depicts the results of multiple linear regression, specifically identifying the relative contribution of these four categories of BC to in situ BrC. The dominating component is fresh residential (72 %), followed by aged residential (16 %) and aged traffic (12 %), with no significant contribution from fresh traffic. This analysis suggests that, after 24 h of atmospheric aging, the BrC components associated with residential heating undergo significant depletion. The data obtained here imply that despite the generally low photochemistry during wintertime, there is a substantial reduction in the BrC component from residential heating in this season. Table S2 provides the MAE values retrieved for the BC components through MLR. Notably, the MAE of BC from the aged residential sector decreases by a factor of 40 compared to fresh residential.

4 Conclusions and perspectives

In this paper, we investigated the local, national, and trans-boundary origins of light-absorbing carbonaceous aerosols influencing the ATOLL platform, as well as their associated spectral dependency. Our approach involved a comprehensive analysis of local winds, and we introduced an innovative method, named INTERPLAY, which combines in situ observations, back trajectories, and emission inventories. INTERPLAY is a computationally efficient tool, complementing in situ observations, particularly within a multi-year database. However, certain limitations are inherent in INTERPLAY. Notably, trajectory calculations from HYSPLIT, a component of the method, carry a known 15 %–30 % error (Stein et al., 2015). Additionally, uncertainties associated with emission inventories can influence sectorial and regional contributions. For example, Denier van der Gon et al. (2015) reported uncertainties in national emission estimates due to gaps in reported emission sources, particularly underestimations for OA over regions dominated by residential wood combustion. Discrepancies in inventories can also arise from variations in spatial grid methodologies, stemming from differences in model configurations, methodological assumptions, and weighting methodologies (Denier van der Gon et al., 2015;

Thunis et al., 2021). Finally, it is important to note that INTERPLAY does not account for dispersion, dilution, or deposition and therefore cannot calculate atmospheric concentrations. Instead, it provides integrated mass and relative contributions. Despite these limitations, the correlation between INTERPLAY results and in situ observations for relatively inert aerosol species, such as BC, over the studied 72 h period, has yielded only moderately lower correlation values compared to 3-D atmospheric modeling at ATOLL for 2018 (Pearson 0.60 vs. 0.81) (Chebaicheb et al., 2024). The precision of INTERPLAY in analyzing reactive/secondary atmospheric species is a topic for future exploration and testing.

INTERPLAY has been employed in this study to identify the sources of air masses (both regional and sectorial) reaching the ATOLL platform. This information has been used to examine their respective spectral dependency ($AAE_{370-880\text{ nm}}$), compare the apportionment of BC sources (BC_{fr} , BC_{wb}), and explore the BrC lifetime and origins since the time of emission, distinguishing air masses as either fresh (emitted less than 24 h ago) vs. aged (more than 24 h ago) BC aerosols. The key findings can be summarized in four points:

- Approximately 56 % of BC at ATOLL originates from France, Belgium, and shipping in the English Channel, while the United Kingdom and Germany contribute around 8 % each. Another minor region, mostly associated with eastern Europe, contributes about 25 %.
- The sectorial analysis reveals a surprisingly high contribution of shipping to ATOLL, with a yearly average of 25 %, rising to 38 % during summertime, despite the site distance from the coast (~ 70 km). In contrast, the residential source has the highest contribution during wintertime (38 %), decreasing to 8 % in summer. Traffic and industry–manufacturing contributions remain relatively constant throughout the seasons at 28 %–33 % and 16 %–17 %, respectively.
- Comparing INTERPLAY with the aethalometer model based on in situ data demonstrates excellent agreement in the relative contributions to residential heating and agricultural waste burning with BC_{wb} (25 % vs. 26 %, Thunis et al., 2021).

respectively). However, results show that traffic corresponds to only about 40 % of BC_{ff} at ATOLL, a suburban site. This result underscores the need for caution when apportioning BC_{ff} in other locations, especially in regions with intense shipping activities, without a thorough BC source apportionment analysis.

- d. In situ BrC absorption has been analyzed using INTERPLAY during the cold season, confirming the expected dominance of residential emissions, primarily from fresh emissions (< 24 h). This suggests a significant decrease in the BrC component after just 24 h, even during wintertime Europe.

While numerous studies have investigated BrC lifetime based on burning material and atmospheric aging, the currently existing data arise mostly from laboratory-controlled experiments or summertime events associated with wildfires. Therefore, studies focusing on the ubiquitous use of wood combustion for residential heating, particularly in central Europe, have been lacking to our knowledge. This has not only climatic implications but also direct consequences on in situ source apportionment methods (i.e., using AAE to retrieve BC_{ff} and BC_{wb}), potentially leading to the misattribution of 24 h aged BC_{wb} to traffic and, consequently, less efficient pollution abatement strategies.

Code and data availability. BC data are available in EBAS (<https://ebas-data.nilu.no/Default.aspx>, Ferreira de Brito and Riffault, 2023) for the French “Villeneuve d’Ascq” site. The code is available in the Supplement.

Supplement. The supplement related to this article is available online at: <https://doi.org/10.5194/ar-2-107-2024-supplement>.

Author contributions. Conceptualization: JFdB, SC, IC, and VR; data curation: AVG, SC, VR, and JFdB; formal analysis: AVG, JFdB, and SC; funding acquisition: AVG, IC, and VR; investigation: AVG, JFdB, SC, and VR; methodology: JFdB and SC; project administration: IC, and VR; resources: VR; software: AVG, JFdB, and SC; supervision: IC and VR; validation: JFdB, SC, and VR; visualization: AVG; writing – original draft: AVG and JFdB; writing – review and editing: SC, IC, and VR.

Competing interests. The contact author has declared that none of the authors has any competing interests.

Disclaimer. Publisher’s note: Copernicus Publications remains neutral with regard to jurisdictional claims made in the text, published maps, institutional affiliations, or any other geographical representation in this paper. While Copernicus Publications makes every effort to include appropriate place names, the final responsibility lies with the authors.

Acknowledgements. The authors are very grateful to the staff at LOA (Philippe Goloub, Frédérique Auriol, Romain De Filippi, Eric Bourriane) and CERI EE (Emmanuel Tison) for supporting the technical and logistical implementation of the instruments. We thank Thierry Podvin (LOA) and Aude Bourin (CERI EE) for providing the weather data at ATOLL and retrieving the 1 h back trajectories, respectively. The ATOLL site is one of the French ACTRIS National Facilities and contributes to the CARA program of the Laboratoire Central de Surveillance de la Qualité de l’Air (LCSQA).

Financial support. This research has been supported by the Labex CaPPA project, which is funded by the French National Research Agency (ANR) through the PIA (Programme d’Investissement d’Avenir) under contract ANR-11-LABX-0005-01; the CLIMIBIO and ECRIN projects, all financed by the Regional Council “Hauts-de-France” and the European Regional Development Fund (ERDF); the COST COLOSSAL Action (CA16109); the French Ministry of Environment, the Consejo Nacional de Ciencia y Tecnología (grant no. 2019-000004-01EXTF-00001) and the Conseil Régional Hauts-de-France (grant no. ALRC-000136).

Review statement. This paper was edited by Daniele Contini and reviewed by two anonymous referees.

References

- Asmi, A., Wiedensohler, A., Laj, P., Fjaeraa, A.-M., Sellegri, K., Birmili, W., Weingartner, E., Baltensperger, U., Zdimal, V., Zikova, N., Putaud, J.-P., Marinoni, A., Tunved, P., Hansson, H.-C., Fiebig, M., Kivekäs, N., Lihavainen, H., Asmi, E., Ulevicius, V., Aalto, P. P., Swietlicki, E., Kristensson, A., Mihalopoulos, N., Kalivitis, N., Kalapov, I., Kiss, G., de Leeuw, G., Henzing, B., Harrison, R. M., Beddows, D., O’Dowd, C., Jennings, S. G., Flentje, H., Weinhold, K., Meinhardt, F., Ries, L., and Kulmala, M.: Number size distributions and seasonality of submicron particles in Europe 2008–2009, *Atmos. Chem. Phys.*, 11, 5505–5538, <https://doi.org/10.5194/acp-11-5505-2011>, 2011.
- Barnaba, F., Angelini, F., Curci, G., and Gobbi, G. P.: An important fingerprint of wildfires on the European aerosol load, *Atmos. Chem. Phys.*, 11, 10487–10501, <https://doi.org/10.5194/acp-11-10487-2011>, 2011.
- Bond, T. C., Doherty, S. J., Fahey, D. W., Forster, P. M., Berntsen, T., DeAngelo, B. J., Flanner, M. G., Ghan, S., Kärcher, B., Koch, D., Kinne, S., Kondo, Y., Quinn, P. K., Sarofim, M. C., Schultz, M. G., Schulz, M., Venkataraman, C., Zhang, H., Zhang, S., Bellouin, N., Guttikunda, S. K., Hopke, P. K., Jacobson, M. Z., Kaiser, J. W., Klimont, Z., Lohmann, U., Schwarz, J. P., Shindell, D., Storelvmo, T., Warren, S. G., and Zender, C. S.: Bounding the role of black carbon in the climate system: A scientific assessment, *J. Geophys. Res.-Atmos.*, 118, 5380–5552, <https://doi.org/10.1002/jgrd.50171>, 2013.
- Bovchaliuk, A., Milinevsky, G., Danylevsky, V., Goloub, P., Dubovik, O., Holdak, A., Ducos, F., and Sosonkin, M.: Variability of aerosol properties over Eastern Europe observed from

- ground and satellites in the period from 2003 to 2011, *Atmos. Chem. Phys.*, 13, 6587–6602, <https://doi.org/10.5194/acp-13-6587-2013>, 2013.
- Chebaicheb, H., F. de Brito, J., Chen, G., Tison, E., Marchand, C., Prévôt, A. S. H., Favez, O., and Riffault, V.: Investigation of four-year chemical composition and organic aerosol sources of submicron particles at the ATOLL site in northern France, *Environ. Pollut.*, 330, 121805, <https://doi.org/10.1016/j.envpol.2023.121805>, 2023.
- Chebaicheb, H., De Brito, J. F., Amodeo, T., Couvidat, F., Petit, J.-E., Tison, E., Abbou, G., Baudic, A., Chatain, M., Chazeau, B., Marchand, N., Falhun, R., Francony, F., Ratier, C., Grenier, D., Vidaud, R., Zhang, S., Gille, G., Meunier, L., Marchand, C., Riffault, V., and Favez, O.: Multi-year high time resolution measurements of fine PM at 13 sites of the French Operational Network (CARA program): Data processing and chemical composition, submitted to *Earth System Science Data*, 2024.
- Chen, G., Canonaco, F., Tobler, A., Aas, W., Alastuey, A., Allan, J., Atabakhsh, S., Aurela, M., Baltensperger, U., Bougiatioti, A., De Brito, J. F., Ceburnis, D., Chazeau, B., Chebaicheb, H., Daellenbach, K. R., Ehn, M., El Haddad, I., Eleftheriadis, K., Favez, O., Flentje, H., Font, A., Fossom, K., Freney, E., Gini, M., Green, D. C., Heikkinen, L., Herrmann, H., Kalogridis, A.-C., Keernik, H., Lhotka, R., Lin, C., Lunder, C., Maasikmets, M., Manousakas, M. I., Marchand, N., Marin, C., Marmureanu, L., Mihalopoulos, N., Močnik, G., Nečeki, J., O'Dowd, C., Ovadnevaite, J., Peter, T., Petit, J.-E., Pikridas, M., Matthew Platt, S., Pokorná, P., Poulain, L., Priestman, M., Riffault, V., Rinaldi, M., Rózański, K., Schwarz, J., Sciare, J., Simon, L., Skiba, A., Slowik, J. G., Sosedova, Y., Stavroulas, I., Styszko, K., Teinmaa, E., Timonen, H., Tremper, A., Vasilescu, J., Via, M., Vodička, P., Wiedensohler, A., Zografou, O., Cruz Minguillón, M., and Prévôt, A. S. H.: European aerosol phenomenology – 8: Harmonised source apportionment of organic aerosol using 22 Year-long ACSM/AMS datasets, *Environ. Int.*, 166, 107325, <https://doi.org/10.1016/j.envint.2022.107325>, 2022.
- Chen, L.-W. A., Chow, J. C., Wang, X., Cao, J., Mao, J., and Watson, J. G.: Brownness of Organic Aerosol over the United States: Evidence for Seasonal Biomass Burning and Photobleaching Effects, *Environ. Sci. Technol.*, 55, 8561–8572, <https://doi.org/10.1021/acs.est.0c08706>, 2021.
- Chylek, P., Lee, J. E., Romonosky, D. E., Gallo, F., Lou, S., Shrivastava, M., Carrico, C. M., Aiken, A. C., and Dubey, M. K.: Mie Scattering Captures Observed Optical Properties of Ambient Biomass Burning Plumes Assuming Uniform Black, Brown, and Organic Carbon Mixtures, *J. Geophys. Res.-Atmos.*, 124, 11406–11427, <https://doi.org/10.1029/2019JD031224>, 2019.
- Corbett, J. J., Fischbeck, P. S., and Pandis, S. N.: Global nitrogen and sulfur inventories for oceangoing ships, *J. Geophys. Res.-Atmos.*, 104, 3457–3470, <https://doi.org/10.1029/1998JD100040>, 1999.
- Corbin, J. C., Czech, H., Massabò, D., de Mongeot, F. B., Jakobi, G., Liu, F., Lobo, P., Mennucci, C., Mensah, A. A., Orasche, J., Pieber, S. M., Prévôt, A. S. H., Stengel, B., Tay, L.-L., Zanatta, M., Zimmermann, R., El Haddad, I., and Gysel, M.: Infrared-absorbing carbonaceous tar can dominate light absorption by marine-engine exhaust, *npj Clim. Atmos. Sci.*, 2, 1–10, <https://doi.org/10.1038/s41612-019-0069-5>, 2019.
- Crippa, M., Solazzo, E., Huang, G., Guizzardi, D., Koffi, E., Muntean, M., Schieberle, C., Friedrich, R., and Janssens-Maenhout, G.: High resolution temporal profiles in the Emissions Database for Global Atmospheric Research, *Sci. Data*, 7, 121, <https://doi.org/10.1038/s41597-020-0462-2>, 2020.
- Cuesta-Mosquera, A., Močnik, G., Drinovec, L., Müller, T., Pfeifer, S., Minguillón, M. C., Briel, B., Buckley, P., Dudoitis, V., Fernández-García, J., Fernández-Amado, M., Ferreira De Brito, J., Riffault, V., Flentje, H., Heffernan, E., Kalivitis, N., Kalogridis, A.-C., Keernik, H., Marmureanu, L., Luoma, K., Marinoni, A., Pikridas, M., Schauer, G., Serfozo, N., Servomaa, H., Titos, G., Yus-Díez, J., Zioła, N., and Wiedensohler, A.: Intercomparison and characterization of 23 Aethalometers under laboratory and ambient air conditions: procedures and unit-to-unit variabilities, *Atmos. Meas. Tech.*, 14, 3195–3216, <https://doi.org/10.5194/amt-14-3195-2021>, 2021.
- De Haan, D. O., Hawkins, L. N., Kononenko, J. A., Turley, J. J., Corrigan, A. L., Tolbert, M. A., and Jimenez, J. L.: Formation of Nitrogen-Containing Oligomers by Methylglyoxal and Amines in Simulated Evaporating Cloud Droplets, *Environ. Sci. Technol.*, 45, 984–991, <https://doi.org/10.1021/es102933x>, 2011.
- Denier van der Gon, H. A. C., Bergström, R., Fountoukis, C., Johansson, C., Pandis, S. N., Simpson, D., and Visschedijk, A. J. H.: Particulate emissions from residential wood combustion in Europe – revised estimates and an evaluation, *Atmos. Chem. Phys.*, 15, 6503–6519, <https://doi.org/10.5194/acp-15-6503-2015>, 2015.
- Denjean, C., Brito, J., Libois, Q., Mallet, M., Bourriane, T., Burnet, F., Dupuy, R., Flamant, C., and Knippertz, P.: Unexpected Biomass Burning Aerosol Absorption Enhancement Explained by Black Carbon Mixing State, *Geophys. Res. Lett.*, 47, e2020GL089055, <https://doi.org/10.1029/2020GL089055>, 2020.
- de Sá, S. S., Rizzo, L. V., Palm, B. B., Campuzano-Jost, P., Day, D. A., Yee, L. D., Wernis, R., Isaacman-VanWertz, G., Brito, J., Carbone, S., Liu, Y. J., Sedlacek, A., Springston, S., Goldstein, A. H., Barbosa, H. M. J., Alexander, M. L., Artaxo, P., Jimenez, J. L., and Martin, S. T.: Contributions of biomass-burning, urban, and biogenic emissions to the concentrations and light-absorbing properties of particulate matter in central Amazonia during the dry season, *Atmos. Chem. Phys.*, 19, 7973–8001, <https://doi.org/10.5194/acp-19-7973-2019>, 2019.
- Drinovec, L., Močnik, G., Zotter, P., Prévôt, A. S. H., Ruckstuhl, C., Coz, E., Rupakheti, M., Sciare, J., Müller, T., Wiedensohler, A., and Hansen, A. D. A.: The “dual-spot” Aethalometer: an improved measurement of aerosol black carbon with real-time loading compensation, *Atmos. Meas. Tech.*, 8, 1965–1979, <https://doi.org/10.5194/amt-8-1965-2015>, 2015.
- Eurostat: Maritime freight and vessels statistics, Eurostat, https://ec.europa.eu/eurostat/statistics-explained/index.php?title=Maritime_freight_and_vessels_statistics#The_eight_largest_cargo_ports_in_the_EU_remained_the_same_in_2021_compared_with_2020, last access: 7 August 2023.
- Favez, O., Weber, S., Petit, J.-E., Alleman, L. Y., Albinet, A., Riffault, V., Chazeau, B., Amodeo, T., Salameh, D., Zhang, Y., Shrivastava, D., Samaké, A., Aujay-Plouzeau, R., Papin, A., Bonnaire, N., Boullanger, C., Chatain, M., Chevrier, F., Detournay, A., Dominik-Sègue, M., Falhun, R., Garbin, C., Ghersi, V., Grignon, G., Levigoureux, G., Pontet, S., Rangognio, J., Zhang, S., Besombes, J.-L., Conil, S., Uzu, G., Savarino, J.,

- Marchand, N., Gros, V., Marchand, C., Jaffrezo, J.-L., and Leoz-Garziandia, E.: Overview of the French Operational Network for In Situ Observation of PM Chemical Composition and Sources in Urban Environments (CARA Program), *Atmosphere*, 12, 207, <https://doi.org/10.3390/atmos12020207>, 2021.
- Ferreira de Brito, J. and Riffault, V.: Aerosol light absorption at the ATOLL platform in Villeneuve d'Ascq (France) 2016–2019, EBAS [data set], <https://ebas-data.nilu.no/Default.aspx>, last access: 7 August 2023.
- Flores, J. M., Washenfelder, R. A., Adler, G., Lee, H. J., Segev, L., Laskin, J., Laskin, A., Nizkorodov, S. A., Brown, S. S., and Rudich, Y.: Complex refractive indices in the near-ultraviolet spectral region of biogenic secondary organic aerosol aged with ammonia, *Phys. Chem. Chem. Phys.*, 16, 10629–10642, <https://doi.org/10.1039/C4CP01009D>, 2014.
- Forrister, H., Liu, J., Scheuer, E., Dibb, J., Ziemba, L., Thornhill, K. L., Anderson, B., Diskin, G., Perring, A. E., Schwarz, J. P., Campuzano-Jost, P., Day, D. A., Palm, B. B., Jimenez, J. L., Nenes, A., and Weber, R. J.: Evolution of brown carbon in wildfire plumes, *Geophys. Res. Lett.*, 42, 4623–4630, <https://doi.org/10.1002/2015GL063897>, 2015.
- Forster, P., Storelvmo, T., Armour, K., Collins, W., Dufresne, J.-L., Frame, D., Lunt, D. J., Mauritsen, T., Palmer, M. D., Watanabe, M., Wild, M., and Zhang, X.: The Earth's energy budget, climate feedbacks, and climate sensitivity, in: *Climate Change 2021: The Physical Science Basis. Contribution of Working Group I to the Sixth Assessment Report of the Intergovernmental Panel on Climate Change*, edited by: Masson-Delmotte, V., Zhai, P., Pirani, A., Connors, S. L., Péan, C., Berger, S., Caud, N., Chen, Y., Goldfarb, L., Gomis, M. I., Huang, M., Leitzell, K., Lonnoy, E., Matthews, J. B. R., Maycock, T. K., Waterfield, T., Yelekçi, Ö., Yu, R., and Zhou, B., Cambridge University Press, 7, 923–1054, <https://doi.org/10.1017/9781009157896.009>, 2021.
- Gao, Y., Wang, Q., Li, L., Dai, W., Yu, J., Ding, L., Li, J., Xin, B., Ran, W., Han, Y., and Cao, J.: Optical properties of mountain primary and secondary brown carbon aerosols in summertime, *Sci. Total Environ.*, 806, 150570, <https://doi.org/10.1016/j.scitotenv.2021.150570>, 2022.
- Giglio, L., Randerson, J. T., and van der Werf, G. R.: Analysis of daily, monthly, and annual burned area using the fourth-generation global fire emissions database (GFED4), *J. Geophys. Res.-Biogeo.*, 118, 317–328, <https://doi.org/10.1002/jgrg.20042>, 2013.
- Giles, D. M., Holben, B. N., Eck, T. F., Sinyuk, A., Smirnov, A., Slutsker, I., Dickerson, R. R., Thompson, A. M., and Schafer, J. S.: An analysis of AERONET aerosol absorption properties and classifications representative of aerosol source regions, *J. Geophys. Res.-Atmos.*, 117, D17203, <https://doi.org/10.1029/2012JD018127>, 2012.
- Greene, C. A., Thirumalai, K., Kearney, K. A., Delgado, J. M., Schwanghart, W., Wolfenbarger, N. S., Thyng, K. M., Gwyther, D. E., Gardner, A. S., and Blankenship, D. D.: The Climate Data Toolbox for Matlab, Zenodo [code], <https://doi.org/10.5281/zenodo.2590731>, 2019.
- Haan, D. O. D., Corrigan, A. L., Smith, K. W., Stroik, D. R., Turley, J. J., Lee, F. E., Tolbert, M. A., Jimenez, J. L., Cordova, K. E., and Ferrell, G. R.: Secondary Organic Aerosol-Forming Reactions of Glyoxal with Amino Acids, *Environ. Sci. Technol.*, 43, 2818–2824, <https://doi.org/10.1021/es803534f>, 2009.
- Harrison, M. A. J., Barra, S., Borghesi, D., Vione, D., Arsene, C., and Iulian Olariu, R.: Nitrated phenols in the atmosphere: a review, *Atmos. Environ.*, 39, 231–248, <https://doi.org/10.1016/j.atmosenv.2004.09.044>, 2005.
- He, Q., Tomaz, S., Li, C., Zhu, M., Meidan, D., Riva, M., Laskin, A., Brown, S. S., George, C., Wang, X., and Rudich, Y.: Optical Properties of Secondary Organic Aerosol Produced by Nitrate Radical Oxidation of Biogenic Volatile Organic Compounds, *Environ. Sci. Technol.*, 55, 2878–2889, <https://doi.org/10.1021/acs.est.0c06838>, 2021.
- Helin, A., Virkkula, A., Backman, J., Pirjola, L., Sippula, O., Aakko-Saksa, P., Väätäinen, S., Mylläri, F., Järvinen, A., Bloss, M., Aurela, M., Jakobi, G., Karjalainen, P., Zimmermann, R., Jokiniemi, J., Saarikoski, S., Tissari, J., Rönkkö, T., Niemi, J. V., and Timonen, H.: Variation of Absorption Ångström Exponent in Aerosols From Different Emission Sources, *J. Geophys. Res.-Atmos.*, 126, e2020JD034094, <https://doi.org/10.1029/2020JD034094>, 2021.
- Hems, R. F., Schnitzler, E. G., Liu-Kang, C., Cappa, C. D., and Abbatt, J. P. D.: Aging of Atmospheric Brown Carbon Aerosol, *ACS Earth Space Chem.*, 5, 722–748, <https://doi.org/10.1021/acsearthspacechem.0c00346>, 2021.
- Jalkanen, J.-P., Johansson, L., and Kukkonen, J.: A comprehensive inventory of ship traffic exhaust emissions in the European sea areas in 2011, *Atmos. Chem. Phys.*, 16, 71–84, <https://doi.org/10.5194/acp-16-71-2016>, 2016.
- Jonson, J. E., Gauss, M., Schulz, M., Jalkanen, J.-P., and Fagerli, H.: Effects of global ship emissions on European air pollution levels, *Atmos. Chem. Phys.*, 20, 11399–11422, <https://doi.org/10.5194/acp-20-11399-2020>, 2020.
- Kanakidou, M., Seinfeld, J. H., Pandis, S. N., Barnes, I., Dentener, F. J., Facchini, M. C., Van Dingenen, R., Ervens, B., Nenes, A., Nielsen, C. J., Swietlicki, E., Putaud, J. P., Balkanski, Y., Fuzzi, S., Horth, J., Moortgat, G. K., Winterhalter, R., Myhre, C. E. L., Tsigaridis, K., Vignati, E., Stephanou, E. G., and Wilson, J.: Organic aerosol and global climate modelling: a review, *Atmos. Chem. Phys.*, 5, 1053–1123, <https://doi.org/10.5194/acp-5-1053-2005>, 2005.
- Klimont, Z., Kupiainen, K., Heyes, C., Purohit, P., Cofala, J., Rafaj, P., Borken-Kleefeld, J., and Schöpp, W.: Global anthropogenic emissions of particulate matter including black carbon, *Atmos. Chem. Phys.*, 17, 8681–8723, <https://doi.org/10.5194/acp-17-8681-2017>, 2017.
- Kumar, N. K., Corbin, J. C., Bruns, E. A., Massabó, D., Slowik, J. G., Drinovec, L., Močnik, G., Prati, P., Vlachou, A., Baltensperger, U., Gysel, M., El-Haddad, I., and Prévôt, A. S. H.: Production of particulate brown carbon during atmospheric aging of residential wood-burning emissions, *Atmos. Chem. Phys.*, 18, 17843–17861, <https://doi.org/10.5194/acp-18-17843-2018>, 2018.
- Lambe, A. T., Cappa, C. D., Massoli, P., Onasch, T. B., Forestieri, S. D., Martin, A. T., Cummings, M. J., Croasdale, D. R., Brune, W. H., Worsnop, D. R., and Davidovits, P.: Relationship between oxidation level and optical properties of secondary organic aerosol, *Environ. Sci. Technol.*, 47, 6349–6357, <https://doi.org/10.1021/es401043j>, 2013.
- Laskin, A., Laskin, J., and Nizkorodov, S. A.: Chemistry of Atmospheric Brown Carbon, *Chem. Rev.*, 115, 4335–4382, <https://doi.org/10.1021/cr5006167>, 2015.

- Li, S., Zhu, M., Yang, W., Tang, M., Huang, X., Yu, Y., Fang, H., Yu, X., Yu, Q., Fu, X., Song, W., Zhang, Y., Bi, X., and Wang, X.: Filter-based measurement of light absorption by brown carbon in PM_{2.5} in a megacity in South China, *Sci. Total Environ.*, 633, 1360–1369, <https://doi.org/10.1016/j.scitotenv.2018.03.235>, 2018.
- Liakakou, E., Kaskaoutis, D. G., Grivas, G., Stavroulas, I., Tsagkaraki, M., Paraskevopoulou, D., Bougiatioti, A., Dumka, U. C., Gerasopoulos, E., and Mihalopoulos, N.: Long-term brown carbon spectral characteristics in a Mediterranean city (Athens), *Sci. Total Environ.*, 708, 135019, <https://doi.org/10.1016/j.scitotenv.2019.135019>, 2020.
- Lin, P., Laskin, J., Nizkorodov, S. A., and Laskin, A.: Revealing Brown Carbon Chromophores Produced in Reactions of Methylglyoxal with Ammonium Sulfate, *Environ. Sci. Technol.*, 49, 14257–14266, <https://doi.org/10.1021/acs.est.5b03608>, 2015.
- Lin, P., Bluvshstein, N., Rudich, Y., Nizkorodov, S. A., Laskin, J., and Laskin, A.: Molecular Chemistry of Atmospheric Brown Carbon Inferred from a Nationwide Biomass Burning Event, *Environ. Sci. Technol.*, 51, 11561–11570, <https://doi.org/10.1021/acs.est.7b02276>, 2017.
- Liu, C., Chung, C. E., Yin, Y., and Schnaiter, M.: The absorption Ångström exponent of black carbon: from numerical aspects, *Atmos. Chem. Phys.*, 18, 6259–6273, <https://doi.org/10.5194/acp-18-6259-2018>, 2018.
- Liu, D., He, C., Schwarz, J. P., and Wang, X.: Lifecycle of light-absorbing carbonaceous aerosols in the atmosphere, *Clim. Atmos. Sci.*, 3, 40, <https://doi.org/10.1038/s41612-020-00145-8>, 2020.
- Liu, D., Li, S., Hu, D., Kong, S., Cheng, Y., Wu, Y., Ding, S., Hu, K., Zheng, S., Yan, Q., Zheng, H., Zhao, D., Tian, P., Ye, J., Huang, M., and Ding, D.: Evolution of Aerosol Optical Properties from Wood Smoke in Real Atmosphere Influenced by Burning Phase and Solar Radiation, *Environ. Sci. Technol.*, 55, 5677–5688, <https://doi.org/10.1021/acs.est.0c07569>, 2021.
- Liu, J., Lin, P., Laskin, A., Laskin, J., Kathmann, S. M., Wise, M., Caylor, R., Imholt, F., Selimovic, V., and Shilling, J. E.: Optical properties and aging of light-absorbing secondary organic aerosol, *Atmos. Chem. Phys.*, 16, 12815–12827, <https://doi.org/10.5194/acp-16-12815-2016>, 2016.
- Liu, Z., Lu, X., Feng, J., Fan, Q., Zhang, Y., and Yang, X.: Influence of Ship Emissions on Urban Air Quality: A Comprehensive Study Using Highly Time-Resolved Online Measurements and Numerical Simulation in Shanghai, *Environ. Sci. Technol.*, 51, 202–211, <https://doi.org/10.1021/acs.est.6b03834>, 2017.
- Lu, J. W., Flores, J. M., Lavi, A., Abo-Riziq, A., and Rudich, Y.: Changes in the optical properties of benzo[a]pyrene-coated aerosols upon heterogeneous reactions with NO₂ and NO₃, *Phys. Chem. Chem. Phys.*, 13, 6484–6492, <https://doi.org/10.1039/C0CP02114H>, 2011.
- Lu, Z., Streets, D. G., Winijkul, E., Yan, F., Chen, Y., Bond, T. C., Feng, Y., Dubey, M. K., Liu, S., Pinto, J. P., and Carmichael, G. R.: Light Absorption Properties and Radiative Effects of Primary Organic Aerosol Emissions, *Environ. Sci. Technol.*, 49, 4868–4877, <https://doi.org/10.1021/acs.est.5b00211>, 2015.
- Moise, T., Flores, J. M., and Rudich, Y.: Optical Properties of Secondary Organic Aerosols and Their Changes by Chemical Processes, *Chem. Rev.*, 115, 4400–4439, <https://doi.org/10.1021/cr5005259>, 2015.
- Ng, N. L., Brown, S. S., Archibald, A. T., Atlas, E., Cohen, R. C., Crowley, J. N., Day, D. A., Donahue, N. M., Fry, J. L., Fuchs, H., Griffin, R. J., Guzman, M. I., Herrmann, H., Hodzic, A., Iinuma, Y., Jimenez, J. L., Kiendler-Scharr, A., Lee, B. H., Luecken, D. J., Mao, J., McLaren, R., Mutzel, A., Osthoff, H. D., Ouyang, B., Picquet-Varrault, B., Platt, U., Pye, H. O. T., Rudich, Y., Schwantes, R. H., Shiraiwa, M., Stutz, J., Thornton, J. A., Tilgner, A., Williams, B. J., and Zaveri, R. A.: Nitrate radicals and biogenic volatile organic compounds: oxidation, mechanisms, and organic aerosol, *Atmos. Chem. Phys.*, 17, 2103–2162, <https://doi.org/10.5194/acp-17-2103-2017>, 2017.
- Nguyen, T. B., Laskin, A., Laskin, J., and Nizkorodov, S. A.: Brown carbon formation from ketoaldehydes of biogenic monoterpenes, *Faraday Discuss.*, 165, 473–494, <https://doi.org/10.1039/C3FD00036B>, 2013.
- Ødemark, K., Dalsøren, S. B., Samset, B. H., Berntsen, T. K., Fuglestedt, J. S., and Myhre, G.: Short-lived climate forcers from current shipping and petroleum activities in the Arctic, *Atmos. Chem. Phys.*, 12, 1979–1993, <https://doi.org/10.5194/acp-12-1979-2012>, 2012.
- Pani, S. K., Lin, N.-H., Griffith, S. M., Chantara, S., Lee, C.-T., Thepnuan, D., and Tsai, Y. I.: Brown carbon light absorption over an urban environment in northern peninsular Southeast Asia, *Environ. Pollut.*, 276, 116735, <https://doi.org/10.1016/j.envpol.2021.116735>, 2021.
- Pöhlker, C., Walter, D., Paulsen, H., Könemann, T., Rodríguez-Caballero, E., Moran-Zuloaga, D., Brito, J., Carbone, S., Degrande, C., Després, V. R., Ditas, F., Holanda, B. A., Kaiser, J. W., Lammel, G., Lavrič, J. V., Ming, J., Pickersgill, D., Pöhlker, M. L., Praß, M., Löbs, N., Saturno, J., Sörgel, M., Wang, Q., Weber, B., Wolff, S., Artaxo, P., Pöschl, U., and Andreae, M. O.: Land cover and its transformation in the backward trajectory footprint region of the Amazon Tall Tower Observatory, *Atmos. Chem. Phys.*, 19, 8425–8470, <https://doi.org/10.5194/acp-19-8425-2019>, 2019.
- Potier, E., Waked, A., Bourin, A., Minvielle, F., Péré, J. C., Perdrix, E., Michoud, V., Riffault, V., Alleman, L. Y., and Sauvage, S.: Characterizing the regional contribution to PM₁₀ pollution over northern France using two complementary approaches: Chemistry transport and trajectory-based receptor models, *Atmos. Res.*, 223, 1–14, <https://doi.org/10.1016/j.atmosres.2019.03.002>, 2019.
- Pu, W., Wang, X., Wei, H., Zhou, Y., Shi, J., Hu, Z., Jin, H., and Chen, Q.: Properties of black carbon and other insoluble light-absorbing particles in seasonal snow of northwestern China, *The Cryosphere*, 11, 1213–1233, <https://doi.org/10.5194/tc-11-1213-2017>, 2017.
- Rehfeldt, M., Worrell, E., Eichhammer, W., and Fleiter, T.: A review of the emission reduction potential of fuel switch towards biomass and electricity in European basic materials industry until 2030, *Renew. Sust. Energ. Rev.*, 120, 109672, <https://doi.org/10.1016/j.rser.2019.109672>, 2020.
- Roig Rodelas, R., Perdrix, E., Herbin, B., and Riffault, V.: Characterization and variability of inorganic aerosols and their gaseous precursors at a suburban site in northern France over one year (2015–2016), *Atmos. Environ.*, 200, 142–157, <https://doi.org/10.1016/j.atmosenv.2018.11.041>, 2019.
- Romonosky, D. E., Ali, N. N., Saiduddin, M. N., Wu, M., Lee, H. J., Aiona, P. K., and Nizkorodov, S. A.: Effective absorp-

- tion cross sections and photolysis rates of anthropogenic and biogenic secondary organic aerosols, *Atmos. Environ.*, **C**, 172–179, <https://doi.org/10.1016/j.atmosenv.2015.10.019>, 2016.
- Saleh, R.: From Measurements to Models: Toward Accurate Representation of Brown Carbon in Climate Calculations, *Curr. Pollution Rep.*, **6**, 90–104, <https://doi.org/10.1007/s40726-020-00139-3>, 2020.
- Saleh, R., Hennigan, C. J., McMeeking, G. R., Chuang, W. K., Robinson, E. S., Coe, H., Donahue, N. M., and Robinson, A. L.: Absorptivity of brown carbon in fresh and photo-chemically aged biomass-burning emissions, *Atmos. Chem. Phys.*, **13**, 7683–7693, <https://doi.org/10.5194/acp-13-7683-2013>, 2013.
- Sandradewi, J., Prévôt, A. S. H., Szidat, S., Perron, N., Alfarra, M. R., Lanz, V. A., Weingartner, E., and Baltensperger, U.: Using Aerosol Light Absorption Measurements for the Quantitative Determination of Wood Burning and Traffic Emission Contributions to Particulate Matter, *Environ. Sci. Technol.*, **42**, 3316–3323, <https://doi.org/10.1021/es702253m>, 2008.
- Satish, R., Shamjad, P., Thamban, N., Tripathi, S., and Rastogi, N.: Temporal Characteristics of Brown Carbon over the Central Indo-Gangetic Plain, *Environ. Sci. Technol.*, **51**, 6765–6772, <https://doi.org/10.1021/acs.est.7b00734>, 2017.
- Saturno, J., Holanda, B. A., Pöhlker, C., Ditas, F., Wang, Q., Moran-Zuloaga, D., Brito, J., Carbone, S., Cheng, Y., Chi, X., Ditas, J., Hoffmann, T., Hrabe de Angelis, I., Könemann, T., Lavrič, J. V., Ma, N., Ming, J., Paulsen, H., Pöhlker, M. L., Rizzo, L. V., Schlag, P., Su, H., Walter, D., Wolff, S., Zhang, Y., Artaxo, P., Pöschl, U., and Andreae, M. O.: Black and brown carbon over central Amazonia: long-term aerosol measurements at the ATTO site, *Atmos. Chem. Phys.*, **18**, 12817–12843, <https://doi.org/10.5194/acp-18-12817-2018>, 2018.
- Savvadkoochi, M., Pandolfi, M., Reche, C., Niemi, J. V., Mooibroek, D., Titos, G., Green, D. C., Tremper, A. H., Hueglin, C., Liakakou, E., Mihalopoulos, N., Stavroulas, I., Artiñano, B., Coz, E., Alados-Arboledas, L., Beddows, D., Riffault, V., De Brito, J. F., Bastian, S., Baudic, A., Colombi, C., Costabile, F., Chazéau, B., Marchand, N., Gómez-Amo, J. L., Estellés, V., Matos, V., van der Gaag, E., Gille, G., Luoma, K., Manninen, H. E., Norman, M., Silvergren, S., Petit, J.-E., Putaud, J.-P., Rattigan, O. V., Timonen, H., Tuch, T., Merkel, M., Weinhold, K., Vratolis, S., Vasilescu, J., Favez, O., Harrison, R. M., Laj, P., Wiedensohler, A., Hopke, P. K., Petäjä, T., Alastuey, A., and Querol, X.: The variability of mass concentrations and source apportionment analysis of equivalent black carbon across urban Europe, *Environ. Int.*, **178**, 108081, <https://doi.org/10.1016/j.envint.2023.108081>, 2023.
- Shapiro, E. L., Szprengiel, J., Sareen, N., Jen, C. N., Giordano, M. R., and McNeill, V. F.: Light-absorbing secondary organic material formed by glyoxal in aqueous aerosol mimics, *Atmos. Chem. Phys.*, **9**, 2289–2300, <https://doi.org/10.5194/acp-9-2289-2009>, 2009.
- Stanaway, J. D., Afshin, A., Gakidou, E., et al.: Global, regional, and national comparative risk assessment of 84 behavioural, environmental and occupational, and metabolic risks or clusters of risks for 195 countries and territories, 1990–2017: a systematic analysis for the Global Burden of Disease Study 2017, *Lancet*, **392**, 1923–1994, [https://doi.org/10.1016/S0140-6736\(18\)32225-6](https://doi.org/10.1016/S0140-6736(18)32225-6), 2018.
- Stein, A. F., Draxler, R. R., Rolph, G. D., Stunder, B. J. B., Cohen, M. D., and Ngan, F.: NOAA's HYSPLIT Atmospheric Transport and Dispersion Modeling System, *B. Am. Meteorol. Soc.*, **96**, 2059–2077, <https://doi.org/10.1175/BAMS-D-14-00110.1>, 2015.
- Sun, J., Xie, C., Xu, W., Chen, C., Ma, N., Xu, W., Lei, L., Li, Z., He, Y., Qiu, Y., Wang, Q., Pan, X., Su, H., Cheng, Y., Wu, C., Fu, P., Wang, Z., and Sun, Y.: Light absorption of black carbon and brown carbon in winter in North China Plain: comparisons between urban and rural sites, *Sci. Total Environ.*, **770**, 144821, <https://doi.org/10.1016/j.scitotenv.2020.144821>, 2021.
- Teich, M., van Pinxteren, D., Wang, M., Kecorius, S., Wang, Z., Müller, T., Močnik, G., and Herrmann, H.: Contributions of nitrated aromatic compounds to the light absorption of water-soluble and particulate brown carbon in different atmospheric environments in Germany and China, *Atmos. Chem. Phys.*, **17**, 1653–1672, <https://doi.org/10.5194/acp-17-1653-2017>, 2017.
- Thunis, P., Crippa, M., Cuvelier, C., Guizzardi, D., de Meij, A., Oreggioni, G., and Pisoni, E.: Sensitivity of air quality modelling to different emission inventories: A case study over Europe, *Atmos. Environ.*, **X**, **10**, 100111, <https://doi.org/10.1016/j.aeoa.2021.100111>, 2021.
- Velazquez-Garcia, A., Crumeyrolle, S., de Brito, J. F., Tison, E., Bourriane, E., Chiapello, I., and Riffault, V.: Deriving composition-dependent aerosol absorption, scattering and extinction mass efficiencies from multi-annual high time resolution observations in Northern France, *Atmos. Environ.*, **298**, 119613, <https://doi.org/10.1016/j.atmosenv.2023.119613>, 2023.
- Waked, A., Bourin, A., Michoud, V., Perdrix, E., Alleman, L. Y., Sauvage, S., Delaunay, T., Vermeesch, S., Petit, J.-E., and Riffault, V.: Investigation of the geographical origins of PM₁₀ based on long, medium and short-range air mass back-trajectories impacting Northern France during the period 2009–2013, *Atmos. Environ.*, **193**, 143–152, <https://doi.org/10.1016/j.atmosenv.2018.08.015>, 2018.
- Wang, Q., Saturno, J., Chi, X., Walter, D., Lavric, J. V., Moran-Zuloaga, D., Ditas, F., Pöhlker, C., Brito, J., Carbone, S., Artaxo, P., and Andreae, M. O.: Modeling investigation of light-absorbing aerosols in the Amazon Basin during the wet season, *Atmos. Chem. Phys.*, **16**, 14775–14794, <https://doi.org/10.5194/acp-16-14775-2016>, 2016.
- Wang, Q., Cao, J., Han, Y., Tian, J., Zhu, C., Zhang, Y., Zhang, N., Shen, Z., Ni, H., Zhao, S., and Wu, J.: Sources and physicochemical characteristics of black carbon aerosol from the southeastern Tibetan Plateau: internal mixing enhances light absorption, *Atmos. Chem. Phys.*, **18**, 4639–4656, <https://doi.org/10.5194/acp-18-4639-2018>, 2018.
- Wang, Q., Han, Y., Ye, J., Liu, S., Pongpiachan, S., Zhang, N., Han, Y., Tian, J., Wu, C., Long, X., Zhang, Q., Zhang, W., Zhao, Z., and Cao, J.: High Contribution of Secondary Brown Carbon to Aerosol Light Absorption in the Southeastern Margin of Tibetan Plateau, *Geophys. Res. Lett.*, **46**, 4962–4970, <https://doi.org/10.1029/2019GL082731>, 2019.
- Wang, X., Pu, W., Ren, Y., Zhang, X., Zhang, X., Shi, J., Jin, H., Dai, M., and Chen, Q.: Observations and model simulations of snow albedo reduction in seasonal snow due to insoluble light-absorbing particles during 2014 Chinese survey, *Atmos. Chem. Phys.*, **17**, 2279–2296, <https://doi.org/10.5194/acp-17-2279-2017>, 2017.

- Wong, J. P. S., Tsagkaraki, M., Tsiotra, I., Mihalopoulos, N., Violaki, K., Kanakidou, M., Sciare, J., Nenes, A., and Weber, R. J.: Atmospheric evolution of molecular-weight-separated brown carbon from biomass burning, *Atmos. Chem. Phys.*, 19, 7319–7334, <https://doi.org/10.5194/acp-19-7319-2019>, 2019.
- Zhang, Q., Shen, Z., Lei, Y., Zhang, T., Zeng, Y., Ning, Z., Sun, J., Westerdahl, D., Xu, H., Wang, Q., Cao, J., and Zhang, R.: Optical properties and source identification of black carbon and brown carbon: comparison of winter and summer haze episodes in Xi'an, Northwest China, *Environ. Sci.-Proc. Imp.*, 21, 2058–2069, <https://doi.org/10.1039/C9EM00320G>, 2019.
- Zhang, S., Tison, E., Dusanter, S., Beaugard, C., Gengembre, C., Augustin, P., Fourmentin, M., Delbarre, H., and Riffault, V.: Near real-time PM₁ chemical composition measurements at a French urban background and coastal site under industrial influence over more than a year: Temporal variability and assessment of sulfur-containing emissions, *Atmos. Environ.*, 244, 117960, <https://doi.org/10.1016/j.atmosenv.2020.117960>, 2021.
- Zhang, S., Dusanter, S., Tison, E., Beaugard, C., Delbarre, H., and Riffault, V.: Source apportionment of organic aerosols and impact of ship emissions in the port of Dunkirk, northern France over more than one year, in preparation, 2024.
- Zhang, X., Mao, M., Yin, Y., and Tang, S.: The absorption Ångström exponent of black carbon with brown coatings: effects of aerosol microphysics and parameterization, *Atmos. Chem. Phys.*, 20, 9701–9711, <https://doi.org/10.5194/acp-20-9701-2020>, 2020.
- Zhang, Y., Favez, O., Petit, J.-E., Canonaco, F., Truong, F., Bonnaire, N., Crenn, V., Amodeo, T., Prévôt, A. S. H., Sciare, J., Gros, V., and Albinet, A.: Six-year source apportionment of submicron organic aerosols from near-continuous highly time-resolved measurements at SIRTa (Paris area, France), *Atmos. Chem. Phys.*, 19, 14755–14776, <https://doi.org/10.5194/acp-19-14755-2019>, 2019.
- Zhang, Y., Albinet, A., Petit, J.-E., Jacob, V., Chevrier, F., Gille, G., Pontet, S., Chrétien, E., Dominik-Sègue, M., Levigoureux, G., Močnik, G., Gros, V., Jaffrezo, J.-L., and Favez, O.: Substantial brown carbon emissions from wintertime residential wood burning over France, *Sci. Total Environ.*, 743, 140752, <https://doi.org/10.1016/j.scitotenv.2020.140752>, 2020.
- Zhu, C.-S., Qu, Y., Zhou, Y., Huang, H., Liu, H.-K., Yang, L., Wang, Q.-Y., Hansen, A. D. A., and Cao, J.-J.: High light absorption and radiative forcing contributions of primary brown carbon and black carbon to urban aerosol, *Gondwana Res.*, 90, 159–164, <https://doi.org/10.1016/j.gr.2020.10.016>, 2021.