



HAL
open science

Impact of a paediatric-adult care transition programme on the health status of patients with sickle cell disease: study protocol for a randomised controlled trial (the DREPADO trial)

Delphine Hoegy, Nathalie Bleyzac, Alexandra Gauthier-Vasserot, Giovanna Cannas, Angélique Denis, Arnaud Hot, Yves Bertrand, Pauline Occelli, Sandrine Touzet, Claude Dussart, et al.

► To cite this version:

Delphine Hoegy, Nathalie Bleyzac, Alexandra Gauthier-Vasserot, Giovanna Cannas, Angélique Denis, et al.. Impact of a paediatric-adult care transition programme on the health status of patients with sickle cell disease: study protocol for a randomised controlled trial (the DREPADO trial). *Trials*, 2020, 21 (1), pp.152. 10.1186/s13063-019-4009-9 . hal-04549138

HAL Id: hal-04549138

<https://hal.science/hal-04549138v1>

Submitted on 16 Jul 2024

HAL is a multi-disciplinary open access archive for the deposit and dissemination of scientific research documents, whether they are published or not. The documents may come from teaching and research institutions in France or abroad, or from public or private research centers.

L'archive ouverte pluridisciplinaire **HAL**, est destinée au dépôt et à la diffusion de documents scientifiques de niveau recherche, publiés ou non, émanant des établissements d'enseignement et de recherche français ou étrangers, des laboratoires publics ou privés.




Distributed under a Creative Commons Attribution 4.0 International License

STUDY PROTOCOL

Open Access



Impact of a paediatric-adult care transition programme on the health status of patients with sickle cell disease: study protocol for a randomised controlled trial (the DREPADO trial)

Delphine Hoegy^{1,2,3,4*} , Nathalie Bleyzac^{5,6}, Alexandra Gauthier-Vasserot^{4,7,8,9}, Giovanna Cannas^{4,8,9,10}, Angélique Denis¹¹, Arnaud Hot^{10,12}, Yves Bertrand^{4,7,12}, Pauline Occelli^{11,13}, Sandrine Touzet^{11,13}, Claude Dussart^{1,14}, Audrey Janoly-Dumenil^{1,2,3} and DREPADO study group

Abstract

Background: Thanks to advancements in medical care, a majority of patients with sickle cell disease (SCD) worldwide live beyond 18 years of age, and therefore, patients initially followed in paediatric departments are then transferred to adult departments. This paediatric-adult care transition is a period with an increased risk of discontinuity of care and subsequent morbidity and mortality. During this period, the patient will have to manage new interlocutors and places of care, and personal issues related to the period of adolescence. To take into consideration all these aspects, an interesting approach is to use the whole system approach to the patient, as presented in the biopsychosocial approach. The aim of this trial is to evaluate the impact of the proposed biopsychosocial paediatric-adult transition programme.

Methods: The DREPADO study is a multicentre randomised control trial comparing a control group (Arm A) to an interventional group with a paediatric-adult transition programme based on a biopsychosocial approach (Arm B). To be included, patients should have the SS, SC, or S β form of sickle cell disease and be aged between 16 and 17 years. The randomisation in a 1:1 ratio assigns to Arm A or B. The primary outcome is the number of hospital admissions and emergencies for complications in the index hospital, in the 2 years after the first consultation in the adult department of care. Secondary outcomes consider the quality of life, but also include coping skills such as sense of self-efficacy and disease knowledge. To provide patient and parent knowledge and coping skills, the transition programme is composed of three axes: educational, psychological, and social, conducted individually and in groups.

Discussion: By providing self-care knowledge and coping skills related to SCD and therapeutics, helping empower patients in relation to pain management and emotions, and facilitating the relationship to oneself, others, and care in Arm B of the DREPADO study, we believe that the morbidity and mortality of patients with SCD may be reduced after the proposed paediatric-adult transition programme.

Trial registration: ClinicalTrials.gov, ID: NCT03786549; registered on 17 December 2018; <https://clinicaltrials.gov/>.

Keywords: Sickle cell disease, Paediatric-adult care transition

* Correspondence: delphine.hoegy@chu-lyon.fr

¹EA 4129 P2S Parcours Santé Systémique-Université Claude Bernard Lyon 1, Université Lyon 1, Lyon, France

²Pharmacie Hôpital Edouard Herriot, Hospices Civils de Lyon, 5 place d'Arsonval, 69003 Lyon, France

Full list of author information is available at the end of the article



Contributions to the literature

- Sickle cell disease (SCD) is poorly represented in the literature on chronic diseases, in particular on the management of care.
- During the paediatric-adult transition, there is an increased risk of discontinuity of care and subsequent morbidity and mortality, so improvement is essential. Based on scientific evidence, the proposed paediatric-adult transition programme used a biopsychosocial approach to consider the patient and their family within the whole system.
- Using the methodology of randomised controlled trials, this protocol contributes to the construction of evidence on the paediatric-adult transition of patients with SCD.

Background

Sickle cell disease (SCD) is a chronic, genetic disease, widespread both around the world and in France. After diagnosis, patients with SCD require medical follow-ups, which are essential to prevent complications. The most frequent complications are vaso-occlusive crises (VOC; which are painful), acute chest syndrome (ACS), and stroke. Thanks to advancements in medical care, a majority of SCD patients worldwide live beyond 18 years of age [1], and therefore, patients initially followed in paediatric departments are then transferred to adult departments.

For patients with chronic disease such as SCD, this paediatric-adult care transition is a period with an increased risk of discontinuity of care [2, 3]. During this period, adherence to medication is sub-optimal [1, 4] and the rate of missed clinical appointments is high [5]. Furthermore, the highest morbidity and mortality is observed between 17 and 18 years of age [6], and young adults frequently use acute care (emergency care and hospitalisations) after paediatric-adult transition [7].

During the paediatric-adult transition, the patient will have to manage new interlocutors and places of care, as well as a different organisation of this. An important aspect to improve the health status of patients is, therefore, to involve both paediatric and adult departments of care in the transition [3]. In addition, the patient will have to manage personal issues related to the period of adolescence [8]: a period of psychological upheaval and adaptation of family roles [9]. To assess the needs of patients with SCD during this transition period, a qualitative study was conducted in Lyon (France). Parents, as well as adolescent and adult patients with SCD, were individually interviewed about it. Results revealed individual and also family needs that concerned knowledge of the disease, coping skills, therapeutics, and psychosocial aspects [10].

To take into consideration all these aspects, an interesting approach is to regard the patient with a whole system approach, as presented in the biopsychosocial or social-ecological model [11]. Based on this approach, the Social-Ecological Model of Adolescent and Young Adult Readiness to Transition (SMART) proposes a conceptual framework that describes factors influencing paediatric-adult transition in SCD [12]. This includes bioclinical factors such as complications, psychological factors such as pain perception, and social factors such as scholar absenteeism [12]. Some of these factors may be modified and therefore these could become part of the patient's coping skills [11, 12]. For instance, a coping skill for managing complications may be knowing when to go to the hospital based on a patient's own pain threshold. For this, a pluridisciplinary team is required [12].

Currently, only pilot studies of transition programmes based on biopsychosocial approaches have been performed [13–16], with encouraging primary results [13].

The DREPADO open-label, individual, multicentre, randomised controlled trial (RCT) proposes to assess a paediatric-adult transition program for patients with SCD based on a biopsychosocial approach and SMART compared to standard care management. As compared to available studies that have investigated the paediatric-adult care transition [13], the originality of this study is the biopsychosocial approach coupled to its randomised controlled design. The purpose of the article is to present the DREPADO study protocol.

Methods/Design

The aim, design, and setting of the study

The DREPADO RCT seeks to assess the impact of a paediatric-adult transition programme. This trial is an interventional study. It is an open-label, individual, multicentre RCT comparing a control group (Arm A) to an interventional group with a paediatric-adult transition SCD programme based on the biopsychosocial approach (Arm B).

The DREPADO trial is a French national RCT including centres specialised in SCD patient care, involved in the SCD health network (*Maladie Chronique du Globule Rouge et des autres maladies de l'érythropoïèse* Filière - MCGRE) accredited by the French Ministry of Health and motivated to participate in this study. The coordinating centre is Lyon University Hospital, and five other centres will participate (Créteil, APHP Kremlin-Bicêtre, Martinique, APHP Necker, Pontoise).

The follow-up period is a maximum of 4 years for each patient. Outcomes is assessed at baseline (T-inclusion), at transfer date – which corresponds to the first consultation in the adult department of care (T-transfer), 12 months after transfer (T-12), and 24 months after transfer (T-24).

Study subjects

The study focuses on adolescent patients with SCD and their caregivers. The patient-caregiver dyad is included. The inclusion period is expected to be 2 years.

Inclusion criteria

Patients are included if they fulfil the following conditions: having the SS, SC, or S β form of SCD; aged between 16 and 17 years; orally agreeing to participate. The caregiver is included if they fulfil the following conditions: parent or legal guardian of the patient; aged more than 18 years; having provided a signed written consent for him/herself and for the patient.

Non-inclusion criteria

Patients and caregivers with any of the following conditions are excluded: presence of any known and major cognitive or psychiatric disorder that could, according to the judgement of the investigator, hamper intervention or evaluation, and/or familial history of such disorder; patients considered healed after stem cell transplantation. No concomitant care, interventions, or enrolment to other trials are prohibited by participation in the DREPADO trial.

Withdrawal and discontinuation

Participants can withdraw voluntarily at any time during the trial. Participants who are not present at intervention and/or evaluation are contacted by telephone; after four unsuccessful calls, participants are considered dropouts.

Sample size and recruitment

A total of 196 (98 in each group) is required to detect at least a 15% reduction of the hospitalisation rate for complications 2 years after the transfer in the intervention group compared to the control group. This reduction assumes a hospitalisation rate of 3.5 per patient per year [7] with 80% power and the use of a two-sided test at a significance level of 5% and a 10% inflation factor to anticipate study deviations (missing data, withdrawal, loss to follow-up).

Participants are recruited in the hospital when they come for a medical consultation or at the end of a hospitalisation for complications. Potential participants are screened. The investigator informs the patient and caregiver about the study, following which the patient gives oral consent and the patient's caregiver the written informed consent for patient participation. The information note and consent form is presented in Additional file 1. When the patient legally becomes an adult (i.e. at 18 years of age in France), he will give his/her own written informed consent.

Randomisation and blinding

Participants are randomly assigned to one of the two groups at a 1:1 ratio using a minimisation algorithm. The minimisation factors are the centre, the type of SCD, and the occurrence of VOC during the year before inclusion. Allocation is done using a central randomisation system (Ennov Clinical, version 7.5.710.4, San Francisco, CA, USA). At each centre, a clinical research associate delegated by the investigator and who is trained in good clinical practice (GCP) logs into the central randomisation system and inputs patient information; a random number and group assignment are then immediately given by the system. Because DREPADO is an open-label trial, the clinical research associate directly informs the patient-caregiver dyad of the arm to which they are assigned (Arm A or B).

Study scheme

The Standard Protocol Items: Recommendation for Interventional Trials (SPIRIT) flow diagram is presented in Fig. 1 and the detailed study scheme in Fig. 2.

Arm A – control group

Patients and caregivers randomised to the control group receive the standard care management used in the study centre, including a joint consultation with a paediatrician and an internist/haematologist between the age of 16 and 18 years, and a visit to the adult department of care.

Arm B – intervention group

In addition to standard management, patients and caregivers randomised to the intervention group benefit from the SCD paediatric-adult transition programme. Based on the biopsychosocial approach, this consists of three structured axes, the objectives of which and practical details are summarised in Table 1.

The modifiable factors are used as coping skills during the educative, the psychological, and the social axis. The objective of the educative axis is to provide knowledge and coping skills related to self-care management. It is conducted at home with the patient and his/her parent by a healthcare professional trained in patient education. The objective of the psychological axis is to help empower patients in relation to pain management and emotions. It is conducted at hospital with only the patient by a healthcare professional trained in therapeutic hypnosis. The objective of the social axis is to facilitate the relationship to oneself, others, and care. It is conducted in a 'neutral place' (not at home and not at the hospital) with a group of patients by a healthcare professional trained in patient education and an expert adult patient also trained in patient education.

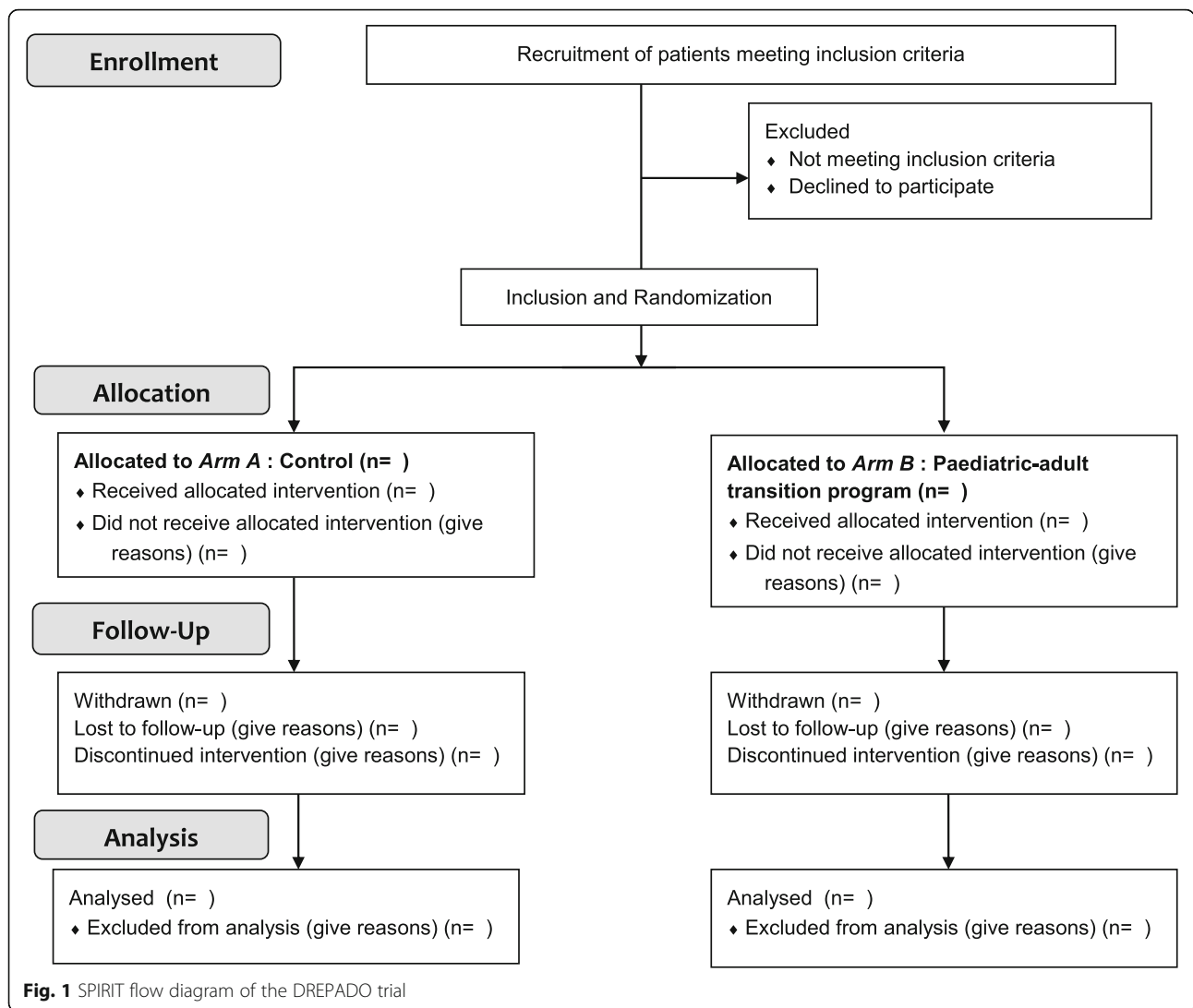


Fig. 1 SPIRIT flow diagram of the DREPADO trial

Outcome measurements

The primary outcome is number of hospital admissions and emergencies in the index hospital for complications (i.e. VOC, ACS, and/or stroke) in the 2 years after T-transfer.

To evaluate the biopsychosocial approach, the secondary outcomes include bioclinical, psychological, and social factors, measured at T-inclusion, T-transfer, T-12, and/or T-24, collected from patients and/or parents. With regard to the indirect bioclinical factors, the use of care is evaluated by the incidence of emergency visits and medical consultations at T-24. Medication adherence is also measured at T-inclusion, T-transfer date, T-12, and T-24 by adapted Medication Intake Survey-Asthma (MIS-A) [17] adapted for SCD and Medication Adherence Report Scale (MARS) [18]. Psychological factors, such as pain perception, and social factors, such as school absenteeism is measured by self-declaration. Quality of life is evaluated using the brief World Health

Organisation Quality of Life questionnaire (WHOQOL-Brief), and skills are measured by questionnaires, such as the health literacy using the European Health Literacy Questionnaire (HLS-EU-Q16) [19], self-efficacy feeling using the Self Efficacy Specific Instrument – Sickle Cell Disease (SCD-SES) [20]; these are measured at the T-inclusion, T-transfer, T-12, and T-24. All the data sources are presented in Table 2.

At the end of the study, the lived experience of a sample of patients, parents, and contributors is evaluated. The cost-effectiveness and the implementation of the transition programme are also secondary outcomes.

Data collection and management

The data collection plan is presented in Table 2

The study data will be collected on a secure electronic case report form (eCRF) (Ennov Clinical, version 7.5.710.4, San Francisco, CA, USA), that will be available at each centre through an Internet portal. In each centre,

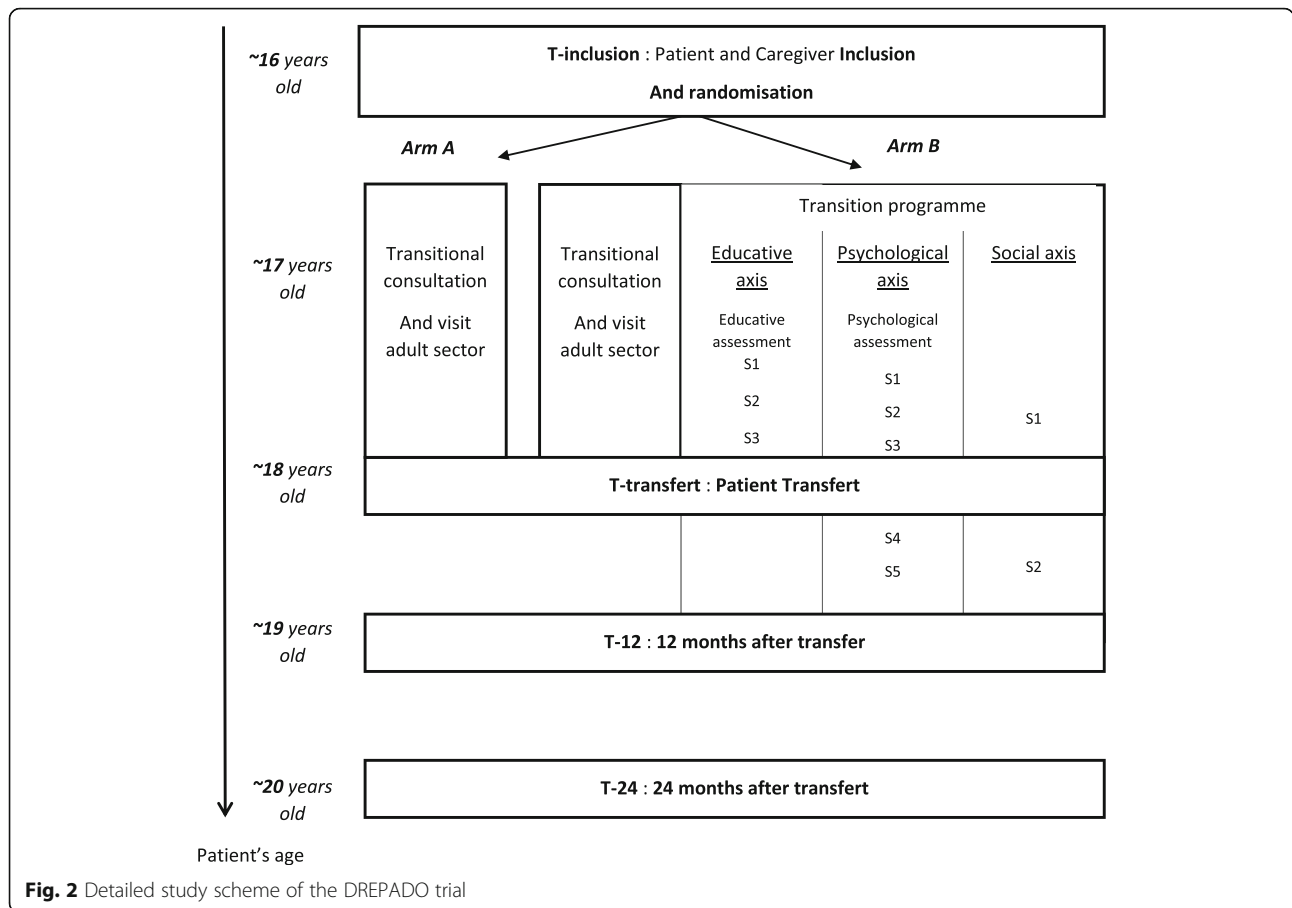


Fig. 2 Detailed study scheme of the DREPADO trial

eCRF users have their own personal login. A clinical research associate, delegated by the centre investigator and who is trained in GCP, enters data into the eCRF.

No personal identifying information will be mentioned on the eCRF. Each patient included the study will be assigned a unique identification number that will consist of the identification number of the investigational centre, the initials of the patient, and the chronological inclusion number of the patient.

Multiple external validation checks will be applied: examination of the source documents and cross-checking with the data recorded in the eCRF as to its accuracy, the presence of missing data, and the consistency of data. The eCRF will only include the data necessary for the analysis to be reported in a scientific publication.

All study data will be stored securely at Lyon University Hospital. All electronic data will be secured on a password-protected laptop. Paper-based study documents

Table 1 The three axes of paediatric-adult transition programme

Axes	Public	Objectives	Contents	Practical details	Providers
Educative	Patient and caregiver dyad	Providing self-care knowledge and skills related to SCD and therapeutics	Knowledge and coping skills, with patient needs assessment	Face to face At patients' home 3 sessions of 2 h	One healthcare professional, trained in patient education and in SCD
Psychological	Individual patient i	Helping empower patients in relation to pain management and emotions	Knowledge and coping skills, with patient needs assessment	Face to face At hospital 6 sessions of 1.5 h	One healthcare professional, trained in therapeutic hypnosis and in SCD
Social	Group of 4 to 8 patients	Facilitating the relationship with oneself, others, and care	Coping skills	Face to face At 'neutral place' as association patient place 2 sessions of 2 h	One healthcare professional and one expert patient, both trained in patient education and in SCD

h hour, *SCD* sickle cell disease

Table 2 Data collection plan

Outcomes		Time point				Population		Data sources
		T-inclusion	T-transfer	T-12	T-24	Patient	Parent	
Use of care	Hospitalisations for VOC, ACS, stroke		X		X	X		Medical records
	Emergency visits, medical consultations, imaging exams		X		X	X		Medical records
Medication adherence		X	X	X	X	X		2 questionnaires (MARS and adapted-MIS-A)
School absenteeism			X		X		X	Auto declaration
Quality of life		X	X		X	X		26-item questionnaire (WHOQOL-Brief)
Health literacy		X	X		X	X		16-item questionnaire (HLS-EU-Q16)
Disease and therapeutic knowledge		X	X		X	X	X	36-item questionnaire
Patient activation		X	X		X	X		13-item questionnaire
Sense of self-efficacy						X		9-item questionnaire (SCD-SES)
Transition preparation		X	X		X	X		20-item questionnaire (TRAQ)
Pain perceptions	At home			X	X	X		Auto declaration (book)
	Intensity during hospitalisations		X		X	X		Medical records

ACS acute chest syndrome, *HLS-EU-Q16* European Health Literacy Questionnaire, *MARS* Medication Adherence Report Scale, *adapted-MIS-A* Medication Intake Survey-Asthma, *SCD-SES* Self-Efficacy Specific instrument – Sickle Cell Disease, *TRAQ* Transition Readiness Assessment Questionnaire, *VOC* vaso-occlusive crisis, *WHOQOL-Brief* World Health Organization Quality of Life brief questionnaire

will be stored in a secure filing cabinet at each centre. All electronic documents containing names or personal identifying information, necessary for the follow-up of the study, will be stored separately from other study data and protected by a code number. Access to these files will be limited to research staff involved in the study.

The trial statisticians will have access to the data set for the final analysis of trial outcomes. They will receive checked and validated data from the eCRF with no personal identifying information.

Monitoring and participant safety

The Trial Steering Committee (TSC) will be responsible for overseeing the progress of the trial and will meet at regular intervals. The TSC includes the principal investigator, the investigators of the centres, and the trial coordinators/project managers. The TSC has developed the study protocol and is responsible for data collection, management, publications, and the final data set. The committee is responsible for finding solutions to unforeseen questions/problems that may arise in the course of the study.

One monitoring session will be conducted per year in each centre by the clinical research department of the Lyon University Hospital. To ensure conformity to GCP, the medical records, informed consent forms, and the eCRFs will be checked.

No interim analysis or harms are expected, and therefore no premature stop of the trial is anticipated and no auditing by an independent committee is needed.

According to French law, the study does not require a formal data monitoring committee as it is a trial with known minimal risks.

Statistical analysis plan

Demographics and other characteristics are reported descriptively and according to treatment group. Means and standard deviation (SD), or medians and ranges when appropriate are calculated for continuous variables. Categorical variables will be presented using numbers and percentages.

The crude rate of hospitalisations due to complications will be calculated by dividing the total number of hospitalisations due to VOC, ACS, and stroke occurring after transfer by the total duration of follow-up of all patients in each group. The treatment effect will be assessed using a multivariable Poisson regression model with the study group as a factor, adjusting for minimisation factors and relevant patient characteristics and the length of follow-up as the offset. Results will be expressed as a rate ratio with 95% confidence interval. A negative binomial model will be fitted if data are over-dispersed. The same analyses will be performed for the association between intervention and other secondary outcomes.

Analysis of covariance (ANCOVA) will be used to evaluate the intervention effect at T-24 on all the secondary outcomes evaluated by questionnaires. Scores will be computed and depicted at each assessment by following the scoring procedures for each questionnaire. Each ANCOVA will include the baseline measure (T-inclusion)

and minimisation factors as covariates. Changes over time for each score will be also assessed using generalized estimation equation analyses to test the effect of group, time, and the interaction group time after controlling for minimisation factors and relevant patient characteristics.

Dissemination and data sharing statement

Important protocol modifications will be communicated to the relevant parties by sending the updated protocol to investigators.

There are no current plans for granting public access to the full protocol, participant-level data set or statistical code. However, if researchers wish to access the data set (e.g. to conduct a secondary analysis or meta-analysis) the project management committee will facilitate this.

The principal investigator will have access to the data and will take full responsibility for the analysis and publication of the results. Once the main analyses have been undertaken, data will be available upon reasonable request.

Results will be communicated through scientific publications, and one press release made in conjunction with a patient association (SOSglobi). Following this, an oral presentation will be given to the SCD health network (*Filière - MCGRE*) accredited by the French Ministry of Health.

Discussion

Owing to the risk of discontinuity of care in chronic disease patients, it is essential to improve the paediatric-adult care transition. The DREPADO project is the first RCT designed to assess the impact of a paediatric-adult transition programme. The latter is based on the available literature [3] and on a recent previous qualitative study [10]. In accordance with this, it involves both paediatric and adult departments of care by starting the intervention in a paediatric department and continuing it in adult department of care. In addition, the qualitative study found that the needs of parents and patients were biopsychosocial, both individual and familial [10]. Added to that, the modifiable factors of the SMART [11, 12] were included in the three axes of the programme, to become patients' coping skills. Furthermore, because the previous qualitative study [10] found the need for an integrated caregiver programme, the educative axis involves both the patient and their parent. This axis is conducted at home as this is patient's environment as opposed to the hospital, which is the environment of care [21].

The primary outcome is bioclinical, which is more objective than complications measured in terms of pain. Secondary outcomes consider aspects related to the patient using a whole system approach, such as quality of life, but also include coping skills such as sense of self-efficacy, health literacy, and disease knowledge. In addition, as the transition of care is stressful and

generally experienced by both patients and their parents, lived experiences of the proposed care transition programme are also evaluated.

The major strength of the DREPADO trial is the proposed intervention using a biopsychosocial, whole system approach to the patient, which aims to reflect as much as possible the real needs of patients and their family. In addition, needs are assessed at the beginning of the psychological and educative axes, in order to individualise the intervention. Another strength of the intervention is the participation of expert patients in the social axis; his/her experiential knowledge promotes sharing between the adolescents in the group and provides real-life examples of coping skills and advice [22]. The major limitation of DREPADO trial is the difficulty to implement the transition programme, as the intervention is complex [23]; it involves different departments of care, different places of intervention (home, hospital, 'neutral place'), and different types of expertise (or the training of personnel in several different fields). This complexity requires good communication and coordination between interlocutors; to aid in this regard, the DREPADO study group provides each centre tools for communication and training. Another potential limitation is patient adherence to the programme, and the strategies to improve this are also based on communication, using, for example, paper schedules and reminder text messages.

The DREPADO RCT has multiple perspectives. First of all, for patients and their parents, this trial should show a better health status, quality of life, and a better experience of this difficult period of care. For healthcare professionals, it is expected to provide a model of paediatric-adult care transition for SCD. Furthermore, the methodological quality renders possible the evaluation of the efficacy and efficiency of the proposed programme. If conclusive, it will be possible to adapt it and test it in other chronic diseases presenting the same care transition problem [2]. For public health, the DREPADO trial results will be multiple. By focusing on this population of sub-Saharan origin with low visibility and high social vulnerability [24], this study will reduce the social inequalities in the healthcare system experienced by patients with SCD and their families. Also, by improving the health status, quality of life, and care of patients with SCD, the indirect cost of complications will decrease.

The DREPADO study is the first RCT designed to assess the impact of a paediatric-adult transition programme based on a biopsychosocial approach. By providing self-care knowledge and coping skills related to SCD and therapeutics, helping empower patients in relation to pain management and emotions, and facilitating the relationship to oneself, others, and care, we believe that the morbidity of patients with SCD may be reduced after the proposed transition programme.

Supplementary information

Supplementary information accompanies this paper at <https://doi.org/10.1186/s13063-019-4009-9>.

Additional file 1.

Additional file 2. SPIRIT 2013 Checklist: Recommended items to address in a clinical trial protocol and related documents*.

Abbreviations

ACS: Acute chest syndrome; eCRF: Electronic case report form; GCP: Good clinical practice; PREPS: Projet de Recherche sur la Performance du Système de Soins; RCT: Randomised controlled trial; SCD: Sickle cell disease; SMART: Social-Ecological Model of Adolescent and Young Adult Readiness to Transition; SPIRIT: Standard Protocol Items: Recommendation for Interventional Trials; T-12: 12 months after transfer; T-24: 24 months after transfer; T-inclusion: Baseline; T-transfer: Transfer date – which corresponds to the first consultation in the adult department of care; TSC: Trial Steering Committee; VOC: Vaso-occlusive crisis; WHOQOL: World Health Organisation Quality of Life Brief Questionnaire

Acknowledgements

The DREPADO study group collaborators:

- C. Pivot, chief of pharmacy Hospices Civils de Lyon.
- C. Pondarre, paediatrician at the Centre Hospitalier Inter Communal de Creteil.
- F. Galactéros, internist at the AP-HP Henri Mondor and medical coordinator of the *Maladie Chronique du Globule Rouge et des autres maladies de l'érythro-poïèse (Filière -MCGRE)*.
- E. Fois, internist at the AP-HP Henri Mondor.
- M. De Montalembert, paediatrician at the AP-HP Necker and president of the ROFSED.
- J.B. Arlet, internist at the AP-HP HGPE.
- G. Elana, paediatrician at the University Hospital of Martinique.
- K. Michaux, paediatrician at the University Hospital of Martinique.
- C. Guitton, paediatrician at the AP-HP Kremlin-Bicêtre.
- C. Chantalat, internist at the AP-HP Kremlin-Bicêtre.
- S. Eyssette-Guerreau, paediatrician at the Hospital of Pontoise.
- L. Blum, internist at the Hospital of Pontoise.

Standard of reporting

The Standard Protocol Items: Recommendations for Interventional Trials (SPIRIT) checklist 2013 have been followed. It is provided in Additional file 2.

Trial status

The RCT DREPADO is currently recruiting. The first enrolment was realised on 16 January 2019, and this article was submitted on 24 September 2019. To date, eight participants have been recruited. The recruitment will be completed at the approximate date of 1 April 2022. ClinicalTrials.gov, ID: NCT03786549. This is the first version of the protocol, approved by a French ethics committee on 26 September 2018. When the last patient undergoes his final evaluation (T-24), the trial will be completed.

Authors' contributions

DH wrote the protocol, submitted the protocol to the national tender, enrolled the hospital centres and participated in their coordination. PO and ST wrote the methodology of the protocol and planned the study. AD performed the statistical analysis. ST supervised the health economics study. AJD, NB, GC, and AGV co-wrote and corrected the protocol, assessing the potential clinical impact of each error detected. CD, YB, and AH co-wrote the protocol. All authors read and approved the final manuscript. The DREPADO study group (contactable at etude.drepado@chu-lyon.fr) is composed of those authors and Stéphanie Poupon-Bourdy who participated in its coordination; Fanny Nusbaum, Karim Khadem and Ronald Guilloux who corrected the protocol; and Daniela Cuzzubbo who assessed the potential clinical impact of each error detected.

Authors' information

DH is the project manager, participating pharmacist, a member of the P2S research unit, and a member of the study group. AGV is the paediatric co-investigator in the Lyon centre, and a member of the study group. GC is an adult co-investigator in the Lyon centre and a member of the study group. AD is a biostatistician and member of the study group. AH is an adult co-investigator in the Lyon centre and a member of the study group, and chief of the Lyon MCGRE centre. YB is the principal investigator, director of the haematology paediatric department in Lyon and a member of the study group. ST holds scientific responsibility and is a member of the study group. NB and PO are members of the study group. CD is director of the P2S research unit and a member of the study group. AJD is the co-project manager, a member of the P2S research unit and a member of the study group.

Funding

This work was supported by the French Ministry of Health, grant number 69HCL18_0039 as PREPS (*Projet de Recherche sur la Performance du Système de Soins*) 2017. The funders had no role in the design of the study, collection, analysis, interpretation data and in writing this manuscript.

Availability of data and materials

The data sets used and/or analysed during the current study available from the corresponding author on reasonable request.

Ethics approval and consent to participate

This study will be conducted in accordance with the Declaration of Helsinki. According to French law, the study protocol has been reviewed and the French ethics committee (south west and overseas III Protection to Person Committee) approved the study for all centres on 26 September 2018. This RCT has been registered at clinicaltrials.gov (number NCT03786549 on 17 December 2018).

Any substantial change is subject to a written amendment submitted to the promoter, who must obtain a favourable opinion from the Protection to Person Committee before implementation. All amendments to the protocol must be made known to all investigators involved in the research. According to French law, all patients and caregivers will be verbally informed about the study and will receive an information form. For inclusion, the patient (i.e. under 18 years of age in France) will give oral consent and the patient's caregiver the written informed consent for patient participation. When the patient legally becomes an adult (i.e. at 18 years of age in France), he will give his/her own written informed consent.

Consent for publication

Not applicable.

Competing interests

The authors declare that they have no competing interests.

The DREPADO study group

contactable to etude.drepado@chu-lyon.fr is composed of: Delphine Hoegy, Audrey Janoly-Dumenil, Nathalie Bleyzac, Alexandra Gauthier-Vasserot, Giovanna Cannas, Arnaud Hot, Yves Bertrand, Pauline Occelli, Sandrine Touzet, Angélique Denis, Claude Dussart, Stéphanie Poupon-Bourdy, Fanny Nusbaum, Daniela Cuzzubbo, Karim Khadem, Ronald Guilloux.

Author details

- ¹EA 4129 P2S Parcours Santé Systémique-Université Claude Bernard Lyon 1, Université Lyon 1, Lyon, France.
- ²Pharmacie Hôpital Edouard Herriot, Hospices Civils de Lyon, 5 place d'Arsonval, 69003 Lyon, France.
- ³Institut des Sciences Pharmaceutiques et Biologiques, Université Claude Bernard Lyon 1, Université Lyon 1, Lyon, France.
- ⁴INSERM U1111-CNRS UMR 5308 ENS Lyon, Université Lyon 1, Lyon, France.
- ⁵EMR 3738, PK/PD modeling in oncology, Université Claude Bernard Lyon 1, Université Lyon 1, Lyon, France.
- ⁶Centre Antipoison, Hospices Civils de Lyon, Lyon, France.
- ⁷Institut d'Hématologie et d'Oncologie Pédiatrique de Lyon, Hospices Civils de Lyon, Lyon, France.
- ⁸Laboratoire Interuniversitaire de Biologie de la Motricité (LIBM) EA7424, Université Claude Bernard Lyon 1, Université Lyon 1, Lyon, France.
- ⁹Laboratoire d'Excellence du Globule Rouge (Labex GR-Ex), PRES Sorbonne, Paris, France.
- ¹⁰Médecine Interne, Hôpital Edouard Herriot, Hospices Civils de Lyon, Lyon, France.
- ¹¹Pôle Santé Publique, Hospices Civils de Lyon, Lyon, France.
- ¹²Centre de Référence Constitutif Syndromes Drépanocytaires

Majeurs, Thalassémies et Autres Pathologies Rares du Globule Rouge et de l'Erythropoïèse, Hospices Civils de Lyon, Lyon, France. ¹³EA 7425 HESPER Health Services and Performance Research, Université Lyon 1, Lyon, France. ¹⁴Pharmacie Centrale, Hospices Civils de Lyon, Lyon, France.

Received: 16 October 2019 Accepted: 18 December 2019

Published online: 10 February 2020

References

- de Montalembert M, Guitton C. French Reference Centre for Sickle Cell Disease. Transition from paediatric to adult care for patients with sickle cell disease. *Br J Haematol*. 2014;164:630–5. <https://doi.org/10.1111/bjh.12700>.
- Berens JC, Jan S, Szalda D, Hanna CM. Young adults with chronic illness: how can we improve transitions to adult care? *Pediatrics*. 2017;139. <https://doi.org/10.1542/peds.2017-0410>.
- Treadwell M, Telfair J, Gibson RW, Johnson S, Osunkwo I. Transition from pediatric to adult care in sickle cell disease: establishing evidence-based practice and directions for research. *Am J Hematol*. 2011;86:116–20. <https://doi.org/10.1002/ajh.21880>.
- Sabaté E. Adherence to long-term therapies: evidence for action: World Health Organization; 2003. <http://whqlibdoc.who.int/publications/2003/9241545992.pdf>. Accessed 20 June 2018
- Crosby LE, Modi AC, Lemaneck KL, Guilfoyle SM, Kalinyak KA, Mitchell MJ. Perceived barriers to clinic appointments for adolescents with sickle cell disease. *J Pediatr Hematol Oncol*. 2009;31:571–6. <https://doi.org/10.1097/MPH.0b013e3181acd889>.
- Quinn CT, Rogers ZR, McCavit TL, Buchanan GR. Improved survival of children and adolescents with sickle cell disease. *Blood*. 2010;115:3447–52. <https://doi.org/10.1182/blood-2009-07-233700>.
- Brousseau DC, Owens PL, Mosso AL, Panepinto JA, Steiner CA. Acute care utilization and rehospitalizations for sickle cell disease. *JAMA*. 2010;303:1288–94. <https://doi.org/10.1001/jama.2010.378>.
- Morsa M, Lombrail P, Boudailliez B, Godot C, Jeantils V, Gagnayre R. A qualitative study on the educational needs of young people with chronic conditions transitioning from pediatric to adult care. *Patient Prefer Adherence*. 2018;12:2649–60. <https://doi.org/10.2147/PPA.S184991>.
- Kinney TR, Ware RE. The adolescent with sickle cell anemia. *Hematol Oncol Clin North Am*. 1996;10:1255–64.
- Hoegy D, Guilloux R, Bleyzac N, Gauthier-Vasserot A, Cannas G, Bertrand Y, Hot A, Dussart C, Janoly-Dumenil A. Sickle cell disease perceptions of caregivers, adolescent and adult patients: barriers and facilitators to medical care adherence. *J Pain Symptom Manag*. submitted.
- Crosby LE, Quinn CT, Kalinyak KA. A biopsychosocial model for the management of patients with sickle-cell disease transitioning to adult medical care. *Adv Ther*. 2015;32:293–305. <https://doi.org/10.1007/s12325-015-0197-1>.
- Mulchan SS, Valenzuela JM, Crosby LE, Diaz Pow Sang C. Applicability of the SMART model of transition readiness for sickle-cell disease. *J Pediatr Psychol*. 2016;41:543–54. <https://doi.org/10.1093/jpepsy/jsv120>.
- Campbell F, Biggs K, Aldiss SK, et al. Transition of care for adolescents from paediatric services to adult health services. *Cochrane Database Syst Rev*. 2016;4:CD009794. <https://doi.org/10.1002/14651858.CD009794.pub2>.
- Crosby LE, Joffe NE, Peugh J, Ware RE, Britto MT. Pilot of the chronic disease self-management program for adolescents and young adults with sickle cell disease. *J Adolesc Health*. 2017;60:120–3. <https://doi.org/10.1016/j.jadohealth.2016.08.022>.
- Kaslow N, Collins HM, Rashid FL, Eckman JE. The efficacy of a pilot family psychoeducational intervention for pediatric sickle cell disease (SCD). *Fam Syst Health*. 2000;18:381–404.
- Smith GM, Lewis VR, Whitworth E, Gold DT, Thornburg CD. Growing up with sickle cell disease: a pilot study of a transition program for adolescents with sickle cell disease. *J Pediatr Hematol Oncol*. 2011;33:379–82. <https://doi.org/10.1097/MPH.0b013e318211bb2e>.
- Dima Alexandra L, Van Ganse E, Laforest L, Texier N, de Bruin M, ASTRO-LAB Group. Measuring medication adherence in asthma: development of a novel self-report tool. *Psychol Health*. 2017;32(10):1288–307.
- Misdráhi D, Verdoux H, Llorca PM, Baylé FJ. Therapeutic adherence and schizophrenia: the interest of the validation of the French translation of Medication Adherence Rating Scale (MARS). *Encephale*. 2004;30:409–10.
- Rouquette A, Nadot T, Labitrie P, Van den Broucke S, Mancini J, Rigal L, Ringa V. Validity and measurement invariance across sex, age, and education level of the French short versions of the European Health Literacy Survey Questionnaire. *PLoS One*. 2018;13(12):e0208091. <https://doi.org/10.1371/journal.pone.0208091>.
- Edwards R, Telfair J, Cecil H, Lenoci J. Reliability and validity of a self-efficacy instrument specific to sickle cell disease. *Behav Res Ther*. 2000;38:951–63.
- Fugier P., [L'intervention socio-éducative au domicile. Un espace de rencontre des désirs d'intimité et d'extimité des sujets]. *VST* 2014 ; 1 : 101–108.
- Charoud M. [L'engagement des associations de patients atteints de maladies chroniques: Du « savoir patient » aux stratégies de communication]. *Polit Commun* 2017 ; 9, 37–62.
- Morrison KM, Ball GDC, Ho J, Mackie P, Buchholz A, Chanoine J-P, et al. The CANadian Pediatric Weight management Registry (CANPWR): lessons learned from developing and initiating a national, multicentre study embedded in pediatric clinical practice. *BMC Pediatr*. 2018;18:237. <https://doi.org/10.1186/s12887-018-1208-6>.
- Lainé A, 2009. [Construction d'un stigmat sanitaire: la drépanocytose entre situations locales et globales.] hal-00436022. <https://hal.archives-ouvertes.fr/hal-00436022/document>. Accessed 20 June 2018.

Publisher's Note

Springer Nature remains neutral with regard to jurisdictional claims in published maps and institutional affiliations.

Ready to submit your research? Choose BMC and benefit from:

- fast, convenient online submission
- thorough peer review by experienced researchers in your field
- rapid publication on acceptance
- support for research data, including large and complex data types
- gold Open Access which fosters wider collaboration and increased citations
- maximum visibility for your research: over 100M website views per year

At BMC, research is always in progress.

Learn more biomedcentral.com/submissions

